

# The Chrysomelidae (Insecta: Coleoptera) collected by Dr. Akio OTAKE, on the occasion of his entomological survey in Sri Lanka from 1973 to 1975

Shinsaku KIMOTO

7-97, Mikunigaoka, Ogori City, Fukuoka, 838-0103, Japan

**ABSTRACT** — In total, 123 species of Chrysomelidae were collected by Dr. Akio OTAKE, on the occasion of his entomological survey in Sri Lanka from 1973 to 1975. Of which 9 species viz. *Basilepta kandyensis*, *Sastroides rugicollis*, *Hyphaenia otakei*, *Hoplosaenidea strigiceps*, *Luperomorpha singhala*, *Ceylonaltica nigripes*, *Orthaltica nuwaraeliyana*, *Lankanaltica fulva* and *Hyphasis lankana*, are described as new species. One genus, *Lankanaltica* is described as new genus. In total, 14 species are recorded for the first time from Sri Lanka.

## PREFACE

A good number of Chrysmelid beetles were collected by Dr. Akio OTAKE, on the occasion of his entomological survey in Sri Lanka from 1973 to 1975. This paper is a result of my study on the material. The material including the type specimens are preserved in the Entomological Laboratory, Faculty of Agriculture, Ehime University, Matsuyama, Ehime Prefecture. Some duplicate specimens will be deposited in the Kitakyushu Museum of Natural History and Human History, who made possible to publish this paper.

Some of the locality names listed in the paragraph of distribution do not mean the names of nation but indicate merely the name of area. Such as "India" is assigned "The Indian Subcontinent".

### Subfamily Zeugophorinae

*Zeugophora murrayi* (CLARK, 1866) Fig. 2a

App. Cat. Phytoph.: 87 (Ceylon) (*Pedrillia*).

Material examined: Udawattekela Sanctuary, Kandy, 8 exs., 23. i. 1974, 2 exs., 4. i. 1974, 1 ex., 21. ii. 1974; Hills South of the Lake Kandy, 1 ex., 19. iii. 1974.

Distribution: Sri Lanka.

### Subfamily Criocerinae

*Lema chalybenotata* CLARK, 1866

App. Cat. Phytoph.: 37 (Ceylon).

Material examined: Kalomura, Kandy Distr., 1 ex.,

19. ii. 1974,

Distribution: Sri Lanka.

*Lema coromandeliana* (FABRICIUS, 1798)

Ent. Syst. Suppl.: 154 (Tranquebar) (*Leptura*).

Material examined: Kalomura, Kandy Distr., 1 ex., 27. ii. 1975.

Distribution: Nepal, India, Sri Lanka, Thailand, Laos, Cambodia, Vietnam, China, Taiwan, Philippines, Sumatra, Borneo, Java, Makassar.

*Lema greeni* JACOBY, 1908 Fig. 2b

Fauna India, Col., 2: 31 (Ceylon).

Material examined: Udawattekela Sanctuary, Kandy, 2 exs., 4. i. 1974, 4 exs., 17. v. 1975, 1 ex., 23. i. 1974.

Distribution: Sri Lanka.

*Lema nitidissima* JACOBY, 1908 Fig. 2c

Fauna India, Col., 2: 67 (Travancore).

Material examined: Udawattekela Sanctuary, Kandy, 1 ex., 1. iv. 1975.

Distribution: Sri Lanka, India.

This species is here recorded for the first time from Sri Lanka.

*Lema terminata* LACORDAIRE, 1845

Mon. Phyt., 1: 341 (Coromandel).

Material examined: Katunayaka, Colombo Distr., 1 ex., 13. iii. 1974.

Distribution: Nepal, India, Sri Lanka.

This species is here recorded for the first time from Sri Lanka.

### Subfamily Cryptocephalinae

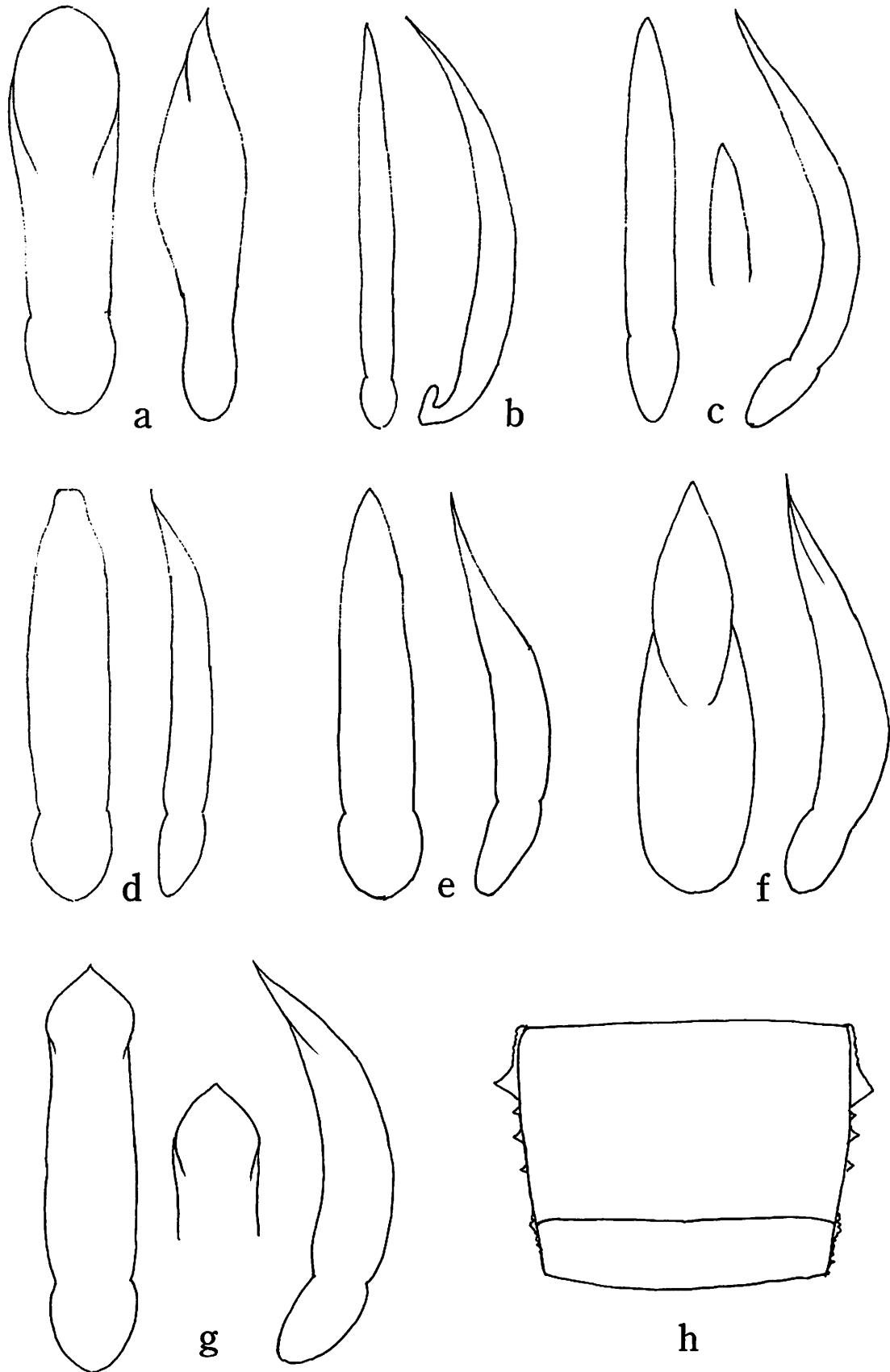


Fig. 1. a-g, Male genitalia. h, Prothorax. a, *Hoplosaenidea strigiceps* sp. nov.; b, *Sastroides rugicollis* sp. nov.; c, *Hyphaenia otakei* sp. nov.; d, *Luperomorpha singhala* sp. nov.; e, *Ceylonaltica nigripes* sp. nov.; f, *Hyphasis lankana* sp. nov.; g, *Lankanaltica fulva* sp. nov.; h, *Orthaltica nuwaraeliyana* sp. nov.

*Adiscus porculus* (SUFFRIAN, 1860) Fig. 2d

Linn. Ent., 14: 5 (Ceylon).

Material examined: Udawattekela Sanctuary, Kandy, 1 ex., 6. ix. 1973, 1 ex., 25. vii. 1973.

Distribution: Sri Lanka.

*Adiscus robustus* (JACOBY, 1904)Ann. Soc. Ent. Belg., 48: 383 (Nilgiris) (*Atrophidius*).

Material examined: Sigiriya, Matale Distr., 1 ex., 20. iv. 1975.

Distribution: India, Sri Lanka.

This species is here recorded for the first time from Sri Lanka.

*Coenobius insularis* WEISE, 1903

Dtsche Ent. Z., 1903: 34 (Ceylon).

Material examined: Kandy, 1 ex., iv. 1974.

Distribution: Sri Lanka.

*Coenobius lateralis* WEISE, 1903

Dtsche Ent. Zeit., 1903: 34 (Bengal, Ceylon).

Material examined: Udawattekela Sanctuary, Kandy, 5 exs., 19. ix. 1973, 1 ex., 6. ix. 1973, 1 ex., 21. ii. 1974, 1 ex., 25. vii. 1973; Peradeniya, Kandy Distr., 1 ex., 10. iii. 1974.

Distribution: Sri Lanka, India.

*Coenobius variegatus* JACOBY, 1908

Fauna India, Col., 2: 190 (Nilgiris).

Material examined: Mt. Pidurutalagala, Nuwaraeliya, 1 ex., 13. i. 1974.

Distribution: Sri Lanka, India.

This species is here recorded for the first time from Sri Lanka.

## Subfamily Chlamisinae

*Chlamisus ceylonensis* (JACOBY, 1887)Proc. Zool. Soc. London, 1887: 69 (Ceylon) (*Exema*).

Material examined: Hills South of the Lake Kandy, 1 ex., 18. v. 1975, 1 ex., 2. v. 1975.

Distribution: Sri Lanka.

## Subfamily Eumolpinae

*Dermorhytis ornatissima* BALY, 1864 Fig. 2e

Descr. Gen. &amp; Spec. Phytoph.: 8 (Ceylon).

Material examined: Udawattekela Sanctuary, Kandy, 2 exs., 1. v. iv. 1975, 2 exs., 30. iv. 1975, 1 ex., 2. vi. 1973; Hills South of the Lake Kandy, 1 ex., 18. ii. 1974, 1 ex., 6. iii. 1975.

Distribution: Sri Lanka.

*Dermorhytis handyensis* JACOBY, 1908 Fig. 2f

Fauna India, Col., 2: 369 (Ceylon).

Material examined: Udawattekela Sanctuary, Kandy, 1 ex., 26. v. 1973; Hills South of the Lake Kandy, 1 ex., 18.

v. 1975, 1 ex., 4. iv. 1975..

Distribution: Sri Lanka.

*Dermorhytis ceylonensis* JACOBY, 1887

Proc. Zool. Soc. London, 1887: 81 (Ceylon).

Material examined: Hills South of the Lake Kandy, 1 ex., 4. iv. 1975, 1 ex., 6. iii. 1975; Horton Plains, Nuwaraeliya, 1 ex., 13. i. 1974, 3 exs., 14. i. 1974; Mt. Pidurutalagala, Nuwaraeliya, 2 exs., 13. i. 1974.

Distribution: Sri Lanka.

*Dermorhytis variabilis* JACOBY, 1887 Fig. 2g

Proc. Zool. Soc. London, 1887: 82 (Ceylon).

Material examined: Udawattekela Sanctuary, Kandy, 1 ex., 21. ii. 1974, 1 ex., 3. iii. 1975, 1 ex., 1. iv. 1975, 3 exs., 30. iv. 1975, 10 exs., 1. iv. 1975; Hills South of the Lake Kandy, 11 exs., 18. v. 1975, 3 exs., 2. v. 1975, 1 ex., 4. iv. 1975.

Distribution: Sri Lanka.

*Platycorynus dohrni* (BALY, 1864)Descr. New Gen. & Spec. Phytoph.: 4 (Ceylon) (*Corynodes*).

Material examined: Hills South of the Lake Kandy, 1 ex., 4. iv. 1975.

Distribution: Sri Lanka.

*Platycorynus ceylonensis* (JACOBY, 1908) Fig. 2hFauna India, Col., 2: 496 (Ceylon) (*Corynodes*).

Material examined: Udawattekela Sanctuary, Kandy, 2 exs., 30. iv. 1975, 2 exs., 17. v. 1975, 1 ex., 26. v. 1973.

Distribution: Sri Lanka.

*Xanthophorus flavopilosa* (JACOBY, 1887) Fig. 2iProc. Zool. Soc. London, 1887: 72 (Ceylon) (*Xanthonia*).

Material examined: Udawattekela Sanctuary, Kandy, 8 exs., 4. i. 1974, 4 exs., 9. xi. 1973, 4 exs., 30. iv. 1975, 2 exs., 23. i. 1974, 2 exs., 17. v. 1975, 2 exs., 19. ix. 1973, 3 exs., 21. ii. 1974, 1 ex., 19. ix. 1973, 2 exs., 9. viii. 1973, 1 ex., 6. ix. 1973, 1 ex., 9. viii. 1973, 1 ex., 23. i. 1974, 1 ex., 25. vii. 1973, 1 ex., 21. iii. 1973; Hills South of the Lake Kandy, 1 ex., 19. iii. 1974, 1 ex., 4. iv. 1975, 1 ex., 6. iv. 1975, 1 ex., 2. v. 1975, 1 ex., 18. v. 1975; Peradeniya, Kandy Distr.

Distribution: Sri Lanka.

*Nephrella elongata* JACOBY, 1863 Fig. 3a

J. Ent., 2: 155 (Ceylon).

Material examined: Udawattekela Sanctuary, Kandy, 1 ex., 17. v. 1975, 1 ex., 6. ix. 1973, 1 ex., 30. iv. 1975, 2 exs., 17. x. 1973, 1 ex., 21. iii. 1974, 1 ex., 9. viii. 1973; Hills South of the Lake Kandy, 2 exs., 2. v. 1975, 1 ex., 18. v. 1975; Horton Plains, Nuwaraeliya, 1 ex., 14. i. 1974.

Distribution: Sri Lanka.

*Hyperaxis semifasciata* (JACOBY, 1887) Fig. 3b-cProc. Zool. Soc. London, 1887: 70 (Ceylon) (*Demotina*).

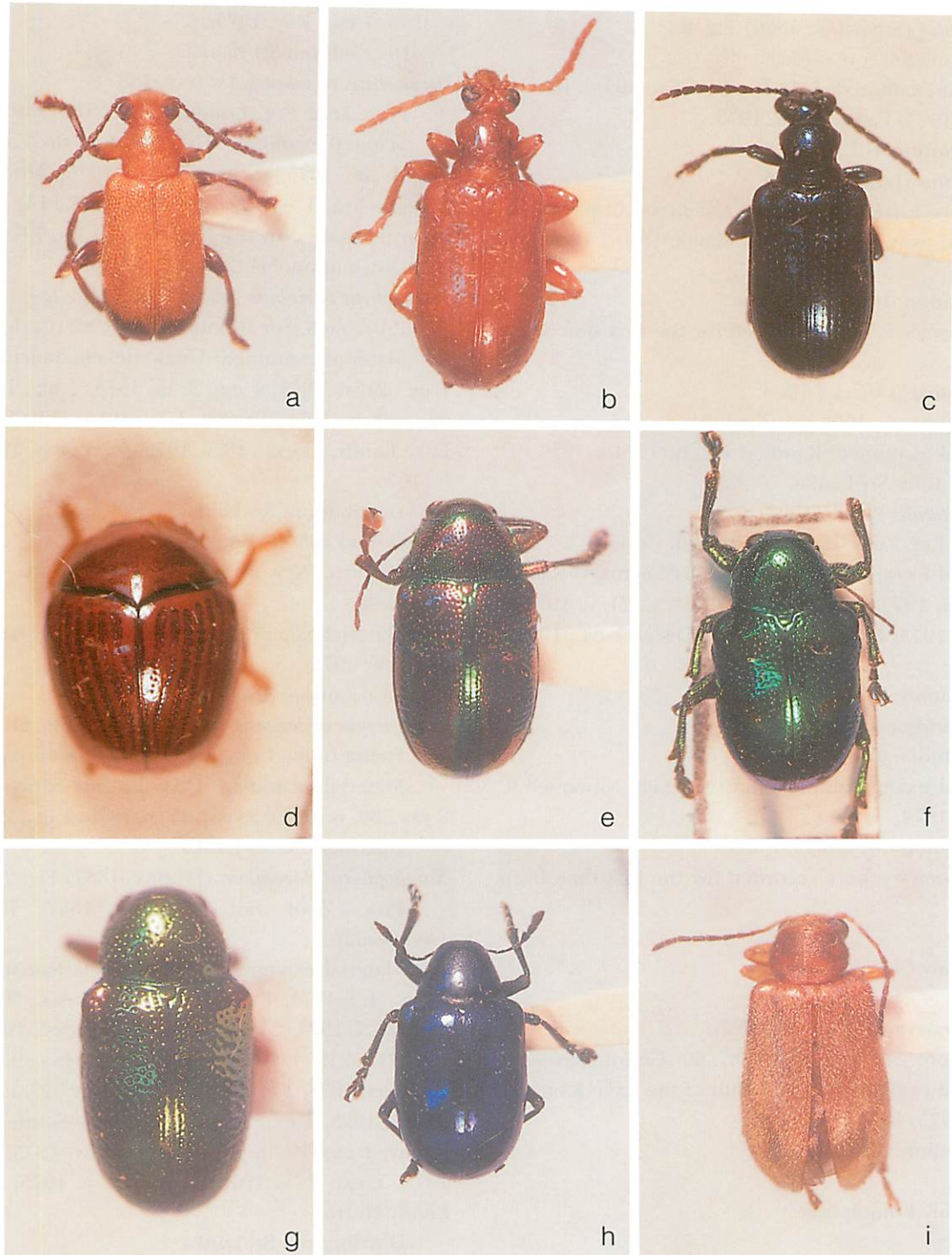


Fig. 2. a, *Zeugophora murrayi* (CLARK); b, *Lema greeni* JACOBY; c, *Lema nitidissima* JACOBY; d, *Adiscus porculus* (SUFFRIAN); e, *Dermorhytis ornatissima* BALY; f, *Dermorhytis kandyensis* JACOBY; g, *Dermorhytis variabilis* JACOBY; h, *Platycorynus ceylonensis* (JACOBY); i, *Xanthophorus flavopilosa* (JACOBY).

Material examined: Udawattekela Sanctuary, Kandy, 37 exs., 1. iv. 1975, 22 exs., 3. iii. 1975, 23 exs., 30. iv. 1975, 10 exs., 30. iv. 1975, 7 exs., 17. v. 1975, 9 exs., 9. xi. 1973, 8 exs., 6. ix. 1973, 4 exs., 4. i. 1974, 8 exs., 9. viii. 1973, 2 exs., 23. i. 1974, 2 exs., 21. ii. 1974, 3 exs., 17. x. 1973, 4 exs., 19. ix. 1973, 8 exs., 21. iii. 1974, 1 ex., 17. x. 1973, 1 ex., 25. viii. 1973; Hills South of the Lake Kandy,

11 exs., 18. v. 1975, 8 exs., 4. iv. 1975, 1 ex., 6. iii. 1975, 8 exs., 2. v. 1975.

Distribution: Sri Lanka.

*Demotina thoracica* JACOBY, 1887

Proc. Zool. Soc. London, 1887: 71 (Ceylon)

Material examined: Hills South of the Lake Kandy, 2 exs., 3. ii. 1974, 1 ex., 18. ii. 1974, 1 ex., 4. iii. 1975, 5 exs.,

19. iii. 1974.

Distribution: Sri Lanka.

*Pachnephorus bistriatus* MULSANT, 1852

Mem. Acad. Lyon, ser. 2, 2: 17 (Caramanie).

*convexicollis* Baly, 1867, Trans. Ent. Soc. London, ser. 3, 4: 95 (Macassar).

Material examined: Sigiriya, Matale Distr., 1 ex., 19. iv. 1975, 1 ex., 10. v. 1975.

Distribution: Europe, Africa, India, Sri Lanka, Philippines, Macassar.

This species is here recorded for the first time from Sri Lanka.

*Nodina ceylonensis* JACOBY, 1908

Fauna India, Col., 2: 294 (Ceylon).

Material examined: Udawattakela Sanctuary, Kandy, 3 exs., 6. ix. 1973, 2 exs., 19. ix. 1973, 1 ex., 4. i. 1974, 1 ex., 30. iv. 1975, 1 ex., 21. ii. 1974, 1 ex., 17. v. 1975, 1 ex., 1. iv. 1975, 1 ex., 25. ii. 1975.

Distribution: Sri Lanka.

*Nodina aeneicollis* JACOBY, 1895

Ann. Soc. Ent. Belg., 39: 271 (Southern Bomnbay).

Material examined: Udawattakela Sanctuary, Kandy, 1 ex., 9. viii. 1973, 1 ex., 1. iv. 1975, 1 ex., 3. iii. 1975.

Distribution: Sri Lanka, India.

*Tricliona ceylonensis* JACOBY, 1908 Fig. 3d

Fauna India, Col., 2: 476 (Ceylon).

Material examined: Udawattakela Sanctuary, Kandy, 3 exs., 6. ix. 1973, 3 exs., 17. v. 1975, 1 ex., 1. iv. 1975, 1 ex., 25. vii. 1973, 1 ex., 30. iv. 1975, 1 ex., 21. ii. 1974, 1 ex., 9. xi. 1973, 1 ex., 9. viii. 1973.

Distribution: Sri Lanka.

*Pagria signata* (MOTSCHULSKY, 1858)

Etud. Ent., 7: 110 (Burma) (*Metachroma*).

Material examined: Hills South of the Lake Kandy, 1 ex., 6. iii. 1975.

Distribution: Sri Lanka, India, Burma, Thailand, Laos, Vietnam, Philippines, Indonesia, Mironesia, Japan, Ryukyu Is., China, Taiwan, Korea, Siberia.

*Pagria ceylonensis* JACOBY, 1908 Fig. 3e

Fauna India, Col., 2: 357 (Ceylon).

Material examined: Udawattakela Sanctuary, Kandy, 8 exs., 19. ix. 1973, 5 exs., 23. i. 1974, 6 exs., 21. ii. 1974, 4 exs., 1. iv. 1975, 2 exs., 21. iii. 1974, 6 exs., 30. iv. 1975, 3 exs., 3. iii. 1975, 2 exs., 17. x. 1973, 2 exs., 4. i. 1974, 1 ex., 9. viii. 1973, 2 exs., 9. viii. 1973, 7 exs., 17. v. 1975; Hills South of the Lake Kandy, 3 exs., 4. iv. 1975, 2 exs., 6. iii. 1975, 2 exs., 2. v. 1975, 2 exs., 19. iii. 1974, 1 ex., 18. v. 1975; 1 ex., 8. i. 1974, 25 exs., 18. ii. 1974.

Distribution: Sri Lanka.

*Pagria costatipennis* JACOBY, 1887 Fig. 3f

Proc. Zool. Soc. London, 1887: 73 (Ceylon).

Material examined: Hills South of the Lake Kandy, 2

exs., 19. iii. 1974, 1 ex., 2. v. 1975, 4 exs., 8. i. 1974, 14. exs., 18. ii. 1974.

Distribution: S. India, Sri Lanka.

*Basilepta bistrigata* (JACOBY, 1908) Fig. 3g

Fauna India, Col., 2: 313 (Ceylon) (*Nodostoma*).

Material examined: Udawattakela Sanctuary, Kandy, 41 exs., 1. iv. 1975, 3 exs., 3. iii. 1975, 41 exs., 30. iv. 1975, 1 ex., 21. iii. 1974, 7 exs., 17. v. 1975; Hills South of the Lake Kandy, 8 exs., 4. iv. 1975, 2 exs., 18. v. 1975, 9 exs., 2. v. 1975, 1 ex., 19. iii. 1974.

Distribution: Sri Lanka.

*Basilepta lewsi* (JACOBY, 1887)

Proc. Zool. Soc. London, 1887: 77 (Ceylon) (*Nodostoma*).

Material examined: Horton Plains, Nuwaraeliya, 10 exs., 14. i. 1974; Mt. Pidurutalagala, Nuwaraeliya, 4 exs., 13. i. 1974.

Distribution: Sri Lanka.

*Basilepta clypeata* (JACOBY, 1887) Fig. 3h

Proc. Zool. Soc. London, 1887: 79 (Ceylon) (*Nodostoma*).

Material examined: Udawattakela Sanctuary, Kandy, 54 exs., 1. iv. 1975, 13 exs., 30. iv. 1975, 1 ex., 21s. iii. 1974, 4 exs., 17. v. 1975, 2 exs., 3. iii. 1975; Hills South of the Lake Kandy, 23 exs., 4. iv. 1975, 1 ex., 19. iii. 1974, 3 exs., 18. v. 1975, 8 exs., 2. v. 1975, 2 exs., 18. ii. 1974; Horton Plains, Nuwaraeliya.

Distribution: Sri Lanka.

*Basilepta longicornis* (JACOBY, 1887) Fig. 3i

Proc. Zool. Soc. London, 1887: 79 (Ceylon) (*Nodostoma*).

Material examined: Udawattakela Sanctuary, Kandy, 13 exs., 6. ix. 1973, 8 exs., 9. viii. 1973, 13 exs., 21. iii. 1974, 13 exs., 19. ix. 1973, 8 exs., 25. vii. 1973, 5 exs., 3. iii. 1975, 8 exs., 9. xi. 1973, 2 exs., 30. iv. 1975, 4 exs., 4. i. 1974, 5 exs., 17. x. 1973, 11 exs., 1. iv. 1975, 1 ex., 17. v. 1975, 1 ex., 21. ii. 1974; Hills South of the Lake Kandy, 7 exs., 4. iv. 1975, 7 exs., 19. iii. 1974, 3 exs., 18. v. 1975, 10 exs., 6. iii. 1975, 1 ex., 2. v. 1975, 1 ex., 18. ii. 1974, 6 exs., 4. iii. 1975, 1 ex., 19. iii. 1974.

Distribution: Sri Lanka.

*Basilepta bipunctata* (JACOBY, 1887) Fig. 4a

Proc. Zool. Soc. London, 1887: 73 (Ceylon) (*Nodostoma*).

Material examined: Udawattakela Sanctuary, Kandy, 2 exs., 23. i. 1974, 1 ex., 29. ix. 1973, 2 exs., 1. iv. 1975, 2 exs., 21. iii. 1974, 1 ex., 3. iii. 1975, 1 ex., 4. i. 1974; Hills South of the Lake Kandy, 1 ex., 2. v. 1975, 2 exs., 6. iii. 1975, 2 exs., 18. v. 1975, 2 exs., 18. ii. 1974.

Distribution: Sri Lanka.

*Basilepta kandyensis* sp. nov.

Body oval, convex. Generally reddish brown; antenna



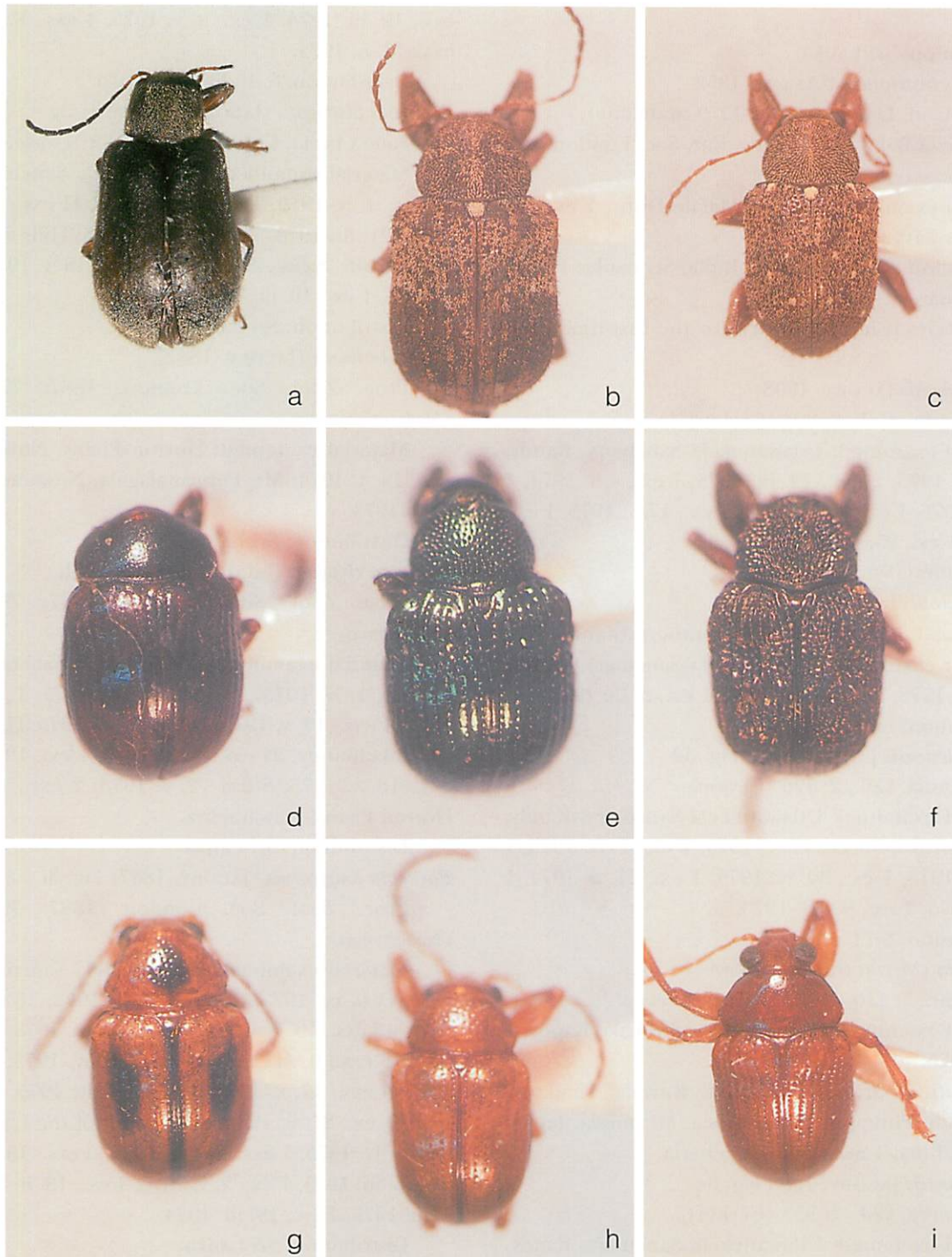


Fig. 3. a, *Nephrella elongata* JACOBY; b, *Hyperaxis semifasciata* (JACOBY); c, *Hyperaxis semifasciata* (JACOBY) var.; d, *Tricliona ceylonensis* JACOBY; e, *Pagria ceylonensis* JACOBY; f, *Pagria costatipennis* JACOBY; g, *Basilepta bistrigata* JACOBY; h, *Basilepta clypeata* JACOBY; i, *Basilepta longicornis* JACOBY.

with four or five apical segments infusate.

Head with vertex and fronto-clypeus distinctly and closely punctate, and their surfaces smooth and shining. Antenna robust, nearly  $2/3$  as long as body length, and in preapical segments nearly three times as long as wide; first segment long, robust, somewhat club-shaped; second robust, shortest, nearly half as long as

first; third slender, nearly twice as long as second; fourth nearly  $1\frac{1}{3}$  times as long as third, and fourth to tenth subequal to each other in length but stouter than preceding; eleventh slightly longer than tenth and its apex pointed. Pronotum transverse, nearly twice as wide as long; sides distinctly rounded, but not forming angle, and widest slightly before basal margin and distinctly nar-

rowed anteriorly; anterior sulcus along anterior margin distinct but interrupted at middle; anterior margin slightly rounded anteriorly and posterior margin widely rounded posteriorly; surface impressed by distinct punctures rather closely and their interstices smooth and shining; proepimeron smooth, and shining, without punctures. Scutellum subtriangular with apex rounded, surface slightly convex, smooth, shining, impunctate. Elytron oblong, basal portion raised with a transverse depression below; humerus distinctly raised; surface impressed by regularly arranged longitudinal rows of punctures, and these punctures distinct basally but obsolete near apex; interstices of rows of punctures smooth, shining.

Length 2.4-2.7 mm.

Distribution: Sri Lanka.

Holotype: Udawattekela Sanctuary, Kandy, 1. iv. 1975, A. OTAKE. Paratypes: Same locality as the holotype, 5 exs., 1. iv. 1975, 1 ex., 3. iii. 1975, 1 ex., 30. iv. 1975, A. OTAKE.

This new species resembles *Basilepta korhongensis* KIMOTO et GRESSITT, 1982, from Thailand, but differs in having the vertex and the frontoclypus distinctly punctate.

*Colasposoma robustum* JACOBY, 1881

Proc. Zool. Soc. London, 1881: 446 (India).

Material examined: Hills South of the Lake Kandy, 1 ex., 26. iii. 1975.

Distribution: S. India, Sri Lanka.

Subfamily Chrysomelinae

*Chrysolina templetoni* (BALY, 1860) Fig. 4b

J. Ent., 1: 93 (Ceylon) (*Chrysolina*).

Material examined: Mt. Pidurutaiagala, Nuwara Eliya, 7 exs., 13. i. 1974; Horion Plains, Nuwara Eliya, 1 ex., 14. i. 1974.

Distribution: Sri Lanka.

Subfamily Galerucinae

*Apophyllia crotchi* JACOBY, 1887

Proc. Zool. Soc. London, 1887: 107 (Ceylon).

Material examined: Monaragara, Monaragara Distr., 1 ex., 10. iv. 1975.

Distribution: S. India, Sri Lanka.

*Galerotella virida* (JACOBY, 1887) Fig. 4c-d

Proc. Zool. Soc. London, 1887: 105 (Ceylon) (*Galerucella*).

*simplicicollis* Jacoby, 1903, Ann. Soc. Ent. Belg., 47: 123 (Nilgiri Hills) (*Galerucella*).

Material examined: Udawattekela Sanctuary, Kandy,

2 exs., 6. ix. 1973, 2 exs., 23. i. 1974, 2 exs., 30. iv. 1975, 2 exs., 1. iv. 1975, 1 ex., 4. i. 1974.

Distribution: India, Sri Lanka.

*Galerucella placida* (BALY, 1878)

Cist. Ent., 2: 381 (Punjab).

Material examined: Kalgomuwa, Kandy Distr., 1 ex., 18. ii. 1974.

Distribution: India, Nepal, Sri Lanka, Burma, Thailand, Laos, Vietnam, Sumatra, Java.

This species is here recorded for the first time from Sri Lanka.

*Sastra ceylonensis* (JACOBY, 1887) Fig. 4e

Proc. Zool. Soc. London, 1887: 105 (Ceylon) (*Galerucella*).

Material examined: Udawattekela Sanctuary, Kandy, 1 ex., 1. iv. 1975, Hills South of the Lake Kandy, 3 exs., 6. iii. 1975, 2 exs., 2. v. 1975, 1 ex., 6. iii. 1975, 1 ex., 4. iii. 1975.

Distribution: Sri Lanka.

*Sastra lateralis* (JACOBY, 1887) Fig. 4f

Proc. Zool. Soc. London, 1887: 106 (Ceylon) (*Galerucella*).

Material examined: Hills South of the Lake Kandy, 1 ex., 19. iii. 1974, 1 ex., 8. i. 1974, 3 exs., 18. i. 1974.

Distribution: Sri Lanka.

*Sastroides dohertyi* (MAULIK, 1936)

Fauna India, Chrysomelidae, Galerucinae: 265 (Tenasserim) (*Sastra*).

Material examined: Hills South of the Lake Kandy, 1 ex., 6. iii. 1975, 4 exs., 4. iii. 1975; Kandy, 2 exs., 11. iv. 1957.

Distribution: Sri Lanka, Burma (Tenasserim).

This species is here recorded for the first time from Sri Lanka.

*Sastroides rugicollis* sp. nov. Fig. 1b

Oblong oval, elytron closely covered with fine pubescence. Generally reddish brown; head with middle of vertex blackish; scutellum generally pitchy black; elytron with humerus and an ill-defined longitudinal stripe along sutural margin blackish, in some case longitudinal stripe distinct only at basal part; antenna generally pitchy black; metasternum partly infuscate.

Head with vertex subrugosely impressed by large punctures, frontal tubercles contiguous, subquadrate, distinctly raised; surface smooth, shining, impunctate and their anterior angles inserted between antennal insertions; frontoclypeus subtriangular, surface smooth, shining, impunctate. Antenna slender, nearly 2/3 as long as body length; in preapical segments nearly three times as long as wide; first segment longest, robust, somewhat club-shaped; second shortest, slenderer than first, nearly half as long as first; third slenderer than second, nearly 1



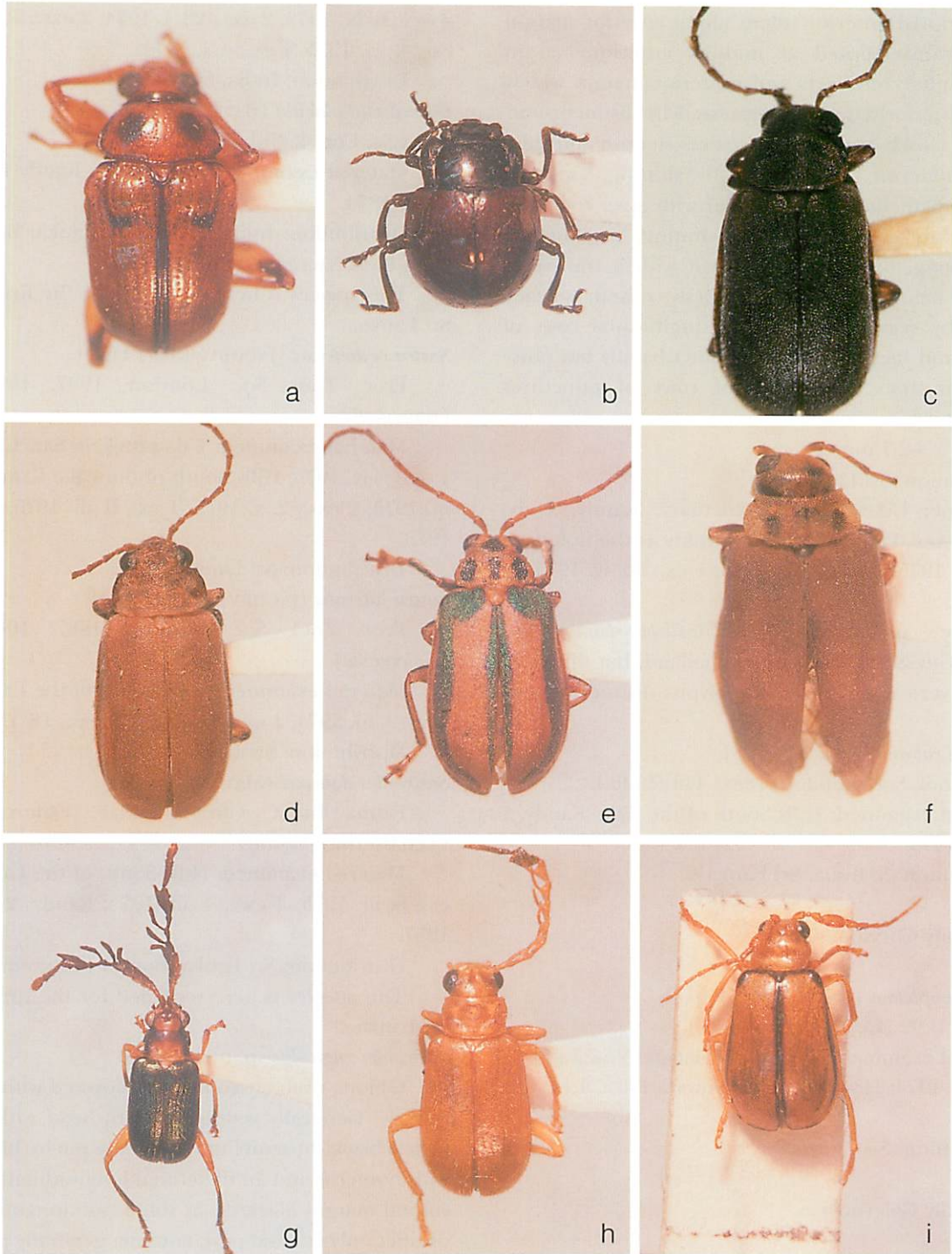


Fig. 4. a, *Basilepta bipunctata* JACOBY; b, *Chrysolina templetoni* BALY; c, *Galerotella virida* (JACOBY); d, *Galerotella virida* (JACOBY) var.; e, *Sastra ceylonensis* (JACOBY); f, *Sastra lateralis* JACOBY; g, *Xenorhina cericornis* BALY; h, *Xenorhina lewisii* JACOBY; i, *Aulacophora cincta* (FABRICIUS).

4/5 times as long as second; fourth subequal to third in length and shape; fifth nearly 4/5 as long as fourth in length; sixth nearly 4/5 as long as fifth in length, and sixth to tenth subequal to each other in length and length; eleventh subequal to tenth in length but its apex pointed. Pronotum transverse, nearly twice as wide as long; sides rounded, widest almost at middle, narrowed

anteriorly and posteriorly; anterior and posterior corners each with a setigerous pore; anterior margin slightly rounded posteriorly, and basal margin generally rounded posteriorly but slightly rounded anteriorly at middle; surface closely impressed by large punctures and with a pair of transverse depressions laterally and a shallow longitudinal median furrow. Scutellum convex, covered with fine



pubescens, subtriangular, and its apex rounded. Elytron slightly rounded laterally; surface closely covered with fine hairs, and distinctly and closely punctate; elytral epipleuron wider, and distinct until slightly before apex.

Length 4.2–4.5 mm.

Distribution: Sri Lanka.

Holotype: Mt. Pidurutatagala, Nuwara Eliya Distr., 25. iv. 1974, A. OTAKE. Paratype: 1 ex., same data as the holotype.

This new species somewhat resembles *Sastroides dohertyi* (MAULIK, 1936), from Burma, but differs from this species in being the body length shorter, and having the pronotum much wider and the surface closely impressed by the large punctures, and the elytron with somewhat ill-defined longitudinal stripe along the sutural margin and the humerus blackish.

*Xenorthra cervicornis* BALY, 1861 Fig. 4g

J. Ent., 1 (4): 299 (Ceylon).

Material examined: Udawattekela Sanctuary, Kandy, 6 exs., 21. iii. 1974, 2 exs., 4. i. 1974, 5 exs., 23. i. 1974, 3 exs., 3. iii. 1975, 5 exs., 6. ix. 1973, 7 exs., 21. ii. 1974, 3 exs., 25. vii. 1973, 3 exs., 1. iv. 1975, 3 exs., 9. xi. 1973, 1 ex., 19. ix. 1973, 1 ex., 9. viii. 1973, 1 ex., 17. x. 1973.

Distribution: Sri Lanka.

*Xenorthra lewisi* JACOBY, 1887 Fig. 4h

Proc. Zool. Soc. London, 1887: 108 (Ceylon)

Material examined: Hills South of the Lake Kandy, 4 exs., 18. v. 1975, 3 exs., 2. v. 1975, 3 exs., 4. iv. 1975, 1 ex., 19. iii. 1974, 1 ex., 6. iii. 1975.

Distribution: Sri Lanka.

*Aulacophora cincta* (FABRICIUS, 1775) Fig. 4i

Syst. Ent.: 119 (Tranquebar) (*Crioceris*).

*stevensi* Baly, 1886, J. Linn. Soc. London, 20: 22 (Ceylon, India, Dinapore).

Material examined: Udawattekela Sanctuary, Kandy, 4 exs., 17. x. 1973, 4 exs., 9. viii. 1973, 4 exs., 6. ix. 1973, 2 exs., 21. ii. 1974, 2 exs., 25. vii. 1973, 1 ex., 3. iii. 1975, 1 ex., 23. i. 1974, 1 ex., 19. iii. 1974; Hills South of the Lake Kandy, 2 exs., 19. ix. 1973, 1 ex., 4. iii. 1975.

Distribution: India, Sri Lanka.

*Aulacophora cruenta* (FABRICIUS, 1781) Fig. 5a

Spec. Ins., 1: 130 (India orientali) (*Chrysomela*).

Material examined: Hills South of the Lake Kandy, 1 ex., 4. iv. 1975, 1 ex., 30. v. 1975.

Distribution: India, Sri Lanka, Burma, Thailand, Laos, Vietnam, Hainan, Philippines, Malaya, Sumatra, Java, Celebes, Ceram, Macassar, Gilolo, Bachian.

*Aulacophora indica* (GMELIN, 1790)

Ed. Linnaeus, Syst. Nat. Ed. 13, 1, 4: 170 (India) (*Crioceris*).

Material examined: Katunayaka, Colombo Distr., 1 ex., 13. iii. 1974; Kalgomuwa, Kandy Distr., 1 ex., 1. i.

1974.

Distribution: India, Sri Lanka, Burma, Nepal, Bhutan, Andaman, Nicobar, Thailand, Cambodia, Laos, Vietnam, China, Hainan, Taiwan, Philippines, Ryukyu Is., Japan, Korea, Siberia, Sunda Is., Micronesia, New Guinea, Samoa, Fiji.

*Aulacophora lewisii* BALY, 1886

J. Linn. Soc. (Zool), 20: 24 (India, China, Malay Archipelago).

Material examined: Kandy, 1 ex., 16. iv. 1975.

Distribution: Sri Lanka, India, China, Taiwan, Ryukyu Is., Japan, SE Asia.

*Aulacophora impressa* (FABRICIUS, 1801) Fig. 5b

Syst. Eleuth., 1: 485 (Tranquebar) (*Galleruca*)

Anad & Cox, 1986, Ent. Abhand., Dresden, 50 (4): 83 (Madhya Pradesh, South India, Sri Lanka) (*Aulacophora*).

No material was examined. However, this species was recorded from Sri Lanka by Anad & Cox (1986).

Distribution: India, Sri Lanka.

*Hoplasoma ceylonense* JACOBY, 1886 Fig. 5c

Ann. Mus. Civ. Genova, 24: 82 (Ceylon).

Material examined: Udawattekela Sanctuary, Kandy, 1 ex., 17. v. 1975.

Distribution: Sri Lanka.

*Doryscus testaceus* JACOBY, 1887 Fig. 5d

Proc. Zool. Soc. London, 1887: 105 (Ceylon).

Material examined: Udawattekela Sanctuary, Kandy, 1 ex., 1. iv. 1975; Hills South of the Lake Kandy, 1 ex., 18. ii. 1974, 1 ex., 4. iii. 1975.

Distribution: Sri Lanka, India, Vietnam.

*Dercetes nietneri* (BALY, 1879) Fig. 5e-f

Ann. Mag. Nat. Hist., ser. 5, 4: 116 (Ceylon) (*Antipha*).

Material examined: Udawattekela Sanctuary, Kandy, 8 exs., 17. x. 1973, 3 exs., 30. iv. 1975, 2 exs., 1. iv. 1975, 2 exs., 25. vii. 1973, 1 ex., 3. iii. 1975, 2 exs., 23. i. 1974, 2 exs., 4. i. 1974, 2 exs., 6. ix. 1973, 1 ex., 9. xi. 1973; Hills South of the Lake Kandy, 3 exs., 19. iii. 1974, 1 ex., 4. iv. 1975, 1 ex., 18. v. 1975, 6 exs., 6. iii. 1975, 3 exs., 4. iii. 1975, 1 ex., 19. iii. 1974, 1 ex., 4. iv. 1975.

Distribution: Sri Lanka.

*Monolepta kanarensis* JACOBY, 1896 Fig. 5g

Ann. Soc. Ent. Belg., 40: 293 (Kanara).

Material examined: Udawattekela Sanctuary, Kandy, 3 exs., 17. v. 1975, 4 exs., 21. ii. 1974, 3 exs., 9. xi. 1973, 2 exs., 3. iv. 1975, 2 exs., 21. iii. 1974, 2 exs., 17. x. 1973, 1 ex., 4. i. 1974, 1 ex., 23. i. 1974, 1 ex., 25. vii. 1973, 1 ex., 1. iv. 1975.

Distribution: India, Sri Lanka.

This species is here recorded for the first time from Sri Lanka.



Fig. 5. a, *Aulacophora cruenta* (FABRICIUS); b, *Aulacophora impressa* FABRICIUS; c, *Hoplasoma ceylonensis* JACOBY; d, *Doryscus testaceus* JACOBY; e, *Dercetes nietneri* (BALY); f, *Dercetes nietneri* (BALY) var.; g, *Monolepta kanarensis* JACOBY; h, *Monolepta nigripes* (OLIVIER) var.; i, *Monolepta bengalensis* (WEISE).

*Monolepta nigripes* (OLIVIER, 1808) Fig. 5h  
Entomolog., 6: 648 (Bengal) (*Galeruca*).

Material examined: Udawattekela Sanctuary, Kandy, 1 ex., 17. v. 1975, 1 ex., 4. i. 1974, 1 ex., 1974; Hills South of the Lake Kandy, 1 ex., 2. v. 1975; Peradeniya, Kandy Distr, 1 ex., 8. i. 1974; Kandy, 1 ex., 1. ix. 1973.

Distribution: India, Sri Lanka, Burma, Thailand,

Cambodia, Laos, Vietnam, Malaya, Celebes, Borneo, Java, Sumatra, Philippines.

*Monolepta bengalensis* (WEISE, 1921) Fig. 5i

Ark. f. Zool., 14 (1): 103 (new name for *brunneus* JACOBY, nec Crotch) (*Luperodes*).

*brunneus* Jacoby, 1903, Ann. Soc. Ent. Belg., 47: 118 (Nilgiri Hills) (*Luperodes*).



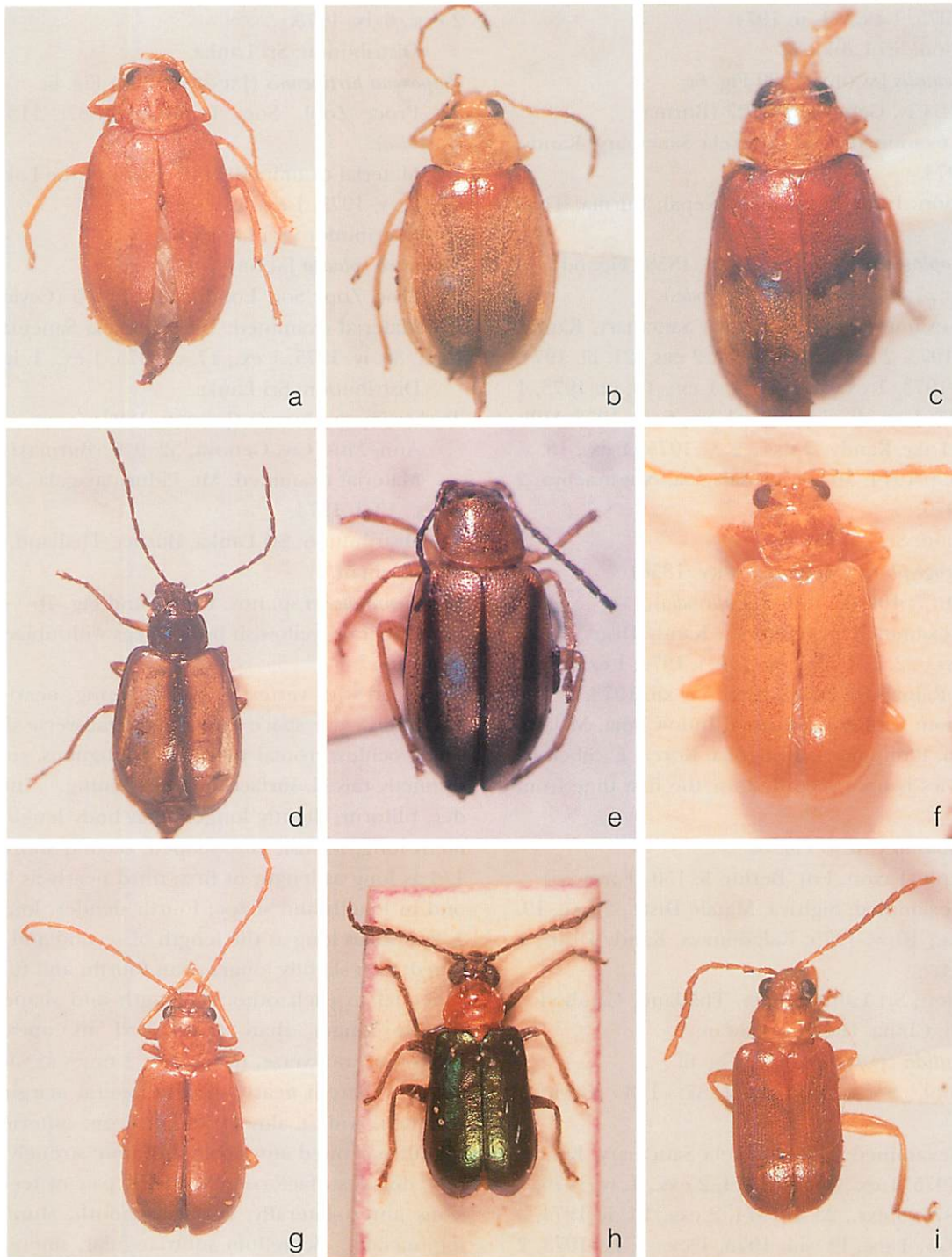


Fig. 6. a, *Monolepta straminea* (HAROLD); b, *Monolepta flavicornis* (JACOBY); c, *Monolepta orientalis* JACOBY; d, *Monolepta alboplagiata* (MOTSCHULSKY); e, *Monolepta sextineata* CHUJO; f, *Cneoranela pallida* (JACOBY); g, *Acroxena fascialis* (BALY); h, *Taumacera splendens* (DUVIVIER); i, *Palpoxena hirtipennis* (JACOBY).

Material examined: Udawattekela Sanctuary, Kandy, 3 exs., 19. ix. 1973, 1 ex., 3. iii. 1975, 2 exs., 6. ix. 1973, 8 exs., 9. viii. 1973, 1 ex., 23. i. 1974, 2 exs., 17. x. 1973, 5 exs., 21. ii. 1974.

Distribution: India, Sri Lanka.

***Monolepta straminea*** (HAROLD, 1880) Fig. 6a  
Stett. Ent. Zeit., 41 (Ceylon) (*Ochralea*).

Material examined: Udawattekela Sanctuary, Kandy, 1 ex., 21. iii. 1974, 1 ex., 17. v. 1975, 1 ex., 4. i. 1974.

Distribution: Sri Lanka.

***Monolepta flavicornis*** (JACOBY, 1887) Fig. 6b  
Proc. Zool. Soc. London, 1887: 110 (Ceylon)  
(*Luperodes*).

Material examined: Udawattekela Sanctuary, Kandy,

1 ex., 17. v. 1975, 1 ex., 21. ii. 1974.

Distribution: Sri Lanka.

*Monolepta orientalis* JACOBY, 1889 Fig. 6c

Ann. Mus. Civ. Genova, 27: 227 (Burma).

Material examined: Udawattekela Sanctuary, Kandy, 2 exs., 4. i. 1974.

Distribution: India, Sri Lanka, Nepal, Burma, Thailand.

*Monolepta alboplagiata* (MOTSCHULSKY, 1858) Fig. 6d

Etud. Ent., 7: 102 (Ceylon) (*Luperodes*).

Material examined: Udawattekela Sanctuary, Kandy, 2 exs., 17. x. 1973, 2 exs., 21. ii. 1974, 2 exs., 21. iii. 1974, 1 ex., 25. vii. 1973, 1 ex., 4. i. 1974, 1 ex., 19. ix. 1973, 1 ex., 17. v. 1975, 1 ex., 9. viii. 1973, 1 ex., 6. ix. 1973; Hills South of the Lake Kandy, 2 exs., 2. v. 1975, 1 ex., 18. v. 1975, 1 ex., 8. i. 1974; Mt. Pidurutalagala, Nuwaraeliya, 2 exs., 25. iv. 1975.

Distribution: Sri Lanka.

*Monolepta hieroglyphica* (MOTSCHULSKY, 1858)

Etud. Ent., 7: 104 (E. India) (*Luperodes*).

Material examined: Kalgomuwa, Kandy Distr., 1 ex., 1. i. 1974, 3 exs., 22. i. 1974, 2 exs., 29. i. 1974, 1 ex., 27. ii. 1975; Eratna, Rainapura Distr., 1 ex., 27. xii. 1973.

Distribution: Sri Lanka, Burma, Indo-China, Malaya, China, Taiwan, Philippines, Mongolia, Korea, E. Sibeira.

This species is here recorded for the first time from Sri Lanka.

*Monolepta sexlineata* CHUJO Fig. 6e

Arb. Morph. Taxon. Ent. Berlin, 5: 150 (Formosa).

Material examined: Sigiriya, Matale Distr., 2 exs., 19. iv. 1975, 2 exs., 10. v. 1975; Kalgomuwa, Kandy Distr., 1 ex., 29. i. 1974.

Distribution: Sri Lanka, India, Thailand, Cambodia, Laos, Vietnam, China, Hainan, Taiwan.

*Cneoraneella pallida* (JACOBY, 1887) Fig. 6f

Proc. Zool. Soc. London, 1887: 113 (Ceylon) (*Cneorane*).

Material examined: Udawattekela Sanctuary, Kandy, 9 exs., 3. iii. 1975, 1 ex., 21. iii. 1974, 2 exs., 1. iv. 1975, 6 exs., 30. iv. 1975, 3 exs., 23. i. 1974, 2 exs., 21. ii. 1974, 3 exs., 17. v. 1975, 1 ex., 19. viii. 1973, 1 ex., 6. ix. 1973, 2 exs., 119. ix. 1973, 1 ex., 25. vii. 1973; Hills South of the Lake Kandy, 1 ex., 18. v. 1975, 1 ex., 6. iii. 1975.

Distribution: Sri Lanka.

*Acroxena fascialis* (BALY, 1886) Fig. 6g

J. Linn. Soc. London, 20: 27 (Ceylon) (*Aenidea*).

Material examined: Udawattekela Sanctuary, Kandy, 1 ex., 30. iv. 1975, 1 ex., 1. iv. 1975, 1 ex., 21. iii. 1974.

Distribution: Sri Lanka.

*Taumacera splendens* (DUVIVIER, 1885) Fig. 6h

Stett. Ent. Zeit., 46: 392 (Ceylon) (*Cerophysa*).

Material examined: Udawattekela Sanctuary, Kandy,

2 exs., 6. ix. 1973.

Distribution: Sri Lanka.

*Palpoxena hirtipennis* (JACOBY, 1887) Fig. 6i

Proc. Zool. Soc. London, 1887: 113 (Ceylon) (*Aenidea*).

Material examined: Hills South of the Lake Kandy, 1 ex., 18. v. 1975, 1 ex., 2. v. 1975.

Distribution: Sri Lanka.

*Mimastra robusta* JACOBY, 1887 Fig. 7a

Proc. Zool. Soc. London, 1887: 105 (Ceylon)

Material examined: Udawattekela Sanctuary, Kandy, 1 ex., 30. iv. 1975, 1 ex., 17. v. 1975, 1 ex., 1. iv. 1975.

Distribution: Sri Lanka.

*Trichomimastra hirsuta* (JACOBY, 1892)

Ann. Mus. Civ. Genova, 32: 945 (Burma) (*Mimastra*).

Material examined: Mt. Pidurutalagala, Nuwaraeliya, 2 exs., 13. i. 1974.

Distribution: Sri Lanka, Burma, Thailand, Laos, Vietnam, Hainan.

*Hyphaenia otakei* sp. nov. Fig. 1c and Fig. 7b

Generally yellowish brown; legs with tibiae somewhat infusate.

Head with vertex smooth, shining, nearly impunctate; interocular space wider than transverse diameter of single oculus; frontal tubercles contiguous, subquadrate, distinctly raised, surface smooth shining. Antenna slender, filiform, slightly longer than body length; first segment long, robust, club-shaped; second shortest, nearly 1/4 as long as length of first; third nearly as long as second in length and shape; fourth slender, long, nearly 4 1/2 times as long as the length of second and third combined; fifth slightly longer than fourth, and fifth to tenth subequal to each other in length and shape; eleventh slightly longer than tenth and its apex pointed. Pronotum transverse, nearly 1 1/2 times as wide as long; anterior margin nearly straight; lateral margin distinctly rounded, widest almost at 1/4 from anterior margin, slightly narrowed anteriorly and more strongly so posteriorly; dorsal surface convex, with a pair of feeble depressions antero-laterally; surface smooth, shining, nearly impunctate. Scutellum subtriangular, smooth, shining. Elytron with lateral margin almost straight and slightly widened posteriorly and apex rounded, surface smooth, shining, closely and strongly punctate, and their interstices subequal to average diameter of punctures.

Length: 3.8–4.8 mm.

Distribution: Sri Lanka.

Holotype: Udawattekela Sanctuary, Kandy, 21. ii. 1974, H. OTAKE. Paratypes: Same locality as the holotype, 5 exs., 17. x. 1973, 1 ex., 9. xi. 1973, 2 exs., 1. iv. 1975, 1 ex., 3. iii. 1975, 2 exs., 30. iv. 1975, 8 exs., 21. ii. 1974, 1 ex., 21. iii. 1974, 3 exs., 6. ix. 1973, 1 ex., 23. i. 1974.



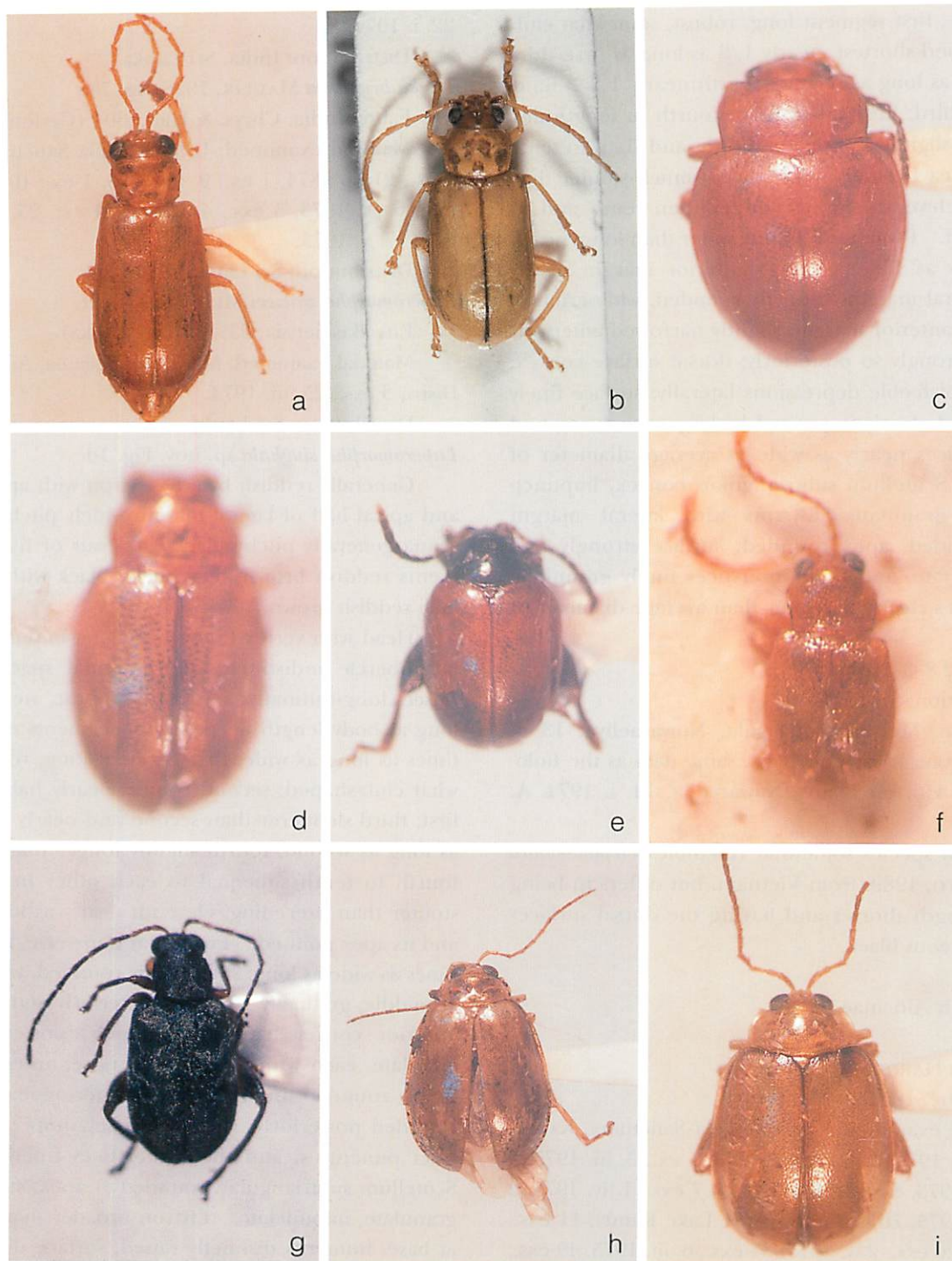


Fig. 7. a, *Mimastra robusta* JACOBY; b, *Hyphaenia otakei* sp. nov.; c, *Nisotra badia* HAROLD; d, *Podagrira ceylonensis* JACOBY; e, *Lanka brunnea* MAULIK; f, *Orthaltica ceylonensis* (SCHERER); g, *Hespera lomasa* MAULIK; h, *Hyphasis dhusara* (MAULIK); i, *Hyphasis sita* (MAULIK).

This new species somewhat resembles *Hyphaenia fulva* KIMOTO, 1989, from Vietnam, but differs in being the body length shorter and having the antenna normal in the male specimens.

*Hoplosaenidea strigiceps* sp. nov. Fig. 1a

Generally cupreous black with slight greenish luster; antenna entirely reddish brown; legs reddish brown with

tibiae slightly infuscate; abdomen yellowish brown.

Head with vertex finely granulate, sparsely impressed by distinct punctures, interocular space much wider than transverse diameter of single oculus; frontal tubercles contiguous, subtriangular, distinctly raised, surface smooth, shining. Antenna slender, nearly 2/3 as long as body length, in preapical segments nearly three times as

long as wide; first segment long, robust, somewhat club-shaped; second shortest, nearly 1/3 as long as first; third 1 2/5 times as long as second; fourth nearly 1 2/3 times as long as third; fifth subequal to fourth in length and shape; sixth slightly shorter than fifth, and sixth to tenth subequal to each other in length but much stouter than preceding; eleventh slightly longer than tenth and its apex pointed. Pronotum slightly wider than long, nearly 1 1/6 times as wide as long; anterior margin nearly straight; lateral margin distinctly rounded, widest almost at 1/3 from anterior margin, slightly narrowed anteriorly and more strongly so posteriorly; dorsal surface convex, with a pair of feeble depressions laterally; surface finely granulate and closely impressed by large punctures, and their interstices nearly as wide as average diameter of punctures. Scutellum subtriangular, convex, impunctate, finely granulate. Elytron with lateral margin subparallel-sided, apex rounded; surface strongly and closely punctate, and their interstices finely granulate, and interstices clearly narrower than average diameter of punctures.

Length 2.8–3.2 mm.

Distribution: Sri Lanka.

Holotype: Mt. Pidurutalagala, Nuwaraeliya, 13. i. 1975, A. OTAKE. Paratypes: 1 ex., same data as the holotype. 5 exs., Horton Plains, Nawaraelia, 14. i. 1974. A. OTAKE.

This new species somewhat resembles *Hoplosaenidea rugosa* KIMOTO, 1989, from Vietnam, but differs in being the body length shorter and having the dorsal surfaces entirely cupreous black.

#### Subfamily Alticinae

*Nisotra badia* HAROLD, 1876 Fig. 7c

Col. Hefte, 16: 230 (Ceylon).

Material examined: Udawattekela Sanctuary, Kandy, 4 exs., 21. ii. 1974, 1 ex., 9. xi. 1973, 1 ex., 3. iii. 1975, 3 exs., 17. x. 1973, 6 exs., 19. ix. 1973, 7 exs., 1. iv. 1975, 2 exs., 17. v. 1975; Hills South of the Lake Kandy, 11 exs., 18. v. 1975, 20 exs., 2. v. 1975, 31 exs., 6. iii. 1975, 49 exs., 4. iv. 1975, 1 ex., 19. iii. 1974, 4 exs., 8. i. 1974.

Distribution: Sri Lanka.

*Podagrica ceylonensis* JACOBY, 1899 Fig. 7d

Entomolog., 32: 82 (Ceylon).

Material examined: Hills South of the Lake Kandy, 3 exs., 19. iii. 1974, 6 exs., 18. v. 1975, 1 ex., 6. iii. 1975, 1 ex., 4. iv. 1975, 2 exs., 8. i. 1974, 4 exs., 8. i. 1974.

Distribution: Sri Lanka.

*Chaetocnema (Chaetocnema) concinnipennis* BALY, 1877

Trans. Ent. Soc. London, 1877: 170 (India).

Material examined: Kalgomuwa, Kandy Distr., 2 exs.,

22. i. 1974.

Distribution: India, Sri Lanka.

*Lanka brunanea* MAULIK, 1926 Fig. 7e

Fauna India, Chrys. & Halt.: 304 (Ceylon).

Material examined: Udawattekela Sanctuary, Kandy, 1 ex., 21. ii. 1874, 1 ex., 9. xi. 1973, 1 ex., 19. ix. 1973, 2 exs., 6. ix. 1973, 5 exs., 4. i. 1974, 1 ex., 25. vii. 1973, 3 exs., 17. x. 1973.

Distribution: Sri Lanka.

*Luperomorpha zaitzevi* MEDVEDEV, 2001

Ent. Basiliensia, 23: 159 (Sri Lanka).

Material examined: Maha-Illuppallama, Anuradhapura Distr., 3 exs., 25. iii. 1974.

Distribution: Sri Lanka.

*Luperomorpha singhala* sp. nov. Fig. 1d

Generally reddish brown; elytron with apical margin and apical half of lateral margin widely pitchy black; antenna generally pitchy black with four or five basal segments reddish brown; legs pitchy black with tibiae and tarsi reddish brown.

Head with vertex finely granulate, impunctate; frontal tubercle indistinct; inter-antennal space distinctly raised longitudinally. Antenna robust, nearly 2/3 as long as body length, in preapical segments nearly 2 1/2 times as long as wide; first segment long, robust, somewhat club-shaped; second robust, nearly half as long as first; third slenderer than second and nearly 1 2/3 times as long as second; fourth slightly longer than third, and fourth to tenth subequal to each other in length but stouter than preceding; eleventh nearly as long as tenth and its apex pointed. Pronotum transverse, nearly 1 1/2 times as wide as long; sides feebly rounded, widest almost at middle, gradually narrowed anteriorly and posteriorly; anterior corner truncate obliquely, posterior corner angulate, each with a setigerous pore; anterior margin feebly rounded anteriorly and posterior margin widely rounded posteriorly; surface sparsely impressed by distinct punctures, and their interstices finely granulate. Scutellum subtriangular, rounded at apex, surface finely granulate, impunctate. Elytron broader than prothorax at base, humerus distinctly raised, surface distinctly and closely punctate, and their interstices finely granulate.

Length 2.3 mm.

Distribution: Sri Lanka.

Holotype: Hills South of the Lake Kandy, 4. iv. 1975, A. Otake. Paratype: 1 ex., Udawattekela Sanctuary, Kandy, 23. i. 1974, A. OTAKE.

This new species somewhat resembles *Luperomorpha rubra* CHEN, 1933, Tonkin, but differs in having the apical margin and the apical half of lateral margin of elytron widely pitchy black.

***Longitarsus recticollis*** JACOBY, 1898

Ann. Soc. Ent. Belg., 42: 188 (Culcutta).

Material examined: Mt. Pidurutalagala, Nuwaraeliya, 1 ex., 13. i. 1974; Peradeniya, Kandy Distr., 1 ex., 26. xii. 1973.

Distribution: India, Sri Lanka.

***Longitarsus rangoonensis*** JACOBY, 1892

Ann. Mus. Civ. Genova, 32: 920 (Rangoon).

Material examined: Horton Plains, Nuwaraeliya, 1 ex., 14. i. 1974.

Distribution: Afghanistan, India, Nepal, Sri Lanka, Burma, Thailand, Vietnam, China, Borneo, Philippines.

This species is here recorded for the first time from Sri Lanka.

***Longitarsus lewisi*** MAULIK, 1926

Fauna India, Chrys. &amp; Halt.: 342 (Ceylon).

Material examined: Mt. Pindurutalagala, Nuwaraeliya, 4 exs., 13. i. 1974.

Distribution: Sri Lanka.

***Longitarsus belgaumensis*** JACOBY, 1896

Ann. Soc. Ent. Belg., 40: 260 (Belgaum).

Material examined: Hills South of the Lake Kandy, 1 ex., 18. ii. 1974. Distribution: India, Sri Lanka.

***Aphthona andrewesi*** JACOBY, 1896

Ann. Soc. Ent. Belg., 40: 256 (India).

Material examined: Udawattekela Sanctuary, Kandy, 4 exs., 19. ix. 1973, 1 ex., 21. ii. 1974, 3 exs., 23. i. 1974, 3 exs., 9. xi. 1973, 2 exs., 6. ix. 1973, 1 ex., 25. vii. 1973, 1 ex., 25. vii. 1973, 1 ex., 4. i. 1974, 1 ex., 17. x. 1973.

Distribution: India, Sri Lanka.

This is the first record of this species from Sri Lanka.

***Aphthona violaceomicans*** CHEN, 1936

Sinensia, 7 (1): 83 (Ceylon).

Material examined: Udawattekela Sanctuary, Kandy, 2 exs., 25. vii. 1973, 3 exs., 6. ix. 1973, 1 ex., 17. x. 1973, 1 ex., 4. i. 1974, 1 ex., 19. ix. 1973.

Distribution: Sri Lanka.

***Aphthona vicina*** JACOBY, 1887

Proc. Zool. Soc. London, 1887: 86 (Ceylon).

Material examined: Udawattekela Sanctuary, Kandy, 4 exs., 19. ix. 1973, 4 exs., 9. viii. 1973, 1 ex., 9. xi. 1973, 1 ex., 23. i. 1974, 1 ex., 21. iii. 1974, 2 exs., 25. vii. 1973, 1 ex., 9. xi. 1973, 3 exs., 4. i. 1974, 4 exs., 6. ix. 1973, 1 ex., 1. iv. 1975; Hills South of the Lake Kandy, 1 ex., 2. v. 1975, 2 exs., 4. i. 1974, 1 ex., 6. iii. 1975, 3 exs., 18. ii. 1974.

Distribution: Sri Lanka.

***Aphthona dorsalis*** (MOTSCHULSKY, 1866)Bull. Soc. Nat. Mosc., 39: 419 (Ceylon) (*Elytropachys*).

Material examined: Udawattekela Sanctuary, Kandy, 1 ex., 25. ii. 1975; Hills South of the Lake Kandy, 5 exs., 6. iii. 1975, 2 exs., 19. iii. 1974, 1 ex., 8. i. 1974, 1 ex., 18. ii.

1974; Mt. Pidurutalagala, Nuwaraeliya, 7 exs., 13. i. 1974.

Distribution: Sri Lanka.

The redescription of type series was given by OGLOBLIN (1930).

***Trachyaphthona lewisi*** (JACOBY, 1887)Proc. Zool. Soc. London, 1887: 85 (Ceylon) (*Aphthona*).

Material examined: Udawattekela Sanctuary, Kandy, 1 ex., 4. i. 1974; Hills South of the Lake Kandy, 1 ex., 6. iii. 1975, 1 ex., 18. v. 1975.

Distribution: Sri Lanka.

***Trachyaphthona ceylonensis*** (JACOBY, 1887)

Proc. Zool. Soc. London, 1887: 85 (Ceylon).

Material examined: Mt. Pindurutalagala, Nuwaraeliya, 3 exs., 13. i. 1974. Horton Plains, Nuwaraeliya, 1 ex., 14. i. 1974.

Distribution: Sri Lanka.

***Trachyaphthona lankana*** MEDVEDEV, 2001

Ent. Basiliensia, 23: 160 (Sri Lanka).

Material examined: Udawattekela Sanctuary, Kandy, 4 exs., 23. i. 1974, 2 exs., 4. i. 1974, 4 exs., 17. v. 1975, 1 ex., 1. iv. 1975, 1 ex., 6. ix. 1973.

Distribution: Sri Lanka.

***Ceylonaltica saueri*** DOEBERL, 1996

Ent. Blatt., 92: 111 (Sri Lanka).

Material examined: Mt. Pladarutalagala, Nuwaraeliya, 6 exs., 13. i. 1974. Hills South of the Lake Kandy, 1 ex., 18. ii. 1974.

Distribution: Sri Lanka.

***Ceylonaltica nigripes*** sp. nov. Fig. 1e

Generally greenish black; head with fronto-clypeus dark reddish brown; antenna pitchy black with four or five basal segments more brownish; legs generally dark reddish brown with femora pitchy black.

Head with vertex finely shagreened, nearly impunctate; frontal tubercles distinctly raised, oblique, subtriangular, contiguous, surface finely shagreened; fronto-clypeus subtriangular, surface finely shagreened. Antenna robust, nearly 2/3 as long as body length, in preapical segments nearly half as wide as long; first segment long, robust, somewhat club-shaped; second robust nearly half as long as first in length; third nearly 1 1/2 times as long as second, and third to tenth subequal to each other in length but slightly stouter than preceding; eleventh slightly longer than tenth and its apex pointed. Pronotum transverse, nearly 1 2/3 times as wide as long; sides widely rounded and widest almost at 1/3 from anterior margin, and slightly narrowed anteriorly and more strongly so posteriorly; anterior corner truncate, thickened, posterior corner angular, each with a setigerous pore; anterior margin nearly straight, posterior margin widely rounded posteriorly; dorsal surface finely

shagreened and sparsely impressed by distinct punctures, and with a pair of shallow depressions antero-laterally. Scutellum subtriangular, rounded at apex, surface finely shagreened, nearly impunctate. Elytron broader than prothorax at base, humerus distinctly raised, surface closely impressed by strong punctures and their interstices finely shagreened.

Length 2.9–3.2 mm.

Distribution: Sri Lanka.

Holotype: Horton Plains, Nuwaraeliya, 14. i. 1974, A. OTAKE. Paratypes: 1 ex., same data as the holotype. 1 ex., Mt. Pladarutalagala, Nuwaraeliya, 13. i. 1974, A. OTAKE.

This new species resembles *Ceylonaltica saueri* DOEBERL, 1996, from Ceylon, but differs in having the legs more blackish and the surface of elytron finely chagreened.

*Manobia apicicornis* JACOBY, 1887

Proc. Zool. Soc. London, 1887: 89 (Ceylon).

Material examined: Hills South of the Lake Kandy, 1 ex., 18. ii. 1974.

Distribution: Sri Lanka.

*Orthaltica ceylonensis* (SCHERER, 1971) Fig. 7f

Ent. Arb. Mus. Frey, 22: 29 (Ceylon) (*Livolia*).

Material examined: Udawattekela Sanctuary, Kandy, 1 ex., 4. i. 1974, 2 exs., 6. ix. 1973.

Distribution: Sri Lanka.

*Orthaltica nuwaraeliyana* sp. nov. Fig. 1h

Generally pitchy black; head with labrum reddish brown; antenna reddish brown with three or four apical segments infusate; legs generally reddish brown with femora largely pitchy black.

Head with vertex feebly swollen, smooth, nearly impunctate; frontal tubercles distinct but not prominent. Antenna robust, nearly 3/4 as long as body length, in preapical segments nearly as long as wide; first segment robust, somewhat club-shaped; second robust, nearly as long as first; third nearly half as long as second, slenderer; fourth subequal to third in length and shape; fifth about 1 2/3 times as long as fourth, and fifth to tenth subequal to each other in length but stouter than preceding; eleventh subequal to tenth in length but its apex pointed. Pronotum transverse, nearly 1 1/4 times as wide as long; anterior margin nearly straight; basal margin feebly rounded posteriorly; lateral margin rounded, widest almost at 1/3 from anterior margin, and serrated; disc moderately convex, with a fairly distinct transverse groove parallel to basal margin; surface strongly and closely punctate, and interstices of punctures smooth and narrower than average diameter of punctures. Scutellum small, subtriangular, and its apex rounded. Elytron convex, with sides rounded, and strongly narrowed posteriorly and rounded at apex; surface impressed by regularly

arranged eleven longitudinal rows of strong punctures, and interstices of rows of punctures smooth, shining, and narrower than average diameter of punctures.

Length 1.4–1.5 mm.

Distribution: Sri Lanka.

Holotype: Mt. Pidurutalagala, Nuwaraeliya, 13. i. 1974, A. OTAKE. Paratypes: 2 exs., same data as the holotype.

This new species resembles *Orthaltica ceylonensis* (SCHERER), 1971, from Ceylon, but differs in having the dorsal surfaces generally pitchy black and the punctures of pronotum stronger. Also from *Orthaltica minuta* (JACOBY), 1887, from Ceylon, differs in having the lateral margin of pronotum serrated.

*Lankanaltica* gen. nov.

Generally oblong oval; dorsal surfaces not covered with hairs; head with frontal tubercle indistinct, not raised; inter-antennal space broad, not raised; antenna eleven segmented, robust, nearly 2/3 as long as length of body; pronotum with antebasal transverse impression distinct, delimited sides by a pair of distinct short longitudinal impressions; elytron impressed by semiregularly arranged eleven longitudinal rows of punctures; anterior coxal cavity closed posteriorly.

Type species: *Lankanaltica fulva* sp. nov.

Gender: Feminine.

This new genus resembles *Orthocrepis* WEISE, but differs in having the anterior coxal cavity closed posteriorly, the frontal tubercles of head not distinctly raised and the elytron impressed by the semiregularly arranged longitudinal rows of punctures.

*Lankanaltica fulva* sp. nov. Fig. 1g

Oblong oval, convex. Generally yellowish brown; elytron with lateral and apical margins narrowly reddish brown; antenna pitchy brown with five or six basal segments yellowish brown.

Head with vertex sparsely impressed by fine punctures; frontal tubercle not raised; inter-antennal space broad, not raised; fronto-clypeus subtriangularly raised at middle, and surface closely impressed by distinct punctures. Antenna robust, nearly 2/3 as long as length of body, in preapical segments nearly 1 3/4 times as long as wide; first segment long, robust, somewhat club-shaped; second robust, nearly 3/4 as long as first; third slender, slightly shorter than second; fourth subequal to third in length and shape; fifth nearly 1 1/3 times as long as fourth in length, and fifth to tenth subequal to each other in length but much stouter than preceding; eleventh 1 1/2 times as long as tenth and its apex pointed. Pronotum transverse, nearly 1 4/5 times as wide as long; sides distinctly rounded, widest almost at middle, and narrowed anteriorly and posteriorly; anterior corner



obliquely truncate; anterior margin slightly rounded anteriorly, and basal margin widely rounded posteriorly; surface convex, finely shagreened, closely impressed by distinct punctures; antebasal transverse impression deep, sinuate in middle and delimited sides by a pair of distinct short longitudinal impressions. Scutellum semicircular, surface finely shagreened, impunctate. Elytron convex, distinctly widened posteriorly and rounded at apex, surface impressed by semiregularly arranged eleven longitudinal rows of punctures.

Length 2.8 mm.

Distribution: Sri Lanka.

Holotype: Udawattekela Sanctuary, Kandy, 9. xi. 1973, A. OTAKE. Paratypes: same locality as the holotype, 13 exs., 17. x. 1973, 14 exs., 9. xi. 1973, 7 exs., 21. iii. 1974, 4 exs., 21. ii. 1974, 2 exs., 25. vii. 1973, 1 ex., 23. i. 1974, 1 ex., 3. iii. 1975, 1 ex., 19. ix. 1973, 1 ex., 4. i. 1974.

*Trylaea flavipennis* (MOTSCHULSKY, 1866)

Bull. Soc. Nat. Mosc., 39: 422 (Ceylon) (*Hyphophila*).

*variabilis* JACOBY, 1887, Proc. Zool. Soc. London, 1887: 99 (Ceylon).

Material examined: Udawattekela Sanctuary, Kandy, 2 exs., 3. iii. 1975, 1 ex., 17. v. 1975.

Distribution: Sri Lanka.

The redescription of type series was given by OGLOBLIN (1930).

*Hespera lomasa* MAULIK, 1926 Fig. 7g

Fauna India, Chrys. & Halt.: 142 (Ceylon).

Material examined: Hills South of the Lake Kandy, 1 ex., 18. v. 1975.

Distribution: India, Sri Lanka, Burma, Thailand, Laos, Vietnam, China, Taiwan, Ryukyu Is.

*Clitea ceylonica* CHEN, 1936

Sinensia, 7 (1): 84 (Ceylon).

Material examined: Udawattekela Sanctuary, Kandy, 2 exs., 17. v. 1975, 1 ex., 9. xi. 1973, 1 ex., 6. ix. 1973, 1 ex., 23. i. 1974, 1 ex., 21. iii. 1974, 1 ex., 19. ix. 1973.

Distribution: Sri Lanka.

*Microcrepis singhala* (CHEN, 1936)

Sinensia, 7 (1): 82 (Ceylon) (*Manobia*?).

Material examined: Udawattekela Sanctuary, Kandy, 1 ex., 17. v. 1975; Hills South of the Lake Kandy, 1 ex., 6. iii. 1975.

Distribution: Sri Lanka.

*Ogloblinia nigripennis* (MOTSCHULSKY, 1866)

Bull. Soc. Nat. Mosc., 39: 418 (Ceylon) (*Crepidodera*).

Material examined: Udawattekela Sanctuary, Kandy, 2 exs., 21. iii. 1974, 1 ex., 19. ix. 1973, 2 exs., 21. ii. 1974, 1 ex., 4. i. 1974, 1 ex., 6. ix. 1973; Hills South of the Lake Kandy, 1 ex., 19. iii. 1974, 1 ex., 18. v. 1975, 1 ex., 8. i. 1974.

Distribution: Sri Lanka, Burma (Tenasserim).

The redescription of type series was given by OGLOBLIN (1930).

*Hyphasis dhusara* (MAULIK, 1926) Fig. 7h

Fauna India, Chrys. & Halt.: 167 (Ceylon) (*Hyphasoma*).

Material examined: Udawattekela Sanctuary, Kandy, 3 exs., 17. v. 1975, 1 ex., 19. ix. 1973, 1 ex., 25. vii. 1973, 1 ex., 30. iv. 1975, 1 ex., 9. xi. 1973, 1 ex., 21. ii. 1974, 1 ex., 3. iii. 1975, 1 ex., 1. iv. 1975.

Distribution: Sri Lanka.

*Hyphasis sita* (MAULIK, 1926) Fig. 7i

Fauna India, Chrys. & Halt.: 166 (Ceylon) (*Hyphasoma*).

Material examined: Udawattekela Sanctuary, Kandy, 1 ex., 4. i. 1974, 1 ex., 9. viii. 1973; Rajapihilla Mawatha, Kandy, 1 ex., 19. iii. 1974.

Distribution: Sri Lanka.

*Hyphasis lankana* sp. nov. Fig. 1f

Generally yellowish brown, elytron with ill-defined pitchy marking which is covering basal, apical and interior half of areas, in pale colored specimens pitchy marking covering only basal area.

Head with vertex smooth, shining, nearly impunctate, except for a pair of large foveae situated near interior margin of eyes; inter-ocular space narrower, nearly as wide as transverse diameter of single oculus; frontal tubercles convex, subquadrate, contiguous, separated from vertex by a straight, transverse, distinct impression, surface shagreened, impunctate. Antenna slender, filiform, nearly  $2/3$  as long as length of body; first segment long, robust, club-shaped; second slender than first, nearly half as long as first; third slender, twice as long as second; fourth slightly longer than third; fifth subequal to fourth in length and shape; sixth slightly shorter than fifth in length; seventh slightly shorter than sixth in length and seventh to tenth subequal to each other in length and shape; eleventh subequal to tenth in length but its apex pointed. Pronotum transverse, almost twice as wide as long; anterior margin rounded posteriorly, lateral margin distinctly rounded, widest slightly before basal margin and gradually narrowed anteriorly, posterior margin widely rounded posteriorly; anterior and posterior corners each with a seta-bearing pore; dorsal surface impressed by very minute punctures. Scutellum subtriangular, its apex rounded, surface smooth, shining, impunctate. Elytron convex, lateral margin rounded, surface closely impressed by strong punctures.

Length 4.0–4.5 mm.

Distribution: Sri Lanka.

Holotype: Udawattekela Sanctuary, Kandy, 9. xi. 1973, A. OTAKE. Paratypes: Same locality as the holotype,

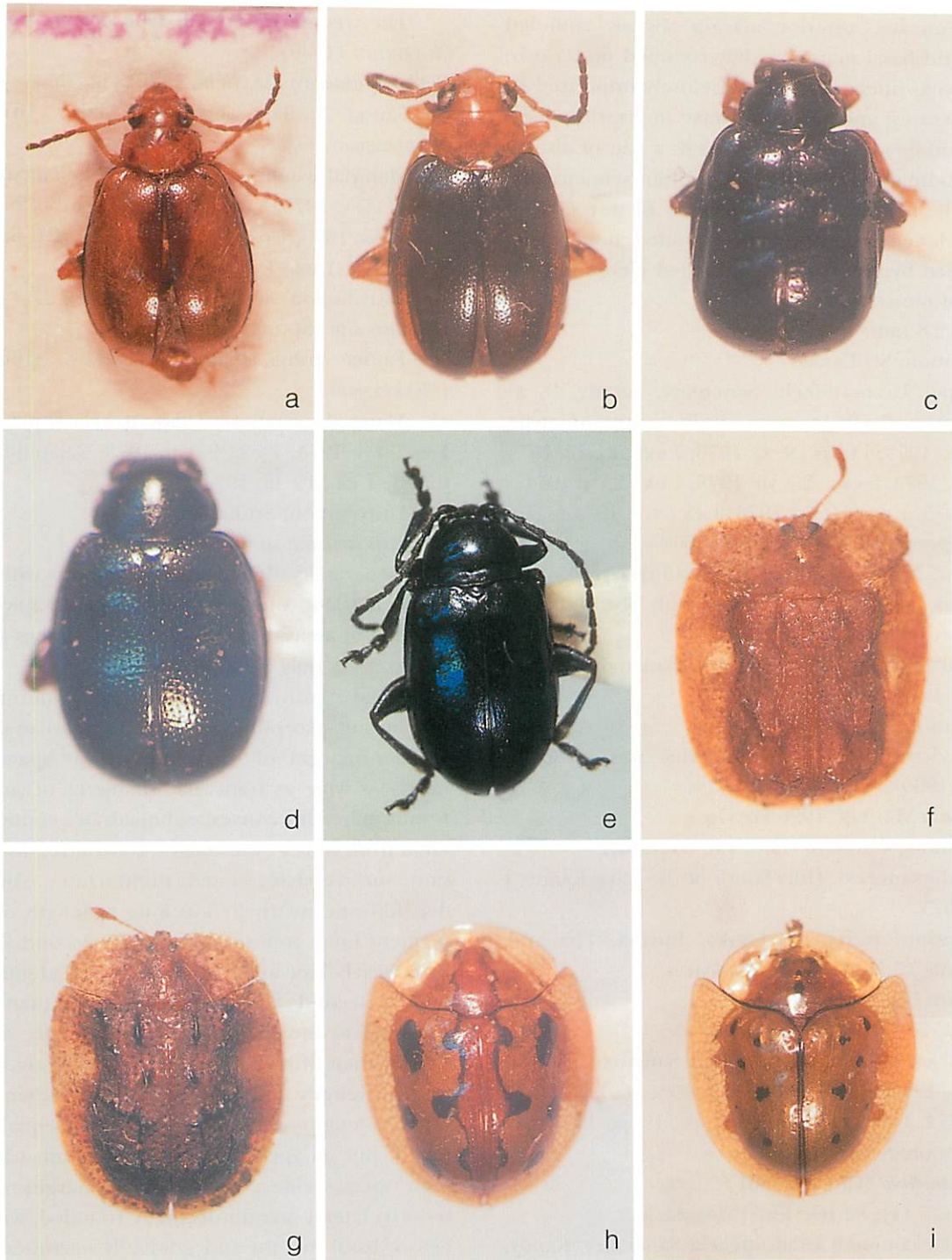


Fig. 8. a, *Elytropachys tropica* (MOTSCHULSKY); b, *Elytropachys tropica* (MOTSCHULSKY var.); c, *Elytropachys latissima* (MOTSCHULSKY); d, *Elytropachys viridescens* MOTSCHULSKY; e, *Altica cyanea* (WEBER); f, *Notosacantha horrifica* (BOHEMAN); g, *Notosacantha bifenestrella* (BOHEMAN); h, *Chiridopsis ornata* (FABRICIUS); i, *Chiridopsis tredecimnotata* (BOHEMAN).

1 ex., 17. v. 1975, 1 ex., 9. xi. 1973, A. OTAKE.

This new species resembles *Hyphasis sita* MAULIK, 1926, from Ceylon, but differs in having the basal and the sutural margins not stained with blackish brown and the body shape more rounded.

*Elytropachys tropica* (MOTSCHULSKY, 1866) Fig. 8a-b

Bull. Soc. Nat. Mosc., 39: 420 (Ceylon) (*Podagrica*).

*sutura nigra* MOTRSCHULSKY, 1866, Bull. Soc. Nat. Mosc., 39: 416 (Ceylon) (*Teinodactylal*).

Material examined: Udawattekela Sanctuary, Kandy, 1 ex., 25. vii. 1973, 4 exs., 17. v. 1975, 1 ex., 1. v. 1975, 4 exs., 4. i. 1974, 3 exs., 6. ix. 1973, 2 exs., 21. ii. 1974, 3 exs., 23. i. 1974, 4 exs., 3. iii. 1975; 4 exs., 30. iv. 1975, 2 exs., 19. ix. 1973, 1 ex., 23. i. 1974, 1 ex., 1. iv. 1975, 1 ex.,

21. ii. 1974, 1 ex., 9. i. 1973, 1 ex., 6. ix. 1973, 2 exs., 6. ix. 1973; Hills South of the Lake Kandy, 2 exs., 2. v. 1975, 1 ex., 6. iii. 1975, 2 exs., 4. iv. 1975, 2 exs., 6. iii. 1975, 2 exs., 4. iv. 1975, 1 ex., 18. v. 1975, 1 ex., 8. i. 1974, 1 ex., 18. ii. 1974.

Distribution: Sri Lanka.

The redescription of type series was given by OGLOBLIN (1930).

*Elytropachys latissima* (MOTSCHULSKY, 1858) Fig. 8c

Etud. Ent., 7: 106 (Ceylon) (*Aphthona*).

Material examined: Udawattekela Sanctuary, Kandy, 5 exs., 21. ii. 1974, 3 exs., 23. i. 1974, 2 ex s., 4. i. 1974, 2 exs., 21. iii. 1974, 1 ex., 9. xi. 1973, 1 ex., 30. iv. 1975; Hills South of the Lake Kandy, 1 ex., 6. iii. 1975.

Distribution: Sri Lanka.

The redescription of type series was given by OGLOBLIN (1930).

*Elytropachys viridescens* MOTSCHULSKY, 1866 Fig. 8d

Bull. Soc. Nat. Mosc., 39: 419 (Ceylon)

Material examined: Udawattekela Sanctuary, Kandy, 1 ex., 9. viii. 1973, 1 ex., 3. iii. 1975; Hills South of the Lake Kandy, 2 exs., 18. v. 1975, 4 exs., 2. v. 1975, 1 ex., 6. iii. 1975, 1 ex., 18. v. 1975, 1 ex., 18. ii. 1974.

Distribution: Sri Lanka.

The redescription of type series was given by OGLOBLIN (1930).

*Altica cyanea* (WEBER, 1801) Fig. 8e

Observ. Ent., 1: 67 (Sumatra) (*Galleruca*).

Material examined: Kalgomura, Kandy Distr., 2 exs., 1. i. 1974, 2 exs., 29. i. 1974, 1 ex., 27. ii. 1975; Peradeniya, Kandy Distr., 2 exs., 4. ii. 1974, 1 ex., 15. ii. 1974, 1 ex., 20. ii. 1974, 1 ex., 14. iii. 1974.

Distribution: Afghanistan, India, Sri Lanka, Nepal, Burma, Thailand, Laos, Vietnam, China, Taiwan, Malaya, Sunda Is., Ryukyu Is., Japan, Philippines, New Guinea, Australia.

#### Subfamily Cassidinae

*Notosacantha horrifica* (BOHEMAN, 1862) Fig. 8f

Mon Cassid., 4: 8 (Ceylon) (*Hoplionota*).

Material examined: Udawattekela Sanctuary, Kandy, 1 ex., 30. iv. 1975; Kandy, 1 ex., 7. iii. 1975.

Distribution: India, Sri Lanka.

*Notosacantha bifenestrella* (BOHEMAN, 1862) Fig. 8g

Mon Cassid., 4: 8 (Ceylon) (*Hoplionota*).

Material examined: Udawattekela Sanctuary, Kandy, 1 ex., 21. iii. 1974.

Distribution: India, Sri Lanka.

*Chiridopsis ornata* (FABRICIUS, 1798) Fig. 8h

Syst. Ent. Suppl.: 81 (Ceylon) (*Cassida*).

Material examined: Udawattekela Sanctuary, Kandy,

1 ex., 1. iv. 1975, 1 ex., 17. v. 1975, 1 ex., 9. xi. 1973, 1 ex., 30. iv. 1975; Hills South of the Lake Kandy, 1 ex., 19. iii. 1974; Naula, Mataus District, 1 ex., 30. viii. 1973.

Distribution: Sri Lanka.

*Chiridopsis tredecimnotata* (BOHEMAN, 1885) Fig. 8i

Mon. Cassid., 3: 128 (Ceylon) (*Coptocycla*).

Material examined: Udawattekela Sanctuary, Kandy, 1 ex., 30. iv. 1975.

Distribution: Sri Lanka.

*Thlaspidomorpha balyi* (BOHEMAN, 1885) Fig. 9a

Mon. Cassid., 3: 403 (Ceylon) (*Coptocycla*).

Material examined: Hills South of the Lake Kandy, 1 ex., 18. v. 1975, 1 ex., 19. iii. 1974.

Distribution: Sri Lanka.

*Aspidomorpha furcata* (THUNBERG, 1789) Fig. 9b

Nouv. Ins. Spec., 5: 87 (Siam) (*Cassida*).

Material examined: Udawattekela Sanctuary, Kandy, 1 ex., 19. ix. 1973.

Distribution: India, Sri Lanka, Burma, Thailand, Cambodia, Laos, Vietnam, S. China, Hainan, Taiwan, Japan, Koarea, Sibeira, Malaya, Sunda Is.

*Cassida circumdata* HERBST, 1790

Natursyst. Kafer, 8: 268 (E. Indies).

Material examined: Kandy, 1 ex., 22. i. 1974.

Distribution: India, Sri Lanka, Thailand, Laos, Vietnam, S. China, Hainan, Taiwan, S. Kyushu, Ryukyu Is., Java, Celebes, Philippines.

*Cassida nuwara* MAULIK, 1919 Fig. 9c

Fauna India, Hisp. & Cass.: 406 (Ceylon).

Material examined: Mt. Pidurutalagala, Nuwaraeliya, 1 ex., 13. i. 1974, 1 ex., 25. iv. 1974; Horton Plains, Nuwaraeliya, 2 exs., 14. ii. 1974.

Distribution: Sri Lanka.

#### Subfamily Hispinae

*Oncocephala quadrilobata* GUERIN, 1844 Fig. 9d

Icon. Regne Anim., Ins.: 281 (Pondicherry).

Material examined: Udawattekela Sanctuary, Kandy, 1 ex., 30. iv. 1975, 1 ex., 21. iii. 1974, 2 exs., 21. ii. 1974.

Distribution: India, Sri Lanka, Burma, Andaman Is.

*Callispa nigricornis* BALY, 1858 Fig. 9e

Cat. Hisp. Brit. Mus.: 8 (Ceylon).

Material examined: Udawattekela Sanctuary, Kandy, 2 exs., 25. vii. 1973, 2 exs., 1. iv. 1975, 2 exs., 21. iii. 1974, 2 exs., 9. viii. 1973, 1 ex., 17. v. 1975, 1 ex., 3. iii. 1975, 1 ex., 30. iv. 1975, 1 ex., 4. iv. 1975; Hills South of the Lake Kandy, 2 exs., 18. ii. 1974, 1 ex., 9. iii. 1975.

Distribution: Sri Lanka.

*Callispa brevipes* MAULIK, 1919 Fig. 9f

Fauna India, Hisp. & Cassid.: 66 (Ceylon).

Material examined: Udawattekela Sanctuary, Kandy,



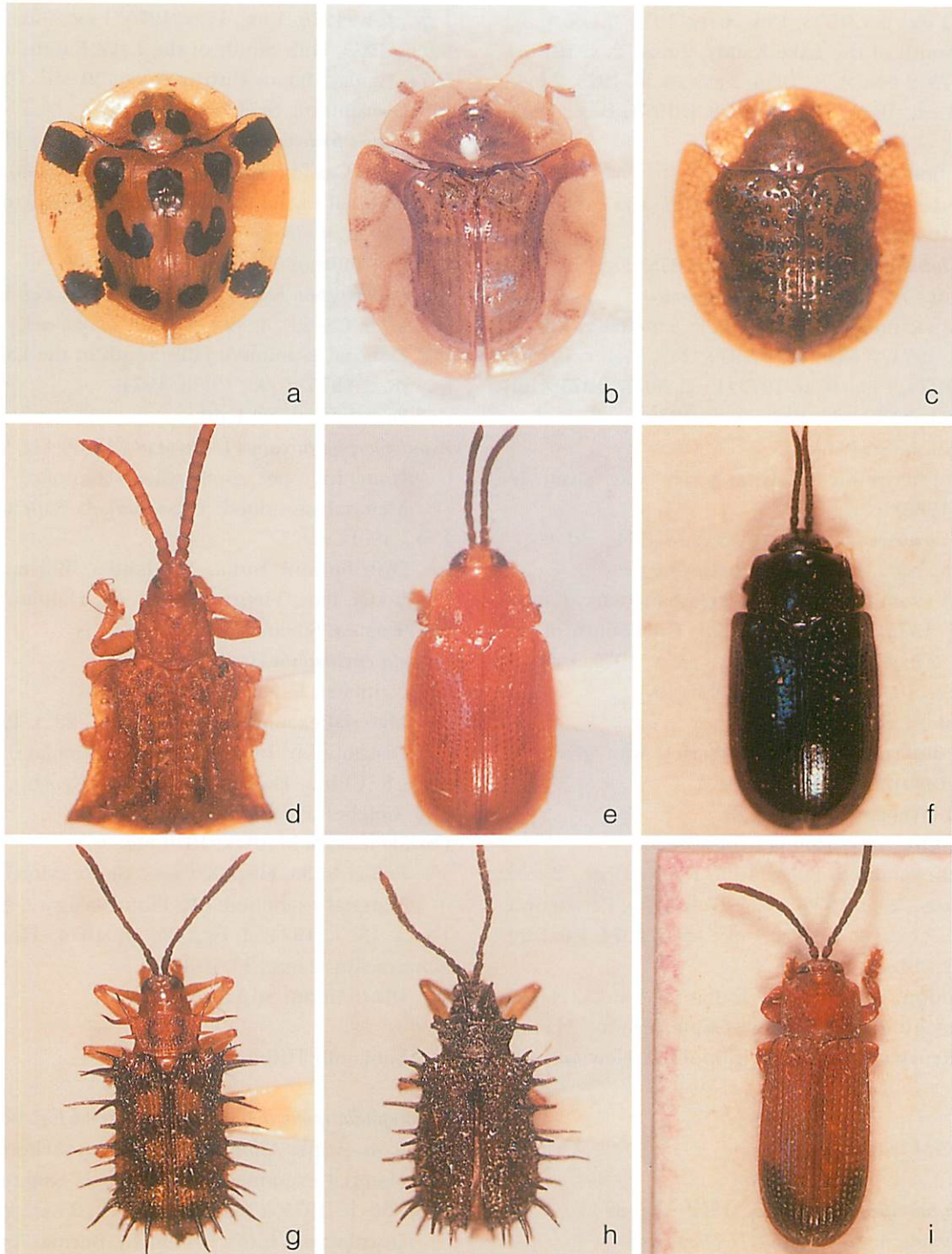


Fig. 9. a, *Thlaspidomorpha balyi* (BOHEMAN); b, *Aspidomorph furcata* (THUNBERG); c, *Cassida nuwara* MAULIK; d, *Oncocephala quadrilobata* (GUERIN); e, *Callispa nigricornis* (BALY); f, *Callispa brevipes* MAULIK; g, *Dactylispa albopilosa* (GESTRO); h, *Dactylispa feae* (GESTRO); i, *Pistosia palmarum* (GESTRO).

1 ex., 9. xi. 1973, 1 ex., 17. v. 1975.

Distribution: Sri Lanka.

*Platypria echidna* (GUMERIN-MENEVILLE, 1840)

Rev. Zool., Paris: 139 (Visapour) (*Hispa*).

Material examined: Udawattekela Sanctuary, Kandy,

1 ex., 22. v. 1973.

Distribution: India, Sri Lanka, Burma, Thailand, Viet-

nam.

*Platypria hystrix* (FABRICIUS, 1798)

Ent. Syst. Suppl.: 116 (Indiae) (*Hispa*).

Material examined: Near Aluta Oya, Polonnaruwa, 1 ex., 13. iv. 1975.

Distribution: India, Sri Lanka, Nepal, Burma, Thailand, Laos, Vietnam, China, Sumatra, Java, Celebes.



***Diclidispa armigera* (OLIVIER, 1808)**

Entomolog., 6: 763 (Bengale) (*Hispa*).

Material examined: Kalgomuwa, Kandy Distr., 1 ex., 29. i. 1974, 1 ex., 27. ii. 1975; Kurunegala, 1 ex., 26. vi. 1973.

Distribution: India, Sri Lanka, Nepal, Burma, Thailand, Laos, Vietnam, China, Hainan, Taiwan, Malaya, Sumatra, Java.

This species is here recorded for the first time from Sri Lanka.

***Dactylispa albopilosa* (GESTRO, 1890) Fig. 9g**

Ann. Mus. Civ. Genova, ser. 2, 6 (39): 181 (Birma) (*Hispa*).

*maculata* GESTRO, 1890, Ann. Mus. Civ. Genova, 30: 252 (Burma) (*Hispa*).

Material examined: Udawattekela Sanctuary, Kandy, 1 ex., 1. iv. 1975; Hills South of the Lake Kandy, 1 ex., 6. viii. 1975, 1 ex., 8. i. 1974.

Distribution: India, Sri Lanka, Burma, Thailand, Laos, Vietnam.

This species is here recorded for the first time from Sri Lanka.

***Dactylispa feae* (GESTRO, 1888) Fig. 9h**

Ann. Mus. Civ. Genova, ser. 26: 183 (Birma) (*Hispa*).

*filiola* WEISE, Dtsche Ent. Zeit., 1897: 135 (S. India).

Material examined: Hills South of the Lake Kandy, 1 ex., 4. iv. 1975, 1 ex., 11. iii. 1974.

Distribution: India, Sri Lanka, Burma, Thailand, Cambodia, Laos, Vietnam, Malaya, Sumatra, Java.

***Dactylispa lankaja* MAULIK, 1919**

Fauna India, Hisp. & Cass.: 186 (Ceylon).

Material examined: Mt. Pindurotalagana, Nuwaraeliya, 1 ex., 25. iv. 1975.

Distribution: Sri Lanka.

***Pistisia palmarum* (GESTRO, 1912) Fig. 9i**

Ann. Mus. Civ. Genova, 46: 43 (Singapore) (*Wallacea*).

Material examined: Udawattekela Sanctuary, Kandy, 1 ex., 4. i. 1974.

Distribution: Sri Lanka, Singapore, Malaya, Sumatra, Java, Philippines.

This species is here recorded for the first time from

Sri Lanka.

**SELECTED LITERATURES**

- ANAD, R. K. & COX, M. L., 1986. Taxonomic revision of the genus *Aulacophora* CHEVR. I. species with yellow elytra (Coleoptera, Chrysomelidae, Galerucinae). *Ent. Abh. Staatl. Mus. Dresden*, **50** (4): 81–91.
- CHEN, S. H., 1936. Notes on some Flea-Beetles from Tropical Asia (II). *Sinensia*, **7** (1): 80–88.
- DOEBERL, M., 1996. Beitrag zur Kenntnis der Alticinae der Orientalischen Region (Coleoptera, Chrysomelidae, Alticinae). *Ent. Blätt.*, **92**: 110–115.
- GRUEV, B., 1985. Leaf-beetles collected by P. BERON and S. Andreev from the National Museum (Natural History), Sofia in India, Sri Lanka, Nepal, Burma and Thailand in 1981 and 1984 (Coleoptera, Chrysomelidae). *Ent. Rev. Japan*, **40** (1): 35–47.
- JACOBY, M., 1887. Descriptions of the Phytophagous Coleoptera of Ceylon, obtained by Mr. George LEWIS during the year 1881–1882. *Proc. Zool. Soc. London*, **1887**: 65–119.
- JACOBY, M., 1908. *Fauna of British India, including Ceylon and Burma. Coleoptera, Chrysomelidae, Chrysomelidae*, Vol. 1. London, Taylor and Francis. 534pp.
- MAULIK, S., 1916. *Fauna of British India, including Ceylon and Burma. Coleoptera, Chrysomelidae (Hispinae and Cassidinae)*. London, Taylor and Francis. 439pp.
- MAULIK, S., 1926. *Fauna of British India, including Ceylon and Burma. Coleoptera, Chrysomelidae (Chrysomelinae and Halticinae)*. London, Taylor and Francis. 442pp.
- MAULIK, S., 1936. *Fauna of British India, including Ceylon and Burma. Coleoptera, Chrysomelidae (Galerucinae)*. London, Taylor and Francis. 648pp.
- MEDVEDEV, L. N., 2001. Chrysomelidae of southern Asia (Coleoptera). *Ent. Basiliensia*, **23**: 159–191.
- MOHAMEDSAID, M. S., 1997. The galerucine beetles of Sri Lanka, with descriptions of two new species (Coleoptera: Chrysomelidae). *Stobaeana*, Lund, **9**: 1–7.
- MOTSCHULSKY, V., 1866. Essai d'un catalogue des insectes de l'île de Ceylan. *Bull. Soc. Nat. Moscou*, **39** (1): 393–446.
- OGLOBLIN, D., 1930. De quelques especes de Halticinae de la collection de V. MOTSCHULSKY. *Eos, Revista Esp. de Ent.*, **6** (1): 83–112, 1 pl.
- SCHERER, G., 1969. Die Alticinae des indischen Subkontinentes (Coleoptera, Chrysomelidae, Alticinae). *Pacif. Ins. Mon.*, **22**: 1–251.
- SCHERER, G., 1971. Das Genus *Livolia* JACOBY und seine umstrittene Stellung in System. *Ent. Arb. Mus. Frey*, **22**: 1–37.
- SCHERER, G., 1974. Review of North American species of *Orthaltica* with new generic synonymy (Coleoptera: Chrysomelidae, Alticinae). *Coleop. Bull.*, **28**: 65–72.