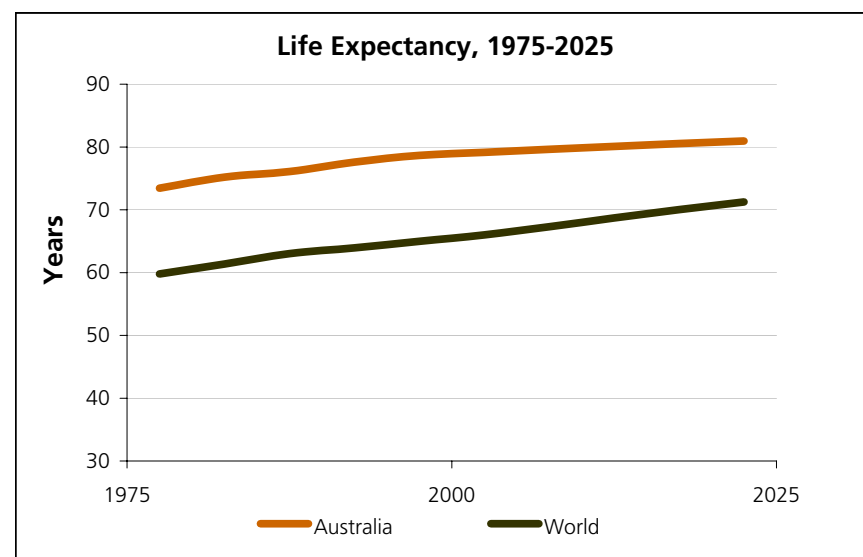
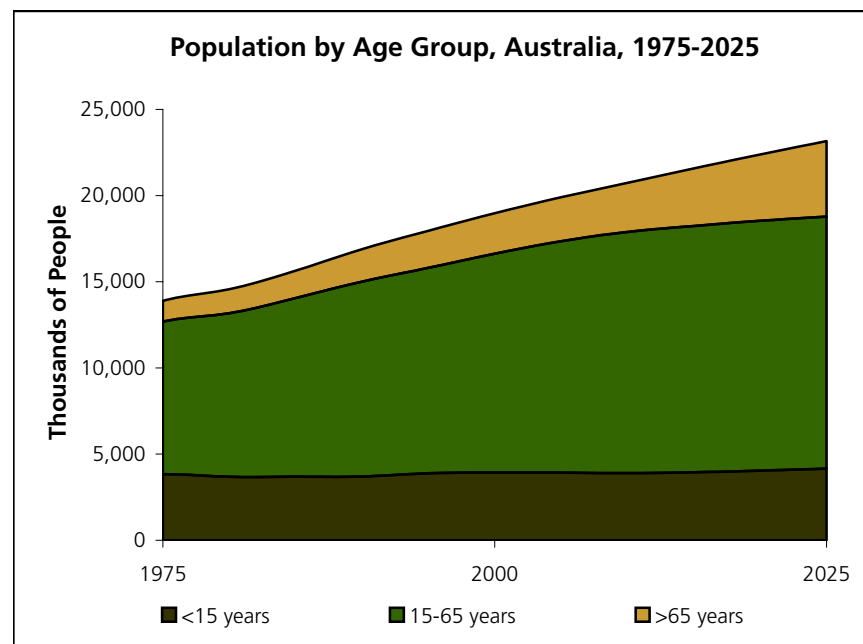


Demographic and Health Indicators

	Australia	Oceania	World
Total Population (in thousands of people)			
1950	8,219	12,607	2,519,495
2002	19,536	31,281	6,211,082
2025 (projected)	23,523	40,020	7,936,741
Population Density (people per square km), 2000:	2.5	3.5	45.1
Average Annual Population Growth Rate, 1980-2000			
Total	1.3%	1.5%	1.6%
In rural areas	1.7%	1.6%	0.9%
In urban areas	1.2%	1.4%	2.4%
Percentage of Population:			
Under age 15, 2002	20%	24%	29%
Over age 65, 2002	12%	10%	7%
Living in Urban Areas, 2000	85%	70%	47%
Average Total Fertility Rate {a}			
1975-1980	2.1	2.8	3.9
2000-2005	1.8	2.3	2.7
Infant Mortality Rate {b}, 2000-2005	5	24	55
Under-Five Mortality Rate {b}, 2000	6	X	83
Life Expectancy at birth (years), 2000-05			
Female	82.0	77.3	68.1
Male	76.4	72.4	63.9
Births Attended by Trained Personnel, 1994-2000 {c}	100%	X	57%
Adults and Children Infected with HIV/AIDS, 2001 (number)	12,000	30,500	40,000,000
Percent of Adults Ages 15-49 infected with HIV or AIDS, 2001	0.1%	0.2%	1.2%
Number of Children Orphaned by AIDS since the beginning of epidemic, 2001	X	X	14,000,000
Safe Water and Sanitation {c}			
Access to Improved Sanitation, 2000			
Urban	100%	97%	85%
Rural	100%	92%	40%



View more Country Profiles on-line at <http://earthtrends.wri.org>

	Australia	Oceania	World
Safe Water and Sanitation {c}			
Access to an Improved Water Source, 2000			
Urban	100%	96%	95%
Rural	100%	85%	71%
School Enrollment and Literacy {c}			
Net Primary School Enrollment, both sexes			
1980	X	X	X
1997-1999 {c}	100%	X	X
Net Secondary School Enrollment, 1997-1999 {c}			
Female	96%	X	X
Male	96%	X	X
Gross Tertiary School Enrollment, 1996-99 {c}	80%	X	X
Adult Literacy Rate, 2002			
Female	X	98%	75%
Male	X	99%	86%
Youth Literacy Rate (ages 15-24), both sexes			
1980	X	99%	80%
2002	X	100%	87%

Literacy Rate for Adults over the age of 15, Australia, 1980-2000

Other Resources:

Country Profiles of the Food and Agriculture Organization of the United Nations, Economic Situation:

<http://www.fao.org/countryprofiles/index.asp?subj=3&iso3=AUS>

Footnotes:

- a. Total fertility rate is an estimate of the number of children an average woman would have if current age-specific fertility rates remain constant during her reproductive years.
- b. In deaths per 1,000 live births. Infant mortality rate refers to children under one year of age.
- c. Data are for the most recent year within the range specified.

View more Country Profiles on-line at <http://earthtrends.wri.org>



Gross Domestic Product, 2000

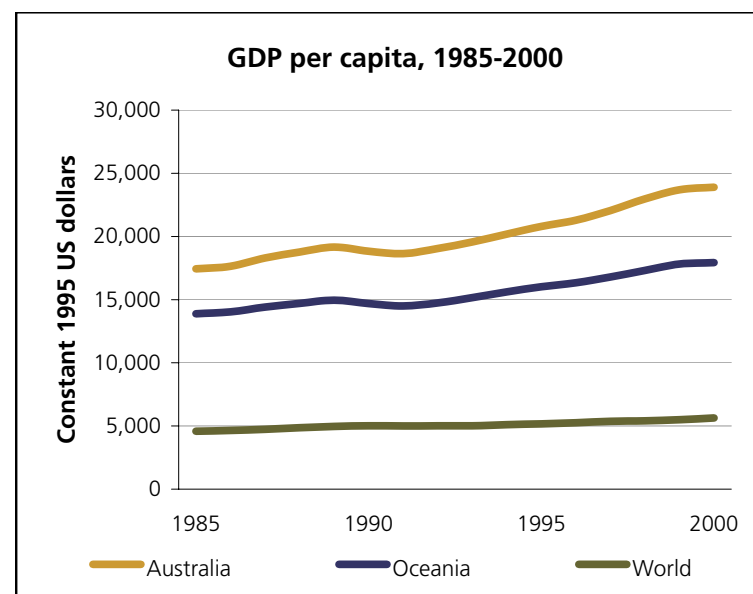
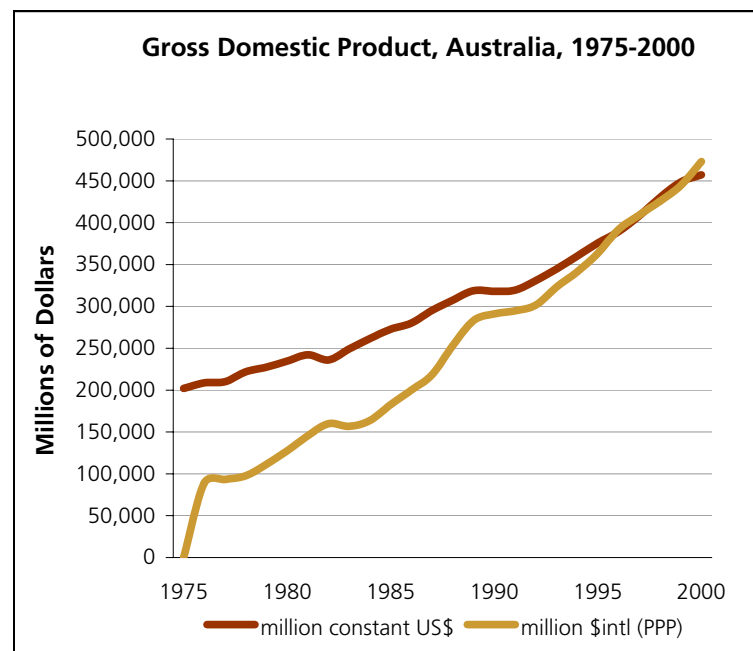
	Australia	Oceania	World
GDP in million constant 1995 US dollars	457,255	540,969	34,109,900
GDP PPP (million current international dollars) {a}	492,850	597,494	44,913,910
Gross National Income (PPP, in million current international dollars), 2000 {a}	478,999	577,141	44,458,520
GDP per capita, 2000			
in 1995 US dollars	23,893	17,934	5,632
in current international dollars	25,753	20,057	7,416
Average annual growth in GDP, 1991-2000			
Total	4%	3%	3%
Per capita	2%	2%	1%
Percent of GDP earned by:			
Agriculture, 2000	X	X	X
Industry, 2000	X	X	X
Services, 2000	X	X	X

International Trade

	Australia	Oceania	World
Trade in Goods and Services (million current \$US)			
Imports, 2000	X	X	X
Exports, 2000	X	X	X
Exports as a percent of GDP, 2000	X	X	X
Balance of Trade, 2000 (million current \$US)	X	X	X

Official Development Assistance (ODA) and Financial Flows

	Australia	Oceania	World
ODA in million US dollars, 1998-2000 {b}	X	2,035	59,073
ODA per capita in US dollars, 1998-2000 {b}	X	8	10
Current Account Balance (million \$US), 2000	-15,316	X	X
Total external debt, million \$US, 1998-2000 {b}	X	555,977	X
Debt service as a % of export earnings, 1995-97 {b}	X	X	X
Foreign Direct Investment, net inflows (million current \$US), 2000	11,528	14,898	X
International Tourism Receipts, 1995-1997 (million \$US)	8,503	X	X



View more Country Profiles on-line at <http://earthtrends.wri.org>

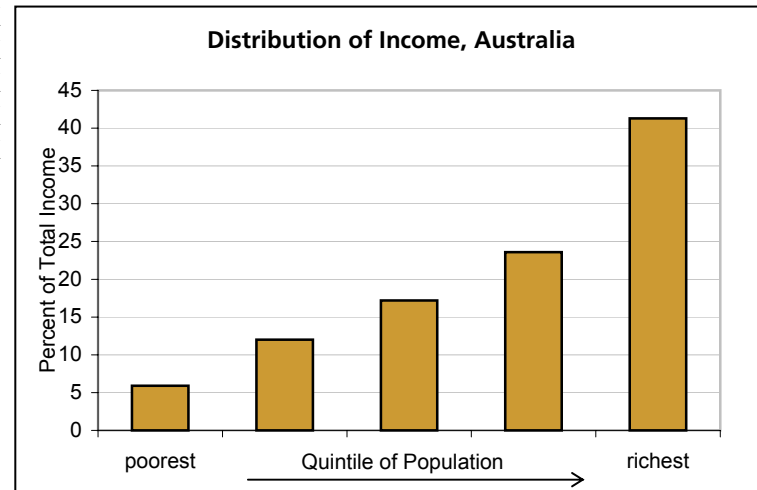
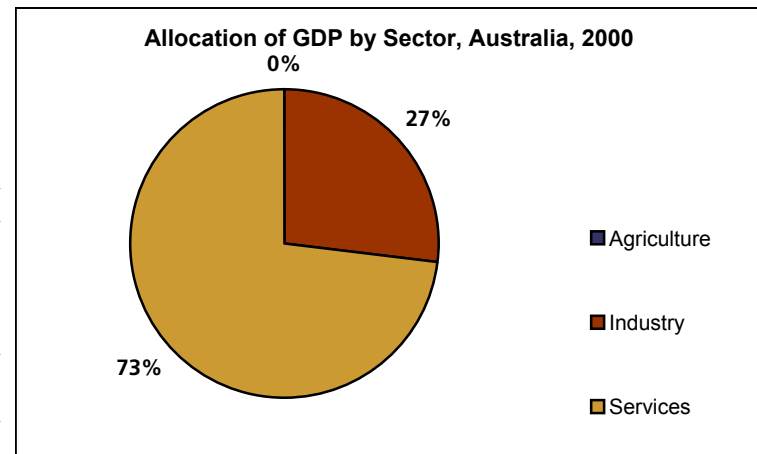
Economic Indicators -- Australia

	Australia	Oceania	World
National Savings (as a percent of Gross National Income)			
Gross National Savings, 2000	19%	19%	23%
Net National Savings, 2000	3%	3%	X
Adjusted Net Savings, 2000	4%	5%	X
Income Distribution (years vary)			
Gini coefficient (0=perfect equality; 100=perfect inequality)	35	X	X
Percent of total income earned by the richest 20% of the population:	41.3%	X	X
Percent of total income earned by the poorest 20% of the population:	5.9%	X	X
National Poverty Rate	X	X	X
Poverty Rate, Urban Population	X	X	X
Percent of population living on less than \$1 a day	X	X	X
Percent of population living on less than \$2 a day	X	X	X

Other Resources:

Country Profiles of the Food and Agriculture Organization
of the United Nations, Economic Situation:

<http://www.fao.org/fi/fcp/en/AUS/profile.htm>



a. Data are in international dollars, adjusted for purchasing power parity (PPP). PPP rates provide a standard measure allowing comparison of real price levels between countries. b. Data are averaged for the range of years listed.

View more Country Profiles on-line at <http://earthtrends.wri.org>

Carbon Dioxide (CO₂) Emissions {a} (in thousand metric tons of CO₂)

	Australia	Oceania	World
Total Emissions, 1998	331,482	371,629	24,215,376
Percent change since 1990	25%	25%	8%
Emissions as a percent of global CO ₂ production	1.4%	1.5%	
Emissions in 1998 from:			
solid fuels	200,117	205,451	8,654,368
liquid fuels	87,493	112,243	10,160,272
gaseous fuels	40,634	50,120	4,470,080
gas flaring	0	0	172,208
cement manufacturing	3,239	3,815	758,448
Per capita CO ₂ emissions, 1998 (thousand metric tons of CO ₂)	17.9	12.7	4.1
Percent change since 1990	14%	11%	-2%
CO ₂ emissions (in metric tons) per million dollars Gross Domestic Product {b}, 1998	808	X	773
Percent change since 1990	-7%	X	-10%
Cumulative CO ₂ emissions, 1900-1999 (in billion metric tons)	10,026	11,384	933,686

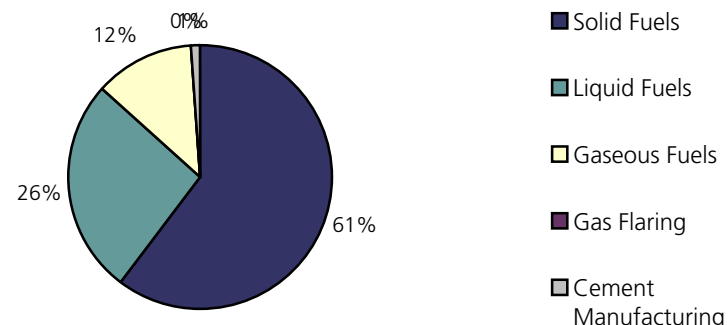
CO₂ Emissions by Sector, 1999 {c} (in million metric tons of CO₂)

Public electricity, heat production, and autoproducers	172	X	8,693
Other Energy Industries	18	X	1,205
Manufacturing Industries and Construction	50	X	4,337
Transportation	72	X	5,505
Residential	7	X	1,802
Other Sectors {d}	17	X	5,640
Total Emissions All Sectors:	336	X	27,180

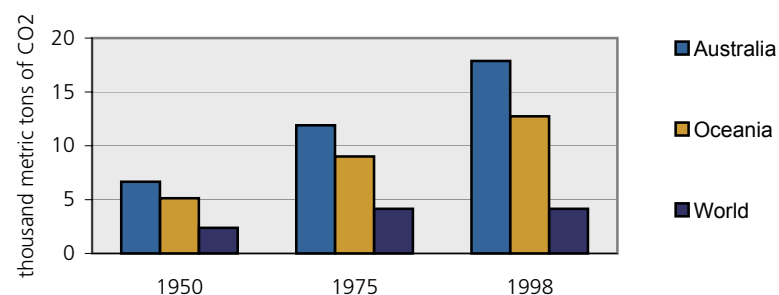
CO₂ Intensity, 1999

Emissions per total energy consumption (metric tons CO ₂ per terajoule energy)	71	67	56
Emissions per Gross Domestic Product {e} (metric tons of CO ₂ /million \$PPP)	687 X		582

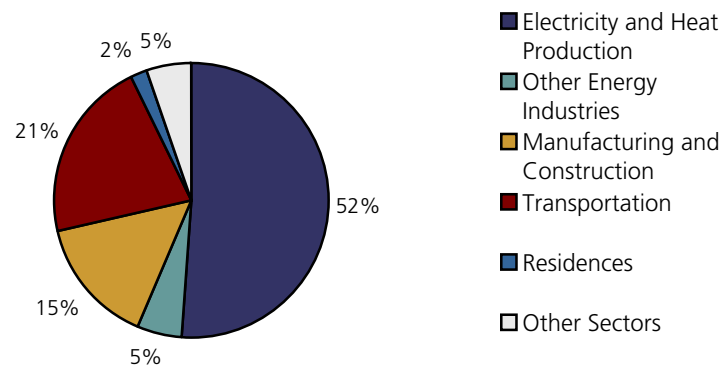
CO₂ Emissions by Source, Australia, 1998



Per Capita CO₂ Emissions: 1950, 1975 and 1998



CO₂ Emissions by Sector, Australia, 1999



View more Country Profiles on-line at <http://earthtrends.wri.org>

Atmosphere and Climate-- Australia

	Australia	Oceania	World
Non-CO2 Air Pollution, thousand metric tons			
Sulfur dioxide emissions, 1995	1,574	1,696	141,875
Nitrogen oxide emissions, 1995	1,887	2,167	99,271
Carbon monoxide emissions, 1995	15,472	18,487	852,415
Non-methane VOC emissions {f}, 1995	2,391	2,800	159,634

Multilateral Agreements Status as of September 2002

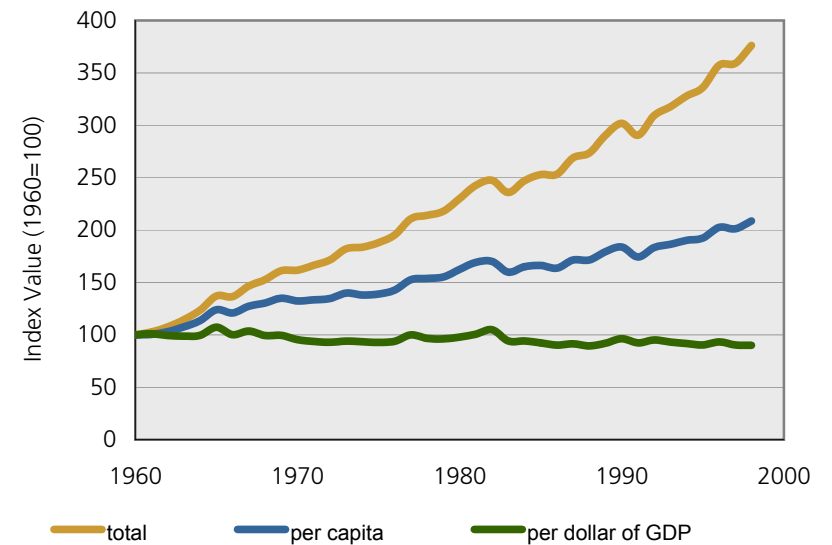
Data show the year each country ratified the agreement, unless labeled as "signed only".

Kyoto Protocol	1998 (signed only)
United Nations Framework Convention on Climate Change (UNFCCC)	1992
Vienna Convention	1987

Other Resources:

Sustainable Development Country Profile of the Food and Agriculture Organization of the United Nations:
<http://www.fao.org/countryprofiles/index.asp?subj=2&iso3=>

CO2 emissions: Relative Trends, Australia, 1960-1998



Footnotes:

Some footnotes are not incorporated here. Please refer to the Data Tables section of EarthTrends for a full listing.

- Source: Carbon Dioxide Information Analysis Center (CDIAC).
- Constant US dollars.
- Source: International Energy Agency (IEA).
- Includes the commercial sector, agriculture, the public service sector, and international bunkers
- GDP is in 1995 international dollars, adjusted for Purchasing Power Parity.
- VOC: Volatile Organic Compounds.

View more Country Profiles on-line at <http://earthtrends.wri.org>



Energy Production and Consumption

(in thousand metric tons of oil equivalent) {a}

	Australia	Oceania	World
Total energy production, 2000	232,552	247,931	10,077,984
% change since 1980	170%	171%	37%
Energy imports, 1997	24,483	30,122	9,521,506
Energy exports, 1997	119,382	122,289	3,419,104
Total energy consumption {b}, 1999	107,930	X	9,702,786
Electricity consumption, 1999	14,492	X	1,040,770
Energy consumption per capita, 1997	5.54	4.04	1.64
% change since 1990	7%	5%	0%
Energy consumption per GDP {c}, 1999:	231	235	244
% change since 1990	-12%	-10%	-13%

Energy Consumption by Source, 1999 (in thousand metric tons oil equivalent)

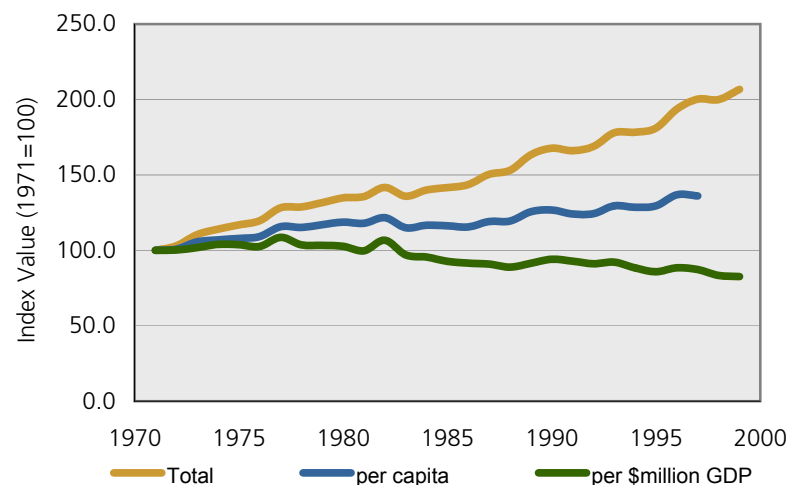
	Australia	Oceania	World
Total Fossil Fuels	101,140	X	7,689,047
Coal and coal products	47,364	X	2,278,524
Crude oil and natural gas liquids	36,291	X	3,563,084
Natural gas	18,207	X	2,012,559
Nuclear	0	X	661,901
Hydroelectric	1,434	X	222,223
Renewables, excluding hydroelectric:	5,177	X	1,097,889
Primary solid biomass (includes fuelwood)	4,943	X	1,035,139
Biogas and liquid biomass	138	X	14,931
Geothermal	0.0	X	43,802
Solar	95.2	X	2,217
Wind	0.6	X	1,748
Tide, wave, and ocean	0.0	X	53

Energy Consumption by Sector, 1999

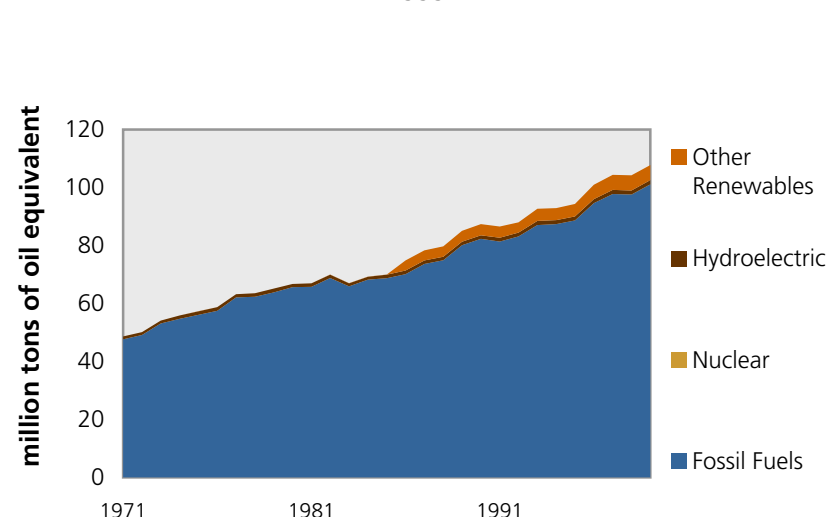
(in thousand metric tons of oil equivalent)

	Australia	Oceania	World
Industry	24,158	X	2,140,474
Transportation	27,362	X	1,755,505
Agriculture	1,601	X	166,287
Commercial & public services	4,895	X	511,555
Residential	8,828	X	1,845,475
Non-energy uses and "other" consumption	3,030	X	333,981
Total final energy consumption {d}	69,874	X	6,753,276

Energy Consumption: Relative trends, Australia, 1971-1999



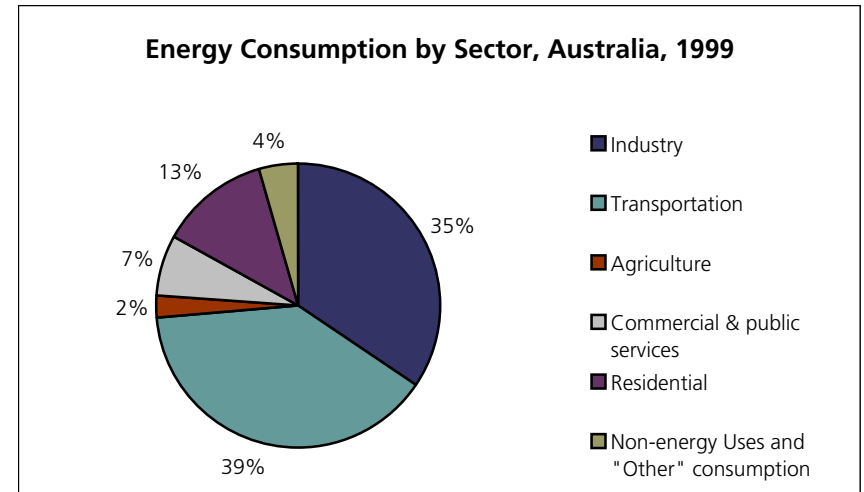
Energy Consumption by Source, Australia, 1971-1999



View more Country Profiles on-line at <http://earthtrends.wri.org>

Energy and Resources-- Australia

	Australia	Oceania	World
Resource Consumption			
Passenger cars per 1000 people, 1998	X	X	109
Annual motor gasoline consumption, 2000 (liters per person)	940	X	179
Annual meat consumption, 1998 (kg per person)	110	93	38
Annual paper consumption, 2000 (kg per person)	198	X	53
Annual coffee consumption, 2001 (kg per person)	X	X	X



Footnotes:

- One metric ton of oil equivalent (toe) is defined as 10 Exp. 7 kilocalories or 41.868 gigajoules, equal to the amount of energy contained in 1 metric ton of crude oil.
- In metric tons of oil equivalent per million constant 1995 international dollars.
 $TPES = \text{Energy Production} + \text{Imports} - \text{Exports} - \text{Stock Changes} - \text{Consumption by International Marine Bunkers}$
- In metric tons of oil equivalent per million constant 1995 international dollars.
- "Total final consumption" is calculated as the sum of energy consumption by sectors.

View more Country Profiles on-line at <http://earthtrends.wri.org>