

Model Year 2013

Fuel Economy Guide



EPA DOT Fuel Economy and Environment Gasoline Vehicle

Fuel Economy
31 MPG
combined city/hwy
27 city
38 Highway
3.2 gallons per 100 miles

Small SUVs range from 16 to 32 MPG. The best vehicle rates 112 MPG.

You save \$3,100
in fuel costs over 5 years compared to the average new vehicle.

Annual fuel cost \$1,700

Fuel Economy & Greenhouse Gas Rating (tailpipe only) Smog Rating (tailpipe only)
1 8 10 1 6 10
Best Rest Best Rest

This vehicle emits 237 grams CO₂ per mile. The best emits 67 grams per mile (tailpipe only). Producing and distributing gasoline adds 18 grams per mile.

Actual results will vary for many reasons, including driving conditions and how you drive and maintain your vehicle. The average new vehicle gets 23 MPG and costs \$11,000 to fuel over 5 years. Cost estimates are based on 15,000 miles per year at \$3.95 per gallon. MPGe is miles per gasoline gallon equivalent. Vehicle emissions are a significant cause of climate change and smog.

fueleconomy.gov
Calculate personalized estimates and compare vehicles

Smartphone QR Code



www.fueleconomy.gov

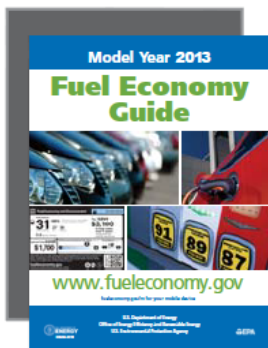
fueleconomy.gov/m for your mobile device



U.S. Department of Energy
Office of Energy Efficiency and Renewable Energy
U.S. Environmental Protection Agency



UPDATED: March 17, 2015



contents

- Using the *Fuel Economy Guide* / i
- Getting to Know the New Fuel Economy and Environment Labels / 1
- Understanding the Guide Listings / 2
- Why Some Vehicles Are Not Listed / 2
- Vehicle Classes Used in This Guide / 3
- Tax Incentives and Disincentives / 3
- Why Consider Fuel Economy / 3
- Fueling Options / 4
- Fuel Economy and Annual Fuel Cost Ranges for Vehicle Classes / 4
- Model Year 2013 Fuel Economy Leaders / 5
- 2013 Model Year Vehicles / 6
- Diesel Vehicles / 26
- Electric Vehicles / 27
- Plug-in Hybrid Electric Vehicles / 29
- Hybrid Electric Vehicles / 28
- Compressed Natural Gas Vehicles / 31
- Fuel Cell Vehicles / 31
- Ethanol Flexible Fuel Vehicles / 32
- Index / 37

USING THE FUEL ECONOMY GUIDE

The U.S. Environmental Protection Agency (EPA) and U.S. Department of Energy (DOE) produce the *Fuel Economy Guide* to help car buyers choose the most fuel-efficient vehicle that meets their needs. The Guide is published in print and on the Web at

www.fueleconomy.gov. For additional print copies, please call DOE's Clean Cities Technical Response Service at 1-800-254-6735 or mail your request to: NREL - Fuel Economy Guide, 15013 Denver West Parkway, Golden, CO 80401-3305.

Fuel Economy Estimates

Most vehicles in this Guide (other than plug-in hybrids) have three fuel economy estimates:

- A "city" estimate that represents urban driving, in which a vehicle is started in the morning (after being parked all night) and driven in stop-and-go traffic
- A "highway" estimate that represents a mixture of rural and interstate highway driving in a warmed-up vehicle, typical of longer trips in free-flowing traffic
- A "combined" estimate that represents a combination of city driving (55%) and highway driving (45%)

Estimates for all vehicles are based on laboratory testing under standardized conditions to allow for fair comparisons.

Flexible-fuel vehicles (FFVs), which can use gasoline and E85, have estimates for both fuels. Plug-in hybrid electric vehicles (PHEVs) have estimates for (1) electric-only or blended electric and gasoline operation and (2) gasoline-only operation and are discussed in more detail on page 26. For answers to frequently asked questions about fuel economy estimates, visit www.fueleconomy.gov.

Annual Fuel Cost Estimates

This Guide provides annual fuel cost estimates, rounded to the nearest \$50, for each vehicle. The estimates are based on the assumptions that you travel 15,000 miles per year (55% under city driving conditions and 45% under highway conditions) and that fuel costs

\$2.45/gallon for regular unleaded gasoline and \$2.82/gallon for premium. Cost-per-gallon assumptions for vehicles that use other fuel types are discussed at the beginning of those vehicle sections. The fuel costs were determined in advance to allow time for printing fuel economy labels and the Guide, and may not reflect current fuel prices.

Visit www.fueleconomy.gov to personalize fuel costs based on current fuel prices and your driving habits.

Your Fuel Economy Will Vary

Even though EPA recently improved its methods for estimating fuel economy, your vehicle's fuel economy will almost certainly vary from EPA's estimate. Fuel economy is not a fixed number; it varies significantly based on where you drive, how you drive, and other factors. Thus, it is impossible for one set of estimates to predict fuel economy precisely for all drivers in all environments. For example, the following factors can lower your vehicle's fuel economy:

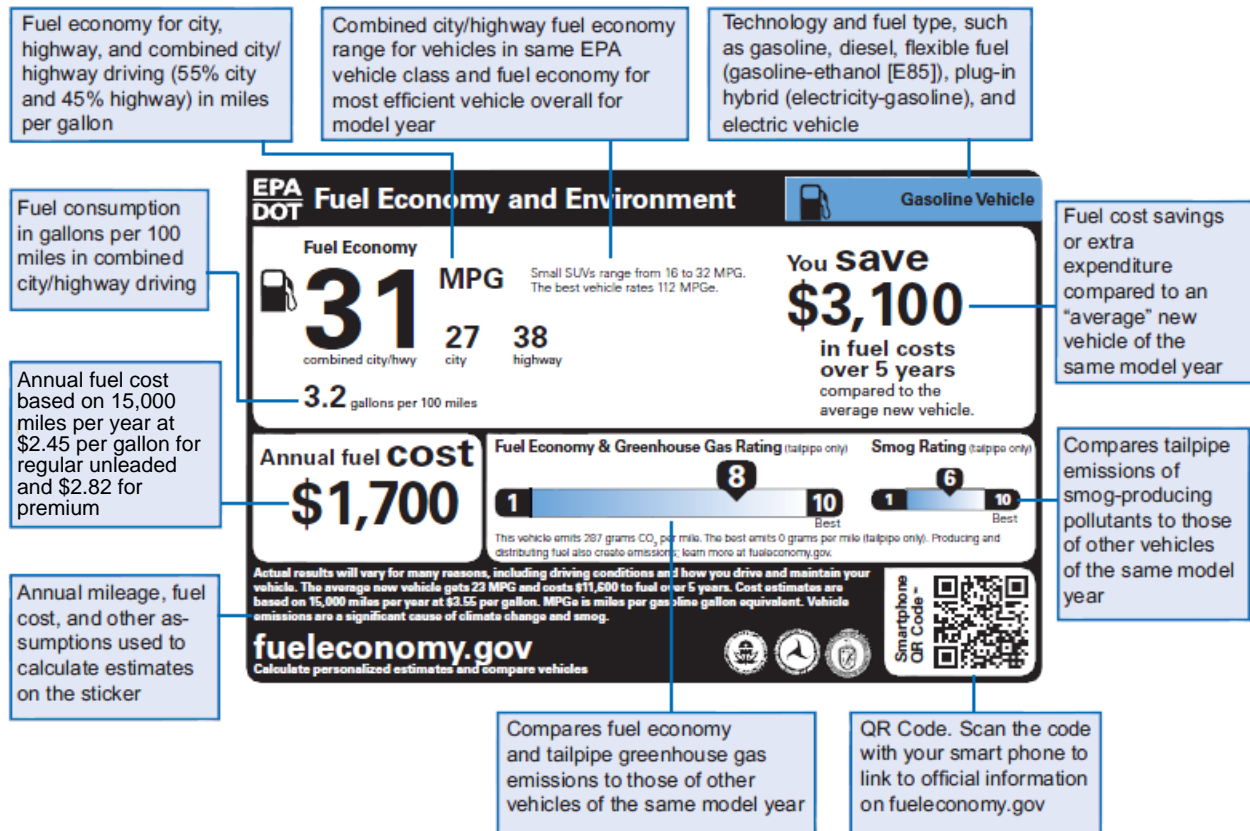
- Aggressive driving (hard acceleration and braking)
- Excessive idling, accelerating, and braking in stop-and-go traffic
- Cold weather (engines are more efficient when warmed up)
- Driving with a heavy load or with the air conditioner running
- Improperly tuned engine or under-inflated tires
- Use of remote starters

In addition, small variations in vehicle manufacturing can cause fuel economy variations in the same make and model, and some vehicles don't attain maximum fuel economy until they are "broken in" (around 3,000–5,000 miles).

So, please remember that the EPA ratings are a useful tool for comparing vehicles when car buying, but they may not accurately predict the fuel economy you will get. This is also true for annual fuel cost estimates. For more information on fuel economy ratings and factors that affect fuel economy, visit www.fueleconomy.gov.

GETTING TO KNOW THE NEW FUEL ECONOMY AND ENVIRONMENT LABEL

EPA recently redesigned the Fuel Economy and Environment labels that must be affixed to new vehicles starting with the 2013 model year—some manufacturers also adopted the new label for model year 2012 vehicles. The example below shows a sample label for a gasoline vehicle. Slightly different designs are used for flexible-fuel vehicles, electric vehicles, and plug-in hybrids. For more in-depth descriptions of label information for all vehicle types, visit www.fueleconomy.gov.



New Label Features

Fuel Consumption Rate

This shows fuel use in gallons per 100 miles (kilowatt-hours per 100 miles for vehicles using electricity).

Fuel Economy & Greenhouse Gas Ratings

Vehicles are assigned a rating from 1 (worst) to 10 (best) for fuel economy and greenhouse gas (GHG) emissions. The GHG rating that appears on the labels (window stickers) will be the same as the fuel economy rating for gasoline operation. Vehicles using other fuels are rated separately based on their fuel economy and carbon dioxide (CO₂) emissions and thus may have different GHG and fuel economy ratings on their labels. For flexible fuel vehicles, GHG ratings for ethanol (E85) as well as gasoline operation will be listed at www.fueleconomy.gov.

The GHG rating does not account for emissions generated "upstream" of the vehicle (e.g., electricity production). Visit www.fueleconomy.gov for more about upstream emissions.

Below the rating scale, the label also provides an estimate for the amount of CO₂ per mile emitted by that specific vehicle along with an estimate of the CO₂ emissions for the best vehicle in that model year.

Smog Rating

Vehicles are assigned a rating from 1 (worst) to 10 (best) for tailpipe emissions of pollutants that cause smog and other local air pollution. For those vehicles that run on electricity, the tailpipe emissions are zero.

5-Year Fuel Cost Savings

This measure shows how much more or less it will cost to fuel the vehicle over 5

years (rounded to the nearest \$50) compared to an "average" new vehicle of the same model year. For the 2013 model year, EPA estimates that the average new vehicle will get 23 mpg.

Smartphone QR Code

You can use a smartphone equipped with a scanner "app" to scan this code and access additional information about the vehicle on www.fueleconomy.gov. On www.fueleconomy.gov, you can also personalize your fuel economy, emissions, and cost estimates based on your local fuel prices and driving habits.

Information for Electric Plug-in Vehicles

The new label also includes information on charge time and driving range for plug-in hybrids and electric vehicles.

UNDERSTANDING THE GUIDE LISTINGS

We hope you'll find the *Fuel Economy Guide* easy to use! Fuel economy and annual fuel cost data are organized by vehicle class (see page 3 for a list of classes). Within each class, vehicles are listed alphabetically by manufacturer and model.

Vehicle models with different features, such as engine size or transmission type, are listed as different vehicles. Engine and transmission attributes are shown in the first column under the model name.

Additional attributes needed to distinguish among vehicles (e.g., fuel type, suggested fuel grade) are listed in the "Notes" column. A legend for abbreviations is provided on page 6.

A "P" in the "Notes" column indicates that the manufacturer *recommends* that the vehicle be fueled with premium-grade gasoline, and a "PR" indicates that the manufacturer *requires* premium. The higher price of premium fuel is reflected in the annual fuel cost for these vehicles.

The most fuel-efficient vehicles in each class and alternative fuel vehicles are indicated with special markings (see diagram below). Vehicles that can use more than one kind of fuel have an entry for each fuel type.

Interior passenger and cargo volumes are located in the index at the back of the Guide.

WHY SOME VEHICLES ARE NOT LISTED

Light-duty fuel economy regulations do not apply to

- Sport utility vehicles (SUVs) and passenger vans with a gross vehicle weight rating (GVWR) of more than 10,000 pounds—GVWR is the vehicle weight plus carrying capacity
- Other vehicles with a GVWR of 8,500 pounds or more or a curb weight over 6,000 pounds

Therefore, manufacturers do not have to estimate their fuel economy, and fuel economy labels are not posted on their windows..

Also, fuel economy information on some vehicles is not available in time to be printed in the Guide. However, you can find more up-to-date information at www.fueleconomy.gov.

Sample Vehicle Listing
(Not Actual Data)

Manufacturer Model Configuration (trans, eng size, cyl)	MPG		Annual Fuel Cost	GHG Rating	Notes
	City/Hwy	Comb			
MITSUBISHI i-MiEV					
A-1	126/99	112	\$550	10	EL
MINI John Cooper Works Clubman					
A-S6, 1.6L, 4cyl	26/34	29	\$1,950	8	PT
M-6, 1.6L, 4cyl	26/35	29	\$1,950	8	PT
MIDSIZE CARS					
BUICK Regal					
A-S6, 2.0L, 4cyl	19/27	22	\$2,400	5	T
M-6 , 2.0L, 4cyl	19/27	22	\$2,400	5	T
Regal FFV					
A-S6, 2.0L , 4cyl	18/29	22	\$2,400	5	Gas T
	13/20	15	\$3,100	5	E85

Manufacturer

Model

The most fuel-efficient vehicle per class is listed in blue bold face type and marked with a blue pointer (▶).

EPA city & highway MPG estimates
EXAMPLE:
126 MPG city, 99 MPG highway

Transmission information: type (A=automatic, A-S=automatic transmission-select shift, AV=continuously variable transmission, M=manual, etc.) followed by number of gears or speeds

Alternative fuel vehicles are highlighted by a blue bar, and those that can use two kinds of fuel, such as flexible fuel vehicles, have an entry for each fuel type.

EPA combined city/highway MPG estimate based on 55% city and 45% highway driving

Compares the tailpipe greenhouse gas emissions to those of other vehicles of the same model year on a scale of 1 (worst) to 10 (best)

Additional information to help further identify the vehicle (e.g., engine and fuel system info) along with other useful information about taxes, required fuel grade, etc.
EXAMPLE: P=Premium Gasoline Recommended, T=Turbocharger

Vehicle Class

Estimated annual fuel cost, assuming 15,000 miles of travel a year (55% city and 45% highway) and an average fuel price

Flexible fuel vehicles (FFVs) can run on gasoline or E85 (a mixture of 85% ethanol & 15% gasoline).

Engine size (in liters) followed by number of cylinders.
EXAMPLE: 2.0-liter, 4-cylinder engine

VEHICLE CLASSES USED IN THIS GUIDE

CARS		TRUCKS	
CLASS	Passenger and Cargo Volume (cu. ft.)	CLASS	Gross Vehicle Weight Rating* (pounds)
TWO-SEATERS		PICKUP TRUCKS	
SEDANS		Small	Under 6,000
Minicompact	Under 85	Standard	6,000 to 8,500
Subcompact	85 to 99	VANS	
Compact	100 to 109	Passenger	Under 10,000
Midsize	110 to 119	Cargo	Under 8,500
Large	120 or more	MINIVANS	
STATION WAGONS		SPORT UTILITY VEHICLES	
Small	Under 130	Small	Under 6,000
Midsize	130 to 159	Standard	6,000 to 9,999
Large	160 or more	SPECIAL PURPOSE VEHICLES	
			Under 8,500

*Gross Vehicle Weight Rating = vehicle weight plus carrying capacity.

TAX INCENTIVES AND DISINCENTIVES

Federal Tax Credits

You may be eligible for a federal income tax credit of up to \$7,500 if you purchase a qualifying electric or plug-in hybrid vehicle in 2012–13.

Visit www.fueleconomy.gov for more information on qualifying models, credit amounts, and phase-out dates.

Gas Guzzler Tax

The Energy Tax Act of 1978 requires auto companies to pay a "gas guzzler" tax on the sale of cars with exceptionally low fuel economy. Such vehicles are identified in the Guide by the word "Tax" in the "Notes" column. In the dealer showroom, the words "Gas Guzzler" and the tax amount are listed on the vehicle's fuel economy label. The tax does not apply to light trucks.

WHY CONSIDER FUEL ECONOMY?

Save Money

You could save as much as \$1,700 in fuel costs each year by choosing the most fuel-efficient vehicle in a particular class. This can add up to thousands of dollars over a vehicle's lifetime. Fuel-efficient models come in all shapes and sizes, so you need not sacrifice utility or size.

Each vehicle listing in the *Fuel Economy Guide* provides an estimated annual fuel cost (see page i). The online guide at www.fueleconomy.gov features an annual fuel cost calculator that allows you

to insert your local gasoline prices and typical driving conditions (percentage of city and highway driving) to obtain the most accurate fuel cost information for your vehicle.

Reduce Oil Dependence Costs

Buying a more fuel-efficient vehicle can help reduce our dependence on petroleum. About 45% of the oil used to produce the gasoline you put in your tank is imported. The United States uses about 19 million barrels of oil per day, two thirds of which is used for transportation. Oil dependence cost the U.S. economy around \$500 billion in 2011 alone.

Reduce Climate Change

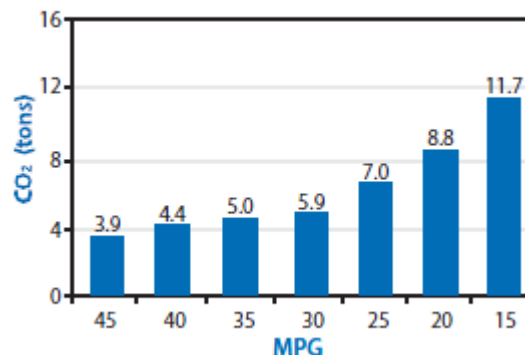
Climate change is widely viewed as the most significant long-term threat to the global environment, and human-made emissions of greenhouse gases (GHGs) are very likely the cause of most of the observed global warming over the last 50 years.

Burning fossil fuels such as gasoline and diesel releases carbon dioxide (CO₂) and other GHGs into the atmosphere, contributing to global climate change. CO₂ is the most important human-made GHG, and highway vehicles account for roughly a quarter (1.6 billion tons) of U.S. CO₂ emissions each year.

Every gallon of gasoline your vehicle burns puts about 20 pounds of CO₂ into the atmosphere; the average vehicle emits around 5 to 8 tons of CO₂ each year. Unlike other forms of vehicle pollution, CO₂ emissions cannot be reduced by pollution control technologies. They can only be reduced by burning less fuel or by burning fuel that contains less carbon.

One of the most important things you can do to reduce your contribution to climate change is to buy a vehicle with better fuel economy. Switching from a vehicle that gets 20 mpg to one that gets 25 mpg can reduce CO₂ emissions by 10 tons over a vehicle's lifetime, more than a year's worth of use.

Annual CO₂ Emissions by Vehicle MPG



You can also reduce your contribution to climate change by

- Getting the best fuel economy out of your car
- Using a low-carbon fuel, such as compressed natural gas (CNG) or electricity from a renewable resource such as wind or hydropower
- Walking, biking, or taking public transit more often

FUELING OPTIONS

Ethanol Blends – E85 & E10

Ethanol is a domestically produced, renewable fuel made primarily from starch-based crops such as corn. It may also be made from "cellulosic biomass," such as crop residues and wood, but this is not yet done on a large scale. The use of ethanol as a vehicle fuel can reduce

greenhouse gas emissions and U.S. dependence on petroleum.

E10 is a blend of 10% ethanol and 90% gasoline and is legal for use in any gasoline-powered vehicle. More than 95% of U.S. gasoline contains up to 10% ethanol to boost octane, meet air quality requirements, or satisfy the Renewable Fuel Standard.

E85 is a high-level ethanol-gasoline blend containing 51% to 83% ethanol, depending on the season and geographic location. Drivers can use E85 in flexible fuel vehicles (FFVs), which are specially designed to run on gasoline, E85, or any mixture of the two. FFVs are offered by several vehicle manufacturers. To determine whether your vehicle is an FFV, check the inside of your car's fuel filler door for an identification sticker or consult your owner's manual. More than two thousand filling stations in the United States currently sell E85. Visit afdc.energy.gov/afdc/locator/stations to find stations near you.

There is no noticeable difference in

vehicle performance when low-level ethanol blends are used. However, FFVs operating on E85 usually experience a 25–30% drop in fuel economy due to ethanol's lower energy content relative to gasoline.

Biodiesel

Biodiesel is a domestically produced renewable fuel manufactured from vegetable oils or animal fats for use in diesel vehicles. Using biodiesel in place of petroleum diesel reduces greenhouse gas emissions and contributes to national energy security.

Biodiesel can be blended with petroleum diesel at any percentage. The most common biodiesel blend is B20, which contains 20% biodiesel and 80% petroleum diesel. B5 (5% biodiesel and 95% petroleum diesel) is another common blend. All vehicle manufacturers have approved biodiesel blends up to and including B5 for use in all diesel engines. However, using higher-level biodiesel blends may affect vehicle warranties.

Check your owner's manual or with your vehicle manufacturer to determine the right blend for your vehicle.

Purchase commercial-grade biodiesel from a reputable dealer. Never refuel with recycled grease or vegetable oil that has not been converted to biodiesel. It will damage your engine.

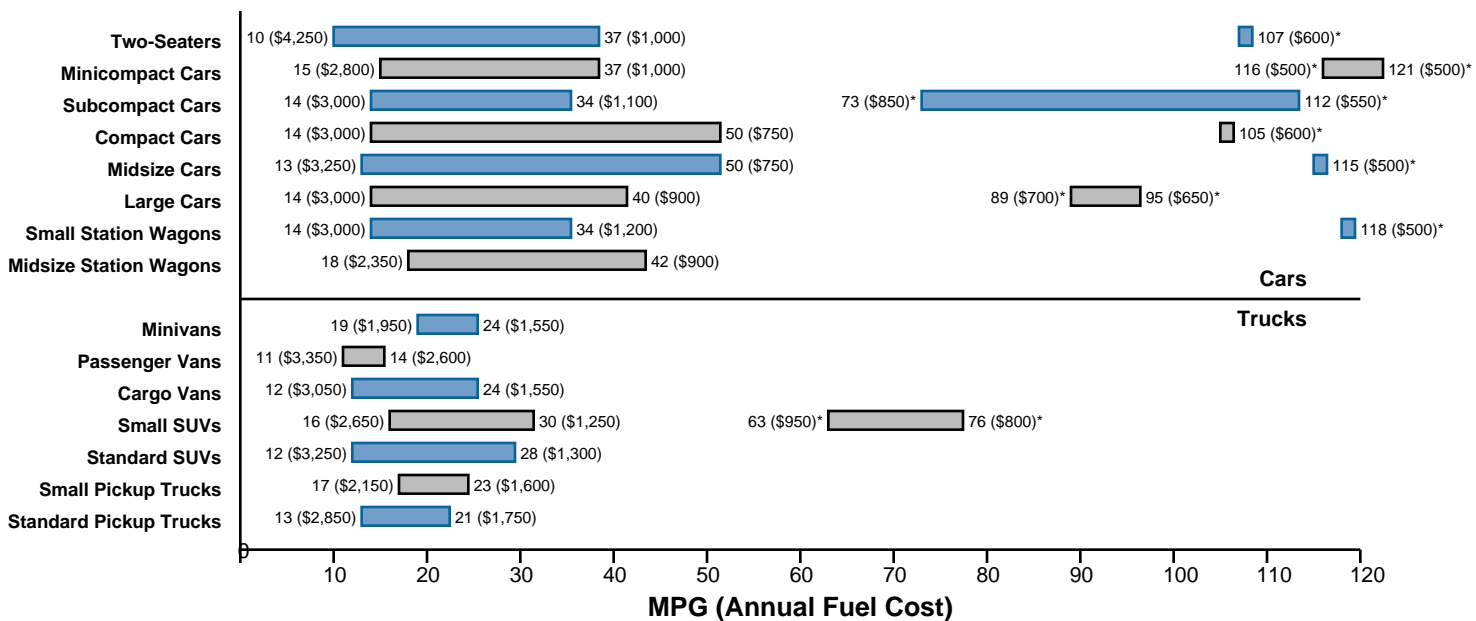
More than 250 stations currently dispense B20. Visit afdc.energy.gov/afdc/locator/stations to find service stations selling biodiesel near you.

Premium- vs. Regular-Grade Gasoline

Regular unleaded is the recommended gasoline for most cars. Using a higher-octane gasoline than recommended by the owner's manual does not improve performance or fuel efficiency; it only costs more money. Check your owner's manual to determine the lowest grade of fuel you can use.

FUEL ECONOMY AND ANNUAL FUEL COST RANGES FOR VEHICLE CLASSES

The graph below provides the fuel economy and annual fuel cost ranges for the vehicles in each class so you can see where a given vehicle's fuel economy and cost fall within its class. Combined city and highway MPG estimates are used; these assume you will drive 55% in the city and 45% on the highway. Annual fuel costs assume you travel 15,000 miles each year and fuel costs \$2.45/gallon for regular unleaded gasoline and \$2.82/gallon for premium, \$2.92 for diesel, and \$.12/kWh for electricity. Visit www.fueleconomy.gov to calculate annual fuel cost for a specific vehicle based on your own driving conditions and fuel prices.



Fuel economy estimates on this chart do not include vehicles operating on compressed natural gas (CNG), electricity, or E85.

* Represents electric vehicles and plug-in hybrids. Fuel economy values for these vehicles are in miles per gallon gasoline equivalent (MPGe).

MODEL YEAR 2013 FUEL ECONOMY LEADERS

Listed below are vehicles with the highest fuel economy in the most popular classes. For each vehicle class we list the most fuel efficient conventional vehicle, and the most efficient plug-in hybrid (PHEV) or electric (EV). Rankings are based on combined city and highway fuel economy estimates which assume 55% city driving and 45% highway driving. Please note that many vehicle models come in a range of engine sizes and trim lines, resulting in different fuel economy values. If there is only one vehicle in the class, we do not list a fuel economy leader.

	Trans Type/Speeds	Eng Size / Cylinders	MPG Combined		Trans Type/Speeds	Eng Size / Cylinders	MPG Combined
TWO-SEATER CARS				SMALL PICKUP TRUCKS			
SMART				TOYOTA			
fortwo electric drive convertible	A-1		107*	Tacoma 2WD	M-5	2.7L/4	23
fortwo electric drive coupe	A-1		107*	STANDARD PICKUP TRUCKS			
HONDA				CHEVROLET			
CR-Z	AV-S7	1.5L/4	37	Silverado 15 Hybrid 2WD	AV	6.0L/8	21
MINICOMPACT CARS				Silverado 15 Hybrid 4WD	AV	6.0L/8	21
SCION				GMC			
iQ EV	AV		121*	Sierra 15 Hybrid 2WD	AV	6.0L/8	21
iQ	AV	1.3L/4	37	Sierra 15 Hybrid 4WD	AV	6.0L/8	21
SUBCOMPACT CARS				RAM			
MITSUBISHI				1500 HFE 2WD	A-8	3.6L/6	21
i-MiEV	A-1		112*	VANS, CARGO			
CHEVROLET				CHEVROLET			
Spark	M-5	1.2L/4	34	Express 1500 2WD Cargo	A-4	4.3L/6	17
COMPACT CARS				GMC			
FORD				Savana 1500 2WD (cargo)	A-4	4.3L/6	17
Focus Electric	A-1		105*	VANS, PASSENGER			
TOYOTA				CHEVROLET			
Prius c	AV	1.5L/4	50	Express 1500 2WD Passenger	A-4	5.3L/8	14‡
MIDSIZE CARS				Express 1500 AWD Passenger	A-4	5.3L/8	14‡
NISSAN				FORD			
Leaf	A-1		115*	E150 Wagon FFV	A-4	4.6L/8	14‡
TOYOTA				GMC			
Prius	AV	1.8L/4	50	Savana 1500 2WD (Passenger)	A-4	5.3L/8	14‡
LARGE CARS				Savana 1500 AWD (Passenger)	A-4	5.3L/8	14‡
TESLA				MINIVANS			
Model S (60 kW-hr battery pack)	A-1		95*	MAZDA			
FORD				5	M-6	2.5L/4	24
C-MAX Hybrid FWD	AV	2.0L/4	40		A-S5	2.5L/4	24
SMALL STATION WAGONS				SMALL SPORT UTILITY VEHICLES			
HONDA				LEXUS			
Fit EV	A-1		118*	RX 450h	AV-S6	3.5L/6	30
AUDI				TOYOTA			
A3 (diesel)	AM-S6	2.0L/4	34	RAV4 EV	AV		76*
VOLKSWAGEN				STANDARD SPORT UTILITY VEHICLES			
Jetta SportWagen (diesel)	M-6	2.0L/4	34	TOYOTA			
MIDSIZE STATION WAGONS				Highlander Hybrid 4WD	AV	3.5L/6	28
TOYOTA							
Prius v	AV	1.8L/4	42				

* This is an electric vehicle. Since electricity is not measured in gallons, a conversion factor is used to translate the fuel economy into miles per gallon of gasoline equivalent (MPGe).

† This vehicle is a plug-in hybrid, which runs on both gasoline and electricity. Since electricity is not measured in gallons, a conversion factor is used to translate the fuel economy when running on electricity into miles per gallon of gasoline equivalent (MPGe). The Combined MPGe estimate includes both city and highway driving and gasoline and electric energy use.

‡ When operated on gasoline

2013 MODEL YEAR VEHICLES

This section contains the fuel economy values for 2013 model year vehicles. Additional information for alternative fuel vehicles can be found on pages 26–36. Alternative fuel vehicles are highlighted with a blue bar, and those that can use two kinds of fuel, such as flexible fuel vehicles, have an entry for each fuel type. The most fuel-efficient vehicles in each class are listed in blue boldface type and marked with a blue pointer (▶).

Manufacturer Model Configuration (trans, eng size,cyl)	MPG		Annual Fuel Cost	GHG Rating	Notes
	City/Hwy	Comb			
TWO SEATER CARS					
ASTON MARTIN					
V8 Vantage					
AM-7, 4.7L, 8cyl	14/21	16	\$2,650	3	P Tax
M-6, 4.7L, 8cyl	13/19	15	\$2,800	3	P Tax
V8 Vantage S					
AM-7, 4.7L, 8cyl	14/21	16	\$2,650	3	P Tax
M-6, 4.7L, 8cyl	13/19	15	\$2,800	3	P Tax
AUDI					
TT Roadster quattro					
AM-S6, 2.0L, 4cyl	22/31	26	\$1,650	7	P T
BMW					
Z4 sDrive28i					
A-8, 2.0L, 4cyl	22/33	26	\$1,650	7	P T
M-6, 2.0L, 4cyl	22/34	26	\$1,650	7	P T
Z4 sDrive35i					
AM-S7, 3.0L, 6cyl	17/24	19	\$2,250	4	P T
M-6, 3.0L, 6cyl	19/26	21	\$2,000	5	P T
Z4 sDrive35is					
AM-S7, 3.0L, 6cyl	17/24	19	\$2,250	4	P T
BUGATTI					
Veyron					
AM-S7, 8.0L, 16cyl	8/15	10	\$4,250	1	P T Tax
CHEVROLET					
Corvette					
A-S6, 6.2L, 8cyl	15/25	18	\$2,050	4	
M-6, 6.2L, 8cyl	14/21	17	\$2,500	4	P S Tax
M-6, 6.2L, 8cyl	16/26	19	\$1,950	4	
M-6, 7.0L, 8cyl	15/24	18	\$2,350	4	P
FERRARI					
458 Italia					
AM-7, 4.5L, 8cyl	13/17	15	\$2,800	3	P Tax SS
AM-7, 4.5L, 8cyl	13/17	14	\$3,000	2	P Tax
458 Spider					
AM-7, 4.5L, 8cyl	13/17	14	\$3,000	2	P Tax
AM-7, 4.5L, 8cyl	13/17	15	\$2,800	3	P Tax SS
F12					
AM-7, 6.3L, 12cyl	11/16	13	\$3,250	2	P Tax
AM-7, 6.3L, 12cyl	12/16	13	\$3,250	2	P Tax
HONDA					
CR-Z					
▶AV-S7, 1.5L, 4cyl	36/39	37	\$1,000	9	HEV
M-6, 1.5L, 4cyl	31/38	34	\$1,100	9	HEV
LAMBORGHINI					
Aventador Coupe					
AM-S7, 6.5L, 12cyl	11/18	13	\$3,250	2	P Tax
Aventador Roadster					
AM-S7, 6.5L, 12cyl	10/16	12	\$3,500	1	P Tax
Gallardo Coupe					
AM-S6, 5.2L, 10cyl	13/20	16	\$2,650	3	P Tax
M-6, 5.2L, 10cyl	12/20	15	\$2,800	3	P Tax
Gallardo Spyder					
AM-S6, 5.2L, 10cyl	13/20	16	\$2,650	3	P Tax
M-6, 5.2L, 10cyl	12/20	14	\$3,000	2	P Tax
MAZDA					
MX-5					
A-S6, 2.0L, 4cyl	21/28	23	\$1,850	6	P
M-5, 2.0L, 4cyl	22/28	25	\$1,700	6	P
M-6, 2.0L, 4cyl	21/28	24	\$1,750	6	P
MERCEDES-BENZ					
SL550					
A-7, 4.7L, 8cyl	17/25	20	\$2,100	5	P T
SL63 AMG					
A-7, 5.5L, 8cyl	16/25	19	\$2,250	4	P T
SL65 AMG					
A-7, 6.0L, 12cyl	14/21	17	\$2,500	4	P T Tax
SLK250					
A-7, 1.8L, 4cyl	23/33	26	\$1,650	7	P T
M-6, 1.8L, 4cyl	22/32	26	\$1,650	7	P T
SLK350					
A-7, 3.5L, 6cyl	21/29	24	\$1,750	6	P
SLK55 AMG					
A-7, 5.5L, 8cyl	19/28	22	\$1,950	5	P
SLS AMG Coupe					
AM-7, 6.2L, 8cyl	13/19	15	\$2,800	3	P Tax
SLS AMG GT Coupe					
AM-7, 6.2L, 8cyl	13/19	15	\$2,800	3	P Tax
SLS AMG GT Roadster					
AM-7, 6.2L, 8cyl	13/19	15	\$2,800	3	P Tax
SLS AMG Roadster					
AM-7, 6.2L, 8cyl	13/19	15	\$2,800	3	P Tax

ABBREVIATIONS:

▶.....Highest MPG in Class

2WD.....Two-Wheel Drive

4WD.....Four-Wheel Drive

A.....Automatic Transmission

A-S.....Automatic Transmission-Select Shift

AM-S.....Automated Manual-Selectable

AM.....Automated Manual

AV.....Continuously Variable Transmission

AV-S.....Continuously Variable Transmission with Select Shift

AWD.....All-Wheel Drive

City.....MPG on City Test Procedure

CNG.....Compressed Natural Gas

Comb.....Combined

D.....Diesel

E85.....85% Ethanol/15% Gasoline

Eng Size.....Engine Volume in Liters

EV.....Electric Vehicle

FFV.....Flexible Fuel Vehicle

FWD.....Front-Wheel Drive

Gas.....Regular Gasoline

HEV.....Hybrid-Electric Vehicle

Hwy.....MPG on Highway Test Procedure

Li-Ion.....Lithium Ion

LWB.....Long Wheel Base

M.....Manual Transmission

Mid.....Midgrade Gasoline

Mode.....Multi Model Transmission

MPG.....Miles per Gallon

NA.....Not Available at Press Time

Ni-MH.....Nickel-Metal Hydride

ORP.....Off-Road Package

P.....Premium Gasoline Recommended

PHEV.....Plug-in Hybrid

PZEV.....Partial Zero Emissions Vehicle

PR.....Premium Gasoline Required

PT4WD.....Part-time 4WD

S.....Supercharger

SIDI.....Spark Ignition Direct Injection

SS.....Stop-Start Option

ST.....Sport Transmission

T.....Turbocharger

Tax.....Subject to Gas Guzzler Tax

Trans.....Transmission

Manufacturer Model Configuration (trans, eng size,cyl)	MPG		Annual Fuel Cost	GHG Rating	Notes
	City/Hwy	Comb			
MINI					
Cooper Clubvan					
A-S6, 1.6L, 4cyl	27/35	30	\$1,400	8	P
M-6, 1.6L, 4cyl	27/35	30	\$1,400	8	P
Cooper Coupe					
A-S6, 1.6L, 4cyl	28/36	31	\$1,350	8	P
M-6, 1.6L, 4cyl	29/37	32	\$1,300	8	P
Cooper Roadster					
A-S6, 1.6L, 4cyl	27/35	30	\$1,400	8	P
M-6, 1.6L, 4cyl	27/35	30	\$1,400	8	P
Cooper S Coupe					
A-S6, 1.6L, 4cyl	26/34	29	\$1,450	8	P T
M-6, 1.6L, 4cyl	26/35	29	\$1,450	8	P T
Cooper S Roadster					
A-S6, 1.6L, 4cyl	26/34	29	\$1,450	8	P T
M-6, 1.6L, 4cyl	26/35	29	\$1,450	8	P T
John Cooper Works Coupe					
A-S6, 1.6L, 4cyl	25/34	29	\$1,450	8	P T
M-6, 1.6L, 4cyl	26/35	29	\$1,450	8	P T
John Cooper Works GP-2					
M-6, 1.6L, 4cyl	26/35	29	\$1,450	8	P T
John Cooper Works Roadster					
A-S6, 1.6L, 4cyl	26/34	29	\$1,450	8	P T
M-6, 1.6L, 4cyl	26/35	29	\$1,450	8	P T

NISSAN

370Z					
A-S7, 3.7L, 6cyl	19/26	22	\$1,950	5	P
M-6, 3.7L, 6cyl	18/26	21	\$2,000	5	P
370Z Roadster					
A-S7, 3.7L, 6cyl	18/25	21	\$2,000	5	P
M-6, 3.7L, 6cyl	17/24	20	\$2,100	5	P

PORSCHE

Boxster					
AM-S7, 2.7L, 6cyl	22/32	26	\$1,650	7	P
M-6, 2.7L, 6cyl	20/30	24	\$1,750	6	P
Boxster S					
AM-S7, 3.4L, 6cyl	21/30	24	\$1,750	6	P
M-6, 3.4L, 6cyl	20/28	23	\$1,850	6	P

SMART

fortwo cabriolet					
AM5, 1.0L, 3cyl	34/38	36	\$1,200	9	P
fortwo coupe					
AM5, 1.0L, 3cyl	34/38	36	\$1,200	9	P
fortwo electric drive convertible					
▶A-1	122/93	107	\$600	10	EV
fortwo electric drive coupe					
▶A-1	122/93	107	\$600	10	EV

SRT

Viper					
M-6, 8.4L, 10cyl	12/19	15	\$2,800	3	P Tax

MINICOMPACT CARS

ASTON MARTIN

DB9					
A-S6, 5.9L, 12cyl	13/19	15	\$2,800	3	P Tax

FERRARI

California					
AM-7, 4.3L, 8cyl	13/19	15	\$2,800	3	P Tax
AM-7, 4.3L, 8cyl	14/19	16	\$2,650	3	P Tax SS

Manufacturer Model Configuration (trans, eng size,cyl)	MPG		Annual Fuel Cost	GHG Rating	Notes
	City/Hwy	Comb			
FIAT					
500					
A-6, 1.4L, 4cyl	27/34	30	\$1,400	8	P
M-5, 1.4L, 4cyl	28/34	31	\$1,350	8	P T
M-5, 1.4L, 4cyl	31/40	34	\$1,250	9	P
500 Abarth					
M-5, 1.4L, 4cyl	28/34	31	\$1,350	8	P T
500e					
A-1	122/108	116	\$500	10	EV

JAGUAR

XK					
A-S6, 5.0L, 8cyl	15/22	18	\$2,350	4	P S
A-S6, 5.0L, 8cyl	16/24	19	\$2,250	4	P
XK Convertible					
A-S6, 5.0L, 8cyl	15/22	17	\$2,500	4	P S
A-S6, 5.0L, 8cyl	16/22	18	\$2,350	4	P

LOTUS

Evora					
A-S6, 3.5L, 6cyl	19/28	22	\$1,950	5	P S
A-S6, 3.5L, 6cyl	20/28	23	\$1,850	6	P
M-6, 3.5L, 6cyl	17/26	20	\$2,100	5	P S
M-6, 3.5L, 6cyl	18/26	21	\$2,000	5	P

MINI

Cooper					
A-S6, 1.6L, 4cyl	28/36	31	\$1,350	8	P
M-6, 1.6L, 4cyl	29/37	32	\$1,300	8	P
Cooper Convertible					
A-S6, 1.6L, 4cyl	27/35	30	\$1,400	8	P
M-6, 1.6L, 4cyl	27/35	30	\$1,400	8	P
Cooper S					
A-S6, 1.6L, 4cyl	26/34	29	\$1,450	8	P T
M-6, 1.6L, 4cyl	26/35	29	\$1,450	8	P T
Cooper S Convertible					
A-S6, 1.6L, 4cyl	26/34	29	\$1,450	8	P T
M-6, 1.6L, 4cyl	26/35	29	\$1,450	8	P T
John Cooper Works					
A-S6, 1.6L, 4cyl	26/34	29	\$1,450	8	P T
M-6, 1.6L, 4cyl	26/35	29	\$1,450	8	P T
John Cooper Works Convertible					
A-S6, 1.6L, 4cyl	26/34	29	\$1,450	8	P T
M-6, 1.6L, 4cyl	26/35	29	\$1,450	8	P T

PORSCHE

911 Carrera					
AM-S7, 3.4L, 6cyl	20/28	23	\$1,850	6	P
M-7, 3.4L, 6cyl	19/27	22	\$1,950	5	P
911 Carrera 4					
AM-S7, 3.4L, 6cyl	20/28	23	\$1,850	6	P
M-7, 3.4L, 6cyl	19/27	22	\$1,950	5	P
911 Carrera 4 Cabriolet					
AM-S7, 3.4L, 6cyl	20/27	22	\$1,950	5	P
M-7, 3.4L, 6cyl	19/26	21	\$2,000	5	P
911 Carrera 4S					
AM-S7, 3.8L, 6cyl	19/26	22	\$1,950	5	P
M-7, 3.8L, 6cyl	18/26	21	\$2,000	5	P
911 Carrera 4S Cabriolet					
AM-S7, 3.8L, 6cyl	19/26	21	\$2,000	5	P
M-7, 3.8L, 6cyl	18/26	21	\$2,000	5	P
911 Carrera Cabriolet					
AM-S7, 3.4L, 6cyl	20/28	23	\$1,850	6	P
M-7, 3.4L, 6cyl	19/27	22	\$1,950	5	P

Manufacturer Model Configuration (trans, eng size,cyl)	MPG		Annual Fuel Cost	GHG Rating	Notes
	City/Hwy	Comb			
911 Carrera S					
AM-S7, 3.8L, 6cyl	19/27	22	\$1,950	5	P
M-7, 3.8L, 6cyl	19/27	22	\$1,950	5	P
911 Carrera S Cabriolet					
AM-S7, 3.8L, 6cyl	19/27	22	\$1,950	5	P
M-7, 3.8L, 6cyl	19/27	22	\$1,950	5	P
911 Turbo					
A-7, 3.8L, 6cyl	17/25	19	\$2,250	4	P T
M-6, 3.8L, 6cyl	16/24	19	\$2,250	4	P T
911 Turbo Cabriolet					
A-7, 3.8L, 6cyl	16/24	19	\$2,250	4	P T
M-6, 3.8L, 6cyl	16/24	19	\$2,250	4	P T
911 Turbo S					
A-7, 3.8L, 6cyl	17/25	19	\$2,250	4	P T
911 Turbo S Cabriolet					
A-7, 3.8L, 6cyl	16/24	19	\$2,250	4	P T

SCION

FR-S					
A-S6, 2.0L, 4cyl	25/34	28	\$1,500	7	P
M-6, 2.0L, 4cyl	22/30	25	\$1,700	6	P
iQ					
▶AV, 1.3L, 4cyl	36/37	37	\$1,000	9	
iQ EV					
▶AV	138/105	121	\$500	10	EV

SUBARU

BRZ					
A-S6, 2.0L, 4cyl	25/34	28	\$1,500	7	P
M-6, 2.0L, 4cyl	22/30	25	\$1,700	6	P

SUBCOMPACT CARS

AUDI

A5 Cabriolet					
AV-S8, 2.0L, 4cyl	24/31	26	\$1,650	7	P T
A5 Cabriolet quattro					
A-S8, 2.0L, 4cyl	20/30	24	\$1,750	6	P T
A-S8, 2.0L, 4cyl	20/29	24	\$1,750	6	Gas T
	14/20	16	\$3,050	6	E85
A5 quattro					
A-S8, 2.0L, 4cyl	20/30	24	\$1,750	6	P T
M-6, 2.0L, 4cyl	22/32	26	\$1,650	7	P T
A-S8, 2.0L, 4cyl	20/29	24	\$1,750	6	Gas T
	14/20	16	\$3,050	6	E85
RS 5					
AM-S7, 4.2L, 8cyl	16/23	18	\$2,350	4	P
RS 5 Cabriolet					
AM-S7, 4.2L, 8cyl	16/22	18	\$2,350	4	P
S5					
AM-S7, 3.0L, 6cyl	18/28	21	\$2,000	5	P S
M-6, 3.0L, 6cyl	17/26	20	\$2,100	5	P S
S5 Cabriolet					
AM-S7, 3.0L, 6cyl	18/26	21	\$2,000	5	P S
TT Coupe quattro					
AM-S6, 2.0L, 4cyl	22/31	26	\$1,650	7	P T
TT RS Coupe					
M-6, 2.5L, 5cyl	18/25	20	\$2,100	5	P T

BENTLEY

Continental GTC					
A-S8, 4.0L, 8cyl	14/24	17	\$2,500	4	P T Tax
A-S6, 6.0L, 12cyl	11/19	14	\$3,000	2	Gas T Tax
	8/13	10	\$4,850	2	E85
A-S8, 6.0L, 12cyl	12/20	15	\$2,800	3	Gas T Tax
	9/15	11	\$4,400	3	E85

Manufacturer Model Configuration (trans, eng size,cyl)	MPG		Annual Fuel Cost	GHG Rating	Notes
	City/Hwy	Comb			
Continental Supersports Convertible					
A-S6, 6.0L, 12cyl	12/19	14	\$3,000	2	Gas T Tax
	8/14	10	\$4,850	2	E85

BMW

128ci Convertible					
A-S6, 3.0L, 6cyl	18/27	21	\$2,000	5	P
M-6, 3.0L, 6cyl	19/28	22	\$1,950	5	P
128i					
A-S6, 3.0L, 6cyl	18/28	22	\$1,950	5	P
M-6, 3.0L, 6cyl	19/28	22	\$1,950	5	P
135i					
AM-S7, 3.0L, 6cyl	18/25	21	\$2,000	5	P T
M-6, 3.0L, 6cyl	20/28	23	\$1,850	6	P T
135i Convertible					
AM-S7, 3.0L, 6cyl	18/25	20	\$2,100	5	P T
M-6, 3.0L, 6cyl	19/28	22	\$1,950	5	P T
328i Convertible					
A-S6, 3.0L, 6cyl	18/27	21	\$2,000	5	P
M-6, 3.0L, 6cyl	17/26	20	\$2,100	5	P
328i Coupe					
A-S6, 3.0L, 6cyl	18/28	22	\$1,950	5	P
M-6, 3.0L, 6cyl	19/28	22	\$1,950	5	P
328i Coupe xDrive					
A-S6, 3.0L, 6cyl	17/25	20	\$2,100	5	P
M-6, 3.0L, 6cyl	16/25	19	\$2,250	4	P
335i Convertible					
A-S6, 3.0L, 6cyl	18/27	21	\$2,000	5	P T
M-6, 3.0L, 6cyl	19/28	22	\$1,950	5	P T
335i Coupe					
A-S6, 3.0L, 6cyl	18/27	21	\$2,000	5	P T
M-6, 3.0L, 6cyl	19/28	22	\$1,950	5	P T
335i Coupe xDrive					
A-S6, 3.0L, 6cyl	18/27	21	\$2,000	5	P T
M-6, 3.0L, 6cyl	20/28	23	\$1,850	6	P T
335is Convertible					
AM-S7, 3.0L, 6cyl	17/24	19	\$2,250	4	P T
M-6, 3.0L, 6cyl	18/26	21	\$2,000	5	P T
335is Coupe					
AM-S7, 3.0L, 6cyl	17/24	19	\$2,250	4	P T
M-6, 3.0L, 6cyl	18/26	21	\$2,000	5	P T
640i Convertible					
A-S8, 3.0L, 6cyl	20/30	24	\$1,750	6	P T
640i Coupe					
A-S8, 3.0L, 6cyl	23/33	26	\$1,650	7	P T
650i Convertible					
A-S8, 4.4L, 8cyl	17/25	19	\$2,250	4	P T
650i Convertible xDrive					
A-S8, 4.4L, 8cyl	16/24	19	\$2,250	4	P T
650i Coupe					
A-S8, 4.4L, 8cyl	17/25	19	\$2,250	4	P T
650i Coupe xDrive					
A-S8, 4.4L, 8cyl	16/24	19	\$2,250	4	P T
M3 Convertible					
AM-S7, 4.0L, 8cyl	14/20	16	\$2,650	3	P Tax
M-6, 4.0L, 8cyl	13/20	16	\$2,650	3	P Tax
M3 Coupe					
AM-S7, 4.0L, 8cyl	14/20	16	\$2,650	3	P Tax
M-6, 4.0L, 8cyl	14/20	16	\$2,650	3	P Tax
M6 Convertible					
AM-S7, 4.4L, 8cyl	14/20	16	\$2,650	3	P T Tax
M-6, 4.4L, 8cyl	15/22	17	\$2,500	4	P T Tax
M6 Coupe					
AM-S7, 4.4L, 8cyl	14/20	16	\$2,650	3	P T Tax
M-6, 4.4L, 8cyl	15/22	17	\$2,500	4	P T Tax

Manufacturer Model Configuration (trans, eng size,cyl)	MPG		Annual Fuel Cost	GHG Rating	Notes
	City/Hwy	Comb			
CHEVROLET					
Spark					
A-4, 1.2L, 4cyl	28/37	32	\$1,150	8	
▶M-5, 1.2L, 4cyl	32/38	34	\$1,100	9	
CODA AUTOMOTIVE					
CODA					
A-1	77/68	73	\$850	10	EV
FORD					
Fiesta FWD					
AM-6, 1.6L, 4cyl	29/39	33	\$1,100	8	
M-5, 1.6L, 4cyl	29/39	33	\$1,100	8	
Fiesta SFE FWD					
AM-6, 1.6L, 4cyl	29/40	33	\$1,100	8	
Mustang					
A-6, 3.7L, 6cyl	19/31	23	\$1,600	6	
M-6, 3.7L, 6cyl	19/29	22	\$1,650	5	
A-6, 5.0L, 8cyl	18/25	20	\$1,850	5	
M-6, 5.0L, 8cyl	15/26	19	\$1,950	4	
M-6, 5.8L, 8cyl	15/24	18	\$2,350	4	P S
Mustang Convertible					
A-6, 3.7L, 6cyl	19/30	23	\$1,600	6	
HYUNDAI					
Genesis Coupe					
A-8, 2.0L, 4cyl	17/27	21	\$2,000	5	P T
M-6, 2.0L, 4cyl	21/30	24	\$1,750	6	P T
A-8, 3.8L, 6cyl	16/25	19	\$2,250	4	P
M-6, 3.8L, 6cyl	18/27	21	\$2,000	5	P
INFINITI					
G37 Convertible					
A-S7, 3.7L, 6cyl	17/25	20	\$2,100	5	P
M-6, 3.7L, 6cyl	16/24	19	\$2,250	4	P
G37 Coupe					
A-S7, 3.7L, 6cyl	19/27	22	\$1,950	5	P
M-6, 3.7L, 6cyl	17/25	20	\$2,100	5	P
G37x Coupe					
A-S7, 3.7L, 6cyl	18/25	20	\$2,100	5	P
LEXUS					
IS 250 AWD					
A-S6, 2.5L, 6cyl	21/27	23	\$1,850	6	P
IS 250/IS 250C					
A-S6, 2.5L, 6cyl	21/30	24	\$1,750	6	P
IS 350 AWD					
A-S6, 3.5L, 6cyl	19/26	22	\$1,950	5	P
IS 350/IS 350C					
A-S6, 3.5L, 6cyl	19/27	22	\$1,950	5	P
IS F					
A-S8, 5.0L, 8cyl	16/23	18	\$2,350	4	P
MASERATI					
GranTurismo					
A-6, 4.7L, 8cyl	13/21	16	\$2,650	3	P Tax
GranTurismo Convertible					
A-6, 4.7L, 8cyl	13/20	15	\$2,800	3	P Tax
MERCEDES-BENZ					
C250 Coupe					
A-7, 1.8L, 4cyl	22/31	25	\$1,700	6	P T
C350 4matic Coupe					
A-7, 3.5L, 6cyl	19/27	22	\$1,950	5	P
C350 Coupe					
A-7, 3.5L, 6cyl	20/29	23	\$1,850	6	P
C63 AMG Black Series Coupe					
A-7, 6.2L, 8cyl	13/19	15	\$2,800	3	P Tax

Manufacturer Model Configuration (trans, eng size,cyl)	MPG		Annual Fuel Cost	GHG Rating	Notes
	City/Hwy	Comb			
C63 AMG Coupe					
A-7, 6.2L, 8cyl	13/19	15	\$2,800	3	P Tax
E350 4matic Coupe					
A-7, 3.5L, 6cyl	19/27	22	\$1,950	5	P
A-7, 3.5L, 6cyl	19/29	22	\$1,950	5	P PZEV
A-7, 3.5L, 6cyl	19/27	22	\$1,950	5	Gas
	14/20	16	\$3,050	5	E85
E350 Convertible					
A-7, 3.5L, 6cyl	19/28	22	\$1,950	5	P
A-7, 3.5L, 6cyl	19/28	22	\$1,950	5	Gas
	13/19	16	\$3,050	5	E85
E350 Coupe					
A-7, 3.5L, 6cyl	20/28	23	\$1,850	6	P
A-7, 3.5L, 6cyl	19/29	23	\$1,850	6	P PZEV
A-7, 3.5L, 6cyl	20/28	23	\$1,850	6	Gas
	15/21	17	\$2,850	6	E85
E550 Convertible					
A-7, 4.7L, 8cyl	16/25	19	\$2,250	4	P T
E550 Coupe					
A-7, 4.7L, 8cyl	17/27	21	\$2,000	5	P T
MINI					
Cooper Clubman					
A-S6, 1.6L, 4cyl	27/35	30	\$1,400	8	P
M-6, 1.6L, 4cyl	27/35	30	\$1,400	8	P
Cooper S Clubman					
A-S6, 1.6L, 4cyl	26/34	29	\$1,450	8	P T
M-6, 1.6L, 4cyl	26/35	29	\$1,450	8	P T
John Cooper Works Clubman					
A-S6, 1.6L, 4cyl	26/34	29	\$1,450	8	P T
M-6, 1.6L, 4cyl	26/35	29	\$1,450	8	P T
MITSUBISHI					
i-MiEV					
▶A-1	126/99	112	\$550	10	EV
NISSAN					
Altima Coupe					
AV-S6, 2.5L, 4cyl	23/32	26	\$1,400	7	
GT-R					
AM-6, 3.8L, 6cyl	16/23	19	\$2,250	4	P T
ROUSH PERFORMANCE					
Stage 3 Mustang					
A-6, 5.0L, 8cyl	16/23	18	\$2,350	4	P S
M-6, 5.0L, 8cyl	14/22	17	\$2,500	4	P S Tax
SCION					
xD					
A-4, 1.8L, 4cyl	27/33	29	\$1,250	8	
M-5, 1.8L, 4cyl	27/33	29	\$1,250	8	
SUZUKI					
SX4					
AV, 2.0L, 4cyl	23/30	26	\$1,400	7	
M-6, 2.0L, 4cyl	22/30	25	\$1,450	6	
SX4 AWD					
AV, 2.0L, 4cyl	23/29	25	\$1,450	6	
M-6, 2.0L, 4cyl	22/30	25	\$1,450	6	
VOLKSWAGEN					
Beetle Convertible					
AM-S6, 2.0L, 4cyl	21/29	24	\$1,750	6	P T
M-6, 2.0L, 4cyl	21/30	24	\$1,750	6	P T
A-S6, 2.5L, 5cyl	21/27	23	\$1,600	6	
AM-S6, 2.0L, 4cyl	28/37	31	\$1,400	7	D T
M-6, 2.0L, 4cyl	28/41	32	\$1,350	7	D T
Eos					
AM-S6, 2.0L, 4cyl	22/30	25	\$1,700	6	P T

Manufacturer Model Configuration (trans, eng size,cyl)	MPG		Annual Fuel Cost	GHG Rating	Notes
	City/Hwy	Comb			

VOLVO
C70 FWD

A-S5, 2.5L, 5cyl	19/28	22	\$1,650	5	T
------------------	-------	----	---------	---	---

COMPACT CARS

ACURA

ILX

A-S5, 2.0L, 4cyl	24/35	28	\$1,500	7	P
M-6, 2.4L, 4cyl	22/31	25	\$1,700	6	P

ILX Hybrid

AV-S7, 1.5L, 4cyl	39/38	38	\$1,100	9	HEV P
-------------------	-------	----	---------	---	-------

TSX

A-S5, 2.4L, 4cyl	22/31	26	\$1,650	7	P
M-6, 2.4L, 4cyl	21/29	24	\$1,750	6	P
A-S5, 3.5L, 6cyl	19/28	23	\$1,850	6	P

AUDI

A4

AV-S8, 2.0L, 4cyl	24/31	26	\$1,650	7	P T
-------------------	-------	----	---------	---	-----

A4 quattro

A-S8, 2.0L, 4cyl	20/30	24	\$1,750	6	P T
M-6, 2.0L, 4cyl	22/32	26	\$1,650	7	P T
A-S8, 2.0L, 4cyl	20/29	24	\$1,750	6	Gas T
	14/20	16	\$3,050	6	E85

S4

AM-S7, 3.0L, 6cyl	18/28	21	\$2,000	5	P S
M-6, 3.0L, 6cyl	17/26	20	\$2,100	5	P S

BENTLEY

Continental GT

A-S8, 4.0L, 8cyl	15/24	18	\$2,350	4	P T
A-S6, 6.0L, 12cyl	12/19	14	\$3,000	2	Gas T Tax
	8/14	10	\$4,850	2	E85
A-S8, 6.0L, 12cyl	12/21	15	\$2,800	3	Gas T Tax
	9/15	11	\$4,400	3	E85

BMW

320i

A-S8, 2.0L, 4cyl	24/36	28	\$1,500	7	P T
M-6, 2.0L, 4cyl	23/36	27	\$1,550	7	P T

320i xDrive

A-S8, 2.0L, 4cyl	23/35	27	\$1,550	7	P T
M-6, 2.0L, 4cyl	22/34	26	\$1,650	7	P T

328i

A-S8, 2.0L, 4cyl	23/33	26	\$1,650	7	P T
M-6, 2.0L, 4cyl	22/34	26	\$1,650	7	P T

328i xDrive

A-S8, 2.0L, 4cyl	22/33	26	\$1,650	7	P T
------------------	-------	----	---------	---	-----

335i

A-S8, 3.0L, 6cyl	23/33	26	\$1,650	7	P T
M-6, 3.0L, 6cyl	20/30	23	\$1,850	6	P T

335i xDrive

A-S8, 3.0L, 6cyl	20/30	24	\$1,750	6	P T
M-6, 3.0L, 6cyl	20/28	23	\$1,850	6	P T

640i Gran Coupe

A-S8, 3.0L, 6cyl	20/30	24	\$1,750	6	P T
------------------	-------	----	---------	---	-----

650i Gran Coupe

A-S8, 4.4L, 8cyl	17/25	19	\$2,250	4	P T
------------------	-------	----	---------	---	-----

650i xDrive Gran Coupe

A-S8, 4.4L, 8cyl	16/24	19	\$2,250	4	P T
------------------	-------	----	---------	---	-----

ActiveHybrid 3

A-S8, 3.0L, 6cyl	25/33	28	\$1,500	7	HEV P T
------------------	-------	----	---------	---	---------

M6 Gran Coupe

AM-S7, 4.4L, 8cyl	14/20	16	\$2,650	3	P T Tax
M-6, 4.4L, 8cyl	15/22	17	\$2,500	4	P T Tax

Manufacturer Model Configuration (trans, eng size,cyl)	MPG		Annual Fuel Cost	GHG Rating	Notes
	City/Hwy	Comb			

BUICK

Verano

A-S6, 2.0L, 4cyl	21/30	24	\$1,550	6	T
M-6, 2.0L, 4cyl	20/31	24	\$1,550	6	T
A-S6, 2.4L, 4cyl	21/32	25	\$1,450	6	Gas
	15/23	18	\$2,700	6	E85

CADILLAC

ATS

A-S6, 2.0L, 4cyl	21/31	24	\$1,550	6	T
M-6, 2.0L, 4cyl	19/30	23	\$1,600	6	T
A-S6, 2.5L, 4cyl	22/33	26	\$1,400	7	
A-S6, 3.6L, 6cyl	19/28	22	\$1,650	5	
A-S6, 3.6L, 6cyl	19/28	22	\$1,650	5	Gas
	14/21	16	\$3,050	6	E85

ATS AWD

A-S6, 2.0L, 4cyl	20/30	24	\$1,550	6	T
A-S6, 3.6L, 6cyl	18/26	21	\$1,750	5	
A-S6, 3.6L, 6cyl	18/26	21	\$1,750	5	Gas
	13/20	16	\$3,050	5	E85

CHEVROLET

Camaro

A-S6, 3.6L, 6cyl	18/27	21	\$1,750	5	
A-6, 3.6L, 6cyl	19/30	22	\$1,650	5	
M-6, 3.6L, 6cyl	17/28	20	\$1,850	5	
A-S6, 6.2L, 8cyl	12/18	14	\$3,000	2	P S Tax
A-S6, 6.2L, 8cyl	15/24	18	\$2,050	4	
M-6, 6.2L, 8cyl	14/19	16	\$2,650	3	P S Tax
M-6, 6.2L, 8cyl	16/24	19	\$1,950	4	

Sonic

A-S6, 1.4L, 4cyl	27/37	31	\$1,200	8	T
M-6, 1.4L, 4cyl	29/40	33	\$1,100	8	T
A-S6, 1.8L, 4cyl	25/35	28	\$1,300	7	
M-5, 1.8L, 4cyl	26/35	30	\$1,200	8	

Volt

AV, 1.4L, 4cyl	See page 28				
----------------	-------------	--	--	--	--

CHRYSLER

200 Convertible

A-6, 2.4L, 4cyl	18/27	21	\$1,750	5	
A-6, 3.6L, 6cyl	19/29	22	\$1,650	5	Gas
	14/21	16	\$3,050	6	E85

FORD

Focus Electric

A-1	110/99	105	\$600	10	EV
------------	---------------	------------	--------------	-----------	-----------

Focus FWD

AM-6, 2.0L, 4cyl	27/38	31	\$1,200	8	
A-S6, 2.0L, 4cyl	27/38	31	\$1,200	8	
M-5, 2.0L, 4cyl	26/36	30	\$1,200	8	
M-6, 2.0L, 4cyl	23/32	26	\$1,400	7	T

Focus FWD FFV

AM-6, 2.0L, 4cyl	27/38	31	\$1,200	8	Gas
	20/28	23	\$2,100	8	E85
A-S6, 2.0L, 4cyl	27/38	31	\$1,200	8	Gas
	20/28	23	\$2,100	8	E85
M-5, 2.0L, 4cyl	26/36	30	\$1,200	8	Gas
	19/26	22	\$2,200	8	E85

Focus SFE FWD FFV

AM-6, 2.0L, 4cyl	28/40	33	\$1,100	8	Gas
	20/28	23	\$2,100	8	E85

HONDA

Civic

A-5, 1.8L, 4cyl	28/39	32	\$1,150	8	
M-5, 1.8L, 4cyl	28/36	31	\$1,200	8	
M-6, 2.4L, 4cyl	22/31	25	\$1,700	6	P

Manufacturer Model Configuration (trans, eng size,cyl)	MPG		Annual Fuel Cost	GHG Rating	Notes
	City/Hwy	Comb			
Civic HF					
A-5, 1.8L, 4cyl	29/41	33	\$1,100	8	
Civic Hybrid					
AV, 1.5L, 4cyl	44/44	44	\$850	10	HEV
Civic Natural Gas					
A-5, 1.8L, 4cyl	27/38	31	\$1,050	10	CNG
Insight					
AV-S7, 1.3L, 4cyl	41/44	42	\$900	10	HEV
AV, 1.3L, 4cyl	41/44	42	\$900	10	HEV
HYUNDAI					
Accent					
A-6, 1.6L, 4cyl	28/37	31	\$1,200	8	
M-6, 1.6L, 4cyl	28/37	32	\$1,150	8	
Veloster					
AM-6, 1.6L, 4cyl	28/37	31	\$1,200	8	
A-6, 1.6L, 4cyl	24/31	28	\$1,300	7	T
M-6, 1.6L, 4cyl	24/35	28	\$1,300	7	T
M-6, 1.6L, 4cyl	27/37	31	\$1,200	8	
KIA					
Forte Koup					
A-6, 2.0L, 4cyl	25/34	29	\$1,250	8	
M-6, 2.0L, 4cyl	24/33	28	\$1,300	7	
A-6, 2.4L, 4cyl	23/31	26	\$1,400	7	
M-6, 2.4L, 4cyl	22/32	26	\$1,400	7	
Rio					
A-6, 1.6L, 4cyl	28/36	31	\$1,200	8	
M-6, 1.6L, 4cyl	29/37	32	\$1,150	8	
Rio Eco					
A-6, 1.6L, 4cyl	30/36	32	\$1,150	8	
LEXUS					
CT 200h					
AV, 1.8L, 4cyl	43/40	42	\$900	10	HEV
MAZDA					
2					
A-4, 1.5L, 4cyl	28/34	30	\$1,200	8	
M-5, 1.5L, 4cyl	29/35	32	\$1,150	8	
3					
A-S5, 2.0L, 4cyl	24/33	27	\$1,350	7	
M-5, 2.0L, 4cyl	25/33	28	\$1,300	7	
A-S5, 2.5L, 4cyl	22/29	25	\$1,450	6	
M-6, 2.5L, 4cyl	20/28	23	\$1,600	6	
3 DI 4-Door					
A-S6, 2.0L, 4cyl	28/40	33	\$1,100	8	
M-6, 2.0L, 4cyl	27/39	31	\$1,200	8	
MERCEDES-BENZ					
C250					
A-7, 1.8L, 4cyl	22/31	25	\$1,700	6	P T
C300 4matic					
A-7, 3.5L, 6cyl	19/28	22	\$1,950	5	P
A-7, 3.5L, 6cyl	19/26	22	\$1,950	5	Gas
	13/18	15	\$3,250	5	E85
C350					
A-7, 3.5L, 6cyl	20/29	24	\$1,750	6	P PZEV
A-7, 3.5L, 6cyl	20/29	23	\$1,850	6	P
A-7, 3.5L, 6cyl	20/29	23	\$1,850	6	Gas
	15/21	17	\$2,850	6	E85
C63 AMG					
A-7, 6.2L, 8cyl	13/19	15	\$2,800	3	P Tax
CL550 4matic					
A-7, 4.7L, 8cyl	15/24	18	\$2,350	4	P T
CL600					
A-5, 5.5L, 12cyl	12/18	14	\$3,000	2	P T Tax
CL63 AMG					
A-7, 5.5L, 8cyl	15/22	18	\$2,350	4	P T

Manufacturer Model Configuration (trans, eng size,cyl)	MPG		Annual Fuel Cost	GHG Rating	Notes
	City/Hwy	Comb			
CL65 AMG					
A-5, 6.0L, 12cyl	12/18	14	\$3,000	2	P T Tax
CLS550					
A-7, 4.7L, 8cyl	17/25	20	\$2,100	5	P T
CLS550 4matic					
A-7, 4.7L, 8cyl	16/25	19	\$2,250	4	P T
CLS63 AMG					
A-7, 5.5L, 8cyl	16/25	19	\$2,250	4	P T
MINI					
Cooper Countryman					
A-S6, 1.6L, 4cyl	25/30	27	\$1,550	7	P
M-6, 1.6L, 4cyl	27/35	30	\$1,400	8	P
Cooper Countryman Coupe					
A-S6, 1.6L, 4cyl	25/30	27	\$1,550	7	P
M-6, 1.6L, 4cyl	27/35	30	\$1,400	8	P
Cooper S Countryman					
A-S6, 1.6L, 4cyl	25/32	28	\$1,500	7	P T
M-6, 1.6L, 4cyl	26/32	29	\$1,450	8	P T
Cooper S Countryman All4					
A-S6, 1.6L, 4cyl	23/30	26	\$1,650	7	P T
M-6, 1.6L, 4cyl	25/31	27	\$1,550	7	P T
Cooper S Countryman Coupe					
A-S6, 1.6L, 4cyl	25/32	28	\$1,500	7	P T
M-6, 1.6L, 4cyl	26/32	29	\$1,450	8	P T
Cooper S Countryman Coupe All4					
A-S6, 1.6L, 4cyl	23/30	26	\$1,650	7	P T
M-6, 1.6L, 4cyl	25/31	27	\$1,550	7	P T
JCW Countryman All4					
A-S6, 1.6L, 4cyl	23/30	26	\$1,650	7	P T
M-6, 1.6L, 4cyl	25/31	27	\$1,550	7	P T
JCW Countryman Coupe All4					
A-S6, 1.6L, 4cyl	23/30	26	\$1,650	7	P T
M-6, 1.6L, 4cyl	25/31	27	\$1,550	7	P T
MITSUBISHI					
Lancer					
AM-6, 2.0L, 4cyl	18/25	20	\$2,100	5	P T
AV-S6, 2.0L, 4cyl	26/34	29	\$1,250	8	
M-5, 2.0L, 4cyl	25/34	28	\$1,300	7	
AV-S6, 2.4L, 4cyl	23/30	26	\$1,400	7	
M-5, 2.4L, 4cyl	22/31	26	\$1,400	7	
Lancer AWD					
AV-S6, 2.4L, 4cyl	22/29	25	\$1,450	6	
Lancer Evolution					
AM-6, 2.0L, 4cyl	17/22	19	\$2,250	4	P T
M-5, 2.0L, 4cyl	17/23	19	\$2,250	4	P T
NISSAN					
Versa					
AV, 1.6L, 4cyl	31/40	35	\$1,050	9	
A-4, 1.6L, 4cyl	26/35	30	\$1,200	8	
M-5, 1.6L, 4cyl	27/36	30	\$1,200	8	
ROLLS-ROYCE					
Phantom Coupe					
A-S8, 6.7L, 12cyl	11/19	14	\$3,000	2	P Tax
Phantom Drophead Coupe					
A-S8, 6.7L, 12cyl	11/19	14	\$3,000	2	P Tax
SCION					
tC					
A-S6, 2.5L, 4cyl	23/31	26	\$1,400	7	
M-6, 2.5L, 4cyl	23/31	26	\$1,400	7	

Manufacturer Model Configuration (trans, eng size,cyl)	MPG		Annual Fuel Cost	GHG Rating	Notes
	City/Hwy	Comb			
SUBARU					
Impreza AWD					
AV, 2.0L, 4cyl	27/36	30	\$1,200	8	
M-5, 2.0L, 4cyl	25/34	28	\$1,300	7	
M-5, 2.5L, 4cyl	19/25	21	\$2,000	5	P T
M-6, 2.5L, 4cyl	17/23	19	\$2,250	4	P T
SUZUKI					
Kizashi					
AV, 2.4L, 4cyl	23/30	26	\$1,400	7	
M-6, 2.4L, 4cyl	20/29	24	\$1,550	6	
Kizashi AWD					
AV, 2.4L, 4cyl	22/29	25	\$1,450	6	
Kizashi S					
M-6, 2.4L, 4cyl	21/31	25	\$1,450	6	
Kizashi S AWD					
AV, 2.4L, 4cyl	23/30	25	\$1,450	6	
SX4 Sedan					
AV, 2.0L, 4cyl	25/32	28	\$1,300	7	
M-6, 2.0L, 4cyl	23/33	26	\$1,400	7	
SX4 Sport					
AV, 2.0L, 4cyl	23/30	26	\$1,400	7	
M-6, 2.0L, 4cyl	23/32	26	\$1,400	7	
TOYOTA					
Corolla					
A-4, 1.8L, 4cyl	26/34	29	\$1,250	8	
M-5, 1.8L, 4cyl	27/34	30	\$1,200	8	
Prius c					
▶ AV, 1.5L, 4cyl	53/46	50	\$750	10	HEV
Yaris					
A-4, 1.5L, 4cyl	30/36	32	\$1,150	8	
M-5, 1.5L, 4cyl	30/37	33	\$1,100	8	
VOLKSWAGEN					
Beetle					
AM-S6, 2.0L, 4cyl	22/30	25	\$1,700	6	P T
M-6, 2.0L, 4cyl	21/30	24	\$1,750	6	P T
A-S6, 2.5L, 5cyl	22/29	25	\$1,450	6	
M-5, 2.5L, 5cyl	22/31	25	\$1,450	6	
AM-S6, 2.0L, 4cyl	29/39	32	\$1,350	7	D T
M-6, 2.0L, 4cyl	28/41	32	\$1,350	7	D T
CC					
AM-S6, 2.0L, 4cyl	22/31	25	\$1,700	6	P T
M-6, 2.0L, 4cyl	21/32	25	\$1,700	6	P T
A-S6, 3.6L, 6cyl	17/27	21	\$2,000	5	P
CC 4motion					
A-S6, 3.6L, 6cyl	17/25	20	\$2,100	5	P
Golf					
A-S6, 2.5L, 5cyl	24/31	26	\$1,400	7	
M-5, 2.5L, 5cyl	23/33	26	\$1,400	7	
AM-S6, 2.0L, 4cyl	30/42	34	\$1,300	8	D T
M-6, 2.0L, 4cyl	30/42	34	\$1,300	8	D T
Golf R					
M-6, 2.0L, 4cyl	19/27	22	\$1,950	5	P T
GTI					
AM-S6, 2.0L, 4cyl	24/33	27	\$1,550	7	P T
M-6, 2.0L, 4cyl	21/31	25	\$1,700	6	P T
Jetta					
AM-S6, 2.0L, 4cyl	24/32	27	\$1,550	7	P T
A-S6, 2.0L, 4cyl	23/29	25	\$1,450	6	
M-5, 2.0L, 4cyl	24/34	28	\$1,300	7	
M-6, 2.0L, 4cyl	22/33	26	\$1,650	7	P T
A-S6, 2.5L, 5cyl	24/31	26	\$1,400	7	
M-5, 2.5L, 5cyl	23/33	26	\$1,400	7	
AM-S6, 2.0L, 4cyl	30/42	34	\$1,300	8	D T
M-6, 2.0L, 4cyl	30/42	34	\$1,300	8	D T

Manufacturer Model Configuration (trans, eng size,cyl)	MPG		Annual Fuel Cost	GHG Rating	Notes
	City/Hwy	Comb			
Jetta Hybrid					
AM-S7, 1.4L, 4cyl	42/48	45	\$950	10	HEV P T
VOLVO					
C30 FWD					
A-S5, 2.5L, 5cyl	21/30	24	\$1,550	6	T
M-6, 2.5L, 5cyl	21/29	24	\$1,550	6	T
S60 AWD					
A-S6, 2.5L, 5cyl	20/29	23	\$1,600	6	T
A-S6, 3.0L, 6cyl	18/25	21	\$1,750	5	T
S60 FWD					
A-S6, 2.5L, 5cyl	21/30	24	\$1,550	6	T

MIDSIZE CARS

ACURA					
TL 2WD					
A-S6, 3.5L, 6cyl	20/29	23	\$1,850	6	P
TL 4WD					
A-S6, 3.7L, 6cyl	18/26	21	\$2,000	5	P
M-6, 3.7L, 6cyl	17/25	20	\$2,100	5	P
AUDI					
A6					
AV-S8, 2.0L, 4cyl	25/33	28	\$1,500	7	P T
A6 quattro					
A-S8, 2.0L, 4cyl	20/30	24	\$1,750	6	P T
A-S8, 3.0L, 6cyl	18/27	22	\$1,950	5	P S
A7 quattro					
A-S8, 3.0L, 6cyl	18/28	21	\$2,000	5	P S
A8					
A-S8, 3.0L, 6cyl	18/28	21	\$2,000	5	P S
A-S8, 4.0L, 8cyl	17/28	21	\$2,000	5	P T
S6					
AM-S7, 4.0L, 8cyl	17/27	20	\$2,100	5	P T
S7					
AM-S7, 4.0L, 8cyl	17/27	20	\$2,100	5	P T
S8					
A-S8, 4.0L, 8cyl	15/26	19	\$2,250	4	P T
BENTLEY					
Continental Flying Spur					
A-S6, 6.0L, 12cyl	11/19	14	\$3,000	2	Gas T Tax
	8/13	10	\$4,850	2	E85
Mulsanne					
A-S8, 6.8L, 8cyl	11/18	13	\$3,250	2	P T Tax
BMW					
528i					
A-S8, 2.0L, 4cyl	24/34	28	\$1,500	7	P T
528i xDrive					
A-S8, 2.0L, 4cyl	22/33	26	\$1,650	7	P T
535i					
A-S8, 3.0L, 6cyl	20/30	24	\$1,750	6	P T
M-6, 3.0L, 6cyl	20/30	23	\$1,850	6	P T
535i xDrive					
A-S8, 3.0L, 6cyl	21/30	24	\$1,750	6	P T
550i					
A-S8, 4.4L, 8cyl	17/25	20	\$2,100	5	P T
M-6, 4.4L, 8cyl	15/22	17	\$2,500	4	P T Tax
550i xDrive					
A-S8, 4.4L, 8cyl	16/24	19	\$2,250	4	P T
ActiveHybrid 5					
A-S8, 3.0L, 6cyl	23/30	26	\$1,650	7	HEV P T
M5					
AM-S7, 4.4L, 8cyl	14/20	16	\$2,650	3	P T Tax
M-6, 4.4L, 8cyl	15/22	17	\$2,500	4	P T Tax

Manufacturer Model Configuration (trans, eng size,cyl)	MPG		Annual Fuel Cost	GHG Rating	Notes
	City/Hwy	Comb			
BUICK					
LaCrosse					
A-S6, 3.6L, 6cyl	17/27	21	\$1,750	5	
A-S6, 3.6L, 6cyl	17/27	21	\$1,750	5	Gas
	13/19	15	\$3,250	5	E85
LaCrosse AWD					
A-S6, 3.6L, 6cyl	17/25	20	\$1,850	5	Gas
	12/18	14	\$3,450	4	E85
LaCrosse eAssist					
A-S6, 2.4L, 4cyl	25/36	29	\$1,250	8	HEV
Regal					
A-S6, 2.0L, 4cyl	19/27	22	\$1,650	5	T
M-6, 2.0L, 4cyl	19/27	22	\$1,650	5	T
A-S6, 2.4L, 4cyl	19/31	23	\$1,600	6	
A-S6, 2.0L, 4cyl	18/29	22	\$1,650	5	Gas T
	13/20	15	\$3,250	5	E85
A-S6, 2.0L, 4cyl	18/29	22	\$1,650	5	Gas T ST
	13/20	15	\$3,250	5	E85
M-6, 2.0L, 4cyl	20/32	24	\$1,550	6	Gas T
	15/22	17	\$2,850	6	E85
A-S6, 2.4L, 4cyl	19/31	23	\$1,600	6	Gas
	15/22	17	\$2,850	6	E85
Regal eAssist					
A-S6, 2.4L, 4cyl	25/36	29	\$1,250	8	HEV
CADILLAC					
CTS					
A-S6, 3.0L, 6cyl	18/27	22	\$1,650	5	
M-6, 3.0L, 6cyl	16/26	19	\$1,950	4	
A-S6, 3.6L, 6cyl	18/27	21	\$1,750	5	
A-S6, 6.2L, 8cyl	12/18	14	\$2,600	2	S Tax
M-6, 6.2L, 8cyl	14/19	16	\$2,650	3	P S Tax
CTS AWD					
A-S6, 3.0L, 6cyl	18/26	21	\$1,750	5	
A-S6, 3.6L, 6cyl	18/27	21	\$1,750	5	
CHEVROLET					
Cruze					
A-S6, 1.4L, 4cyl	26/38	30	\$1,200	8	T
M-6, 1.4L, 4cyl	26/38	30	\$1,200	8	T
A-S6, 1.8L, 4cyl	22/35	27	\$1,350	7	
M-6, 1.8L, 4cyl	25/36	29	\$1,250	8	
Cruze Eco					
A-6, 1.4L, 4cyl	26/39	31	\$1,200	8	T
M-6, 1.4L, 4cyl	28/42	33	\$1,100	8	T
Malibu					
A-S6, 2.0L, 4cyl	21/30	24	\$1,550	6	T
A-S6, 2.5L, 4cyl	22/34	26	\$1,400	7	
Malibu eAssist					
A-S6, 2.4L, 4cyl	25/37	29	\$1,250	8	HEV
Sonic 5					
A-S6, 1.4L, 4cyl	27/37	31	\$1,200	8	T
M-6, 1.4L, 4cyl	29/40	33	\$1,100	8	T
A-S6, 1.8L, 4cyl	25/35	28	\$1,300	7	
M-5, 1.8L, 4cyl	26/35	30	\$1,200	8	
Sonic RS					
A-S6, 1.4L, 4cyl	25/33	28	\$1,300	7	T
M-6, 1.4L, 4cyl	27/34	30	\$1,200	8	T
CHRYSLER					
200					
A-4, 2.4L, 4cyl	21/29	24	\$1,550	6	
A-6, 2.4L, 4cyl	20/31	23	\$1,600	6	
A-6, 3.6L, 6cyl	19/29	22	\$1,650	5	Gas
	14/21	16	\$3,050	6	E85

Manufacturer Model Configuration (trans, eng size,cyl)	MPG		Annual Fuel Cost	GHG Rating	Notes
	City/Hwy	Comb			
DODGE					
Avenger					
A-4, 2.4L, 4cyl	21/29	24	\$1,550	6	
A-6, 2.4L, 4cyl	20/31	23	\$1,600	6	
A-6, 3.6L, 6cyl	19/29	22	\$1,650	5	Gas
	14/21	16	\$3,050	6	E85
Challenger					
A-5, 3.6L, 6cyl	18/27	21	\$1,750	5	
A-5, 5.7L, 8cyl	16/25	19	\$2,100	4	Mid
M-6, 5.7L, 8cyl	15/23	18	\$2,350	4	P
Challenger SRT8					
A-5, 6.4L, 8cyl	14/23	17	\$2,500	4	P Tax
M-6, 6.4L, 8cyl	14/23	17	\$2,500	4	P Tax
Dart					
AM-6, 1.4L, 4cyl	27/37	31	\$1,350	8	P T
M-6, 1.4L, 4cyl	27/39	32	\$1,300	8	P T
A-6, 2.0L, 4cyl	24/34	27	\$1,350	7	
M-6, 2.0L, 4cyl	25/36	29	\$1,250	8	
A-6, 2.4L, 4cyl	21/30	24	\$1,550	6	
M-6, 2.4L, 4cyl	23/33	27	\$1,350	7	
A-6, 2.0L, 4cyl	24/34	27	\$1,350	7	Gas
	17/24	19	\$2,550	7	E85
Dart Aero					
AM-6, 1.4L, 4cyl	28/40	32	\$1,300	8	P T
M-6, 1.4L, 4cyl	28/41	32	\$1,300	8	P T
FERRARI					
FF					
AM-7, 6.3L, 12cyl	11/16	13	\$3,250	2	P Tax PT4WD
AM-7, 6.3L, 12cyl	11/17	13	\$3,250	2	P Tax PT4WD SS
FORD					
C-MAX Energi Plug-in Hybrid					
AV, 2.0L, 4cyl					See page 28
Fusion AWD					
A-S6, 2.0L, 4cyl	22/31	25	\$1,450	6	T
Fusion Energi Plug-in Hybrid					
AV, 2.0L, 4cyl					See page 28
Fusion FWD					
A-S6, 1.6L, 4cyl	23/36	28	\$1,300	7	T
A-S6, 1.6L, 4cyl	24/37	28	\$1,300	7	T
M-6, 1.6L, 4cyl	25/37	29	\$1,250	8	T
A-S6, 2.0L, 4cyl	22/33	26	\$1,400	7	T
A-S6, 2.5L, 4cyl	22/34	26	\$1,400	7	
Fusion Hybrid FWD					
AV, 2.0L, 4cyl	44/41	42	\$900	10	HEV
HONDA					
Accord					
AV-S7, 2.4L, 4cyl	26/35	29	\$1,250	8	
AV, 2.4L, 4cyl	27/36	30	\$1,200	8	
M-6, 2.4L, 4cyl	24/34	28	\$1,300	7	
A-S6, 3.5L, 6cyl	21/32	25	\$1,450	6	
A-6, 3.5L, 6cyl	21/34	25	\$1,450	6	
M-6, 3.5L, 6cyl	18/28	22	\$1,650	5	
HYUNDAI					
Elantra					
A-6, 1.8L, 4cyl	28/38	32	\$1,150	8	
M-6, 1.8L, 4cyl	28/38	32	\$1,150	8	
Elantra Blue					
A-6, 1.8L, 4cyl	28/38	32	\$1,150	8	
Elantra Coupe					
A-6, 1.8L, 4cyl	27/37	31	\$1,200	8	
M-6, 1.8L, 4cyl	28/38	32	\$1,150	8	

Manufacturer Model Configuration (trans, eng size,cyl)	MPG		Annual Fuel Cost	GHG Rating	Notes
	City/Hwy	Comb			
Elantra GT					
A-6, 1.8L, 4cyl	27/37	30	\$1,200	8	
M-6, 1.8L, 4cyl	26/37	30	\$1,200	8	
Sonata Hybrid					
AM-6, 2.4L, 4cyl	36/40	38	\$950	9	HEV
Sonata Hybrid Limited					
AM-6, 2.4L, 4cyl	36/40	37	\$1,000	9	HEV
INFINITI					
G37					
A-S7, 3.7L, 6cyl	19/27	22	\$1,950	5	P
M-6, 3.7L, 6cyl	17/25	20	\$2,100	5	P
G37x					
A-S7, 3.7L, 6cyl	18/25	20	\$2,100	5	P
M35h					
A-S7, 3.5L, 6cyl	27/32	29	\$1,450	8	HEV P
M37					
A-S7, 3.7L, 6cyl	18/26	21	\$2,000	5	P
M37x					
A-S7, 3.7L, 6cyl	17/24	20	\$2,100	5	P
M56					
A-S7, 5.6L, 8cyl	16/24	19	\$2,250	4	P
M56x					
A-S7, 5.6L, 8cyl	16/23	18	\$2,350	4	P
JAGUAR					
XF					
A-S8, 2.0L, 4cyl	19/30	23	\$1,850	6	P T
A-S8, 3.0L, 6cyl	17/28	21	\$2,000	5	P S
A-S8, 5.0L, 8cyl	15/23	18	\$2,350	4	P S
XF AWD					
A-S8, 3.0L, 6cyl	16/26	19	\$2,250	4	P S
XF FFFV					
A-S8, 5.0L, 8cyl	15/23	18	\$2,350	4	Gas S
	11/17	13	\$3,750	4	E85
KIA					
Forte					
A-6, 2.0L, 4cyl	26/36	29	\$1,250	8	
M-6, 2.0L, 4cyl	25/34	29	\$1,250	8	
A-6, 2.4L, 4cyl	23/32	26	\$1,400	7	
M-6, 2.4L, 4cyl	22/32	26	\$1,400	7	
Forte Eco					
A-6, 2.0L, 4cyl	27/37	30	\$1,200	8	
Optima					
A-6, 2.0L, 4cyl	22/34	26	\$1,400	7	T
A-6, 2.4L, 4cyl	24/35	28	\$1,300	7	
M-6, 2.4L, 4cyl	24/35	28	\$1,300	7	
Optima Hybrid					
AM-6, 2.4L, 4cyl	36/40	38	\$950	9	HEV
Optima Hybrid EX					
AM-6, 2.4L, 4cyl	35/39	37	\$1,000	9	HEV
LEXUS					
ES 300h					
AV-S6, 2.5L, 4cyl	40/39	40	\$900	10	HEV
ES 350					
A-S6, 3.5L, 6cyl	21/31	24	\$1,550	6	
GS 350					
A-S6, 3.5L, 6cyl	19/28	23	\$1,850	6	P
GS 350 AWD					
A-S6, 3.5L, 6cyl	19/26	21	\$2,000	5	P
GS 450h					
AV-S6, 3.5L, 6cyl	29/34	31	\$1,350	8	HEV P
LS 460					
A-S8, 4.6L, 8cyl	16/24	19	\$2,250	4	P

Manufacturer Model Configuration (trans, eng size,cyl)	MPG		Annual Fuel Cost	GHG Rating	Notes
	City/Hwy	Comb			
LS 460 AWD					
A-S8, 4.6L, 8cyl	16/23	18	\$2,350	4	P
LS 460 L					
A-S8, 4.6L, 8cyl	16/24	19	\$2,250	4	P
LS 460 L AWD					
A-S8, 4.6L, 8cyl	16/23	18	\$2,350	4	P
LS 600h L					
AV-S8, 5.0L, 8cyl	19/23	20	\$2,100	5	HEV P
LINCOLN					
MKZ AWD					
A-S6, 2.0L, 4cyl	22/31	25	\$1,450	6	T
A-S6, 3.7L, 6cyl	18/26	21	\$1,750	5	
MKZ FWD					
A-S6, 2.0L, 4cyl	22/33	26	\$1,400	7	T
A-S6, 3.7L, 6cyl	19/28	22	\$1,650	5	
MKZ Hybrid FWD					
AV, 2.0L, 4cyl	38/37	38	\$950	9	HEV
MAZDA					
3 DI 5-Door					
A-S6, 2.0L, 4cyl	28/39	32	\$1,150	8	
M-6, 2.0L, 4cyl	27/38	31	\$1,200	8	
6					
A-S5, 2.5L, 4cyl	21/30	25	\$1,450	6	
M-6, 2.5L, 4cyl	21/30	24	\$1,550	6	
A-S6, 3.7L, 6cyl	18/27	21	\$1,750	5	
Speed 3					
M-6, 2.3L, 4cyl	18/25	21	\$2,000	5	P T
MERCEDES-BENZ					
E350					
A-7, 3.5L, 6cyl	19/29	23	\$1,850	6	P PZEV
A-7, 3.5L, 6cyl	20/30	23	\$1,850	6	P
A-7, 3.5L, 6cyl	20/30	23	\$1,850	6	Gas
	14/23	17	\$2,850	6	E85
E350 4matic					
A-7, 3.5L, 6cyl	19/28	22	\$1,950	5	P PZEV
A-7, 3.5L, 6cyl	19/29	22	\$1,950	5	P
E350 4Matic					
A-7, 3.5L, 6cyl	19/29	22	\$1,950	5	Gas
	14/21	16	\$3,050	6	E85
E350 Bluetec					
A-7, 3.0L, 6cyl	22/32	25	\$1,750	5	D T
E400 Hybrid					
A-7, 3.5L, 6cyl	24/30	26	\$1,650	7	HEV P
E550 4matic					
A-7, 4.7L, 8cyl	16/26	20	\$2,100	5	P T
E63 AMG					
A-7, 5.5L, 8cyl	16/24	19	\$2,250	4	P T
NISSAN					
Altima					
AV-S6, 2.5L, 4cyl	27/38	31	\$1,200	8	
AV-S6, 3.5L, 6cyl	22/31	25	\$1,450	6	
Leaf					
▶A-1	129/102	115	\$500	10	EV
Maxima					
AV-S6, 3.5L, 6cyl	19/26	22	\$1,950	5	P
Sentra					
AV, 1.8L, 4cyl	30/39	34	\$1,100	9	
AV, 1.8L, 4cyl	30/39	33	\$1,100	8	
M-6, 1.8L, 4cyl	27/36	30	\$1,200	8	
Sentra FE					
AV, 1.8L, 4cyl	30/40	34	\$1,100	9	

Manufacturer Model Configuration (trans, eng size,cyl)	MPG		Annual Fuel Cost	GHG Rating	Notes
	City/Hwy	Comb			
SUBARU					
Legacy AWD					
AV, 2.5L, 4cyl	24/32	27	\$1,350	7	
M-6, 2.5L, 4cyl	21/28	24	\$1,550	6	
A-S5, 3.6L, 6cyl	18/25	20	\$1,850	5	
TOYOTA					
Avalon					
A-S6, 3.5L, 6cyl	21/31	24	\$1,550	6	Mode
A-S6, 3.5L, 6cyl	21/31	25	\$1,450	6	
Avalon Hybrid					
AV-S6, 2.5L, 4cyl	40/39	40	\$900	10	HEV
Camry					
A-S6, 2.5L, 4cyl	25/35	28	\$1,300	7	
A-S6, 3.5L, 6cyl	21/31	25	\$1,450	6	
Camry Hybrid LE					
AV, 2.5L, 4cyl	43/39	41	\$900	10	HEV
Camry Hybrid XLE					
AV, 2.5L, 4cyl	40/38	40	\$900	10	HEV
Prius					
▶AV, 1.8L, 4cyl	51/48	50	\$750	10	HEV
Prius Plug-in Hybrid					
AV, 1.8L, 4cyl			See page 28		
VOLKSWAGEN					
Passat					
A-S6, 2.5L, 5cyl	22/31	25	\$1,450	6	
M-5, 2.5L, 5cyl	22/32	26	\$1,400	7	
AM-S6, 3.6L, 6cyl	20/28	23	\$1,850	6	P
AM-S6, 2.0L, 4cyl	30/40	34	\$1,300	8	D T
M-6, 2.0L, 4cyl	31/43	35	\$1,250	8	D T
VOLVO					
S80 AWD					
A-S6, 3.0L, 6cyl	18/25	21	\$1,750	5	T
S80 FWD					
A-S6, 3.2L, 6cyl	19/28	23	\$1,600	6	
LARGE CARS					
AUDI					
A8 L					
A-S8, 3.0L, 6cyl	18/28	21	\$2,000	5	P S
A-S8, 4.0L, 8cyl	16/26	19	\$2,250	4	P T
A-S8, 6.3L, 12cyl	13/21	16	\$2,650	3	P Tax
BMW					
535i Gran Turismo					
A-S8, 3.0L, 6cyl	20/30	24	\$1,750	6	P T
535i xDrive Gran Turismo					
A-S8, 3.0L, 6cyl	18/26	21	\$2,000	5	P T
550i Gran Turismo					
A-S8, 4.4L, 8cyl	16/24	19	\$2,250	4	P T
550i xDrive Gran Turismo					
A-S8, 4.4L, 8cyl	16/24	19	\$2,250	4	P T
740i					
A-S8, 3.0L, 6cyl	19/28	22	\$1,950	5	P T
740Li					
A-S8, 3.0L, 6cyl	19/28	22	\$1,950	5	P T
740Li xDrive					
A-S8, 3.0L, 6cyl	19/28	22	\$1,950	5	P T
750i					
A-S8, 4.4L, 8cyl	17/25	19	\$2,250	4	P T
750i xDrive					
A-S8, 4.4L, 8cyl	16/24	19	\$2,250	4	P T
750Li					
A-S8, 4.4L, 8cyl	16/24	19	\$2,250	4	P T

Manufacturer Model Configuration (trans, eng size,cyl)	MPG		Annual Fuel Cost	GHG Rating	Notes
	City/Hwy	Comb			
750Li xDrive					
A-S8, 4.4L, 8cyl	16/24	19	\$2,250	4	P T
760Li					
A-S8, 6.0L, 12cyl	13/20	15	\$2,800	3	P T Tax
ActiveHybrid 7L					
A-S8, 3.0L, 6cyl	22/30	25	\$1,700	6	HEV P T
Alpina B7 LWB					
A-S8, 4.4L, 8cyl	16/24	19	\$2,250	4	P T
Alpina B7 LWB xDrive					
A-S8, 4.4L, 8cyl	16/24	19	\$2,250	4	P T
Alpina B7 SWB					
A-S8, 4.4L, 8cyl	16/24	19	\$2,250	4	P T
Alpina B7 SWB xDrive					
A-S8, 4.4L, 8cyl	16/24	19	\$2,250	4	P T
X1 sDrive28i					
A-S8, 2.0L, 4cyl	24/34	28	\$1,500	7	P T
X1 xDrive28i					
A-S8, 2.0L, 4cyl	22/33	26	\$1,650	7	P T
X1 xDrive35i					
A-S6, 3.0L, 6cyl	18/27	21	\$2,000	5	P T
CADILLAC					
XTS					
A-S6, 3.6L, 6cyl	17/28	21	\$1,750	5	
XTS AWD					
A-S6, 3.6L, 6cyl	17/26	20	\$1,850	5	
CHEVROLET					
Impala					
A-6, 3.6L, 6cyl	18/29	22	\$1,650	5	
A-6, 3.6L, 6cyl	18/30	22	\$1,650	5	Gas
A-6, 3.6L, 6cyl	13/22	16	\$3,050	6	E85
CHRYSLER					
300					
A-8, 3.6L, 6cyl	19/31	23	\$1,600	6	
A-5, 5.7L, 8cyl	16/25	19	\$2,100	4	Mid
A-8, 3.6L, 6cyl	19/31	23	\$1,600	6	Gas
A-8, 3.6L, 6cyl	14/23	17	\$2,850	6	E85
300 AWD					
A-8, 3.6L, 6cyl	18/27	21	\$1,750	5	
A-5, 5.7L, 8cyl	15/23	18	\$2,200	4	Mid
A-8, 3.6L, 6cyl	18/27	21	\$1,750	5	Gas
A-8, 3.6L, 6cyl	14/20	16	\$3,050	5	E85
300 SRT8					
A-5, 6.4L, 8cyl	14/23	17	\$2,500	4	P Tax
DODGE					
Charger					
A-5, 3.6L, 6cyl	18/27	21	\$1,750	5	
A-8, 3.6L, 6cyl	19/31	23	\$1,600	6	
A-5, 5.7L, 8cyl	16/25	19	\$2,100	4	Mid
A-5, 3.6L, 6cyl	18/27	21	\$1,750	5	Gas
A-5, 3.6L, 6cyl	13/19	15	\$3,250	5	E85
A-8, 3.6L, 6cyl	19/31	23	\$1,600	6	Gas
A-8, 3.6L, 6cyl	14/23	17	\$2,850	6	E85
Charger AWD					
A-8, 3.6L, 6cyl	18/27	21	\$1,750	5	
A-5, 5.7L, 8cyl	15/23	18	\$2,200	4	Mid
A-8, 3.6L, 6cyl	18/27	21	\$1,750	5	Gas
A-8, 3.6L, 6cyl	14/20	16	\$3,050	5	E85
Charger SRT8					
A-5, 6.4L, 8cyl	14/23	17	\$2,500	4	P Tax
FORD					
C-MAX Hybrid FWD					
▶AV, 2.0L, 4cyl	42/37	40	\$900	10	HEV

Manufacturer Model Configuration (trans, eng size,cyl)	MPG		Annual Fuel Cost	GHG Rating	Notes
	City/Hwy	Comb			
Taurus AWD					
A-S6, 3.5L, 6cyl	17/25	20	\$1,850	5	T
A-S6, 3.5L, 6cyl	18/26	21	\$1,750	5	
Taurus AWD FFV					
A-S6, 3.5L, 6cyl	18/26	21	\$1,750	5	Gas
	13/19	16	\$3,050	5	E85
Taurus FWD					
A-S6, 2.0L, 4cyl	22/32	26	\$1,400	7	T
A-S6, 3.5L, 6cyl	19/29	23	\$1,600	6	
Taurus FWD FFV					
A-S6, 3.5L, 6cyl	19/29	23	\$1,600	6	Gas
	13/21	16	\$3,050	5	E85
HYUNDAI					
Azera					
A-6, 3.3L, 6cyl	20/29	23	\$1,600	6	
Equus					
A-8, 5.0L, 8cyl	15/23	18	\$2,350	4	P
Genesis					
A-8, 3.8L, 6cyl	18/28	22	\$1,650	5	
Genesis R-Spec					
A-8, 5.0L, 8cyl	16/25	18	\$2,350	4	P
Sonata					
A-6, 2.0L, 4cyl	22/34	26	\$1,400	7	T
A-6, 2.4L, 4cyl	24/35	28	\$1,300	7	
M-6, 2.4L, 4cyl	24/35	28	\$1,300	7	
JAGUAR					
XJ					
A-S8, 3.0L, 6cyl	18/27	21	\$2,000	5	P S
A-S8, 5.0L, 8cyl	15/23	18	\$2,350	4	P S
XJ AWD					
A-S8, 3.0L, 6cyl	16/24	19	\$2,250	4	P S
XJ FFV					
A-S8, 5.0L, 8cyl	15/23	18	\$2,350	4	Gas S
	11/17	13	\$3,750	4	E85
XJ LWB					
A-S8, 3.0L, 6cyl	17/27	20	\$2,100	5	P S
A-S8, 5.0L, 8cyl	15/23	18	\$2,350	4	P S
A-S8, 5.0L, 8cyl	16/25	19	\$2,250	4	P
XJ LWB AWD					
A-S8, 3.0L, 6cyl	16/24	19	\$2,250	4	P S
XJL FFV					
A-S8, 5.0L, 8cyl	15/23	18	\$2,350	4	Gas S
	11/17	13	\$3,750	4	E85
A-S8, 5.0L, 8cyl	16/25	19	\$2,250	4	Gas
	11/18	13	\$3,750	4	E85
LINCOLN					
MKS AWD					
A-S6, 3.5L, 6cyl	17/25	20	\$1,850	5	T
A-S6, 3.7L, 6cyl	18/26	21	\$1,750	5	
MKS FWD					
A-S6, 3.7L, 6cyl	18/27	21	\$1,750	5	
MASERATI					
Quattroporte					
A-6, 4.7L, 8cyl	12/18	14	\$3,000	2	P Tax
MERCEDES-BENZ					
S350 Bluetec 4matic					
A-7, 3.0L, 6cyl	21/31	25	\$1,750	5	D T
S400 Hybrid					
A-7, 3.5L, 6cyl	19/25	21	\$2,000	5	HEV P
S550					
A-7, 4.7L, 8cyl	15/25	19	\$2,250	4	P T

Manufacturer Model Configuration (trans, eng size,cyl)	MPG		Annual Fuel Cost	GHG Rating	Notes
	City/Hwy	Comb			
S550 4matic					
A-7, 4.7L, 8cyl	15/24	18	\$2,350	4	P T
S600					
A-5, 5.5L, 12cyl	12/19	14	\$3,000	2	P T Tax
S63 AMG					
A-7, 5.5L, 8cyl	15/23	18	\$2,350	4	P T
S65 AMG					
A-5, 6.0L, 12cyl	12/19	14	\$3,000	2	P T Tax
PORSCHE					
Panamera					
A-7, 3.6L, 6cyl	18/27	21	\$2,000	5	P
Panamera 4					
A-7, 3.6L, 6cyl	18/26	21	\$2,000	5	P
Panamera 4S					
A-7, 4.8L, 8cyl	16/24	19	\$2,250	4	P
Panamera GTS					
A-7, 4.8L, 8cyl	16/23	19	\$2,250	4	P
Panamera S					
A-7, 4.8L, 8cyl	16/24	19	\$2,250	4	P
Panamera S Hybrid					
A-8, 3.0L, 6cyl	22/30	25	\$1,700	6	HEV P S
Panamera Turbo					
A-7, 4.8L, 8cyl	15/23	18	\$2,350	4	P T
Panamera Turbo S					
A-7, 4.8L, 8cyl	15/23	18	\$2,350	4	P T
ROLLS-ROYCE					
Ghost					
A-S8, 6.6L, 12cyl	13/21	15	\$2,800	3	P T Tax
Ghost EWB					
A-S8, 6.6L, 12cyl	13/21	15	\$2,800	3	P T Tax
Phantom					
A-S8, 6.7L, 12cyl	11/19	14	\$3,000	2	P Tax
Phantom EWB					
A-S8, 6.7L, 12cyl	11/19	14	\$3,000	2	P Tax
TESLA					
Model S (40 kW-hr battery pack)					
A-1	93/96	94	\$650	10	EV
Model S (60 kW-hr battery pack)					
▶A-1	94/97	95	\$650	10	EV
Model S (85 kW-hr battery pack)					
A-1	88/90	89	\$700	10	EV
SMALL STATION WAGONS					
ACURA					
TSX Wagon					
A-S5, 2.4L, 4cyl	22/30	25	\$1,700	6	P
AUDI					
A3					
AM-S6, 2.0L, 4cyl	21/28	24	\$1,750	6	P T
M-6, 2.0L, 4cyl	21/30	24	\$1,750	6	P T
▶AM-S6, 2.0L, 4cyl	30/42	34	\$1,300	8	D T
A3 quattro					
AM-S6, 2.0L, 4cyl	21/28	24	\$1,750	6	P T
allroad quattro					
A-S8, 2.0L, 4cyl	20/27	23	\$1,850	6	P T
A-S8, 2.0L, 4cyl	20/27	23	\$1,850	6	Gas T
	14/18	15	\$3,250	5	E85

Manufacturer Model Configuration (trans, eng size,cyl)	MPG		Annual Fuel Cost	GHG Rating	Notes
	City/Hwy	Comb			
CADILLAC					
CTS Wagon					
A-S6, 3.0L, 6cyl	18/26	21	\$1,750	5	
A-S6, 3.6L, 6cyl	18/26	21	\$1,750	5	
A-S6, 6.2L, 8cyl	12/18	14	\$3,000	2	P S Tax
M-6, 6.2L, 8cyl	14/19	16	\$2,650	3	P S Tax
CTS Wagon AWD					
A-S6, 3.0L, 6cyl	18/26	21	\$1,750	5	
A-S6, 3.6L, 6cyl	18/26	21	\$1,750	5	
HONDA					
Fit					
A-S5, 1.5L, 4cyl	27/33	30	\$1,200	8	
A-5, 1.5L, 4cyl	28/35	31	\$1,200	8	
M-5, 1.5L, 4cyl	27/33	29	\$1,250	8	
Fit EV					
▶A-1	132/105	118	\$500	10	EV
INFINITI					
EX37					
A-S7, 3.7L, 6cyl	17/25	20	\$2,100	5	P
EX37 AWD					
A-S7, 3.7L, 6cyl	17/24	20	\$2,100	5	P
KIA					
Soul					
A-6, 1.6L, 4cyl	25/30	27	\$1,350	7	
M-6, 1.6L, 4cyl	25/30	27	\$1,350	7	
A-6, 2.0L, 4cyl	23/28	25	\$1,450	6	
M-6, 2.0L, 4cyl	24/29	26	\$1,400	7	
Soul Eco					
A-6, 1.6L, 4cyl	26/31	28	\$1,300	7	
A-6, 2.0L, 4cyl	24/29	26	\$1,400	7	
MITSUBISHI					
Lancer Sportback					
AV-S6, 2.0L, 4cyl	24/32	27	\$1,350	7	
AV-S6, 2.4L, 4cyl	22/29	25	\$1,450	6	
NISSAN					
Cube					
AV, 1.8L, 4cyl	27/31	28	\$1,300	7	
M-6, 1.8L, 4cyl	25/30	27	\$1,350	7	
Juke					
AV-S6, 1.6L, 4cyl	27/32	29	\$1,450	8	P T
M-6, 1.6L, 4cyl	25/31	27	\$1,550	7	P T
Juke AWD					
AV-S6, 1.6L, 4cyl	25/30	27	\$1,550	7	P T
SCION					
xB					
A-S4, 2.4L, 4cyl	22/28	24	\$1,550	6	
M-5, 2.4L, 4cyl	22/28	24	\$1,550	6	
SUBARU					
Impreza Wagon AWD					
AV, 2.0L, 4cyl	27/36	30	\$1,200	8	
M-5, 2.0L, 4cyl	25/33	28	\$1,300	7	
M-5, 2.5L, 4cyl	19/25	21	\$2,000	5	P T
M-6, 2.5L, 4cyl	17/23	19	\$2,250	4	P T
TOYOTA					
Matrix					
A-4, 1.8L, 4cyl	25/32	28	\$1,300	7	
M-5, 1.8L, 4cyl	26/32	29	\$1,250	8	
A-S5, 2.4L, 4cyl	21/29	24	\$1,550	6	
A-4, 2.4L, 4cyl	20/26	22	\$1,650	5	
M-5, 2.4L, 4cyl	21/28	24	\$1,550	6	

Manufacturer Model Configuration (trans, eng size,cyl)	MPG		Annual Fuel Cost	GHG Rating	Notes
	City/Hwy	Comb			
VOLKSWAGEN					
Jetta SportWagen					
A-S6, 2.5L, 5cyl	24/31	26	\$1,400	7	
M-5, 2.5L, 5cyl	23/33	26	\$1,400	7	
AM-S6, 2.0L, 4cyl	29/39	33	\$1,350	7	D T
▶M-6, 2.0L, 4cyl	30/42	34	\$1,300	8	D T

MIDSIZE STATION WAGONS

MERCEDES-BENZ

E350 4matic (wagon)

A-7, 3.5L, 6cyl	19/27	22	\$1,950	5	P
-----------------	-------	----	---------	---	---

E63 AMG (wagon)

A-7, 5.5L, 8cyl	15/23	18	\$2,350	4	P T
-----------------	-------	----	---------	---	-----

TOYOTA

Prius v

▶AV, 1.8L, 4cyl	44/40	42	\$900	10	HEV
-----------------	-------	----	-------	----	-----

SMALL PICKUP TRUCKS 2WD

NISSAN

Frontier 2WD

A-5, 2.5L, 4cyl	17/23	19	\$1,950	4	
M-5, 2.5L, 4cyl	19/23	21	\$1,750	5	
A-5, 4.0L, 6cyl	16/22	18	\$2,050	4	
M-6, 4.0L, 6cyl	16/22	19	\$1,950	4	

TOYOTA

Tacoma 2WD

A-4, 2.7L, 4cyl	19/24	21	\$1,750	5	
▶M-5, 2.7L, 4cyl	21/25	23	\$1,600	6	
A-5, 4.0L, 6cyl	17/21	19	\$1,950	4	
M-6, 4.0L, 6cyl	16/21	18	\$2,050	4	

SMALL PICKUP TRUCKS 4WD

NISSAN

Frontier 4WD

A-5, 4.0L, 6cyl	15/21	17	\$2,150	4	
M-6, 4.0L, 6cyl	16/21	18	\$2,050	4	

TOYOTA

Tacoma 4WD

A-4, 2.7L, 4cyl	18/21	19	\$1,950	4	PT4WD
M-5, 2.7L, 4cyl	18/21	19	\$1,950	4	PT4WD
A-5, 4.0L, 6cyl	16/21	18	\$2,050	4	PT4WD
M-6, 4.0L, 6cyl	16/19	17	\$2,150	4	PT4WD

STANDARD PICKUP TRUCKS 2WD

CHEVROLET

Silverado 15 Hybrid 2WD

▶AV, 6.0L, 8cyl	20/23	21	\$1,750	5	HEV
-----------------	-------	----	---------	---	-----

Silverado C15 2WD

A-4, 4.3L, 6cyl	15/20	17	\$2,150	4	
A-4, 4.8L, 8cyl	14/19	16	\$2,300	3	Gas
	10/14	12	\$4,050	3	E85
A-6, 5.3L, 8cyl	15/21	17	\$2,150	4	Gas
	11/16	13	\$3,750	4	E85
A-6, 6.2L, 8cyl	13/18	14	\$2,600	2	Gas
	9/13	11	\$4,400	3	E85

Silverado C15 XFE 2WD

A-6, 5.3L, 8cyl	15/22	18	\$2,050	4	Gas
	11/16	13	\$3,750	4	E85

Manufacturer Model Configuration (trans, eng size,cyl)	MPG		Annual Fuel Cost	GHG Rating	Notes
	City/Hwy	Comb			

FORD

F150 Pickup 2WD

A-S6, 3.5L, 6cyl	16/22	18	\$2,050	4	T
A-6, 3.5L, 6cyl	16/22	18	\$2,050	4	T
A-S6, 6.2L, 8cyl	13/18	15	\$2,450	3	

F150 Pickup 2WD FFV

A-S6, 3.7L, 6cyl	17/23	19	\$1,950	4	Gas
	12/17	14	\$3,450	4	E85
A-6, 3.7L, 6cyl	17/23	19	\$1,950	4	Gas
	12/17	14	\$3,450	4	E85
A-S6, 5.0L, 8cyl	15/21	17	\$2,150	4	Gas
	11/15	13	\$3,750	4	E85
A-6, 5.0L, 8cyl	15/21	17	\$2,150	4	Gas
	11/15	13	\$3,750	4	E85

GMC

Sierra 15 Hybrid 2WD

▶AV, 6.0L, 8cyl	20/23	21	\$1,750	5	HEV
-----------------	-------	----	---------	---	-----

Sierra C15 2WD

A-4, 4.3L, 6cyl	15/20	17	\$2,150	4	
A-4, 4.8L, 8cyl	14/19	16	\$2,300	3	Gas
	10/14	12	\$4,050	3	E85
A-6, 5.3L, 8cyl	15/21	17	\$2,150	4	Gas
	11/16	13	\$3,750	4	E85
A-6, 6.2L, 8cyl	13/18	14	\$2,600	2	Gas
	9/13	11	\$4,400	3	E85

Sierra C15 XFE 2WD

A-6, 5.3L, 8cyl	15/22	18	\$2,050	4	Gas
	11/16	13	\$3,750	4	E85

NISSAN

Titan 2WD

A-5, 5.6L, 8cyl	13/18	15	\$2,450	3	
A-5, 5.6L, 8cyl	13/18	15	\$2,450	3	Gas
	9/13	11	\$4,400	3	E85

RAM

1500 2WD

A-8, 3.6L, 6cyl	17/25	20	\$1,850	5	
A-6, 5.7L, 8cyl	14/20	16	\$2,500	3	Mid
A-8, 5.7L, 8cyl	15/22	17	\$2,350	4	Mid
A-8, 3.6L, 6cyl	17/25	20	\$1,850	5	Gas
	12/17	14	\$3,450	5	E85
A-6, 4.7L, 8cyl	14/20	16	\$2,300	3	Gas
	10/12	11	\$4,400	3	E85

1500 HFE 2WD

▶A-8, 3.6L, 6cyl	18/25	21	\$1,750	5	
------------------	-------	----	---------	---	--

TOYOTA

Tundra 2WD

A-S5, 4.0L, 6cyl	16/20	17	\$2,150	4	
A-S6, 4.6L, 8cyl	15/20	17	\$2,150	4	
A-S6, 5.7L, 8cyl	13/18	15	\$2,450	3	

STANDARD PICKUP TRUCKS 4WD

CHEVROLET

Silverado 15 Hybrid 4WD

▶AV, 6.0L, 8cyl	20/23	21	\$1,750	5	HEV
-----------------	-------	----	---------	---	-----

Silverado K15 4WD

A-4, 4.3L, 6cyl	14/18	15	\$2,450	3	
A-4, 4.8L, 8cyl	13/18	15	\$2,450	3	Gas
	10/13	11	\$4,400	3	E85
A-6, 5.3L, 8cyl	15/21	17	\$2,150	4	Gas
	11/16	13	\$3,750	4	E85
A-6, 6.2L, 8cyl	12/18	14	\$2,600	2	Gas
	9/13	10	\$4,850	2	E85

Manufacturer Model Configuration (trans, eng size,cyl)	MPG		Annual Fuel Cost	GHG Rating	Notes
	City/Hwy	Comb			

FORD

F150 Pickup 4WD

A-S6, 3.5L, 6cyl	15/21	17	\$2,150	4	T PT4WD
A-6, 3.5L, 6cyl	15/21	17	\$2,150	4	T PT4WD
A-S6, 6.2L, 8cyl	12/16	13	\$2,850	2	PT4WD

F150 Pickup 4WD FFV

A-S6, 3.7L, 6cyl	16/21	18	\$2,050	4	Gas PT4WD
	11/15	13	\$3,750	4	E85
A-6, 3.7L, 6cyl	16/21	18	\$2,050	4	Gas PT4WD
	11/15	13	\$3,750	4	E85
A-S6, 5.0L, 8cyl	14/19	16	\$2,300	3	Gas PT4WD
	10/14	12	\$4,050	3	E85
A-6, 5.0L, 8cyl	14/19	16	\$2,300	3	Gas PT4WD
	10/14	12	\$4,050	3	E85

F150 Raptor Pickup 4WD

A-S6, 6.2L, 8cyl	11/16	13	\$2,850	2	PT4WD
------------------	-------	----	---------	---	-------

GMC

Sierra 15 Hybrid 4WD

▶AV, 6.0L, 8cyl	20/23	21	\$1,750	5	HEV
-----------------	-------	----	---------	---	-----

Sierra K15 4WD

A-4, 4.3L, 6cyl	14/18	15	\$2,450	3	
A-4, 4.8L, 8cyl	13/18	15	\$2,450	3	Gas
	10/13	11	\$4,400	3	E85
A-6, 5.3L, 8cyl	15/21	17	\$2,150	4	Gas
	11/16	13	\$3,750	4	E85
A-6, 6.2L, 8cyl	12/18	14	\$2,600	2	Gas
	9/13	10	\$4,850	2	E85

Sierra K15 AWD

A-6, 6.2L, 8cyl	12/18	14	\$2,600	2	Gas
	9/13	10	\$4,850	2	E85

HONDA

Ridgeline Truck 4WD

A-5, 3.5L, 6cyl	15/21	17	\$2,150	4	
-----------------	-------	----	---------	---	--

NISSAN

Titan 4WD

A-5, 5.6L, 8cyl	12/17	14	\$2,600	2	
A-5, 5.6L, 8cyl	12/17	14	\$2,600	2	Gas
	9/12	10	\$4,850	2	E85

RAM

1500 4WD

A-6, 5.7L, 8cyl	13/19	15	\$2,650	3	Mid
A-8, 5.7L, 8cyl	15/21	17	\$2,350	4	Mid
A-8, 3.6L, 6cyl	16/23	19	\$1,950	4	Gas
	11/16	13	\$3,750	4	E85
A-6, 4.7L, 8cyl	14/19	16	\$2,300	3	Gas
	10/12	11	\$4,400	3	E85

TOYOTA

Tundra 4WD

A-S6, 4.6L, 8cyl	14/19	16	\$2,300	3	PT4WD
A-S6, 5.7L, 8cyl	13/17	15	\$2,450	3	PT4WD

Tundra 4WD FFV

A-S6, 5.7L, 8cyl	13/18	15	\$2,450	3	Gas PT4WD
	9/12	11	\$4,400	3	E85

VANS, CARGO TYPE

CHEVROLET

Express 1500 2WD Cargo

▶A-4, 4.3L, 6cyl	15/20	17	\$2,150	4	
A-4, 5.3L, 8cyl	13/18	15	\$2,450	3	Gas
	10/13	11	\$4,400	3	E85

Manufacturer Model Configuration (trans, eng size,cyl)	MPG		Annual Fuel Cost	GHG Rating	Notes
	City/Hwy	Comb			
Express 1500 2WD Conversion Cargo					
A-4, 5.3L, 8cyl	13/17	14	\$2,600	2	Gas
	10/13	11	\$4,400	3	E85
Express 1500 AWD Cargo					
A-4, 5.3L, 8cyl	13/17	14	\$2,600	2	Gas
	9/12	10	\$4,850	2	E85
Express 1500 AWD Conversion Cargo					
A-4, 5.3L, 8cyl	13/17	14	\$2,600	2	Gas
	9/12	10	\$4,850	2	E85
Express 2500 2WD Conversion Cargo					
A-6, 6.0L, 8cyl	10/15	12	\$3,050	1	Gas
	7/11	9	\$5,400	1	E85

FORD

E150 Van FFV					
A-4, 4.6L, 8cyl	13/17	15	\$2,450	3	Gas
	9/12	10	\$4,850	2	E85
A-4, 5.4L, 8cyl	12/16	14	\$2,600	2	Gas
	9/12	10	\$4,850	2	E85
E250 Van FFV					
A-4, 4.6L, 8cyl	13/17	15	\$2,450	3	Gas
	9/12	10	\$4,850	2	E85
A-4, 5.4L, 8cyl	12/16	14	\$2,600	2	Gas
	9/12	10	\$4,850	2	E85
E350 Van					
A-5, 6.8L, 10cyl	10/14	12	\$3,050	1	
E350 Van FFV					
A-4, 5.4L, 8cyl	12/16	13	\$2,850	2	Gas
	9/12	10	\$4,850	2	E85

GMC

Savana 1500 2WD Conversion (cargo)					
A-4, 5.3L, 8cyl	13/17	14	\$2,600	2	Gas
	10/13	11	\$4,400	3	E85
Savana 1500 AWD (cargo)					
A-4, 5.3L, 8cyl	13/17	14	\$2,600	2	Gas
	9/12	10	\$4,850	2	E85
Savana 1500 AWD Conversion (cargo)					
A-4, 5.3L, 8cyl	13/17	14	\$2,600	2	Gas
	9/12	10	\$4,850	2	E85
Savana 1500 2WD (cargo)					
▶ A-4, 4.3L, 6cyl	15/20	17	\$2,150	4	
A-4, 5.3L, 8cyl	13/18	15	\$2,450	3	Gas
	10/13	11	\$4,400	3	E85
Savana 2500 2WD Conversion (cargo)					
A-6, 6.0L, 8cyl	10/15	12	\$3,050	1	Gas
	7/11	9	\$5,400	1	E85

NISSAN

NV200 Cargo Van					
AV, 2.0L, 4cyl	24/25	24	\$1,550	6	

VANS, PASSENGER TYPE

CHEVROLET

Express 1500 2WD Passenger					
▶ A-4, 5.3L, 8cyl	13/17	14	\$2,600	2	Gas
	10/13	11	\$4,400	3	E85
Express 1500 AWD Passenger					
▶ A-4, 5.3L, 8cyl	13/17	14	\$2,600	2	Gas
	9/12	10	\$4,850	2	E85
Express 2500 2WD Passenger					
A-6, 4.8L, 8cyl	11/17	13	\$2,850	2	Gas
	8/12	10	\$4,850	2	E85
A-6, 6.0L, 8cyl	11/16	13	\$2,850	2	Gas
	8/11	9	\$5,400	1	E85

Manufacturer Model Configuration (trans, eng size,cyl)	MPG		Annual Fuel Cost	GHG Rating	Notes
	City/Hwy	Comb			
Express 3500 2WD Passenger					
A-6, 4.8L, 8cyl	11/17	13	\$2,850	2	Gas
	8/12	10	\$4,850	2	E85
A-6, 6.0L, 8cyl	11/16	12	\$3,050	1	Gas
	8/11	9	\$5,400	1	E85

FORD

E150 Wagon FFV					
▶ A-4, 4.6L, 8cyl	13/16	14	\$2,600	2	Gas
	9/12	10	\$4,850	2	E85
A-4, 5.4L, 8cyl	12/16	13	\$2,850	2	Gas
	9/12	10	\$4,850	2	E85

E350 Wagon

A-5, 6.8L, 10cyl	10/13	11	\$3,350	1	
------------------	-------	----	---------	---	--

E350 Wagon FFV

A-4, 5.4L, 8cyl	11/15	13	\$2,850	2	Gas
	9/11	10	\$4,850	2	E85

GMC

Savana 1500 2WD (Passenger)					
▶ A-4, 5.3L, 8cyl	13/17	14	\$2,600	2	Gas
	10/13	11	\$4,400	3	E85
Savana 1500 AWD (Passenger)					
▶ A-4, 5.3L, 8cyl	13/17	14	\$2,600	2	Gas
	9/12	10	\$4,850	2	E85

Savana 2500 2WD (Passenger)

A-6, 4.8L, 8cyl	11/17	13	\$2,850	2	Gas
	8/12	10	\$4,850	2	E85
A-6, 6.0L, 8cyl	11/16	13	\$2,850	2	Gas
	8/11	9	\$5,400	1	E85

Savana 3500 2WD (Passenger)

A-6, 4.8L, 8cyl	11/17	13	\$2,850	2	Gas
	8/12	10	\$4,850	2	E85
A-6, 6.0L, 8cyl	11/16	12	\$3,050	1	Gas
	8/11	9	\$5,400	1	E85

SPECIAL PURPOSE VEHICLES 2WD

CADILLAC

XTS Hearse					
A-S6, 3.6L, 6cyl	15/21	17	\$2,150	4	Tax
XTS Limo					
A-S6, 3.6L, 6cyl	15/21	17	\$2,150	4	Tax

FORD

Transit Connect Van					
A-4, 2.0L, 4cyl	21/27	23	\$1,600	6	
Transit Connect Wagon FWD					
A-4, 2.0L, 4cyl	22/27	24	\$1,550	6	

LINCOLN

MKT Livery FWD					
A-S6, 2.0L, 4cyl	20/28	23	\$1,600	6	T

VPG

MV-1					
A-4, 4.6L, 8cyl	13/18	15	\$2,450	3	

SPECIAL PURPOSE VEHICLES 4WD

LINCOLN

MKT Livery AWD					
A-6, 3.7L, 6cyl	17/24	19	\$1,950	4	

MINIVANS 2WD

CHRYSLER

Town and Country					
A-6, 3.6L, 6cyl	17/25	20	\$1,850	5	Gas
	12/18	14	\$3,450	4	E85

Manufacturer Model Configuration (trans, eng size,cyl)	MPG		Annual Fuel Cost	GHG Rating	Notes
	City/Hwy	Comb			
DODGE					
Grand Caravan					
A-6, 3.6L, 6cyl	17/25	20	\$1,850	5	
A-6, 3.6L, 6cyl	17/25	20	\$1,850	5	Gas
	12/18	14	\$3,450	5	E85

HONDA					
Odyssey					
A-5, 3.5L, 6cyl	18/27	21	\$1,750	5	
A-6, 3.5L, 6cyl	19/28	22	\$1,650	5	

MAZDA					
5					
▶A-S5, 2.5L, 4cyl	22/28	24	\$1,550	6	
▶M-6, 2.5L, 4cyl	21/28	24	\$1,550	6	

NISSAN					
Quest					
AV, 3.5L, 6cyl	19/25	21	\$1,750	5	

RAM					
C/V					
A-6, 3.6L, 6cyl	17/25	20	\$1,850	5	Gas
	12/18	14	\$3,450	5	E85

TOYOTA					
Sienna 2WD					
A-S6, 2.7L, 4cyl	19/24	21	\$1,750	5	
A-S6, 3.5L, 6cyl	18/25	21	\$1,750	5	

VOLKSWAGEN					
Routan					
A-6, 3.6L, 6cyl	17/25	20	\$1,850	5	Gas
	12/18	14	\$3,450	4	E85

MINIVANS 4WD

TOYOTA					
Sienna AWD					
A-S6, 3.5L, 6cyl	16/23	19	\$1,950	4	

SMALL SPORT UTILITY VEHICLES 2WD

ACURA					
RDX 2WD					
A-S6, 3.5L, 6cyl	20/28	23	\$1,850	6	P

BUICK					
Encore					
A-S6, 1.4L, 4cyl	25/33	28	\$1,300	7	T

BYD					
e6					
A-1	61/65	63	\$950	10	EV

CHEVROLET					
Captiva FWD					
A-6, 2.4L, 4cyl	20/28	23	\$1,600	6	Gas
	15/22	18	\$2,700	6	E85
A-6, 3.0L, 6cyl	17/24	19	\$1,950	4	Gas
	12/17	14	\$3,450	4	E85

Equinox FWD					
A-6, 2.4L, 4cyl	22/32	26	\$1,400	7	
A-6, 3.6L, 6cyl	17/24	20	\$1,850	5	
A-6, 2.4L, 4cyl	22/32	26	\$1,400	7	Gas
	15/22	18	\$2,700	6	E85
A-6, 3.6L, 6cyl	17/24	20	\$1,850	5	Gas
	13/22	16	\$3,050	6	E85

Manufacturer Model Configuration (trans, eng size,cyl)	MPG		Annual Fuel Cost	GHG Rating	Notes
	City/Hwy	Comb			
DODGE					
Journey FWD					
A-4, 2.4L, 4cyl	19/26	21	\$1,750	5	
A-6, 3.6L, 6cyl	17/25	20	\$1,850	5	Gas
	12/18	15	\$3,250	5	E85

FORD					
Edge FWD					
A-6, 2.0L, 4cyl	21/30	24	\$1,550	6	T
A-S6, 3.5L, 6cyl	19/27	22	\$1,650	5	
A-S6, 3.7L, 6cyl	19/26	22	\$1,650	5	

Escape FWD					
A-S6, 1.6L, 4cyl	23/33	26	\$1,400	7	T
A-S6, 2.0L, 4cyl	22/30	25	\$1,450	6	T
A-S6, 2.5L, 4cyl	22/31	25	\$1,450	6	

GMC					
Terrain FWD					
A-6, 2.4L, 4cyl	22/32	26	\$1,400	7	
A-6, 3.6L, 6cyl	17/24	20	\$1,850	5	
A-6, 2.4L, 4cyl	22/32	26	\$1,400	7	Gas
	15/22	18	\$2,700	6	E85
A-6, 3.6L, 6cyl	17/24	20	\$1,850	5	Gas
	13/22	16	\$3,050	6	E85

HONDA					
CR-V 2WD					
A-5, 2.4L, 4cyl	23/31	26	\$1,400	7	

Crosstour 2WD					
A-5, 2.4L, 4cyl	22/31	25	\$1,450	6	
A-S6, 3.5L, 6cyl	20/30	23	\$1,600	6	

Pilot 2WD					
A-5, 3.5L, 6cyl	18/25	21	\$1,750	5	

HYUNDAI					
Santa Fe 2WD					
A-6, 3.3L, 6cyl	18/25	21	\$1,750	5	

Santa Fe Sport 2WD					
A-6, 2.0L, 4cyl	20/27	23	\$1,600	6	T
A-6, 2.4L, 4cyl	21/29	24	\$1,550	6	

Tucson 2WD					
A-6, 2.0L, 4cyl	22/29	25	\$1,450	6	
M-5, 2.0L, 4cyl	20/26	22	\$1,650	5	
A-6, 2.4L, 4cyl	21/30	25	\$1,450	6	
M-6, 2.4L, 4cyl	20/27	23	\$1,600	6	

INFINITI					
FX37 RWD					
A-S7, 3.7L, 6cyl	17/24	19	\$2,250	4	P

JX35 FWD					
AV-S6, 3.5L, 6cyl	18/24	21	\$2,000	5	P

JEEP					
Compass 2WD					
AV, 2.0L, 4cyl	22/28	24	\$1,550	6	
M-5, 2.0L, 4cyl	23/30	26	\$1,400	7	
AV, 2.4L, 4cyl	21/27	24	\$1,550	6	
M-5, 2.4L, 4cyl	23/28	25	\$1,450	6	
Patriot 2WD					
AV, 2.0L, 4cyl	22/28	24	\$1,550	6	
M-5, 2.0L, 4cyl	23/30	26	\$1,400	7	
AV, 2.4L, 4cyl	21/27	24	\$1,550	6	
M-5, 2.4L, 4cyl	23/28	25	\$1,450	6	

KIA					
Sorento 2WD					
A-6, 2.4L, 4cyl	21/29	24	\$1,550	6	
A-6, 2.4L, 4cyl	21/30	24	\$1,550	6	SIDI
M-6, 2.4L, 4cyl	20/27	22	\$1,650	5	
A-6, 3.5L, 6cyl	20/26	22	\$1,650	5	

Manufacturer Model Configuration (trans, eng size,cyl)	MPG		Annual Fuel Cost	GHG Rating	Notes
	City/Hwy	Comb			
Sportage 2WD					
A-6, 2.0L, 4cyl	21/28	24	\$1,550	6	T
A-6, 2.4L, 4cyl	21/30	25	\$1,450	6	
M-6, 2.4L, 4cyl	20/27	23	\$1,600	6	
LEXUS					
RX 350					
A-S6, 3.5L, 6cyl	18/25	21	\$1,750	5	
RX 450h					
▶AV-S6, 3.5L, 6cyl	32/28	30	\$1,400	8	HEV P
LINCOLN					
MKT FWD					
A-S6, 3.7L, 6cyl	17/25	20	\$1,850	5	
MKX FWD					
A-S6, 3.7L, 6cyl	19/26	22	\$1,650	5	
MAZDA					
CX-5 2WD					
A-S6, 2.0L, 4cyl	26/32	29	\$1,250	8	
M-6, 2.0L, 4cyl	26/35	29	\$1,250	8	
CX-9 2WD					
A-S6, 3.7L, 6cyl	17/24	19	\$1,950	4	
MERCEDES-BENZ					
GLK350					
A-7, 3.5L, 6cyl	19/25	21	\$2,000	5	P
A-7, 3.5L, 6cyl	19/25	21	\$2,000	5	P PZEV
MITSUBISHI					
Outlander 2WD					
AV-S6, 2.4L, 4cyl	22/28	25	\$1,450	6	
A-S6, 3.0L, 6cyl	19/26	22	\$1,950	5	P
Outlander Sport 2WD					
AV-S6, 2.0L, 4cyl	24/31	27	\$1,350	7	
M-5, 2.0L, 4cyl	24/30	26	\$1,400	7	
NISSAN					
Murano FWD					
AV, 3.5L, 6cyl	18/24	20	\$1,850	5	
Pathfinder 2WD					
AV, 3.5L, 6cyl	20/26	22	\$1,650	5	
Rogue FWD					
AV, 2.5L, 4cyl	23/28	25	\$1,450	6	
Xterra 2WD					
A-5, 4.0L, 6cyl	16/22	18	\$2,050	4	
SUZUKI					
Grand Vitara					
A-4, 2.4L, 4cyl	19/25	21	\$1,750	5	
M-5, 2.4L, 4cyl	19/26	22	\$1,650	5	
TOYOTA					
FJ Cruiser 2WD					
A-5, 4.0L, 6cyl	16/20	18	\$2,050	4	
Highlander 2WD					
A-S6, 2.7L, 4cyl	20/25	22	\$1,650	5	
A-S5, 3.5L, 6cyl	18/24	20	\$1,850	5	
RAV4 2WD					
A-S6, 2.5L, 4cyl	24/31	26	\$1,400	7	
RAV4 EV					
▶AV	78/74	76	\$800	10	EV
Venza					
A-S6, 2.7L, 4cyl	20/26	23	\$1,600	6	
A-S6, 3.5L, 6cyl	19/26	22	\$1,650	5	
VOLKSWAGEN					
Tiguan					
A-S6, 2.0L, 4cyl	21/26	23	\$1,850	6	P T
M-6, 2.0L, 4cyl	18/26	21	\$2,000	5	P T

Manufacturer Model Configuration (trans, eng size,cyl)	MPG		Annual Fuel Cost	GHG Rating	Notes
	City/Hwy	Comb			
VOLVO					
XC60 FWD					
A-S6, 3.2L, 6cyl	19/25	21	\$1,750	5	
XC70 FWD					
A-S6, 3.2L, 6cyl	19/25	21	\$1,750	5	
SMALL SPORT UTILITY VEHICLES 4WD					
ACURA					
MDX 4WD					
A-S6, 3.7L, 6cyl	16/21	18	\$2,350	4	P
RDZ 4WD					
A-S6, 3.5L, 6cyl	19/27	22	\$1,950	5	P
ZDX 4WD					
A-S6, 3.7L, 6cyl	16/23	19	\$2,250	4	P
AUDI					
Q5					
A-S8, 2.0L, 4cyl	20/28	23	\$1,850	6	P T
A-S8, 3.0L, 6cyl	18/26	21	\$2,000	5	P S
A-S8, 2.0L, 4cyl	20/28	23	\$1,850	6	Gas T
	14/19	16	\$3,050	5	E85
Q5 Hybrid					
A-S8, 2.0L, 4cyl	24/30	26	\$1,650	7	HEV P T
BMW					
X3 xDrive28i					
A-S8, 2.0L, 4cyl	21/28	24	\$1,750	6	P T
X3 xDrive35i					
A-S8, 3.0L, 6cyl	19/26	21	\$2,000	5	P T
BUICK					
Encore AWD					
A-S6, 1.4L, 4cyl	23/30	26	\$1,400	7	T
CHEVROLET					
Captiva AWD					
A-6, 3.0L, 6cyl	16/22	18	\$2,050	4	Gas
	11/16	13	\$3,750	4	E85
Equinox AWD					
A-6, 2.4L, 4cyl	20/29	23	\$1,600	6	
A-6, 3.6L, 6cyl	16/23	19	\$1,950	4	
A-6, 2.4L, 4cyl	20/29	23	\$1,600	6	Gas
	14/20	17	\$2,850	6	E85
A-6, 3.6L, 6cyl	16/23	19	\$1,950	4	Gas
	12/17	14	\$3,450	4	E85
DODGE					
Journey AWD					
A-6, 3.6L, 6cyl	16/24	19	\$1,950	4	
FORD					
Edge AWD					
A-S6, 3.5L, 6cyl	18/25	21	\$1,750	5	ST
A-S6, 3.5L, 6cyl	18/25	21	\$1,750	5	
A-S6, 3.7L, 6cyl	17/23	19	\$1,950	4	
Escape AWD					
A-S6, 1.6L, 4cyl	22/30	25	\$1,450	6	T
A-S6, 2.0L, 4cyl	21/28	24	\$1,550	6	T
GMC					
Terrain AWD					
A-6, 2.4L, 4cyl	20/29	23	\$1,600	6	
A-6, 3.6L, 6cyl	16/23	19	\$1,950	4	
A-6, 2.4L, 4cyl	20/29	23	\$1,600	6	Gas
	14/20	17	\$2,850	6	E85
A-6, 3.6L, 6cyl	16/23	19	\$1,950	4	Gas
	12/17	14	\$3,450	4	E85

Manufacturer Model Configuration (trans, eng size,cyl)	MPG		Annual Fuel Cost	GHG Rating	Notes
	City/Hwy	Comb			
HONDA					
CR-V 4WD					
A-5, 2.4L, 4cyl	22/30	25	\$1,450	6	
Crosstour 4WD					
A-S6, 3.5L, 6cyl	19/28	22	\$1,650	5	
HYUNDAI					
Santa Fe 4WD					
A-6, 3.3L, 6cyl	18/24	20	\$1,850	5	
Santa Fe Sport 4WD					
A-6, 2.0L, 4cyl	19/24	21	\$1,750	5	T
A-6, 2.4L, 4cyl	20/26	22	\$1,650	5	
Tucson 4WD					
A-6, 2.4L, 4cyl	20/27	23	\$1,600	6	
M-6, 2.4L, 4cyl	19/25	21	\$1,750	5	
INFINITI					
FX37 AWD					
A-S7, 3.7L, 6cyl	16/22	18	\$2,350	4	P
FX50 AWD					
A-S7, 5.0L, 8cyl	14/20	16	\$2,650	3	P
JX35 AWD					
AV-S6, 3.5L, 6cyl	18/23	20	\$2,100	5	P
JEEP					
Compass 4WD					
AV, 2.4L, 4cyl	20/23	21	\$1,750	5	ORP
AV, 2.4L, 4cyl	21/26	23	\$1,600	6	
M-5, 2.4L, 4cyl	22/28	24	\$1,550	6	
Patriot 4WD					
AV, 2.4L, 4cyl	20/23	21	\$1,750	5	ORP
AV, 2.4L, 4cyl	21/26	23	\$1,600	6	
M-5, 2.4L, 4cyl	22/28	24	\$1,550	6	
Wrangler 4WD					
A-5, 3.6L, 6cyl	17/21	18	\$2,050	4	
M-6, 3.6L, 6cyl	17/21	18	\$2,050	4	
Wrangler Unlimited 4WD					
A-5, 3.6L, 6cyl	16/20	18	\$2,050	4	
M-6, 3.6L, 6cyl	16/21	18	\$2,050	4	
KIA					
Sorento 4WD					
A-6, 2.4L, 4cyl	20/26	22	\$1,650	5	SIDI
A-6, 2.4L, 4cyl	21/27	23	\$1,600	6	
A-6, 3.5L, 6cyl	18/24	20	\$1,850	5	
Sportage 4WD					
A-6, 2.0L, 4cyl	20/25	22	\$1,650	5	T
A-6, 2.4L, 4cyl	20/27	23	\$1,600	6	
M-6, 2.4L, 4cyl	19/25	21	\$1,750	5	
LAND ROVER					
LR2					
A-S6, 2.0L, 4cyl	17/24	20	\$2,100	5	P T
Range Rover Evoque					
A-S6, 2.0L, 4cyl	20/28	23	\$1,850	6	P T
LEXUS					
RX 350 AWD					
A-S6, 3.5L, 6cyl	18/24	20	\$1,850	5	
A-S8, 3.5L, 6cyl	18/26	21	\$1,750	5	
RX 450h AWD					
AV-S6, 3.5L, 6cyl	30/28	29	\$1,450	8	HEV P
LINCOLN					
MKT AWD					
A-S6, 3.5L, 6cyl	16/23	18	\$2,050	4	T
MKX AWD					
A-S6, 3.7L, 6cyl	17/23	19	\$1,950	4	

Manufacturer Model Configuration (trans, eng size,cyl)	MPG		Annual Fuel Cost	GHG Rating	Notes
	City/Hwy	Comb			
MAZDA					
CX-5 4WD					
A-S6, 2.0L, 4cyl	25/31	28	\$1,300	7	
CX-9 4WD					
A-S6, 3.7L, 6cyl	16/22	18	\$2,050	4	
MERCEDES-BENZ					
GLK250 Bluetec 4matic					
A-7, 2.1L, 4cyl	24/33	28	\$1,550	6	D T
GLK350 4matic					
A-7, 3.5L, 6cyl	19/24	21	\$2,000	5	P PZEV
A-7, 3.5L, 6cyl	19/24	21	\$2,000	5	P
MITSUBISHI					
Outlander 4WD					
AV-S6, 2.4L, 4cyl	22/27	24	\$1,550	6	
A-S6, 3.0L, 6cyl	19/25	21	\$2,000	5	P
Outlander Sport 4WD					
AV-S6, 2.0L, 4cyl	24/29	26	\$1,400	7	
NISSAN					
Murano AWD					
AV, 3.5L, 6cyl	18/23	20	\$1,850	5	
Murano CrossCabriolet					
AV, 3.5L, 6cyl	17/22	19	\$2,250	4	P
Pathfinder 4WD					
AV, 3.5L, 6cyl	19/25	21	\$1,750	5	
Rogue AWD					
AV, 2.5L, 4cyl	22/27	24	\$1,550	6	
Xterra 4WD					
A-5, 4.0L, 6cyl	15/20	17	\$2,150	4	
M-6, 4.0L, 6cyl	16/20	17	\$2,150	4	
SUBARU					
Forester AWD					
A-S4, 2.5L, 4cyl	19/24	21	\$2,000	5	P T
A-S4, 2.5L, 4cyl	21/27	23	\$1,600	6	
M-5, 2.5L, 4cyl	21/27	23	\$1,600	6	
Outback AWD					
AV, 2.5L, 4cyl	24/30	26	\$1,400	7	
M-6, 2.5L, 4cyl	21/28	24	\$1,550	6	
A-S5, 3.6L, 6cyl	18/25	20	\$1,850	5	
Tribeca AWD					
A-S5, 3.6L, 6cyl	16/21	18	\$2,050	4	
XV Crosstrek AWD					
AV, 2.0L, 4cyl	25/33	28	\$1,300	7	
M-5, 2.0L, 4cyl	23/30	26	\$1,400	7	
SUZUKI					
Grand Vitara 4WD					
A-4, 2.4L, 4cyl	19/23	20	\$1,850	5	
TOYOTA					
FJ Cruiser 4WD					
A-5, 4.0L, 6cyl	17/20	18	\$2,050	4	PT4WD
M-6, 4.0L, 6cyl	15/18	16	\$2,300	3	
Highlander 4WD					
A-S5, 3.5L, 6cyl	17/22	19	\$1,950	4	
RAV4 AWD					
A-S6, 2.5L, 4cyl	22/29	25	\$1,450	6	
RAV4 Limited AWD					
A-S6, 2.5L, 4cyl	22/29	25	\$1,450	6	
Venza AWD					
A-S6, 2.7L, 4cyl	20/26	22	\$1,650	5	
A-S6, 3.5L, 6cyl	18/25	21	\$1,750	5	

Manufacturer Model Configuration (trans, eng size,cyl)	MPG		Annual Fuel Cost	GHG Rating	Notes
	City/Hwy	Comb			
VOLKSWAGEN					
Tiguan 4motion					
A-S6, 2.0L, 4cyl	20/26	23	\$1,850	6	P T
VOLVO					
XC60 AWD					
A-S6, 3.0L, 6cyl	17/23	20	\$1,850	5	T
A-S6, 3.2L, 6cyl	18/24	20	\$1,850	5	
XC70 AWD					
A-S6, 3.0L, 6cyl	17/23	20	\$1,850	5	T
A-S6, 3.2L, 6cyl	18/24	20	\$1,850	5	

STANDARD SPORT UTILITY VEHICLES 2WD

BUICK					
Enclave FWD					
A-6, 3.6L, 6cyl	17/24	19	\$1,950	4	
CADILLAC					
Escalade 2WD					
A-6, 6.2L, 8cyl	14/18	16	\$2,300	3	Gas
	10/15	12	\$4,050	3	E85
Escalade ESV 2WD					
A-6, 6.2L, 8cyl	14/18	16	\$2,300	3	Gas
	10/15	12	\$4,050	3	E85
Escalade Hybrid 2WD					
AV, 6.0L, 8cyl	20/23	21	\$1,750	5	HEV
SRX 2WD					
A-S6, 3.6L, 6cyl	17/24	19	\$1,950	4	Gas
	12/18	14	\$3,450	5	E85

CHEVROLET					
Avalanche 1500 2WD					
A-6, 5.3L, 8cyl	15/21	17	\$2,150	4	Gas
	11/16	13	\$3,750	4	E85
Suburban 1500 2WD					
A-6, 5.3L, 8cyl	15/21	17	\$2,150	4	Gas
	11/16	13	\$3,750	4	E85
Suburban 2500 2WD					
A-6, 6.0L, 8cyl	10/16	12	\$3,050	1	
Tahoe 1500 2WD					
A-6, 5.3L, 8cyl	15/21	17	\$2,150	4	Gas
	11/16	13	\$3,750	4	E85
Tahoe Hybrid 2WD					
AV, 6.0L, 8cyl	20/23	21	\$1,750	5	HEV
Traverse FWD					
A-6, 3.6L, 6cyl	17/24	19	\$1,950	4	

DODGE					
Durango 2WD					
A-6, 5.7L, 8cyl	14/20	16	\$2,500	3	Mid
A-5, 3.6L, 6cyl	16/23	19	\$1,950	4	Gas
	12/17	14	\$3,450	4	E85

FORD					
Expedition 2WD FFV					
A-6, 5.4L, 8cyl	14/20	16	\$2,300	3	Gas
	10/14	12	\$4,050	3	E85
Explorer 2WD FFV					
A-S6, 3.5L, 6cyl	17/24	20	\$1,850	5	Gas
	13/18	15	\$3,250	5	E85
Explorer FWD					
A-6, 2.0L, 4cyl	20/28	23	\$1,600	6	T
A-S6, 3.5L, 6cyl	17/24	20	\$1,850	5	
Flex FWD					
A-S6, 3.5L, 6cyl	18/25	20	\$1,850	5	

Manufacturer Model Configuration (trans, eng size,cyl)	MPG		Annual Fuel Cost	GHG Rating	Notes
	City/Hwy	Comb			
GMC					
Acadia FWD					
A-6, 3.6L, 6cyl	17/24	19	\$1,950	4	
Yukon 1500 2WD					
A-6, 5.3L, 8cyl	15/21	17	\$2,150	4	Gas
	11/16	13	\$3,750	4	E85
A-6, 6.2L, 8cyl	14/18	16	\$2,300	3	Gas
	10/15	12	\$4,050	3	E85
Yukon 1500 Hybrid 2WD					
AV, 6.0L, 8cyl	20/23	21	\$1,750	5	HEV
Yukon XL 1500 2WD					
A-6, 5.3L, 8cyl	15/21	17	\$2,150	4	Gas
	11/16	13	\$3,750	4	E85
A-6, 6.2L, 8cyl	14/18	16	\$2,300	3	Gas
	10/15	12	\$4,050	3	E85
Yukon XL 2500 2WD					
A-6, 6.0L, 8cyl	10/16	12	\$3,050	1	

INFINITI					
QX56 2WD					
A-S7, 5.6L, 8cyl	14/20	16	\$2,650	3	P
JEEP					
Grand Cherokee 2WD					
A-6, 5.7L, 8cyl	14/20	16	\$2,500	3	Mid
A-5, 3.6L, 6cyl	17/23	19	\$1,950	4	Gas
	13/17	14	\$3,450	5	E85

LINCOLN					
Navigator 2WD FFV					
A-6, 5.4L, 8cyl	14/20	16	\$2,300	3	Gas
	10/14	12	\$4,050	3	E85

MERCEDES-BENZ					
ML350					
A-7, 3.5L, 6cyl	18/23	20	\$2,100	5	P

NISSAN					
Armada 2WD					
A-5, 5.6L, 8cyl	13/19	15	\$2,450	3	
A-5, 5.6L, 8cyl	12/19	15	\$2,450	3	Gas
	9/13	11	\$4,400	3	E85

TOYOTA					
4Runner 2WD					
A-S5, 4.0L, 6cyl	17/22	19	\$1,950	4	
Sequoia 2WD					
A-S6, 5.7L, 8cyl	13/18	15	\$2,450	3	

VOLVO					
XC90 FWD					
A-S6, 3.2L, 6cyl	16/23	19	\$1,950	4	

STANDARD SPORT UTILITY VEHICLES 4WD

AUDI					
Q7					
A-S8, 3.0L, 6cyl	16/22	18	\$2,350	4	P S
A-S8, 3.0L, 6cyl	19/28	22	\$2,000	4	D T

BMW					
X5 M					
A-S6, 4.4L, 8cyl	12/17	14	\$3,000	2	P T
X5 xDrive35d					
A-S6, 3.0L, 6cyl	19/26	22	\$2,000	4	D T
X5 xDrive35i					
A-S8, 3.0L, 6cyl	16/23	19	\$2,250	4	P T
X5 xDrive50i					
A-S8, 4.4L, 8cyl	14/20	16	\$2,650	3	P T
X6 M					
A-S6, 4.4L, 8cyl	12/17	14	\$3,000	2	P T

Manufacturer Model Configuration (trans, eng size,cyl)	MPG		Annual Fuel Cost	GHG Rating	Notes
	City/Hwy	Comb			
X6 xDrive35i					
A-S8, 3.0L, 6cyl	16/23	19	\$2,250	4	P T
X6 xDrive50i					
A-S8, 4.4L, 8cyl	14/20	16	\$2,650	3	P T
BUICK					
Enclave AWD					
A-6, 3.6L, 6cyl	16/22	18	\$2,050	4	
CADILLAC					
Escalade AWD					
A-6, 6.2L, 8cyl	13/18	15	\$2,450	3	Gas
	10/14	12	\$4,050	3	E85
Escalade ESV AWD					
A-6, 6.2L, 8cyl	13/18	14	\$2,600	2	Gas
	9/13	10	\$4,850	2	E85
Escalade Ext AWD					
A-6, 6.2L, 8cyl	13/18	14	\$2,600	2	Gas
	9/13	10	\$4,850	2	E85
Escalade Hybrid 4WD					
AV, 6.0L, 8cyl	20/23	21	\$1,750	5	HEV
SRX AWD					
A-S6, 3.6L, 6cyl	16/23	18	\$2,050	4	Gas
	12/17	14	\$3,450	4	E85
CHEVROLET					
Avalanche 1500 4WD					
A-6, 5.3L, 8cyl	15/21	17	\$2,150	4	Gas
	11/16	13	\$3,750	4	E85
Suburban 1500 4WD					
A-6, 5.3L, 8cyl	15/21	17	\$2,150	4	Gas
	11/16	13	\$3,750	4	E85
Suburban 2500 4WD					
A-6, 6.0L, 8cyl	10/15	12	\$3,050	1	
Tahoe 1500 4WD					
A-6, 5.3L, 8cyl	15/21	17	\$2,150	4	Gas
	11/16	13	\$3,750	4	E85
Tahoe Hybrid 4WD					
AV, 6.0L, 8cyl	20/23	21	\$1,750	5	HEV
Traverse AWD					
A-6, 3.6L, 6cyl	16/23	19	\$1,950	4	
DODGE					
Durango 4WD					
A-6, 5.7L, 8cyl	13/20	15	\$2,650	3	Mid
A-5, 3.6L, 6cyl	16/23	19	\$1,950	4	Gas
	12/17	14	\$3,450	4	E85
FORD					
Expedition 4WD FFV					
A-6, 5.4L, 8cyl	13/18	15	\$2,450	3	Gas
	9/13	11	\$4,400	3	PT4WD E85
Explorer AWD					
A-S6, 3.5L, 6cyl	16/22	18	\$2,050	4	T
A-S6, 3.5L, 6cyl	17/23	19	\$1,950	4	
Explorer AWD FFV					
A-S6, 3.5L, 6cyl	17/23	19	\$1,950	4	Gas
	12/17	14	\$3,450	4	E85
Flex AWD					
A-S6, 3.5L, 6cyl	16/23	18	\$2,050	4	T
A-S6, 3.5L, 6cyl	17/23	19	\$1,950	4	
GMC					
Acadia AWD					
A-6, 3.6L, 6cyl	16/23	18	\$2,050	4	
Yukon 1500 4WD					
A-6, 5.3L, 8cyl	15/21	17	\$2,150	4	Gas
	11/16	13	\$3,750	4	E85

Manufacturer Model Configuration (trans, eng size,cyl)	MPG		Annual Fuel Cost	GHG Rating	Notes
	City/Hwy	Comb			
Yukon 1500 Hybrid 4WD					
AV, 6.0L, 8cyl	20/23	21	\$1,750	5	HEV
Yukon Denali 1500 AWD					
A-6, 6.2L, 8cyl	13/18	15	\$2,450	3	Gas
	10/14	12	\$4,050	3	E85
Yukon Denali 1500 Hybrid 4WD					
AV, 6.0L, 8cyl	20/23	21	\$1,750	5	HEV
Yukon XL 1500 4WD					
A-6, 5.3L, 8cyl	15/21	17	\$2,150	4	Gas
	11/16	13	\$3,750	4	E85
Yukon XL 1500 AWD					
A-6, 6.2L, 8cyl	13/18	14	\$2,600	2	Gas
	9/13	10	\$4,850	2	E85
Yukon XL 2500 4WD					
A-6, 6.0L, 8cyl	10/15	12	\$3,050	1	
HONDA					
Pilot 4WD					
A-5, 3.5L, 6cyl	17/24	20	\$1,850	5	
INFINITI					
QX56 4WD					
A-S7, 5.6L, 8cyl	14/20	16	\$2,650	3	P
JEEP					
Grand Cherokee 4WD					
A-6, 5.7L, 8cyl	13/20	15	\$2,650	3	Mid
A-5, 3.6L, 6cyl	16/23	19	\$1,950	4	Gas
	12/17	14	\$3,450	4	E85
Grand Cherokee SRT8					
A-5, 6.4L, 8cyl	12/18	14	\$3,000	2	P
LAND ROVER					
LR4					
A-S6, 5.0L, 8cyl	12/17	14	\$3,000	2	P
Range Rover					
A-S8, 5.0L, 8cyl	13/19	15	\$2,800	3	P S
A-S8, 5.0L, 8cyl	14/20	16	\$2,650	3	P
Range Rover Sport					
A-S6, 5.0L, 8cyl	12/17	14	\$3,000	2	P S
A-S6, 5.0L, 8cyl	13/18	15	\$2,800	3	P
LEXUS					
GX 460					
A-S6, 4.6L, 8cyl	15/20	17	\$2,500	4	P
LX 570					
A-S6, 5.7L, 8cyl	12/17	14	\$3,000	2	P
LINCOLN					
Navigator 4WD FFV					
A-6, 5.4L, 8cyl	13/18	15	\$2,450	3	Gas
	9/13	11	\$4,400	3	PT4WD E85
MERCEDES-BENZ					
G550					
A-7, 5.5L, 8cyl	12/15	13	\$3,250	2	P
G63 AMG					
A-7, 5.5L, 8cyl	12/14	13	\$3,250	2	P T
GL350 Bluetec 4matic					
A-7, 3.0L, 6cyl	19/26	22	\$2,000	4	D T
GL450 4matic					
A-7, 4.7L, 8cyl	14/19	16	\$2,650	3	P T
GL550 4matic					
A-7, 4.7L, 8cyl	13/18	15	\$2,800	3	P T
GL63 AMG					
A-7, 5.5L, 8cyl	13/17	14	\$3,000	2	P T

Manufacturer Model Configuration (trans, eng size,cyl)	MPG		Annual Fuel Cost	GHG Rating	Notes
	City/Hwy	Comb			
ML350 4matic					
A-7, 3.5L, 6cyl	18/23	20	\$2,100	5	P
A-7, 3.5L, 6cyl	18/23	20	\$2,100	5	Gas
	13/17	15	\$3,250	5	E85
ML350 Bluetec 4matic					
A-7, 3.0L, 6cyl	20/28	23	\$1,900	4	D T
ML550 4matic					
A-7, 4.7L, 8cyl	14/20	16	\$2,650	3	P T
ML63 AMG					
A-7, 5.5L, 8cyl	13/17	15	\$2,800	3	P T
R350 4matic					
A-7, 3.5L, 6cyl	16/21	18	\$2,350	4	P
NISSAN					
Armada 4WD					
A-5, 5.6L, 8cyl	12/18	14	\$2,600	2	
A-5, 5.6L, 8cyl	12/18	14	\$2,600	2	Gas
	9/13	11	\$4,400	2	E85
PORSCHE					
Cayenne					
A-S8, 3.6L, 6cyl	17/23	19	\$2,250	4	P
M-6, 3.6L, 6cyl	15/22	17	\$2,500	4	P
Cayenne Diesel					
A-S8, 3.0L, 6cyl	19/29	23	\$1,900	4	D T
Cayenne GTS					
A-8, 4.8L, 8cyl	15/21	17	\$2,500	4	P
Cayenne S					
A-8, 4.8L, 8cyl	16/22	18	\$2,350	4	P
Cayenne S Hybrid					
A-8, 3.0L, 6cyl	20/24	21	\$2,000	5	HEV P S
Cayenne Turbo					
A-8, 4.8L, 8cyl	15/22	17	\$2,500	4	P T
TOYOTA					
4Runner 4WD					
A-S5, 4.0L, 6cyl	17/21	18	\$2,050	4	PT4WD
A-S5, 4.0L, 6cyl	17/21	18	\$2,050	4	
Highlander Hybrid 4WD					
▶AV, 3.5L, 6cyl	28/28	28	\$1,300	7	HEV
Land Cruiser Wagon 4WD					
A-S6, 5.7L, 8cyl	13/18	15	\$2,450	3	
Sequoia 4WD					
A-S6, 5.7L, 8cyl	13/17	14	\$2,600	2	PT4WD
Sequoia 4WD FFV					
A-S6, 5.7L, 8cyl	13/17	14	\$2,600	2	Gas PT4WD
	9/13	10	\$4,850	3	E85
VOLKSWAGEN					
Touareg					
A-S8, 3.6L, 6cyl	17/23	19	\$2,250	4	P
A-S8, 3.0L, 6cyl	20/29	23	\$1,900	5	D T
Touareg Hybrid					
A-S8, 3.0L, 6cyl	20/24	21	\$2,000	5	HEV P S
VOLVO					
XC90 AWD					
A-S6, 3.2L, 6cyl	16/23	18	\$2,050	4	

DIESEL VEHICLES

Diesel-powered vehicles typically get 30-35% more miles per gallon than comparable vehicles powered by gasoline. Diesel engines are inherently more energy efficient, and diesel fuel contains 10% more energy per gallon than gasoline. In addition, new advances in diesel engine technology have improved performance, reduced engine noise and fuel odor, and decreased emissions of harmful air pollutants. Ultra-low sulfur diesel fuels also help reduce emissions from these vehicles.

Annual fuel costs below are estimated assuming 15,000 miles of travel each year (55% city and 45% highway) and a diesel fuel cost of \$2.92 per gallon.

Manufacturer Model Configuration (trans, eng size,cyl)	MPG		Annual Fuel Cost	GHG Rating	Notes
	City/Hwy	Comb			

SUBCOMPACT CARS

VOLKSWAGEN

Beetle Convertible

AM-S6, 2.0L, 4cyl	28/37	31	\$1,400	7	D T
M-6, 2.0L, 4cyl	28/41	32	\$1,350	7	D T

COMPACT CARS

VOLKSWAGEN

Beetle

AM-S6, 2.0L, 4cyl	29/39	32	\$1,350	7	D T
M-6, 2.0L, 4cyl	28/41	32	\$1,350	7	D T

Golf

AM-S6, 2.0L, 4cyl	30/42	34	\$1,300	8	D T
M-6, 2.0L, 4cyl	30/42	34	\$1,300	8	D T

Jetta

AM-S6, 2.0L, 4cyl	30/42	34	\$1,300	8	D T
M-6, 2.0L, 4cyl	30/42	34	\$1,300	8	D T

MIDSIZE CARS

MERCEDES-BENZ

E350 Bluetec

A-7, 3.0L, 6cyl	22/32	25	\$1,750	5	D T
-----------------	-------	----	---------	---	-----

VOLKSWAGEN

Passat

AM-S6, 2.0L, 4cyl	30/40	34	\$1,300	8	D T
M-6, 2.0L, 4cyl	31/43	35	\$1,250	8	D T

LARGE CARS

MERCEDES-BENZ

S350 Bluetec 4matic

A-7, 3.0L, 6cyl	21/31	25	\$1,750	5	D T
-----------------	-------	----	---------	---	-----

Manufacturer Model Configuration (trans, eng size,cyl)	MPG		Annual Fuel Cost	GHG Rating	Notes
	City/Hwy	Comb			

SMALL STATION WAGONS

AUDI

A3

AM-S6, 2.0L, 4cyl	30/42	34	\$1,300	8	D T
-------------------	-------	----	---------	---	-----

VOLKSWAGEN

Jetta SportWagen

AM-S6, 2.0L, 4cyl	29/39	33	\$1,350	7	D T
M-6, 2.0L, 4cyl	30/42	34	\$1,300	8	D T

SMALL SPORT UTILITY VEHICLES 4WD

MERCEDES-BENZ

GLK250 Bluetec 4matic

A-7, 2.1L, 4cyl	24/33	28	\$1,550	6	D T
-----------------	-------	----	---------	---	-----

STANDARD SPORT UTILITY VEHICLES 4WD

AUDI

Q7

A-S8, 3.0L, 6cyl	19/28	22	\$2,000	4	D T
------------------	-------	----	---------	---	-----

BMW

X5 xDrive35d

A-S6, 3.0L, 6cyl	19/26	22	\$2,000	4	D T
------------------	-------	----	---------	---	-----

MERCEDES-BENZ

GL350 Bluetec 4matic

A-7, 3.0L, 6cyl	19/26	22	\$2,000	4	D T
-----------------	-------	----	---------	---	-----

ML350 Bluetec 4matic

A-7, 3.0L, 6cyl	20/28	23	\$1,900	4	D T
-----------------	-------	----	---------	---	-----

PORSCHE

Cayenne Diesel

A-S8, 3.0L, 6cyl	19/29	23	\$1,900	4	D T
------------------	-------	----	---------	---	-----

VOLKSWAGEN

Touareg

A-S8, 3.0L, 6cyl	20/29	23	\$1,900	5	D T
------------------	-------	----	---------	---	-----

ELECTRIC VEHICLES

Electric vehicles (EVs), also called battery electric vehicles (BEVs), are propelled by one or more electric motors powered by rechargeable battery packs. EVs are energy-efficient and reduce our dependence on petroleum since electricity is produced from domestic resources. They emit no tailpipe pollutants, although the power plant producing the electricity may emit pollution.

Electric motors have several performance benefits. They are quiet; they have instant torque for quick acceleration; and require less maintenance than internal combustion engines.

Current EVs have a shorter driving range than gasoline or hybrid vehicles, and their range is more sensitive to driving style, driving conditions, and accessory use. Fully recharging the battery pack

can take several hours—though a “quick charge” to 80% capacity may take as little as 30 minutes—and options for charging the vehicle away from home may be limited. EVs are also more expensive than conventional vehicles and hybrids due to the cost of the large battery packs. Still, manufacturers are working hard to improve the driving range and reduce the cost of these vehicles, and public charging stations may become more common in the future.

A federal income tax credit of up to \$7,500 is currently available to consumers purchasing a qualifying EV. Visit www.fueleconomy.gov for additional information on EVs, including tax incentives.

Model	Motor	Battery Type	Fuel Economy (city/hwy/comb)		Range* (miles)	Charge Time (hrs @ 240V)
			MPGe (miles)	Kwh/100 miles		
TWO SEATER CARS						
SMART						
fortwo electric drive convertible	55 kW DCPM†	Li-Ion	122/93/107	28/36/32	68	6
fortwo electric drive coupe	55 kW DCPM†	Li-Ion	122/93/107	28/36/32	68	6
MINICOMPACT CARS						
FIAT						
500e	82 kW ACIPM	Li-Ion	122/108/116	28/31/29	87	4
SCION						
iQ EV	NA	Li-Ion	138/105/121	24/32/28	38	4
SUBCOMPACT CARS						
CODA AUTOMOTIVE						
CODA‡	100kw DCPM†	Li-Ion Extended Range	NA	NA	NA	NA
CODA‡	100 kW DCPM†	Li-Ion	77/68/73	44/50/46	88	6
MITSUBISHI						
i-MiEV	49 kW DCPM†	Li-Ion	126/99/112	27/34/30	62	7
COMPACT CARS						
FORD						
Focus Electric	107 kW AC PMSM§	Li-Ion	110/99/105	31/34/32	76	4
MIDSIZE CARS						
NISSAN						
Leaf	80 kW DCPM†	Li-Ion	129/102/115	26/33/29	75	7
LARGE CARS						
TESLA						
Model S (40 kW-hr battery pack)	225 kW AC Induction#	Li-Ion	93/96/94	36/35/36	139	6
Model S (60 kW-hr battery pack)	225 kW AC Induction#	Li-Ion	94/97/95	36/35/35	208	10
Model S (85 kW-hr battery pack)	270 kW AC Induction#	Li-Ion	88/90/89	38/37/38	265	12
SMALL STATION WAGONS						
HONDA						
Fit EV	92 kW DCPM†	Li-Ion	132/105/118	26/32/29	82	4
SMALL SPORT UTILITY VEHICLES 2WD						
BYD						
e6	75 kW AC PMSM§	Li-Ion	61/65/63	55/52/54	127	6
TOYOTA						
RAV4 EV	115 kW AC Induction#	Li-Ion	78/74/76	43/46/44	103	6

* Range for combined city/highway driving

† Direct current permanent magnet, brushless motor

‡ The CODA will be available in two range options for model year 2013. The shorter-range version will be available in select markets starting in late 2012. The extended range version will be available in early 2013. Visit www.codaautomotive.com for more details.

§ Permanent magnet synchronous motor

|| Alternating current induction motor

PLUG-IN HYBRID ELECTRIC VEHICLES

Plug-in hybrid electric vehicles (PHEVs) are hybrids with high capacity batteries that can be charged by plugging them into an electrical outlet or charging station. PHEVs can store enough electricity from the power grid to significantly reduce their petroleum consumption under typical driving conditions.

There are two basic PHEV configurations:

- **Series PHEVs, also called Extended Range Electric Vehicles (EREVs).** The electric motor on these vehicles is the only power source that turns the wheels; the gasoline engine only generates electricity. Series PHEVs can run solely on electricity until the battery needs to be recharged. The gasoline engine will then generate the electricity needed to power the electric motor. For short trips, these vehicles may not use any gasoline.
- **Parallel or Blended PHEVs.** Both the engine and electric motor are mechanically connected to the wheels, and both may propel the vehicle. The vehicle may operate using both electricity and gasoline at the same time, using electricity only, or using gasoline only.

PHEVs also have different battery capacities, allowing some to travel farther on electricity than others. PHEV fuel economy, like that of EVs and regular hybrids, can be sensitive to driving style, driving conditions, and accessory use. When operating in pure electric mode, PHEVs emit no tailpipe pollutants, although the power plant producing the electricity may emit pollution.

Charging a PHEV's battery typically takes several hours, but a "quick charge" to 80% capacity may take 30 minutes or less. However, PHEVs don't have to be plugged in to be driven. They can be fueled solely with gasoline, like a conventional hybrid, but will not achieve maximum range or fuel economy without charging.

PHEVs use less petroleum and cost less to fuel than conventional hybrids, but they are more expensive to purchase.

A federal income tax credit of up to \$7,500 is currently available to consumers purchasing a qualifying PHEV. Visit www.fueleconomy.gov for additional information on PHEVs, including tax incentives.

Manufacturer Model Eng. Size/No. Cyl, Elec. Motor	Fuel	Fuel Economy Combined MPGe		Range (miles)	Total Range (miles)	Charge Time (hrs @ 240)	GHG Score	Annual Fuel Cost
		City / Hwy / Comb	MPG					
COMPACT CARS								
CHEVROLET								
Volt								
1.4L, 4cyl, 111 kW	Electricity	98 MPGe (35kWh/100 mi)		38	380*	4	10	\$800
	Premium Gasoline	35/40/37		344				
MIDSIZE CARS								
FORD								
C-MAX Energi Plug-in Hybrid								
2.0L, 4cyl, 68 kW	Electricity + Gasoline	88 MPGe ([37kWh +0 gal]/100 mi)		20	550*	2.5	10	\$850
	Gasoline	40/36/38		532				
Fusion Energi Plug-in Hybrid								
2.0L, 4cyl, 68 kW	Electricity + Gasoline	88 MPGe ([37kWh +0 gal]/100 mi)		20	550*	2.5	10	\$850
	Gasoline	40/36/38		532				
TOYOTA								
Prius Plug-in Hybrid								
1.8L, 4cyl, 18 kW	Electricity + Gasoline	95 MPGe ([29kWh +0.2 gal]/100 mi)		11	540*	1.5	10	\$650
	Gasoline	51/49/50		530				

* Total range is rounded to the nearest 10 miles

† Direct current permanent magnet, brushless motor.

HYBRID-ELECTRIC VEHICLES

It's no coincidence that some of the most fuel-efficient vehicles for the 2013 model year are hybrid-electric vehicles (HEVs). Hybrids combine the best features of the internal combustion engine with an electric motor and can significantly improve fuel economy without sacrificing performance or driving range. HEVs may also be configured to provide increased performance.

HEVs are primarily propelled by an internal combustion engine, just like conventional vehicles. However, they also convert energy normally wasted during coasting and braking into electricity, which is stored in a battery until needed by the electric motor. The electric motor assists the engine when accelerating or hill climbing and at low speeds where internal combustion engines are least efficient. Unlike all-electric vehicles, HEVs do not need to be plugged into an external source of electricity to be recharged; conventional gasoline and regenerative braking provide all of the energy that the vehicle needs.

Annual fuel cost is estimated assuming 15,000 miles of travel each year (55% city and 45% highway) and a fuel cost of \$2.45 per gallon for regular unleaded gasoline or \$2.82 for premium gasoline.

Manufacturer Model Configuration (trans, eng size,cyl)	MPG		Annual Fuel Cost	GHG Rating	Battery Type/Notes
	City/Hwy	Comb			
TWO SEATER CARS					
HONDA					
CR-Z					
AV-S7, 1.5L, 4cyl	36/39	37	\$1,000	9	144V Li-Ion
M-6, 1.5L, 4cyl	31/38	34	\$1,100	9	144V Li-Ion
COMPACT CARS					
ACURA					
ILX Hybrid					
AV-S7, 1.5L, 4cyl	39/38	38	\$1,100	9	144V Li-Ion
BMW					
ActiveHybrid 3					
A-S8, 3.0L, 6cyl	25/33	28	\$1,500	7	374V Li-Ion
HONDA					
Civic Hybrid					
AV, 1.5L, 4cyl	44/44	44	\$850	10	144V Li-Ion
Insight					
AV-S7, 1.3L, 4cyl	41/44	42	\$900	10	101V Ni-MH
AV, 1.3L, 4cyl	41/44	42	\$900	10	101V Ni-MH
LEXUS					
CT 200h					
AV, 1.8L, 4cyl	43/40	42	\$900	10	202V Ni-MH
TOYOTA					
Prius c					
AV, 1.5L, 4cyl	53/46	50	\$750	10	144V Ni-MH
VOLKSWAGEN					
Jetta Hybrid					
AM-S7, 1.4L, 4cyl	42/48	45	\$950	10	220V Li-Ion
MIDSIZE CARS					
BMW					
ActiveHybrid 5					
A-S8, 3.0L, 6cyl	23/30	26	\$1,650	7	374V Li-Ion
BUICK					
LaCrosse eAssist					
A-S6, 2.4L, 4cyl	25/36	29	\$1,250	8	115V Li-Ion
Regal eAssist					
A-S6, 2.4L, 4cyl	25/36	29	\$1,250	8	115V Li-Ion
CHEVROLET					
Malibu eAssist					
A-S6, 2.4L, 4cyl	25/37	29	\$1,250	8	115V Li-Ion
FORD					
Fusion Hybrid FWD					
AV, 2.0L, 4cyl	44/41	42	\$900	10	280V Li-Ion
HYUNDAI					
Sonata Hybrid					
AM-6, 2.4L, 4cyl	36/40	38	\$950	9	270V Li-Ion
Sonata Hybrid Limited					
AM-6, 2.4L, 4cyl	36/40	37	\$1,000	9	270V Li-Ion

Manufacturer Model Configuration (trans, eng size,cyl)	MPG		Annual Fuel Cost	GHG Rating	Battery Type/Notes
	City/Hwy	Comb			
INFINITI					
M35h					
A-S7, 3.5L, 6cyl	27/32	29	\$1,450	8	346V Li-Ion
KIA					
Optima Hybrid					
AM-6, 2.4L, 4cyl	36/40	38	\$950	9	270V Li-Ion
Optima Hybrid EX					
AM-6, 2.4L, 4cyl	35/39	37	\$1,000	9	270V Li-Ion
LEXUS					
ES 300h					
AV-S6, 2.5L, 4cyl	40/39	40	\$900	10	245V Ni-MH
GS 450h					
AV-S6, 3.5L, 6cyl	29/34	31	\$1,350	8	288V Ni-MH
LS 600h L					
AV-S8, 5.0L, 8cyl	19/23	20	\$2,100	5	288V Ni-MH
LINCOLN					
MKZ Hybrid FWD					
AV, 2.0L, 4cyl	38/37	38	\$950	9	275V Ni-MH
MERCEDES-BENZ					
E400 Hybrid					
A-7, 3.5L, 6cyl	24/30	26	\$1,650	7	126V Li-Ion
TOYOTA					
Avalon Hybrid					
AV-S6, 2.5L, 4cyl	40/39	40	\$900	10	245V Ni-MH
Camry Hybrid LE					
AV, 2.5L, 4cyl	43/39	41	\$900	10	245V Ni-MH
Camry Hybrid XLE					
AV, 2.5L, 4cyl	40/38	40	\$900	10	245V Ni-MH
Prius					
AV, 1.8L, 4cyl	51/48	50	\$750	10	202V Ni-MH
LARGE CARS					
BMW					
ActiveHybrid 7L					
A-S8, 3.0L, 6cyl	22/30	25	\$1,700	6	374V Li-Ion
FORD					
C-MAX Hybrid FWD					
AV, 2.0L, 4cyl	42/37	40	\$900	10	280V Li-Ion
MERCEDES-BENZ					
S400 Hybrid					
A-7, 3.5L, 6cyl	19/25	21	\$2,000	5	126V Li-Ion
PORSCHE					
Panamera S Hybrid					
A-8, 3.0L, 6cyl	22/30	25	\$1,700	6	288V Ni-MH
MIDSIZE STATION WAGONS					
TOYOTA					
Prius v					
AV, 1.8L, 4cyl	44/40	42	\$900	10	202V Ni-MH

Manufacturer Model Configuration (trans, eng size,cyl)	MPG		Annual Fuel Cost	GHG Rating	Battery Type/Notes
	City/Hwy	Comb			

STANDARD PICKUP TRUCKS 2WD

CHEVROLET					
Silverado 15 Hybrid 2WD					
AV, 6.0L, 8cyl	20/23	21	\$1,750	5	288V Ni-MH
GMC					
Sierra 15 Hybrid 2WD					
AV, 6.0L, 8cyl	20/23	21	\$1,750	5	288V Ni-MH

STANDARD PICKUP TRUCKS 4WD

CHEVROLET					
Silverado 15 Hybrid 4WD					
AV, 6.0L, 8cyl	20/23	21	\$1,750	5	288V Ni-MH
GMC					
Sierra 15 Hybrid 4WD					
AV, 6.0L, 8cyl	20/23	21	\$1,750	5	288V Ni-MH

SMALL SPORT UTILITY VEHICLES 2WD

LEXUS					
RX 450h					
AV-S6, 3.5L, 6cyl	32/28	30	\$1,400	8	288V Ni-MH

SMALL SPORT UTILITY VEHICLES 4WD

AUDI					
Q5 Hybrid					
A-S8, 2.0L, 4cyl	24/30	26	\$1,650	7	266V Li-Ion
LEXUS					
RX 450h AWD					
AV-S6, 3.5L, 6cyl	30/28	29	\$1,450	8	288V Ni-MH

STANDARD SPORT UTILITY VEHICLES 2WD

CADILLAC					
Escalade Hybrid 2WD					
AV, 6.0L, 8cyl	20/23	21	\$1,750	5	288V Ni-MH
CHEVROLET					
Tahoe Hybrid 2WD					
AV, 6.0L, 8cyl	20/23	21	\$1,750	5	288V Ni-MH
GMC					
Yukon 1500 Hybrid 2WD					
AV, 6.0L, 8cyl	20/23	21	\$1,750	5	288V Ni-MH

Manufacturer Model Configuration (trans, eng size,cyl)	MPG		Annual Fuel Cost	GHG Rating	Battery Type/Notes
	City/Hwy	Comb			

STANDARD SPORT UTILITY VEHICLES 4WD

CADILLAC					
Escalade Hybrid 4WD					
AV, 6.0L, 8cyl	20/23	21	\$1,750	5	288V Ni-MH
CHEVROLET					
Tahoe Hybrid 4WD					
AV, 6.0L, 8cyl	20/23	21	\$1,750	5	288V Ni-MH
GMC					
Yukon 1500 Hybrid 4WD					
AV, 6.0L, 8cyl	20/23	21	\$1,750	5	288V Ni-MH
Yukon Denali 1500 Hybrid 4WD					
AV, 6.0L, 8cyl	20/23	21	\$1,750	5	288V Ni-MH
PORSCHE					
Cayenne S Hybrid					
A-8, 3.0L, 6cyl	20/24	21	\$2,000	5	288V Ni-MH
TOYOTA					
Highlander Hybrid 4WD					
AV, 3.5L, 6cyl	28/28	28	\$1,300	7	288V Ni-MH
VOLKSWAGEN					
Touareg Hybrid					
A-S8, 3.0L, 6cyl	20/24	21	\$2,000	5	288V Ni-MH

COMPRESSED NATURAL GAS VEHICLES

Compressed natural gas (CNG) vehicles produce fewer smog-forming and greenhouse gas pollutants and reduce our dependence on petroleum. CNG fuel is normally dispensed in “equivalent gallons,” where one equivalent gallon is equal to 121.5 cu. ft. of natural gas. Therefore, the fuel economy values are shown in miles per gasoline-equivalent (MPGe). Annual fuel cost estimates are based on an average fuel price of \$2.17 per gasoline-equivalent gallon of CNG. The driving range is shown in miles and represents the distance the vehicle can travel on a full tank (or tanks) of fuel during combined city and highway driving (55% city and 45% highway).

	Transmission Type/Speeds	Engine Size/ Cylinders	MPGe City/Highway/Comb	Annual Fuel cost	Driving Range (miles)
COMPACT CARS					
HONDA					
Civic Natural Gas	A-5	1.8L, 4cyl	27/38/31	\$1,050	193
SPECIAL PURPOSE VEHICLES 2WD					
VPG					
MV-1	A-4	4.6L, 8cyl	NA	NA	NA

FUEL CELL VEHICLES

Fuel cell vehicles (FCVs) may not reach the mass market for a decade or more, but a limited number will be available for sale or lease in 2012-13 to demonstration fleets in areas with a readily accessible hydrogen supply. FCVs are propelled by electric motors powered by fuel cells, which produce electricity from the chemical energy of hydrogen. Fuel cell technology is more efficient than internal combustion engines and environmentally cleaner—the only by-product of a hydrogen fuel cell is water. However, many challenges must be overcome before FCVs are mass-marketed and sold at local dealerships. For more information about FCVs, visit www.fueleconomy.gov and the Fuel Cell Technologies Program Web site at www.eere.energy.gov/hydrogenandfuelcells/.

	Fuel Cell Type	Motor Type & Power	Battery Type Rating	Fuel Type	Miles Per Kilogram City/Hwy/Comb	Driving Range (miles)
MIDSIZE CARS						
HONDA						
FCX Clarity	PEM	Permanent Magnet 100kW AC	288V Li-Ion	Hydrogen	NA	NA

PEM = Proton Exchange Membrane or Polymer Electrolyte Membrane.

ETHANOL FLEXIBLE-FUEL VEHICLES

Ethanol flexible fuel vehicles (FFVs) are designed by the original manufacturer to operate on gasoline, E85, or any mixture of the two fuels. Annual fuel cost is estimated assuming 15,000 miles of travel each year (55% city and 45% highway) and an average fuel cost of \$3.23 per gallon for E85, \$2.45 per gallon for regular unleaded gasoline, and \$2.82 per gallon for premium unleaded gasoline. The price of ethanol is highly variable from region to region; it is typically lower in the Midwestern United States and higher in other areas. Therefore, actual consumer experience may differ significantly from the annual fuel cost estimate presented here.

Fuel economy and driving range values are shown for both gasoline and E85. When operating your FFV on mixtures of gasoline and E85, such as when alternating between using these fuels, your driving range and fuel economy values will be somewhere between those listed for the two fuels, depending on the actual percentage of gasoline and E85 in the tank.

Manufacturer Model Configuration (trans, eng size, cyl)	MPG		Annual Fuel Cost	GHG Rating	Fuel	Range (miles)
	City/Hwy	Comb				

SUBCOMPACT CARS

AUDI

A5 Cabriolet quattro

A-S8, 2.0L, 4cyl	14/20	16	\$3,050	6	E85	270
	20/29	24	\$1,750	6	P	410

A5 quattro

A-S8, 2.0L, 4cyl	14/20	16	\$3,050	6	E85	270
	20/29	24	\$1,750	6	P	410

BENTLEY

Continental GTC

A-S6, 6.0L, 12cyl	8/13	10	\$4,850	2	E85	240
	11/19	14	\$3,000	2	P	330

A-S8, 6.0L, 12cyl	9/15	11	\$4,400	3	E85	260
	12/20	15	\$2,800	3	P	360

Continental Supersports Convertible

A-S6, 6.0L, 12cyl	8/14	10	\$4,850	2	E85	240
	12/19	14	\$3,000	2	P	330

MERCEDES-BENZ

E350 4matic Coupe

A-7, 3.5L, 6cyl	14/20	16	\$3,050	5	E85	280
	19/27	22	\$1,950	5	P	380

E350 Convertible

A-7, 3.5L, 6cyl	13/19	16	\$3,050	5	E85	280
	19/28	22	\$1,950	5	P	380

E350 Coupe

A-7, 3.5L, 6cyl	15/21	17	\$2,850	6	E85	290
	20/28	23	\$1,850	6	P	400

COMPACT CARS

AUDI

A4 quattro

A-S8, 2.0L, 4cyl	14/20	16	\$3,050	6	E85	270
	20/29	24	\$1,750	6	P	410

BENTLEY

Continental GT

A-S6, 6.0L, 12cyl	8/14	10	\$4,850	2	E85	240
	12/19	14	\$3,000	2	P	330

A-S8, 6.0L, 12cyl	9/15	11	\$4,400	3	E85	260
	12/21	15	\$2,800	3	P	360

BUICK

Verano

A-S6, 2.4L, 4cyl	15/23	18	\$2,700	6	E85	290
	21/32	25	\$1,450	6	Gas	400

CADILLAC

ATS

A-S6, 3.6L, 6cyl	14/21	16	\$3,050	6	E85	260
	19/28	22	\$1,650	5	Gas	360

ATS AWD

A-S6, 3.6L, 6cyl	13/20	16	\$3,050	5	E85	260
	18/26	21	\$1,750	5	Gas	350

Manufacturer Model Configuration (trans, eng size, cyl)	MPG		Annual Fuel Cost	GHG Rating	Fuel	Range (miles)
	City/Hwy	Comb				

CHRYSLER

200 Convertible

A-6, 3.6L, 6cyl	14/21	16	\$3,050	6	E85	270
	19/29	22	\$1,650	5	Gas	370

FORD

Focus FWD FFV

AM-6, 2.0L, 4cyl	20/28	23	\$2,100	8	E85	290
	27/38	31	\$1,200	8	Gas	380

A-S6, 2.0L, 4cyl	20/28	23	\$2,100	8	E85	290
	27/38	31	\$1,200	8	Gas	380

M-5, 2.0L, 4cyl	19/26	22	\$2,200	8	E85	270
	26/36	30	\$1,200	8	Gas	370

Focus SFE FWD FFV

AM-6, 2.0L, 4cyl	20/28	23	\$2,100	8	E85	280
	28/40	33	\$1,100	8	Gas	410

MERCEDES-BENZ

C300 4matic

A-7, 3.5L, 6cyl	13/18	15	\$3,250	5	E85	260
	19/26	22	\$1,950	5	P	380

C350

A-7, 3.5L, 6cyl	15/21	17	\$2,850	6	E85	290
	20/29	23	\$1,850	6	P	400

MIDSIZE CARS

BENTLEY

Continental Flying Spur

A-S6, 6.0L, 12cyl	8/13	10	\$4,850	2	E85	240
	11/19	14	\$3,000	2	P	330

BUICK

LaCrosse

A-S6, 3.6L, 6cyl	13/19	15	\$3,250	5	E85	280
	17/27	21	\$1,750	5	Gas	390

LaCrosse AWD

A-S6, 3.6L, 6cyl	12/18	14	\$3,450	4	E85	270
	17/25	20	\$1,850	5	Gas	390

Regal

A-S6, 2.0L, 4cyl	13/20	15	\$3,250	5	E85	280
	18/29	22	\$1,650	5	Gas	410

A-S6, 2.0L, 4cyl	13/20	15	\$3,250	5	E85	280
	18/29	22	\$1,650	5	Gas	410

M-6, 2.0L, 4cyl	15/22	17	\$2,850	6	E85	320
	20/32	24	\$1,550	6	Gas	450

A-S6, 2.4L, 4cyl	15/22	17	\$2,850	6	E85	320
	19/31	23	\$1,600	6	Gas	430

CHRYSLER

200

A-6, 3.6L, 6cyl	14/21	16	\$3,050	6	E85	270
	19/29	22	\$1,650	5	Gas	370

Manufacturer Model Configuration (trans, eng size,cyl)	MPG		Annual Fuel Cost	GHG Rating	Fuel	Range (miles)
	City/Hwy	Comb				

DODGE

Avenger

A-6, 3.6L, 6cyl	14/21	16	\$3,050	6	E85	270
	19/29	22	\$1,650	5	Gas	370

Dart

A-6, 2.0L, 4cyl	17/24	19	\$2,550	7	E85	300
	24/34	27	\$1,350	7	Gas	430

JAGUAR

XF FFV

A-S8, 5.0L, 8cyl	11/17	13	\$3,750	4	E85	234
	15/23	18	\$2,350	4	P	324

MERCEDES-BENZ

E350

A-7, 3.5L, 6cyl	14/23	17	\$2,850	6	E85	360
	20/30	23	\$1,850	6	P	490

E350 4Matic

A-7, 3.5L, 6cyl	14/21	16	\$3,050	6	E85	340
	19/29	22	\$1,950	5	P	460

LARGE CARS

CHEVROLET

Impala

A-6, 3.6L, 6cyl	13/22	16	\$3,050	6	E85	280
	18/30	22	\$1,650	5	Gas	390

CHRYSLER

300

A-8, 3.6L, 6cyl	14/23	17	\$2,850	6	E85	330
	19/31	23	\$1,600	6	Gas	450

300 AWD

A-8, 3.6L, 6cyl	14/20	16	\$3,050	5	E85	310
	18/27	21	\$1,750	5	Gas	410

DODGE

Charger

A-5, 3.6L, 6cyl	13/19	15	\$3,250	5	E85	290
	18/27	21	\$1,750	5	Gas	410

Charger AWD

A-8, 3.6L, 6cyl	14/23	17	\$2,850	6	E85	330
	19/31	23	\$1,600	6	Gas	450

Charger AWD

A-8, 3.6L, 6cyl	14/20	16	\$3,050	5	E85	310
	18/27	21	\$1,750	5	Gas	410

FORD

Taurus AWD FFV

A-S6, 3.5L, 6cyl	13/19	16	\$3,050	5	E85	270
	18/26	21	\$1,750	5	Gas	360

Taurus FWD FFV

A-S6, 3.5L, 6cyl	13/21	16	\$3,050	5	E85	270
	19/29	23	\$1,600	6	Gas	440

JAGUAR

XJ FFV

A-S8, 5.0L, 8cyl	11/17	13	\$3,750	4	E85	274
	15/23	18	\$2,350	4	P	380

XJL FFV

A-S8, 5.0L, 8cyl	11/18	13	\$3,750	4	E85	274
	16/25	19	\$2,250	4	P	401

A-S8, 5.0L, 8cyl	11/17	13	\$3,750	4	E85	274
	15/23	18	\$2,350	4	P	380

SMALL STATION WAGONS

AUDI

allroad quattro

A-S8, 2.0L, 4cyl	14/18	15	\$3,250	5	E85	250
	20/27	23	\$1,850	6	P	390

Manufacturer Model Configuration (trans, eng size,cyl)	MPG		Annual Fuel Cost	GHG Rating	Fuel	Range (miles)
	City/Hwy	Comb				

STANDARD PICKUP TRUCKS 2WD

CHEVROLET

Silverado C15 2WD

A-4, 4.8L, 8cyl	10/14	12	\$4,050	3	E85	310
	14/19	16	\$2,300	3	Gas	410

A-6, 5.3L, 8cyl	11/16	13	\$3,750	4	E85	330
	15/21	17	\$2,150	4	Gas	440

A-6, 6.2L, 8cyl	9/13	11	\$4,400	3	E85	290
	13/18	14	\$2,600	2	Gas	370

Silverado C15 XFE 2WD

A-6, 5.3L, 8cyl	11/16	13	\$3,750	4	E85	340
	15/22	18	\$2,050	4	Gas	480

FORD

F150 Pickup 2WD FFV

A-S6, 3.7L, 6cyl	12/17	14	\$3,450	4	E85	360
	17/23	19	\$1,950	4	Gas	490

A-6, 3.7L, 6cyl	12/17	14	\$3,450	4	E85	360
	17/23	19	\$1,950	4	Gas	490

A-S6, 5.0L, 8cyl	11/15	13	\$3,750	4	E85	360
	15/21	17	\$2,150	4	Gas	440

A-6, 5.0L, 8cyl	11/15	13	\$3,750	4	E85	340
	15/21	17	\$2,150	4	Gas	440

GMC

Sierra C15 2WD

A-4, 4.8L, 8cyl	10/14	12	\$4,050	3	E85	310
	14/19	16	\$2,300	3	Gas	410

A-6, 5.3L, 8cyl	11/16	13	\$3,750	4	E85	330
	15/21	17	\$2,150	4	Gas	440

A-6, 6.2L, 8cyl	9/13	11	\$4,400	3	E85	290
	13/18	14	\$2,600	2	Gas	370

Sierra C15 XFE 2WD

A-6, 5.3L, 8cyl	11/16	13	\$3,750	4	E85	340
	15/22	18	\$2,050	4	Gas	480

NISSAN

Titan 2WD

A-5, 5.6L, 8cyl	9/13	11	\$4,400	3	E85	310
	13/18	15	\$2,450	3	Gas	420

RAM

1500 2WD

A-8, 3.6L, 6cyl	12/17	14	\$3,450	5	E85	360
	17/25	20	\$1,850	5	Gas	520

A-6, 4.7L, 8cyl	10/12	11	\$4,400	3	E85	290
	14/20	16	\$2,300	3	Gas	420

STANDARD PICKUP TRUCKS 4WD

CHEVROLET

Silverado K15 4WD

A-4, 4.8L, 8cyl	10/13	11	\$4,400	3	E85	280
	13/18	15	\$2,450	3	Gas	390

A-6, 5.3L, 8cyl	11/16	13	\$3,750	4	E85	330
	15/21	17	\$2,150	4	Gas	440

A-6, 6.2L, 8cyl	9/13	10	\$4,850	2	E85	260
	12/18	14	\$2,600	2	Gas	370

Manufacturer Model Configuration (trans, eng size,cyl)	MPG		Annual Fuel Cost	GHG Rating	Fuel	Range (miles)
	City/Hwy	Comb				

FORD

F150 Pickup 4WD FFV

A-S6, 3.7L, 6cyl	11/15 16/21	13 18	\$3,750 \$2,050	4 4	E85 Gas	340 470
A-6, 3.7L, 6cyl	11/15 16/21	13 18	\$3,750 \$2,050	4 4	E85 Gas	340 470
A-S6, 5.0L, 8cyl	10/14 14/19	12 16	\$4,050 \$2,300	3 3	E85 Gas	360 420
A-6, 5.0L, 8cyl	10/14 14/19	12 16	\$4,050 \$2,300	3 3	E85 Gas	310 420

GMC

Sierra K15 4WD

A-4, 4.8L, 8cyl	10/13 13/18	11 15	\$4,400 \$2,450	3 3	E85 Gas	280 390
A-6, 5.3L, 8cyl	11/16 15/21	13 17	\$3,750 \$2,150	4 4	E85 Gas	330 440
A-6, 6.2L, 8cyl	9/13 12/18	10 14	\$4,850 \$2,600	2 2	E85 Gas	260 370

Sierra K15 AWD

A-6, 6.2L, 8cyl	9/13 12/18	10 14	\$4,850 \$2,600	2 2	E85 Gas	260 370
-----------------	---------------	----------	--------------------	--------	------------	------------

NISSAN

Titan 4WD

A-5, 5.6L, 8cyl	9/12 12/17	10 14	\$4,850 \$2,600	2 2	E85 Gas	280 390
-----------------	---------------	----------	--------------------	--------	------------	------------

RAM

1500 4WD

A-8, 3.6L, 6cyl	11/16 16/23	13 19	\$3,750 \$1,950	4 4	E85 Gas	340 500
A-6, 4.7L, 8cyl	10/12 14/19	11 16	\$4,400 \$2,300	3 3	E85 Gas	290 420

TOYOTA

Tundra 4WD FFV

A-S6, 5.7L, 8cyl	9/12 13/18	11 15	\$4,400 \$2,450	3 3	E85 Gas	290 400
------------------	---------------	----------	--------------------	--------	------------	------------

VANS, CARGO TYPE

CHEVROLET

Express 1500 2WD Cargo

A-4, 5.3L, 8cyl	10/13 13/18	11 15	\$4,400 \$2,450	3 3	E85 Gas	340 470
-----------------	----------------	----------	--------------------	--------	------------	------------

Express 1500 2WD Conversion Cargo

A-4, 5.3L, 8cyl	10/13 13/17	11 14	\$4,400 \$2,600	3 2	E85 Gas	340 430
-----------------	----------------	----------	--------------------	--------	------------	------------

Express 1500 AWD Cargo

A-4, 5.3L, 8cyl	9/12 13/17	10 14	\$4,850 \$2,600	2 2	E85 Gas	310 430
-----------------	---------------	----------	--------------------	--------	------------	------------

Express 1500 AWD Conversion Cargo

A-4, 5.3L, 8cyl	9/12 13/17	10 14	\$4,850 \$2,600	2 2	E85 Gas	310 430
-----------------	---------------	----------	--------------------	--------	------------	------------

Express 2500 2WD Conversion Cargo

A-6, 6.0L, 8cyl	7/11 10/15	9 12	\$5,400 \$3,050	1 1	E85 Gas	280 370
-----------------	---------------	---------	--------------------	--------	------------	------------

FORD

E150 Van FFV

A-4, 4.6L, 8cyl	9/12 13/17	10 15	\$4,850 \$2,450	2 3	E85 Gas	460 500
A-4, 5.4L, 8cyl	9/12 12/16	10 14	\$4,850 \$2,600	2 2	E85 Gas	330 460

E250 Van FFV

A-4, 4.6L, 8cyl	9/12 13/17	10 15	\$4,850 \$2,450	2 3	E85 Gas	330 500
A-4, 5.4L, 8cyl	9/12 12/16	10 14	\$4,850 \$2,600	2 2	E85 Gas	330 460

Manufacturer Model Configuration (trans, eng size,cyl)	MPG		Annual Fuel Cost	GHG Rating	Fuel	Range (miles)
	City/Hwy	Comb				

E350 Van FFV

A-4, 5.4L, 8cyl	9/12 12/16	10 13	\$4,850 \$2,850	2 2	E85 Gas	330 330
-----------------	---------------	----------	--------------------	--------	------------	------------

GMC

Savana 1500 2WD Conversion (cargo)

A-4, 5.3L, 8cyl	10/13 13/17	11 14	\$4,400 \$2,600	3 2	E85 Gas	340 430
-----------------	----------------	----------	--------------------	--------	------------	------------

Savana 1500 AWD (cargo)

A-4, 5.3L, 8cyl	9/12 13/17	10 14	\$4,850 \$2,600	2 2	E85 Gas	310 430
-----------------	---------------	----------	--------------------	--------	------------	------------

Savana 1500 AWD Conversion (cargo)

A-4, 5.3L, 8cyl	9/12 13/17	10 14	\$4,850 \$2,600	2 2	E85 Gas	310 430
-----------------	---------------	----------	--------------------	--------	------------	------------

Savana 1500 2WD (cargo)

A-4, 5.3L, 8cyl	10/13 13/18	11 15	\$4,400 \$2,450	3 3	E85 Gas	340 470
-----------------	----------------	----------	--------------------	--------	------------	------------

Savana 2500 2WD Conversion (cargo)

A-6, 6.0L, 8cyl	7/11 10/15	9 12	\$5,400 \$3,050	1 1	E85 Gas	280 370
-----------------	---------------	---------	--------------------	--------	------------	------------

VANS, PASSENGER TYPE

CHEVROLET

Express 1500 2WD Passenger

A-4, 5.3L, 8cyl	10/13 13/17	11 14	\$4,400 \$2,600	3 2	E85 Gas	340 430
-----------------	----------------	----------	--------------------	--------	------------	------------

Express 1500 AWD Passenger

A-4, 5.3L, 8cyl	9/12 13/17	10 14	\$4,850 \$2,600	2 2	E85 Gas	310 430
-----------------	---------------	----------	--------------------	--------	------------	------------

Express 2500 2WD Passenger

A-6, 4.8L, 8cyl	8/12 11/17	10 13	\$4,850 \$2,850	2 2	E85 Gas	310 400
A-6, 6.0L, 8cyl	8/11 11/16	9 13	\$5,400 \$2,850	1 2	E85 Gas	280 400

Express 3500 2WD Passenger

A-6, 4.8L, 8cyl	8/12 11/17	10 13	\$4,850 \$2,850	2 2	E85 Gas	310 400
A-6, 6.0L, 8cyl	8/11 11/16	9 12	\$5,400 \$3,050	1 1	E85 Gas	280 370

FORD

E150 Wagon FFV

A-4, 4.6L, 8cyl	9/12 13/16	10 14	\$4,850 \$2,600	2 2	E85 Gas	330 460
A-4, 5.4L, 8cyl	9/12 12/16	10 13	\$4,850 \$2,850	2 2	E85 Gas	330 430

E350 Wagon FFV

A-4, 5.4L, 8cyl	9/11 11/15	10 13	\$4,850 \$2,850	2 2	E85 Gas	330 430
-----------------	---------------	----------	--------------------	--------	------------	------------

GMC

Savana 1500 2WD (Passenger)

A-4, 5.3L, 8cyl	10/13 13/17	11 14	\$4,400 \$2,600	3 2	E85 Gas	340 430
-----------------	----------------	----------	--------------------	--------	------------	------------

Savana 1500 AWD (Passenger)

A-4, 5.3L, 8cyl	9/12 13/17	10 14	\$4,850 \$2,600	2 2	E85 Gas	310 430
-----------------	---------------	----------	--------------------	--------	------------	------------

Savana 2500 2WD (Passenger)

A-6, 4.8L, 8cyl	8/12 11/17	10 13	\$4,850 \$2,850	2 2	E85 Gas	310 400
A-6, 6.0L, 8cyl	8/11 11/16	9 13	\$5,400 \$2,850	1 2	E85 Gas	280 400

Savana 3500 2WD (Passenger)

A-6, 4.8L, 8cyl	8/12 11/17	10 13	\$4,850 \$2,850	2 2	E85 Gas	310 400
A-6, 6.0L, 8cyl	8/11 11/16	9 12	\$5,400 \$3,050	1 1	E85 Gas	280 370

Manufacturer Model Configuration (trans, eng size,cyl)	MPG		Annual Fuel Cost	GHG Rating	Fuel	Range (miles)
	City/Hwy	Comb				

MINIVANS 2WD

CHRYSLER
Town and Country
 A-6, 3.6L, 6cyl 12/18 14 \$3,450 4 E85 280
 17/25 20 \$1,850 5 Gas 400

DODGE
Grand Caravan
 A-6, 3.6L, 6cyl 12/18 14 \$3,450 5 E85 280
 17/25 20 \$1,850 5 Gas 400

RAM
C/V
 A-6, 3.6L, 6cyl 12/18 14 \$3,450 5 E85 280
 17/25 20 \$1,850 5 Gas 400

VOLKSWAGEN
Routan
 A-6, 3.6L, 6cyl 12/18 14 \$3,450 4 E85 280
 17/25 20 \$1,850 5 Gas 400

SMALL SPORT UTILITY VEHICLES 2WD

CHEVROLET
Captiva FWD
 A-6, 2.4L, 4cyl 15/22 18 \$2,700 6 E85 350
 20/28 23 \$1,600 6 Gas 450
 A-6, 3.0L, 6cyl 12/17 14 \$3,450 4 E85 270
 17/24 19 \$1,950 4 Gas 370

Equinox FWD
 A-6, 2.4L, 4cyl 15/22 18 \$2,700 6 E85 340
 22/32 26 \$1,400 7 Gas 490
 A-6, 3.6L, 6cyl 13/22 16 \$3,050 6 E85 330
 17/24 20 \$1,850 5 Gas 420

DODGE
Journey FWD
 A-6, 3.6L, 6cyl 12/18 15 \$3,250 5 E85 310
 17/25 20 \$1,850 5 Gas 410

GMC
Terrain FWD
 A-6, 2.4L, 4cyl 15/22 18 \$2,700 6 E85 340
 22/32 26 \$1,400 7 Gas 490
 A-6, 3.6L, 6cyl 13/22 16 \$3,050 6 E85 330
 17/24 20 \$1,850 5 Gas 420

SMALL SPORT UTILITY VEHICLES 4WD

AUDI
Q5
 A-S8, 2.0L, 4cyl 14/19 16 \$3,050 5 E85 310
 20/28 23 \$1,850 6 P 450

CHEVROLET
Captiva AWD
 A-6, 3.0L, 6cyl 11/16 13 \$3,750 4 E85 220
 16/22 18 \$2,050 4 Gas 300

Equinox AWD
 A-6, 2.4L, 4cyl 14/20 17 \$2,850 6 E85 230
 20/29 23 \$1,600 6 Gas 430
 A-6, 3.6L, 6cyl 12/17 14 \$3,450 4 E85 290
 16/23 19 \$1,950 4 Gas 400

GMC
Terrain AWD
 A-6, 2.4L, 4cyl 14/20 17 \$2,850 6 E85 320
 20/29 23 \$1,600 6 Gas 430
 A-6, 3.6L, 6cyl 12/17 14 \$3,450 4 E85 290
 16/23 19 \$1,950 4 Gas 400

Manufacturer Model Configuration (trans, eng size,cyl)	MPG		Annual Fuel Cost	GHG Rating	Fuel	Range (miles)
	City/Hwy	Comb				

STANDARD SPORT UTILITY VEHICLES 2WD

CADILLAC
Escalade 2WD
 A-6, 6.2L, 8cyl 10/15 12 \$4,050 3 E85 310
 14/18 16 \$2,300 3 Gas 410

Escalade ESV 2WD
 A-6, 6.2L, 8cyl 10/15 12 \$4,050 3 E85 380
 14/18 16 \$2,300 3 Gas 510

SRX 2WD
 A-S6, 3.6L, 6cyl 12/18 14 \$3,450 5 E85 300
 17/24 19 \$1,950 4 Gas 400

CHEVROLET
Avalanche 1500 2WD
 A-6, 5.3L, 8cyl 11/16 13 \$3,750 4 E85 410
 15/21 17 \$2,150 4 Gas 540

Suburban 1500 2WD
 A-6, 5.3L, 8cyl 11/16 13 \$3,750 4 E85 410
 15/21 17 \$2,150 4 Gas 540

Tahoe 1500 2WD
 A-6, 5.3L, 8cyl 11/16 13 \$3,750 4 E85 330
 15/21 17 \$2,150 4 Gas 430

DODGE
Durango 2WD
 A-5, 3.6L, 6cyl 12/17 14 \$3,450 4 E85 350
 16/23 19 \$1,950 4 Gas 470

FORD
Expedition 2WD FFV
 A-6, 5.4L, 8cyl 10/14 12 \$4,050 3 E85 340
 14/20 16 \$2,300 3 Gas 450

Explorer 2WD FFV
 A-S6, 3.5L, 6cyl 13/18 15 \$3,250 5 E85 260
 17/24 20 \$1,850 5 Gas 370

GMC
Yukon 1500 2WD
 A-6, 5.3L, 8cyl 11/16 13 \$3,750 4 E85 330
 15/21 17 \$2,150 4 Gas 430
 A-6, 6.2L, 8cyl 10/15 12 \$4,050 3 E85 310
 14/18 16 \$2,300 3 Gas 410

Yukon XL 1500 2WD
 A-6, 5.3L, 8cyl 11/16 13 \$3,750 4 E85 410
 15/21 17 \$2,150 4 Gas 540
 A-6, 6.2L, 8cyl 10/15 12 \$4,050 3 E85 380
 14/18 16 \$2,300 3 Gas 510

JEEP
Grand Cherokee 2WD
 A-5, 3.6L, 6cyl 13/17 14 \$3,450 5 E85 350
 17/23 19 \$1,950 4 Gas 470

LINCOLN
Navigator 2WD FFV
 A-6, 5.4L, 8cyl 10/14 12 \$4,050 3 E85 340
 14/20 16 \$2,300 3 Gas 450

NISSAN
Armada 2WD
 A-5, 5.6L, 8cyl 9/13 11 \$4,400 3 E85 310
 12/19 15 \$2,450 3 Gas 420

Manufacturer Model Configuration (trans, eng size,cyl)	MPG		Annual Fuel Cost	GHG Rating	Fuel	Range (miles)
	City/Hwy	Comb				
STANDARD SPORT UTILITY VEHICLES 4WD						
CADILLAC						
Escalade AWD						
A-6, 6.2L, 8cyl	10/14	12	\$4,050	3	E85	310
	13/18	15	\$2,450	3	Gas	380
Escalade ESV AWD						
A-6, 6.2L, 8cyl	9/13	10	\$4,850	2	E85	320
	13/18	14	\$2,600	2	Gas	450
Escalade Ext AWD						
A-6, 6.2L, 8cyl	9/13	10	\$4,850	2	E85	320
	13/18	14	\$2,600	2	Gas	450
SRX AWD						
A-S6, 3.6L, 6cyl	12/17	14	\$3,450	4	E85	300
	16/23	18	\$2,050	4	Gas	380
CHEVROLET						
Avalanche 1500 4WD						
A-6, 5.3L, 8cyl	11/16	13	\$3,750	4	E85	410
	15/21	17	\$2,150	4	Gas	540
Suburban 1500 4WD						
A-6, 5.3L, 8cyl	11/16	13	\$3,750	4	E85	410
	15/21	17	\$2,150	4	Gas	540
Tahoe 1500 4WD						
A-6, 5.3L, 8cyl	11/16	13	\$3,750	4	E85	330
	15/21	17	\$2,150	4	Gas	430
DODGE						
Durango 4WD						
A-5, 3.6L, 6cyl	12/17	14	\$3,450	4	E85	350
	16/23	19	\$1,950	4	Gas	470
FORD						
Expedition 4WD FFV						
A-6, 5.4L, 8cyl	9/13	11	\$4,400	3	E85	310
	13/18	15	\$2,450	3	Gas	420
Explorer AWD FFV						
A-S6, 3.5L, 6cyl	12/17	14	\$3,450	4	E85	260
	17/23	19	\$1,950	4	Gas	350
GMC						
Yukon 1500 4WD						
A-6, 5.3L, 8cyl	11/16	13	\$3,750	4	E85	330
	15/21	17	\$2,150	4	Gas	430
Yukon Denali 1500 AWD						
A-6, 6.2L, 8cyl	10/14	12	\$4,050	3	E85	310
	13/18	15	\$2,450	3	Gas	380
Yukon XL 1500 4WD						
A-6, 5.3L, 8cyl	11/16	13	\$3,750	4	E85	410
	15/21	17	\$2,150	4	Gas	540
Yukon XL 1500 AWD						
A-6, 6.2L, 8cyl	9/13	10	\$4,850	2	E85	320
	13/18	14	\$2,600	2	Gas	450
JEEP						
Grand Cherokee 4WD						
A-5, 3.6L, 6cyl	12/17	14	\$3,450	4	E85	350
	16/23	19	\$1,950	4	Gas	470
LINCOLN						
Navigator 4WD FFV						
A-6, 5.4L, 8cyl	9/13	11	\$4,400	3	E85	310
	13/18	15	\$2,450	3	Gas	420
MERCEDES-BENZ						
ML350 4matic						
A-7, 3.5L, 6cyl	13/17	15	\$3,250	5	E85	370
	18/23	20	\$2,100	5	P	490

Manufacturer Model Configuration (trans, eng size,cyl)	MPG		Annual Fuel Cost	GHG Rating	Fuel	Range (miles)
	City/Hwy	Comb				
NISSAN						
Armada 4WD						
A-5, 5.6L, 8cyl	9/13	11	\$4,400	2	E85	310
	12/18	14	\$2,600	2	Gas	390
TOYOTA						
Sequoia 4WD FFV						
A-S6, 5.7L, 8cyl	9/13	10	\$4,850	3	E85	260
	13/17	14	\$2,600	2	Gas	370

INDEX

Interior Volume (cu.ft.)

Passenger / Cargo

2dr 4dr Hatch Pg

ACURA

ILX	89/12		10
ILX Hybrid	89/12		10,29
MDX 4WD			21
RDX 2WD			20
RDX 4WD			21
TL 2WD	98/13		12
TL 4WD	98/13		12
TSX	95/14		10
TSX Wagon	94/31		16
ZDX 4WD			21

ASTON MARTIN

DB9	78/5		7
V8 Vantage			6
V8 Vantage S			6

AUDI

A3	89/20		5,16,26
A3 quattro	89/20		16
A4	91/12		10
A4 quattro	91/12		10,32
A5 Cabriolet	81/10		8
A5 Cabriolet quattro	81/10		8,32
A5 quattro	84/12		8,32
A6	98/16		12
A6 quattro	98/16		12
A7 quattro		94/25	12
A8	100/15		12
A8 L	107/15		15
allroad quattro	90/28		16,33
Q5			21,35
Q5 Hybrid			21,30
Q7			23,26
RS 5	84/13		8
RS 5 Cabriolet	81/10		8
S4	90/13		10
S5	84/13		8
S5 Cabriolet	81/10		8
S6	98/16		12
S7		94/25	12
S8	100/15		12
TT Coupe quattro	74/13		8
TT Roadster quattro			6
TT RS Coupe		74/13	8

BENTLEY

Continental Flying Spur	102/13		12,32
Continental GT	89/11		10,32
Continental GTC	86/7		8,32
Continental Supersports Convertible	86/7		8,32
Mulsanne	100/11		12

BMW

128ci Convertible	79/8		8
128i	86/10		8
135i	86/10		8
135i Convertible	79/8		8
320i	96/13		10
320i xDrive	96/13		10
328i	96/13		10
328i Convertible	88/11		8
328i Coupe	88/16		8
328i Coupe xDrive	88/11		8
328i xDrive	96/13		10
335i	96/13		10
335i Convertible	84/9		8
335i Coupe	88/11		8

Interior Volume (cu.ft.)

Passenger / Cargo

2dr 4dr Hatch Pg

335i Coupe xDrive	88/11		8
335i xDrive	96/13		10
335is Convertible	84/9		8
335is Coupe	89/11		8
528i	102/14		12
528i xDrive	102/14		12
535i	102/14		12
535i Gran Turismo	112/10		15
535i xDrive	102/14		12
535i xDrive Gran Turismo	112/10		15
550i	102/14		12
550i Gran Turismo	112/10		15
550i xDrive	102/14		12
550i xDrive Gran Turismo	112/10		15
640i Convertible	89/12		8
640i Coupe	87/13		8
640i Gran Coupe	97/16		10
650i Convertible	88/12		8
650i Convertible xDrive	88/12		8
650i Coupe	87/13		8
650i Coupe xDrive	87/13		8
650i Gran Coupe	97/16		10
650i xDrive Gran Coupe	97/16		10
740i	107/17		15
740Li	115/18		15
740Li xDrive	115/18		15
750i	106/14		15
750i xDrive	106/14		15
750Li	115/14		15
750Li xDrive	115/14		15
760Li	115/14		15
ActiveHybrid 3	96/10		10,29
ActiveHybrid 5	102/10		12,29
ActiveHybrid 7L	115/10		15,29
Alpina B7 LWB	115/14		15
Alpina B7 LWB xDrive	115/14		15
Alpina B7 SWB	106/14		15
Alpina B7 SWB xDrive	106/14		15
M3 Convertible	84/9		8
M3 Coupe	88/11		8
M5	102/14		12
M6 Convertible	88/12		8
M6 Coupe	88/11		8
M6 Gran Coupe	97/16		10
X1 sDrive28i		98/25	15
X1 xDrive28i		98/25	15
X1 xDrive35i		98/25	15
X3 xDrive28i			21
X3 xDrive35i			21
X5 M			23
X5 xDrive35d			23,26
X5 xDrive35i			23
X5 xDrive50i			23
X6 M			23
X6 xDrive35i			23
X6 xDrive50i			24
Z4 sDrive28i			6
Z4 sDrive35i			6
Z4 sDrive35is			6

BUGATTI

Veyron			6
--------	--	--	---

BUICK

Enclave AWD			24
Enclave FWD			23

Interior Volume (cu.ft.)

Passenger / Cargo

2dr 4dr Hatch Pg

Encore			20
Encore AWD			21
LaCrosse	100/16		13,32
LaCrosse AWD	100/16		13,32
LaCrosse eAssist	100/16		13,29
Regal	98/13		13,32
Regal eAssist	98/13		13,29
Verano	91/14		10,32

BYD

e6			20,27
----	--	--	-------

CADILLAC

ATS	91/10		10,32
ATS AWD	91/10		10,32
CTS	99/15	99/15	13
CTS AWD	97/14		13
CTS Wagon	97/28		17
CTS Wagon AWD	97/29		17
Escalade 2WD			23,35
Escalade AWD			24,36
Escalade ESV 2WD			23,35
Escalade ESV AWD			24,36
Escalade Ext AWD			24,36
Escalade Hybrid 2WD			23,30
Escalade Hybrid 4WD			24,30
SRX 2WD			23,35
SRX AWD			24,36
XTS	104/18		15
XTS AWD	104/18		15
XTS Hearse			19
XTS Limo			19

CHEVROLET

Avalanche 1500 2WD			23,35
Avalanche 1500 4WD			24,36
Camaro	93/11		10
Captiva AWD			21,35
Captiva FWD			20,35
Corvette			6
Cruze	94/16		13
Cruze Eco	94/16		13
Equinox AWD			21,35
Equinox FWD			20,35
Express 1500 2WD Cargo			5,18,34
Express 1500 2WD Conversion Cargo			19,34
Express 1500 2WD Passenger			5,19,34
Express 1500 AWD Cargo			19,34
Express 1500 AWD Conversion Cargo			19,34
Express 1500 AWD Passenger			5,19,34
Express 2500 2WD Conversion Cargo			19,34
Express 2500 2WD Passenger			19,34
Express 3500 2WD Passenger			19,34
Impala	105/19		15,33
Malibu	95/16		13
Malibu eAssist	95/16		13,29
Silverado 15 Hybrid 2WD			5,17,30
Silverado 15 Hybrid 4WD			5,18,30
Silverado C15 2WD			17,33

INDEX

Interior Volume (cu.ft.)			
Passenger / Cargo			
	2dr	4dr	Pg
Silverado C15 XFE 2WD			17,33
Silverado K15 4WD			18,33
Sonic	91/14		10
Sonic 5	91/19		13
Sonic RS	91/19		13
Spark	86/11		5,9
Suburban 1500 2WD			23,35
Suburban 1500 4WD			24,36
Suburban 2500 2WD			23
Suburban 2500 4WD			24
Tahoe 1500 2WD			23,35
Tahoe 1500 4WD			24,36
Tahoe Hybrid 2WD			23,30
Tahoe Hybrid 4WD			24,30
Traverse AWD			24
Traverse FWD			23
Volt	90/18		10,28

CHRYSLER

200	100/14		13,32
200 Convertible	88/13		10,32
300	106/16		15,33
300 AWD	106/16		15,33
300 SRT8	106/16		15
Town and Country			19,35

CODA AUTOMOTIVE

CODA	72/14		9,27
------	-------	--	------

DODGE

Avenger	100/13		13,33
Challenger	94/16		13
Challenger SRT8	94/16		13
Charger	105/16		15,33
Charger AWD	105/16		15,33
Charger SRT8	105/16		15
Dart	97/13		13,33
Dart Aero	97/13		13
Durango 2WD			23,35
Durango 4WD			24,36
Grand Caravan			20,35
Journey AWD			21
Journey FWD			20,35

FERRARI

458 Italia			6
458 Spider			6
California	75/7		7
F12			6
FF	90/22		13

FIAT

500	76/7		7
500 Abarth	76/7		7
500e	76/7		7,27

FORD

C-MAX Energi Plug-in Hybrid	100/19		13,28
C-MAX Hybrid FWD	100/24		5,15,29
E150 Van FFV			19,34
E150 Wagon FFV			5,19,34
E250 Van FFV			19,34
E350 Van			19
E350 Van FFV			19,34
E350 Wagon			19
E350 Wagon FFV			19,34
Edge AWD			21
Edge FWD			20

Interior Volume (cu.ft.)			
Passenger / Cargo			
	2dr	4dr	Pg
Escape AWD			21
Escape FWD			20
Expedition 2WD FFV			23,35
Expedition 4WD FFV			24,36
Explorer 2WD FFV			23,35
Explorer AWD			24
Explorer AWD FFV			24,36
Explorer FWD			23
F150 Pickup 2WD			18
F150 Pickup 2WD FFV			18,33
F150 Pickup 4WD			18
F150 Pickup 4WD FFV			18,34
F150 Raptor Pickup 4WD			18
Fiesta FWD	85/12	85/15	9
Fiesta SFE FWD	85/12	85/15	9
Flex AWD			24
Flex FWD			23
Focus Electric		90/14	5,10,27
Focus FWD	90/13	90/23	10
Focus FWD FFV	90/13	90/23	10,32
Focus SFE FWD FFV	90/13	90/23	10,32
Fusion AWD	100/16		13
Fusion Energi Plug-in Hybrid	103/8		13,28
Fusion FWD	100/16		13
Fusion Hybrid FWD	101/16		13,29
Mustang	83/13		9
Mustang Convertible	81/9		9
Taurus AWD	102/20		16
Taurus AWD FFV	102/20		16,33
Taurus FWD	102/20		16
Taurus FWD FFV	102/20		16,33
Transit Connect Van			19
Transit Connect Wagon FWD			19

Fiesta FWD	85/12	85/15	9
Flex AWD			24
Flex FWD			23
Focus Electric		90/14	5,10,27
Focus FWD	90/13	90/23	10
Focus FWD FFV	90/13	90/23	10,32
Focus SFE FWD FFV	90/13	90/23	10,32
Fusion AWD	100/16		13
Fusion Energi Plug-in Hybrid	103/8		13,28
Fusion FWD	100/16		13
Fusion Hybrid FWD	101/16		13,29
Mustang	83/13		9
Mustang Convertible	81/9		9
Taurus AWD	102/20		16
Taurus AWD FFV	102/20		16,33
Taurus FWD	102/20		16
Taurus FWD FFV	102/20		16,33
Transit Connect Van			19
Transit Connect Wagon FWD			19

GMC

Acadia AWD			24
Acadia FWD			23
Savana 1500 2WD Conversion (cargo)			19,34
Savana 1500 AWD (cargo)			19,34
Savana 1500 AWD Conversion (cargo)			19,34
Savana 1500 2WD (cargo)			5,19,34
Savana 1500 2WD (Passenger)			5,19,34
Savana 1500 AWD (Passenger)			5,19,34
Savana 2500 2WD (Passenger)			19,34
Savana 2500 2WD Conversion (cargo)			19,34
Savana 3500 2WD (Passenger)			19,34
Sierra 15 Hybrid 2WD			5,18,30
Sierra 15 Hybrid 4WD			5,18,30
Sierra C15 2WD			18,33
Sierra C15 XFE 2WD			18,33
Sierra K15 4WD			18,34
Sierra K15 AWD			18,34
Terrain AWD			21,35
Terrain FWD			20,35

Interior Volume (cu.ft.)			
Passenger / Cargo			
	2dr	4dr	Pg
Yukon 1500 2WD			23,35
Yukon 1500 4WD			24,36
Yukon 1500 Hybrid 2WD			23,30
Yukon 1500 Hybrid 4WD			24,30
Yukon Denali 1500 AWD			24,36
Yukon Denali 1500 Hybrid 4WD			24,30
Yukon XL 1500 2WD			23,35
Yukon XL 1500 4WD			24,36
Yukon XL 1500 AWD			24,36
Yukon XL 2500 2WD			23
Yukon XL 2500 4WD			24

HONDA

Accord	92/14	103/16	13
Civic	83/12	95/12	10
Civic HF		95/12	11
Civic Hybrid		95/11	11,29
Civic Natural Gas		95/6	11,31
CR-V 2WD			20
CR-V 4WD			22
CR-Z			5,6,29
Crosstour 2WD			20
Crosstour 4WD			22
Fit		91/21	17
Fit EV		91/21	5,17,27
Insight		85/16	11,29
Odyssey			20
Pilot 2WD			20
Pilot 4WD			24
Ridgeline Truck 4WD			18

HYUNDAI

Accent	90/14	90/19	11
Azera		106/16	16
Elantra		96/15	13
Elantra Blue		96/15	13
Elantra Coupe	95/15		13
Elantra GT		96/23	14
Equus		111/17	16
Genesis		109/16	16
Genesis Coupe	89/10		9
Genesis R-Spec		109/16	16
Santa Fe 2WD			20
Santa Fe 4WD			22
Santa Fe Sport 2WD		108/35	20
Santa Fe Sport 4WD		108/35	22
Sonata	104/16		16
Sonata Hybrid	104/12		14,29
Sonata Hybrid Limited	104/12		14,29
Tucson 2WD			20
Tucson 4WD			22
Veloster	90/16		11

INFINITI

EX37	92/19		17
EX37 AWD	92/19		17
FX37 AWD			22
FX37 RWD			20
FX50 AWD			22
G37	99/14		14
G37 Convertible	78/10		9
G37 Coupe	85/7		9
G37x	99/14		14

INDEX

	Interior Volume (cu.ft.)			
	Passenger / Cargo			
	2dr	4dr	Hatch	Pg
G37x Coupe	85/7			9
JX35 AWD				22
JX35 FWD				20
M35h		104/11		14,29
M37		104/15		14
M37x		104/15		14
M56		104/15		14
M56x		104/15		14
QX56 2WD				23
QX56 4WD				24
JAGUAR				
XF		95/18		14
XF AWD		95/18		14
XF FFV		95/18		14,33
XJ		102/18		16
XJ AWD		102/18		16
XJ FFV		102/18		16,33
XJ LWB		109/18		16
XJ LWB AWD		109/18		16
XJL FFV		109/18		16,33
XK	74/10			7
XK Convertible	74/10			7
JEEP				
Compass 2WD				20
Compass 4WD				22
Grand Cherokee 2WD				23,35
Grand Cherokee 4WD				24,36
Grand Cherokee SRT8				24
Patriot 2WD				20
Patriot 4WD				22
Wrangler 4WD				22
Wrangler Unlimited 4WD				22
KIA				
Forte		97/15	97/20	14
Forte Eco		97/15		14
Forte Koup	90/12			11
Optima		102/15		14
Optima Hybrid		102/11		14,29
Optima Hybrid EX		102/11		14,29
Rio		88/14	89/15	11
Rio Eco		88/14	89/15	11
Sorento 2WD				20
Sorento 4WD				22
Soul		102/24		17
Soul Eco		102/24		17
Sportage 2WD				21
Sportage 4WD				22
LAMBORGHINI				
Aventador Coupe				6
Aventador Roadster				6
Gallardo Coupe				6
Gallardo Spyder				6
LAND ROVER				
LR2				22
LR4				24
Range Rover				24
Range Rover Evoque				22
Range Rover Sport				24
LEXUS				
CT 200h		86/14		11,29
ES 300h		100/12		14,29
ES 350		100/15		14
GS 350		99/14		14

	Interior Volume (cu.ft.)			
	Passenger / Cargo			
	2dr	4dr	Hatch	Pg
GS 350 AWD		99/14		14
GS 450h		99/13		14,29
GX 460				24
IS 250 AWD		88/11		9
IS 250/IS 250C	77/11	88/11		9
IS 350 AWD		88/11		9
IS 350/IS 350C	77/11	88/11		9
IS F		88/11		9
LS 460		103/14		14
LS 460 AWD		103/14		14
LS 460 L		102/14		14
LS 460 L AWD		102/14		14
LS 600h L		102/10		14,29
LX 570				24
RX 350				21
RX 350 AWD				22
RX 450h				5,21,30
RX 450h AWD				22,30
LINCOLN				
MKS AWD		105/18		16
MKS FWD		105/18		16
MKT AWD				22
MKT FWD				21
MKT Livery AWD				19
MKT Livery FWD				19
MKX AWD				22
MKX FWD				21
MKZ AWD		99/16		14
MKZ FWD		99/16		14
MKZ Hybrid FWD		99/12		14,29
Navigator 2WD FFV				23,35
Navigator 4WD FFV				24,36
LOTUS				
Evora	48/2	48/2		7
MASERATI				
GranTurismo	86/6			9
GranTurismo Convertible	85/5			9
Quattroporte		121/8		16
MAZDA				
2			87/13	11
3		94/12	95/17	11
3 DI 4-Door		94/12		11
3 DI 5-Door			95/17	14
5				5,20
6		102/17		14
CX-5 2WD				21
CX-5 4WD				22
CX-9 2WD				21
CX-9 4WD				22
MX-5				6
Speed 3		95/17		14
MERCEDES-BENZ				
C250		88/12		11
C250 Coupe	81/12			9
C300 4matic		88/12		11,32
C350		88/12		11,32
C350 4matic Coupe	81/12			9
C350 Coupe	81/12			9
C63 AMG		88/12		11
C63 AMG Black Series Coupe		81/12		9
C63 AMG Coupe		81/12		9
CL550 4matic	91/14			11
CL600	91/14			11
CL63 AMG	91/14			11

	Interior Volume (cu.ft.)			
	Passenger / Cargo			
	2dr	4dr	Hatch	Pg
CL65 AMG	91/14			11
CLS550		92/11		11
CLS550 4matic		92/11		11
CLS63 AMG		92/11		11
E350		98/13		14,33
E350 4Matic		98/13		14,33
E350 4matic		98/13		14
E350 4matic (wagon)		100/36		17
E350 4matic Coupe	81/11			9,32
E350 Bluetec		97/14		14,26
E350 Convertible	80/6			9,32
E350 Coupe	81/11			9,32
E400 Hybrid		98/13		14,29
E550 4matic		98/13		14
E550 Convertible	80/6			9
E550 Coupe	81/11			9
E63 AMG		98/13		14
E63 AMG (wagon)		100/36		17
G550				24
G63 AMG				24
GL350 Bluetec 4matic				24,26
GL450 4matic				24
GL550 4matic				24
GL63 AMG				24
GLK250 Bluetec 4matic				22,26
GLK350				21
GLK350 4matic				22
ML350				23
ML350 4matic				25,36
ML350 Bluetec 4matic				25,26
ML550 4matic				25
ML63 AMG				25
R350 4matic				25
S350 Bluetec 4matic		109/16		16,26
S400 Hybrid		109/16		16,29
S550		109/16		16
S550 4matic		109/16		16
S600		109/16		16
S63 AMG		109/16		16
S65 AMG		109/16		16
SL550				6
SL63 AMG				6
SL65 AMG				6
SLK250				6
SLK350				6
SLK55 AMG				6
SLS AMG Coupe				6
SLS AMG GT Coupe				6
SLS AMG GT Roadster				6
SLS AMG Roadster				6
MINI				
Cooper	74/6			7
Cooper Clubman		80/9		9
Cooper Clubvan				7
Cooper Convertible	72/6			7
Cooper Countryman		87/16		11
Cooper Countryman Coupe		87/16		11
Cooper Coupe				7
Cooper Roadster				7
Cooper S	74/6			7
Cooper S Clubman		80/9		9

Interior Volume (cu.ft.)			
Passenger / Cargo			
	2dr	4dr	Pg
Cooper S Convertible	72/6		7
Cooper S Countryman		87/16	11
Cooper S Countryman All4		87/16	11
Cooper S Countryman Coupe		87/16	11
Cooper S Countryman Coupe All4		87/16	11
Cooper S Coupe			7
Cooper S Roadster			7
JCW Countryman All4		103/16	11
JCW Countryman Coupe All4		87/16	11
John Cooper Works	74/6		7
John Cooper Works Clubman		80/9	9
John Cooper Works Convertible	72/6		7
John Cooper Works Coupe			7
John Cooper Works GP-2			7
John Cooper Works Roadster			7
MITSUBISHI			
i-MiEV		85/13	5,9,27
Lancer		93/12	11
Lancer AWD		93/12	11
Lancer Evolution		93/7	11
Lancer Sportback		95/14	17
Outlander 2WD		100/36	21
Outlander 4WD		100/36	22
Outlander Sport 2WD		97/20	21
Outlander Sport 4WD		97/20	22
NISSAN			
370Z	52/7		7
370Z Roadster	52/4		7
Altima		102/15	14
Altima Coupe	89/8		9
Armada 2WD			23,35
Armada 4WD			25,36
Cube	98/11		17
Frontier 2WD			17
Frontier 4WD			17
GT-R	79/9		9
Juke		87/10	17
Juke AWD		87/10	17
Leaf		92/24	5,14,27
Maxima		96/14	14
Murano AWD			22
Murano CrossCabriolet			22
Murano FWD			21
NV200 Cargo Van			19
Pathfinder 2WD			21
Pathfinder 4WD			22
Quest			20
Rogue AWD			22
Rogue FWD			21
Sentra		96/15	14
Sentra FE		96/15	14
Titan 2WD			18,33
Titan 4WD			18,34
Versa		90/15	11
Xterra 2WD			21
Xterra 4WD			22

PORSCHE

Interior Volume (cu.ft.)			
Passenger / Cargo			
	2dr	4dr	Pg
911 Carrera	70/5		7
911 Carrera 4	70/5		7
911 Carrera 4 Cabriolet	68/5		7
911 Carrera 4S	70/5		7
911 Carrera 4S Cabriolet	68/5		7
911 Carrera Cabriolet	68/5		7
911 Carrera S	70/5		8
911 Carrera S Cabriolet	68/5		8
911 Turbo	70/5		8
911 Turbo Cabriolet	70/5		8
911 Turbo S	70/5		8
911 Turbo S Cabriolet	70/5		8
Boxster			7
Boxster S			7
Cayenne			25
Cayenne Diesel			25,26
Cayenne GTS			25
Cayenne S			25
Cayenne S Hybrid			25,30
Cayenne Turbo			25
Panamera		98/25	16
Panamera 4		98/25	16
Panamera 4S		98/25	16
Panamera GTS		98/25	16
Panamera S		98/25	16
Panamera S Cabriolet		98/25	16,29
Panamera S Hybrid		98/25	16
Panamera Turbo		98/25	16
Panamera Turbo S		98/25	16
RAM			
1500 2WD			18,33
1500 4WD			18,34
1500 HFE 2WD			5,18
C/V			20,35
ROLLS-ROYCE			
Ghost		111/14	16
Ghost EWB		118/14	16
Phantom		113/14	16
Phantom Coupe	96/13		11
Phantom Drophead Coupe	97/11		11
Phantom EWB		125/14	16
ROUSH PERFORMANCE			
Stage 3 Mustang	83/13		9
SCION			
FR-S	77/7		8
iQ		74/4	5,8
iQ EV		73/4	5,8,27
tC		90/15	11
xB		101/22	17
xD		84/11	9
SMART			
fortwo cabriolet			7
fortwo coupe			7
fortwo electric drive convertible			5,7,27
fortwo electric drive coupe			5,7,27
SRT			
Viper			7
SUBARU			
BRZ	77/7		8

Interior Volume (cu.ft.)			
Passenger / Cargo			
	2dr	4dr	Pg
Forester AWD			22
Impreza AWD		96/12	12
Impreza Wagon AWD		98/23	17
Legacy AWD		103/15	15
Outback AWD			22
Tribeca AWD			22
XV Crosstrek AWD			22
SUZUKI			
Grand Vitara			21
Grand Vitara 4WD			22
Kizashi		92/13	12
Kizashi AWD		92/13	12
Kizashi S		92/13	12
Kizashi S AWD		92/13	12
SX4		90/7	9
SX4 AWD		90/7	9
SX4 Sedan		88/16	12
SX4 Sport		88/16	12
TESLA			
Model S (40 kW-hr battery pack)		94/26	16,27
Model S (60 kW-hr battery pack)		94/26	5,16,27
Model S (85 kW-hr battery pack)		94/26	16,27
TOYOTA			
4Runner 2WD			23
4Runner 4WD			25
Avalon		104/16	15
Avalon Hybrid		104/14	15,29
Camry		103/15	15
Camry Hybrid LE		103/13	15,29
Camry Hybrid XLE		103/13	15,29
Corolla		92/12	12
FJ Cruiser 2WD			21
FJ Cruiser 4WD			22
Highlander 2WD			21
Highlander 4WD			22
Highlander Hybrid 4WD			5,25,30
Land Cruiser Wagon 4WD			25
Matrix		94/20	17
Prius		94/22	5,15,29
Prius c		87/17	5,12,29
Prius Plug-in Hybrid		94/22	15,28
Prius v		97/34	5,17,29
RAV4 2WD			21
RAV4 AWD			22
RAV4 EV			5,21,27
RAV4 Limited AWD			22
Sequoia 2WD			23
Sequoia 4WD			25
Sequoia 4WD FFV			25,36
Sienna 2WD			20
Sienna AWD			20
Tacoma 2WD			5,17
Tacoma 4WD			17
Tundra 2WD			18
Tundra 4WD			18
Tundra 4WD FFV			18,34
Venza			21
Venza AWD			22
Yaris		85/15	12
VOLKSWAGEN			
Beetle		85/15	12,26

Interior Volume (cu.ft.)

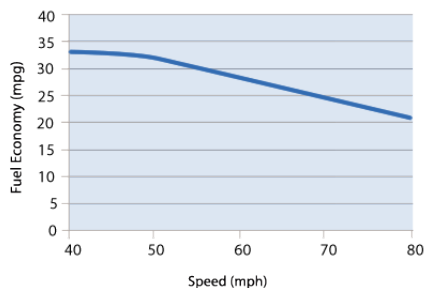
Passenger / Cargo

	2dr	4dr	Hatch	Pg
Beetle Convertible	81/7			9,26
CC	94/13			12
CC 4motion	94/13			12
Eos	77/11			9
Golf			94/15	12,26
Golf R			94/15	12
GTI			94/15	12
Jetta		94/16		12,26
Jetta Hybrid		94/16		12,29
Jetta SportWagen		92/33		5,17,26
Passat		102/16		15,26
Routan				20,35
Tiguan				21
Tiguan 4motion				23
Touareg				25,26
Touareg Hybrid				25,30
VOLVO				
C30 FWD			89/15	12
C70 FWD	84/13			10
S60 AWD		92/14		12
S60 FWD		92/14		12
S80 AWD		98/15		15
S80 FWD		98/15		15
XC60 AWD		99/34		23
XC60 FWD		99/34		21
XC70 AWD		98/37		23
XC70 FWD		98/37		21
XC90 AWD				25
XC90 FWD				23
VPG				
MV-1				19,31

IMPROVE YOUR FUEL ECONOMY

Drive More Efficiently

- Aggressive driving (speeding and rapid acceleration and braking) can lower your gas mileage by as much as 33% at highway speeds and 5% around town.
- Observe the speed limit—each 5 MPH you drive over 60 MPH can reduce your fuel economy by 7-8%.



- Avoid idling—idling gets 0 miles per gallon!
- Using cruise control on the highway helps you maintain a constant speed and, in most cases, will save gas.

Keep Your Car in Shape

- Fixing a car that is noticeably out of tune can improve gas mileage by about 4%.
- Keeping tires inflated to the recommended pressure and using the recommended grade of motor oil can improve fuel economy by up to 5%.

The manufacturer's recommended tire pressure can be found on the tire information placard and/or vehicle certification label located on the vehicle door edge, doorpost, glove-box door, or inside the trunk lid.

- Keep your tires aligned and balanced.
- Replacing a clogged air filter can improve gas mileage on older cars with carbureted engines.

Plan and Combine Trips

- A warmed-up engine is more fuel-efficient than a cold one. Many short trips taken from a cold start can use twice as much fuel as one multipurpose trip covering the same distance.

Note: Letting your car idle to warm-up doesn't help your fuel economy; it actually uses more fuel and creates more pollution.

Other Solutions

- Avoid carrying unneeded items. An extra 100 lbs. can decrease fuel economy by 1-2%.
- A roof rack or carrier provides additional cargo space and may allow you to meet your needs with a smaller car. However, a loaded roof rack can decrease your fuel economy by 5%.

Reduce aerodynamic drag and improve your fuel economy by placing items inside the trunk whenever possible.

For more tips and more information about gasoline pricing, visit www.fueleconomy.gov.