

**STATE OF MAINE
PEDESTRIAN CRASH HISTORY
2009 - 2013**



**STATE OF MAINE
BICYCLE CRASH HISTORY
2009 - 2013**

Prepared by:
Maine Department of Transportation
Bureau of Maintenance and Operations
Traffic Engineering Division
Crash Records Section
16 State House Station
Augusta, Maine 04333-0016

STATE OF MAINE
HIGHWAY PEDESTRIAN CRASHES
2009 - 2013

I.	PREFACE	1
II.	PEDESTRIAN CRASH TABLES AND CHARTS 2009-2013	
	Crashes Summarized by:	
	County	2-5
	Severity	6-7
	Rural/Urban Designations	8
	Month	9
	Day of Week	10
	Time of Day	11
	Age Groups	12
	Age Groups by Gender	13
	Apparent Physical Condition	14
	Contributing Factors	15
	Vehicle Type	16
	Light Conditions	17
	Weather Conditions	18
	Road Surface Conditions	19

STATEWIDE PEDESTRIAN CRASHES

2009 - 2013

Preface

This publication is a statistical review of reported motor vehicle crashes that involved pedestrians in Maine during the five-year study period 2009 - 2013. The statistics are compiled from crash reports submitted to the Department of Transportation by the Traffic Division, Department of Public Safety. The Traffic Division receives all police uniform crash reports Form 13:20 A, from state, county and local police agencies.

The enclosed charts, graphs, listings and summaries were produced using the Department of Transportation's Computerized Crash Records System. Except for adjustments to locations and crash-type information for accuracy, no attempt has been made to modify the raw data received from the reporting agencies. However, because crash scenes are often dangerous and chaotic, some inaccuracies in data collection are possible.

A comparison of this report with other summaries of crashes and fatalities may also reveal inconsistencies due to changes in crash classification, late submittals, and differing reporting criteria.



P1

The Department of Transportation and the Department of Public Safety wish to express our sincere thank you to all law enforcement agencies and officers for the work they do on crash investigations. Without their dedication, this report would not be possible.

We welcome your comments and suggestions on this report at:

Maine Department of Transportation
Bureau of Maintenance and Operations
Traffic Engineering Division
Crash Records Section
16 State House Station
Augusta, ME 04333-0016

Tel: 207-624-3618

Fax: 207-624-3101



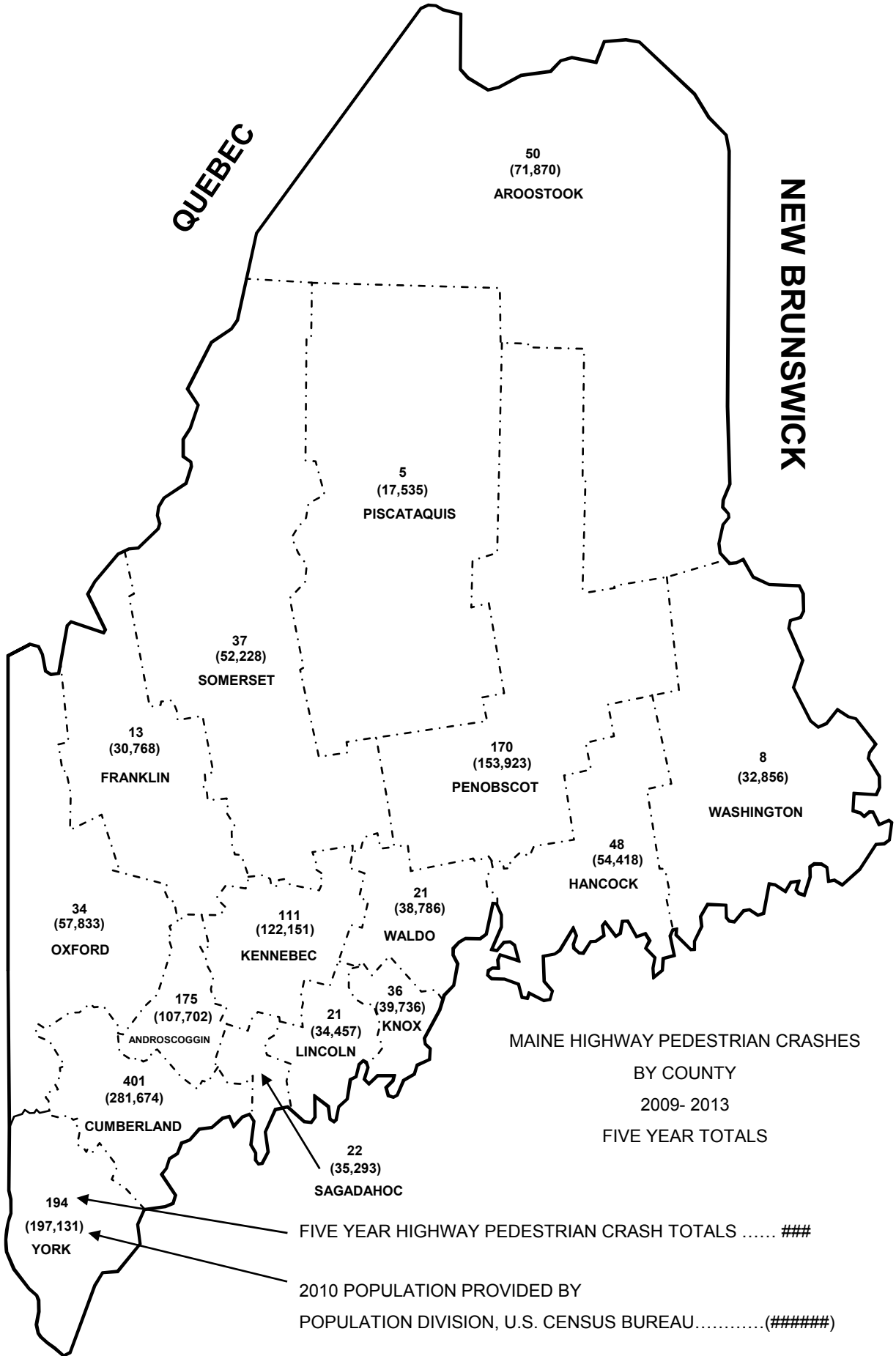
QUEBEC

NEW BRUNSWICK

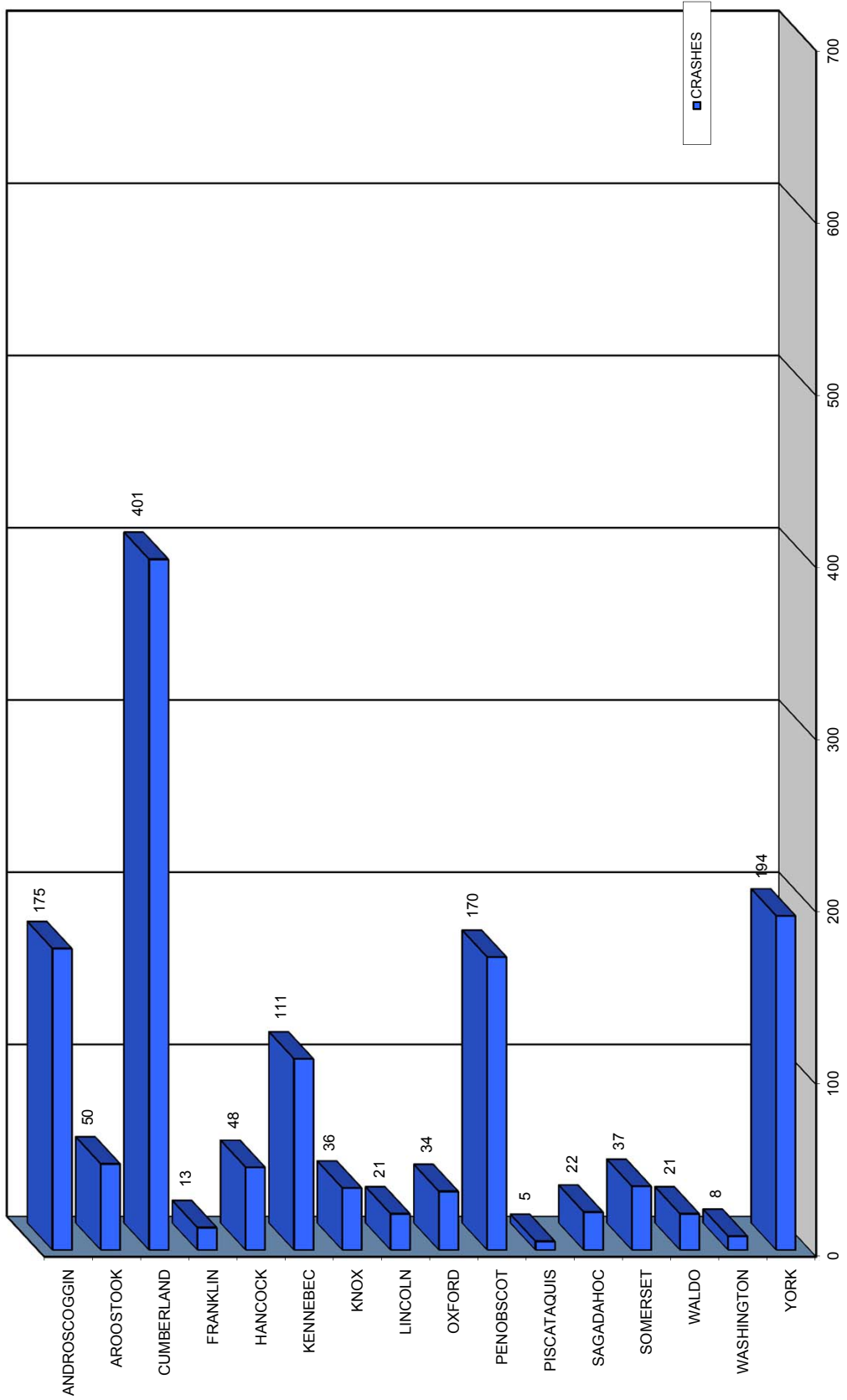


P2

NEW HAMPSHIRE



MAINE HIGHWAY PEDESTRIAN CRASHES By County 2009 - 2013



P3

MAINE HIGHWAY PEDESTRIAN CRASH SEVERITY

BY COUNTY

2009 - 2013



P4

COUNTY	INJURY TYPE	2009	2010	2011	2012	2013	TOTAL CRASHES	PERCENT OF TOTAL
ANDROSCOGGIN Percent personal injury 93.14%	FATAL (K)	1	0	0	0	1	2	0.15%
	INCAPACITATING (A)	2	2	7	3	2	16	1.19%
	NON-INCAPACITATING (B)	14	22	12	9	8	65	4.83%
	POSSIBLE INJURY (C)	14	11	18	23	14	80	5.94%
	PROPERTY DAMAGE ONLY (PDO)	0	0	1	8	3	12	0.89%
	COUNTY SUBTOTAL		31	35	38	43	28	175
AROOSTOOK Percent personal injury 100.00%	FATAL (K)	2	0	1	0	0	3	0.22%
	INCAPACITATING (A)	2	1	0	2	3	8	0.59%
	NON-INCAPACITATING (B)	3	2	6	2	8	21	1.56%
	POSSIBLE INJURY (C)	5	6	1	2	4	18	1.34%
	PROPERTY DAMAGE ONLY (PDO)	0	0	0	0	0	0	0.00%
	COUNTY SUBTOTAL		12	9	8	6	15	50
CUMBERLAND Percent personal injury 98.75%	FATAL (K)	2	2	1	1	1	7	0.52%
	INCAPACITATING (A)	11	18	17	23	9	78	5.79%
	NON-INCAPACITATING (B)	26	29	29	34	22	140	10.40%
	POSSIBLE INJURY (C)	33	31	34	31	42	171	12.70%
	PROPERTY DAMAGE ONLY (PDO)	0	0	2	1	2	5	0.37%
	COUNTY SUBTOTAL		72	80	83	90	76	401
FRANKLIN Percent personal injury 100.00%	FATAL (K)	0	1	1	0	0	2	0.15%
	INCAPACITATING (A)	0	0	0	0	0	0	0.00%
	NON-INCAPACITATING (B)	0	1	1	2	0	4	0.30%
	POSSIBLE INJURY (C)	2	0	1	2	2	7	0.52%
	PROPERTY DAMAGE ONLY (PDO)	0	0	0	0	0	0	0.00%
	COUNTY SUBTOTAL		2	2	3	4	2	13
HANCOCK Percent personal injury 100.00%	FATAL (K)	0	0	2	1	0	3	0.22%
	INCAPACITATING (A)	4	3	4	4	2	17	1.26%
	NON-INCAPACITATING (B)	2	3	7	2	6	20	1.49%
	POSSIBLE INJURY (C)	0	0	2	3	3	8	0.59%
	PROPERTY DAMAGE ONLY (PDO)	0	0	0	0	0	0	0.00%
	COUNTY SUBTOTAL		6	6	15	10	11	48
KENNEBEC Percent personal injury 95.50%	FATAL (K)	2	2	0	2	0	6	0.45%
	INCAPACITATING (A)	4	1	5	7	3	20	1.49%
	NON-INCAPACITATING (B)	7	10	9	11	2	39	2.90%
	POSSIBLE INJURY (C)	8	8	7	11	7	41	3.05%
	PROPERTY DAMAGE ONLY (PDO)	0	0	2	1	2	5	0.37%
	COUNTY SUBTOTAL		21	21	23	32	14	111
KNOX Percent personal injury 100.00%	FATAL (K)	0	1	0	0	2	3	0.22%
	INCAPACITATING (A)	2	0	2	3	1	8	0.59%
	NON-INCAPACITATING (B)	0	4	3	1	2	10	0.74%
	POSSIBLE INJURY (C)	2	2	3	4	4	15	1.11%
	PROPERTY DAMAGE ONLY (PDO)	0	0	0	0	0	0	0.00%
	COUNTY SUBTOTAL		4	7	8	8	9	36
LINCOLN Percent personal injury 90.48%	FATAL (K)	0	0	1	0	0	1	0.07%
	INCAPACITATING (A)	2	0	0	1	1	4	0.30%
	NON-INCAPACITATING (B)	2	1	0	0	1	4	0.30%
	POSSIBLE INJURY (C)	3	3	2	0	2	10	0.74%
	PROPERTY DAMAGE ONLY (PDO)	0	0	0	2	0	2	0.15%
	COUNTY SUBTOTAL		7	4	3	3	4	21

MAINE HIGHWAY PEDESTRIAN CRASH SEVERITY

By County

2009 - 2013

COUNTY	INJURY TYPE	2009	2010	2011	2012	2013	TOTAL CRASHES	PERCENT OF TOTAL
OXFORD Percent personal injury 97.06%	FATAL (K)	1	0	1	0	0	2	0.15%
	INCAPACITATING (A)	1	0	2	3	0	6	0.45%
	NON-INCAPACITATING (B)	0	1	2	2	3	8	0.59%
	POSSIBLE INJURY (C)	2	4	7	1	3	17	1.26%
	PROPERTY DAMAGE ONLY (PDO)	0	0	0	1	0	1	0.07%
	COUNTY SUBTOTAL		4	5	12	7	6	34
PENOBSCOT Percent personal injury 97.65%	FATAL (K)	1	2	0	3	3	9	0.67%
	INCAPACITATING (A)	5	2	7	12	7	33	2.45%
	NON-INCAPACITATING (B)	8	9	9	14	12	52	3.86%
	POSSIBLE INJURY (C)	14	14	13	16	15	72	5.35%
	PROPERTY DAMAGE ONLY (PDO)	2	1	1	0	0	4	0.30%
	COUNTY SUBTOTAL		30	28	30	45	37	170
PISCATAQUIS Percent personal injury 100.00%	FATAL (K)	0	0	1	0	0	1	0.07%
	INCAPACITATING (A)	1	0	0	0	0	1	0.07%
	NON-INCAPACITATING (B)	1	0	0	1	0	2	0.15%
	POSSIBLE INJURY (C)	0	0	1	0	0	1	0.07%
	PROPERTY DAMAGE ONLY (PDO)	0	0	0	0	0	0	0.00%
	COUNTY SUBTOTAL		2	0	2	1	0	5
SAGadahoc Percent personal injury 100.00%	FATAL (K)	1	0	2	0	0	3	0.22%
	INCAPACITATING (A)	1	0	0	0	1	2	0.15%
	NON-INCAPACITATING (B)	1	1	1	1	6	10	0.74%
	POSSIBLE INJURY (C)	3	0	2	1	1	7	0.52%
	PROPERTY DAMAGE ONLY (PDO)	0	0	0	0	0	0	0.00%
	COUNTY SUBTOTAL		6	1	5	2	8	22
SOMERSET Percent personal injury 97.30%	FATAL (K)	0	0	1	0	1	2	0.15%
	INCAPACITATING (A)	3	0	1	3	2	9	0.67%
	NON-INCAPACITATING (B)	3	1	3	3	2	12	0.89%
	POSSIBLE INJURY (C)	3	4	2	1	3	13	0.97%
	PROPERTY DAMAGE ONLY (PDO)	0	0	0	0	1	1	0.07%
	COUNTY SUBTOTAL		9	5	7	7	9	37
WALDO Percent personal injury 95.24%	FATAL (K)	0	1	1	0	0	2	0.15%
	INCAPACITATING (A)	1	1	0	2	0	4	0.30%
	NON-INCAPACITATING (B)	1	0	1	2	1	5	0.37%
	POSSIBLE INJURY (C)	0	2	3	1	3	9	0.67%
	PROPERTY DAMAGE ONLY (PDO)	0	1	0	0	0	1	0.07%
	COUNTY SUBTOTAL		2	5	5	5	4	21
WASHINGTON Percent personal injury 100.00%	FATAL (K)	0	0	0	0	1	1	0.07%
	INCAPACITATING (A)	0	0	1	2	1	4	0.30%
	NON-INCAPACITATING (B)	0	0	2	0	0	2	0.15%
	POSSIBLE INJURY (C)	0	1	0	0	0	1	0.07%
	PROPERTY DAMAGE ONLY (PDO)	0	0	0	0	0	0	0.00%
	COUNTY SUBTOTAL		0	1	3	2	2	8
YORK Percent personal injury 98.45%	FATAL (K)	1	3	0	3	1	8	0.59%
	INCAPACITATING (A)	11	3	4	4	4	26	1.93%
	NON-INCAPACITATING (B)	18	15	24	12	16	85	6.32%
	POSSIBLE INJURY (C)	13	20	14	17	8	72	5.35%
	PROPERTY DAMAGE ONLY (PDO)	0	1	0	0	2	3	0.22%
	COUNTY SUBTOTAL		43	42	42	36	31	194
COUNTY GRAND TOTAL Percent personal injury 97.47%	FATAL (K)	11	12	12	10	10	55	4.09%
	INCAPACITATING (A)	50	31	50	69	36	236	17.53%
	NON-INCAPACITATING (B)	86	99	109	96	89	479	35.59%
	POSSIBLE INJURY (C)	102	106	110	113	111	542	40.27%
	PROPERTY DAMAGE ONLY (PDO)	2	3	6	13	10	34	2.53%
	GRAND TOTAL		251	251	287	301	256	1346

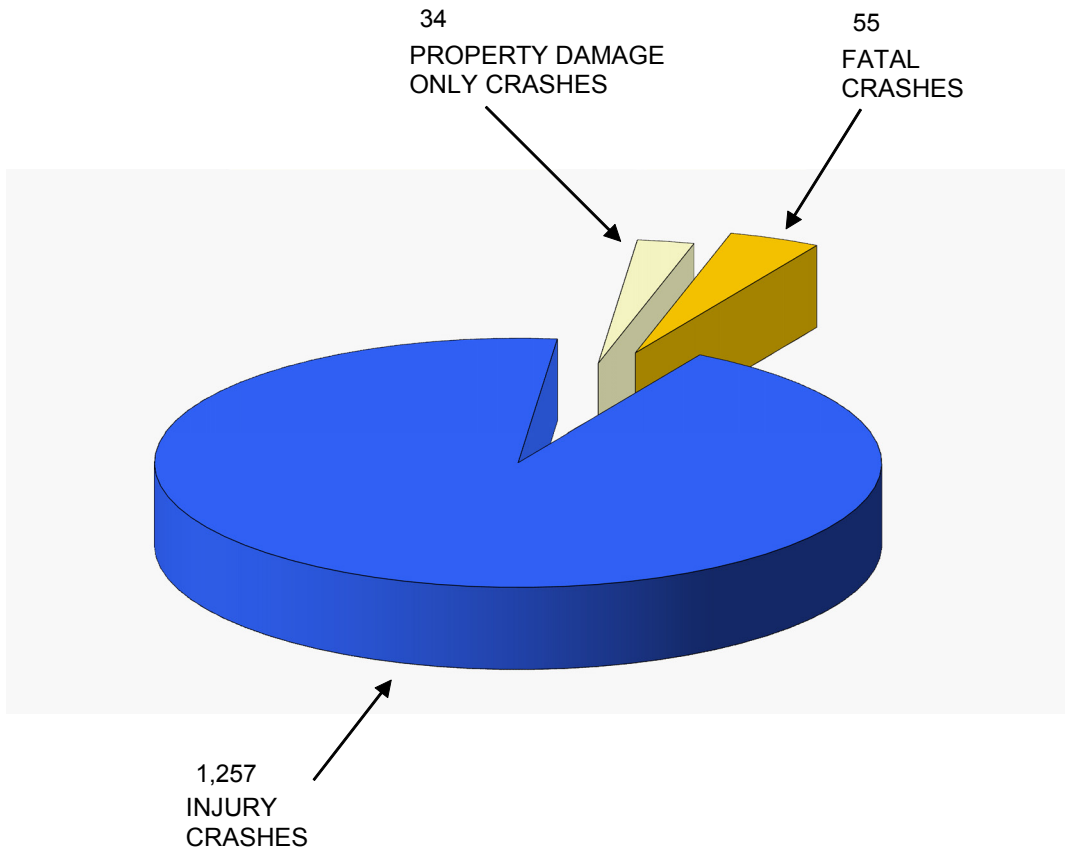


MAINE HIGHWAY PEDESTRIAN CRASHES 2009 - 2013

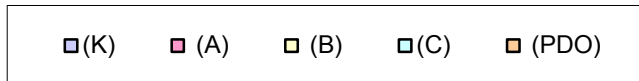
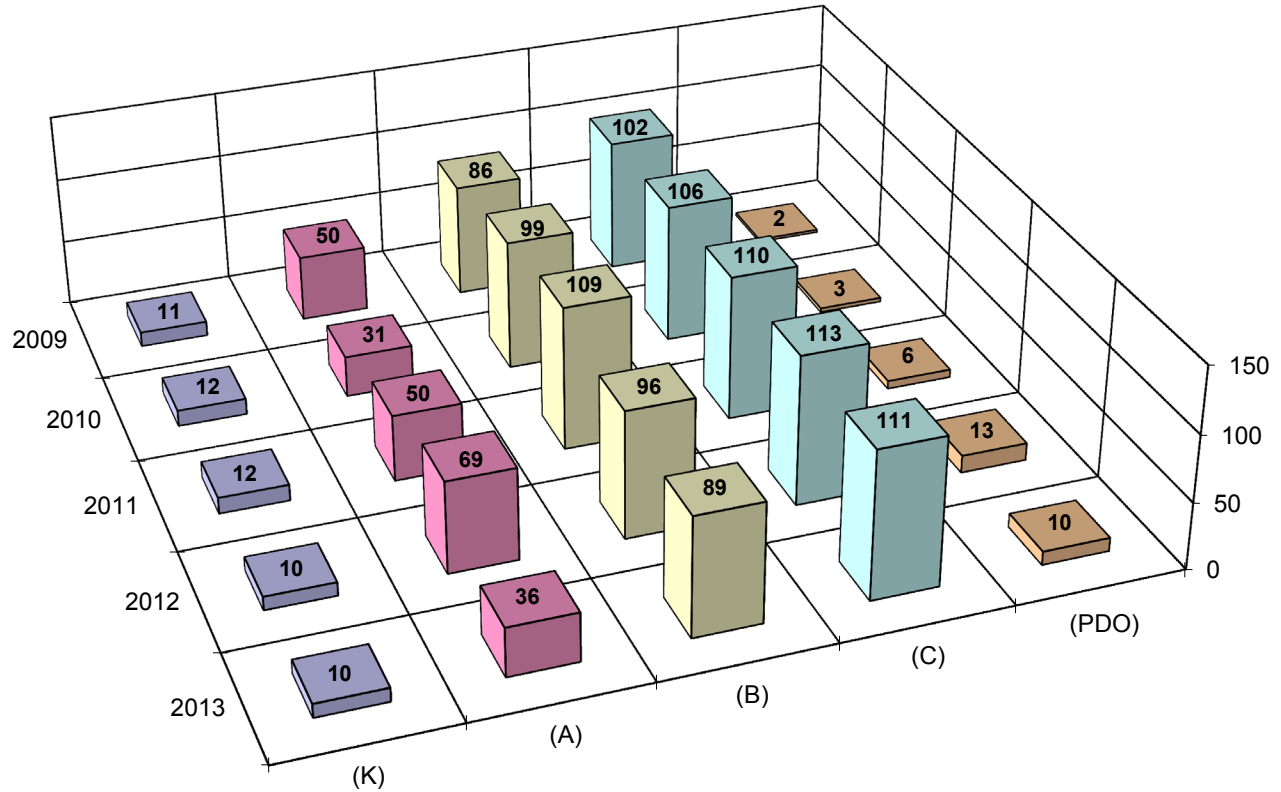
1,346 TOTAL PEDESTRIAN CRASHES



P6



MAINE HIGHWAY PEDESTRIAN CRASH SEVERITY BY YEAR 2009 - 2013

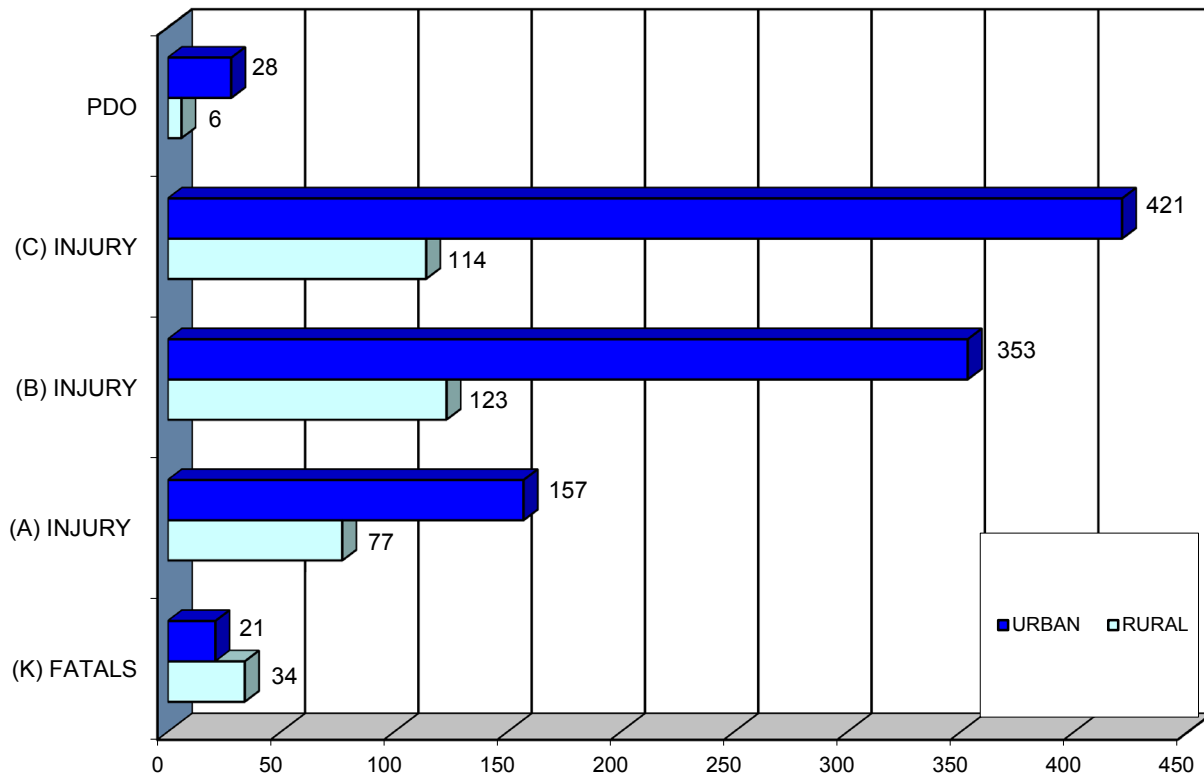


YEAR	FATAL CRASH (K)	INCAPACITATING INJURY (A)	NON INCAPACITATING INJURY (B)	POSSIBLE INJURY (C)	PROPERTY DAMAGE ONLY (PDO)	TOTAL CRASHES	
2009	11	50	86	102	2	251	
2010	12	31	99	106	3	251	
2011	12	50	109	110	6	287	
2012	10	69	96	113	13	301	
2013	10	36	89	111	10	256	
TOTAL	55	236	479	542	34	1346	
PERCENT	4.09%	PERCENT INJURY CRASHES =			93.39%	2.53%	100.00%

MAINE HIGHWAY PEDESTRIAN CRASH SEVERITY BY RURAL URBAN DESIGNATION 2009 - 2013



P8

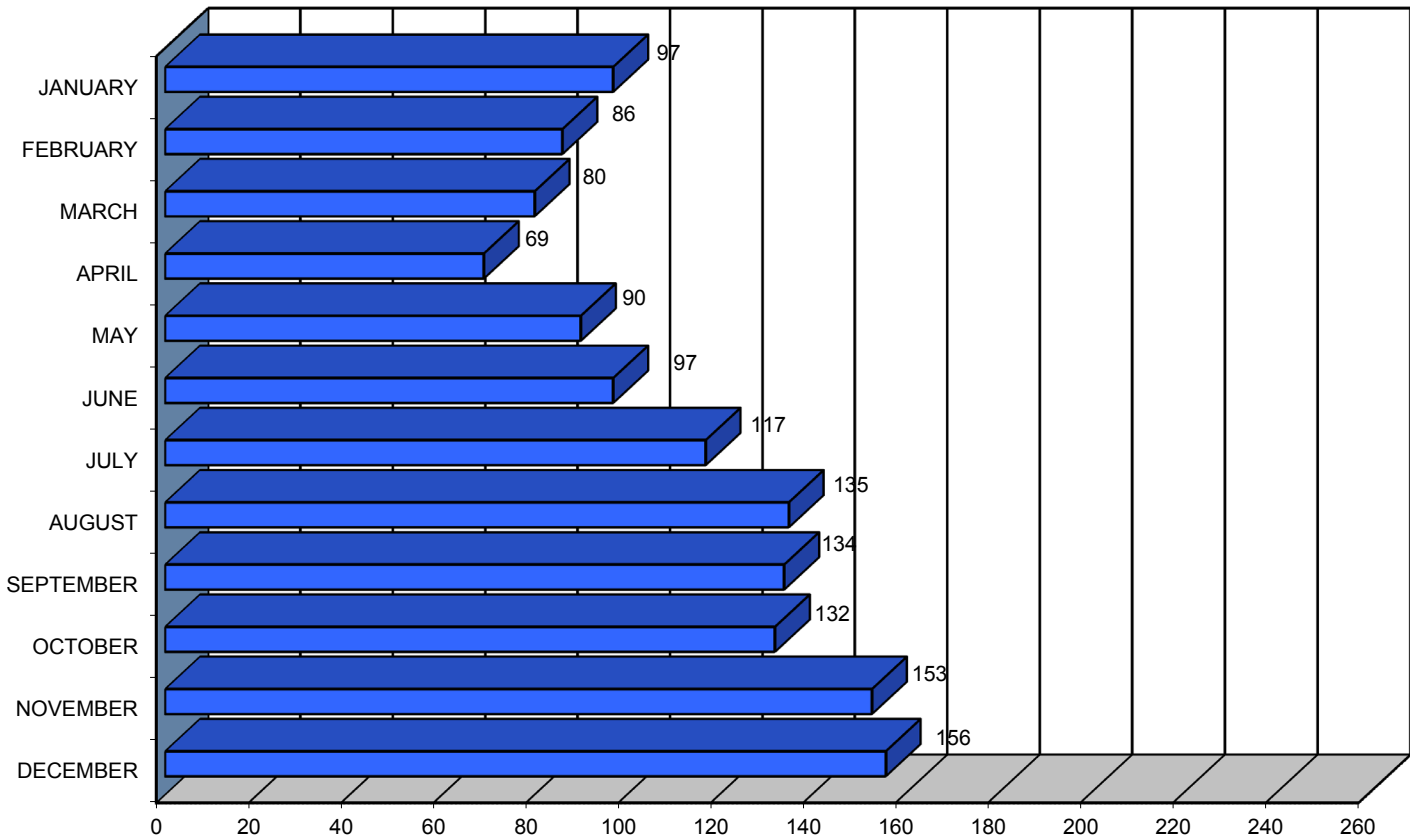


RURAL URBAN DESIGNATION	FATAL CRASHES (K)	INCAPACITATING INJURY (A)	NON INCAPACITATING INJURY (B)	POSSIBLE INJURY (C)	PROPERTY DAMAGE ONLY (PDO)	FIVE YEAR TOTAL
RURAL (1)	34	77	123	114	6	354
URBAN (2)	21	157	353	421	28	980
UNKNOWN	0	2	3	7	0	12
TOTAL	55	236	479	542	34	1346

MAINE PEDESTRIAN CRASHES

BY MONTH

2009 - 2013



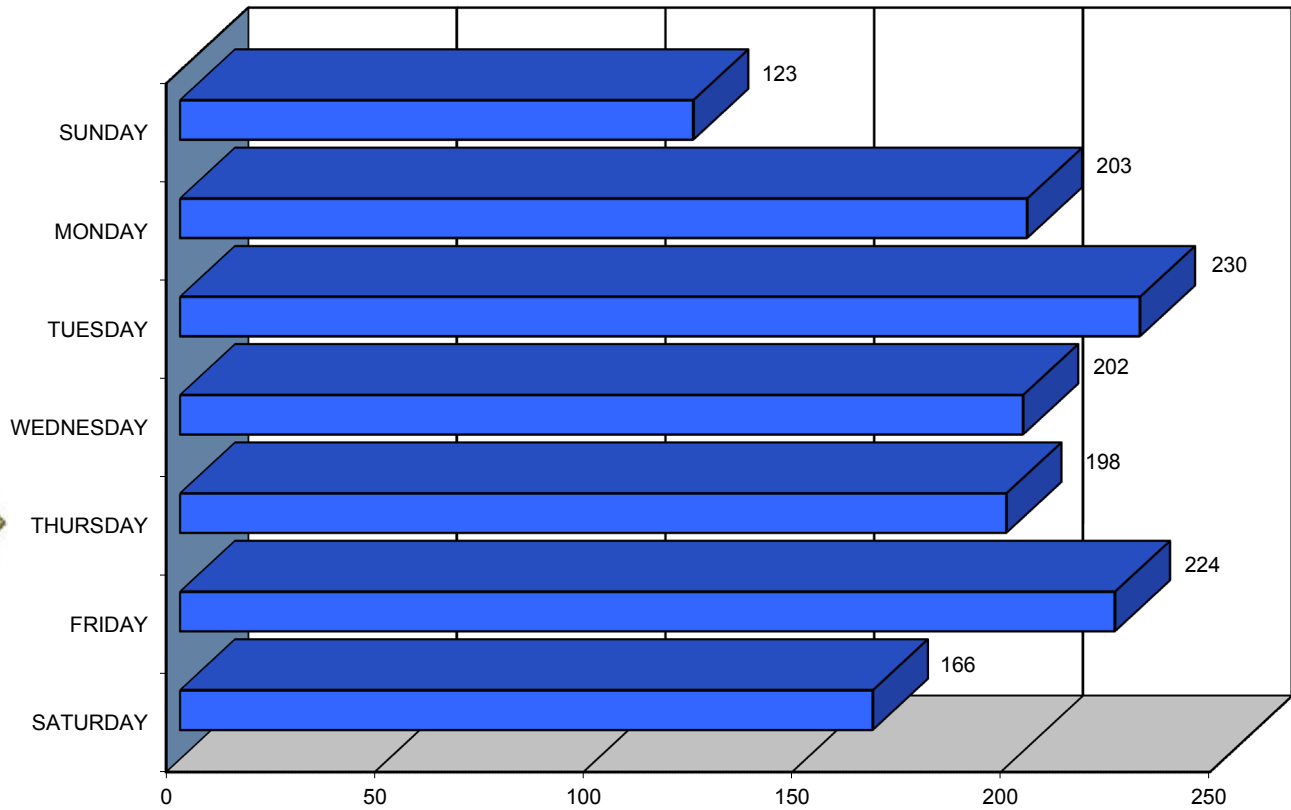
P9

MONTH	2009	2010	2011	2012	2013	FIVE YEAR TOTAL	PERCENT OF TOTAL
JANUARY	18	16	19	28	16	97	7.21%
FEBRUARY	18	21	17	17	13	86	6.39%
MARCH	16	15	13	19	17	80	5.94%
APRIL	15	8	17	22	7	69	5.13%
MAY	12	19	21	19	19	90	6.69%
JUNE	12	16	26	23	20	97	7.21%
JULY	24	24	29	19	21	117	8.69%
AUGUST	25	21	28	29	32	135	10.03%
SEPTEMBER	28	24	24	35	23	134	9.96%
OCTOBER	23	31	21	30	27	132	9.81%
NOVEMBER	27	30	45	23	28	153	11.37%
DECEMBER	33	26	27	37	33	156	11.59%
TOTAL	251	251	287	301	256	1346	100.00%

MAINE HIGHWAY PEDESTRIAN CRASHES BY DAY OF THE WEEK 2009 - 2013



P10



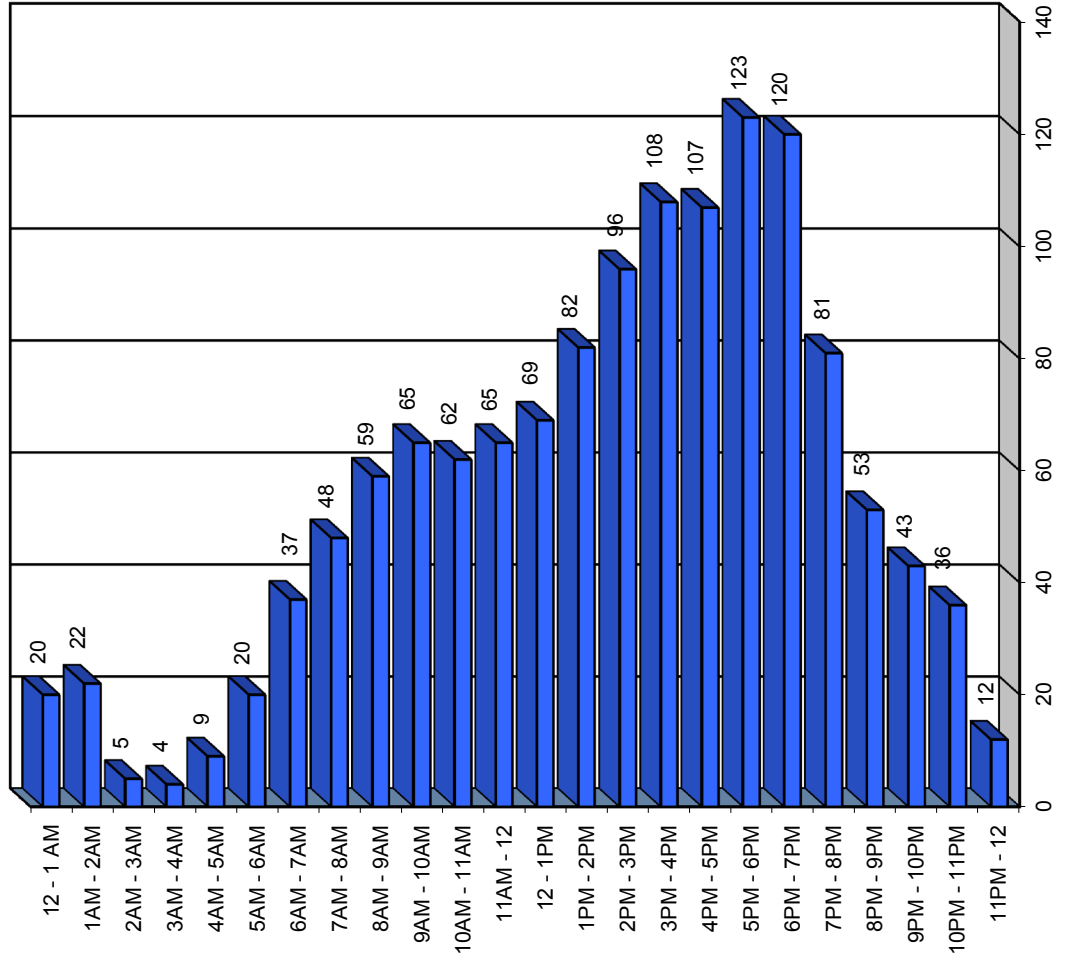
DAY OF THE WEEK	2009	2010	2011	2012	2013	FIVE YEAR TOTAL	PERCENT OF TOTAL
SUNDAY	24	20	28	29	22	123	9.14%
MONDAY	42	46	33	46	36	203	15.08%
TUESDAY	29	40	61	55	45	230	17.09%
WEDNESDAY	32	44	45	32	49	202	15.01%
THURSDAY	42	38	43	41	34	198	14.71%
FRIDAY	48	31	42	59	44	224	16.64%
SATURDAY	34	32	35	39	26	166	12.33%
TOTAL	251	251	287	301	256	1346	100.00%

MAINE HIGHWAY PEDESTRIAN CRASHES

BY TIME OF DAY

2009 - 2013

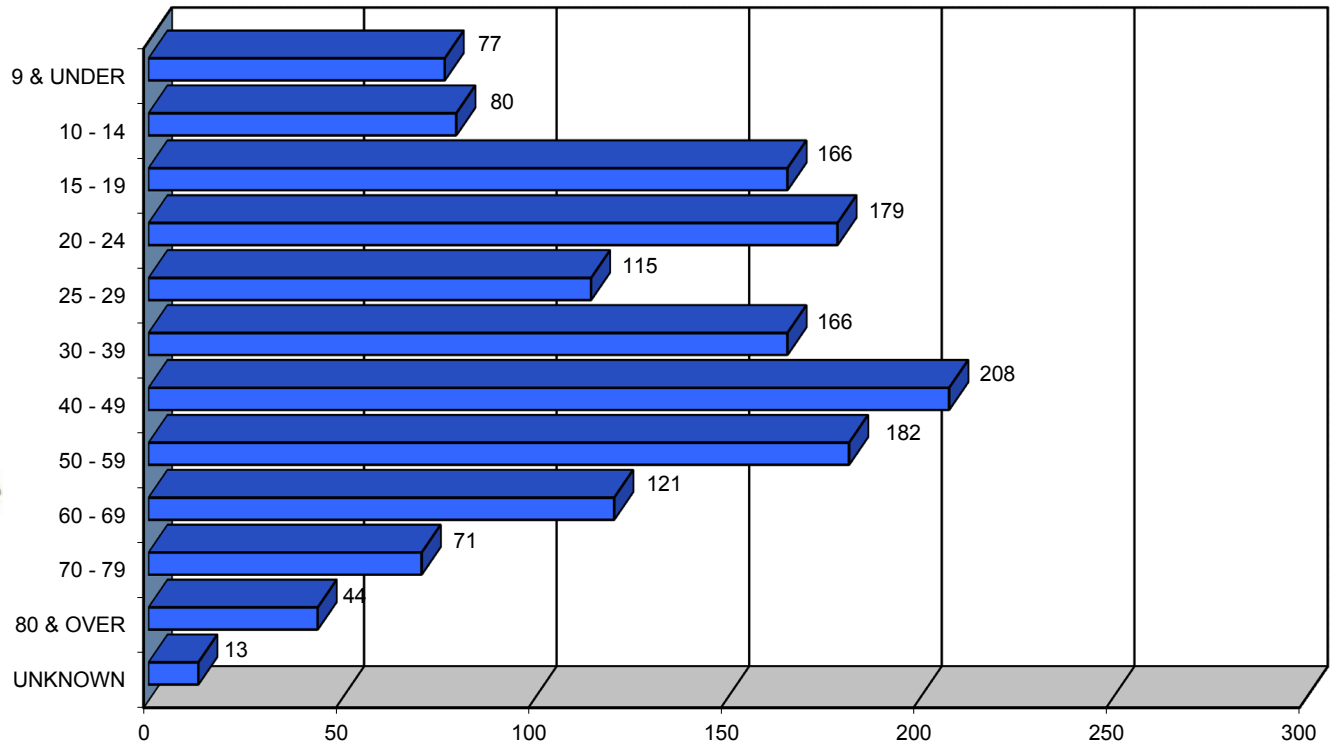
TIME OF DAY	2009	2010	2011	2012	2013	FIVE YEAR TOTAL
12 - 1 AM	4	6	5	2	3	20
1AM - 2AM	6	1	5	6	4	22
2AM - 3AM	2	0	1	2	0	5
3AM - 4AM	0	1	0	2	1	4
4AM - 5AM	0	2	3	2	2	9
5AM - 6AM	3	6	2	2	7	20
6AM - 7AM	3	16	5	4	9	37
7AM - 8AM	9	12	8	11	8	48
8AM - 9AM	7	7	13	19	13	59
9AM - 10AM	15	12	11	12	15	65
10AM - 11AM	10	17	11	11	13	62
11AM - 12	11	14	12	14	14	65
12 - 1PM	11	17	12	14	15	69
1PM - 2PM	12	20	17	14	19	82
2PM - 3PM	16	24	18	25	13	96
3PM - 4PM	21	19	23	20	25	108
4PM - 5PM	17	18	26	23	23	107
5PM - 6PM	27	16	30	30	20	123
6PM - 7PM	22	21	27	36	14	120
7PM - 8PM	20	10	21	19	11	81
8PM - 9PM	10	3	12	18	10	53
9PM - 10PM	10	7	12	6	8	43
10PM - 11PM	7	2	9	9	9	36
11PM - 12	8	0	4	0	0	12
TOTAL	251	251	287	301	256	1346



PEDESTRIANS INVOLVED IN MAINE HIGHWAY CRASHES BY AGE GROUP 2009 - 2013

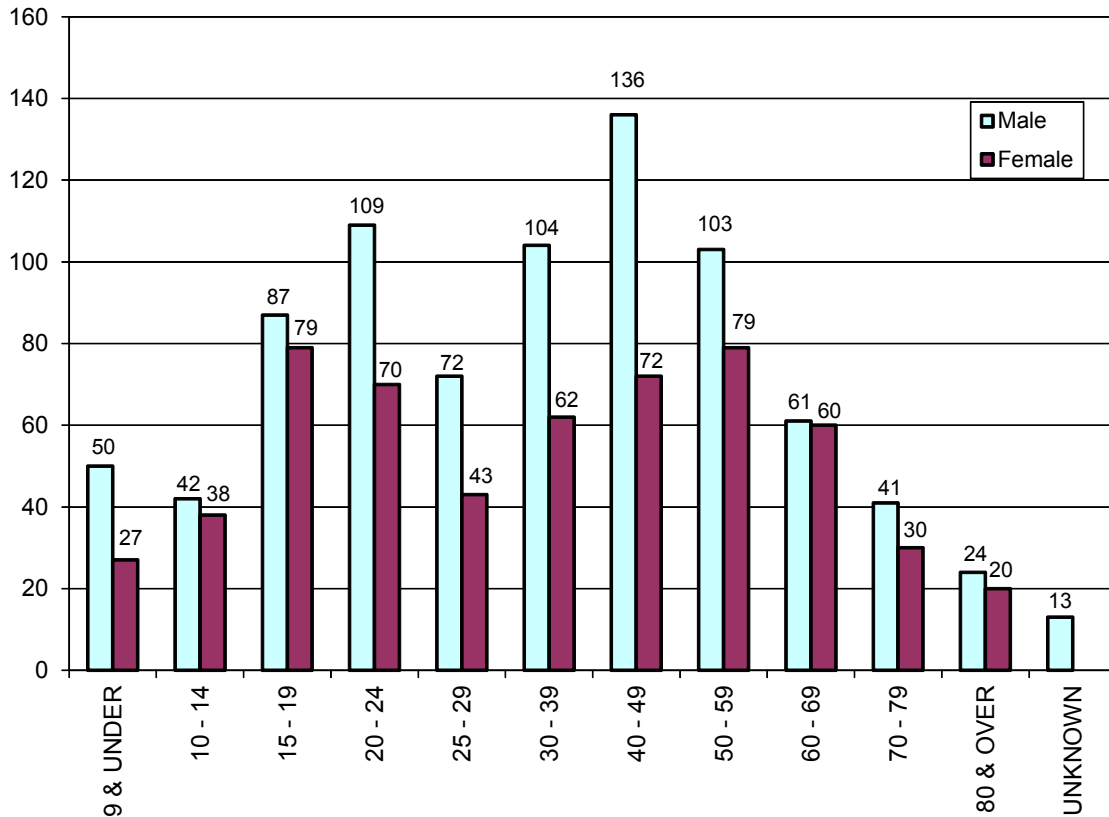


P12



AGE GROUP OF PEDESTRIAN	2009	2010	2011	2012	2013	FIVE YEAR TOTAL	PERCENT OF TOTAL
9 & UNDER	13	18	19	13	14	77	5.41%
10 - 14	21	18	17	12	12	80	5.63%
15 - 19	32	37	30	39	28	166	11.67%
20 - 24	40	28	40	30	41	179	12.59%
25 - 29	28	18	18	25	26	115	8.09%
30 - 39	25	17	39	44	41	166	11.67%
40 - 49	44	47	39	46	32	208	14.63%
50 - 59	30	42	43	37	30	182	12.80%
60 - 69	23	18	23	40	17	121	8.51%
70 - 79	9	15	13	15	19	71	4.99%
80 & OVER	5	10	11	9	9	44	3.09%
UNKNOWN	0	0	1	6	6	13	0.91%
TOTAL	270	268	293	316	275	1422	100.00%

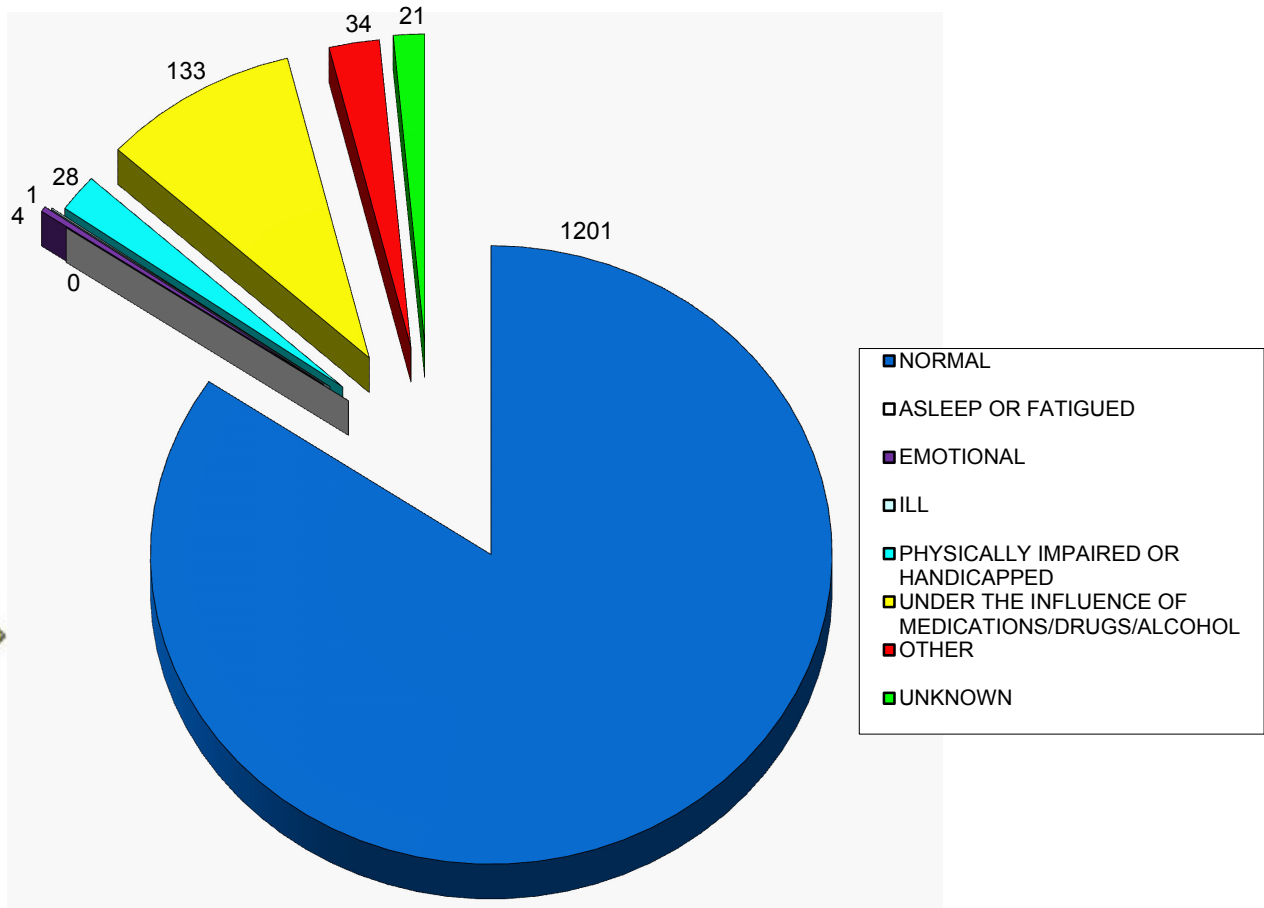
PEDESTRIANS INVOLVED IN MAINE HIGHWAY CRASHES BY AGE GROUP AND GENDER 2009 - 2013



P13

AGE GROUP OF PEDESTRIAN BY GENDER	2009		2010		2011		2012		2013		TOTALS		FIVE YEAR TOTAL	PERCENT OF TOTAL
	M	F	M	F	M	F	M	F	M	F	M	F		
9 & UNDER	9	4	11	7	15	4	5	8	10	4	50	27	77	5.41%
10 - 14	14	7	9	9	9	8	5	7	5	7	42	38	80	5.63%
15 - 19	21	11	16	21	12	18	22	17	16	12	87	79	166	11.67%
20 - 24	23	17	16	12	25	15	20	10	25	16	109	70	179	12.59%
25 - 29	15	13	11	7	14	4	16	9	16	10	72	43	115	8.09%
30 - 39	19	6	9	8	26	13	23	21	27	14	104	62	166	11.67%
40 - 49	32	12	23	24	24	15	31	15	26	6	136	72	208	14.63%
50 - 59	18	12	25	17	26	17	17	20	17	13	103	79	182	12.80%
60 - 69	12	11	8	10	10	13	18	22	13	4	61	60	121	8.51%
70 - 79	6	3	7	8	7	6	13	2	8	11	41	30	71	4.99%
80 & OVER	3	2	6	4	9	2	3	6	3	6	24	20	44	3.09%
UNKNOWN	0		0		1		6		6		13		13	0.91%
TOTAL BY GENDER	172	98	141	127	177	115	173	137	166	103	829	580		
TOTAL	270		268		293		316		275		1422		1422	100.00%

MAINE HIGHWAY PEDESTRIAN CRASHES BY APPARENT PHYSICAL CONDITIONS 2009 - 2013



P14

PEDESTRIAN PHYSICAL CONDITION	2009	2010	2011	2012	2013	FIVE YEAR TOTAL	PERCENT OF TOTAL
APPARENTLY NORMAL	233	237	240	265	226	1201	84.46%
ASLEEP OR FATIGUED	0	0	0	0	0	0	0.00%
EMOTIONAL (depressed, angry, disturbed, etc.)	0	0	2	2	0	4	0.28%
ILL (sick)	1	0	0	0	0	1	0.07%
PHYSICALLY IMPAIRED OR HANDICAPPED	6	6	4	6	6	28	1.97%
UNDER THE INFLUENCE OF MEDICATIONS/DRUGS/ALCOHOL	24	23	35	22	29	133	9.35%
OTHER	6	2	7	12	7	34	2.39%
UNKNOWN	0	0	5	9	7	21	1.48%
TOTAL	270	268	293	316	275	1422	100.00%

CONTRIBUTING FACTORS TO MAINE HIGHWAY PEDESTRIAN CRASHES 2011-2013

Due to changes in the new crash report, making contributing factors drastically different, needed to use only new categories here.

DRIVER ACTIONS (actions 1 & 2 combined)	2011	2012	2013	2014	2015
NO CONTRIBUTING ACTION	94	115	119		
RAN OFF ROADWAY	3	2	3		
FAILED TO YIELD RIGHT-OF-WAY	69	70	53		
RAN RED LIGHT	1	1	0		
RAN STOP SIGN	0	3	2		
DISREGARDED OTHER TRAFFIC SIGN	1	1	5		
DISREGARDED OTHER ROAD MARKINGS	8	7	1		
EXCEEDED POSTED SPEED LIMIT	2	1	1		
DROVE TOO FAST FOR CONDITIONS	1	5	4		
IMPROPER TURN	1	6	2		
IMPROPER BACKING	11	7	8		
IMPROPER PASSING	3	0	1		
WRONG WAY	0	0	0		
FOLLOWED TOO CLOSELY	1	0	0		
FAILED TO KEEP IN PROPER LANE	4	7	5		
OPERATED MOTOR VEHICLE IN ERRATIC, RECKLESS, CARELESS, NEGLIGENT OR AGGRESSIVE MANNER	17	16	15		
SWERVED OR AVOIDED DUE TO WIND, SLIPPERY SURFACE, MOTOR VEHICLE, OBJECT, NON-MOTORIST IN ROADWAY	3	5	6		
OVER-CORRECTING/OVER-STEERING	0	1			
OTHER CONTRIBUTING ACTION	19	36	13		
UNKNOWN	22	26	18		
PEDESTRIAN ACTIONS	260	309	256		
CROSSING WITH SIGNAL	21	17	19		
CROSSING AGAINST SIGNAL	13	17	21		
CROSSING MARKED CROSSWALK (no signal)	52	68	41		
CROSSING NO SIGNAL OR CROSSWALK	75	68	65		
WALKING IN ROAD WITH TRAFFIC	19	26	22		
WALKING IN ROAD AGAINST TRAFFIC	7	16	6		
STANDING IN ROAD	14	16	14		
EMERGING FROM BEHIND PARKED CAR	4	7	3		
CHILD GETTING ON/OFF SCHOOL BUS	1	2	0		
GETTING ON/OFF VEHICLE	1	4	3		
PUSHING OR WORKING ON VEHICLE	0	0	1		
WORKING IN ROAD	9	2	5		
PLAYING IN ROAD	5	1	3		
NOT IN ROAD	16	7	7		
FOLLOWING TRAIL	0	0	2		
WALKING ON SIDEWALK	9	14	15		
WALKING ADJACENT TO ROADWAY	13	12	8		
WALKING TO/FROM SCHOOL	0	0	0		
OTHER PEDESTRIAN ACTION	28	33	33		
VEHICULAR FACTORS	287	310	268		
NONE	349	268	224		
BRAKES	1	2	0		
EXHAUST SYSTEM	0	0	0		
BODY, DOORS	0	0	0		
STEERING	0	0	0		
POWER TRAIN	0	0	1		
SUSPENSION	0	0	0		
TIRES	1	0	0		
WHEELS	0	0	0		
LIGHTS (head, signal, tail, brake)	4	0	1		
WINDOWS/WINDSHIELD	1	1	2		
MIRRORS	1	0	1		
WIPERS	0	0	0		
TRUCK COUPLING/TRAILER HITCH/SAFETY CHAINS	0	0	0		
OTHER	10	9	6		
	367	280	235		



P15

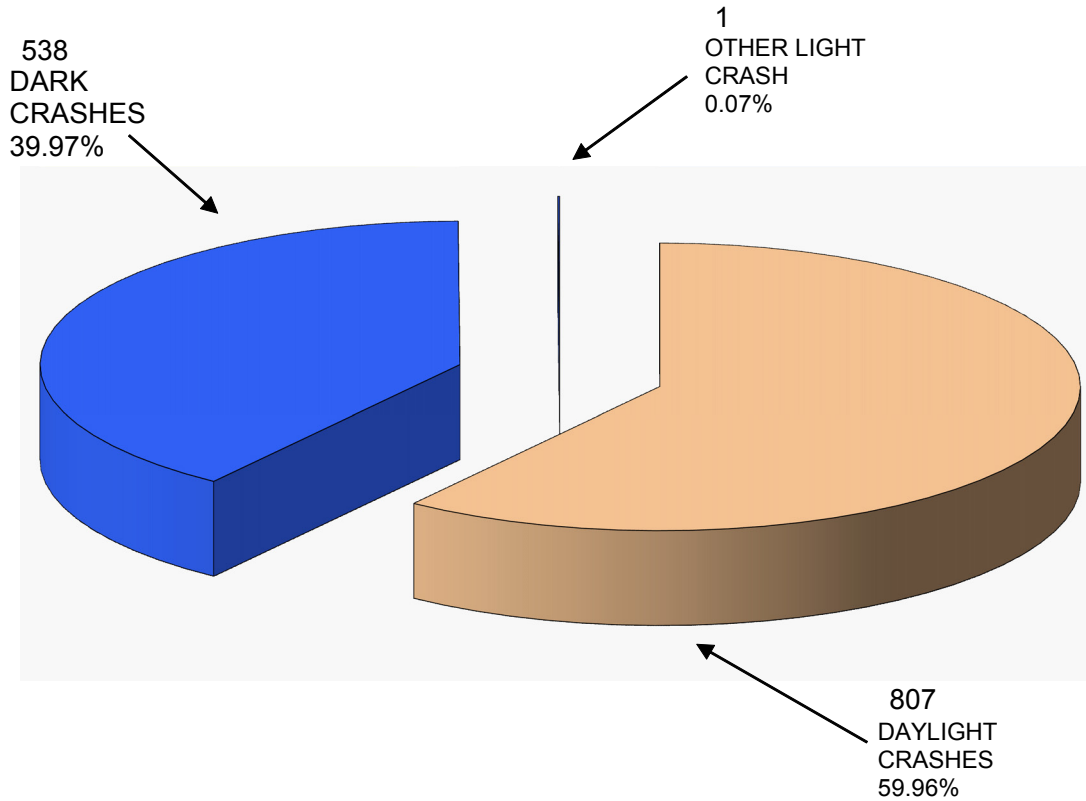
VEHICLES INVOLVED IN MAINE HIGHWAY PEDESTRIAN CRASHES 2009 - 2013



P16

VEHICLE TYPE INVOLVED IN PEDESTRIAN CRASHES	2009	2010	2011	2012	2013	FIVE YEAR TOTAL
PASSENGER CAR	126	129	165	172	146	738
(SPORT) UTILITY VEHICLE	25	33	38	48	44	188
PASSENGER VAN	3	4	3	14	8	32
CARGO VAN (10k or less)	7	12	5	0	2	26
PICKUP TRUCK	53	34	51	47	36	221
MOTOR HOME	0	0	0	0	0	0
SCHOOL BUS	0	1	1	3	0	5
TRANSIT BUS	2	0	0	1	0	3
MOTOR COACH	0	0	0	0	0	0
OTHER BUS	0	0	0	0	0	0
MOTORCYCLE	2	3	2	0	1	8
MOPED	0	1	0	0	0	1
LOW SPEED VEHICLE	0	0	0	1	0	1
AUTOCYCLE	0	0	0	0	0	0
EXPERIMENTAL	0	0	0	0	0	0
OTHER LIGHT TRUCK (10,000 lbs or less)	0	0	0	2	0	2
MEDIUM /HEAVY TRUCKS (more than 10,000 lbs)	1	4	6	4	7	22
ATV (2,3,4-WHEEL)	0	0	0	0	0	0
SNOWMOBILE	0	0	0	0	0	0
PEDESTRIAN	270	268	290	314	275	1417
BICYCLE	0	0	0	0	0	0
OTHER	4	4	8	14	18	48
TOTAL VEHICLES INVOLVED	493	493	569	620	537	2712

MAINE HIGHWAY PEDESTRIAN CRASHES By LIGHT CONDITION 2009 - 2013



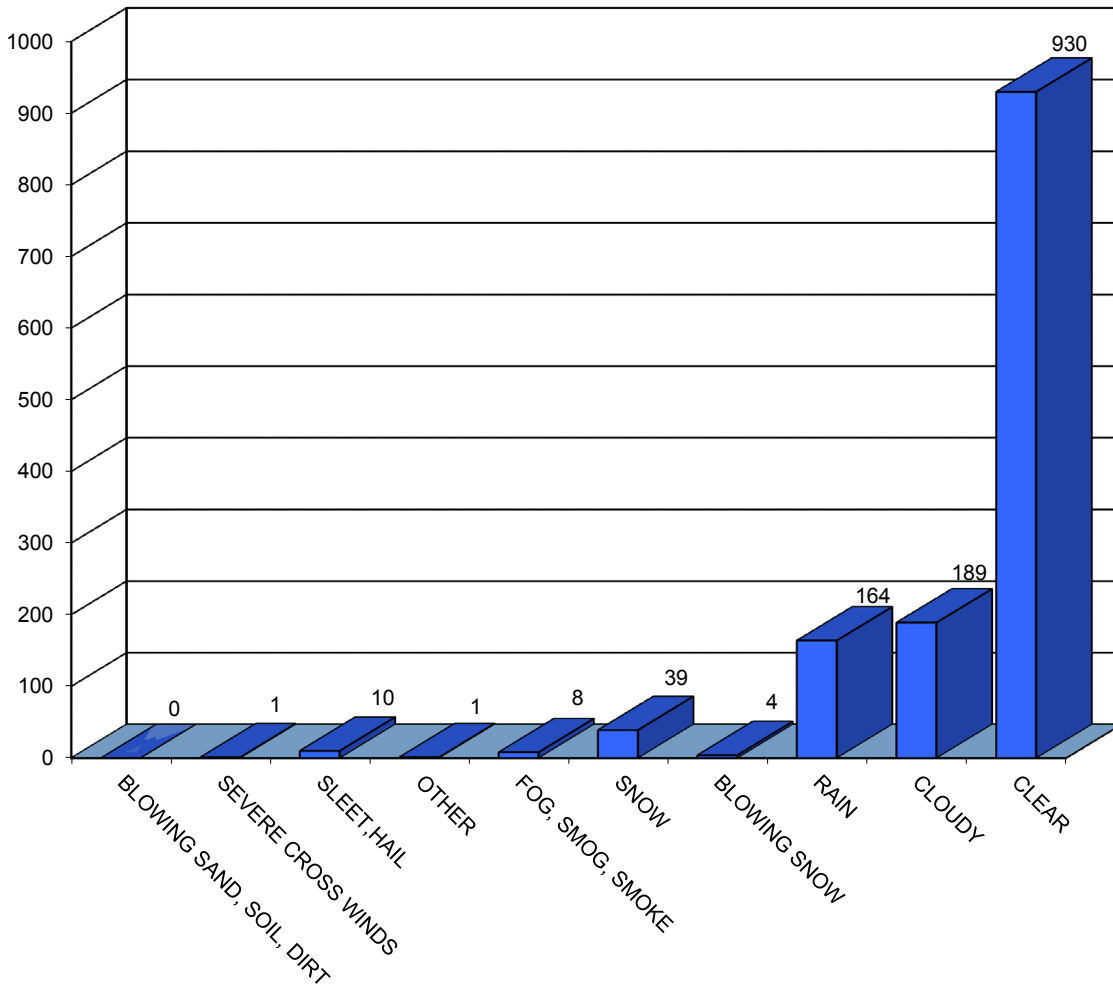
P17

LIGHT CONDITION	2009	2010	2011	2012	2013	FIVE YEAR TOTAL	PERCENT OF TOTAL
DAYLIGHT	138	162	166	179	162	807	59.96%
DARK	113	88	121	122	94	538	39.97%
OTHER	0	1	0	0	0	1	0.07%
TOTAL	251	251	287	301	256	1346	100.00%

MAINE HIGHWAY PEDESTRIAN CRASHES BY WEATHER CONDITIONS 2009 - 2013

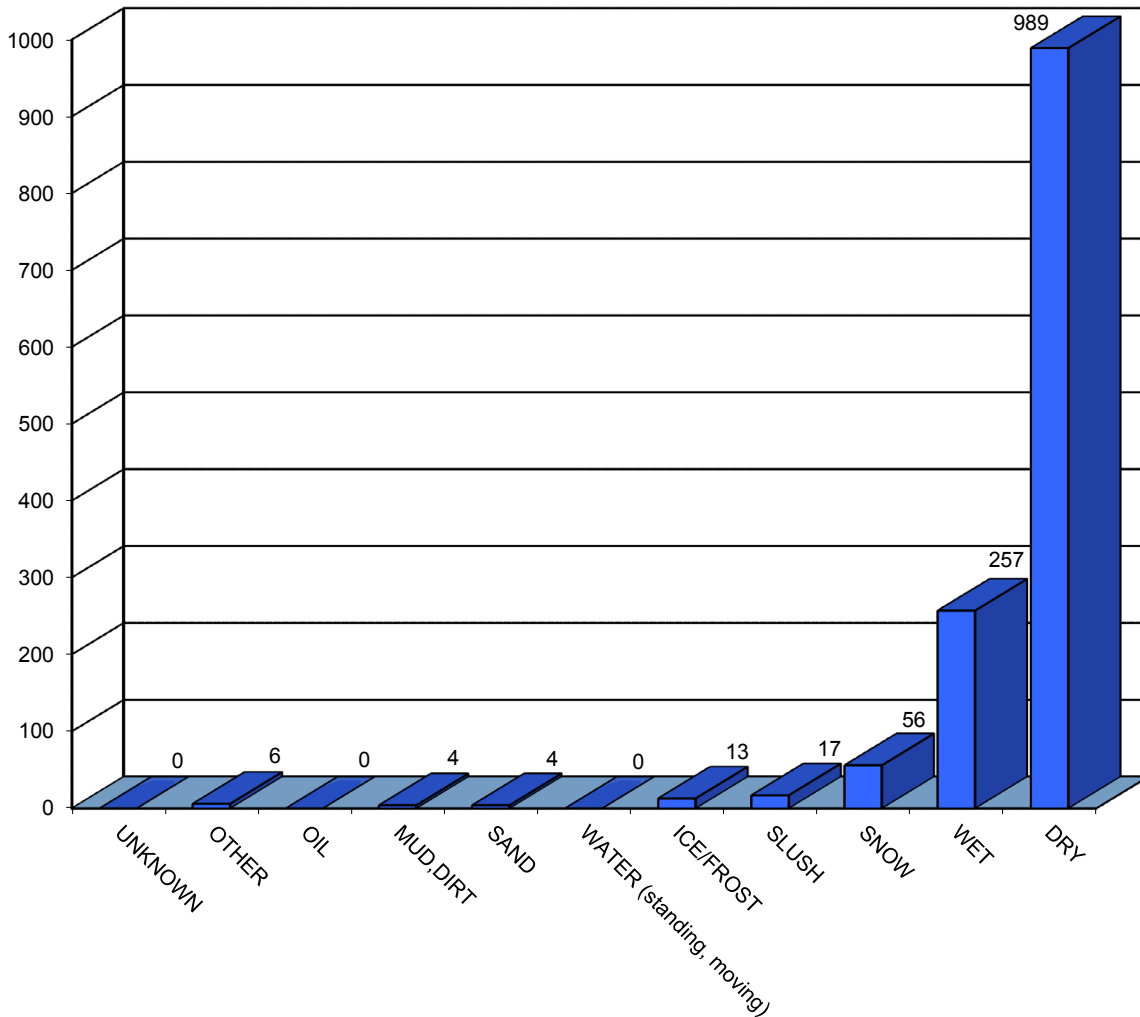


P18



WEATHER CONDITIONS	2009	2010	2011	2012	2013	FIVE YEAR TOTAL
BLOWING SAND, SOIL, DIRT	0	0	0	0	0	0
SEVERE CROSS WINDS	0	0	0	0	1	1
SLEET, HAIL (freezing rain or drizzle)	0	0	2	3	5	10
OTHER	0	0	0	0	1	1
FOG, SMOG, SMOKE	1	2	4	1	0	8
SNOW	9	6	8	9	7	39
BLOWING SNOW	0	0	2	0	2	4
RAIN	31	30	35	38	30	164
CLOUDY	35	30	44	38	42	189
CLEAR	175	183	192	212	168	930
TOTAL	251	251	287	301	256	1346

MAINE HIGHWAY PEDESTRIAN CRASHES BY ROAD SURFACE CONDITIONS 2009 - 2013



P19

ROAD SURFACE CONDITIONS	2009	2010	2011	2012	2013	FIVE YEAR TOTAL
UNKNOWN	0	0	0	0	0	0
OTHER	4	2	0	0	0	6
OIL	0	0	0	0	0	0
MUD,DIRT	0	0	1	2	1	4
SAND	0	0	2	2	0	4
WATER (standing, moving)	0	0	0	0	0	0
ICE/FROST	0	0	7	4	2	13
SLUSH	0	0	4	5	8	17
SNOW	17	8	12	7	12	56
WET	50	48	51	60	48	257
DRY	180	193	210	221	185	989
TOTAL	251	251	287	301	256	1346

*09-10, figures that were previously WINTRY (old categories) were moved to SNOW (new categories)

STATE OF MAINE
HIGHWAY BICYCLE CRASHES
2009 - 2013

I.	PREFACE	1
II.	BICYCLE CRASH TABLES AND CHARTS 2009-2013	
	Crashes Summarized by:	
	County	2-5
	Severity	6-7
	Rural/Urban Designations	8
	Month	9
	Day of Week	10
	Time of Day	11
	Age Groups	12
	Age Groups by Gender	13
	Apparent Physical Condition	14
	Contributing Factors	15
	Vehicle Type	16
	Light Conditions	17
	Weather Conditions	18
	Road Surface Conditions	19

STATEWIDE BICYCLE CRASHES

2009 - 2013

Preface

This publication is a statistical review of reported motor vehicle crashes that involved bicycles in Maine during the five-year study period 2009 - 2013. The statistics are compiled from crash reports submitted to the Department of Transportation by the Traffic Division, Department of Public Safety. The Traffic Division receives all police uniform crash reports Form 13:20 A, from state, county and local police agencies.

The enclosed charts, graphs, listings and summaries were produced using the Department of Transportation's Computerized Crash Records System. Except for adjustments to locations and crash-type information for accuracy, no attempt has been made to modify the raw data received from the reporting agencies. However, because crash scenes are often dangerous and chaotic, some inaccuracies in data collection are possible.

A comparison of this report with other summaries of crashes and fatalities may also reveal inconsistencies due to changes in crash classification, late submittals, and differing reporting criteria.



B1

The Department of Transportation and the Department of Public Safety wish to express our sincere thank you to all law enforcement agencies and officers for the work they do on crash investigations. Without their dedication, this report would not be possible.

We welcome your comments and suggestions on this report at:

Maine Department of Transportation
Bureau of Maintenance and Operations
Traffic Engineering Division
Crash Records Section
16 State House Station
Augusta, ME 04333-0016

Tel: 207-624-3618
Fax: 207-624-3101

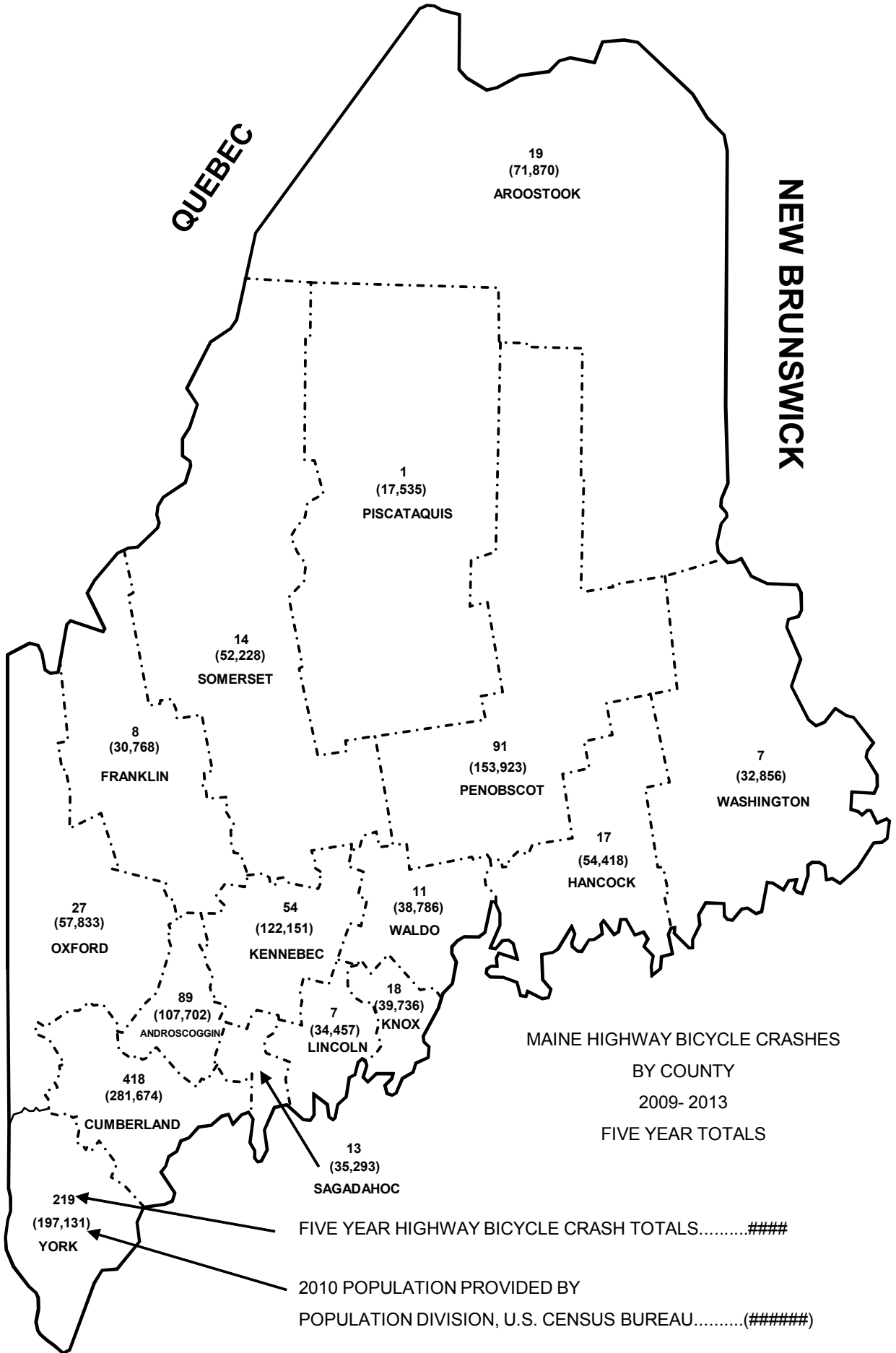


B2

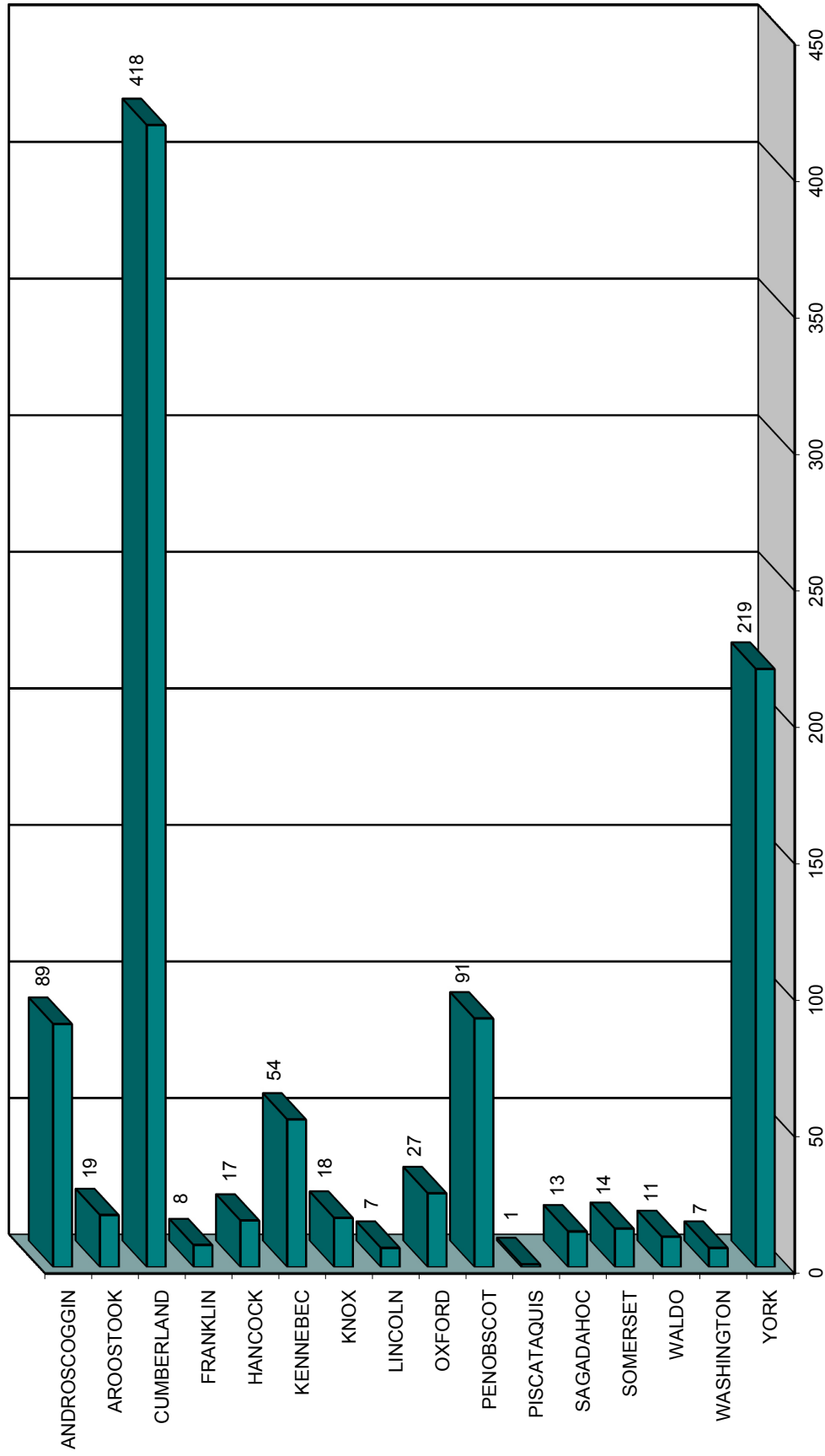
NEW HAMPSHIRE

QUEBEC

NEW BRUNSWICK



MAINE HIGHWAY BICYCLE CRASHES By County 2009 - 2013



MAINE HIGHWAY BICYCLE CRASH SEVERITY

BY COUNTY

2009 - 2013

COUNTY	INJURY TYPE	2009	2010	2011	2012	2013	TOTAL CRASHES	PERCENT OF TOTAL
ANDROSCOGGIN Percent personal injury 92.13%	FATAL (K)	0	0	0	0	0	0	0.00%
	INCAPACITATING (A)	0	2	4	5	1	12	1.18%
	NON-INCAPACITATING (B)	8	7	6	3	7	31	3.06%
	POSSIBLE INJURY (C)	8	11	9	6	5	39	3.85%
	PROPERTY DAMAGE ONLY (PDO)	1	0	3	2	1	7	0.69%
	COUNTY SUBTOTAL		17	20	22	16	14	89
AROOSTOOK Percent personal injury 100.00%	FATAL (K)	0	0	0	0	0	0	0.00%
	INCAPACITATING (A)	0	1	1	1	1	4	0.39%
	NON-INCAPACITATING (B)	1	2	1	3	2	9	0.89%
	POSSIBLE INJURY (C)	1	2	2	0	1	6	0.59%
	PROPERTY DAMAGE ONLY (PDO)	0	0	0	0	0	0	0.00%
	COUNTY SUBTOTAL		2	5	4	4	4	19
CUMBERLAND Percent personal injury 95.45%	FATAL (K)	0	0	0	0	0	0	0.00%
	INCAPACITATING (A)	8	5	8	12	6	39	3.85%
	NON-INCAPACITATING (B)	32	27	38	33	38	168	16.58%
	POSSIBLE INJURY (C)	34	33	30	48	47	192	18.95%
	PROPERTY DAMAGE ONLY (PDO)	1	2	4	5	7	19	1.88%
	COUNTY SUBTOTAL		75	67	80	98	98	418
FRANKLIN Percent personal injury 100.00%	FATAL (K)	0	0	0	0	0	0	0.00%
	INCAPACITATING (A)	0	0	0	0	0	0	0.00%
	NON-INCAPACITATING (B)	0	2	2	0	0	4	0.39%
	POSSIBLE INJURY (C)	0	2	0	1	1	4	0.39%
	PROPERTY DAMAGE ONLY (PDO)	0	0	0	0	0	0	0.00%
	COUNTY SUBTOTAL		0	4	2	1	1	8
HANCOCK Percent personal injury 100.00%	FATAL (K)	0	1	0	0	0	1	0.10%
	INCAPACITATING (A)	0	0	1	1	0	2	0.20%
	NON-INCAPACITATING (B)	1	4	2	1	0	8	0.79%
	POSSIBLE INJURY (C)	0	1	5	0	0	6	0.59%
	PROPERTY DAMAGE ONLY (PDO)	0	0	0	0	0	0	0.00%
	COUNTY SUBTOTAL		1	6	8	2	0	17
KENNEBEC Percent personal injury 90.74%	FATAL (K)	0	0	0	0	1	1	0.10%
	INCAPACITATING (A)	0	1	1	2	1	5	0.49%
	NON-INCAPACITATING (B)	3	1	3	6	5	18	1.78%
	POSSIBLE INJURY (C)	3	3	13	5	1	25	2.47%
	PROPERTY DAMAGE ONLY (PDO)	0	0	2	1	2	5	0.49%
	COUNTY SUBTOTAL		6	5	19	14	10	54
KNOX Percent personal injury 100.00%	FATAL (K)	0	0	0	0	0	0	0.00%
	INCAPACITATING (A)	0	1	0	0	1	2	0.20%
	NON-INCAPACITATING (B)	1	2	2	0	1	6	0.59%
	POSSIBLE INJURY (C)	1	3	0	5	1	10	0.99%
	PROPERTY DAMAGE ONLY (PDO)	0	0	0	0	0	0	0.00%
	COUNTY SUBTOTAL		2	6	2	5	3	18
LINCOLN Percent personal injury 71.43%	FATAL (K)	0	0	0	0	0	0	0.00%
	INCAPACITATING (A)	0	0	1	0	0	1	0.10%
	NON-INCAPACITATING (B)	1	0	1	0	0	2	0.20%
	POSSIBLE INJURY (C)	1	0	1	0	0	2	0.20%
	PROPERTY DAMAGE ONLY (PDO)	0	0	1	0	1	2	0.20%
	COUNTY SUBTOTAL		2	0	4	0	1	7



MAINE HIGHWAY BICYCLE CRASH SEVERITY

BY COUNTY

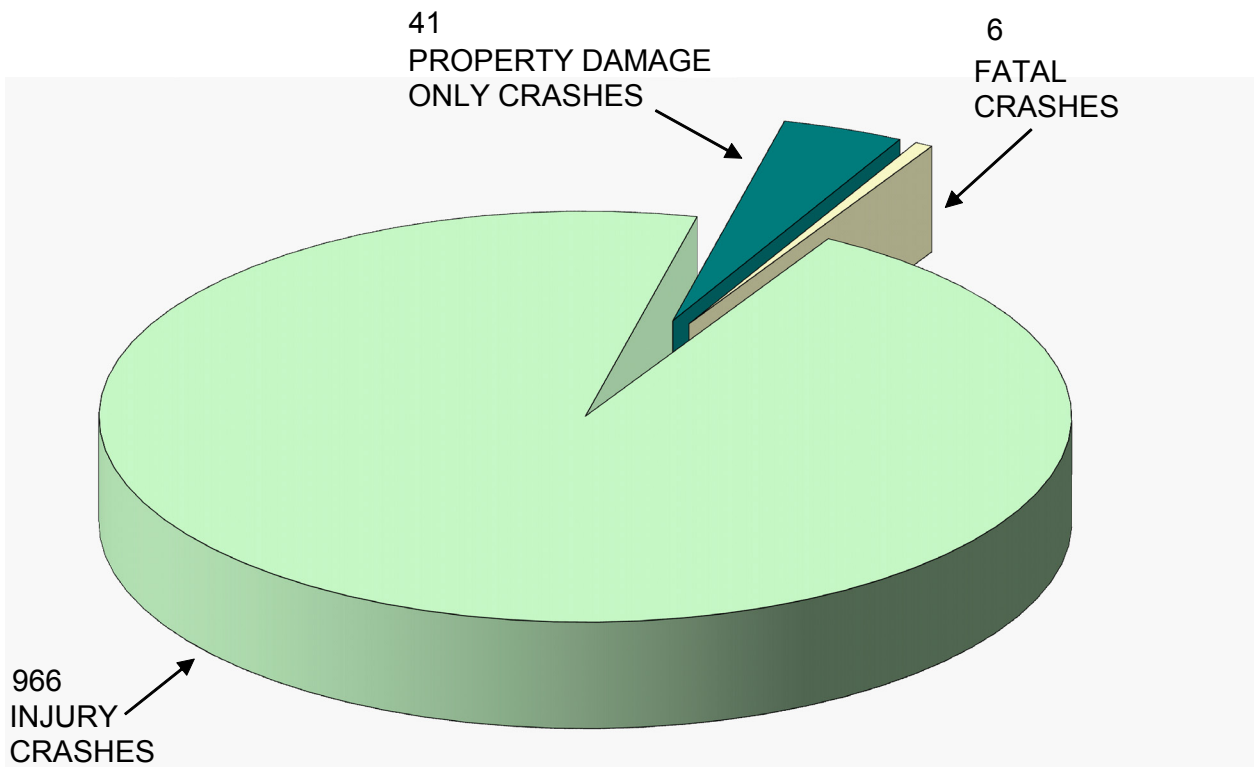
2009 - 2013

COUNTY	INJURY TYPE	2009	2010	2011	2012	2013	TOTAL CRASHES	PERCENT OF TOTAL
OXFORD Percent personal injury 100.00%	FATAL (K)	0	0	0	0	1	1	0.10%
	INCAPACITATING (A)	0	1	1	2	1	5	0.49%
	NON-INCAPACITATING (B)	1	1	3	3	0	8	0.79%
	POSSIBLE INJURY (C)	0	2	5	3	3	13	1.28%
	PROPERTY DAMAGE ONLY (PDO)	0	0	0	0	0	0	0.00%
	COUNTY SUBTOTAL		1	4	9	8	5	27
PENOBSCOT Percent personal injury 100.00%	FATAL (K)	0	0	0	0	1	1	0.10%
	INCAPACITATING (A)	0	2	2	5	6	15	1.48%
	NON-INCAPACITATING (B)	12	9	7	7	7	42	4.15%
	POSSIBLE INJURY (C)	6	11	4	4	8	33	3.26%
	PROPERTY DAMAGE ONLY (PDO)	0	0	0	0	0	0	0.00%
	COUNTY SUBTOTAL		18	22	13	16	22	91
PISCATAQUIS Percent personal injury 100.00%	FATAL (K)	0	0	0	0	0	0	0.00%
	INCAPACITATING (A)	1	0	0	0	0	1	0.10%
	NON-INCAPACITATING (B)	0	0	0	0	0	0	0.00%
	POSSIBLE INJURY (C)	0	0	0	0	0	0	0.00%
	PROPERTY DAMAGE ONLY (PDO)	0	0	0	0	0	0	0.00%
	COUNTY SUBTOTAL		1	0	0	0	0	1
SAGadahoc Percent personal injury 100.00%	FATAL (K)	0	0	0	0	0	0	0.00%
	INCAPACITATING (A)	0	0	0	0	1	1	0.10%
	NON-INCAPACITATING (B)	2	3	1	0	0	6	0.59%
	POSSIBLE INJURY (C)	0	1	0	3	2	6	0.59%
	PROPERTY DAMAGE ONLY (PDO)	0	0	0	0	0	0	0.00%
	COUNTY SUBTOTAL		2	4	1	3	3	13
SOMERSET Percent personal injury 100.00%	FATAL (K)	0	0	0	0	0	0	0.00%
	INCAPACITATING (A)	2	0	0	0	0	2	0.20%
	NON-INCAPACITATING (B)	0	0	1	0	2	3	0.30%
	POSSIBLE INJURY (C)	0	4	1	1	3	9	0.89%
	PROPERTY DAMAGE ONLY (PDO)	0	0	0	0	0	0	0.00%
	COUNTY SUBTOTAL		2	4	2	1	5	14
WALDO Percent personal injury 100.00%	FATAL (K)	0	0	0	0	0	0	0.00%
	INCAPACITATING (A)	0	0	1	1	2	4	0.39%
	NON-INCAPACITATING (B)	0	2	0	0	3	5	0.49%
	POSSIBLE INJURY (C)	1	0	0	0	1	2	0.20%
	PROPERTY DAMAGE ONLY (PDO)	0	0	0	0	0	0	0.00%
	COUNTY SUBTOTAL		1	2	1	1	6	11
WASHINGTON Percent personal injury 100.00%	FATAL (K)	0	0	0	0	0	0	0.00%
	INCAPACITATING (A)	0	0	1	0	0	1	0.10%
	NON-INCAPACITATING (B)	0	1	0	1	1	3	0.30%
	POSSIBLE INJURY (C)	1	0	1	1	0	3	0.30%
	PROPERTY DAMAGE ONLY (PDO)	0	0	0	0	0	0	0.00%
	COUNTY SUBTOTAL		1	1	2	2	1	7
YORK Percent personal injury 96.35%	FATAL (K)	0	0	0	1	1	2	0.20%
	INCAPACITATING (A)	1	5	9	4	1	20	1.97%
	NON-INCAPACITATING (B)	14	15	22	23	16	90	8.88%
	POSSIBLE INJURY (C)	20	24	26	13	16	99	9.77%
	PROPERTY DAMAGE ONLY (PDO)	4	1	0	1	2	8	0.79%
	COUNTY SUBTOTAL		39	45	57	42	36	219
COUNTY GRAND TOTAL Percent personal injury 95.95%	FATAL (K)	0	1	0	1	4	6	0.59%
	INCAPACITATING (A)	12	18	30	33	21	114	11.25%
	NON-INCAPACITATING (B)	76	76	89	80	82	403	39.78%
	POSSIBLE INJURY (C)	76	97	97	90	89	449	44.32%
	PROPERTY DAMAGE ONLY (PDO)	6	3	10	9	13	41	4.05%
	GRAND TOTAL		170	195	226	213	209	1013

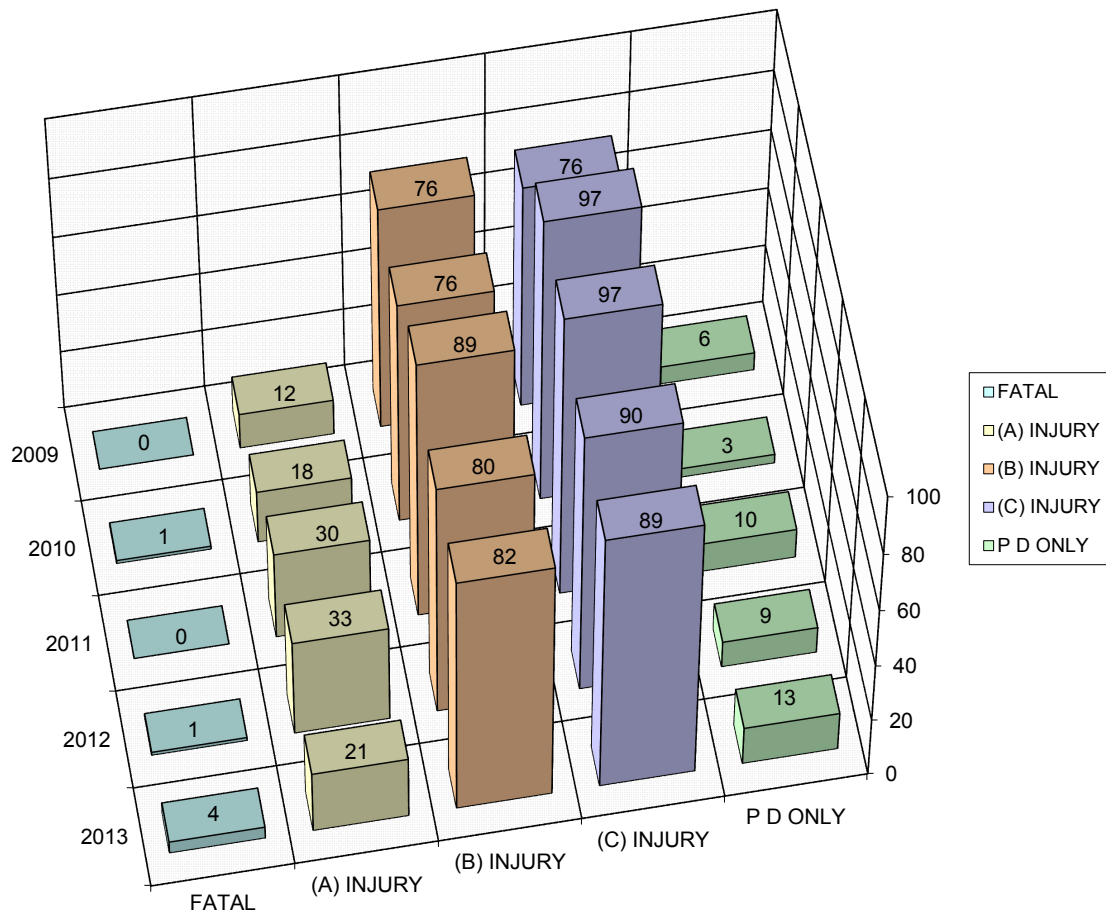


MAINE HIGHWAY BICYCLE CRASHES 2009 - 2013

1,013 TOTAL BICYCLE CRASHES



MAINE HIGHWAY BICYCLE CRASH SEVERITY BY YEAR 2009 - 2013



YEAR	FATAL CRASH (K)	INCAPACITATING INJURY (A)	NON INCAPACITATING INJURY (B)	POSSIBLE INJURY (C)	PROPERTY DAMAGE ONLY (PDO)	TOTAL CRASHES
2009	0	12	76	76	6	170
2010	1	18	76	97	3	195
2011	0	30	89	97	10	226
2012	1	33	80	90	9	213
2013	4	21	82	89	13	209
TOTAL	6	114	403	449	41	1013
PERCENT	0.59%	PERCENT INJURY CRASHES =		95.36%	4.05%	100.00%

(K) = Fatal injury. A fatal injury is any injury that results in death.

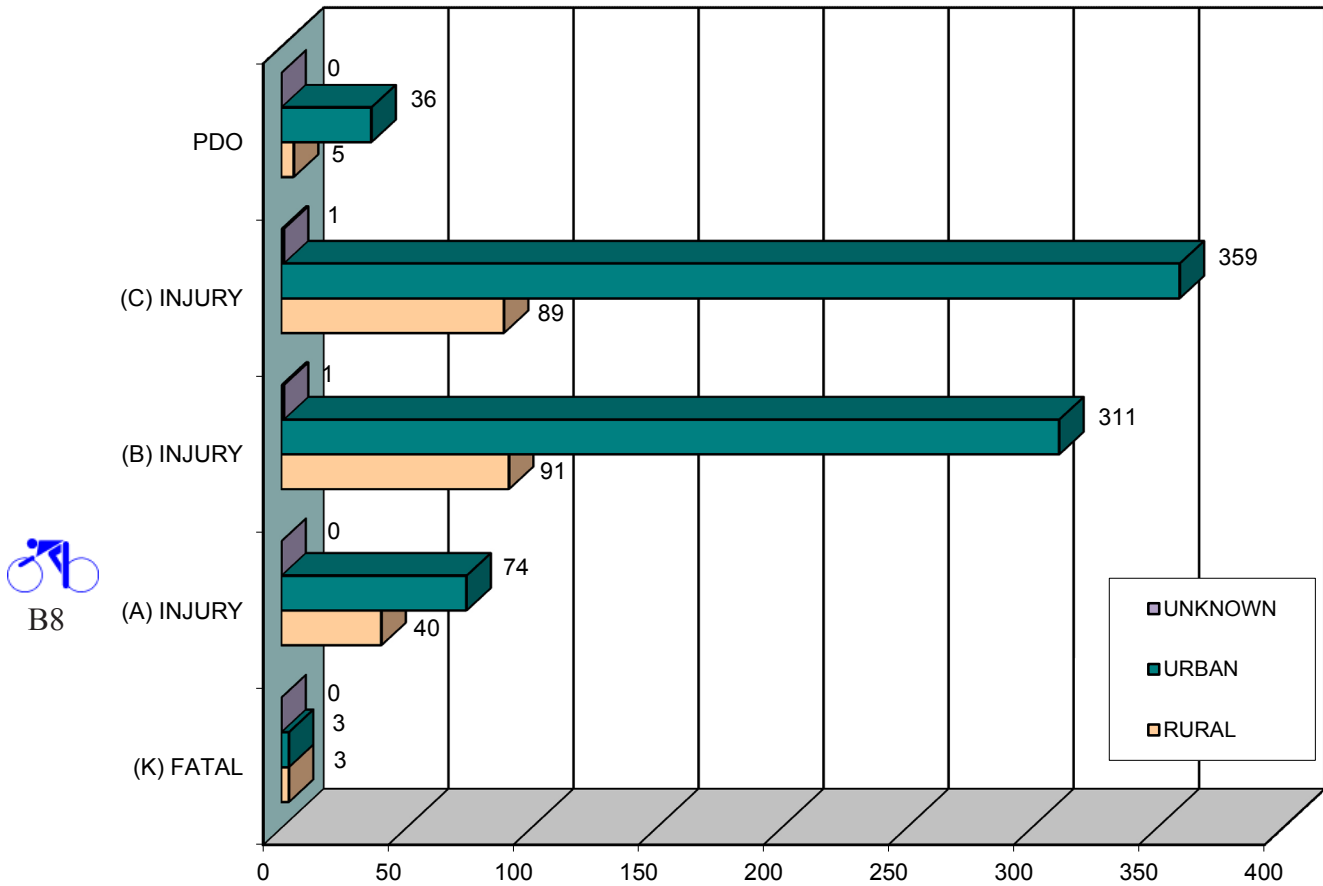
(A) = Incapacitating injury. An Incapacitating injury is any injury, other than a fatal injury, which prevents the injured person from walking, driving or normally continuing the activities the person was capable of performing before the injury occurred.

(B) = Nonincapacitating injury. A Nonincapacitating injury is any injury, other than fatal injury or an incapacitating injury, which is evident to observers at the scene of the accident in which the injury occurred.

(C) = Possible injury. A possible injury is any injury reported or claimed which is not a fatal injury, incapacitating injury or nonincapacitating injury.

(PDO) = Property Damage only. Damage is harm to property that reduces the monetary value of that property.

MAINE HIGHWAY BICYCLE CRASH SEVERITY BY RURAL URBAN DESIGNATION 2009 - 2013

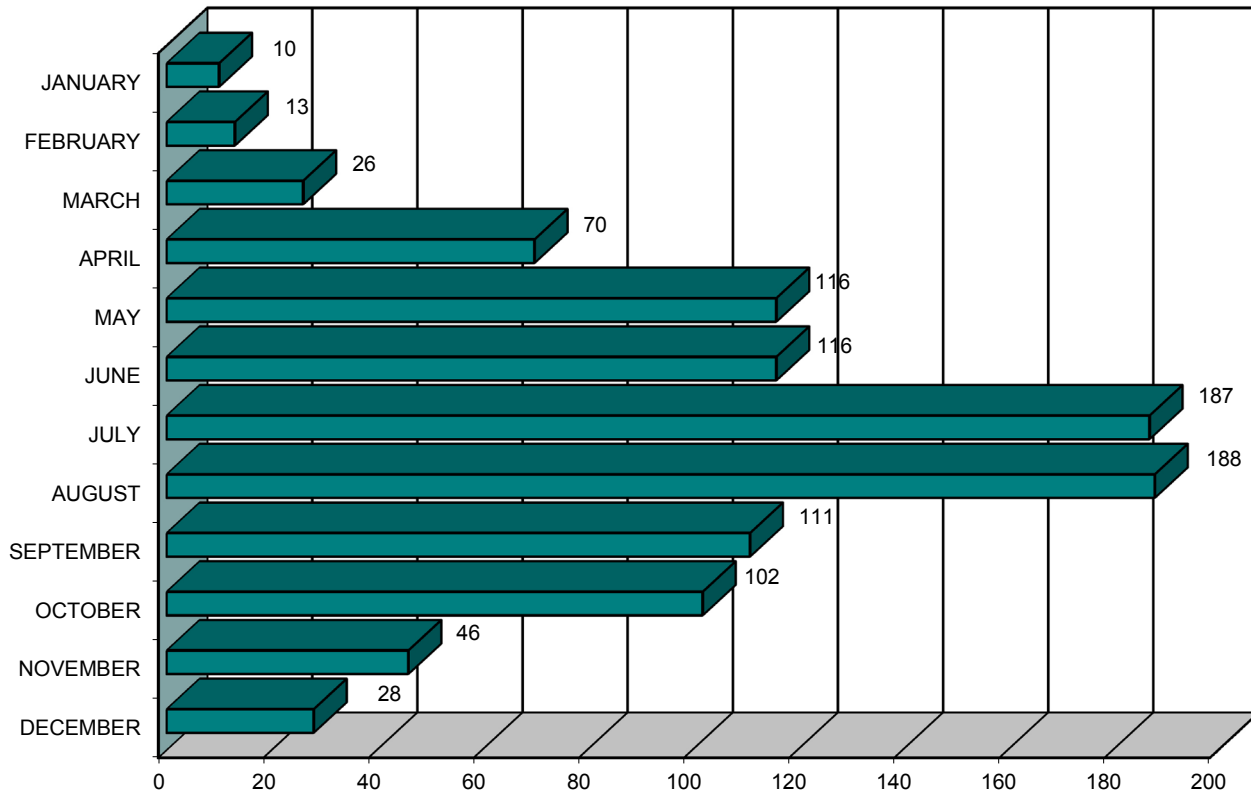


RURAL URBAN DESIGNATION	FATAL CRASH (K)	INCAPACITATING INJURY (A)	NON INCAPACITATING INJURY (B)	POSSIBLE INJURY (C)	PROPERTY DAMAGE ONLY (PDO)	FIVE YEAR TOTAL
RURAL (1)	3	40	91	89	5	228
URBAN (2)	3	74	311	359	36	783
UNKNOWN	0	0	1	1	0	2
TOTAL	6	114	403	449	41	1013

MAINE HIGHWAY BICYCLE CRASHES

BY MONTH

2009 - 2013

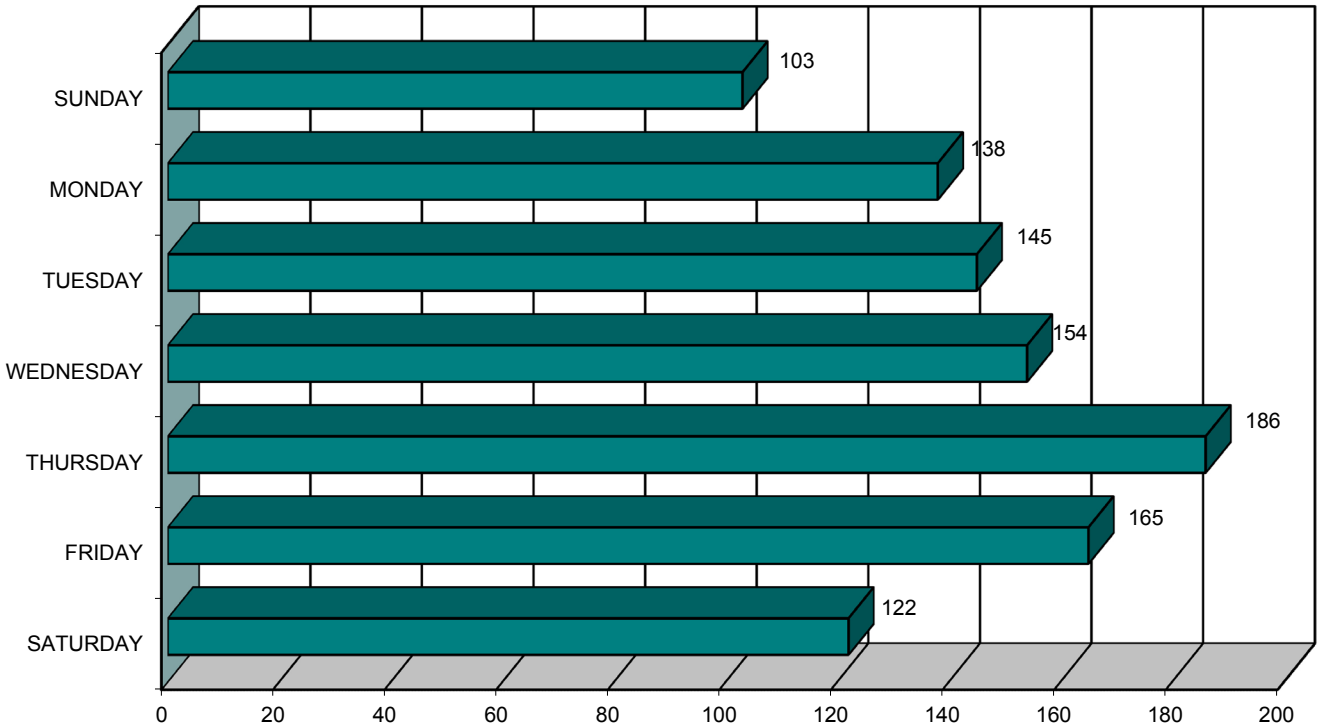


MONTH	2009	2010	2011	2012	2013	FIVE YEAR TOTAL	PERCENT OF TOTAL
JANUARY	0	3	1	3	3	10	0.99%
FEBRUARY	3	1	1	1	7	13	1.28%
MARCH	5	7	1	9	4	26	2.57%
APRIL	11	18	11	14	16	70	6.91%
MAY	20	28	26	21	21	116	11.45%
JUNE	23	15	29	26	23	116	11.45%
JULY	23	31	46	43	44	187	18.46%
AUGUST	29	42	53	33	31	188	18.56%
SEPTEMBER	26	16	20	22	27	111	10.96%
OCTOBER	19	18	19	23	23	102	10.07%
NOVEMBER	9	10	10	9	8	46	4.54%
DECEMBER	2	6	9	9	2	28	2.76%
TOTAL	170	195	226	213	209	1013	100.00%

MAINE HIGHWAY BICYCLE CRASHES

BY DAY OF THE WEEK

2009 - 2013



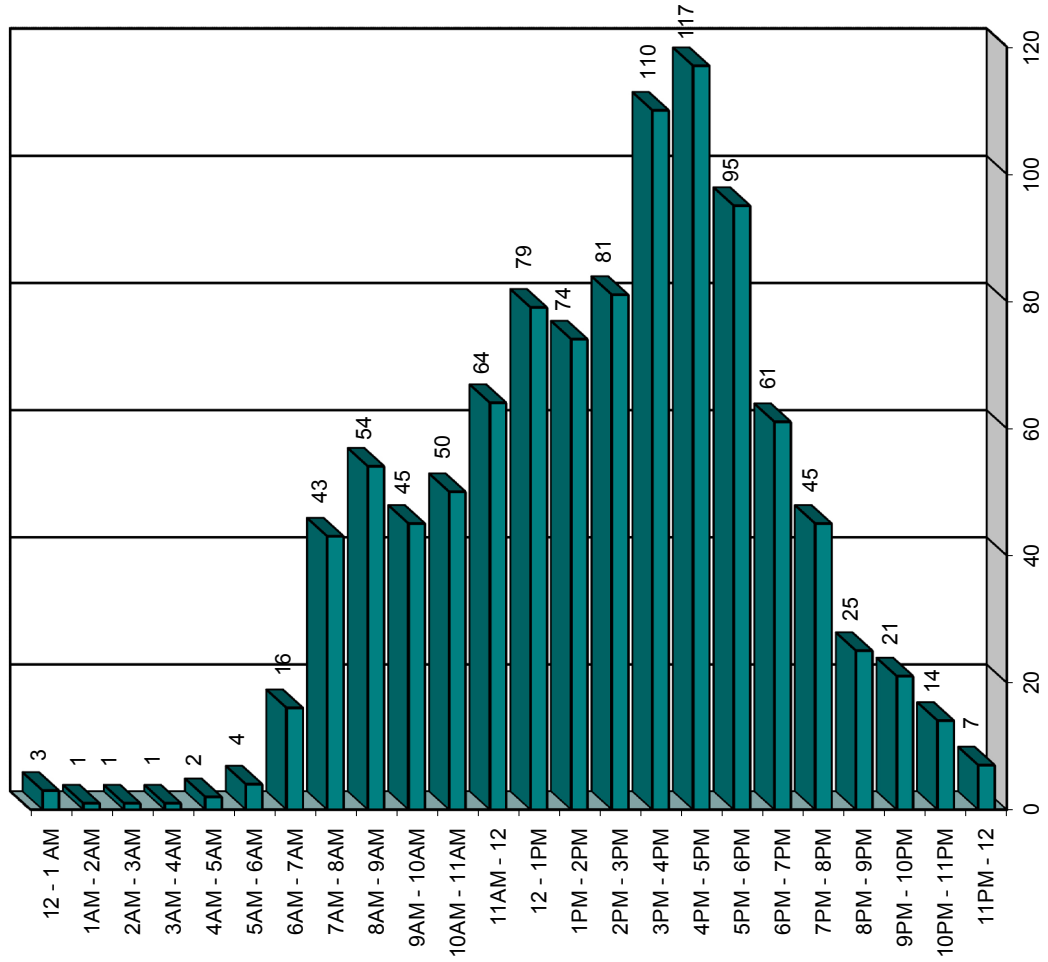
DAY OF THE WEEK	2009	2010	2011	2012	2013	FIVE YEAR TOTAL	PERCENT OF TOTAL
SUNDAY	11	18	26	25	23	103	10.17%
MONDAY	24	23	29	31	31	138	13.62%
TUESDAY	25	31	30	32	27	145	14.31%
WEDNESDAY	26	34	35	26	33	154	15.20%
THURSDAY	37	39	44	32	34	186	18.36%
FRIDAY	32	24	34	41	34	165	16.29%
SATURDAY	15	26	28	26	27	122	12.04%
TOTAL	170	195	226	213	209	1013	100.00%

MAINE HIGHWAY BICYCLE CRASHES

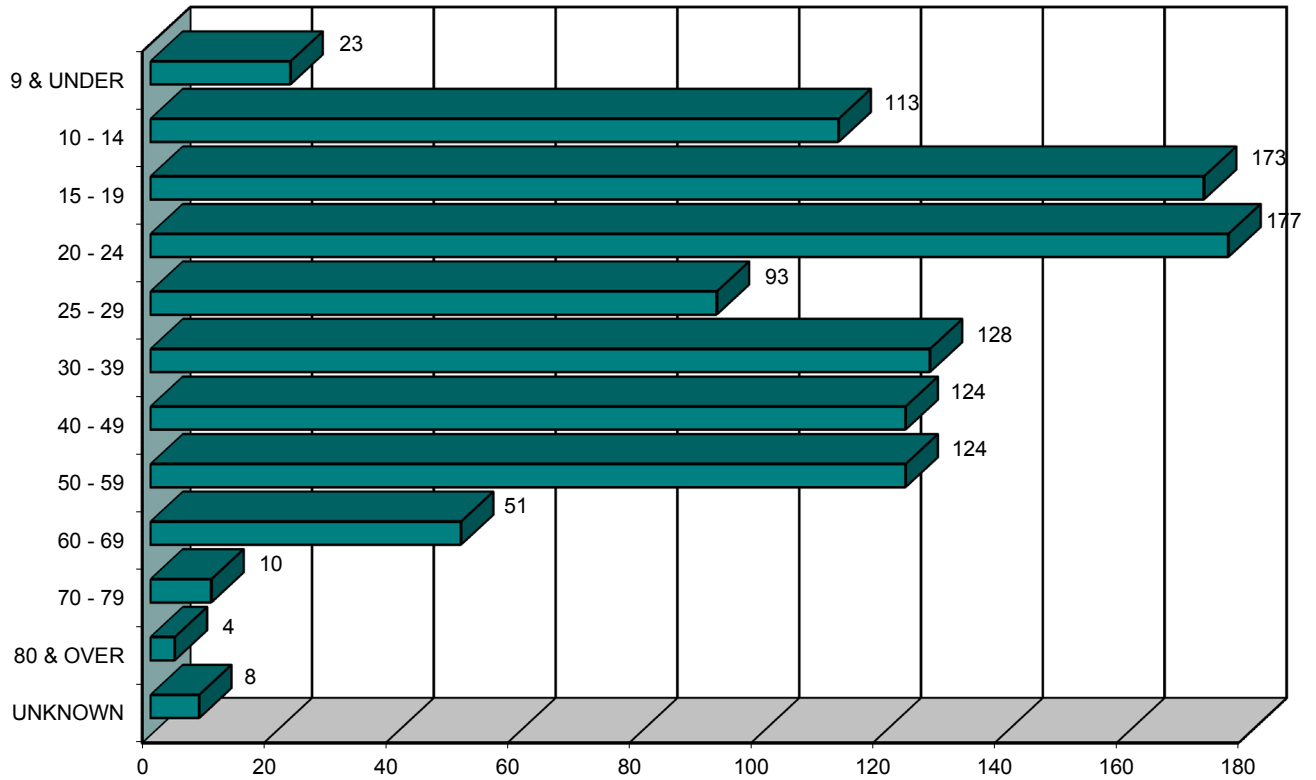
BY TIME OF DAY

2009 - 2013

TIME OF DAY	2009	2010	2011	2012	2013	FIVE YEAR TOTAL
12 - 1 AM	0	1	1	1	0	3
1AM - 2AM	0	0	1	0	0	1
2AM - 3AM	0	0	0	0	1	1
3AM - 4AM	0	0	0	1	0	1
4AM - 5AM	1	1	0	0	0	2
5AM - 6AM	0	1	0	2	1	4
6AM - 7AM	1	3	2	6	4	16
7AM - 8AM	8	10	11	5	9	43
8AM - 9AM	12	6	10	10	16	54
9AM - 10AM	7	6	13	13	6	45
10AM - 11AM	7	11	11	10	11	50
11AM - 12	6	12	18	17	11	64
12 - 1PM	12	16	19	13	19	79
1PM - 2PM	13	17	14	17	13	74
2PM - 3PM	13	16	16	17	19	81
3PM - 4PM	21	22	21	21	25	110
4PM - 5PM	16	26	32	23	20	117
5PM - 6PM	21	14	18	19	23	95
6PM - 7PM	13	16	12	13	7	61
7PM - 8PM	6	6	10	13	10	45
8PM - 9PM	3	3	8	4	7	25
9PM - 10PM	4	4	5	3	5	21
10PM - 11PM	5	1	3	4	1	14
11PM - 12	1	3	1	1	1	7
TOTAL	170	195	226	213	209	1013

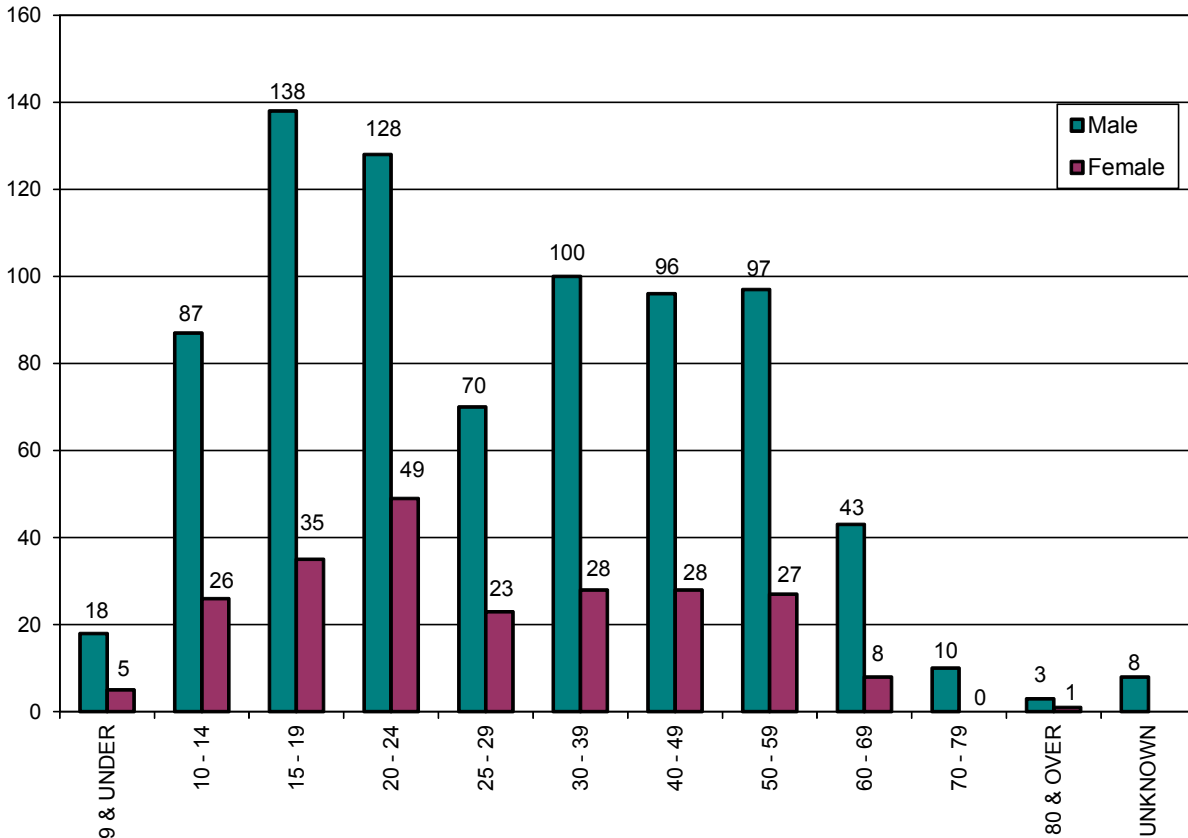


BICYCLISTS INVOLVED IN MAINE HIGHWAY CRASHES BY AGE GROUP 2009 - 2013



AGE OF BICYCLIST	2009	2010	2011	2012	2013	FIVE YEAR TOTAL	PERCENT OF TOTAL
9 & UNDER	5	6	8	2	2	23	2.24%
10 - 14	21	28	27	21	16	113	10.99%
15 - 19	35	43	35	32	28	173	16.83%
20 - 24	31	32	33	39	42	177	17.22%
25 - 29	14	17	21	20	21	93	9.05%
30 - 39	19	18	31	32	28	128	12.45%
40 - 49	19	16	30	32	27	124	12.06%
50 - 59	20	18	27	23	36	124	12.06%
60 - 69	6	13	12	12	8	51	4.96%
70 - 79	0	4	3	1	2	10	0.97%
80 & OVER	0	2	1	0	1	4	0.39%
UNKNOWN	0	1	3	2	2	8	0.78%
TOTAL	170	198	231	216	213	1028	100.00%

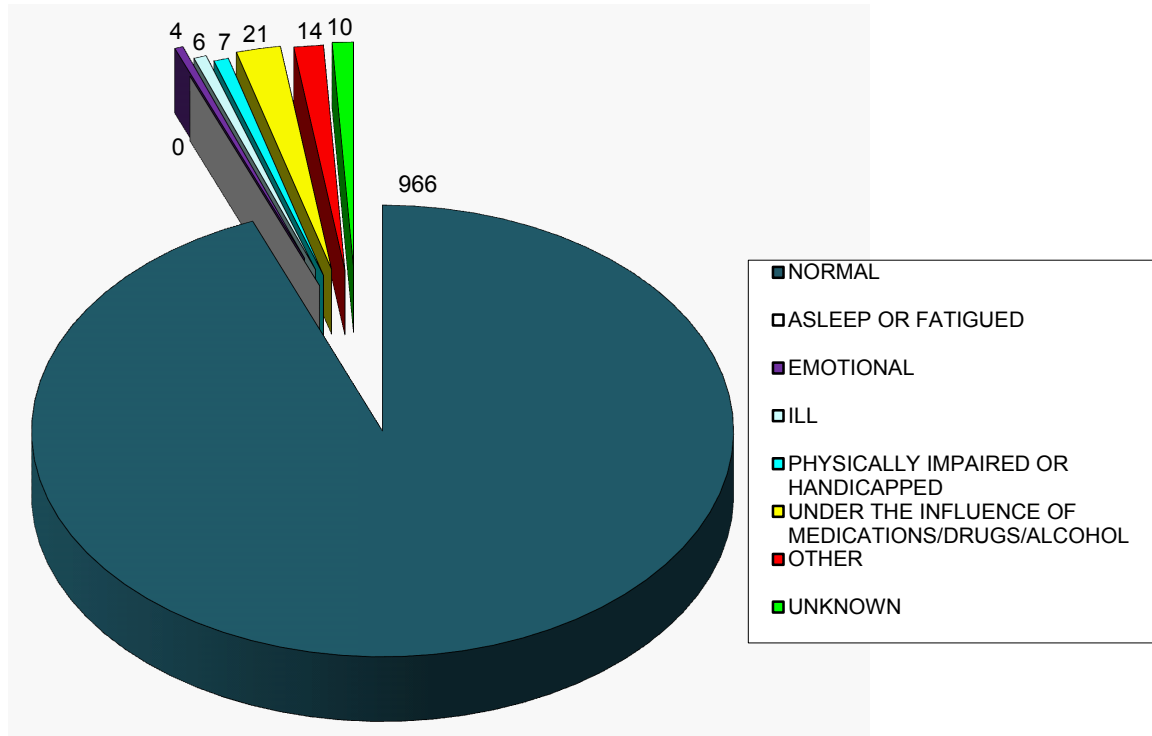
BICYCLISTS INVOLVED IN MAINE HIGHWAY CRASHES BY AGE GROUP AND GENDER 2009 - 2013



B13

AGE GROUP OF BICYCLIST BY GENDER	2009		2010		2011		2012		2013		TOTALS		FIVE YEAR TOTAL	PERCENT OF TOTAL
	M	F	M	F	M	F	M	F	M	F	M	F		
9 & UNDER	5	0	5	1	6	2	1	1	1	1	18	5	23	2.24%
10 - 14	18	3	21	7	20	7	16	5	12	4	87	26	113	10.99%
15 - 19	30	5	35	8	28	7	21	11	24	4	138	35	173	16.83%
20 - 24	21	10	24	8	24	9	28	11	31	11	128	49	177	17.22%
25 - 29	11	3	13	4	17	4	16	4	13	8	70	23	93	9.05%
30 - 39	13	6	16	2	25	6	24	8	22	6	100	28	128	12.45%
40 - 49	13	6	13	3	23	7	28	4	19	8	96	28	124	12.06%
50 - 59	16	4	11	7	21	6	19	4	30	6	97	27	124	12.06%
60 - 69	6	0	10	3	12	0	9	3	6	2	43	8	51	4.96%
70 - 79	0	0	4	0	3	0	1	0	2	0	10	0	10	0.97%
80 & OVER	0	0	1	1	1	0	0	0	1	0	3	1	4	0.39%
UNKNOWN	0	0	1	0	3	0	2	0	2	0	8	0	8	0.78%
TOTAL BY GENDER	133	37	153	44	180	48	163	51	161	50	790	230		
TOTAL	170		198		231		216		213		1028		1028	100.00%

MAINE HIGHWAY BICYCLE CRASHES BY APPARENT PHYSICAL CONDITIONS 2009 - 2013



BICYCLIST PHYSICAL CONDITION	2009	2010	2011	2012	2013	FIVE YEAR TOTAL	PERCENT OF TOTAL
APPARENTLY NORMAL	163	190	216	202	195	966	93.97%
ASLEEP OR FATIGUED	0	0	0	0	0	0	0.00%
EMOTIONAL (depressed, angry, disturbed, etc.)	0	0	1	2	1	4	0.39%
ILL (sick)	2	4	0	0		6	0.58%
PHYSICALLY IMPAIRED OR HANDICAPPED	1	0	2	3	1	7	0.68%
UNDER THE INFLUENCE OF MEDICATIONS/DRUGS/ALCOHOL	2	3	5	2	9	21	2.04%
OTHER	1	1	3	4	5	14	1.36%
UNKNOWN	1	0	4	3	2	10	0.97%
TOTAL	170	198	231	216	213	1028	100.00%

CONTRIBUTING FACTORS TO MAINE HIGHWAY BICYCLE CRASHES 2011 - 2013

Due to changes in the new crash report, making contributing factors drastically different, needed to use only new categories here.

DRIVER ACTIONS (actions 1 & 2 combined)	2011	2012	2013	2014	2015
NO CONTRIBUTING ACTION	123	123	107		
RAN OFF ROADWAY	0	1	2		
FAILED TO YIELD RIGHT-OF-WAY	54	58	60		
RAN RED LIGHT	0	0	1		
RAN STOP SIGN	3	4	4		
DISREGARDED OTHER TRAFFIC SIGN	0	1	0		
DISREGARDED OTHER ROAD MARKINGS	2	1	0		
EXCEEDED POSTED SPEED LIMIT	0	0	0		
DROVE TOO FAST FOR CONDITIONS	1	0	0		
IMPROPER TURN	5	5	7		
IMPROPER BACKING	1	4	1		
IMPROPER PASSING	3	2	1		
WRONG WAY	1	0	0		
FOLLOWED TOO CLOSELY	0	0	2		
FAILED TO KEEP IN PROPER LANE	5	4	1		
OPERATED MOTOR VEHICLE IN ERRATIC, RECKLESS, CARELESS, NEGLIGENT OR AGGRESSIVE MANNER	6	3	6		
SWERVED OR AVOIDED DUE TO WIND, SLIPPERY SURFACE, MOTOR VEHICLE, OBJECT, NON-MOTORIST IN ROADWAY	0	4	0		
OVER-CORRECTING/OVER-STEERING					
OTHER CONTRIBUTING ACTION	8	14	12		
UNKNOWN	13	9	20		
BICYCLIST ACTIONS	225	233	224		
RIDING WITH TRAFFIC	68	91	98		
RIDING AGAINST TRAFFIC	53	38	29		
MAKING RIGHT TURN	2	3	0		
MAKING LEFT TURN	10	10	8		
MAKING U TURN	1	0	1		
RIDING ACROSS ROAD	56	42	43		
SLOWING, STOPPING, STARTING IN ROAD	3	3	9		
OTHER BYCLIST ACTION	11	14	10		
UNKNOWN	3	1	4		
VEHICULAR FACTORS	207	202	202		
NONE	249	209	193		
BRAKES	2	3	0		
EXHAUST SYSTEM	0	0	0		
BODY, DOORS	4	2	1		
STEERING	0	0	0		
POWER TRAIN	0	0	0		
SUSPENSION	0	0	0		
TIRES	0	0	0		
WHEELS	0	0	0		
LIGHTS (head, signal, tail, brake)	0	0	0		
WINDOWS/WINDSHIELD	0	0	0		
MIRRORS	0	0	0		
WIPERS	0	0	0		
TRUCK COUPLING/TRAILER HITCH/SAFETY CHAINS	0	0	0		
OTHER	5	1	6		
	260	215	200		



VEHICLES INVOLVED IN MAINE HIGHWAY BICYCLE CRASHES 2009 - 2013

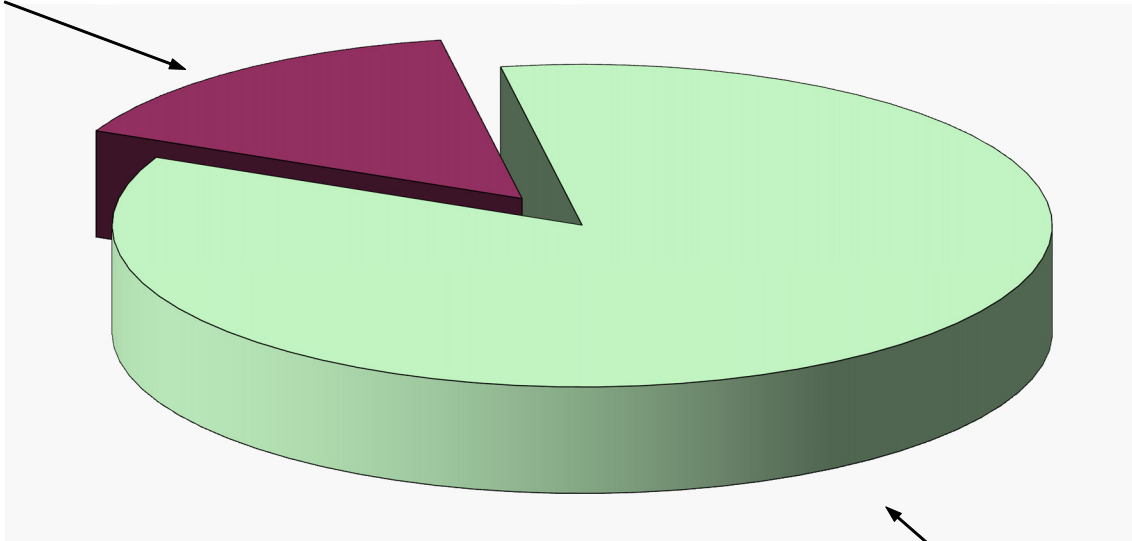
VEHICLE TYPE INVOLVED IN BICYCLE CRASHES	2009	2010	2011	2012	2013	FIVE YEAR TOTAL
PASSENGER CAR	97	114	142	125	117	595
(SPORT) UTILITY VEHICLE	26	22	41	31	34	154
PASSENGER VAN	3	4	1	10	7	25
CARGO VAN (10k or less)	10	12	1	2	2	27
PICKUP TRUCK	22	30	36	37	38	163
MOTOR HOME	0	0	0	0	0	0
SCHOOL BUS	1	1	0	0	0	2
TRANSIT BUS	0	1	0	2	1	4
MOTOR COACH	0	0	0	0	0	0
OTHER BUS	0	0	0	0	0	0
MOTORCYCLE	0	2	1	2	1	6
MOPED	0	0	0	1	0	1
LOW SPEED VEHICLE	0	0	0	0	0	0
AUTOCYCLE	0	0	0	1	0	1
EXPERIMENTAL	0	0	0	0	0	0
OTHER LIGHT TRUCK (10,000 lbs or less)	0	0	1	0	0	1
MEDIUM /HEAVY TRUCKS (more than 10,000 lbs)	3	1	2	0	3	9
ATV (2,3,4-WHEEL)	0	0	0	0	0	0
SNOWMOBILE	0	0	0	0	0	0
PEDESTRIAN	0	0	0	1	0	1
BICYCLE	170	198	231	216	213	1028
OTHER	4	1	7	3	13	28
TOTAL VEHICLES INVOLVED	336	386	463	431	429	2045



B16

MAINE HIGHWAY BICYCLE CRASHES BY LIGHT CONDITION 2009 - 2013

155
DARK
CRASHES
15.30%



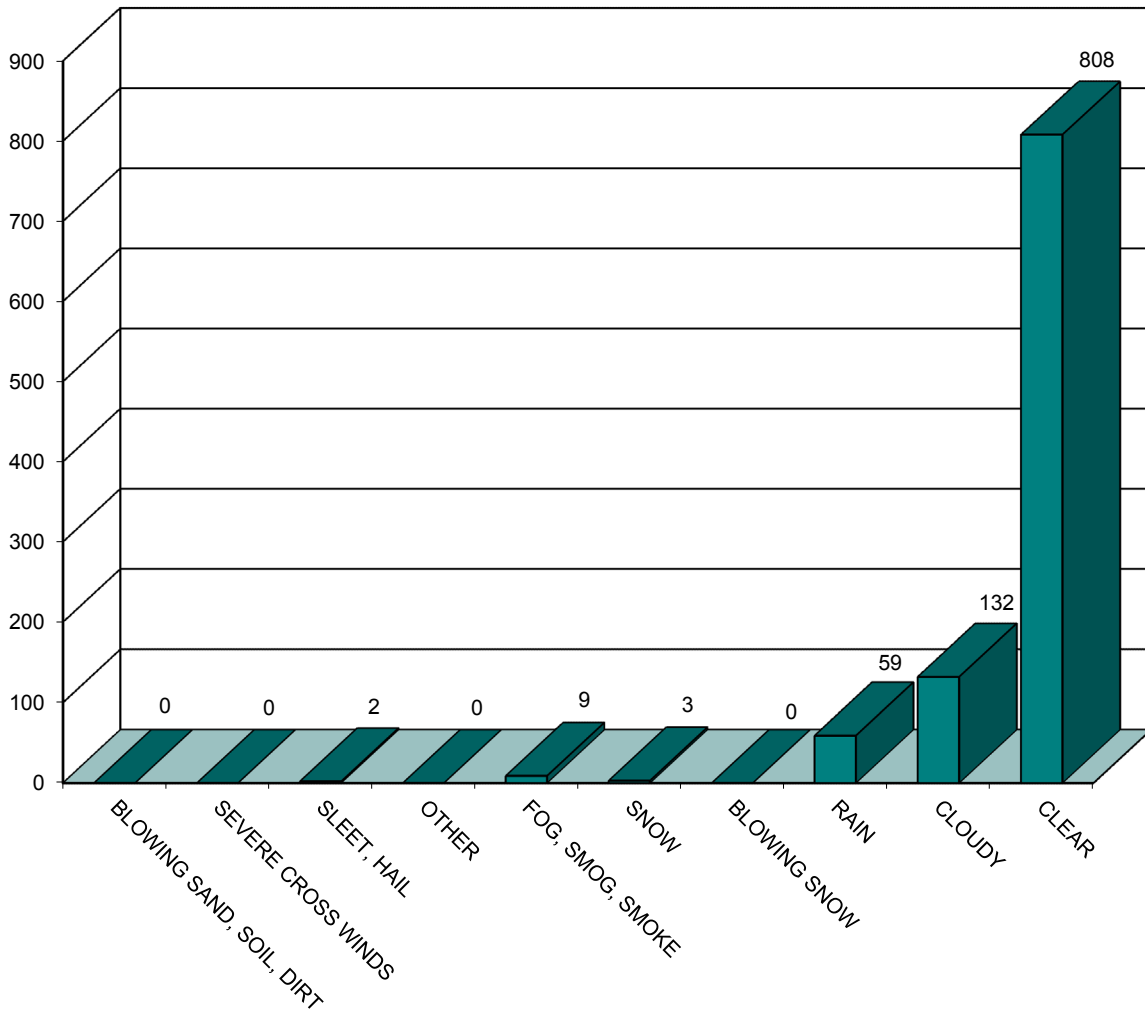
858
DAYLIGHT
CRASHES
84.70%



B17

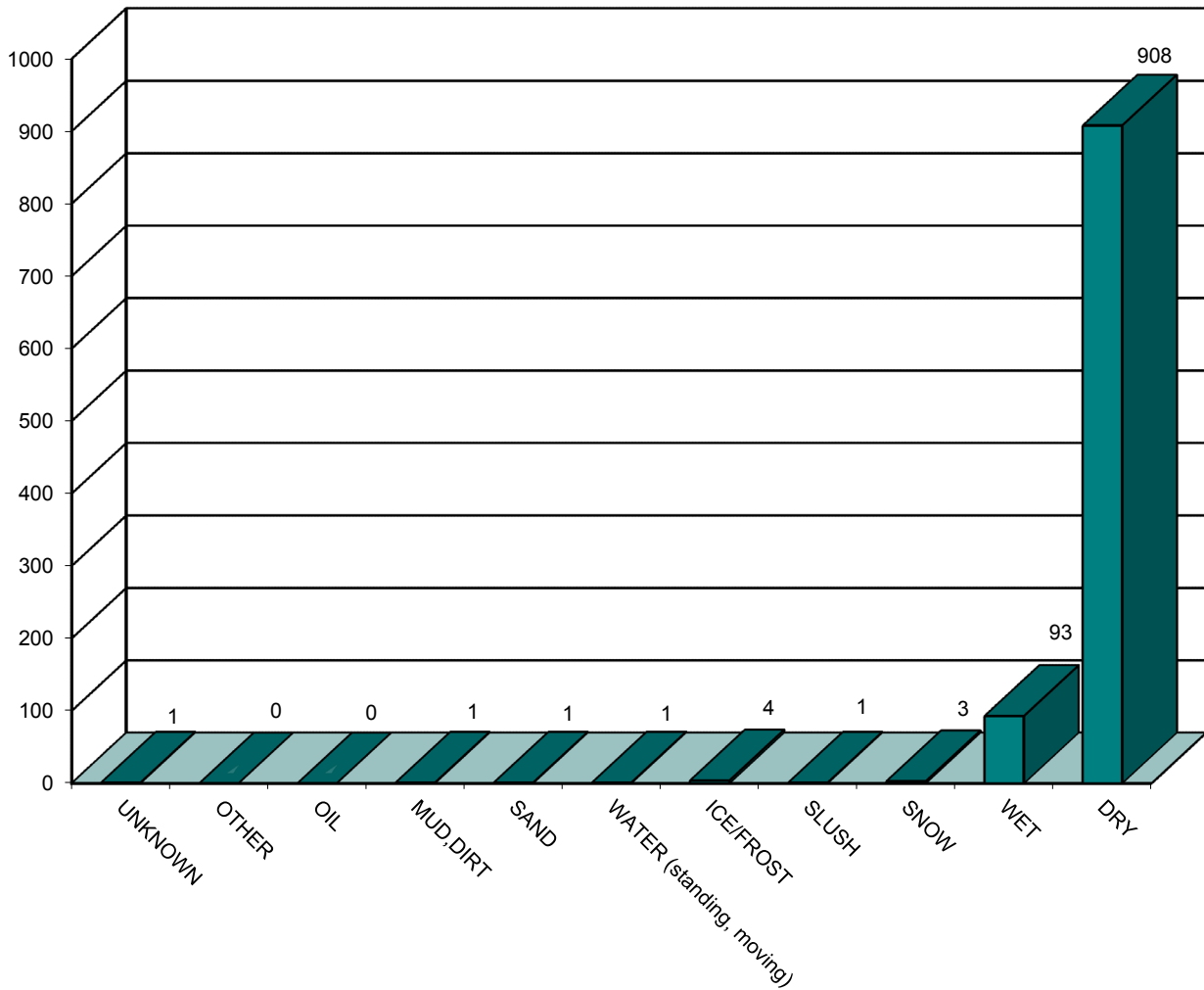
LIGHT CONDITION	2009	2010	2011	2012	2013	FIVE YEAR TOTAL	PERCENT OF TOTAL
DAYLIGHT	144	165	188	179	182	858	84.70%
DARK	26	30	38	34	27	155	15.30%
TOTAL	170	195	226	213	209	1013	100.00%

MAINE HIGHWAY BICYCLE CRASHES BY WEATHER CONDITIONS 2009 - 2013



WEATHER CONDITIONS	2009	2010	2011	2012	2013	FIVE YEAR TOTAL
BLOWING SAND, SOIL, DIRT	0	0	0	0	0	0
SEVERE CROSS WINDS	0	0	0	0	0	0
SLEET,HAIL (freezing rain or drizzle)	0	0	1	1	0	2
OTHER	0	0	0	0	0	0
FOG,SMOG,SMOKE	1	3	1	3	1	9
SNOW	1	1	0	0	1	3
BLOWING SNOW	0	0	0	0	0	0
RAIN	16	8	14	12	9	59
CLOUDY	21	24	35	25	27	132
CLEAR	131	159	175	172	171	808
TOTAL	170	195	226	213	209	1013

MAINE HIGHWAY BICYCLE CRASHES BY ROAD SURFACE CONDITIONS 2009 - 2013



ROAD SURFACE CONDITIONS	2009	2010	2011	2012	2013	FIVE YEAR TOTAL
UNKNOWN	0	0	0	0	1	1
OTHER	0	0	0	0	0	0
OIL	0	0	0	0	0	0
MUD,DIRT	0	0	0	0	1	1
SAND	0	0	0	0	1	1
WATER (standing, moving)	0	0	0	0	1	1
ICE/FROST	0	0	2	2	0	4
SLUSH	0	0	0	1	0	1
SNOW	0	2	0	0	1	3
WET	20	14	26	17	16	93
DRY	150	179	198	193	188	908
TOTAL	170	195	226	213	209	1013

*09-10, figures that were previously WINTRY (old categories) were moved to SNOW (new categories)