

Population and Dwelling Profile

Mount Isa City Council

Updated April 2012

Estimated resident population

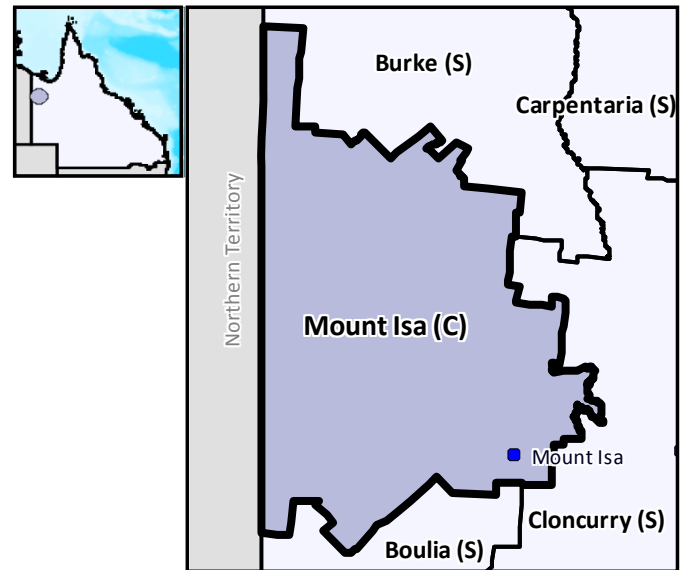
The preliminary estimated resident population of Mount Isa City Council at 30 June 2011 was 22,091 persons, an increase of 138 persons or 0.6 per cent over the year. This compares with an increase of 116 persons or 0.5 per cent in the year to June 2010 (Table 1 and Figure 1).

Components of population change

In the year to June 2009, natural increase (births minus deaths) accounted for an increase of 418 persons while assumed net migration resulted in a loss of 574 persons (Table 1 and Figure 2).

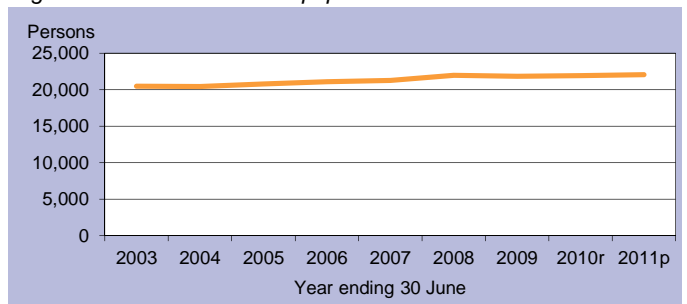
Population projections

Projections released in 2011 indicate that by 2016 the expected population of Mount Isa City Council will be between 22,873 and 24,292 persons (Table 2 and Figure 3). By 2031 this is expected to change to between 24,067 and 29,142 persons (low and high series).



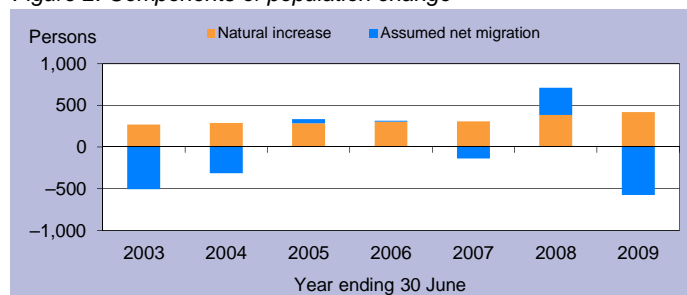
C = City S = Shire R = Regional Council T = Town

Figure 1: Estimated resident population



p = preliminary r = revised

Figure 2: Components of population change



p = preliminary r = revised

Figure 3: Population projections

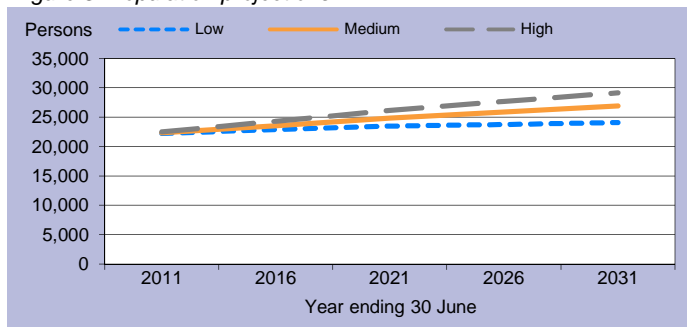


Table 1: Estimated resident population and components of change

Population trends		Annual population change				
As at 30 Jun	Est. resident population	Year to 30 Jun	Natural increase	Assumed net migration	Annual change	
					Total	Per cent
2003	20,489	2,003	271	-507	-236	-1.1
2004	20,461	2004	288	-316	-28	-0.1
2005	20,797	2005	286	50	336	1.6
2006	21,114	2006	305	12	317	1.5
2007	21,283	2007	308	-139	169	0.8
2008	21,993	2008	385	325	710	3.3
2009	21,837	2009	418	-574	-156	-0.7
2010r	21,953	2010r	n.y.a.	n.y.a.	116	0.5
2011p	22,091	2011p	n.y.a.	n.y.a.	138	0.6

p = preliminary r = revised n.y.a. = not available

Table 2: Population projections

	Projected population			Average annual change (medium series)	
	Low series	Medium series	High series	Number	Per cent
2011	22,228	22,338	22,523	245	1.1
2016	22,873	23,544	24,292	241	1.1
2021	23,490	24,858	26,180	263	1.1
2026	23,764	25,865	27,656	201	0.8
2031	24,067	26,927	29,142	212	0.8

Table 3: Population by age group, Mount Isa (C)

	Age group					Median age
	0-14	15-24	25-44	45-64	65+	
2006	5,493	3,209	7,000	4,244	1,168	29.8
	26.0%	15.2%	33.2%	20.1%	5.5%	
2031*	5,547	3,968	8,598	5,930	2,887	33.5
	20.6%	14.7%	31.9%	22.0%	10.7%	

* Medium series

Age structure

The median age of Mount Isa City Council's population is projected to increase by 3.7 years from a median age of 29.8 years in 2006 to a median age of 33.5 years in 2031 (Table 3 and Figure 4). The median age of Queensland in 2031 is projected to be 40.2 years, under the medium series (Table 4).

Dwelling approvals

There were 41 new dwelling approvals in Mount Isa City Council over the year ending December 2011, a decrease of 48.1 per cent from the previous year (79) (Table 5). Separate houses made up 48.8 per cent of all new dwelling approvals over the year ending December 2011 (Figure 5).

Table 5: New dwelling approvals*

Year ending	New dwelling approvals		
	Houses	Other	Total
December			
2005	23	0	23
2006	16	36	52
2007	28	28	56
2008	28	23	51
2009	16	15	31
2010	23	56	79
2011	20	21	41
Mar qtr 2011	5	6	11
Jun qtr 2011	6	14	20
Sep qtr 2011	5	0	5
Dec qtr 2011	4	1	5

* Excludes alterations/additions

Figure 5: Dwelling approvals

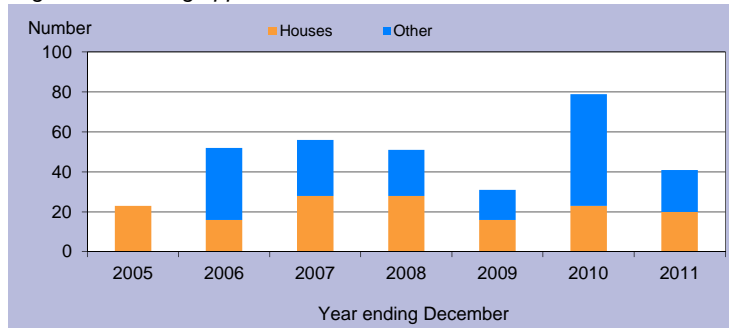
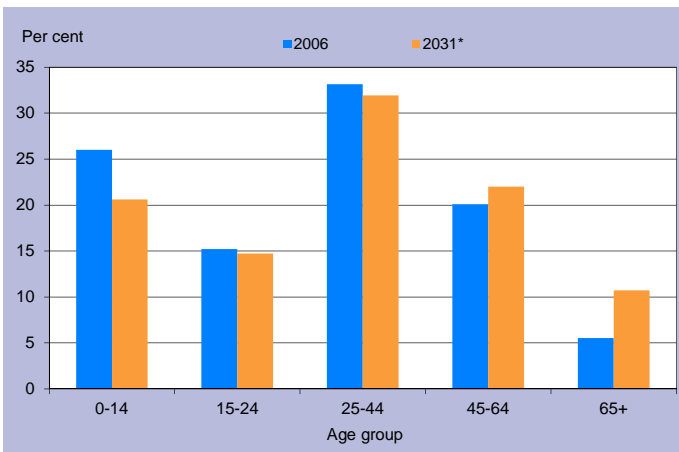


Table 4: Population by age group, Queensland

	Age group					Median age
	0-14	15-24	25-44	45-64	65+	
2006	834,682	578,600	1,169,244	1,013,986	494,396	36.1
	20.4%	14.1%	28.6%	24.8%	12.1%	
2031*	1,205,836	814,688	1,703,235	1,578,741	1,290,350	40.2
	18.3%	12.4%	25.8%	23.9%	19.6%	

* Medium series

Figure 4: Age distribution, Mount Isa (C), 2006 and 2031*



* Medium series

Household size

In 2006, the average household size for all occupied private dwellings in Mount Isa City Council was 2.7 persons. This compares with an average household size of 2.6 for all of Queensland in the same year (Table 6).

Table 6: Average household size by dwelling type

Dwelling type	Average household size			
	Mount Isa (C)			Qld
	1996	2001	2006	2006
Separate house	3.2	3.0	3.0	2.8
Semi-detached, flats, etc	1.8	1.8	2.1	1.8
Other dwellings inc caravans	2.2	1.8	1.9	1.8
All occupied private dwellings	2.8	2.7	2.7	2.6

Sources for the Population and Dwelling Profile:

ABS cat nos 3201.3, 3218.0, 3235.3, 8731.0 (preliminary as at December 2011); ABS unpublished births and deaths data, Census of Population and Housing, 1996, 2001 and 2006; Queensland Government Population Projections, 2011.

You are free to copy, communicate and adapt the work, as long as you attribute the authors. This document is licensed under a Creative Commons Attribution 2.5 Australia licence. To view a copy of this licence, visit <http://creativecommons.org/licenses/by/2.5/au>. To attribute this work, cite Population and Dwelling Profile, Mount Isa City Council, Office of Economic and Statistical Research, Queensland Treasury and Trade.

This profile is based on information available to the Office of Economic and Statistical Research at the time of preparation. It does not necessarily reflect the opinions or views of Queensland Treasury and Trade or the Queensland Government. Any statement, opinion or advice expressed or implied in this report is made in good faith but on the basis that the State of Queensland, and its agents and employees are not liable for any damage or loss whatsoever which may occur in relation to its use by the client or any third party.