

## &gt; Education

## Secondary school population in academic year 2004/2005

	Secondary schools		Grammar/High schools		Vocational schools		TOTAL	
	State	Private	State	Private	State	Private	State	Private
Créteil district	191 688	29 167	127 281	17 616	20 353	3 245	339 322	50 028
Paris district	57 918	27 507	61 899	31 109	9 471	3 061	129 288	61 677
Versailles district	244 708	49 399	158 075	28 197	23 947	4 234	426 730	81 830
<b>Paris Île-de-France</b>	<b>494 314</b>	<b>106 073</b>	<b>347 255</b>	<b>76 922</b>	<b>5 3 771</b>	<b>10 540</b>	<b>895 340</b>	<b>193 535</b>
Paris Île-de-France / France	20,0%	16,6%	23,2%	18,7%	12,6%	9,0%	20,4%	16,6%

Source: Ministry of education, research and technology

## Number of students in higher education in academic year 2004-2005

	Universities	IUFM*	Technical sections of secondary schools	Preparatory classes for "Grandes Ecoles"***	Engineering schools (1)	Schools of Business, Commerce and Accounting (2)	Other schools and higher educational institutions	Total
Créteil district	84 163	5 004	11 949	2 795	3 096	1 196	15 312	122 839
Paris district	183 004	5 103	15 561	13 728	10 652	18 356	78 244	323 861
Versailles district	92 582	7 028	12 978	6 804	11 655	9 434	14 270	153 827
<b>Paris Île-de-France</b>	<b>359 749</b>	<b>17 135</b>	<b>40 488</b>	<b>23 327</b>	<b>25 403</b>	<b>28 986</b>	<b>107 826</b>	<b>600 527</b>
Paris Île-de-France / France	25,7%	21,2%	18,1%	32,4%	23,6%	35,0%	35,5%	26,9%

\* IUFM: Instituts universitaires de formation des maîtres (Teacher training colleges)

(1) All engineering schools and training courses (both within and outside the university system)

(2) Business schools, National Polytechnics, technology universities, accounting schools, top teacher training colleges, private universities, legal and administrative schools, higher educational art and culture colleges, paramedical and social work schools, business & engineering schools with their own preparatory classes "For social work schools and private universities, 2003 data; for paramedical schools, provisional data"

\*\*\* "Grandes Ecoles" are elite higher educational institutions whose students are selected by competitive examination

Source: Ministry of education, research and technology - "Repères et références statistiques", 2005 edition

## Paris Île-de-France's international educational institutions (number of institutions)

	Foreign national institutions	Multicultural institutions - Bilingual education	Multicultural institutions - International sections
Paris	4 institutions: Italian (2/4), English (1/4), Spanish (1/4)	6 institutions: English (4/6), German (3/6), Japanese (2/6), Spanish (2/6), Arab (1/6), Italian (1/6), Portuguese (1/6)	2 institutions: English (2/2), German (1/2)
Seine-et-Marne	-	-	3 institutions: English (3/3), German (2/3)
Yvelines	2 institutions: English (1/2), Japanese (1/2)	6 institutions: English (6/6), Dutch (2/6), German (2/6), Italian (2/6), Polish (2/6), Portuguese (2/6), American (1/6), Danish (1/6), Japanese (1/6), Norwegian (1/6), Spanish (1/6), Swedish (1/6)	3 institutions: English (2/3), German (1/3)
Essonne	-	-	-
Hauts-de-Seine	5 institutions: American (1/5), English (1/5), German (1/5), Japanese (1/5), Spanish (1/5)	-	-
Seine-Saint-Denis	-	-	-
Val-de-Marne	-	1 institution: English (1/1)	1 institution: English (1/1)
Val-d'Oise	-	-	-

**Foreign national institutions**, where the working language and educational system is the one of the native country

**Multicultural institutions, where the educational objective is bilingualism**. Courses are given according to the French educational system in public and private institutions under contract with the French Ministry of Education

**Multicultural institutions, where the educational objective is fluency in the foreign language** and a good knowledge of the culture of the corresponding country. Courses are given according to the French educational system in public and private institutions under contract with the French Ministry of Education

Source: Paris-Ile de France Capital Economique

## > Research

### Paid personnel in public sector research in 2002 and 2003

	Île-de-France	France	Weight of Île-de-France
<b>2002</b>			
Research director	8 071	20 782	38,8%
Researcher	14 500	45 472	31,9%
Research engineers	2 675	6 341	42,2%
Grant holders	6 559	18 532	35,4%
Applied research engineers	12 713	34 289	37,1%
Others	8 685	26 986	32,2%
<b>Total</b>	<b>53 203</b>	<b>152 402</b>	<b>34,9%</b>
<b>2003</b>			
Research director	8 064	20 875	38,6%
Researcher	14 831	45 957	32,3%
Research engineers	2 690	6 361	42,3%
Grant holders	6 660	18 951	35,1%
Applied research engineers	12 763	34 886	36,6%
Others	8 296	25 792	32,2%
<b>Total</b>	<b>53 304</b>	<b>152 822</b>	<b>34,9%</b>

Source: Ministry of education, higher education and research /DEP/ Unit in charge of statistical surveys of research

## Corporate research and development (R&amp;D) potential in 2003

	Number of people in R&D		Researchers		R&D expenditure in Paris Île-de-France	
	Full time equivalent	as %	Full time equivalent	as %	Millions of euros	as %
Agriculture, forestry, fishing, fishfarming	698	0,9	357	0,8	83	0,8
Food and agriculture processing industries	947	1,2	479	1,0	120	1,2
Energy products and energy exploration & production	3 507	4,3	2 356	5,2	527	5,4
Other mining and metals <sup>(1)</sup>	176	0,2	89	0,2	18	0,2
Textiles, clothing, leather and footwear	107	0,1	35	0,1	9	0,1
Wood, paper, cardboard, publishing, printing	132	0,2	69	0,2	12	0,1
Miscellaneous manufacturing industries	s	s	s	s	s	s
Chemicals <sup>(2)</sup>	4 271	5,3	1 528	3,3	557	5,7
Pharmaceuticals <sup>(3)</sup>	10 720	13,2	5 316	11,6	1 548	15,8
Rubber and plastics	348	0,4	161	0,4	39	0,4
Glass and glassware	392	0,5	177	0,4	52	0,5
Building materials	155	0,2	77	0,2	12	0,1
Metallurgy	352	0,4	202	0,4	36	0,4
Plant and machinery <sup>(4)</sup>	3 096	3,8	1 111	2,4	310	3,2
Office automation and IT equipment	1 362	1,7	960	2,1	157	1,6
Electrical machinery and devices	1 848	2,3	947	2,1	184	1,9
Radio, TV and communication equipment <sup>(5)</sup>	9 089	11,2	6 456	14,1	1 136	11,6
Medical, precision and optical instruments	7 051	8,7	5 153	11,3	778	7,9
Automotive industry	19 559	24,1	8 297	18,2	2 181	22,2
Shipbuilding and land transport equipment <sup>(6)</sup>	s	s	s	s	s	s
Aerospace	5 356	6,6	2 934	6,4	839	8,6
Construction and civil engineering	478	0,6	350	0,8	63	0,6
Transport and communication services	3 623	4,5	1 863	4,1	423	4,3
IT / Computer services	5 946	7,3	5 270	11,5	523	5,3
Engineering, technical studies and monitoring/inspection	1 306	1,6	1 075	2,4	107	1,1
<b>Total</b>	<b>81 250</b>	<b>100,0</b>	<b>45 653</b>	<b>100,0</b>	<b>9 807</b>	<b>100,0</b>

s = Statistical secret

Because of rounding off, some totals appear to diverge

(1) Including steel, foundry and initial processing of non-ferrous metals

(2) Including artificial and synthetic fibres

(3) Including the manufacturing of active principles

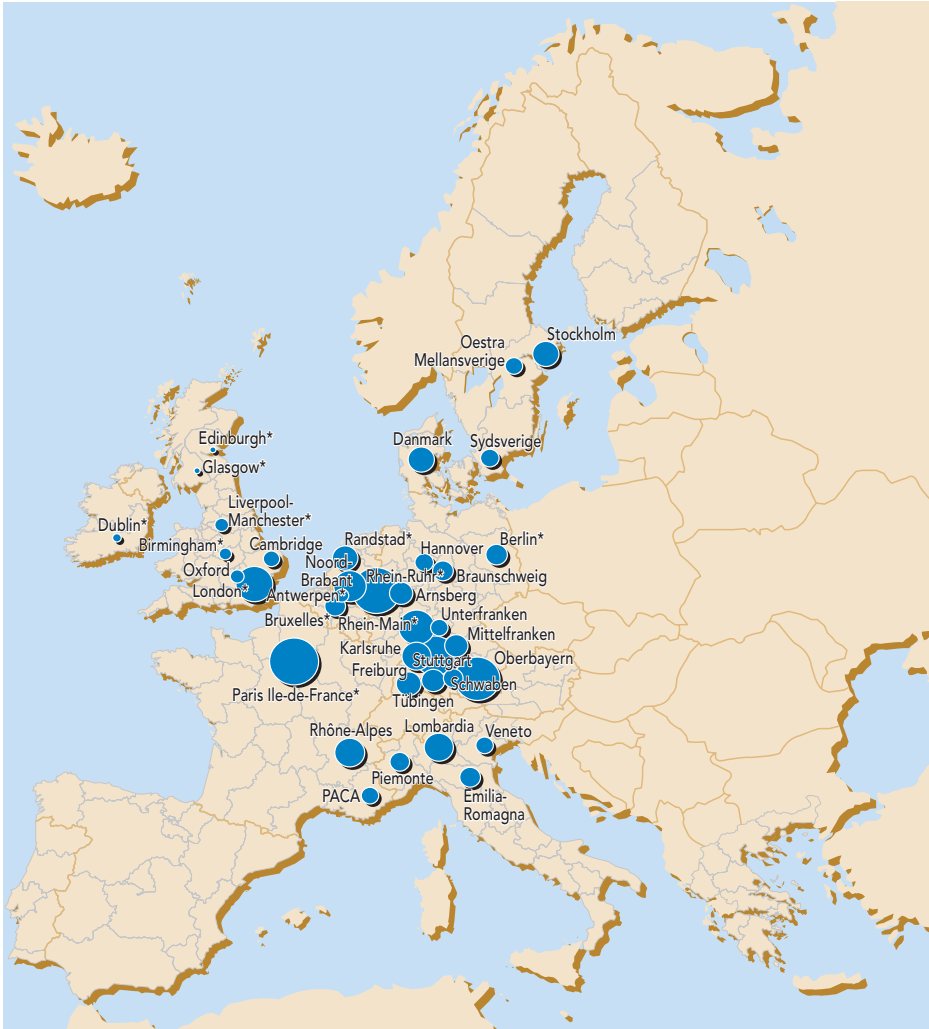
(4) Including the armaments and domestic appliance industries

(5) Including electronic components

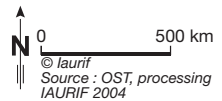
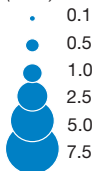
(6) Excluding the automotive sector

Source: Ministry of education, higher education and research - DEP B3

## Europe's major technology regions<sup>(1)</sup> in 2001



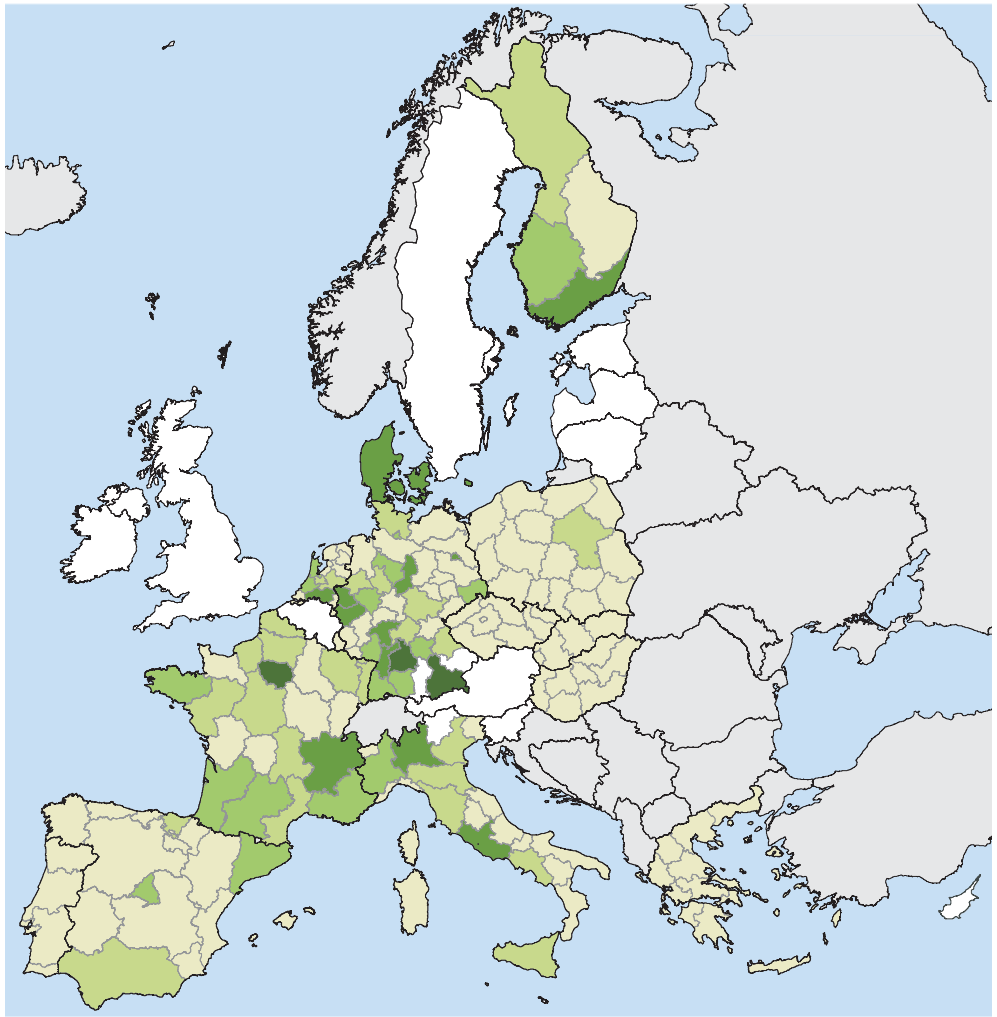
European share of applications for European patents (as %)



\* Functional urban region (as defined by the GEMACA project)

(1) The top 30 technology regions

European research and development expenditure by region in 2001



R&D expenditure (in millions of euros)

- 1 - 500
- 501 - 1,000
- 1,001 - 2,000
- 2,001 - 5,000
- over 5,000
- non-EU countries
- data not available

0 500 km  
 Source : Eurostat 2005  
 © IAURIF / DEDL