

**University of the  
Fraser Valley  
Factbook  
2011-12**



**UFV**

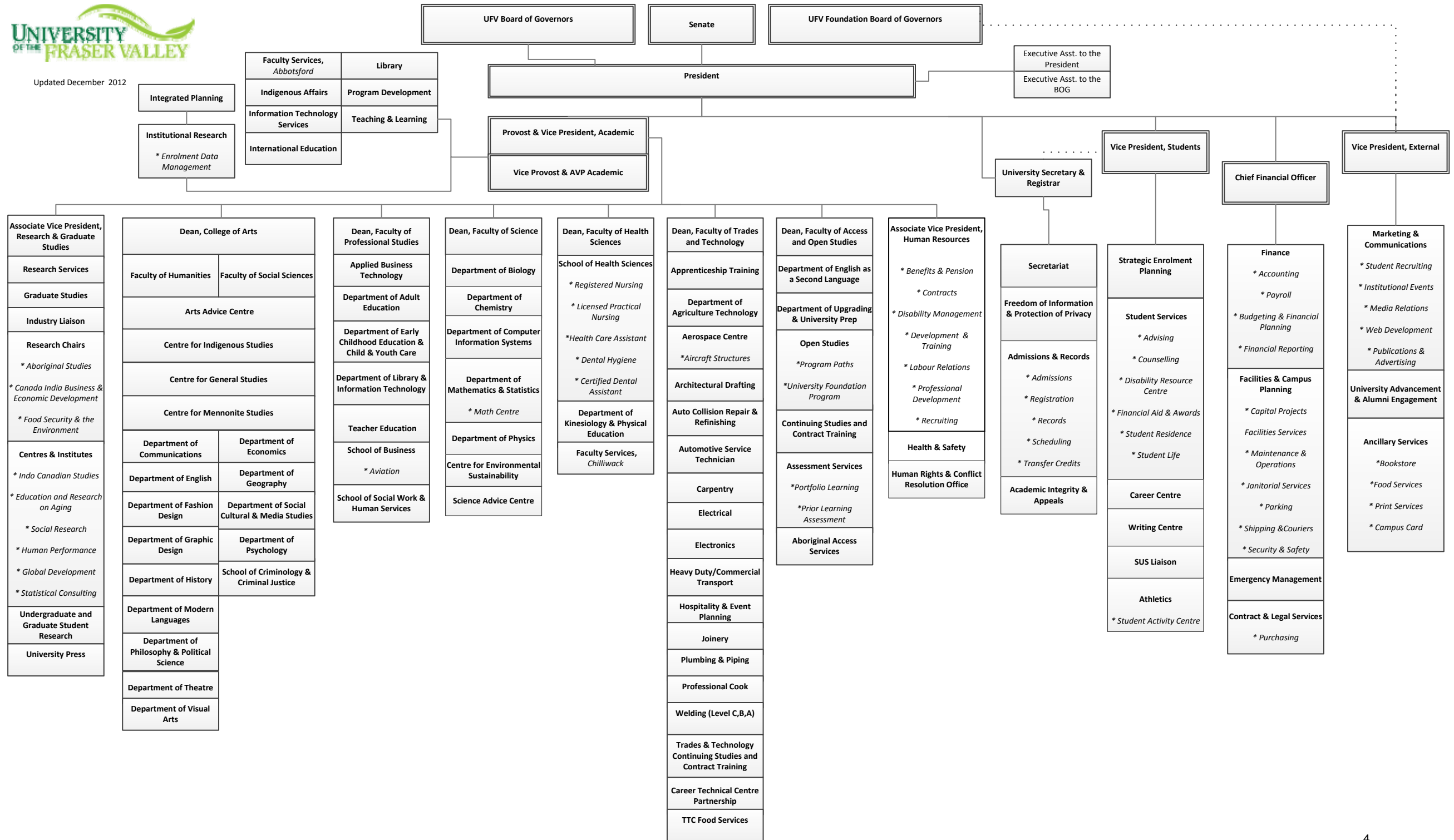
# **Table of Contents**

<b>Organization Chart</b>	4
<b>Terms</b>	5
<b>1. Student Headcount</b>	6
Unduplicated headcount	6
Headcount by credential type	6
Headcount by credential type and program	7
<b>2. Course Registrations</b>	12
Registrations by semester	12
Summer registrations by credential type	12
Fall registrations by credential type	12
Winter registrations by credential type	13
Graph: Registrations by credential type	13
<b>3. FTEs</b>	14
Historical FTEs	14
FTEs by campus	14
FTEs by department	15
<b>4. Graduates</b>	16
Graduates by credential	16
Graduates by credential and gender	16
Average age of graduates and credential	16
Graduates by credential and age	17
Graduates by credential type and program	18
<b>5. Demographic Data</b>	21
New and returning students	
Unduplicated new and returning students	21
Unduplicated new and returning students per semester	21
Unduplicated new and returning students per semester by credential type	22
Gender and FT/PT statistics	
Unduplicated headcount by gender and FT/PT	23
FTE by FT/PT and gender	23
Average age by FT/PT and gender	23
Unduplicated headcount by FT/PT, gender, and age category	24
Credential demographics	
Headcount by credential, gender and FT/PT	25
FTEs by credential, FT/PT, and gender	26
Average age by credential, FT/PT, and gender	27
Program path statistics	
Headcount for program path by FT/PT and gender	28
Program path average age by FT/PT and gender	28

Self-declared Aboriginal statistics	
Aboriginal headcount by program credential type	29
Unduplicated Aboriginal headcount by FT/PT and gender	29
Aboriginal average age by FT/PT and gender	30
Aboriginal FTEs by FT/PT and gender	30
Continuing studies statistics	
Continuing studies headcount by FT/PT and gender	30
Continuing studies average age by FT/PT and gender	30
Location statistics	
Top 10 BC cities that UFV students come from	31
UFV student headcount per BC Regional District	32
International student country of origin	33
Course delivery method	
Academic registrations by online and in class	35
Department statistics	
Average academic grades awarded by department	36
Employee demographics	
Employee demographics	37
<b>6. Financial Data</b>	<b>38</b>
<b>7. Library Services</b>	<b>39</b>
<b>8. Faculty, Staff and Research</b>	<b>40</b>
<b>9. Student Services</b>	<b>41</b>

The UFV Factbook is produced by The Office of Institutional Research.

If you have questions or comments about the Factbook, please contact  
Max Nevill, Analyst, Institutional Research, [max.nevill@ufv.ca](mailto:max.nevill@ufv.ca) or  
Vladimir Dvoracek, Director of Institutional Research, [vlad.dvoracek@ufv.ca](mailto:vlad.dvoracek@ufv.ca)



## **Terms**

**Aboriginal Student:** UFV does not require students to declare their aboriginal status, students elect to self declare as aboriginal on their application form

**Academic Year:** Sept 1 to August 31 of the following year

**Age:** As of July 1 of the Fiscal Year

**Credential “None”:** A program that does not grant a UFV credential upon completion

**Continuing Studies (CS):** Non-academic and Non-Trades programs or courses

**Domestic/International:** This is based on the type of fees a student pays in the given fiscal year. If a student pays international fees for part of a given fiscal period, they are counted as international

**Fiscal year:** Unless otherwise stated, all data is for fiscal year, which is April 1 to March 31 of the following year

**FTE:** Full Time Equivalent student

**Full Time/Part Time (FT/PT):** A student is full time if the student counts for at least 0.6 of an FTE, otherwise they are part time

**Graduate:** A student who graduates from a program. A student may be granted multiple credentials in a given academic year

**Location:** Based on current mailing address

**New Students:** No previous UFV course registration activity

**Registration:** A single student enrolment in a Credit level or Trades Course

**Unduplicated headcount:** Each student is counted only once; a student is not counted as a member of multiple groups

# Section 1: Student Headcount

## Unduplicated Headcount

	2006-07	2007-08	2008-09	2009-10	2010-11	2011-12
<b>Student Type</b>						
Domestic	12673	12581	13348	14392	14550	14200
International	567	689	787	845	975	976
<b>Total</b>	<b>13240</b>	<b>13270</b>	<b>14135</b>	<b>15237</b>	<b>15525</b>	<b>15176</b>

## Headcount by Credential Type

	2006-07	2007-08	2008-09	2009-10	2010-11	2011-12
<b>Credential</b>						
Bachelor Degree	2621	2936	3545	4013	4763	5152
Diploma	6462	5983	5937	6329	5908	5534
Developmental	559	633	961	1579	1633	1433
Certificate	1429	1201	1290	1306	1351	1275
Apprenticeship	263	279	302	318	279	270
Masters Degree	36	41	51	55	82	59
None	3033	3137	2969	2766	2652	2476
<b>Total</b>	<b>14403</b>	<b>14210</b>	<b>15055</b>	<b>16366</b>	<b>16668</b>	<b>16199</b>

## Headcount by Credential Type and Program

2006-07   2007-08   2008-09   2009-10   2010-11   2011-12

Credential	Program	2006-07	2007-08	2008-09	2009-10	2010-11	2011-12	
Bachelor Degree	Bach of Sci in Nurs Fast-track	.	.	.	.	26	42	
	Bach of Sci in Nurs LPN Access	4	6	10	8	13	13	
	Bachelor of Arts	952	1088	1405	1500	1703	1738	
	Bachelor of Arts (Child & Youth Care)	159	135	124	114	106	89	
	Bachelor of Arts (Criminal Justice)	157	155	171	329	408	479	
	Bachelor of Arts in Adult Education	74	67	70	72	68	83	
	Bachelor of Business Administration	159	204	211	239	580	699	
	Bachelor of Business Administration in Aviation	72	55	57	56	53	44	
	Bachelor of Computer Information Systems	98	138	217	230	241	249	
	Bachelor of Fine Arts	.	13	43	74	81	89	
	Bachelor of General Studies	165	186	194	188	179	217	
	Bachelor of Kinesiology	203	206	253	306	337	318	
	Bachelor of Science	242	333	430	504	564	690	
	Bachelor of Science in Nursing	231	248	255	279	285	298	
	Bachelor of Science in Nursing (RNA Access)	6	1	.	.	.	.	
	Bachelor of Social Work	99	101	105	114	119	104	
	Diploma	Aboriginal Culture & Language Support Diploma	7	4	6	5	4	3
		Aboriginal Foundations	3	1	10	2	1	1
		Adult Education Studies	.	10	24	12	6	8
		Arts Studies	64	978	899	1019	922	908
Associate of Arts Degree		208	199	164	136	120	133	
Associate of Arts Degree: Theatre		3	2	6	3	1	9	
Associate of Science Degree		77	40	16	7	1	1	
Business Admin Studies		43	270	375	468	515	464	
Child and Youth Care Studies		5	52	78	88	89	129	
Computer Info Systems Studies		6	29	81	83	101	106	
Criminal Justice Studies		17	87	125	205	278	338	
Dental Hygiene Diploma		16	32	48	48	47	29	
Diploma in Academic Studies		.	.	.	.	1	.	
Diploma in Agriculture Technology		34	35	36	36	32	52	
Diploma in Aviation		26	21	20	26	27	23	
Diploma in Business Administration		480	580	677	756	609	461	
Diploma in Computer Information Systems		172	144	91	77	60	57	
Diploma in Criminal Justice		292	296	291	189	76	40	
Diploma in Early Childhood Education		31	24	21	20	6	33	
Diploma in Fashion Design		53	47	59	54	63	47	



## Headcount by Credential Type and Program

2006-07   2007-08   2008-09   2009-10   2010-11   2011-12

Credential	Program	2006-07	2007-08	2008-09	2009-10	2010-11	2011-12
Diploma	Diploma in Fitness & Exercise Management	1	.	.	.	.	.
	Diploma in General Studies	2832	1788	1475	1366	1100	964
	Diploma in Liberal Arts	.	.	1	.	.	.
	Diploma in Library & Information Technology	110	108	122	130	149	159
	Diploma in Social Services	150	136	145	155	171	166
	Diploma in Substance Abuse Counselling	13	9	13	6	4	3
	Diploma in Theatre Arts	34	26	31	32	38	35
	Diploma in Visual Arts	61	64	66	60	61	58
	General Arts	878	21	3	2	.	.
	General Science	430	26	7	1	.	.
	Graduated and classified as General Studies	169	172	110	144	123	85
	Kinesiology Studies	25	83	103	180	229	236
	Library Info Tech Studies	.	17	13	18	23	8
	Nursing Studies	16	110	169	226	232	234
	Paralegal diploma	.	.	.	.	.	1
	Science Studies	19	430	445	512	549	485
	Social Services Studies	15	113	141	173	197	201
	Studying for General Interest	.	27	65	90	73	57
	Two Year Arts: Associate of Arts or Diploma in Liberal Studies	172	2	1	.	.	.
	Developmental	Adult Basic Education	.	.	299	812	882
Cert:Eng Second Lang Academic		1	.	.	.	.	.
Certificate in English as a Second Language		450	537	576	612	548	444
University Foundation Cert		76	62	52	121	167	124
Workplace TASK Certificate		32	34	34	34	36	36
Certificate	Aircraft Structural Repair Technician	71	40	43	51	48	52
	Aircraft Structures Technician	.	.	6	5	1	.
	Architectural Drafting Certificate	57	40	36	43	50	49
	Architectural Drafting Tech Cr	.	6	4	1	2	1
	Auto Collision Repair/Refinish	.	.	.	18	34	35
	Auto Service Technician Cert	78	62	61	51	60	54
	Berry Production Essentials Cr	.	.	.	1	1	2
	CISC Networking & Net Sec Cert	.	.	1	.	.	.
	Carpentry Certificate	70	43	42	36	34	30
	Cert in Applied Business Tech	.	6	17	8	5	6
	Certificate in Accounting	18	24	23	26	21	10
	Certificate in Adventure Tourism	8	2	1	.	.	.



## Headcount by Credential Type and Program

		2006-07	2007-08	2008-09	2009-10	2010-11	2011-12
Credential	Program						
Certificate	Certificate in Applied Business Technology	127	98	83	88	96	79
	Certificate in Architectural & Civil Drafting	1	.	.	.	.	.
	Certificate in Business Administration	9	15	9	12	7	8
	Certificate in Computer Information Systems	37	29	20	16	11	17
	Certificate in Early Childhood Education	115	94	84	123	114	94
	Certificate in Electricity	72	39	42	41	40	41
	Certificate in Electronics Core	6	.	.	.	.	.
	Certificate in Extended Studies in Arts	8	4	9	6	2	5
	Certificate in Extended Studies in Child and Youth Care	1	.	1	1	2	2
	Certificate in Extended Studies in Early Childhood Education	.	2	1	2	1	.
	Certificate in Extended Studies in Fashion Design	.	.	1	.	2	1
	Certificate in Extended Studies in Social Services	.	.	.	.	1	.
	Certificate in Fitness & Exercise Management	7	.	.	.	.	.
	Certificate in Horticulture Crop Production	18	14	12	4	.	.
	Certificate in Livestock Production	15	21	16	20	19	18
	Certificate in Marketing	26	28	34	28	13	11
	Certificate in Media Literacy	.	.	.	1	2	4
	Certificate in Ornamental Horticulture Production	6	.	.	.	.	.
	Certificate in Substance Abuse Counselling	27	18	10	12	5	1
	Certified Dental Assistant Certificate	51	49	48	48	52	50
	Community Pharmacy Technician Cert -404 hrs	30	14	.	.	.	.
	Community Support Worker Certificate	38	26	26	24	30	28
	Cook Training Certificate	19	23	25	25	26	31
	Dental Assisting Certificate	1	.	.	.	.	.
	Dental Receptionist Certificate - 303 hrs	1	16	13	9	14	13
	Electrical Work Certificate	.	12	29	25	16	10
	Electronics Tech Common Core Cert	16	26	19	26	38	38
	Family Childcare Certificate	17	.	1	1	.	.
	Field Vegetable Prod Essential	.	.	.	1	1	.
	Floral Design Certificate	9	6	.	.	.	.
	Health Care Assistant Cert	.	.	.	47	49	54
	Health and Human Services Career Certificate	43	48	47	42	47	45
	Heavy Duty /Commercial Transport Tech Certificate	36	18	36	35	37	39
	Home Support and Resident Care Attendant Certificate	59	66	49	3	4	1
	Hort Crop Prod & Protection Cr	.	.	6	8	20	23
	Hospitality Event Planning Cr	.	20	36	41	41	38

## Headcount by Credential Type and Program

		2006-07	2007-08	2008-09	2009-10	2010-11	2011-12
Credential	Program						
Certificate	Indigenous Arts Certificate	.	.	15	2	3	.
	Indigenous Studies	.	.	.	2	3	.
	Integrated Pest Management Certificate	8	7	3	2	.	.
	Joinery Certificate	10	8	10	15	18	17
	Legal Administrative Assistant Cert	23	22	15	17	37	32
	Library Technician Post-diploma Certificate	.	.	.	.	.	28
	Literacy Tutoring Certificate	6	2	8	4	2	.
	Medical Office Assistant Certificate	20	1	.	.	.	.
	Milker Technician Certificate	.	.	.	.	1	5
	Nursing Unit Clerk Certificate	69	88	127	116	104	68
	Plumbing & Piping cert	.	.	.	21	38	34
	Practical Nursing	50	52	54	44	48	55
	Teaching Eng as a Foreign Lang	.	.	.	.	.	1
	Teaching Eng as a Second Lang	25	15	21	26	25	21
	Tutor Training	.	1	.	1	2	.
	Welding C/Welder Fitting Cert	.	58	106	89	89	90
	Welding Level A Certificate	2	.	8	8	13	11
	Welding Level B Certificate	16	6	29	30	22	23
	Welding Level C Certificate	103	32	3	.	.	.
	Apprenticeship	Automotive Apprenticeship	76	77	83	83	67
Carpentry Apprenticeship		80	85	88	108	89	72
Electricity Apprenticeship		107	117	131	127	123	128
Masters Degree	Master of Social Work	.	.	.	.	21	20
	Masters of Arts (Crim Justice)	36	41	51	55	61	39
None	Ashland Study Tour	.	1	.	1	.	1
	Aviation Training for Trinity Western University	.	.	.	.	.	1
	CIS Concurrent Studies	3	.	.	.	.	.
	Carpentry Upgrading	1	.	.	.	.	.
	College and Career Preparation	788	736	506	180	58	3
	Concurrent with High School in General Studies	1	1	1	14	13	8
	Continuing Education	2165	2263	2294	2261	2234	2143
	Electrical Upgrading	.	.	1	.	.	.
	Engineering Transfer	30	26	23	22	29	28
	Heavy Duty/Commercial Transport Upgrading	.	.	.	1	.	.
	NITEP Transfer	.	.	7	9	9	6
	Registration in UCFV Assessment Testing	18	23	23	15	8	8

## Headcount by Credential Type and Program

		2006-07	2007-08	2008-09	2009-10	2010-11	2011-12
Credential	Program						
None	Teacher Education Program	.	32	35	76	79	72
	Transitions	.	.	.	43	34	32
	UFV Activity	.	.	.	52	86	68
	Visiting (Graduate level)	.	.	.	.	.	1
	Visiting Student in General Studies	26	47	63	70	59	53
	Visiting Student on Exchange	.	.	3	16	42	46
	Visiting/Exchange	.	.	.	.	.	6
	Welding Upgrading	1	8	13	6	1	.
<b>Total</b>		<b>14403</b>	<b>14210</b>	<b>15055</b>	<b>16366</b>	<b>16668</b>	<b>16199</b>

## Section 2: Course Registrations

### Registrations by Semester

	2006-07	2007-08	2008-09	2009-10	2010-11	2011-12
<b>Semester</b>						
Summer	8194	6714	6880	7478	8719	9068
Fall	27022	25855	28803	31064	32288	32535
Winter	24444	26696	28182	30171	30600	31309
<b>Total</b>	<b>59660</b>	<b>59265</b>	<b>63865</b>	<b>68713</b>	<b>71607</b>	<b>72912</b>

### Summer Registrations by Credential Type

	2006-07	2007-08	2008-09	2009-10	2010-11	2011-12
<b>Credential</b>						
Apprenticeship	89	59	93	75	48	46
Bachelor Degree	1745	1780	1943	2250	2519	3170
Certificate	2126	699	596	419	1428	1791
Developmental	493	504	664	748	887	551
Diploma	3492	3112	3075	3416	3304	3040
Masters Degree	45	50	43	30	41	48
None	204	510	466	540	492	422
<b>Total</b>	<b>8194</b>	<b>6714</b>	<b>6880</b>	<b>7478</b>	<b>8719</b>	<b>9068</b>

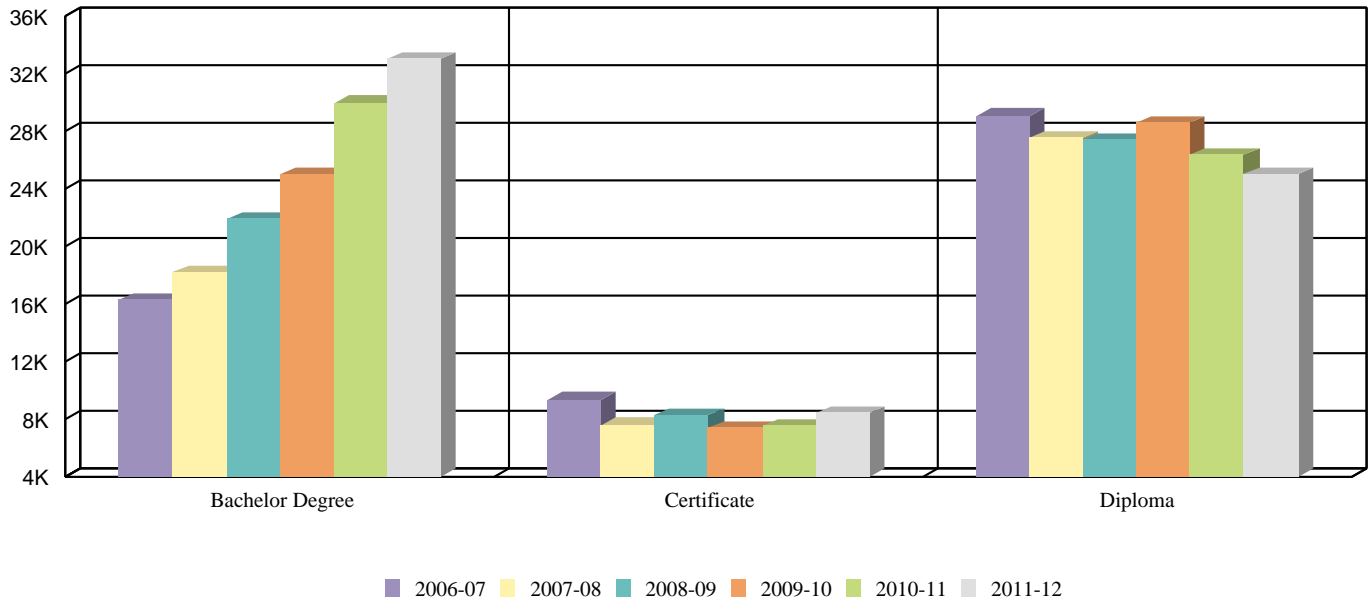
### Fall Registrations by Credential Type

	2006-07	2007-08	2008-09	2009-10	2010-11	2011-12
<b>Credential</b>						
Apprenticeship	91	99	111	107	105	92
Bachelor Degree	7341	8170	10200	11671	13779	15112
Certificate	3709	2158	3216	3012	3015	2937
Developmental	1079	1189	1370	2240	2494	2095
Diploma	13774	13080	12715	13134	12079	11563
Masters Degree	72	59	54	47	53	84
None	956	1100	1137	853	763	652
<b>Total</b>	<b>27022</b>	<b>25855</b>	<b>28803</b>	<b>31064</b>	<b>32288</b>	<b>32535</b>

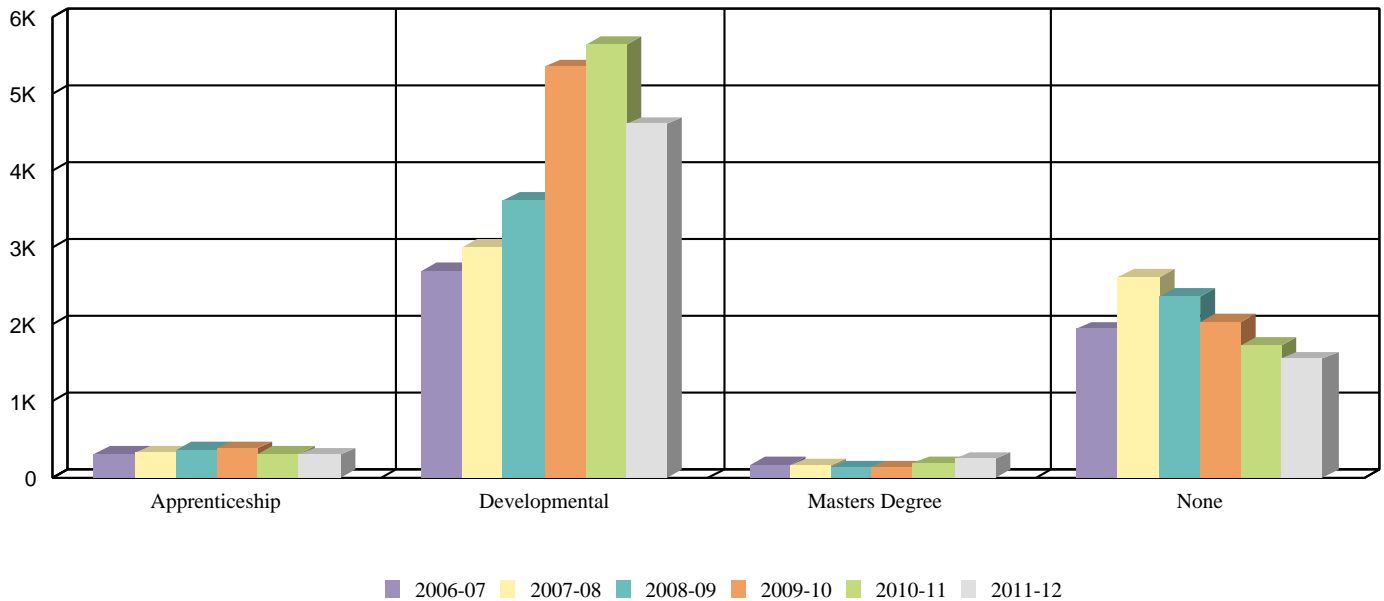
## Winter Registrations by Credential Type

	2006-07	2007-08	2008-09	2009-10	2010-11	2011-12
<b>Credential</b>						
Apprenticeship	122	158	160	192	149	155
Bachelor Degree	7084	8188	9723	11064	13646	14652
Certificate	3510	4702	4387	3863	3068	3649
Developmental	1123	1309	1580	2358	2256	1944
Diploma	11789	11300	11538	12010	10924	10333
Masters Degree	53	41	34	47	87	103
None	763	998	760	637	470	473
<b>Total</b>	<b>24444</b>	<b>26696</b>	<b>28182</b>	<b>30171</b>	<b>30600</b>	<b>31309</b>

### Registrations by Credential Type



### Registrations by Credential Type



## Section 3: Full Time Equivalent Students (FTEs)

### Historical FTEs

Note: Historical FTEs do not include ITA Funded FTEs nor International FTEs.

Year	Funded FTEs	Actual FTEs	Difference	Utilization
1990-91	2099	2254	155	107%
1991-92	2336	2373	37	102%
1992-93	2565	2700	135	105%
1993-94	2792	3015	223	108%
1994-95	3329	3294	-35	99%
1995-96	3534	3468	-66	98%
1996-97	3795	3634	-161	96%
1997-98	3691	3962	271	107%
1998-99	3962	4330	368	109%
1999-00	4134	4926	792	119%
2000-01	4592	4981	389	108%
2001-02	5025	5234	209	104%
2002-03	5282	5518	236	104%
2003-04	5455	5471	16	100%
2004-05	5542	5680	138	102%
2005-06	5205	5667	462	109%
2006-07	5610	5785	175	103%
2007-08	5961	5729	-232	96%
2008-09	6251	6174	-77	99%
2009-10	6608	6688	80	101%
2010-11	6645	6926	281	104%
2011-12	6677	7014	337	105%

### FTEs by Campus

	2006-07	2007-08	2008-09	2009-10	2010-11	2011-12
<b>Campus</b>						
Abbotsford	4,887	4,553	4,757	5,178	5,424	5,308
Aerospace Training Centre	54	27	37	32	29	33
Canada Education Park	.	400	671	617	599	648
Chilliwack	896	974	969	1,018	1,022	1,090
Clearbrook Centre	.	.	.	.	.	56
Hope	25	20	19	18	24	21
Marshall Road	155	180	158	140	186	134
Mission	175	165	192	185	184	180
Off site, in country activity	258	197	195	187	219	192
Online	308	267	336	464	463	486
Out of country activity	17	36	59	63	62	82
<b>Total</b>	<b>6,775</b>	<b>6,820</b>	<b>7,394</b>	<b>7,903</b>	<b>8,212</b>	<b>8,231</b>

## FTEs by Department

	2006-07	2007-08	2008-09	2009-10	2010-11	2011-12
Department	FTE	FTE	FTE	FTE	FTE	FTE
Aboriginal Services	1	5	7	4	2	.
Adult Education	27	26	28	29	33	44
Agricultural Technology	42	30	35	32	48	55
Applied Business Technology	65	64	59	62	73	67
Aviation	31	24	21	25	20	20
Biology	190	196	230	266	269	280
Business Administration	477	484	533	601	651	732
Chemistry	130	135	164	164	174	171
Communications	166	169	214	233	249	257
Computer Information Systems	265	246	275	285	314	312
Continuing Studies	203	202	236	213	238	221
Cooperative Education	19	25	23	13	18	16
Criminal Justice	383	348	377	428	434	426
Dean, Arts	2	13	3	1	2	3
Dean, Science and Technology	.	.	.	5	12	9
Early Childhood and Youth Care	156	150	138	143	138	135
Economics	94	96	106	107	127	130
Education	38	95	101	123	85	95
English	384	405	452	512	532	543
English As a Second Language	327	385	388	428	429	295
Fashion Design	40	38	44	41	42	35
Geography	197	203	214	234	262	251
Graphic Design	3	6	4	7	13	9
Health Science	295	351	347	362	391	406
History	287	280	243	245	240	251
Humanities	2	7	6	1	7	3
International Education	0	10	18	4	7	8
Kinesiology and Physical Educ.	317	296	297	339	350	354
Library and Information Tech	46	49	44	50	58	69
Mathematics	280	278	322	346	386	387
Modern Languages	112	105	105	121	124	135
Other	0	0	0	0	1	1
Philosophy/Political Science	179	181	192	216	223	239
Physics	81	90	105	112	124	125
Psychology	294	302	336	402	391	393
Social Cultural & Media Studie	260	250	272	302	320	322
Social Work and Human Services	201	192	203	214	237	226
Theatre	55	49	49	60	59	62
Trades	599	601	723	660	628	663
Upgrading & University Prep	376	280	308	331	317	302
Visual Arts	151	155	174	180	187	183
<b>Total</b>	<b>6,775</b>	<b>6,820</b>	<b>7,394</b>	<b>7,903</b>	<b>8,212</b>	<b>8,231</b>



## Section 4: Graduates

### Graduates by Credential

Credential	Academic Year					
	2006-07	2007-08	2008-09	2009-10	2010-11	2011-12
Bachelor Degree	640	668	668	654	740	751
Certificate	605	661	740	690	864	860
Developmental	91	89	78	68	51	35
Diploma	414	407	414	341	343	404
Masters Degree	2	3	6	5	35	18
<b>Total</b>	<b>1752</b>	<b>1828</b>	<b>1906</b>	<b>1758</b>	<b>2033</b>	<b>2068</b>

### Graduates by Credential and Gender

Credential	Gender	Academic Year					
		2006-07	2007-08	2008-09	2009-10	2010-11	2011-12
Bachelor Degree	F	422	466	477	449	523	505
	M	218	202	191	205	217	246
Certificate	F	367	422	437	374	549	539
	M	238	239	303	316	315	321
Developmental	F	46	63	54	36	23	21
	M	45	26	24	32	28	14
Diploma	F	296	290	294	237	226	266
	M	118	117	120	104	117	138
Masters Degree	F	2	3	4	3	20	9
	M	.	.	2	2	15	9
<b>Total</b>		<b>1752</b>	<b>1828</b>	<b>1906</b>	<b>1758</b>	<b>2033</b>	<b>2068</b>

### Average Age of Graduates and Credential

Credential	Academic Year					
	2006-07	2007-08	2008-09	2009-10	2010-11	2011-12
Bachelor Degree	28.2	27.7	27.4	27.6	26.9	27.1
Certificate	27.7	26.5	27.6	25.8	26.8	26.8
Developmental	23.2	23.4	23.7	24.4	23.8	28.6
Diploma	26.3	26.7	25.6	25.8	25.9	26.0
Masters Degree	27.5	30.8	36.1	48.5	37.9	39.6

## Graduates by Credential and Age

		Academic Year					
		2006-07	2007-08	2008-09	2009-10	2010-11	2011-12
Credential	Age						
Bachelor Degree	18 to 24	363	380	392	383	466	466
	25 to 29	129	141	136	146	136	160
	30 to 34	38	40	43	31	34	25
	35 to 39	31	25	20	23	18	20
	40 to 49	44	41	44	34	45	33
	50 to 59	14	12	9	21	8	17
	60+	2	2	.	1	1	1
	Unknown	19	27	24	15	32	29
Certificate	<18	89	114	95	108	77	102
	18 to 24	255	282	339	339	462	421
	25 to 29	79	76	82	85	99	122
	30 to 34	28	42	52	32	49	47
	35 to 39	30	39	45	29	36	38
	40 to 49	65	62	76	60	82	66
	50 to 59	28	20	32	16	33	38
	60+	2	2	.	2	2	2
Unknown	29	24	19	19	24	24	
Developmental	<18	1	.	.	2	.	.
	18 to 24	69	66	60	47	37	14
	25 to 29	9	13	8	9	4	5
	30 to 34	2	1	1	2	5	2
	35 to 39	1	2	3	1	4	2
	40 to 49	3	1	2	4	.	3
	50 to 59	.	1	1	1	.	1
	Unknown	6	5	3	2	1	8
Diploma	18 to 24	274	259	278	232	221	248
	25 to 29	43	56	56	43	57	73
	30 to 34	20	19	15	15	14	17
	35 to 39	15	15	4	14	12	9
	40 to 49	29	27	21	18	16	20
	50 to 59	10	12	8	4	10	8
	60+	.	.	.	.	.	2
	Unknown	23	19	32	15	13	27
Masters Degree	18 to 24	.	.	1	.	.	1
	25 to 29	2	.	.	.	6	3
	30 to 34	.	1	2	.	7	4
	35 to 39	.	.	1	1	8	2
	40 to 49	.	.	2	1	11	5
	50 to 59	.	.	.	2	3	3
Unknown	.	2	.	1	.	.	
<b>Total</b>		<b>1752</b>	<b>1828</b>	<b>1906</b>	<b>1758</b>	<b>2033</b>	<b>2068</b>

## Graduates by Credential Type and Program

Credential	Program	Academic Year						
		2006-07	2007-08	2008-09	2009-10	2010-11	2011-12	
Bachelor Degree	Bachelor of Arts	225	227	236	191	228	258	
	Bachelor of Arts (Child & Youth Care)	48	42	37	30	36	20	
	Bachelor of Arts (Criminal Justice)	54	46	64	63	45	46	
	Bachelor of Arts in Adult Education	12	11	10	11	11	12	
	Bachelor of Business Administration	50	56	79	72	105	129	
	Bachelor of Business Administration in Aviation	18	11	4	4	11	6	
	Bachelor of Computer Information Systems	25	31	25	27	25	15	
	Bachelor of Fine Arts	.	7	6	11	13	8	
	Bachelor of General Studies	36	52	41	62	56	52	
	Bachelor of Kinesiology	67	56	49	52	61	55	
	Bachelor of Science	42	49	39	33	53	57	
	Bachelor of Science in Nursing	30	46	40	59	51	52	
	Bachelor of Science in Nursing (RNA Access)	5	1	.	.	.	.	
	Bachelor of Social Work	28	33	38	39	45	41	
	Certificate	Aircraft Structural Repair Technician	28	24	16	17	17	26
		Animation Arts Certificate	.	.	.	.	.	5
Architectural Drafting Certificate		21	23	18	22	21	22	
Auto Collision Repair/Refinish		.	.	.	15	17	13	
Auto Service Technician Cert		22	26	25	29	28	18	
Berry Production Essentials Cr		.	.	.	.	.	4	
Bookkeeping for Small Business Certificate		31	42	63	51	74	66	
CISC Networking & Net Sec Cert		.	.	2	.	.	.	
Carpentry Certificate		20	12	16	15	14	15	
Certificate in Accounting		1	5	2	1	8	5	
Certificate in Adventure Tourism		.	1	.	.	.	.	
Certificate in Applied Business Technology		43	46	47	46	59	56	
Certificate in Business Administration		1	5	8	5	8	6	
Certificate in Computer Information Systems		7	14	18	6	11	10	
Certificate in Diaspora Studies		.	.	.	.	.	3	
Certificate in Early Childhood Education		25	38	17	17	54	29	
Certificate in Electricity		16	35	29	36	25	28	
Certificate in Extended Studies in Arts		2	2	5	2	3	.	
Certificate in Extended Studies in Child and You!		1	.	.	.	.	2	
Certificate in Extended Studies in Early Childho!		3	1	4	2	2	2	
Certificate in Extended Studies in Fashion Design		1	.	1	.	.	1	
Certificate in Extended Studies in Social Services		6	1	1	1	.	2	
Certificate in Extended Studies in Social Work		.	.	.	.	1	.	
Certificate in Fitness & Exercise Management		6	2	.	.	.	.	
Certificate in Horticulture Crop Production		6	3	.	.	.	.	
Certificate in Livestock Production		4	4	3	5	9	8	
Certificate in Marketing		3	3	6	4	5	4	
Certificate in Media Literacy		.	.	.	5	3	2	
Certificate in Ornamental Horticulture Production		.	.	.	1	.	.	
Certificate in Substance Abuse Counselling		9	7	9	1	4	.	
Certificate in Welder Fitting		24	26	20	6	.	.	
Certified Dental Assistant Certificate		24	24	21	24	24	24	
Community Pharmacy Technician Cert -404 hrs		13	12	.	.	.	.	
Community Support Worker Certificate		14	17	14	13	15	19	
Computer Assisted Drafting Certificate - 192 hrs	14	14	11	7	2	4		
Cook Training Certificate	11	10	10	9	12	15		

Academic Year					
2006-07	2007-08	2008-09	2009-10	2010-11	2011-12

Credential	Program	2006-07	2007-08	2008-09	2009-10	2010-11	2011-12	
Certificate	Curr Agri Practices Essentials	.	.	.	.	.	3	
	Dental Receptionist Certificate - 303 hrs	.	13	13	9	17	9	
	Early Modern Studies Cert	.	.	.	.	.	1	
	Electronics Tech Common Core Cert	16	10	8	16	18	14	
	Family Childcare Certificate	19	30	28	29	36	37	
	Field Vegetable Prod Essential	.	.	.	.	.	3	
	Floral Design Certificate	.	7	.	.	7	9	
	Geographic Info Systems Cert	.	.	.	.	2	.	
	Health Care Assistant Cert	.	.	.	41	31	44	
	Health and Human Services Career Certificate	7	11	8	10	4	11	
	Heavy Duty /Commercial Transport Tech Certifi!	15	12	15	14	19	20	
	Home Support and Resident Care Attendant Cert!	24	41	40	3	2	1	
	Hort Crop Prod & Protection Cr	.	.	2	4	8	7	
	Hospitality Event Planning Crt	.	16	19	20	18	19	
	Indigenous Arts Certificate	.	.	8	2	.	.	
	Indigenous Studies	.	.	.	5	10	2	
	Integrated Pest Management Certificate	6	1	.	1	.	.	
	Integrated Pest Mgmt Essential	.	.	.	.	.	3	
	Introduction to Journalism Certificate	.	.	.	.	.	4	
	Joinery Certificate	3	3	5	8	9	5	
	Legal Administrative Assistant Cert	12	13	8	2	19	32	
	Library Technician Post-diploma Certificate	.	.	.	.	.	3	
	Medical Office Assistant Certificate	14	.	.	.	.	.	
	Milker Technician Certificate	.	.	.	.	4	6	
	Milker Training Certificate	.	2	1	.	.	.	
	Nursing Unit Clerk Certificate	39	16	66	31	68	39	
	Parts & Warehousing Certificate	1	.	.	.	.	.	
	Plumbing & Piping cert	.	.	.	20	15	11	
	Practical Nursing	18	15	23	15	22	21	
	Professional Communications Essentials Certific!	.	2	27	26	38	66	
	Sto:lo Studies Certificate	.	.	1	2	.	1	
	Teaching Eng as a Second Lang	25	21	14	11	26	27	
	Welding Level A Certificate	1	.	8	5	12	8	
	Welding Level B Certificate	10	4	28	27	19	16	
	Welding Level C Certificate	39	47	52	49	44	49	
	Developmental	BC Adult Graduation	4	13	11	7	8	11
		Cert:ESL Advanced I	7	19	11	13	2	5
		Cert:ESL Advanced II	8	16	21	12	11	11
		Cert:ESL Intermediate	28	17	11	8	4	2
		Cert:Eng Second Lang Academic	4	5	3	3	5	4
Cert:Eng Second Lang Advanced		13	.	1	.	.	.	
University Foundation Cert		9	4	2	6	1	1	
Workplace TASK Certificate		18	15	18	19	20	1	
Diploma		Aboriginal Culture & Language Support Diploma	.	.	.	1	.	.
		Associate of Arts Degree	46	48	42	36	29	37
	Associate of Science Degree	5	6	4	.	2	3	
	Dental Hygiene Diploma	.	16	15	14	15	13	
	Diploma in Agriculture Technology	11	9	5	4	9	8	
	Diploma in Aviation	4	1	2	3	7	7	
	Diploma in Business Administration	69	56	85	84	69	64	
	Diploma in Computer Information Systems	11	15	29	18	19	8	
	Diploma in Criminal Justice	32	26	43	42	35	39	

Credential	Program	Academic Year					
		2006-07	2007-08	2008-09	2009-10	2010-11	2011-12
Diploma	Diploma in Early Childhood Education	21	9	8	10	1	22
	Diploma in Fashion Design	11	13	14	8	12	11
	Diploma in Fitness & Exercise Management	1	.	.	.	.	.
	Diploma in General Studies	47	50	46	23	15	35
	Diploma in Graphic Design	.	.	.	.	2	5
	Diploma in Liberal Arts	58	65	49	46	46	80
	Diploma in Library & Information Technology	30	24	28	14	24	28
	Diploma in Social Services	47	49	29	30	40	32
	Diploma in Substance Abuse Counselling	2	5	2	.	1	1
	Diploma in Theatre Arts	12	8	6	3	8	4
Diploma in Visual Arts	7	7	7	5	9	7	
Masters Degree	Masters of Arts (Crim Justice)	2	3	6	5	35	18
<b>Total</b>		<b>1752</b>	<b>1828</b>	<b>1906</b>	<b>1758</b>	<b>2033</b>	<b>2068</b>

## Section 5: Demographic Statistics

### New and Returning Students

#### Unduplicated New and Returning Students

	2006-07	2007-08	2008-09	2009-10	2010-11	2011-12
<b>Type</b>						
New Students	4894	4971	5314	5728	5606	4988
Returning Students	8346	8299	8821	9509	9919	10188
<b>Total</b>	<b>13240</b>	<b>13270</b>	<b>14135</b>	<b>15237</b>	<b>15525</b>	<b>15176</b>

#### Unduplicated New and Returning Students per Semester

		2006-07	2007-08	2008-09	2009-10	2010-11	2011-12
<b>Semester</b>	<b>Type</b>						
Summer	Returning Students	3296	3071	3315	3634	3987	4201
	New Students	646	592	542	648	699	495
<b>Total Summer</b>		<b>3942</b>	<b>3663</b>	<b>3857</b>	<b>4282</b>	<b>4686</b>	<b>4696</b>
Fall	Returning Students	6491	6564	6961	7417	7813	8127
	New Students	2749	2827	3256	3463	3381	3092
<b>Total Fall</b>		<b>9240</b>	<b>9391</b>	<b>10217</b>	<b>10880</b>	<b>11194</b>	<b>11219</b>
Winter	Returning Students	7559	7742	8361	9173	9485	9309
	New Students	1499	1552	1516	1617	1526	1401
<b>Total Winter</b>		<b>9058</b>	<b>9294</b>	<b>9877</b>	<b>10790</b>	<b>11011</b>	<b>10710</b>

## Unduplicated New and Returning Students per Semester by Credential Type

			2006-07	2007-08	2008-09	2009-10	2010-11	2011-12
Semester	Type	Credential						
Summer	Returning Students	Bachelor Degree	822	831	977	1107	1253	1596
		Diploma	1592	1468	1429	1574	1569	1472
		Developmental	153	152	183	252	350	263
		Certificate	416	286	355	339	437	417
		Apprenticeship	63	36	72	53	44	42
		Masters Degree	.	.	.	.	.	45
		None	250	298	299	309	334	366
<b>Total Returning Students</b>			<b>3296</b>	<b>3071</b>	<b>3315</b>	<b>3634</b>	<b>3987</b>	<b>4201</b>
	New Students	Bachelor Degree	6	10	5	12	16	45
		Diploma	154	184	185	183	197	119
		Developmental	74	87	88	178	153	77
		Certificate	92	2	3	8	7	2
		Apprenticeship	27	28	20	19	6	4
		Masters Degree	.	.	.	.	.	1
		None	293	281	241	248	320	247
<b>Total New Students</b>			<b>646</b>	<b>592</b>	<b>542</b>	<b>648</b>	<b>699</b>	<b>495</b>
<b>Total Summer</b>			<b>3942</b>	<b>3663</b>	<b>3857</b>	<b>4282</b>	<b>4686</b>	<b>4696</b>
Fall	Returning Students	Bachelor Degree	1823	1956	2348	2692	3136	3552
		Diploma	3248	3140	3011	3079	3019	2976
		Developmental	225	218	238	428	557	517
		Certificate	464	446	476	461	419	423
		Apprenticeship	79	89	100	73	93	81
		Masters Degree	19	31	45	42	47	45
		None	633	684	743	642	542	533
<b>Total Returning Students</b>			<b>6491</b>	<b>6564</b>	<b>6961</b>	<b>7417</b>	<b>7813</b>	<b>8127</b>
	New Students	Bachelor Degree	301	403	632	684	785	750
		Diploma	1279	1219	1237	1334	1118	994
		Developmental	120	149	210	461	446	338
		Certificate	260	254	274	307	353	355
		Apprenticeship	10	14	10	29	7	17
		Masters Degree	17	8	4	7	7	7
		None	762	780	889	641	665	631
<b>Total New Students</b>			<b>2749</b>	<b>2827</b>	<b>3256</b>	<b>3463</b>	<b>3381</b>	<b>3092</b>
<b>Total Fall</b>			<b>9240</b>	<b>9391</b>	<b>10217</b>	<b>10880</b>	<b>11194</b>	<b>11219</b>
Winter	Returning Students	Bachelor Degree	2065	2378	2855	3186	3873	4142
		Diploma	3668	3512	3551	3681	3430	3302
		Developmental	239	243	348	616	659	575
		Certificate	702	692	669	762	763	695
		Apprenticeship	87	103	110	132	101	107
		Masters Degree	.	.	.	.	66	.
		None	798	814	828	796	593	488
<b>Total Returning Students</b>			<b>7559</b>	<b>7742</b>	<b>8361</b>	<b>9173</b>	<b>9485</b>	<b>9309</b>
	New Students	Bachelor Degree	57	61	75	68	106	107
		Diploma	377	354	414	474	420	364
		Developmental	87	139	275	321	265	291
		Certificate	160	133	156	93	87	68
		Apprenticeship	37	44	37	44	48	44
		Masters Degree	.	.	.	.	7	.
		None	781	821	559	617	593	527
<b>Total New Students</b>			<b>1499</b>	<b>1552</b>	<b>1516</b>	<b>1617</b>	<b>1526</b>	<b>1401</b>
<b>Total Winter</b>			<b>9058</b>	<b>9294</b>	<b>9877</b>	<b>10790</b>	<b>11011</b>	<b>10710</b>



## Gender and FT/PT Statistics

### Unduplicated Headcount by Gender and FT/PT

		2006-07	2007-08	2008-09	2009-10	2010-11	2011-12
FT/PT	Gender						
Full Time	F	3300	3288	3416	3674	3876	3885
	M	2213	2291	2550	2895	3041	3073
<b>Total Full Time</b>		<b>5513</b>	<b>5579</b>	<b>5966</b>	<b>6569</b>	<b>6917</b>	<b>6958</b>
Part Time	F	4842	4919	5225	5449	5414	5059
	M	2885	2772	2944	3219	3194	3159
<b>Total Part Time</b>		<b>7727</b>	<b>7691</b>	<b>8169</b>	<b>8668</b>	<b>8608</b>	<b>8218</b>
<b>Total</b>		<b>13240</b>	<b>13270</b>	<b>14135</b>	<b>15237</b>	<b>15525</b>	<b>15176</b>

### FTE by FT/PT and Gender

		2006-07	2007-08	2008-09	2009-10	2010-11	2011-12
FT/PT	Gender						
Full Time	F	2,974	2,993	3,112	3,308	3,485	3,503
	M	2,094	2,160	2,442	2,688	2,825	2,853
<b>Total Full Time</b>		<b>5,068</b>	<b>5,153</b>	<b>5,554</b>	<b>5,996</b>	<b>6,311</b>	<b>6,356</b>
Part Time	F	1,037	1,018	1,097	1,156	1,148	1,130
	M	670	648	743	751	753	744
<b>Total Part Time</b>		<b>1,707</b>	<b>1,667</b>	<b>1,840</b>	<b>1,907</b>	<b>1,901</b>	<b>1,874</b>
<b>Total</b>		<b>6,775</b>	<b>6,820</b>	<b>7,394</b>	<b>7,903</b>	<b>8,212</b>	<b>8,231</b>

### Average Age by FT/PT and Gender

		2006-07	2007-08	2008-09	2009-10	2010-11	2011-12
FT/PT	Gender						
Full Time	F	29.9	29.4	29.9	29.9	29.7	29.6
	M	26.6	26.0	26.8	26.5	26.5	26.5
Part Time	F	38.7	38.8	38.5	37.9	38.1	37.3
	M	36.7	36.3	35.7	35.6	35.0	35.0

## Unduplicated Headcount by FT/PT, Gender, and Age Category

			2006-07	2007-08	2008-09	2009-10	2010-11	2011-12
FT/PT	Gender	Age						
Full Time	F	<18	257	254	300	367	321	313
		18 to 24	2236	2259	2369	2537	2787	2798
		25 to 29	342	353	310	326	367	366
		30 to 34	136	127	131	129	120	115
		35 to 39	129	113	96	99	88	109
		40 to 49	157	145	158	167	144	138
		50 to 59	40	35	51	47	43	40
	60+	3	2	1	2	6	6	
	M	<18	211	245	240	310	300	277
		18 to 24	1590	1662	1884	2125	2238	2266
		25 to 29	229	213	239	274	298	334
		30 to 34	77	83	81	81	102	92
		35 to 39	37	38	41	44	46	45
		40 to 49	47	37	46	45	43	46
50 to 59		22	13	18	13	11	12	
60+	.	.	1	3	3	1		
<b>Total Full Time</b>			<b>5513</b>	<b>5579</b>	<b>5966</b>	<b>6569</b>	<b>6917</b>	<b>6958</b>
Part Time	F	<18	291	246	283	341	395	341
		18 to 24	1768	1777	1970	2098	2091	2095
		25 to 29	563	594	631	740	686	636
		30 to 34	387	407	451	392	379	369
		35 to 39	434	413	438	378	348	329
		40 to 49	808	839	811	810	784	659
		50 to 59	434	466	463	512	516	443
	60+	157	177	178	178	215	187	
	M	<18	269	220	249	240	259	250
		18 to 24	1265	1189	1306	1506	1547	1527
		25 to 29	323	333	378	401	401	404
		30 to 34	213	199	206	237	195	226
		35 to 39	174	195	193	171	185	185
		40 to 49	341	303	311	345	314	281
50 to 59		193	223	195	205	203	186	
60+	107	110	106	114	90	100		
<b>Total Part Time</b>			<b>7727</b>	<b>7691</b>	<b>8169</b>	<b>8668</b>	<b>8608</b>	<b>8218</b>
<b>Total</b>			<b>13240</b>	<b>13270</b>	<b>14135</b>	<b>15237</b>	<b>15525</b>	<b>15176</b>

## Credential Demographics

### Headcount by Credential, Gender and FT/PT

			2006-07	2007-08	2008-09	2009-10	2010-11	2011-12
Credential	FT/PT	Gender						
Bachelor Degree	Full Time	F	1223	1412	1595	1806	2131	2231
		M	563	643	797	973	1264	1409
	Part Time	F	560	585	758	819	878	940
		M	275	296	395	415	490	572
Diploma	Full Time	F	1992	1696	1577	1677	1527	1453
		M	1214	1140	1154	1261	1206	1117
	Part Time	F	2112	1997	2030	2047	1936	1801
		M	1144	1150	1176	1344	1239	1162
Developmental	Full Time	F	166	158	153	259	262	215
		M	148	221	232	310	342	243
	Part Time	F	163	160	358	597	646	600
		M	82	94	218	413	383	375
Certificate	Full Time	F	335	325	312	351	340	314
		M	244	222	237	317	300	312
	Part Time	F	314	257	260	241	255	247
		M	367	250	325	254	301	260
Apprenticeship	Full Time	F	4	4	5	4	5	5
		M	254	266	292	304	263	258
	Part Time	M	5	9	5	10	11	7
		F	11	8	6	9	6	23
Masters Degree	Full Time	M	4	8	8	1	6	8
		F	9	14	27	22	47	12
	Part Time	M	12	11	10	23	23	16
		F	110	101	107	67	56	53
None	Full Time	M	69	46	47	35	37	27
		F	469	487	367	264	225	147
	Part Time	M	220	240	154	139	100	106
<b>Total</b>			<b>12069</b>	<b>11800</b>	<b>12605</b>	<b>13962</b>	<b>14279</b>	<b>13913</b>

Note: CS students are not included.

## FTE by Credential, FT/PT, and Gender

Credential	FT/PT	Gender	2006-07	2007-08	2008-09	2009-10	2010-11	2011-12
			FTE	FTE	FTE	FTE	FTE	FTE
Bachelor Degree	Full Time	F	1,064	1,218	1,386	1,538	1,785	1,913
		M	501	537	702	834	1,071	1,228
	Part Time	F	169	183	234	260	283	311
		M	79	96	130	139	167	196
<b>Total Bachelor Degree</b>			<b>1,812</b>	<b>2,033</b>	<b>2,452</b>	<b>2,770</b>	<b>3,306</b>	<b>3,648</b>
Diploma	Full Time	F	1,339	1,209	1,135	1,166	1,054	996
		M	899	851	892	945	864	819
	Part Time	F	514	496	512	510	489	472
		M	316	317	321	368	348	318
<b>Total Diploma</b>			<b>3,068</b>	<b>2,873</b>	<b>2,860</b>	<b>2,990</b>	<b>2,755</b>	<b>2,606</b>
Developmental	Full Time	F	158	154	145	207	217	174
		M	148	216	230	277	318	203
	Part Time	F	58	49	82	144	154	148
		M	29	34	61	102	95	96
<b>Total Developmental</b>			<b>392</b>	<b>454</b>	<b>518</b>	<b>731</b>	<b>783</b>	<b>621</b>
Certificate	Full Time	F	315	298	329	303	359	332
		M	191	197	215	242	242	288
	Part Time	F	116	112	96	97	86	89
		M	131	100	146	74	83	68
<b>Total Certificate</b>			<b>754</b>	<b>707</b>	<b>787</b>	<b>715</b>	<b>771</b>	<b>777</b>
Apprenticeship	Full Time	F	5	4	5	4	8	5
		M	297	311	359	355	294	287
	Part Time	M	0	0	0	0	0	0
<b>Total Apprenticeship</b>			<b>302</b>	<b>315</b>	<b>364</b>	<b>359</b>	<b>302</b>	<b>292</b>
Masters Degree	Full Time	F	9	6	5	7	5	19
		M	3	6	7	1	5	6
	Part Time	F	5	3	6	3	9	2
		M	6	4	1	4	4	4
<b>Total Masters Degree</b>			<b>23</b>	<b>20</b>	<b>19</b>	<b>15</b>	<b>22</b>	<b>32</b>
None	Full Time	F	84	104	106	83	58	64
		M	55	41	38	34	30	22
	Part Time	F	177	175	168	142	127	108
		M	108	97	82	64	57	61
<b>Total None</b>			<b>423</b>	<b>417</b>	<b>394</b>	<b>322</b>	<b>272</b>	<b>256</b>
<b>Total</b>			<b>6,775</b>	<b>6,820</b>	<b>7,394</b>	<b>7,903</b>	<b>8,212</b>	<b>8,231</b>

## Average Age by Credential, FT/PT and Gender

			2006-07	2007-08	2008-09	2009-10	2010-11	2011-12
Credential	FT/PT	Gender						
Bachelor Degree	Full Time	F	26.0	25.7	25.4	24.8	24.3	24.1
		M	24.1	23.3	22.9	22.7	22.5	22.6
	Part Time	F	32.1	30.8	30.1	29.3	28.4	28.4
		M	29.3	28.8	27.1	25.9	25.6	25.8
Diploma	Full Time	F	24.2	23.7	23.6	23.5	23.2	23.1
		M	22.4	22.3	22.1	22.4	22.7	22.6
	Part Time	F	30.9	30.3	29.8	29.1	28.5	27.5
		M	26.6	26.3	26.6	25.7	25.2	24.9
Developmental	Full Time	F	24.4	24.9	25.0	25.5	26.0	26.0
		M	23.5	21.7	23.5	22.5	23.0	23.0
	Part Time	F	30.0	30.2	36.6	36.1	37.2	35.3
		M	30.4	28.6	32.0	34.0	32.8	32.0
Certificate	Full Time	F	27.3	26.8	26.6	26.7	26.4	26.7
		M	23.1	22.5	24.5	22.5	22.6	22.8
	Part Time	F	29.5	28.7	28.9	27.5	29.1	28.5
		M	22.1	22.0	23.3	25.2	24.3	24.1
Apprenticeship	Full Time	F	30.2	25.6	27.5	23.6	25.2	28.5
		M	24.9	24.7	25.3	25.3	25.4	24.9
	Part Time	M	27.5	26.9	29.8	26.3	27.4	28.7
Masters Degree	Full Time	F	30.4	35.9	39.2	40.8	39.8	38.9
		M	37.8	37.8	40.0	38.9	35.6	42.0
	Part Time	F	33.8	35.1	36.6	36.5	38.1	39.8
		M	36.0	36.9	34.7	38.2	41.3	42.1
None	Full Time	F	29.5	28.9	27.6	28.6	26.1	26.5
		M	27.7	26.8	27.4	23.4	22.3	21.8
	Part Time	F	39.8	39.7	38.5	36.5	36.6	37.4
		M	38.9	40.1	39.4	37.5	37.0	37.5

## Program Path Statistics

### Headcount for Program Path Students by FT/PT and Gender

				2006-07	2007-08	2008-09	2009-10	2010-11	2011-12
Program Type	Student Type	FT/PT	Gender						
Program Path	Domestic	Full Time	F	1142	949	853	1008	928	929
			M	648	582	607	691	684	677
	Part Time	F	1600	1520	1532	1538	1489	1394	
		M	854	860	854	1029	971	900	
<b>Total Domestic</b>				<b>4244</b>	<b>3911</b>	<b>3846</b>	<b>4266</b>	<b>4072</b>	<b>3900</b>
	International	Full Time	F	38	45	54	60	70	65
			M	46	60	63	67	109	119
	Part Time	F	9	11	18	23	25	21	
		M	13	14	22	27	38	33	
<b>Total International</b>				<b>106</b>	<b>130</b>	<b>157</b>	<b>177</b>	<b>242</b>	<b>238</b>
<b>Total</b>				<b>4350</b>	<b>4041</b>	<b>4003</b>	<b>4443</b>	<b>4314</b>	<b>4138</b>

### Program Path Average Age by FT/PT and Gender

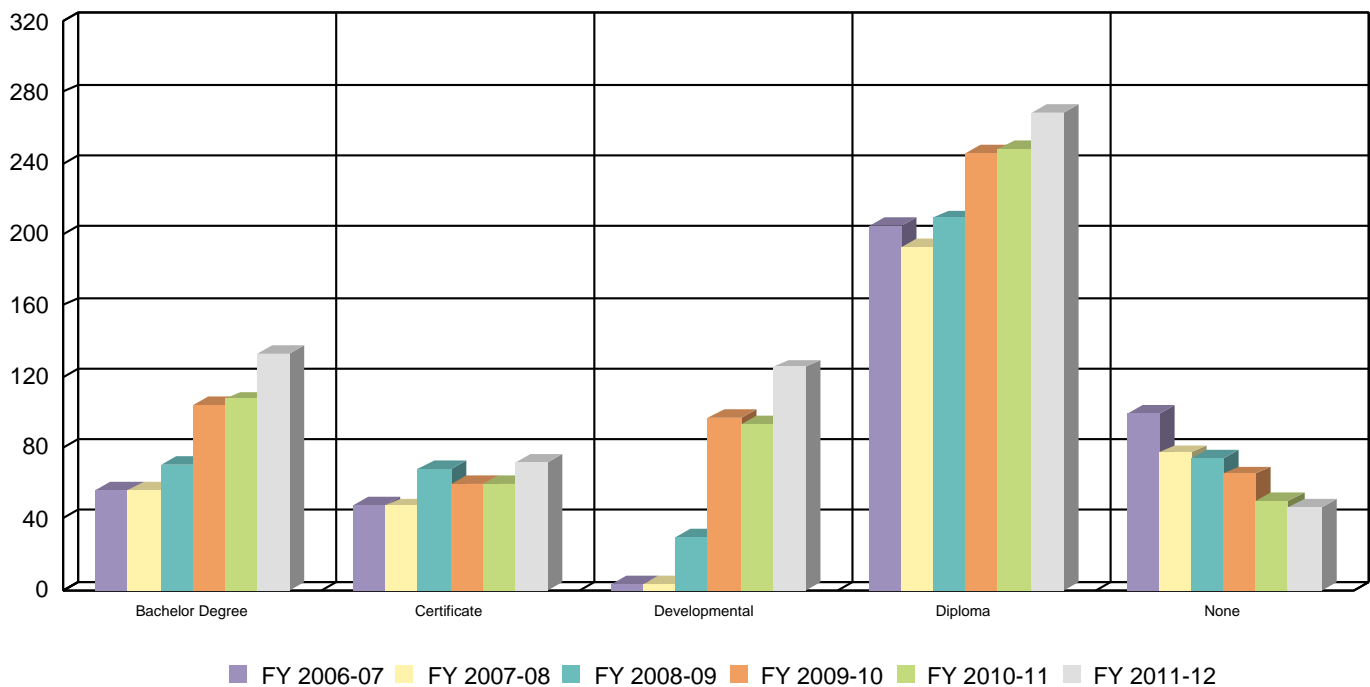
				2006-07	2007-08	2008-09	2009-10	2010-11	2011-12
Program Type	Student Type	FT/PT	Gender						
Program Path	Domestic	Full Time	F	24.3	23.5	23.7	23.3	23.1	22.7
			M	22.4	22.5	22.4	22.5	22.7	22.2
	Part Time	F	31.3	30.6	29.8	29.1	28.1	26.7	
		M	28.1	27.3	27.4	26.1	25.1	24.8	
	International	Full Time	F	23.4	21.7	21.0	22.3	20.7	21.9
			M	22.8	21.4	20.9	21.5	22.2	22.3
	Part Time	F	23.7	22.1	23.2	21.1	22.8	20.9	
		M	24.0	22.3	21.2	21.5	21.5	22.9	

## Self Declared Aboriginal Statistics

### Aboriginal Headcount by Program Credential Type

	2006-07	2007-08	2008-09	2009-10	2010-11	2011-12
<b>Credential Type</b>						
Bachelor Degree	56	56	70	104	107	133
Diploma	205	193	209	246	248	269
Developmental	3	3	30	97	93	125
Certificate	48	47	68	60	60	72
Apprenticeship	3	2	3	4	6	6
Masters Degree	2	2	.	1	2	1
None	99	77	74	65	50	46
<b>Total</b>	<b>416</b>	<b>380</b>	<b>454</b>	<b>577</b>	<b>566</b>	<b>652</b>

Aboriginal Headcount by Credential Type



### Unduplicated Aboriginal Headcount by FT/PT and Gender

		2006-07	2007-08	2008-09	2009-10	2010-11	2011-12
<b>FT/PT</b>	<b>Gender</b>						
Full Time	F	114	133	132	166	165	184
	M	48	39	52	76	80	82
Part Time	F	178	135	174	232	206	253
	M	42	48	59	64	79	88
<b>Total</b>		<b>382</b>	<b>355</b>	<b>417</b>	<b>538</b>	<b>530</b>	<b>607</b>



## Aboriginal Average Age by FT/PT and Gender

		2006-07	2007-08	2008-09	2009-10	2010-11	2011-12
FT/PT	Gender						
Full Time	F	30.1	30.5	29.4	29.7	28.2	28.3
	M	26.7	26.2	27.9	26.7	25.1	24.2
Part Time	F	33.6	32.9	31.9	31.5	32.1	30.8
	M	29.8	29.1	30.3	26.1	29.9	30.6

## Aboriginal FTEs by FT/PT and Gender

		2006-07	2007-08	2008-09	2009-10	2010-11	2011-12
FT/PT	Gender	FTE	FTE	FTE	FTE	FTE	FTE
Full Time	F	101	118	115	144	141	159
	M	42	35	48	63	68	75
Part Time	F	45	32	48	57	58	68
	M	11	14	18	16	20	26
<b>Total</b>		<b>199</b>	<b>199</b>	<b>229</b>	<b>280</b>	<b>287</b>	<b>327</b>

## Continuing Studies Statistics

### Continuing Studies Headcount by FT/PT and Gender

		2006-07	2007-08	2008-09	2009-10	2010-11	2011-12
FT/PT	Gender						
Full Time	F	73	49	99	47	95	109
	M	3	5	7	6	11	6
Part Time	F	1415	1585	1616	1648	1563	1453
	M	843	771	728	703	720	718
<b>Total</b>		<b>2334</b>	<b>2410</b>	<b>2450</b>	<b>2404</b>	<b>2389</b>	<b>2286</b>

### Continuing Studies Average Age by FT/PT and Gender

		2006-07	2007-08	2008-09	2009-10	2010-11	2011-12
FT/PT	Gender						
Full Time	F	30.0	27.0	25.7	26.7	27.0	28.8
	M	43.8	25.3	24.1	25.9	30.8	21.9
Part Time	F	39.4	39.0	39.3	38.4	39.4	40.2
	M	39.7	41.4	40.9	41.0	40.3	41.1

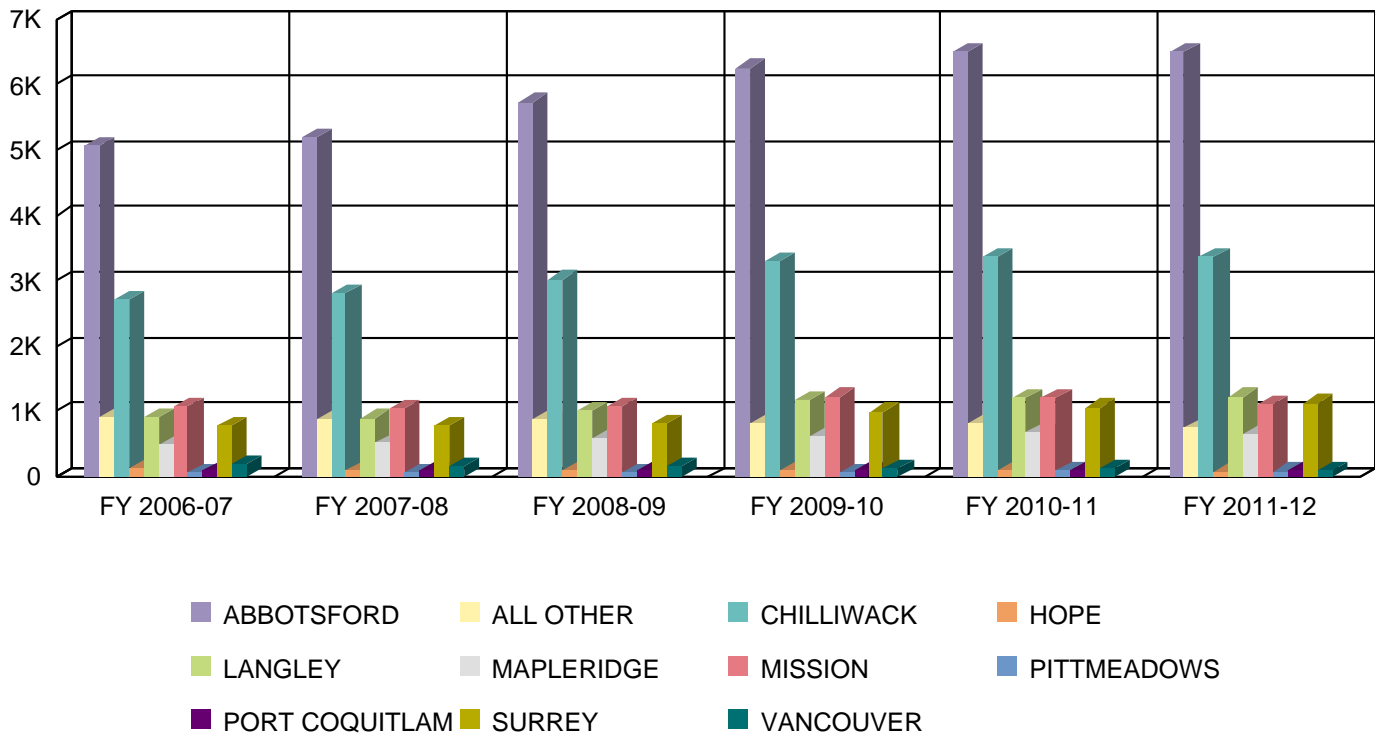
**Location Statistics**

**Top 10 BC Cities that UFV Students Reside**

City	FT/PT	2006-07	2007-08	2008-09	2009-10	2010-11	2011-12
		ABBOTSFORD	Full Time	2045	2124	2376	2792
	Part Time	3017	3070	3355	3461	3421	3384
CHILLIWACK	Full Time	909	884	1027	1172	1183	1257
	Part Time	1802	1931	1992	2125	2173	2104
MISSION	Full Time	321	342	399	422	455	454
	Part Time	740	690	690	801	765	657
LANGLEY	Full Time	429	447	508	557	601	629
	Part Time	474	449	501	623	602	595
SURREY	Full Time	363	371	364	488	536	609
	Part Time	423	415	462	506	524	515
MAPLERIDGE	Full Time	253	262	279	330	365	374
	Part Time	239	246	297	283	306	270
HOPE	Full Time	20	17	22	22	16	22
	Part Time	94	69	70	80	92	58
VANCOUVER	Full Time	101	83	67	57	50	43
	Part Time	90	89	82	77	71	52
PORT COQUITLAM	Full Time	45	61	46	45	47	40
	Part Time	55	42	57	41	53	42
PITTMeadOWS	Full Time	33	32	32	36	46	48
	Part Time	32	33	29	39	38	32
ALL OTHER	Full Time	399	355	375	334	344	305
	Part Time	524	522	494	480	468	436
<b>Total</b>		<b>12408</b>	<b>12534</b>	<b>13524</b>	<b>14771</b>	<b>15223</b>	<b>15053</b>

Note: Residence information is provided by students.

**Top 10 Locations**



## UFV Student Headcount per BC Regional District

	2006-07	2007-08	2008-09	2009-10	2010-11	2011-12
<b>Regional District</b>						
Alberni-Clayoquot	3	2	1	.	.	2
Bulkley-Nechako	6	7	7	11	8	7
Capital	43	47	41	29	17	23
Cariboo	20	17	23	20	20	19
Central Coast Regional District	2	1	1	1	1	.
Central Kootenay	9	6	6	7	3	5
Central Okanagan	40	33	31	35	42	30
Columbia-Shuswap	5	5	7	11	8	8
Comox Valley	9	5	6	7	8	7
Cowichan Valley	5	5	6	6	1	3
East Kootenay	5	3	3	5	4	6
Fraser Valley	9204	9378	10182	11090	11378	11232
Fraser-Fort George	17	20	20	23	17	20
Kitimat-Stikine	10	4	6	9	5	5
Kootenay Boundary	7	4	3	3	5	6
Metro Vancouver	2946	2935	3109	3450	3625	3602
Mount Waddington	1	1	2	1	4	.
Nanaimo	23	19	19	15	19	12
North Okanagan	4	3	7	4	4	3
Northern Rockies	.	1	.	.	.	.
Okanagan-Similkameen	9	7	12	9	10	14
Peace River	4	5	5	6	5	4
Powell River	2	2	1	2	6	9
Skeena-Queen Charlotte	3	2	2	.	.	1
Squamish-Lillooet	7	4	4	8	9	8
Strathcona	8	7	5	3	3	7
Sunshine Coast	1	1	.	1	1	2
Thompson-Nicola	15	10	15	15	20	18
<b>Total</b>	<b>12408</b>	<b>12534</b>	<b>13524</b>	<b>14771</b>	<b>15223</b>	<b>15053</b>

## International Student Country of Origin

	2006-07	2007-08	2008-09	2009-10	2010-11	2011-12
<b>Country</b>						
Australia	1	1	2	2	1	.
Bahrain	1	1	.	.	.	.
Bangladesh	3	.	.	1	3	2
Belarus	1	1	.	.	.	.
Brazil	.	1	1	1	2	3
Cameroon	1	1	.	.	1	1
China	267	261	317	379	425	413
Cuba	.	.	.	1	.	.
Czech Republic	.	1	.	1	2	2
Egypt	.	.	.	.	.	1
El Salvador	.	.	.	.	.	1
Ethiopia	.	.	1	1	1	1
Fiji	.	.	.	1	1	1
Finland	1	.	.	.	.	.
France	.	.	.	.	1	1
Gambia	.	1	1	1	1	.
Germany	2	1	3	1	1	.
Ghana	.	2	3	3	6	6
Haiti	.	.	.	1	2	2
Hong Kong	5	5	3	4	4	3
India	28	41	82	110	165	196
India - Offshore Chandigarh Campus	9	19	27	27	29	58
Indonesia	4	3	3	4	2	.
Iran (Islamic Republic of)	1	2	.	1	1	1
Iraq	.	2	4	5	3	3
Israel	.	.	1	3	2	2
Italy	1	.	1	1	.	.
Japan	46	35	36	37	36	26
Jordan	2	1	3	4	.	.
Kazakhstan	7	11	12	9	11	7
Kenya	2	1	.	1	2	2
Kuwait	1	.	.	.	.	.
Lebanon	.	1	1	1	3	2
Libyan Arab Jamahiriya	.	.	1	.	.	.
Malaysia	1	.	.	1	2	2
Mauritius	.	.	5	4	7	10
Mexico	3	5	3	.	3	1
Morocco	1	15	23	22	21	15
Netherlands	.	1	.	.	.	.
Nigeria	2	6	9	13	14	15
Norway	2	1	1	2	1	1
Oman	1	.	.	.	.	.
Pakistan	3	3	5	5	9	10
Palestine	1	1	.	.	.	.
Philippines	.	.	.	1	1	.
Republic of Korea	92	93	94	78	72	65
Russian Federation	1	.	1	3	3	5
Saudi Arabia	8	103	77	59	93	78
Singapore	1	1	1	.	.	.
Slovakia (slovak Republic)	1	.	.	.	.	.
Spain	.	.	1	2	.	.

## International Student Country of Origin

	2006-07	2007-08	2008-09	2009-10	2010-11	2011-12
<b>Country</b>						
Sri Lanka	5	5	4	1	.	.
Sweden	1	2	1	.	.	.
Switzerland	3	1	2	10	1	5
Syrian Arab Republic	1	2	1	.	.	.
Taiwan	37	34	32	18	18	13
Thailand	.	1	1	2	1	2
Trinidad and Tobago	2	.	.	.	.	.
Turkey	3	5	4	2	1	1
Uganda	.	.	2	1	1	.
Ukraine	.	.	.	1	1	1
United Arab Emirates	4	3	3	3	5	4
United Kingdom	1	2	5	3	2	2
United Republic of Tanzania	2	1	1	.	.	2
United States of America	4	7	7	8	6	5
Venezuela	3	1	1	1	1	.
Vietnam	1	2	1	4	6	5
Yemen	.	2	.	.	.	.
Zambia	.	.	.	1	1	.
<b>Total</b>	<b>567</b>	<b>689</b>	<b>787</b>	<b>845</b>	<b>975</b>	<b>976</b>

## Course Delivery Method

### Academic Registrations by Online and In Class

---

	2000-01	2001-02	2002-03	2003-04	2004-05	2005-06
<b>Online</b>	185	908	1358	1307	1745	2338
<b>In Class</b>	33844	47261	52752	53068	53764	57049
<b>Total</b>	34029	48169	54110	54375	55509	59387
<b>Online %</b>	.54	1.89	2.51	2.40	3.14	3.94
<b>In Class %</b>	99.46	98.11	97.49	97.60	96.86	96.06

### Academic Registrations by Online and In Class

---

	2006-07	2007-08	2008-09	2009-10	2010-11	2011-12
<b>Online</b>	2970	2576	3306	4471	4504	4723
<b>In Class</b>	56690	56689	60559	64242	67103	68189
<b>Total</b>	59660	59265	63865	68713	71607	72912
<b>Online %</b>	4.98	4.35	5.18	6.51	6.29	6.48
<b>In Class %</b>	95.02	95.65	94.82	93.49	93.71	93.52

## Department Statistics

### Average Academic Grades Awarded by Department

	2006-07	2007-08	2008-09	2009-10	2010-11	2011-12
<b>Department</b>						
Aboriginal Services	.	2.53	2.63	2.73	1.88	.
Adult Education	3.68	3.74	3.61	3.56	3.58	3.38
Agricultural Technology	2.98	3.08	3.11	2.94	3.18	3.14
Applied Business Technology	2.45	2.47	2.48	2.87	2.91	3.04
Aviation	3.03	2.83	2.88	2.64	2.92	2.87
Biology	2.77	2.82	2.96	2.84	2.85	2.91
Business Administration	2.72	2.76	2.73	2.78	2.79	2.80
Chemistry	2.44	2.47	2.42	2.44	2.51	2.55
Communications	2.81	2.73	2.72	2.89	2.83	2.94
Computer Information Systems	2.63	2.77	2.71	2.70	2.80	2.87
Criminal Justice	2.91	2.98	2.95	2.88	2.95	2.92
Early Childhood and Youth Care	3.37	3.40	3.35	3.32	3.57	3.48
Economics	2.37	2.43	2.50	2.53	2.58	2.47
Education	2.81	3.52	3.60	3.51	3.70	3.70
English	2.73	2.84	2.87	2.83	2.84	2.74
Fashion Design	2.76	3.18	2.97	2.87	3.00	3.00
Geography	2.64	2.74	2.81	2.80	2.74	2.72
Graphic Design	2.92	.	.	3.00	3.24	.
Health Science	3.21	3.24	3.23	3.28	3.22	3.20
History	2.69	2.70	2.75	2.60	2.62	2.57
Humanities	2.43	3.29	2.73	.	2.81	2.51
Kinesiology and Physical Educ.	2.89	2.86	2.88	2.83	2.93	2.92
Library and Information Tech	3.04	3.01	2.99	3.03	3.38	3.30
Mathematics	2.27	2.38	2.34	2.26	2.34	2.48
Modern Languages	2.83	2.84	2.86	2.93	2.86	2.78
Philosophy/Political Science	2.84	2.79	2.85	2.80	2.97	2.91
Physics	2.78	2.85	2.69	2.68	2.62	2.69
Psychology	2.63	2.45	2.38	2.42	2.51	2.48
Social Cultural & Media Studie	2.49	2.59	2.58	2.58	2.57	2.63
Social Work and Human Services	3.13	3.22	3.14	3.11	3.10	3.18
Theatre	3.43	3.57	3.47	3.38	3.40	3.46
Visual Arts	3.01	3.10	3.11	3.05	3.05	3.07

## Employee Demographics for the 2011-12 Fiscal Year

### *Employee Count*

Type	Gender	
	F	M
Cont Ed	63	27
Contracted Employee	13	3
Hourly Counselor	1	0
Hourly Employee	102	19
Hourly Faculty	36	28
Hourly Non Teaching	4	3
Non Teaching Faculty	19	4
Perm Counselor	18	3
Perm Director	8	3
Perm Excluded	40	26
Perm Faculty	184	158
Permanent Staff	285	80
Sessional Faculty	132	155
Temp Counselor	0	1
Temp Excluded	9	3
Temp Faculty	2	1
<b>Total</b>	<b>916</b>	<b>514</b>

### *Employee % of Total*

Type	Gender	
	F	M
Cont Ed	4.4%	1.9%
Contracted Employee	.9%	.2%
Hourly Counselor	.1%	.
Hourly Employee	7.1%	1.3%
Hourly Faculty	2.5%	2.0%
Hourly Non Teaching	.3%	.2%
Non Teaching Faculty	1.3%	.3%
Perm Counselor	1.3%	.2%
Perm Director	.6%	.2%
Perm Excluded	2.8%	1.8%
Perm Faculty	12.9%	11.0%
Permanent Staff	19.9%	5.6%
Sessional Faculty	9.2%	10.8%
Temp Counselor	.	.1%
Temp Excluded	.6%	.2%
Temp Faculty	.1%	.1%
<b>TOTAL</b>	<b>64.1%</b>	<b>35.9%</b>

### **Average Age of Employee**

Type	Gender	
	F	M
Cont Ed	50.5	50.7
Contracted Employee	35.6	31.2
Hourly Counselor	58.6	.
Hourly Employee	37.3	36.2
Hourly Faculty	43.4	49.4
Hourly Non Teaching	38.8	37.7
Non Teaching Faculty	46.6	61.7
Perm Counselor	46.3	45.9
Perm Director	54.7	50.2
Perm Excluded	49.4	51.8
Perm Faculty	50.2	52.7
Permanent Staff	45.0	44.9
Sessional Faculty	46.6	49.0
Temp Counselor	.	30.3
Temp Excluded	53.8	51.7
Temp Faculty	49.2	46.2



## Section 6: Financial Data

**University of the Fraser Valley**  
**Summary of Revenues and Expenses**  
**For the Fiscal Year April 1, 2011 to March 31, 2012**

Revenue Source	10/11 Final	Contractual	Budget	Total Budget	11/12	% Change
	Budget	Obligations	Changes	Change	Proposed Budget	
Provincial Grant	53,264,084	-	512,000	512,000	53,776,084	1.0%
ELTT/ITAC Grant	2,050,200	-	-195,800	-195,800	1,854,400	-9.6%
Net Tuition - Ongoing	20,949,061	-	1,565,000	1,565,000	22,514,061	7.5%
Other Income	2,855,400	-	280,000	280,000	3,135,400	9.8%
<b>Subtotal</b>	<b>79,118,745</b>		<b>2,161,200</b>	<b>2,161,200</b>	<b>81,279,945</b>	<b>2.7%</b>
Continuing Programs/PT Programs	1,622,545	-	-	-	1,622,545	0%
International Education	7,252,943	-	2,187,500	2,187,500	9,440,443	30.2%
Contract & Self Funded Programs	153,359	-	-	-	153,359	0%
Parking	936,805	-	-	-	936,805	0%
Ancillary Services	4,923,070	-	-	-	4,923,070	0%
Student Residence	1,369,809	-	-	-	1,369,809	0%
CEP Lease Revenue	91,258	-	-	-	91,258	0%
<b>Grand Total</b>	<b>95,468,534</b>	<b>-</b>	<b>4,348,700</b>	<b>4,348,700</b>	<b>99,817,234</b>	<b>4.6%</b>

### Expense Budget

DIVISION	10/11 Final	Contractual	Budget	Total Budget	11/12	% Change
	Budget	Obligations	Changes	Change	Proposed Budget	
Board Office & President	1,303,634	11,131	-	11,131	1,314,765	0.9%
VP - External	5,336,901	143,494	224,875	368,369	5,705,270	6.9%
VP - Academic	9,047,750	179,257	560,817	740,074	9,787,823	8.2%
VP - Student	4,543,836	64,562	121,650	186,212	4,730,049	4.1%
CFO	8,009,687	384,426	70,500	454,926	8,464,613	5.7%
AVP - Employee Services	1,684,254	15,821	210,400	226,221	1,910,475	13.4%
University Wide	7,066,875	115,166	-	115,166	7,182,041	1.6%
AVP - Research and Graduate Studies	888,059	1,522	-	1,522	889,581	0.2%
College of Arts	954,411	15,905	242,492	258,397	1,212,808	27.1%
Faculty of Humanities	8,788,247	112,848	415,184	528,032	9,316,279	6.0%
Faculty of Social Sciences	6,229,591	71,024	129,815	200,839	6,430,430	3.2%
Faculty of Access & Open Studies	3,815,195	50,339	45,220	95,559	3,910,754	2.5%
Faculty of Health Sciences	6,888,488	87,718	87,843	175,561	7,064,049	2.5%
Faculty of Professional Studies	6,878,632	33,743	692,227	725,970	7,604,603	10.6%
Faculty of Science	7,596,823	52,507	121,989	174,496	7,771,320	2.3%
Faculty of Trades and Technology	4,666,332	-115,703	22,367	-93,336	4,572,996	-2.0%
<b>Subtotal</b>	<b>83,698,716</b>	<b>1,223,760</b>	<b>2,945,380</b>	<b>4,169,139</b>	<b>87,867,857</b>	<b>5.0%</b>
Part Time Programming	1,383,952	-	-	-	1,383,952	0.0%
International Education	3,813,754	-	179,560	179,560	3,993,314	4.7%
Parking	511,220	-	-	-	511,220	0.0%
Ancillary Services	4,608,070	-	-	-	4,608,070	0.0%
Student Residence (Operations)	1,452,822	-	-	-	1,452,822	0.0%
<b>Grand Total</b>	<b>95,468,534</b>	<b>1,223,760</b>	<b>3,124,940</b>	<b>4,348,700</b>	<b>99,817,234</b>	<b>4.6%</b>

Source: UFV Finance

## Section 7: Library Services

### UFV LIBRARY SERVICES (2011/12)

COLLECTIONS	2006/07	2007/08	2008/09	2009/10	2010/11	2011/12
Volumes	167,650	172,318	173,047	174,757	185,212	172,301
Videos and Films	7,634	7,935	8,381	9,001	9,296	9,692
Other Audio/Visual Formats	1,098	884	968	973	1,040	964
Back Issues Periodicals	25,964	26,628	27,291	27,890	28,454	28,910
Electronic Titles				82,011	116,197	205,942
<b>TOTAL</b>	<b>202,346</b>	<b>207,765</b>	<b>209,687</b>	<b>294,632</b>	<b>340,199</b>	<b>417,809</b>

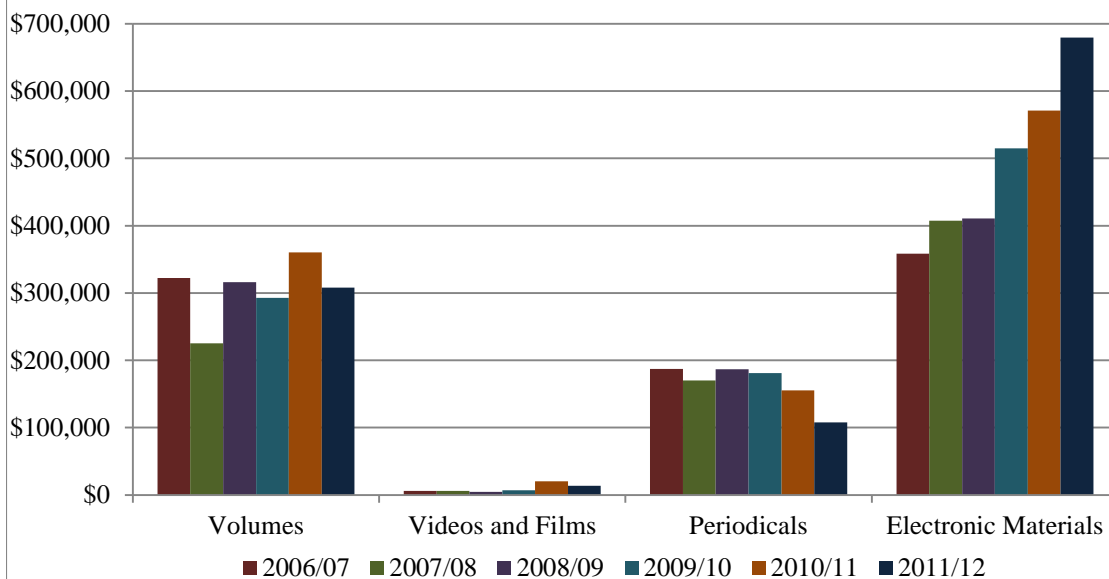
\*Note that methodology for counting electronic titles changed in 2011/12 to include more types of materials than in previous years

STAFF*	2006/07	2007/08	2008/09	2009/10	2010/11	2011/12
FTE Librarians	6.6	7.5	6.8	6.6	7.7	8.3
FTE Library Staff	16.8	16.9	16.9	16.3	15.9	14.5
<b>TOTAL</b>	<b>23.35</b>	<b>24.33</b>	<b>23.66</b>	<b>22.92</b>	<b>23.63</b>	<b>22.75</b>

\*Includes staff from Abbotsford, Chilliwack and Mission campuses

LIBRARY ACQUISITIONS	2006/07	2007/08	2008/09	2009/10	2010/11	2011/12
Volumes	\$322,458	\$225,275	\$316,157	\$292,769	\$360,446	\$308,173
Videos and Films	\$6,111	\$6,246	\$4,457	\$6,990	\$20,179	\$13,536
Periodicals	\$187,062	\$170,083	\$186,524	\$181,203	\$155,166	\$107,663
Electronic Materials	\$358,275	\$407,406	\$410,496	\$514,963	\$570,943	\$679,403
<b>TOTAL</b>	<b>\$873,906</b>	<b>\$809,010</b>	<b>\$917,634</b>	<b>\$995,925</b>	<b>\$1,106,734</b>	<b>\$1,108,775</b>

### Library Collections (2006/07 - 2011/12)



Source: UFV Library Services

## **Section 8: Faculty, Staff and Research**

<b>Research Funds</b>	2011-2012 Total
New Research Grants/Awards/Chairs Received	19
New Research Grants/Awards/Chairs Funds Awarded	2,587,247
Funds Received from New Grants/Awards/Chairs	647,162
Funds Received from Ongoing Grants/Awards/Chairs	984,473
<b>Total Grants/Awards/Chairs Funds Received</b>	<b>1,631,635</b>
<b>Research Expenditures</b>	
Salaries for Administration, Staff and Student Research Positions	1,269,330
Faculty Teaching Releases for Research & Scholarly Activity (80 sections)	550,256
Other Associated Costs	1,141,845
<b>Total Research Expenditures</b>	<b>2,961,431</b>

<b>Teaching Faculty</b>		
	<b>Total</b>	<b>PhD</b>
Permanent	327	144
Non-permanent	383	91

<b>Non-teaching Faculty</b>		
	<b>Total</b>	<b>PhD</b>
Permanent	22	2
Non-Permanent	8	0

<b>Staff</b>	
Permanent	371
Non-permanent	146

<b>Counsellors</b>	
Permanent	16
Non-permanent	2

<b>Management</b>	56
-------------------	----

<b>Directors</b>	17
------------------	----

<b>Continuing Ed</b>	81
----------------------	----

<b>Total employees</b>	1431
------------------------	------

## **Section 9: Student Services**

### **Alumni**

Total Alumni as of March 31, 2012: 27,801

### **Athletics**

137 student athletes participate in a varsity sport for UFV.

M Basketball	13
W Basketball	14
M Soccer	26
W Soccer	25
M Golf	8
M Volleyball	16
W Volleyball	14
M/W Rowing	21

### **Writing Centre**

Total number of workshops delivered in content courses: 63

Total individual appointments: 2225

Total unique users: 1111

Appointments with Graduate students: 4%

Appointments with International students: 14%

Usage by faculty: Arts 38%, Professional Studies 15%, Science 12%, Health Sciences 12%, Grad Studies 5%, Other 18%

### **Disability Resource Centre**

Summer 2011: Students served – 694; Exams invigilated – 150

Fall 2011: Students served –746; Exams invigilated – 449

Winter 2012: Students served –772; Exams invigilated – 426

### **Counselling Statistics**

876 students participated in Study Skills/Academic workshops/instruction

1413 Personal counselling appointments

1270 Career counselling appointments

42 Workshops

204 Consults

3291 Total Appointments (career, crisis, academic and personal counselling)

## **Financial Aid & Awards**

484 Recipients for Bursaries valued at \$326,820  
291 Recipients for Scholarships valued at \$296,461  
41 Recipients for BC Athletic Assistance Program valued at \$24,949  
90 Recipients for Emergency Grants valued at \$40,229  
216 Recipients for Entrance Scholarships valued at \$285,533  
37 Recipients for Continuing Studies Bursaries valued at \$18,895  
111 Recipients received Private/External Awards valued at \$134,349

Total value of Scholarships and Bursaries administered through Financial Aid & Awards for 2011-2012 was \$1,127,238

## **Advising**

Number of scheduled educational advising appointments delivered:

Summer 2011 – 2055

Fall 2011 – 2095

Winter 2012 – 2009

Number of drop-in educational advising appointments delivered:

Summer 2011 – 398

Fall 2011 – 383

Winter 2012 – 389

Number of email educational advising appointments delivered:

Summer 2011 – 379

Fall 2011 – 385

Winter 2012 – 380

Total advising appointments:

Summer 2011 – 2832

Fall 2011 – 2863

Winter 2012 – 2778

## **Arts Advice Centre**

Number of scheduled advising appointments delivered:

2010 – 1777

2011 – 1631

2012 – 1471

Number of drop-in advising appointments delivered:

2010 – 1841

2011 – 1513

2012 – 1907

Number of email advising appointments delivered:

2010 – 4056

2011 – 4676

2012 – 6101

Number of phone advising appointments delivered:

2010 – 2219

2011 – 1715

2012 – 1725

Total advising appointments:

2010 – 9893

2011 – 9535

2012 – 11204

## **Student Life**

Number of new students who attended New Student Orientation Fall 2011 – 1079 [191 Chwk, 888 Abby]

Number of new students who attended New Student Orientation Winter 2012 – 116

Number of students who successfully completed the leadership challenge – 12

Number of students who attend the Fall 2011 Leadership Skills Development Conference – 26

Number of attendees at the Fall 2011 Speakers Series – 85

Number of students who attended the Winter 2012 Advocates for Equality Conference – 50

Average number of students who drop in to UHouse per month – 635

Average number of food hampers distributed to students per term – 12

50 families, including 116 children, were given gifts, food hampers, and gift cards for local businesses as part of the December 2011 Angel Tree program.

Student Life hired 22 work study students to assist with New Student Orientation, campus recreation, communications and publications, SOLAR, and events.

## **Career Centre Activity**

Summer 2011:

Number of co-op placements: 33

Number of career events: 4

Number of career appointments: 51

Number of work study students working at the Career Centre: 0

Fall 2011:

Number of co-op placements: 29

Number of career events: 46

Number of career appointments: 63

Number of work study students working at the Career Centre: 6

Winter 2012:

Number of co-op placements: 26

Number of career events: 25

Number of career appointments: 80

Number work study students working at the Career Centre: 5

Number of Work Study students for Fiscal 2011/12: 210

## **Donations**

Total amount of donations received in the 2012 calendar year: \$2.6 million.