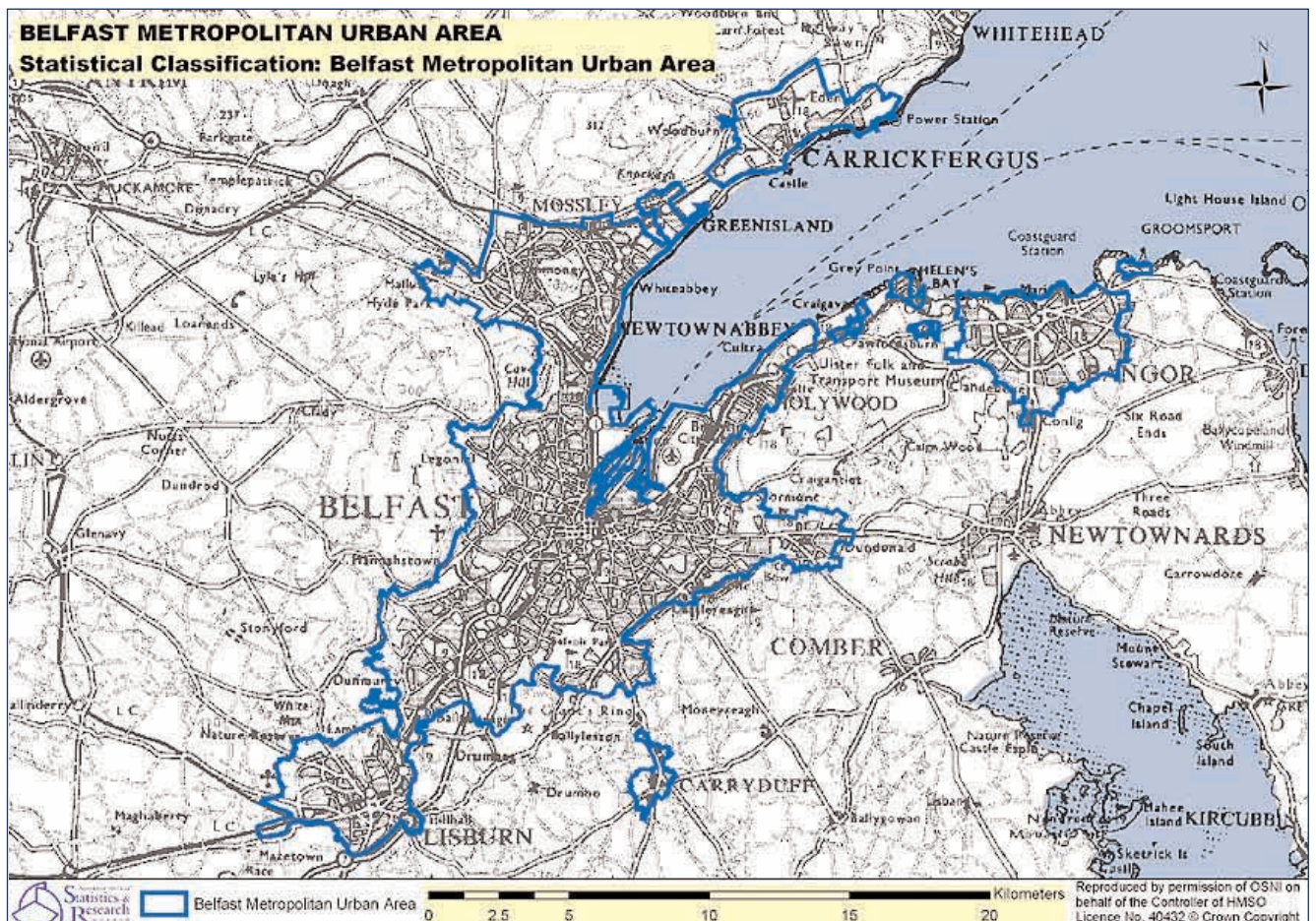


Statistical Classification Band A - Belfast Metropolitan Urban Area

Band A relates to Belfast Metropolitan Urban Area (BMUA) - as well as including Belfast Urban Area, BMUA stretches around Belfast Lough to include Carrickfergus, Greenisland Urban Area, Newtownabbey Urban Area, Holywood Urban Area, Bangor and smaller settlements in between. In addition, BMUA includes Carryduff and Castlereagh and Lisburn Urban Areas.



(c) Crown Copyright Licence No: 40432

Figure 1: Belfast Metropolitan Urban Area

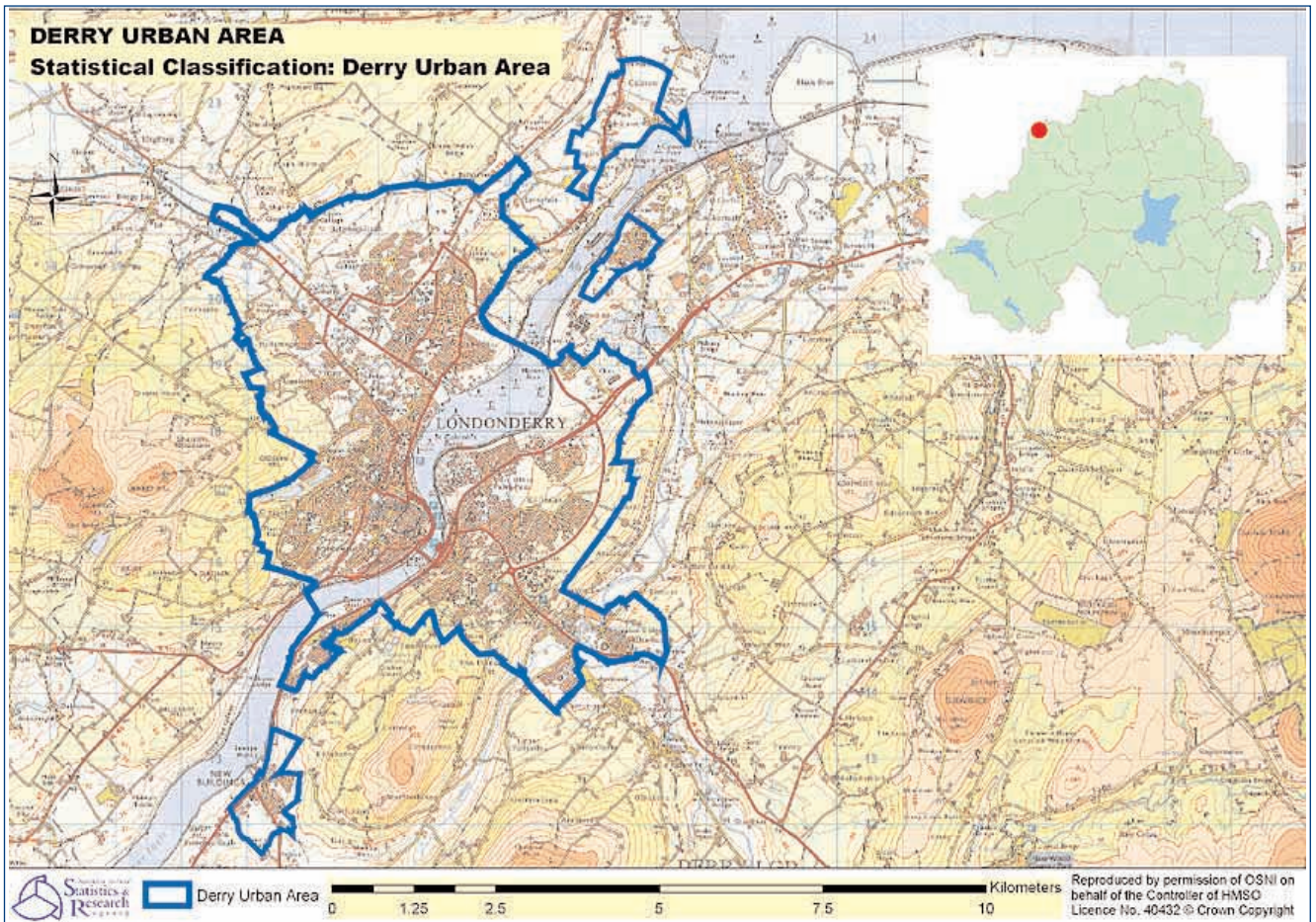
Table 1: Statistical Classification: Band A - Belfast Metropolitan Urban Area

Band	Settlement	Persons (2001 Census)	Household Spaces & Communal Establishments (2001 Census)
Belfast Metropolitan Urban Area			
	Bangor	58,368	24,858
	Belfast Urban Area	276,705	119,589
	Carrickfergus	27,192	11,073
	Carryduff	6,564	2,433
	Castlereagh Urban Area	54,636	23,289
	Greenisland Urban Area	5,067	2,211
	Groomsport & Crawfordsburn ¹	1,401	726
	Helen's Bay	1,356	579
	Hollywood Urban Area	12,027	4,839
	Lisburn Urban Area	71,403	27,474
	Milltown (Lisburn LGD)	1,356	516
	Newtownabbey Urban Area	62,022	25,008
	Seahill	1,179	429
	Belfast Metropolitan Urban Area Total	579,276	243,024

¹ After defining settlements of at least 1,000 people, Groomsport and Crawfordsburn, each with a population of under 1,000 people, represent the remainder of the Belfast Metropolitan Urban Area. They have therefore been amalgamated in this table.

Statistical Classification Band B - Derry Urban Area

Band B relates to Derry Urban Area (DUA) - as well as including the City, DUA includes the neighbouring settlements of Culmore, Newbuildings and Strathfoyle.



(c) Crown Copyright Licence No: 40432

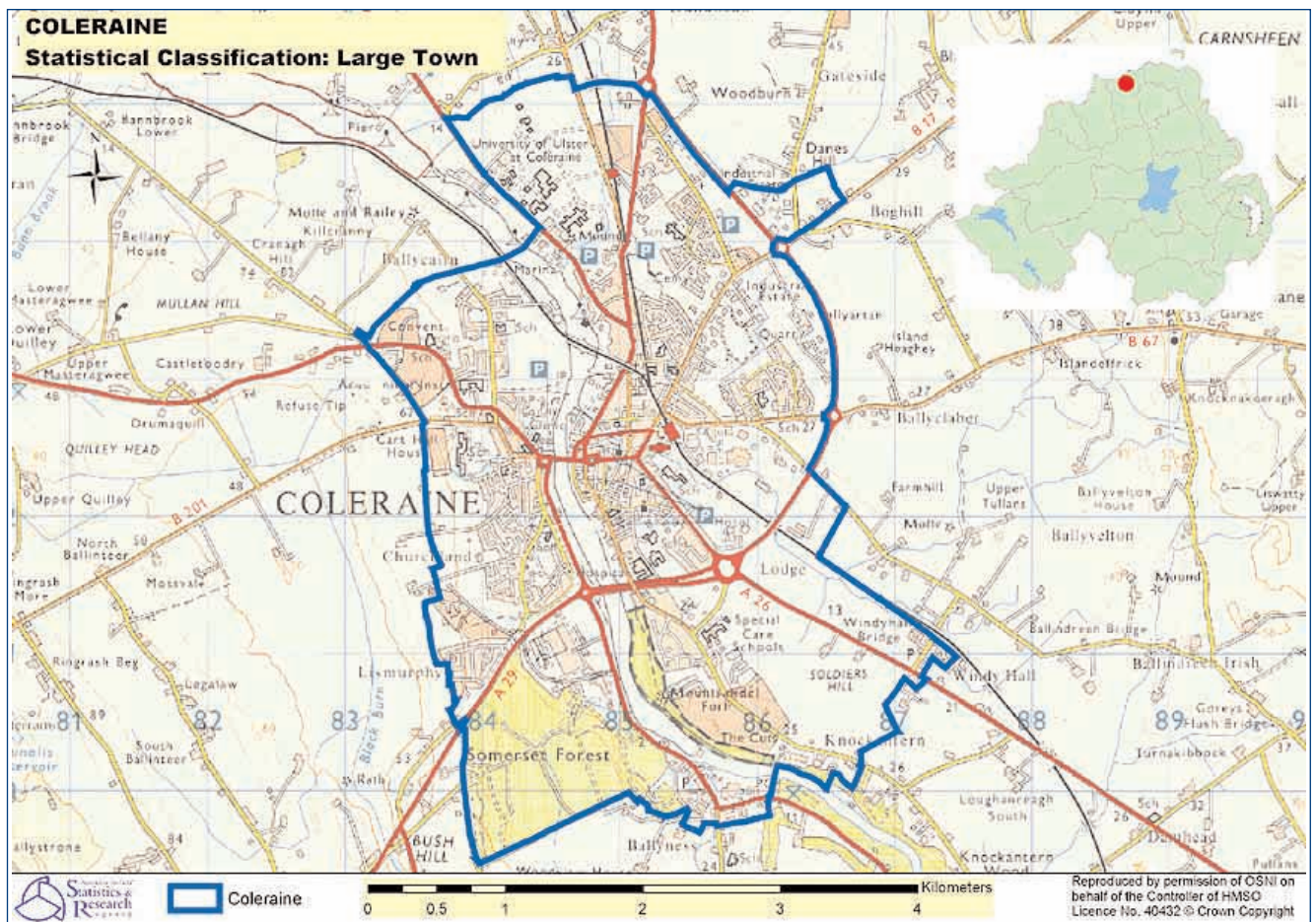
Figure 2: Derry Urban Area

Table 2: Statistical Classification: Band B - Derry Urban Area

Band	Settlement	Persons (2001 Census)	Household Spaces & Communal Establishments (2001 Census)
Derry Urban Area			
	Culmore	2,937	951
	Londonderry	83,652	30,129
	Newbuildings	2,496	858
	Strathfoyle	1,578	582
	Derry Urban Area Total	90,663	32,520

Statistical Classification Band C - Large Town

Band C relates to settlements labeled 'Large Town'. In total there are 8 settlements in this band in Northern Ireland. These range in population size from Craigavon Urban Area to Larne (see table). The definition of a large town is that it has a population of 18,000 people or more and is outside the Belfast Metropolitan and Derry Urban Areas.



(c) Crown Copyright Licence No: 40432

Figure 3: Example map given for Coleraine settlement development limit - further maps of all large town settlement development limits are available at www.ninis.nisra.gov.uk

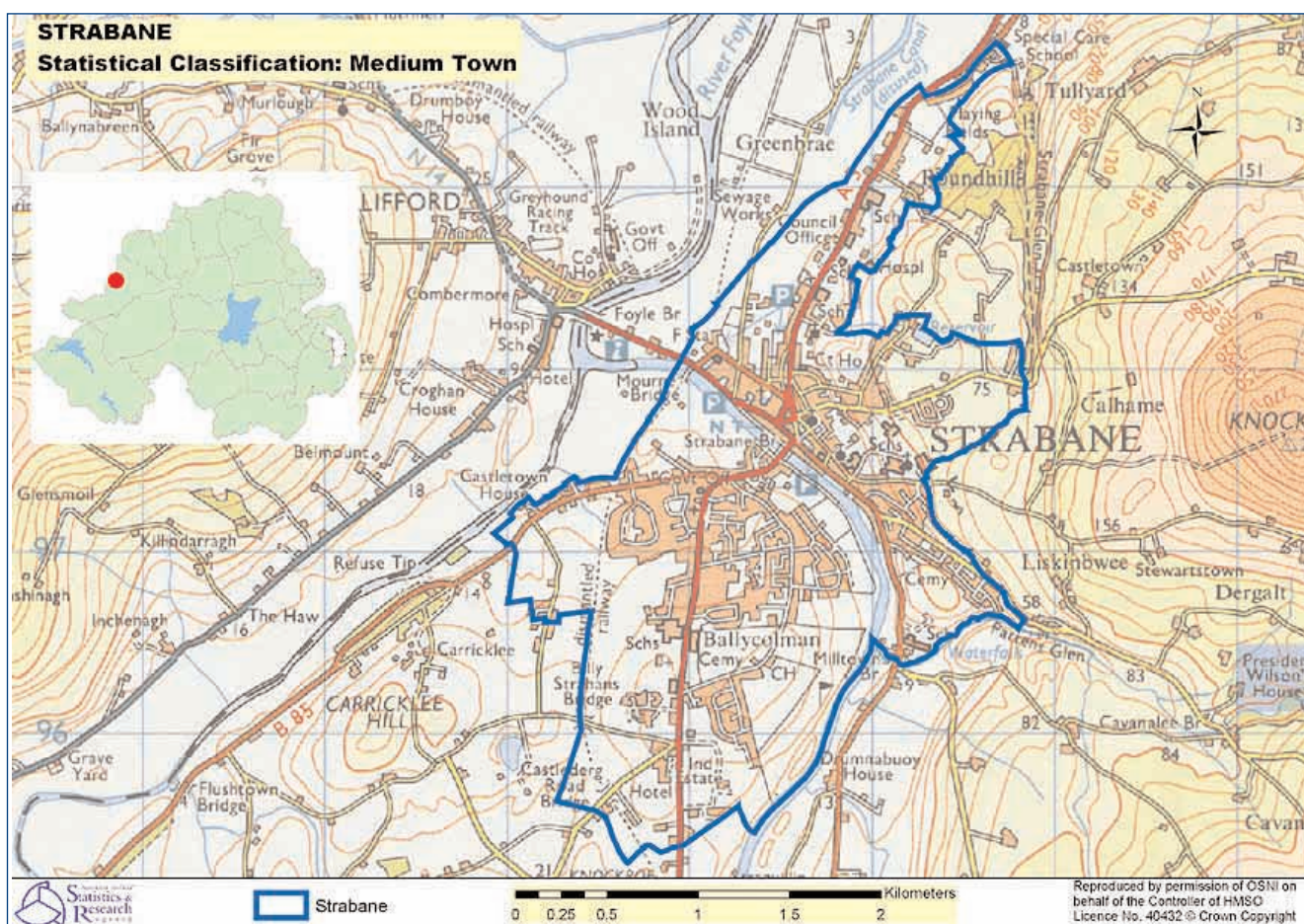
Table 3 Statistical Classification: Band C- Large Town

Band	Settlement	Persons (2001 Census)	Household Spaces & Communal Establishments (2001 Census)
Large Town			
	Antrim	19,986	8,196
	Ballymena	28,704	11,907
	Craigavon Urban Area (Including Bleary)	57,651	23,718
	Coleraine	24,042	9,711
	Larne	18,210	8,205
	Newry City*	27,300	10,314
	Newtownards	27,795	11,502
	Omagh	19,836	7,719
	Band Total	223,524	91,272

* Officially classified as a City. The SDL for Newry City includes the settlement of Bessbrook.

Statistical Classification Band D - Medium Town

Band D relates to settlements labeled 'Medium Town'. In total there are 8 settlements in this band in Northern Ireland. These range in population size from Banbridge to Downpatrick (see table). The definition of a medium town is that it has a population of 10,000 or more people and less than 18,000 people and is also outside the Belfast Metropolitan and Derry Urban Areas.



(c) Crown Copyright Licence No: 40432

Figure 4: Example map for Strabane settlement development limit - further maps of medium town settlement development limits are available at www.ninis.nisra.gov.uk

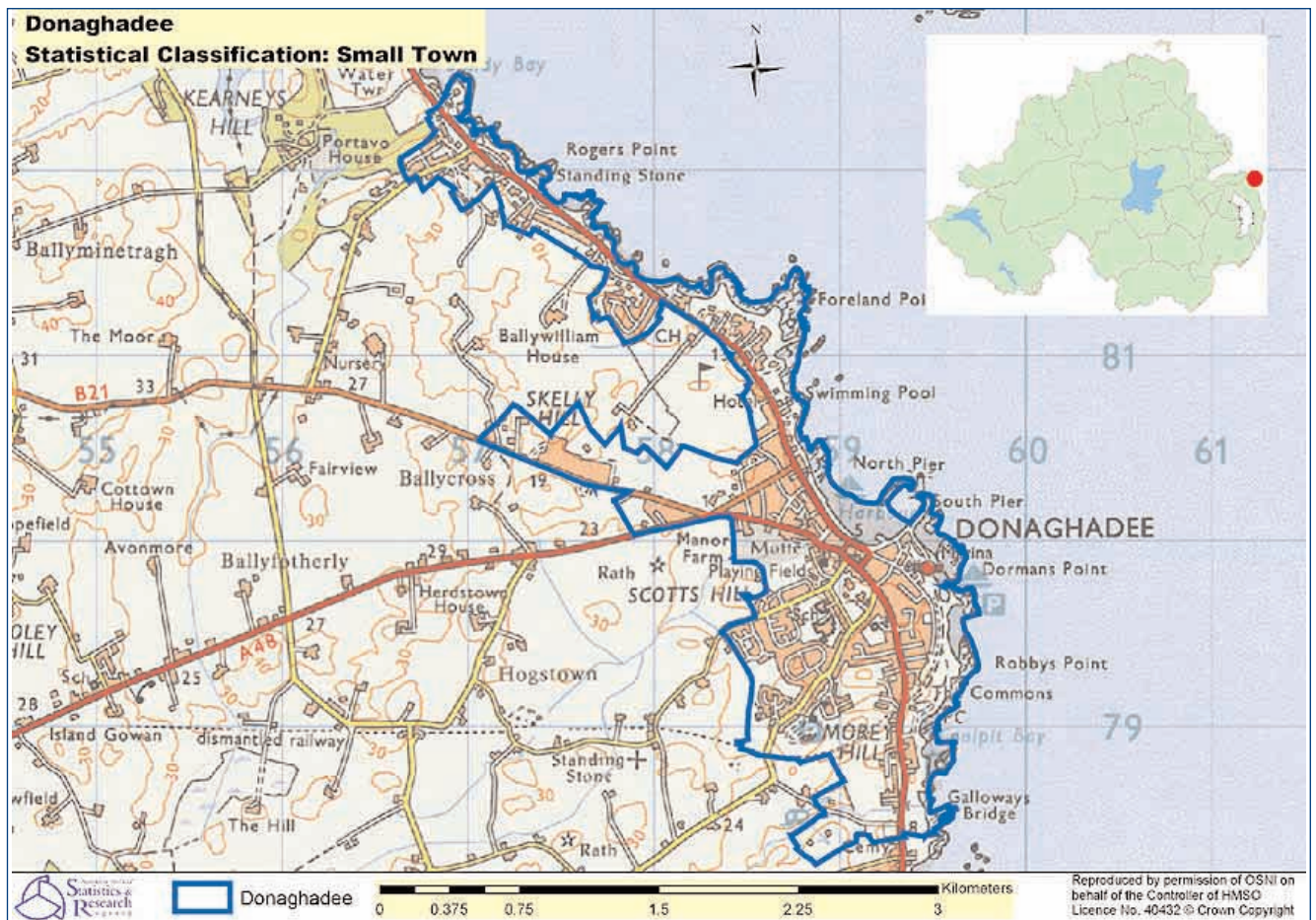
Table 4 Statistical Classification: Band D - Medium Town

Band	Settlement	Persons (2001 Census)	Household Spaces & Communal Establishments (2001 Census)
Medium Town			
	Armagh City*	14,517	5,682
	Banbridge	14,748	5,838
	Cookstown	10,566	4,092
	Downpatrick	10,320	3,690
	Dungannon	10,983	4,494
	Enniskillen	13,560	5,772
	Limavady	12,075	4,575
	Strabane	13,380	4,632
	Band Total	100,149	38,775

* Officially classified as a City.

Statistical Classification Band E - Small Town

Band E relates to settlements labeled 'Small Town'. In total there are 15 settlements in this band in Northern Ireland. These range in population size from Ballymoney to Coalisland (see table). The definition of a small town is that it has a population of 4,500 or more people and is also outside the Belfast Metropolitan and Derry Urban Areas.



(c) Crown Copyright Licence No: 40432

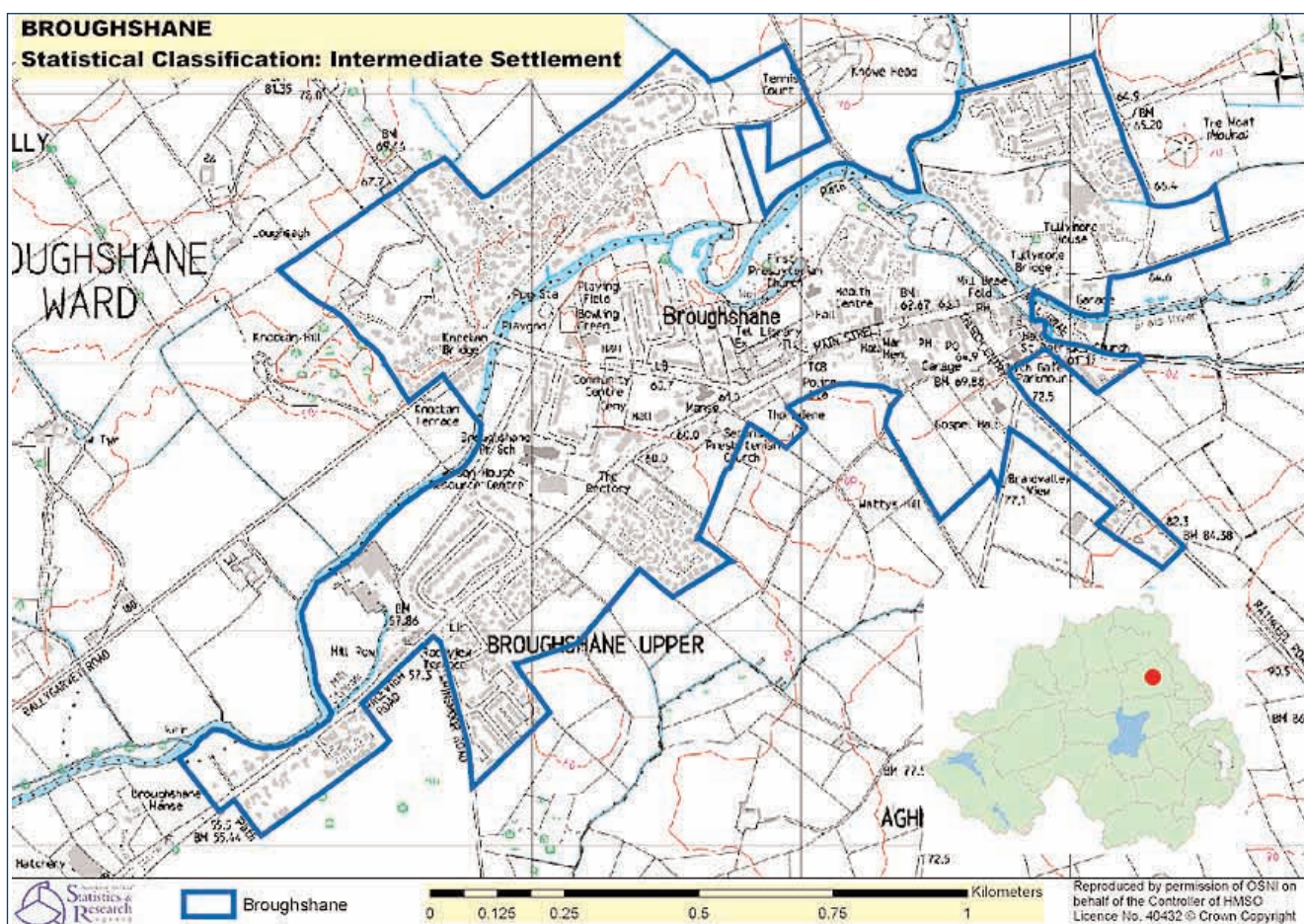
Figure 5: Example map of Donaghadee of settlement development limit - further maps of small town settlement development limits are available at www.ninis.nisra.gov.uk

Table 5 Statistical Classification: Band E - Small Town

Band	Settlement	Persons (2001 Census)	Household Spaces & Communal Establishments (2001 Census)
Small Town			
	Ballycastle	5,073	2,325
	Ballyclare	8,772	3,624
	Ballymoney	9,009	3,726
	Ballynahinch	5,334	2,103
	Coalisland	4,872	1,755
	Comber	8,952	3,627
	Donaghadee	6,474	2,955
	Dromore (Banbridge LGD)	4,959	2,118
	Kilkeel	6,297	2,337
	Magherafelt	8,289	3,075
	Newcastle	7,431	3,255
	Portrush	6,345	3,249
	Portstewart	7,803	4,074
	Randalstown	4,944	1,863
	Warrenpoint	6,981	2,742
	Band Total	101,535	42,828

Statistical Classification Band F - Intermediate Settlement

Band F relates to settlements labeled 'Intermediate Settlement'. In total there are 22 settlements in this band in Northern Ireland. These range in population size from Crumlin to Broughshane (see table). The definition of an intermediate settlement is that it has a population of 2,250 people or more and less than 4,500 people and is also outside the Belfast Metropolitan and Derry Urban Areas.



(c) Crown Copyright Licence No: 40432

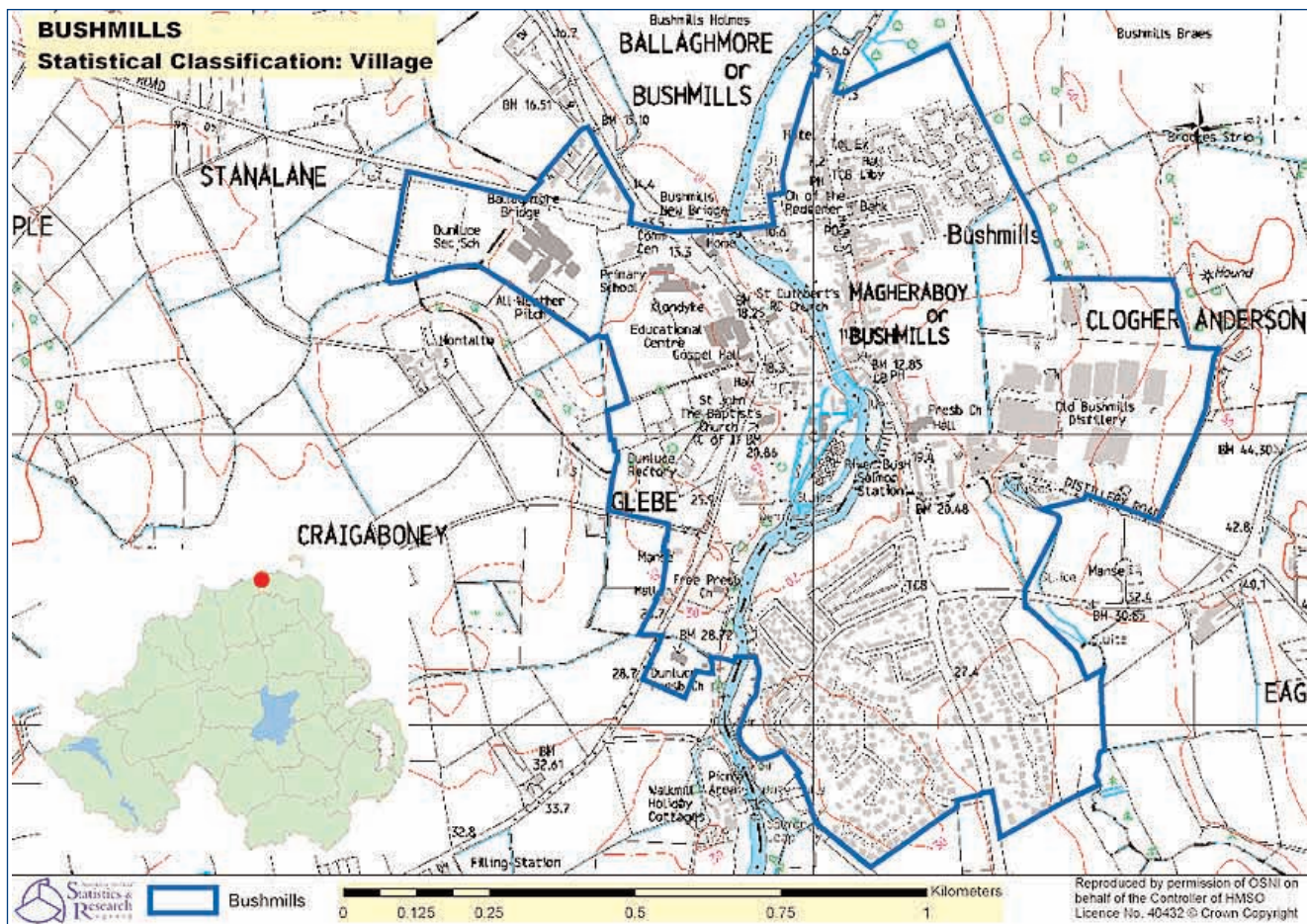
Figure 6: Example map of Broughshane settlement development limit - further maps of intermediate settlement - settlement development limits are available at www.ninis.nisra.gov.uk

Table 6 Statistical Classification: Band F - Intermediate Settlement

Band	Settlement	Persons (2001 Census)	Household Spaces & Communal Establishments (2001 Census)
Intermediate Settlement			
	Ahoghill	3,027	1,194
	Ballygowan	2,670	951
	Broughshane	2,349	969
	Castledearg	2,739	1,056
	Castlewellan	2,367	846
	Crumlin	4,248	1,494
	Cullybackey	2,388	1,062
	Dungiven	2,988	1,020
	Eglinton	3,150	1,107
	Hillsborough	3,396	1,452
	Keady	2,937	1,113
	Killyleagh	2,490	1,005
	Lisnaskea	2,730	1,065
	Maghera	3,648	1,275
	Moira	3,669	1,401
	Portaferry	2,478	996
	Richhill	2,808	1,035
	Rostrevor	2,433	945
	Saintfield	2,955	1,125
	Tandragee	3,018	1,221
	Waringstown	2,523	930
	Whitehead	3,711	1,614
	Band Total	64,722	24,876

Statistical Classification Band G - Village

Band G relates to settlements labeled 'Village'. In total there are 48 settlements in this band in Northern Ireland. These range in population size from Castledawson to Greyabbey (see table). The definition of a 'village' settlement is that it has a population of 1,000 people or more and is less than 2,250 people and is also outside the Belfast Metropolitan and Derry Urban Areas.



(c) Crown Copyright Licence No: 40432

Figure 7: Example map of Bushmills settlement development limit - further maps of all village settlement development limits are available at www.ninis.nisra.gov.uk

Table 7 Statistical Classification: Band G - Village

Band	Settlement	Persons (2001 Census)	Household Spaces & Communal Establishments (2001 Census)
Village			
	Annahilt	1,131	378
	Annalong	1,761	702
	Ardglass	1,659	567
	Ballinamallard	1,326	543
	Ballykelly	1,827	627
	Ballywalter	1,419	657
	Bellaghy	1,071	351
	Bushmills	1,314	654
	Carnlough	1,440	570
	Castledawson	2,085	834
	Castlerock	1,326	699
	Claudy	1,323	474
	Cloughmills	1,224	468
	Cogry/Kilbride	1,167	438
	Crossgar	1,542	588
	Crossmaglen	1,449	525
	Cushendall	1,242	531
	Doagh	1,119	480
	Dollingstown	1,830	693
	Draperstown	1,626	591
	Dromore (Omagh LGD)	1,095	417
	Drumaness	1,269	438
	Dundrum	1,062	501
	Dunloy	1,044	336

Table 7 **Band G - Village (continued)**

Band	Settlement	Persons (2001 Census)	Household Spaces & Communal Establishments (2001 Census)
Village			
	Fintona	1,344	573
	Fivemiletown	1,104	483
	Garvagh	1,278	498
	Gilford	1,548	645
	Glenavy	1,071	354
	Greyabbey	1,002	441
	Greysteel	1,224	429
	Irvinestown	1,797	756
	Kells/Connor	1,737	696
	Kilrea	1,509	579
	Kircubbin	1,218	477
	Lisbellaw	1,041	420
	Maghaberry	1,692	603
	Magheralin	1,134	465
	Markethill	1,290	540
	Millisle	1,791	795
	Moneymore	1,371	546
	Moy	1,209	465
	Newtownstewart	1,467	576
	Portavogie	1,593	672
	Portglenone	1,191	486
	Rathfriland	2,061	855
	Sion Mills	2,073	768
	Templepatrick	1,551	612
	Band Total	67,647	26,796