



Florida State University Game Day Plan 2014

- General Information
- Parking (New Information for 2014)*
- ADA Parking and Assistance
- Game Day Traffic Patterns
- Game Day Tailgating (New Information for 2014)*
- Items Prohibited in the Stadium
- ADA Transportation (Updated for 2014)*
- Concessions and Dining
- Game Day Dining
- The Moore Athletic Center
- Maps of Campus
- Emergency Response Information
- Banner Policy
- Smoking Policy
- ATM Locations
- Special Care Populations
- General Seating for Students (NEW ENTRY INFORMATION FOR STUDENTS)
- Lot 14 Traffic Route – Post Game
- Drone / Personal Aircraft Policy (New for 2014)*



General

The vast majority of FSU fans and visitors conduct themselves safely and appropriately on game day. The increased support and attendance on game days has led to increased safety concerns and managing those concerns while providing a safe environment is the goal of the Florida State University Police Department.

The Game day Game plan will change very little for most FSU fans and will help ensure a safe and fun environment for everyone who comes to a game.

What types of safety concerns do these regulations address?

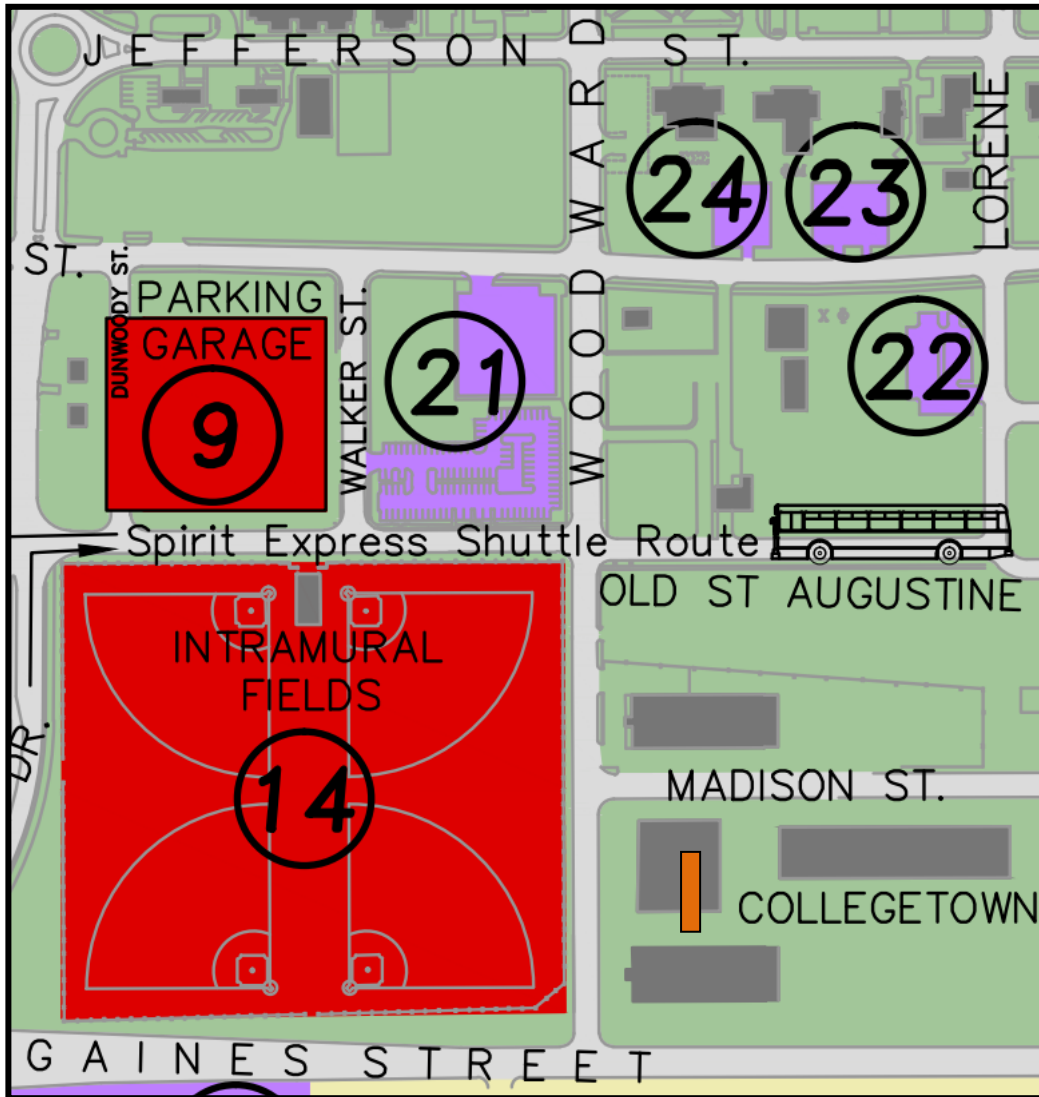
Parking on sidewalks is a good example. When cars are parked on the sidewalk, pedestrians are pushed into the street and into the path of vehicle traffic. This is especially dangerous after games, when 85,000 or more fans are leaving the stadium.

This also makes it difficult for emergency vehicles – ambulances, fire trucks – to respond to the scene if they are needed.

The Spirit Express/Dial-A-Ride (LOCATION) 2014

The Spirit Express and Dial-a-Ride will continue to provide shuttle services but the new parking and pick up location is at parking **garage number 6** located at the corner of St Augustine Street and Walker Street.

(414 Walker Street See Map #9 Location and instructions below)



This service helps fan avoid congested traffic around the stadium and get down to the business of cheering for the Seminoles! Shuttles run beginning 2 hours prior to kickoff and run though 1 hour after the end of the game. Drop off and pick up at the stadium is located at Gate H in the bus loop. There is a nominal fee to park and ride. The Dial-A-Ride Shuttle is wheelchair accessible and is an alternative method of transportation for those fans unable to utilize the FSU Disabled Parking Program.

On campus parking rules are enforced. In the interests of safety, parking on sidewalks, grass, fire lanes, and spaces not specifically designed for parking vehicles is prohibited. Violations of disabled parking are strictly enforced. Student and staff parking permits are not required to park on campus Saturday and Sunday. **Weapons and/or firearms are not permitted to be stored in a vehicle on the FSU campus at any time, including game days.**

Some lots are designated Seminole Booster parking during game day weekends. Persons who are not authorized to park in these designated lots are required to remove their vehicles to a non-Booster lot on the Friday evening prior to the Saturday football game. Parking in a Seminole Booster lot without the required parking lot pass may result in the unauthorized vehicle being towed.

Charter Bus Parking for Football Games

This upcoming football season, Florida State University and Seminole Boosters, Inc., will permit charter buses to park during games.

The fee for this service is \$100.00 per bus, per game. Charter buses may park beginning four (4) hours before kickoff. Buses must depart within one (1) hour of the conclusion of the game.

[2014 Charter Bus Application](#)

Parking Directions

Travel east on US 90 to Call Street; east on Call Street to Stadium Drive; south on Stadium Drive to Spirit Way (Old Connector Road). Take Spirit Way to Chieftan Way. Go south on Chieftan Way. Attendants will park the buses.

Travel east on Pensacola St. to Stadium Drive; north on Stadium Drive to Spirit Way (Old Connector Road). Take Spirit Way to Chieftan Way. Go south on Chieftan Way. Attendants will park the buses.

Exits: All buses must exit east of the stadium on Pensacola Street. Attendants will guide.

Special Permits: A special permit will be issued for school buses that transport high school bands. There will be no fee for this special permit; however, buses must apply for the special permit because it must be displayed on the bus.

2014 MOTORHOME PARKING POLICIES Golden Chiefs, Silver Chiefs, and Tomahawks

[Click here for the 2014 Motorhome Parking Reservations](#)

[Click here for the 2014 Motorhome Parking Map](#)

Parking Contacts:

Platinum & Golden Chief Parking
Motorhome / Basketball Parking

Maria Fuller (Director)
(850) 644-3484
mfuller@admin.fsu.edu

Game Day Parking Director*
James Bird
(850) 645-2533
jbird2@mail.fsu.edu

*On game day if you have a problem please speak with the lot attendant; if it can't be resolved the attendant will contact James Bird.

MOTORHOME PARKING Questions and Answers

Q: What are the benefits of this policy?

A: By allowing motorhome spaces to be reserved rather than given on a first-come, first-serve basis, we are eliminating a traffic build-up along Lake Bradford and Jackson Bluff. Since those with reservations will have already paid for and received an assigned spot, the policy will decrease the time spent waiting in line. Also, it will preserve your ability to park with your friends, and, because you will know where your reserved spot is ahead of time, it will allow you to tell others exactly where to meet you in the lot.

Q: Why aren't towed RV's (5th wheels) permitted?

A: The lot was designed as a motorhome lot only. We have a limited number of spaces in the motorhome lot (approx. 160 spaces). If 5th wheels are allowed, next will be self-contained trailers, pop-up campers, etc. The motorhome lot simply does not have the space to accommodate that kind of demand.

Q: Why can't I reserve a space for the whole season?

A: If we allowed that practice, there would be too many unused spaces due to no-shows. Ultimately, we would be faced with a decision to expand the lot (which is not feasible), or limit the use based on priority (which would result in excluding loyal Boosters who attend every game). By requiring weekly reservations, we expect the lot to be more fully utilized.

Q: What if I forget to get my reservation form in by Tuesday at 12:00 p.m.?

A: You will still have the chance to use the lot. You can show up at the gate and be assigned a space based on what has not been previously reserved. You may pay for the space at the gate by cash or check.

Q: Can I reserve more than one space for other friends who are Boosters if they are at the Tomahawk, Silver Chief, or Golden Chief level?

A: No, each person may reserve only one space per Booster account.

Q: What is the latest I can arrive in the motorhome lot and still receive my reserved parking spot?

A: Two hours prior to kickoff. Any reserved spaces still unclaimed will be released into the first-come, first-serve allotment.

Q: Is there a fee to use the motorhome lot?

A: Yes, the fee is \$75 and may be paid by credit card ahead of time, or by cash or check at the gate. The fee to bring in an additional vehicle is \$15.

Q: Can you keep my credit card on file so I don't have to send it in every week?

A: Yes. Your reservation form has a box for you to check if you would like us to keep your credit card information on file. However, you must still send in your reservation if you plan on attending that particular game.

Q: Can I use a generator?

A: No, we now provide electricity, and, because of the noise and fumes, we do not allow generators in the motorhome lots.

Q: Do I need a special permit to enter the lot?

A: You will need to have your Booster Golden Chief, Silver Chief, or Tomahawk permit on your rearview mirror as well as your motorhome lot permit (issued at the gate) on your dashboard. **All permits must be displayed throughout the entire game.**

ADA Parking and Assistance on Game Day

The Florida State University is committed to a policy ensuring that individuals with disabilities are not discriminated against and that they have equal opportunity and equal access to all the rights and privileges enjoyed by those who are not disabled. The University complies with all applicable federal and state laws, regulations, ordinances, orders, and rules.

In addition to complying with applicable laws, FSU has dedicated disability parking for home football games. These parking spaces are available through an application process due to the high demand during FSU Football games.

The disabled parking spaces are located either adjacent to the stadium or in Parking Garage 6/Lot 9 (Pensacola and Walker St.) An individual assigned a disabled parking space will be mailed information that includes a game-day parking placard(s) and a parking map with directions to assigned space. The placards are non-transferable and remain property of Florida State University.

Every attempt will be made to accommodate each request, but parking assignments are based on a first-come, first-served basis, because of limited allocated disabled parking spaces. An individual who has received a parking placard in a prior year will not automatically receive a parking placard for subsequent years; an application must be completed each year. Any applicant who applies for disabled parking but does not receive a space due to limited availability will be placed on a waiting list in the order that the request was received. At the time a space becomes available, the applicant will be promptly notified. Those not assigned a disabled parking space in Parking Garage 6 can take advantage of additional disabled parking at Parking Garage 5 (Copeland and St. Augustine) and ride the Dial-A-Ride accessible shuttle for a nominal fee.

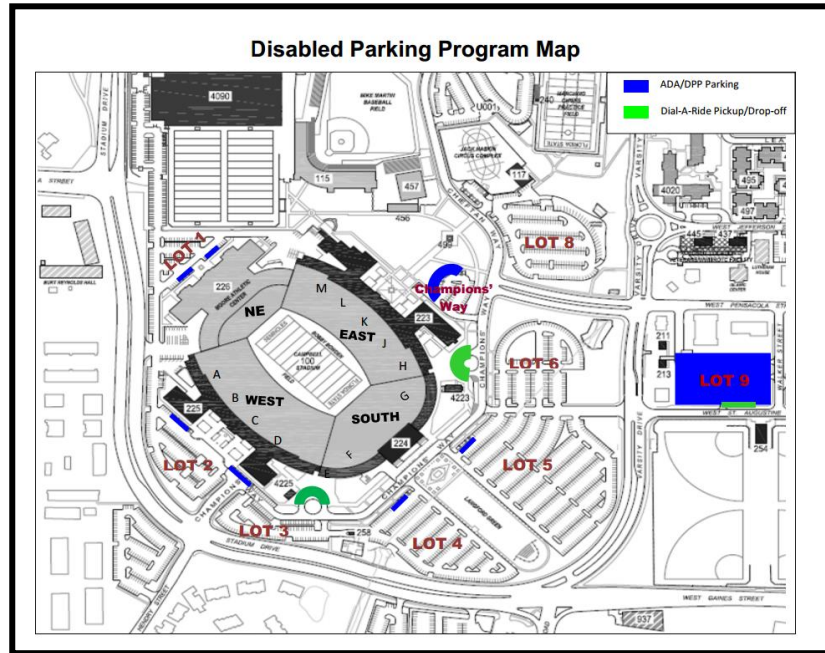
An individual who receives a parking location as a part of their Booster package must choose either their Booster location or the disabled parking location, but not both. Selecting disability parking will cancel the Booster-allocated parking.

Football Ticket Information: don't forget to request seating accommodations, if needed.

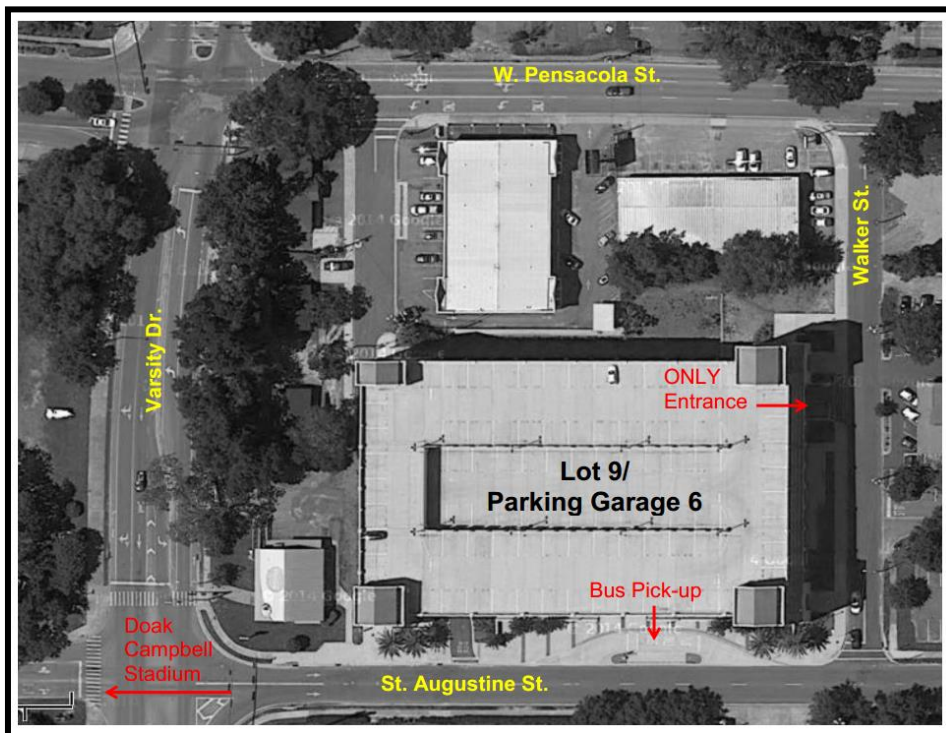
ADA Parking (continued)

- [2014 Welcome, Rules & Procedures Letter](#)
- [2014 Disabled Parking Program Application](#)
- [Unreserved Offsite ADA Parking](#)
- [Parking Lot Map](#)

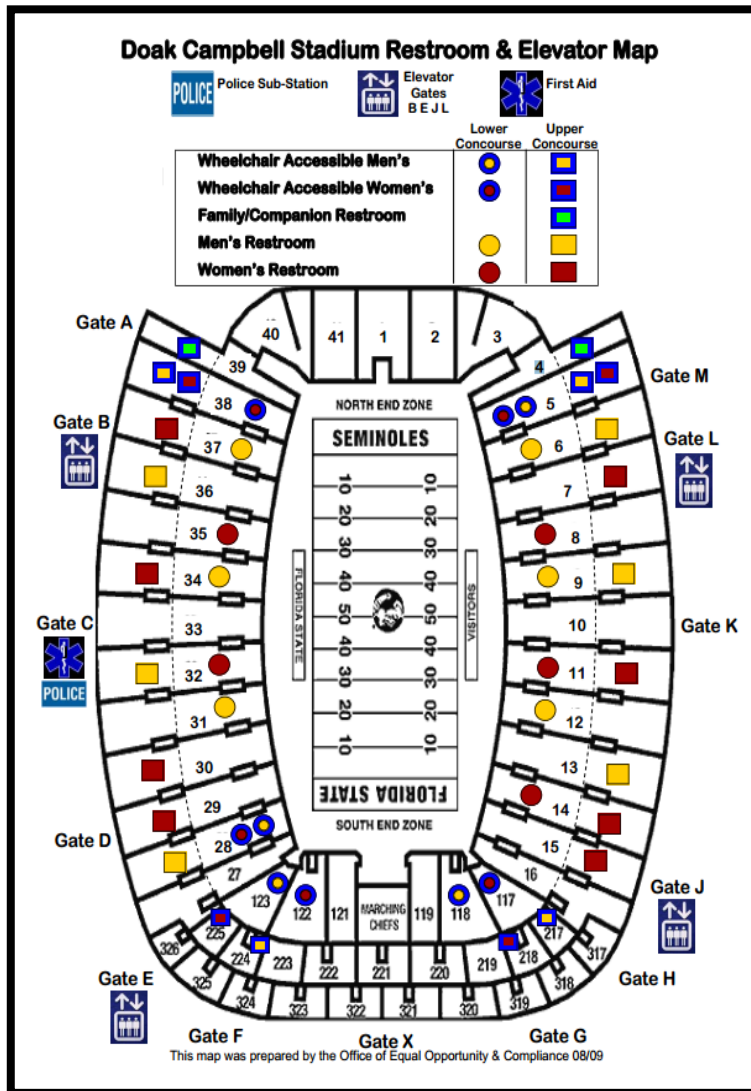
[Disabled Parking Program Map](#)



[Lot 9 Map](#)



Stadium Restroom & Elevator Map



The company contracted to provide additional shuttle rides for the 2014 season is the Gotcha Group.

ADA Parking and:

Disabled Parking and Assistance:

Disabled parking can be requested in advanced by submitting an application to the FSU Disabled Parking Program. Applications are available online at, <http://compliance.hr.fsu.edu/disabledparking>. Applications will be processed as late as 2:00 pm the Friday before each game.

1. Participants must have a valid (blue or red) Department of Motor Vehicles (DMV) issued disabled parking placard.

2. Disabled Parking spaces for the home football games are assigned on a first-come-first-serve basis, determined by the date/time receipt of a completed request packet. This policy ensures fairness for all participants, without regard to the severity of an individual's disability or their affiliation to FSU. (NOTE: in the past all spaces have been allocated within the first 30 days after applications were mailed out.)

3. Incomplete request packets will not be processed by DEO. A completed request packet consists of: (1) an application (indicating the games you are attending, parking preferences, if any); (2) a copy of your disabled parking placard; and (3) a copy of your vehicle registration.

4. If a participant is assigned two spaces, one through the Boosters and the second through the Disabled Parking Program, the Boosters will reassign the Booster-allocated parking placard to another Booster member.

5. The individual assigned the Disabled Parking placard must be in attendance at the football games in order to use the disabled parking space

PROCEDURES:

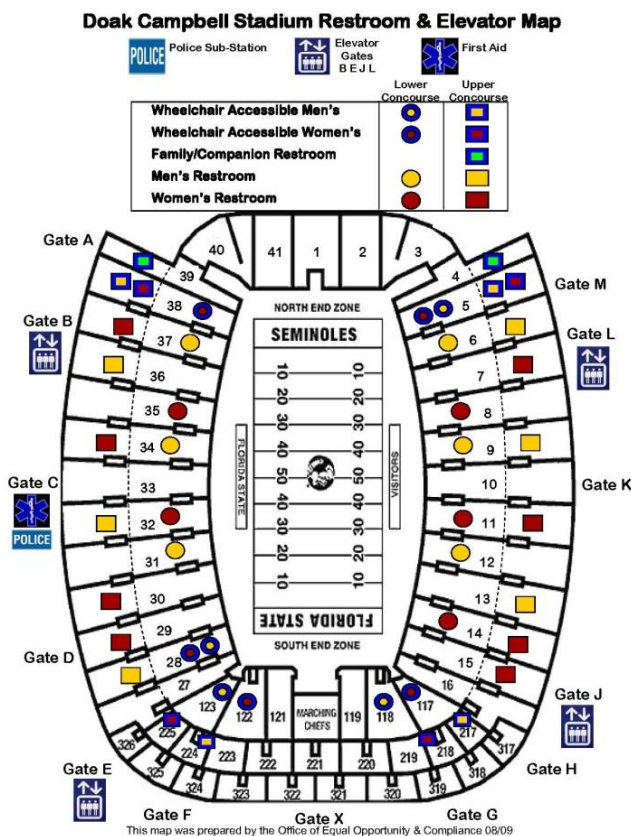
- 1) Complete the application: (http://diversity.fsu.edu/index.cfm?page=disabled_parking):
 - a) Check all boxes that correspond with each home football game you plan to attend.
 - b) Check whether you need an accessible van space.
 - c) If known, indicate a preferred parking space (DEO will make every effort to accommodate special requests).
 - d) Provide a copy of your disabled parking placard.
 - e) Provide a copy of your vehicle registration.
- 2) Return a completed Request Packet via:
 - a) Email: Scan all information and send to amwagner@admin.fsu.edu; or,
 - b) Fax: 850/645-9504. (please include cover page with contact information); or,
 - c) Mail: Office of Diversity & Equal Opportunity

Complete information is available by contacting the Office of Diversity and Equal Opportunity, (850) 645-1458 or amwagner@admin.fsu.edu. (Amber Wagner)

ADA Transportation at the Game: If you have registered with the ADA Program and you need assistance on game day please call: 850-644-1980

STADIUM ACCESSIBILITY

All stadium gates are accessible. Elevators can be accessed from Gates B, E, J, and L. Wheelchair-accessible rest rooms are located by Sections 4, 5, 38, and 39 on the lower level and Sections 4 and 39 on the upper level. See the corresponding map on this page. Lower-level wheel chair-accessible seating is available in Sections 10 and 11 of the East stands. Upper-level wheelchair-accessible seating is available in Sections 4, 5, 38, and 39 in the North end zone and in Sections 16, 117-123, and 27 in the South end zone. Contact the Ticket Office for seating assignments at (850) 644-1830.



Golf Carts:

Golf carts will be available for disabled parking patrons before and after each game. The golf cart service will begin approximately three (3) hours prior to kick-off and continue one (1) hour after kick-off. Service will resume approximately thirty (30) minutes prior to the end of the game and continue one (1) hour after the end of the game.

Specific information on pick-up and drop-off locations will be made available closer to the first game day.

Personal golf carts are prohibited. An assigned decal must be affixed to the golf cart on game day for authorized operation. Unauthorized golf carts will not be permitted to operate on campus on game day.

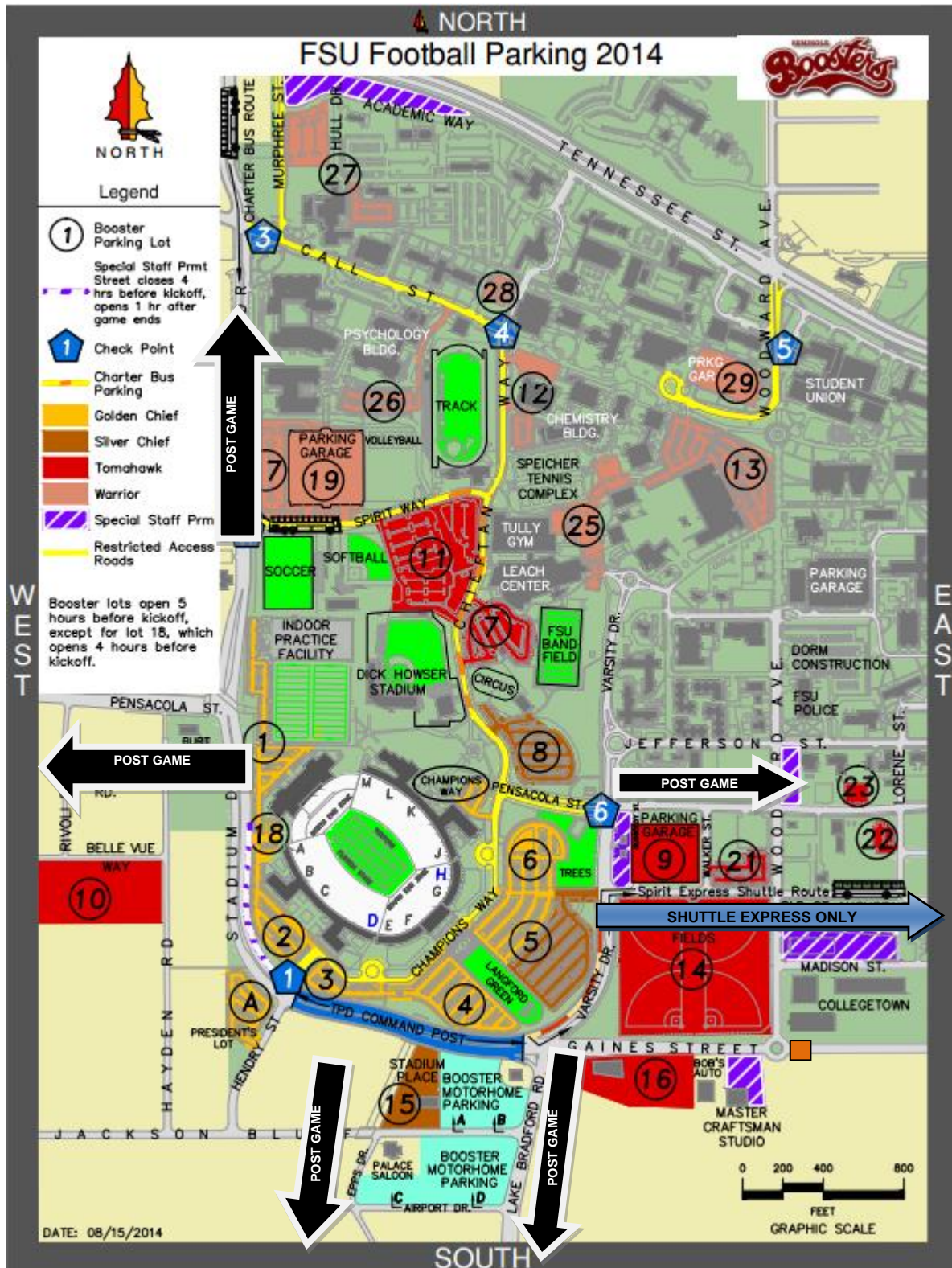
Game Day Traffic Patterns

Four ½ hours before game time the Tallahassee Police Department will modify traffic patterns approaching the Doak Campbell Stadium. St. Augustine Street will be modified as a two-way street for the Spirit Express, and Stadium Drive, Jefferson Street west of Woodward, and Pensacola Street west of Macomb Street, will be modified to allow inbound traffic only to the stadium and ADA parking on Stadium Drive.

After the game, the Spirit Express route will remain active, and Stadium Drive, Pensacola Street, Gaines Street, Jefferson Street, and St. Augustine Street will be modified for outbound traffic.

All fans are reminded to plan ahead and arrive early to ensure you arrive in time for kickoff. Remember to be patient – law enforcement will work hard to facilitate your arrival and departure from the game.

POST GAME TRAFFIC PATTERN



Tailgating

As detailed in the FSU Alcohol Policy “tailgating” are gatherings occurring in the designated parking areas surrounding the area of Doak Campbell Stadium prior to and after scheduled football games.

- (a) Florida State University does not support or condemn the consumption of alcohol by individuals 21 years of age or older at tailgate events.
- (b) Florida State University does not condone any act related to excessive consumption of alcohol that impairs, interferes, or endangers the safety or enjoyment of anyone attending these events, including the individual who chooses to consume alcohol.
- (c) Individuals who choose to consume alcohol are responsible for their behavior and should not operate a motor vehicle after they have consumed alcohol.
- (d) The use of charcoal at tailgating activities on campus is strongly discouraged.
- (e) Tailgating: locations not reserved for booster operations (parking or traffic control) are on a first come first served basis. Tailgate locations cannot disrupt pedestrian traffic on sidewalks or violate university rules or state laws for safe operation.

How is alcohol consumption managed on game days?

Legal and responsible consumption of alcohol is allowed on campus on game days other than in the family-friendly (Bobby’s True Seminole Tailgate) in the Wildwood Plaza near Wildwood and Ragans Residence Halls. Please note the university police works in conjunction with local and state law enforcement such as the Leon County Sheriffs Office, Tallahassee Police Department, Alcohol Beverage and Tobacco and the Florida Department of Law Enforcement. Underage alcohol consumption laws are enforced and violators are subject to arrest.

NEVER DRINK AND DRIVE. The Leon County Multi-Agency DUI Strike Force patrols during game day weekends to strictly enforce Florida’s impaired driving laws. The message is simple – Over the Limit, Under Arrest.

Alcoholic beverages are not allowed inside Doak Campbell Stadium. Certain enclosed areas surrounding the stadium (i.e. University Club, Skyboxes, etc) do allow alcoholic beverages; however, these may NOT be brought into the patron seating area in the stadium or under the bleachers. Persons willfully violating this rule will be politely directed to leave the game. Persons who attempt to conceal alcoholic beverages in order to bring them into the stadium will be ejected from the game.

Prohibited Items in the Stadium

All ticket holders and their belongings may be searched upon entry into stadium. If ticket holders elect not to consent to the searches they will be denied entry into the stadium without refund.

PROHIBITED ITEMS

- Alcohol or illegal drugs
- Weapons or explosives
- Umbrellas
- **Food or beverage from outside the stadium**
- Coolers or containers, including cans, cups and bottles
- Bags larger than 12" x 6" x 12"
- Backpacks
- Chairbacks **with arms** or larger than a single seat
- Artificial noisemakers (whistles, bells, air horns, etc.)
- Video equipment, tape recorders, cameras with lenses longer than 6"
- Sticks, poles, flags or signs
- Laser pointers
- Laptops
- Pets (except special service animals)
- Strollers
- Skateboards
- Beach balls or other airborne objects

Additional items may be prohibited at the discretion of the law enforcement officials as dictated by increased threat conditions.

There are no provisions to check/store prohibited items at the gate.

See Diagram Below for Additional Information

REMINDER FOR YOUR GAME DAY SAFETY

Florida State University asks fans to bring only approved items to Doak Campbell Stadium on game days.



APPROVED ITEMS



EMPTY



WITH APPROVED DECALS



12"

6"

NO INTERNAL POCKETS



PROHIBITED ITEMS



12"+



For more information on Game Day guidelines, visit police.fsu.edu.



SEE SOMETHING, SAY SOMETHING.

Call 850-645-JERK (5375) or text keyword:
'FSU FAN' and message to 35842.

Courtesy Bag Size Devices

To help fans minimize inconveniences on game day multiple bag seizer devices (see below) have been made available for fans entering the stadium. The sizers will be strategically placed near the main parking areas leading to the stadium entrances as well as at each gate entrance that permits bags. The devices are similar to the Airline Carry On Bag Sizers which are used to ensure proper bag limits are followed. The FSU ROTC Department Cadets will assist with operating these devices before the start of the football game. Please take advantage of this service if you have questions about your bag size (12X6X12).



**Bag Sizing Box
12X6X12**



**Bag Sizing Box
12X6X12**



Approved Item



Approved Item



Prohibited Item

Tents and Tailgating in Seminole Booster Lots

Tailgating is fast becoming a time-honored tradition at Doak Campbell. While we encourage you to have a good time, please act responsibly. Fans utilizing booster parking lots are permitted only one parking space per vehicle. We ask you to minimize your tailgating space to permit free movement of vehicle and pedestrian traffic. Lots will open five hours prior to kick-off. No one is allowed to setup a tailgating site prior to the five-hour opening.

Tents, tables, tarps, or canopies **are not** permitted in areas that impede foot or vehicular traffic or if they extend into an adjacent parking space.

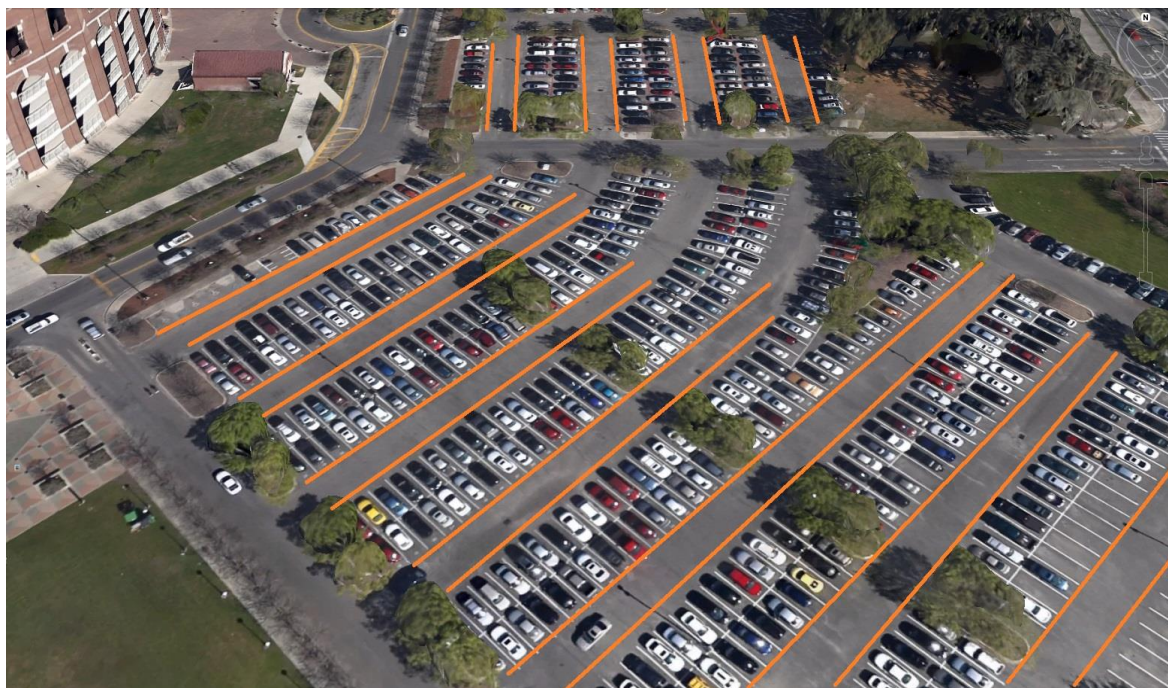
SPECIFIC GUIDELINES

Saving spaces for other motorists is not permitted.

Keep Travel Lanes Open - Vehicles must be given ready access to parking spaces. Tents, tables, and other tailgating items cannot obstruct travel lanes. Safety of tailgaters and emergency vehicle access represent our top priorities.

Tailgating Restriction Lines (New for 2014)*

Boosters are asked to restrict all tailgating activities within the new restriction lines that have been painted for booster lots 1-6. (See Image)



Oversize Vehicles

An oversized vehicle is defined as being more than 18 feet long and 7 feet in width. There is motor home parking available for boosters by reservation

Smaller Motorized Vehicles

Golf carts, mopeds, scooters, ATVs and go-carts are not permitted in booster lots unless specifically authorized.

Tents

Size: 12' by 12' is maximum size permitted in order for movement in an emergency it cannot be staked to the ground. Tents must be made of a fire-retardant material.

Parking lot: Must be set up in a location that does not take another fan's parking space or in any way impede pedestrian or vehicle travel lanes.

Sidewalks: Sidewalks must be left open for pedestrians. Grass area between parking stall and sidewalks may be used for tailgating.

During game: Tents are not to be left unattended during game. They should be taken down before entering the stadium.

Tents Purpose: must be for fan entertainment only. **No commercial business** or display may be made without prior approval from Seminole Booster Inc.

Food/Trash Disposal

Do Not Dump Hot Coals in trash receptacles or on parking lot grounds. All tailgating material and refuse should be disposed of in a safe manner.

Responsible Behavior

The Parking lot is not a playground. For the safety of neighboring fans, the tossing of flying objects, Frisbee, ball playing etc. is prohibited. Similar activities involving skateboards, scooters, roller blades, bike riding, live bands, and excessively loud music are prohibited.

Soliciting

Any soliciting, selling, or free distribution of articles in parking lots without Seminole Booster approval is prohibited. Violators are subject to trespass or arrest.

Emergency Response

The FSU Police Department, local law enforcement partners, and other emergency management professionals go through great lengths to ensure the safety of game day patrons before, during, and after the game. In the event of an emergency during the game, officials have the capability of communicating with fans through the stadium public address system, the main video screen, televisions located near vending locations within the stadium in addition to other means of communication using the FSU Alert Emergency Notification System. Instructions will be given to fans regarding evacuation orders, or other information that may convey important emergency information. Fans should at all times carefully listen to instructions and follow them. Law enforcement officers and other public safety

professionals are provided with emergency instructions and training to assist in the event of a major emergency.

For general law enforcement and medical needs, the stadium is fully staffed with law enforcement officers and medical professionals. Some important numbers to remember are:

Stadium Police Sub-Station: 644-1980

SEE SOMETHING, Say Something: Part of a nationwide initiative to make all sports venues safer is the SEE SOMETHING, SAY SOMETHING campaign. Fans are encouraged not to ignore anything suspicious but rather to realize that safety matters in Doak. If you see something unusual text keyword 'fsufan' and message to 35842.

Report Unruly Fans – 645-JERK (5375) or text keyword: fsufan and message to 35842
Emergencies Inside and Outside the Stadium – 911

Main Line Campus Police – 850-644-1234

Main Line Tallahassee Police – 850-891-4200

Contact the Stadium Police Substation to report any police or medical emergency. Note that the Tallahassee Fire Department also assigns firefighters to the game for fire and rescue emergencies.

Law enforcement officials operate strategically located cameras to allow for monitoring of events and activities taking place in and around the stadium. These sophisticated devices are able to view large areas, or zoom in on individuals who may be causing disturbances. Please note that when officers are called to an area in the stands, cameras are trained on the area to monitor and record activities.

Weapons

Weapons are prohibited on the Florida State University Campus at all times including football games. Fan may not store firearms or other weapons in their vehicles parked on campus while attending the game. Possession of a firearm or weapon on the FSU campus constitutes a felony and violators are subject to arrest pursuant to Florida Statute 790.115.

Alcohol

As previously mentioned, alcoholic beverages are not allowed inside Doak Campbell Stadium. Certain enclosed areas surrounding the stadium (i.e. University Club, Skyboxes, etc) do allow alcoholic beverages; however, these may NOT be brought into the patron seating area in the stadium or under the bleachers. Persons willfully violating this rule will be politely directed to leave the game. Persons who attempt to conceal alcoholic beverages in order to bring them into the stadium will be ejected from the game. Persons under 21 years of age who are in possession of an alcoholic beverage, or persons who willfully supply alcohol to persons under 21 years of age are subject to ejection from the game and arrest.

Drugs/Contraband

The possession of illegal drugs is a violation of Florida law and is strictly enforced on the FSU campus. Persons who are in possession of illegal drugs are subject to arrest by police.

Use of Student Identification

Persons who are not FSU students may not use another person's FSU Student ID to gain entry to the game with a student ticket. Student tickets are for the exclusive use of FSU students with their assigned identification card. Students may not lend their student identification to another person to allow that person to enter the stadium with a student ticket. Unlawful use of student identification for this purpose is a violation of the FSU Student Code of Conduct as well as Florida law. Persons who are found in violation are subject to referral to the Dean of Students Office and/or arrest. In the event that an ID is being used for unlawful purposes, it will be confiscated by law enforcement.

Persons who are in possession of a student ticket may upgrade the ticket at the stadium ticket office, after which they may enter and enjoy the game.

Other Prohibited Activities

- Body passing – this activity is very dangerous due to fall hazards
- Throwing Beach Balls in the stands, etc – these will be confiscated by game staff.
- Unruly or offensive behavior – we all want to cheer for the Seminoles, but please keep behavior fun and in the spirit of good sportsmanship.
- Fighting is not tolerated

Ticket Disputes

From time to time, there is confusion over seats associated with tickets. Normally, this is merely a misunderstanding. If a ticket/seat dispute cannot be resolved, please contact the nearest Event Staff person or law enforcement officer for assistance.

ATM Locations:

An ATM machine is available outside of the University Center Building B (across from the "Unconquered" statue) and 7 ATMs are available inside the stadium.

Lower Concourse

- Lower East - Gate L - Section 5
- South Endzone -Gate X - South Endzone
- Lower Gate D - Section 28-29

Upper Concourse

- Upper East - Near Section 10
- Upper South East -Near Section 318-319
- Upper South West - Near Section 29
- Upper West - Near Section 33

Concessions and Food

A wide array of concessions are available inside the stadium during game time. These include, to name a few, burgers, pizza, pretzels, ice cream, sodas, coffee, sports drinks, water, hotdogs, nachos, and more.

Game Day Dining

The following locations are scheduled to be open during game days:

Location: Suwannee Room (East side of campus; located in the William Johnston Building)

Time: 10:30am-7:30pm

Location: Fresh Food Company (West side of campus; on Call Street next to Salley Hall and across from the Medical School):

Time: 10:30am - 7:30pm

Location: Chili's (Oglesby Union):

Time: 10:30am - midnight

Location: Subway Café (Oglesby Union):

Time: 10:30am - 10:00pm

Location: Starbuck's (Strozier):

Time: 10:00am - 5:00pm

Location: Denny's All Nighter (Woodward Avenue and Parking Garage #2):

Time: Open 24 hours

Want to have your tailgate catered? Leave the food to us – Seminole Dining

Visit <https://seminoledining.catertrax.com/> to place your order, or call (850) 644-7509

*These hours are subject to change without notice. Please visit www.seminoledining.com for more information

The Moore Athletic Center

The Coyle E. Moore Athletic Center, completed in 2004, is the home of FSU Athletics and Seminole Productions, an auxiliary of the College of Communications. Covering 163,000 square feet of office, classroom, training, and presentation space, Moore is also home to the FSU Athletics Hall of Fame. The Center is located between Gates A and M at Doak

Campbell Stadium. The Moore Athletic Center closes to the public two hours prior to game time. Come by before the game and enjoy learning about the FSU's rich athletic traditions which forward the university's "Unconquered" spirit both on and off the field!

[Map of Florida State University \(Click here\)](#)

Banner Policy

- A. All banners must be in good taste and not contain grotesque or suggestive expressions that reflect negatively upon Florida State University.
- B. Banners cannot cover any existing signs inside the stadium.
- C. Banners are not permitted on the overhang areas.
- D. Flags, Banners, or Poles will not be allowed in the seating area of the stadium.

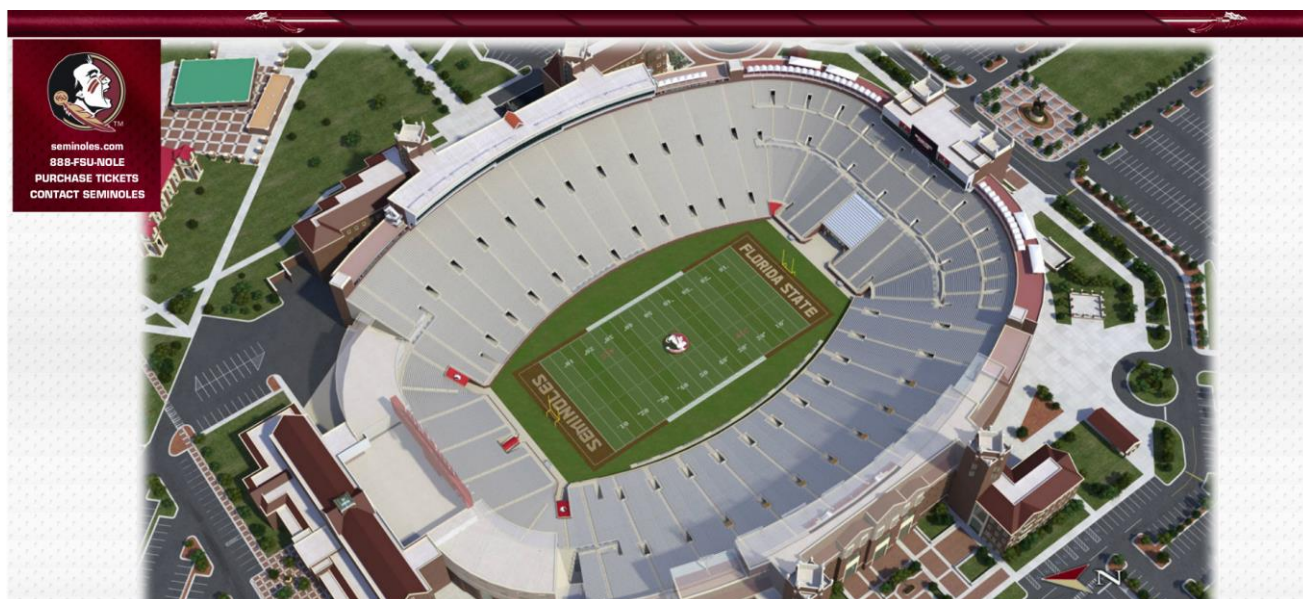
Smoking Policy

Smoking is prohibited in all areas of Doak Campbell Stadium with the exception of the designated smoking areas located at **Gates B and L** ground floor and the open air decks.

Special Care Populations

Wristbands will be made available in the Police Substation (located at Gate C) that can be adhered to the wrist of special care individuals. This wristband will assist law enforcement and first responders in the event the individual is lost. Responsible persons can write on the wristbands any emergency contact information they deem necessary. This is a free service.

General Seating Map [\(link\)](#)



Student Ticketing Information [\(link\)](#)

All Student Tickets Are General Admission (New for 2014)*

Student Ticketing Information

Priority point benefits for Student Booster members.

1. Join Seminole Student Boosters
2. Activate your student account on www.Seminoles.com when the ticket office sends you an e-mail closer to football season.

See below for more information regarding the student ticketing procedures.

Basketball - **More Info (Coming Soon)**

All other sports require FSU Student ID but no ticket

FSU Spear-It Rewards Program

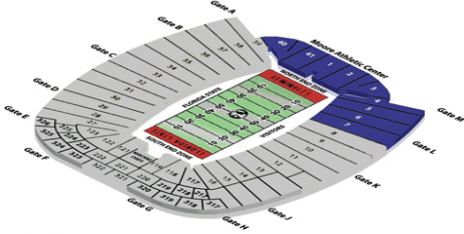
We are proud to announce the launch of our new student loyalty program. Students will receive points based on their class standing* and they will have an opportunity to acquire more points by joining the Student Boosters and also by attending other sporting events and activities. [Read More on Seminoles.com](#)

Points will be assigned as follows:

Seniors & Graduate Students	20 points
Juniors	15 points
Sophomores	10 points
Freshmen	5 points

Additional points that can be acquired are:

Seminole Student Boosters	10 points
Other activities	points as assigned



All Student Tickets Are General Admission

* class standing determined by using the scale in the latest Florida State University General Bulletin

City of Tallahassee Gaines Street Project



As part of the Gaines Street Improvement plan, Gaines Street has been rebuilt from a 2-way, 4-lane road to a 2-way, 2-lane street, with limited on-street parking from Woodward Avenue to Monroe Street. The work along Gaines Street is part of the City Commission's goal to create an 18-hour, pedestrian friendly downtown. Due to the revitalization project patrons parking in lot 14 will be routed after each home game for the 2013 season. Patrons will travel south on Gaines Street to Lake Bradford. Patrons attempting to travel to the north side of Tallahassee can take one of the following routes:

- South on Lake Bradford Road to Orange Avenue(East) to North Monroe Street
- South on Lake Bradford Road to Orange Avenue (West) to Capital Circle (SW)

Patrons attempting to travel to Interstate 10 should take

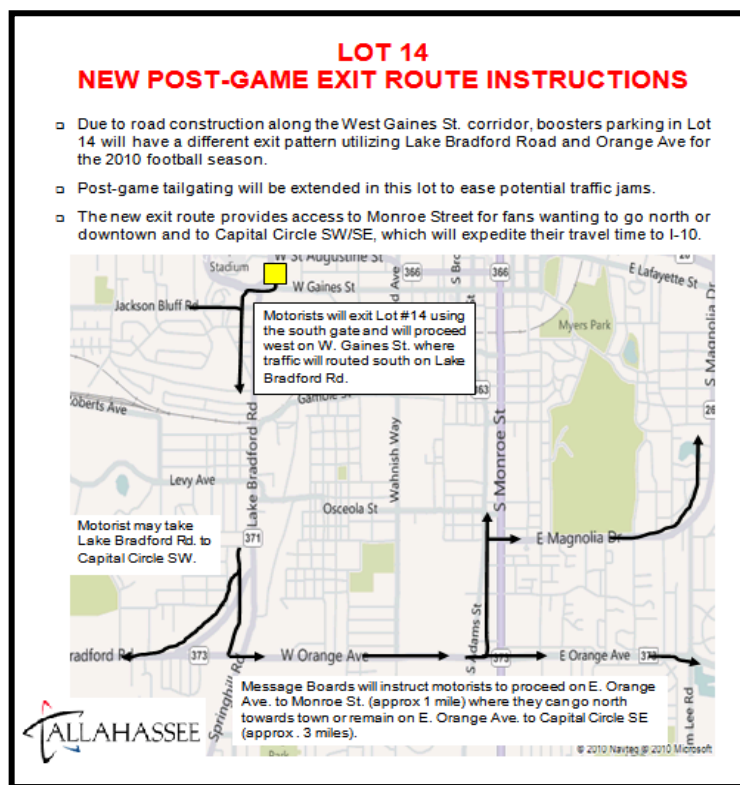
- South on Lake Bradford Road to Orange Avenue (West) to Capital Circle (SW) to Capital Circle (NW) to Interstate 10

Patrons attempting to travel to State Route 20 (Panama City) should take

- South on Lake Bradford Road to Orange Avenue (West) to Capital Circle (SW)
To SR 20 (Blountstown Hwy)

The traffic pattern on Lake Bradford Road will be clearly marked with electronic message boards and City of Tallahassee Officers and Traffic Safety Personnel.

(See map)



Drone / Personal Aircraft Policy on Game Day: (New for 2014)*

Drones or aerial surveillance platforms **not authorized by law enforcement are strictly prohibited inside the stadium or within 1000 feet of the stadium.** Unauthorized drones are to be reported immediately to the command post, who will in turn, notify game operations. All airspace violations will be subsequently reported to the FAA, and a case number generated for a report and investigation. Drone aircraft, if possible, will be seized and impounded; however, staff will not make attempts to bring the aircraft down in an uncontrolled manner. Staff should make a concerted effort to locate the drone operator and take appropriate action. Officers are reminded that the football game is an official school function.

Note – FAA regulations define a drone as an “aircraft” and unauthorized aircraft are prohibited within 3 nautical miles and 3000 feet of an NCAA athletic event at a stadium holding 30,000 or more persons.