



National Bureau of Statistics

STATISTICAL

BULLETIN

Population and Vital Statistics: No 2 of 2013

August 2013

POPULATION AND VITAL STATISTICS 2013

- ◆ Table 1. Mid Year Population estimates, births and deaths 1971-2013
- ◆ Table 2a. Components of Population change, 2002-2013
- ◆ Table 2b. Population growth, 1979-2013
- ◆ Table 3. Mid 2013 Population Estimates
- ◆ Table 4. Mid year Population Estimates 2008–2013
- ◆ Table 5. Age-Dependency ratio, 1990-2013
- ◆ Table 6. Registered Live Births by year, month of registration, sex and status, 2008-2013
- ◆ Table 7. Registered Live Births by birth order, status and age group of mother, 2013
- ◆ Table 8. Registered Live Births by district of residence and age group of mother, 2013
- ◆ Table 9. District Population, Census and midyear estimates

Charts

Figure 1: Population Growth, 1979–2013

Figure 2: Population Pyramid: Mid 2013 Population Estimates

National Bureau of Statistics

CARAVELLE HOUSE - MANGLIER STREET, P.O. BOX 206 - VICTORIA - MAHE - SEYCHELLES, Tel: +248 611650 - Fax: +248 225634/225339
E-mail: ceo@nbs.gov.sc, stats@nbs.gov.sc - Website: www.nbs.gov.sc

"Your stepping-stone for informed decisions"

MID YEAR POPULATION 2013

1. The population of Seychelles is estimated at 89,949 persons as at 30th June 2013. This represents an increase of 1,646 persons or an annual growth rate of -1.8% since 1st July 2012. Table 1 shows the mid-year population estimates, vital events and rates for the period 1971-2013.
2. Table 2a shows the components of population change for the period 2002-2013. During the period July 2012 to June 2013 an actual growth rate of 1.8% was recorded while the rate of natural increase (births less deaths) was 2.5%. On a longer time scale, the population increased from 74,205 in 1994 to 89,949 in 2013 with an annual growth rate of 1.0% per annum. If migration is discounted, the rate of natural increase for that same period is 1.4% per annum which is the rate at which the Seychelles population would double in 54 years.

8. Table 7 shows that 121 (15%) of all births in the first six months of 2013 occurred to women aged less than 20 years. This has increased from 14% recorded for the same period of 2012.
9. Table 8 shows that the districts with the highest number of births for the first six months of 2013 were English River (60), Anse Etoile (56) and Baie Sainte Anne (44).
10. Of the total number of births in each district, Les Mamelles recorded the highest percentage of births to teenagers (34%), followed by Anse Boileau (28%) and Baie Sainte Anne (25%).

DEATHS

3. Table 3 presents the mid 2013 population by single years respectively. In 2013 there were 44,735 males and 45,214 females or an approximate ratio of 989 men for every 1000 women. The population pyramid (Figure 2) presents a graphic display of the mid-2013 population.
 4. Table 4 shows the mid-year population estimates by broad age groups for the years 2008-2013. The proportion of persons of prime working age (20-44) has also decreased from 42.4% in 2008 to 39.1% in 2013. Conversely the proportion aged 45-64 has increased from 18.9% in 2008 to 23.6% during that same period.
 5. Table 5 indicates that the age dependency ratio has continuously declined from 689 in 1990 to 429 in 2013. The age-dependency ratio measures the number of persons of in the dependent age (under 15 and 65 years and above) to those in the economically productive age (15-64).
11. There were 642 deaths registered in the period July 2012 to June 2013. Of these deaths, 306 occurred during the last six months of 2012 whilst 336 occurred in the first six months of 2013. (The number of deaths in Table 2 excludes deaths occurring to persons not on the NPD. Those persons are excluded from the calculation of the Population Estimates).
 12. The total number of infant deaths (death to babies aged less than one year) for the same period was 15. Of these, 5 occurred in the last six months of 2012 and 10 in the first half of 2013.

MIGRATION

13. The net migration figure of (673) persons for the period July 2012 to June 2013 (Table2) was made up of 969 male in migrants and 296 female out migrants.

BIRTHS

6. Table 6 shows the status of births in Seychelles since 2008. Of the 1,615 births between 1st July 2012 and 30th June 2013, 807 occurred in the second half of 2012 and 808 occurred in the first half of 2013.
7. The proportion of nuptial births has decreased from 20.9% in 2008 to 20.2% for the first six months of 2013, The proportion of acknowledged births (where the baby has been recognized by the father) has shown an increase from 60.9% in 2008 to 64.2% in the first six months of 2013, whilst the proportion of non-acknowledged births has decreased from 18.2% in 2008 to 15.6% in the first six months of 2013.

MID-YEAR POPULATION ESTIMATES, BIRTHS AND DEATHS, 1971-2013

Table 1

| Year | Mid-year Population | No. of | | No. of | | Registered | |
|----------------------|------------------------|----------------------|------------------------------|----------------------|------------------------------|------------------|------------------------------------|
| | | Registered Births | Birth ⁽¹⁾ Rate | Registered Deaths | Death ⁽¹⁾ Rate | Infant Deaths | Infant ⁽²⁾ Mortality |
| 1971 | 54,695 | 1,837 | 33.6 | 463 | 8.5 | 61 | 33.2 |
| 1972 | 56,029 | 1,723 | 30.8 | 529 | 9.4 | 62 | 36.0 |
| 1973 | 56,892 | 1,639 | 28.8 | 474 | 8.3 | 51 | 31.1 |
| 1974 | 57,937 | 1,860 | 32.1 | 496 | 8.6 | 73 | 39.2 |
| 1975 | 59,292 | 1,806 | 30.5 | 433 | 7.3 | 64 | 35.4 |
| 1976 | 60,504 | 1,642 | 27.1 | 466 | 7.7 | 53 | 32.3 |
| 1977 | 61,786 | 1,599 | 25.9 | 477 | 7.7 | 69 | 43.2 |
| 1978 | 62,150 | 1,796 | 28.9 | 466 | 7.5 | 47 | 26.2 |
| 1979 | 62,686 | 1,730 | 27.6 | 436 | 7.0 | 44 | 25.4 |
| 1980 | 63,261 | 1,830 | 28.9 | 444 | 7.0 | 32 | 17.5 |
| 1981 | 64,035 | 1,802 | 28.1 | 442 | 6.9 | 31 | 17.2 |
| 1982 | 64,413 | 1,552 | 24.1 | 482 | 7.5 | 30 | 19.3 |
| 1983 | 64,355 | 1,662 | 25.8 | 452 | 7.0 | 24 | 14.4 |
| 1984 | 64,717 | 1,732 | 26.9 | 487 | 7.5 | 24 | 13.8 |
| 1985 | 65,244 | 1,729 | 26.5 | 468 | 7.2 | 31 | 17.9 |
| 1986 | 65,652 | 1,722 | 26.2 | 498 | 7.6 | 31 | 18.0 |
| 1987 ⁽³⁾ | 68,499 | 1,684 | 24.5 | 505 | 7.4 | 31 | 18.4 |
| 1988 | 68,755 | 1,643 | 23.8 | 504 | 7.3 | 28 | 17.0 |
| 1989 | 69,167 | 1,600 | 23.0 | 566 | 8.1 | 29 | 18.1 |
| 1990 | 69,507 | 1,617 | 23.1 | 543 | 7.7 | 21 | 13.0 |
| 1991 ⁽⁴⁾ | 70,439 | 1,706 | 24.2 | 542 | 7.7 | 22 | 12.9 |
| 1992 ⁽⁵⁾ | 70,763 | 1,601 | 22.6 | 522 | 7.4 | 19 | 11.9 |
| 1993 | 72,253 | 1,689 | 23.4 | 597 | 8.3 | 22 | 13.0 |
| 1994 ⁽⁶⁾ | 74,205 | 1,700 | 22.9 | 562 | 7.6 | 15 | 8.8 |
| 1995 | 75,304 | 1,582 | 21.0 | 525 | 7.0 | 29 | 18.3 |
| 1996 | 76,417 | 1,611 | 21.1 | 566 | 7.4 | 15 | 9.3 |
| 1997 | 77,319 | 1,475 | 19.1 | 603 | 7.8 | 12 | 8.1 |
| 1998 ⁽⁷⁾ | 78,846 | 1,412 | 17.9 | 570 | 7.2 | 12 | 8.5 |
| 1999 | 80,410 | 1,460 | 18.2 | 560 | 7.0 | 15 | 10.3 |
| 2000 ⁽⁷⁾ | 81,131 | 1,512 | 18.6 | 553 | 6.8 | 15 | 9.9 |
| 2001 | 81,202 | 1,440 | 17.7 | 554 | 6.8 | 19 | 13.2 |
| 2002 ⁽⁸⁾ | 83,723 | 1,481 | 17.7 | 647 | 7.7 | 26 | 17.6 |
| 2003 ⁽⁸⁾ | 82,781 | 1,498 | 18.1 | 668 | 8.1 | 25 | 16.7 |
| 2004 ⁽⁹⁾ | 82,475 | 1,435 | 17.4 | 611 | 7.2 | 17 | 11.8 |
| 2005 | 82,858 | 1,536 | 18.5 | 673 | 8.1 | 16 | 10.4 |
| 2006 | 84,600 | 1,467 | 17.3 | 664 | 7.8 | 14 | 9.5 |
| 2007 | 85,033 | 1,499 | 17.6 | 630 | 7.4 | 16 | 10.7 |
| 2008 | 86,956 | 1,546 | 17.8 | 662 | 7.6 | 20 | 12.9 |
| 2009 | 87,298 | 1,580 | 18.1 | 684 | 7.8 | 17 | 10.8 |
| 2010 ⁽¹⁰⁾ | 89,770 | 1,504 | 16.8 | 664 | 7.4 | 21 | 14.0 |
| 2011 ⁽¹¹⁾ | 87,441 | 1,625 | 18.6 | 691 | 7.9 | 16 | 9.8 |
| 2012 | 88,303 | 1,645 | 18.6 | 651 | 7.4 | 17 | 10.3 |
| 2013 | 89,949 | | | | | | |

Source: National Bureau of Statistics/Civil Status Office

- Notes:**
- ⁽¹⁾ Measured per thousand of mid-year population
 - ⁽²⁾ Deaths of infants under one year of age per 1000 live births
 - ⁽³⁾ The mid year population estimates for 1987-1993 have been rebased using the 1987 census data
 - ⁽⁴⁾ 2 persons aged 36 & 37 who were registered in 1991 are not included in births in this table
 - ⁽⁵⁾ 2 persons aged 27 & 50 who were registered in 1992 are not included in births in this table
 - ⁽⁶⁾ The population has been rebased using the 1994 Census results
 - ⁽⁷⁾ The population has been adjusted due to misreporting of births from Civil Status
 - ⁽⁸⁾ The original census figure has been adjusted by 2.4% to take into account undercounts
 - ⁽⁹⁾ The population has been rebased using the 2002 Census results.
 - ⁽¹⁰⁾ The population has been rebased using the 2010 Census results.
 - ⁽¹¹⁾ The population has been adjusted due to misreporting of births from Civil Status

COMPONENTS OF POPULATION CHANGE, 2002 - 2013

Table 2a

| Period | Population at beginning of | | | Migration | Population at end of period |
|------------------------------|----------------------------|--------|--------|-----------|-----------------------------|
| | period | Births | Deaths | | |
| Jul-Dec 2002 ⁽¹⁾ | 83,723 | 724 | -287 | -1984 | 82,176 |
| Jan-June 2003 | 82,176 | 771 | -323 | 157 | 82,781 |
| Jul-Dec 2003 | 82,781 | 727 | -331 | -1186 | 81,991 |
| Jan-June 2004 | 81,991 | 748 | -276 | 12 | 82,475 |
| Jul-Dec 2004 | 82,475 | 687 | -319 | -396 | 82,447 |
| Jan-June 2005 | 82,447 | 808 | -297 | -106 | 82,852 |
| Jul-Dec 2005 | 82,852 | 728 | -358 | -505 | 82,717 |
| Jan-June 2006 | 82,717 | 732 | -363 | 1514 | 84,600 |
| Jul-Dec 2006 | 84,600 | 735 | -289 | -1104 | 83,942 |
| Jan-June 2007 | 83,942 | 767 | -315 | 639 | 85,033 |
| Jul-Dec 2007 | 85,033 | 732 | -290 | -168 | 85,307 |
| Jan-June 2008 | 85,307 | 719 | -340 | 1270 | 86,956 |
| Jul-Dec 2008 | 86,956 | 827 | -296 | -348 | 87,139 |
| Jan-June 2009 | 87,139 | 834 | -298 | -377 | 87,298 |
| Jul-Dec 2009 ⁽²⁾ | 87,298 | 746 | -358 | -564 | 87,122 |
| Jan-June 2010 | 87,122 | 740 | -316 | -1021 | 86,525 |
| Jul-Dec 2010 ⁽³⁾ | 89,770 | 764 | -331 | -2113 | 88,090 |
| Jan-June 2011 ⁽⁴⁾ | 88,090 | 775 | -324 | -1100 | 87,441 |
| Jul-Dec 2011 ⁽⁵⁾ | 87,441 | 850 | -328 | 310 | 88,273 |
| Jan-June 2012 | 88,273 | 838 | -322 | -486 | 88,303 |
| Jul-Dec 2012 | 88,303 | 807 | -306 | 1115 | 89,919 |
| Jan-June 2013 ⁽⁵⁾ | 89,919 | 808 | -336 | -442 | 89,949 |

Source: National Bureau of Statistics from information provided by Civil Status Office and Immigration Division

Notes:

⁽¹⁾ The population has been rebased using the 2002 Census results

⁽²⁾ 1 infant death excluded from population estimates as it was not registered as a birth by Civil Status Office

⁽³⁾ The population has been adjusted and rebased using the 2010 Census results

⁽⁴⁾ The population has been adjusted due to misreporting of births by Civil Status Office

⁽⁵⁾ 1 infant death excluded from population estimates as it was not registered as a birth by Civil Status Office

POPULATION GROWTH 1979-2013

Table 2b

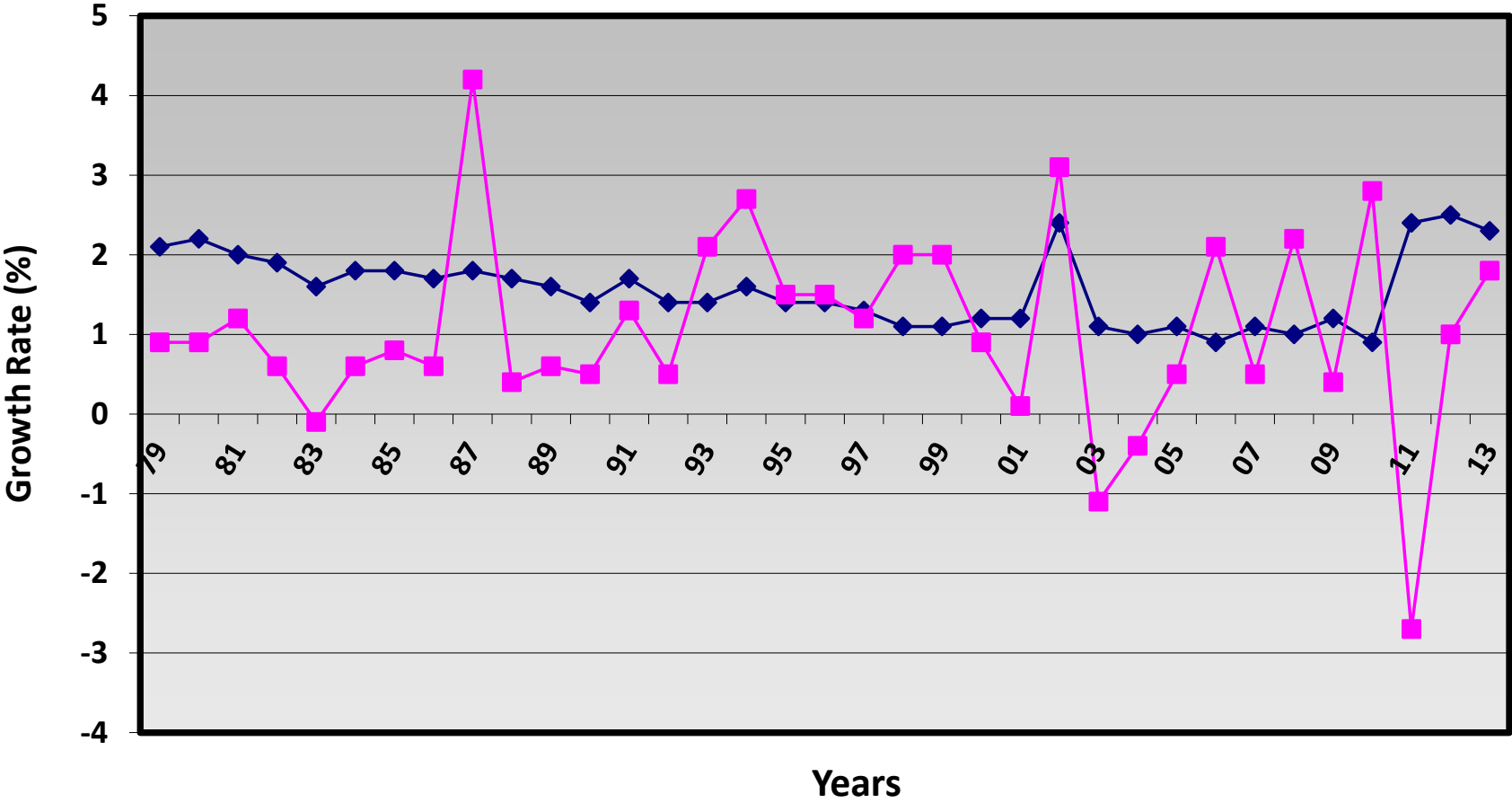
| Period (mid-year) | Mid Year Population | Growth rate with | |
|----------------------|------------------------|------------------|-----------|
| | | Natural Increase | Migration |
| 1979 | 62,686 | 2.1 | 0.9 |
| 1980 | 63,261 | 2.2 | 0.9 |
| 1981 | 64,035 | 2.0 | 1.2 |
| 1982 | 64,413 | 1.9 | 0.6 |
| 1983 | 64,335 | 1.6 | -0.1 |
| 1984 | 64,717 | 1.8 | 0.6 |
| 1985 | 65,244 | 1.8 | 0.8 |
| 1986 | 65,652 | 1.7 | 0.6 |
| 1987 ⁽¹⁾ | 68,499 | 1.8 | 4.2 |
| 1988 | 68,755 | 1.7 | 0.4 |
| 1989 | 69,167 | 1.6 | 0.6 |
| 1990 | 69,507 | 1.4 | 0.5 |
| 1991 | 70,438 | 1.7 | 1.3 |
| 1992 | 70,763 | 1.4 | 0.5 |
| 1993 | 72,253 | 1.4 | 2.1 |
| 1994 ⁽²⁾ | 74,205 | 1.6 | 2.7 |
| 1995 | 75,304 | 1.4 | 1.5 |
| 1996 | 76,417 | 1.4 | 1.5 |
| 1997 | 77,319 | 1.3 | 1.2 |
| 1998 | 78,846 | 1.1 | 2.0 |
| 1999 | 80,410 | 1.1 | 2.0 |
| 2000 | 81,131 | 1.2 | 0.9 |
| 2001 | 81,202 | 1.2 | 0.1 |
| 2002 ⁽³⁾ | 83,723 | 2.4 | 3.1 |
| 2003 ⁽⁴⁾ | 82,781 | 1.1 | -1.1 |
| 2004 | 82,475 | 1.0 | -0.4 |
| 2005 | 82,852 | 1.1 | 0.5 |
| 2006 | 84,600 | 0.9 | 2.1 |
| 2007 | 85,033 | 1.1 | 0.5 |
| 2008 | 86,956 | 1.0 | 2.2 |
| 2009 | 87,298 | 1.2 | 0.4 |
| 2010 ⁽⁵⁾ | 89,770 | 0.9 | 2.8 |
| 2011 | 87,441 | 2.4 | -2.7 |
| 2012 | 88,303 | 2.5 | 1.0 |
| 2013 | 89,949 | 2.3 | 1.8 |

Source: National Bureau of Statistics

Notes:

- ⁽¹⁾ From 1987-1993 the population estimates have been rebased using the 1987 Census results.
- ⁽²⁾ From 1994-2001 the population has been rebased using the 1994 Census results.
- ⁽³⁾ The 2002 census figure has been adjusted by 2.4% to take into account undercounts.
- ⁽⁴⁾ From 2003-2009 the estimates have been rebased on the 2002 Census figure
- ⁽⁵⁾ From 2010 onwards the estimates have been adjusted and rebased on the 2010 Census figure
- ⁽⁶⁾ Natural Increase is Population plus Total Births less Total Deaths.

Figure 1: Mid Year Population Growth rates, 1979-2013



◆ Natural Increase ■ Migration

MID POPULATION ESTIMATES 2013

Table 3

| Age | Males | Females | Total | Age | Males | Females | Total | Age | Males | Females | Total |
|--------------|--------------|--------------|--------------|--------------|--------------|--------------|--------------|--------------|---------------|---------------|---------------|
| 0 | 819 | 791 | 1,610 | 35 | 682 | 705 | 1,387 | 70 | 184 | 171 | 355 |
| 1 | 832 | 806 | 1,638 | 36 | 618 | 770 | 1,388 | 71 | 185 | 220 | 405 |
| 2 | 793 | 793 | 1,586 | 37 | 664 | 702 | 1,366 | 72 | 126 | 198 | 324 |
| 3 | 640 | 541 | 1,181 | 38 | 659 | 740 | 1,399 | 73 | 145 | 223 | 368 |
| 4 | 693 | 700 | 1,393 | 39 | 906 | 776 | 1,682 | 74 | 149 | 187 | 336 |
| 0-4 | 3,777 | 3,631 | 7,408 | 35-39 | 3,529 | 3,693 | 7,222 | 70-74 | 789 | 999 | 1,788 |
| 5 | 581 | 656 | 1,237 | 40 | 788 | 696 | 1,484 | 75 | 116 | 219 | 335 |
| 6 | 688 | 676 | 1,364 | 41 | 806 | 773 | 1,579 | 76 | 93 | 191 | 284 |
| 7 | 654 | 562 | 1,216 | 42 | 771 | 699 | 1,470 | 77 | 99 | 150 | 249 |
| 8 | 645 | 672 | 1,317 | 43 | 800 | 688 | 1,488 | 78 | 87 | 159 | 246 |
| 9 | 611 | 649 | 1,260 | 44 | 491 | 680 | 1,171 | 79 | 73 | 171 | 244 |
| 5-9 | 3,179 | 3,215 | 6,394 | 40-44 | 3,656 | 3,536 | 7,192 | 75-79 | 468 | 890 | 1,358 |
| 10 | 660 | 591 | 1,251 | 45 | 632 | 724 | 1,356 | 80 | 92 | 152 | 244 |
| 11 | 631 | 619 | 1,250 | 46 | 643 | 759 | 1,402 | 81 | 50 | 145 | 195 |
| 12 | 582 | 626 | 1,208 | 47 | 544 | 679 | 1,223 | 82 | 62 | 117 | 179 |
| 13 | 612 | 577 | 1,189 | 48 | 713 | 613 | 1,326 | 83 | 46 | 116 | 162 |
| 14 | 646 | 539 | 1,185 | 49 | 839 | 853 | 1,692 | 84 | 36 | 104 | 140 |
| 10-14 | 3,131 | 2,952 | 6,083 | 45-49 | 3,371 | 3,628 | 6,999 | 80-84 | 286 | 634 | 920 |
| 15 | 543 | 547 | 1,090 | 50 | 640 | 765 | 1,405 | 85 | 35 | 92 | 127 |
| 16 | 728 | 636 | 1,364 | 51 | 526 | 635 | 1,161 | 86 | 35 | 81 | 116 |
| 17 | 662 | 636 | 1,298 | 52 | 848 | 715 | 1,563 | 87 | 22 | 69 | 91 |
| 18 | 695 | 597 | 1,292 | 53 | 673 | 646 | 1,319 | 88 | 26 | 58 | 84 |
| 19 | 783 | 771 | 1,554 | 54 | 475 | 392 | 867 | 89 | 23 | 49 | 72 |
| 15-19 | 3,411 | 3,187 | 6,598 | 50-54 | 3,162 | 3,153 | 6,315 | 85-89 | 141 | 349 | 490 |
| 20 | 784 | 645 | 1,429 | 55 | 548 | 486 | 1,034 | 90 | 1 | 46 | 47 |
| 21 | 783 | 615 | 1,398 | 56 | 489 | 577 | 1,066 | 91 | 19 | 39 | 58 |
| 22 | 729 | 647 | 1,376 | 57 | 470 | 423 | 893 | 92 | 4 | 34 | 38 |
| 23 | 556 | 484 | 1,040 | 58 | 487 | 409 | 896 | 93 | 7 | 7 | 14 |
| 24 | 541 | 453 | 994 | 59 | 479 | 456 | 935 | 94 | 6 | 26 | 32 |
| 20-24 | 3,393 | 2,844 | 6,237 | 55-59 | 2,473 | 2,351 | 4,824 | 90-94 | 37 | 152 | 189 |
| 25 | 772 | 652 | 1,424 | 60 | 317 | 376 | 693 | 95 | - | 9 | 9 |
| 26 | 838 | 620 | 1,458 | 61 | 310 | 346 | 656 | 96 | 2 | 13 | 15 |
| 27 | 687 | 623 | 1,310 | 62 | 279 | 323 | 602 | 97 | - | 9 | 9 |
| 28 | 626 | 782 | 1,408 | 63 | 305 | 289 | 594 | 98 | 2 | 7 | 9 |
| 29 | 686 | 796 | 1,482 | 64 | 248 | 270 | 518 | 99 | 2 | 6 | 8 |
| 25-29 | 3,609 | 3,473 | 7,082 | 60-64 | 1,459 | 1,604 | 3,063 | 95-99 | 6 | 44 | 50 |
| 30 | 812 | 614 | 1,426 | 65 | 260 | 287 | 547 | 100+ | 1 | 5 | 6 |
| 31 | 797 | 771 | 1,568 | 66 | 236 | 261 | 497 | | | | |
| 32 | 713 | 767 | 1,480 | 67 | 175 | 194 | 369 | | | | |
| 33 | 793 | 840 | 1,633 | 68 | 229 | 251 | 480 | TOTAL | 44,735 | 45,214 | 89,949 |
| 34 | 636 | 689 | 1,325 | 69 | 206 | 200 | 406 | | | | |
| 30-34 | 3,751 | 3,681 | 7,432 | 65-69 | 1,106 | 1,193 | 2,299 | | | | |

Source: National Bureau of Statistics

MID-YEAR POPULATION ESTIMATES 2008-2013

Table 4

| Sex and Age Group | 2008 | 2009 | 2010⁽³⁾ | 2011⁽⁴⁾ | 2012 | 2013 |
|--------------------------|----------------------|----------------------|---------------------------|---------------------------|----------------------|----------------------|
| <u>MALES</u> | <u>44,999</u> | <u>45,022</u> | <u>45,907</u> | <u>43,127</u> | <u>43,313</u> | <u>44,735</u> |
| 0-19 | 13,772 | 13,865 | 13,859 | 13,624 | 13,594 | 13,498 |
| 20-44 | 20,174 | 19,888 | 19,887 | 17,151 | 16,957 | 17,938 |
| 45-64 | 8,474 | 8,709 | 9,489 | 9,677 | 9,985 | 10,465 |
| 65+ | 2,579 | 2,560 | 2,672 | 2,675 | 2,777 | 2,834 |
| <u>FEMALES</u> | <u>41,957</u> | <u>42,276</u> | <u>43,863</u> | <u>44,314</u> | <u>44,990</u> | <u>45,214</u> |
| 0-19 | 13,021 | 13,128 | 13,364 | 13,188 | 13,185 | 12,985 |
| 20-44 | 16,662 | 16,457 | 17,488 | 17,360 | 17,378 | 17,227 |
| 45-64 | 7,997 | 8,408 | 8,885 | 9,582 | 10,215 | 10,736 |
| 65+ | 4,277 | 4,283 | 4,126 | 4,184 | 4,212 | 4,266 |
| <u>BOTH SEXES</u> | <u>86,956</u> | <u>87,298</u> | <u>89,770</u> | <u>87,441</u> | <u>88,303</u> | <u>89,949</u> |
| 0-19 | 26,793 | 26,993 | 27,223 | 26,812 | 26,779 | 26,483 |
| 20-44 | 36,836 | 36,345 | 37,375 | 34,511 | 34,335 | 35,165 |
| 45-64 | 16,471 | 17,117 | 18,374 | 19,259 | 20,200 | 21,201 |
| 65+ | 6,856 | 6,843 | 6,798 | 6,859 | 6,989 | 7,100 |
| <u>BOTH SEXES</u> | | | | | | |
| % | | | | | | |
| 0-19 | 30.8 | 30.9 | 30.3 | 30.7 | 30.3 | 29.4 |
| 20-44 | 42.4 | 41.6 | 41.6 | 39.5 | 38.9 | 39.1 |
| 45-64 | 18.9 | 19.6 | 20.5 | 22.0 | 22.9 | 23.6 |
| 65+ | 7.9 | 7.8 | 7.6 | 7.8 | 7.9 | 7.9 |

Source: National Bureau of Statistics

Notes: (1) 2002 Census figure has been adjusted by 2.4% to take into account undercounts

(2) From 2006-2009 the population is based on the 2002 Census

(3) The population has been adjusted and rebased using the 2010 Census

(4) From 2011 onwards the population is based on the 2010 Census

Age-Dependency ratio, 1990-2013

Table 5

| Years | Age-Dependency ratio ⁽¹⁾ |
|-------|-------------------------------------|
| 1990 | 689 |
| 1991 | 655 |
| 1992 | 642 |
| 1993 | 623 |
| 1994 | 607 |
| 1995 | 594 |
| 1996 | 578 |
| 1997 | 561 |
| 1998 | 538 |
| 1999 | 516 |
| 2000 | 504 |
| 2001 | 504 |
| 2002 | 499 |
| 2003 | 499 |
| 2004 | 494 |
| 2005 | 485 |
| 2006 | 462 |
| 2007 | 463 |
| 2008 | 441 |
| 2009 | 439 |
| 2010 | 421 |
| 2011 | 434 |
| 2012 | 433 |
| 2013 | 429 |

Notes:

(1) Age-Dependency ratio is the ratio of persons in the dependent age(under 15 and 65+) to those in the economically productive age (15-64) measured per thousand population

**REGISTERED LIVE BIRTHS BY YEAR, MONTH OF REGISTRATION,
SEX AND STATUS, 2007-2013⁽¹⁾**

Table 6

| Month/Year | 2008 | 2009 | 2010 | 2011 | 2012 | 2013 |
|----------------------|---------------------|---------------------|---------------------|---------------------|---------------------|-------------------|
| January | 116 | 120 | 114 | 103 | 129 | 159 |
| February | 120 | 127 | 99 | 103 | 118 | 115 |
| March | 106 | 142 | 114 | 130 | 140 | 107 |
| April | 126 | 146 | 145 | 144 | 150 | 157 |
| May | 138 | 148 | 127 | 160 | 185 | 147 |
| June | 113 | 151 | 141 | 135 | 116 | 123 |
| July | 186 | 140 | 142 | 152 | 137 | |
| August | 130 | 103 | 135 | 130 | 150 | |
| September | 141 | 140 | 121 | 135 | 131 | |
| October | 116 | 120 | 119 | 151 | 127 | |
| November | 126 | 117 | 126 | 146 | 132 | |
| December | 128 | 126 | 121 | 136 | 130 | |
| <u>TOTAL</u> | <u>1,546</u> | <u>1,580</u> | <u>1,504</u> | <u>1,625</u> | <u>1,645</u> | <u>808</u> |
| <u>SEX</u> | | | | | | |
| Males | 729 | 825 | 761 | 807 | 838 | 406 |
| Females | 817 | 755 | 743 | 818 | 806 | 402 |
| <u>STATUS</u> | | | | | | |
| <u>Nuptial</u> | 323 | 321 | 330 | 355 | 338 | 163 |
| <u>Ex-Nuptial</u> | | | | | | |
| Acknowledged | 941 | 947 | 901 | 992 | 1,005 | 519 |
| Other | 282 | 312 | 273 | 278 | 302 | 126 |

Source: National Bureau of Statistics/Civil Status Office

(1) Relates to the first six months

REGISTERD LIVE BIRTHS BY BIRTH ORDER AND BY STATUS AND AGE GROUP OF MOTHER, 2013⁽¹⁾

Table 7

| Legitimacy Status and Age Group | Total Births | Number of births | | | | | | |
|------------------------------------|-----------------|------------------|------------|------------|------------|-----------|-----------|----------|
| | | Birth Order | | | | | | |
| | | 1 | 2 | 3 | 4 | 5 | 6 | 7+ |
| <u>STATUS</u> | | | | | | | | |
| <u>Nuptial</u> | 338 | 118 | 134 | 54 | 23 | 6 | 2 | 1 |
| <u>Ex-nuptial</u> | | | | | | | | |
| Acknowledged | 1,005 | 441 | 308 | 157 | 69 | 22 | 4 | 4 |
| Other | 302 | 153 | 71 | 41 | 26 | 5 | 5 | 1 |
| TOTAL | 1,645 | 712 | 513 | 252 | 118 | 33 | 11 | 6 |
| <u>AGE-GROUP</u> | | | | | | | | |
| Under 15 | 3 | 3 | | | | | | |
| 15-19 | 229 | 196 | 30 | 1 | 1 | 1 | | |
| 20-24 | 405 | 247 | 128 | 26 | 4 | | | |
| 25-29 | 421 | 163 | 163 | 68 | 20 | 2 | 3 | 2 |
| 30-34 | 346 | 84 | 123 | 80 | 46 | 7 | 4 | 2 |
| 35-39 | 180 | 13 | 54 | 57 | 39 | 12 | 3 | 2 |
| 40-44 | 57 | 6 | 13 | 18 | 8 | 11 | 1 | |
| 45+ | 4 | | 2 | 2 | 0 | | | |

Source: National Bureau of Statistics/Civil Status Office

(1) Relates to the first six months

REGISTERED LIVE BIRTHS BY DISTRICT OF RESIDENCE AND AGE GROUP OF MOTHER, 2013⁽¹⁾

Table 8

| District of Residence | Age Group | | | | | | | Total | |
|-----------------------|-----------|------------|------------|------------|------------|------------|-----------|----------|------------|
| | Under 15 | 15-19 | 20-24 | 25-29 | 30-34 | 35-39 | 40-44 | | 45+ |
| Anse Aux Pins | 1 | 8 | 13 | 9 | 7 | 4 | 0 | 0 | 42 |
| Anse Boileau | | 10 | 9 | 6 | 7 | 2 | 1 | 1 | 36 |
| Au Cap | | 4 | 10 | 11 | 5 | 3 | 1 | 0 | 34 |
| Anse Etoile | | 5 | 20 | 18 | 5 | 6 | 2 | 0 | 56 |
| Anse Royale | | 5 | 6 | 6 | 6 | 1 | 1 | 0 | 25 |
| Bel Air | | 2 | 6 | 8 | 0 | 5 | 0 | 0 | 21 |
| Baie Lazare | | 7 | 8 | 1 | 5 | 7 | 1 | 0 | 29 |
| Belombre | | 4 | 9 | 9 | 4 | 4 | 1 | 0 | 31 |
| Baie Sainte Anne | | 11 | 12 | 14 | 2 | 4 | 1 | 0 | 44 |
| Beau Vallon | | 1 | 7 | 9 | 5 | 11 | 1 | 0 | 34 |
| Cascade | | 4 | 9 | 6 | 6 | 6 | 4 | 0 | 35 |
| English River | 1 | 7 | 11 | 16 | 14 | 11 | 0 | 0 | 60 |
| Glacis | | 7 | 10 | 7 | 6 | 3 | 1 | 0 | 34 |
| Grand Anse Mahe | 1 | 1 | 8 | 6 | 5 | 4 | 2 | 0 | 27 |
| Grand Anse Praslin | | 2 | 12 | 10 | 4 | 2 | 1 | 0 | 31 |
| La Digue | | 2 | 7 | 4 | 4 | 3 | 0 | 0 | 20 |
| Les Mamelles | | 11 | 6 | 4 | 9 | 2 | 0 | 0 | 32 |
| Mont Buxton | | 3 | 15 | 5 | 4 | 5 | 2 | 0 | 34 |
| Mont Fleuri | | 2 | 4 | 10 | 5 | 2 | 0 | 0 | 23 |
| Plaisance | | 2 | 8 | 8 | 4 | 7 | 0 | 2 | 31 |
| Port Glaud | | 2 | 5 | 1 | 1 | 3 | 2 | 0 | 14 |
| Pointe Larue | | 5 | 10 | 8 | 5 | 6 | 0 | 0 | 34 |
| Roche Caiman | | 4 | 8 | 4 | 4 | 1 | 0 | 0 | 21 |
| Saint Louis | | 6 | 10 | 9 | 7 | 3 | 0 | 0 | 35 |
| Takamaka | | 3 | 4 | 10 | 6 | 2 | 0 | 0 | 25 |
| Other Islands | | | | | | | | | |
| Total | 3 | 118 | 227 | 199 | 130 | 107 | 21 | 3 | 808 |

Source: National Bureau of Statistics/Civil Status Office

(1) Relates to the first six months

District Population, Census and Mid Year Estimates

Table 9

| District | Census 2010 | Mid Year Estimates | | |
|--------------------|---------------|--------------------|---------------|---------------|
| | | 2011 | 2012 | 2013 |
| Anse Aux Pins | 3,850 | 3,702 | 3,738 | 3,808 |
| Anse Boileau | 4,011 | 3,856 | 3,894 | 3,967 |
| Au Cap | 4,233 | 4,070 | 4,110 | 4,187 |
| Anse Etoile | 4,717 | 4,535 | 4,580 | 4,665 |
| Anse Royale | 4,168 | 4,007 | 4,047 | 4,122 |
| Bel Air | 2,857 | 2,747 | 2,774 | 2,826 |
| Baie Lazare | 3,608 | 3,469 | 3,503 | 3,568 |
| Belombre | 3,708 | 3,565 | 3,600 | 3,667 |
| Baie Saint Anne | 4,876 | 4,688 | 4,734 | 4,823 |
| Beau Vallon | 4,120 | 3,961 | 4,000 | 4,075 |
| Cascade | 4,267 | 4,103 | 4,143 | 4,220 |
| English River | 4,196 | 4,034 | 4,074 | 4,150 |
| Glacis | 3,833 | 3,685 | 3,722 | 3,791 |
| Grand Anse Mahe | 3,106 | 2,986 | 3,016 | 3,072 |
| Grand Anse Praslin | 3,727 | 3,583 | 3,619 | 3,686 |
| La Digue | 2,761 | 2,655 | 2,681 | 2,731 |
| Les Mamelles | 2,667 | 2,564 | 2,590 | 2,638 |
| Mont Buxton | 3,089 | 2,970 | 2,999 | 3,055 |
| Mont Fleuri | 3,419 | 3,287 | 3,320 | 3,382 |
| Other Islands | 1,042 | 1,002 | 1,012 | 1,031 |
| Plaisance | 3,781 | 3,635 | 3,671 | 3,740 |
| Port Glaud | 2,572 | 2,473 | 2,497 | 2,544 |
| Pointe Larue | 3,071 | 2,953 | 2,982 | 3,037 |
| Roche Caiman | 3,232 | 3,107 | 3,138 | 3,197 |
| Saint Louis | 3,209 | 3,085 | 3,116 | 3,174 |
| Takamaka | 2,825 | 2,716 | 2,743 | 2,794 |
| Total | 90,945 | 87,441 | 88,303 | 89,949 |

Source: National Bureau of Statistics

Note: Assuming similar population distribution as Census 2010

Population Pyramid, Mid 2013 Population Estimates

Age Group

