



REPUBLIC OF UGANDA

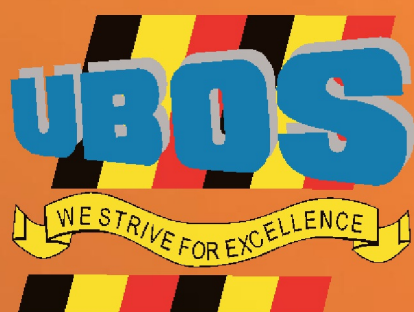
# NATIONAL POPULATION AND HOUSING CENSUS 2014

## PROVISIONAL RESULTS



NOVEMBER 2014

REVISED EDITION



## SELECTED SOCIO ECONOMIC INDICATORS

### Total Census Population

1969	9,535,051
1980	12,636,179
1991	16,671,705
2002	24,227,297
2014	34,856,813

### 2014 Census Population

Males	16,935,456
Female	17,921,357
Rural	28,430,800
Urban	6,426,013
Kampala Capital City	1,516,210

### Household population

Number of households	7,353,427
Average household size	4.7
Population in households	34,350,070

### Annual Population growth rates (percent)

1991-2002	3.20
2002-2014	3.03
1969-2014	2.88

### Sex ratio (percent)

1991	96.5
2002	95.3
2014	94.5

### Population Density (persons per Sq km)

1991	85
2002	123
2014	174

### Projected population (Millions)

2015	35.8
2020	40.4
2025	46.7

### Administrative units (August 2014)

Districts	112
Counties	181
Sub counties	1,382
Municipalities	22
Town councils	174

### Demographic indicators (2011)

Crude Birth Rate	42.1
Total Fertility Rate	6.2
Sex Ratio at birth	103

### Health Indicators (2011)

Infant Mortality Rate	54
Maternal Mortality Rate	438
Contraceptive Prevalence Rate	30
HIV Prevalence rate	7.3

### 2013 Economic Indicators

GDP at current market prices	58,865 billion Shs
Per capita GDP at current market prices	1,638,939 Shs
GDP at constant (2002) market prices:	
Growth rate	4.7 percent
Per capita GDP growth rate	1.1 percent
Contribution of agric to GDP at current market prices	20.9 percent
Reserves	-234.7 million US\$
Inflation rate	5.5 percent
Budget deficit excl. grants as a % GDP (2013/14)	-5.9 percent

### Tourism – Number in 2013

Resident departures	378,000
Non- resident departures	1,188,000
Resident arrivals	478,000
Non-resident arrivals	1,206,000
Visitors to National parks	214,000

# NATIONAL POPULATION AND HOUSING CENSUS 2014

## PROVISIONAL RESULTS

NOVEMBER 2014  
REVISED EDITION

**UGANDA BUREAU OF STATISTICS**

Plot 9, Colville Street, P.O. Box 7186 Kampala.

Tel: +256 414 706000; Fax: +256 414 237553

Email: [ubos@ubos.org](mailto:ubos@ubos.org) Website: [www.ubos.org](http://www.ubos.org)

## TABLE OF CONTENTS

<b>FOREWORD</b> .....	5
<b>EXECUTIVE SUMMARY</b> .....	6
CHAPTER 1: INTRODUCTION .....	1
1.1 Background .....	1
1.2 The National Population and Housing Census 2014 .....	1
1.2.1 Objectives .....	1
1.2.2 The Organisation of the Census .....	2
1.3 The Administrative Units .....	4
CHAPTER 2: THE CENSUS 2014 - PROVISIONAL RESULTS .....	6
2.1 The Population of Uganda, 1911 - 2014 .....	6
2.2 Spatial Distribution of the Population .....	6
2.2.1 District Population .....	6
2.2.2 Subcounty Population .....	8
2.3 Sex Composition of the Population .....	8
2.4 Population Density .....	10
2.5 Urbanization .....	10
2.5.1 Size of Urban Centers .....	11
2.6 Population Type .....	13
2.6.1 Household Population .....	13
2.6.2 Non-household Population .....	14
CHAPTER 3: POPULATION TRENDS .....	15
3.1 Population Growth Rates .....	15
3.2 Projected Population .....	16
CHAPTER 4: CONCLUSION .....	18

## LIST OF TABLES

Table 1.1.1: Number of Administrative Units in Uganda, 1969– 2014.....	4
Table 2.1.1: Population of Uganda, 1911 – 2014 .....	6
Table 2.2.1: The Most and Least Populated Districts in Uganda by Population Size.....	7
Table 2.2.2: Number of Districts by Population Size, Uganda, 2014.....	7
Table 2.2.3: Number of Subcounties/Town Councils/Divisions by Population Size, Uganda, 2014 .....	8
Table 2.5.2: Distribution of Urban Centres by Size, 2014.....	12
Table 2.5.3: Population of the 20 Largest Urban Centres, 1991 – 2014 .....	12
Table 2.6.1: Number of Households and Pop. by Population Type and Selected Characteristics, 2014.....	13
Table 2.6.2: Mean Household Size by Census Year and Residence, 1969 – 2014.....	13
Table 3.1.1: Population Growth Rates, 1969 – 2014 .....	15
Table 3.1.2: Number of Districts by Growth Rate, Uganda, 2002 - 2014 .....	16
Table 3.1.3: Projected Population of Uganda by Age Group, 2015.....	17

## List of Figures

Figure 1.1.1: Map of Uganda showing the Districts and Sub-regions, October 2014.....	5
Figure 2.3.1: Trends in Sex Ratios in Uganda, 1948 – 2014.....	9
Figure 2.3.2: Number of Districts by Sex Ratio of the District Population, Uganda, 2002 - 2014 .....	10
Figure 3.1.1: Projected Population of Uganda, 2015 – 2025.....	16

## List of Appendices

Appendix 1: Population by District By Sex, Residence, Population Type, Uganda, 2014.....	19
Appendix 2: Average Household Size and Population Growth Rates by District Uganda, 2014 .....	22
Appendix 3: Households and Population by Subcounty/Town Council/Urban Division and Sex 2014 .....	22
Appendix 4: List of Conflict Areas 2014 .....	64

## FOREWORD

---

The Uganda Bureau of Statistics was established '*as the principal data collecting and disseminating agency responsible for coordinating, monitoring and supervising the National Statistical System*'. This was the legal basis for conducting the National Population and Housing Census 2014. The Census 2014 was undertaken under the theme 'Counting for Planning and Improved Service Delivery' which is within the framework of the United Nations 2010 Round of Population and Housing Censuses.

The Census exercise was implemented by the Uganda Bureau of Statistics (UBOS), with support from Partner Institutions. I would like to extend the Bureau's appreciation to the Government of Uganda and Development Partners for providing the necessary resources for undertaking the National Population and Housing Census 2014. I would also like to thank all Partner Institutions that collaborated with the Bureau in carrying out this important statistical exercise.

The Bureau is releasing these Provisional Results, based on information from the Summary Sheets compiled by the field staff. These results contain information about the population in all administrative areas down to the Subcounty level. More detailed findings from the Census 2014 will be released in a series of publications over the next two years.

On behalf of the Board of Directors of the Uganda Bureau of Statistics, I would like to thank the National Census Steering Committee for providing the necessary policy guidance in respect to the conduct of the Census. The appreciation also goes to the Ministry of Finance, Planning and Economic Development, the UBOS Management Team, the Census Management Team, the Census Technical Committee, the District Census Teams and all those who in one way or another participated in the planning and/or implementation of the Census 2014. Special appreciation goes to the Census Field Staff, including Supervisors and Enumerators who carried out the enumeration. Finally, we wish to thank all the millions of individual respondents who spared time to respond to the Census questions and the Media for creating the awareness about the Census 2014.

Census information, like all official statistics, are a 'public good' which the Bureau pledges to make readily available and accessible to all users. The Bureau therefore appeals to Policy Makers, Researchers and Academicians to make extensive use of the information for policy analysis and evidence-based decision-making at different levels of service delivery. Together we can harness information resources from the Census to improve service delivery and create a better Uganda for all.

**Together We Count**



**Ben Paul Mungyereza**  
**Executive Director**

## EXECUTIVE SUMMARY

---

The Uganda Bureau of Statistics conducted a National Population and Housing Census in August 2014. This was the 5th post-independence Census in Uganda. The Census 2014 was carried out under the theme 'Counting for Planning and Improved Service Delivery'. The Census Reference Night was the Night of 27th August 2014.

This Provisional Results Report provides information about the population counts disaggregated by sex down to Subcounty level. When the Data Processing is completed, more comprehensive information about the population and to lower levels will be made available. In addition, more detailed information about the individuals and households will be published in 2015.

***Below are the key findings:***

- The Census revealed a total population of 34.9 million, an increase of 10.7 million from the 24.2 million given by the 2002 Census. Most of the Census Population (99 percent) was enumerated in private households. The Census covered a total of 7.3 million households with 34.4 million inhabitants. This gave an average household size of 4.7, similar to the household revealed by the 2002 Census.
- The sex composition of the population is measured by the Sex Ratio, which is defined as the number of males per 100 females in the population. The Census revealed a Sex Ratio of 94.5 males per 100 females, down from 101.9 in 1969. The Sex Ratio has shown a declining trend throughout the post-independence period.
- The level of urbanisation in Uganda is steadily increasing. In 2014, Uganda had 202 urban centres (one City, 22 Municipalities and 174 Town Councils) with a total urban population of six (6) million persons. The size of the urban centres varied widely, from Kampala City with 1.5 million persons to small Town Councils with less than 5,000 persons.
- The distribution of the population by district is not even. Whereas Wakiso district has a population of over two (2) million, accounting for about six percent of the total population, some districts are less populous, with Kalangala having the smallest population of 53,406 persons.
- Between 2002 and 2014, the population increased from 24.2 million to 34.9 million. This gives an average annual growth rate of 3.03 percent. At this rate of growth, the population of Uganda is projected to increase to 35.0 million in 2015 and further to 47.4 million in 2025.

# **CHAPTER 1: INTRODUCTION**

---

## **1.1 Background**

Demographic and socio-economic data are a pre-requisite for planning and evidence-based decision making in any community. Such data are collected through Population Censuses, Demographic and Socio-economic Surveys, Civil Registration Systems and other Administrative Records. In Uganda, the Population Census remains the main source of demographic and socio-economic data.

Uganda has conducted ten (10) National Population Censuses, of which five (5) were conducted in the post-independence period. Population counts were conducted in Uganda in 1911, 1921 and 1931 in the pre-independence period. The period also saw scientific Censuses being conducted in 1948 and 1959. The African and non-African populations were enumerated separately in each of these Censuses.

In the post-independence period, Population Censuses were conducted in 1969, 1980, 1991, 2002 and 2014. These were national in nature with both African and non-African population being enumerated simultaneously. For all these Censuses, the unit of observation was the individual. Overtime, Census taking has been improving in quality and scope, with every Census being more comprehensive than the preceding one.

## **1.2 The National Population and Housing Census 2014**

The Uganda Bureau of Statistics Act No. 12 of 1998 provides for the Minister responsible for Planning to direct 'that a Census be taken' on any matter specified in the Act. This was the legal basis for conducting the National Population and Housing Census 2014. Following the conduct of the 2002 Census, the 10<sup>th</sup> National Population and Housing Census was scheduled to be conducted in 2012. However, this was postponed to August 2014.

### **1.2.1 Objectives**

The overall objective of the Census 2014 was to provide the data required for planning at all levels. The long-term objective of the National Population and Housing Census (NPHC) 2014 is to ensure availability of bench-mark demographic and socio-economic data for use in planning, evidence based decision making, policy formulation and programme evaluation.



## **1.2.2 The Organisation of the Census**

A typical Census has three distinct phases namely the Preparatory Phase, the Enumeration Phase and the Post Enumeration Phase.

### **A. Preparatory Phase**

The Preparatory work for the Census 2014 started in 2009. The major activities in this phase were questionnaire design, census mapping, and conducting of the Pilot Census.

#### ***Questionnaire Development***

The development of the Census questionnaire was highly consultative in an effort to accommodate the views of the various stakeholders. Consultative meetings were organised to collect views on the data requirements from various categories of data users, including Central Government, Local Governments, Civil Society and Development Partners. Arising from the consultations, one universal questionnaire was developed.

The questionnaire for the Census2014 was designed to collect information on a wide range of personal and household characteristics. The Census collected the following information about the individuals:

1. Demographic and Social Characteristics;
2. Residence and Migration characteristics;
3. Parental Survival;
4. Disability Status;
5. Education and Field of Specialisation;
6. Economic Activity;
7. Fertility and Childhood Mortality.

At the household level, the Census collected information on the following:

1. Housing Conditions;
2. Household Assets and Amenities;
3. Distance to Social Services facility;
4. Household based Agricultural activities; and
5. Deaths in Household.

A shorter version of the questionnaire was developed for use in enumerating the non-household population, including those in institutions and hotels. A Community questionnaire was also developed and used to collect information about each of the Local Council I (villages).

#### ***Census Mapping***

Census Mapping was undertaken between January 2009 and June 2012. This was aimed at updating the administrative area boundaries and demarcating the country into Enumeration Areas (EAs). The specific objectives of the Census mapping were:

- i). To produce Area Maps for use during the enumeration exercise to enable enumerators easily identify the boundaries of their assigned Enumeration Areas to ensure completeness of coverage. The maps were also used during the supervision of the enumeration.
- ii). To generate information for use in planning for the enumeration such as estimation of quantity and distribution of enumeration materials and human resource.

## **B. The Enumeration Phase**

### ***Recruitment and Training***

The Census activities in the district were under the overall responsibility the Chief Administrative Officers (CAOs), who signed a Memorandum of Understanding with the Bureau. The Census used the Local Government structure as follows:

- At the District level, the CAO had the overall responsibility for the Census exercise.
- The day to day activities of the Census were managed by officials from the District Planning Units and Municipality Planning Units.
- At the Subcounty Level, the CAOs nominated Subcounty Supervisors who were either Senior Assistant Secretaries or the Community Development Officers in the respective Subcounties.
- The Parish Supervisors and Enumerators were directly recruited by the Chief Administrative Officers through open competition.

All Field staff underwent mandatory ten (10) day training on Census concepts and procedures. The training was cascaded in nature as shown below:

- A core set of UBOS staff underwent a Training of Trainers in Census concepts and Training Skills;
- The UBOS Trainers trained the District-Level Supervisors in a centrally managed residential workshop. The Trainees were split into six (6) classes which were run concurrently;
- The District Level Supervisors trained the Subcounty Supervisors in a ten-day residential training;
- The Parish Supervisors and Enumerators underwent a 10-day non-residential training at the Subcounty Headquarters.

For purposes of ensuring quality, the number of Trainees per class did not exceed 75 persons.

### ***The Enumeration***

The enumeration method was decided on in the early stages of the Census planning as follows:

1. The Census Reference Night was the night of 27<sup>th</sup> August 2014.
2. The enumeration was done on a de facto basis i.e. every person was enumerated where he/she spent the Census Reference Night. A de facto approach was chosen because it is the easiest way of eliminating double counting. However, the characteristics of the Household Heads were recorded whether they were present or absent from the household on the Census Reference Night. This was done in order to allow for proper analysis of household / family structures.
3. The actual enumeration started on 28<sup>th</sup> August and continued to 7<sup>th</sup> September 2014. However, in some areas such as Kampala City, urbanised areas of Wakiso District and Mukono

Municipality, an extra five days (8th – 12th September) were allowed to cover the persons who had not been enumerated during the official enumeration period.

4. The enumeration was carried out through face to face interviews. Trained enumerators moved from household to household within the assigned Enumeration Areas (EAs) and administered the questionnaire to the Head of household or any other knowledgeable household members.
5. Special arrangements were made to enumerate institutional and homeless populations as well as guests in accommodation facilities.

### **Boundary Conflict Areas**

The Census Mapping revealed several areas with administrative boundary conflicts. UBOS management took a decision not to get involved in the process of boundary conflict resolution, as it is outside its mandate. However, for purposes of the Census 2014, the enumeration was carried out by neutral teams of field staff. The results from such areas have not been included in the population of any District/Subcounty but will be included after the conflict is resolved by the responsible authorities.

### **Compilation of the Provisional Results**

In order to facilitate quick compilation of the Provisional Census results, each Enumerator used a pre-designed Summary Sheet to record the number of households and the population enumerated, disaggregating between males and females. This was done under the supervision of technical staff from UBOS. The results provide the population counts at the national, regional, district and sub-county levels broken down by sex. More detailed results will be published at the end of 2015 after completion of the Data Processing.

## **C. The Post-enumeration Phase**

The post-enumeration activities include carrying out the Post-Enumeration Survey (PES), Data Processing and Analysis and Report writing. These will be undertaken by UBOS over the next 24 months.

## **1.3 The Administrative Units**

The country is divided into 111 districts and the Kampala Capital City. The districts are further subdivided into Counties, Subcounties, Parishes and LCIs. The numbers of administrative units have been increasing over time as shown in Table 1.1.1.

**Table 1.1.1: Number of Administrative Units in Uganda, 1969– 2014**

Level of Administrative Unit	1969	1980	1991	2002	2014
Districts	21	33	38	56	112
Counties	111	142	163	163	181
Subcounties	594	668	809	958	1,382



## CHAPTER 2 : THE CENSUS 2014 - PROVISIONAL RESULTS

### 2.1 The Population of Uganda, 1911 - 2014

Uganda had a total population of 34.9 million persons as of the Census Reference Night (27<sup>th</sup> August 2014). During the period 1969 - 2014 period, the population of Uganda increased by 25.3 million from 9.5 million to 34.9 million as shown in Table 2.1.1. The last inter-censal period (September 2002 to August 2014), the population increased by 10.6 million persons over a period of about 12 years.

**Table 2.1.1: Population of Uganda, 1911 – 2014**

Census Year	Population by Race		Population by Sex		Total Population
	African	Non-African	Males	Females	
1911	2,463,469	2,856			2,466,325
1921	2,847,735	6,873			2,854,608
1931	3,525,014	17,267			3,542,281
1948	4,917,555	40,956			4,958,520
1959	6,449,558	87,058			6,536,616
1969	--	--	4,811,428	4,723,623	9,535,051
1980	--	--	6,259,837	6,376,342	12,636,179
1991	--	--	8,185,747	8,485,958	16,671,705
2002*	--	--	11,824,273	12,403,024	24,227,297
2014	--	--	16,935,456	17,921,357	<b>34,856,813</b>

\* The 2002 Population Census figures for Kotido were adjusted downwards following evidence of deliberate inflation of the number of persons.

-- Data was not disaggregated by Race

### 2.2 Spatial Distribution of the Population

The spatial distribution of the population has an effect on the development of a country and its constituent parts. The spatial distribution of a population is affected by factors such as environmental factors, historical factors and the level of economic activity among others. For purposes of this report, the study of the spatial distribution of the population is limited to the Districts and Subcounties.

#### 2.2.1 District Population

The distribution of the Population by district in 2014 Censuses is shown in Appendix 1 and summarized in Table 2.2.1. The findings show that the distribution of the population by district is uneven with Wakiso district having the largest population (more than 2 million persons), followed by

Kampala City (about 1.5 million persons<sup>1</sup>). On the other hand, Kalangala district had the smallest population of 55,087 persons.

**Table 2.2.1: The Most and Least Populated Districts in Uganda by Population Size**

<u>Most Populated Districts</u>		<u>Least Populated Districts</u>	
District	Population	District	Population
Wakiso	2,007,700	Kalangala	53,406
Kampala	1,516,210	Ntoroko	66,422
Kibaale	788,714	Bukwo	89,253
Arua	785,189	Buvuma	89,960
Kasese	702,029	Lyantonde	94,573
Mubende	688,819	Kween	95,623
Mukono	599,817		
Hoima	573,903		
Kabale	534,160		
Tororo	526,378		
Rakai	518,008		
Iganga	506,388		

Table 2.2.2 shows that 59 out of 112 districts each have a population of less than 250,000 persons, collectively constituting 29 percent of the total population. On the other side, there are twelve (12) districts each having a population of more than 500,000 persons, and they contribute 28 percent of the total population. The median size of a district in Uganda was 240,000 persons.

**Table 2.2.2: Number of Districts by Population Size, Uganda, 2014**

Population Size	Districts		Population	
	Number	Percent	Number	Percent
Less than 100,000	6	5.4	489,237	1.4
100,000 – 249,999	53	47.3	9,582,693	27.5
250,000 – 499,999	41	36.6	15,024,850	43.1
500,000 – 999,999	10	8.9	6,223,405	17.9
More than 1,000,000	2	1.8	3,523,910	10.1
Conflict Areas			12,718	0.0
<b>Total</b>	<b>112</b>	<b>100</b>	<b>34,856,813</b>	<b>100</b>

<sup>1</sup> This figure relates to the population that spent the Census Reference Night within the confines of a given district. It should be noted that Urban areas such as Kampala City have a high day-time population including the population that works in that area but does not reside within the area.

## 2.2.2 Subcounty Population

The population of Subcounties/Town Councils/Urban Divisions is given in Appendix 3 and summarised in Table 2.2.3. It is observed that like the population of districts, the population of the subcounties is highly variable.

Nearly half of the subcounties (669 out of 1,381) had populations of between 10,000 and 25,000 persons, with a total population of 11.4 million persons, while another 455 Subcounties have population of 25,000 – 50,000 persons each and giving a total population of 15.7 million persons. These two categories together constitute 78 percent of the total population.

**Table 2.2.3: Number of Subcounties/Town Councils/Divisions by Population Size, Uganda, 2014**

	Subcounties		Subcounty Population	
	Number	Percent Share	Number	Percent Share
Less than 10,000	192		1,359,487	3.9
10,000 – 24,999	669		11,386,175	32.7
25,000 – 49,999	455		15,803,282	45.3
50,000 – 99,999	53		3,278,641	9.4
More than 100,000	13		3,016,510	8.7
Conflict Area			12,718	
<b>Total</b>	<b>1,381</b>		<b>34,856,813</b>	<b>100.0</b>

Among the rural subcounties, Makindye-Ssabagabo (Wakiso District) is the most populated among the rural subcounties with a population of 284,067 persons, while Makindye Division (Kampala City) was most populous among the Town Councils/Urban Divisions.

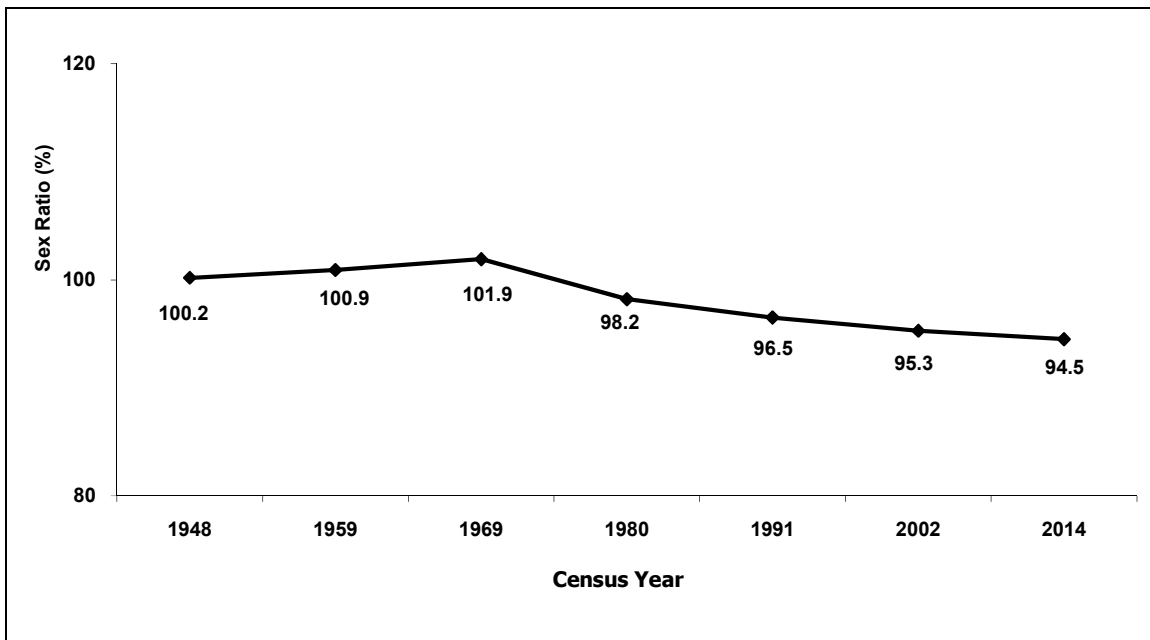
## 2.3 Sex Composition of the Population

The study of the sex composition of the population is useful for understanding the past trends of demographic dynamics of any society. The numerical balance between the sexes has a major effect on the demographic, social and economic inter-relationships when cross classified with reference to social and economic variables. Sex composition is also valuable in understanding gender issues in development.

There are several measures of the sex composition, but the most popular is the Sex Ratio (defined as number of males per 100 females). It is an index for comparing the numerical balance between the two sexes in different population groups irrespective of their size, location and time reference.

In 2014, there were 16.9 million males as compared to 17.9 million females (Table 2.1.1). This gives a sex ratio of 94.5 males per 100 females. The overall sex ratio in Uganda showed a rising trend between 1948 and 1969 and a declining trend thereafter (Figure 2.3.1).

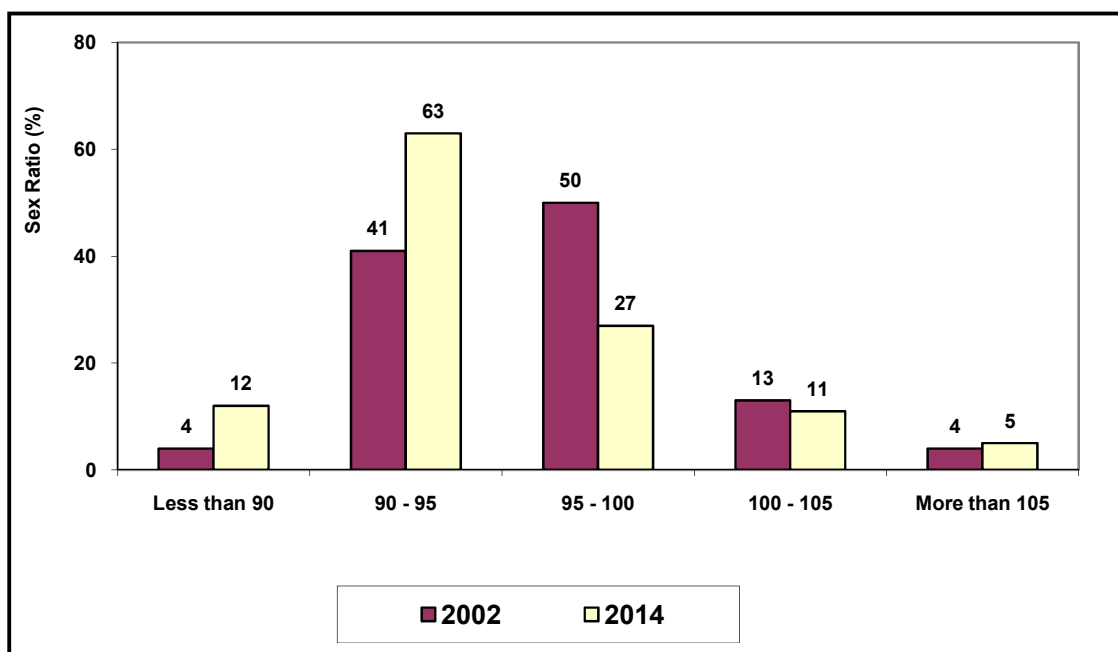
**Figure 2.3.1: Trends in Sex Ratios in Uganda, 1948 – 2014**



The Sex Ratios for districts from data of the 2002 and 2014 Censuses are given in the Appendix 2 and summarised in Figure 2.3.1. The data show that in 2014, the majority of the districts (60 out of 112) had Sex Ratios between 90 and 95 males per 100 females. The Appendix shows that the Sex Ratios for the districts in 2014 varied widely between 134.5 for Kalangala and 81.3 for Kisoro.



**Figure 2.3.2: Number of Districts by Sex Ratio of the District Population, Uganda, 2002 - 2014**



## 2.4 Population Density

The Population Density is a measure of the degree of crowding of an area. The Population Density in this report is given in terms of persons per square kilometre of land area.

Table 2.4.1 shows that the Population Density of Uganda was only 48 persons per square kilometer in 1969, but has since increased to 174 persons per square kilometer according to the 2014 Census.

**Table 2.4.1: Population Density of Uganda, 1969 – 2014**

Index	1969	1980	1991	2002	2014
Population (Millions)	9.5	12.6	16.7	24.2	34.8
Population Density (Persons per Sq Km)	48	64	85	123	174

*NB: Uganda has a total Land area of 200,523.2square kilometres (sq. kms).*

## 2.5. Urbanization

There is no universally accepted definition of an urban area. In Uganda, the definition of urban areas has been changing over time. The 1969, 1980 and 1991 Censuses defined urban areas to include gazetted urban centres (City, Municipalities and Town Councils) and ungazetted Trading Centres. However, the 2002 and 2014 Censuses defined urban areas to include only the gazetted urban centres (City, Municipalities, Town Councils and Town Boards). In August 2014, there were 197 urban

centres in Uganda as shown in Table 2.5.1. These include one Capital City, 22 Municipalities, 174 Town Councils (excluding the Town Boards).

Table 2.5.1 gives number of urban centres by type and urban population based on the Censuses held in 1969, 1980, 1991, 2002 and 2014. The urban population increased overtime from about 600,000 in 1969 to nearly three (3) million in 2002, a fivefold increase in 33 years. The period 1991 – 2002 saw a more rapid increase in the urban population, nearly doubling from three (3) million to over six (6) million. This increase is partly because of natural population increase, an increase in the number of urban centres from 75 in 2002 to 197 in 2014, and expansion in the geographical area of some urban centres.

**Table 2.5.1: Number of Urban Centres by type, Census Year and Urban Population (1969 – 2014)**

Index	1969	1980	1991	2002	2014*
Number of Gazetted Urban Centres	na	41	150	75	197
City	na	1	1	1	1
Municipality	na	2	13	13	22
Town Council	na	34	33	61	174
Town Board/Township	na	4	18	20	na
<b>Urban Population</b>	<b>634,952</b>	<b>938,287</b>	<b>1,889,622</b>	<b>2,921,981</b>	<b>6,426,013</b>

NB: The figures in 1969, 1980 and 1991 are as per the 1991 definition, while those for 2002 and 2014 are as per the 2014 definition of urban areas.

na Information Not Available

\* The Urban Population of 2014 excludes the Population enumerated in Town Boards

### 2.5.1 Size of Urban Centers

Table 2.5.2 shows that the urban population is concentrated in a few urban areas. There are 21 urban Centres with a population of more than 50,000 persons. These constitute only 11 percent of the urban centres but collectively host 57 percent of the urban population of Uganda. On the converse, there are 149 Urban Centres with a population of 25,000 persons or less, and their total population constitutes only 28 percent of the total urban population of Uganda. The median size of an urban centre in Uganda is 24,000 persons.

**Table 2.5.2: Distribution of Urban Centres by Size, 2014**

Population of Urban Centre	Urbanization Index		Share of the Total
	Number of Urban Centres	Total Population	
More than 250,000	2	1,829,971	28.5
100,000 – 250,000	7	959,859	14.9
50,000 – 100,000	12	852,500	13.3
25,000 – 50,000	27	1,005,469	15.6
10,000 – 25,000	90	1,382,763	21.5
Less than 10,000	59	395,451	6.2
<b>Total</b>	<b>197</b>	<b>6,426,013</b>	<b>100.0</b>

Table 2.5.3 gives the population of the 20 largest urban centres of Uganda in 2014 and their population sizes in 1991, 2002 and 2014. Kampala Capital City has remained the primate urban centre throughout the period 1991 - 2014. However, the proportion of Kampala city to the total urban population has declined steadily from 41 percent in 1991 to 25 percent in 2014, showing that the smaller urban areas are growing faster. Between 2002 and 2014 Wakiso Town Council showed the highest growth rate (11.9 percent), followed by Hoima Municipality (10.7), Mukono Municipality (10.4) Masindi Municipality (8.9 percent), Mbarara Municipality (8.6 percent) and Kasese Municipality (5.3 percent). All these except Wakiso Town Council had boundary changes between 2002 and 2014. The other urban centres had growth rates lower than 5 percent per annum, which is deemed normal for an urban centre.

**Table 2.5.3: Population of the 20 Largest Urban Centres, 1991 – 2014**

	District	Urban Centre	Census Population			Growth Rate (2002 - 2014)
			1991	2002	2014	
1	Kampala	Kampala Capital City	774,241	1,189,142	1,516,210	2
2	Wakiso	Kira Town Council	na	na	313,761	na
3	Mbarara	Mbarara Municipality	41,031	69,363	195,013	8.6
4	Mukono	Mukono Municipality	7,406	46,506	161,996	10.4
5	Gulu	Gulu Municipality	38,297	119,430	152,276	2
6	Wakiso	Nansana Town Council	na	na	144,441	na
7	Masaka	Masaka Municipality	49,585	67,768	103,829	3.6
8	Kasese	Kasese Municipality	18,750	53,907	101,679	5.3
9	Hoima	Hoima Municipality	4,616	27,934	100,625	10.7
10	Lira	Lira Municipality	27,568	80,879	99,059	1.7
11	Mbale	Mbale Municipality	53,987	71,130	96,189	2.5
12	Masindi	Masindi Municipality	10,839	28,300	94,622	10.1
13	Buikwe	Njeru Town Council	36,731	51,236	81,052	3.8
14	Jinja	Jinja Municipality	65,169	71,213	72,931	0.2
15	Wakiso	Entebbe Municipality	42,763	55,086	69,958	2
16	Arua	Arua Municipality	22,217	43,929	62,657	3
17	Wakiso	Wakiso Town Council	na	14,603	60,911	11.9
18	Busia	Busia Municipality	27,967	36,630	55,958	3.5
19	Kabarole	Fort Portal Municipality	32,789	40,993	54,275	2.3
20	Iganga	Iganga Municipality	19,740	39,472	53,870	2.6
	<b>Total</b>		<b>1,273,696</b>	<b>2,107,521</b>	<b>3,591,312</b>	

na – Data Not Available because the Urban Centre was not a gazetted urban centre at the time of the Census

## 2.6 Population Type

The Census 2014 enumerated persons who spent the Census Reference Night within the boundaries of Uganda. These included both Household and Non-household Population. Out of the 34.9 million persons enumerated, 34.4 million (99 percent) were enumerated in private households. The remaining half a million were enumerated in hotels, institutions or as homeless/floating population as shown in Table 2.6.1.

**Table 2.6.1: Number of Households and Population by Population Type and Selected Characteristics, 2014**

Population Type	Number of Households	Sex		Residence		Total
		Male	Female	Urban	Rural	
Household	7,353,427	16,626,670	17,723,400	6,214,066	28,136,004	34,350,070
Non Household	na	308,786	197,957	211,947	294,796	506,743
Total	7,353,427	16,935,456	17,921,357	6,426,013	28,430,800	34,856,813
Share of Institutional Population (%)	na	1.8	1.1	3.3	1.0	1.5

### 2.6.1 Household Population

The Census 2014 defined a household as “a group of persons who normally LIVE and EAT together”. Using the above definition, the Census 2014 realised a total of 7.3 million households countrywide. The Mean Household Size is a summary measure that gives the mean number of persons per household. It is obtained as the ratio of the total household population to the number of households in an area. Table 2.6.2 shows that the Mean Household Size in Uganda is 4.7 persons and has remained fairly stable over the past four decades.

**Table 2.6.2: Mean Household Size by Census Year and Residence, 1969 – 2014**

Residence	1969	1991	2002	2014
Urban	na	4.0	4.1	4.2
Rural	na	4.9	4.8	4.8
<b>Uganda</b>	<b>4.7</b>	<b>4.8</b>	<b>4.7</b>	<b>4.7</b>

Note: The figure for 1969 excludes Karamoja area

Appendix 2 reveals wide variations in the Mean Household Size by district. The Mean Household Sizes range between 2.7 for Kalangala district and 7.6 for Yumbe District. A total of 47 districts have Mean Household Sizes lower than the national average (4.7). Most of the districts (77 out of 112) had a Mean Household Size falling between 4.5 and 5.5 persons.

### **2.6.2 Non-household Population**

In addition to the population enumerated in households, some persons were enumerated in institutions or as floating population. It should be noted that the Census enumeration was undertaken when the schools were on holiday, hence, the boarding school pupils and students were enumerated as part of the household population.

The non-household population constitutes a very small component (1.5 percent) of the total population. The data shows that the non-household population is predominantly male dominated with 61 percent being males, giving a Sex Ratio of 156 males per 100 females, compared to 94 percent for the household population.

## CHAPTER 3: POPULATION TRENDS

---

### 3.1 Population Growth Rates

During the period 2002 - 2014, the population of Uganda increased from 24.2 to 34.9 million, an increase of 10.7 million over a period of 12 years. This gives a growth rate of 3.03 percent (Table 3.1.1), which is slight decline from the rate of 3.20 observed between 1991 and 2002. Uganda's high rate of population growth is mainly due to the high fertility levels (over six children per woman) that have been observed for the past four decades, combined with a faster decline in mortality levels, reflected by a decline in Infant and Childhood Mortality Rates as revealed by the Uganda Demographic and Health Surveys (UDHS) of 2006 and 2011.

**Table 3.1.1: Population Growth Rates, 1969 – 2014**

Index of Population Growth	Inter-censal Period		
	1991 - 2002	2002 - 2014	1969 - 2014
Inter-censal Population Increase (Millions)	7.5	10.2	24.9
Average Annual Increase ('000s)	686	850	553
Average Annual Growth Rate ( percent)	3.20	3.03	2.88

The District Specific Annual Growth Rates are given in Appendix 2 and summarized in Table 3.1.2. The Table shows that between 2002 and 2014, two districts (Kaabong and Moyo) registered negative population growth rates, whereas all districts had a positive growth between 1991 and 2002.

The Appendix further shows that 41 out of the 112 districts had growth rates within the range of 2.5 percent to 3.5 percent. Out of the remaining 71 districts, 32 had growth rates higher than 3.5 percent while 39 had growth rates lower than 2.5 percent. Appendix 2 shows that the annual population growth rates vary widely by district, ranging from 9.6 percent for Nwoya District to a decline of 2.9 percent for Moyo District.

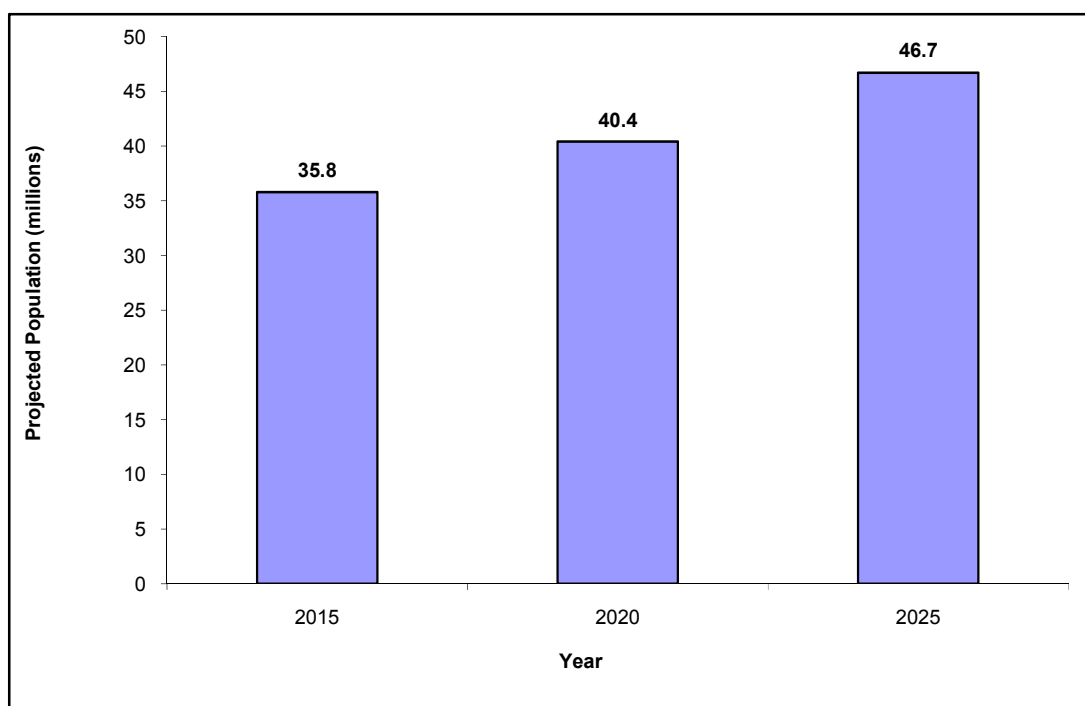
**Table 3.1.2: Number of Districts by Growth Rate, Uganda, 2002 - 2014**

Inter-Census Period	Average Annual Growth Rate					Total
	Less than 0 percent	Between 0 – 2.5 percent	Between 2.5 – 3.5 percent	Between 3.5 – 5 percent	More than 5 percent	
1991 – 2002	0	34	28	31	19	112
2002 - 2014	2	37	41	22	10	112

### 3.2 Projected Population

If Uganda's population maintains the growth rate of 3.03, its population will increase to 46.7 million in the year 2025 (Figure 3.1.1), an increase of 11.8 million persons in 11 years.

**Figure 3.1.1: Projected Population of Uganda, 2015 – 2025**



Information on the age composition of the population is useful in determining the current and future size of different socio-economic and demographic sub-populations. Such sub-populations include infants, children, youth, elderly, economically active persons, school age population and women of reproductive age, among others. However, the information on the age structure of the Uganda population in 2014 is not yet available.

To estimate the population of the selected age groups, the age structure observed from the Uganda Demographic and Health Survey (UDHS) 2011 is applied on projected population for mid-2015. The following sub-populations are thus derived.

- The population aged less than five years is estimated at about 6.6 million.
- The Primary School Age population (6-12 years) is estimated to be 8.2 million.
- The Young Adults (10-24 Years) are estimated at 11.2 million. This is the population that generates the momentum for the population growth.
- The women of reproductive age (15-49 years) are estimated to be 7.3 million, and are expected to give birth to 1.5 million births are expected in 2015.

**Table 3.1.3: Projected Population of Uganda by Age Group, 2015**

Age (Years)	2002 Census	2015 Estimate			Percent of the Population
		Males	Females	Total	
<b>Births in 2015</b>				1,470,800	
10 - 14	3,509,151	2,707,800	2,469,300	5,177,100	14.8
15 - 24	4,883,723	2,844,000	2,963,200	5,807,200	16.6
3 - 5	2,642,407	1,941,400	1,805,200	3,746,600	10.7
6 - 12	5,378,678	4,206,400	3,882,800	8,089,200	23.1
13 - 19	3,995,884	2,724,800	2,605,600	5,330,400	15.2
15 - 49	5,478,502		6,965,300		38.7
< 18	13,708,263	10,320,200	9,553,800	19,874,000	56.7
18 - 30	5,472,062	2,997,300	3,440,100	6,437,400	18.4
60 & Above	1,101,039	664,200	817,400	1,481,600	4.2

\* Refers to Females ONLY



## **CHAPTER 4: CONCLUSION**

---

This report is the first report from the National Population and Housing Census 2014, and it is based on the summary of the household and population counts compiled by the field staff. The report gives counts of the population of all administrative areas down to the Subcounty Level. The Final Results will be made available starting December 2015.

The analytical reports will be made available in phases as the results become available in the subsequent years. The reports are:

- Final Results – District Level Reports
- National Level Analytical Reports
- District Level Analytical Reports
- Electronic Small Area Profiles (ESAPs)
- Census Poverty Maps

## APPENDICES

### Appendix 1: Population by District By Sex, Residence, Population Type, Uganda, 2014

District	Sex		Residence		Population Type		Total
	Males	Females	Urban	Rural	Household	Non Household	
<b>Central</b>							
BUIKWE	213,443	222,963	146,172	290,234	415,115	21,291	436,406
BUKOMANSIMBI	74,405	76,670	9,682	141,393	149,895	1,180	151,075
BUTAMBALA	49,134	51,337	15,196	85,275	99,223	1,248	100,471
BUVUMA	48,084	41,876	9,808	80,152	86,430	3,530	89,960
GOMBA	81,520	78,555	12,443	147,632	158,732	1,343	160,075
KALANGALA	30,633	22,773	4,859	48,547	50,285	3,121	53,406
KALUNGU	89,362	94,769	32,461	151,670	179,050	5,081	184,131
KAMPALA	722,638	793,572	1,516,210	-	1,475,813	40,397	1,516,210
KAYUNGA	180,541	189,669	26,588	343,622	366,471	3,739	370,210
KIBOGA	75,339	73,267	33,262	115,344	144,770	3,836	148,606
KYANKWANZI	110,580	103,477	24,166	189,891	212,295	1,762	214,057
LUWERO	225,728	232,430	96,131	362,027	448,912	9,246	458,158
LWENGO	132,197	143,253	31,058	244,392	272,232	3,218	275,450
LYANTONDE	46,703	47,870	13,586	80,987	93,846	727	94,573
MASAKA	144,231	152,418	103,829	192,820	286,042	10,607	296,649
MITYANA	165,563	165,703	48,002	283,264	325,191	6,075	331,266
MPIGI	125,314	126,198	44,274	207,238	244,780	6,732	251,512
MUBENDE	346,525	342,294	46,921	641,898	671,857	16,962	688,819
MUKONO	291,890	307,927	161,996	437,821	585,863	13,954	599,817
NAKASEKE	104,096	93,607	39,354	158,349	183,569	14,134	197,703
NAKASONGOLA	92,957	88,906	24,816	157,047	176,979	4,884	181,863
RAKAI	253,054	264,954	33,845	484,163	510,210	7,798	518,008
SSEMBABULE	125,395	127,599	17,024	235,970	250,488	2,506	252,994
WAKISO	952,781	1,054,919	638,487	1,369,213	1,970,859	36,841	2,007,700
<b>Eastern</b>							
AMURIA	131,533	139,068	7,066	263,535	269,139	1,462	270,601
BUDAKA	100,196	108,243	23,834	184,605	207,538	901	208,439
BUDUDA	105,938	105,745	6,730	204,953	210,351	1,332	211,683
BUGIRI	188,462	201,614	29,013	361,063	389,044	1,032	390,076
BUKEDEA	90,796	98,122	6,269	182,649	188,918	-	188,918
BUKWO	44,770	44,483	7,686	81,567	88,657	596	89,253
BULAMBULI	85,837	91,485	16,167	161,155	176,419	903	177,322
BUSIA	156,308	169,219	55,958	269,569	322,512	3,015	325,527
BUTALEJA	119,068	126,805	36,249	209,624	245,223	650	245,873
BUYENDE	155,253	165,215	23,039	297,429	319,706	762	320,468
IGANGA	242,023	264,365	68,301	498,087	503,185	3,203	506,388

**Appendix 1 (Cont'd) : Population by District By Sex, Residence, Population Type, Uganda, 2014**

District	Sex		Residence		Population Type		Total
	Males	Females	Urban	Rural	Household	Non Household	
JINJA	227,609	240,647	169,147	299,109	458,368	9,888	468,256
KABERAMAIDO	104,070	109,304	4,010	209,364	212,274	1,100	213,374
KALIRO	115,160	121,767	16,796	220,131	235,047	1,880	236,927
KAMULI	236,150	254,105	17,725	472,530	484,872	5,383	490,255
KAPCHORWA	51,169	53,411	12,345	92,235	103,808	772	104,580
KATAKWI	80,845	84,708	6,947	158,606	162,802	2,751	165,553
KIBUKU	97,008	105,622	8,478	194,152	201,919	711	202,630
KUMI	125,289	132,784	11,463	246,610	256,660	1,413	258,073
KWEEN	48,579	47,044	3,576	92,047	95,104	519	95,623
LUUKA	116,590	124,863	10,337	231,116	240,243	1,210	241,453
MANAFWA	171,745	181,119	22,761	330,103	351,931	933	352,864
MAYUGE	233,077	246,095	17,151	462,021	477,078	2,094	479,172
MBALE	237,610	255,194	123,721	369,083	485,497	7,307	492,804
NAMAYINGO	108,921	114,308	15,741	207,488	221,694	1,535	223,229
NAMUTUMBA	123,011	130,249	18,736	234,524	252,606	654	253,260
NGORA	68,217	74,270	15,086	127,401	141,027	1,460	142,487
PALLISA	186,722	199,352	32,681	353,393	383,941	2,133	386,074
SERERE	137,657	145,973	10,512	273,118	281,065	2,565	283,630
SIRONKO	121,989	124,647	37,611	209,025	245,670	966	246,636
SOROTI	144,408	152,746	49,452	247,702	291,290	5,864	297,154
TORORO	253,653	272,725	72,537	453,841	521,515	4,863	526,378
<b>Northern</b>							
ABIM	52,963	56,076	17,400	91,639	108,087	952	109,039
ADJUMANI	111,503	121,310	43,022	189,791	230,866	1,947	232,813
AGAGO	110,095	117,391	29,167	198,319	226,280	1,206	227,486
ALEBTONG	109,276	116,051	6,628	218,699	224,823	504	225,327
AMOLATAR	72,492	74,412	21,434	125,470	145,159	1,745	146,904
AMUDAT	58,498	53,260	11,617	100,141	98,528	13,230	111,758
AMURU	92,502	98,014	9,846	180,670	188,860	1,656	190,516
APAC	180,109	188,677	22,142	346,644	365,870	2,916	368,786
ARUA	373,762	411,427	62,657	722,532	778,595	6,594	785,189
DOKOLO	88,650	93,929	19,810	162,769	181,542	1,037	182,579
GULU	215,610	228,123	152,276	291,457	435,126	8,607	443,733
KAABONG	79,932	89,342	11,543	157,731	167,935	1,339	169,274
KITGUM	98,438	105,574	44,604	159,408	202,754	1,258	204,012
KOBOKO	102,091	106,072	37,825	170,338	206,716	1,447	208,163
KOLE	117,439	124,439	8,833	233,045	240,618	1,260	241,878
KOTIDO	85,291	93,618	13,990	164,919	169,933	8,976	178,909
LAMWO	64,577	69,473	17,481	116,569	133,812	238	134,050

**Appendix 1 (Cont'd) : Population by District By Sex, Residence, Population Type, Uganda, 2014**

District	Sex		Residence		Population Type		Total
	Males	Females	Urban	Rural	Household	Non Household	
LIRA	196,891	213,625	99,059	311,457	402,772	7,744	410,516
MARACHA	87,278	98,898	8,901	177,275	185,302	874	186,176
MOROTO	50,756	53,783	14,818	89,721	98,607	5,932	104,539
MOYO	67,937	69,552	10,507	126,982	136,243	1,246	137,489
NAKAPIRIPIRIT	82,326	87,365	3,657	166,034	150,038	19,653	169,691
NAPAK	69,086	76,133	16,377	128,842	144,328	891	145,219
NEBBI	184,507	200,713	57,335	327,885	382,712	2,508	385,220
NWOYA	62,899	65,195	13,489	114,605	126,818	1,276	128,094
OTUKE	51,444	54,173	6,217	99,400	105,199	418	105,617
OYAM	188,704	199,307	11,857	376,154	385,931	2,080	388,011
PADER	88,148	95,575	14,080	169,643	182,680	1,043	183,723
YUMBE	229,811	255,771	35,606	449,976	479,457	6,125	485,582
ZOMBO	115,411	124,957	45,847	194,521	238,943	1,425	240,368
<b>Western</b>							
BUHWEJU	60,309	63,735	2,862	121,182	123,583	461	124,044
BULIISA	58,076	55,493	7,285	106,284	108,059	5,510	113,569
BUNDIBUGYO	108,020	116,125	35,198	188,947	222,987	1,158	224,145
BUSHENYI	114,310	121,311	41,063	194,558	230,360	5,261	235,621
HOIMA	286,705	287,198	106,492	467,411	565,189	8,714	573,903
IBANDA	120,308	127,775	63,321	184,762	243,657	4,426	248,083
ISINGIRO	237,549	254,567	52,831	439,285	488,327	3,789	492,116
KABALE	252,164	281,996	76,568	457,592	523,984	10,176	534,160
KABAROLE	234,869	239,347	121,593	352,623	469,012	5,204	474,216
KAMWENGE	205,802	215,668	19,240	402,230	417,394	4,076	421,470
KANUNGU	120,361	131,714	51,694	200,381	250,324	1,751	252,075
KASESE	338,796	363,233	172,053	529,976	696,417	5,612	702,029
KIBAALE	389,278	399,436	61,918	726,796	783,496	5,218	788,714
KIRUHURA	165,266	163,278	27,406	301,138	325,861	2,683	328,544
KIRYANDONGO	133,541	134,647	56,244	211,944	265,390	2,798	268,188
KISORO	128,741	158,438	17,561	269,618	284,031	3,148	287,179
KYEGEGWA	137,860	139,519	18,729	258,650	276,362	1,017	277,379
KYENJOJO	209,845	214,146	65,493	358,498	422,112	1,879	423,991
MASINDI	148,264	144,687	94,622	198,329	283,741	9,210	292,951
MBARARA	229,901	244,243	195,013	279,131	463,474	10,670	474,144
MITOOMA	86,612	98,907	11,465	174,054	184,925	594	185,519
NTOROKO	33,423	32,999	23,186	43,236	65,815	607	66,422
NTUNGAMO	234,244	255,079	58,062	431,261	483,075	6,248	489,323
RUBIRIZI	61,566	67,717	17,341	111,942	128,007	1,276	129,283
RUKUNGIRI	152,376	168,191	36,509	284,058	315,943	4,624	320,567
SHEEMA	100,651	111,069	58,191	153,529	207,283	4,437	211,720
<b>Conflict Areas</b>	6,417	6,301	-	12,718	12,718	-	12,718
<b>UGANDA</b>	<b>16,935,456</b>	<b>17,921,357</b>	<b>6,426,013</b>	<b>28,430,800</b>	<b>34,350,070</b>	<b>506,743</b>	<b>34,856,813</b>

**Appendix 2: Average Household Size and Population Growth Rates by District Uganda, 2014**

Area Name	Households			Growth Rates	
	Number	Average Household Size	Sex Ratio	1991 - 2002	2002 - 2014
<b>Central</b>					
BUIKWE	99,401	4.2	95.7	2.36	2.33
BUKOMANSIMBI	34,520	4.3	97.0	0.84	0.66
BUTAMBALA	21,611	4.6	95.7	1.36	1.22
BUVUMA	25,303	3.4	114.8	7.13	6.25
GOMBA	35,104	4.5	103.8	0.93	1.53
KALANGALA	20,143	2.5	134.5	6.46	3.58
KALUNGU	41,606	4.3	94.3	0.47	1.14
KAMPALA	418,787	3.5	91.1	3.68	2.02
KAYUNGA	77,405	4.7	95.2	1.89	1.90
KIBOGA	34,108	4.2	102.8	0.89	2.59
KYANKWANZI	47,965	4.4	106.9	8.75	4.78
LUWERO	106,235	4.2	97.1	2.49	2.45
LWENGO	61,923	4.4	92.3	1.12	1.07
LYANTONDE	20,855	4.5	97.6	1.87	2.99
MASAKA	75,306	3.8	94.6	0.98	2.19
MITYANA	80,522	4.0	99.9	1.49	1.83
MPIGI	60,256	4.1	99.3	1.51	2.44
MUBENDE	151,985	4.4	101.2	3.62	4.06
MUKONO	145,575	4.0	94.8	2.41	2.91
NAKASEKE	43,579	4.2	111.2	3.26	3.04
NAKASONGOLA	36,526	4.8	104.6	2.01	2.99
RAKAI	117,077	4.4	95.5	1.73	2.06
SSEMBABULE	55,538	4.5	98.3	1.91	2.83
WAKISO	504,620	3.9	90.3	4.10	6.61
<b>Eastern</b>					
AMURIA	48,402	5.6	94.6	8.18	3.40
BUDAKA	37,247	5.6	92.6	2.64	3.53
BUDUDA	37,028	5.7	100.2	3.78	4.52
BUGIRI	75,921	5.1	93.5	3.80	3.16
BUKEDEA	33,058	5.7	92.5	4.17	3.61
BUKWO	16,599	5.3	100.6	4.00	5.01
BULAMBULI	33,992	5.2	93.8	3.51	5.00
BUSIA	65,487	4.9	92.4	2.73	3.08
BUTALEJA	44,311	5.5	93.9	3.34	3.71
BUYENDE	60,818	5.3	94.0	3.26	4.30
IGANGA	102,897	4.9	91.5	3.53	2.95
JINJA	105,146	4.4	94.6	2.50	1.58
KABERAMAIDO	38,521	5.5	95.2	4.11	4.02
KALIRO	43,222	5.4	94.6	3.31	3.55

**Appendix 2 (cont'd): Average Household Size and Population Growth Rates by District  
Uganda, 2014**

Area Name	Households			Growth Rates	
	Number	Average Household Size	Sex Ratio	1991 - 2002	2002 - 2014
KAMULI	93,789	5.2	92.9	3.18	2.54
KAPCHORWA	21,652	4.8	95.8	3.62	2.85
KATAKWI	30,721	5.3	95.4	3.92	2.76
KIBUKU	35,867	5.6	91.8	2.92	3.81
KUMI	43,964	5.8	94.4	4.14	3.71
KWEEN	18,238	5.2	103.3	5.03	2.94
LUUKA	44,994	5.3	93.4	3.02	2.20
MANAFWA	72,740	4.8	94.8	3.31	2.46
MAYUGE	97,513	4.9	94.7	3.46	3.24
MBALE	109,537	4.4	93.1	2.76	3.28
NAMAYINGO	44,813	4.9	95.3	6.51	3.57
NAMUTUMBA	44,465	5.7	94.4	2.60	3.44
NGORA	23,540	6.0	91.9	4.62	2.80
PALLISA	66,802	5.7	93.7	3.70	3.43
SERERE	47,471	5.9	94.3	5.74	3.95
SIRONKO	55,390	4.4	97.9	1.97	2.36
SOROTI	55,195	5.3	94.5	4.54	3.58
TORORO	104,366	5.0	93.0	2.44	2.73
<b>Northern</b>					
ABIM	18,297	5.9	94.4	0.73	6.20
ADJUMANI	41,626	5.5	91.9	6.37	1.17
AGAGO	43,274	5.2	93.8	5.17	1.77
ALEBTONG	45,555	4.9	94.2	3.17	2.70
AMOLATAR	27,885	5.2	97.4	2.91	3.53
AMUDAT	15,850	6.2	109.8	14.78	4.70
AMURU	37,899	5.0	94.4	3.65	2.83
APAC	71,813	5.1	95.5	3.70	3.25
ARUA	147,483	5.3	90.8	3.58	2.83
DOKOLO	34,781	5.2	94.4	3.60	2.87
GULU	87,687	5.0	94.5	2.94	3.30
KAABONG	29,725	5.6	89.5	6.84	-1.50
KITGUM	39,959	5.1	93.2	4.02	1.67
KOBOKO	30,762	6.7	96.2	6.24	3.98
KOLE	49,092	4.9	94.4	3.12	3.14
KOTIDO	26,847	6.3	91.1	6.53	3.15
LAMWO	27,497	4.9	93.0	4.16	1.25
LIRA	89,165	4.5	92.2	3.58	2.88
MARACHA	36,466	5.1	88.3	2.60	2.04

**Appendix 2 (cont'd): Average Household Size and Population Growth Rates by District  
Uganda, 2014**

Area Name	Households		Sex Ratio	Growth Rates	
	Number	Average Household Size		1991 - 2002	2002 - 2014
MOROTO	22,506	4.4	94.4	2.29	2.52
MOYO	25,894	5.3	97.7	7.69	-2.90
NAKAPIRIPIRIT	26,414	5.7	94.2	2.71	5.20
NAPAK	27,471	5.3	90.7	9.39	2.11
NEBBI	75,422	5.1	91.9	3.10	3.08
NWOYA	25,114	5.0	96.5	0.67	9.49
OTUKE	22,273	4.7	95.0	3.05	4.44
OYAM	77,435	5.0	94.7	3.57	3.07
PADER	34,905	5.2	92.2	4.84	2.13
YUMBE	63,722	7.5	89.9	7.93	5.47
ZOMBO	50,969	4.7	92.4	2.16	2.93
<b>Western</b>					
BUHWEJU	25,707	4.8	94.6	3.43	3.36
BULIISA	21,517	5.0	104.7	2.43	4.86
BUNDIBUGYO	44,769	5.0	93.0	4.66	2.87
BUSHENYI	52,029	4.4	94.2	2.10	1.13
HOIMA	125,907	4.5	99.8	4.73	4.27
IBANDA	54,604	4.5	94.2	2.52	1.85
ISINGIRO	102,970	4.7	93.3	2.86	3.69
KABALE	119,631	4.4	89.4	0.81	1.28
KABAROLE	108,179	4.3	98.1	1.50	2.37
KAMWENGE	90,110	4.6	95.4	2.30	3.91
KANUNGU	56,217	4.5	91.4	2.08	1.73
KASESE	140,697	4.9	93.3	3.60	2.45
KIBAALE	168,358	4.7	97.5	5.24	5.54
KIRUHURA	67,484	4.8	101.2	3.51	3.64
KIRYANDONGO	52,710	5.0	99.2	6.95	2.97
KISORO	63,035	4.5	81.3	1.42	2.21
KYEGEGWA	59,332	4.7	98.8	4.77	7.64
KYENJOJO	92,011	4.6	98.0	3.26	3.88
MASINDI	65,090	4.4	102.5	4.07	2.84
MBARARA	113,164	4.1	94.1	2.58	2.26
MITOOMA	40,142	4.6	87.6	1.55	1.19
NTOROKO	13,601	4.8	101.3	6.38	2.19
NTUNGAMO	103,232	4.7	91.8	1.88	2.11
RUBIRIZI	28,853	4.4	90.9	2.58	1.99
RUKUNGIRI	70,853	4.5	90.6	1.53	1.27
SHEEMA	47,360	4.4	90.6	1.40	1.34
<b>Conflict Areas</b>	2,421				
<b>UGANDA TOTAL</b>	<b>7,353,427</b>	<b>4.7</b>	<b>94.5</b>	<b>3.20</b>	<b>3.03</b>

**Appendix 3: Households and Population by Subcounty/ Town Council/Urban Division and Sex, 2014**

District		Households		POPULATION		
County	Subcounty	Number	Average Size	Males	Females	Total
<b>CENTRAL REGION</b>						
<b>BUIKWE</b>						
	BUIKWE	3,965	4.4	8,613	9,034	17,647
	BUIKWE TOWN COUNCIL	3,859	4.3	7,881	8,752	16,633
	KAWOLO	9,692	4.0	20,242	20,154	40,396
	LUGAZI TOWN COUNCIL	9,849	3.6	19,057	20,426	39,483
	NAJJA	10,307	4.5	22,481	23,871	46,352
	NAJJEMBE	8,165	4.0	16,798	16,612	33,410
	NGOGWE	8,080	4.4	17,997	18,129	36,126
	NJERU TOWN COUNCIL	16,502	4.2	38,765	42,287	81,052
	NKOKONJERU TOWN COUNCIL	2,273	3.7	4,228	4,776	9,004
	NYENGA	10,804	4.5	24,278	25,385	49,663
	SSI BUKUNJA	6,643	3.8	13,012	12,596	25,608
	WAKISI	9,262	4.4	20,091	20,941	41,032
<b>BUKOMANSIMBI</b>						
	BIGASA	9,433	4.4	20,772	20,985	41,757
	BUKOMASIMBI TOWN COUNCIL	2,442	3.9	4,638	5,044	9,682
	BUTENGA	9,006	4.2	18,841	19,596	38,437
	KIBINGE	7,418	4.4	15,937	16,877	32,814
	KITANDA	6,221	4.5	14,217	14,168	28,385
<b>BUTAMBALA</b>						
	BUDDE	2,910	4.7	6,828	6,855	13,683
	BULO	4,089	4.6	9,184	9,812	18,996
	GOMBE TOWN COUNCIL	3,269	4.6	7,337	7,859	15,196
	KALAMBA	4,426	4.4	9,910	9,814	19,724
	KIBIBI	3,149	4.5	6,892	7,742	14,634
	NGANDO	3,768	4.8	8,983	9,255	18,238
<b>BUVUMA</b>						
	BUGAYA	1,712	2.8	2,668	2,178	4,846
	BUSAMUZI	3,926	4.1	8,305	7,918	16,223
	BUVUMA TOWN COUNCIL	2,586	3.7	5,115	4,693	9,808
	BUWOOYA	2,621	4.6	6,836	6,652	13,488
	BWEEMA	2,808	3.1	4,772	3,920	8,692
	LUBYA	2,330	2.7	3,373	2,995	6,368
	LWAJJE	1,631	2.5	2,548	1,826	4,374
	LYABAANA	2,485	2.3	4,463	2,435	6,898
	NAIRAMBI	5,204	3.7	10,004	9,259	19,263

Note:

MC: Municipality



**Appendix 3 (cont'd) : Households and Population by Subcounty/ Town Council/Urban Division and Sex, 2014**

District	County	Subcounty	Households		POPULATION		
			Number	Average Size	Males	Females	Total
<b>CENTRAL REGION</b>							
<b>GOMBA</b>							
	GOMBA	KABULASOKE	10,915	4.5	25,268	24,723	49,991
	GOMBA	KANONI TOWN COUNCIL	2,847	4.3	6,258	6,185	12,443
	GOMBA	KYEGONZA	6,604	4.6	15,334	15,038	30,372
	GOMBA	MADDU	7,345	4.7	18,289	16,866	35,155
	GOMBA	MPENJA	7,393	4.3	16,371	15,743	32,114
<b>KALANGALA</b>							
	BUJUMBA	BUJUMBA	4,512	2.4	6,623	4,747	11,370
	BUJUMBA	KALANGALA TOWN COUNCIL	1,644	2.8	2,539	2,320	4,859
	BUJUMBA	MUGOYE	3,810	3.1	6,753	5,500	12,253
	KYAMUSWA	BUBEKE	1,965	2.3	2,884	2,038	4,922
	KYAMUSWA	BUFUMIRA	4,030	2.3	5,826	4,253	10,079
	KYAMUSWA	KYAMUSWA	1,829	2.4	2,721	2,005	4,726
	KYAMUSWA	MAZINGA	2,353	2.0	3,287	1,910	5,197
<b>KALUNGU</b>							
	KALUNGU	BUKULULA	9,669	4.4	21,347	22,603	43,950
	KALUNGU	KALUNGU	8,719	4.2	18,752	20,541	39,293
	KALUNGU	KALUNGU TOWN COUNCIL	2,000	4.0	4,043	4,168	8,211
	KALUNGU	KYAMULIBWA	7,417	4.5	16,633	17,524	34,157
	KALUNGU	LUKAYA TOWN COUNCIL	6,284	3.7	11,586	12,664	24,250
	KALUNGU	LWABENGE	7,517	4.5	17,001	17,269	34,270
<b>KAMPALA</b>							
	KAMPALA CAPITAL CITY	CENTRAL DIVISION	23,205	3.2	41,107	38,682	79,789
	KAMPALA CAPITAL CITY	KAWEMPE DIVISION	94,574	3.5	159,800	178,512	338,312
	KAMPALA CAPITAL CITY	LUBAGA DIVISION	105,991	3.6	178,353	206,033	384,386
	KAMPALA CAPITAL CITY	MAKINDYE DIVISION	110,224	3.5	188,537	206,739	395,276
	KAMPALA CAPITAL CITY	NAKAWA DIVISION	84,793	3.6	154,841	163,606	318,447
<b>KAYUNGA</b>							
	BBAALE	BBAALE	3,726	4.4	8,660	8,001	16,661
	BBAALE	GALIRAAYA	5,716	4.7	13,752	13,068	26,820
	BBAALE	KAYONZA	11,664	5.0	29,359	29,695	59,054
	BBAALE	KITIMBWA	8,938	5.0	21,677	23,366	45,043
	NTENJERU	BUSANA	10,635	5.3	27,559	29,029	56,588
	NTENJERU	KANGULUMIRA	11,889	4.4	25,449	27,890	53,339
	NTENJERU	KAYUNGA	8,745	4.7	20,092	21,552	41,644
	NTENJERU	KAYUNGA TOWN COUNCIL	6,783	3.8	12,409	14,179	26,588
	NTENJERU	NAZIGO	9,309	4.7	21,584	22,889	44,473

*Note:*

*MC: Municipality*

**Appendix 3 (cont'd): Households and Population by Subcounty/ Town Council/Urban Division and Sex, 2014**

District		Households		POPULATION		
County	Subcounty	Number	Average Size	Males	Females	Total
<b>KYANKWANZI</b>						
KIBOGA	BANANYWA	6,904	4.5	16,168	15,123	31,291
KIBOGA	BUTEMBA	7,583	4.6	17,902	16,680	34,582
KIBOGA	BUTEMBA TOWN COUNCIL	3,108	4.5	7,154	6,867	14,021
KIBOGA	GAYAZA	4,747	4.3	10,720	9,723	20,443
KIBOGA	KYANKWANZI	2,406	5.2	6,909	5,964	12,873
KIBOGA	MULAGI	2,849	4.3	6,217	6,455	12,672
KIBOGA	NKANDWA	2,913	4.4	6,585	6,354	12,939
KIBOGA	NSAMBYA	5,780	4.5	13,976	12,570	26,546
KIBOGA	NTWETWE	4,163	4.2	9,166	8,315	17,481
KIBOGA	NTWETWE TOWN COUNCIL	2,752	3.6	5,051	5,094	10,145
KIBOGA	WATTUBA	4,760	4.4	10,732	10,332	21,064
<b>LUWERO</b>						
BAMUNANIKA	BAMUNANIKA	6,734	4.3	14,515	14,763	29,278
BAMUNANIKA	KALAGALA	10,203	4.2	21,878	22,360	44,238
BAMUNANIKA	KAMIRA	5,739	4.6	13,726	12,564	26,290
BAMUNANIKA	KIKYUSA	7,775	4.4	17,205	17,031	34,236
BAMUNANIKA	ZIROBWE	10,522	4.3	22,849	22,948	45,797
KATIKAMU	BOMBO TOWN COUNCIL	6,721	3.8	12,565	13,805	26,370
KATIKAMU	BUTUNTUMULA	7,453	4.6	17,561	17,516	35,077
KATIKAMU	KATIKAMU	9,779	4.4	21,137	22,534	43,671
KATIKAMU	LUWEERO TOWN COUNCIL	11,435	3.6	19,599	23,135	42,734
KATIKAMU	LUWERO	7,276	4.6	17,095	16,672	33,767
KATIKAMU	MAKULUBITA	7,755	4.2	16,722	16,264	32,986
KATIKAMU	NYIMBWA	7,851	4.3	18,599	18,088	36,687
KATIKAMU	WOBULENZI TOWN COUNCIL	6,992	3.8	12,277	14,750	27,027
<b>LWENGO</b>						
BUKOTO	KISEKKA	11,710	4.1	23,467	25,718	49,185
BUKOTO	KKINGO	8,061	4.2	16,674	17,673	34,347
BUKOTO	KYAZANGA	7,269	4.7	16,953	17,794	34,747
BUKOTO	KYAZANGA TOWN COUNCIL	3,745	4.0	7,366	8,165	15,531
BUKOTO	LWENGO	11,094	4.5	24,092	25,840	49,932
BUKOTO	LWENGO TOWN COUNCIL	3,561	4.3	7,259	8,268	15,527
BUKOTO	MALONGO	8,151	4.6	18,030	19,875	37,905
BUKOTO	NDAGWE	8,332	4.6	18,356	19,920	38,276

Note:

MC: Municipality

**Appendix 3 (cont'd): Households and Population by Subcounty/ Town Council/Urban Division and Sex, 2014**

District		Households		POPULATION		
County	Subcounty	Number	Average Size	Males	Females	Total
<b>CENTRAL REGION</b>						
<b>LYANTONDE</b>						
KABULA	KALIIRO	4,078	4.6	8,997	9,611	18,608
KABULA	KASAGAMA	2,218	4.9	5,598	5,297	10,895
KABULA	KINUUKA	1,716	5.1	4,381	4,348	8,729
KABULA	LYANTONDE	3,889	4.8	9,331	9,515	18,846
KABULA	LYANTONDE TOWN COUNCIL	4,155	3.2	6,332	7,254	13,586
KABULA	MPUMUDDE	4,799	5.0	12,064	11,845	23,909
<b>MASAKA</b>						
BUKOTO	BUKAKATA	5,037	3.2	8,882	7,975	16,857
BUKOTO	BUWUNGA	9,907	4.2	20,938	21,429	42,367
BUKOTO	KABONERA	7,537	4.2	15,546	16,941	32,487
BUKOTO	KYANNAMUKAACA	7,415	4.2	15,722	15,818	31,540
BUKOTO	KYESIIGA	6,341	3.9	12,752	12,322	25,074
BUKOTO	MUKUNGWE	10,505	4.1	21,416	23,079	44,495
MASAKA MC	KATWE/BUTEGO	7,154	3.4	11,943	13,371	25,314
MASAKA MC	KIMAANYA/KYABAKUZA	8,862	3.6	16,500	18,132	34,632
MASAKA MC	NYENDO-SSENYANGE	12,548	3.3	20,532	23,351	43,883
<b>MITYANA</b>						
BUSUJJU	BANDA	3,222	4.3	7,098	6,852	13,950
BUSUJJU	BUTAYUNJA	2,623	4.2	5,564	5,433	10,997
BUSUJJU	KAKINDU	4,343	4.1	9,015	8,917	17,932
BUSUJJU	MAANYI	4,998	4.2	10,928	10,356	21,284
BUSUJJU	MALANGALA	5,738	4.1	11,980	12,374	24,354
MITYANA	BULERA	7,442	4.0	15,586	14,589	30,175
MITYANA	BUSIMBI	11,614	4.1	24,073	24,587	48,660
MITYANA	KALANGALO	6,901	4.4	15,625	15,156	30,781
MITYANA	KIKANDWA	7,304	4.0	15,143	14,556	29,699
MITYANA	MITYANA TOWN COUNCIL	13,127	3.5	22,807	25,195	48,002
MITYANA	NAMUNGO	4,167	4.1	8,709	8,400	17,109
MITYANA	SSEKANYONYI	9,043	4.2	19,035	19,288	38,323
<b>MPIGI</b>						
MAWOKOTA	BUWAMA	12,406	4.0	25,228	25,045	50,273
MAWOKOTA	KAMMENGO	8,863	4.2	19,456	18,834	38,290
MAWOKOTA	KIRINGENTE	5,532	3.7	11,309	11,378	22,687
MAWOKOTA	KITUNTU	4,993	4.5	11,318	11,159	22,477
MAWOKOTA	MPIGI TOWN COUNCIL	10,567	4.1	21,991	22,283	44,274
MAWOKOTA	MUDUUMA	7,616	3.9	15,462	14,941	30,403
MAWOKOTA	NKOZI	10,279	4.1	20,550	22,558	43,108

Note:

MC= Municipality

**Appendix 3 (cont'd): Households and Population by Subcounty/ Town Council/Urban Division and Sex, 2014**

District		Households		POPULATION		
County	Subcounty	Number	Average Size	Males	Females	Total
<b>MUBENDE</b>		<b>Central</b>				
BUWEKULA	BUTOLOOGO	9,783	4.5	22,722	21,730	44,452
BUWEKULA	KITENGA	13,734	4.5	32,255	31,297	63,552
BUWEKULA	KIYUNI	8,538	4.2	17,873	17,756	35,629
BUWEKULA	MADUDU	8,544	4.2	18,281	18,250	36,531
BUWEKULA	MUBENDE TOWN COUNCIL	10,428	4.3	22,453	24,468	46,921
KASAMBYA	BAGEZZA	7,880	4.2	16,944	16,528	33,472
KASAMBYA	KASAMBYA	8,491	4.4	20,022	18,867	38,889
KASAMBYA	KIBALINGA	8,427	4.2	17,615	18,295	35,910
KASAMBYA	KIGANDO	8,598	4.8	20,490	21,000	41,490
KASAMBYA	NABINGOOLA	8,238	4.5	17,775	18,932	36,707
KASSANDA	BUKUJYA	7,069	4.4	15,623	16,001	31,624
KASSANDA	KALWANA	7,537	4.5	17,279	16,940	34,219
KASSANDA	KASSANDA	10,087	4.3	21,917	22,173	44,090
KASSANDA	KIGANDA	8,411	4.5	19,088	18,901	37,989
KASSANDA	KITUMBI	11,040	4.5	31,183	27,184	58,367
KASSANDA	MAKOKOTO	1,799	4.4	4,035	3,956	7,991
KASSANDA	MANYOGASEKA	2,348	4.6	6,224	5,373	11,597
KASSANDA	MYANZI	5,037	4.2	10,794	10,677	21,471
KASSANDA	NALUTUNTU	5,996	4.6	13,952	13,966	27,918
<b>MUKONO</b>						
MUKONO	KOOME	6,939	2.7	11,125	8,683	19,808
MUKONO	KYAMPISI	10,486	4.2	22,184	23,131	45,315
MUKONO	MPATTA	4,335	3.9	8,930	8,313	17,243
MUKONO	MPUNGE	3,661	3.9	7,390	7,159	14,549
MUKONO	NAKISUNGA	12,076	4.0	23,968	24,352	48,320
MUKONO	NAMA	13,865	3.9	26,831	28,168	54,999
MUKONO	NTENJERU	10,185	4.0	19,820	20,903	40,723
MUKONO MC	CENTRAL DIVISION	17,338	3.9	32,072	38,156	70,228
MUKONO MC	GOMA DIVISION	21,595	4.1	43,142	48,626	91,768
NAKIFUMA	KASAWO	8,544	4.2	17,522	18,545	36,067
NAKIFUMA	KIMENYEDDE	8,429	4.2	17,232	18,639	35,871
NAKIFUMA	NABBAALE	8,486	4.3	17,924	19,314	37,238
NAKIFUMA	NAGOJJE	8,468	4.0	17,241	17,365	34,606
NAKIFUMA	NTUNDA	3,296	4.6	7,691	7,491	15,182
NAKIFUMA	SEETA-NAMUGANGA	7,872	4.7	18,818	19,082	37,900

*Note:*

*MC= Municipality*

**Appendix 3 (cont'd): Households and Population by Subcounty/ Town Council/Urban Division and Sex, 2014**

District			Households		POPULATION		
	County	Subcounty	Number	Average Size	Males	Females	Total
		<b>Central</b>					
<b>NAKASEKE</b>							
	NAKASEKE	BUTALANGU TOWN COUNCIL	704	4.4	2,147	1,726	3,873
	NAKASEKE	KAPEEKA	5,894	3.9	15,112	11,868	26,980
	NAKASEKE	KASANGOMBE	4,851	4.4	10,929	10,853	21,782
	NAKASEKE	KIKAMULO	4,243	4.3	9,129	9,148	18,277
	NAKASEKE	KINONI	828	6.4	3,451	2,851	6,302
	NAKASEKE	KINYOGOGA	2,139	4.2	7,266	4,382	11,648
	NAKASEKE	KITO	2,294	4.2	5,079	4,732	9,811
	NAKASEKE	KIWOKO TOWN COUNCIL	2,653	4.0	5,356	5,657	11,013
	NAKASEKE	NAKASEKE	4,392	4.3	9,481	9,545	19,026
	NAKASEKE	NAKASEKE TOWN COUNCIL	1,992	3.3	3,487	3,751	7,238
	NAKASEKE	NGOMA	1,138	6.1	4,747	3,388	8,135
	NAKASEKE	NGOMA TOWN COUNCIL	1,602	3.6	3,170	3,125	6,295
	NAKASEKE	SEMUTO	5,531	4.2	12,056	11,506	23,562
	NAKASEKE	SEMUTO TOWN COUNCIL	2,820	3.8	5,559	5,376	10,935
	NAKASEKE	WAKYATO	2,498	4.5	7,127	5,699	12,826
<b>NAKASONGOLA</b>							
	BURULI	KAKOOGA	4,131	4.7	10,402	9,679	20,081
	BURULI	KAKOOGA TOWN COUNCIL	1,986	4.2	4,364	4,385	8,749
	BURULI	KALONGO	3,560	5.4	9,863	9,531	19,394
	BURULI	KALUNGI	4,159	5.7	11,735	12,182	23,917
	BURULI	LWABIYATA	2,939	5.4	7,908	7,947	15,855
	BURULI	LWAMPANGA	6,881	4.2	15,588	14,153	29,741
	BURULI	MIGEERA TOWN COUNCIL	1,499	3.6	2,919	2,859	5,778
	BURULI	NABISWEERA	3,039	5.3	8,798	7,663	16,461
	BURULI	NAKASONGOLA TOWN COUNCIL	2,285	4.0	5,390	4,899	10,289
	BURULI	NAKITOMA	2,677	4.9	6,670	6,615	13,285
	BURULI	WABINYONYI	3,370	5.4	9,320	8,993	18,313
<b>RAKAI</b>							
	KAKUUTO	KAKUUTO	9,366	4.1	19,789	20,038	39,827
	KAKUUTO	KASASA	3,925	4.3	8,357	8,830	17,187
	KAKUUTO	KIBANDA	5,427	4.8	12,818	13,159	25,977
	KAKUUTO	KIFAMBA	3,131	4.6	7,187	7,410	14,597
	KAKUUTO	KYEBE	5,507	3.7	10,410	10,203	20,613
	KOOKI	BYAKABANDA	4,057	4.6	9,228	9,257	18,485
	KOOKI	DDWANIRO	7,149	4.6	16,015	17,006	33,021
	KOOKI	KACHEERA	5,041	4.7	11,656	12,033	23,689
	KOOKI	KAGAMBA	7,196	4.7	16,308	17,550	33,858
	KOOKI	KIZIBA	4,131	5.0	9,999	10,621	20,620

Note:  
MC= Municipality

**Appendix 3 (cont'd): Households and Population by Subcounty/ Town Council/Urban Division and Sex, 2014**

District		Households		POPULATION		
County	Subcounty	Number	Average Size	Males	Females	Total
	<b>Central</b>					
KOOKI	KYALULANGIRA	6,022	4.6	13,478	14,342	27,820
KOOKI	LWAMAGWA	9,494	4.6	21,534	22,663	44,197
KOOKI	LWANDA	6,427	4.4	14,049	14,558	28,607
KOOKI	RAKAI TOWN COUNCIL	1,645	4.2	3,708	3,884	7,592
KYOTERA	KABIRA	6,738	4.5	15,613	15,381	30,994
KYOTERA	KALISIZO	4,095	4.3	8,804	9,171	17,975
KYOTERA	KALISIZO TOWN COUNCIL	3,589	3.6	6,110	7,354	13,464
KYOTERA	KASAALI	6,224	4.1	13,020	13,345	26,365
KYOTERA	KIRUMBA	5,852	4.2	11,943	12,879	24,822
KYOTERA	KYOTERA TOWN COUNCIL	3,949	3.1	5,665	7,124	12,789
KYOTERA	LWANKONI	3,397	4.3	7,306	7,587	14,893
KYOTERA	NABIGASA	4,715	4.3	10,057	10,559	20,616
	<b>SSEMBABULE</b>					
LWEMİYAGA	LWEMİYAGA	7,601	4.8	18,467	18,402	36,869
LWEMİYAGA	NTUSI	5,205	4.7	12,699	11,779	24,478
MAWOGOLA	LUGUSULU	6,647	4.7	16,086	15,374	31,460
MAWOGOLA	LWEBITAKULI	13,257	4.6	29,959	31,344	61,303
MAWOGOLA	MATEETE	11,675	4.4	25,370	26,668	52,038
MAWOGOLA	MATEETE TOWN COUNCIL	2,755	3.6	4,812	5,517	10,329
MAWOGOLA	MIJWALA	6,546	4.5	14,743	15,079	29,822
MAWOGOLA	SEMBABULE TOWN COUNCIL	1,852	3.5	3,259	3,436	6,695
	<b>WAKISO</b>					
BUSIRO	BUSSI	5,053	3.2	8,879	7,581	16,460
BUSIRO	KAKIRI	9,991	3.8	19,849	19,342	39,191
BUSIRO	KAKIRI TOWN COUNCIL	4,727	3.8	9,444	10,005	19,449
BUSIRO	KASANJE	7,825	3.8	15,226	15,050	30,276
BUSIRO	KATABI	28,546	3.5	48,946	55,389	104,335
BUSIRO	MASULITA	2,474	4.3	5,528	5,059	10,587
BUSIRO	MASULITA TOWN COUNCIL	3,590	4.0	7,359	7,403	14,762
BUSIRO	MENDE	6,277	4.2	13,268	13,495	26,763
BUSIRO	NAMAYUMBA	4,500	3.9	10,080	8,602	18,682
BUSIRO	NAMAYUMBA TOWN COUNCIL	3,995	3.8	7,578	7,627	15,205
BUSIRO	NSANGI	48,299	4.0	94,108	103,883	197,991
BUSIRO	SSISA	23,992	3.8	45,272	47,966	93,238
BUSIRO	WAKISO	42,389	4.1	82,857	94,113	176,970
BUSIRO	WAKISO TOWN COUNCIL	14,557	4.1	28,712	32,199	60,911
ENTEBBE MC	DIVISION A	9,659	3.9	18,870	19,983	38,853
ENTEBBE MC	DIVISION B	7,950	3.8	14,484	16,621	31,105
KYADONDO	BUSUKUMA	9,853	3.8	18,935	18,955	37,890
KYADONDO	GOMBE	19,373	3.9	37,134	39,629	76,763

Note:  
MC= Municipality

**Appendix 3 (cont'd): Households and Population by Subcounty/ Town Council/Urban Division and Sex, 2014**

District		Households			POPULATION	
County	Subcounty	Number	Average Size	Males	Females	Total
	<b>Central</b>					
KYADONDO	KIRA TOWN COUNCIL	82,921	3.8	146,985	166,776	313,761
KYADONDO	MAKIDYE-SSABAGABO	70,862	3.9	133,079	150,988	284,067
KYADONDO	NABWERU	26,729	4.0	51,222	58,378	109,600
KYADONDO	NANGABO	35,612	4.0	68,847	77,553	146,400
KYADONDO	NANSANA TOWN COUNCIL	35,446	4.0	66,119	78,322	144,441
<b>EASTERN REGION</b>						
<b>AMURIA</b>						
AMURIA	ABARILELA	4,190	5.9	11,707	12,912	24,619
AMURIA	AKERIAU	2,492	5.7	6,776	7,350	14,126
AMURIA	AMURIA TOWN COUNCIL	1,757	3.9	3,523	3,543	7,066
AMURIA	APEDURU	2,343	5.9	6,735	7,152	13,887
AMURIA	ASAMUK	3,697	5.8	10,469	11,021	21,490
AMURIA	KUJU	3,168	5.7	8,891	9,220	18,111
AMURIA	MORUNGATUNY	3,072	5.7	8,507	8,872	17,379
AMURIA	OGOLAI	2,377	5.7	6,829	7,295	14,124
AMURIA	ORUNGO	2,653	5.6	7,217	7,591	14,808
AMURIA	WERA	4,249	5.6	11,531	12,399	23,930
AMURIA	WILLA	2,293	5.9	6,391	7,075	13,466
KAPELEBYONG	ACOWA	3,474	5.3	9,147	9,436	18,583
KAPELEBYONG	AKOROMIT	3,126	5.7	8,705	9,230	17,935
KAPELEBYONG	KAPELEBYONG	3,616	5.4	9,705	9,830	19,535
KAPELEBYONG	OBALANGA	3,350	5.4	8,867	9,443	18,310
KAPELEBYONG	OKUNGUR	2,545	5.2	6,533	6,699	13,232
<b>BUDAKA</b>						
BUDAKA	BUDAKA	1,929	5.7	5,295	5,761	11,056
BUDAKA	BUDAKA TOWN COUNCIL	4,529	5.2	11,281	12,553	23,834
BUDAKA	KACHOMO	2,646	5.5	6,985	7,603	14,588
BUDAKA	KADERUNA	3,235	5.5	8,386	9,321	17,707
BUDAKA	KAKULE	2,172	5.8	5,970	6,646	12,616
BUDAKA	LYAMA	3,173	5.9	9,146	9,600	18,746
BUDAKA	NABOA	2,498	5.5	6,596	7,284	13,880
BUDAKA	NANSANGA	1,720	5.6	4,713	4,934	9,647
IKI IKI	IKI-IKI	3,335	5.6	8,937	9,728	18,665
IKI IKI	KAMERUKA	2,560	5.8	7,223	7,632	14,855
IKI IKI	KAMONKOLI	4,511	5.5	12,092	12,949	25,041
IKI IKI	KATIIRA	2,836	5.7	7,885	8,324	16,209
IKI IKI	MUGITI	2,103	5.5	5,687	5,908	11,595

Note:  
MC= Municipality

**Appendix 3 (cont'd): Households and Population by Subcounty/ Town Council/Urban Division and Sex, 2014**

District		Households		POPULATION		
County	Subcounty	Number	Average Size	Males	Females	Total
<b>BUDUDA</b>						
MANJIYA	BUBIITA.	1,605	4.5	3,521	3,624	7,145
MANJIYA	BUDUDA TOWN COUNCIL.	1,234	5.3	3,398	3,332	6,730
MANJIYA	BUDUDA.	2,257	4.8	5,405	5,455	10,860
MANJIYA	BUKALASI.	2,686	4.9	6,622	6,561	13,183
MANJIYA	BUKIBOKOLO	1,775	5.7	5,053	5,047	10,100
MANJIYA	BUKIGAI	2,779	6.4	8,656	9,083	17,739
MANJIYA	BULUKECHEKE	2,378	6.2	7,677	7,184	14,861
MANJIYA	BUMASHETI	2,433	6.5	8,174	7,743	15,917
MANJIYA	BUMAYOKA.	2,966	6.6	9,689	9,742	19,431
MANJIYA	BUSHIKA	5,215	6.0	15,613	15,917	31,530
MANJIYA	BUSHIRIBO	1,868	5.8	5,765	5,734	11,499
MANJIYA	BUSHIYI	2,961	5.3	7,870	8,053	15,923
MANJIYA	BUWALI.	1,271	5.0	3,240	3,135	6,375
MANJIYA	NABWEYA	2,062	5.1	5,271	5,187	10,458
MANJIYA	NAKATSI	1,937	5.7	5,467	5,511	10,978
MANJIYA	NALWANZA	1,601	5.6	4,517	4,437	8,954
<b>BUGIRI</b>						
BUKOOLI (NORTH)	BUDHAYA	5,205	5.5	13,843	14,636	28,479
BUKOOLI (NORTH)	BUGIRI TOWN COUNCIL	7,124	4.0	13,524	15,489	29,013
BUKOOLI (NORTH)	BULESA	7,977	5.0	19,431	20,932	40,363
BUKOOLI (NORTH)	BULIDHA	4,921	5.2	12,398	13,208	25,606
BUKOOLI (NORTH)	BULUGUYI	6,384	5.0	15,570	16,423	31,993
BUKOOLI (NORTH)	BUWUNGA	8,970	5.2	22,687	24,292	46,979
BUKOOLI (NORTH)	IWEMBA	3,799	5.3	9,891	10,108	19,999
BUKOOLI (NORTH)	KAPYANGA	11,415	5.3	29,361	31,350	60,711
BUKOOLI (NORTH)	MUTERERE	5,343	5.2	13,550	14,478	28,028
BUKOOLI (NORTH)	NABUKALU	6,735	5.5	18,122	18,685	36,807
BUKOOLI (NORTH)	NANKOMA	8,048	5.2	20,085	22,013	42,098
<b>BUKEDEA</b>						
BUKEDEA	BUKEDEA	4,894	6.2	14,526	15,729	30,255
BUKEDEA	BUKEDEA TOWN COUNCIL	992	6.3	3,025	3,244	6,269
BUKEDEA	KACHUMBALA	9,331	5.4	23,985	26,181	50,166
BUKEDEA	KIDONGOLE	4,525	6.0	12,868	14,113	26,981
BUKEDEA	KOLIR	5,690	5.5	15,255	15,986	31,241
BUKEDEA	MALERA	7,626	5.8	21,137	22,869	44,006

Note:  
MC= Municipality



**Appendix 3 (cont'd): Households and Population by Subcounty/ Town Council/Urban Division and Sex, 2014**

District		Households		POPULATION		
County	Subcounty	Number	Average Size	Males	Females	Total
<b>BUKWO</b>						
KONGASIS	BUKWO	1,468	5.6	4,276	4,205	8,481
KONGASIS	BUKWO TOWN COUNCIL	1,406	5.4	3,825	3,861	7,686
KONGASIS	CHEPKWASTA	1,521	5.6	4,259	4,302	8,561
KONGASIS	CHESOWER	1,162	5.7	3,348	3,279	6,627
KONGASIS	KABEI	1,204	5.2	3,147	3,216	6,363
KONGASIS	KAMET	971	5.4	2,675	2,584	5,259
KONGASIS	KAPTERERWO	1,772	5.0	4,447	4,362	8,809
KONGASIS	KORTEK	1,043	5.5	2,891	2,945	5,836
KONGASIS	RIWO	1,305	5.3	3,563	3,332	6,895
KONGASIS	SENEDET	1,507	5.8	4,345	4,459	8,804
KONGASIS	SUAM	2,294	4.7	5,420	5,274	10,694
KONGASIS	TULEL	946	5.5	2,574	2,664	5,238
<b>BULAMBULI</b>						
BULAMBULI	BUGINYANYA	1,147	4.8	2,819	2,711	5,530
BULAMBULI	BUKHALU	4,589	5.6	12,429	13,244	25,673
BULAMBULI	BULAAGO	1,995	4.7	4,817	4,639	9,456
BULAMBULI	BULAMBULI TOWN COUNCIL	754	6.7	2,504	2,572	5,076
BULAMBULI	BULEGENI	770	5.8	2,163	2,307	4,470
BULAMBULI	BULEGENI TOWN COUNCIL	1,251	8.7	4,962	6,129	11,091
BULAMBULI	BULUGANYA	2,028	4.4	4,412	4,539	8,951
BULAMBULI	BUMASOBO	1,746	4.6	4,113	4,009	8,122
BULAMBULI	BUMUGIBOLE	1,625	4.1	3,419	3,278	6,697
BULAMBULI	BUNAMBUTYE	1,935	4.4	4,405	4,143	8,548
BULAMBULI	BWIKHONGE	1,690	4.6	3,884	3,999	7,883
BULAMBULI	KAMU	1,173	5.3	2,913	3,358	6,271
BULAMBULI	LUSHA	2,684	5.8	7,291	8,188	15,479
BULAMBULI	MASIIRA	2,135	4.6	4,832	4,938	9,770
BULAMBULI	MUYEMBE	1,587	4.9	3,797	3,993	7,790
BULAMBULI	NABONGO	2,067	4.6	4,789	4,811	9,600
BULAMBULI	NAMISUNI	1,035	8.5	4,078	4,689	8,767
BULAMBULI	SIMU	780	6.8	1,917	3,454	5,371
BULAMBULI	SISIYI	3,001	4.3	6,293	6,484	12,777

Note:  
MC= Municipality

**Appendix 3 (cont'd): Households and Population by Subcounty/ Town Council/Urban Division and Sex, 2014**

District			Households		POPULATION		
	County	Subcounty	Number	Average Size	Males	Females	Total
<b>BUSIA</b>							
	BUSIA MC	EASTERN DIVISION	8,175	4.0	15,389	17,610	32,999
	BUSIA MC	WESTERN DIVISION	5,508	4.1	10,752	12,207	22,959
	SAMIA-BUGWE	BUHEHE	3,978	5.0	9,505	10,394	19,899
	SAMIA-BUGWE	BULUMBI	3,060	5.0	7,262	7,979	15,241
	SAMIA-BUGWE	BUSIME	3,442	5.4	8,860	9,619	18,479
	SAMIA-BUGWE	BUSITEMA	3,256	5.2	8,578	8,827	17,405
	SAMIA-BUGWE	BUTEBA	5,329	5.2	13,275	14,266	27,541
	SAMIA-BUGWE	BUYANGA	3,500	5.4	9,353	9,673	19,026
	SAMIA-BUGWE	DABANI	5,382	5.2	14,257	14,965	29,222
	SAMIA-BUGWE	LUMINO	3,039	4.8	6,996	7,628	14,624
	SAMIA-BUGWE	LUNYO	3,058	4.9	7,196	7,778	14,974
	SAMIA-BUGWE	MAJANJI	2,135	5.3	5,354	5,920	11,274
	SAMIA-BUGWE	MASABA	4,581	5.1	11,212	12,138	23,350
	SAMIA-BUGWE	MASAFU	3,764	5.3	9,775	10,446	20,221
	SAMIA-BUGWE	MASINYA	3,746	5.2	9,485	10,236	19,721
	SAMIA-BUGWE	SIKUDA	3,534	5.3	9,059	9,533	18,592
<b>BUTALEJA</b>							
	BUNYOLE	BUDUMBA	3,918	5.7	10,644	11,668	22,312
	BUNYOLE	BUSABA	4,288	5.8	12,041	12,772	24,813
	BUNYOLE	BUSABI	3,236	5.5	8,644	9,347	17,991
	BUNYOLE	BUSOLWE	2,701	5.5	7,094	7,711	14,805
	BUNYOLE	BUSOLWE TOWN COUNCIL	2,780	6.0	7,962	8,768	16,730
	BUNYOLE	BUTALEJA	2,825	5.6	7,776	8,025	15,801
	BUNYOLE	BUTALEJA TOWN COUNCIL	3,448	5.7	9,544	9,975	19,519
	BUNYOLE	HIMUTU	2,678	5.5	7,236	7,566	14,802
	BUNYOLE	KACHONGA	4,401	5.6	12,026	12,647	24,673
	BUNYOLE	MAZIMASA	6,200	5.3	15,823	16,935	32,758
	BUNYOLE	NAWANJOFU	3,759	5.2	9,477	10,003	19,480
	BUNYOLE	NAWEYO	4,077	5.4	10,801	11,388	22,189
<b>BUYENDE</b>							
	BUDIOPE	BUGAYA	16,218	5.1	40,178	42,961	83,139
	BUDIOPE	BUYENDE	7,928	5.3	20,732	21,721	42,453
	BUDIOPE	BUYENDE TOWN COUNCIL	4,433	5.2	11,360	11,679	23,039
	BUDIOPE	KAGULU	13,941	5.5	36,571	40,061	76,632
	BUDIOPE	KIDERA	12,728	5.1	31,729	33,019	64,748
	BUDIOPE	NKONDO	5,570	5.5	14,683	15,774	30,457

Note:  
MC= Municipality

**Appendix 3 (cont'd): Households and Population by Subcounty/ Town Council/Urban Division and Sex, 2014**

District		Households		POPULATION		
County	Subcounty	Number	Average Size	Males	Females	Total
<b>Eastern</b>						
<b>IGANGA</b>						
BUGWERI	BUSEMBATIA TOWN COUNCIL	2,700	5.3	6,768	7,663	14,431
BUGWERI	BUYANGA	10,750	4.8	24,881	26,531	51,412
BUGWERI	IBULANKU	6,753	5.0	16,558	17,652	34,210
BUGWERI	IGOMBE	3,793	4.5	8,223	8,952	17,175
BUGWERI	MAKUUTU	5,203	5.4	13,490	14,502	27,992
BUGWERI	NAMALEMBA	4,461	5.3	11,426	12,221	23,647
IGANGA MC	CENTRAL DIVISION	7,827	3.8	13,673	16,718	30,391
IGANGA MC	NORTHERN DIVISION	5,975	3.9	10,717	12,762	23,479
KIGULU	BULAMOGI	5,882	5.0	14,549	15,466	30,015
KIGULU	NABITENDE	5,225	5.4	13,655	14,515	28,170
KIGULU	NAKALAMA	9,167	4.9	21,485	23,649	45,134
KIGULU	NAKIGO	7,433	5.1	18,441	19,795	38,236
KIGULU	NAMBALE	9,403	5.0	22,394	24,721	47,115
KIGULU	NAMUNGALWE	7,638	4.9	17,729	19,668	37,397
KIGULU	NAWANDALA	5,736	5.4	15,156	16,146	31,302
KIGULU	NAWANYINGI	4,951	5.3	12,878	13,404	26,282
<b>JINJA</b>						
BUTEMBE	BUGEMBE TOWN COUNCIL	11,107	3.6	19,470	21,853	41,323
BUTEMBE	BUSEDDE	6,734	5.3	17,494	18,658	36,152
BUTEMBE	KAKIRA TOWN COUNCIL	8,616	3.8	17,381	15,438	32,819
BUTEMBE	MAFUBIRA	17,964	4.3	37,771	41,124	78,895
JINJA MC	JINJA CENTRAL DIVISION	4,924	3.7	11,193	10,254	21,447
JINJA MC	KIMAKA/MPUMUDDE/ NALUFENYA DIVISION	5,884	3.5	11,230	11,234	22,464
JINJA MC	MASESE/WALUKUBA DIVISION	8,128	3.5	14,236	14,784	29,020
KAGOMA	BUDONDO	10,177	5.1	24,843	26,717	51,560
KAGOMA	BUTAGAYA	10,317	5.1	25,242	27,703	52,945
KAGOMA	BUWENGE	9,704	4.8	22,487	24,498	46,985
KAGOMA	BUWENGE TOWN COUNCIL	5,327	4.1	10,248	11,826	22,074
KAGOMA	BUYENGO	6,264	5.2	16,014	16,558	32,572
<b>KABERAMAIDO</b>						
KABERAMAIDO	ALWA	4,279	5.4	11,373	12,081	23,454
KABERAMAIDO	APERIKIRA	2,456	5.7	6,936	7,144	14,080
KABERAMAIDO	KABERAMAIDO	3,229	5.5	8,650	9,080	17,730
KABERAMAIDO	KABERAMAIDO TOWN COUNCIL	1,069	3.5	1,899	2,111	4,010
KABERAMAIDO	KOBULUBULU	3,379	5.4	9,096	9,350	18,446
KABERAMAIDO	OCHERO	4,583	5.7	12,639	13,437	26,076
KALAKI	ANYARA	4,004	5.5	10,692	11,189	21,881
KALAKI	APAPAI	1,936	5.6	5,247	5,542	10,789

Note:  
MC: Municipality

**Appendix 3 (cont'd): Households and Population by Subcounty/ Town Council/Urban Division and Sex, 2014**

District		Households		POPULATION		
County	Subcounty	Number	Average Size	Males	Females	Total
<b>Eastern</b>						
KALAKI	APAPAI	1,936	5.6	5,247	5,542	10,789
KALAKI	BULULU	3,691	5.8	10,473	10,920	21,393
KALAKI	KAKURE	2,112	6.0	6,142	6,471	12,613
KALAKI	KALAKI	2,932	5.6	8,323	8,411	16,734
KALAKI	OTUBOI	4,851	5.3	12,600	13,568	26,168
<b>KALIRO</b>						
BULAMOGI	BUMANYA	8,754	5.6	23,873	25,624	49,497
BULAMOGI	GADUMIRE	6,500	5.5	17,516	18,049	35,565
BULAMOGI	KALIRO TOWN COUNCIL	3,792	4.2	8,055	8,741	16,796
BULAMOGI	NAMUGONGO	6,411	5.4	17,453	18,009	35,462
BULAMOGI	NAMWIWA	6,375	5.6	17,424	18,598	36,022
BULAMOGI	NAWAIKOKE	11,390	5.6	30,839	32,746	63,585
<b>KAMULI</b>						
BUGABULA	BALAWOLI	10,048	5.4	26,412	27,680	54,092
BUGABULA	BULOPA	4,553	6.2	14,280	14,592	28,872
BUGABULA	BUTANSI	5,522	5.4	14,371	15,428	29,799
BUGABULA	KAMULI TOWN COUNCIL	4,659	3.6	8,000	9,725	17,725
BUGABULA	KITAYUNJWA	10,739	5.1	26,590	28,658	55,248
BUGABULA	NABWIGULU	10,107	4.9	24,433	26,055	50,488
BUGABULA	NAMASAGALI	6,960	5.3	18,563	18,961	37,524
BUGABULA	NAMWENDWA	11,204	5.0	27,343	29,495	56,838
BUZAAYA	BUGULUMBYA	6,968	5.2	17,405	19,039	36,444
BUZAAYA	KISOZI	8,920	5.3	22,767	24,673	47,440
BUZAAYA	MBULAMUTI	5,580	5.5	14,782	16,081	30,863
BUZAAYA	NAWANYAGO	4,639	5.2	11,343	12,715	24,058
BUZAAYA	WANKOLE	3,890	5.3	9,861	11,003	20,864
<b>KAPCHORWA</b>						
TINGEY	AMUKOL	829	4.6	1,834	1,958	3,792
TINGEY	CHEMA	1,764	4.9	4,255	4,475	8,730
TINGEY	CHEPTERET	571	7.0	2,015	2,009	4,024
TINGEY	GAMOGO	719	4.6	1,650	1,658	3,308
TINGEY	KABEYWA	1,251	4.3	2,668	2,661	5,329
TINGEY	KAPCHESOMBE	1,467	5.2	3,881	3,724	7,605
TINGEY	KAPCHORWA TOWN COUNCIL	2,973	4.0	5,958	6,387	12,345
TINGEY	KAPSINDA	1,364	5.0	3,394	3,439	6,833
TINGEY	KAPTANYA	2,117	5.1	5,204	5,574	10,778
TINGEY	KAPTERET	2,141	5.0	5,131	5,553	10,684
TINGEY	KASEREM	961	4.9	2,233	2,465	4,698
TINGEY	KAWOWO	1,428	4.9	3,408	3,573	6,981

Note:  
MC= Municipality

**Appendix 3 (cont'd): Households and Population by Subcounty/ Town Council/Urban Division and Sex, 2014**

District		Households		POPULATION		
County	Subcounty	Number	Average Size	Males	Females	Total
<b>Eastern</b>						
TINGEY	KAWOWO	1,428	4.9	3,408	3,573	6,981
TINGEY	MUNARYA	1,207	4.5	2,641	2,810	5,451
TINGEY	SIPI	1,092	4.6	2,523	2,515	5,038
TINGEY	TEGERES	1,768	5.1	4,374	4,610	8,984
<b>KATAKWI</b>						
TOROMA	KAPUJAN	2,490	5.8	6,979	7,489	14,468
TOROMA	MAGORO	3,467	5.3	9,058	9,506	18,564
TOROMA	OMODOI	2,972	5.7	8,187	8,879	17,066
TOROMA	TOROMA	2,178	5.4	5,773	6,052	11,825
USUK	KATAKWI	6,785	5.3	17,570	19,211	36,781
USUK	KATAKWI TOWN COUNCIL	1,710	3.8	3,343	3,604	6,947
USUK	NGARIAM	1,869	4.7	4,298	4,529	8,827
USUK	ONGONGOJA	2,986	5.6	8,342	8,320	16,662
USUK	PALAM	2,484	4.9	7,048	6,177	13,225
USUK	USUK	3,780	5.6	10,247	10,941	21,188
<b>KIBUKU</b>						
KIBUKU	BULANGIRA	4,279	5.6	11,737	12,523	24,260
KIBUKU	BUSETA	2,788	6.0	7,967	8,742	16,709
KIBUKU	KABWERI	2,685	6.0	7,591	8,572	16,163
KIBUKU	KADAMA	3,669	5.5	9,518	10,570	20,088
KIBUKU	KAGUMU	4,769	5.7	13,088	14,241	27,329
KIBUKU	KASASIRA	3,993	5.4	10,594	11,246	21,840
KIBUKU	KIBUKU	2,220	5.7	6,081	6,570	12,651
KIBUKU	KIBUKU TOWN COUNCIL	1,619	5.2	3,974	4,504	8,478
KIBUKU	KIRIKA	3,953	6.0	11,339	12,210	23,549
KIBUKU	TIRINYI	5,892	5.3	15,119	16,444	31,563
<b>KUMI</b>						
KUMI	ATUTUR	5,980	6.0	17,504	18,279	35,783
KUMI	KANYUM	7,012	5.9	20,013	21,728	41,741
KUMI	KUMI	6,047	6.1	18,120	18,960	37,080
KUMI	KUMI TOWN COUNCIL	2,810	3.9	5,483	5,980	11,463
KUMI	MUKONGORO	8,808	6.1	26,003	27,463	53,466
KUMI	NYERO	6,227	5.8	17,698	18,929	36,627
KUMI	ONGINO	7,080	5.9	20,468	21,445	41,913
<b>KWEEN</b>						
KWEEN	BENET	1,957	5.8	5,639	5,675	11,314
KWEEN	BINYINY	978	5.2	2,516	2,568	5,084
KWEEN	BINYINY TOWN COUNCIL	664	5.3	1,755	1,821	3,576
KWEEN	KAPRORON	965	5.9	3,162	2,585	5,747
KWEEN	KAPTOYOY	1,599	5.3	4,142	4,294	8,436

Note:  
MC= Municipality

**Appendix 3 (cont'd): Households and Population by Subcounty/ Town Council/Urban Division and Sex, 2014**

District	County	Subcounty	Households		POPULATION		
			Number	Average Size	Males	Females	Total
		<b>Eastern</b>					
	KWEEN	KAPTUM	1,863	5.1	4,690	4,778	9,468
	KWEEN	KIRIKI	1,107	4.0	2,417	1,981	4,398
	KWEEN	KITAWOI	1,381	5.7	3,855	4,051	7,906
	KWEEN	KWANYIY	1,822	5.7	5,190	5,139	10,329
	KWEEN	KWOSIR	2,131	5.8	6,126	6,284	12,410
	KWEEN	MOYOK	1,176	4.8	2,877	2,904	5,781
	KWEEN	NGENGE	2,595	4.2	6,210	4,964	11,174
<b>LUUKA</b>							
	LUUKA	BUKANGA	7,922	5.3	20,067	21,755	41,822
	LUUKA	BUKOOMA	7,122	5.4	19,107	19,942	39,049
	LUUKA	BULONGO	5,157	5.5	13,506	14,766	28,272
	LUUKA	IKUMBYA	6,254	5.5	16,860	17,847	34,707
	LUUKA	IRONGO	5,262	5.4	13,993	14,698	28,691
	LUUKA	LUUKA TOWN COUNCIL	2,070	4.8	5,005	5,332	10,337
	LUUKA	NAWAMPITI	3,920	5.5	10,277	11,192	21,469
	LUUKA	WAIBUGA	7,287	5.1	17,775	19,331	37,106
<b>MANAFWA</b>							
	BUBULO	BUBUTU	4,481	5.2	11,370	11,831	23,201
	BUBULO	BUGOBERO	2,711	5.0	6,467	7,020	13,487
	BUBULO	BUKHABUSI	2,094	4.6	4,837	4,899	9,736
	BUBULO	BUKHAWEKA	1,907	4.7	4,411	4,528	8,939
	BUBULO	BUKHOFU	1,510	4.9	3,541	3,815	7,356
	BUBULO	BUKIABI	2,425	4.7	5,475	5,985	11,460
	BUBULO	BUKOKHO	3,726	5.2	9,445	9,930	19,375
	BUBULO	BUKUSU	2,018	4.8	4,756	4,980	9,736
	BUBULO	BUMBO	3,226	5.2	8,218	8,503	16,721
	BUBULO	BUMWONI	3,970	4.9	9,282	10,104	19,386
	BUBULO	BUNABWANA	2,481	4.9	5,833	6,221	12,054
	BUBULO	BUPOTO	2,875	4.8	6,752	6,950	13,702
	BUBULO	BUSUKUYA	2,768	4.7	6,301	6,728	13,029
	BUBULO	BUTIRU	3,491	5.1	8,635	9,050	17,685
	BUBULO	BUTTA	1,002	4.7	2,256	2,501	4,757
	BUBULO	BUWABWALA	1,805	3.9	3,328	3,737	7,065
	BUBULO	BUWAGOGO	1,528	4.5	3,324	3,549	6,873
	BUBULO	KAATO	1,928	4.6	4,405	4,532	8,937
	BUBULO	KHABUTOOLA	3,107	4.8	7,131	7,755	14,886
	BUBULO	LWAKHAKHA TOWN COUNCIL	2,035	4.4	4,408	4,653	9,061
	BUBULO	MAGALE	4,284	4.8	10,103	10,779	20,882
	BUBULO	MANAFWA TOWN COUNCIL	3,033	4.4	6,645	7,055	13,700
	BUBULO	MUKOTO	1,719	4.7	3,985	4,043	8,028
	BUBULO	NALONDO	1,236	4.8	2,905	2,999	5,904

Note:  
MC= Municipality

**Appendix 3 (cont'd): Households and Population by Subcounty/ Town Council/Urban Division and Sex, 2014**

District		Households		POPULATION		
County	Subcounty	Number	Average Size	Males	Females	Total
<b>Eastern</b>						
BUBULO	NAMABYA	2,155	5.0	5,228	5,463	10,691
BUBULO	NAMBOKO	1,838	5.6	5,062	5,211	10,273
BUBULO	SIBANGA	1,580	4.9	3,695	4,004	7,699
BUBULO	SISUNI	815	5.0	1,919	2,125	4,044
BUBULO	TSEKULULU	3,493	4.8	8,289	8,337	16,626
BUBULO	WESWA	1,499	5.1	3,739	3,832	7,571
<b>MAYUGE</b>						
BUNYA	BAITAMBOGWE	8,004	4.8	18,511	19,649	38,160
BUNYA	BUKABOOLI	8,527	5.2	21,413	22,841	44,254
BUNYA	BUKATUBE	8,156	5.0	19,974	21,135	41,109
BUNYA	BUSAKIRA	5,545	5.5	14,723	15,566	30,289
BUNYA	BUWAAYA	4,001	5.3	10,203	11,145	21,348
BUNYA	IMANYIRO	5,785	5.5	15,659	16,416	32,075
BUNYA	JAGUZI	3,761	3.5	6,713	6,504	13,217
BUNYA	KIGANDALO	5,854	5.4	15,427	16,200	31,627
BUNYA	KITYERERA	8,598	5.5	23,100	24,220	47,320
BUNYA	MALONGO	22,320	4.6	50,283	52,241	102,524
BUNYA	MAYUGE TOWN COUNCIL	4,397	3.9	8,058	9,093	17,151
BUNYA	MPUNGWE	4,880	5.3	12,344	13,612	25,956
BUNYA	WAIRASA	7,685	4.4	16,669	17,473	34,142
<b>MBALE</b>						
BUNGOKHO	BUBYANGU	4,274	4.9	10,114	10,783	20,897
BUNGOKHO	BUDWALE	1,575	4.9	3,838	3,919	7,757
BUNGOKHO	BUFUMBO	3,117	5.5	8,107	8,945	17,052
BUNGOKHO	BUKASAKYA	7,802	4.2	15,888	17,096	32,984
BUNGOKHO	BUKHIENDE	4,708	4.7	10,765	11,407	22,172
BUNGOKHO	BUKONDE	3,958	4.9	9,288	9,983	19,271
BUNGOKHO	BUMASIKYE	2,497	4.8	5,856	6,258	12,114
BUNGOKHO	BUMBOBI	3,459	4.6	7,620	8,176	15,796
BUNGOKHO	BUNGOKHO	6,277	4.5	13,475	14,628	28,103
BUNGOKHO	BUNGOKHO MUTOTO	8,255	4.2	16,904	17,843	34,747
BUNGOKHO	BUSANO	3,132	4.7	7,305	7,432	14,737
BUNGOKHO	BUSIU	5,058	4.7	11,675	12,177	23,852
BUNGOKHO	BUSOBA	4,596	4.7	10,511	11,329	21,840
BUNGOKHO	LUKHONGE	2,065	4.7	4,755	5,027	9,782
BUNGOKHO	LWASSO	1,712	5.3	4,475	4,550	9,025
BUNGOKHO	NAKALOKE	4,553	4.9	10,747	11,947	22,694
BUNGOKHO	NAKALOKE TOWN COUNCIL	5,661	4.8	12,994	14,538	27,532
BUNGOKHO	NAMANYONYI	6,736	4.5	14,971	15,741	30,712
BUNGOKHO	NYONDO	2,529	4.7	5,881	6,406	12,287

Note:  
MC= Municipality

**Appendix 3 (cont'd): Households and Population by Subcounty/ Town Council/Urban Division and Sex, 2014**

District	County	Subcounty	Households		POPULATION		
			Number	Average Size	Males	Females	Total
		<b>Eastern</b>					
	BUNGOKHO	WANALE	2,699	4.9	6,510	6,751	13,261
	MBALE MC	INDUSTRIAL DIVISION	10,722	3.8	20,638	21,672	42,310
	MBALE MC	NORTHERN DIVISION	10,546	3.4	18,440	20,636	39,076
	MBALE MC	WANALE DIVISION	3,606	4.0	6,853	7,950	14,803
		<b>NAMAYINGO</b>					
	BUKOOLI	BANDA	8,187	5.4	21,400	22,717	44,117
	BUKOOLI	BUGANA	1,692	4.9	4,208	4,217	8,425
	BUKOOLI	BUHEMBA	5,824	5.4	15,060	16,412	31,472
	BUKOOLI	BUSWALE	5,611	4.9	13,387	13,916	27,303
	BUKOOLI	BUYINJA	4,577	5.5	12,027	13,167	25,194
	BUKOOLI	LOLWE	3,985	3.0	6,279	5,870	12,149
	BUKOOLI	MUTUMBA	7,798	5.4	20,667	21,644	42,311
	BUKOOLI	NAMAYINGO TOWN COUNCIL	3,206	4.9	7,339	8,402	15,741
	BUKOOLI	SIGULU ISLANDS	3,933	4.0	8,554	7,963	16,517
		<b>NAMUTUMBA</b>					
	BUSIKI	BULANGE	7,827	5.7	21,788	23,008	44,796
	BUSIKI	IVUKULA	7,862	5.7	21,841	22,947	44,788
	BUSIKI	KIBAALE	5,778	5.6	15,743	16,837	32,580
	BUSIKI	MAGADA	7,614	6.4	23,858	25,132	48,990
	BUSIKI	NAMUTUMBA	6,725	5.6	18,192	19,344	37,536
	BUSIKI	NAMUTUMBA TOWN COUNCIL	4,085	4.5	8,957	9,779	18,736
	BUSIKI	NSINZE	4,574	5.6	12,632	13,202	25,834
		<b>NGORA</b>					
	NGORA	KAPIR	5,331	6.0	15,184	17,004	32,188
	NGORA	KOBWIN	5,194	6.5	16,309	17,656	33,965
	NGORA	MUKURA	5,711	5.7	15,764	16,972	32,736
	NGORA	NGORA	4,617	6.2	13,686	14,826	28,512
	NGORA	NGORA TOWN COUNCIL	2,687	5.2	7,274	7,812	15,086
		<b>PALLISA</b>					
	AGULE	AGULE	2,912	6.2	8,810	9,442	18,252
	AGULE	AKISIM	2,547	5.1	6,452	6,656	13,108
	AGULE	APOPONG	4,721	5.8	13,267	13,933	27,200
	AGULE	CHELEKURA	1,962	6.0	5,665	6,072	11,737
	AGULE	GOGONYO	4,914	6.0	14,408	15,160	29,568
	AGULE	KAMEKE	2,795	6.2	8,432	8,841	17,273
	BUTEBO	BUTEBO	4,794	6.0	13,811	14,968	28,779
	BUTEBO	KABWANGASI	5,475	5.2	13,654	14,851	28,505
	BUTEBO	KAKORO	3,149	5.5	8,464	9,026	17,490
	BUTEBO	KANGINIMA	1,711	5.6	4,812	5,152	9,964
	BUTEBO	KIBALE	2,773	5.9	7,882	8,467	16,349
	BUTEBO	OPWATETA	2,645	6.3	8,106	8,581	16,687

Note:  
MC= Municipality



**Appendix 3 (cont'd): Households and Population by Subcounty/ Town Council/Urban Division and Sex, 2014**

District		Households		POPULATION		
County	Subcounty	Number	Average Size	Males	Females	Total
<b>Eastern</b>						
BUTEBO	PETETE	4,460	5.9	12,854	13,654	26,508
PALLISA	KAMUGE	3,616	5.8	10,271	11,113	21,384
PALLISA	KASODO	2,351	6.1	6,890	7,469	14,359
PALLISA	OLOK	2,622	6.2	7,918	8,326	16,244
PALLISA	PALLISA	2,696	5.7	7,546	7,780	15,326
PALLISA	PALLISA TOWN COUNCIL	6,459	4.9	15,485	17,196	32,681
PALLISA	PUTI-PUTI	4,200	5.9	11,995	12,665	24,660
<b>SERERE</b>						
KASILO	BUGONDO	5,847	6.0	17,322	18,058	35,380
KASILO	KADUNGULU	5,394	6.0	16,140	16,625	32,765
KASILO	KASILO TOWN COUNCIL	740	4.8	1,758	1,818	3,576
KASILO	LABORI	3,342	5.7	9,488	10,011	19,499
KASILO	PINGIRE	5,617	6.1	16,686	17,895	34,581
SERERE	ATIIRA	3,559	5.7	9,954	10,478	20,432
SERERE	KATETA	8,694	6.2	26,205	27,963	54,168
SERERE	KYERE	7,838	6.1	22,742	24,849	47,591
SERERE	OLIO	4,977	5.8	13,938	14,764	28,702
SERERE	SERERE TOWN COUNCIL	1,463	4.2	3,424	3,512	6,936
<b>SIRONKO</b>						
BUDADIRI	BUDADIRI TOWN COUNCIL	3,408	5.5	9,261	9,466	18,727
BUDADIRI	BUGITIMWA	2,091	4.0	4,236	4,225	8,461
BUDADIRI	BUHUGU	1,797	4.2	3,663	3,826	7,489
BUDADIRI	BUKHULO	3,693	4.9	8,660	9,459	18,119
BUDADIRI	BUKIISE	4,639	4.4	9,976	10,307	20,283
BUDADIRI	BUKIYI	3,051	4.4	6,713	6,822	13,535
BUDADIRI	BUKYABO	1,416	5.0	3,620	3,454	7,074
BUDADIRI	BUKYAMBI	826	4.2	1,740	1,745	3,485
BUDADIRI	BUMALIMBA	3,853	4.3	8,251	8,637	16,888
BUDADIRI	BUMASIFWA	2,645	3.9	5,155	5,129	10,284
BUDADIRI	BUNYAFA	2,417	4.6	5,456	5,695	11,151
BUDADIRI	BUSULANI	1,497	5.0	3,779	3,704	7,483
BUDADIRI	BUTANDIGA	1,374	4.3	2,952	2,955	5,907
BUDADIRI	BUTEZA	2,755	4.3	5,849	5,949	11,798
BUDADIRI	BUWALASI	3,237	4.2	6,802	6,953	13,755
BUDADIRI	BUWASA	2,017	4.3	4,381	4,283	8,664
BUDADIRI	BUYOBO	3,197	4.2	6,723	6,817	13,540
BUDADIRI	MASABA	2,318	4.4	5,230	4,898	10,128
BUDADIRI	NALUSALA	2,251	4.2	4,770	4,789	9,559
BUDADIRI	SIRONKO TOWN COUNCIL	4,164	4.5	9,127	9,757	18,884
BUDADIRI	ZESUI	2,744	4.2	5,645	5,777	11,422

Note:  
MC= Municipality

**Appendix 3 (cont'd): Households and Population by Subcounty/ Town Council/Urban Division and Sex, 2014**

District		Households		POPULATION		
County	Subcounty	Number	Average Size	Males	Females	Total
<b>Eastern</b>						
<b>SOROTI</b>						
SOROTI	ARAPAI	6,951	5.7	19,751	20,652	40,403
SOROTI	ASURET	6,669	5.7	19,059	19,856	38,915
SOROTI	GWERI	8,164	5.9	23,304	25,209	48,513
SOROTI	KAMUDA	6,418	5.8	18,251	18,940	37,191
SOROTI	KATINE	5,974	6.0	17,616	18,191	35,807
SOROTI	SOROTI	4,952	4.9	12,054	13,048	25,102
SOROTI	TUBUR	3,787	5.7	10,427	11,344	21,771
SOROTI MC	EASTERN DIVISION	4,940	3.7	8,982	9,713	18,695
SOROTI MC	NORTHERN DIVISION	4,477	3.9	9,598	9,784	19,382
SOROTI MC	WESTERN DIVISION	2,863	3.8	5,366	6,009	11,375
<b>TORORO</b>						
TORORO	KWAPA	3,802	5.3	9,664	10,331	19,995
TORORO	MALABA TOWN COUNCIL	4,431	3.9	8,658	9,566	18,224
TORORO	MELLA	3,439	5.5	9,054	9,841	18,895
TORORO	MERIKIT	5,097	5.1	12,352	13,533	25,885
TORORO	MOLO	3,670	5.1	8,984	9,850	18,834
TORORO	MUKUJU	7,568	5.1	18,658	20,061	38,719
TORORO	OSUKURU	9,154	5.0	23,013	23,599	46,612
TORORO MC	EASTERN DIVISION	4,251	4.2	8,865	9,789	18,654
TORORO MC	WESTERN DIVISION	5,754	3.9	10,828	12,424	23,252
WEST BUDAMA	IYOLWA	3,849	5.3	9,855	10,716	20,571
WEST BUDAMA	KIREWA	5,619	5.2	14,122	15,216	29,338
WEST BUDAMA	KISOKO	3,854	5.2	9,656	10,368	20,024
WEST BUDAMA	MAGOLA	3,353	5.3	8,559	9,276	17,835
WEST BUDAMA	MULANDA	8,087	4.9	19,256	20,837	40,093
WEST BUDAMA	NABUYOGA	5,698	5.4	15,112	15,895	31,007
WEST BUDAMA	NAGONGERA	4,981	5.3	12,756	13,704	26,460
WEST BUDAMA	NAGONGERA TOWN COUNCIL	2,330	5.2	5,998	6,409	12,407
WEST BUDAMA	PAYA	6,061	5.1	15,100	15,868	30,968
WEST BUDAMA	PETTA	3,217	5.0	7,746	8,409	16,155
WEST BUDAMA	RUBONGI	7,245	5.2	18,545	19,625	38,170
WEST BUDAMA	SOP-SOP	2,906	4.9	6,872	7,408	14,280
<b>NORTHERN REGION</b>						
<b>ABIM</b>						
LABWOR	ABIM	2,114	5.8	6,135	6,361	12,496
LABWOR	ABIM TOWN COUNCIL	2,980	5.8	8,557	8,843	17,400
LABWOR	ALEREK	2,821	6.2	8,498	9,117	17,615
LABWOR	LOTUKEI	3,529	6.5	11,254	12,094	23,348
LABWOR	MORULEM	4,165	5.5	11,262	11,942	23,204

Note:  
MC= Municipality

**Appendix 3 (cont'd): Households and Population by Subcounty/ Town Council/Urban Division and Sex, 2014**

District			Households		POPULATION		
	County	Subcounty	Number	Average Size	Males	Females	Total
	LABWOR	NYAKWAE	2,688	5.6	7,257	7,719	14,976
<b>ADJUMANI</b>							
	EAST MOYO	ADJUMANI TOWN COUNCIL	5,897	7.2	20,790	22,232	43,022
	EAST MOYO	ADROPI	2,287	5.1	5,956	5,998	11,954
	EAST MOYO	ARINYAPI	2,147	5.2	5,453	5,682	11,135
	EAST MOYO	CIFORO	3,243	4.5	7,179	7,411	14,590
	EAST MOYO	DZAIPI	8,143	5.2	19,915	22,875	42,790
	EAST MOYO	ITIRIKWA	2,954	5.8	8,107	8,944	17,051
	EAST MOYO	OFUA	2,566	5.5	6,823	7,384	14,207
	EAST MOYO	OKUSIJONI	1,998	5.7	5,572	5,840	11,412
	EAST MOYO	PACARA	3,006	5.6	8,362	8,799	17,161
	EAST MOYO	PAKELE	9,385	5.3	23,346	26,145	49,491
<b>AGAGO</b>							
	AGAGO	ADILANG	3,846	5.3	9,839	10,592	20,431
	AGAGO	AGAGO TOWN COUNCIL	1,148	5.2	2,867	3,194	6,061
	AGAGO	ARUM	2,244	5.2	5,805	5,973	11,778
	AGAGO	KALONGO TOWN COUNCIL	2,213	4.9	5,348	6,177	11,525
	AGAGO	KOTOMOL	2,541	4.8	5,801	6,319	12,120
	AGAGO	LAMIYO	1,591	5.5	4,284	4,448	8,732
	AGAGO	LAPONO	4,063	5.5	10,691	11,502	22,193
	AGAGO	LIRA PALWO	3,452	4.7	7,705	8,421	16,126
	AGAGO	LOKOLE	2,931	5.5	7,752	8,240	15,992
	AGAGO	OMIYA PACWA	2,133	5.5	5,672	6,063	11,735
	AGAGO	OMOT	2,674	5.1	6,564	6,991	13,555
	AGAGO	PAIMOL	3,882	5.4	10,262	10,541	20,803
	AGAGO	PARABONG	2,091	5.7	5,820	6,081	11,901
	AGAGO	PATONGO	2,212	5.1	5,493	5,733	11,226
	AGAGO	PATONGO TOWN COUNCIL	2,285	5.0	5,619	5,962	11,581
	AGAGO	WOL	3,968	5.5	10,573	11,154	21,727
<b>ALEBTONG</b>							
	MOROTO	ABAKO	5,752	5.0	13,998	14,750	28,748
	MOROTO	ABIA	4,833	4.8	11,274	12,166	23,440
	MOROTO	AKURA	4,137	4.9	9,885	10,336	20,221
	MOROTO	ALEBTONG TOWN COUNCIL	1,367	4.7	3,254	3,374	6,628
	MOROTO	ALOI	6,308	4.9	14,979	15,680	30,659
	MOROTO	AMUGU	5,412	5.0	13,151	14,188	27,339
	MOROTO	APALA	4,254	4.7	9,629	10,351	19,980
	MOROTO	AWEI	4,834	5.2	11,925	12,976	24,901
	MOROTO	OMORO	8,658	5.0	21,181	22,230	43,411

Note:  
MC= Municipality

**Appendix 3 (cont'd): Households and Population by Subcounty/ Town Council/Urban Division and Sex, 2014**

District		Households		POPULATION		
County	Subcounty	Number	Average Size	Males	Females	Total
<b>AMOLATAR</b>						
KIOGA	AGIKDAK	1,960	5.6	5,293	5,665	10,958
KIOGA	AGWINGIRI	2,864	5.2	7,669	8,108	15,777
KIOGA	AKWON	1,329	5.7	3,714	3,856	7,570
KIOGA	AMOLATAR TOWN COUNCIL	2,158	5.0	5,481	5,612	11,093
KIOGA	APUTI	2,715	5.5	7,250	7,820	15,070
KIOGA	ARWOTCEK	3,029	5.5	8,239	8,362	16,601
KIOGA	AWELO	2,173	5.3	5,595	5,956	11,551
KIOGA	ETAM	2,645	5.6	7,303	7,420	14,723
KIOGA	MUNTU	2,373	5.6	6,514	6,727	13,241
KIOGA	NAMASALE	4,202	4.8	10,093	9,886	19,979
KIOGA	NAMASALE TOWN COUNCIL	2,437	4.2	5,341	5,000	10,341
<b>AMUDAT</b>						
POKOT	AMUDAT	4,305	6.1	16,867	14,169	31,036
POKOT	AMUDAT TOWN COUNCIL	2,292	5.0	5,750	5,867	11,617
POKOT	KARITA	4,822	6.2	19,877	16,021	35,898
POKOT	LOROO	4,431	6.9	16,004	17,203	33,207
KILAK	AMURU	7,779	5.4	20,603	21,457	42,060
KILAK	AMURU TOWN COUNCIL	1,978	5.0	4,831	5,015	9,846
KILAK	ATIAK	8,132	4.6	18,748	19,552	38,300
KILAK	LAMOGI	8,929	5.2	22,280	24,033	46,313
KILAK	PABO	11,081	4.9	26,040	27,957	53,997
<b>APAC</b>						
KWANIA	ABONGOMOLA	6,426	5.3	16,594	17,655	34,249
KWANIA	ADUKU	5,661	5.1	13,949	15,052	29,001
KWANIA	ADUKU TOWN COUNCIL	1,700	4.2	3,626	4,013	7,639
KWANIA	CHAWENTE	6,340	5.4	16,551	17,444	33,995
KWANIA	INOMO	5,882	5.1	14,528	15,440	29,968
KWANIA	NAMBEISO	9,413	5.2	23,702	24,852	48,554
MARUZI	AKOKORO	8,384	4.9	21,182	20,753	41,935
MARUZI	APAC	10,124	5.2	25,976	27,055	53,031
MARUZI	APAC TOWN COUNCIL	2,937	4.5	6,998	7,505	14,503
MARUZI	CHEGERE	7,174	5.0	17,268	18,423	35,691
MARUZI	IBUJE	7,772	5.2	19,735	20,485	40,220
<b>ARUA</b>						
ARUA MC	ARUA HILL	3,162	5.5	9,170	9,765	18,935
ARUA MC	RIVER OLI	7,158	5.9	20,873	22,849	43,722
AYIVU	ADUMI	5,939	5.1	14,371	16,256	30,627
AYIVU	AROI	4,437	5.5	11,538	12,703	24,241
AYIVU	AYIVUNI	4,548	4.9	10,737	11,791	22,528
AYIVU	DADAMU	7,230	5.7	19,260	21,901	41,161

Note:  
MC= Municipality

**Appendix 3 (cont'd): Households and Population by Subcounty/ Town Council/Urban Division and Sex, 2014**

District		Households		POPULATION		
County	Subcounty	Number	Average Size	Males	Females	Total
AYIVU	MANIBE	5,796	5.0	13,467	15,471	28,938
AYIVU	OLUKO	7,291	5.2	18,124	20,367	38,491
AYIVU	PAJULU	11,003	5.4	27,935	32,275	60,210
MADI-OKOLLO	ANYIRIBU	1,593	5.0	3,835	4,112	7,947
MADI-OKOLLO	OFFAKA	3,991	4.7	9,041	9,893	18,934
MADI-OKOLLO	OGOKO	3,482	5.5	9,488	9,519	19,007
MADI-OKOLLO	OKOLLO	4,070	4.7	9,142	9,919	19,061
MADI-OKOLLO	PAWOR	1,896	5.1	4,610	5,011	9,621
MADI-OKOLLO	RHINO CAMP	4,025	5.9	11,722	12,269	23,991
MADI-OKOLLO	RIGBO	5,908	5.3	15,491	15,844	31,335
MADI-OKOLLO	ULEPPI	1,966	4.5	4,098	4,683	8,781
TEREGO	AII-VU	7,123	5.7	19,538	20,840	40,378
TEREGO	BILEAFE	3,834	5.6	10,251	11,246	21,497
TEREGO	KATRINI	6,571	4.9	15,072	17,139	32,211
TEREGO	OMUGO	7,887	5.5	20,547	22,932	43,479
TEREGO	UDUPI	7,277	5.7	19,970	21,454	41,424
TEREGO	URIAMA	4,334	5.8	12,285	12,745	25,030
VURRA	AJIA	5,713	4.8	12,936	14,294	27,230
VURRA	ARIVU	4,858	4.8	11,495	12,800	24,295
VURRA	LOGIRI	7,454	5.0	17,754	19,656	37,410
VURRA	VURRA	8,937	4.9	21,012	23,693	44,705
<b>DOKOLO</b>						
DOKOLO	ADEKNINO	2,970	5.4	7,842	8,318	16,160
DOKOLO	ADOK	3,484	5.2	8,847	9,319	18,166
DOKOLO	AGWATA	4,054	5.1	10,272	10,831	21,103
DOKOLO	AMWOMA	2,811	5.0	6,743	7,446	14,189
DOKOLO	BATTA	3,661	5.1	9,221	9,447	18,668
DOKOLO	DOKOLO	3,036	5.2	7,778	8,106	15,884
DOKOLO	DOKOLO TOWN COUNCIL	4,053	4.8	9,521	10,289	19,810
DOKOLO	KANGAI	3,098	5.5	8,411	8,778	17,189
DOKOLO	KWERA	2,405	5.4	6,378	6,759	13,137
DOKOLO	OKWALONGWEN	2,781	5.3	7,082	7,605	14,687
DOKOLO	OKWONGODUL	2,428	5.5	6,555	7,031	13,586
<b>GULU</b>						
ASWA	AWACH	3,815	5.1	9,274	10,228	19,502
ASWA	BUNGATIRA	6,776	4.9	15,924	17,024	32,948
ASWA	PAICHO	4,834	5.0	11,720	12,586	24,306
ASWA	PALARO	2,708	4.8	6,735	6,775	13,510
ASWA	PATIKO	3,542	5.2	9,014	9,526	18,540
ASWA	UNYAMA	3,463	4.9	8,345	8,664	17,009
GULU MC	BAR DEGE DIVISION	6,890	4.6	17,397	17,619	35,016

Note:  
MC= Municipality

**Appendix 3 (cont'd): Households and Population by Subcounty/ Town Council/Urban Division and Sex, 2014**

District		Households		POPULATION		
County	Subcounty	Number	Average Size	Males	Females	Total
GULU MC	BAR DEGE DIVISION	6,890	4.6	17,397	17,619	35,016
GULU MC	LAROO DIVISION	6,127	5.1	16,079	16,331	32,410
GULU MC	LAYIBI DIVISION	7,788	4.5	17,977	18,468	36,445
GULU MC	PECE DIVISION	9,102	5.3	22,579	25,826	48,405
OMORO	BOBI	6,355	4.9	15,152	16,104	31,256
OMORO	KORO	5,672	5.0	14,154	15,223	29,377
OMORO	LAKWANA	3,874	5.0	9,445	10,022	19,467
OMORO	LALOGI	5,827	5.2	14,735	15,382	30,117
OMORO	ODEK	6,344	5.1	15,765	16,453	32,218
OMORO	ONGAKO	4,570	5.1	11,315	11,892	23,207
<b>KAABONG</b>						
DODOTH	KAABONG EAST	1,627	6.2	4,605	5,508	10,113
DODOTH	KAABONG TOWN COUNCIL	2,292	5.0	5,611	5,932	11,543
DODOTH	KAABONG WEST	2,353	5.7	6,212	7,190	13,402
DODOTH	KALAPATA	4,152	6.0	11,356	13,897	25,253
DODOTH	KAMION	1,170	5.3	3,132	3,093	6,225
DODOTH	KAPEDO	2,576	5.6	6,978	7,602	14,580
DODOTH	KATHILE	3,569	5.9	9,824	11,299	21,123
DODOTH	KAWALAKOL	2,210	6.4	6,949	7,220	14,169
DODOTH	LOBALANGIT	1,416	5.4	3,745	3,961	7,706
DODOTH	LODIKO	1,294	4.9	2,852	3,537	6,389
DODOTH	LOLELIA	1,399	5.3	3,413	3,977	7,390
DODOTH	LOYORO	676	5.1	1,780	1,827	3,607
DODOTH	NAPORE (KARENGA )	2,521	5.8	7,448	7,527	14,975
DODOTH	SIDOK	2,470	5.2	6,027	6,772	12,799
<b>KITGUM</b>						
CHUA	KITGUM MATIDI	3,218	5.2	8,197	8,559	16,756
CHUA	KITGUM TOWN COUNCIL	9,675	4.5	21,381	23,223	44,604
CHUA	LABONGO AKWANG	3,252	4.9	7,695	8,316	16,011
CHUA	LABONGO AMIDA	3,081	5.2	7,811	8,243	16,054
CHUA	LABONGO LAYAMO	2,195	5.4	5,692	6,085	11,777
CHUA	LAGORO	2,868	5.5	7,684	8,019	15,703
CHUA	MUCWINI	4,214	5.0	10,312	10,809	21,121
CHUA	NAMOKORA	2,698	5.2	6,763	7,277	14,040
CHUA	OMIYA ANYIMA	3,840	5.4	9,985	10,825	20,810
CHUA	OROM	4,918	5.5	12,918	14,218	27,136
<b>KOBOKO</b>						
KOBOKO	ABUKU	1,829	7.9	7,158	7,364	14,522
KOBOKO	DRANYA	2,371	6.4	7,392	7,811	15,203
KOBOKO	KOBOKO TOWN COUNCIL	6,016	6.1	18,077	19,748	37,825

Note:  
MC= Municipality

**Appendix 3 (cont'd): Households and Population by Subcounty/ Town Council/Urban Division and Sex, 2014**

District			Households		POPULATION		
	County	Subcounty	Number	Average Size	Males	Females	Total
	KOBOKO	KULUBA	5,993	6.8	20,519	20,300	40,819
	KOBOKO	LOBULE	4,955	6.8	16,420	17,275	33,695
	KOBOKO	LUDARA	4,482	7.1	15,938	15,883	31,821
	KOBOKO	MIDIA	5,116	6.6	16,587	17,691	34,278
<b>KOLE</b>							
	KOLE	ABOKE	9,719	4.8	22,747	24,070	46,817
	KOLE	AKALO	5,810	5.0	14,227	15,254	29,481
	KOLE	ALITO	8,000	4.9	19,042	20,206	39,248
	KOLE	AYER	7,244	5.0	17,753	18,632	36,385
	KOLE	BALA	9,539	4.9	22,602	23,955	46,557
	KOLE	KOLE TOWN COUNCIL	1,855	4.7	4,304	4,529	8,833
	KOLE	OKWERODOT	6,925	5.0	16,764	17,793	34,557
<b>KOTIDO</b>							
	JIE	KACHERI	5,129	5.9	14,115	16,252	30,367
	JIE	KOTIDO	4,849	6.7	15,784	17,823	33,607
	JIE	KOTIDO TOWN COUNCIL	2,827	4.8	6,842	7,148	13,990
	JIE	NAKAPERIMORU	3,427	6.1	10,830	12,564	23,394
	JIE	PANYANGARA	5,622	6.7	19,770	20,804	40,574
	JIE	RENGEN	4,993	7.0	17,950	19,027	36,977
<b>LAMWO</b>							
	LAMWO	AGORO	3,553	5.1	8,660	9,572	18,232
	LAMWO	LAMWO TOWN COUNCIL	1,573	4.9	3,741	3,945	7,686
	LAMWO	LOKUNG	3,358	4.8	7,849	8,238	16,087
	LAMWO	MADI OPEI	2,473	4.8	5,773	6,213	11,986
	LAMWO	PADIBE WEST	2,505	5.0	5,906	6,594	12,500
	LAMWO	PADIBE EAST	1,845	5.0	4,425	4,819	9,244
	LAMWO	PADIBE TOWN COUNCIL	2,053	4.7	4,674	5,121	9,795
	LAMWO	PALABEK KAL	2,932	4.9	6,982	7,277	14,259
	LAMWO	PALABEK- OGILI	1,913	4.9	4,636	4,716	9,352
	LAMWO	PALABEK-GEM	3,019	4.9	7,162	7,660	14,822
	LAMWO	PALOGA	2,273	4.4	4,769	5,318	10,087
<b>LIRA</b>							
	ERUTE	ADEKOKWOK	8,147	4.8	19,381	20,885	40,266
	ERUTE	AGALI	5,116	4.9	12,040	12,909	24,949
	ERUTE	AGWENG	5,978	4.7	13,616	14,678	28,294
	ERUTE	AMACH	7,074	4.9	16,849	18,236	35,085
	ERUTE	AROMO	6,914	4.9	16,362	17,526	33,888
	ERUTE	BARR	9,130	4.9	21,953	23,242	45,195
	ERUTE	LIRA	7,236	4.8	17,237	18,478	35,715
	ERUTE	NGETTA	6,671	4.7	15,539	16,668	32,207

Note:  
MC= Municipality

**Appendix 3 (cont'd): Households and Population by Subcounty/ Town Council/Urban Division and Sex, 2014**

District		Households		POPULATION		
County	Subcounty	Number	Average Size	Males	Females	Total
ERUTE	OGUR	7,503	4.8	17,320	18,538	35,858
LIRA MC	ADYEL DIVISION	7,643	3.9	15,005	16,846	31,851
LIRA MC	CENTRAL DIVISION	5,947	3.7	10,772	12,019	22,791
LIRA MC	OJWINA DIVISION	10,232	3.7	18,107	20,694	38,801
LIRA MC	RAILWAY DIVISION	1,574	3.6	2,710	2,906	5,616
<b>MARACHA</b>						
MARACHA	KIJOMORO	6,145	4.8	13,798	16,019	29,817
MARACHA	MARACHA TOWN COUNCIL	1,907	4.7	4,162	4,739	8,901
MARACHA	NYADRI	3,944	4.9	9,295	10,314	19,609
MARACHA	OLEBA	5,768	5.5	15,274	16,776	32,050
MARACHA	OLUFEE	4,783	4.9	11,211	12,491	23,702
MARACHA	OLUVU	6,458	4.6	13,885	15,981	29,866
MARACHA	TARA	2,600	6.5	7,927	9,062	16,989
MARACHA	YIVU	4,861	5.2	11,726	13,516	25,242
<b>MOROTO</b>						
MATHENIKO	KATIKEKILE	2,238	4.2	4,654	4,915	9,569
MATHENIKO	NADUNGET	7,929	4.5	18,823	20,113	38,936
MATHENIKO	RUPA	5,018	4.8	12,392	13,393	25,785
MATHENIKO	TAPAC	3,492	4.4	7,336	8,095	15,431
MOROTO MC	NORTH DIVISION	1,608	3.6	3,444	2,939	6,383
MOROTO MC	SOUTH DIVISION	2,221	3.7	4,107	4,328	8,435
<b>MOYO</b>						
OBONGI	ALIBA	2,437	6.8	8,353	8,229	16,582
OBONGI	GIMARA	2,397	5.5	6,594	6,700	13,294
OBONGI	ITULA	2,295	5.7	6,793	6,471	13,264
WEST MOYO	DIFULE	1,642	5.5	4,427	4,556	8,983
WEST MOYO	LAROPI	1,988	4.8	4,778	4,732	9,510
WEST MOYO	LEFORI	2,236	5.5	6,014	6,419	12,433
WEST MOYO	METU	5,738	4.9	14,125	14,111	28,236
WEST MOYO	MOYO	5,034	4.8	11,861	12,819	24,680
WEST MOYO	MOYO TOWN COUNCIL	2,127	4.8	4,992	5,515	10,507
<b>NAKAPIRIPIT</b>						
CHEKWII	KAKOMONGOLE	3,048	5.5	9,905	10,574	20,479
CHEKWII	LOREGAE	4,484	5.1	10,513	12,345	22,858
CHEKWII	MORUITA	2,528	6.1	13,699	11,384	25,083
CHEKWII	NAKAPIRIPIT TOWN COUNCIL	945	3.9	1,849	1,808	3,657
CHEKWII	NAMALU	5,209	5.2	13,575	14,362	27,937
PIAN	LOLCHAT	4,312	7.3	15,592	16,928	32,520
PIAN	LORENGEDWAT	1,433	4.7	3,880	4,172	8,052
PIAN	NABILATUK	4,455	5.8	13,313	15,792	29,105

Note:  
MC= Municipality



**Appendix 3 (cont'd): Households and Population by Subcounty/ Town Council/Urban Division and Sex, 2014**

District		Households		POPULATION		
County	Subcounty	Number	Average Size	Males	Females	Total
<b>NAPAK</b>						
BOKORA	IRIIRI	7,760	5.4	20,063	21,869	41,932
BOKORA	LOKOPO	4,139	5.1	10,247	11,064	21,311
BOKORA	LOPEEI	2,320	5.8	6,432	6,961	13,393
BOKORA	LORENGECORA	1,997	5.6	5,593	5,506	11,099
BOKORA	LOTOME	2,345	4.9	5,350	6,239	11,589
BOKORA	MATANY	4,400	5.1	10,543	12,267	22,810
BOKORA	NAPAK TOWN COUNCIL	1,086	4.8	2,547	2,731	5,278
BOKORA	NGOLERJET	3,424	5.1	8,311	9,496	17,807
<b>NEBBI</b>						
JONAM	ALWI	3,448	5.3	9,010	9,413	18,423
JONAM	PAKWACH	4,372	5.3	11,068	11,994	23,062
JONAM	PAKWACH TOWN COUNCIL	4,521	4.9	10,499	11,861	22,360
JONAM	PANYANGO	5,505	5.3	13,632	15,785	29,417
JONAM	PANYIMUR	5,702	5.3	15,121	15,446	30,567
JONAM	WADELAI	4,598	5.2	11,670	12,464	24,134
PADYERE	AKWORO	4,964	4.9	11,750	12,886	24,636
PADYERE	ATEGO	1,992	4.9	4,646	5,078	9,724
PADYERE	ERUSSI	6,830	5.1	16,724	17,984	34,708
PADYERE	KUCWINY	6,298	5.1	15,424	16,508	31,932
PADYERE	NDHEW	4,234	5.0	9,893	11,186	21,079
PADYERE	NEBBI	4,645	5.2	11,805	12,392	24,197
PADYERE	NEBBI TOWN COUNCIL	7,224	4.8	16,529	18,446	34,975
PADYERE	NYARAVUR	4,025	5.0	9,759	10,777	20,536
PADYERE	PAROMBO	7,064	5.0	16,977	18,493	35,470
<b>NWOYA</b>						
NWOYA	ALERO	7,727	5.2	19,923	20,434	40,357
NWOYA	ANAKA (PAYIRA)	2,274	5.0	5,400	5,897	11,297
NWOYA	ANAKA TOWN COUNCIL	2,784	4.8	6,462	7,027	13,489
NWOYA	KOCH-GOMA	6,894	5.1	17,558	18,091	35,649
NWOYA	PURONGO	5,435	4.9	13,556	13,746	27,302
<b>OTUKE</b>						
OTUKE	ADWARI	2,192	4.7	4,997	5,249	10,246
OTUKE	ALANGO	2,644	4.8	6,085	6,646	12,731
OTUKE	OGOR	3,109	4.8	7,354	7,589	14,943
OTUKE	OGWETTE	3,083	4.9	7,509	7,762	15,271
OTUKE	OKWANG	4,815	4.6	10,730	11,457	22,187
OTUKE	OLILM	2,897	4.8	6,801	7,077	13,878
OTUKE	ORUM	2,115	4.8	4,913	5,231	10,144
OTUKE	OTUKE TOWN COUNCIL	1,418	4.3	3,055	3,162	6,217

Note:  
MC= Municipality

**Appendix 3 (cont'd): Households and Population by Subcounty/ Town Council/Urban Division and Sex, 2014**

District			Households		POPULATION		
	County	Subcounty	Number	Average Size	Males	Females	Total
<b>OYAM</b>							
	OYAM	ABER	6,839	5.0	16,770	17,610	34,380
	OYAM	ABOK	3,660	4.8	8,713	8,977	17,690
	OYAM	ACABA	6,047	5.0	14,532	15,701	30,233
	OYAM	ALEKA	6,144	5.0	14,778	15,721	30,499
	OYAM	ICEME	9,771	4.8	22,992	24,414	47,406
	OYAM	KAMDINI	8,002	5.1	19,878	21,327	41,205
	OYAM	LORO	10,655	5.1	26,970	28,283	55,253
	OYAM	MINAKULU	7,255	5.2	18,299	19,754	38,053
	OYAM	MYENE	5,224	5.2	13,263	13,868	27,131
	OYAM	NGAI	5,793	4.9	13,943	14,243	28,186
	OYAM	OTWAL	5,615	4.6	12,684	13,434	26,118
	OYAM	OYAM TOWN COUNCIL	2,430	4.7	5,882	5,975	11,857
<b>PADER</b>							
	ARUU	ACHOLI BUR	2,570	5.5	7,095	7,117	14,212
	ARUU	ANGANGURA	1,760	5.2	4,508	4,674	9,182
	ARUU	ATANGA	2,887	6.2	8,459	9,370	17,829
	ARUU	AWERE	3,880	4.9	9,095	10,170	19,265
	ARUU	LAGUTI	2,479	5.4	6,489	6,894	13,383
	ARUU	LAPUL	3,663	5.3	8,898	10,397	19,295
	ARUU	LATANYA	2,912	5.2	7,247	7,796	15,043
	ARUU	OGOM	1,940	5.4	4,938	5,453	10,391
	ARUU	PADER	1,970	5.0	4,895	5,110	10,005
	ARUU	PADER TOWN COUNCIL	2,905	4.7	6,691	7,389	14,080
	ARUU	PAJULE	4,115	5.5	10,887	11,652	22,539
	ARUU	PURANGA	3,824	4.8	8,946	9,553	18,499
<b>YUMBE</b>							
	ARINGA	APO	5,375	7.5	19,385	21,042	40,427
	ARINGA	ARIWA	3,380	7.2	12,487	11,956	24,443
	ARINGA	DRAJINI	4,463	6.8	14,740	15,788	30,528
	ARINGA	KEI	6,490	7.0	21,084	24,675	45,759
	ARINGA	KERWA	4,153	7.2	13,921	15,897	29,818
	ARINGA	KOCHI	5,379	7.5	18,876	21,366	40,242
	ARINGA	KULULU	5,084	7.1	18,106	19,278	37,384
	ARINGA	KURU	5,128	8.2	19,043	23,639	42,682
	ARINGA	LODONGA	4,146	7.6	15,559	17,033	32,592
	ARINGA	MIDIGO	4,793	7.9	17,488	20,363	37,851
	ARINGA	ODRAVU	6,509	6.8	21,004	23,314	44,318
	ARINGA	ROMOGI	4,449	9.5	21,593	22,339	43,932
	ARINGA	YUMBE TOWN COUNCIL	4,373	8.0	16,525	19,081	35,606

Note:  
MC= Municipality

**Appendix 3 (cont'd): Households and Population by Subcounty/ Town Council/Urban Division and Sex, 2014**

District			Households		POPULATION		
	County	Subcounty	Number	Average Size	Males	Females	Total
<b>ZOMBO</b>							
	OKORO	ABANGA	3,471	5.0	8,310	9,092	17,402
	OKORO	ATYAK	4,608	4.7	10,654	11,220	21,874
	OKORO	JANGOKORO	6,668	4.7	14,659	16,486	31,145
	OKORO	KANGO	7,436	4.6	16,588	17,965	34,553
	OKORO	NYAPEA	4,671	4.4	9,826	10,762	20,588
	OKORO	PAIDHA	3,091	5.0	7,399	8,078	15,477
	OKORO	PAIDHA TOWN COUNCIL	7,030	4.6	16,285	17,141	33,426
	OKORO	WARR	4,031	4.6	8,882	9,845	18,727
	OKORO	ZEU	7,403	4.7	16,798	17,957	34,755
	OKORO	ZOMBO TOWN COUNCIL	2,560	4.8	6,010	6,411	12,421
<b>WESTERN REGION</b>							
<b>BUHWEJU</b>							
	BUHWEJU	BIHANGA	2,936	4.9	7,164	7,337	14,501
	BUHWEJU	BITSYA	3,194	5.0	7,603	8,277	15,880
	BUHWEJU	BURERE	3,934	5.0	9,661	10,006	19,667
	BUHWEJU	ENGAJU	4,012	4.8	9,405	10,068	19,473
	BUHWEJU	KARUNGU	3,209	4.8	7,327	8,109	15,436
	BUHWEJU	NSIIKA TOWN COUNCIL	679	4.1	1,403	1,459	2,862
	BUHWEJU	NYAKISHANA	3,961	4.9	9,562	9,767	19,329
	BUHWEJU	RWENGWE	3,782	4.4	8,184	8,712	16,896
<b>BULIISA</b>							
	BULIISA	BIISO	3,294	5.0	8,125	8,470	16,595
	BULIISA	BULIISA	3,216	5.2	8,390	8,640	17,030
	BULIISA	BULIISA TOWN COUNCIL	1,441	4.8	3,812	3,473	7,285
	BULIISA	BUTIABA	5,533	4.5	16,554	12,627	29,181
	BULIISA	KIGWERA	2,643	5.3	7,113	6,899	14,012
	BULIISA	KIHUNGYA	2,173	5.7	5,857	6,454	12,311
	BULIISA	NGWEDO	3,217	5.3	8,225	8,930	17,155
<b>BUNDIBUGYO</b>							
	BUGHENDERA	BUKONZO	1,901	5.5	5,174	5,339	10,513
	BUGHENDERA	HARUGALE	2,202	5.8	6,224	6,498	12,722
	BUGHENDERA	NDUGUTU	2,173	5.3	5,568	5,842	11,410
	BUGHENDERA	NGAMBA	2,026	5.2	5,280	5,387	10,667
	BUGHENDERA	NTOTORO	2,108	5.0	5,084	5,482	10,566
	BUGHENDERA	SINDILA	2,236	4.9	5,173	5,784	10,957
	BWAMBA	BUBANDI	4,644	4.7	10,588	11,319	21,907
	BWAMBA	BUBUKWANGA	4,714	4.9	11,110	12,107	23,217
	BWAMBA	BUNDIBUGYO TOWN COUNCIL	4,248	4.4	9,044	9,779	18,823
	BWAMBA	BUSARU	2,836	5.2	7,213	7,709	14,922

Note:  
MC= Municipality

**Appendix 3 (cont'd): Households and Population by Subcounty/ Town Council/Urban Division and Sex, 2014**

District			Households		POPULATION		
	County	Subcounty	Number	Average Size	Males	Females	Total
	BWAMBA	KASITU	3,994	5.2	10,164	10,833	20,997
	BWAMBA	KIRUMYA	2,177	5.1	5,291	5,753	11,044
	BWAMBA	KISUBA	3,682	4.6	7,967	8,895	16,862
	BWAMBA	MIRAMBI	2,361	5.6	6,310	6,853	13,163
	BWAMBA	NYAHUKA TOWN COUNCIL	3,467	4.7	7,830	8,545	16,375
<b>BUSHENYI</b>							
	BUSHENYI-ISHAKA MC	CENTRAL DIVISION	3,866	4.0	8,439	8,207	16,646
	BUSHENYI-ISHAKA MC	ISHAKA DIVISION	4,062	3.5	7,747	8,480	16,227
	BUSHENYI-ISHAKA MC	NYAKABIRIZI DIVISION	2,029	3.8	3,963	4,227	8,190
	IGARA	BITOOMA	2,807	4.8	6,610	6,900	13,510
	IGARA	BUMBAIRE	3,007	4.8	6,904	7,521	14,425
	IGARA	IBAARE	2,694	4.3	5,473	6,172	11,645
	IGARA	KAKANJU	4,895	4.7	11,102	11,807	22,909
	IGARA	KYABUGIMBI	4,085	4.7	9,234	10,150	19,384
	IGARA	KYAMUHUNGA	8,145	4.4	17,733	18,233	35,966
	IGARA	KYEIZOoba	5,896	4.4	12,860	13,612	26,472
	IGARA	NYABUBARE	7,823	4.6	17,548	19,054	36,602
	IGARA	RUHUMURO	2,720	5.0	6,697	6,948	13,645
<b>HOIMA</b>							
	BUGAHYA	BUHANIKA	3,332	4.2	7,338	6,961	14,299
	BUGAHYA	BUSERUKA	8,896	4.6	22,105	20,913	43,018
	BUGAHYA	KIGOROBYA	12,889	5.3	33,772	34,630	68,402
	BUGAHYA	KIGOROBYA TOWN COUNCIL	1,285	4.4	2,732	3,135	5,867
	BUGAHYA	KITOBA	7,476	4.7	17,646	17,694	35,340
	BUGAHYA	KYABIGAMBIRE	8,908	4.6	20,972	20,152	41,124
	BUHAGUZI	BUGAMBE	6,827	4.4	15,284	14,831	30,115
	BUHAGUZI	BUHIMBA	8,729	4.4	19,635	19,404	39,039
	BUHAGUZI	KABWOYA	13,761	4.6	32,239	30,879	63,118
	BUHAGUZI	KIZIRANFUMBI	7,563	4.7	17,832	17,758	35,590
	BUHAGUZI	KYANGWALI	20,911	4.6	49,598	47,768	97,366
	HOIMA MC	BUJUMBURA DIVISION	5,295	4.2	10,850	11,954	22,804
	HOIMA MC	BUSIISI DIVISION	4,469	4.3	9,511	9,750	19,261
	HOIMA MC	KAHOORA DIVISION	9,871	3.4	15,824	19,244	35,068
	HOIMA MC	MPARO DIVISION	5,695	3.9	11,367	12,125	23,492
<b>IBANDA</b>							
	IBANDA	BISHESHE	5,240	4.7	11,994	12,658	24,652
	IBANDA	IBANDA TOWN COUNCIL	8,342	3.6	14,979	16,337	31,316

Note:  
MC= Municipality

**Appendix 3 (cont'd): Households and Population by Subcounty/ Town Council/Urban Division and Sex, 2014**

District		Households		POPULATION		
County	Subcounty	Number	Average Size	Males	Females	Total
IBANDA	IGORORA TOWN COUNCIL	1,455	4.0	2,734	3,129	5,863
IBANDA	ISHONGORORO	2,994	4.9	7,081	7,507	14,588
IBANDA	ISHONGORORO TOWN COUNCIL	4,715	4.6	10,756	11,395	22,151
IBANDA	KASHANGURA	3,667	4.7	8,424	8,978	17,402
IBANDA	KEIHANGARA	2,401	4.7	5,369	5,903	11,272
IBANDA	KICUZI	3,529	4.6	7,908	8,474	16,382
IBANDA	KIJONGO	2,238	4.8	5,116	5,732	10,848
IBANDA	KIKYENKYE	3,298	4.5	7,163	7,849	15,012
IBANDA	NSASI	1,707	4.7	3,936	4,059	7,995
IBANDA	NYABUHIKYE	3,973	4.7	9,291	9,716	19,007
IBANDA	NYAMAREBE	4,792	4.5	11,798	11,234	23,032
IBANDA	RUKIRI	5,392	4.5	11,856	12,716	24,572
IBANDA	RUSHANGO TOWN COUNCIL	861	4.6	1,903	2,088	3,991
<b>ISINGIRO</b>						
BUKANGA	ENDIINZI	4,686	5.0	11,561	11,964	23,525
BUKANGA	KASHUMBA	4,407	4.9	10,733	11,150	21,883
BUKANGA	MBAARE	6,844	5.0	16,979	17,543	34,522
BUKANGA	NAKIVALE	12,437	4.6	28,019	29,149	57,168
BUKANGA	NGARAMA	7,028	5.0	17,144	18,415	35,559
BUKANGA	RUGAAGA	6,828	4.8	16,051	16,948	32,999
BUKANGA	RUSHASHA	2,617	5.0	6,440	6,659	13,099
ISINGIRO	BIREERE	4,792	4.4	10,330	10,985	21,315
ISINGIRO	ISINGIRO TOWN COUNCIL	6,684	4.3	14,399	15,322	29,721
ISINGIRO	KABAREBERE TOWN COUNCIL	1,579	3.9	3,333	3,452	6,785
ISINGIRO	KABINGO	4,498	4.9	10,503	11,401	21,904
ISINGIRO	KABUYANDA	4,361	4.9	10,048	11,277	21,325
ISINGIRO	KABUYANDA TOWN COUNCIL	3,569	4.5	7,732	8,593	16,325
ISINGIRO	KIKAGATE	10,453	4.8	23,806	26,591	50,397
ISINGIRO	MASHA	5,633	4.6	13,366	13,700	27,066
ISINGIRO	NYAKITUNDA	8,750	4.8	19,607	22,209	41,816
ISINGIRO	NYAMUYANJA	3,390	4.6	7,518	8,302	15,820
ISINGIRO	ORUCHINGA	718	4.6	1,530	1,768	3,298
ISINGIRO	RUBOROGOTA	3,696	4.8	8,450	9,139	17,589
<b>KABALE</b>						
KABALE MC	CENTRAL DIVISION	4,069	3.3	7,497	8,185	15,682
KABALE MC	NORTHERN DIVISION	3,555	3.6	6,423	6,822	13,245
KABALE MC	SOUTHERN DIVISION	4,478	3.7	10,274	10,466	20,740
NDORWA	BUHARA	5,675	4.6	12,404	13,950	26,354
NDORWA	BUTANDA	4,104	4.5	8,476	9,787	18,263
NDORWA	KAHARO	4,281	4.5	9,310	9,888	19,198

Note:  
MC= Municipality

**Appendix 3 (cont'd): Households and Population by Subcounty/ Town Council/Urban Division and Sex, 2014**

District		Households		POPULATION		
County	Subcounty	Number	Average Size	Males	Females	Total
NDORWA	KAMUGANGUZI	4,488	4.6	9,592	10,932	20,524
NDORWA	KATUNA TOWN COUNCIL	2,157	4.4	4,882	5,167	10,049
NDORWA	KITUMBA	4,175	4.6	9,450	10,050	19,500
NDORWA	KYANAMIRA	4,781	4.2	9,588	10,719	20,307
NDORWA	MAZIBA	4,775	4.4	10,039	10,878	20,917
NDORWA	RUBAYA	6,050	4.6	12,797	14,930	27,727
RUBANDA	BUBAARE	7,574	4.6	16,461	18,815	35,276
RUBANDA	BUFUNDI	5,670	4.5	11,772	13,994	25,766
RUBANDA	HAMURWA	5,945	4.5	12,684	14,390	27,074
RUBANDA	HAMURWA TOWN COUNCIL	1,267	4.0	2,405	2,741	5,146
RUBANDA	IKUMBA	7,161	4.4	14,371	17,302	31,673
RUBANDA	MUKO	10,258	4.5	22,221	24,626	46,847
RUBANDA	NYAMWERU	3,685	4.8	8,201	9,415	17,616
RUBANDA	RUHIJA	2,317	4.4	4,704	5,514	10,218
RUKIGA	BUKINDA	2,225	4.5	5,002	5,095	10,097
RUKIGA	KAMWEZI	6,287	4.4	13,008	14,526	27,534
RUKIGA	KASHAMBYA	5,929	4.3	12,029	13,947	25,976
RUKIGA	MUHANGA TOWN COUNCIL	2,766	4.1	5,847	5,859	11,706
RUKIGA	RWAMUCUCU	5,959	4.5	12,727	13,998	26,725
<b>KABAROLE</b>						
BUNYANGABU	BUHEESI	8,067	4.5	17,687	18,488	36,175
BUNYANGABU	KABONERO	3,753	5.2	9,767	9,859	19,626
BUNYANGABU	KATEEBWA	3,811	5.5	10,278	10,650	20,928
BUNYANGABU	KIBIITO	3,997	4.7	9,168	9,636	18,804
BUNYANGABU	KIBIITO TOWN COUNCIL	2,778	4.6	6,322	6,662	12,984
BUNYANGABU	KISOMORO	5,079	4.6	11,429	12,034	23,463
BUNYANGABU	RUBONA TOWN COUNCIL	1,348	4.2	2,753	2,874	5,627
BUNYANGABU	RWIMI	3,930	4.4	8,648	8,782	17,430
BUNYANGABU	RWIMI TOWN COUNCIL	3,463	4.5	8,248	8,008	16,256
BURAHYA	BUKUUKU	2,948	4.6	6,750	6,980	13,730
BURAHYA	BUSORO	6,744	3.8	13,130	12,857	25,987
BURAHYA	HAKIBALE	8,338	4.4	18,703	18,031	36,734
BURAHYA	KARAGO TOWN COUNCIL	2,137	4.5	4,798	4,974	9,772
BURAHYA	KARAMBI	6,243	4.1	12,739	13,297	26,036
BURAHYA	KARANGURA	2,421	5.1	6,086	6,282	12,368
BURAHYA	KASENDA	5,154	4.7	11,636	12,484	24,120
BURAHYA	KICWAMBA	7,739	4.5	17,591	17,509	35,100
BURAHYA	KIKO TOWN COUNCIL	3,011	4.0	6,058	5,914	11,972
BURAHYA	KYAITAMBA TOWN COUNCIL	2,772	3.9	5,668	5,039	10,707
BURAHYA	MUGUSU	5,315	4.5	12,012	12,138	24,150

Note:  
MC= Municipality

**Appendix 3 (cont'd): Households and Population by Subcounty/ Town Council/Urban Division and Sex, 2014**

District		Households		POPULATION		
County	Subcounty	Number	Average Size	Males	Females	Total
BURAHYA	RUTEETE	4,300	4.2	8,918	9,054	17,972
FORT PORTAL MC	EASTERN DIVISION	4,966	3.7	9,046	9,579	18,625
FORT PORTAL MC	SOUTHERN DIVISION	4,906	3.1	7,684	8,904	16,588
FORT PORTAL MC	WESTERN DIVISION	4,959	3.5	9,750	9,312	19,062
<b>KAMWENGE</b>						
KIBALE	BIGULI	7,056	4.9	17,099	17,461	34,560
KIBALE	BIHANGA	2,987	4.8	6,872	7,367	14,239
KIBALE	BUSIRIBA	5,998	4.7	13,755	14,841	28,596
KIBALE	BWIZI	6,097	4.9	15,330	15,152	30,482
KIBALE	KABAMBIRO	3,639	4.5	7,760	8,699	16,459
KIBALE	KAHUNGE	7,640	4.8	17,703	19,098	36,801
KIBALE	KAMWENGE	4,947	4.6	10,918	12,039	22,957
KIBALE	KAMWENGE TOWN COUNCIL	4,655	4.0	9,514	9,726	19,240
KIBALE	NKOMA	6,851	4.7	16,762	16,049	32,811
KIBALE	RWAMWANJA R/S	8,913	4.4	19,531	20,205	39,736
KITAGWENDA	BUHANDA	5,238	4.7	11,775	12,759	24,534
KITAGWENDA	KANARA	3,037	4.5	6,640	7,135	13,775
KITAGWENDA	KICHECHE	5,774	4.6	13,023	13,860	26,883
KITAGWENDA	MAHYORO	6,811	4.3	14,566	14,700	29,266
KITAGWENDA	NTARA	5,866	4.9	14,028	15,135	29,163
KITAGWENDA	NYABBANI	4,601	4.8	10,526	11,442	21,968
<b>KANUNGU</b>						
KINKIIZI	BUTOGOTA TOWN COUNCIL	2,340	4.4	5,017	5,328	10,345
KINKIIZI	KAMBUGA	4,869	4.6	10,535	11,646	22,181
KINKIIZI	KAMBUGA TOWN COUNCIL	1,337	4.3	2,844	3,018	5,862
KINKIIZI	KANUNGU TOWN COUNCIL	3,543	4.1	7,229	7,909	15,138
KINKIIZI	KANYANTOROGO	4,008	4.7	9,103	9,795	18,898
KINKIIZI	KATETE	1,611	4.4	3,454	3,839	7,293
KINKIIZI	KAYONZA	5,701	4.8	13,547	14,163	27,710
KINKIIZI	KIHIIHI	3,956	4.5	8,656	9,218	17,874
KINKIIZI	KIHIIHI TOWN COUNCIL	4,881	4.1	9,732	10,617	20,349
KINKIIZI	KINAABA	1,918	4.4	3,806	4,547	8,353
KINKIIZI	KIRIMA	3,865	4.5	8,418	9,113	17,531
KINKIIZI	MPUNGU	2,513	4.5	5,030	6,170	11,200
KINKIIZI	NYAKINONI	1,974	4.4	4,270	4,506	8,776
KINKIIZI	NYAMIRAMA	4,168	4.5	9,123	9,872	18,995

Note:  
MC= Municipality

**Appendix 3 (cont'd): Households and Population by Subcounty/ Town Council/Urban Division and Sex, 2014**

District		Households		POPULATION		
County	Subcounty	Number	Average Size	Males	Females	Total
KINKIIZI	NYANGA	1,675	4.4	3,548	3,896	7,444
KINKIIZI	RUGYEYO	4,777	4.3	9,781	10,894	20,675
KINKIIZI	RUTENGA	3,081	4.4	6,268	7,183	13,451
<b>KASESE</b>						
BUKONZO	BWERA	3,041	5.7	8,222	9,233	17,455
BUKONZO	IHANDIRO	2,516	5.4	6,489	7,060	13,549
BUKONZO	ISANGO	1,403	5.8	3,817	4,282	8,099
BUKONZO	KARAMBI	4,785	5.7	12,981	14,200	27,181
BUKONZO	KISINGA	7,998	5.0	19,346	21,285	40,631
BUKONZO	KITHOLHU	2,984	5.7	8,285	8,846	17,131
BUKONZO	KYARUMBA	7,574	5.6	20,352	21,843	42,195
BUKONZO	KYONDO	4,260	5.6	11,594	12,411	24,005
BUKONZO	MAHANGO	3,655	5.4	9,275	10,407	19,682
BUKONZO	MPONDWE/LHUBIRIHA TOWN COUNCIL	9,903	5.1	24,326	26,692	51,018
BUKONZO	MUKUNYU	6,125	5.2	15,102	16,752	31,854
BUKONZO	NYAKATONNZI	5,893	5.2	14,746	16,090	30,836
BUKONZO	NYAKIYUMBU	874	5.7	2,595	2,425	5,020
BUSONGORA	BUGOYE	6,713	5.3	16,924	18,443	35,367
BUSONGORA	BUHUHIRA	3,331	5.5	8,972	9,517	18,489
BUSONGORA	BWESUMBU	3,773	5.6	10,197	11,017	21,214
BUSONGORA	HIMA TOWN COUNCIL	3,415	3.7	6,356	6,589	12,945
BUSONGORA	KARUSANDARA	2,749	4.3	5,975	5,915	11,890
BUSONGORA	KATWE- KABATORO TOWN COUNCIL	1,742	3.6	3,297	3,114	6,411
BUSONGORA	KILEMBE	2,508	5.3	6,489	6,841	13,330
BUSONGORA	KITSWAMBA	6,078	4.9	15,132	14,877	30,009
BUSONGORA	KYABARUNGIRA	2,972	5.6	8,155	8,579	16,734
BUSONGORA	LAKE KATWE	5,237	4.5	11,881	11,678	23,559
BUSONGORA	MALIBA	8,757	5.3	23,320	24,265	47,585
BUSONGORA	MUHOKYA	4,184	4.7	9,607	9,924	19,531
BUSONGORA	RUKOKI	2,596	5.6	7,045	7,585	14,630
KASESE MC	BULEMBIA DIVISION	2,770	4.7	6,534	6,701	13,235
KASESE MC	CENTRAL DIVISION	7,434	4.1	14,917	16,718	31,635
KASESE MC	NYAMWAMBA DIVISION	15,427	3.6	26,865	29,944	56,809
<b>KIBAALE</b>						
BUGANGAIZI	BIREMBO	6,119	4.4	13,278	13,988	27,266
BUGANGAIZI	BWANSWA	3,590	4.6	8,514	8,193	16,707
BUGANGAIZI	KAKINDO	13,188	4.5	30,104	29,884	59,988
BUGANGAIZI	KAKUMIRO TOWN COUNCIL	2,386	4.1	4,743	5,079	9,822

Note:  
MC= Municipality



**Appendix 3 (cont'd): Households and Population by Subcounty/ Town Council/Urban Division and Sex, 2014**

District		Households		POPULATION		
County	Subcounty	Number	Average Size	Males	Females	Total
BUGANGAIZI	KASAMBYA	7,021	4.6	16,308	16,363	32,671
BUGANGAIZI	KASIITA	12,410	4.7	29,121	29,822	58,943
BUGANGAIZI	MPASAANA	5,018	4.8	11,870	12,078	23,948
BUGANGAIZI	NALWEYO	6,958	4.6	16,143	16,080	32,223
BUGANGAIZI	NKOOKO	7,362	4.7	17,676	17,129	34,805
BUYAGA	BURORA	2,645	5.0	6,388	6,763	13,151
BUYAGA	BWIKARA	8,694	4.9	20,713	21,595	42,308
BUYAGA	KABAMBA	3,708	4.7	8,511	8,795	17,306
BUYAGA	KAGADI	2,653	4.9	6,429	6,633	13,062
BUYAGA	KAGADI TOWN COUNCIL	5,224	4.3	10,765	12,048	22,813
BUYAGA	KIRYANGA	5,483	4.5	12,316	12,306	24,622
BUYAGA	KYAKABADIIMA	1,866	5.0	4,428	4,981	9,409
BUYAGA	KYANAISOKE	3,267	4.7	7,658	7,753	15,411
BUYAGA	KYATEREKERA	4,992	4.8	11,708	12,331	24,039
BUYAGA	KYENZIGE	3,335	4.8	7,831	8,406	16,237
BUYAGA	MABAALÉ	4,570	4.6	10,304	11,010	21,314
BUYAGA	MPEEFU	8,048	4.9	19,047	20,154	39,201
BUYAGA	MUHORRO	3,649	5.0	8,816	9,433	18,249
BUYAGA	MUHORRO TOWN COUNCIL	4,703	4.8	10,946	11,956	22,902
BUYAGA	NDAIGA	2,108	4.1	4,599	4,224	8,823
BUYAGA	PAACWA	3,293	4.8	7,876	8,188	16,064
BUYAGA	RUGASHARI	3,259	4.9	7,759	8,095	15,854
BUYAGA	RUTEETE	2,498	4.8	5,867	6,183	12,050
BUYANJA	BUBANGO	3,697	4.9	9,230	9,051	18,281
BUYANJA	BWAMIRAMIRA	3,912	4.7	9,131	9,149	18,280
BUYANJA	KIBAALÉ TOWN COUNCIL	1,730	3.6	3,061	3,320	6,381
BUYANJA	KYEBANDO	5,026	4.6	11,841	11,583	23,424
BUYANJA	MATALE	3,707	4.8	8,856	8,971	17,827
BUYANJA	MUGARAMA	2,681	4.4	5,931	5,907	11,838
BUYANJA	NYAMARUNDA	5,094	4.6	11,475	11,965	23,440
BUYANJA	NYAMARWA	4,464	4.5	10,035	10,020	20,055
<b>KIRUHURA</b>						
KAZO	BUREMBA	4,151	4.9	10,234	10,398	20,632
KAZO	BURUNGA	4,676	5.0	12,117	11,478	23,595
KAZO	ENGARI	5,094	4.9	12,016	12,883	24,899
KAZO	KANONI	3,476	4.8	8,137	8,714	16,851
KAZO	KAZO	5,702	5.2	14,288	15,290	29,578
KAZO	KAZO TOWN COUNCIL	2,714	4.6	6,343	6,399	12,742

Note:  
MC= Municipality

**Appendix 3 (cont'd): Households and Population by Subcounty/ Town Council/Urban Division and Sex, 2014**

District			Households		POPULATION		
	County	Subcounty	Number	Average Size	Males	Females	Total
	KAZO	NKUNGU	5,403	4.7	12,318	12,861	25,179
	KAZO	RWEMIKOMA	4,730	4.9	11,809	11,574	23,383
	NYABUSHOZI	KANYARYERU	1,511	5.0	3,875	3,741	7,616
	NYABUSHOZI	KASHONGI	5,169	4.9	12,357	12,836	25,193
	NYABUSHOZI	KENSHUNGA	5,658	4.3	13,271	11,919	25,190
	NYABUSHOZI	KIKAATSI	3,448	5.3	9,856	8,794	18,650
	NYABUSHOZI	KINONI	4,026	5.0	10,568	9,821	20,389
	NYABUSHOZI	KIRUHURA TOWN COUNCIL	1,278	4.1	2,932	2,683	5,615
	NYABUSHOZI	KITURA	3,534	4.5	7,548	8,313	15,861
	NYABUSHOZI	NYAKASHASHARA	3,373	4.7	8,876	7,338	16,214
	NYABUSHOZI	SANGA	1,454	5.4	4,099	3,809	7,908
	NYABUSHOZI	SANGA TOWN COUNCIL	2,087	4.3	4,622	4,427	9,049
<b>KIRYANDONGO</b>							
	KIBANDA	BWEYALE TOWN COUNCIL	6,348	4.9	15,178	16,432	31,610
	KIBANDA	KIGUMBA	8,565	5.2	22,667	22,612	45,279
	KIBANDA	KIGUMBA TOWN COUNCIL	4,160	4.4	8,934	9,764	18,698
	KIBANDA	KIRYANDONGO	15,544	5.2	40,661	39,705	80,366
	KIBANDA	KIRYANDONGO REFUGEE SETTLEMENT	2,220	5.9	6,507	6,975	13,482
	KIBANDA	KIRYANDONGO TOWN COUNCIL	1,302	4.2	2,939	2,997	5,936
	KIBANDA	MASINDI PORT	1,888	4.8	4,745	4,307	9,052
	KIBANDA	MUTUNDA	12,683	5.0	31,910	31,855	63,765
<b>KISORO</b>							
	BUFUMBIRA	BUKIMBIRI	3,225	4.8	7,215	8,191	15,406
	BUFUMBIRA	BUSANZA	3,976	4.5	7,649	10,320	17,969
	BUFUMBIRA	CHAHI	4,096	4.7	8,704	10,540	19,244
	BUFUMBIRA	KANABA	3,409	4.7	7,291	8,735	16,026
	BUFUMBIRA	KIRUNDO	4,419	4.5	8,986	11,051	20,037
	BUFUMBIRA	KISORO TOWN COUNCIL	4,168	3.8	8,409	9,152	17,561
	BUFUMBIRA	MURAMBA	8,457	4.3	15,385	20,970	36,355
	BUFUMBIRA	MURORA	4,233	4.6	8,497	10,803	19,300
	BUFUMBIRA	NYABWISHENYA	2,909	5.2	6,992	8,141	15,133
	BUFUMBIRA	NYAKABANDE	5,783	4.5	12,126	14,363	26,489
	BUFUMBIRA	NYAKINAMA	4,552	4.5	9,426	11,225	20,651
	BUFUMBIRA	NYARUBUYE	4,408	4.4	8,655	10,845	19,500
	BUFUMBIRA	NYARUSIZA	6,785	4.4	13,228	17,035	30,263
	BUFUMBIRA	NYUNDO	2,615	5.1	6,178	7,067	13,245

Note:  
MC= Municipality

**Appendix 3 (cont'd): Households and Population by Subcounty/ Town Council/Urban Division and Sex, 2014**

District		Households		POPULATION		
County	Subcounty	Number	Average Size	Males	Females	Total
<b>KYEGEGWA</b>						
KYAKA	HAPUUYO	9,825	4.6	22,636	22,834	45,470
KYAKA	KABWEEZA-KYEGEGWA	5,445	4.7	12,649	12,758	25,407
KYAKA	KAKABARA	10,495	4.6	24,414	24,467	48,881
KYAKA	KASULE	5,140	4.6	11,696	11,868	23,564
KYAKA	KYAKA	4,398	4.6	9,781	10,322	20,103
KYAKA	KYEGEGWA TOWN COUNCIL	4,416	4.1	9,323	9,406	18,729
KYAKA	MPARA	7,071	4.8	16,743	16,918	33,661
KYAKA	RUYONZA	5,043	5.0	13,094	12,363	25,457
KYAKA	RWENTUHA	7,499	4.8	17,524	18,583	36,107
<b>KYENJOJO</b>						
MWENGE	BUFUNJO	10,419	4.8	24,745	25,494	50,239
MWENGE	BUGAAKI	7,937	4.0	16,160	15,534	31,694
MWENGE	BUTIITI	4,279	4.3	9,342	9,405	18,747
MWENGE	BUTUNDUZI	2,688	4.7	6,070	6,489	12,559
MWENGE	BUTUNDUZI TOWN COUNCIL	3,084	4.6	6,950	7,291	14,241
MWENGE	KATOOKE	7,315	4.9	17,634	18,274	35,908
MWENGE	KATOOKE TOWN COUNCIL	3,225	4.5	7,196	7,455	14,651
MWENGE	KIGARAALÉ	4,983	4.8	11,760	12,385	24,145
MWENGE	KIHUURA	6,279	4.7	14,426	14,788	29,214
MWENGE	KISOJO	4,571	4.8	10,982	11,093	22,075
MWENGE	KYARUSOZI	12,174	4.7	28,477	29,242	57,719
MWENGE	KYARUSOZI TOWN COUNCIL	3,267	4.0	6,920	6,214	13,134
MWENGE	KYENJOJO TOWN COUNCIL	5,763	4.0	11,484	11,983	23,467
MWENGE	NYABUHARWA	5,497	4.5	12,453	12,485	24,938
MWENGE	NYANKWANZI	5,655	4.8	13,218	14,156	27,374
<b>MASINDI</b>						
MWENGE	NYANTUNGO	4,875	4.9	12,028	11,858	23,886
BUJENJE	BUDONGO	11,885	4.3	26,023	25,797	51,820
BUJENJE	BWIJANGA	11,575	4.4	26,579	25,417	51,996
BURUULI	KIMENGO	2,924	4.6	7,648	6,308	13,956
BURUULI	MIIRYA	4,555	4.5	10,719	9,676	20,395
BURUULI	PAKANYI	12,654	4.8	30,003	30,159	60,162
MASINDI MC	CENTRAL DIVISION	10,349	3.7	19,406	21,641	41,047
MASINDI MC	KARUJUBU DIVISION	5,404	4.3	14,948	12,862	27,810
MASINDI MC	KIGULYA DIVISION	2,734	4.6	6,311	6,408	12,719
MASINDI MC	NYANGAHYA DIVISION	3,010	4.3	6,627	6,419	13,046

Note:  
MC= Municipality

**Appendix 3 (cont'd): Households and Population by Subcounty/ Town Council/Urban Division and Sex, 2014**

District		Households		POPULATION			
County	Subcounty	Number	Average Size	Males	Females	Total	
<b>MBARARA</b>							
	KASHARI	BUBAARE	4,979	4.6	11,122	11,739	22,861
	KASHARI	BUKIIRO	3,105	4.7	6,928	7,666	14,594
	KASHARI	KAGONGI	4,438	4.7	9,955	10,980	20,935
	KASHARI	KASHARE	4,798	4.7	10,971	12,006	22,977
	KASHARI	RUBAYA	3,922	4.7	9,126	9,171	18,297
	KASHARI	RUBINDI	5,640	4.3	11,746	13,014	24,760
	KASHARI	RWANYAMAHEMBE	6,188	4.2	12,501	13,840	26,341
	MBARARA MC	BIHARWE DIVISION	5,121	4.2	10,732	11,209	21,941
	MBARARA MC	KAKIIKA DIVISION	5,364	3.9	10,661	11,312	21,973
	MBARARA MC	KAKOBA DIVISION	16,861	3.1	27,443	28,076	55,519
	MBARARA MC	KAMUKUZI DIVISION	9,813	3.3	16,507	17,507	34,014
	MBARARA MC	NYAKAYOJO DIVISION	8,726	4.3	18,740	19,512	38,252
	MBARARA MC	NYAMITANGA DIVISION	6,536	3.4	11,251	12,063	23,314
	RWAMPARA	BUGAMBA	7,526	4.7	17,136	18,066	35,202
	RWAMPARA	MWIZI	7,182	4.8	16,705	18,093	34,798
	RWAMPARA	NDEIJA	6,881	4.5	15,176	16,363	31,539
	RWAMPARA	RUGANDO	6,084	4.4	13,201	13,626	26,827
<b>MITOOMA</b>							
	RUHINDA	BITEREKO	5,917	4.7	13,065	14,822	27,887
	RUHINDA	KABIRA	2,480	4.6	5,197	6,227	11,424
	RUHINDA	KANYABWANGA	4,012	4.6	8,621	9,753	18,374
	RUHINDA	KASHENSHERO	2,627	4.7	5,928	6,503	12,431
	RUHINDA	KASHENSHERO TOWN COUNCIL	1,394	4.1	2,705	3,095	5,800
	RUHINDA	KATENGA	3,792	4.6	8,123	9,591	17,714
	RUHINDA	KIYANGA	4,418	4.6	9,721	10,638	20,359
	RUHINDA	MAYANGA	2,356	4.8	5,211	6,014	11,225
	RUHINDA	MITOOMA	4,076	4.5	8,585	9,887	18,472
	RUHINDA	MITOOMA TOWN COUNCIL	1,368	4.1	2,704	2,961	5,665
	RUHINDA	MUTARA	5,011	4.7	10,991	12,617	23,608
	RUHINDA	RUREHE	2,691	4.7	5,761	6,799	12,560
<b>NTOROKO</b>							
	NTOROKO	BUTUNGAMA	1,551	6.2	5,176	4,871	10,047
	NTOROKO	BWERAMULE	1,122	5.6	3,086	3,177	6,263
	NTOROKO	KANARA	1,852	4.3	4,224	3,752	7,976
	NTOROKO	KANARA TOWN COUNCIL	2,254	3.4	3,990	3,867	7,857
	NTOROKO	KARUGUTU	1,208	5.2	3,206	3,092	6,298
	NTOROKO	KARUGUTU TOWN COUNCIL	2,174	4.7	4,981	5,258	10,239
	NTOROKO	KIBUUKU TOWN COUNCIL	347	6.0	1,068	1,034	2,102
	NTOROKO	NOMBE	1,540	5.2	3,979	4,091	8,070
	NTOROKO	RWEBISENGO	809	5.7	2,347	2,235	4,582
	NTOROKO	RWEBISENGO TOWN COUNCIL	744	4.0	1,366	1,622	2,988

MC: Municipality

**Appendix 3 (cont'd): Households and Population by Subcounty/ Town Council/Urban Division and Sex, 2014**

District		Households		POPULATION		
County	Subcounty	Number	Average Size	Males	Females	Total
<b>NTUNGAMO</b>						
KAJARA	BWONGYERA	7,173	4.8	16,260	18,907	35,167
KAJARA	IHUNGA	5,697	4.6	12,316	13,999	26,315
KAJARA	KIBATSI	4,871	4.0	9,067	10,565	19,632
KAJARA	NYABIHOKO	4,387	5.0	10,537	11,358	21,895
KAJARA	RWASHAMAIRE TOWN COUNCIL	1,742	4.0	3,565	4,123	7,688
NTUGAMO MC	CENTRAL DIVISION	1,745	4.0	4,088	3,777	7,865
NTUGAMO MC	EASTERN DIVISION	1,414	3.9	2,910	2,825	5,735
NTUGAMO MC	WESTERN DIVISION	1,306	3.5	2,716	2,538	5,254
RUHAAMA	ITOJO	4,774	4.8	11,290	12,073	23,363
RUHAAMA	KITWE TOWN COUNCIL	3,869	4.6	8,662	9,518	18,180
RUHAAMA	NTUNGAMO	6,437	4.8	15,077	16,219	31,296
RUHAAMA	NYAKYERA	7,939	4.9	18,360	20,408	38,768
RUHAAMA	RUHAAMA	9,446	4.6	20,528	22,804	43,332
RUHAAMA	RUKONI EAST	5,181	4.5	11,323	12,391	23,714
RUHAAMA	RUKONI WEST	3,594	4.7	7,873	8,999	16,872
RUHAAMA	RWEIKINIRO	7,363	5.0	17,450	19,170	36,620
RUSHENYI	KAYONZA	6,178	4.5	13,597	14,466	28,063
RUSHENYI	NGOMA	5,210	5.1	13,317	13,632	26,949
RUSHENYI	RUBAARE	5,179	5.0	12,905	13,357	26,262
RUSHENYI	RUBAARE TOWN COUNCIL	3,203	4.1	6,491	6,849	13,340
RUSHENYI	RUGARAMA	6,524	5.0	15,912	17,101	33,013
<b>RUBIRIZI</b>						
BUNYARUGURU	KATUNGURU	1,353	2.8	2,325	1,684	4,009
BUNYARUGURU	KICHWAMBA	3,647	4.5	7,977	8,712	16,689
BUNYARUGURU	MAGAMBO	2,473	4.6	5,491	6,016	11,507
BUNYARUGURU	RUBIRIZI TOWN COUNCIL	1,936	4.0	3,790	4,350	8,140
BUNYARUGURU	RUTOTO	2,971	4.4	6,069	7,074	13,143
BUNYARUGURU	RYERU	2,786	4.8	6,113	7,179	13,292
KATERERA	KATANDA	3,916	4.8	9,010	9,944	18,954
KATERERA	KATERERA	2,342	4.4	4,901	5,490	10,391
KATERERA	KATERERA TOWN COUNCIL	2,145	4.2	4,419	4,782	9,201
KATERERA	KIRUGU	2,478	4.5	5,418	5,903	11,321
KATERERA	KYABAKARA	2,806	4.5	6,053	6,583	12,636

Note:

MC: Municipality

**Appendix 3 (cont'd): Households and Population by Subcounty/ Town Council/Urban Division and Sex, 2014**

District		Households		POPULATION		
County	Subcounty	Number	Average Size	Males	Females	Total
<b>RUKUNGIRI</b>						
RUBABO	BUYANJA	7,668	4.7	17,458	18,520	35,978
RUBABO	KEBISONI	5,631	4.6	12,376	13,648	26,024
RUBABO	NYAKISHENYI	7,906	4.3	15,934	18,487	34,421
RUBABO	NYARUSHANJE	9,695	4.6	21,059	24,146	45,205
RUJUMBURA	BUGANGARI	6,816	4.5	14,759	16,041	30,800
RUJUMBURA	BUHUNGA	4,937	4.5	10,400	11,894	22,294
RUJUMBURA	BWAMBARA	6,909	4.5	15,416	15,995	31,411
RUJUMBURA	NYAKAGYEME	7,265	4.4	15,276	16,711	31,987
RUJUMBURA	RUHINDA	5,634	4.6	12,162	13,776	25,938
RUKUNGIRI MC	EASTERN DIVISION	2,887	4.2	6,288	6,706	12,994
RUKUNGIRI MC	SOUTHERN DIVISION	2,095	4.1	4,297	5,042	9,339
RUKUNGIRI MC	WESTERN DIVISION	3,410	4.1	6,951	7,225	14,176
<b>SHEEMA</b>						
SHEEMA	BUGONGI TOWN COUNCIL	2,732	4.2	5,688	6,137	11,825
SHEEMA	KABWOHE-ITENDERO TOWN COUNCIL	5,271	3.7	9,763	10,537	20,300
SHEEMA	KAGANGO	4,224	4.7	9,546	10,486	20,032
SHEEMA	KASAANA	3,718	4.5	8,011	8,723	16,734
SHEEMA	KASHOZI	3,166	4.5	6,750	7,568	14,318
SHEEMA	KIGARAMA	4,887	4.4	10,149	11,493	21,642
SHEEMA	KITAGATA	4,178	4.3	8,760	10,011	18,771
SHEEMA	KYANGYENYI	6,708	4.6	14,930	16,333	31,263
SHEEMA	MASHERUKA	3,962	4.4	8,542	9,303	17,845
SHEEMA	RUGARAMA	2,013	5.0	4,819	5,329	10,148
SHEEMA	SHEEMA TOWN COUNCIL	3,654	4.3	7,568	8,350	15,918
SHEEMA	SHUUKU	2,847	4.1	6,125	6,799	12,924
<b>Conflict Areas</b>		2,421	5.6	6,417	6,301	12,718
<b>Total</b>		<b>7,353,427</b>		<b>16,935,456</b>	<b>17,921,357</b>	<b>34,856,813</b>

Note:

MC: Municipality

#### **Appendix 4: List of Conflict Areas**

These are:

##### **A. International Boundary Conflicts**

- (1) Uganda-Sudan International Border
- (2) Uganda-Tanzania International Border

##### **B. Between Districts Boundary Conflicts**

- (3) Adjumani-Amuru District Border
- (4) Agago and Kitgum District Border
- (5) Amudat and Katakwi District Border
- (6) Amuru and Gulu District Border
- (7) Arua-Yumbe District Border
- (8) Bukwo and Kween District Border
- (9) Mbale and Budaka District Border
- (10) Mbale and Sironko District Border
- (11) Moroto and Nakapiripirit District Border
- (12) Moyo and Yumbe District Border

##### **C. Within Districts Boundary Conflicts**

- (13) Isingiro District Internal Border
- (14) Kapchorwa District Border
- (15) Kitgum District Internal Border
- (16) Mbale District Internal Border
- (17) Sironko District Internal Border

# NOTES



## **UGANDA BUREAU OF STATISTICS**

Plot 9 Colville Street PO Box 7186 Kampala Tel: (256) 41 70 6000 Fax 237553  
Email: [ubos@ubos.org](mailto:ubos@ubos.org) Website: [www.ubos.org](http://www.ubos.org)