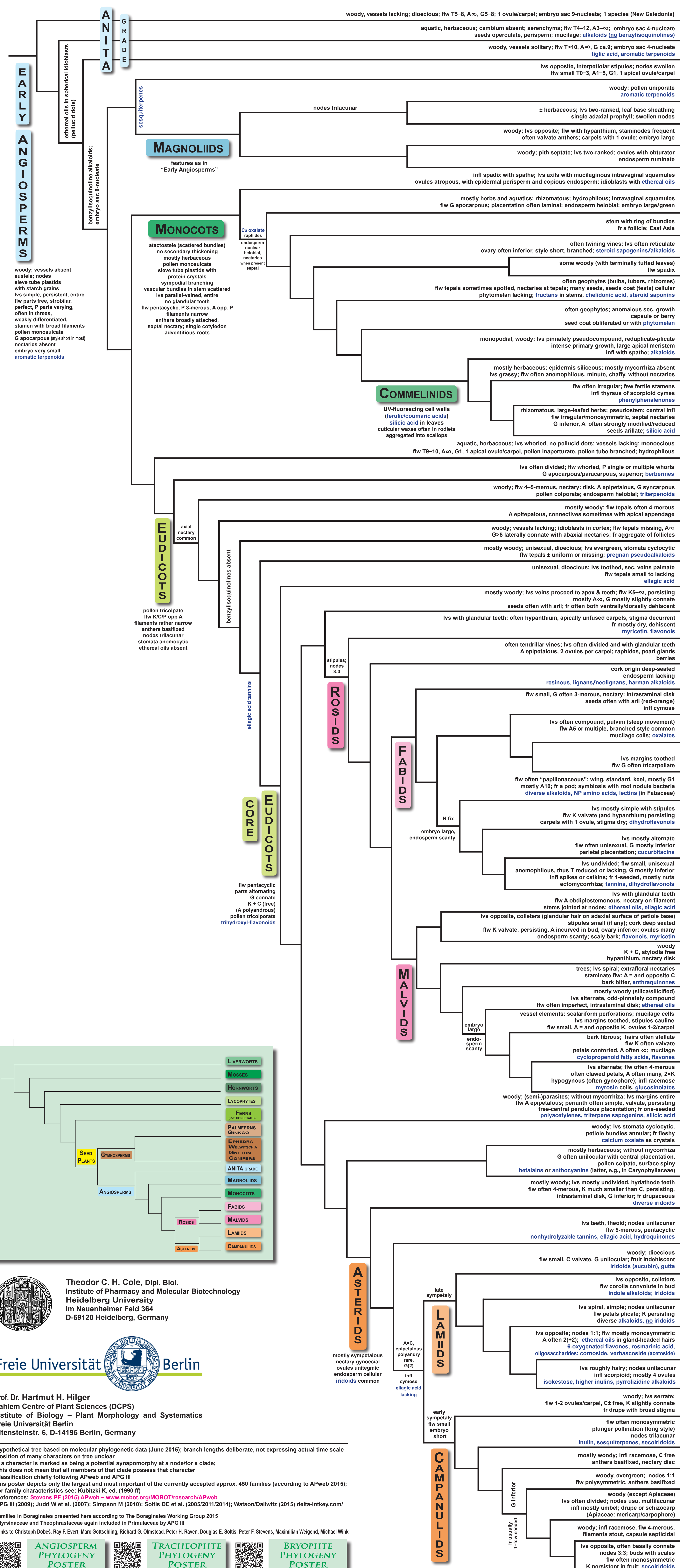


ANGIOSPERM PHYLOGENY

Flowering Plant Systematics



AMBORELLALES	Amborellaceae			
NYMPHAEALES	Cabombaceae	Hydatellaceae		Nymphaeaceae
AUSTROBAILEYALES	Austrobaileyaceae	Schisandraceae (incl. Illiciaceae)		Trimeniaceae
CHLORANTHALES	Chloranthaceae			
CANELLALES	Canellaceae	Winteraceae		
PIPERALES	Aristolochiaceae	Piperaceae		Saururaceae
LAURALES	Calycanthaceae	Lauraceae	Hernandiaceae	Monimiaceae
MAGNOLIALES	Annonaceae	Degeneriaceae	Eupomatiaceae	Himantandraceae
ACORALES	Acoraceae			
ALISMATALES	Alismataceae (incl. Limnocharitaceae)	Aponogetonaceae	Butomaceae	Hydrocharitaceae
PETROSAVIALES	Petrosaviaceae			
DIOSCOREALES	Burmanniaceae	Dioscoreaceae		Nartheciaceae
PANDANALES	Cyclanthaceae	Pandanaceae		Velloziaceae
LILIALES	Alstroemeriaceae	Colchicaceae	Corsiaceae	Liliaceae
ASPARAGALES	Amaryllidaceae (incl. Agapanthaceae, Alliaceae)	Asparagaceae (incl. Agavaceae, Hyacinthaceae, Ruscaceae)	Tecophilaeaceae	Xanthorrhoeaceae (incl. Asphodelaceae, Hemerocallidaceae)
ARECALES	Arecaeae			
POALES	Bromeliaceae	Cyperaceae	Eriocaulaceae	Juncaceae
COMMELINALES	Commelinaceae			
ZINGIBERALES	Cannaceae	Costaceae	Heliconiaceae	Lowiaceae
CERATOPHYLLALES	Ceratophyllaceae			
RANUNCULALES	Berberidaceae	Circaeasteraceae		
SABIALES	Sabiaceae			
PROTEALES	Nelumbonaceae			
TROCHODENDRALES	Trochodendraceae			
BUXALES	Buxaceae			
GUNNERALES	Gunneraceae			
DILLENALES	Dilleniaceae			
SAXIFRAGALES	Altingiaceae	Cercidiphyllaceae	Crassulaceae	
VITALES	Vitaceae			
ZYGOPHYLLALES	Krameriaceae			
CELASTRALES	Celastraceae (incl. Hippocretaceae, Brexiaceae, Parnassiaceae)			
OXALIDALES	Brunelliaceae	Cephalotaceae		
MALPIGHALES	Achariaceae	Chrysobalanaceae	Erythroxylaceae	
FABALES	Fabaceae			
ROSALES	Barbeyaceae	Cannabaceae	Dirachmaceae	
CUCURBITALES	Anisophyllaceae	Begoniaceae		
FAGALES	Betulaceae	Casuarinaceae		
GERANIALES	Francoaceae			
MYRTALES	Combretaceae	Melastomataceae (incl. Memecylaceae)		
CROSSOSOMATALES	Crossosomataceae	Geissolomataceae		
PICRAMNIALES	Picramniaceae			
SAPINDALES	Anacardiaceae	Burseraceae		
HUERTEALES	Dipentodontaceae			
MALVALES	Bixaceae	Cistaceae	Dipterocarpaceae	
BRASSICALES	Bataceae	Brassicaceae	Capparidaceae	
SANTALALES	Balanophoraceae			
BERBERIDOPSISALES	Aextoxicaceae			
CARYOPHYLLALES	Aizoaceae	Amaranthaceae		
CORNALES	Cornaceae	Curtisiaceae		
ERICALES	Actinidiaceae	Clethraceae	Ebenaceae	
GARRYALES	Eucommiaceae			
GENTIANALES	Apocynaceae (incl. Asclepiadaceae)	Gentianaceae		
SOLANALES	Convolvulaceae (incl. Cuscutaceae)	Hydroleaceae		
LAMIALES	Acanthaceae	Byblidaceae	Genesieraceae	
BORAGINALES*	Boraginaceae	Ehretiaceae (+ Lennoaceae)		
AQUIFOLIALES	Aquifoliaceae			
ASTERALES	Asteraceae	Calyceraceae	Campanulaceae (incl. Lobeliaceae)	
ESCALLONIALES	Escalloniaceae			
BRUNIALES	Bruniaceae			
APIALES	Apiaceae	Araliaceae		
PARACRYPHIALES	Paracryphiaceae			
DIPSACALES	Adoxaceae	Caprifoliaceae		

Theodor C. H. Cole, Dipl. Biol.
 Institute of Pharmacy and Molecular Biotechnology
 Heidelberg University
 Im Neuenheimer Feld 364
 D-69120 Heidelberg, Germany

Freie Universität Berlin

Prof. Dr. Hartmut H. Hilger
 Dahlem Centre of Plant Sciences (DCPS)
 Institute of Biology - Plant Morphology and Systematics
 Freie Universität Berlin
 Altensteinstr. 6, D-14195 Berlin, Germany

- hypothetical tree based on molecular phylogenetic data (June 2015); branch lengths deliberate, not expressing actual time scale
 - position of many characters on tree unclear
 - if character is marked as being a potential synapomorphy at a node for a clade; this does not mean that all members of that clade possess that character
 - classification chiefly following APweb and APG III
 - this poster depicts only the largest and most important of the currently accepted approx. 450 families (according to APweb 2015); for family characteristics see: Kubitzki K, ed. (1990 ff)
 - References: Stevens PF (2015) APweb - www.mobot.org/MOBOT/research/APweb
 APG III (2009); Judd W et al. (2007); Simpson M (2010); Soltis DE et al. (2005/2011/2014); Watson/Dallwitz (2015) delta-intkey.com/
 * families in Boraginales presented here according to The Boraginales Working Group 2015
 † Myrsinaceae and Theophrastaceae again included in Primulaceae by APG III
 Thanks to Christoph Döbè, Ray F. Evert, Marc Gottschling, Richard G. Olmstead, Peter H. Raven, Douglas E. Soltis, Peter F. Stevens, Maximilian Weigand, Michael Wink

