

DIAMOND CAP

designed by Meg Myers

Classic Elite Yarns

COLOR BY KRISTIN

Wool • Alpaca • Mohair

From the studio of Kristin Nicholas comes Color by Kristin – a soft and smooth three-ply blend of wool, alpaca, and mohair in wide palette of colors inspired by nature and the world around us.

SKILL LEVEL

Intermediate

SIZE

Cap (Fuller Hat)

FINISHED MEASUREMENTS

24¾ (28)" circumference at fullest part, blocked

YARN

Color By Kristin by **Classic Elite Yarns**

(50% wool, 25% alpaca, 25% mohair;
50 g = approx 95 yards)

2 balls for both sizes

3 balls will make two hats of either size

NEEDLES

Cap: Circular knitting needle (16") in sizes US 6 (4 mm) and 8 (5 mm) and a set of dpns in size US 8 (5 mm) **or size to obtain gauge.**

Fuller Hat: Circular knitting needle (16") in sizes US 7 (4.5 mm) and 9 (5.5 mm) and a set of dpns in size US 9 (5.5 mm) **or size to obtain gauge.**

OTHER MATERIALS

Stitch marker

GAUGE

18 (16) sts and 26 (24) rows = 4" in Diamond Patt with larger needle. **Take time to save time, check your gauge.**



Diamond Cap © 2014 Meg Myers & Classic Elite Yarns

originally published in the CEY Web-Letter, Issue 165 • www.classiceliteyarns.com • blog.classiceliteyarns.com • @CEYarns

This pattern is specifically for private use only. All commercial uses involving reproduction of this pattern or duplication of this piece are prohibited unless specifically licensed in writing by copyright owner. For more information, visit classiceliteyarns.com/newsletter.php.

page 1 of 2



Find us online!

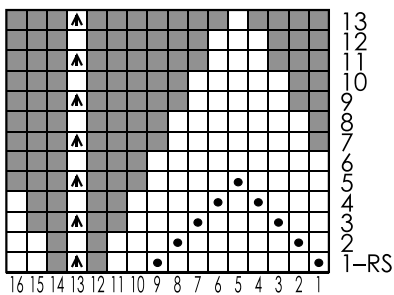
Classic Elite Yarns



ABBREVIATIONS

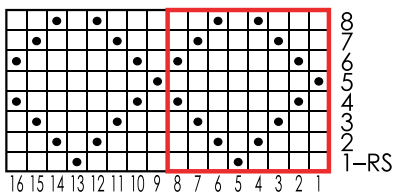
CO: cast on
dec('d): decrease(d)
inc('d): increase(d)
k: knit
LH: left hand
m1: (make 1) Insert LH needle under horizontal strand between st just worked and next st, from front to the back, knit through the back loop (1 st inc'd).
p: purl
patt: pattern
rep: repeat
RH: right hand
rnd(s): round(s)
s2kp: Slip 2 sts knitwise, from LH needle to RH needle, k1, pass slipped sts over k1 (2 sts dec'd).
st(s): stitch(es)

Crown Decrease Pattern



Diamond Pattern

two repeats shown



□ knit ▲ s2kp
 ● purl ■ no stitch

PATTERN STITCHES

Circular 1 x 1 Rib (multiple of 2 sts) All rnds: *K1, p1; rep from * around.

Diamond Pattern (multiple of 8 sts)

(also, see chart)
 Rnd 1: *K4, p1, k3; rep from * around.
 Rnd 2: *K3, p1, k1, p1, k2; rep from * around.
 Rnd 3: *K2, p1, k3, p1, k1; rep from * around.
 Rnd 4: *K1, p1, k5, p1; rep from * around.
 Rnd 5: *P1, k7; rep from * around.
 Rnd 6: Rep Rnd 4.
 Rnd 7: Rep Rnd 3.
 Rnd 8: Rep Rnd 2.
 Rep rnds 1 – 8 for Diamond Patt.

Crown Decrease Pattern: (multiple of 16 sts dec'd to multiple of 2 sts)

(also, see chart)
 Rnd 1: *P1, k7, p1, k2, s2kp, k2; rep from * around – 98 sts.
 Rnd 2: *K1, p1, k5, p1, k6; rep from * around.
 Rnd 3: *K2, p1, k3, p1, k3, s2kp, k1; rep from * around – 84 sts.
 Rnd 4: *K3, p1, k1, p1, k6; rep from * around.
 Rnd 5: *K4, p1, k4, s2kp; rep from * around – 70 sts.
 Rnd 6: Knit.
(Note: For each of the rem decrease rnds it will be necessary to borrow the first stitch of the following rnd to complete the final s2kp of the rnd. Move the marker one stitch to the left as necessary.)
 Rnd 7: *K7, s2kp; rep from * around – 56 sts.
 Rnd 8: Knit.
 Rnd 9: *K5, s2kp; rep from * around – 42sts.
 Rnd 10: Knit.
 Rnd 11: *K3, s2kp; rep from * around – 28 sts.
 Rnd 12: Knit.
 Rnd 13: *K1, s2kp; rep from * around – 14 sts.
 Work rnds 1–13 for Crown Dec Patt.

CAP

With smaller circular needle, CO 84 sts. Place marker for beg-of-rnd and join to beg working in-the-rnd, being careful not to twist sts.

Begin 1 x 1 Rib; work even for ¾".

Inc Rnd: *K3, m1; rep from * around – 112 sts.

Change to larger needle and beg Diamond Patt: Work Rnds 1 – 8 of Diamond chart 3 times, then work Rnds 1 – 4 once more – 28 rnds total.

Change to Crown Dec Patt: Work Rnds 1-13, changing to dpns when necessary – 14 sts remain. Break yarn leaving a long tail, thread through remaining sts and draw up tightly.

FINISHING

Lightly block hat.