



Index of cancer survival for Clinical Commissioning Groups in England: Adults diagnosed 1997-2012 and followed up to 2013

Coverage: **England**

Date: **16 December 2014**

Geographical Area: **Other**

Theme: **Health and Social Care**

Key points

- The one-year cancer survival index for England increased steadily from 59.7% for adults diagnosed in 1997 to 69.3% in 2012.
- Geographic inequalities in the one-year survival index are persistent: a clear North-South gradient existed in 1997, although this was less marked in 2012.
- The pattern of a gradual increase in the one-year survival index with persistent geographic inequalities is similar for middle-aged (55 to 64 years) and elderly (75 to 99 years) patients.
- In 2012, the England one-year survival index for all cancers remained markedly lower for elderly patients (57.2%) compared to middle-aged patients (76.7%).
- Geographic inequalities in the one-year survival index in London are only slightly narrower than those observed for the whole of England.

Summary

This bulletin presents an index of survival for all cancers combined, at one year after diagnosis, for adults who were diagnosed during 1997 to 2012 and followed up to 31 December 2013. The index has been produced for patients living in the territories assigned to each of 211 Clinical Commissioning Groups (CCGs) in England.

Results for additional indices are also presented for patients diagnosed during the same period:

1. A cancer survival index at both one and five years after diagnosis, for all cancers combined, for each of 25 NHS England Area Teams (ATs).
2. A cancer survival index at both one and five years after diagnosis, for all cancers combined, for England as a whole.

Collaboration

This publication is produced in partnership with the Cancer Research UK Cancer Survival Group, at the London School of Hygiene and Tropical Medicine.

London School of Hygiene and Tropical Medicine

LONDON
SCHOOL of
HYGIENE
& TROPICAL
MEDICINE



Introduction

This bulletin presents an index of net survival at one year after diagnosis for all cancers combined, for each of the 211 Clinical Commissioning Groups (CCGs) in England. This index is designed as an overall measure of the effectiveness of cancer services at both local and national level. For Health Service Managers application, the index needs to reflect the overall outcome (effectiveness) of care for all cancer patients resident in the territory of a given CCG, and to relate to patients diagnosed in a single calendar year.

As a national surveillance tool of strategic value for government policy, the index also needs to provide a succinct national overview of changes in the geographic pattern of short-term survival for all cancers. At both local and national level, trends in the index should support assessment of the impact of earlier diagnosis, a key component of the National Awareness and Early Diagnosis Initiative ([Anon. 2008](#); [Richards, 2009a](#); [Richards, 2009b](#)).

Survival index for all cancers combined

From 1997 to 2012 an index of one-year net survival (%) for all cancers combined was constructed for each of the 211 Clinical Commissioning Groups (CCGs) in England.

In comparing survival between CCGs and over time, it is crucial to take account of differences between CCGs in the profile of cancer patients by age, sex and cancer type. This is because net survival varies with age and sex, and especially between different cancers, and the profile of each of these factors for cancer patients within a given CCG can change over time. Standardisation

for all three factors is essential to minimise bias and improve the interpretability of this all-cancers survival index. This approach is encapsulated in the survival index in this bulletin. The approach was developed to produce an index of short-term survival that could be used consistently from year-to-year for Primary Care Trusts ([Office for National Statistics, 2012](#)), which were replaced by CCGs on 1 April 2013.

A cancer survival index has also been constructed on the same basis for each of the 25 NHS Area Teams (ATs) in England over the 16 years 1997 to 2012, at one and five years after diagnosis. The territory of each CCG fits entirely within a given Area Team. Comparable survival index figures have also been constructed for each year for England as a whole.

Survival index for three cancers combined

A separate survival index has also been constructed for three common cancers: breast (women), colorectal and lung, to offer the prospect of a simpler index. The index is presented at one year after diagnosis for each of the 211 CCGs, for the 25 ATs and for England as a whole, and for each year (1997 to 2012).

An index of survival at five years after diagnosis is also presented for each Area Team, and for England as a whole.

Smoothed maps

Smoothed maps of the survival index were constructed for each year in the 16-year period 1997–2012 to provide a visual impression of trends in the geographic pattern of one-year survival for all cancers combined across England. Examples are shown for selected years 1997, 2002, 2007 and 2012: one-year survival index for adults aged 15 to 99 years (Figure 1), patients aged 55 to 64 years (Figure 2) and patients aged 75 to 99 years (Figure 3).

In these maps, the CCG boundaries are not shown. The survival index at each point on the map is weighted by all other estimates within a radius of 150km, with weights inversely proportional to their distance. The circles on the maps represent the CCGs with the largest populations, for which survival estimates are statistically stable and are not included in the smoothing process. The purpose of these maps is to provide a ‘bird’s-eye’ view of geographic variation in cancer survival across the country, after elimination of random local fluctuations.

Funnel plots

Funnel plots show how much a particular survival index deviates from the overall survival index for that year in England (the horizontal line in each plot), given the statistical precision of the index for each CCG. The precision is the inverse of the variance of the survival index. Funnel plots of the one-year survival index for all cancers combined are presented for all adult patients (aged 15 to 99 years) (Figure 4), for patients aged 55 to 64 years (Figure 5), and for patients aged 75 to 99 years (Figure 6). Each data point represents one CCG.

The two 'control limits', in the shape of a funnel around the horizontal line, represent approximately two (95% control limits) and three (99.8% control limits) standard deviations, respectively, above or below the national average. Data points that lie inside the control limits may be considered as within the range of geographical variation that could be expected by chance. Values of the survival index that fell below the control limits for 1997 are marked with a red dot. They represent the CCGs for which the cancer survival index was significantly lower than the national average for adults diagnosed in 1997, after taking account of differences between CCGs in the statistical precision of the index. These CCGs with 'outlier' values of the index for 1997 are also marked in red in the funnel plots for the last year of incidence 2012, to provide a visual indication of the extent to which the survival index in those CCGs has improved or remained consistently low over time. It should be noted that these 'outlier' values are not just the lowest values that would be obtained from a simple ranked list. Some of the lowest values of the index are still within the range of variation that could be expected by chance (that is, inside the control limits). These are generally for the smallest CCGs, in which the index has lower precision.

[Table 8 \(132.5 Kb Excel sheet\)](#) presents a list of the CCGs for which the 2012 one-year survival index for all cancers for adults aged 15 to 99 years (see Figure 4b in 'List of Figures - Funnel plots') fell either above or below the 99.8% control limits (and is therefore significantly different from the 2012 England average).

Results

[Table 1 \(154 Kb Excel sheet\)](#) shows the mid-2012 estimates of the resident populations in each CCG ([Office For National Statistics, 2013](#)). CCG populations in 2012 ranged from 63,000 to 869,000, with a mean of 254,000.

[Table 1 \(154 Kb Excel sheet\)](#) also shows the number of patients included in the analyses for each CCG. Of the patients who were eligible for analysis, 3.5% were excluded because the cancer was only registered from a death certificate (DCO) and the survival time was therefore unknown. A further 0.3% were excluded because their vital status (whether alive, emigrated, dead or not traced) on 31 December 2013 was unknown, or because of duplicate registration, an invalid sequence of dates, or the patient could not be attributed to a CCG of residence at diagnosis. Patients with zero survival time (1.8% of all patients) were included in the analyses, and one day was added to their survival time. Records for multiple primary tumours were excluded (6.5%) to avoid in the estimation of the overall survival index. The analyses included 2,884,192 patients in total.

Estimates of the one-year survival index for all cancers combined are presented for each of the 211 Clinical Commissioning Groups in England, and for each year 1997 to 2012, for:

- all adults 15 to 99 years; [Table 2 \(443 Kb Excel sheet\)](#)
- patients aged 55 to 64 years [Table 3 \(443 Kb Excel sheet\)](#)
- patients aged 75 to 99 years [Table 4 \(443 Kb Excel sheet\)](#)

Estimates of the one-year survival index for three cancers (breast, colorectal and lung) are presented for each of the 211 Clinical Commissioning Groups in England, and for each year 1997 to 2012, for:

- all adults 15 to 99 years; [Table 5 \(454.5 Kb Excel sheet\)](#)
- patients aged 55 to 64 years [Table 6 \(454.5 Kb Excel sheet\)](#)
- patients aged 75 to 99 years [Table 7 \(454.5 Kb Excel sheet\)](#)

Differences between survival index estimates between age groups are taken as the arithmetic difference: for example, 12% is shown as 2% (not 20%) higher than 10%. Survival figures are rounded to one decimal place, but the differences are based on the exact underlying figures.

Commentary

For adults diagnosed in 2012, the one-year survival index in England for all cancers combined and for all ages was 69.3% ([Table 2 \(443 Kb Excel sheet\)](#)). This reflects a steady, continuing increase over the last 16 years, from 59.7% in 1997. For patients aged 55 to 64 years at diagnosis, the index increased from 66.8% in 1997, to 76.7% in 2012 ([Table 3 \(443 Kb Excel sheet\)](#)). The corresponding increase for patients aged 75 to 99 years was from 47.4% in 1997, to 57.2% for patients diagnosed in 2012 ([Table 4 \(443 Kb Excel sheet\)](#)).

For individual Clinical Commissioning Groups, the trends are generally similar to the overall national pattern, but the range of the survival index between CCGs for patients aged 15 to 99 is wide, from 51.1% to 64.6% in 1997, to 63.7% to 73.5% in 2012 (Figure 4a-4b).

In 2012, the England one-year survival index for all cancers remained markedly lower for elderly patients (57.2%), compared to middle-aged patients (76.7%). This pattern of lower survival for elderly patients compared to middle-aged patients is evident for all CCGs. The arithmetic difference across all CCGs ranged from 13.4% to 24.0% lower for elderly compared to middle-aged patients, with an average difference across all CCGs of 18.2%.

The north-south gradient in one-year survival is a persistent feature of these data, although it has attenuated somewhat between 1997 and 2012 (Figure 1a-1d). Among CCGs in London, the geographic inequalities in the one-year survival index are only slightly narrower than those observed for the whole of England, with lower survival in the north east of the city. These differences are less marked in 2012 than 1997.

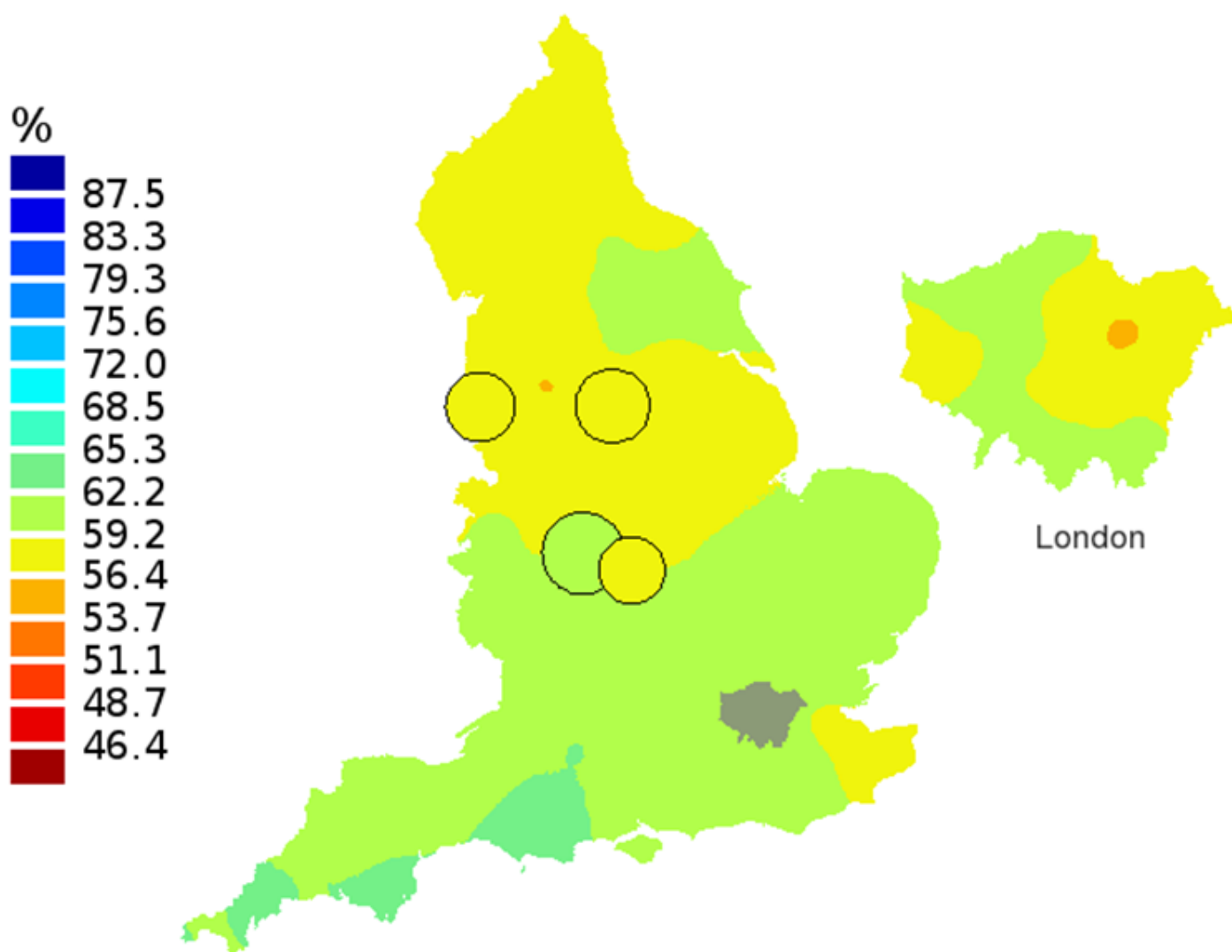
Caution is required in interpretation of this overall index of short-term cancer survival for CCGs. The index does not reflect the prospects of one-year survival for any individual cancer patient. It should not be interpreted as the only indicator of performance, but in conjunction with other information available to the CCG. It should be seen as a guide and raise questions about the potential for improvement. The index is designed for use as a tool for public health management of cancer care, both at local and at national level. Not all cancer patients who live (or lived) in the territory assigned to a CCG are (or were) registered with a GP practice included in that CCG.

The index, nevertheless, provides a convenient, single number that summarises the overall patterns of cancer survival in each CCG, in each calendar year, for men and women, young and old, and for a wide range of cancers with very different survival. Survival for most cancers is either stable or rising steadily from year to year (Rachet et al. 2009). This trend is reflected in the values of the index in the tables. However, the patterns of cancer occurrence by age, sex and type of cancer can shift quite quickly over time, especially in small areas. The survival index is designed to reflect real

progress (or otherwise) by providing a summary measure of cancer survival that adjusts for any such shifts. In short, the index is intended to change only if cancer survival itself actually changes. It is designed for long-term monitoring of progress in overall cancer survival.

List of Figures - Smoothed Maps

Figure 1A: Smoothed maps of the one-year survival index (%) for all cancers combined in 211 Clinical Commissioning Groups: England, 1997, adults aged 15-99 years



Source: Office for National Statistics, London School of Hygiene and Tropical Medicine

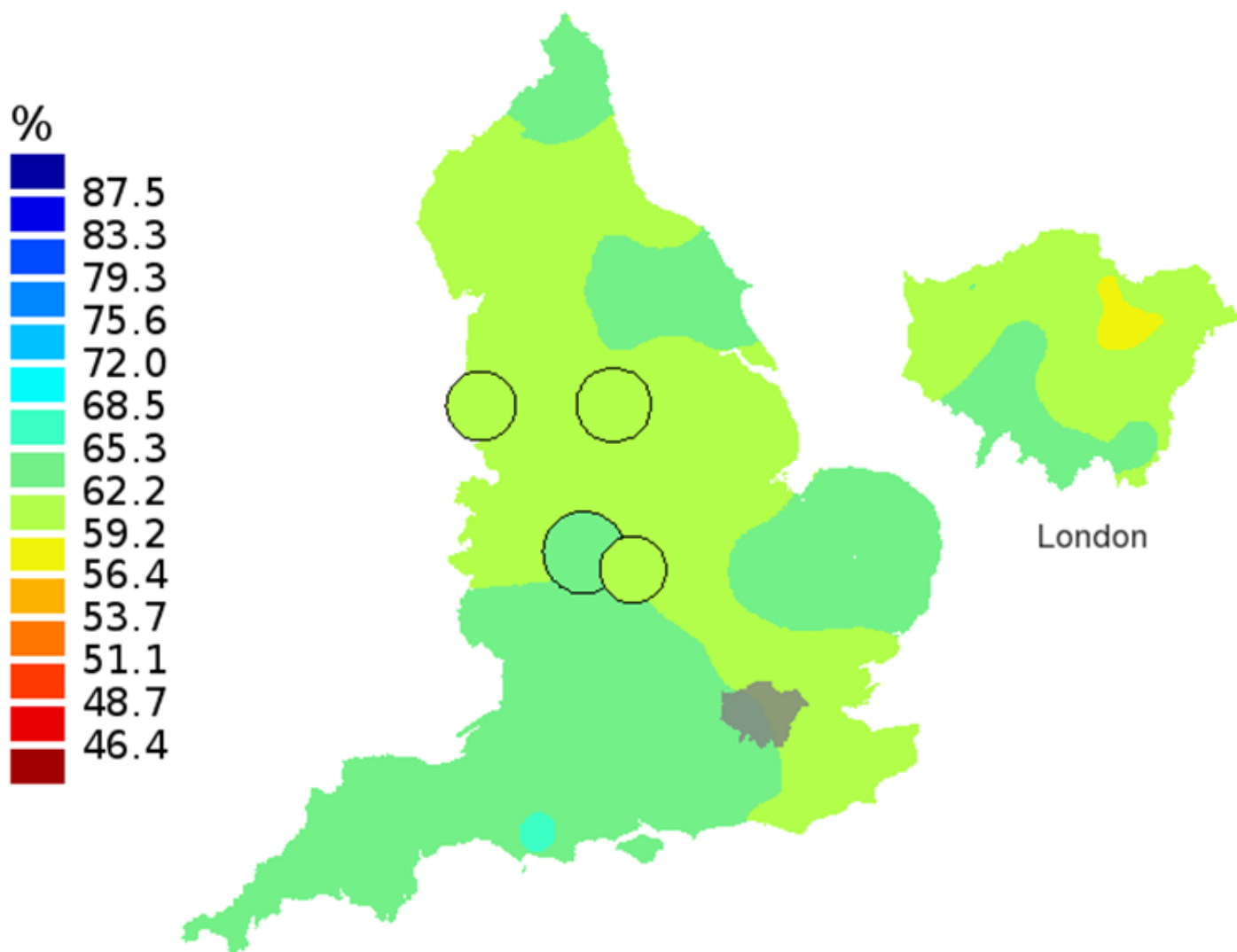
Notes:

1. The circles on the maps represent the CCGs with the largest populations, for which survival estimates are statistically stable and are not included in the smoothing process.

Download map

[PNG](#) [PNG format](#)
(79.2 Kb)

Figure 1B: Smoothed maps of the one-year survival index (%) for all cancers combined in 211 Clinical Commissioning Groups: England, 2002, adults aged 15-99 years



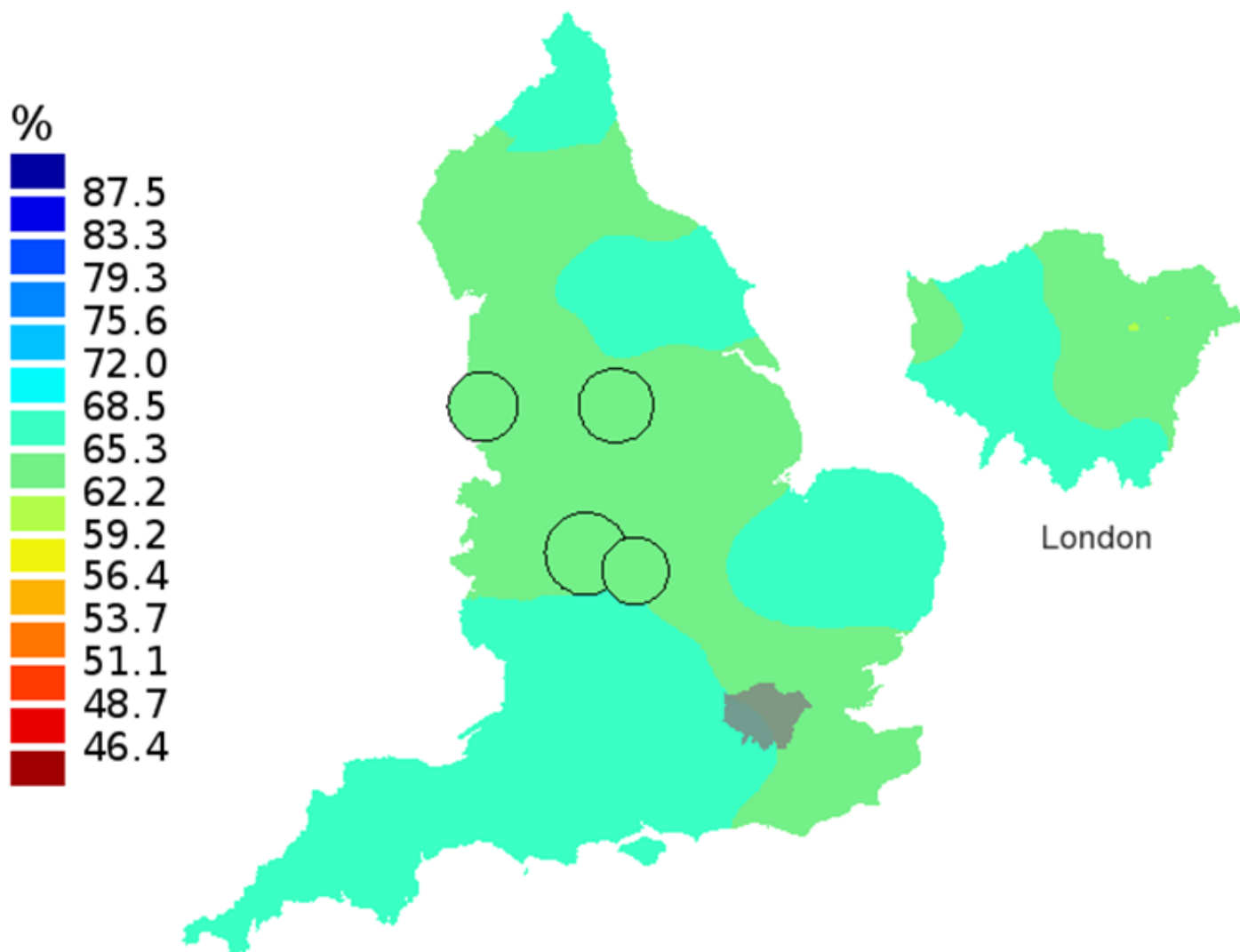
Notes:

1. The circles on the maps represent the CCGs with the largest populations, for which survival estimates are statistically stable and are not included in the smoothing process

Download map

[PNG](#) [PNG format](#)
(79.8 Kb)

Figure 1C: Smoothed maps of the one-year survival index (%) for all cancers combined in 211 Clinical Commissioning Groups: England, 2007, adults aged 15-99 years



Source: Office for National Statistics, London School of Hygiene and Tropical Medicine

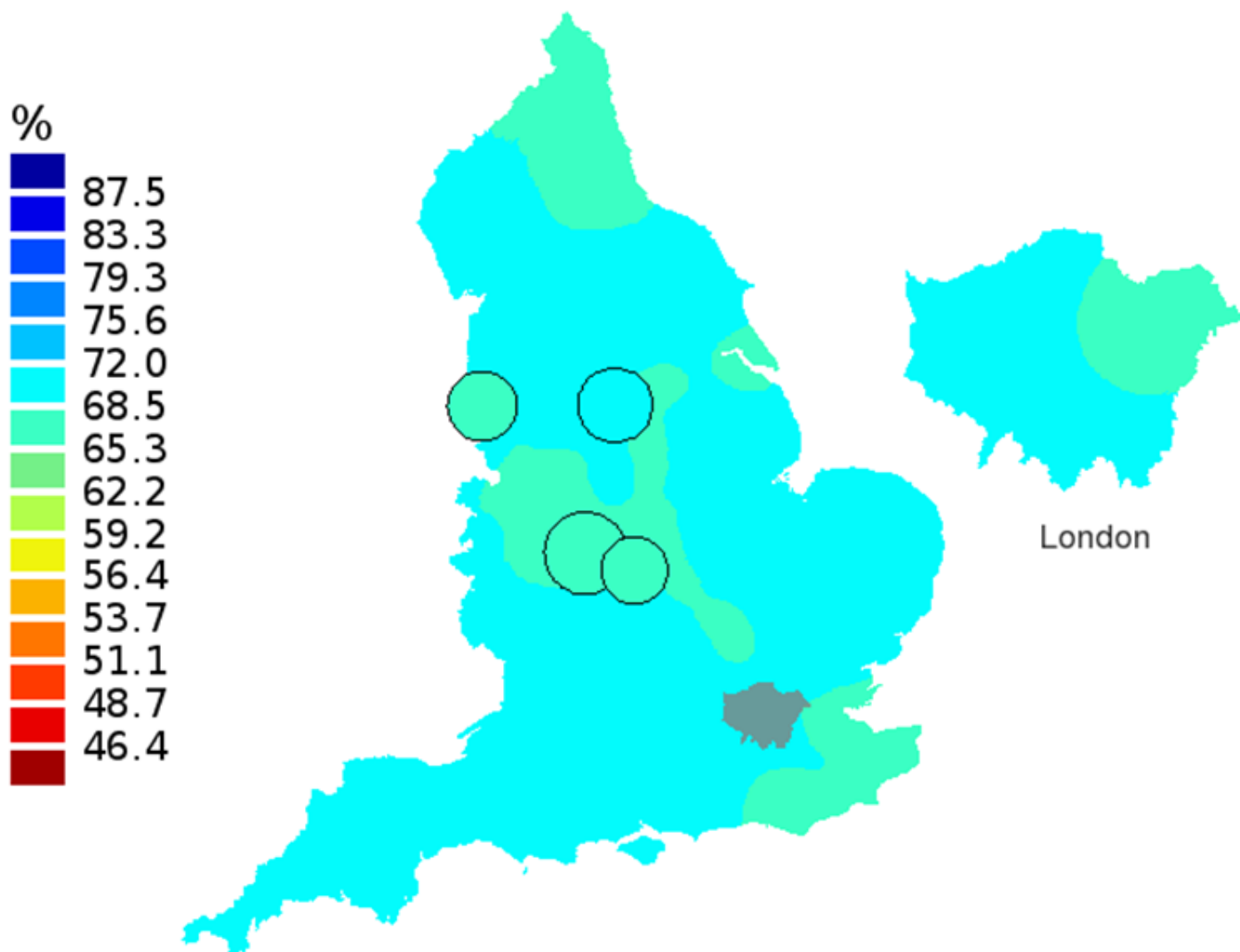
Notes:

1. The circles on the maps represent the CCGs with the largest populations, for which survival estimates are statistically stable and are not included in the smoothing process.

Download map

[PNG](#) [PNG format](#)
(77.9 Kb)

Figure 1D: Smoothed maps of the one-year survival index (%) for all cancers combined in 211 Clinical Commissioning Groups: England, 2012, adults aged 15-99 years



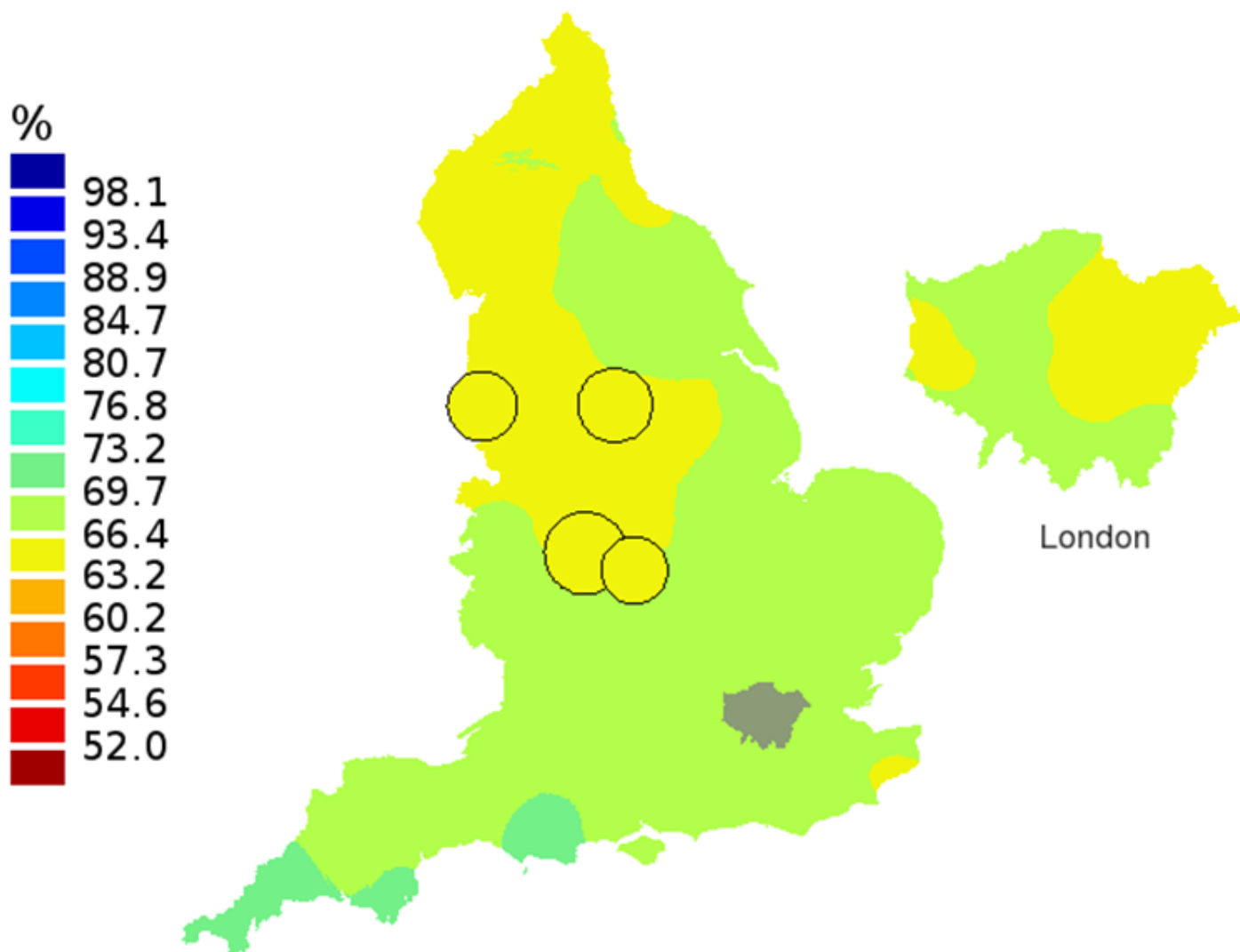
Notes:

1. The circles on the maps represent the CCGs with the largest populations, for which survival estimates are statistically stable and are not included in the smoothing process

Download map

[PNG](#) [PNG format](#)
(72.2 Kb)

Figure 2A: Smoothed maps of the one-year survival index (%) for all cancers combined in 211 Clinical Commissioning Groups: England, 1997, patients aged 55-64 years



Source: Office for National Statistics, London School of Hygiene and Tropical Medicine

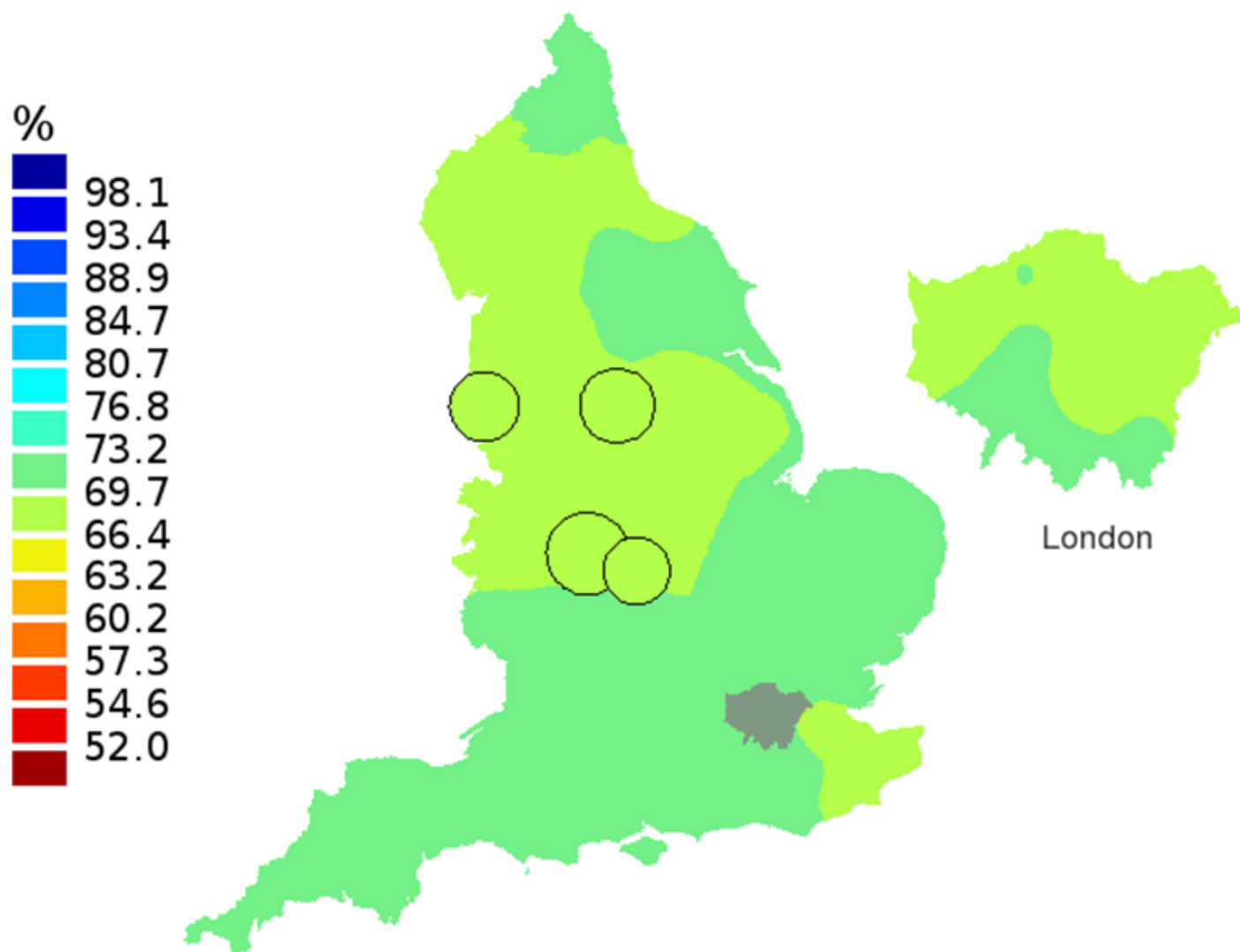
Notes:

1. The circles on the maps represent the CCGs with the largest populations, for which survival estimates are statistically stable and are not included in the smoothing process

Download map

[PNG](#) [PNG format](#)
(78.8 Kb)

Figure 2B: Smoothed maps of the one-year survival index (%) for all cancers combined in 211 Clinical Commissioning Groups: England, 2002, patients aged 55-64 years



Source: Office for National Statistics, London School of Hygiene and Tropical Medicine

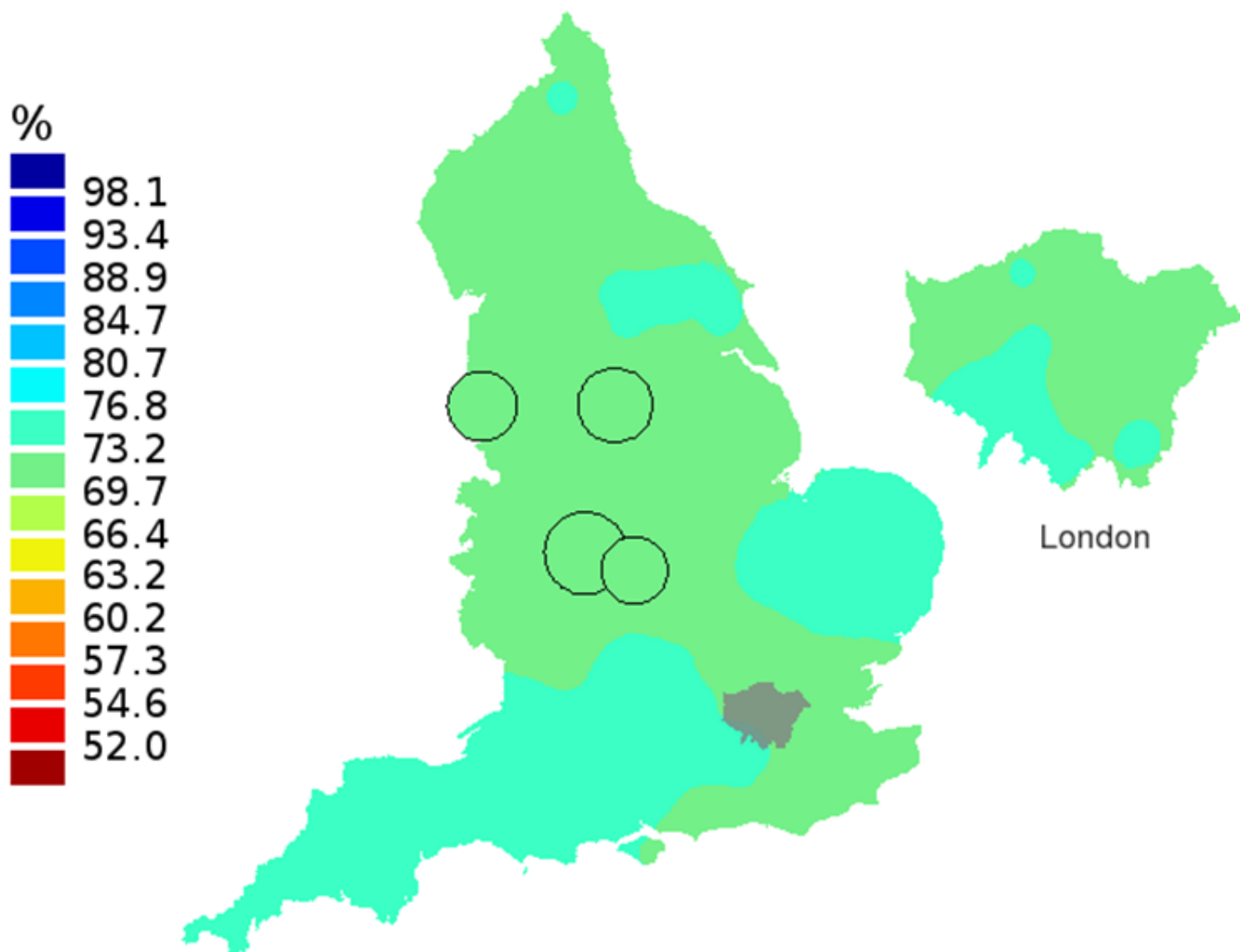
Notes:

1. The circles on the maps represent the CCGs with the largest populations, for which survival estimates are statistically stable and are not included in the smoothing process

Download map

[PNG](#) [PNG format](#)
(82.2 Kb)

Figure 2C: Smoothed maps of the one-year survival index (%) for all cancers combined in 211 Clinical Commissioning Groups: England, 2007, patients aged 55-64 years



Source: Office for National Statistics, London School of Hygiene and Tropical Medicine

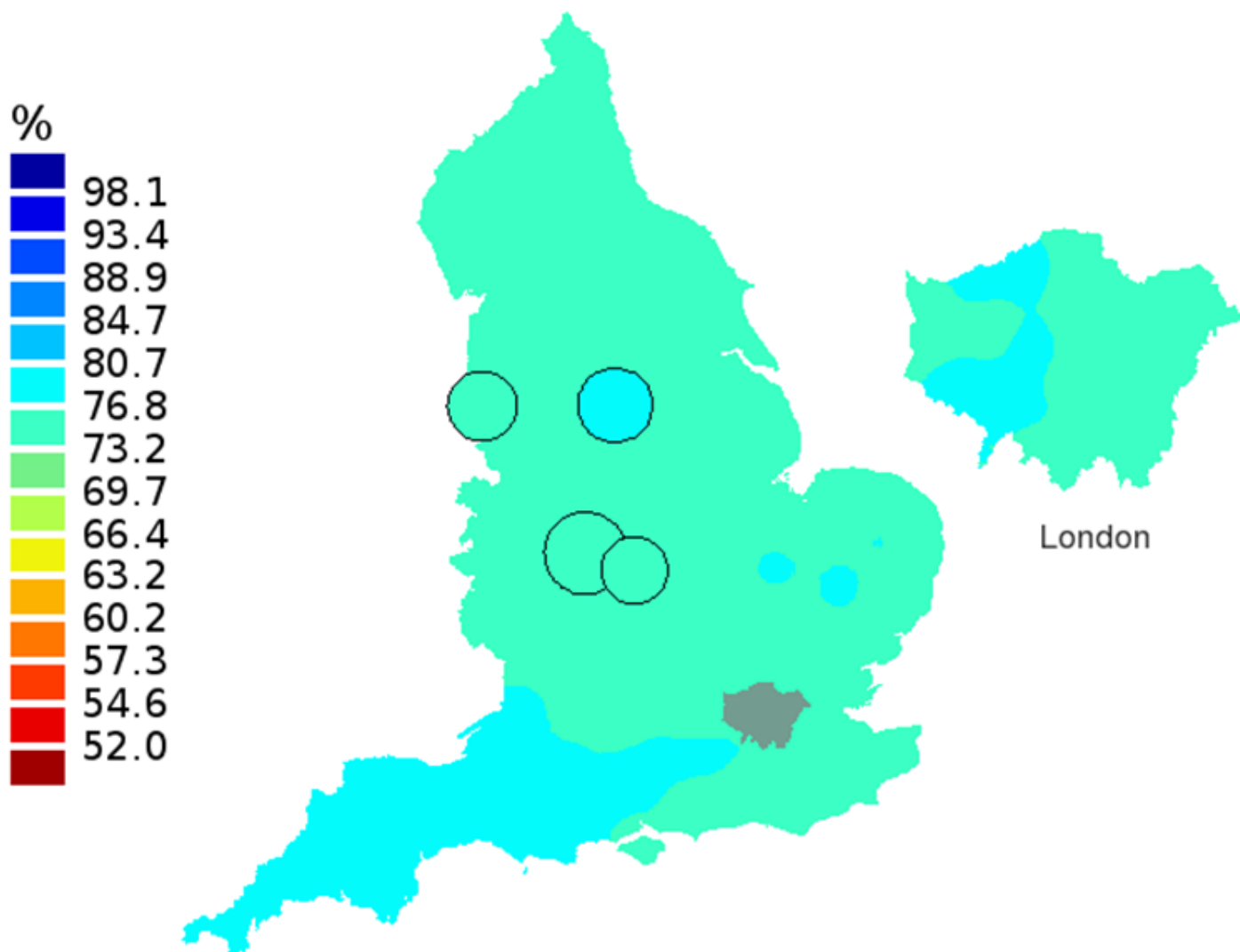
Notes:

1. The circles on the maps represent the CCGs with the largest populations, for which survival estimates are statistically stable and are not included in the smoothing process

Download map

[PNG](#) [PNG format](#)
(79.9 Kb)

Figure 2D: Smoothed maps of the one-year survival index (%) for all cancers combined in 211 Clinical Commissioning Groups: England, 2012, patients aged 55-64 years



Source: Office for National Statistics, London School of Hygiene and Tropical Medicine

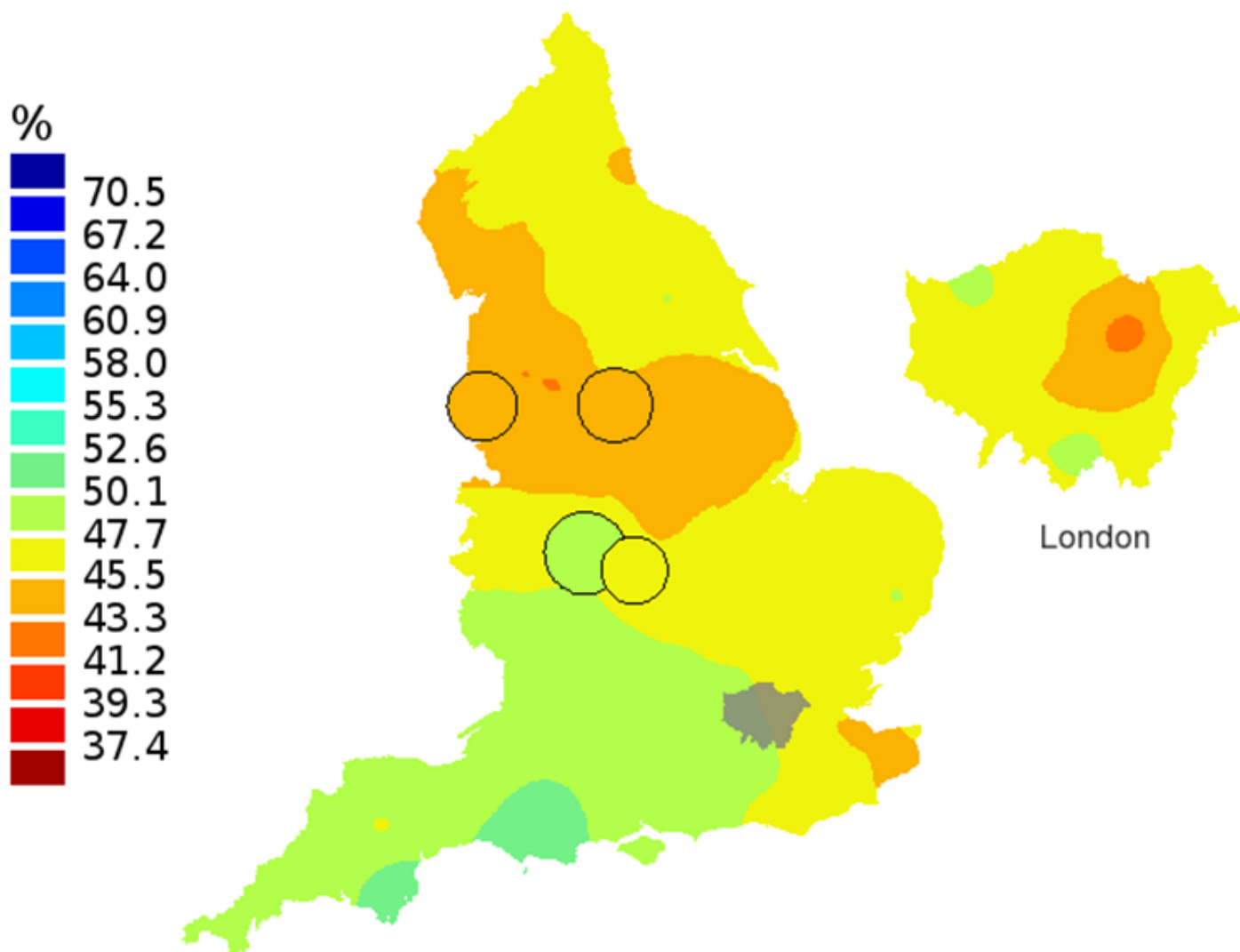
Notes:

1. The circles on the maps represent the CCGs with the largest populations, for which survival estimates are statistically stable and are not included in the smoothing process

Download map

[PNG](#) [PNG format](#)
(72.9 Kb)

Figure 3A: Smoothed maps of the one-year survival index (%) for all cancers combined in 211 Clinical Commissioning Groups: England, 1997, patients aged 75-99 years



Source: Office for National Statistics, London School of Hygiene and Tropical Medicine

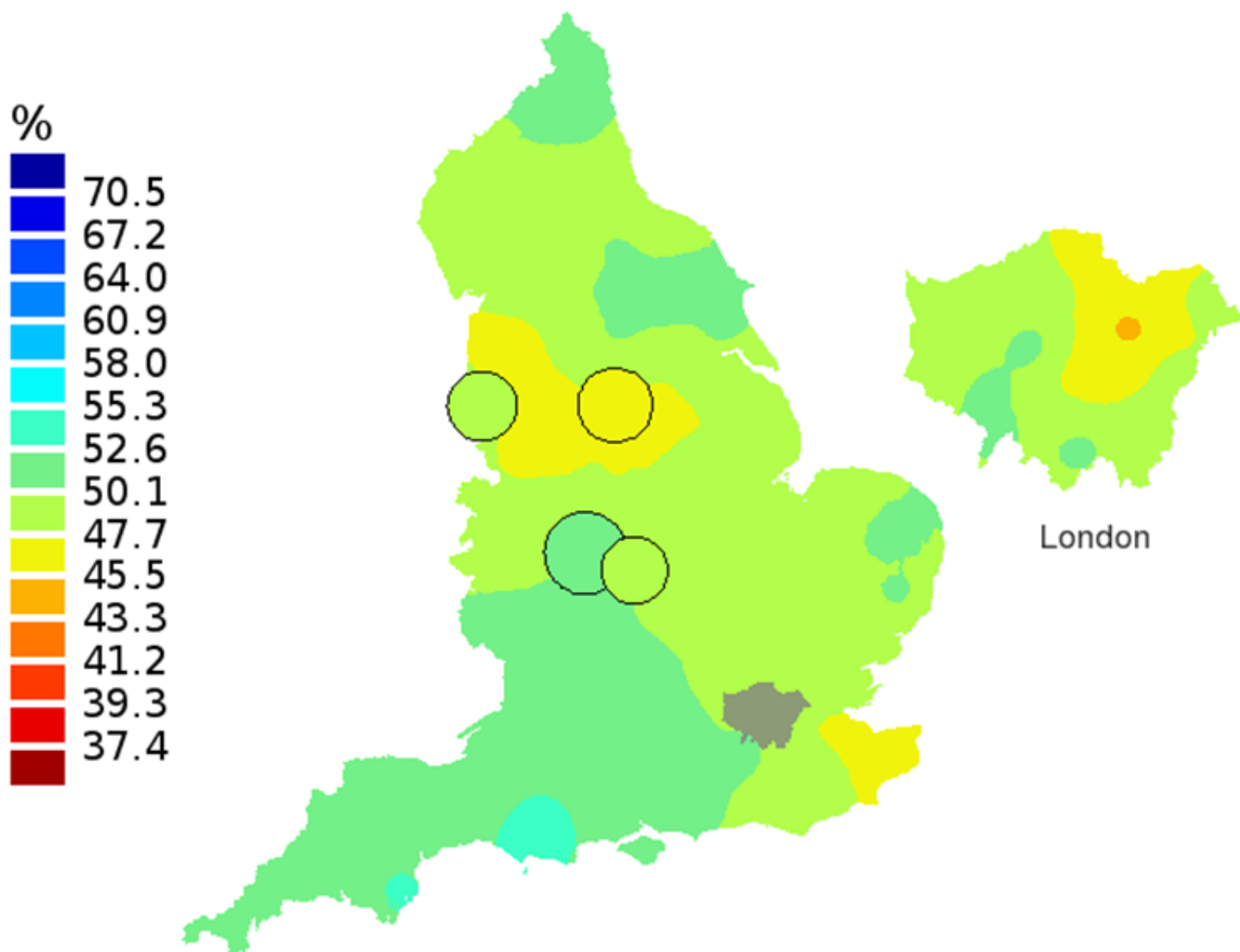
Notes:

1. The circles on the maps represent the CCGs with the largest populations, for which survival estimates are statistically stable and are not included in the smoothing process

Download map

[PNG](#) [PNG format](#)
(81.8 Kb)

Figure 3B: Smoothed maps of the one-year survival index (%) for all cancers combined in 211 Clinical Commissioning Groups: England, 2002, patients aged 75-99 years



Source: Office for National Statistics, London School of Hygiene and Tropical Medicine

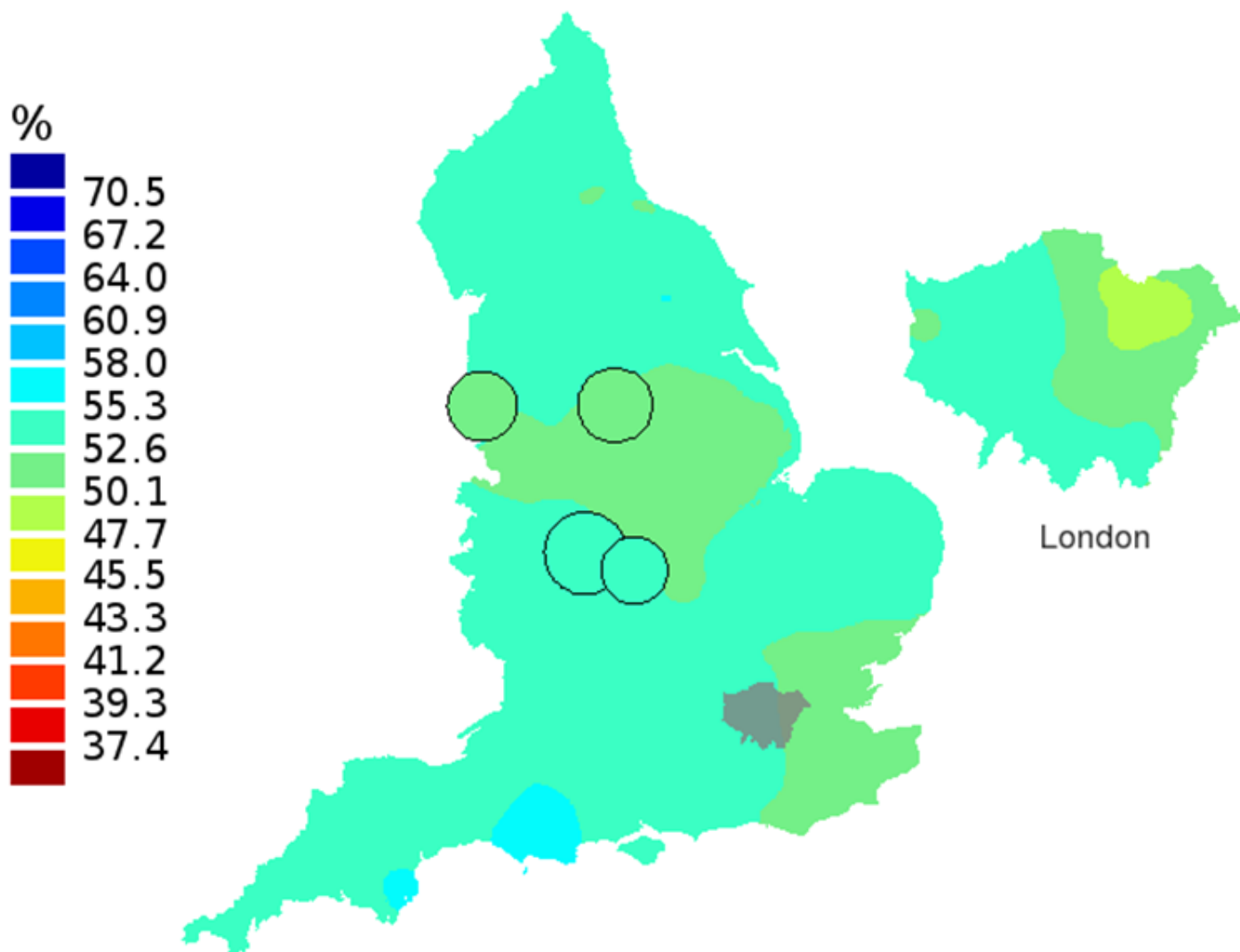
Notes:

1. The circles on the maps represent the CCGs with the largest populations, for which survival estimates are statistically stable and are not included in the smoothing process

Download map

[PNG](#) [PNG format](#)
(84.4 Kb)

Figure 3C: Smoothed maps of the one-year survival index (%) for all cancers combined in 211 Clinical Commissioning Groups: England, 2007, patients aged 75-99 years



Source: Office for National Statistics, London School of Hygiene and Tropical Medicine

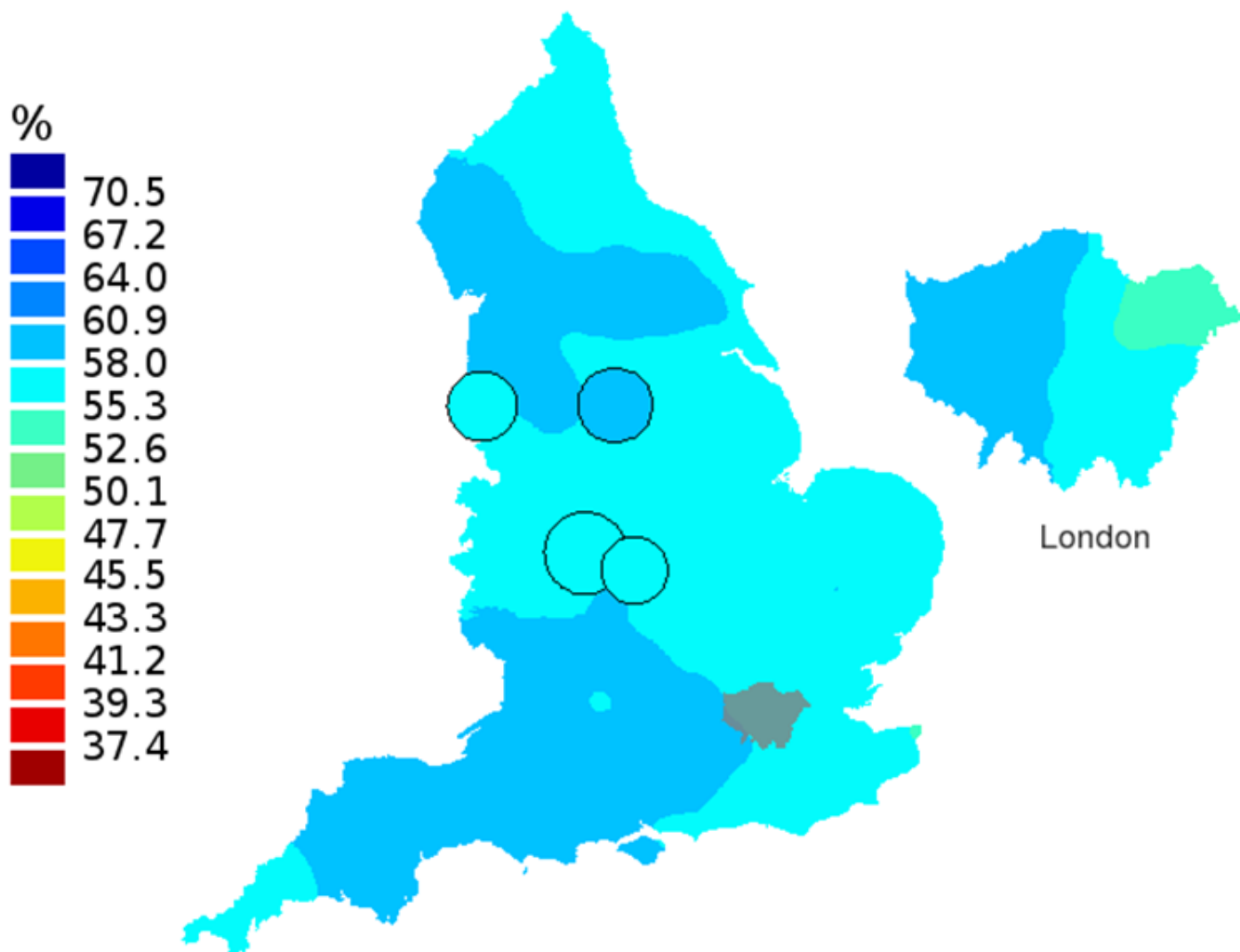
Notes:

1. The circles on the maps represent the CCGs with the largest populations, for which survival estimates are statistically stable and are not included in the smoothing process

Download map

[PNG](#) [PNG format](#)
(79.3 Kb)

Figure 3D: Smoothed maps of the one-year survival index (%) for all cancers combined in 211 Clinical Commissioning Groups: England, 2012, patients aged 75-99 years



Source: Office for National Statistics, London School of Hygiene and Tropical Medicine

Notes:

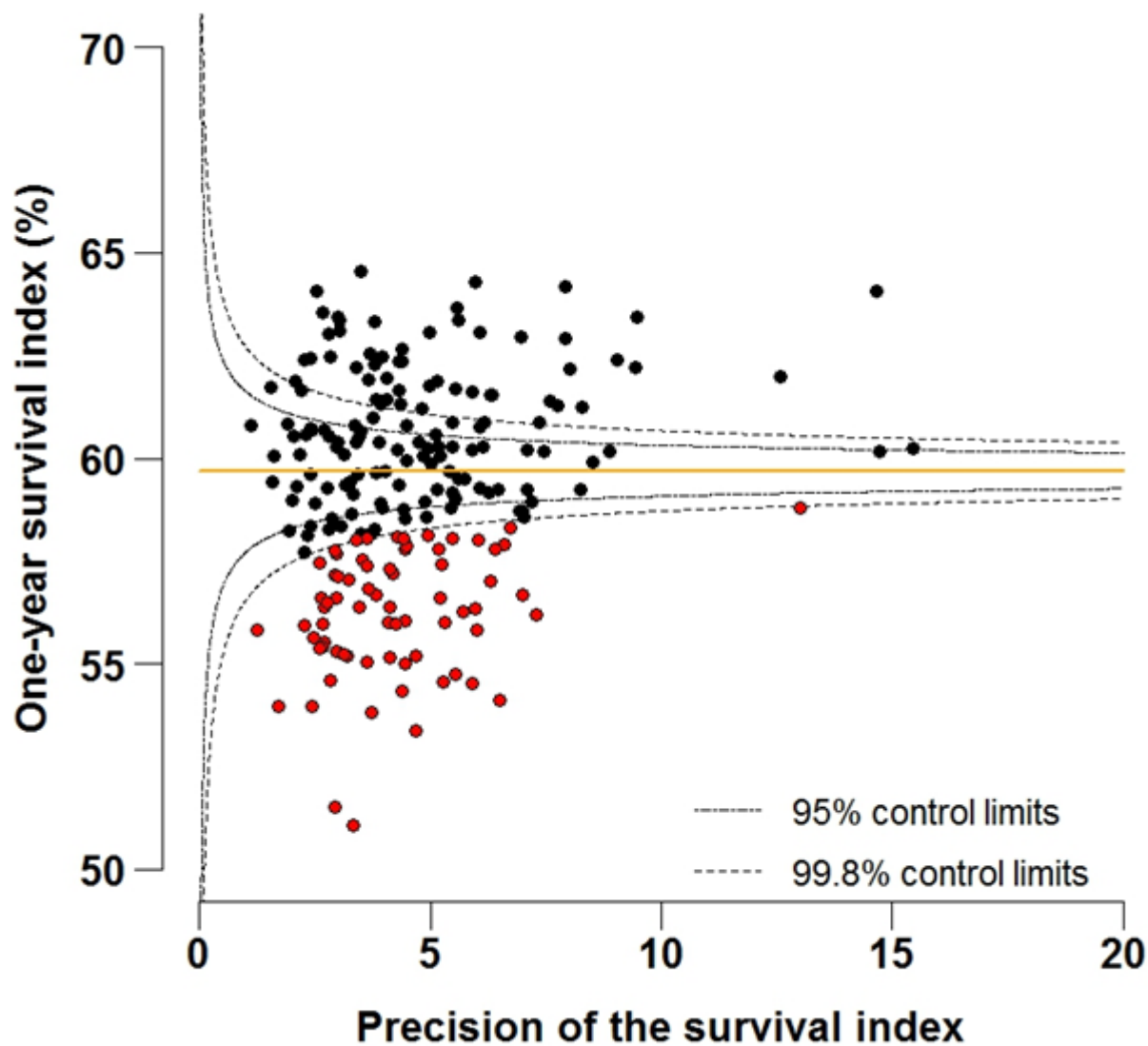
1. The circles on the maps represent the CCGs with the largest populations, for which survival estimates are statistically stable and are not included in the smoothing process

Download map

[PNG](#) [PNG format](#)
(70.2 Kb)

List of Figures - Funnel Plots

Figure 4A: Funnel plot of the one-year survival index (%) for all cancers combined in 211 Clinical Commissioning Groups: England, 1997, all adults (aged 15-99 years)



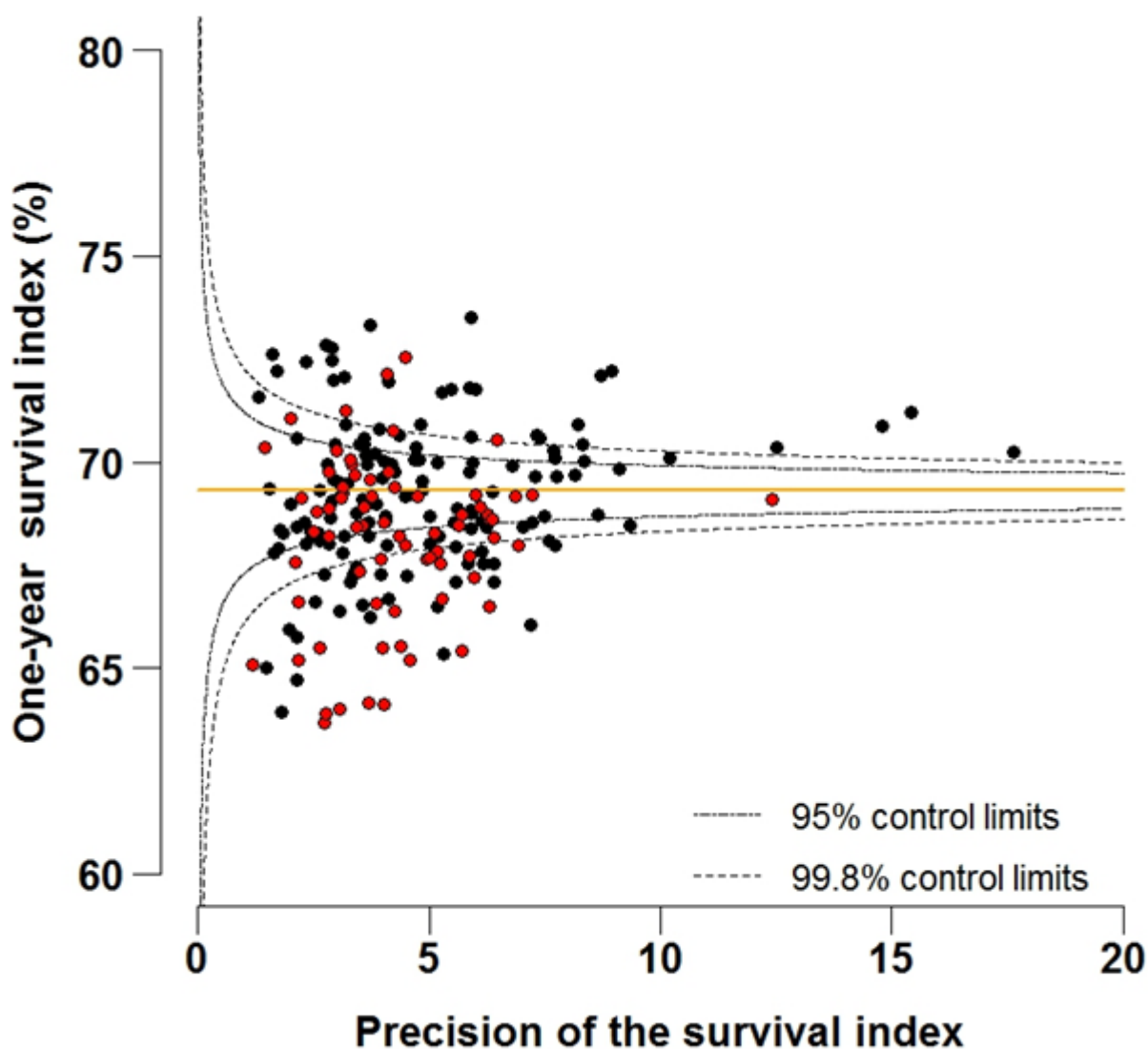
Source: Office for National Statistics, London School of Hygiene and Tropical Medicine

Download chart

[XLS](#) [XLS format](#)

(42.5 Kb)

Figure 4B: Funnel plot of the one-year survival index (%) for all cancers combined in 211 Clinical Commissioning Groups: England, 2012, all adults (aged 15-99 years)

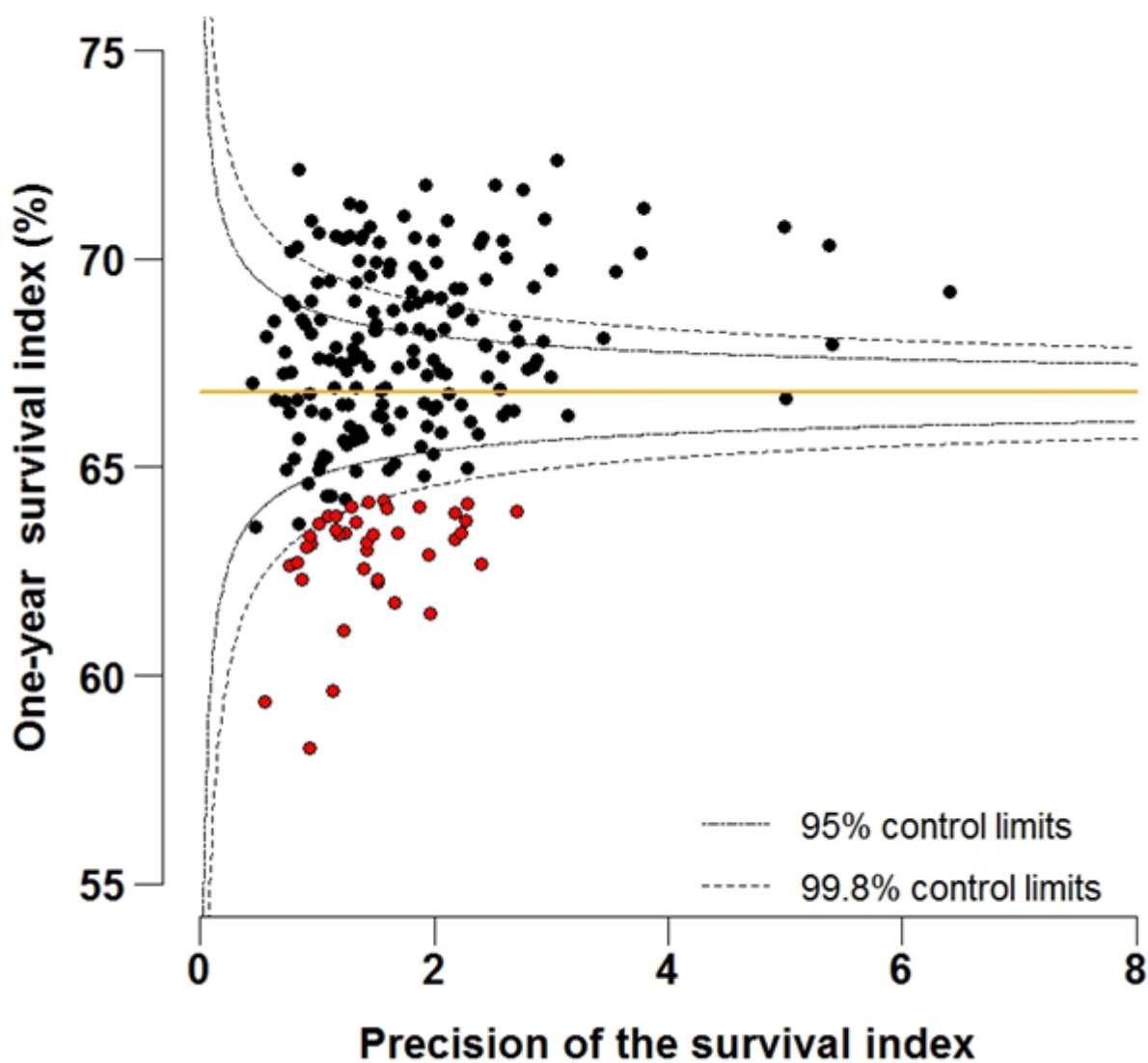


Source: Office for National Statistics, London School of Hygiene and Tropical Medicine

Download chart

[XLS](#) [XLS format](#)
(46.5 Kb)

Figure 5A: Funnel plot of the one-year survival index (%) for all cancers combined in 211 Clinical Commissioning Groups: England, 1997, patients aged 55-64 years



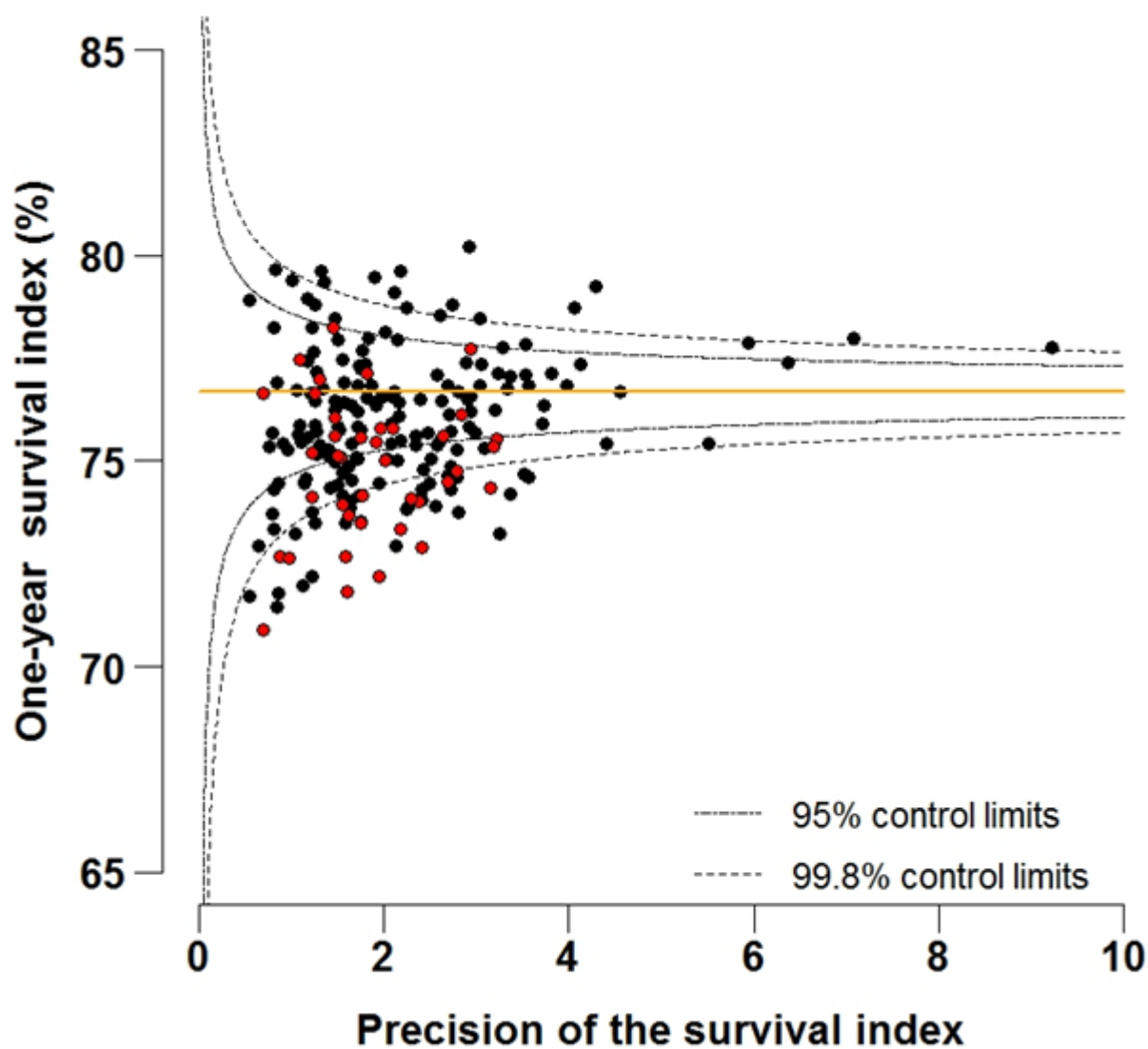
Source: Office for National Statistics, London School of Hygiene and Tropical Medicine

Download chart

[XLS](#) [XLS format](#)

(44 Kb)

Figure 5B: Funnel plot of the one-year survival index (%) for all cancers combined in 211 Clinical Commissioning Groups: England, 2012, patients aged 55-64 years



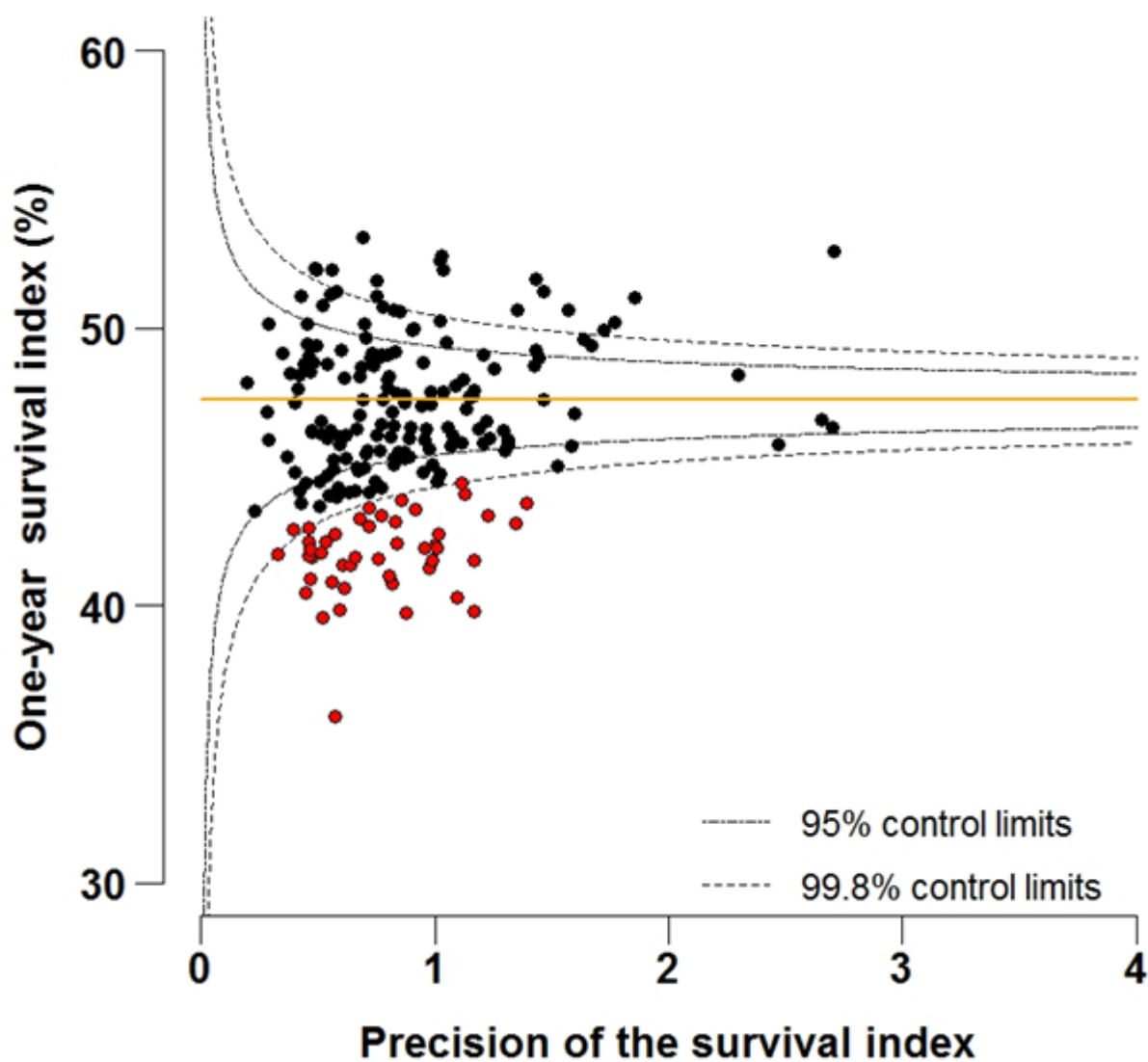
Source: Office for National Statistics, London School of Hygiene and Tropical Medicine

Download chart

[XLS](#) [XLS format](#)

(44 Kb)

Figure 6A: Funnel plot of the one-year survival index (%) for all cancers combined in 211 Clinical Commissioning Groups: England, 1997, patients aged 75-99 years

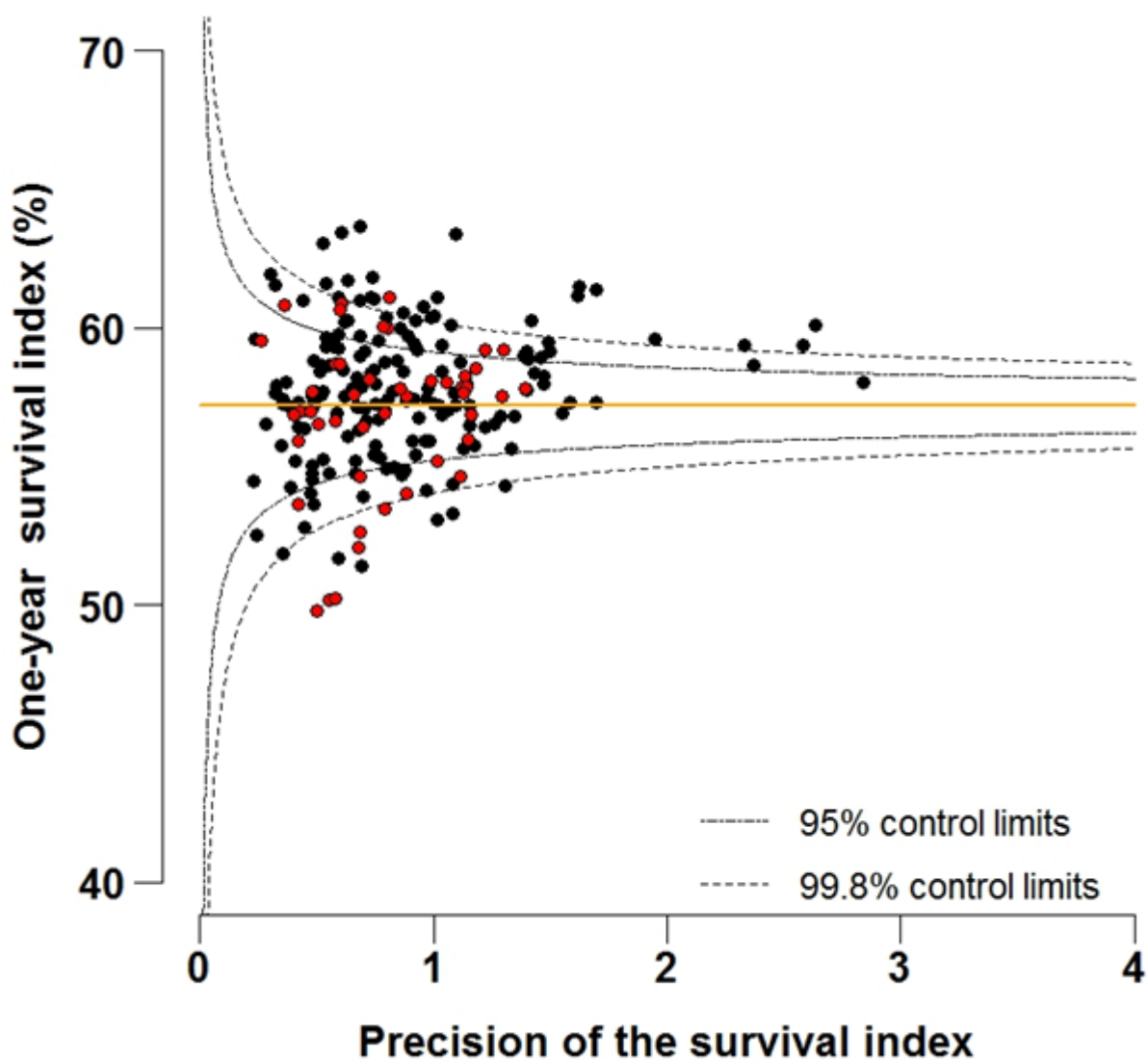


Source: Office for National Statistics, London School of Hygiene and Tropical Medicine

Download chart

[XLS](#) [XLS format](#)
(43.5 Kb)

Figure 6B: Funnel plot of the one-year survival index (%) for all cancers combined in 211 Clinical Commissioning Groups: England, 2012, patients aged 75-99 years



Source: Office for National Statistics, London School of Hygiene and Tropical Medicine

Download chart

[XLS](#) [XLS format](#)

(42 Kb)

Notes on methodology

The approach adopted to compute the index is an extension of conventional standardisation by age, to include both sex and the type of cancer.

We have avoided ranking CCGs from the highest to the lowest on the basis of their survival index in any given year, because:

- The goal is to provide local information to support long-term improvements in cancer control.
- If the highest value of the index is 65% (for example) and the lowest is 50% (a 15% difference), then with 211 CCGs, a difference of just 1% could mean that the rank of a CCG may change by 10, and by 30 or more in the middle of the range, where differences in the value of the index are very small.
- The lowest values of the index in a ranked bar-chart for a given year are not necessarily significantly different from what might be expected, because a bar-chart does not take account of the precision of individual estimates.
- Some year-to-year fluctuation of the index must be expected due to chance alone: if a low value for 2012 (for example) were the only outlying value for a given CCG in 16 years, and there was no trend for the index in that CCG to fall progressively below the national average, then the low value in 2012 might simply represent random fluctuation.
- Trends also matter. A CCG for which the tables show that the survival index is consistently lower than average should be considering why survival in its area might be low.

Additional Information

The [quality and methodology information report on cancer survival](#) has further information about cancer survival estimates.

Quality and methodology information reports (previously known as 'summary quality reports') collect qualitative information on the six Eurostat criteria of quality (relevance, accuracy, timeliness and punctuality, accessibility and clarity, comparability and coherence) and address relevant Key Quality Measures. They also summarise methods used to compile outputs and describe the impact on the quality of estimates produced.

Statistics on cancer are produced:

- in Scotland by the [Scottish Cancer Registry](#)
- in Wales by the [Welsh Cancer Intelligence and Surveillance Unit](#)
- in Northern Ireland by the [Northern Ireland Cancer Registry](#)

Users and uses

Key users of cancer survival estimates include:

- the Department of Health
- academics and researchers
- cancer charities

- cancer registries
- other government organisations
- researchers within ONS
- the media
- the general public.

The Department of Health uses cancer survival figures to brief government ministers, and as part of the evidence to inform cancer policy and programmes; in drives to improve cancer survival, for example. Cancer survival estimates, published by ONS, are also included as indicators in the [NHS Outcomes Framework](#) and the [Clinical Commissioning Group Indicator Set](#), which are used to hold the NHS and commissioners to account. Academics and researchers use the figures to inform their own research. Similarly, Public Health England and other government organisations use the figures to carry out individual and collaborative projects. Charities use the data so they can provide reliable and accessible information about cancer to a wide range of groups, including patients and health professionals via health awareness campaigns and cancer information leaflets/web pages. Researchers within ONS use the data to support further research and to publish alongside other National Statistics.

Policy Context

In '[Improving Outcomes: A Strategy for Cancer](#)' (January 2011), the Department of Health stated that, although improvements have been made in the quality of cancer services in England, a significant gap remains in survival compared with the European average. Survival estimates for cervical, colorectal and breast cancer are some of the lowest among Member States of the Organisation for Economic Co-operation and Development (OECD) (figures for cancer survival in OECD countries are available from the [OECD website](#)). The strategy document sets out how the Department of Health aims to improve outcomes for all cancer patients and improve cancer survival, with the aim of saving an additional 5,000 lives every year by 2014/15.

Outcomes strategies set out how the NHS, public health and social care services will contribute to the ambitions for progress agreed with the Secretary of State in each of the high-level outcomes frameworks. The indicators set for the [National Health Service \(NHS\) Outcomes Framework 2011/12](#) focus on measuring health outcomes and include one- and five-year net survival from colorectal, breast and lung cancers.

References

1. Richards MA. The National Awareness and Early Diagnosis Initiative in England: assembling the evidence. *Br J Cancer* 2009 Dec 3;101 (Suppl. 2):1-4.
2. Anon. The National Awareness and Early Diagnosis Initiative (NAEDI). *NAEDI Newsletter* 2008 Jul 1;1:1-5.
3. Richards MA. The size of the prize for earlier diagnosis of cancer in England. *Br J Cancer* 2009;101 (Suppl. 2):125-9.

4. Quaresma M, Whitehead S, Coleman MP and Rachet B. Index of Cancer Survival for Primary Care Trusts in England: Patients diagnosed 1996-2010 and followed up to 2011. Office for National Statistics 2012.
5. Office for National Statistics. Annual Mid-year Population Estimates for Clinical Commissioning Groups, 2012. Office for National Statistics, 2013.
6. Rachet B, Maringe C, Nur U, Quaresma M, Shah A, Woods LM, et al. Population-based cancer survival trends in England and Wales up to 2007: an assessment of the NHS cancer plan for England. *The Lancet Oncology* 2009 Mar 20;10:351-69.
7. Pashayan N, Powles JW, Brown C, Duffy SW. Excess cases of prostate cancer and estimated overdiagnosis associated with PSA testing in East Anglia. *BJC* 2006;1-5.
8. World Health Organisation. International Classification of Diseases for Oncology (ICD-O), second edition. Percy C, Van Holten V, Muir CS, editors. 1990. Geneva, World Health Organisation.
9. Ashley J. The International Classification of Diseases: the structure and content of the Tenth Revision. *Health Trends* 1990;22:135-7.
10. Danieli C, Remontet L, Bossard N, Roche L, Belot A. Estimating net survival: the importance of allowing for informative censoring. *Statistics in Medicine*. In press 2011.
11. Royston P, Parmar MK. Flexible parametric proportional-hazards and proportional-odds models for censored survival data, with application to prognostic modelling and estimation of treatment effects. *Stat Med* 2002 Aug 15;21(15):2175-97.
12. Lambert PC, Royston P. Further development of flexible parametric models for survival analysis. *Stata Journal* 2009;9:265-90.
13. Akaike H. A new look at the statistical model identification. *IEEE Transactions on Automatic Control* 1974;19:716-23.
14. STATA statistical software [computer program]. Version 10. College Station, Texas: Stata Corporation; 2006.
15. Cancer Research UK Cancer Survival Group. Life tables for England and Wales by sex, calendar period, region and deprivation. 2009 <http://www.lshtm.ac.uk/eph/ncde/cancersurvival/tools/index.html> (accessed 20 Nov, 2014)

Authors

Manuela Quaresma^a, Rose Drummond^b, Stephen Rowlands^b, Paul Brown^b, Neil Bannister^b, Michel P Coleman^a and Bernard Rachet^a

^a Cancer Research UK Cancer Survival Group, London School of Hygiene and Tropical Medicine

^b Cancer Analysis Team, Office for National Statistics

Acknowledgements

We are grateful to many persons without whom this work would not have been possible. The continuing efforts of the National Cancer Registration Service in England to collect data on all cancer patients to the highest standards of quality and completeness are crucial. ONS collates these data, performs additional quality control and links them to information about each patient's vital status in the National Cancer Registry.

We gratefully acknowledge Mr Toni Patama and Professor Eero Pukkala at the Finnish Cancer Registry, who kindly provided the software with which the smoothed maps were produced, and who assisted in their production.

Background notes

1. National cancer registration data for England were received from the National Cancer Registry at the Office for National Statistics (ONS), which collates cancer registrations submitted by the National Cancer Registration Service in England. The Health and Social Care Information Centre (HSC IC) updates these records with the registration of death or emigration. The data used in these analyses were extracted from the live database at ONS on 22 May 2014 and provided to the Cancer Research UK Cancer Survival Group at the London School of Hygiene and Tropical Medicine on the 20th June 2014: the vital status at 31 December 2013 was known for over 99% of these patients.
2. All adults (15 – 99 years) who were diagnosed with a first, primary, invasive malignancy were eligible for inclusion. Patients diagnosed with malignancy of the skin other than melanoma were excluded. Cancer of the prostate was also excluded from the index, because the widespread introduction of prostate-specific antigen (PSA) testing since the early 1990s has led to difficulty in the interpretation of survival trends ([Pashayan et al., 2006](#)).
3. Cancers were defined by anatomic site codes in the International Classification of Diseases, Tenth Revision (ICD-10) and by morphology and behaviour codes in the International Classification of Diseases for Oncology, Second Edition (ICD-O-2) (Ashley, 1990; World Health Organisation, 1990).
4. CCGs came into existence on 1 April 2013. To achieve consistency over time in the geographic units of analysis, cancer patients diagnosed in 1997 – 2012 have been assigned to each CCG territory on the basis of their address at diagnosis. A Clinical Commissioning Group cannot be responsible for trends in cancer outcomes that pre-date its existence, but we reasoned that it would still be useful for CCGs to have a long time series of outcome measures for patients who were resident within their current boundaries at the time of diagnosis, as an up-to-date guide for policy-making at a local level.
5. Net survival in a population of cancer patients is an estimate of their survival from the cancer of interest after adjustment for other causes of death. Net survival was estimated at one year after diagnosis for each cancer, each sex and each year or period of diagnosis, with an excess hazard model in which the all-cause mortality is modelled as the sum of the excess (cancer-related) mortality hazard and the expected (or background) mortality. The background mortality is defined by life tables from the general population. This approach enables population-level cancer survival to be estimated in the absence of detailed data on the cause of death. To obtain an unbiased estimation of net survival, age needs to be carefully modelled to account for the informative censoring associated with age (Danieli et al., 2011). We used flexible parametric models (Royston & Parmar, 2002; Lambert & Royston, 2009) with age and year of diagnosis as main effects and an interaction between age and year of diagnosis. We also examined interactions between year and follow-up time and between age and follow-up time to deal with potential non-proportionality of the excess hazards over time since diagnosis. The Akaike

Information Criterion (AIC) (Akaike, 1974) was used to select the best-fitting statistical model, by testing the relative goodness of fit.

6. A publicly available program (stpm2) was used to estimate net survival (12). Analyses were performed in Stata 13 (StataCorp, 2006).
7. Life tables were constructed for the years 1996, 2001 and 2009 using the mid-year population estimates and the mean annual number of deaths in the three years centred on those index years ([Cancer Research UK Cancer Survival Group, 2004](#)). Life tables for each year from 1996 to 2009 were created by linear interpolation. The life table for 2009 was used for 2010 – 13. Background mortality changes with time and varies by sex, age, socio-economic status and region, so life tables were created by single year of age, sex, region and deprivation quintile for each calendar year of death. National life tables were used for the very small number of patients who could not be assigned to a given region, and regional life tables for those with missing deprivation category.
8. Net survival was initially estimated at one year after diagnosis for cancers of the breast (women), colon and rectum combined, and lung. In all, 1,485,356 patients were diagnosed with these cancers, constituting 58% of all patients included in analyses. Survival for all other cancers combined (excluding non-melanoma skin and prostate cancers) was estimated as a single category. For each CCG and sex, net survival was estimated for each of five age groups at diagnosis (15 to 44, 45 to 54, 55 to 64, 65 to 74 and 75 to 99 years) and each calendar year, using a model that included age and year of diagnosis. The survival index was then constructed as a weighted average of the net survival estimates for each type of cancer, each sex and each age group (see Background Note 10).
9. To make figures from the past comparable with those for today and in the future, it is necessary to adjust an all-cancers survival index for changes over time in the profile of cancer patients by age, sex and type of cancer within each CCG. This is because survival varies widely with all three factors. Overall cancer survival in a given CCG can change simply because the profile of its cancer patients changes, even if survival at each age, for each cancer and in each sex has not changed. For each CCG, this adjustment was made by using a weighted average of all the cancer survival estimates for each age, sex and cancer, using the proportions of cancer patients diagnosed in England and Wales during 1996 to 99 in each age group, sex and type of cancer as the standard weights. All values of the cancer survival index in that CCG, past and future, are adjusted using the same set of standard weights. This means that the cancer survival index is not affected by changes over time in the proportion of cancers of different lethality in either sex – for example, a reduction in lung cancer or an increase in breast cancer. Similarly, the index will be unaffected by a change in the age profile of newly diagnosed cancer patients, or a shift in the proportion of a given type of cancer between men and women.
10. Age-sex-cancer standardisation relies on having an estimate of survival for each combination of age, sex and cancer. It is not always possible to obtain net survival estimates for each of these combinations for each calendar year of diagnosis in geographic units with small populations, because of the limited number of cases. In this situation, which affected 5% of estimates, the missing value was replaced by the estimate for the nearest age group for which an estimate was available for a particular cancer-sex combination, or by the equivalent value for AT or England.

11. Due to a different computational method used in the 2014 bulletin compared to previous years, the precision of the survival estimates are on average 0.9% higher (for the period 1997 to 2011), and there is no impact on the survival estimate themselves. No substantial differences were found regarding the positioning of each estimate on the funnel plots compared to last year's bulletin, and the lower and upper "outliers" in the funnel plots remain the same, with the exception of very minor movements in the positioning of a few Clinical Commissioning Groups falling around the control limits. The precision estimates presented in the bulletin are calculated as the inverse of the variance of each of the survival estimates. Precision estimates are not presented for England in the tables of results (Tables 2-7) because for the whole of England the survival estimates are based on very high precision and this information is not relevant for the interpretation of the results. The survival and precision estimate of each Clinical Commissioning Group (Tables 2-4) can be used to identify the positioning of each Clinical Commissioning Group in the relevant funnel plot (Figures 4a-6b).
12. Differences between survival index estimates between age groups are taken as the arithmetic difference: for example, 12% is shown as 2% (not 20%) higher than 10%. Survival figures are rounded to one decimal place, but the differences are based on the exact underlying figures.
13. A list of the names of those given pre-publication access to the statistics and written commentary is available in Pre-release Access List: Cancer Survival 2007 to 2012, followed up to 2013 . The rules and principles which govern pre-release access are featured within the [Pre-release Access to Official Statistics Order 2008](#).
14. Special extracts and tabulations of cancer data for England are available to order for a charge (subject to legal frameworks, disclosure control, resources and agreement of costs, where appropriate). Such enquiries should be made to:

Cancer and End of Life Care Analysis Team

Health and Life Events Division

Office for National Statistics

Government Buildings

Cardiff Road

Newport

NP10 8XG

Tel: +44 (0)1633 455704

Email: cancer.newport@ons.gsi.gov.uk

The [ONS Charging Policy](#) is available on the ONS website.

15. We would welcome feedback on the content, format and relevance of this release. Please contact cancer.newport@ons.gsi.gov.uk.

16. [Twitter Facebook](#)

17. Details of the policy governing the release of new data are available from the [UK Statistics Authority website](#) or from the [Media Relations Office](#).

The United Kingdom Statistics Authority has designated these statistics as National Statistics, in accordance with the Statistics and Registration Service Act 2007 and signifying compliance with the [Code of Practice for Official Statistics](#).

Designation can be broadly interpreted to mean that the statistics:

- meet identified user needs
- are well explained and readily accessible
- are produced according to sound methods
- are managed impartially and objectively in the public interest

Once statistics have been designated as National Statistics it is a statutory requirement that the [Code of Practice](#) shall continue to be observed.

© Crown copyright 2014.

You may re-use this information (not including logos) free of charge in any format or medium, under the terms of the [Open Government Licence](#). To view this license, write to the Information Policy Team, The National Archives, Kew, London TW9 4DU, or email: psi@nationalarchives.gsi.gov.uk.

Issued by:

Office for National Statistics, Government Buildings, Cardiff Road, Newport NP10 8XG

Media contact:

Tel: Media Relations Office 0845 6041858

Emergency on-call 07867 906553

Email: media.relations@ons.gsi.gov.uk

Produced in partnership with

London School of Hygiene and Tropical Medicine

LONDON
SCHOOL of
HYGIENE
& TROPICAL
MEDICINE



18. Details of the policy governing the release of new data are available by visiting www.statisticsauthority.gov.uk/assessment/code-of-practice/index.html or from the Media Relations Office email: media.relations@ons.gsi.gov.uk

These National Statistics are produced to high professional standards and released according to the arrangements approved by the UK Statistics Authority.

Copyright

© Crown copyright 2014

You may use or re-use this information (not including logos) free of charge in any format or medium, under the terms of the Open Government Licence. To view this licence, visit www.nationalarchives.gov.uk/doc/open-government-licence/ or write to the Information Policy Team, The National Archives, Kew, London TW9 4DU, or email: psi@nationalarchives.gsi.gov.uk.

This document is also available on our website at www.ons.gov.uk.

Statistical contacts

Name	Phone	Department	Email
Neil Bannister	+44 (0)1633 455704	Life Events and Population Sources Division	cancer.newport@ons.gsi.gov.uk

Issuing Body:

Office for National Statistics

Media Contact Details:

Telephone: 0845 604 1858
(8.30am-5.30pm Weekdays)

Emergency out of hours (limited service): 07867 906553

Email:

media.relations@ons.gsi.gov.uk