

Release date: 23rd February 2015.

Next release: 24th February 2015. *Dwelling construction, construction permits, quarters 1–4 2014*

Number 28

More births, fewer deaths, more moderate population decline

Vital events, January–December 2014

According to preliminary data, 91,500 children were born in 2014, 3.2 percent more than a year earlier. The 126,100 deceases registered in 2014 meant a decrease of 0.5 percent compared to 2013. The natural decrease was 34,600, nearly 3,500 persons lower than a year earlier.

According to preliminary data, more children were born, while the number of deceases declined year on year.

The **number of children born** over the year was 3.2 percent higher than in the previous year. The number of live births rose in every month of the year except for a slight decrease in February. The largest growth occurred in April (9.5 percent), and in June and December also considerably more children were born (by 5.8 percent on average) than in the corresponding months of 2013.

The **number of deceased people** fell by 0.5 percent in 2014, which was due to the 678 fewer deceases compared to the previous year. The number of deaths was fewer in seven months, but in five months it was more than in the corresponding periods of 2013. The growth was especially significant in May when by 6.2 percent more deaths were registered than in the previous year, while a similar degree of decline occurred in June (6.4 percent).

The 38,700 **marriages** registered in 2014 were 1,714 (4.6 percent) higher than the value in the year before. In the first nine months of 2014, the number of marriages was continuously higher than in the previous year, and then it showed an uneven picture. The 6.5 percent decrease in October was followed by a 5.3 percent increase in November and by a slight drop again in December. The rise was the largest in February when 21.2 percent more marriages were registered than in the corresponding month of the previous year.

There were 9.3 live births and 12.8 deceases per thousand inhabitants. The former was 0.3 per mille point higher, while the latter was unchanged compared to 2013. The number of infant deaths was 4.6 per thousand live births in 2014, 0.5 per mille point down year on year. The marriage rate of 3.9 per mille was 0.2 per mille point higher than the value in 2013.

The rate of **natural decrease** declined from 3.9 per mille to 3.5 per mille, and, as opposed to 38,089 in 2013, it was 34,600 in 2014.

The **estimated population number** calculated on the basis of the 2011 census taking into account international migration was 9,849 thousand at the end of 2014.

[Methodology](#)

More information: [Detailed tables](#)

E-mail: kommunikacio@ksh.hu

1. A természetes népmozgalom főbb adatai
Main data of vital events

Év, hónap	Házas- ság- kötés	Élveszü- letés	Halálo- zás	Természe- tes szapo- rodás, fogyás (-)	1 éven aluli meghalt	Házas- ság- kötés	Élveszü- letés	Halálo- zás	Természe- tes szapo- rodás, fogyás (-)	1000 élve- szülöttre jutó 1 éven aluli meghalt
<i>Year, month</i>	<i>Marri- age</i>	<i>Live birth</i>	<i>Death</i>	<i>Natural increase or dec- rease (-)</i>	<i>Deceased under 1 year of age</i>	<i>Marri- age</i>	<i>Live birth</i>	<i>Death</i>	<i>Natural increase or dec- rease (-)</i>	<i>Deceased under 1 year of age per thousand live-born</i>
						ezer lakosra – per thousand population				
1960	88 566	146 461	101 525	44 936	6 976	8,9	14,7	10,2	4,5	47,6
1970	96 612	151 819	120 197	31 622	5 449	9,3	14,7	11,6	3,1	35,9
1980	80 331	148 673	145 355	3 318	3 443	7,5	13,9	13,6	0,3	23,2
1990	66 405	125 679	145 660	-19 981	1 863	6,4	12,1	14,0	-1,9	14,8
2001	43 583	97 047	132 183	-35 136	789	4,3	9,5	13,0	-3,4	8,1
2002	46 008	96 804	132 833	-36 029	693	4,5	9,5	13,1	-3,5	7,2
2003	45 398	94 647	135 823	-41 176	690	4,5	9,3	13,4	-4,1	7,3
2004	43 791	95 137	132 492	-37 355	628	4,3	9,4	13,1	-3,7	6,6
2005	44 234	97 496	135 732	-38 236	607	4,4	9,7	13,5	-3,8	6,2
2006	44 528	99 871	131 603	-31 732	571	4,4	9,9	13,1	-3,2	5,7
2007	40 842	97 613	132 938	-35 325	577	4,1	9,7	13,2	-3,5	5,9
2008	40 105	99 149	130 027	-30 878	553	4,0	9,9	13,0	-3,1	5,6
2009	36 730	96 442	130 414	-33 972	495	3,7	9,6	13,0	-3,4	5,1
2010	35 520	90 335	130 456	-40 121	481	3,6	9,0	13,0	-4,0	5,3
2011	35 812	88 049	128 795	-40 746	433	3,6	8,8	12,9	-4,1	4,9
2012	36 161	90 269	129 440	-39 171	438	3,6	9,1	13,0	-3,9	4,9
2013	36 986	88 689	126 778	-38 089	454	3,7	9,0	12,8	-3,9	5,1
2014 ⁺	38 700	91 500	126 100	-34 600	420	3,9	9,3	12,8	-3,5	4,6
2013. 01	945	7 486	11 296	-3 810	32	1,1	8,9	13,4	-4,5	4,3
02	1 126	6 612	10 692	-4 080	34	1,5	8,7	14,1	-5,4	5,1
03	1 804	6 988	11 956	-4 968	38	2,1	8,3	14,2	-5,9	5,4
04	2 266	6 428	10 954	-4 526	35	2,8	7,9	13,5	-5,6	5,4
05	4 318	7 014	9 757	-2 743	34	5,1	8,3	11,6	-3,3	4,8
06	4 325	7 320	10 263	-2 943	45	5,3	9,0	12,6	-3,6	6,1
07	4 679	8 282	10 044	-1 762	48	5,6	9,9	12,0	-2,1	5,8
08	7 035	7 844	9 884	-2 040	44	8,4	9,3	11,8	-2,4	5,6
09	4 543	8 133	9 848	-1 715	33	5,6	10,0	12,1	-2,1	4,1
10	2 488	7 962	10 713	-2 751	37	3,0	9,5	12,8	-3,3	4,6
11	1 591	7 248	10 053	-2 805	41	2,0	8,9	12,4	-3,5	5,7
12	1 866	7 372	11 318	-3 946	33	2,2	8,8	13,5	-4,7	4,5
2014. ⁺ 01	1 069	7 592	11 129	-3 537	36	1,3	9,1	13,3	-4,2	4,7
02	1 365	6 544	10 395	-3 851	38	1,8	8,6	13,7	-5,1	5,8
03	1 960	7 175	11 471	-4 296	37	2,3	8,6	13,7	-5,1	5,2
04	2 442	7 037	10 586	-3 549	29	3,0	8,7	13,1	-4,4	4,1
05	5 004	7 227	10 359	-3 132	24	6,0	8,6	12,4	-3,7	3,3
06	4 529	7 727	9 606	-1 879	47	5,6	9,5	11,9	-2,3	6,1
07	4 743	8 586	9 993	-1 407	35	5,7	10,3	11,9	-1,7	4,1
08	7 137	8 007	9 555	-1 548	37	8,5	9,6	11,4	-1,8	4,6
09	4 622	8 302	9 981	-1 679	29	5,7	10,2	12,3	-2,1	3,5
10	2 326	7 982	10 989	-3 007	46	2,8	9,5	13,1	-3,6	5,8
11	1 675	7 506	10 493	-2 987	28	2,1	9,3	13,0	-3,7	3,7
12	1 828	7 815	11 543	-3 728	34	2,2	9,3	13,8	-4,5	4,4
2013. 01–12	36 986	88 689	126 778	-38 089	454	3,7	9,0	12,8	-3,9	5,1
2014. ⁺ 01–12	38 700	91 500	126 100	-34 600	420	3,9	9,3	12,8	-3,5	4,6

Előző év azonos időszaka=100,0

Corresponding period of the previous year=100.0

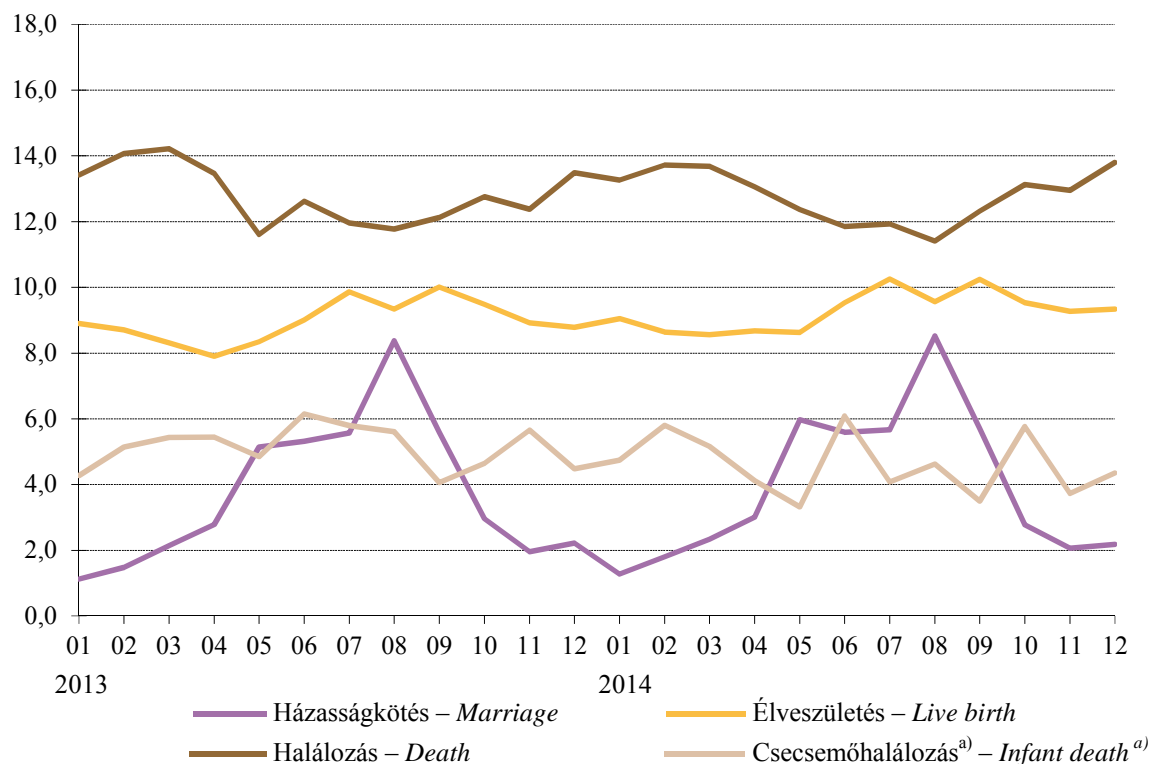
2014. ⁺ 01–12	104,6	103,2	99,5	90,8	92,5	104,9	103,5	99,8	91,1	89,7
--------------------------	-------	-------	------	------	------	-------	-------	------	------	------

+ Előzetes, részben becslült adatok. – Preliminary, partly estimated data.

Megjegyzés: a százalék- és viszonyszámok kiszámítása kerekítés nélküli adatok alapján történt.

Note: percentages and rates have been calculated on the basis of unrounded figures.

A természetes népmozgalom főbb adatai havonta, 2013, 2014⁺ (ezer lakosra)
Main data of vital events by months, 2013, 2014⁺ (per thousand population)



+ Előzetes, részben becült adatok. – Preliminary, partly estimated data.

a) Ezer élveszületésre. – Per thousand live births.