



# DIAMOND DROP PULLOVER

Designed by **IKNITITATIVES/NATALIE WILSON**

## FINISHED SIZE

Chest: 34" [38", 42", 46"]

Length: 21" [21", 23", 23"]

## MATERIALS

11 [13, 16, 18] balls Lana Grossa Bingo  
[100% wool, 88 yds in 50 g]

*Shown in color #05*

80 size 3/0 or 6/0 beads that will  
string onto yarn [purchase a few extra  
in case of breaks or misshapen beads]

## NEEDLES

Size US 7 [4.5 mm] straight or circular  
needles and set of 4 double pointed  
needles size US 7 [4.5 mm] and 16"  
circular needle size US 6 [4 mm] **or**  
**size required to obtain gauge**

Stitch holders [6]

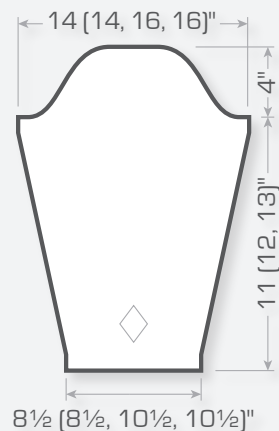
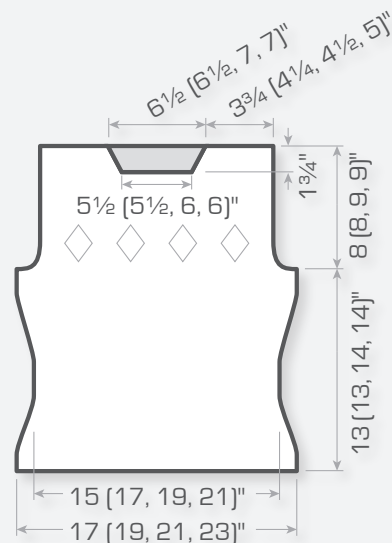
## GAUGE

19 sts and 26 rows = 4" in st st using  
larger needles

## NOTES

1. On some rows, the 11-st motifs  
have only 10 sts due to a st  
having been dropped and not  
yet replaced. St counts given  
are pattern st counts and thus  
always include this st whether  
or not it is present on that row  
EXCEPT at neck, shoulder, and  
sleeve cap edges where actual st  
counts are given. These actual  
st counts are lower than pattern  
st counts by 1 st per 11-st motif  
along that edge.
2. Shaping is worked on WS rows.  
For front and back, place decs  
and incs for waist shaping 5  
sts in from edges. On dec rows,  
work 5 st in pattern, SSK, work  
in pattern to last 7 sts, K2tog,  
work in pattern to end. On inc  
rows, work 5 sts in pattern, m1,  
work in pattern to last 5 sts, m1,  
work in pattern 5. Place decs for  
neck shaping 3 sts in from edge,  
working K2tog on right shoulder  
and SSK on left shoulder. For  
sleeves, place incs 3 sts in from  
edges. Place decs for sleeve  
cap shaping 3 sts in from edge,  
working K2tog at beg of row and  
SSK at end of row.

3. The instructions specify when  
and how many beads to string  
onto the yarn. To place bead  
where indicated in chart, insert  
right needle tip into next st as  
if to P, move bead up yarn until  
snug against last st on RS of  
work, then P the st.



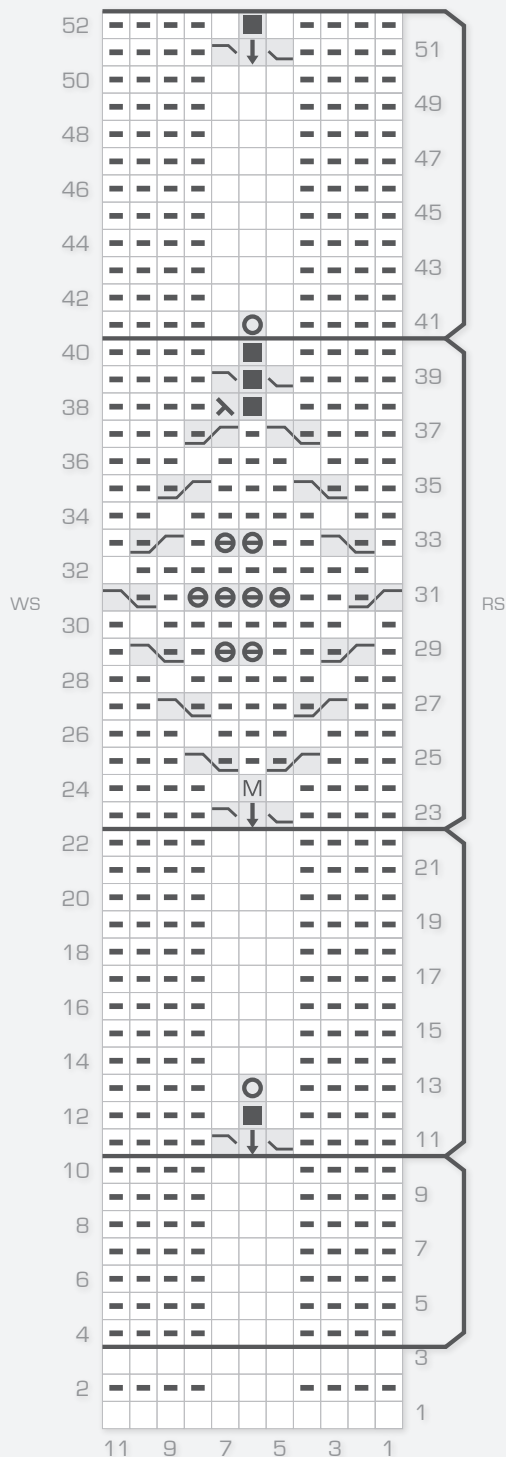
## BACK

CO 82 [92, 102, 112] sts. K 1 row.

**NEXT ROW (WS):** P2, K15 [20, 22, 27],  
{P3, K12 [12, 14, 14]} 3 times, P3, K15  
[20, 22, 27], P2.

**NEXT ROW (RS):** K13 [18, 20, 25], {PM,  
work 11 sts of chart row 3, PM, K4 [4, 6,  
6]} 3 times, PM, work 11 sts of chart row  
3, PM, K13 [18, 20, 25].

Beg with WS (K) row, work in rev st st with  
2 sts at each edge in st st and working  
Diamond Drop Panel (see chart) over the  
four sets of 11 sts between markers. Work



■ P on RS, K on WS

□ K on RS, P on WS

⌞ P2tag TBL

Ⓜ m1

○ yo

⊖ place bead, P1

■ no st

⌞ sl 1 st to CN  
and hold at front,  
P1, K1 from CN

⌞ sl 1 st to CN  
and hold at back,  
K1, P1 from CN

⌞■⌞ sl 1 st to CN  
and hold at front,  
K next st, K1 from CN

⌞↓⌞ sl 1 st to CN  
and hold at front,  
drop next st,  
K next st, K1 from CN

chart rows 4–10 once, then rows 11–22  
7 [7, 8, 8] times **and at the same time**  
shape sides and armholes as follows:

## SHAPE SIDES

Dec 1 st each side on pattern row 8  
[8, 14, 14] then every 6th row 4 times,  
work 9 rows even, then inc 1 st each  
side on next row and then every 6th  
row 4 times. Work even until a total of  
78 [78, 84, 84] pattern rows have been  
worked.

## SHAPE ARMHOLES

BO 3 [3, 4, 5] sts at beg of next 2 rows,  
then BO 2 [3, 3, 4] sts at beg of next 2  
rows, then dec 1 st each end of every  
WS row 4 [5, 6, 6] times — 64 [70, 76,  
82] sts rem. Work even until 92 [92,  
104, 104] pattern rows are complete  
— 94 [94, 106, 106] rows total after CO.  
Break yarn and string 32 beads onto  
it, then continue work without shaping,  
working chart rows 23–51 once. \*\*

Work chart row 52, then rep rows  
41–51. Work pattern row 52, placing  
14 [17, 18, 20] sts on holder for each  
shoulder and 32 [32, 36, 36] center sts  
on holder for back neck.

## FRONT

Work same as for Back to \*\*. Work  
chart row 52, then rep rows 41–51 **and**  
**at the same time**, shape neck as follows:  
Beg with first row 52: Work 19 [22, 23,  
26] sts, join second ball of yarn, work  
26 [26, 30, 30] for front neck and place  
these sts on holder, work in pattern to  
end of row. Working both sides of neck  
at same time and continuing in pattern,  
dec 1 st at neck edge on every WS row  
4 times. Work even until same length as  
back to shoulders. Break yarn and place  
sts on holders — 14 [17, 18, 20] rem  
each shoulder.



## SLEEVES

String 8 beads onto yarn. CO 41 (41, 51, 51) sts. K 1 row.

**NEXT ROW (WS):** P2, K17 (17, 22, 22), P3, K17 (17, 22, 22), P2.

**NEXT ROW (RS):** K15 (15, 20, 20), PM, work 11 sts of chart row 3, PM, K15 (15, 20, 20).

Beg with WS (K) row, work in rev st st with 2 sts at each edge in st st and working Diamond Drop Panel (see chart) over the 11 sts between markers. Work pattern rows 4–10 once, then rows 23–40 once, then rows 41–52 9 (9, 10, 10) times **and at the same time** shape sleeves as follows: Inc 1 st each end of 10th row then every 8th row 12 times — 67 (67, 77, 77) sts. Work even until 109 (109, 121, 121) rows have been completed.

## SHAPE CAP

BO 3 sts at beg of next 2 rows, then BO 2 sts at beg of next 2 rows. Dec 1 st at beg and end of every row 7 times, then every WS row 3 times, then every row 11 times — 14 (14, 24, 24) sts. BO.

## FINISHING

Place shoulder sts on double pointed needles. With Right Sides together, join Front to Back at shoulders using 3 needle BO.

Sew sleeves into armholes. Sew side and sleeve seams.

## NECK BAND

With RS facing and circular needle, beg at right shoulder seam, K32 (32, 36, 36) sts from back neck holder, pick up and K 12 sts down left front neck edge, K24 (24, 28, 28) sts from front neck holder, then pick up and K 12 sts up right front neck edge — 80 sts. Join into the round and work in garter st (P 1 round, K 1 round) for 3 rounds, dec 1 st at each corner of front neck every round — 74 sts. BO loosely.



## ABBREVIATIONS

---

beg.....begin/beginning	Pwise.....purlwise
BO.....bind off	rem.....remain/remaining
CC.....contrasting color	rep.....repeat/repeating
CO.....cast on	rev.....reverse
dec.....decrease/decreasing	RH.....right hand
dbl dec.....double decrease – slip 2 sts together as if to K them together, K1, pass 2 slipped sts over.	RS.....right side
inc.....increase/increasing	sl.....slip
K.....knit	SSK.....slip, slip, knit — sl 1 st as if to K; sl another st as if to K; sl both sts back to LH needle and K them together TBL.
K2tog.....knit 2 together (K3tog = knit 3 together, etc.)	st st.....stockinette stitch
Kwise.....knitwise	st(s).....stitch(es)
LH.....left hand	TBL.....through back loop
m1.....make 1 — Use the tip of your left needle to lift up the strand running between the st just worked and the next st. K into the back of this strand, twisting the loop to avoid making a hole.	W&T.....wrap & turn — Used to prevent holes at the turning point in short rows. With yarn toward WS, sl next st to RH needle, bring yarn to RS, sl st back to LH needle and turn the piece, ready to work back in the other direction.
MC.....main color	WS.....wrong side
P.....purl	WYIF.....with yarn in front
P2tog.....purl 2 together (P3tog = purl 3 together, etc.)	WYIB.....with yarn in back
PM.....place marker	yo.....yarn over
PSSO.....pass the slipped stitch over the st just knitted	