

**TOTALLY
LOND ON[®]**

www.visitlondon.com

visit
LONDON

LONDON 101

ONE HUNDRED & ONE
AMAZING FACTS ABOUT LONDON





London has four World Heritage Sites:
Maritime Greenwich, Kew Gardens,
Tower of London, Palace of Westminster

- 1 One dedicated TV station: London TV is broadcast 24 hours a day on Sky Channel 244** Source: Visit London
- 2 Two Mayors of London: One directly elected every four years, (currently Ken Livingstone) the other is the Lord Mayor of London (currently Alderman Michael Savory)** Source: GLA/Corporation of London
- 3 Three Horse Racing Tracks: Epsom (home to The Derby), Kempton Park and Sandown Park** Source: Visit London
- 4 Four World Heritage Sites: Maritime Greenwich, Kew Gardens, Tower of London, Palace of Westminster** Source: UNESCO
- 5 Five Professional Symphony Orchestras: London Symphony, London Philharmonic, Royal Philharmonic, The Philharmonic, BBC Symphony**
Source: Visit London
- 6 Six Large Neon Advertising Signs at Piccadilly Circus: Coca-Cola, McDonalds, Samsung, Sanyo, TDK, Vodafone** Source: Visit London
- 7 Seven million people live in London: This is estimated to increase to over eight million by 2020** Source: GLA
- 8 Eight Royal Parks: Bushy Park, Green Park, Greenwich Park, Hyde Park, Kensington Gardens, Regent's Park, Richmond Park, St James's Park**
Source: Royal Parks

9 Nine Major Concert Halls: Barbican Centre, Purcell Room, Royal Albert Hall, Royal Festival Hall, Royal Opera House, Queen Elizabeth Hall, St John's Smith Square, Wembley Arena, Wigmore Hall Source: Visit London

10 Ten Farmers' Markets: Blackheath, Ealing, Islington, Marylebone, Notting Hill, Peckham, Pimlico Road, Swiss Cottage, Twickenham, Wimbledon Park

Source: London Farmers' Markets

11 Eleven Professional football teams:* Arsenal, Brentford, Charlton Athletic, Chelsea, Crystal Palace, Fulham, Leyton Orient, Millwall, Queens Park Rangers, Tottenham Hotspur, West Ham United **excludes Watford which is strictly outside the London borders and Barnet who have recently gained promotion to the football league* Source: Visit London

12 London 'Black Cabs' come in Twelve Colours: Black, City Blue, Diamond White, Sunburst Yellow, Sherwood Green, Atlantic Blue, Thistle Blue, British Racing Green, Nightfire Red, Oxford Blue, Storm Grey, Platinum Silver

Source: Mann and Overton London

13 Thirteen Underground Tube Lines: Bakerloo, Central, Circle, District, East London, Hammersmith & City, Jubilee, Metropolitan, Northern, Piccadilly, Victoria, Waterloo & City, Docklands Light Railway Source: TfL

14 Fourteen Blue Plaques added in 2004: There are now almost 800 Blue Plaques in London. They celebrate London's social history Source: English Heritage

15 Fifteen Speakers at Speaker's Corner:* An Act of Parliament in 1872 established Speaker's Corner, Hyde Park, as a place for free speech

**approx number on any given Sunday* Source: Visit London

16 Sixteen Major Exhibition Centres: These include: Business Design Centre, Earls Court, ExCel and Olympia Source: Visit London

17 Seventeen National Museums and Galleries with Free Entrance: These include: British Museum, National Gallery, Tate Modern and V&A Museum Source: DCMS

18 Eighteen Million Collections housed at the British Library: The British Library is the national library of the UK. It is one of the world's largest libraries. Overall there are over 150m items Source: British Library

19 Nineteen Hours to visit every Underground Station: Fastest time to visit every Underground station (there are 275) in one day Source: TfL

20 Twenty Championship Tennis Courts at Wimbledon: Grass courts used during The Lawn Tennis Championships Source: Wimbledon

21 Twenty One miles per hour is the average train speed on the Underground: This speed includes stops Source: TfL

22 Twenty Two Main Line Stations in Central London: Overall there are 321 main line stations in London Source: TfL

23 Twenty Three Casinos: These range from small venues to large multi-table casinos Source: British Casino Association

24 Twenty Four Universities and Colleges:* Some 350,000 students study in London *University of London consists of 18 individual colleges Source: London Higher

25 Twenty Five Members of the London Assembly: The London Assembly is an elected body that supervises the running of London with the Mayor Source: GLA

26 Twenty Six Feet Change in the Level of the River Thames:* The highest and lowest tidal changes occur during the Spring *approx change Source: Port of London Authority

27 Twenty Seven Million Visitors: London annually attracts some 27m overnight visitors. London is the world's most popular city destination

Source: London Visitor Statistics 2004/05

28 Twenty Eight Properties on the Monopoly Board Game: The London edition was devised in the 1930s. A revamped version with a new set of properties will be launched in June 2005 Source: Hasbro



Twenty Seven Million Visitors: London annually attracts some 27m overnight visitors. London is the world's most popular city destination



29 Twenty Nine Panoramic Panels on the Jubilee Walkway: The Jubilee Walkway is the capital's premier walking trail. It was developed for the Queen's Silver Jubilee in 1977 and connects key London attractions Source: Jubilee Walkway

30 Thirty Skyscrapers:* These include: Canary Wharf, Tower 42, BT Tower and Swiss Re Tower ('The Gherkin') **office or residential buildings over 100 metres*

Source: Emporis Buildings

31 Thirty One Tailors on Savile Row: This street has always been renowned as 'the place' for tailoring Source: Visit London

32 Thirty Two Daily Flights between London and Paris: London-Paris is the world's busiest international short haul route. There is on average a flight every 20 minutes Source: Think London

33 Thirty Three Local Authorities: London is divided into 31 Boroughs and the cities of Westminster and London Source: Visit London

34 Thirty Four Pearly Kings and Queens:* The London tradition of Pearly Kings and Queens began in 1875. Originally Pearly Kings and Queens came from East London, but now several pairs reign over different London boroughs

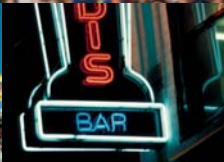
**members of the Pearly Society* Source: Pearly Society

- 35** Thirty Five Years to Build St Paul's Cathedral: The current Cathedral (the fourth to occupy this site) was designed by Wren and built between 1675 and 1710 Source: St Paul's Cathedral
- 36** Thirty Six Michelin Star Rated Restaurants: These include: 1x three star, 4x two star and 31x one star Source: Michelin Guide GB and Ireland 2005
- 37** Thirty Seven Major Crossings over the Thames:* These include: 33 bridges and 4 tunnels *excludes Tube Underground tunnels Source: Visit London
- 38** Thirty Eight Beefeaters at the Tower of London: Officially known as Yeoman Warders, Beefeaters live at the Tower as its guards. There are 36 Yeoman Warders plus the Chief Yeoman and Yeoman Gaoler Source: Historic Royal Palaces
- 39** Thirty Nine Urban Public Parks: London is a uniquely green city with a patchwork of open spaces. Overall, green spaces account for about 30% of the city Source: English Heritage
- 40** Forty Retail Departments at Selfridges: With over half a million square foot of space, Selfridges is the largest store on Oxford Street Source: Selfridges
- 41** Forty One Great Trees of London: Overall, there are some 6m trees in London. The most common is the London Plane, which features in many of the capital's streets and parks Source: Trees for Cities

- 42** Forty Two Film premieres in Leicester Square: Leicester Square played host to 42 film premieres in 2004, including 'The Incredibles', 'Bridget Jones: The Edge of Reason' and 'The Aviator' Source: Westminster Events Team
- 43** Forty Three Hectares of Wetland at the London Wetland Centre: The Centre offers visitors the chance to see rare wetland wildlife just outside Central London Source: London Wetland Centre
- 44** Forty Four Sound Systems at the Notting Hill Carnival: Europe's biggest street party features a wide range of musical styles Source: mynottinghill.co.uk
- 45** Forty Five Minutes to Change the Guard: This royal ceremony is conducted outside Buckingham Palace at 11.30am every other day Source: Visit London
- 46** Forty Six Thousand Five Hundred Entrants: Every year 46,500 people attempt to complete the London Marathon. In all, almost 600,000 have completed the race since its inception, with a record 32,899 crossing the line in 2002 Source: Flora London Marathon
- 47** Forty Seven Major Rock and Pop Venues: These include: Astoria, Barfly, Brixton Academy, Forum, Garage and Marquee Source: Visit London
- 48** Forty Eight Doughty Street: The only surviving London home of Charles Dickens. The author wrote many of his best known stories at this address Source: Dickens House Museum



Forty Four Sound Systems at the Notting Hill Carnival: Europe's biggest street party features a wide range of musical styles



49 Forty Nine Exhibitions open to the public per day:* London's major galleries host a wide range of exhibitions. The most popular in 2004 were: Edward Hopper, El Greco and the Turner Prize **approx number*

Source: Visit London/Arts Newspaper

50 Fifty Non-Indigenous Communities:* London is one of the most diverse cities in the world with 30% of its residents born outside England

**communities with populations of 10,000 or more* Source: The Guardian 21/1/2005

51 Fifty One Nations represented at the first General Assembly of the United Nations: This meeting was held at Central Hall Westminster in 1946. It underlines the fact that London has always been a global meeting point

Source: United Nations

52 Fifty Two Catwalk Designer Shows during London Fashion Week:* London Fashion Week takes place twice a year in February and September. It features many of the leading designers in the world **February 2005 week*

Source: London Fashion Week

53 Fifty Three Different Country Cuisine Styles: There are over 6,000 licensed restaurants in London with menus from 53 major country styles

Source: GLA Economics, Time Out Eating and Drinking Guide 2004

54 Fifty Four Five Star Hotels:* London has some of the finest hotels in the world. Overall there are more than 100,000 rooms in the capital

**November 2002 Source: Visit London*

55 Fifty Five Major Theatres: Overall there are 147 theatres in London. In 2004, almost 12m visits were made to London theatres Source: The Society of London Theatre

56 Fifty Six Nightclubs in Central London:* London's nightlife is varied and vibrant, from traditional London pubs to stylish bars and clubs

**Venues open until 4am, within Westminster only Source: City of Westminster*

57 Fifty Seven Chinese, Japanese and Vietnamese Restaurants located in Chinatown: Chinatown is located in Central London and consists of seven streets Source: Chinatown Online

58 Fifty Eight Metres Below Ground: Hampstead Station is the deepest London Underground station at 58 metres Source: TfL

59 Fifty Nine Norwegian Christmas Trees: A traditional Norwegian Christmas Tree has been displayed in Trafalgar Square since 1947. The fifty ninth will be lit during the first week of December 2005

Source: Norwegian Embassy and Consulate General

- 60** **Sixty Sherlock Holmes Stories:** Sir Arthur Conan Doyle wrote 60 Sherlock Holmes stories. Many were based in London, where Sherlock Holmes lived at 221B Baker Street *Source: Sherlock Holmes Museum*
- 61** **Sixty One Seconds to Open Tower Bridge.*** Tower Bridge opens about 1,000 times per year **average time Source: Tower Bridge*
- 62** **Sixty Two Film Festivals:** There were 62 film festivals in London during 2004
Source: Film London
- 63** **Sixty Three FTSE 100 Firms have Head Offices in London.*** These include global corporate giants such as: BP, HSBC, GlaxoSmithKline and Shell
**January 2005, includes all firms inside the M25 Source: Visit London*
- 64** **Sixty Four Spoke Cables on the BA London Eye:** The London Eye, at 135 metres, is the world's largest observation wheel. It was recently voted the world's best tourist attraction *Source: BA London Eye, Ultimate Destination Poll*
- 65** **Sixty Five Seats on a Routemaster Bus.*** Routemaster double-deckers are being replaced by modern 'Bendy Buses'. However, there are plans to keep six Routemaster Heritage Routes **RM Routemaster (upstairs=36, downstairs=28, driver=1)*
Source: Routemaster Association



Sixty One Seconds to Open Tower Bridge:
Tower Bridge opens about 1,000 times per year



- 66** Sixty Six Different Teas sold by Twinings of London: Twinings has been at the forefront of the tea trade since 1706 Source: Twinings of London
- 67** Sixty Seven Million Passengers handled by Heathrow Airport: In 2004, Heathrow handled 67m passengers, making the airport the world's busiest international airport Source: BAA
- 68** Sixty Eight Kilometres of the River Thames: Within the London borders the river Thames extends to 68km Source: English Heritage
- 69** Sixty Nine Years: The current speaking clock, based upon Greenwich Mean Time (GMT), was introduced in 1936. The Royal Observatory, Greenwich, is home to GMT Source: Royal Observatory
- 70** Seventy Food Stalls at Borough Market: The oldest municipal fruit and veg market in London has recently reinvented itself as a gourmet's paradise
Source: Borough Market
- 71** Seventy One Major Recording Studios: Some of the world's most famous albums have been produced in London. This includes Abbey Road by the Beatles, which was recorded at Abbey Road Studios, St John's Wood
Source: Visit London

72 Seventy Two Cheeses Sold at Neal's Yard Dairy: Neal's Yard Dairy
Covent Garden is one of the largest specialist cheese suppliers in the UK

Source: Neal's Yard Dairy

73 Seventy Three Full Size Football Pitches on Hackney Marshes:*
Hackney Marshes has one of the largest concentrations of grass football
pitches in Europe **there are also 2 full size rugby pitches* Source: Hackney Borough

74 Seventy Four London MPs: There are currently 44 Labour, 21 Conservative,
8 Liberal Democrats and 1 Respect Source: UK Parliament

75 Seventy Five Percent of London 2012 Tickets: If London wins the right to
host the 2012 Olympics, three quarters of all tickets will cost less than
£50 and offer free travel on London transport Source: London 2012

76 Seventy Six Plays Showing in London per day:* There are also on average
33 Musicals, 19 Operas and 16 Dance performances **approx number*

Source: Society of London Theatre

77 Seventy Seven Percent of Visitors pass through London:* London acts as a
gateway to the rest of the UK **Overseas visitors to the UK who visit via a London airport
(Heathrow, Gatwick, London City, Luton and Stansted)* Source: National Statistics

- 78** **Seventy Eight Dongs of Big Ben:*** The main bell of Big Ben rings 78 times during a 12 hour cycle **does not include quarter bells* Source: Palace of Westminster
- 79** **Seventy Nine Fuller's Pubs:** Fuller's is one of the UK's leading independent brewers and retailers, famous for London Pride beer Source: Fuller, Smith and Turner
- 80** **Eighty Miles of Canals:*** London has an extensive canal network including the Grand Union Canal and Regent's Canal **approx* Source: English Heritage
- 81** **Eighty One EU Owned Banks:** London is Europe's principal business centre. Overall there are 242 foreign-owned banks present in the capital
Source: The Banker
- 82** **Eighty Two Percent of Overseas Visitors rate Londoners as friendly:** Contrary to popular belief, eight in ten visitors find Londoners friendly or very friendly Source: London Overseas Visitors Survey 2003/04
- 83** **Eighty Three Markets:** London has a vast array of markets from covered antique emporiums to funky street markets Source: Visit London
- 84** **Eighty Four Metres:** The Lloyd's of London building is 84 metres high. Lloyd's is the world's leading centre for international insurance and reinsurance Source: Lloyd's of London



Eighty Miles of Canals: London has an extensive canal network including the Grand Union Canal and Regent's Canal



- 85** Eighty Five Percent of UK Fashion Designers are based in London: London is a major centre for design and fashion. World famous designers based in London include: Julien Macdonald, Paul Smith and Jasper Conran Source: Think London
- 86** Eighty Six Pounds: The average visitor to London spent £86 per day in 2003
Source: London Visitor Statistics 2004/05
- 87** Eighty Seven Ghost Stations: Underground and Main Line stations that have opened and then closed Source: London's Transport Museum
- 88** Eighty Eight Traditional Cockney Recipes: These include: Bartelmas Beef, Jellied Eels, Pie and Mash, Steak and Oyster Pie Source: The Cockney Cookbook
- 89** Eighty Nine Year Old 'Busker Bill': The oldest licensed busker playing on the Underground Network is 'Busker Bill' Source: TfL
- 90** Ninety Thousand Seats: The capacity of the redeveloped National Stadium at Wembley will be 90,000. Wembley is due to reopen in May 2006 Source: Wembley
- 91** Ninety One Types of Meat available at Smithfield Market:* Meat has been bought and sold at Smithfield for over 800 years, making it one of the oldest markets in London *approx Source: Corporation of London
- 92** Ninety Two Major Carnivals and Festivals: Overall, London annually plays host to more than 200 carnivals and festivals Source: Visit London

93 **Ninety Three Squares in Central London:*** London has a vast number of garden squares. Overall, there are some 600 in the whole of the city

**Westminster only* Source: English Heritage

94 **Ninety Four Percent of Buses are Wheelchair Accessible:** At October 2004, 94% of the total bus fleet of 8,000 was wheelchair accessible. With the exception of Routemasters, 100% of London Buses should be wheelchair accessible by October 2005 Source: TfL

95 **Ninety Five Cinemas:** There are almost 500 cinema screens in London, showing on average a choice of 130 films Source: GLA: Picture Perfect Report

96 **Ninety Six Brilliants:** The Cullinan diamond (the largest diamond ever found) had 96 brilliants cut from it. Most of these brilliants make up part of the Crown Jewels, which are on display at the Tower of London

Source: Historic Royal Palaces

97 **Ninety Seven Reptile Species at London Zoo:*** Overall, London Zoo also has: 161 fish species, 119 bird, 97 reptile, 93 mammal and 15 amphibian

**includes animals at Whipsnade Wild Animal Park* Source: London Zoo

- 98** **Ninety Eight Nature Reserves: Local reserves with wildlife or geological features that are of special interest** Source: English Heritage
- 99** **Ninety Nine Bus Routes in Central London: There are over 700 different routes in the whole of London. This makes the capital one of the largest urban transport systems in the world** Source: TfL
- 100** **One Hundred Miles of Shelving at the National Archives: The National Archives at Kew has one of the largest archival collections in the world spanning 1,000 years of British history** Source: National Archives
- 101** **One Hundred & One Golf Courses: London offers some of the best urban courses in the world. There are a further 35 courses on the London borders** Source: The Sunday Telegraph Golf Course Guide to Britain and Ireland 2004

The information in this report was believed to be correct at the time of going to print and while every effort has been made to ensure accuracy, Visit London cannot be held responsible for errors or omissions

No part of this publication may be reproduced without written permission from Visit London

Visit London is the official visitor organisation for London. It is partly funded by private sector partners, the Mayor's London Development Agency and the Association of London Government

Further statistical and factual information about London can be found at visitlondon.com/corporate/facts_figures/

Designed by www.luminous.co.uk June 2005

Supported by

MAYOR OF LONDON

LONDON
DEVELOPMENT
AGENCY

HSBC 
The world's local bank



Ninety Eight Nature Reserves: Local reserves with wildlife or geological features that are of special interest



**TOTALLY
LOND ON**®

www.visitlondon.com

visit
LONDON

Visit London

6th Floor

2 More London Riverside

London SE1 2RR

T +44 (0)20 7234 5800

F +44 (0)20 7234 5750

visitlondon.com

