



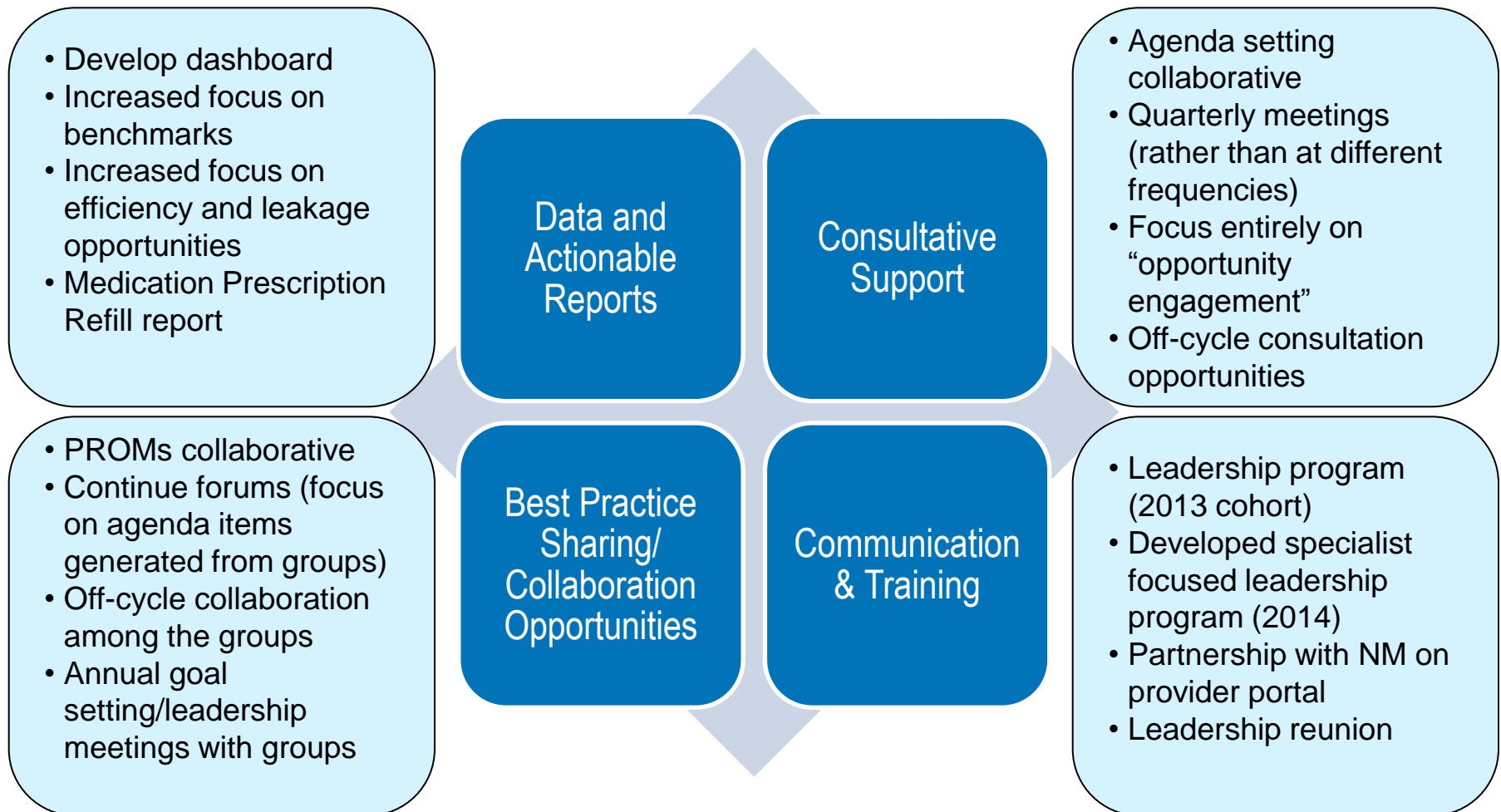
Data Sharing: What do providers and payers need to succeed and how can they best help one another

Lisa Whitemore

Vice President, Network Performance Improvement
Blue Cross Blue Shield of Massachusetts

February 28, 2014

Our four-pronged support model is designed to help provider groups succeed in the AQC



AQC Update: Focus on Efficiency



MASSACHUSETTS

Sample Group Performance Indicators

1. Trend - Past 5 qtrs



Qtr 3 2013

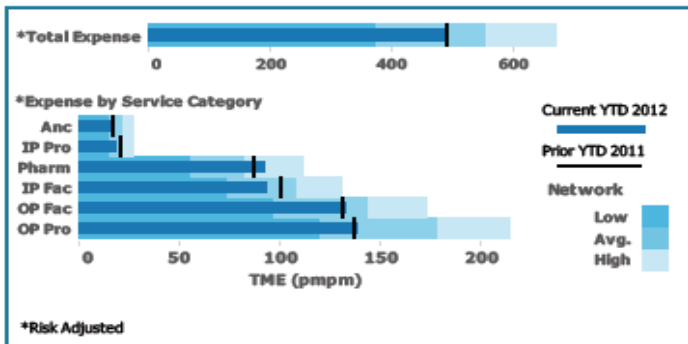
DxCG	1.807
Membership	39,895
TME Spend	491.95
Budget	516.78

2. YTD 2012 % Potentially Avoidable ED Visits

asthma	5.0%
backpain	2.8%
bronchitis	1.1%
contusion	2.7%
fever	1.4%

* Red font indicates rate higher than network

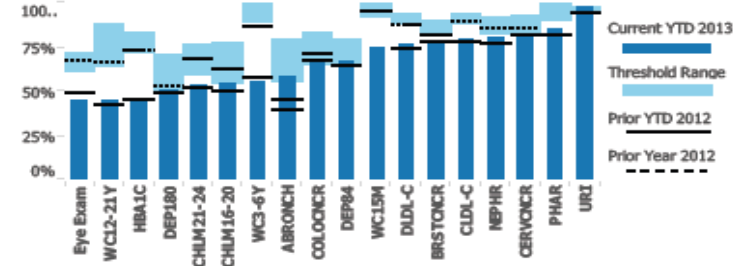
3. Expense Category



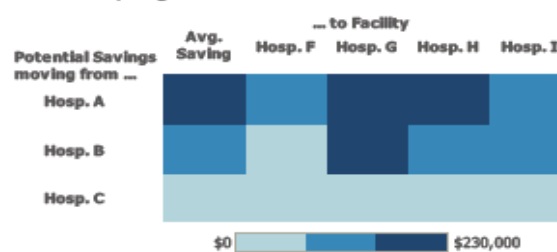
4. Condition Category Opportunities - YTD 2012



5. Ambulatory Care Measure Rates



6. IP Med/Surg low wt DRG - YTD2012



Improvement Opportunities:

- Outpatient Facility
- Depression Screening
- Move admissions to Hospital F

7. Med/Surg Retention

