

C
10.5"
267



Hannay Reels®
The reel leader.

Firefighting Reels

- | Preconnect or Storage | No Draining, Stacking, or Dragging | All Sizes and Capacities |
- | Efficient Use of Vehicle Space | Increased Hose Capacity | Faster Clean-up | ARFF |



**You Can't Buy
A Better Reel.**

Family owned and operated since 1933

Contents

| Reel Type | I.D. Hose Sizes | Page |
|---|------------------|-------|
| How to Specify Hannay Reels | | 3 |
| Manual or Power Rewind Reels | | |
| Series F4000 | 3/4" or 1" | 4 |
| Series F4100 | 3/4" or 1" | 5 |
| Series F | 3/4" or 1" | 6-7 |
| Series SF | 3/4" or 1" | 8-9 |
| Twin Fire Reel Conversion Kit | | 10 |
| Series FF - Booster Hose | 1-1/4" or 1-1/2" | 10-11 |
| Collapsible Hose | 1-1/2" or 1-3/4" | |
| Series F7100/FF7200 - Dual Hose | 3/4" – 1-1/2" | 12-13 |
| Swing-Out Reel - Single Hose | 1" – 1-1/2" | 14-15 |
| Dual Hose | 1" – 1-1/2" | |
| Manual Rewind Reels | | |
| Series F3100/FF3600 - Booster Hose | 3/4" – 1-1/2" | 16-17 |
| Collapsible Hose | 1" – 1-3/4" | |
| Manual or Power Rewind Reels - Large Diameter | | |
| Series LD Reels and Spools | 1-1/2" – 6" | 18-19 |
| Mercedes and Niedner Capacities | | 20 |
| Hannay Reels Versatility | | 21 |
| Hannay Reels Policies – Our Guarantee, Service Policy, Paint Notice, Return Goods Policy | | 22 |
| Hannay Reels Spec Worksheet | | 23 |

Top performance. Extreme conditions. Hannay Reels.

Safety and quick response time are critical when it comes to fighting fires. Our reels make payout and pickup quicker so you can work more efficiently and effectively when every second counts. That's why Hannay Reels is the #1 reel company specified by OEMs and professionals worldwide, based on product reliability, ease of use, and long life. When it comes to keeping your crew and your community safe, you can trust Hannay Reels.

Attention Truck Committees and Specifiers of Fire Apparatus

Products shown and described in this catalog are suggested models for broad use applications throughout the firefighting industry. All models can be assembled to dimensionally fit your unique applications and space requirements, and all our components are designed for multiple configurations.

For special orders, contact your Hannay dealer or call our Inside Sales Group.



Types of reels:

Booster Hose Reels – Quick first-attack for small fires or while larger volume hoses are being set up.

LD (Large Diameter) Reels – Reels for long lengths of 1-1/2" to 6" collapsible hose.

Dual Agent Reels – For firefighting with foam.

NEW Swing-Out Reels – For aircraft rescue firefighting applications.

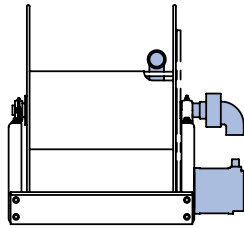
Mounting Hole Sizes

| | |
|---|--|
| Pressed Frame Reels and Channel Framed Reels | 7/16" wide x 7/8" long slot running left to right |
| Series 4000 Reels | 13/32" round holes |
| Series LD Reels | 5/8" round holes |

How to Specify **Hannay Reels**

Optional Location of Components

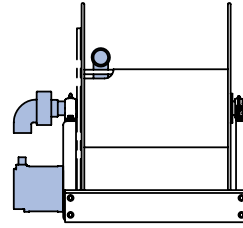
Location of the inlet, outlet riser, and rewind mechanism can be varied to meet your requirements and **must be specified on your order**. The drawings below show the component locations. Unless otherwise specified, most reels will be shipped as **Right Top Rewind** with the inlet, outlet riser, and rewind mechanism on the operator's right.



RT – Right Top Rewind

Reels have the inlet, outlet riser, and rewind mechanism on the operator's right. Hose unwinds from the top of the reel.

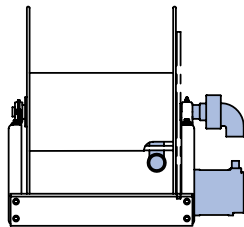
Standard – Always look at your reel from this position to determine right-hand or left-hand.



LT – Left Top Rewind

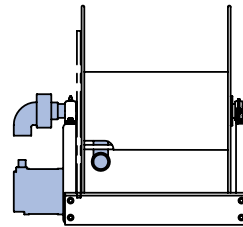
Reels have the inlet, outlet riser, and rewind mechanism on the operator's left. Hose unwinds from the top of the reel.

Standard for 1500, 1800, 2000 & 4000 Series reels.



RB – Right Bottom Rewind

Reels have the inlet, outlet riser, and rewind mechanism on the operator's right. Hose unwinds from the bottom of the reel.



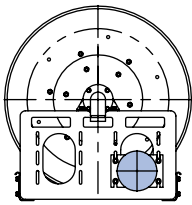
LB – Left Bottom Rewind

Reels have the inlet, outlet riser, and rewind mechanism on the operator's left. Hose unwinds from the bottom of the reel.

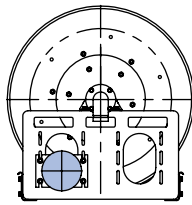
Note: Use component location initials as suffix after model number (ie; EF32-23-24 **RT**)

Optional Motor Locations

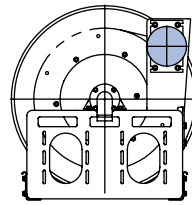
Electric rewind motors can be installed in any of the positions shown in these drawings. The Bottom Rear position is standard. The motor is installed inside the frame on Model ESF reels, which are designed for installation in restricted space.



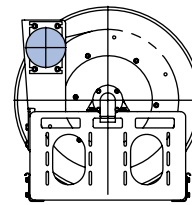
Bottom Rear (Standard)



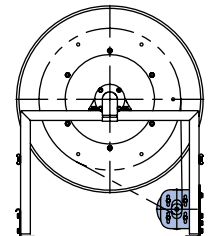
Bottom Front



Elevated 2 O'clock (REF Reels)



Elevated 10 O'clock (REF Reels)

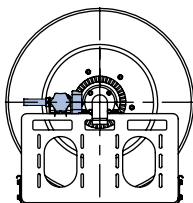


Inboard (ESF Reels)

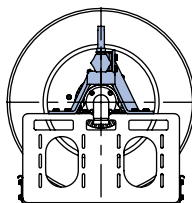
Optional Auxiliary Rewind Positions

Horizontal ring and pinion gear crank rewind mechanism is the standard configuration.

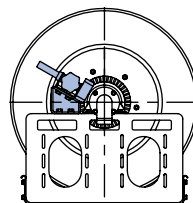
Optional positions include vertical and 30° above centerline, as shown in these drawings. Both are available at extra cost and **must be specified**.



Horizontal (Standard)



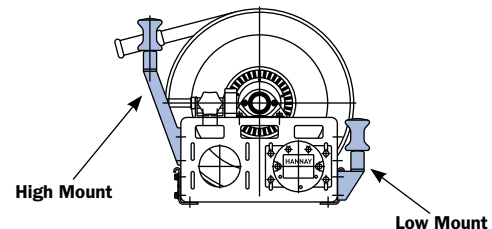
Vertical



30° Angle

Optional Roller Positions

Optional roller assembly mounting kits, up to 2 of either, can be mounted per reel. Consult factory, and indicate installation location – front or rear of reel.



Series F4000 | For Booster Hose

• Compact Reels

To handle single 3/4" or 1" I.D. hose.

- Choose direct crank rewind (removable) or chain and sprocket drive powered by electric, hydraulic or compressed air motor.
- Power rewind supplied with strap brake.
- Direct crank rewind supplied with cam-lock brake.
- Standard inlet: 90° ball bearing swivel joint, 1" female NPT threads.
- Standard outlet: 1" male NST threads (1.375" x 8 threads per inch).
- Consult factory for other sizes and/or threads.
- Standard inlet, outlet riser and hub assembly are steel (also available in stainless steel).
- Rollers and roller mounting brackets are accessory items. Specify roller position.
- Pressures to 1000 psi (69 bar).
- Temps from -25°F to +250°F (-32°C to +121°C).
- Consult factory for other pressures and temperatures.



Electric motor
Standard
configuration
shown

CAUTION: F4000/F4100 Series reels **not** recommended for use with Niedner hose. See page 20.

PARTS DRAWING – ISO 68



Optional External Mounting Brackets

Part No. 9906.0025.

Add 2-1/2" to the X dimensions shown in the chart.

| Model Number For power rewind see Note 5 | Hose Capacity of Reel feet m | | | Approx. Weight Crank Rewind lb. kg see Note 3 | | | Reel Dimensions*** In. mm | | | | | | |
|--|---------------------------------|--------------|--------------|--|---------------------------|---------------------|------------------------------|-----|------------|------------|------------|------------|------|
| | I.D. in. mm | 3/4 19 | 1 25 | NET | UPS/ FedEx SHIP WT. | Freight SHIP WT. | A | B | E CRANK | E POWER | F CRANK | F POWER | X |
| | O.D. in. mm | 1-9/32 33 | 1-9/16 40 | | | | | | | | | | |
| F4018-17-18 | | 50 | 35 | 36 | 80* | 71 | 15 | 10 | 16.5 | 19 | 27 | 20.5 | 13.5 |
| | | 15 | 11 | 16 | 36 | 32 | 381 | 254 | 419 | 483 | 686 | 521 | 343 |
| F4024-17-18 | | 100 | 50 | 46 | 83* | 81 | 21 | 16 | 16.5 | 19 | 32.62 | 27 | 19.5 |
| | | 30 | 15 | 21 | 38 | 37 | 533 | 406 | 419 | 483 | 829 | 686 | 495 |
| F4030-17-18 | | 150 | 75 | 57 | 110* | 92 | 27 | 22 | 16.5 | 19 | 39 | 32.5 | 25.5 |
| | | 46 | 23 | 26 | 50 | 42 | 686 | 559 | 419 | 483 | 991 | 826 | 648 |
| F4038-17-18 | | 200 | 100 | 70 | - | 125 | 35 | 30 | 16.5 | 19 | 46.62 | 41 | 33.5 |
| | | 61 | 30 | 32 | - | 57 | 889 | 762 | 419 | 483 | 1184 | 1041 | 851 |

Notes:

1. Specifications subject to change.
2. Upon request, reels can be supplied with drum lengths other than shown and with disc sizes in other diameters.
3. Weights shown in chart are for crank rewind models. ADD these amounts for power rewind models. (does not apply to FedEx or UPS):

| | Net lbs./kg | Ship lbs./kg |
|-----------|-------------|--------------|
| Electric | 18/8.2 | 18/8.2 |
| Hydraulic | 15/6.8 | 15/6.8 |
| Air | 15/6.8 | 15/6.8 |
4. Dimension "F" is the overall length of standard model reels. On crank rewind models, the dimension shown is with the crank in rewind position. Reels require 3-1/2" clearance to remove crank handle.

5. When ordering power rewind models, prefix model number with:
 - A = Air Rewind – supplied with control valve and 18" air hose.
 - E = Electric Rewind (1/3 HP) – 12v and 24v DC rewind reels supplied with switch and solenoid. 115v AC rewind reels are not supplied with switch, but can be ordered separately.
 - HD = Hydraulic Rewind – not supplied with control valve.

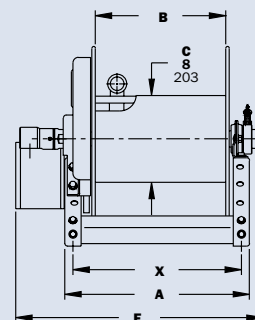
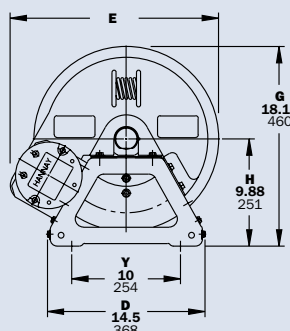
6. Be sure to check dimensions and weights prior to ordering.

7. Some roller options may prohibit the use of our molded chain guard.

NOTICE: A flexible connector must be used between the inlet pipe and the inlet swivel joint.

*Dimensional weight applies when shipped as a parcel package (via FedEx or UPS Ground).

*** X, Y indicate mounting holes.



Series F4100

To handle single 3/4" or 1" I.D. hose.

- Lightweight, compact reels designed for long lengths of hose in manual and power rewind.
- Gear-driven crank rewind handle is removable.
- Chain and sprocket drive powered by electric, hydraulic or compressed air motor.
- Gear-driven crank rewind, adjustable pinion brake.
- Standard inlet: 90° ball bearing swivel joint, 1" female NPT threads.
- Standard outlet: 1" male NST threads.
- Optional rollers: Specify roller position when ordering.
- Pressures to 1000 psi (69 bar).
- Temperatures from -25°F to +250°F (-32°C to +121°C).
- Consult factory for other pressures and temperatures.



Electric rewind with gear-driven crank rewind shown

CAUTION: F4000/F4100 Series reels **not** recommended for use with Niedner hose. See page 20.

PARTS DRAWING – ISO 216

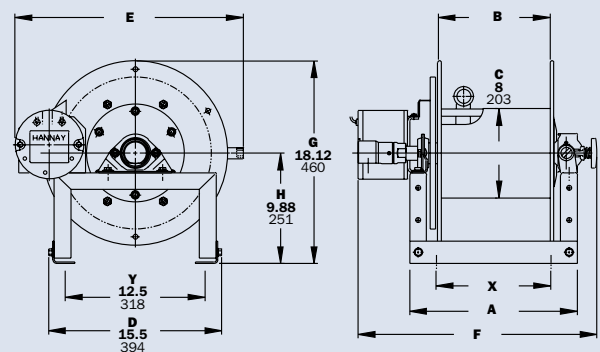
| Model Number For power rewind see Note 5 | Hose Capacity of Reel feet m | | | Approx. Weight Crank Rewind lb. kg see Note 3 | | Reel Dimensions*** in. mm | | | | | |
|---|---------------------------------|------------------|------------------|--|------------------|------------------------------|------------------|------------------|--------------------|---------------------|--------------------|
| | I.D. in. mm | 3/4 19 | 1 25 | NET | SHIP | A | B | E CRANK | E POWER | F | X |
| | O.D. in. mm | 1-9/32 33 | 1-9/16 40 | | | | | | | | |
| F4118-17-18 | | 50 15 | 35 11 | 62 28 | 97 44 | 15 381 | 10 254 | 18 457 | 20.5 521 | 21.5 546 | 7.5 190 |
| F4124-17-18 | | 100 30 | 50 15 | 72 33 | 107 49 | 21 533 | 16 406 | 18 457 | 20.5 521 | 27.5 699 | 13.5 343 |
| F4130-17-18 | | 150 46 | 75 23 | 83 38 | 118 54 | 27 686 | 22 559 | 18 457 | 20.5 521 | 33.5 851 | 19.5 495 |
| F4138-17-18 | | 200 61 | 100 30 | 96 44 | 131 59 | 35 889 | 30 762 | 18 457 | 20.5 521 | 41.5 1054 | 27.5 698 |

Notes:

1. Specifications subject to change.
2. Upon request, reels can be supplied with drum lengths other than shown.
3. Weights shown in chart are for crank rewind models. ADD these amounts for power rewind models:

| | Net lbs/kg | Ship lbs/kg |
|------------------|---------------|---------------|
| Electric | 18/8.2 | 18/8.2 |
| Hydraulic | 15/6.8 | 15/6.8 |
| Air | 15/6.8 | 15/6.8 |
4. Dimension "F" is the overall length of standard model reels.

5. When ordering power rewind models, prefix model number with:
 - A** = Air Rewind – supplied with control valve and 18" air hose.
 - E** = Electric Rewind (1/3 HP) – 12v and 24v DC rewind reels supplied with switch and solenoid. 115v AC rewind reels are not supplied with switch, but can be ordered separately.
 - HD** = Hydraulic Rewind – not supplied with control valve.
 6. **Be sure to check dimensions and weights prior to ordering.**
- NOTICE:** A flexible connector must be used between the inlet pipe and the inlet swivel joint.
- *** X, Y indicate mounting holes.



Series F | For Booster Hose

To handle 3/4" or 1" I.D. hose.

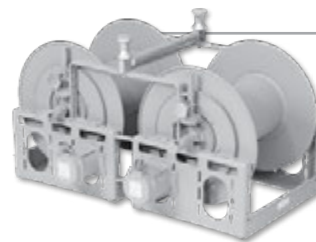
- Standard booster hose reel is steel, painted graphite. Aluminum or stainless steel construction is also available.
- “Super Booster” (aluminum construction) reel weighs up to 30% less than standard booster reel.
- Gear-driven crank rewind is standard. Choose chain and sprocket drive powered by electric, hydraulic or compressed air motor.
- Pinion brake standard.
- Standard inlet: 1" 90° ball bearing swivel joint with 1" female NPT threads.
- Standard outlet: 1" male NST threads. (1.375" x 8 threads per inch.)
- Consult factory for other sizes and/or threads.
- Standard inlet, outlet riser, and hub assembly are steel (also available in stainless steel).
- Rollers and roller mounting brackets are accessory items. Specify roller position.
- Pressures to 1000 psi (69 bar).
- Temperatures from -25°F to +250°F (-32°C to +121°C).
- Consult factory for reels to operate at other pressures and temperatures.

CAUTION: When using Niedner hose, a special riser and/or larger drum diameter is required.

See chart for capacity on page 20, or consult factory.



Shown with optional red finish and optional roller and spool assembly



Twin Fire Reel Conversion Kit is also available. Refer to page 10.

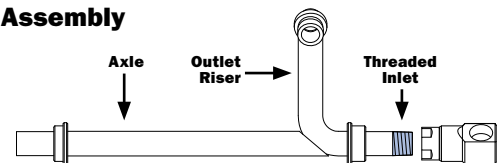
Hub Assembly Options

The hub assembly is the heart of the hose reel. It includes the outlet riser, the reel axle, and the threaded inlet to which the swivel joint is attached. The swivel joint permits the reel to rotate freely while connected to the fluid source.

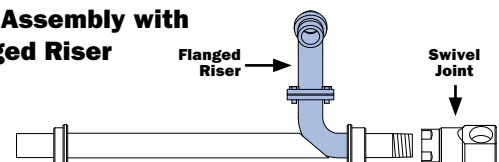
The outlet riser is engineered to conform to the contour of the drum so the hose lies smoothly against the drum without kinking. Smooth interior surfaces are flow-contoured for unrestricted flow and minimal pressure loss through the reel.

A 2-way flow hub assembly is available on certain models as an option. On this assembly, the reel axle is threaded on both ends so the swivel joint can be attached at either end to match piping. A pipe cap is supplied to seal the opposite end.

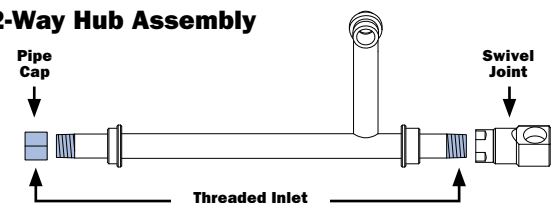
Standard Hub Assembly



Standard Hub Assembly with Optional Flanged Riser



Optional 2-Way Hub Assembly



PARTS DRAWING: SERIES F – ISO 84; SUPER BOOSTER – ISO 122

| Model Number <small>For power rewind see Note 5</small> | Hose Capacity of Reel feet m | | | Approx. Weight Crank Rewind lb. kg <small>see Note 4</small> | | | | Reel Dimensions*** In. mm | | | | | | | | | |
|--|---------------------------------|-------------------|------------------|---|------------------|-----------------|------------------|------------------------------|--------------------|--------------------|---------------------|----------------------|----------------------|---------------------|---------------------|--------------------|---------------------|
| | I.D. in. mm | 3/4 19 | 1 25 | STEEL | | ALUMINUM | | A | B | D | E | F CRANK | F POWER | G | H | X | Y |
| | O.D. in. mm | 1-9/32 33 | 1-9/16 40 | NET | SHIP | NET | SHIP | | | | | | | | | | |
| *F32-19-21 | | 175 53 | 85 26 | 102 46 | 144 65 | 80 36 | 122 55 | 29.5 749 | 24 610 | 20.5 521 | 21.62 549 | 34.25 870 | 34.38 873 | 21.5 546 | 12.12 308 | 21.5 546 | 16.75 425 |
| *F24-23-24 | | 150 46 | 100 30 | 92 42 | 134 61 | 75 34 | 117 53 | 21 533 | 15.5 394 | 20.5 521 | 23 584 | 25.75 654 | 25.88 657 | 23.5 597 | 12.12 308 | 13 330 | 16.75 425 |
| *F30-23-24 | | 225 68 | 150 46 | 105 48 | 147 67 | 82 37 | 124 56 | 27.5 699 | 22 559 | 20.5 521 | 23 584 | 32.25 819 | 32.38 822 | 23.5 597 | 12.12 308 | 19.5 495 | 16.75 425 |
| F38-23-24 | | 300 91 | 175 53 | 120 54 | 162 73 | 92 42 | 134 61 | 35 889 | 29.5 749 | 20.5 521 | 23 584 | 39.75 1010 | 41.75 1060 | 23.5 597 | 12.12 308 | 27 686 | 16.75 425 |
| F28-25-26 | | 275 84 | 175 53 | 113 51 | 155 70 | 87 39 | 129 59 | 25.5 648 | 20 508 | 25.5 648 | 24.75 629 | 30.25 768 | 32.25 819 | 27.88 708 | 15.5 394 | 17.5 445 | 21.75 552 |
| F34-25-26 | | 350 107 | 225 68 | 126 57 | 168 76 | 93 42 | 135 61 | 31.5 800 | 26 660 | 25.5 648 | 24.75 629 | 36.25 921 | 38.25 972 | 27.88 708 | 15.5 394 | 23.5 597 | 21.75 552 |
| *F16.5-30-31 | | 175 53 | 100 30 | 100 45 | 150 68 | 80 36 | 130 59 | 13.5 343 | 8 203 | 25.5 648 | 28.75 730 | 18.25 464 | 18.38 467 | 29.88 759 | 15.5 394 | 5.5 140 | 21.75 552 |
| *F20-30-31 | | 250 76 | 125 38 | 107 49 | 157 71 | 83 38 | 133 60 | 17 432 | 11.5 292 | 25.5 648 | 28.75 730 | 21.75 552 | 21.88 556 | 29.88 759 | 15.5 394 | 9 229 | 21.75 552 |
| F24-30-31 | | 350 107 | 175 53 | 113 51 | 163 74 | 87 39 | 137 62 | 21 533 | 15.5 394 | 25.5 648 | 28.75 730 | 25.75 654 | 27.75 705 | 29.88 759 | 15.5 394 | 13 330 | 21.75 552 |
| F28-30-31 | - | - | 250 76 | 121 55 | 171 78 | 90 41 | 140 64 | 25.5 648 | 20 508 | 25.5 648 | 28.75 730 | 30.25 768 | 32.25 819 | 29.88 759 | 15.5 394 | 17.5 445 | 21.75 552 |
| F30-30-31 | - | - | 275 84 | 125 57 | 175 79 | 92 42 | 142 64 | 27.5 699 | 22 559 | 25.5 648 | 28.75 730 | 32.25 819 | 34.25 870 | 29.88 759 | 15.5 394 | 19.5 495 | 21.75 552 |
| F34-30-31 | - | - | 300 91 | 134 61 | 184 83 | 97 44 | 147 67 | 31.5 800 | 26 660 | 25.5 648 | 28.75 730 | 36.25 921 | 38.25 972 | 29.88 759 | 15.5 394 | 23.5 597 | 21.75 552 |
| F20-33-34 | | 300 91 | 175 53 | 107 49 | 157 71 | 83 38 | 133 60 | 16.5 419 | 11.5 292 | 31.5 800 | 31.75 806 | 21.12 536 | 23.25 591 | 33.62 854 | 17.75 451 | 9 229 | 27.75 705 |

Notes:

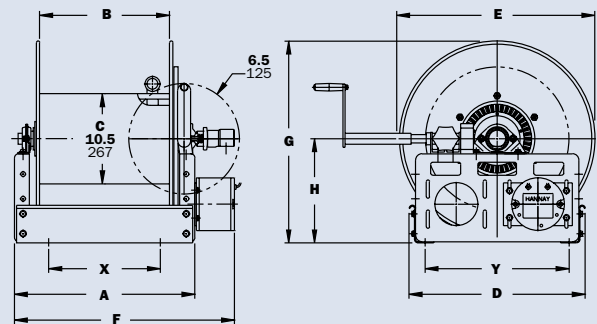
- Specifications subject to change.
- A 2-way flow hub is available at no extra cost and must be specified. Assembly is threaded on both ends so swivel joint can be attached at either end of the reel. A pipe cap seals the opposite end. (See Ordering & Accessory Guide.)
- Upon request, reels can be supplied with drum lengths other than shown and with disc sizes in other diameters.
- Weights shown in chart are for crank rewind models. ADD these amounts for power rewind models:

| | Net lbs/kg | Ship lbs/kg |
|------------------|------------|-------------|
| Electric | 40/18.1 | 40/18.1 |
| Hydraulic | 20/9.1 | 20/9.1 |
| Air | 20/9.1 | 20/9.1 |
- When ordering power rewind models, prefix model number with:
 - A** = Air Rewind – supplied with control valve and 18" air hose.
 - E** = Electric Rewind (1/3 HP)
 - EP** = Electric Rewind (1/2 HP) – 12v and 24v DC rewind reels supplied with switch and solenoid. 115v AC rewind reels are not supplied with switch, but can be ordered separately.
 - HD** = Hydraulic Rewind – not supplied with control valve.
- For polished aluminum reels, prefix complete model number with "SB" (for example: SBEF 32-19-21).
- When installing FH-3 rollers, add 4-1/2" to the "D" dimension.
- Be sure to check dimensions and weights prior to ordering.**

NOTICE: A flexible connector must be used between the inlet pipe and the inlet swivel joint.

*The "F" dimension for these models is shown for 1/3 HP motors. Add 2" to "F" dimension for 1/2 HP motors. The "F" dimension for all other reels is shown for 1/2 HP. Reels handling 200' or more must use 1/2 HP motor. (Use prefix EP when ordering.)

*** X, Y indicate mounting holes.



Series SF | For Booster Hose

• Inboard Mounted Motor

To handle 3/4" or 1" I.D. hose.

- Inboard motor location high profile.
- Standard booster hose reel is steel, painted graphite. Aluminum or stainless steel construction is also available.
- "Super Booster" (aluminum construction) reel weighs up to 30% less than standard booster reel.
- Gear-driven crank rewind is standard. Choose chain and sprocket drive powered by electric, hydraulic or compressed air motor.
- Pinion brake standard.
- Standard inlet: 1" 90° ball bearing swivel joint with 1" female NPT threads.
- Standard outlet: 1" male NST threads (1.375" x 8 threads per inch).
- Consult factory for other sizes and/or threads.
- Standard inlet, outlet riser, and hub assembly are steel (also available in stainless steel).
- Rollers and roller mounting brackets are accessory items. Specify roller position.
- Pressures to 1000 psi (69 bar).
- Temperatures from -25°F to +250°F (-32°C to +121°C).
- Consult factory for other pressures and temperatures.

CAUTION: When using Niedner hose, a special riser and/or larger drum diameter is required.

See chart for capacity on page 20, or consult factory.



Standard configuration shown

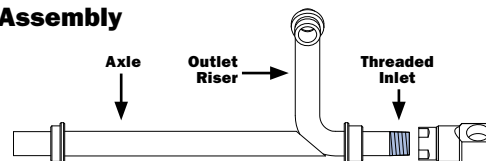
Hub Assembly Options

The hub assembly is the heart of the hose reel. It includes the outlet riser, the reel axle, and the threaded inlet to which the swivel joint is attached. The swivel joint permits the reel to rotate freely while connected to the fluid source.

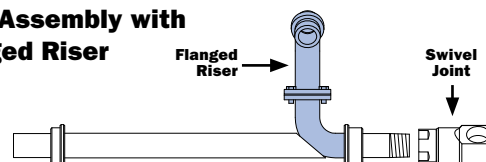
The outlet riser is engineered to conform to the contour of the drum so the hose lies smoothly against the drum without kinking. Smooth interior surfaces are flow-contoured for unrestricted flow and minimal pressure loss through the reel.

A 2-way flow hub assembly is available on certain models as an option. On this assembly, the reel axle is threaded on both ends so the swivel joint can be attached at either end to match piping. A pipe cap is supplied to seal the opposite end.

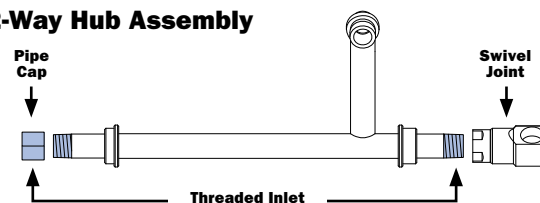
Standard Hub Assembly



Standard Hub Assembly with Optional Flanged Riser



Optional 2-Way Hub Assembly



PARTS DRAWING – ISO 220

| Model Number For power rewind see Note 5 | Hose Capacity of Reel feet m | | | Approx. Weight Crank Rewind lb. kg see Note 4 | | | | Reel Dimensions*** in. mm | | | | | | | | |
|--|---------------------------------|------------|------------|--|-----------|------------|-------------|------------------------------|-------------|--------------|--------------|--------------|--------------|-------------|--------------|---|
| | I.D. in. mm | 3/4 19 | 1 25 | STEEL | | ALUMINUM | | A | B | D | E | F | G | H | X | Y |
| | | | | NET | SHIP | NET | SHIP | | | | | | | | | |
| SF32-19-21 | 175 | 85 | 102 | 144 | 80 | 122 | 29 | 24 | 20.5 | 21.62 | 34 | 25.12 | 15.75 | 21.5 | 16.75 | |
| | 53 | 26 | 46 | 65 | 36 | 55 | 737 | 610 | 521 | 549 | 864 | 638 | 400 | 546 | 425 | |
| SF24-23-24 | 150 | 100 | 92 | 134 | 75 | 117 | 20.5 | 15.5 | 23.5 | 23 | 25.5 | 29.25 | 17.88 | 13 | 19.75 | |
| | 46 | 30 | 42 | 61 | 34 | 53 | 521 | 394 | 597 | 584 | 648 | 743 | 454 | 330 | 502 | |
| SF30-23-24 | 225 | 150 | 105 | 147 | 82 | 124 | 27 | 22 | 23.5 | 23 | 32 | 29.25 | 17.88 | 19.5 | 19.75 | |
| | 68 | 46 | 48 | 67 | 37 | 56 | 686 | 559 | 597 | 584 | 813 | 743 | 454 | 495 | 502 | |
| *SF28-25-26 | 275 | 175 | 113 | 155 | 87 | 129 | 25 | 20 | 25.5 | 24.75 | 30 | 30.88 | 18.5 | 17.5 | 21.75 | |
| | 84 | 53 | 51 | 70 | 39 | 59 | 635 | 508 | 648 | 629 | 762 | 784 | 470 | 445 | 552 | |
| *SF34-25-26 | 350 | 225 | 126 | 168 | 93 | 135 | 31 | 26 | 25.5 | 24.75 | 36 | 30.88 | 18.5 | 23.5 | 21.75 | |
| | 107 | 68 | 57 | 76 | 42 | 61 | 787 | 660 | 648 | 629 | 914 | 784 | 470 | 597 | 552 | |
| SF16.5-30-31 | 175 | 100 | 100 | 150 | 80 | 130 | 13 | 8 | 29 | 28.75 | 18 | 35.62 | 21.25 | 5.5 | 25.25 | |
| | 53 | 30 | 45 | 68 | 36 | 59 | 330 | 203 | 737 | 730 | 457 | 905 | 540 | 140 | 641 | |
| SF20-30-31 | 250 | 125 | 107 | 157 | 83 | 133 | 16.5 | 11.5 | 29 | 28.75 | 21.5 | 35.62 | 21.25 | 9 | 25.25 | |
| | 76 | 38 | 49 | 71 | 38 | 60 | 419 | 292 | 737 | 730 | 546 | 905 | 540 | 229 | 641 | |
| *SF24-30-31 | 350 | 175 | 113 | 163 | 87 | 137 | 20.5 | 15.5 | 29 | 28.75 | 25.5 | 35.62 | 21.25 | 13 | 25.25 | |
| | 107 | 53 | 51 | 74 | 39 | 62 | 521 | 394 | 737 | 730 | 648 | 905 | 540 | 330 | 641 | |
| *SF28-30-31 | – | 250 | 121 | 171 | 90 | 140 | 25 | 20 | 29 | 28.75 | 30 | 35.62 | 21.25 | 17.5 | 25.25 | |
| | – | 76 | 55 | 78 | 41 | 64 | 635 | 508 | 737 | 730 | 762 | 905 | 540 | 445 | 641 | |
| *SF30-30-31 | – | 275 | 125 | 175 | 92 | 142 | 27 | 22 | 29 | 28.75 | 32 | 35.62 | 21.25 | 19.5 | 25.25 | |
| | – | 84 | 57 | 79 | 42 | 64 | 686 | 559 | 737 | 730 | 813 | 905 | 540 | 495 | 641 | |
| *SF34-30-31 | – | 300 | 134 | 184 | 97 | 147 | 31 | 26 | 29 | 28.75 | 36 | 35.62 | 21.25 | 23.5 | 25.25 | |
| | – | 91 | 61 | 83 | 44 | 67 | 787 | 660 | 737 | 730 | 914 | 905 | 540 | 597 | 641 | |
| *SF20-33-34 | 300 | 175 | 117 | 167 | 90 | 140 | 16.5 | 11.5 | 31.5 | 31.75 | 21.12 | 38.12 | 22.25 | 9 | 27.88 | |
| | 91 | 53 | 53 | 76 | 41 | 64 | 419 | 292 | 800 | 806 | 536 | 968 | 565 | 229 | 708 | |

Notes:

- Specifications subject to change.
- A 2-way flow hub is available at no extra cost and must be specified. Assembly is threaded on both ends so swivel joint can be attached at either end of the reel. A pipe cap seals the opposite end. (See Ordering & Accessory Guide.)
- Upon request, reels can be supplied with drum lengths other than shown and with disc sizes in other diameters.
- Weights shown in chart are for crank rewind models. ADD these amounts for power rewind models (does not apply to FedEx or UPS):

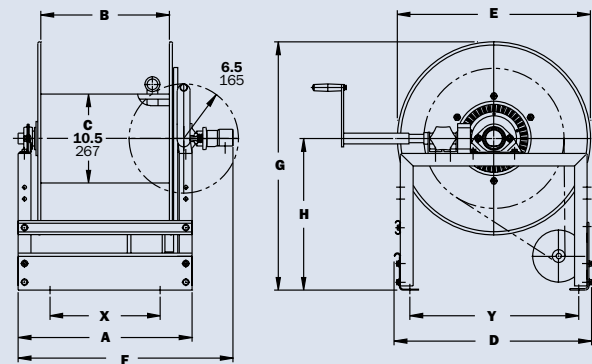
| | Net lbs/kg | Ship lbs/kg |
|------------------|----------------|----------------|
| Electric | 40/18.1 | 40/18.1 |
| Hydraulic | 20/9.1 | 20/9.1 |
| Air | 20/9.1 | 20/9.1 |
- When ordering power rewind models, prefix model number with:
 - A** = Air Rewind – supplied with control valve and 18" air hose.
 - E** = Electric Rewind (1/3 HP)
 - EP** = Electric Rewind (1/2 HP) – 12v and 24v DC rewind reels supplied with switch and solenoid. 115v AC rewind reels are not supplied with switch, but can be ordered separately.
 - HD** = Hydraulic Rewind – not supplied with control valve.
- For polished aluminum reels, prefix complete model number with "SB" (for example: SBESF32-19-21).
- All frames are rollformed channel, except Super Booster, which is square tubing.

8. Be sure to check dimensions and weights prior to ordering.

NOTICE: A flexible connector must be used between the inlet pipe and the inlet swivel joint.

* Reels handling 200' or more of 1" must use 1/2 HP motor.

*** X, Y indicate mounting holes.



Series FF

• Large Diameter Booster Hose • Preconnected Collapsible Hose

To handle 1-1/4" or 1-1/2" I.D. booster hose or 1-1/2" or 1-3/4" I.D. collapsible hose.

- Standard booster hose reel is steel, painted graphite. Aluminum or stainless steel construction is also available.
- "Super Booster" (aluminum construction) reel weighs up to 30% less than standard booster reel.
- Gear-driven crank rewind is standard. Choose chain and sprocket drive powered by electric, hydraulic or compressed air motor.
- Pinion brake standard.
- Standard inlet: 1-1/2" 90° ball bearing swivel joint with 1-1/2" female NPT threads and 2" Victaulic groove.
- Flanged outlet riser.
- Standard outlet: 1-1/2" male NST threads. (1.990" x 9 threads per inch.)
- Consult factory for other sizes and/or threads.
- Standard inlet, outlet riser, and hub assembly are steel (also available in stainless steel).
- Rollers and roller mounting brackets are accessory items. Specify roller position.
- Pressures to 600 psi (41 bar).
- Temperatures from -25°F to +175°F (-32°C to +79°C).
- Consult factory for other pressures and temperatures.



Shown with optional polished aluminum construction

CAUTION: When using Niedner hose, a special riser and/or larger drum diameter is required.

See chart for capacity on page 20, or consult factory.

Optional

Twin Fire Reel Conversion Kit | For Booster Hose

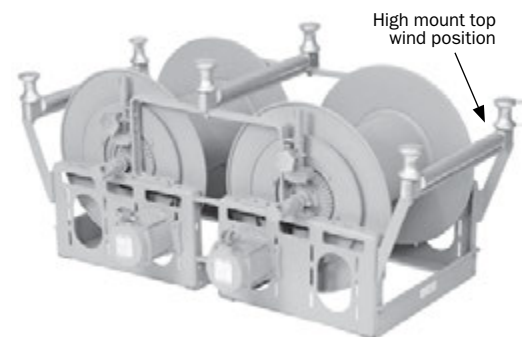
For Series F and FF.

Twin booster hose reels combine matched F or FF Series reels in a single unit with a center-mounted roller and spool assembly. Hose from both reels can be used on either side of the truck. Rugged unit frame construction maintains alignment and simplifies installation when two reels are combined.

Consult dealer or factory for more information.



Two F Series reels, and a standard Twin Fire Reel Conversion Kit. Shown assembled.



Two F Series reels, a Twin Fire Reel Conversion Kit, and two optional outrigger roller assemblies. Shown assembled.

Series FF

• Large Diameter Booster Hose • Preconnected Collapsible Hose

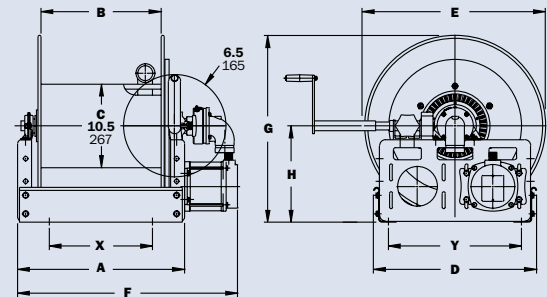
PARTS DRAWING – ISO 18, OR ISO 41

| Model Number | Hose Capacity of Reel feet m | | | | | Approx. Weight Crank Rewind lb. kg see Note 4 | | | | Reel Dimensions*** in. mm | | | | | | | | |
|--------------|---------------------------------|---------------|--------------|--------------------|------------------------|--|------|----------|------|------------------------------|------|-------|-------|-------|-------|------|-------|---|
| | Round Hose | | | Collapsible Hose | | STEEL | | ALUMINUM | | A | B | D | E | F | G | H | X | Y |
| | I.D. in. mm | 1-1/4 32 | 1-1/2 38 | 1-1/2 38 | 1-3/4 44 | NET | SHIP | NET | SHIP | | | | | | | | | |
| | O.D. in. mm | 1-13/16 46 | 2-1/16 52 | 3/4 x 3 19 x 76 | 7/8 x 3-1/4 22 x 83 | | | | | | | | | | | | | |
| FF28-23-24 | 100 | 50 | 150 | 125 | 111 | 153 | 80 | 122 | 25.5 | 20 | 20.5 | 23 | 32.25 | 23.5 | 12.12 | 17.5 | 16.75 | |
| | 30 | 15 | 46 | 38 | 50 | 69 | 36 | 55 | 648 | 508 | 521 | 584 | 819 | 579 | 308 | 445 | 425 | |
| FF28-25-26 | 100 | 100 | 200 | 175 | 123 | 165 | 90 | 132 | 25.5 | 20 | 25.5 | 24.75 | 32.25 | 27.88 | 15.5 | 17.5 | 21.75 | |
| | 30 | 30 | 61 | 53 | 56 | 75 | 41 | 60 | 648 | 508 | 648 | 629 | 819 | 708 | 394 | 445 | 552 | |
| FF16-30-31 | 75 | 50 | 100 | 75 | 110 | 160 | 83 | 133 | 13 | 7.5 | 25.5 | 28.75 | 19.75 | 29.88 | 15.5 | 7.75 | 21.75 | |
| | 23 | 15 | 30 | 23 | 50 | 73 | 38 | 60 | 330 | 191 | 648 | 730 | 502 | 759 | 394 | 197 | 552 | |
| FF18-30-31 | 100 | 75 | 150 | 75 | 114 | 164 | 85 | 135 | 15 | 9.5 | 25.5 | 28.75 | 21.75 | 29.88 | 15.5 | 7 | 21.75 | |
| | 30 | 23 | 46 | 23 | 52 | 74 | 39 | 61 | 381 | 241 | 648 | 730 | 552 | 759 | 394 | 178 | 552 | |
| FF28-30-31 | 250 | 150 | 300 | 250 | 131 | 181 | 93 | 143 | 25.5 | 20 | 25.5 | 28.75 | 32.25 | 29.88 | 15.5 | 17.5 | 21.75 | |
| | 76 | 46 | 91 | 76 | 59 | 82 | 42 | 65 | 648 | 508 | 648 | 730 | 819 | 759 | 394 | 445 | 552 | |
| FF20-33-34 | 125 | 100 | 200 | 150 | 120 | 174 | 88 | 142 | 16.5 | 11.5 | 31.5 | 31.75 | 23.25 | 33.62 | 17.75 | 9 | 27.75 | |
| | 38 | 30 | 61 | 46 | 54 | 79 | 40 | 64 | 419 | 292 | 800 | 806 | 591 | 854 | 451 | 229 | 705 | |
| FF22-33-34 | 150 | 150 | 250 | 200 | 125 | 179 | 91 | 145 | 18.5 | 13.5 | 31.5 | 31.75 | 25.25 | 33.62 | 17.75 | 11 | 27.75 | |
| | 46 | 46 | 76 | 61 | 57 | 81 | 41 | 66 | 470 | 343 | 800 | 806 | 641 | 854 | 451 | 279 | 705 | |

Notes:

- Specifications subject to change.
 - Dimensions up to and including 30-31 disc size reflect pressed frames. All others are rollformed channel frames, except Super Booster, which is square tubing.
 - Upon request, reels can be supplied with drum lengths other than shown and with disc sizes in other diameters.
 - Weights shown in chart are for crank rewind models. ADD these amounts for power rewind models.

| | Net lbs/kg | Ship lbs/kg |
|-----------|------------|-------------|
| Electric | 40/18.1 | 40/18.1 |
| Hydraulic | 20/9.1 | 20/9.1 |
| Air | 20/9.1 | 20/9.1 |
 - When ordering power rewind models, prefix model number with:
 - A** = Air Rewind – supplied with control valve and 18" air hose.
 - EP** = Electric Rewind (1/2 HP) – 12v and 24v DC rewind reels supplied with switch and solenoid. 115v AC rewind reels are not supplied with switch, but can be ordered separately.
 - HD** = Hydraulic Rewind – not supplied with control valve.
 - For polished aluminum reels, prefix complete model number with "SB" (for example: SBEPFF28-23-24).
 - Be sure to check dimensions and weights prior to ordering.**
- NOTICE:** A flexible connector must be used between the inlet pipe and the inlet swivel joint.
*** X, Y indicate mounting holes.



Series **F7100/FF7200** | Dual Hose

• Dual Agent Applications

To handle dual 3/4" through 1-1/2" I.D. hose.

- Two swivel joint inlets and two outlet risers.
- All models are available with optional aluminum or stainless steel construction.
- Gear-driven crank rewind is standard. Choose chain and sprocket drive powered by electric, hydraulic or compressed air motor.
- Pinion brake standard.
- Standard inlet, outlet riser, and hub assembly are steel (also available in stainless steel).
- Rollers and roller mounting brackets are accessory items. Specify roller position.

Series **F7100**

- Standard inlets: 1" 90° ball bearing swivel joint, 1" female NPT threads.
- Standard outlets: 1" male NST threads (1.375" x 8 threads per inch).
- Pressures to 1000 psi (69 bar).
- Temperatures from -25°F to +250°F (-32°C to +121°C).

Series **FF7200**

- Standard inlets: 1-1/2" 90° ball bearing swivel joint, 1-1/2" female NPT threads and 2" Victaulic groove.
- Standard outlets: 1-1/2" male NST threads (1.990" x 9 threads per inch).
- Pressures to 600 psi (41 bar).
- Temperatures from -25°F to +175°F (-32°C to +79°C).

Both Series

- Consult factory for other sizes and/or threads.
- Consult factory for other pressures and temperatures.

CAUTION: When using Niedher hose, a special riser and/or larger drum diameter is required (consult factory). See page 20.



F7100 Series shown
Standard configuration



F7100 Series shown
with optional roller and spool
assembly high mount

Dual Hose | Series **F7100/FF7200**

• Dual Agent Applications

PARTS DRAWING—F7100 – ISO 72; FF7200 – ISO 74

| Model Number | Hose Capacity of Reel feet m | | | | Approx. Weight Crank Rewind lb. kg see Note 3 | | Reel Dimensions*** in. mm | | | | | | | | | |
|---------------------|---------------------------------|----------------------|----------------------|----------------------|--|------------------|------------------------------|------------------|--------------------|---------------------|---------------------|----------------------|---------------------|---------------------|--------------------|---------------------|
| | I.D. in. mm | 3/4 19 | 1 25 | 1-1/2 38 | NET | SHIP | A | B | D | E | F CRANK | F POWER | G | H | X | Y |
| | O.D. in. mm | 1-9/32 33 | 1-9/16 40 | 2-1/16 52 | | | | | | | | | | | | |
| F7128-23-24 | | 2/100 2/31 | 2/50 2/15 | – | 109 49 | 151 68 | 25.5 648 | 20 508 | 20.5 521 | 23 584 | 35 889 | 37 940 | 23.5 597 | 12.12 308 | 17.5 445 | 16.75 425 |
| F7130-25-26 | | 2/150 2/46 | 2/100 2/31 | – | 125 57 | 175 79 | 27.5 699 | 22 559 | 25.5 648 | 24.75 629 | 37 940 | 39 991 | 27.88 708 | 15.5 394 | 19.5 495 | 21.75 552 |
| F7128-30-31 | | 2/200 2/61 | 2/125 2/38 | – | 129 59 | 179 81 | 25.5 648 | 20 508 | 25.5 648 | 28.75 730 | 35 889 | 37 940 | 29.88 759 | 15.5 394 | 17.5 445 | 21.75 552 |
| F7128-33-34 | | 2/250 2/76 | 2/150 2/46 | – | 129 59 | 179 81 | 25 635 | 20 508 | 31.5 800 | 31.75 806 | 34.5 876 | 36.5 927 | 33.62 854 | 17.75 451 | 17.5 445 | 27.75 705 |
| FF7230-25-26 | – | – | – | 2/50 2/15 | 144 65 | 194 88 | 27.5 699 | 22 559 | 25.5 648 | 24.75 629 | 40.5 1029 | 40.75 1035 | 27.88 708 | 15.5 394 | 19.5 495 | 21.75 552 |
| FF7228-30-31 | – | – | – | 2/50 2/15 | 148 67 | 198 90 | 25.5 648 | 20 508 | 25.5 648 | 28.75 730 | 38.5 978 | 38.75 984 | 29.88 759 | 15.5 394 | 17.5 445 | 21.75 552 |
| FF7230-33-34 | – | – | – | 2/100 2/31 | 160 73 | 210 95 | 27 686 | 22 559 | 31.5 800 | 31.75 806 | 40.5 1029 | 40.5 1029 | 33.62 854 | 17.75 451 | 19 483 | 27.75 705 |

Notes:

- Specifications subject to change.
- Upon request, reels can be supplied with drum lengths other than shown and with disc sizes in other diameters.
- Weights shown in chart are for crank rewind models. ADD these amounts for power rewind models:

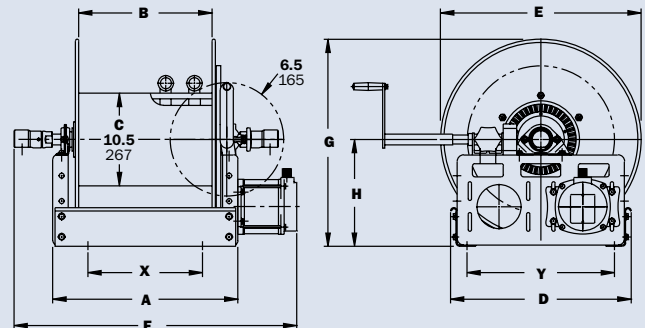
| | Net lbs/kg | Ship lbs/kg |
|------------------|----------------|----------------|
| Electric | 40/18.1 | 40/18.1 |
| Hydraulic | 20/9.1 | 20/9.1 |
| Air | 20/9.1 | 20/9.1 |

- When ordering power rewind models, prefix model number with:
 - A** = Air Rewind – supplied with control valve and 18" air hose.
 - EP** = Electric Rewind (1/2 HP) – 12v and 24v DC rewind reels supplied with switch and solenoid. 115v AC rewind reels are not supplied with switch, but can be ordered separately.
 - HD** = Hydraulic Rewind – not supplied with control valve.

- For polished aluminum reels, prefix complete model number with "SB" (for example: SBEPF 7128-23-24).
- Be sure to check dimensions and weights prior to ordering.**

NOTICE: A flexible connector must be used between the inlet pipe and the inlet swivel joint.

*** X, Y indicate mounting holes.



Swing-Out Reel | Booster Hose

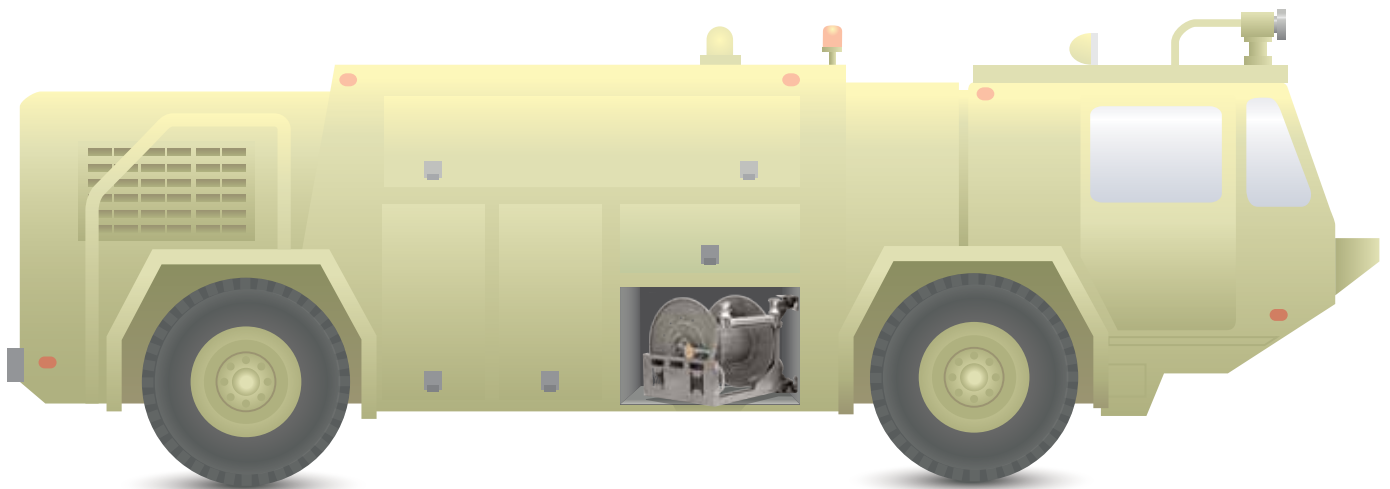
For Single or Dual Agent 1" through 1-1/2" I.D. hose.

Hose reels used primarily in ARFF firefighting applications. These reels mount inside truck cabinets and are designed to swing out for ease of operation and accessibility. Equipped with 2 pin locks to lock reel in stored position as well as 90° to cabinet for forward deployment of hose line.

- 12v or 24v DC explosion-proof motor.
- Heavy-duty square tubing frame.
- Auxiliary bevel gear crank rewind with pinion brake.
- Inlet 90° FxF swivel joint.
- Outlet MNST is standard (other threads available).
- Swing-out frame includes bearings and brackets for swing mount.
- Rollers available as an option.
- Grab handle is standard.
- Optional pivot release knob with multi-position lock replaces 2 manual pin locks.
- Pressures to 1000 psi (69 bar).
- Other custom sizes and configurations available depending on cabinet size.
- Right-hand version for passenger side compartment. Left-hand version for driver side compartment.
- Also usable in stored position.

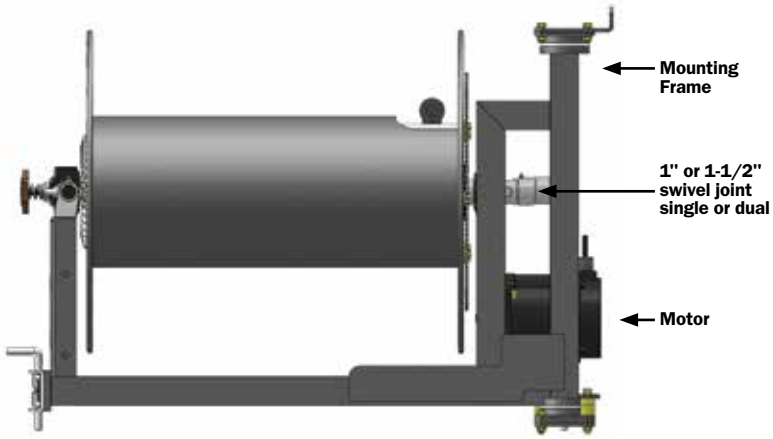


Shown with optional rollers

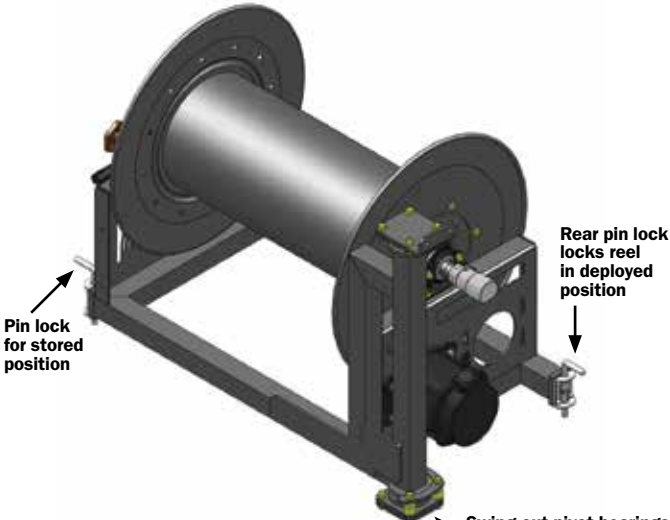


Booster
Hose

Swing-Out Reel

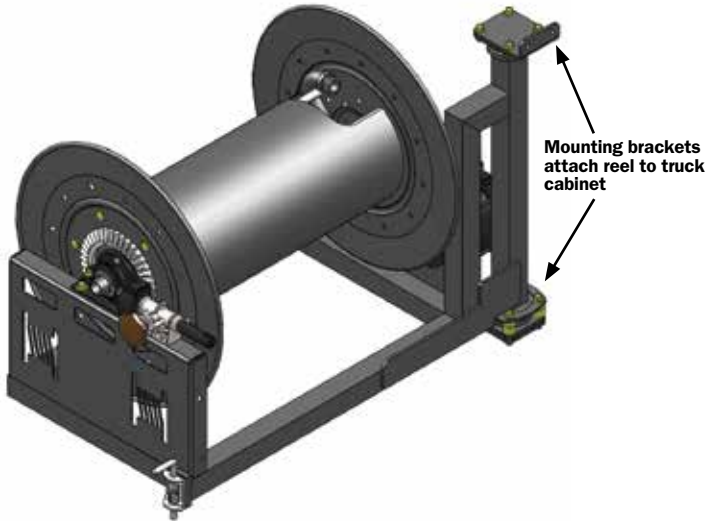


Front view in truck (stored)

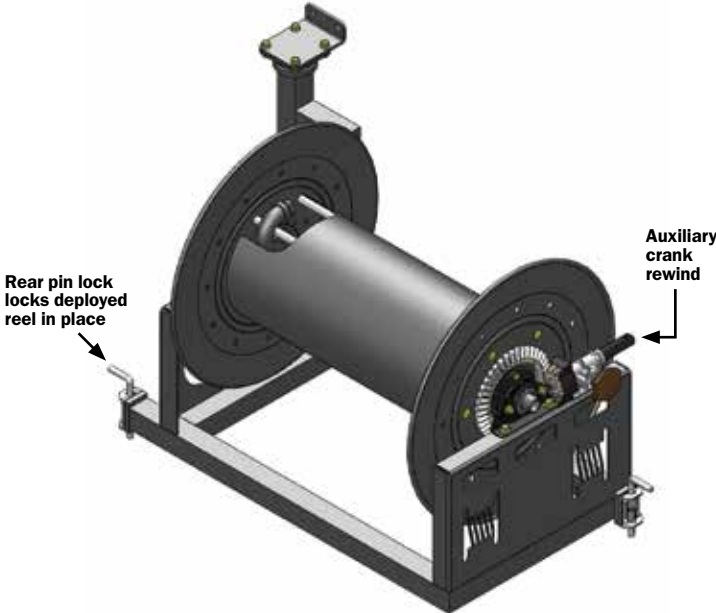


Side view in truck

Swing-out pivot bearings (at top and bottom) and mounting frame. Includes built-in stop to prevent over 90° rotation/deployment



Front view - deployed



Rear view - deployed

Series **F3100/FF3600**

• Industrial Fire Protection

To handle 3/4" through 1-1/2" I.D. booster hose or 1" through 1-3/4" I.D. collapsible hose.

- The reel can be installed on the floor or wall.
- Steel construction is standard. Aluminum or stainless steel construction is available.
- Choose disc rewind or removable direct crank rewind.
- Supplied with spring actuated pin lock.
- Standard inlet, outlet riser, and hub assembly are steel (also available in stainless steel).
- Rollers and roller mounting brackets are accessory items. Specify roller position.

Series **F3100**

- Standard inlet: 1" 90° ball bearing swivel joint with 1" female NPT threads.
- Standard outlet: 1" male NST threads (1.375" x 8 threads per inch).
- Pressures to 1000 psi (69 bar).
- Temperatures from -25°F to +225°F (-32°C to +121°C).

Series **FF3600**

- Standard inlet: 1-1/2" 90° ball bearing swivel joint with 1-1/2" female NPT threads and 2" Victaulic groove.
- Standard outlet: 1-1/2" male NST threads (1.990" x 9 threads per inch).
- Pressures to 600 psi (41 bar).
- Temperatures from -25°F to +175°F (-32°C to +79°C).

Both Series

- Consult factory for other sizes and/or threads.
- Consult factory for other pressures and temperatures.
- Removable crank rewind is standard.
- For hand over hand rewind option (less crank), consult factory.

CAUTION: When using Niedner hose, a special riser and/or larger drum diameter is required (consult factory). See page 20.



F3100 Series shown
Standard configuration



FF3600 Series shown
Standard configuration

Series F3100/FF3600

• Industrial Fire Protection

PARTS DRAWING – F3100 – ISO 113; FF3600 – ISO 111

| Model Number | Hose Capacity of Reel feet m | | | | Approx. Weight Crank Rewind lb. kg | | Reel Dimensions*** in. mm | | | | | | | |
|--------------------|---------------------------------|------------------|-------------------|------------------------|--|--------------------|------------------------------|--------------------|---------------------|---------------------|---------------------|--------------------|--------------------|---|
| | Round Hose | | Collapsible Hose | | NET | SHIP | A | B | D | E | F | G | H | X |
| | I.D. in. mm | 3/4 19 | 1 25 | 1 26 | | | | | | | | | | |
| | O.D. in. mm | 1-9/32 33 | 1-9/16 40 | 1/2 x 1-3/4 13 x 44 | | | | | | | | | | |
| F3116-25-26 | 100 30 | 50 15 | 200 61 | 85 39 | 120 54 | 13 330 | 7.5 191 | 25.5 648 | 24.75 629 | 24.75 629 | 27.88 708 | 15.5 394 | 7.75 197 | |
| F3120-25-26 | 150 46 | 100 30 | 350 107 | 94 43 | 129 59 | 17 432 | 11.5 292 | 25.5 648 | 24.75 629 | 28.75 730 | 27.88 708 | 15.5 394 | 9 229 | |
| F3124-25-26 | 250 76 | 150 46 | 450 137 | 103 47 | 138 63 | 21 533 | 15.5 394 | 25.5 648 | 24.75 629 | 32.75 832 | 27.88 708 | 15.5 394 | 13 330 | |
| F3128-25-26 | 300 91 | 200 61 | 650 198 | 113 51 | 155 70 | 25.5 648 | 20 508 | 25.5 648 | 24.75 629 | 32.75 832 | 27.88 708 | 15.5 394 | 17.5 445 | |
| F3124-30-31 | 300 91 | 200 61 | – | 103 47 | 133 60 | 21 533 | 15.5 394 | 25.5 648 | 28.75 730 | 32.75 832 | 29.88 759 | 15.5 394 | 13 330 | |
| F3130-30-31 | 450 137 | 300 91 | – | 113 51 | 143 65 | 27.5 699 | 22 559 | 25.5 648 | 28.75 730 | 39.25 997 | 29.88 759 | 15.5 394 | 19.5 495 | |

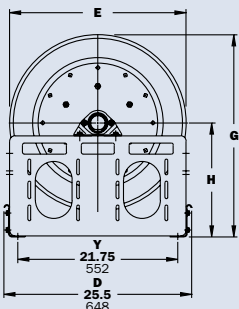
| Model Number | Hose Capacity of Reel feet m | | | | | Approx. Weight Crank Rewind lb. kg | | Reel Dimensions*** in. mm | | | | | | | |
|---------------------|---------------------------------|------------------|-------------------|--------------------|------------------------|--|--------------------|------------------------------|--------------------|---------------------|---------------------|---------------------|--------------------|--------------------|---|
| | Round Hose | | Collapsible Hose | | | NET | SHIP | A | B | D | E | F | G | H | X |
| | I.D. in. mm | 1 25 | 1-1/2 38 | 1-1/2 38 | 1-3/4 44 | | | | | | | | | | |
| | O.D. in. mm | 1-9/16 40 | 2-1/16 52 | 3/4 x 3 19 x 76 | 7/8 x 3-1/4 22 x 83 | | | | | | | | | | |
| FF3616-25-26 | 50 15 | – | 50 15 | 50 15 | 95 43 | 130 59 | 13 330 | 7.5 191 | 25.5 648 | 24.75 629 | 26 660 | 27.88 708 | 15.5 394 | 7.75 197 | |
| FF3620-25-26 | 100 30 | 50 15 | 100 30 | 75 23 | 104 47 | 139 63 | 17 432 | 11.5 292 | 25.5 648 | 24.75 629 | 30 762 | 27.88 708 | 15.5 394 | 9 229 | |
| FF3624-25-26 | 150 46 | 75 23 | 150 46 | 100 30 | 113 51 | 148 67 | 21 533 | 15.5 394 | 25.5 648 | 24.75 629 | 34 864 | 27.88 708 | 15.5 394 | 13 330 | |
| FF3628-25-26 | 200 61 | 100 30 | 200 61 | 150 46 | 123 56 | 173 78 | 25.5 648 | 20 508 | 25.5 648 | 24.75 629 | 38.5 978 | 27.88 708 | 15.5 394 | 17.5 445 | |
| FF3624-30-31 | 200 61 | 100 30 | 250 76 | 150 46 | 124 56 | 174 79 | 21 533 | 15.5 394 | 25.5 648 | 28.75 730 | 34 864 | 30.38 772 | 15.5 394 | 13 330 | |
| FF3628-30-31 | 275 84 | 150 46 | 300 91 | 250 76 | 134 61 | 184 83 | 25.5 648 | 20 508 | 25.5 648 | 28.75 730 | 38.5 978 | 30.38 772 | 15.5 394 | 17.5 445 | |
| FF3634-30-31 | 375 114 | 200 61 | 400 122 | 350 107 | 147 67 | 197 89 | 31.5 800 | 26 660 | 25.5 648 | 28.75 730 | 44.5 1130 | 30.38 772 | 15.5 394 | 23.5 597 | |
| FF3630-33-34 | 400 122 | 250 76 | 450 137 | 350 107 | 138 63 | 188 85 | 27.5 699 | 22 559 | 25.5 648 | 31.75 806 | 40.5 1029 | 32.38 822 | 16.5 419 | 19.5 495 | |

Notes:

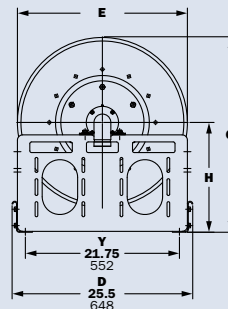
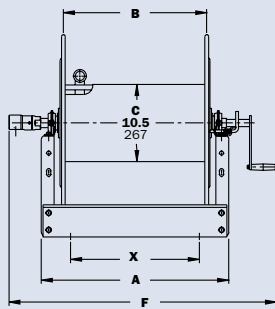
- Specifications subject to change.
- Upon request, reels can be supplied with drum lengths other than shown and with disc sizes in other diameters.
- Power rewind is not available on these models. See Series F or FF.
- 4" clearance needed for crank handle removal.
- Be sure to check dimensions and weights prior to ordering.**

NOTICE: A flexible connector must be used between the inlet pipe and the inlet swivel joint.

***X, Y indicate mounting holes.



F3100

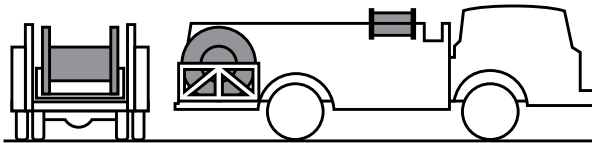


FF3600

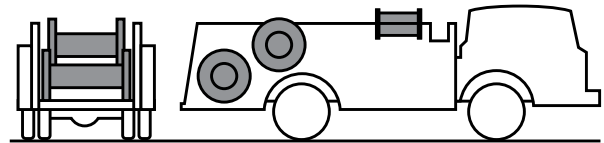
Series LD Reels and Spools | Large Diameter

Reels and spools to handle up to 6" I.D. collapsible hose.

Typical Installations:



Single large-capacity reel installed in the hose bed area to handle long lengths of pre-coupled hose. Hose pays out from the top of the reel so gravity assists unwinding.



Two reels installed in the hose bed. In this arrangement, the upper reel is unloaded only if necessary. Payout and rewinding of the upper reels are facilitated by the position of the lower reel. Two reels with larger-diameter discs and narrower drums can also be installed side-by-side in the rear of the hose bed to handle approximately the same amount of hose. This method allows a center walkway or paying out two lines simultaneously if required.

- Square tubing frames.
- Heavy-gauge steel discs.
- Drums are formed by reinforced tie rods with radial supports.
- Pillow block ball bearings.
- Chain and sprocket rewind with electric (12v or 24v) or hydraulic rewind motor.
- Hydraulic caliper disc brake.

Hydraulic Requirements

- It is important that the end-user provide Hannay Reels with complete specifications as to the required operation of the large diameter reel being specified. Any speed and torque requirements **MUST** be known to properly specify the correct reel for the application.
- Hannay Reels does not recommend specific brands for hydraulic system components. We suggest you work with your hydraulic component supplier to meet your specs.

Custom Reels

- The standard models listed represent the most frequently specified customer requirements for handling large-diameter fire hose. Because of the many possible variations in reel installation and hose capacity requirements, we will also custom build reels and spools to your specifications to become an integral part of the apparatus. Reels are built of steel construction, and various finishes are available.

Consult factory for complete specifications on an LD reel to meet your requirements.

Important: Hose capacity is based on the flat hose dimensions listed below, with couplings at 100 foot intervals.

Flat Hose Dimensions

| I.D. | Thick x Width | |
|--------|---------------|--------------|
| | in | mm |
| 1" | 1/2 x 1-3/4 | 12.7 x 44.4 |
| 1-1/2" | 3/4 x 3 | 19.0 x 76.2 |
| 1-3/4" | 7/8 x 3-1/4 | 22.2 x 79.4 |
| 2" | 3/4 x 3-1/2 | 19.0 x 88.9 |
| 2-1/2" | 3/4 x 4 | 19.0 x 101.6 |
| 3" | 1/2 x 5 | 12.7 x 127.0 |
| 4" | 1/2 x 6-1/2 | 12.7 x 165.1 |
| 5" | 1/2 x 8 | 12.7 x 203.2 |
| 6" | 1/2 x 10 | 12.7 x 254.0 |

Custom sizes are available to meet specific needs.

Large Diameter

Series LD Reels and Spools

Configurations

PARTS DRAWING – ISO 104

| Model Number | Hose Capacity of Reel feet m | | | | | | | | | | Approx. Weight (Steel) Crank Rewind lb. kg | | Reel Dimensions in. mm | | | | | | |
|--------------|---------------------------------|-------------|-------------|---------|-------------|---------|----------|----------|----------|------|---|--------------------|---------------------------|-------|------|------|------|-----|--|
| | I.D. in. mm | 1-1/2 38 | 1-3/4 44 | 2 51 | 2-1/2 64 | 3 76 | 4 102 | 5 127 | 6 152 | NET | SHIP | A HYD REWIND | A ELECT REWIND | B | D | E | G | H | |
| LD268-30 | 800 | 600 | 600 | 600 | 600 | 600 | 500 | 250 | - | 370 | 450 | 65.5 | 63 | 54 | 30.5 | 30 | 39 | 24 | |
| | 244 | 183 | 183 | 183 | 183 | 183 | 152 | 76 | - | 168 | 204 | 1664 | 1600 | 1372 | 775 | 762 | 991 | 610 | |
| LD268-33 | 1000 | 700 | 800 | 700 | 800 | 600 | 350 | - | 385 | 465 | 65.5 | 63 | 54 | 33.5 | 33 | 42 | 25.5 | | |
| | 305 | 213 | 244 | 213 | 244 | 183 | 107 | - | 175 | 211 | 1664 | 1600 | 1372 | 851 | 838 | 1067 | 648 | | |
| LD234-39 | - | 400 | 350 | 350 | 400 | 300 | 200 | - | 365 | 465 | 31.5 | 29 | 20 | 39.5 | 39 | 45 | 25.5 | | |
| | - | 122 | 107 | 107 | 122 | 91 | 61 | - | 166 | 211 | 800 | 737 | 508 | 1003 | 991 | 1143 | 648 | | |
| LD242-39 | - | 500 | 600 | 500 | 500 | 400 | 300 | - | 381 | 481 | 39.5 | 37 | 28 | 39.5 | 39 | 45 | 25.5 | | |
| | - | 152 | 183 | 152 | 152 | 122 | 91 | - | 173 | 218 | 1003 | 940 | 711 | 1003 | 991 | 1143 | 648 | | |
| LD262-39 | - | - | - | - | 1100 | 800 | 600 | - | 421 | 521 | 59.5 | 57 | 48 | 39.5 | 39 | 45 | 25.5 | | |
| | - | - | - | - | 335 | 244 | 183 | - | 191 | 236 | 1511 | 1448 | 1219 | 1003 | 991 | 1143 | 648 | | |
| LD274-39 | - | - | - | - | - | 1050 | 800 | - | 445 | 545 | 71.5 | 69 | 60 | 39.5 | 39 | 45 | 25.5 | | |
| | - | - | - | - | - | 320 | 244 | - | 202 | 247 | 1816 | 1753 | 1524 | 1003 | 991 | 1143 | 648 | | |
| LD242-45 | - | - | - | - | - | 500 | 400 | - | 427 | 557 | 40 | - | 28 | 45.5 | 45 | 51 | 28.5 | | |
| | - | - | - | - | - | 152 | 122 | - | 194 | 253 | 1016 | - | 711 | 1156 | 1143 | 1295 | 724 | | |
| LD262-45 | - | - | - | - | - | 1100 | 900 | - | 467 | 597 | 60 | - | 48 | 45.5 | 45 | 51 | 28.5 | | |
| | - | - | - | - | - | 335 | 274 | - | 212 | 271 | 1524 | - | 1219 | 1156 | 1143 | 1295 | 724 | | |
| LD274-45 | - | - | - | - | - | 1400 | 1100 | - | 491 | 621 | 72 | - | 60 | 45.5 | 45 | 51 | 28.5 | | |
| | - | - | - | - | - | 427 | 335 | - | 223 | 282 | 1829 | - | 1524 | 1156 | 1143 | 1295 | 724 | | |
| LD242-52 | - | - | - | - | - | 800 | 500 | 300 | 581 | 731 | 40 | - | 28 | 52.5 | 52 | 58 | 32 | | |
| | - | - | - | - | - | 244 | 152 | 91 | 264 | 332 | 1016 | - | 711 | 1334 | 1321 | 1473 | 813 | | |
| LD262-52 | - | - | - | - | - | 1500 | 1300 | 800 | 621 | 771 | 60 | - | 48 | 52.5 | 52 | 58 | 32 | | |
| | - | - | - | - | - | 457 | 396 | 244 | 282 | 350 | 1524 | - | 1219 | 1334 | 1321 | 1473 | 813 | | |
| LD274-52 | - | - | - | - | - | 2000 | 1500 | 1200 | 645 | 795 | 72 | - | 60 | 52.5 | 52 | 58 | 32 | | |
| | - | - | - | - | - | 610 | 457 | 366 | 283 | 361 | 1829 | - | 1524 | 1334 | 1321 | 1473 | 813 | | |
| LD250-56 | - | - | - | - | - | 1300 | 1000 | 700 | 657 | 817 | 48 | - | 36 | 56.5 | 56 | 62 | 34 | | |
| | - | - | - | - | - | 396 | 305 | 213 | 298 | 371 | 1219 | - | 914 | 1435 | 1422 | 1575 | 864 | | |
| LD262-56 | - | - | - | - | - | 1800 | 1500 | 900 | 681 | 841 | 60 | - | 48 | 56.5 | 56 | 62 | 34 | | |
| | - | - | - | - | - | 549 | 457 | 274 | 309 | 381 | 1524 | - | 1219 | 1435 | 1422 | 1575 | 864 | | |
| LD274-56 | - | - | - | - | - | 2300 | 1700 | 1400 | 705 | 865 | 72 | - | 60 | 56.5 | 56 | 62 | 34 | | |
| | - | - | - | - | - | 701 | 518 | 427 | 320 | 392 | 1829 | - | 1524 | 1435 | 1422 | 1575 | 864 | | |
| LD350-64 | - | - | - | - | - | 1700 | 1300 | 900 | 1130 | 1330 | 50.25 | - | 36 | 64.75 | 64 | 70 | 38 | | |
| | - | - | - | - | - | 518 | 396 | 274 | 513 | 603 | 1276 | - | 914 | 1645 | 1626 | 1778 | 965 | | |
| LD374-64 | - | - | - | - | - | 3000 | 2000 | 1900 | 1200 | 1400 | 74.25 | - | 60 | 64.75 | 64 | 70 | 38 | | |
| | - | - | - | - | - | 914 | 610 | 579 | 544 | 635 | 1886 | - | 1524 | 1645 | 1626 | 1778 | 965 | | |

Electric rewind not available on these models

Version F Reel:

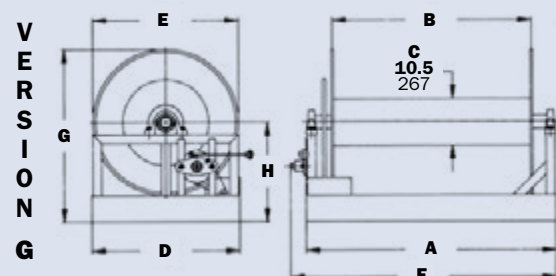
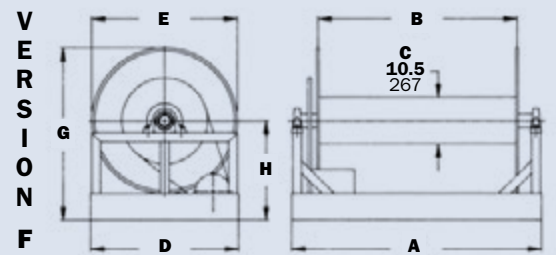
Complete reel assembly with No. 50 chain and sprocket and hydraulic rewind motor mounted inside the frame. When ordering, use prefix model number with HD (for example: HDLD 350-64 version F).

Version G Reel:

(High profile) complete reel assembly with chain and sprocket drive and electric rewind motor, including clutch and double reduction unit. Motor is mounted inside the frame. Disc diameters (E dimension) up to and including 39" only. When ordering, use prefix model number with EP (for example: EPLD 242-39 version G). "F" dimension = "A" dimension +5".

Notes:

1. Specifications subject to change.
2. Upon request, reels can be supplied with drum lengths other than shown and with disc sizes in other diameters.
3. Be sure to check dimensions and weights prior to ordering.



Mercedes and Niedner Capacities

Mercedes Hose

| Reel Model Number | Hose Capacity of Reel feet m | | | | Approx. Weight lb. kg | | | | Reel Dimensions*** in. mm | | | | | | | | | |
|-------------------|---------------------------------|-------------|-------------|-------------|--------------------------|------|----------|------|------------------------------|------|------|------|-------|------------|-------|-------|------|-------|
| | I.D. in. mm | 3/4 19 | 1 25 | 1-1/2 38 | STEEL | | ALUMINUM | | A | B | C | D | E | F POWER | G | H | X | Y |
| | O.D. in. mm | 1.062 27 | 1.281 33 | 1.812 46 | NET | SHIP | NET | SHIP | | | | | | | | | | |
| F4024-17-18 | 100 | - | - | - | 46 | 81 | - | - | 21 | 16 | 8 | 14.5 | 19 | 27 | 18.12 | 9.88 | 19.5 | 10 |
| | 30 | - | - | - | 21 | 37 | - | - | 533 | 406 | 203 | 368 | 483 | 686 | 460 | 251 | 495 | 254 |
| F4030-17-18 | 200 | - | - | - | 57 | 92 | - | - | 27 | 22 | 8 | 14.5 | 19 | 33 | 18.12 | 9.88 | 25.5 | 10 |
| | 61 | - | - | - | 26 | 42 | - | - | 686 | 559 | 203 | 368 | 483 | 838 | 460 | 251 | 648 | 254 |
| F4124-17-18 | 100 | - | - | - | 72 | 107 | - | - | 21 | 16 | 8 | 15.5 | 20.5 | 27.5 | 18.12 | 9.88 | 13.5 | 12.25 |
| | 30 | - | - | - | 33 | 49 | - | - | 533 | 406 | 203 | 394 | 521 | 699 | 460 | 251 | 343 | 311 |
| F4130-17-18 | 200 | - | - | - | 83 | 118 | - | - | 27 | 22 | 8 | 15.5 | 20.5 | 33.5 | 18.12 | 9.88 | 19.5 | 12.25 |
| | 61 | - | - | - | 38 | 54 | - | - | 686 | 559 | 203 | 394 | 521 | 851 | 460 | 251 | 495 | 311 |
| *F32-19-21 | 175 | 150 | - | - | 102 | 144 | 80 | 122 | 29.5 | 24 | 10.5 | 20.5 | 21.62 | 34.38 | 21.5 | 12.12 | 21.5 | 16.75 |
| | 53 | 46 | - | - | 46 | 65 | 36 | 55 | 749 | 610 | 267 | 521 | 549 | 873 | 546 | 308 | 546 | 425 |
| *F24-23-24 | 200 | 150 | - | - | 92 | 134 | 75 | 117 | 21 | 15.5 | 10.5 | 20.5 | 23 | 25.88 | 23.5 | 12.12 | 13 | 16.75 |
| | 61 | 46 | - | - | 42 | 61 | 34 | 53 | 533 | 394 | 267 | 521 | 584 | 657 | 597 | 308 | 330 | 425 |
| *F30-23-24 | 300 | 200 | - | - | 105 | 147 | 82 | 124 | 27.5 | 22 | 10.5 | 20.5 | 23 | 32.38 | 23.5 | 12.12 | 19.5 | 16.75 |
| | 91 | 61 | - | - | 48 | 67 | 37 | 56 | 699 | 559 | 267 | 521 | 584 | 822 | 597 | 308 | 495 | 425 |
| *F16.5-30-31 | 200 | 150 | - | - | 100 | 150 | 80 | 130 | 13.5 | 8 | 10.5 | 25.5 | 28.75 | 18.38 | 29.88 | 15.5 | 5.5 | 21.75 |
| | 61 | 46 | - | - | 45 | 68 | 36 | 59 | 343 | 203 | 267 | 648 | 730 | 467 | 759 | 394 | 140 | 552 |
| *F20-30-31 | 300 | 200 | - | - | 107 | 157 | 83 | 133 | 17 | 11.5 | 10.5 | 25.5 | 28.75 | 21.88 | 29.88 | 15.5 | 9 | 21.75 |
| | 91 | 61 | - | - | 49 | 71 | 38 | 60 | 432 | 292 | 267 | 648 | 730 | 556 | 759 | 394 | 229 | 552 |
| FF32-30-31-20 | - | - | 100 | - | 138 | 188 | 100 | 150 | 29.5 | 24 | 20 | 25.5 | 28.75 | 36.25 | 29.88 | 15.5 | 21.5 | 21.75 |
| | - | - | 30 | - | 63 | 54 | 45 | 68 | 749 | 610 | 508 | 648 | 730 | 921 | 759 | 394 | 546 | 552 |
| FF34-33-34-20 | - | - | 200 | - | 140 | 194 | 106 | 160 | 31 | 26 | 20 | 31.5 | 31.75 | 37.75 | 33.62 | 17.75 | 23.5 | 27.75 |
| | - | - | 61 | - | 64 | 88 | 48 | 73 | 787 | 660 | 508 | 800 | 806 | 959 | 854 | 451 | 597 | 705 |

Niedner Hose

| Reel Model Number | Hose Capacity of Reel feet m | | | | Approx. Weight lb. kg | | | | Reel Dimensions*** in. mm | | | | | | | | | |
|-------------------|---------------------------------|-------------|-------------|-------------|--------------------------|------|----------|------|------------------------------|------|------|------|-------|------------|-------|-------|------|-------|
| | I.D. in. mm | 3/4 19 | 1 25 | 1-1/2 38 | STEEL | | ALUMINUM | | A | B | C | D | E | F POWER | G | H | X | Y |
| | O.D. in. mm | 1.075 27 | 1.325 34 | 1.825 46 | NET | SHIP | NET | SHIP | | | | | | | | | | |
| *F28-19-21-10.5 | 100 | - | - | - | 98 | 140 | 76 | 118 | 25.5 | 20 | 10.5 | 20.5 | 21.62 | 30.25 | 21.5 | 12.12 | 17.5 | 16.75 |
| | 30 | - | - | - | 44 | 64 | 34 | 54 | 648 | 508 | 267 | 521 | 549 | 768 | 546 | 308 | 445 | 425 |
| *F26-23-24-10.5 | 200 | - | - | - | 94 | 136 | 71 | 113 | 23 | 17.5 | 10.5 | 20.5 | 23 | 27.88 | 23.5 | 12.12 | 15 | 16.75 |
| | 61 | - | - | - | 43 | 62 | 32 | 51 | 584 | 445 | 267 | 521 | 584 | 708 | 597 | 308 | 381 | 425 |
| *F24-23-24-12 | - | 100 | - | - | 92 | 134 | 75 | 117 | 21 | 15.5 | 12 | 20.5 | 23 | 25.88 | 23.5 | 12.12 | 13 | 16.75 |
| | - | 30 | - | - | 42 | 61 | 34 | 53 | 533 | 394 | 305 | 521 | 584 | 657 | 597 | 308 | 330 | 425 |
| F28-25-26-12 | - | 200 | - | - | 113 | 155 | 87 | 129 | 25.5 | 20 | 12 | 25.5 | 24.75 | 32.25 | 27.88 | 15.5 | 17.5 | 21.75 |
| | - | 61 | - | - | 51 | 70 | 39 | 59 | 648 | 508 | 305 | 648 | 629 | 819 | 708 | 394 | 445 | 552 |
| FF32-30-31-20 | - | - | 100 | - | 138 | 188 | 100 | 150 | 29.5 | 24 | 20 | 25.5 | 28.75 | 36.25 | 29.88 | 15.5 | 21.5 | 21.75 |
| | - | - | 30 | - | 63 | 54 | 45 | 68 | 749 | 610 | 508 | 648 | 730 | 921 | 759 | 394 | 546 | 552 |
| FF34-33-34-20 | - | - | 200 | - | 140 | 194 | 106 | 160 | 31 | 26 | 20 | 31.5 | 31.75 | 37.75 | 33.62 | 17.75 | 23.5 | 27.75 |
| | - | - | 61 | - | 64 | 88 | 48 | 73 | 787 | 660 | 508 | 800 | 806 | 959 | 854 | 451 | 597 | 705 |

Notes:

1. Specifications subject to change.
2. These reels require a special angle riser and larger diameter drum; consult factory.
3. For F Series – Refer to notes and diagram on page 7.
4. For FF Series – Refer to notes and diagram on page 11.

NOTICE: A flexible connector must be used between the inlet pipe and the inlet swivel joint.
 *The "F" dimension for these models is shown for 1/3 HP motors. Add 2" to "F" dimension for 1/2 HP motors. The "F" dimension for all other reels is shown for 1/2 HP. Reels handling 200' or more must use 1/2 HP motor. (Use prefix EP when ordering.)
 *** X, Y indicate mounting holes.

Hannay Reels Versatility

Firefighting and rescue operations around the country depend on the versatility of Hannay Reels.

For decades, Hannay Reels has set the standard of quality and reliability for hose reels in the firefighting industry.

But as the needs of the industry change, so do our reels. Hannay prides itself on being able to conform to new standards required by the firefighting industry – reels that fit into side compartments or bumper mounts, open reel installation or swing-out reels for easy, quick access.



Through research and development of internationally recognized standard models, to custom one-of-a-kind applications, Hannay continues to meet the specific needs of the vehicle or individual fire department.

In supplying both apparatus manufacturers and aftermarket fire departments worldwide, Hannay has consistently serviced the needs of the industry. With Hannay reels, there's no draining, stacking or dragging. Plus, firefighters appreciate quick attack and fast pick-up.



**What size reel
can we build for you?**



Hannay Reels **Sales Policies**

Our Guarantee and Service Policy - 2 Year Warranty

Equipment manufactured by Hannay Reels, Inc. is guaranteed for **2 years** from date of shipment when installed according to our instructions, given proper care, and used for the purpose for which it is designed.

Equipment which proves to be defective upon our inspection will be replaced free of charge, including freight to the customer. Our responsibility ceases upon delivery to any common carrier and we do not, unless previously instructed, insure shipments beyond point of delivery to such carrier. No material will be accepted for return without a return goods authorization. No allowance will be made for labor charges incurred in making exchanges, replacements or repairs.

Components (including hose and cable) which are manufactured by other vendors will be subject to the warranty terms of their own manufacturers.

Also excluded from the general guarantee are normal wear items (including seals, motor brushes, and paint finish).

We reserve the right to modify or alter materials, dimensions, design, and construction when necessary to improve the performance of the reel and/or accessories, or to meet delivery requirements.

Failure to use a properly sized circuit breaker with any electric rewind motor will void warranty on motor.

Failure to use a flexible connector with any live hose reel will void warranty on swivel joint.

We expressly disclaim any liability for damage or injuries resulting from the use, operation, service, maintenance or failure of equipment.

Notice on Reel Finish

Standard finish on Hannay reels is a high performance modified acrylic enamel paint. Standard color is metallic graphite. Other colors available at no additional cost include red, white, black, and primer.

Most of the major components on standard reels are e-coated prior to receiving final topcoat paint finish. This combination of e-coat and enamel topcoat will meet the finish requirements of most customer applications and environments.

In cases where requirements cannot be met with the standard finish, Hannay Reels can coat any model reel with an automotive primer, allowing application of final coating at your facility. Alternatively, Hannay Reels can provide a quote for matching a customer-provided paint specification. For further information, please contact your Hannay Reels sales engineer and a special paint request form will be sent to you.

For environments where no paint finish is suitable, we offer both aluminum and stainless steel (304 grade) construction on most reel models.

Return Goods Policy

All Hannay reels are built to order. The parts and components are ordered or placed into production as soon as the order is written.

In order to keep the number of returned goods at a minimum, we ask that you use the Hannay Reels Spec Worksheet and/or Accessory Order Form when specifying reels with us.

Be sure to include any size and/or weight limitations for your installation.

In the event that an item does need to be returned for credit, repair or replacement, prior approval **must** be obtained from Hannay Reels, Inc. Upon your request, we will fax a Return Goods Authorization form. A signed copy of this form must accompany the material when returned to us.

All material must be returned prepaid, unless otherwise noted on our Return Goods Authorization. No return will be accepted that has been damaged due to improper return packaging, tampered with or altered from its original condition. **Equipment specially built to customer specifications and requirements is not subject to cancellation or returnable for credit under any conditions.**

Our restocking and handling fee is a MINIMUM of 25% for standard catalog reels and parts.

No material will be accepted for credit when returned without permission. Orders for equipment incorporating variations from catalog listed items are special and are not subject to return.

No allowance will be made for labor or mileage charges incurred in making exchanges, replacements or repairs.

Hose Reel **Spec Worksheet**

To specify Hannay reels, fill out this simple form and mail or fax it to your dealer.
Photocopy this page or download and print from hannay.com

1. Who is the reel for?

| | | | |
|----------------|-------|----------|---------|
| Contact | | Date / / | |
| Company | | Division | |
| Street Address | | | |
| City | State | Zip | Country |
| Telephone () | | Fax () | |

2. What is the reel for?

HOSE (check one): Storage only Live Single hose Live Dual hose

| | | | |
|-------------------|--------------|-------------------|-----------------------|
| Inside diameter: | Hose length: | Bend radius: | Flat hose dimensions: |
| Outside diameter: | Hose weight: | Coupling spacing: | |

Type of product handled live application: (check one):

| | | | |
|---|------------------------------------|--|--|
| <input type="radio"/> Liquid (specify): | <input type="radio"/> Temperature: | <input type="radio"/> Oxygen/Acetylene: | <input type="radio"/> Other (specify): |
| <input type="radio"/> Gases (specify): | <input type="radio"/> Pressure: | <input type="radio"/> Hydraulic fluid (specify): | |

Fluid path type: (check one): Steel (standard) Aluminum Stainless Steel Other

Reel inlet type: (check one): Swivel joint 90° (standard) Straight

Reel outlet type (riser): Size:

| | | | |
|---------------------|--|--|-----------------------------|
| Thread (check one): | <input type="radio"/> National Pipe Thread (NPT) | <input type="radio"/> Joint Industry Committee (JIC) | <input type="radio"/> Other |
| | <input type="radio"/> National Standard Thread (NST) | <input type="radio"/> British Standard Pipe (BSP) | |

Indicate your custom specifications

4. Specifying Location of Components

Optional Location of Components:

Location of the inlet, outlet riser, and rewind mechanism can be varied to meet your requirements and **must be specified on your order**. Unless otherwise specified, most reels will be shipped as **Right Top Rewind** with the inlet, outlet riser, and rewind mechanism on the operator's right.



RT - Right Top Rewind
Standard - Always look at your reel from this position to determine right hand or left hand.



RB - Right Bottom Rewind



LT - Left Top Rewind
Standard for 1500, 1800, 2000 & 4000 Series reels.



LB - Left Bottom Rewind

Note: Use component location initials as suffix after model number (ie: EF32-23-24 RT)

3. What features does the reel need? Check type of rewind:

MANUAL REWIND

Disc rewind (hand over hand) Gear-driven crank Direct crank (permanent or removable) Chain-driven crank

POWER REWIND

Spring Air Electric (voltage): Hydraulic

Type of installation (check one): Floor Wall Overhead Vehicle

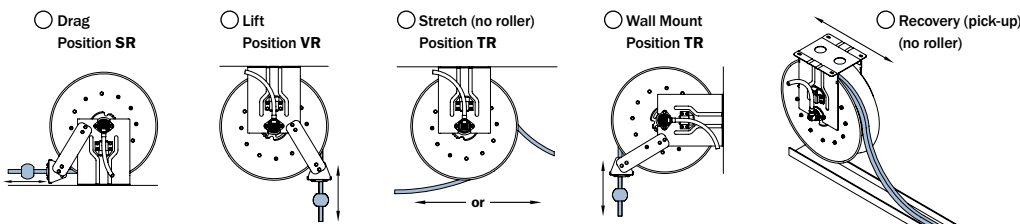
Temperature Range: Environment:

Accessories (if any): Hose Stop: Yes No

Roller Assemblies:

Finish: Painted steel (standard) Aluminum Polished Unpolished Stainless steel Polished Unpolished

Check type of installation and roller position for spring reels:



Constant tension available on all roller positions

5. Please note size and/or weight limitations for your installation

SPECIFICATIONS

Length: _____

Height: _____

Width: _____

Weight: _____

For custom applications not found in our catalogs, call the Inside Sales Group at 518-797-3791.

You Can't Buy A Better Reel.

Find reels for every need.

Learn more about all of our reels, including specs, drawings, and even how to select the right reels and accessories for your industry.



Only one reel is built strong to last long.

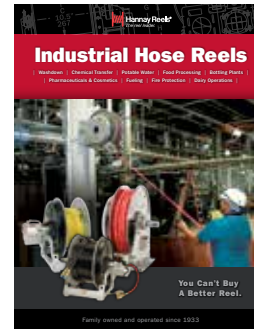
Our reels are custom designed to meet your unique specs, never retrofitted to the job. So no matter how small the footprint, you can expect superior performance every time. And we only use high quality, heavy-duty materials – never plastic – which is why our reels often outlast the vehicles they're on. For reels that outlast and outperform all the others, you can depend on Hannay, the leader in OEM, industrial, and commercial reel applications.



Rescue Reels

Details on:

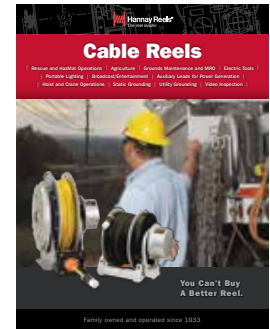
- Utility or breathing air hose reels
- Live electric cable reels
- Power rescue tool reels
- Portable electric cable reels



Hose Reels

Includes specs and information on:

- High pressure spring rewind reels
- Compact manual rewind reels
- Power rewind reels
- Portable storage reels
- Hose assemblies



Cable Reels

Find out more about:

- Manual and power rewind reels
- Storage reels
- Reels for live electric cable
- Portable reels
- Static and truck grounding reels

View all our reel catalogs online at hannay.com



Family owned and operated since 1933, Hannay Reels is the world leader in both OEM and aftermarket applications. Hannay offers thousands of standard hose reel and cable reel models, as well as unmatched custom capabilities. We can easily and affordably customize a reel to meet your exact specifications – built to last, delivered fast. Additional catalogs are available through your local Hannay Reels dealer or online at hannay.com.



553 State Route 143 | Westerlo, New York 12193
Email: reels@hannay.com | hannay.com



All Hannay reels are constructed of quality heavy gauge steel (optional aluminum or stainless steel also available on most models).

Phone: **518-797-3791**
Toll Free: **1-877-467-3357**

Domestic FAX: **1-800-733-5464**
International FAX: **518-797-3259**

Form H-0502-F REV WEB 6-15

