

The University of California

Statistical Summary of Students and Staff



Fall 2011



Statistical Summary of Students and Staff

University of California

Fall 2011

Foreword

The University of California *Statistical Summary of Students and Staff* for fall 2011 is divided into three sections: Enrollment, Degrees Conferred, and Personnel. Each section provides information for the University as a whole and for each of the ten campuses at which students are enrolled: Berkeley, Davis, Irvine, Los Angeles, Merced, Riverside, San Diego, San Francisco, Santa Barbara, and Santa Cruz. The Personnel section also provides information for the Office of the President and the Division of Agriculture & Natural Resources. Explanatory notes located at the end of the document provide definitions for the terms used in the tables.

In addition to current year information, this *Statistical Summary of Students and Staff* displays statistics for the prior year and the percentage change between years. Further historical data are available on the *Statistical Summary of Students and Staff* web site at:

<http://www.ucop.edu/ucophome/uwnews/stat/>

Data for the *Statistical Summary of Students and Staff* were generated from the University of California Corporate Student System and Corporate Personnel System. These systems are maintained by the Office of the President and incorporate data provided by the campuses. Questions about the content of the Enrollment and Degree sections of the report should be directed to Chris Handy at (510) 987-9417. Questions about the content of the Personnel section of the report should be directed to Brandon Wong at (510) 987-9550.

An electronic version of the *Statistical Summary of Students and Staff* for fall 2011 may be downloaded from <http://www.ucop.edu/ucophome/uwnews/stat/>. Printed copies may be obtained by sending an email request to dwcshelp@ucop.edu.

Prepared by:

Department of Information Technology Services

Office of the President

University of California

NONDISCRIMINATION STATEMENT

The University of California, in accordance with applicable Federal and State law and University policy, does not discriminate on the basis of race, color, national origin, religion, sex, gender identity, pregnancy,¹ physical or mental disability, medical condition (cancer related or genetic characteristics), genetic information (including family medical history),² ancestry, marital status, age, sexual orientation, citizenship, or service in the uniformed services.³ The University also prohibits sexual harassment. This nondiscrimination policy covers admission, access, and treatment in University programs and activities.

¹ *Pregnancy* includes pregnancy, childbirth, and medical conditions related to pregnancy or childbirth.

² *Genetic information (including family medical history)* as applicable to University employees by the Genetic Information Nondiscrimination Act (GINA).

³ *Service in the uniformed services* includes membership, application for membership, performance of service, application for service, or obligation for service in the uniformed services.

Inquiries regarding the University's student-related nondiscrimination policies may be directed to Eric Heng, (510) 987-0239.

The University of California policy on affirmative action and nondiscrimination regarding employment practices may be found at

http://www.ucop.edu/ucophome/coordrev/policy/PP061008nondiscrimination_emprac.pdf

The University of California policy on affirmative action and nondiscrimination regarding academic appointments may be found at <http://www.ucop.edu/acadadv/acadpers/apm/apm-035.pdf>

Inquiries regarding the University's equal employment opportunity policies may be directed to:
Academic Personnel: Nancy Tanaka, (510) 987-0997; Staff and Management: Eleanor Skarakis, (510) 987-0888.

Table of Contents

Fall Enrollment

Figure 1	Undergraduate Enrollment by Campus, 2001-2011	1
Figure 2	Graduate Enrollment by Campus, 2001-2011	1
Table 1	Enrollment by Campus, Level, and Gender	
	a. General Campus and Health Sciences Combined	2
	b. General Campus	4
	c. Health Sciences	6
Table 2	Enrollment by Campus, Registration Status, and Level	7
Figure 3	New Undergraduate Students by Campus, 2007-2011	8
Figure 4	New Graduate Students by Campus, 2007-2011	8
Table 3	General Campus Enrollment by Campus, Full-time/Part-time Status, Gender, and Level	9
Table 4	General Campus Enrollment by Campus, Discipline, and Level	10
Table 5	Health Sciences Enrollment by Campus, Discipline, and Level	14
Table 6	Enrollment by Campus, Residency Status, and Level	16
Table 7	Enrollment by Ethnicity, Gender, and Level	
	a. Berkeley	17
	b. Davis	18
	c. Irvine	19
	d. Los Angeles	20
	e. Merced	21
	f. Riverside	22
	g. San Diego	23
	h. San Francisco	24
	i. Santa Barbara	25
	j. Santa Cruz	26
	k. University Total	27

Degrees Conferred

Table 8	Degrees Conferred by Campus, Degree Type, and Gender	28
Table 9	Degrees Conferred by Discipline and Degree Type	30

Personnel

Table 10	Personnel FTE and Headcount by Campus and Personnel Program	31
Table 11	Personnel Headcount by Ethnicity, Personnel Program, and Gender	
	a. Berkeley	33
	b. Davis	34
	c. Irvine	35
	d. Los Angeles	36
	e. Merced	37
	f. Riverside	38
	g. San Diego	39
	h. San Francisco	40
	i. Santa Barbara	41
	j. Santa Cruz	42
	k. Office of the President	43
	l. Agriculture & Natural Resources	44
	m. University Total	45

Explanatory Notes	46
--------------------------------	----

Figure 1: Undergraduate Enrollment by Campus, 2001-2011

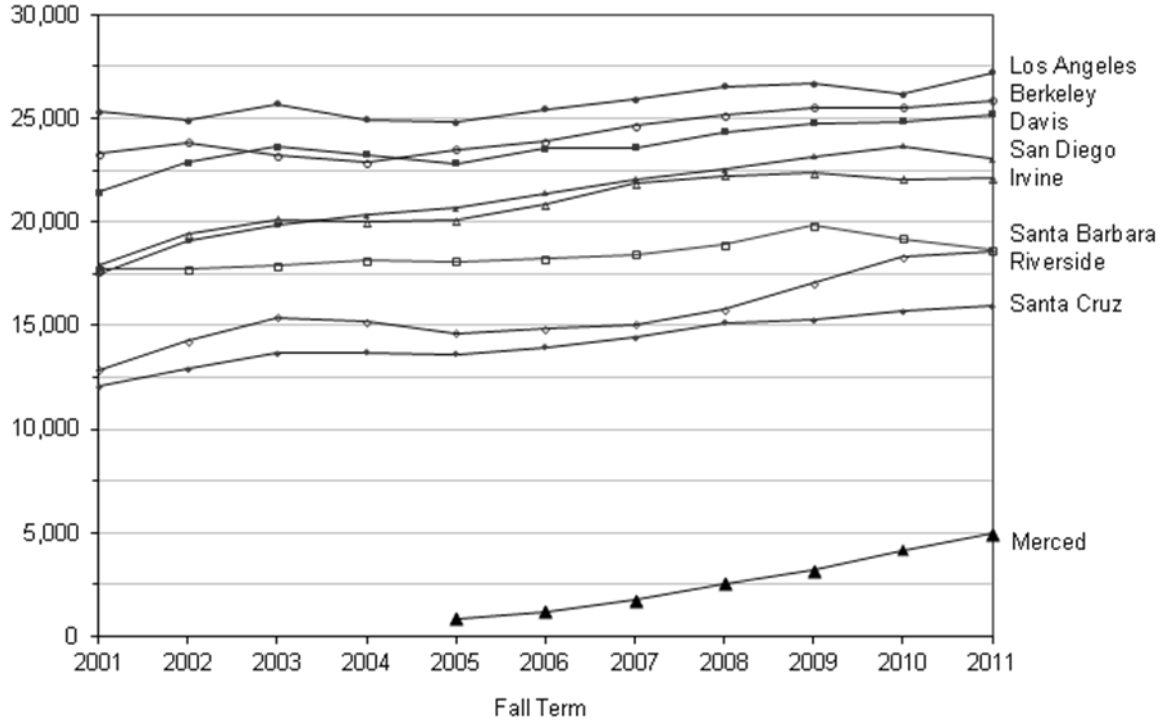


Figure 2: Graduate Enrollment by Campus, 2001-2011

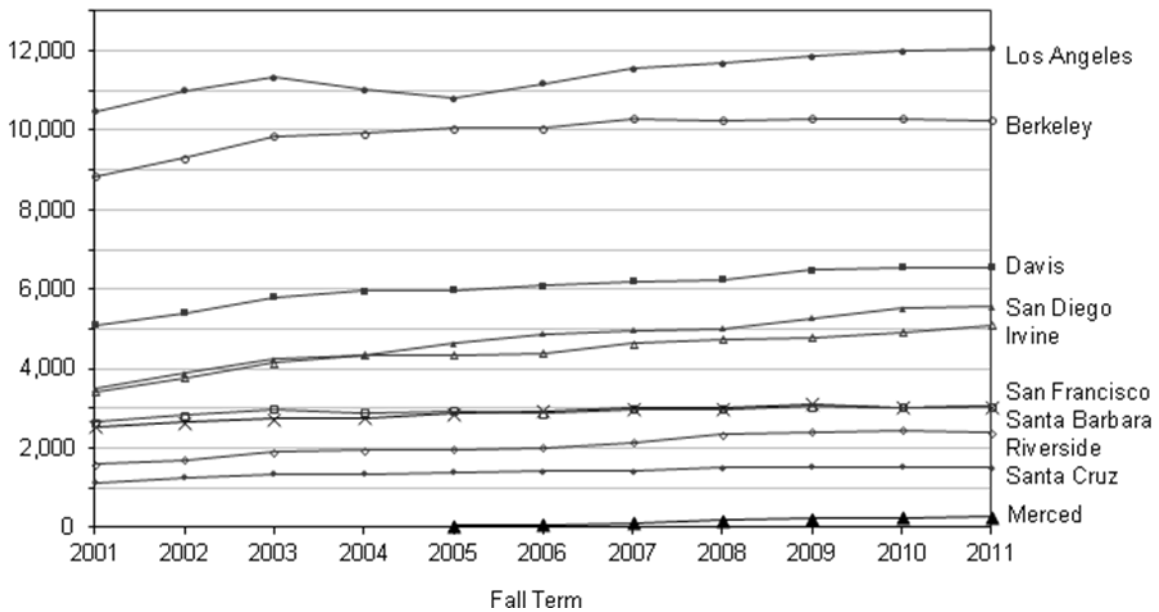


Table 1a: Enrollment by Campus, Level, and Gender: General Campus and Health Sciences Combined

	Fall 2010				Fall 2011				One-year change		
	Female	Male	Unk	Total	Female	Male	Unk	Total	Female	Male	Total
Berkeley	18,127	17,711	0	35,838	18,245	17,897	0	36,142	1%	1%	1%
Undergraduate	13,513	12,027	0	25,540	13,660	12,225	0	25,885	1%	2%	1%
Lower Division	4,327	3,386	0	7,713	4,210	3,461	0	7,671	-3%	2%	-1%
Upper Division	9,186	8,641	0	17,827	9,450	8,764	0	18,214	3%	1%	2%
Graduate	4,610	5,683	0	10,293	4,580	5,672	0	10,252	-1%	0%	0%
1st Stage	3,666	4,551	0	8,217	3,486	4,338	0	7,824	-5%	-5%	-5%
2nd Stage	944	1,132	0	2,076	1,094	1,334	0	2,428	16%	18%	17%
Resident	4	1	0	5	5	0	0	5	25%	-100%	0%
Davis	17,537	14,753	0	32,290	17,651	15,000	2	32,653	1%	2%	1%
Undergraduate	13,766	11,081	0	24,847	13,863	11,314	0	25,177	1%	2%	1%
Lower Division	5,183	4,006	0	9,189	5,232	3,994	0	9,226	1%	0%	0%
Upper Division	8,450	7,031	0	15,481	8,531	7,281	0	15,812	1%	4%	2%
Postbaccalaureate	133	44	0	177	100	39	0	139	-25%	-11%	-21%
Graduate	3,297	3,248	0	6,545	3,294	3,259	2	6,555	0%	0%	0%
1st Stage	2,729	2,563	0	5,292	2,720	2,606	2	5,328	0%	2%	1%
2nd Stage	568	685	0	1,253	574	653	0	1,227	1%	-5%	-2%
Resident	474	424	0	898	494	427	0	921	4%	1%	3%
Irvine	14,181	13,350	145	27,676	14,392	13,376	121	27,889	1%	0%	1%
Undergraduate	11,837	10,091	143	22,071	12,013	9,975	118	22,106	1%	-1%	0%
Lower Division	4,591	3,483	28	8,102	5,066	3,767	16	8,849	10%	8%	9%
Upper Division	7,175	6,584	115	13,874	6,870	6,183	102	13,155	-4%	-6%	-5%
Postbaccalaureate	71	24	0	95	77	25	0	102	8%	4%	7%
Graduate	2,018	2,904	1	4,923	2,046	3,036	1	5,083	1%	5%	3%
1st Stage	1,619	2,338	1	3,958	1,659	2,463	1	4,123	2%	5%	4%
2nd Stage	399	566	0	965	387	573	0	960	-3%	1%	-1%
Resident	326	355	1	682	333	365	2	700	2%	3%	3%
Los Angeles	20,701	18,892	0	39,593	21,175	19,500	0	40,675	2%	3%	3%
Undergraduate	14,398	11,764	0	26,162	14,913	12,288	0	27,201	4%	4%	4%
Lower Division	4,683	3,350	0	8,033	5,179	3,925	0	9,104	11%	17%	13%
Upper Division	9,715	8,414	0	18,129	9,732	8,363	0	18,095	0%	-1%	0%
Postbaccalaureate	0	0	0	0	2	0	0	2	n/a	n/a	n/a
Graduate	5,545	6,450	0	11,995	5,522	6,548	0	12,070	0%	2%	1%
1st Stage	4,842	5,571	0	10,413	4,790	5,639	0	10,429	-1%	1%	0%
2nd Stage	703	879	0	1,582	732	909	0	1,641	4%	3%	4%
Resident	758	678	0	1,436	740	664	0	1,404	-2%	-2%	-2%
Merced	2,127	2,224	30	4,381	2,548	2,616	34	5,198	20%	18%	19%
Undergraduate	2,034	2,074	30	4,138	2,457	2,447	34	4,938	21%	18%	19%
Lower Division	1,316	1,227	13	2,556	1,485	1,350	10	2,845	13%	10%	11%
Upper Division	718	847	17	1,582	972	1,097	24	2,093	35%	30%	32%
Graduate	93	150	0	243	91	169	0	260	-2%	13%	7%
1st Stage	64	104	0	168	56	106	0	162	-13%	2%	-4%
2nd Stage	29	46	0	75	35	63	0	98	21%	37%	31%
Riverside	10,547	10,140	59	20,746	10,705	10,192	58	20,955	1%	1%	1%
Undergraduate	9,452	8,782	59	18,293	9,642	8,874	58	18,574	2%	1%	2%
Lower Division	5,112	4,501	9	9,622	4,722	4,109	5	8,836	-8%	-9%	-8%
Upper Division	4,298	4,272	50	8,620	4,879	4,754	53	9,686	14%	11%	12%
Postbaccalaureate	42	9	0	51	41	11	0	52	-2%	22%	2%
Graduate	1,095	1,358	0	2,453	1,063	1,318	0	2,381	-3%	-3%	-3%
1st Stage	774	955	0	1,729	762	895	0	1,657	-2%	-6%	-4%
2nd Stage	321	403	0	724	301	423	0	724	-6%	5%	0%

Table 1a: Enrollment by Campus, Level, and Gender: General Campus and Health Sciences Combined

	Fall 2010				Fall 2011				One-year change		
	Female	Male	Unk	Total	Female	Male	Unk	Total	Female	Male	Total
San Diego	14,716	15,183	0	29,899	14,320	15,004	0	29,324	-3%	-1%	-2%
Undergraduate	12,068	11,595	0	23,663	11,646	11,400	0	23,046	-3%	-2%	-3%
Lower Division	3,862	3,297	0	7,159	3,595	3,059	0	6,654	-7%	-7%	-7%
Upper Division	8,206	8,298	0	16,504	8,051	8,341	0	16,392	-2%	1%	-1%
Graduate	2,295	3,218	0	5,513	2,319	3,228	0	5,547	1%	0%	1%
1st Stage	1,865	2,575	0	4,440	1,897	2,593	0	4,490	2%	1%	1%
2nd Stage	430	643	0	1,073	422	635	0	1,057	-2%	-1%	-1%
Resident	353	370	0	723	355	376	0	731	1%	2%	1%
San Francisco	2,762	1,874	0	4,636	2,789	1,921	6	4,716	1%	3%	2%
Graduate	1,912	1,112	0	3,024	1,905	1,148	1	3,054	0%	3%	1%
1st Stage	1,703	965	0	2,668	1,732	993	1	2,726	2%	3%	2%
2nd Stage	209	147	0	356	173	155	0	328	-17%	5%	-8%
Resident	850	762	0	1,612	884	773	5	1,662	4%	1%	3%
Santa Barbara	11,514	10,704	0	22,218	11,137	10,548	0	21,685	-3%	-1%	-2%
Undergraduate	10,126	9,073	0	19,199	9,774	8,862	0	18,636	-3%	-2%	-3%
Lower Division	4,429	3,648	0	8,077	4,166	3,517	0	7,683	-6%	-4%	-5%
Upper Division	5,686	5,423	0	11,109	5,596	5,341	0	10,937	-2%	-2%	-2%
Postbaccalaureate	11	2	0	13	12	4	0	16	9%	100%	23%
Graduate	1,388	1,631	0	3,019	1,363	1,686	0	3,049	-2%	3%	1%
1st Stage	981	1,088	0	2,069	934	1,157	0	2,091	-5%	6%	1%
2nd Stage	407	543	0	950	429	529	0	958	5%	-3%	1%
Santa Cruz	8,902	8,217	68	17,187	9,016	8,375	63	17,454	1%	2%	2%
Undergraduate	8,209	7,392	67	15,668	8,332	7,550	63	15,945	1%	2%	2%
Lower Division	3,596	2,989	0	6,585	3,754	3,083	0	6,837	4%	3%	4%
Upper Division	4,613	4,403	67	9,083	4,578	4,467	63	9,108	-1%	1%	0%
Graduate	693	825	1	1,519	684	825	0	1,509	-1%	0%	-1%
1st Stage	467	604	1	1,072	473	576	0	1,049	1%	-5%	-2%
2nd Stage	226	221	0	447	211	249	0	460	-7%	13%	3%
University Total	121,114	113,048	302	234,464	121,978	114,429	284	236,691	1%	1%	1%
Undergraduate	95,403	83,879	299	179,581	96,300	84,935	273	181,508	1%	1%	1%
Lower Division	37,099	29,887	50	67,036	37,409	30,265	31	67,705	1%	1%	1%
Upper Division	58,047	53,913	249	112,209	58,659	54,591	242	113,492	1%	1%	1%
Postbaccalaureate	257	79	0	336	232	79	0	311	-10%	0%	-7%
Graduate	22,946	26,579	2	49,527	22,867	26,889	4	49,760	0%	1%	0%
1st Stage	18,710	21,314	2	40,026	18,509	21,366	4	39,879	-1%	0%	0%
2nd Stage	4,236	5,265	0	9,501	4,358	5,523	0	9,881	3%	5%	4%
Resident	2,765	2,590	1	5,356	2,811	2,605	7	5,423	2%	1%	1%

Table 1b: Enrollment by Campus, Level, and Gender: General Campus

	Fall 2010				Fall 2011				One-year change		
	Female	Male	Unk	Total	Female	Male	Unk	Total	Female	Male	Total
Berkeley	17,513	17,500	0	35,013	17,677	17,696	0	35,373	1%	1%	1%
Undergraduate	13,512	12,025	0	25,537	13,657	12,222	0	25,879	1%	2%	1%
Lower Division	4,327	3,386	0	7,713	4,210	3,461	0	7,671	-3%	2%	-1%
Upper Division	9,185	8,639	0	17,824	9,447	8,761	0	18,208	3%	1%	2%
Graduate	4,001	5,475	0	9,476	4,020	5,474	0	9,494	0%	0%	0%
1st Stage	3,089	4,360	0	7,449	2,959	4,155	0	7,114	-4%	-5%	-4%
2nd Stage	912	1,115	0	2,027	1,061	1,319	0	2,380	16%	18%	17%
Davis	16,108	13,901	0	30,009	16,205	14,126	0	30,331	1%	2%	1%
Undergraduate	13,692	11,045	0	24,737	13,814	11,282	0	25,096	1%	2%	1%
Lower Division	5,109	3,970	0	9,079	5,183	3,962	0	9,145	1%	0%	1%
Upper Division	8,450	7,031	0	15,481	8,531	7,281	0	15,812	1%	4%	2%
Postbaccalaureate	133	44	0	177	100	39	0	139	-25%	-11%	-21%
Graduate	2,416	2,856	0	5,272	2,391	2,844	0	5,235	-1%	0%	-1%
1st Stage	1,898	2,203	0	4,101	1,869	2,219	0	4,088	-2%	1%	0%
2nd Stage	518	653	0	1,171	522	625	0	1,147	1%	-4%	-2%
Irvine	13,379	12,670	143	26,192	13,595	12,690	118	26,403	2%	0%	1%
Undergraduate	11,691	10,071	143	21,905	11,874	9,959	118	21,951	2%	-1%	0%
Lower Division	4,535	3,476	28	8,039	5,017	3,764	16	8,797	11%	8%	9%
Upper Division	7,085	6,571	115	13,771	6,780	6,170	102	13,052	-4%	-6%	-5%
Postbaccalaureate	71	24	0	95	77	25	0	102	8%	4%	7%
Graduate	1,688	2,599	0	4,287	1,721	2,731	0	4,452	2%	5%	4%
1st Stage	1,328	2,062	0	3,390	1,371	2,186	0	3,557	3%	6%	5%
2nd Stage	360	537	0	897	350	545	0	895	-3%	1%	0%
Los Angeles	18,321	17,307	0	35,628	18,819	17,883	0	36,702	3%	3%	3%
Undergraduate	14,188	11,736	0	25,924	14,707	12,256	0	26,963	4%	4%	4%
Lower Division	4,592	3,340	0	7,932	5,091	3,916	0	9,007	11%	17%	14%
Upper Division	9,596	8,396	0	17,992	9,614	8,340	0	17,954	0%	-1%	0%
Postbaccalaureate	0	0	0	0	2	0	0	2	n/a	n/a	n/a
Graduate	4,133	5,571	0	9,704	4,112	5,627	0	9,739	-1%	1%	0%
1st Stage	3,528	4,750	0	8,278	3,496	4,783	0	8,279	-1%	1%	0%
2nd Stage	605	821	0	1,426	616	844	0	1,460	2%	3%	2%
Merced	2,127	2,224	30	4,381	2,548	2,616	34	5,198	20%	18%	19%
Undergraduate	2,034	2,074	30	4,138	2,457	2,447	34	4,938	21%	18%	19%
Lower Division	1,316	1,227	13	2,556	1,485	1,350	10	2,845	13%	10%	11%
Upper Division	718	847	17	1,582	972	1,097	24	2,093	35%	30%	32%
Graduate	93	150	0	243	91	169	0	260	-2%	13%	7%
1st Stage	64	104	0	168	56	106	0	162	-13%	2%	-4%
2nd Stage	29	46	0	75	35	63	0	98	21%	37%	31%
Riverside	10,527	10,102	59	20,688	10,681	10,161	58	20,900	1%	1%	1%
Undergraduate	9,452	8,782	59	18,293	9,642	8,874	58	18,574	2%	1%	2%
Lower Division	5,112	4,501	9	9,622	4,722	4,109	5	8,836	-8%	-9%	-8%
Upper Division	4,298	4,272	50	8,620	4,879	4,754	53	9,686	14%	11%	12%
Postbaccalaureate	42	9	0	51	41	11	0	52	-2%	22%	2%
Graduate	1,075	1,320	0	2,395	1,039	1,287	0	2,326	-3%	-3%	-3%
1st Stage	754	917	0	1,671	738	864	0	1,602	-2%	-6%	-4%
2nd Stage	321	403	0	724	301	423	0	724	-6%	5%	0%

Table 1b: Enrollment by Campus, Level, and Gender: General Campus

	Fall 2010				Fall 2011				One-year change		
	Female	Male	Unk	Total	Female	Male	Unk	Total	Female	Male	Total
San Diego	13,683	14,327	0	28,010	13,321	14,157	0	27,478	-3%	-1%	-2%
Undergraduate	12,063	11,581	0	23,644	11,646	11,400	0	23,046	-3%	-2%	-3%
Lower Division	3,860	3,296	0	7,156	3,595	3,059	0	6,654	-7%	-7%	-7%
Upper Division	8,203	8,285	0	16,488	8,051	8,341	0	16,392	-2%	1%	-1%
Graduate	1,620	2,746	0	4,366	1,675	2,757	0	4,432	3%	0%	2%
1st Stage	1,258	2,153	0	3,411	1,315	2,164	0	3,479	5%	1%	2%
2nd Stage	362	593	0	955	360	593	0	953	-1%	0%	0%
Santa Barbara	11,514	10,704	0	22,218	11,137	10,548	0	21,685	-3%	-1%	-2%
Undergraduate	10,126	9,073	0	19,199	9,774	8,862	0	18,636	-3%	-2%	-3%
Lower Division	4,429	3,648	0	8,077	4,166	3,517	0	7,683	-6%	-4%	-5%
Upper Division	5,686	5,423	0	11,109	5,596	5,341	0	10,937	-2%	-2%	-2%
Postbaccalaureate	11	2	0	13	12	4	0	16	9%	100%	23%
Graduate	1,388	1,631	0	3,019	1,363	1,686	0	3,049	-2%	3%	1%
1st Stage	981	1,088	0	2,069	934	1,157	0	2,091	-5%	6%	1%
2nd Stage	407	543	0	950	429	529	0	958	5%	-3%	1%
Santa Cruz	8,902	8,217	68	17,187	9,016	8,375	63	17,454	1%	2%	2%
Undergraduate	8,209	7,392	67	15,668	8,332	7,550	63	15,945	1%	2%	2%
Lower Division	3,596	2,989	0	6,585	3,754	3,083	0	6,837	4%	3%	4%
Upper Division	4,613	4,403	67	9,083	4,578	4,467	63	9,108	-1%	1%	0%
Graduate	693	825	1	1,519	684	825	0	1,509	-1%	0%	-1%
1st Stage	467	604	1	1,072	473	576	0	1,049	1%	-5%	-2%
2nd Stage	226	221	0	447	211	249	0	460	-7%	13%	3%
University Total	112,074	106,952	300	219,326	112,999	108,252	273	221,524	1%	1%	1%
Undergraduate	94,967	83,779	299	179,045	95,903	84,852	273	181,028	1%	1%	1%
Lower Division	36,876	29,833	50	66,759	37,223	30,221	31	67,475	1%	1%	1%
Upper Division	57,834	53,867	249	111,950	58,448	54,552	242	113,242	1%	1%	1%
Postbaccalaureate	257	79	0	336	232	79	0	311	-10%	0%	-7%
Graduate	17,107	23,173	1	40,281	17,096	23,400	0	40,496	0%	1%	1%
1st Stage	13,367	18,241	1	31,609	13,211	18,210	0	31,421	-1%	0%	-1%
2nd Stage	3,740	4,932	0	8,672	3,885	5,190	0	9,075	4%	5%	5%

Table 1c: Enrollment by Campus, Level, and Gender: Health Sciences

	Fall 2010				Fall 2011				One-year change		
	Female	Male	Unk	Total	Female	Male	Unk	Total	Female	Male	Total
Berkeley	614	211	0	825	568	201	0	769	-7%	-5%	-7%
Undergraduate	1	2	0	3	3	3	0	6	200%	50%	100%
Upper Division	1	2	0	3	3	3	0	6	200%	50%	100%
Graduate	609	208	0	817	560	198	0	758	-8%	-5%	-7%
1st Stage	577	191	0	768	527	183	0	710	-9%	-4%	-8%
2nd Stage	32	17	0	49	33	15	0	48	3%	-12%	-2%
Resident	4	1	0	5	5	0	0	5	25%	-100%	0%
Davis	1,429	852	0	2,281	1,446	874	2	2,322	1%	3%	2%
Undergraduate	74	36	0	110	49	32	0	81	-34%	-11%	-26%
Lower Division	74	36	0	110	49	32	0	81	-34%	-11%	-26%
Graduate	881	392	0	1,273	903	415	2	1,320	2%	6%	4%
1st Stage	831	360	0	1,191	851	387	2	1,240	2%	8%	4%
2nd Stage	50	32	0	82	52	28	0	80	4%	-13%	-2%
Resident	474	424	0	898	494	427	0	921	4%	1%	3%
Irvine	802	680	2	1,484	797	686	3	1,486	-1%	1%	0%
Undergraduate	146	20	0	166	139	16	0	155	-5%	-20%	-7%
Lower Division	56	7	0	63	49	3	0	52	-13%	-57%	-17%
Upper Division	90	13	0	103	90	13	0	103	0%	0%	0%
Graduate	330	305	1	636	325	305	1	631	-2%	0%	-1%
1st Stage	291	276	1	568	288	277	1	566	-1%	0%	0%
2nd Stage	39	29	0	68	37	28	0	65	-5%	-3%	-4%
Resident	326	355	1	682	333	365	2	700	2%	3%	3%
Los Angeles	2,380	1,585	0	3,965	2,356	1,617	0	3,973	-1%	2%	0%
Undergraduate	210	28	0	238	206	32	0	238	-2%	14%	0%
Lower Division	91	10	0	101	88	9	0	97	-3%	-10%	-4%
Upper Division	119	18	0	137	118	23	0	141	-1%	28%	3%
Graduate	1,412	879	0	2,291	1,410	921	0	2,331	0%	5%	2%
1st Stage	1,314	821	0	2,135	1,294	856	0	2,150	-2%	4%	1%
2nd Stage	98	58	0	156	116	65	0	181	18%	12%	16%
Resident	758	678	0	1,436	740	664	0	1,404	-2%	-2%	-2%
Riverside	20	38	0	58	24	31	0	55	20%	-18%	-5%
Graduate	20	38	0	58	24	31	0	55	20%	-18%	-5%
1st Stage	20	38	0	58	24	31	0	55	20%	-18%	-5%
San Diego	1,033	856	0	1,889	999	847	0	1,846	-3%	-1%	-2%
Undergraduate	5	14	0	19	0	0	0	0	-100%	-100%	-100%
Lower Division	2	1	0	3	0	0	0	0	-100%	-100%	-100%
Upper Division	3	13	0	16	0	0	0	0	-100%	-100%	-100%
Graduate	675	472	0	1,147	644	471	0	1,115	-5%	0%	-3%
1st Stage	607	422	0	1,029	582	429	0	1,011	-4%	2%	-2%
2nd Stage	68	50	0	118	62	42	0	104	-9%	-16%	-12%
Resident	353	370	0	723	355	376	0	731	1%	2%	1%
San Francisco	2,762	1,874	0	4,636	2,789	1,921	6	4,716	1%	3%	2%
Graduate	1,912	1,112	0	3,024	1,905	1,148	1	3,054	0%	3%	1%
1st Stage	1,703	965	0	2,668	1,732	993	1	2,726	2%	3%	2%
2nd Stage	209	147	0	356	173	155	0	328	-17%	5%	-8%
Resident	850	762	0	1,612	884	773	5	1,662	4%	1%	3%
University Total	9,040	6,096	2	15,138	8,979	6,177	11	15,167	-1%	1%	0%
Undergraduate	436	100	0	536	397	83	0	480	-9%	-17%	-10%
Lower Division	223	54	0	277	186	44	0	230	-17%	-19%	-17%
Upper Division	213	46	0	259	211	39	0	250	-1%	-15%	-3%
Graduate	5,839	3,406	1	9,246	5,771	3,489	4	9,264	-1%	2%	0%
1st Stage	5,343	3,073	1	8,417	5,298	3,156	4	8,458	-1%	3%	0%
2nd Stage	496	333	0	829	473	333	0	806	-5%	0%	-3%
Resident	2,765	2,590	1	5,356	2,811	2,605	7	5,423	2%	1%	1%

Table 2: Enrollment by Campus, Registration Status, and Level

	Undergraduate			Graduate		
	Fall 2010	Fall 2011	One-year change	Fall 2010	Fall 2011	One-year change
Berkeley	25,540	25,885	1%	10,293	10,252	0%
New	6,311	6,792	8%	2,776	2,915	5%
Continuing/Returning	19,229	19,093	-1%	7,517	7,337	-2%
Davis	24,847	25,177	1%	6,545	6,555	0%
New	7,454	7,629	2%	1,622	1,644	1%
Continuing/Returning	17,393	17,548	1%	4,923	4,911	0%
Irvine	22,071	22,106	0%	4,923	5,083	3%
New	6,383	6,942	9%	1,425	1,534	8%
Continuing/Returning	15,688	15,164	-3%	3,498	3,549	1%
Los Angeles	26,162	27,201	4%	11,995	12,070	1%
New	7,865	8,951	14%	3,790	3,875	2%
Continuing/Returning	18,297	18,250	0%	8,205	8,195	0%
Merced	4,138	4,938	19%	243	260	7%
New	1,550	1,618	4%	43	63	47%
Continuing/Returning	2,588	3,320	28%	200	197	-2%
Riverside	18,293	18,574	2%	2,453	2,381	-3%
New	5,692	5,158	-9%	695	667	-4%
Continuing/Returning	12,601	13,416	6%	1,758	1,714	-3%
San Diego	23,663	23,046	-3%	5,513	5,547	1%
New	6,525	6,252	-4%	1,565	1,665	6%
Continuing/Returning	17,138	16,794	-2%	3,948	3,882	-2%
San Francisco	0	0	n/a	3,024	3,054	1%
New	0	0	n/a	832	887	7%
Continuing/Returning	0	0	n/a	2,192	2,167	-1%
Santa Barbara	19,199	18,636	-3%	3,019	3,049	1%
New	5,324	5,526	4%	740	855	16%
Continuing/Returning	13,875	13,110	-6%	2,279	2,194	-4%
Santa Cruz	15,668	15,945	2%	1,519	1,509	-1%
New	4,498	4,808	7%	310	303	-2%
Continuing/Returning	11,170	11,137	0%	1,209	1,206	0%
University Total	179,581	181,508	1%	49,527	49,760	0%
New	51,602	53,676	4%	13,798	14,408	4%
Continuing/Returning	127,979	127,832	0%	35,729	35,352	-1%

Excludes Health Sciences Residents

Figure 3: New Undergraduate Students by Campus, 2007-2011

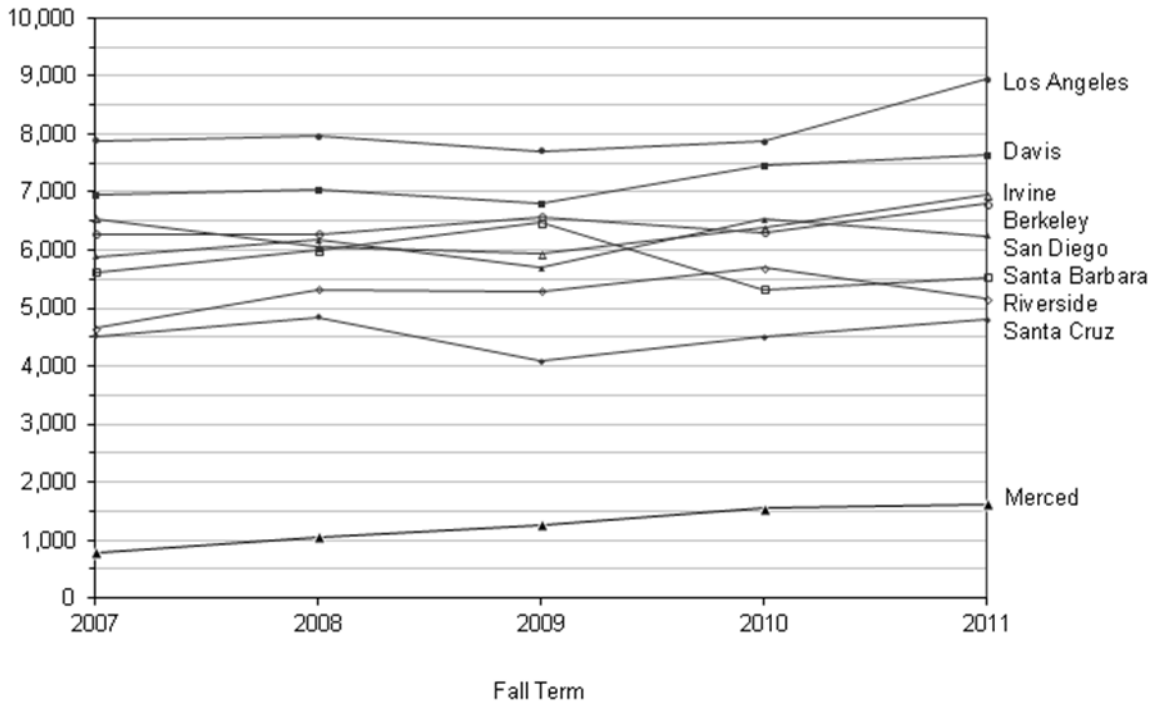


Figure 4: New Graduate Students by Campus, 2007-2011

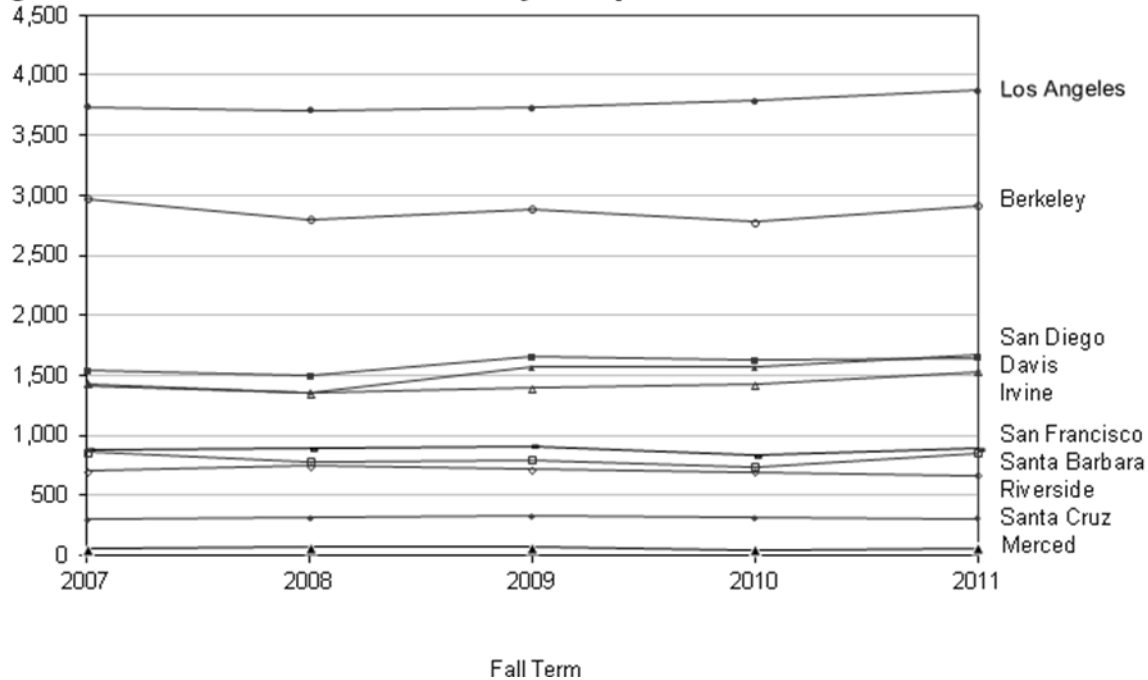


Table 3: General Campus Enrollment by Campus, Full-time/Part-time Status, Gender, and Level

	Undergraduate			Graduate		
	Fall 2010	Fall 2011	One-year change	Fall 2010	Fall 2011	One-year change
University Total	179,045	181,028	1%	40,281	40,496	1%
Full-time	173,115	175,282	1%	38,443	38,669	1%
Female	92,125	93,049	1%	16,541	16,514	0%
Male	80,711	81,977	2%	21,901	22,155	1%
Unknown	279	256	-8%	1	0	-100%
Part-time	5,930	5,746	-3%	1,838	1,827	-1%
Female	2,842	2,854	0%	566	582	3%
Male	3,068	2,875	-6%	1,272	1,245	-2%
Unknown	20	17	-15%	0	0	n/a
Berkeley	25,537	25,879	1%	9,476	9,494	0%
Full-time	24,926	25,132	1%	8,769	8,922	2%
Part-time	611	747	22%	707	572	-19%
Davis	24,737	25,096	1%	5,272	5,235	-1%
Full-time	22,693	23,187	2%	4,764	4,621	-3%
Part-time	2,044	1,909	-7%	508	614	21%
Irvine	21,905	21,951	0%	4,287	4,452	4%
Full-time	21,448	21,547	0%	4,210	4,400	5%
Part-time	457	404	-12%	77	52	-32%
Los Angeles	25,924	26,963	4%	9,704	9,739	0%
Full-time	25,179	26,218	4%	9,376	9,423	1%
Part-time	745	745	0%	328	316	-4%
Merced	4,138	4,938	19%	243	260	7%
Full-time	4,107	4,901	19%	241	259	7%
Part-time	31	37	19%	2	1	-50%
Riverside	18,293	18,574	2%	2,395	2,326	-3%
Full-time	17,852	18,073	1%	2,371	2,301	-3%
Part-time	441	501	14%	24	25	4%
San Diego	23,644	23,046	-3%	4,366	4,432	2%
Full-time	22,899	22,391	-2%	4,267	4,276	0%
Part-time	745	655	-12%	99	156	58%
Santa Barbara	19,199	18,636	-3%	3,019	3,049	1%
Full-time	18,817	18,329	-3%	3,015	3,040	1%
Part-time	382	307	-20%	4	9	125%
Santa Cruz	15,668	15,945	2%	1,519	1,509	-1%
Full-time	15,194	15,504	2%	1,430	1,427	0%
Part-time	474	441	-7%	89	82	-8%

Table 4: General Campus Enrollment by Campus, Discipline, and Level

	Undergraduate			Graduate		
	Fall 2010 Headcount	Fall 2011 Headcount	Fall 2011 Distribution	Fall 2010 Headcount	Fall 2011 Headcount	Fall 2011 Distribution
Berkeley	25,537	25,879	100%	9,476	9,494	100%
Agriculture, Natural Resources & Conservation	765	774	3%	261	253	3%
Architecture & Environmental Design	518	504	2%	352	361	4%
Area, Ethnic, Cultural & Gender Studies	345	362	1%	129	129	1%
Biological Sciences	1,565	1,633	6%	621	596	6%
Business & Management	533	546	2%	1,519	1,516	16%
Communication, Journalism & Related Programs	287	283	1%	95	92	1%
Computer & Information Sciences	120	162	1%	316	325	3%
Education	0	0	0%	368	354	4%
Engineering	3,249	3,364	13%	1,420	1,525	16%
Fine & Applied Arts	363	362	1%	145	153	2%
Foreign Languages & Literature	311	264	1%	374	361	4%
Interdisciplinary Studies	606	629	2%	102	96	1%
Law	126	127	0%	1,083	1,044	11%
Letters	784	755	3%	280	263	3%
Mathematics	260	316	1%	225	225	2%
Multiple Majors	1,553	1,524	6%	144	134	1%
Physical Sciences	705	706	3%	767	802	8%
Psychology	477	529	2%	109	111	1%
Public Administration & Social Services	237	236	1%	372	388	4%
Public Health	281	221	1%	0	0	0%
Social Sciences	2,566	2,678	10%	794	766	8%
Undeclared/Unknown	9,886	9,904	38%	0	0	0%
Davis	24,737	25,096	100%	5,272	5,235	100%
Agriculture, Natural Resources & Conservation	3,411	2,682	11%	346	361	7%
Architecture & Environmental Design	330	315	1%	30	40	1%
Area, Ethnic, Cultural & Gender Studies	216	211	1%	51	53	1%
Biological Sciences	5,950	6,044	24%	721	708	14%
Business & Management	0	752	3%	515	499	10%
Communication, Journalism & Related Programs	466	444	2%	10	10	0%
Computer & Information Sciences	244	309	1%	170	173	3%
Criminology	0	0	0%	75	72	1%
Education	208	172	1%	299	281	5%
Engineering	2,804	2,953	12%	817	812	16%
Family & Consumer Sciences/Human Sciences	512	574	2%	59	58	1%
Fine & Applied Arts	919	864	3%	88	88	2%
Foreign Languages & Literature	363	341	1%	129	128	2%
Health Professions	0	0	0%	26	29	1%
Interdisciplinary Studies	625	641	3%	91	82	2%
Law	0	0	0%	612	619	12%
Letters	930	849	3%	133	129	2%
Mathematics	425	453	2%	143	142	3%
Multiple Majors	939	899	4%	49	61	1%
Physical Sciences	1,122	1,217	5%	449	433	8%
Psychology	1,491	1,508	6%	89	89	2%
Social Sciences	3,769	3,868	15%	369	368	7%
Undeclared/Unknown	13	0	0%	1	0	0%

Table 4: General Campus Enrollment by Campus, Discipline, and Level

	Undergraduate			Graduate		
	Fall 2010 Headcount	Fall 2011 Headcount	Fall 2011 Distribution	Fall 2010 Headcount	Fall 2011 Headcount	Fall 2011 Distribution
Irvine	21,905	21,951	100%	4,287	4,452	100%
Agriculture, Natural Resources & Conservation	16	26	0%	1	1	0%
Architecture & Environmental Design	1	1	0%	92	73	2%
Area, Ethnic, Cultural & Gender Studies	144	118	1%	9	13	0%
Biological Sciences	4,205	4,081	19%	289	292	7%
Business & Management	1,732	1,588	7%	796	790	18%
Communication, Journalism & Related Programs	138	121	1%	0	0	0%
Computer & Information Sciences	668	737	3%	413	497	11%
Education	95	113	1%	167	156	4%
Engineering	2,418	2,585	12%	642	655	15%
Fine & Applied Arts	1,119	1,108	5%	185	174	4%
Foreign Languages & Literature	151	143	1%	131	118	3%
Interdisciplinary Studies	1,442	1,256	6%	42	46	1%
Law	0	0	0%	143	231	5%
Letters	606	526	2%	142	129	3%
Mathematics	339	322	1%	136	150	3%
Multiple Majors	1,405	1,330	6%	3	4	0%
Pharmacy	194	452	2%	0	0	0%
Physical Sciences	645	657	3%	412	406	9%
Psychology	1,814	1,861	8%	102	94	2%
Public Administration & Social Services	0	0	0%	31	52	1%
Public Health	686	716	3%	25	25	1%
Social Sciences	2,890	2,627	12%	526	546	12%
Undeclared/Unknown	1,197	1,583	7%	0	0	0%
Los Angeles	25,924	26,963	100%	9,704	9,739	100%
Agriculture, Natural Resources & Conservation	232	257	1%	0	0	0%
Architecture & Environmental Design	52	43	0%	316	309	3%
Area, Ethnic, Cultural & Gender Studies	608	695	3%	112	99	1%
Biological Sciences	5,216	5,725	21%	441	435	4%
Business & Management	1,140	1,315	5%	1,849	1,895	19%
Computer & Information Sciences	310	348	1%	404	364	4%
Education	0	0	0%	716	730	7%
Engineering	2,966	2,949	11%	1,427	1,523	16%
Fine & Applied Arts	1,454	1,380	5%	630	612	6%
Foreign Languages & Literature	738	744	3%	382	388	4%
Health Professionals	0	1	0%	0	0	0%
Interdisciplinary Studies	651	704	3%	35	35	0%
Law	0	0	0%	1,060	1,068	11%
Letters	1,852	1,900	7%	158	162	2%
Library Science	0	2	0%	142	142	1%
Mathematics	1,078	1,217	5%	245	229	2%
Multiple Majors	325	302	1%	75	67	1%
Physical Sciences	906	1,047	4%	473	486	5%
Psychology	2,415	2,539	9%	196	191	2%
Public Administration & Social Services	0	0	0%	305	308	3%
Social Sciences	5,869	5,673	21%	689	652	7%
Undeclared/Unknown	112	122	0%	49	44	0%

Table 4: General Campus Enrollment by Campus, Discipline, and Level

	Undergraduate			Graduate		
	Fall 2010 Headcount	Fall 2011 Headcount	Fall 2011 Distribution	Fall 2010 Headcount	Fall 2011 Headcount	Fall 2011 Distribution
Merced	4,138	4,938	100%	243	260	100%
Agriculture, Natural Resources & Conservation	0	0	0%	42	41	16%
Biological Sciences	975	1,164	24%	41	45	17%
Business & Management	215	308	6%	0	0	0%
Engineering	653	814	16%	62	59	23%
Foreign Languages & Literature	99	104	2%	0	0	0%
Interdisciplinary Studies	93	115	2%	29	28	11%
Mathematics	76	92	2%	18	16	6%
Multiple Majors	37	46	1%	1	0	0%
Physical Sciences	227	268	5%	31	35	13%
Psychology	463	580	12%	0	11	4%
Social Sciences	472	602	12%	19	25	10%
Undeclared/Unknown	828	845	17%	0	0	0%
Riverside	18,293	18,574	100%	2,395	2,326	100%
Agriculture, Natural Resources & Conservation	186	159	1%	36	36	2%
Area, Ethnic, Cultural & Gender Studies	134	149	1%	9	14	1%
Biological Sciences	3,703	3,365	18%	365	344	15%
Business & Management	2,543	2,571	14%	175	183	8%
Computer & Information Sciences	301	319	2%	143	156	7%
Education	51	52	0%	171	169	7%
Engineering	1,745	1,816	10%	325	303	13%
Fine & Applied Arts	785	870	5%	85	74	3%
Foreign Languages & Literature	263	325	2%	57	51	2%
Interdisciplinary Studies	385	156	1%	0	0	0%
Letters	1,172	1,238	7%	227	226	10%
Mathematics	353	383	2%	109	112	5%
Multiple Majors	333	338	2%	0	0	0%
Physical Sciences	396	383	2%	295	282	12%
Psychology	1,743	1,467	8%	77	76	3%
Public Administration & Social Services	84	116	1%	0	0	0%
Social Sciences	2,472	2,981	16%	321	300	13%
Undeclared/Unknown	1,644	1,886	10%	0	0	0%
San Diego	23,644	23,046	100%	4,366	4,432	100%
Agriculture, Natural Resources & Conservation	267	311	1%	0	0	0%
Area, Ethnic, Cultural & Gender Studies	160	131	1%	55	50	1%
Biological Sciences	5,055	4,312	19%	363	375	8%
Business & Management	798	795	3%	293	291	7%
Communication, Journalism & Related Programs	867	826	4%	56	54	1%
Computer & Information Sciences	684	887	4%	263	266	6%
Education	41	38	0%	163	162	4%
Engineering	3,624	3,812	17%	1,126	1,156	26%
Family & Consumer Sciences/Human Sciences	290	319	1%	0	0	0%
Fine & Applied Arts	681	613	3%	247	252	6%
Foreign Languages & Literature	157	147	1%	29	31	1%
Interdisciplinary Studies	1,445	1,420	6%	47	44	1%
Letters	539	499	2%	156	143	3%
Marine Science	0	0	0%	262	256	6%
Mathematics	496	544	2%	134	134	3%
Multiple Majors	731	694	3%	0	0	0%
Physical Sciences	1,613	1,671	7%	424	417	9%
Psychology	1,521	1,533	7%	61	61	1%
Social Sciences	3,853	3,727	16%	687	740	17%
Undeclared/Unknown	822	767	3%	0	0	0%

Table 4: General Campus Enrollment by Campus, Discipline, and Level

	Undergraduate			Graduate		
	Fall 2010 Headcount	Fall 2011 Headcount	Fall 2011 Distribution	Fall 2010 Headcount	Fall 2011 Headcount	Fall 2011 Distribution
Santa Barbara	19,199	18,636	100%	3,019	3,049	100%
Agriculture, Natural Resources & Conservation	622	671	4%	219	225	7%
Area, Ethnic, Cultural & Gender Studies	211	188	1%	44	53	2%
Biological Sciences	2,498	2,404	13%	165	154	5%
Business & Management	1,573	673	4%	0	0	0%
Communication, Journalism & Related Programs	994	878	5%	39	39	1%
Computer & Information Sciences	322	376	2%	135	150	5%
Education	11	11	0%	315	282	9%
Engineering	881	928	5%	404	429	14%
Fine & Applied Arts	992	857	5%	174	171	6%
Foreign Languages & Literature	443	431	2%	99	105	3%
Interdisciplinary Studies	571	575	3%	69	69	2%
Law	1	0	0%	0	0	0%
Letters	795	712	4%	184	177	6%
Mathematics	414	446	2%	94	101	3%
Multiple Majors	1,252	1,216	7%	36	53	2%
Physical Sciences	727	930	5%	455	445	15%
Psychology	1,848	1,882	10%	141	151	5%
Social Sciences	3,229	3,628	19%	439	445	15%
Undeclared/Unknown	1,815	1,830	10%	7	0	0%
Santa Cruz	15,668	15,945	100%	1,519	1,509	100%
Agriculture, Natural Resources & Conservation	499	540	3%	41	40	3%
Area, Ethnic, Cultural & Gender Studies	279	301	2%	0	0	0%
Biological Sciences	1,395	1,381	9%	168	176	12%
Business & Management	580	555	3%	0	0	0%
Communication, Journalism & Related Programs	0	0	0%	10	10	1%
Computer & Information Sciences	326	372	2%	116	133	9%
Education	3	5	0%	138	120	8%
Engineering	373	425	3%	167	147	10%
Fine & Applied Arts	940	949	6%	64	76	5%
Foreign Languages & Literature	168	190	1%	22	25	2%
Interdisciplinary Studies	3	4	0%	30	30	2%
Law	96	84	1%	0	0	0%
Letters	494	465	3%	83	81	5%
Mathematics	143	143	1%	81	82	5%
Multiple Majors	657	706	4%	0	0	0%
Physical Sciences	375	341	2%	285	283	19%
Psychology	952	713	4%	63	64	4%
Public Administration & Social Services	112	79	0%	0	0	0%
Social Sciences	1,186	1,192	7%	251	241	16%
Undeclared/Unknown	7,087	7,500	47%	0	1	0%

Table 5: Health Sciences Enrollment by Campus, Discipline, and Level

	Undergraduate			Graduate			Resident			Total		
	Fall 2010	Fall 2011	One-year Chge	Fall 2010	Fall 2011	One-year Chge	Fall 2010	Fall 2011	One-year Chge	Fall 2010	Fall 2011	One-year Chge
Berkeley	3	6	100%	817	758	-7%	5	5	0%	825	769	-7%
Biological Sciences	0	0	n/a	123	118	-4%	0	0	n/a	123	118	-4%
Health Professions	0	0	n/a	21	25	19%	0	0	n/a	21	25	19%
Interdisciplinary/Multiple	0	0	n/a	60	51	-15%	0	0	n/a	60	51	-15%
Optometry	0	0	n/a	257	262	2%	5	5	0%	262	267	2%
Physical Sciences	3	6	100%	0	0	n/a	0	0	n/a	3	6	100%
Public Health	0	0	n/a	356	302	-15%	0	0	n/a	356	302	-15%
Davis	110	81	-26%	1,273	1,320	4%	898	921	3%	2,281	2,322	2%
Biological Sciences	0	0	n/a	241	237	-2%	0	0	n/a	241	237	-2%
Health Professions	0	0	n/a	12	17	42%	0	0	n/a	12	17	42%
Interdisciplinary/Multiple	0	0	n/a	33	23	-30%	0	0	n/a	33	23	-30%
Medical Sciences	0	0	n/a	397	407	3%	791	816	3%	1,188	1,223	3%
Nursing	110	81	-26%	33	66	100%	0	0	n/a	143	147	3%
Public Health	0	0	n/a	18	28	56%	0	0	n/a	18	28	56%
Veterinary Medicine	0	0	n/a	539	542	1%	107	105	-2%	646	647	0%
Irvine	166	155	-7%	636	631	-1%	682	700	3%	1,484	1,486	0%
Biological Sciences	0	0	n/a	144	143	-1%	0	0	n/a	144	143	-1%
Health Professions	0	0	n/a	12	11	-8%	0	0	n/a	12	11	-8%
Interdisciplinary/Multiple	0	0	n/a	55	53	-4%	0	0	n/a	55	53	-4%
Medical Sciences	0	0	n/a	399	392	-2%	682	700	3%	1,081	1,092	1%
Nursing	166	155	-7%	26	32	23%	0	0	n/a	192	187	-3%
Los Angeles	238	238	0%	2,291	2,331	2%	1,436	1,404	-2%	3,965	3,973	0%
Agriculture, Nat. Res.	0	0	n/a	18	21	17%	0	0	n/a	18	21	17%
Biological Sciences	0	0	n/a	327	333	2%	0	0	n/a	327	333	2%
Dental Sciences	0	0	n/a	391	410	5%	106	74	-30%	497	484	-3%
Health Professions	0	0	n/a	14	16	14%	0	0	n/a	14	16	14%
Interdisciplinary/Multiple	0	0	n/a	68	60	-12%	0	0	n/a	68	60	-12%
Medical Sciences	0	0	n/a	651	659	1%	1,330	1,330	0%	1,981	1,989	0%
Nursing	238	238	0%	348	352	1%	0	0	n/a	586	590	1%
Public Health	0	0	n/a	474	480	1%	0	0	n/a	474	480	1%
Riverside	0	0	n/a	58	55	-5%	0	0	n/a	58	55	-5%
Engineering	0	0	n/a	4	0	-100%	0	0	n/a	4	0	-100%
Medical Sciences	0	0	n/a	54	55	2%	0	0	n/a	54	55	2%
San Diego	19	0	-100%	1,147	1,115	-3%	723	731	1%	1,889	1,846	-2%
Biological Sciences	0	0	n/a	270	244	-10%	0	0	n/a	270	244	-10%
Health Professions	0	0	n/a	61	60	-2%	0	0	n/a	61	60	-2%
Law	0	0	n/a	32	37	16%	0	0	n/a	32	37	16%
Medical Sciences	0	0	n/a	521	509	-2%	692	702	1%	1,213	1,211	0%
Pharmacy	0	0	n/a	238	240	1%	31	29	-6%	269	269	0%
Physical Sciences	19	0	-100%	0	0	n/a	0	0	n/a	19	0	-100%
Psychology	0	0	n/a	25	24	-4%	0	0	n/a	25	24	-4%
Public Health	0	0	n/a	0	1	n/a	0	0	n/a	0	1	n/a

Table 5: Health Sciences Enrollment by Campus, Discipline, and Level

	Undergraduate			Graduate			Resident			Total		
	Fall 2010	Fall 2011	One-year Chge	Fall 2010	Fall 2011	One-year Chge	Fall 2010	Fall 2011	One-year Chge	Fall 2010	Fall 2011	One-year Chge
San Francisco	0	0	n/a	3,024	3,054	1%	1,612	1,662	3%	4,636	4,716	2%
Biological Sciences	0	0	n/a	458	441	-4%	0	0	n/a	458	441	-4%
Computer & Info Sci.	0	0	n/a	31	38	23%	0	0	n/a	31	38	23%
Dental Sciences	0	0	n/a	440	435	-1%	28	29	4%	468	464	-1%
Engineering	0	0	n/a	59	68	15%	0	0	n/a	59	68	15%
Health Professions	0	0	n/a	109	160	47%	0	0	n/a	109	160	47%
Interdisciplinary/Multiple	0	0	n/a	4	33	725%	0	0	n/a	4	33	725%
Medical Sciences	0	0	n/a	618	634	3%	1,555	1,597	3%	2,173	2,231	3%
Nursing	0	0	n/a	657	599	-9%	0	0	n/a	657	599	-9%
Pharmacy	0	0	n/a	582	572	-2%	29	36	24%	611	608	0%
Public Health	0	0	n/a	30	36	20%	0	0	n/a	30	36	20%
Social Sciences	0	0	n/a	36	38	6%	0	0	n/a	36	38	6%
University Total	536	480	-10%	9,246	9,264	0%	5,356	5,423	1%	15,138	15,167	0%
Agriculture, Nat. Res.	0	0	n/a	18	21	17%	0	0	n/a	18	21	17%
Biological Sciences	0	0	n/a	1,563	1,516	-3%	0	0	n/a	1,563	1,516	-3%
Computer & Info Sci.	0	0	n/a	31	38	23%	0	0	n/a	31	38	23%
Dental Sciences	0	0	n/a	831	845	2%	134	103	-23%	965	948	-2%
Engineering	0	0	n/a	63	68	8%	0	0	n/a	63	68	8%
Health Professions	0	0	n/a	229	289	26%	0	0	n/a	229	289	26%
Interdisciplinary/Multiple	0	0	n/a	220	220	0%	0	0	n/a	220	220	0%
Law	0	0	n/a	32	37	16%	0	0	n/a	32	37	16%
Medical Sciences	0	0	n/a	2,640	2,656	1%	5,050	5,145	2%	7,690	7,801	1%
Nursing	514	474	-8%	1,064	1,049	-1%	0	0	n/a	1,578	1,523	-3%
Optometry	0	0	n/a	257	262	2%	5	5	0%	262	267	2%
Pharmacy	0	0	n/a	820	812	-1%	60	65	8%	880	877	0%
Physical Sciences	22	6	-73%	0	0	n/a	0	0	n/a	22	6	-73%
Psychology	0	0	n/a	25	24	-4%	0	0	n/a	25	24	-4%
Public Health	0	0	n/a	878	847	-4%	0	0	n/a	878	847	-4%
Social Sciences	0	0	n/a	36	38	6%	0	0	n/a	36	38	6%
Veterinary Medicine	0	0	n/a	539	542	1%	107	105	-2%	646	647	0%

Table 6: Enrollment by Campus, Residency Status, and Level

	Fall 2010			Fall 2011			One-year change		
	Ug	Gr	Total	Ug	Gr	Total	Ug	Gr	Total
Berkeley	25,540	9,184	34,724	25,885	9,136	35,021	1%	-1%	1%
California Resident	21,989	6,467	28,456	21,216	6,222	27,438	-4%	-4%	-4%
Non-Resident Domestic	1,836	1,106	2,942	2,374	1,214	3,588	29%	10%	22%
Non-Resident International	1,715	1,611	3,326	2,295	1,700	3,995	34%	6%	20%
Davis	24,847	6,029	30,876	25,177	6,037	31,214	1%	0%	1%
California Resident	23,768	4,698	28,466	23,818	4,628	28,446	0%	-1%	0%
Non-Resident Domestic	553	438	991	639	494	1,133	16%	13%	14%
Non-Resident International	526	893	1,419	720	915	1,635	37%	2%	15%
Irvine	22,071	4,267	26,338	22,106	4,432	26,538	0%	4%	1%
California Resident	21,085	3,067	24,152	20,887	3,078	23,965	-1%	0%	-1%
Non-Resident Domestic	435	263	698	464	294	758	7%	12%	9%
Non-Resident International	551	937	1,488	755	1,060	1,815	37%	13%	22%
Los Angeles	26,162	10,378	36,540	27,201	10,426	37,627	4%	0%	3%
California Resident	22,869	7,508	30,377	23,348	7,460	30,808	2%	-1%	1%
Non-Resident Domestic	1,775	1,083	2,858	1,842	1,070	2,912	4%	-1%	2%
Non-Resident International	1,518	1,787	3,305	2,011	1,896	3,907	32%	6%	18%
Merced	4,138	243	4,381	4,938	260	5,198	19%	7%	19%
California Resident	4,072	158	4,230	4,867	168	5,035	20%	6%	19%
Non-Resident Domestic	25	11	36	26	10	36	4%	-9%	0%
Non-Resident International	41	74	115	45	82	127	10%	11%	10%
Riverside	18,293	2,378	20,671	18,574	2,301	20,875	2%	-3%	1%
California Resident	17,830	1,567	19,397	18,059	1,499	19,558	1%	-4%	1%
Non-Resident Domestic	269	114	383	269	121	390	0%	6%	2%
Non-Resident International	194	697	891	246	681	927	27%	-2%	4%
San Diego	23,644	5,228	28,872	23,046	5,148	28,194	-3%	-2%	-2%
California Resident	21,895	3,739	25,634	20,858	3,608	24,466	-5%	-4%	-5%
Non-Resident Domestic	742	396	1,138	822	413	1,235	11%	4%	9%
Non-Resident International	1,007	1,093	2,100	1,366	1,127	2,493	36%	3%	19%
San Francisco	0	2,760	2,760	0	2,773	2,773	n/a	0%	0%
California Resident	0	2,525	2,525	0	2,518	2,518	n/a	0%	0%
Non-Resident Domestic	0	147	147	0	178	178	n/a	21%	21%
Non-Resident International	0	88	88	0	77	77	n/a	-13%	-13%
Santa Barbara	19,199	3,019	22,218	18,636	3,049	21,685	-3%	1%	-2%
California Resident	18,293	2,242	20,535	17,615	2,205	19,820	-4%	-2%	-3%
Non-Resident Domestic	654	232	886	691	262	953	6%	13%	8%
Non-Resident International	252	545	797	330	582	912	31%	7%	14%
Santa Cruz	15,668	1,507	17,175	15,945	1,501	17,446	2%	0%	2%
California Resident	15,317	1,199	16,516	15,597	1,186	16,783	2%	-1%	2%
Non-Resident Domestic	310	103	413	308	109	417	-1%	6%	1%
Non-Resident International	41	205	246	40	206	246	-2%	0%	0%
University Total	179,562	44,993	224,555	181,508	45,063	226,571	1%	0%	1%
California Resident	167,118	33,170	200,288	166,265	32,572	198,837	-1%	-2%	-1%
Non-Resident Domestic	6,599	3,893	10,492	7,435	4,165	11,600	13%	7%	11%
Non-Resident International	5,845	7,930	13,775	7,808	8,326	16,134	34%	5%	17%

Excludes Health Sciences Residents and students in self-supporting programs.

Table 7a: Enrollment by Ethnicity, Gender, and Level: Berkeley

	Fall 2010			Fall 2011			One-year change		
	Ug	Gr	Total	Ug	Gr	Total	Ug	Gr	Total
International	1,844	1,912	3,756	2,423	2,015	4,438	31%	5%	18%
Female	887	562	1,449	1,155	619	1,774	30%	10%	22%
Male	957	1,350	2,307	1,268	1,396	2,664	32%	3%	15%
Unknown	0	0	0	0	0	0			
American Indian	145	94	239	168	90	258	16%	-4%	8%
Female	82	43	125	93	39	132	13%	-9%	6%
Male	63	51	114	75	51	126	19%	0%	11%
Unknown	0	0	0	0	0	0			
African American	874	326	1,200	889	352	1,241	2%	8%	3%
Female	538	196	734	540	206	746	0%	5%	2%
Male	336	130	466	349	146	495	4%	12%	6%
Unknown	0	0	0	0	0	0			
Chicano/Chicana	2,166	394	2,560	2,228	387	2,615	3%	-2%	2%
Female	1,265	202	1,467	1,302	196	1,498	3%	-3%	2%
Male	901	192	1,093	926	191	1,117	3%	-1%	2%
Unknown	0	0	0	0	0	0			
Latino/Latina	844	352	1,196	902	360	1,262	7%	2%	6%
Female	450	185	635	499	183	682	11%	-1%	7%
Male	394	167	561	403	177	580	2%	6%	3%
Unknown	0	0	0	0	0	0			
Filipino/Pilipino	824	118	942	754	124	878	-8%	5%	-7%
Female	496	71	567	456	71	527	-8%	0%	-7%
Male	328	47	375	298	53	351	-9%	13%	-6%
Unknown	0	0	0	0	0	0			
Chinese	5,079	764	5,843	4,951	773	5,724	-3%	1%	-2%
Female	2,657	404	3,061	2,544	410	2,954	-4%	1%	-3%
Male	2,422	360	2,782	2,407	363	2,770	-1%	1%	0%
Unknown	0	0	0	0	0	0			
Japanese	423	111	534	433	112	545	2%	1%	2%
Female	216	54	270	227	59	286	5%	9%	6%
Male	207	57	264	206	53	259	0%	-7%	-2%
Unknown	0	0	0	0	0	0			
Korean	1,205	176	1,381	1,236	160	1,396	3%	-9%	1%
Female	627	97	724	634	88	722	1%	-9%	0%
Male	578	79	657	602	72	674	4%	-9%	3%
Unknown	0	0	0	0	0	0			
Other Asian	1,442	259	1,701	1,393	276	1,669	-3%	7%	-2%
Female	844	153	997	818	169	987	-3%	10%	-1%
Male	598	106	704	575	107	682	-4%	1%	-3%
Unknown	0	0	0	0	0	0			
Pakistani/East Indian	1,143	403	1,546	1,267	393	1,660	11%	-2%	7%
Female	561	145	706	625	139	764	11%	-4%	8%
Male	582	258	840	642	254	896	10%	-2%	7%
Unknown	0	0	0	0	0	0			
White	7,730	4,122	11,852	7,732	4,056	11,788	0%	-2%	-1%
Female	3,915	1,896	5,811	3,958	1,875	5,833	1%	-1%	0%
Male	3,815	2,226	6,041	3,774	2,181	5,955	-1%	-2%	-1%
Unknown	0	0	0	0	0	0			
Not Stated/Unknown	1,821	1,267	3,088	1,509	1,159	2,668	-17%	-9%	-14%
Female	975	606	1,581	809	531	1,340	-17%	-12%	-15%
Male	846	661	1,507	700	628	1,328	-17%	-5%	-12%
Unknown	0	0	0	0	0	0			
Campus Total	25,540	10,298	35,838	25,885	10,257	36,142	1%	0%	1%
Female	13,513	4,614	18,127	13,660	4,585	18,245	1%	-1%	1%
Male	12,027	5,684	17,711	12,225	5,672	17,897	2%	0%	1%
Unknown	0	0	0	0	0	0			

Graduate student headcounts include Health Sciences Residents.

Table 7b: Enrollment by Ethnicity, Gender, and Level: Davis

	Fall 2010			Fall 2011			One-year change		
	Ug	Gr	Total	Ug	Gr	Total	Ug	Gr	Total
International	623	1,033	1,656	802	1,032	1,834	29%	0%	11%
Female	320	416	736	403	425	828	26%	2%	13%
Male	303	617	920	399	607	1,006	32%	-2%	9%
Unknown	0	0	0	0	0	0			
American Indian	205	63	268	200	75	275	-2%	19%	3%
Female	125	30	155	122	42	164	-2%	40%	6%
Male	80	33	113	78	33	111	-3%	0%	-2%
Unknown	0	0	0	0	0	0			
African American	759	156	915	762	158	920	0%	1%	1%
Female	441	96	537	450	90	540	2%	-6%	1%
Male	318	60	378	312	68	380	-2%	13%	1%
Unknown	0	0	0	0	0	0			
Chicano/Chicana	2,807	284	3,091	3,051	325	3,376	9%	14%	9%
Female	1,699	157	1,856	1,805	185	1,990	6%	18%	7%
Male	1,108	127	1,235	1,246	140	1,386	12%	10%	12%
Unknown	0	0	0	0	0	0			
Latino/Latina	869	211	1,080	904	220	1,124	4%	4%	4%
Female	497	120	617	500	124	624	1%	3%	1%
Male	372	91	463	404	96	500	9%	5%	8%
Unknown	0	0	0	0	0	0			
Filipino/Pilipino	991	110	1,101	965	121	1,086	-3%	10%	-1%
Female	549	60	609	529	67	596	-4%	12%	-2%
Male	442	50	492	436	54	490	-1%	8%	0%
Unknown	0	0	0	0	0	0			
Chinese	4,227	505	4,732	4,294	499	4,793	2%	-1%	1%
Female	2,217	266	2,483	2,250	261	2,511	1%	-2%	1%
Male	2,010	239	2,249	2,044	238	2,282	2%	0%	1%
Unknown	0	0	0	0	0	0			
Japanese	397	80	477	422	98	520	6%	23%	9%
Female	217	46	263	242	53	295	12%	15%	12%
Male	180	34	214	180	45	225	0%	32%	5%
Unknown	0	0	0	0	0	0			
Korean	633	94	727	681	93	774	8%	-1%	6%
Female	328	55	383	342	49	391	4%	-11%	2%
Male	305	39	344	339	44	383	11%	13%	11%
Unknown	0	0	0	0	0	0			
Other Asian	2,353	284	2,637	2,365	266	2,631	1%	-6%	0%
Female	1,347	158	1,505	1,384	154	1,538	3%	-3%	2%
Male	1,006	126	1,132	981	112	1,093	-2%	-11%	-3%
Unknown	0	0	0	0	0	0			
Pakistani/East Indian	1,117	247	1,364	1,227	247	1,474	10%	0%	8%
Female	616	122	738	683	123	806	11%	1%	9%
Male	501	125	626	544	124	668	9%	-1%	7%
Unknown	0	0	0	0	0	0			
White	8,523	3,477	12,000	8,345	3,489	11,834	-2%	0%	-1%
Female	4,705	1,824	6,529	4,545	1,834	6,379	-3%	1%	-2%
Male	3,818	1,653	5,471	3,800	1,654	5,454	0%	0%	0%
Unknown	0	0	0	0	1	1			
Not Stated/Unknown	1,343	899	2,242	1,159	853	2,012	-14%	-5%	-10%
Female	705	421	1,126	608	381	989	-14%	-10%	-12%
Male	638	478	1,116	551	471	1,022	-14%	-1%	-8%
Unknown	0	0	0	0	1	1			
Campus Total	24,847	7,443	32,290	25,177	7,476	32,653	1%	0%	1%
Female	13,766	3,771	17,537	13,863	3,788	17,651	1%	0%	1%
Male	11,081	3,672	14,753	11,314	3,686	15,000	2%	0%	2%
Unknown	0	0	0	0	2	2			

Graduate student headcounts include Health Sciences Residents.

Table 7c: Enrollment by Ethnicity, Gender, and Level: Irvine

	Fall 2010			Fall 2011			One-year change		
	Ug	Gr	Total	Ug	Gr	Total	Ug	Gr	Total
International	603	980	1,583	791	1,101	1,892	31%	12%	20%
Female	290	303	593	385	340	725	33%	12%	22%
Male	310	677	987	404	761	1,165	30%	12%	18%
Unknown	3	0	3	2	0	2			
American Indian	108	35	143	110	42	152	2%	20%	6%
Female	65	18	83	69	19	88	6%	6%	6%
Male	43	17	60	41	23	64	-5%	35%	7%
Unknown	0	0	0	0	0	0			
African American	522	76	598	559	92	651	7%	21%	9%
Female	301	33	334	332	47	379	10%	42%	13%
Male	221	43	264	227	45	272	3%	5%	3%
Unknown	0	0	0	0	0	0			
Chicano/Chicana	2,520	223	2,743	2,996	280	3,276	19%	26%	19%
Female	1,418	117	1,535	1,688	150	1,838	19%	28%	20%
Male	1,101	106	1,207	1,306	130	1,436	19%	23%	19%
Unknown	1	0	1	2	0	2			
Latino/Latina	849	139	988	929	128	1,057	9%	-8%	7%
Female	491	65	556	536	57	593	9%	-12%	7%
Male	358	74	432	393	71	464	10%	-4%	7%
Unknown	0	0	0	0	0	0			
Filipino/Pilipino	1,639	64	1,703	1,687	94	1,781	3%	47%	5%
Female	907	29	936	963	40	1,003	6%	38%	7%
Male	732	35	767	724	54	778	-1%	54%	1%
Unknown	0	0	0	0	0	0			
Chinese	3,909	407	4,316	3,769	488	4,257	-4%	20%	-1%
Female	2,035	166	2,201	1,993	216	2,209	-2%	30%	0%
Male	1,870	241	2,111	1,773	272	2,045	-5%	13%	-3%
Unknown	4	0	4	3	0	3			
Japanese	584	71	655	573	63	636	-2%	-11%	-3%
Female	336	33	369	316	28	344	-6%	-15%	-7%
Male	247	38	285	256	35	291	4%	-8%	2%
Unknown	1	0	1	1	0	1			
Korean	1,400	110	1,510	1,320	106	1,426	-6%	-4%	-6%
Female	754	50	804	716	45	761	-5%	-10%	-5%
Male	645	60	705	604	61	665	-6%	2%	-6%
Unknown	1	0	1	0	0	0			
Other Asian	2,930	193	3,123	2,983	295	3,278	2%	53%	5%
Female	1,614	89	1,703	1,626	134	1,760	1%	51%	3%
Male	1,314	104	1,418	1,355	161	1,516	3%	55%	7%
Unknown	2	0	2	2	0	2			
Pakistani/East Indian	995	146	1,141	985	208	1,193	-1%	42%	5%
Female	539	55	594	546	84	630	1%	53%	6%
Male	455	91	546	438	124	562	-4%	36%	3%
Unknown	1	0	1	1	0	1			
White	4,793	1,888	6,681	4,480	1,854	6,334	-7%	-2%	-5%
Female	2,516	796	3,312	2,409	758	3,167	-4%	-5%	-4%
Male	2,275	1,092	3,367	2,066	1,096	3,162	-9%	0%	-6%
Unknown	2	0	2	5	0	5			
Not Stated/Unknown	1,219	1,273	2,492	924	1,032	1,956	-24%	-19%	-22%
Female	571	590	1,161	434	461	895	-24%	-22%	-23%
Male	520	681	1,201	388	568	956	-25%	-17%	-20%
Unknown	128	2	130	102	3	105			
Campus Total	22,071	5,605	27,676	22,106	5,783	27,889	0%	3%	1%
Female	11,837	2,344	14,181	12,013	2,379	14,392	1%	1%	1%
Male	10,091	3,259	13,350	9,975	3,401	13,376	-1%	4%	0%
Unknown	143	2	145	118	3	121			

Graduate student headcounts include Health Sciences Residents.

Table 7d: Enrollment by Ethnicity, Gender, and Level: Los Angeles

	Fall 2010			Fall 2011			One-year change		
	Ug	Gr	Total	Ug	Gr	Total	Ug	Gr	Total
International	1,522	2,079	3,601	2,014	2,205	4,219	32%	6%	17%
Female	710	741	1,451	922	772	1,694	30%	4%	17%
Male	812	1,338	2,150	1,092	1,433	2,525	34%	7%	17%
Unknown	0	0	0	0	0	0			
American Indian	128	58	186	144	65	209	13%	12%	12%
Female	75	30	105	80	31	111	7%	3%	6%
Male	53	28	81	64	34	98	21%	21%	21%
Unknown	0	0	0	0	0	0			
African American	1,076	489	1,565	1,099	516	1,615	2%	6%	3%
Female	659	310	969	689	332	1,021	5%	7%	5%
Male	417	179	596	410	184	594	-2%	3%	0%
Unknown	0	0	0	0	0	0			
Chicano/Chicana	3,008	636	3,644	3,324	720	4,044	11%	13%	11%
Female	1,857	373	2,230	2,034	413	2,447	10%	11%	10%
Male	1,151	263	1,414	1,290	307	1,597	12%	17%	13%
Unknown	0	0	0	0	0	0			
Latino/Latina	1,118	443	1,561	1,179	424	1,603	5%	-4%	3%
Female	663	254	917	701	238	939	6%	-6%	2%
Male	455	189	644	478	186	664	5%	-2%	3%
Unknown	0	0	0	0	0	0			
Filipino/Pilipino	1,069	198	1,267	1,081	207	1,288	1%	5%	2%
Female	644	112	756	643	114	757	0%	2%	0%
Male	425	86	511	438	93	531	3%	8%	4%
Unknown	0	0	0	0	0	0			
Chinese	3,962	1,137	5,099	4,019	1,146	5,165	1%	1%	1%
Female	2,034	537	2,571	2,073	535	2,608	2%	0%	1%
Male	1,928	600	2,528	1,946	611	2,557	1%	2%	1%
Unknown	0	0	0	0	0	0			
Japanese	582	191	773	620	205	825	7%	7%	7%
Female	306	86	392	349	99	448	14%	15%	14%
Male	276	105	381	271	106	377	-2%	1%	-1%
Unknown	0	0	0	0	0	0			
Korean	1,390	368	1,758	1,407	383	1,790	1%	4%	2%
Female	757	202	959	755	199	954	0%	-1%	-1%
Male	633	166	799	652	184	836	3%	11%	5%
Unknown	0	0	0	0	0	0			
Other Asian	1,804	556	2,360	1,806	661	2,467	0%	19%	5%
Female	1,019	289	1,308	1,029	337	1,366	1%	17%	4%
Male	785	267	1,052	777	324	1,101	-1%	21%	5%
Unknown	0	0	0	0	0	0			
Pakistani/East Indian	905	471	1,376	1,008	487	1,495	11%	3%	9%
Female	451	180	631	514	187	701	14%	4%	11%
Male	454	291	745	494	300	794	9%	3%	7%
Unknown	0	0	0	0	0	0			
White	8,467	5,170	13,637	8,487	5,204	13,691	0%	1%	0%
Female	4,631	2,392	7,023	4,603	2,413	7,016	-1%	1%	0%
Male	3,836	2,778	6,614	3,884	2,791	6,675	1%	0%	1%
Unknown	0	0	0	0	0	0			
Not Stated/Unknown	1,131	1,635	2,766	1,013	1,251	2,264	-10%	-23%	-18%
Female	592	797	1,389	521	592	1,113	-12%	-26%	-20%
Male	539	838	1,377	492	659	1,151	-9%	-21%	-16%
Unknown	0	0	0	0	0	0			
Campus Total	26,162	13,431	39,593	27,201	13,474	40,675	4%	0%	3%
Female	14,398	6,303	20,701	14,913	6,262	21,175	4%	-1%	2%
Male	11,764	7,128	18,892	12,288	7,212	19,500	4%	1%	3%
Unknown	0	0	0	0	0	0			

Graduate student headcounts include Health Sciences Residents.

Table 7e: Enrollment by Ethnicity, Gender, and Level: Merced

	Fall 2010			Fall 2011			One-year change		
	Ug	Gr	Total	Ug	Gr	Total	Ug	Gr	Total
International	46	74	120	48	83	131	4%	12%	9%
Female	18	23	41	19	22	41	6%	-4%	0%
Male	27	51	78	28	61	89	4%	20%	14%
Unknown	1	0	1	1	0	1			
American Indian	28	2	30	32	4	36	14%	100%	20%
Female	13	1	14	17	2	19	31%	100%	36%
Male	15	1	16	14	2	16	-7%	100%	0%
Unknown	0	0	0	1	0	1			
African American	305	6	311	407	8	415	33%	33%	33%
Female	189	2	191	248	4	252	31%	100%	32%
Male	116	4	120	159	4	163	37%	0%	36%
Unknown	0	0	0	0	0	0			
Chicano/Chicana	1,207	23	1,230	1,495	27	1,522	24%	17%	24%
Female	680	9	689	841	11	852	24%	22%	24%
Male	526	14	540	652	16	668	24%	14%	24%
Unknown	1	0	1	2	0	2			
Latino/Latina	226	4	230	290	6	296	28%	50%	29%
Female	123	1	124	160	2	162	30%	100%	31%
Male	103	3	106	130	4	134	26%	33%	26%
Unknown	0	0	0	0	0	0			
Filipino/Pilipino	264	2	266	338	1	339	28%	-50%	27%
Female	132	1	133	163	1	164	23%	0%	23%
Male	132	1	133	175	0	175	33%	-100%	32%
Unknown	0	0	0	0	0	0			
Chinese	396	9	405	454	9	463	15%	0%	14%
Female	154	2	156	181	2	183	18%	0%	17%
Male	242	7	249	273	7	280	13%	0%	12%
Unknown	0	0	0	0	0	0			
Japanese	46	2	48	55	2	57	20%	0%	19%
Female	18	1	19	22	2	24	22%	100%	26%
Male	28	1	29	33	0	33	18%	-100%	14%
Unknown	0	0	0	0	0	0			
Korean	74	2	76	76	1	77	3%	-50%	1%
Female	29	0	29	31	0	31	7%	n/a	7%
Male	44	2	46	44	1	45	0%	-50%	-2%
Unknown	1	0	1	1	0	1			
Other Asian	370	6	376	431	8	439	16%	33%	17%
Female	185	0	185	218	1	219	18%	n/a	18%
Male	184	6	190	213	7	220	16%	17%	16%
Unknown	1	0	1	0	0	0			
Pakistani/East Indian	150	3	153	205	2	207	37%	-33%	35%
Female	80	0	80	104	0	104	30%	n/a	30%
Male	70	3	73	101	2	103	44%	-33%	41%
Unknown	0	0	0	0	0	0			
White	856	91	947	949	95	1,044	11%	4%	10%
Female	350	45	395	391	40	431	12%	-11%	9%
Male	505	46	551	552	55	607	9%	20%	10%
Unknown	1	0	1	6	0	6			
Not Stated/Unknown	170	19	189	158	14	172	-7%	-26%	-9%
Female	63	8	71	62	4	66	-2%	-50%	-7%
Male	82	11	93	73	10	83	-11%	-9%	-11%
Unknown	25	0	25	23	0	23			
Campus Total	4,138	243	4,381	4,938	260	5,198	19%	7%	19%
Female	2,034	93	2,127	2,457	91	2,548	21%	-2%	20%
Male	2,074	150	2,224	2,447	169	2,616	18%	13%	18%
Unknown	30	0	30	34	0	34			

Graduate student headcounts include Health Sciences Residents.

Table 7f: Enrollment by Ethnicity, Gender, and Level: Riverside

	Fall 2010			Fall 2011			One-year change		
	Ug	Gr	Total	Ug	Gr	Total	Ug	Gr	Total
International	261	704	965	294	685	979	13%	-3%	1%
Female	106	299	405	116	286	402	9%	-4%	-1%
Male	154	405	559	176	399	575	14%	-1%	3%
Unknown	1	0	1	2	0	2			
American Indian	76	12	88	78	22	100	3%	83%	14%
Female	39	9	48	37	14	51	-5%	56%	6%
Male	37	3	40	41	8	49	11%	167%	23%
Unknown	0	0	0	0	0	0			
African American	1,432	76	1,508	1,367	63	1,430	-5%	-17%	-5%
Female	918	34	952	890	31	921	-3%	-9%	-3%
Male	514	42	556	475	32	507	-8%	-24%	-9%
Unknown	0	0	0	2	0	2			
Chicano/Chicana	4,462	143	4,605	4,930	149	5,079	10%	4%	10%
Female	2,675	74	2,749	2,970	75	3,045	11%	1%	11%
Male	1,785	69	1,854	1,957	74	2,031	10%	7%	10%
Unknown	2	0	2	3	0	3			
Latino/Latina	1,146	63	1,209	1,194	85	1,279	4%	35%	6%
Female	669	28	697	686	39	725	3%	39%	4%
Male	477	35	512	508	46	554	6%	31%	8%
Unknown	0	0	0	0	0	0			
Filipino/Pilipino	1,030	37	1,067	968	36	1,004	-6%	-3%	-6%
Female	523	14	537	494	13	507	-6%	-7%	-6%
Male	507	23	530	473	23	496	-7%	0%	-6%
Unknown	0	0	0	1	0	1			
Chinese	2,607	86	2,693	2,634	93	2,727	1%	8%	1%
Female	1,175	36	1,211	1,176	41	1,217	0%	14%	0%
Male	1,431	50	1,481	1,457	52	1,509	2%	4%	2%
Unknown	1	0	1	1	0	1			
Japanese	211	17	228	227	24	251	8%	41%	10%
Female	96	6	102	96	13	109	0%	117%	7%
Male	115	11	126	131	11	142	14%	0%	13%
Unknown	0	0	0	0	0	0			
Korean	1,012	32	1,044	994	30	1,024	-2%	-6%	-2%
Female	438	14	452	429	12	441	-2%	-14%	-2%
Male	574	18	592	565	18	583	-2%	0%	-2%
Unknown	0	0	0	0	0	0			
Other Asian	1,744	66	1,810	1,688	77	1,765	-3%	17%	-2%
Female	846	33	879	822	39	861	-3%	18%	-2%
Male	898	33	931	866	38	904	-4%	15%	-3%
Unknown	0	0	0	0	0	0			
Pakistani/East Indian	620	40	660	684	31	715	10%	-23%	8%
Female	273	20	293	310	18	328	14%	-10%	12%
Male	347	20	367	374	13	387	8%	-35%	5%
Unknown	0	0	0	0	0	0			
White	2,935	866	3,801	2,884	868	3,752	-2%	0%	-1%
Female	1,372	371	1,743	1,342	375	1,717	-2%	1%	-1%
Male	1,562	495	2,057	1,538	493	2,031	-2%	0%	-1%
Unknown	1	0	1	4	0	4			
Not Stated/Unknown	757	311	1,068	632	218	850	-17%	-30%	-20%
Female	322	157	479	274	107	381	-15%	-32%	-20%
Male	381	154	535	313	111	424	-18%	-28%	-21%
Unknown	54	0	54	45	0	45			
Campus Total	18,293	2,453	20,746	18,574	2,381	20,955	2%	-3%	1%
Female	9,452	1,095	10,547	9,642	1,063	10,705	2%	-3%	1%
Male	8,782	1,358	10,140	8,874	1,318	10,192	1%	-3%	1%
Unknown	59	0	59	58	0	58			

Graduate student headcounts include Health Sciences Residents.

Table 7g: Enrollment by Ethnicity, Gender, and Level: San Diego

	Fall 2010			Fall 2011			One-year change		
	Ug	Gr	Total	Ug	Gr	Total	Ug	Gr	Total
International	1,075	1,147	2,222	1,421	1,196	2,617	32%	4%	18%
Female	507	338	845	661	354	1,015	30%	5%	20%
Male	568	809	1,377	760	842	1,602	34%	4%	16%
Unknown	0	0	0	0	0	0			
American Indian	117	52	169	112	46	158	-4%	-12%	-7%
Female	54	24	78	60	21	81	11%	-13%	4%
Male	63	28	91	52	25	77	-17%	-11%	-15%
Unknown	0	0	0	0	0	0			
African American	419	108	527	444	144	588	6%	33%	12%
Female	241	61	302	255	82	337	6%	34%	12%
Male	178	47	225	189	62	251	6%	32%	12%
Unknown	0	0	0	0	0	0			
Chicano/Chicana	2,536	255	2,791	2,776	297	3,073	9%	16%	10%
Female	1,408	124	1,532	1,530	142	1,672	9%	15%	9%
Male	1,128	131	1,259	1,246	155	1,401	10%	18%	11%
Unknown	0	0	0	0	0	0			
Latino/Latina	687	160	847	773	153	926	13%	-4%	9%
Female	370	83	453	415	77	492	12%	-7%	9%
Male	317	77	394	358	76	434	13%	-1%	10%
Unknown	0	0	0	0	0	0			
Filipino/Pilipino	981	75	1,056	1,000	91	1,091	2%	21%	3%
Female	488	40	528	508	46	554	4%	15%	5%
Male	493	35	528	492	45	537	0%	29%	2%
Unknown	0	0	0	0	0	0			
Chinese	4,934	562	5,496	4,579	548	5,127	-7%	-2%	-7%
Female	2,507	279	2,786	2,340	276	2,616	-7%	-1%	-6%
Male	2,427	283	2,710	2,239	272	2,511	-8%	-4%	-7%
Unknown	0	0	0	0	0	0			
Japanese	465	78	543	429	89	518	-8%	14%	-5%
Female	227	28	255	210	38	248	-7%	36%	-3%
Male	238	50	288	219	51	270	-8%	2%	-6%
Unknown	0	0	0	0	0	0			
Korean	2,070	117	2,187	1,801	113	1,914	-13%	-3%	-12%
Female	1,073	67	1,140	900	57	957	-16%	-15%	-16%
Male	997	50	1,047	901	56	957	-10%	12%	-9%
Unknown	0	0	0	0	0	0			
Other Asian	2,192	246	2,438	2,101	245	2,346	-4%	0%	-4%
Female	1,230	128	1,358	1,181	130	1,311	-4%	2%	-3%
Male	962	118	1,080	920	115	1,035	-4%	-3%	-4%
Unknown	0	0	0	0	0	0			
Pakistani/East Indian	821	191	1,012	873	207	1,080	6%	8%	7%
Female	408	77	485	427	80	507	5%	4%	5%
Male	413	114	527	446	127	573	8%	11%	9%
Unknown	0	0	0	0	0	0			
White	5,853	2,695	8,548	5,556	2,639	8,195	-5%	-2%	-4%
Female	2,814	1,131	3,945	2,597	1,124	3,721	-8%	-1%	-6%
Male	3,039	1,564	4,603	2,959	1,515	4,474	-3%	-3%	-3%
Unknown	0	0	0	0	0	0			
Not Stated/Unknown	1,513	550	2,063	1,181	510	1,691	-22%	-7%	-18%
Female	741	268	1,009	562	247	809	-24%	-8%	-20%
Male	772	282	1,054	619	263	882	-20%	-7%	-16%
Unknown	0	0	0	0	0	0			
Campus Total	23,663	6,236	29,899	23,046	6,278	29,324	-3%	1%	-2%
Female	12,068	2,648	14,716	11,646	2,674	14,320	-3%	1%	-3%
Male	11,595	3,588	15,183	11,400	3,604	15,004	-2%	0%	-1%
Unknown	0	0	0	0	0	0			

Graduate student headcounts include Health Sciences Residents.

Table 7h: Enrollment by Ethnicity, Gender, and Level: San Francisco

	Fall 2010			Fall 2011			One-year change		
	Ug	Gr	Total	Ug	Gr	Total	Ug	Gr	Total
International	0	166	166	0	157	157	n/a	-5%	-5%
Female	0	100	100	0	94	94	n/a	-6%	-6%
Male	0	66	66	0	62	62	n/a	-6%	-6%
Unknown	0	0	0	0	1	1			
American Indian	0	29	29	0	33	33	n/a	14%	14%
Female	0	18	18	0	24	24	n/a	33%	33%
Male	0	11	11	0	9	9	n/a	-18%	-18%
Unknown	0	0	0	0	0	0			
African American	0	177	177	0	191	191	n/a	8%	8%
Female	0	116	116	0	120	120	n/a	3%	3%
Male	0	61	61	0	71	71	n/a	16%	16%
Unknown	0	0	0	0	0	0			
Chicano/Chicana	0	205	205	0	163	163	n/a	-20%	-20%
Female	0	106	106	0	89	89	n/a	-16%	-16%
Male	0	99	99	0	74	74	n/a	-25%	-25%
Unknown	0	0	0	0	0	0			
Latino/Latina	0	150	150	0	201	201	n/a	34%	34%
Female	0	97	97	0	109	109	n/a	12%	12%
Male	0	53	53	0	92	92	n/a	74%	74%
Unknown	0	0	0	0	0	0			
Filipino/Pilipino	0	108	108	0	119	119	n/a	10%	10%
Female	0	66	66	0	76	76	n/a	15%	15%
Male	0	42	42	0	43	43	n/a	2%	2%
Unknown	0	0	0	0	0	0			
Chinese	0	479	479	0	499	499	n/a	4%	4%
Female	0	325	325	0	333	333	n/a	2%	2%
Male	0	154	154	0	166	166	n/a	8%	8%
Unknown	0	0	0	0	0	0			
Japanese	0	56	56	0	56	56	n/a	0%	0%
Female	0	36	36	0	35	35	n/a	-3%	-3%
Male	0	20	20	0	21	21	n/a	5%	5%
Unknown	0	0	0	0	0	0			
Korean	0	94	94	0	87	87	n/a	-7%	-7%
Female	0	51	51	0	48	48	n/a	-6%	-6%
Male	0	43	43	0	39	39	n/a	-9%	-9%
Unknown	0	0	0	0	0	0			
Other Asian	0	369	369	0	413	413	n/a	12%	12%
Female	0	228	228	0	241	241	n/a	6%	6%
Male	0	141	141	0	172	172	n/a	22%	22%
Unknown	0	0	0	0	0	0			
Pakistani/East Indian	0	223	223	0	247	247	n/a	11%	11%
Female	0	125	125	0	147	147	n/a	18%	18%
Male	0	98	98	0	100	100	n/a	2%	2%
Unknown	0	0	0	0	0	0			
White	0	1,951	1,951	0	1,231	1,231	n/a	-37%	-37%
Female	0	1,128	1,128	0	748	748	n/a	-34%	-34%
Male	0	823	823	0	482	482	n/a	-41%	-41%
Unknown	0	0	0	0	1	1			
Not Stated/Unknown	0	629	629	0	1,319	1,319	n/a	110%	110%
Female	0	366	366	0	725	725	n/a	98%	98%
Male	0	263	263	0	590	590	n/a	124%	124%
Unknown	0	0	0	0	4	4			
Campus Total	0	4,636	4,636	0	4,716	4,716	n/a	2%	2%
Female	0	2,762	2,762	0	2,789	2,789	n/a	1%	1%
Male	0	1,874	1,874	0	1,921	1,921	n/a	3%	3%
Unknown	0	0	0	0	6	6			

Graduate student headcounts include Health Sciences Residents.

Table 7i: Enrollment by Ethnicity, Gender, and Level: Santa Barbara

	Fall 2010			Fall 2011			One-year change		
	Ug	Gr	Total	Ug	Gr	Total	Ug	Gr	Total
International	277	552	829	352	589	941	27%	7%	14%
Female	117	182	299	150	198	348	28%	9%	16%
Male	160	370	530	202	391	593	26%	6%	12%
Unknown	0	0	0	0	0	0			
American Indian	179	23	202	174	22	196	-3%	-4%	-3%
Female	110	17	127	99	15	114	-10%	-12%	-10%
Male	69	6	75	75	7	82	9%	17%	9%
Unknown	0	0	0	0	0	0			
African American	665	54	719	678	46	724	2%	-15%	1%
Female	422	34	456	428	27	455	1%	-21%	0%
Male	243	20	263	250	19	269	3%	-5%	2%
Unknown	0	0	0	0	0	0			
Chicano/Chicana	3,320	151	3,471	3,363	156	3,519	1%	3%	1%
Female	1,979	85	2,064	1,972	83	2,055	0%	-2%	0%
Male	1,341	66	1,407	1,391	73	1,464	4%	11%	4%
Unknown	0	0	0	0	0	0			
Latino/Latina	1,002	96	1,098	1,020	89	1,109	2%	-7%	1%
Female	560	47	607	577	43	620	3%	-9%	2%
Male	442	49	491	443	46	489	0%	-6%	0%
Unknown	0	0	0	0	0	0			
Filipino/Pilipino	567	23	590	534	29	563	-6%	26%	-5%
Female	307	16	323	292	17	309	-5%	6%	-4%
Male	260	7	267	242	12	254	-7%	71%	-5%
Unknown	0	0	0	0	0	0			
Chinese	1,277	81	1,358	1,428	86	1,514	12%	6%	11%
Female	603	45	648	665	44	709	10%	-2%	9%
Male	674	36	710	763	42	805	13%	17%	13%
Unknown	0	0	0	0	0	0			
Japanese	294	34	328	316	34	350	7%	0%	7%
Female	163	20	183	171	16	187	5%	-20%	2%
Male	131	14	145	145	18	163	11%	29%	12%
Unknown	0	0	0	0	0	0			
Korean	414	37	451	467	36	503	13%	-3%	12%
Female	220	21	241	240	23	263	9%	10%	9%
Male	194	16	210	227	13	240	17%	-19%	14%
Unknown	0	0	0	0	0	0			
Other Asian	755	53	808	778	50	828	3%	-6%	2%
Female	390	32	422	403	29	432	3%	-9%	2%
Male	365	21	386	375	21	396	3%	0%	3%
Unknown	0	0	0	0	0	0			
Pakistani/East Indian	259	42	301	281	39	320	8%	-7%	6%
Female	104	18	122	112	16	128	8%	-11%	5%
Male	155	24	179	169	23	192	9%	-4%	7%
Unknown	0	0	0	0	0	0			
White	9,061	1,478	10,539	8,336	1,467	9,803	-8%	-1%	-7%
Female	4,604	685	5,289	4,238	668	4,906	-8%	-2%	-7%
Male	4,457	793	5,250	4,098	799	4,897	-8%	1%	-7%
Unknown	0	0	0	0	0	0			
Not Stated/Unknown	1,129	395	1,524	909	406	1,315	-19%	3%	-14%
Female	547	186	733	427	184	611	-22%	-1%	-17%
Male	582	209	791	482	222	704	-17%	6%	-11%
Unknown	0	0	0	0	0	0			
Campus Total	19,199	3,019	22,218	18,636	3,049	21,685	-3%	1%	-2%
Female	10,126	1,388	11,514	9,774	1,363	11,137	-3%	-2%	-3%
Male	9,073	1,631	10,704	8,862	1,686	10,548	-2%	3%	-1%
Unknown	0	0	0	0	0	0			

Graduate student headcounts include Health Sciences Residents.

Table 7j: Enrollment by Ethnicity, Gender, and Level: Santa Cruz

	Fall 2010			Fall 2011			One-year change		
	Ug	Gr	Total	Ug	Gr	Total	Ug	Gr	Total
International	62	216	278	58	214	272	-6%	-1%	-2%
Female	29	89	118	31	80	111	7%	-10%	-6%
Male	33	127	160	27	134	161	-18%	6%	1%
Unknown	0	0	0	0	0	0			
American Indian	176	9	185	200	13	213	14%	44%	15%
Female	106	4	110	112	8	120	6%	100%	9%
Male	70	5	75	88	5	93	26%	0%	24%
Unknown	0	0	0	0	0	0			
African American	436	34	470	467	40	507	7%	18%	8%
Female	249	18	267	265	21	286	6%	17%	7%
Male	187	15	202	202	19	221	8%	27%	9%
Unknown	0	1	1	0	0	0			
Chicano/Chicana	2,339	97	2,436	2,786	95	2,881	19%	-2%	18%
Female	1,418	48	1,466	1,695	51	1,746	20%	6%	19%
Male	920	49	969	1,087	44	1,131	18%	-10%	17%
Unknown	1	0	1	4	0	4			
Latino/Latina	803	55	858	902	50	952	12%	-9%	11%
Female	464	23	487	522	21	543	13%	-9%	11%
Male	339	32	371	379	29	408	12%	-9%	10%
Unknown	0	0	0	1	0	1			
Filipino/Pilipino	521	15	536	510	22	532	-2%	47%	-1%
Female	280	11	291	266	14	280	-5%	27%	-4%
Male	241	4	245	244	8	252	1%	100%	3%
Unknown	0	0	0	0	0	0			
Chinese	1,529	49	1,578	1,597	50	1,647	4%	2%	4%
Female	753	27	780	784	29	813	4%	7%	4%
Male	776	22	798	812	21	833	5%	-5%	4%
Unknown	0	0	0	1	0	1			
Japanese	321	24	345	334	23	357	4%	-4%	3%
Female	145	14	159	143	13	156	-1%	-7%	-2%
Male	176	10	186	191	10	201	9%	0%	8%
Unknown	0	0	0	0	0	0			
Korean	222	13	235	242	14	256	9%	8%	9%
Female	114	9	123	101	9	110	-11%	0%	-11%
Male	108	4	112	141	5	146	31%	25%	30%
Unknown	0	0	0	0	0	0			
Other Asian	887	40	927	921	40	961	4%	0%	4%
Female	501	20	521	503	20	523	0%	0%	0%
Male	386	20	406	418	20	438	8%	0%	8%
Unknown	0	0	0	0	0	0			
Pakistani/East Indian	89	8	97	197	12	209	121%	50%	115%
Female	43	3	46	107	4	111	149%	33%	141%
Male	46	5	51	90	8	98	96%	60%	92%
Unknown	0	0	0	0	0	0			
White	7,003	756	7,759	6,799	779	7,578	-3%	3%	-2%
Female	3,519	337	3,856	3,377	342	3,719	-4%	1%	-4%
Male	3,483	419	3,902	3,419	437	3,856	-2%	4%	-1%
Unknown	1	0	1	3	0	3			
Not Stated/Unknown	1,280	203	1,483	932	157	1,089	-27%	-23%	-27%
Female	588	90	678	426	72	498	-28%	-20%	-27%
Male	627	113	740	452	85	537	-28%	-25%	-27%
Unknown	65	0	65	54	0	54			
Campus Total	15,668	1,519	17,187	15,945	1,509	17,454	2%	-1%	2%
Female	8,209	693	8,902	8,332	684	9,016	1%	-1%	1%
Male	7,392	825	8,217	7,550	825	8,375	2%	0%	2%
Unknown	67	1	68	63	0	63			

Graduate student headcounts include Health Sciences Residents.

Table 7k: Enrollment by Ethnicity, Gender, and Level: University Total

	Fall 2010			Fall 2011			One-year change		
	Ug	Gr	Total	Ug	Gr	Total	Ug	Gr	Total
International	6,313	8,863	15,176	8,203	9,277	17,480	30%	5%	15%
Female	2,984	3,053	6,037	3,842	3,190	7,032	29%	4%	16%
Male	3,324	5,810	9,134	4,356	6,086	10,442	31%	5%	14%
Unknown	5	0	5	5	1	6			
American Indian	1,162	377	1,539	1,218	412	1,630	5%	9%	6%
Female	669	194	863	689	215	904	3%	11%	5%
Male	493	183	676	528	197	725	7%	8%	7%
Unknown				1	0	1			
African American	6,488	1,502	7,990	6,672	1,610	8,282	3%	7%	4%
Female	3,958	900	4,858	4,097	960	5,057	4%	7%	4%
Male	2,530	601	3,131	2,573	650	3,223	2%	8%	3%
Unknown	0	1	1	2	0	2			
Chicano/Chicana	24,365	2,411	26,776	26,949	2,599	29,548	11%	8%	10%
Female	14,399	1,295	15,694	15,837	1,395	17,232	10%	8%	10%
Male	9,961	1,116	11,077	11,101	1,204	12,305	11%	8%	11%
Unknown	5	0	5	11	0	11			
Latino/Latina	7,544	1,673	9,217	8,093	1,716	9,809	7%	3%	6%
Female	4,287	903	5,190	4,596	893	5,489	7%	-1%	6%
Male	3,257	770	4,027	3,496	823	4,319	7%	7%	7%
Unknown	0	0	0	1	0	1			
Filipino/Pilipino	7,886	750	8,636	7,837	844	8,681	-1%	13%	1%
Female	4,326	420	4,746	4,314	459	4,773	0%	9%	1%
Male	3,560	330	3,890	3,522	385	3,907	-1%	17%	0%
Unknown	0	0	0	1	0	1			
Chinese	27,920	4,079	31,999	27,725	4,191	31,916	-1%	3%	0%
Female	14,135	2,087	16,222	14,006	2,147	16,153	-1%	3%	0%
Male	13,780	1,992	15,772	13,714	2,044	15,758	0%	3%	0%
Unknown	5	0	5	5	0	5			
Japanese	3,323	664	3,987	3,409	706	4,115	3%	6%	3%
Female	1,724	324	2,048	1,776	356	2,132	3%	10%	4%
Male	1,598	340	1,938	1,632	350	1,982	2%	3%	2%
Unknown	1	0	1	1	0	1			
Korean	8,420	1,043	9,463	8,224	1,023	9,247	-2%	-2%	-2%
Female	4,340	566	4,906	4,148	530	4,678	-4%	-6%	-5%
Male	4,078	477	4,555	4,075	493	4,568	0%	3%	0%
Unknown	2	0	2	1	0	1			
Other Asian	14,477	2,072	16,549	14,466	2,331	16,797	0%	13%	1%
Female	7,976	1,130	9,106	7,984	1,254	9,238	0%	11%	1%
Male	6,498	942	7,440	6,480	1,077	7,557	0%	14%	2%
Unknown	3	0	3	2	0	2			
Pakistani/East Indian	6,099	1,774	7,873	6,727	1,873	8,600	10%	6%	9%
Female	3,075	745	3,820	3,428	798	4,226	11%	7%	11%
Male	3,023	1,029	4,052	3,298	1,075	4,373	9%	4%	8%
Unknown	1	0	1	1	0	1			
White	55,221	22,494	77,715	53,568	21,682	75,250	-3%	-4%	-3%
Female	28,426	10,605	39,031	27,460	10,177	37,637	-3%	-4%	-4%
Male	26,790	11,889	38,679	26,090	11,503	37,593	-3%	-3%	-3%
Unknown	5	0	5	18	2	20			
Not Stated/Unknown	10,363	7,181	17,544	8,417	6,919	15,336	-19%	-4%	-13%
Female	5,104	3,489	8,593	4,123	3,304	7,427	-19%	-5%	-14%
Male	4,987	3,690	8,677	4,070	3,607	7,677	-18%	-2%	-12%
Unknown	272	2	274	224	8	232			
University Total	179,581	54,883	234,464	181,508	55,183	236,691	1%	1%	1%
Female	95,403	25,711	121,114	96,300	25,678	121,978	1%	0%	1%
Male	83,879	29,169	113,048	84,935	29,494	114,429	1%	1%	1%
Unknown	299	3	302	273	11	284			

Graduate student headcounts include Health Sciences Residents.

Table 8: Degrees Conferred by Campus, Degree Type, and Gender

	2009-2010				2010-2011				One-year change		
	Female	Male	Unk	Total	Female	Male	Unk	Total	Female	Male	Total
Berkeley	5,208	5,175	0	10,383	5,483	5,375	11	10,869	5%	4%	5%
Bachelor	3,735	3,357	0	7,092	3,948	3,507	11	7,466	6%	4%	5%
Master	878	1,168	0	2,046	931	1,180	0	2,111	6%	1%	3%
Doctor	385	506	0	891	392	528	0	920	2%	4%	3%
Juris Doctor	160	136	0	296	161	149	0	310	1%	10%	5%
Doctor of Optometry	50	8	0	58	51	11	0	62	2%	38%	7%
Davis	4,576	3,549	0	8,125	4,636	3,716	2	8,354	1%	5%	3%
Bachelor	3,636	2,733	0	6,369	3,681	2,828	2	6,511	1%	3%	2%
Master	455	410	0	865	440	472	0	912	-3%	15%	5%
Doctor	224	256	0	480	246	261	0	507	10%	2%	6%
Candidate in Philosophy	0	0	0	0	2	2	0	4	n/a	n/a	n/a
Juris Doctor	111	84	0	195	106	89	0	195	-5%	6%	0%
Doctor of Medicine	53	36	0	89	58	42	0	100	9%	17%	12%
Doctor of Veterinary Med.	97	30	0	127	103	22	0	125	6%	-27%	-2%
Irvine	3,869	3,655	42	7,566	4,100	3,745	33	7,878	6%	2%	4%
Bachelor	3,151	2,769	42	5,962	3,399	2,866	33	6,298	8%	4%	6%
Master	514	622	0	1,136	490	614	0	1,104	-5%	-1%	-3%
Doctor	156	209	0	365	160	214	0	374	3%	2%	2%
Doctor of Medicine	48	55	0	103	51	51	0	102	6%	-7%	-1%
Los Angeles	6,506	5,429	2	11,937	6,338	5,594	2	11,934	-3%	3%	0%
Bachelor	4,393	3,148	2	7,543	4,261	3,283	2	7,546	-3%	4%	0%
Master	1,320	1,387	0	2,707	1,318	1,397	0	2,715	0%	1%	0%
Doctor	335	413	0	748	334	394	0	728	0%	-5%	-3%
Candidate in Philosophy	142	184	0	326	157	186	0	343	11%	1%	5%
Engineer	1	2	0	3	0	0	0	0	-100%	-100%	-100%
Juris Doctor	179	167	0	346	156	186	0	342	-13%	11%	-1%
Doctor of Dental Surgery	52	46	0	98	47	52	0	99	-10%	13%	1%
Doctor of Medicine	84	82	0	166	65	96	0	161	-23%	17%	-3%
Merced	199	186	0	385	199	228	1	428	0%	23%	11%
Bachelor	186	164	0	350	187	213	1	401	1%	30%	15%
Master	10	10	0	20	9	10	0	19	-10%	0%	-5%
Doctor	3	12	0	15	3	5	0	8	0%	-58%	-47%
Riverside	2,023	1,788	12	3,823	2,110	2,034	12	4,156	4%	14%	9%
Bachelor	1,684	1,494	12	3,190	1,803	1,649	12	3,464	7%	10%	9%
Master	252	186	0	438	201	256	0	457	-20%	38%	4%
Doctor	87	108	0	195	106	129	0	235	22%	19%	21%
San Diego	3,886	3,900	0	7,786	4,194	4,162	0	8,356	8%	7%	7%
Bachelor	3,125	2,732	0	5,857	3,352	2,984	0	6,336	7%	9%	8%
Master	416	618	0	1,034	439	631	0	1,070	6%	2%	3%
Doctor	177	267	0	444	199	285	0	484	12%	7%	9%
Candidate in Philosophy	62	200	0	262	89	187	0	276	44%	-7%	5%
Doctor of Audiology	9	6	0	15	5	0	0	5	-44%	-100%	-67%
Doctor of Medicine	55	67	0	122	67	61	0	128	22%	-9%	5%
Doctor of Pharmacy	42	10	0	52	43	14	0	57	2%	40%	10%

Table 8: Degrees Conferred by Campus, Degree Type, and Gender

	2009-2010				2010-2011				One-year change		
	Female	Male	Unk	Total	Female	Male	Unk	Total	Female	Male	Total
San Francisco	561	290	0	851	614	250	0	864	9%	-14%	2%
Bachelor	0	0	0	0	0	0	0	0	n/a	n/a	n/a
Master	237	61	0	298	278	54	0	332	17%	-11%	11%
Doctor	91	59	0	150	71	48	0	119	-22%	-19%	-21%
Doctor of Dental Surgery	45	56	0	101	56	50	0	106	24%	-11%	5%
Doctor of Medicine	81	76	0	157	85	59	0	144	5%	-22%	-8%
Doctor of Pharmacy	87	31	0	118	92	35	0	127	6%	13%	8%
Doctor of Physical Therapy	20	7	0	27	32	4	0	36	60%	-43%	33%
Santa Barbara	3,227	2,678	2	5,907	3,303	2,845	2	6,150	2%	6%	4%
Bachelor	2,803	2,200	2	5,005	2,832	2,378	2	5,212	1%	8%	4%
Master	304	287	0	591	308	270	0	578	1%	-6%	-2%
Doctor	118	181	0	299	163	191	0	354	38%	6%	18%
Candidate in Philosophy	2	10	0	12	0	6	0	6	-100%	-40%	-50%
Santa Cruz	2,073	1,813	23	3,909	2,231	1,910	19	4,160	8%	5%	6%
Bachelor	1,868	1,597	23	3,488	1,987	1,695	19	3,701	6%	6%	6%
Master	128	142	0	270	165	146	0	311	29%	3%	15%
Doctor	77	74	0	151	79	69	0	148	3%	-7%	-2%
University Total	32,128	28,463	81	60,672	33,208	29,859	82	63,149	3%	5%	4%
Bachelor	24,581	20,194	81	44,856	25,450	21,403	82	46,935	4%	6%	5%
Master	4,514	4,891	0	9,405	4,579	5,030	0	9,609	1%	3%	2%
Doctor	1,653	2,085	0	3,738	1,753	2,124	0	3,877	6%	2%	4%
Candidate in Philosophy	206	394	0	600	248	381	0	629	20%	-3%	5%
Engineer	1	2	0	3	0	0	0	0	-100%	-100%	-100%
Juris Doctor	450	387	0	837	423	424	0	847	-6%	10%	1%
Doctor of Audiology	9	6	0	15	5	0	0	5	-44%	-100%	-67%
Doctor of Dental Surgery	97	102	0	199	103	102	0	205	6%	0%	3%
Doctor of Medicine	321	316	0	637	326	309	0	635	2%	-2%	0%
Doctor of Optometry	50	8	0	58	51	11	0	62	2%	38%	7%
Doctor of Veterinary Med.	97	30	0	127	103	22	0	125	6%	-27%	-2%
Doctor of Pharmacy	129	41	0	170	135	49	0	184	5%	20%	8%
Doctor of Physical Therapy	20	7	0	27	32	4	0	36	60%	-43%	33%

Table 9: Degrees Conferred by Discipline and Degree Type

	2009-2010			2010-2011			2010-2011 Distribution		
	Bachelor	Master	Doctor	Bachelor	Master	Doctor	Bachelor	Master	Doctor
University Total	44,856	9,405	3,738	46,935	9,609	3,877	100%	100%	100%
Agriculture, Natural Resources	1,522	187	63	1,403	176	89	3%	2%	2%
Architecture & Environmental Design	302	270	27	311	313	23	1%	3%	1%
Area, Ethnic, Cultural & Gender Studies	809	117	20	869	95	25	2%	1%	1%
Biological Sciences	6,999	354	768	7,449	343	753	16%	4%	19%
Business & Management	2,842	2,037	36	3,236	2,129	22	7%	22%	1%
Communication, Journalism & Related	988	73	12	990	63	5	2%	1%	0%
Computer & Information Sciences	573	440	205	701	380	179	1%	4%	5%
Criminology	0	7	0	0	15	0	0%	0%	0%
Dental Sciences	0	19	5	0	28	4	0%	0%	0%
Education	6	922	218	14	926	234	0%	10%	6%
Engineering	3,364	1,358	603	3,501	1,329	649	7%	14%	17%
Family & Consumer Sci./Human Sci.	345	18	5	329	13	5	1%	0%	0%
Fine & Applied Arts	2,279	382	118	2,277	357	115	5%	4%	3%
Foreign Languages & Literature	892	152	141	907	161	160	2%	2%	4%
Health Professions	0	109	7	0	107	1	0%	1%	0%
Interdisciplinary Studies/Multiple Majors	5,424	91	58	5,685	64	56	12%	1%	1%
Law	148	211	17	136	262	27	0%	3%	1%
Letters	2,375	231	139	2,309	189	125	5%	2%	3%
Library Science	0	80	0	0	71	0	0%	1%	0%
Mathematics	784	158	122	861	200	152	2%	2%	4%
Nursing	111	373	30	106	396	25	0%	4%	1%
Pharmacy	8	2	17	17	2	15	0%	0%	0%
Physical Sciences	1,081	361	483	1,191	480	528	3%	5%	14%
Psychology	3,745	111	129	4,001	118	143	9%	1%	4%
Public Administration & Social Services	200	298	21	205	303	19	0%	3%	0%
Public Health	297	371	37	412	447	40	1%	5%	1%
Social Sciences	9,754	646	457	10,017	629	483	21%	7%	12%
Veterinary Medical Sciences	8	27	0	8	13	0	0%	0%	0%

Excludes first professional degrees (J.D., D.D.S, M.D., O.D., Pharm D., D.V.M., D.P.T., Au.D).

Table 10: Personnel FTE and Headcount by Campus and Personnel Program

	October 2007		October 2010		October 2011		October 2011 Percentage of Total	
	FTE	Headcount	FTE	Headcount	FTE	Headcount	FTE	Headcount
Office of the President and Agriculture & Natural Resources	3,094	3,555	2,552	2,888	2,449	2,754	100%	100%
Unclassified	0	0	0	0	1	1	0%	0%
Academic	503	574	434	502	367	421	15%	15%
Non-Academic	2,591	2,981	2,118	2,386	2,081	2,332	85%	85%
SMG & MSP	609	640	592	605	616	635	25%	23%
PSS	1,982	2,341	1,526	1,781	1,465	1,697	60%	62%
Office of the President	1,900	2,098	1,484	1,586	1,515	1,620	100%	100%
Unclassified	0	0	0	0	1	1	0%	0%
Academic	81	97	52	65	40	52	3%	3%
Non-Academic	1,819	2,001	1,432	1,521	1,474	1,567	97%	97%
SMG & MSP	573	602	554	566	591	611	39%	38%
PSS	1,246	1,399	878	955	883	956	58%	59%
Agriculture & Natural Resources	1,194	1,457	1,068	1,302	934	1,134	100%	100%
Unclassified	0	0	0	0	0	0	0%	0%
Academic	422	477	382	437	327	369	35%	33%
Non-Academic	772	980	686	865	607	765	65%	67%
SMG & MSP	36	38	38	39	25	24	3%	2%
PSS	736	942	648	826	582	741	62%	65%
Berkeley	14,161	21,836	13,873	21,139	13,693	20,980	100%	100%
Unclassified	0	0	0	0	0	0	0%	0%
Academic	5,464	8,855	5,665	8,985	5,613	8,865	41%	42%
Non-Academic	8,697	12,981	8,208	12,154	8,080	12,115	59%	58%
SMG & MSP	918	989	1,081	1,137	1,073	1,132	8%	5%
PSS	7,779	11,992	7,127	11,017	7,007	10,983	51%	52%
Davis	20,883	27,961	21,330	28,408	21,602	28,754	100%	100%
Unclassified	0	0	0	0	0	0	0%	0%
Academic	5,802	7,975	6,234	8,537	6,194	8,451	29%	29%
Non-Academic	15,081	19,986	15,096	19,871	15,408	20,303	71%	71%
SMG & MSP	848	922	888	977	883	972	4%	3%
PSS	14,233	19,064	14,208	18,894	14,525	19,331	67%	67%
Irvine	12,558	17,236	12,809	17,704	13,024	17,935	100%	100%
Unclassified	0	0	0	0	0	0	0%	0%
Academic	4,074	5,665	4,126	5,829	4,149	5,682	32%	32%
Non-Academic	8,484	11,571	8,683	11,875	8,875	12,253	68%	68%
SMG & MSP	703	746	715	751	733	774	6%	4%
PSS	7,781	10,825	7,968	11,124	8,142	11,479	63%	64%
Los Angeles	28,292	38,541	29,856	40,028	30,658	41,014	100%	100%
Unclassified	0	0	0	0	0	0	0%	0%
Academic	7,545	10,640	7,757	10,764	7,815	10,737	25%	26%
Non-Academic	20,747	27,901	22,099	29,264	22,843	30,277	75%	74%
SMG & MSP	1,569	1,736	1,831	1,989	2,081	2,265	7%	6%
PSS	19,178	26,165	20,268	27,275	20,762	28,012	68%	68%

Table 10: Personnel FTE and Headcount by Campus and Personnel Program

	October 2007		October 2010		October 2011		October 2011 Percentage of Total	
	FTE	Headcount	FTE	Headcount	FTE	Headcount	FTE	Headcount
Merced	799	1,183	1,207	1,876	1,332	2,033	100%	100%
Unclassified	0	0	0	0	2	2	0%	0%
Academic	225	320	389	552	422	593	32%	29%
Non-Academic	574	863	818	1,324	908	1,438	68%	71%
SMG & MSP	102	106	141	150	146	152	11%	7%
PSS	472	757	677	1,174	762	1,286	57%	63%
Riverside	4,689	7,147	4,880	7,503	4,800	7,358	100%	100%
Unclassified	0	0	0	0	0	0	0%	0%
Academic	1,845	2,774	1,982	2,995	1,848	2,781	39%	38%
Non-Academic	2,844	4,373	2,898	4,508	2,952	4,577	62%	62%
SMG & MSP	229	246	231	241	238	250	5%	3%
PSS	2,615	4,127	2,667	4,267	2,714	4,327	57%	59%
San Diego	18,274	24,730	19,887	26,753	20,140	26,868	100%	100%
Unclassified	0	0	0	0	0	0	0%	0%
Academic	5,067	7,126	5,879	8,253	5,857	8,043	29%	30%
Non-Academic	13,207	17,604	14,008	18,500	14,283	18,825	71%	70%
SMG & MSP	1,042	1,169	1,086	1,227	1,109	1,245	6%	5%
PSS	12,165	16,435	12,922	17,273	13,174	17,580	65%	65%
San Francisco	18,140	21,331	19,211	22,376	19,434	22,555	100%	100%
Unclassified	0	1	0	0	0	0	0%	0%
Academic	4,721	5,497	5,265	6,148	5,401	6,079	28%	27%
Non-Academic	13,419	15,833	13,946	16,228	14,033	16,476	72%	73%
SMG & MSP	1,204	1,368	1,380	1,546	1,417	1,580	7%	7%
PSS	12,215	14,465	12,566	14,682	12,616	14,896	65%	66%
Santa Barbara	6,081	9,723	6,030	9,796	6,014	9,672	100%	100%
Unclassified	0	0	0	0	0	0	0%	0%
Academic	2,406	3,572	2,435	3,622	2,364	3,528	39%	36%
Non-Academic	3,675	6,151	3,595	6,174	3,650	6,144	61%	64%
SMG & MSP	324	343	331	351	336	359	6%	4%
PSS	3,351	5,808	3,264	5,823	3,314	5,785	55%	60%
Santa Cruz	4,597	7,464	4,510	7,364	4,400	7,278	100%	100%
Unclassified	0	0	0	0	0	0	0%	0%
Academic	1,552	2,426	1,539	2,497	1,537	2,442	35%	34%
Non-Academic	3,045	5,038	2,971	4,867	2,863	4,836	65%	66%
SMG & MSP	277	289	318	337	322	343	7%	5%
PSS	2,768	4,749	2,653	4,530	2,541	4,493	58%	62%
University Total	131,568	180,707	136,145	185,835	137,546	187,201	100%	100%
Unclassified	0	1	0	0	3	3	0%	0%
Academic	39,204	55,424	41,705	58,684	41,567	57,622	30%	31%
Non-Academic	92,364	125,282	94,440	127,151	95,976	129,576	70%	69%
SMG & MSP	7,825	8,554	8,594	9,311	8,954	9,707	7%	5%
PSS	84,539	116,728	85,846	117,840	87,022	119,869	63%	64%

Table 11a: Personnel Headcount by Ethnicity, Personnel Program, and Gender: Berkeley

	Oct 2010			Oct 2011			Percent Change
	Female	Male	Total	Female	Male	Total	
American Indian	53	26	79	56	24	80	1%
Unclassified	1	0	1	0	0	0	-100%
Academic	13	10	23	16	8	24	4%
Non-Academic	39	16	55	40	16	56	2%
SMG & MSP	0	0	0	1	0	1	0%
PSS	39	16	55	39	16	55	0%
Asian	2,315	1,948	4,263	2,452	2,095	4,547	7%
Unclassified	26	19	45	23	19	42	-7%
Academic	637	1,017	1,654	662	1,056	1,718	4%
Non-Academic	1,652	912	2,564	1,767	1,020	2,787	9%
SMG & MSP	69	69	138	72	70	142	3%
PSS	1,583	843	2,426	1,695	950	2,645	9%
African American	695	438	1,133	711	452	1,163	3%
Unclassified	0	3	3	2	1	3	0%
Academic	89	91	180	104	92	196	9%
Non-Academic	606	344	950	605	359	964	1%
SMG & MSP	33	25	58	36	20	56	-3%
PSS	573	319	892	569	339	908	2%
Hispanic	909	756	1,665	1,048	809	1,857	12%
Unclassified	0	5	5	7	5	12	140%
Academic	138	219	357	168	236	404	13%
Non-Academic	771	532	1,303	873	568	1,441	11%
SMG & MSP	26	24	50	27	26	53	6%
PSS	745	508	1,253	846	542	1,388	11%
White	4,185	4,555	8,740	4,247	4,643	8,890	2%
Unclassified	17	9	26	25	18	43	65%
Academic	1,656	2,598	4,254	1,621	2,616	4,237	0%
Non-Academic	2,512	1,948	4,460	2,601	2,009	4,610	3%
SMG & MSP	369	426	795	366	411	777	-2%
PSS	2,143	1,522	3,665	2,235	1,598	3,833	5%
Unknown/Not Stated	2,754	2,505	5,259	2,281	2,162	4,443	-16%
Unclassified	36	39	75	28	16	44	-41%
Academic	1,117	1,401	2,518	962	1,326	2,288	-9%
Non-Academic	1,601	1,065	2,666	1,291	820	2,111	-21%
SMG & MSP	37	58	95	39	58	97	2%
PSS	1,564	1,007	2,571	1,252	762	2,014	-22%
Campus Total	10,911	10,228	21,139	10,795	10,185	20,980	-1%
Unclassified	80	75	155	85	59	144	-7%
Academic	3,650	5,336	8,986	3,533	5,334	8,867	-1%
Non-Academic	7,181	4,817	11,998	7,177	4,792	11,969	0%
SMG & MSP	534	602	1,136	541	585	1,126	-1%
PSS	6,647	4,215	10,862	6,636	4,207	10,843	0%

Table 11b: Personnel Headcount by Ethnicity, Personnel Program, and Gender: Davis

	Oct 2010			Oct 2011			Percent Change
	Female	Male	Total	Female	Male	Total	
American Indian	132	71	203	153	68	221	9%
Unclassified	0	0	0	0	0	0	0%
Academic	23	22	45	35	18	53	18%
Non-Academic	109	49	158	118	50	168	6%
SMG & MSP	5	1	6	8	1	9	50%
PSS	104	48	152	110	49	159	5%
Asian	3,714	2,724	6,438	3,787	2,722	6,509	1%
Unclassified	1	3	4	1	4	5	25%
Academic	974	1,183	2,157	950	1,154	2,104	-2%
Non-Academic	2,739	1,538	4,277	2,836	1,564	4,400	3%
SMG & MSP	68	71	139	74	69	143	3%
PSS	2,671	1,467	4,138	2,762	1,495	4,257	3%
African American	885	481	1,366	914	511	1,425	4%
Unclassified	1	0	1	1	1	2	100%
Academic	76	74	150	85	75	160	7%
Non-Academic	808	407	1,215	828	435	1,263	4%
SMG & MSP	28	13	41	26	14	40	-2%
PSS	780	394	1,174	802	421	1,223	4%
Hispanic	1,947	1,178	3,125	2,075	1,210	3,285	5%
Unclassified	1	2	3	4	1	5	67%
Academic	241	261	502	268	263	531	6%
Non-Academic	1,705	915	2,620	1,803	946	2,749	5%
SMG & MSP	33	24	57	38	17	55	-4%
PSS	1,672	891	2,563	1,765	929	2,694	5%
White	9,214	6,646	15,860	9,295	6,691	15,986	1%
Unclassified	6	1	7	4	6	10	43%
Academic	2,120	2,906	5,026	2,110	2,855	4,965	-1%
Non-Academic	7,088	3,739	10,827	7,181	3,830	11,011	2%
SMG & MSP	381	337	718	384	324	708	-1%
PSS	6,707	3,402	10,109	6,797	3,506	10,303	2%
Unknown/Not Stated	760	656	1,416	726	602	1,328	-6%
Unclassified	1	2	3	2	1	3	0%
Academic	287	370	657	290	348	638	-3%
Non-Academic	472	284	756	434	253	687	-9%
SMG & MSP	6	8	14	7	9	16	14%
PSS	466	276	742	427	244	671	-10%
Total Campus	16,652	11,756	28,408	16,950	11,804	28,754	1%
Unclassified	10	8	18	12	13	25	39%
Academic	3,721	4,816	8,537	3,738	4,713	8,451	-1%
Non-Academic	12,921	6,932	19,853	13,200	7,078	20,278	2%
SMG & MSP	521	454	975	537	434	971	0%
PSS	12,400	6,478	18,878	12,663	6,644	19,307	2%

Table 11c: Personnel Headcount by Ethnicity, Personnel Program, and Gender: Irvine

	Oct 2010			Oct 2011			Percent Change
	Female	Male	Total	Female	Male	Total	
American Indian	44	32	76	39	30	69	-9%
Unclassified	0	1	1	0	0	0	-100%
Academic	12	15	27	10	14	24	-11%
Non-Academic	32	16	48	29	16	45	-6%
SMG & MSP	3	2	5	2	2	4	-20%
PSS	29	14	43	27	14	41	-5%
Asian	3,094	2,306	5,400	3,109	2,363	5,472	1%
Unclassified	3	2	5	3	1	4	-20%
Academic	723	1,079	1,802	683	1,057	1,740	-3%
Non-Academic	2,368	1,225	3,593	2,423	1,305	3,728	4%
SMG & MSP	74	47	121	88	53	141	17%
PSS	2,294	1,178	3,472	2,335	1,252	3,587	3%
African American	328	214	542	347	223	570	5%
Unclassified	0	2	2	0	0	0	-100%
Academic	53	48	101	63	56	119	18%
Non-Academic	275	164	439	284	167	451	3%
SMG & MSP	16	10	26	18	13	31	19%
PSS	259	154	413	266	154	420	2%
Hispanic	1,842	1,107	2,949	1,893	1,091	2,984	1%
Unclassified	1	1	2	1	2	3	50%
Academic	154	217	371	156	206	362	-2%
Non-Academic	1,687	889	2,576	1,736	883	2,619	2%
SMG & MSP	27	25	52	32	25	57	10%
PSS	1,660	864	2,524	1,704	858	2,562	2%
White	4,194	3,340	7,534	4,058	3,300	7,358	-2%
Unclassified	5	3	8	1	3	4	-50%
Academic	1,343	1,948	3,291	1,283	1,903	3,186	-3%
Non-Academic	2,846	1,389	4,235	2,774	1,394	4,168	-2%
SMG & MSP	284	240	524	283	224	507	-3%
PSS	2,562	1,149	3,711	2,491	1,170	3,661	-1%
Unknown/Not Stated	705	498	1,203	854	628	1,482	23%
Unclassified	1	0	1	1	0	1	0%
Academic	110	127	237	99	152	251	6%
Non-Academic	594	371	965	754	476	1,230	27%
SMG & MSP	8	10	18	15	13	28	56%
PSS	586	361	947	739	463	1,202	27%
Total Campus	10,207	7,497	17,704	10,300	7,635	17,935	1%
Unclassified	10	9	19	6	6	12	-37%
Academic	2,395	3,434	5,829	2,294	3,388	5,682	-3%
Non-Academic	7,802	4,054	11,856	8,000	4,241	12,241	3%
SMG & MSP	412	334	746	438	330	768	3%
PSS	7,390	3,720	11,110	7,562	3,911	11,473	3%

Table 11d: Personnel Headcount by Ethnicity, Personnel Program, and Gender: Los Angeles

	Oct 2010			Oct 2011			Percent Change
	Female	Male	Total	Female	Male	Total	
American Indian	91	60	151	89	57	146	-3%
Unclassified	0	0	0	0	0	0	0%
Academic	17	13	30	20	14	34	13%
Non-Academic	74	47	121	69	43	112	-7%
SMG & MSP	5	8	13	6	8	14	8%
PSS	69	39	108	63	35	98	-9%
Asian	6,058	4,577	10,635	6,366	4,764	11,130	5%
Unclassified	23	19	42	34	26	60	43%
Academic	1,359	1,875	3,234	1,352	1,905	3,257	1%
Non-Academic	4,676	2,683	7,359	4,980	2,833	7,813	6%
SMG & MSP	186	211	397	226	258	484	22%
PSS	4,490	2,472	6,962	4,754	2,575	7,329	5%
African American	2,482	1,264	3,746	2,529	1,269	3,798	1%
Unclassified	3	2	5	9	3	12	140%
Academic	173	123	296	174	115	289	-2%
Non-Academic	2,306	1,139	3,445	2,346	1,151	3,497	2%
SMG & MSP	67	53	120	79	66	145	21%
PSS	2,239	1,086	3,325	2,267	1,085	3,352	1%
Hispanic	4,327	3,035	7,362	4,735	3,170	7,905	7%
Unclassified	8	1	9	10	3	13	44%
Academic	326	346	672	336	375	711	6%
Non-Academic	3,993	2,688	6,681	4,389	2,792	7,181	7%
SMG & MSP	87	64	151	94	75	169	12%
PSS	3,906	2,624	6,530	4,295	2,717	7,012	7%
White	8,816	7,489	16,305	9,072	7,516	16,588	2%
Unclassified	35	35	70	25	29	54	-23%
Academic	2,331	3,552	5,883	2,360	3,511	5,871	0%
Non-Academic	6,450	3,902	10,352	6,687	3,976	10,663	3%
SMG & MSP	662	586	1,248	729	674	1,403	12%
PSS	5,788	3,316	9,104	5,958	3,302	9,260	2%
Unknown/Not Stated	1,002	827	1,829	777	670	1,447	-21%
Unclassified	13	18	31	17	18	35	13%
Academic	263	386	649	228	348	576	-11%
Non-Academic	726	423	1,149	532	304	836	-27%
SMG & MSP	30	26	56	20	28	48	-14%
PSS	696	397	1,093	512	276	788	-28%
Total Campus	22,776	17,252	40,028	23,568	17,446	41,014	2%
Unclassified	82	75	157	95	79	174	11%
Academic	4,469	6,295	10,764	4,470	6,268	10,738	0%
Non-Academic	18,225	10,882	29,107	19,003	11,099	30,102	3%
SMG & MSP	1,037	948	1,985	1,154	1,109	2,263	14%
PSS	17,188	9,934	27,122	17,849	9,990	27,839	3%

Table 11e: Personnel Headcount by Ethnicity, Personnel Program, and Gender: Merced

	Oct 2010			Oct 2011			Percent Change
	Female	Male	Total	Female	Male	Total	
American Indian	11	5	16	11	5	16	0%
Unclassified	0	0	0	0	0	0	0%
Academic	3	2	5	3	2	5	0%
Non-Academic	8	3	11	8	3	11	0%
SMG & MSP	0	1	1	1	0	1	0%
PSS	8	2	10	7	3	10	0%
Asian	167	200	367	189	220	409	11%
Unclassified	0	0	0	1	0	1	0%
Academic	41	91	132	45	94	139	5%
Non-Academic	126	109	235	143	126	269	14%
SMG & MSP	6	11	17	7	12	19	12%
PSS	120	98	218	136	114	250	15%
African American	59	31	90	67	44	111	23%
Unclassified	1	0	1	0	0	0	-100%
Academic	2	9	11	6	10	16	45%
Non-Academic	56	22	78	61	34	95	22%
SMG & MSP	3	1	4	2	2	4	0%
PSS	53	21	74	59	32	91	23%
Hispanic	254	231	485	298	246	544	12%
Unclassified	1	0	1	1	1	2	100%
Academic	28	49	77	33	47	80	4%
Non-Academic	225	182	407	264	198	462	14%
SMG & MSP	15	11	26	17	9	26	0%
PSS	210	171	381	247	189	436	14%
White	433	429	862	468	451	919	7%
Unclassified	0	2	2	1	0	1	-50%
Academic	127	182	309	138	202	340	10%
Non-Academic	306	245	551	329	249	578	5%
SMG & MSP	53	45	98	52	48	100	2%
PSS	253	200	453	277	201	478	6%
Unknown/Not Stated	21	35	56	12	22	34	-39%
Unclassified	0	0	0	0	0	0	0%
Academic	4	14	18	3	10	13	-28%
Non-Academic	17	21	38	9	12	21	-45%
SMG & MSP	1	3	4	1	1	2	-50%
PSS	16	18	34	8	11	19	-44%
Total Campus	945	931	1,876	1,045	988	2,033	8%
Unclassified	2	2	4	3	1	4	0%
Academic	205	347	552	228	365	593	7%
Non-Academic	738	582	1,320	814	622	1,436	9%
SMG & MSP	78	72	150	80	72	152	1%
PSS	660	510	1,170	734	550	1,284	10%

Table 11f: Personnel Headcount by Ethnicity, Personnel Program, and Gender: Riverside

	Oct 2010			Oct 2011			Percent Change
	Female	Male	Total	Female	Male	Total	
American Indian	25	17	42	24	15	39	-7%
Unclassified	0	0	0	0	0	0	0%
Academic	7	9	16	5	8	13	-19%
Non-Academic	18	8	26	19	7	26	0%
SMG & MSP	2	1	3	3	1	4	33%
PSS	16	7	23	16	6	22	-4%
Asian	804	976	1,780	798	925	1,723	-3%
Unclassified	0	0	0	0	0	0	0%
Academic	379	588	967	352	524	876	-9%
Non-Academic	425	388	813	446	401	847	4%
SMG & MSP	9	12	21	9	15	24	14%
PSS	416	376	792	437	386	823	4%
African American	345	215	560	304	207	511	-9%
Unclassified	0	0	0	0	0	0	0%
Academic	42	45	87	35	37	72	-17%
Non-Academic	303	170	473	269	170	439	-7%
SMG & MSP	6	8	14	9	7	16	14%
PSS	297	162	459	260	163	423	-8%
Hispanic	983	646	1,629	1,033	680	1,713	5%
Unclassified	0	0	0	1	1	2	0%
Academic	130	128	258	112	118	230	-11%
Non-Academic	853	518	1,371	920	561	1,481	8%
SMG & MSP	9	12	21	10	16	26	24%
PSS	844	506	1,350	910	545	1,455	8%
White	1,453	1,703	3,156	1,418	1,623	3,041	-4%
Unclassified	0	0	0	1	0	1	0%
Academic	539	931	1,470	517	866	1,383	-6%
Non-Academic	914	772	1,686	900	757	1,657	-2%
SMG & MSP	86	91	177	87	92	179	1%
PSS	828	681	1,509	813	665	1,478	-2%
Unknown/Not Stated	176	160	336	154	177	331	-1%
Unclassified	0	0	0	0	0	0	0%
Academic	100	97	197	94	113	207	5%
Non-Academic	76	63	139	60	64	124	-11%
SMG & MSP	3	2	5	1	0	1	-80%
PSS	73	61	134	59	64	123	-8%
Total Campus	3,786	3,717	7,503	3,731	3,627	7,358	-2%
Unclassified	0	0	0	2	1	3	0%
Academic	1,197	1,798	2,995	1,115	1,666	2,781	-7%
Non-Academic	2,589	1,919	4,508	2,614	1,960	4,574	1%
SMG & MSP	115	126	241	119	131	250	4%
PSS	2,474	1,793	4,267	2,495	1,829	4,324	1%

Table 11g: Personnel Headcount by Ethnicity, Personnel Program, and Gender: San Diego

	Oct 2010			Oct 2011			Percent Change
	Female	Male	Total	Female	Male	Total	
American Indian	87	57	144	86	57	143	-1%
Unclassified	0	0	0	0	0	0	0%
Academic	18	21	39	16	20	36	-8%
Non-Academic	69	36	105	70	37	107	2%
SMG & MSP	3	2	5	3	2	5	0%
PSS	66	34	100	67	35	102	2%
Asian	3,870	3,119	6,989	3,972	3,036	7,008	0%
Unclassified	7	5	12	9	5	14	17%
Academic	804	1,393	2,197	766	1,314	2,080	-5%
Non-Academic	3,059	1,721	4,780	3,197	1,717	4,914	3%
SMG & MSP	81	91	172	85	84	169	-2%
PSS	2,978	1,630	4,608	3,112	1,633	4,745	3%
African American	662	382	1,044	683	396	1,079	3%
Unclassified	0	0	0	2	0	2	0%
Academic	54	52	106	50	51	101	-5%
Non-Academic	608	330	938	631	345	976	4%
SMG & MSP	21	16	37	23	19	42	14%
PSS	587	314	901	608	326	934	4%
Hispanic	2,207	1,345	3,552	2,348	1,405	3,753	6%
Unclassified	3	4	7	2	1	3	-57%
Academic	201	283	484	180	270	450	-7%
Non-Academic	2,003	1,058	3,061	2,166	1,134	3,300	8%
SMG & MSP	43	29	72	41	29	70	-3%
PSS	1,960	1,029	2,989	2,125	1,105	3,230	8%
White	6,816	6,038	12,854	6,875	5,919	12,794	0%
Unclassified	14	17	31	17	13	30	-3%
Academic	1,698	2,921	4,619	1,642	2,770	4,412	-4%
Non-Academic	5,104	3,100	8,204	5,216	3,136	8,352	2%
SMG & MSP	415	466	881	398	493	891	1%
PSS	4,689	2,634	7,323	4,818	2,643	7,461	2%
Unknown/Not Stated	1,153	1,017	2,170	1,077	1,014	2,091	-4%
Unclassified	3	1	4	2	3	5	25%
Academic	316	494	810	389	575	964	19%
Non-Academic	834	522	1,356	686	436	1,122	-17%
SMG & MSP	21	36	57	30	35	65	14%
PSS	813	486	1,299	656	401	1,057	-19%
Total Campus	14,795	11,958	26,753	15,041	11,827	26,868	0%
Unclassified	27	27	54	32	22	54	0%
Academic	3,091	5,164	8,255	3,043	5,000	8,043	-3%
Non-Academic	11,677	6,767	18,444	11,966	6,805	18,771	2%
SMG & MSP	584	640	1,224	580	662	1,242	1%
PSS	11,093	6,127	17,220	11,386	6,143	17,529	2%

Table 11h: Personnel Headcount by Ethnicity, Personnel Program, and Gender: San Francisco

	Oct 2010			Oct 2011			Percent Change
	Female	Male	Total	Female	Male	Total	
American Indian	59	32	91	57	35	92	1%
Unclassified	0	0	0	0	0	0	0%
Academic	10	9	19	10	9	19	0%
Non-Academic	49	23	72	47	26	73	1%
SMG & MSP	2	3	5	2	3	5	0%
PSS	47	20	67	45	23	68	1%
Asian	4,808	2,862	7,670	4,898	2,909	7,807	2%
Unclassified	3	3	6	2	3	5	-17%
Academic	961	872	1,833	954	865	1,819	-1%
Non-Academic	3,844	1,987	5,831	3,942	2,041	5,983	3%
SMG & MSP	178	177	355	186	182	368	4%
PSS	3,666	1,810	5,476	3,756	1,859	5,615	3%
African American	856	440	1,296	880	446	1,326	2%
Unclassified	1	0	1	0	0	0	-100%
Academic	85	66	151	84	72	156	3%
Non-Academic	770	374	1,144	796	374	1,170	2%
SMG & MSP	45	20	65	39	22	61	-6%
PSS	725	354	1,079	757	352	1,109	3%
Hispanic	1,393	821	2,214	1,424	830	2,254	2%
Unclassified	0	0	0	0	0	0	0%
Academic	166	166	332	166	165	331	0%
Non-Academic	1,227	655	1,882	1,258	665	1,923	2%
SMG & MSP	36	41	77	40	43	83	8%
PSS	1,191	614	1,805	1,218	622	1,840	2%
White	6,436	4,019	10,455	6,468	4,035	10,503	0%
Unclassified	3	8	11	5	7	12	9%
Academic	1,655	1,935	3,590	1,629	1,926	3,555	-1%
Non-Academic	4,778	2,076	6,854	4,834	2,102	6,936	1%
SMG & MSP	574	436	1,010	592	435	1,027	2%
PSS	4,204	1,640	5,844	4,242	1,667	5,909	1%
Unknown/Not Stated	408	242	650	369	204	573	-12%
Unclassified	0	0	0	1	0	1	0%
Academic	108	115	223	99	101	200	-10%
Non-Academic	300	127	427	269	103	372	-13%
SMG & MSP	13	10	23	10	11	21	-9%
PSS	287	117	404	259	92	351	-13%
Total Campus	13,960	8,416	22,376	14,096	8,459	22,555	1%
Unclassified	7	11	18	8	10	18	0%
Academic	2,985	3,163	6,148	2,942	3,138	6,080	-1%
Non-Academic	10,968	5,242	16,210	11,146	5,311	16,457	2%
SMG & MSP	848	687	1,535	869	696	1,565	2%
PSS	10,120	4,555	14,675	10,277	4,615	14,892	1%

Table 11i: Personnel Headcount by Ethnicity, Personnel Program, and Gender: Santa Barbara

	Oct 2010			Oct 2011			Percent Change
	Female	Male	Total	Female	Male	Total	
American Indian	35	25	60	33	23	56	-7%
Unclassified	0	0	0	0	0	0	0%
Academic	10	5	15	10	7	17	13%
Non-Academic	25	20	45	23	16	39	-13%
SMG & MSP	2	2	4	2	1	3	-25%
PSS	23	18	41	21	15	36	-12%
Asian	601	631	1,232	621	613	1,234	0%
Unclassified	0	0	0	2	0	2	0%
Academic	207	374	581	192	353	545	-6%
Non-Academic	394	257	651	427	260	687	6%
SMG & MSP	10	10	20	13	12	25	25%
PSS	384	247	631	414	248	662	5%
African American	176	128	304	176	129	305	0%
Unclassified	0	0	0	1	0	1	0%
Academic	33	30	63	28	30	58	-8%
Non-Academic	143	98	241	147	99	246	2%
SMG & MSP	1	4	5	2	4	6	20%
PSS	142	94	236	145	95	240	2%
Hispanic	961	778	1,739	973	819	1,792	3%
Unclassified	1	1	2	1	2	3	50%
Academic	98	111	209	93	119	212	1%
Non-Academic	862	666	1,528	879	698	1,577	3%
SMG & MSP	11	14	25	14	15	29	16%
PSS	851	652	1,503	865	683	1,548	3%
White	2,578	2,958	5,536	2,536	2,883	5,419	-2%
Unclassified	6	3	9	4	2	6	-33%
Academic	829	1,437	2,266	798	1,453	2,251	-1%
Non-Academic	1,743	1,518	3,261	1,734	1,428	3,162	-3%
SMG & MSP	125	170	295	131	165	296	0%
PSS	1,618	1,348	2,966	1,603	1,263	2,866	-3%
Unknown/Not Stated	463	462	925	420	446	866	-6%
Unclassified	3	1	4	2	1	3	-25%
Academic	204	284	488	177	269	446	-9%
Non-Academic	256	177	433	241	176	417	-4%
SMG & MSP	2	0	2	0	0	0	-100%
PSS	254	177	431	241	176	417	-3%
Total Campus	4,814	4,982	9,796	4,759	4,913	9,672	-1%
Unclassified	10	5	15	10	5	15	0%
Academic	1,381	2,241	3,622	1,298	2,231	3,529	-3%
Non-Academic	3,423	2,736	6,159	3,451	2,677	6,128	-1%
SMG & MSP	151	200	351	162	197	359	2%
PSS	3,272	2,536	5,808	3,289	2,480	5,769	-1%

Table 11j: Personnel Headcount by Ethnicity, Personnel Program, and Gender: Santa Cruz

	Oct 2010			Oct 2011			Percent Change
	Female	Male	Total	Female	Male	Total	
American Indian	36	18	54	31	21	52	-4%
Unclassified	0	0	0	0	0	0	0%
Academic	17	6	23	14	5	19	-17%
Non-Academic	19	12	31	17	16	33	6%
SMG & MSP	1	1	2	1	1	2	0%
PSS	18	11	29	16	15	31	7%
Asian	492	419	911	509	457	966	6%
Unclassified	0	0	0	0	0	0	0%
Academic	167	176	343	166	190	356	4%
Non-Academic	325	243	568	343	267	610	7%
SMG & MSP	12	35	47	10	35	45	-4%
PSS	313	208	521	333	232	565	8%
African American	99	95	194	81	100	181	-7%
Unclassified	1	0	1	0	0	0	-100%
Academic	17	25	42	14	24	38	-10%
Non-Academic	81	70	151	67	76	143	-5%
SMG & MSP	1	3	4	1	3	4	0%
PSS	80	67	147	66	73	139	-5%
Hispanic	689	468	1,157	708	529	1,237	7%
Unclassified	0	0	0	0	0	0	0%
Academic	106	88	194	102	99	201	4%
Non-Academic	583	380	963	606	430	1,036	8%
SMG & MSP	8	10	18	8	9	17	-6%
PSS	575	370	945	598	421	1,019	8%
White	2,135	1,955	4,090	2,172	2,001	4,173	2%
Unclassified	0	2	2	0	0	0	-100%
Academic	616	837	1,453	656	885	1,541	6%
Non-Academic	1,519	1,116	2,635	1,516	1,116	2,632	0%
SMG & MSP	95	160	255	99	167	266	4%
PSS	1,424	956	2,380	1,417	949	2,366	-1%
Unknown/Not Stated	492	466	958	345	324	669	-30%
Unclassified	0	1	1	0	1	1	0%
Academic	187	255	442	121	166	287	-35%
Non-Academic	305	210	515	224	157	381	-26%
SMG & MSP	3	8	11	2	7	9	-18%
PSS	302	202	504	222	150	372	-26%
Total Campus	3,943	3,421	7,364	3,846	3,432	7,278	-1%
Unclassified	1	3	4	0	1	1	-75%
Academic	1,110	1,387	2,497	1,073	1,369	2,442	-2%
Non-Academic	2,832	2,031	4,863	2,773	2,062	4,835	-1%
SMG & MSP	120	217	337	121	222	343	2%
PSS	2,712	1,814	4,526	2,652	1,840	4,492	-1%

Table 11k: Personnel Headcount by Ethnicity, Personnel Program, and Gender: Office of the President

	Oct 2010			Oct 2011			Percent Change
	Female	Male	Total	Female	Male	Total	
American Indian	3	0	3	3	0	3	0%
Unclassified	0	0	0	0	0	0	0%
Academic	0	0	0	0	0	0	0%
Non-Academic	3	0	3	3	0	3	0%
SMG & MSP	3	0	3	2	0	2	-33%
PSS	0	0	0	1	0	1	0%
Asian	216	113	329	227	124	351	7%
Unclassified	0	0	0	0	2	2	0%
Academic	3	11	14	3	10	13	-7%
Non-Academic	213	102	315	224	112	336	7%
SMG & MSP	63	38	101	70	48	118	17%
PSS	150	64	214	154	64	218	2%
African American	141	48	189	156	44	200	6%
Unclassified	0	0	0	0	0	0	0%
Academic	0	0	0	0	0	0	0%
Non-Academic	141	48	189	156	44	200	6%
SMG & MSP	20	14	34	29	13	42	24%
PSS	121	34	155	127	31	158	2%
Hispanic	91	40	131	96	42	138	5%
Unclassified	0	0	0	0	0	0	0%
Academic	1	0	1	1	0	1	0%
Non-Academic	90	40	130	95	42	137	5%
SMG & MSP	22	16	38	28	18	46	21%
PSS	68	24	92	67	24	91	-1%
White	501	346	847	508	337	845	0%
Unclassified	1	0	1	1	0	1	0%
Academic	22	27	49	14	22	36	-27%
Non-Academic	478	319	797	493	315	808	1%
SMG & MSP	192	176	368	207	174	381	4%
PSS	286	143	429	286	141	427	0%
Unknown/Not Stated	47	40	87	46	37	83	-5%
Unclassified	0	0	0	0	0	0	0%
Academic	0	1	1	0	2	2	100%
Non-Academic	47	39	86	46	35	81	-6%
SMG & MSP	10	12	22	11	11	22	0%
PSS	37	27	64	35	24	59	-8%
Total Campus	999	587	1,586	1,036	584	1,620	2%
Unclassified	1	0	1	1	2	3	200%
Academic	26	39	65	18	34	52	-20%
Non-Academic	972	548	1,520	1,017	548	1,565	3%
SMG & MSP	310	256	566	347	264	611	8%
PSS	662	292	954	670	284	954	0%

Table 11I: Personnel Headcount by Ethnicity, Personnel Program, and Gender: Agriculture & Natural Resources

	Oct 2010			Oct 2011			Percent Change
	Female	Male	Total	Female	Male	Total	
American Indian	6	3	9	4	1	5	-44%
Unclassified	0	0	0	0	0	0	0%
Academic	1	1	2	1	0	1	-50%
Non-Academic	5	2	7	3	1	4	-43%
SMG & MSP	2	0	2	0	0	0	-100%
PSS	3	2	5	3	1	4	-20%
Asian	66	48	114	60	40	100	-12%
Unclassified	0	0	0	0	0	0	0%
Academic	16	20	36	11	18	29	-19%
Non-Academic	50	28	78	49	22	71	-9%
SMG & MSP	2	2	4	2	1	3	-25%
PSS	48	26	74	47	21	68	-8%
African American	33	14	47	26	14	40	-15%
Unclassified	0	0	0	0	0	0	0%
Academic	4	4	8	4	3	7	-13%
Non-Academic	29	10	39	22	11	33	-15%
SMG & MSP	3	0	3	1	0	1	-67%
PSS	26	10	36	21	11	32	-11%
Hispanic	137	97	234	126	87	213	-9%
Unclassified	0	0	0	0	1	1	0%
Academic	14	21	35	11	19	30	-14%
Non-Academic	123	76	199	115	67	182	-9%
SMG & MSP	2	2	4	1	2	3	-25%
PSS	121	74	195	114	65	179	-8%
White	498	361	859	441	314	755	-12%
Unclassified	0	0	0	0	0	0	0%
Academic	141	202	343	119	176	295	-14%
Non-Academic	357	159	516	322	138	460	-11%
SMG & MSP	18	8	26	11	6	17	-35%
PSS	339	151	490	311	132	443	-10%
Unknown/Not Stated	20	19	39	11	10	21	-46%
Unclassified	0	1	1	0	0	0	-100%
Academic	7	6	13	4	3	7	-46%
Non-Academic	13	12	25	7	7	14	-44%
SMG & MSP	0	0	0	0	0	0	0%
PSS	13	12	25	7	7	14	-44%
Total President and ANR	1,759	1,129	2,888	1,704	1,050	2,754	-5%
Unclassified	1	1	2	1	3	4	100%
Academic	209	293	502	168	253	421	-16%
Non-Academic	1,549	835	2,384	1,535	794	2,329	-2%
SMG & MSP	337	268	605	362	273	635	5%
PSS	1,212	567	1,779	1,173	521	1,694	-5%

Table 11m: Personnel Headcount by Ethnicity, Personnel Program, and Gender: University Total

	Oct 2010			Oct 2011			Percent Change
	Female	Male	Total	Female	Male	Total	
American Indian	582	346	928	586	336	922	-1%
Unclassified	1	1	2	0	0	0	-100%
Academic	131	113	244	140	105	245	0%
Non-Academic	450	232	682	446	231	677	-1%
SMG & MSP	28	21	49	31	19	50	2%
PSS	422	211	633	415	212	627	-1%
Asian	26,205	19,923	46,128	26,988	20,268	47,256	2%
Unclassified	63	51	114	75	60	135	18%
Academic	6,271	8,679	14,950	6,136	8,540	14,676	-2%
Non-Academic	19,871	11,193	31,064	20,777	11,668	32,445	4%
SMG & MSP	758	774	1,532	842	839	1,681	10%
PSS	19,113	10,419	29,532	19,935	10,829	30,764	4%
African American	6,761	3,750	10,511	6,874	3,835	10,709	2%
Unclassified	7	7	14	15	5	20	43%
Academic	628	567	1,195	647	565	1,212	1%
Non-Academic	6,126	3,176	9,302	6,212	3,265	9,477	2%
SMG & MSP	244	167	411	265	183	448	9%
PSS	5,882	3,009	8,891	5,947	3,082	9,029	2%
Hispanic	15,740	10,502	26,242	16,757	10,918	27,675	5%
Unclassified	15	14	29	27	17	44	52%
Academic	1,603	1,889	3,492	1,626	1,917	3,543	1%
Non-Academic	14,122	8,599	22,721	15,104	8,984	24,088	6%
SMG & MSP	319	272	591	350	284	634	7%
PSS	13,803	8,327	22,130	14,754	8,700	23,454	6%
White	47,259	39,839	87,098	47,558	39,713	87,271	0%
Unclassified	87	80	167	84	78	162	-3%
Academic	13,077	19,476	32,553	12,887	19,185	32,072	-1%
Non-Academic	34,095	20,283	54,378	34,587	20,450	55,037	1%
SMG & MSP	3,254	3,141	6,395	3,339	3,213	6,552	2%
PSS	30,841	17,142	47,983	31,248	17,237	48,485	1%
Unknown/Not Stated	8,001	6,927	14,928	7,072	6,296	13,368	-10%
Unclassified	57	63	120	53	40	93	-23%
Academic	2,703	3,550	6,253	2,466	3,413	5,879	-6%
Non-Academic	5,241	3,314	8,555	4,553	2,843	7,396	-14%
SMG & MSP	134	173	307	136	173	309	1%
PSS	5,107	3,141	8,248	4,417	2,670	7,087	-14%
Total University	104,548	81,287	185,835	105,835	81,366	187,201	1%
Unclassified	230	216	446	254	200	454	2%
Academic	24,413	34,274	58,687	23,902	33,725	57,627	-2%
Non-Academic	79,905	46,797	126,702	81,679	47,441	129,120	2%
SMG & MSP	4,737	4,548	9,285	4,963	4,711	9,674	4%
PSS	75,168	42,249	117,417	76,716	42,730	119,446	2%

Explanatory Notes

1. All enrollment counts consist of students who are registered at the end of the third week of classes. Students in the Education Abroad Program are included in the enrollment of each general campus.
2. Undergraduate students who have met all the requirements for admission to the University are classified according to the number of units of credit completed as follows:

Freshman	between 0 and 44.9 quarter units (0-29.9 semester units);
Sophomore	at least 45 but not more than 89.9 quarter units (30-59.9 semester units);
Junior	at least 90 but not more than 134.9 quarter units (60-89.9 semester units);
Senior	at least 135 quarter units (90 or more semester units).

In addition to those students who have met all of the requirements for admission to the University are Special, Limited, and Postbaccalaureate students who are defined as follows:

Special	lower division students of mature years who have not had the opportunity to complete a satisfactory high school program, who have not completed a substantial amount of college work, and who, by reason of special attainments, may be prepared to undertake courses in the University toward a definite and limited objective;
Limited	upper division students with bachelor's degrees who are not candidates for an advanced degree or those without bachelor's degrees who have completed a substantial amount of college work and who, by reason of special attainments, may be prepared to undertake certain courses in the University toward a definite and limited objective;
Postbaccalaureate	students who hold a baccalaureate degree whose sole objective is a teacher education credential.

For tables in this report, undergraduates in the groups above are aggregated into the following categories:

Lower Division	freshmen, sophomores, and special students;
Upper Division	juniors, seniors, and limited students;
Postbaccalaureate	postbaccalaureate students.

3. Graduate students are those students holding a bachelor's degree or its equivalent who have been admitted to the Graduate Division and who are working toward a higher degree or credential. Graduate students are classified according to degree objective and progress toward the degree as follows:

Master's	students working toward a master's degree, a certification credential, or a non-doctoral first professional degree (e.g., Juris Doctor, Master of Business Administration), and students who have no degree objective;
First Doctoral	students working toward an academic or professional doctorate (e.g., Doctor of Medicine, Doctor of Dental Science) who have not been advanced to candidacy;
Second Doctoral	students working toward an academic or professional doctorate who have been advanced to candidacy.

For enrollment tables in this report, graduate students in the groups above are aggregated into the following categories:

First Stage	master's and first doctoral students;
-------------	---------------------------------------

Second Stage second doctoral students.

4. Full-time status and part-time status of students registered at the University are defined as follows:

Full-time undergraduate students enrolled for 12 or more units of credit in a given term, first stage graduate students enrolled for 8 or more units of credit in a given term, and second stage graduate students;

Part-time undergraduate students enrolled for fewer than 12 units of credit in a term and first stage graduate students enrolled for fewer than 8 units of credit in a term.

5. The registration status of students registered at the University is classified as follows:

New students enrolled for the first time in regular session;

Continuing students enrolled in regular session whose enrollment at the reporting campus has not been interrupted;

Returning students returning to the reporting campus after an absence of two or more quarters. For some campuses, a student returning after an absence of one quarter will also be classified as a returning student.

6. University personnel are classified as follows:

Academic academic administrators, regular teaching faculty, lecturers and other teaching faculty, student assistants, researchers, librarians, Cooperative Extension researchers, university extension faculty, and other academic personnel;

Non-Academic senior management (SMG), management and senior professionals (MSP), and professional and support staff (PSS).

7. The University's instruction and research programs are organized into two broad categories, general campus and health sciences:

Health Sciences primarily offered through 15 schools providing education and training to students preparing for careers in clinical care, teaching, and research, as well as selected other programs;

General Campus all non-health sciences programs are categorized as general campus.