

# 2003 Annual Summaries

National Oceanic and Atmospheric Administration  
National Environmental Satellite Data Information Service  
National Climatic Data Center

## FLOOD/FLASH FLOOD



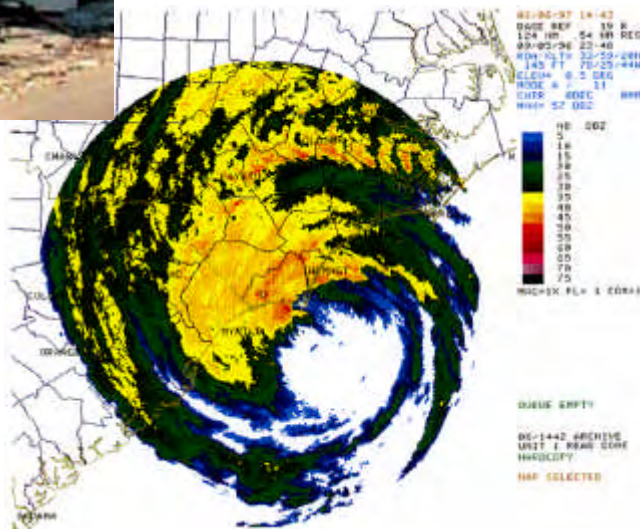
## Lightning



## Tornado



## Hurricane



# 2003 Annual Summaries

## Flood/Flash Flood

## Lightning

## Tornado

## Hurricane

All summaries are compiled from information contained in the Storm Data Publication.

Sources include the Storm Data Publication, the National Weather Service's Office Climate, Water and Weather Services.

**Edited by:** William Angel - Meteorologist, Editor-Storm Data, NCDC, Asheville, NC.

**Compiled and prepared by:** Stuart Hinson, Meteorologist and Rhonda Herndon  
Assistant Editors - Storm Data, NCDC, Asheville, NC.

**With help from:** Brent MacAloney, Meteorologist, National Weather Service, Silver Spring, MD.  
Melody Magnus, Webmaster, Office of Services, National Weather Service, Silver Spring, MD.

**Published by:**

National Climatic Data Center  
**Federal Building**  
**151 Patton Avenue**  
**Asheville, NC 28801**  
**((828) 271-4800**





## Summary of Natural Hazard Statistics for 2003 in the United States



This National Weather Service (NWS) report summarizes fatalities, injuries and damages caused by severe weather in 2003. The NWS Office of Climate, Water and Weather Services and the National Climatic Data Center compiled this *Summary of U.S. Natural Hazard Statistics* from Storm Data, a report comprising statistics from NWS forecast offices in the 50 states, Puerto Rico, Guam, and the Virgin Islands.

### Summary of 2003 Weather Events, Fatalities, Injuries, and Damage Costs

LAST UPDATED : 6/17/2004

<u>Weather Event</u>	<u>Fatalities</u>	<u>Injuries</u>	<u>Amount of Property Damage (M)</u>	<u>Amount of Crop Damage (M)</u>	<u>Total Prop/Crop Damage (M)</u>
<b><u>Convection</u></b>					
Lightning	43	236	\$ 25.7	\$ 0.0	\$ 25.7
Tornado	54	1087	1,265.6	15.9	1,281.5
Tstm Wind	19	226	355.8	66.5	422.3
Hail	0	121	522.5	110.0	632.5
<b><u>Extreme Temperatures</u></b>					
Cold	20	14	0.9	28.2	29.1
Heat	36	174	0.0	0.0	0.0
<b><u>Flood</u></b>					
Flash Flood	67	61	2,123.9	18.3	2,142.2
River Flood	18	5	418.7	139.8	558.5
Small Stream/Urban Flood	1	4	0.5	0.0	0.5
<b><u>Marine</u></b>					
Coastal Storm	14	6	11.4	0.0	11.4
Tsunami	0	0	0.0	0.0	0.0
Rip Current	41	47	0.0	0.0	0.0
<b><u>Tropical Cyclones</u></b>					
Tropical Storm/Hurricane	14	233	1,879.5	40.8	1,920.3
<b><u>Winter</u></b>					
Winter Storm	28	112	499.4	8.6	508.0
Ice	0	0	0.0	0.0	0.0
Avalanche	9	7	0.0	0.0	0.0
<b><u>Other</u></b>					
Drought	0	0	645.2	572.5	1,217.7
Dust Storm	2	91	0.3	0.0	0.3
Dust Devil	1	3	0.1	0.0	0.1
Rain	5	34	8.4	69.8	78.2
Fog	0	0	0.0	0.0	0.0
High Wind	24	156	166.2	41.0	207.2
Waterspout	0	0	0.0	0.0	0.0
Fire Weather	0	2	2,331.6	0.0	2,331.6
Mud Slide	15	16	5.6	0.0	5.6
Volcanic Ash	0	0	0.0	0.0	0.0
Miscellaneous	27	289	7.8	31.2	39.0
<b>TOTALS</b>	<b>438</b>	<b>2924</b>	<b>\$10,269.1M</b>	<b>\$1,142.6M</b>	<b>\$11,411.7M</b>

## **Summary of 2003 Natural Hazard Statistics**

In 2003, there were 438 weather-related fatalities, a significant decrease from 542 in 2002, and moderately below the 10-year average (1994-2003) of 521. In a departure from the previous 5 years, extreme heat ranked as one of least dangerous weather-related killers. In 2003, flooding took the most lives, claiming 86 weather related victims. The next biggest killer in 2003 was tornadoes with 54 fatalities, followed by lightning with 43 deaths and rip currents with 41.

Weather-related injuries dropped in 2003 to 2,924 from 3,089 in 2002. Tornadoes were by far the largest source of injuries with 1,087 (37%). Coming a distant second, third and fourth for weather related injuries with 8% each were lightning, tropical storms/hurricanes and thunderstorm winds.

In 2003, severe weather caused \$11.4 billion in damages, up from \$5.7 billion in 2002. Fire weather--contributing to wildfires--was the most costly severe weather, accounting for an estimated \$2.330 billion in losses and displacing tropical storms/hurricanes as the most expensive weather in 2002. Flooding was the next most expensive weather, accounting for \$2.142 billion in damages. California suffered the highest weather related property and crop damages totaling \$2.351 billion in losses, mostly due to wildfires and flooding.

Of the 438 weather-related fatalities, males accounted for about twice as many deaths as females. As in the past, males were affected more by weather in all categories except cold and tornadoes. Cold and heat most heavily impacts the elderly and tornadoes were hazardous to even those in permanent homes. Deaths spanned the age ranges, hitting those under 20 most lightly.

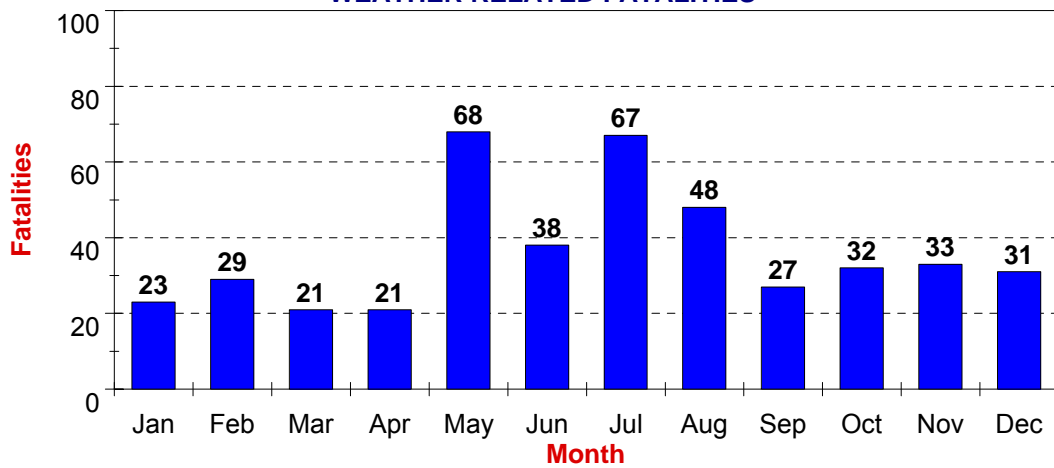
March was the deadliest month with 68 fatalities, 38 of which were from tornado events occurring on 5/4/2003 in Kansas, Tennessee, and Missouri. In 2003, California and Florida were hardest hit by weather, losing 56 and 51 citizens, respectively. California was hit heavily by wildfires with additional losses to floods and heat. Florida, as in the past, is impacted heavily by rip currents and lightning.

## 2003 Summary of all Natural Hazards

### 2003 SUMMARY OF FATALITIES FOR ALL HAZARDS BY AGE AND GENDER

	FEMALE	MALE	UNKNOWN	TOTAL	PERCENT
0 TO 9	14	22	0	36	8
10 TO 19	13	34	0	47	11
20 TO 29	15	35	0	50	11
30 TO 39	21	47	0	68	16
40 TO 49	24	37	0	61	14
50 TO 59	16	39	0	55	13
60 TO 69	15	22	0	37	8
70 TO 79	13	22	0	35	8
80 TO 89	10	10	0	20	5
90 TO --	2	3	0	5	1
UNKNOWN	3	19	2	24	5
<b>TOTAL</b>	<b>146</b>	<b>290</b>	<b>2</b>	<b>438</b>	<b>100</b>
<b>PERCENT</b>	<b>33</b>	<b>66</b>	<b>0</b>	<b>100</b>	

### 2003 MONTHLY WEATHER RELATED FATALITIES



## 2003 Lightning Fatalities

In 2003, there were 43 lightning fatalities, 8 less than the 2002 total of 51. The 2003 number falls significantly below the 10-year average of 51 fatalities. For the 6th consecutive year, Florida was hardest hit with 10 fatalities (23%); Colorado recorded 6 deaths (13%) and North Carolina lost 5 citizens (12%). The most dangerous place to be in 2003 was in the open, with 18 deaths (42%); under a tree, 8 (19%) or in water, 5 (12%). In 2003, as in 2002, more than three times as many men (33) as woman (10) were killed by lightning. The 20-39 age range accounted for 44% of the fatalities with 19 deaths.

### 2003 LIGHTNING FATALITIES BY STATE AND LOCATION

<u>STATE</u>	<u>BF</u>	<u>BO</u>	<u>CA</u>	<u>EQ</u>	<u>GF</u>	<u>IW</u>	<u>OT</u>	<u>OU</u>	<u>TE</u>	<u>UT</u>	<u>TOTAL</u>
CA	0	0	0	1	0	0	0	0	0	0	1
CO	0	0	0	0	1	0	0	2	0	3	6
FL	2	0	0	0	0	1	1	5	0	1	10
GA	0	0	0	0	0	0	0	2	0	0	2
GU	0	0	0	0	0	1	0	0	0	0	1
IA	0	0	1	0	0	0	0	0	0	0	1
MI	0	0	0	0	0	0	0	1	0	0	1
NC	0	1	0	0	0	0	3	1	0	0	5
NM	0	0	0	0	0	0	0	1	0	0	1
OH	0	0	0	0	0	0	1	0	0	0	1
OK	0	0	0	0	0	0	0	2	0	0	2
SD	0	0	0	0	0	1	0	0	0	0	1
TX	0	0	0	0	0	0	1	1	0	2	4
UT	0	0	0	0	0	1	0	0	0	2	3
VA	0	0	0	0	0	0	0	1	0	0	1
VI	0	0	0	0	0	1	0	0	0	0	1
WY	0	0	0	0	0	0	0	2	0	0	2
<b>TOTAL</b>	<b>2</b>	<b>1</b>	<b>1</b>	<b>1</b>	<b>1</b>	<b>5</b>	<b>6</b>	<b>18</b>	<b>0</b>	<b>8</b>	<b>43</b>
<b>PERCENT</b>	<b>5</b>	<b>2</b>	<b>2</b>	<b>2</b>	<b>2</b>	<b>12</b>	<b>14</b>	<b>42</b>	<b>0</b>	<b>19</b>	<b>100</b>

### 2003 LIGHTNING FATALITIES BY AGE AND GENDER

	<u>FEMALE</u>	<u>MALE</u>	<u>UNKNOWN</u>	<u>TOTAL</u>	<u>PERCENT</u>
0 TO 9	0	1	0	1	2
10 TO 19	2	4	0	6	14
20 TO 29	2	8	0	10	23
30 TO 39	3	6	0	9	21
40 TO 49	2	4	0	6	14
50 TO 59	0	6	0	6	14
60 TO 69	1	2	0	3	7
70 TO 79	0	1	0	1	2
80 TO 89	0	0	0	0	0
90 TO --	0	0	0	0	0
UNKNOWN	0	1	0	1	2
<b>TOTAL</b>	<b>10</b>	<b>33</b>	<b>0</b>	<b>43</b>	<b>99 *</b>
<b>PERCENT</b>	<b>23</b>	<b>77</b>	<b>0</b>	<b>100</b>	

(\* Due to rounding total does not equal 100%)

#### LEGEND

**BF** - Ball Field  
**BO** - Boat  
**CA** - Camping  
**EQ** - Nr Hvy Equipment  
**GF** - Golf  
**IW** - In Water  
**OT** - Other/Unknown  
**OU** - Outside Open  
**TE** - At Telephone  
**UT** - Under Tree

## 2003 Tornado Fatalities

### 2003 TORNADO FATALITIES BY STATE AND LOCATION

<u>STATE</u>	<u>BU</u>	<u>LS</u>	<u>MH</u>	<u>OT</u>	<u>OU</u>	<u>PH</u>	<u>SC</u>	<u>VE</u>	<u>TOTAL</u>
FL	0	0	0	0	0	1	0	0	1
GA	0	0	6	0	0	0	0	0	6
IL	0	0	1	0	0	1	0	0	2
KS	0	0	1	0	0	7	0	0	8
KY	0	0	3	0	0	0	0	0	3
MO	0	0	4	1	2	12	0	0	19
NE	0	0	0	1	0	1	0	0	2
NJ	0	0	0	0	1	0	0	0	1
TN	0	0	10	0	0	2	0	0	12
<b>TOTAL</b>	<b>0</b>	<b>0</b>	<b>25</b>	<b>2</b>	<b>3</b>	<b>24</b>	<b>0</b>	<b>0</b>	<b>54</b>
<b>PERCENT</b>	<b>0</b>	<b>0</b>	<b>46</b>	<b>4</b>	<b>6</b>	<b>44</b>	<b>0</b>	<b>0</b>	<b>100</b>

### 2003 TORNADO FATALITIES BY AGE AND GENDER

	<u>FEMALE</u>	<u>MALE</u>	<u>UNKNOWN</u>	<u>TOTAL</u>	<u>PERCENT</u>
0 TO 9	0	6	0	6	11
10 TO 19	0	0	0	0	0
20 TO 29	5	0	0	5	9
30 TO 39	1	3	0	4	7
40 TO 49	8	5	0	13	24
50 TO 59	2	5	0	7	13
60 TO 69	3	2	0	5	9
70 TO 79	4	4	0	8	15
80 TO 89	2	4	0	6	11
90 TO --	0	0	0	0	0
UNKNOWN	0	0	0	0	0
<b>TOTAL</b>	<b>25</b>	<b>29</b>	<b>0</b>	<b>54</b>	<b>99*</b>
<b>PERCENT</b>	<b>46</b>	<b>54</b>	<b>0</b>	<b>100</b>	

(\* Due to rounding total does not equal 100%)

#### **LEGEND**

**BU** - Business  
**LS** - Long-Span Roof  
**MH** - Mobile Home  
**OT** - Other/Unknown  
**OU** - Outside Open  
**PH** - Permanent Home  
**SC** - School  
**VE** - Vehicle

## 2003 Flash Flood / River Flood Related Fatalities

In 2003, flooding (flash floods, river floods, and urban/small stream floods) was the most hazardous weather, causing 86 fatalities, up from 49 in 2002. This total is 37 more than in 2002 and just above the 10-year average of 84 deaths. Of the 86 fatalities, 45% (39) victims were in vehicles and 24% (21) were directly in water. Kansas, Mississippi and North Carolina suffered the highest number of fatalities with seven each, followed closely by California, Puerto Rico, Tennessee, Virginia and West Virginia with six each. Flash floods caused 67 deaths and river floods caused 18, with one death attributed to small stream or urban flooding. The 30- to 39-age group suffered the most loss with 16 fatalities. Of the victims, 58 (67%) were male and 28 (33%) were female.

### 2003 FLASH FLOOD / RIVER FLOOD FATALITIES BY STATE AND LOCATION

<u>STATE</u>	<u>BO</u>	<u>BU</u>	<u>CA</u>	<u>IW</u>	<u>MH</u>	<u>OT</u>	<u>PH</u>	<u>VE</u>	<u>TOTAL</u>
AL	0	0	0	0	0	0	0	1	1
AS	0	0	0	0	0	4	0	0	4
AZ	0	0	0	1	0	1	0	1	3
CA	0	0	0	1	0	2	0	3	6
FL	0	0	0	1	0	0	0	0	1
GA	0	0	0	0	0	0	0	2	2
IL	0	0	0	0	0	0	0	1	1
IN	0	0	0	4	0	0	0	0	4
KS	0	0	0	7	0	0	0	0	7
KY	0	0	0	0	2	1	0	1	4
LA	0	0	0	1	0	0	0	0	1
MD	0	0	0	0	0	4	0	0	4
MO	0	0	0	0	0	0	0	1	1
MS	0	0	0	0	0	0	0	1	1
NC	0	0	0	0	0	1	0	6	7
NY	0	0	0	0	0	0	0	7	7
OH	0	0	0	0	0	1	3	0	4
PA	0	0	0	0	0	0	0	2	2
PR	1	0	0	3	0	1	0	1	6
TN	0	0	0	0	0	0	0	6	6
TX	0	0	0	0	0	0	0	2	2
VA	0	0	0	2	2	1	0	1	6
WV	0	0	0	1	0	2	0	3	6
<b>TOTAL</b>	<b>1</b>	<b>0</b>	<b>0</b>	<b>21</b>	<b>4</b>	<b>18</b>	<b>3</b>	<b>39</b>	<b>86</b>
<b>PERCENT</b>	<b>1</b>	<b>0</b>	<b>0</b>	<b>24</b>	<b>5</b>	<b>21</b>	<b>3</b>	<b>45</b>	<b>99*</b>

(\* Due to rounding total does not equal 100%)

### 2003 FLASH FLOOD / RIVER FLOOD FATALITIES BY AGE AND GENDER

	<u>FEMALE</u>	<u>MALE</u>	<u>UNKNOWN</u>	<u>TOTAL</u>	<u>PERCENT</u>
0 TO 9	6	8	0	14	16
10 TO 19	3	12	0	15	17
20 TO 29	2	8	0	10	12
30 TO 39	6	8	0	14	16
40 TO 49	3	7	0	10	12
50 TO 59	2	2	0	4	5
60 TO 69	5	5	0	10	12
70 TO 79	1	3	0	4	5
80 TO 89	0	2	0	2	2
90 TO --	0	0	0	0	0
UNKNOWN	0	3	0	3	3
<b>TOTAL</b>	<b>28</b>	<b>58</b>	<b>0</b>	<b>86</b>	<b>100</b>
<b>PERCENT</b>	<b>33</b>	<b>67</b>	<b>0</b>	<b>100</b>	

#### LEGEND

**BO** - Boat  
**BU** - Business  
**CA** - Camping  
**IW** - In Water  
**MH** - Mobile Home  
**OT** - Other/Unknown  
**PH** - Permanent Home  
**VE** - Vehicle



## 2003 Flash Flood / River Flood Related Fatalities (Continued)

### 2003 FLASH FLOOD / RIVER FLOOD FATALITIES BY STATE

<u>STATE</u>	<u>FLASH FLOOD</u>	<u>RIVER FLOOD</u>	<u>TOTAL</u>
AL	1	0	1
AS	4	0	4
AZ	3	0	3
CA	5	1	6
FL	1	0	1
GA	2	0	2
IL	1	0	1
IN	2	2	4
KS	7	0	7
KY	4	0	4
LA	1	0	1
MD	4	0	4
MO	1	0	1
MS	1	0	1
NC	7	0	7
NY	5	2	7
OH	4	0	4
PA	1	1	2
PR	4	2	6
TN	4	2	6
TX	2	0	2
VA	2	4	6
WV	1	5	6
<b>TOTAL</b>	<b>67</b>	<b>19</b>	<b>86</b>
<b>PERCENT</b>	<b>78</b>	<b>22</b>	<b>100</b>

### 2003 FLASH FLOOD / RIVER FLOOD FATALITIES BY GENDER

	<u>FLASH FLOOD</u>	<u>RIVER FLOOD</u>	<u>TOTAL</u>	<u>PERCENT</u>
FEMALE	23	5	28	33
MALE	44	14	58	67
UNKNOWN	0	0	0	0
<b>TOTAL</b>	<b>67</b>	<b>19</b>	<b>86</b>	<b>100</b>
<b>PERCENT</b>	<b>78</b>	<b>22</b>	<b>100</b>	

## 2003 Winter Weather Related Fatalities

In 2003, there were 28 winter weather deaths, up 11 from 2002, reversing the downward trend of the previous 5 years. The 2003 total is still significantly lower than the 10-year average of 44 fatalities. Kansas logged by far the highest death toll with six. The most hazardous place to be in the winter of 2003 was in a vehicle, which accounted for 68% (19) of the winter weather victims. The hardest hit age group was seniors aged 60-79, who accounted for 36 percent of deaths. There were no ice related deaths in 2003 but avalanches accounted for nine fatalities.

### 2003 WINTER STORM FATALITIES BY STATE AND LOCATION

<u>STATE</u>	<u>LS</u>	<u>MH</u>	<u>OT</u>	<u>OU</u>	<u>PH</u>	<u>VE</u>	<u>TOTAL</u>
KS	0	0	1	0	0	5	6
KY	0	0	1	0	0	0	1
MD	0	0	0	2	0	2	4
MI	0	0	0	1	0	0	1
ND	0	0	0	0	0	3	3
NJ	0	0	0	1	0	0	1
NY	0	0	0	0	0	1	1
PA	0	0	0	2	0	0	2
SC	0	0	0	0	0	1	1
UT	0	0	0	0	0	3	3
VA	0	0	0	1	0	1	2
VT	0	0	0	0	0	1	1
WY	0	0	0	0	0	2	2
<b>TOTAL</b>	<b>0</b>	<b>0</b>	<b>2</b>	<b>7</b>	<b>0</b>	<b>19</b>	<b>28</b>
<b>PERCENT</b>	<b>0</b>	<b>0</b>	<b>7</b>	<b>25</b>	<b>0</b>	<b>68</b>	<b>100</b>

### 2003 WINTER STORM FATALITIES BY AGE AND GENDER

	<u>FEMALE</u>	<u>MALE</u>	<u>UNKNOWN</u>	<u>TOTAL</u>	<u>PERCENT</u>
0 TO 9	0	1	0	1	4
10 TO 19	1	0	0	1	4
20 TO 29	2	2	0	4	14
30 TO 39	1	1	0	2	7
40 TO 49	2	2	0	4	14
50 TO 59	2	0	0	2	7
60 TO 69	2	3	0	5	18
70 TO 79	3	2	0	5	18
80 TO 89	0	0	0	0	0
90 TO --	0	0	0	0	0
UNKNOWN	0	4	0	4	14
<b>TOTAL</b>	<b>13</b>	<b>15</b>	<b>0</b>	<b>28</b>	<b>100</b>
<b>PERCENT</b>	<b>46</b>	<b>54</b>	<b>0</b>	<b>100</b>	

#### LEGEND

**LS** - Long-Span Roof  
**MH** - Mobile Home  
**OT** - Other/Unknown  
**OU** - Outside Open  
**PH** - Permanent Home  
**VE** - Vehicle

## 2003 Tropical Cyclone Fatalities

### 2003 TROPICAL CYCLONE FATALITIES BY STATE AND LOCATION

<u>STATE</u>	<u>BO</u>	<u>BU</u>	<u>IW</u>	<u>LS</u>	<u>MH</u>	<u>OT</u>	<u>OU</u>	<u>PH</u>	<u>SC</u>	<u>VE</u>	<u>TOTAL</u>
GU	0	0	1	0	0	0	1	0	0	0	2
MD	0	0	1	0	0	0	0	0	0	0	1
NC	0	0	0	0	0	0	0	0	0	2	2
NY	0	0	1	0	0	0	0	0	0	0	1
TX	0	0	0	0	0	0	1	0	0	0	1
VA	0	0	1	0	1	0	3	1	0	1	7
<b>TOTAL</b>	<b>0</b>	<b>0</b>	<b>4</b>	<b>0</b>	<b>1</b>	<b>0</b>	<b>5</b>	<b>1</b>	<b>0</b>	<b>3</b>	<b>14</b>
<b>PERCENT</b>	<b>0</b>	<b>0</b>	<b>29</b>	<b>0</b>	<b>7</b>	<b>0</b>	<b>36</b>	<b>7</b>	<b>0</b>	<b>21</b>	<b>100</b>

### 2003 TROPICAL CYCLONE FATALITIES BY AGE AND GENDER

	<u>FEMALE</u>	<u>MALE</u>	<u>UNKNOWN</u>	<u>TOTAL</u>	<u>PERCENT</u>
0 TO 9	0	0	0	0	0
10 TO 19	0	1	0	1	7
20 TO 29	0	3	0	3	21
30 TO 39	1	1	0	2	14
40 TO 49	1	4	0	5	36
50 TO 59	0	2	0	2	14
60 TO 69	0	1	0	1	7
70 TO 79	0	0	0	0	0
80 TO 89	0	0	0	0	0
90 TO --	0	0	0	0	0
UNKNOWN	0	0	0	0	0
<b>TOTAL</b>	<b>2</b>	<b>12</b>	<b>0</b>	<b>14</b>	<b>99 *</b>
<b>PERCENT</b>	<b>14</b>	<b>86</b>	<b>0</b>	<b>100</b>	

(\* Due to rounding total does not equal 100%)

#### **LEGEND**

**BO** - Boat  
**BU** - Business  
**IW** - In Water  
**LS** - Long-Span Roof  
**MH** - Mobile Home  
**OT** - Other/Unknown  
**OU** - Outside Open  
**PH** - Permanent Home  
**SC** - School  
**VE** - Vehicle

## 2003 Wind Related Fatalities

Wind related fatalities totaled 43 in 2003; down 2 from the 2002 total of 45. By far the most dangerous place to be in 2003 during a thunderstorm or wind event was a vehicle; this category accounted for 49% (21) fatalities. High winds caused 56% of deaths and thunderstorm winds accounted for 44%. Georgia and Pennsylvania each recorded the most wind related deaths at six each. Almost twice as many males as females died from thunderstorm and high winds. The hardest hit age ranges were 50-59 with 23 deaths, and 30-39 with 21.

### 2003 HIGH WIND AND THUNDERSTORM WIND FATALITIES BY STATE AND LOCATION

<u>STATE</u>	<u>BO</u>	<u>CA</u>	<u>LS</u>	<u>MH</u>	<u>OT</u>	<u>OU</u>	<u>PH</u>	<u>SC</u>	<u>VE</u>	<u>TOTAL</u>
AM	0	0	0	0	2	0	0	0	0	2
CA	0	0	0	0	0	1	0	0	1	2
GA	0	0	0	0	1	0	0	0	5	6
IA	0	1	0	0	0	0	0	0	0	1
IN	0	0	0	1	0	0	0	0	0	1
MD	0	0	0	0	0	1	0	0	0	1
MN	0	1	0	0	0	0	0	0	0	1
MO	0	0	0	1	1	0	0	0	0	2
NE	0	0	0	0	0	0	0	0	1	1
NH	0	0	0	0	0	0	0	0	2	2
NJ	0	0	0	0	0	0	0	0	1	1
NM	0	0	0	0	0	0	0	0	1	1
NY	0	0	1	0	1	0	0	0	1	3
OH	0	0	0	0	2	0	0	0	0	2
PA	0	0	0	0	0	1	0	0	5	6
TN	0	0	0	0	0	0	1	0	1	2
TX	0	0	1	0	0	1	0	0	2	4
VA	0	0	0	0	0	0	1	0	0	1
WA	0	0	0	1	0	0	0	0	1	2
WI	2	0	0	0	0	0	0	0	0	2
<b>TOTAL</b>	<b>2</b>	<b>2</b>	<b>2</b>	<b>3</b>	<b>7</b>	<b>4</b>	<b>2</b>	<b>0</b>	<b>21</b>	<b>43</b>
<b>PERCENT</b>	<b>5</b>	<b>5</b>	<b>5</b>	<b>7</b>	<b>16</b>	<b>9</b>	<b>5</b>	<b>0</b>	<b>49</b>	<b>101*</b>

(\* Due to rounding total does not equal 100%)

### 2003 HIGH WIND AND THUNDERSTORM WIND FATALITIES BY AGE AND GENDER

	<u>FEMALE</u>	<u>MALE</u>	<u>UNKNOWN</u>	<u>TOTAL</u>	<u>PERCENT</u>
0 TO 9	0	4	0	4	9
10 TO 19	0	3	0	3	7
20 TO 29	1	2	0	3	7
30 TO 39	4	5	0	9	21
40 TO 49	2	1	0	3	7
50 TO 59	4	6	0	10	23
60 TO 69	0	0	0	0	0
70 TO 79	1	2	0	3	7
80 TO 89	1	0	0	1	2
90 TO --	0	1	0	1	2
UNKNOWN	1	3	2	6	14
<b>TOTAL</b>	<b>14</b>	<b>27</b>	<b>2</b>	<b>43</b>	<b>99*</b>
<b>PERCENT</b>	<b>33</b>	<b>63</b>	<b>5</b>	<b>100</b>	

(\* Due to rounding total does not equal 100%)

#### LEGEND

**BO** - Boat  
**CA** - Camping  
**LS** - Long-Span Roof  
**MH** - Mobile Home  
**OT** - Other/Unknown  
**OU** - Outside Open  
**PH** - Permanent Home  
**SC** - School  
**VE** - Vehicle

## 2003 Wind Related Fatalities (Continued)

### 2003 HIGH WIND AND THUNDERSTORM WIND FATALITIES BY STATE

<u>STATE</u>	<u>TSTM WIND</u>	<u>HIGH WIND</u>	<u>TOTAL</u>
AM	2	0	2
CA	0	2	2
GA	5	1	6
IA	0	1	1
IN	1	0	1
MD	0	1	1
MN	1	0	1
MO	1	1	2
NE	0	1	1
NH	0	2	2
NJ	0	1	1
NM	0	1	1
NY	1	2	3
OH	2	0	2
PA	1	5	6
TN	2	0	2
TX	2	2	4
VA	1	0	1
WA	0	2	2
WI	0	2	2
<b>TOTAL</b>	<b>19</b>	<b>24</b>	<b>43</b>
<b>PERCENT</b>	<b>44</b>	<b>56</b>	<b>100</b>

### 2003 HIGH WIND AND THUNDERSTORM WIND FATALITIES BY GENDER

	<u>TSTM WIND</u>	<u>HIGH WIND</u>	<u>TOTAL</u>	<u>PERCENT</u>
FEMALE	6	8	14	33
MALE	13	14	27	63
UNKNOWN	0	2	2	5
<b>TOTAL</b>	<b>19</b>	<b>24</b>	<b>43</b>	<b>100</b>
<b>PERCENT</b>	<b>44</b>	<b>56</b>	<b>100</b>	

## 2003 Heat Related Fatalities

After six years, heat lost its ranking as the most deadly weather hazard. In 2003, only 36 lives were claimed by excessive heat, down dramatically from 167 in 2002. The 10-year average for heat related fatalities is 237, compared to 84 for floods, the most deadly weather hazard in 2003. In 2003, 44% (16) of the fatalities occurred in permanent homes and 36% (13) outside. Missouri was by far the deadliest place for heat, accounting for 33% (12) of the deaths. As in the past, excessive heat most severely affects the elderly. Those aged 70 and up accounted for 44 percent of deaths. Twice as many males 67% (24) succumbed as females 33% (12).

### 2003 HEAT RELATED FATALITIES BY STATE AND LOCATION

<u>STATE</u>	<u>BF</u>	<u>CA</u>	<u>GF</u>	<u>MH</u>	<u>OT</u>	<u>OU</u>	<u>PH</u>	<u>VE</u>	<u>TOTAL</u>
CA	0	0	0	0	0	5	0	0	5
FL	1	0	0	0	0	0	0	0	1
IL	0	0	0	0	0	1	3	0	4
MO	0	0	0	0	3	3	6	0	12
NV	0	0	0	0	0	2	0	1	3
OK	0	0	0	0	2	1	0	0	3
PA	0	0	0	0	0	0	7	0	7
VA	0	0	0	0	0	1	0	0	1
<b>TOTAL</b>	<b>1</b>	<b>0</b>	<b>0</b>	<b>0</b>	<b>5</b>	<b>13</b>	<b>16</b>	<b>1</b>	<b>36</b>
<b>PERCENT</b>	<b>3</b>	<b>0</b>	<b>0</b>	<b>0</b>	<b>14</b>	<b>36</b>	<b>44</b>	<b>3</b>	<b>100</b>

### 2003 HEAT RELATED FATALITIES BY AGE AND GENDER

	<u>FEMALE</u>	<u>MALE</u>	<u>UNKNOWN</u>	<u>TOTAL</u>	<u>PERCENT</u>
0 TO 9	1	0	0	1	3
10 TO 19	1	1	0	2	6
20 TO 29	0	1	0	1	3
30 TO 39	0	2	0	2	6
40 TO 49	0	2	0	2	6
50 TO 59	0	6	0	6	17
60 TO 69	0	2	0	2	6
70 TO 79	2	3	0	5	14
80 TO 89	5	3	0	8	22
90 TO --	2	1	0	3	8
UNKNOWN	1	3	0	4	11
<b>TOTAL</b>	<b>12</b>	<b>24</b>	<b>0</b>	<b>36</b>	<b>102*</b>
<b>PERCENT</b>	<b>33</b>	<b>67</b>	<b>0</b>	<b>100</b>	

(\* Due to rounding total does not equal 100%)

#### LEGEND

**BF** - Ball Field  
**CA** - Camping  
**GF** - Golf  
**MH** - Mobile Home  
**OT** - Other/Unknown  
**OU** - Outside Open  
**PH** - Permanent Home  
**VE** - Vehicle

## 2003 Cold Related Fatalities

In 2003, 20 people died from hypothermia, compared to 11 in 2002. This total is still below the 10-year average for cold related fatalities: 27. For the second year in a row, Michigan suffered the most deaths with 5, followed by Illinois and Pennsylvania with 4. Of those deaths, 11 (55%) occurred outside. The death toll was even between males and females with 10 each. Senior aged 70-79 were the hardest hit group with 25% of deaths.

### 2003 COLD RELATED FATALITIES BY STATE AND LOCATION

<u>STATE</u>	<u>IW</u>	<u>MH</u>	<u>OT</u>	<u>OU</u>	<u>PH</u>	<u>VE</u>	<u>TOTAL</u>
AL	0	0	0	1	0	0	1
FL	0	0	0	1	0	0	1
IL	0	0	3	1	0	0	4
MI	0	0	0	5	0	0	5
MS	0	0	0	1	0	0	1
ND	0	0	1	1	0	0	2
NE	0	0	0	1	0	0	1
NJ	0	0	0	0	0	1	1
PA	0	0	0	0	4	0	4
<b>TOTAL</b>	<b>0</b>	<b>0</b>	<b>4</b>	<b>11</b>	<b>4</b>	<b>1</b>	<b>20</b>
<b>PERCENT</b>	<b>0</b>	<b>0</b>	<b>20</b>	<b>55</b>	<b>20</b>	<b>5</b>	<b>100</b>

### 2003 COLD RELATED FATALITIES BY AGE AND GENDER

	<u>FEMALE</u>	<u>MALE</u>	<u>UNKNOWN</u>	<u>TOTAL</u>	<u>PERCENT</u>
0 TO 9	0	0	0	0	0
10 TO 19	1	0	0	1	5
20 TO 29	0	1	0	1	5
30 TO 39	1	0	0	1	5
40 TO 49	1	2	0	3	15
50 TO 59	0	3	0	3	15
60 TO 69	2	0	0	2	10
70 TO 79	2	3	0	5	25
80 TO 89	2	1	0	3	15
90 TO --	0	0	0	0	0
UNKNOWN	1	0	0	1	5
<b>TOTAL</b>	<b>10</b>	<b>10</b>	<b>0</b>	<b>20</b>	<b>100</b>
<b>PERCENT</b>	<b>50</b>	<b>50</b>	<b>0</b>	<b>100</b>	

#### LEGEND

**IW** - In Water  
**MH** - Mobile Home  
**OT** - Other/Unknown  
**OU** - Outside Open  
**PH** - Permanent Home  
**VE** - Vehicle



# TOTAL LIGHTNING DEATHS BY STATE AND NATION FOR YEAR 2003



STATE	JAN	FEB	MAR	APR	MAY	JUN	JUL	AUG	SEP	OCT	NOV	DEC	ANN
ALABAMA	0	0	0	0	0	0	0	0	0	0	0	0	0
ALASKA	0	0	0	0	0	0	0	0	0	0	0	0	0
ARIZONA	0	0	0	0	0	0	0	0	0	0	0	0	0
ARKANSAS	0	0	0	0	0	0	0	0	0	0	0	0	0
CALIFORNIA	0	0	0	0	0	0	1	0	0	0	0	0	1
COLORADO	0	0	0	0	1	0	3	2	0	0	0	0	6
CONNECTICUT	0	0	0	0	0	0	0	0	1	0	0	0	1
DELAWARE	0	0	0	0	0	0	0	0	0	0	0	0	0
DISTRICT OF COLUMBIA	0	0	0	0	0	0	0	0	0	0	0	0	0
FLORIDA	0	0	0	1	0	2	1	3	2	1	0	0	10
GEORGIA	0	0	0	0	0	0	1	1	0	0	0	0	2
HAWAII	0	0	0	0	0	0	0	0	0	0	0	0	0
IDAHO	0	0	0	0	0	0	0	0	0	0	0	0	0
ILLINOIS	0	0	0	0	0	0	0	0	0	0	0	0	0
INDIANA	0	0	0	0	0	0	0	0	0	0	0	0	0
IOWA	0	0	0	1	0	0	0	0	0	0	0	0	1
KANSAS	0	0	0	0	0	0	0	0	0	0	0	0	0
KENTUCKY	0	0	0	0	0	0	0	0	0	1	0	0	1
LOUISIANA	0	0	0	0	0	0	0	0	0	0	0	0	0
MAINE	0	0	0	0	0	0	0	0	0	0	0	0	0
MARYLAND	0	0	0	0	0	0	0	0	0	0	0	0	0
MASSACHUSETTS	0	0	0	0	0	0	0	0	0	0	0	0	0
MICHIGAN	0	0	0	0	0	0	0	1	0	0	0	0	1
MINNESOTA	0	0	0	0	0	0	0	0	0	0	0	0	0
MISSISSIPPI	0	0	0	0	0	0	0	0	0	0	0	0	0
MISSOURI	0	0	0	0	0	0	0	0	0	0	0	0	0
MONTANA	0	0	0	0	0	0	0	0	0	0	0	0	0
NEBRASKA	0	0	0	0	0	0	0	0	0	0	0	0	0
NEVADA	0	0	0	0	0	0	0	0	0	0	0	0	0
NEW HAMPSHIRE	0	0	0	0	0	0	0	0	0	0	0	0	0
NEW JERSEY	0	0	0	0	0	0	0	0	0	0	0	0	0
NEW MEXICO	0	0	0	0	0	0	0	1	0	0	0	0	1
NEW YORK	0	0	0	0	0	0	0	0	0	0	0	0	0
NORTH CAROLINA	0	0	0	0	0	1	3	1	0	0	0	0	5
NORTH DAKOTA	0	0	0	0	0	0	0	0	0	0	0	0	0
OHIO	0	0	0	0	0	0	0	1	0	0	0	0	1
OKLAHOMA	0	0	0	1	0	0	0	1	0	0	0	0	2
OREGON	0	0	0	0	0	0	0	0	0	0	0	0	0
PENNSYLVANIA	0	0	0	0	0	0	0	0	0	0	0	0	0
PUERTO RICO	0	0	0	0	0	0	0	0	0	0	0	0	0
RHODE ISLAND	0	0	0	0	0	0	0	0	0	0	0	0	0
SOUTH CAROLINA	0	0	0	0	0	0	0	0	0	0	0	0	0
SOUTH DAKOTA	0	0	0	0	0	0	1	0	0	0	0	0	1
TENNESSEE	0	0	0	0	0	0	0	0	0	0	0	0	0
TEXAS	0	1	0	0	1	0	1	0	2	0	0	0	5
UTAH	0	0	0	0	0	0	2	0	0	1	0	0	3
VERMONT	0	0	0	0	0	0	0	0	0	0	0	0	0
VIRGINIA	0	0	0	0	0	0	0	1	0	0	0	0	1
WASHINGTON	0	0	0	0	0	0	0	0	0	0	0	0	0
WEST VIRGINIA	0	0	0	0	0	0	0	0	0	0	0	0	0
WISCONSIN	0	0	0	0	0	0	0	0	0	0	0	0	0
WYOMING	0	0	0	0	0	1	1	0	0	0	0	0	2
TOTAL: UNITED STATES	0	1	0	3	2	4	14	12	5	3	0	0	44





# TOTAL LIGHTNING INJURIES BY STATE AND NATION FOR YEAR 2003



STATE	JAN	FEB	MAR	APR	MAY	JUN	JUL	AUG	SEP	OCT	NOV	DEC	ANN
ALABAMA	0	0	0	0	0	0	2	1	0	0	0	0	3
ALASKA	0	0	0	0	0	0	0	0	0	0	0	0	0
ARIZONA	0	0	0	0	0	0	1	0	0	0	0	0	1
ARKANSAS	0	0	0	0	1	0	1	0	0	0	0	0	2
CALIFORNIA	0	0	0	0	0	0	1	0	0	0	0	1	2
COLORADO	0	0	0	0	1	0	4	7	0	0	0	0	12
CONNECTICUT	0	0	0	0	0	0	0	0	0	0	0	0	0
DELAWARE	0	0	0	0	0	0	0	0	0	0	0	0	0
DISTRICT OF COLUMBIA	0	0	0	0	0	0	0	0	0	0	0	0	0
FLORIDA	0	0	0	2	1	6	9	10	10	0	1	0	39
GEORGIA	0	0	0	0	1	2	1	3	0	0	0	0	7
HAWAII	0	0	0	0	0	0	0	0	0	0	0	0	0
IDAHO	0	0	0	0	0	0	0	1	0	0	0	0	1
ILLINOIS	0	0	0	1	0	0	2	0	0	0	0	0	3
INDIANA	0	0	0	0	0	0	0	2	0	0	0	0	2
IOWA	0	0	0	1	0	0	0	0	0	0	0	0	1
KANSAS	0	0	0	0	0	0	0	1	2	0	0	0	3
KENTUCKY	0	0	0	0	0	0	0	5	0	1	0	0	6
LOUISIANA	0	0	0	1	1	0	0	0	0	0	0	0	2
MAINE	0	4	0	0	0	0	0	1	0	0	0	0	5
MARYLAND	0	0	0	0	0	0	3	2	0	0	0	0	5
MASSACHUSETTS	0	0	0	0	0	0	0	2	0	0	0	0	2
MICHIGAN	0	0	0	0	0	0	6	2	0	0	0	0	8
MINNESOTA	0	0	0	0	0	1	0	0	0	0	0	0	1
MISSISSIPPI	0	0	0	0	1	0	0	0	0	0	0	0	1
MISSOURI	0	0	0	0	0	0	0	0	0	0	0	0	0
MONTANA	0	0	0	0	0	1	0	5	0	0	0	0	6
NEBRASKA	0	0	0	0	0	0	0	0	0	0	0	0	0
NEVADA	0	0	0	0	0	0	0	0	0	0	0	0	0
NEW HAMPSHIRE	0	0	0	0	0	0	0	26	0	0	0	0	26
NEW JERSEY	0	0	0	0	1	2	0	3	0	0	0	0	6
NEW MEXICO	0	0	0	0	0	0	0	1	0	0	0	0	1
NEW YORK	0	0	0	0	0	1	0	2	1	0	0	0	4
NORTH CAROLINA	0	3	0	0	1	1	9	10	0	0	0	0	24
NORTH DAKOTA	0	0	0	0	0	0	0	0	1	0	0	0	1
OHIO	0	0	0	0	0	2	0	1	0	0	0	0	3
OKLAHOMA	0	0	0	0	0	3	0	0	0	0	0	0	3
OREGON	0	0	0	2	0	0	0	0	0	0	0	0	2
PENNSYLVANIA	0	0	0	0	0	0	6	3	0	0	0	0	9
PUERTO RICO	0	0	0	0	0	0	0	0	0	0	0	0	0
RHODE ISLAND	0	0	0	0	0	0	0	0	0	0	0	0	0
SOUTH CAROLINA	0	0	0	0	1	0	2	0	0	0	0	0	3
SOUTH DAKOTA	0	0	0	0	0	0	2	0	0	0	0	0	2
TENNESSEE	0	0	0	0	0	0	0	0	0	0	0	0	0
TEXAS	0	0	0	0	2	0	2	0	1	0	0	0	5
UTAH	0	0	0	0	0	0	3	1	0	0	0	0	4
VERMONT	0	0	0	0	0	0	0	0	0	0	0	0	0
VIRGINIA	0	0	1	0	1	0	0	2	0	0	0	0	4
WASHINGTON	0	0	0	0	1	0	0	0	0	0	0	0	1
WEST VIRGINIA	0	0	8	0	0	0	0	0	0	0	0	0	8
WISCONSIN	0	0	0	0	0	0	11	1	0	0	0	0	12
WYOMING	0	0	0	0	0	1	5	0	0	0	0	0	6
TOTAL: UNITED STATES	0	7	9	7	13	20	70	92	15	1	1	1	236



# TOTAL LIGHTNING DEATHS BY STATE AND NATION FOR PERIOD 1959-2003



STATE	JAN	FEB	MAR	APR	MAY	JUN	JUL	AUG	SEP	OCT	NOV	DEC	ANN
ALABAMA	0	0	1	3	4	14	11	9	2	1	0	0	45
ALASKA	0	0	0	0	0	0	0	0	0	0	0	0	0
ARIZONA	0	0	0	0	4	0	8	8	9	2	0	1	32
ARKANSAS	0	1	8	0	2	15	18	15	4	0	0	0	63
CALIFORNIA	0	0	0	0	1	2	4	1	7	0	0	0	15
COLORADO	0	0	0	2	4	12	31	18	7	1	0	0	75
CONNECTICUT	0	0	0	0	1	2	3	2	1	0	0	0	9
DELAWARE	0	0	0	0	3	1	2	3	0	0	0	0	9
DISTRICT OF COLUMBIA	0	0	0	0	0	2	1	1	0	0	0	0	4
FLORIDA	0	0	4	6	8	55	74	66	38	3	0	0	254
GEORGIA	0	0	3	2	5	11	20	12	2	1	0	0	56
HAWAII	0	0	0	0	0	0	0	0	0	3	0	0	3
IDAHO	0	0	0	0	0	4	3	1	1	0	0	0	9
ILLINOIS	0	1	0	3	3	18	9	13	5	1	0	0	53
INDIANA	0	0	1	2	3	10	10	10	4	2	0	0	42
IOWA	0	0	0	2	5	10	2	12	1	2	0	0	34
KANSAS	0	0	0	3	3	6	7	2	1	1	3	0	26
KENTUCKY	0	0	0	2	3	10	9	9	12	1	0	0	46
LOUISIANA	1	1	1	4	6	17	26	3	11	0	2	2	74
MAINE	0	0	0	0	0	1	4	4	0	3	0	0	12
MARYLAND	0	0	0	0	2	5	8	7	2	1	0	81	106
MASSACHUSETTS	0	0	0	0	1	4	2	5	1	0	0	0	13
MICHIGAN	0	0	0	1	2	14	22	15	7	0	0	0	61
MINNESOTA	0	0	0	1	2	9	6	11	2	1	0	0	32
MISSISSIPPI	0	0	3	1	6	8	19	10	5	0	0	0	52
MISSOURI	0	0	4	0	7	17	8	11	1	1	0	0	49
MONTANA	0	0	0	0	0	5	8	0	1	0	0	0	14
NEBRASKA	0	0	0	0	1	8	7	6	3	0	0	0	25
NEVADA	0	0	0	0	1	1	0	1	1	0	0	0	4
NEW HAMPSHIRE	0	0	0	0	0	0	0	0	0	0	0	0	0
NEW JERSEY	0	0	0	1	3	3	7	8	5	0	0	0	27
NEW MEXICO	0	0	0	0	3	6	13	27	2	0	0	0	51
NEW YORK	0	0	1	0	4	12	35	19	5	2	0	0	78
NORTH CAROLINA	0	1	2	0	7	13	31	23	4	0	0	0	81
NORTH DAKOTA	0	0	0	0	0	3	3	1	0	0	0	0	7
OHIO	0	0	0	4	5	14	22	15	9	2	2	0	73
OKLAHOMA	1	0	0	4	6	8	8	17	10	2	0	0	56
OREGON	0	0	0	0	1	0	0	0	2	0	0	0	3
PENNSYLVANIA	0	0	0	1	2	11	22	14	8	2	0	0	60
PUERTO RICO	0	0	0	0	0	0	2	6	0	0	0	0	8
RHODE ISLAND	0	0	0	0	0	0	1	0	2	0	0	0	3
SOUTH CAROLINA	0	0	1	0	3	6	14	11	9	0	0	0	44
SOUTH DAKOTA	0	0	0	0	4	3	3	1	2	2	0	0	15
TENNESSEE	0	1	0	6	7	23	16	14	12	2	1	0	82
TEXAS	0	2	2	10	18	12	27	18	12	2	0	0	103
UTAH	0	0	0	1	1	4	9	7	4	1	0	0	27
VERMONT	0	0	0	0	0	1	2	2	0	0	0	0	5
VIRGINIA	0	0	0	1	1	4	8	9	3	0	0	0	26
WASHINGTON	0	0	0	1	0	1	1	0	1	0	0	0	4
WEST VIRGINIA	0	0	0	0	3	4	5	4	1	0	0	0	17
WISCONSIN	0	0	1	1	0	7	8	13	2	0	0	1	33
WYOMING	0	0	0	0	0	5	7	5	3	0	0	0	20
TOTAL: UNITED STATES	2	7	32	62	145	401	566	469	224	39	8	85	2040



# TOTAL LIGHTNING INJURIES BY STATE AND NATION FOR PERIOD 1959-2003



STATE	JAN	FEB	MAR	APR	MAY	JUN	JUL	AUG	SEP	OCT	NOV	DEC	ANN
ALABAMA	1	2	11	4	14	28	72	37	18	4	1	0	192
ALASKA	0	0	0	0	0	0	1	1	0	0	0	0	2
ARIZONA	0	1	0	0	4	6	18	43	22	10	1	3	108
ARKANSAS	1	2	3	7	9	25	23	41	8	0	0	1	120
CALIFORNIA	1	0	7	2	1	4	12	8	19	1	1	1	57
COLORADO	0	0	0	4	29	73	92	92	18	5	0	0	313
CONNECTICUT	1	1	2	1	2	7	18	8	18	3	0	0	61
DELAWARE	0	0	0	0	7	6	3	2	1	0	0	0	19
DISTRICT OF COLUMBIA	0	0	0	0	0	13	0	1	0	0	1	0	15
FLORIDA	0	2	17	22	50	213	306	207	155	39	2	2	1015
GEORGIA	3	51	4	4	33	58	87	46	8	5	0	1	300
HAWAII	0	1	0	0	0	0	0	4	0	0	3	0	8
IDAHO	0	0	0	0	0	18	12	13	6	1	0	0	50
ILLINOIS	1	1	0	3	14	38	32	49	27	6	0	0	171
INDIANA	0	0	2	1	16	22	37	27	10	0	0	0	115
IOWA	0	0	0	7	12	28	14	11	6	1	0	0	79
KANSAS	0	0	5	4	6	15	31	20	29	2	2	0	114
KENTUCKY	0	0	1	3	11	17	43	19	8	1	0	0	103
LOUISIANA	4	1	8	26	16	19	35	27	10	7	2	2	157
MAINE	0	14	0	0	4	18	40	20	0	0	1	0	97
MARYLAND	1	0	1	2	6	31	28	29	4	3	0	0	105
MASSACHUSETTS	0	0	0	1	14	43	72	56	26	0	0	1	213
MICHIGAN	0	0	2	10	26	77	119	66	31	9	0	0	340
MINNESOTA	0	0	1	0	9	16	49	18	2	5	0	0	100
MISSISSIPPI	1	0	4	2	12	8	51	16	9	3	7	1	114
MISSOURI	0	1	1	9	5	14	13	17	8	1	4	0	73
MONTANA	0	0	0	0	4	9	6	7	1	1	0	0	28
NEBRASKA	0	0	0	2	13	7	9	13	3	0	0	0	47
NEVADA	0	0	0	0	3	2	8	3	1	0	0	0	17
NEW HAMPSHIRE	0	0	1	0	1	5	41	43	0	0	0	0	91
NEW JERSEY	1	0	0	3	13	9	23	39	19	0	0	0	107
NEW MEXICO	0	0	0	1	3	12	52	57	6	1	0	0	132
NEW YORK	0	0	1	1	25	91	96	121	29	6	1	0	371
NORTH CAROLINA	2	5	19	5	20	72	120	116	22	2	1	0	384
NORTH DAKOTA	0	0	0	0	1	1	6	3	3	0	0	0	14
OHIO	0	0	3	5	34	67	64	98	53	4	12	0	340
OKLAHOMA	6	0	1	7	19	25	27	34	28	21	8	2	178
OREGON	0	0	0	2	1	0	0	10	1	0	0	0	14
PENNSYLVANIA	1	1	0	0	27	117	102	46	45	3	0	0	342
PUERTO RICO	0	0	0	0	0	0	0	2	0	0	0	0	2
RHODE ISLAND	0	0	0	1	0	4	5	9	3	0	1	0	23
SOUTH CAROLINA	0	0	0	6	12	18	53	34	17	0	1	0	141
SOUTH DAKOTA	0	0	0	2	3	12	14	7	1	2	0	0	41
TENNESSEE	1	3	7	25	30	15	87	48	9	6	2	0	233
TEXAS	2	3	5	7	28	40	56	56	45	8	3	0	253
UTAH	0	0	0	1	8	17	13	19	7	1	0	0	66
VERMONT	0	0	0	0	0	5	5	2	0	0	0	0	12
VIRGINIA	0	0	5	4	9	30	68	29	9	0	0	0	154
WASHINGTON	0	0	0	1	1	13	4	14	1	0	1	1	36
WEST VIRGINIA	0	0	8	10	1	7	40	36	0	1	0	0	103
WISCONSIN	0	1	1	6	3	51	61	41	7	3	0	0	174
WYOMING	0	0	0	1	2	24	17	16	8	0	0	0	68
TOTAL: UNITED STATES	27	90	120	202	561	1450	2185	1781	761	165	55	15	7412



## NATIONAL TOTAL LIGHTNING DEATHS BY YEAR FOR PERIOD 1959-2003



YEAR	JAN	FEB	MAR	APR	MAY	JUN	JUL	AUG	SEP	OCT	NOV	DEC	ANN
1959	0	0	0	1	8	13	27	11	10	5	0	0	75
1960	0	0	0	2	0	19	12	8	7	0	0	0	48
1961	0	0	0	1	1	18	25	8	8	0	0	0	61
1962	0	0	0	1	4	7	14	16	5	1	0	0	48
1963	0	0	4	1	2	26	16	12	7	1	0	81*	150
1964	0	0	9	2	2	8	10	10	7	1	0	0	49
1965	0	0	2	3	6	19	16	9	2	0	0	0	57
1966	0	0	1	0	0	7	12	10	7	2	0	0	39
1967	0	0	1	1	1	6	10	6	1	0	0	1	27
1968	0	0	0	0	4	10	14	12	7	3	0	1	51
1969	0	0	0	3	2	6	15	6	11	3	0	0	46
1970	0	0	0	0	7	14	12	5	11	1	0	0	50
1971	0	0	1	0	4	16	15	9	17	0	0	0	62
1972	0	0	1	1	2	14	14	19	0	0	0	0	51
1973	0	1	0	1	4	10	17	7	7	2	1	0	50
1974	0	1	0	5	4	16	18	10	3	0	1	0	58
1975	0	0	1	0	2	8	16	5	5	1	0	0	38
1976	0	0	0	1	4	5	9	10	3	2	0	0	34
1977	0	0	0	1	4	8	7	31	8	0	0	0	59
1978	0	0	0	0	0	9	16	15	3	1	0	0	44
1979	0	0	0	0	4	0	7	7	4	2	0	0	24
1980	0	0	0	0	3	9	14	11	2	0	0	0	39
1981	0	0	0	4	2	9	4	15	5	0	1	0	40
1982	1	0	0	1	1	4	11	12	2	1	0	0	33
1983	0	0	1	2	2	6	15	16	5	1	1	0	49
1984	0	0	0	1	3	5	12	6	5	0	1	0	33
1985	0	0	0	2	5	7	13	3	4	0	0	0	34
1986	0	0	0	2	4	4	9	11	2	0	0	0	32
1987	0	0	0	0	6	6	15	7	0	1	0	0	35
1988	0	0	0	0	3	2	9	12	1	1	2	0	30
1989	0	0	0	1	5	3	4	7	2	1	0	0	23
1990	0	0	2	0	2	9	10	7	9	0	0	0	39
1991	0	0	0	1	2	6	13	11	3	0	0	0	36
1992	0	0	0	2	1	3	6	8	5	0	0	0	25
1993	0	0	0	0	5	2	4	5	4	0	0	0	20
1994	0	0	0	1	4	3	13	6	4	1	0	0	32
1995	0	0	0	4	4	3	16	9	7	0	0	0	43
1996	1	0	0	4	3	18	8	13	4	0	0	1	52
1997	0	1	0	1	6	10	12	8	4	0	0	0	42
1998	0	1	2	2	3	12	9	12	2	0	0	1	44
1999	0	0	1	3	7	8	15	10	1	0	1	0	46
2000	0	0	4	0	1	13	15	12	4	2	0	0	51
2001	0	1	2	4	3	7	6	11	12	0	0	0	46
2002	0	1	0	0	3	9	17	19	2	0	0	0	51
2003	0	1	0	3	2	4	14	13	5	2	0	0	44
TOTAL	2	7	32	62	145	401	566	470	227	35	8	85	2040
MEAN	0	0	1	1	3	9	13	10	5	1	0	2	45

\* ON DECEMBER 8, 1963 THE CRASH OF A JETLINER KILLING 81 PEOPLE NEAR ELKIN, MARYLAND, WAS ATTRIBUTED TO LIGHTNING BY THE CIVIL AERONAUTICS BOARD INVESTIGATORS.



## NATIONAL TOTAL LIGHTNING INJURIES BY YEAR FOR PERIOD 1959-2003



YEAR	JAN	FEB	MAR	APR	MAY	JUN	JUL	AUG	SEP	OCT	NOV	DEC	ANN
1959	0	0	0	1	14	31	40	26	18	3	1	0	134
1960	0	0	0	2	0	29	11	27	13	6	3	0	91
1961	0	0	5	1	8	40	48	35	26	1	1	1	166
1962	0	0	0	1	8	13	48	20	5	5	0	0	100
1963	0	0	0	1	6	54	22	27	18	1	0	0	129
1964	0	0	7	3	2	11	31	33	7	0	1	0	95
1965	1	2	0	0	8	28	29	31	14	0	0	0	113
1966	0	1	0	0	2	22	25	28	12	1	0	0	91
1967	0	0	0	1	5	20	22	8	3	1	0	1	61
1968	0	0	1	0	8	26	48	28	11	9	1	0	132
1969	0	0	0	4	6	29	19	14	6	0	0	1	79
1970	0	0	1	0	13	30	35	23	33	4	1	0	140
1971	0	1	0	0	6	34	30	28	17	1	1	0	118
1972	0	0	4	4	6	16	20	34	3	2	1	0	90
1973	0	0	9	1	7	11	24	38	23	9	1	0	123
1974	1	2	0	2	1	15	28	25	9	1	0	0	84
1975	0	0	0	0	9	10	49	24	22	1	0	0	115
1976	0	1	0	4	6	19	27	29	3	1	0	1	91
1977	0	0	0	0	5	19	26	46	41	0	1	0	138
1978	0	0	0	1	2	19	28	20	39	5	0	0	114
1979	0	0	2	4	9	9	27	22	4	2	0	0	79
1980	0	1	1	8	4	25	29	102	16	0	0	0	186
1981	0	0	1	4	19	23	80	39	5	1	12	0	184
1982	1	0	2	3	4	8	12	16	8	4	4	1	63
1983	0	0	23	3	11	8	43	73	12	30	0	0	203
1984	0	0	1	4	5	26	57	22	40	0	1	0	156
1985	0	0	0	2	33	38	29	24	23	0	0	0	149
1986	0	2	4	1	9	24	43	25	11	1	0	0	120
1987	0	0	0	4	11	31	49	60	31	2	1	1	190
1988	0	0	0	1	16	7	69	47	2	4	0	0	146
1989	0	0	4	5	10	26	83	35	6	4	2	0	175
1990	0	0	2	2	8	20	64	31	24	1	0	0	152
1991	0	0	0	9	12	52	61	48	24	1	0	0	207
1992	0	0	2	4	30	8	50	37	24	6	0	0	161
1993	1	0	0	1	9	45	55	23	11	1	0	1	147
1994	0	1	0	21	27	33	96	69	23	13	4	1	288
1995	4	1	3	16	18	25	96	50	17	0	3	0	233
1996	2	3	4	12	36	102	66	49	21	6	6	2	309
1997	3	12	7	8	8	69	109	48	27	11	4	0	306
1998	1	3	9	24	28	81	69	45	16	4	2	3	285
1999	3	0	3	8	34	42	67	67	15	3	1	0	243
2000	0	52	6	6	28	90	66	70	34	12	0	0	364
2001	9	0	6	10	45	86	105	77	24	7	1	0	370
2002	1	1	4	9	12	76	80	66	5	0	1	1	256
2003	0	7	9	7	13	20	70	92	16	0	1	1	236
TOTAL	27	90	120	202	561	1450	2185	1781	762	164	55	15	7412
MEAN	1	2	3	4	12	32	49	40	17	4	1	0	165



# LIGHTNING DEATHS BY STATE, RANK, AND LOCATION OF OCCURRENCE 1959-2003



2003

STATE	RANK	OPEN FIELDS, BALL PARKS AND OPEN SPACES		UNDER TREES		BOATING, FISHING AND WATER RELATED		NEAR TRACTORS HEAVY ROAD EQUIPMENT		GOLF COURSES		AT TELEPHONES		VARIOUS OTHER AND UNKNOWN LOCATIONS		OPEN FIELDS, BALL PARKS AND OPEN SPACES		UNDER TREES		BOATING, FISHING AND WATER RELATED		NEAR TRACTORS HEAVY ROAD EQUIPMENT		GOLF COURSES		AT TELEPHONES		VARIOUS OTHER AND UNKNOWN LOCATIONS	
		NO.	%	NO.	%	NO.	%	NO.	%	NO.	%	NO.	%	NO.	%	NO.	%	NO.	%	NO.	%	NO.	%	NO.	%	NO.	%	NO.	%
ALABAMA	20	11	24	12	27	8	18	1	2	0	0	0	0	13	29	0	0	0	0	0	0	0	0	0	0	0	0	0	0
ALASKA	55	0	0	0	0	0	0	0	0	0	0	0	0	0	0	0	0	0	0	0	0	0	0	0	0	0	0	0	0
ARIZONA	26	16	50	2	6	1	3	1	3	3	9	2	6	7	22	0	0	0	0	0	0	0	0	0	0	0	0	0	0
ARKANSAS	10	21	33	11	17	2	3	5	8	2	3	0	0	22	35	0	0	0	0	0	0	0	0	0	0	0	0	0	0
CALIFORNIA	35	3	20	3	20	1	7	2	13	0	0	0	0	6	40	0	0	0	0	0	0	0	0	0	0	0	1	100	
COLORADO	7	32	43	14	19	3	4	2	3	5	7	0	0	19	25	1	17	0	0	1	17	0	0	0	0	0	4	67	
CONNECTICUT	42	2	25	0	0	0	0	0	0	1	13	0	0	5	63	0	0	0	0	0	0	0	0	0	0	0	0	0	0
DELAWARE	40	4	44	0	0	3	33	0	0	0	0	0	0	2	22	0	0	0	0	0	0	0	0	0	0	0	0	0	0
DIST OF COLUMBIA	47	1	25	2	50	0	0	0	0	1	25	0	0	0	0	0	0	0	0	0	0	0	0	0	0	0	0	0	0
FLORIDA	1	69	27	35	14	66	26	20	8	9	4	0	0	55	22	4	40	2	20	3	30	1	10	0	0	0	0	0	0
GEORGIA	14	21	38	9	16	8	14	5	9	2	4	1	2	10	18	2	100	0	0	0	0	0	0	0	0	0	0	0	0
HAWAII	54	0	0	0	0	0	0	0	0	0	0	0	0	0	0	0	0	0	0	0	0	0	0	0	0	0	0	0	0
IDAHO	39	1	11	1	11	1	11	5	56	1	11	0	0	0	0	0	0	0	0	0	0	0	0	0	0	0	0	0	0
ILLINOIS	15	13	25	13	25	3	6	4	8	4	8	1	2	15	28	0	0	0	0	0	0	0	0	0	0	0	0	0	0
INDIANA	22	9	21	16	38	2	5	3	7	1	2	0	0	11	26	0	0	0	0	0	0	0	0	0	0	0	0	0	0
IOWA	23	6	18	1	3	1	3	5	15	1	3	0	0	20	59	0	0	0	0	0	0	0	0	0	0	0	1	100	
KANSAS	30	11	42	0	0	4	15	3	12	0	0	0	0	8	31	0	0	0	0	0	0	0	0	0	0	0	0	0	0
KENTUCKY	19	10	22	4	9	2	4	2	4	2	4	1	2	24	53	0	0	0	0	0	0	0	0	0	0	0	0	0	0
LOUISIANA	8	6	8	26	35	19	26	6	8	0	0	0	0	17	23	0	0	0	0	0	0	0	0	0	0	0	0	0	0
MAINE	38	0	0	0	0	5	42	0	0	0	0	0	0	7	58	0	0	0	0	0	0	0	0	0	0	0	0	0	0
MARYLAND	2	7	7	4	4	10	9	1	1	0	0	1	1	83	78	0	0	0	0	0	0	0	0	0	0	0	0	0	0
MASSACHUSETTS	37	4	31	1	8	0	0	0	0	1	8	1	8	6	46	0	0	0	0	0	0	0	0	0	0	0	0	0	0
MICHIGAN	11	17	28	15	25	8	13	3	5	6	10	2	3	10	16	1	100	0	0	0	0	0	0	0	0	0	0	0	0
MINNESOTA	25	13	41	7	22	3	9	3	9	2	6	1	3	3	9	0	0	0	0	0	0	0	0	0	0	0	0	0	0
MISSISSIPPI	16	16	31	13	25	7	13	4	8	0	0	0	0	12	23	0	0	0	0	0	0	0	0	0	0	0	0	0	0
MISSOURI	18	10	20	9	18	8	16	2	4	2	4	1	2	17	35	0	0	0	0	0	0	0	0	0	0	0	0	0	0
MONTANA	36	5	36	2	14	1	7	4	29	0	0	0	0	2	14	0	0	0	0	0	0	0	0	0	0	0	0	0	0
NEBRASKA	31	11	44	2	8	2	8	6	24	0	0	0	0	4	16	0	0	0	0	0	0	0	0	0	0	0	0	0	0
NEVADA	46	0	0	0	0	0	0	0	0	1	25	0	0	3	75	0	0	0	0	0	0	0	0	0	0	0	0	0	0
NEW HAMPSHIRE	53	0	0	0	0	0	0	0	0	0	0	0	0	0	0	0	0	0	0	0	0	0	0	0	0	0	0	0	0
NEW JERSEY	28	8	30	6	22	5	19	0	0	2	7	0	0	6	22	0	0	0	0	0	0	0	0	0	0	0	0	0	0
NEW MEXICO	17	26	51	6	12	3	6	0	0	0	0	2	4	14	27	1	100	0	0	0	0	0	0	0	0	0	0	0	0
NEW YORK	6	12	15	16	21	9	12	3	4	4	5	0	0	34	44	0	0	0	0	0	0	0	0	0	0	0	0	0	0
NORTH CAROLINA	5	17	21	14	17	9	11	4	5	2	2	0	0	35	43	0	0	3	60	1	20	0	0	0	0	0	1	20	
NORTH DAKOTA	43	2	29	0	0	0	0	3	43	0	0	0	0	2	29	0	0	0	0	0	0	0	0	0	0	0	0	0	0

\* ON DECEMBER 8, 1963 THE CRASH OF A JETLINER KILLING 81 PEOPLE NEAR ELKIN, MARYLAND, WAS ATTRIBUTED TO LIGHTNING BY THE CIVIL AERONAUTICS BOARD INVESTIGATORS.



# LIGHTNING DEATHS BY STATE, RANK, AND LOCATION OF OCCURRENCE

## 1959-2003



**2003**

STATE	RANK	OPEN FIELDS, BALL PARKS AND OPEN SPACES		UNDER TREES		BOATING, FISHING AND WATER RELATED		NEAR TRACTORS HEAVY ROAD EQUIPMENT		GOLF COURSES		AT TELEPHONES		VARIOUS OTHER AND UNKNOWN LOCATIONS		OPEN FIELDS, BALL PARKS AND OPEN SPACES		UNDER TREES		BOATING, FISHING AND WATER RELATED		NEAR TRACTORS HEAVY ROAD EQUIPMENT		GOLF COURSES		AT TELEPHONES		VARIOUS OTHER AND UNKNOWN LOCATIONS		
		NO.	%	NO.	%	NO.	%	NO.	%	NO.	%	NO.	%	NO.	%	NO.	%	NO.	%	NO.	%	NO.	%	NO.	%	NO.	%	NO.	%	
OHIO	9	19	26	10	14	8	11	8	11	6	8	1	1	21	29	1	100	0	0	0	0	0	0	0	0	0	0	0	0	0
OKLAHOMA	13	22	39	4	7	15	27	4	7	0	0	2	4	9	16	2	100	0	0	0	0	0	0	0	0	0	0	0	0	
OREGON	50	1	33	1	33	0	0	0	0	0	0	0	0	1	33	0	0	0	0	0	0	0	0	0	0	0	0	0	0	
PENNSYLVANIA	12	25	42	5	8	1	2	1	2	4	7	0	0	24	40	0	0	0	0	0	0	0	0	0	0	0	0	0	0	
PUERTO RICO	41	3	38	2	25	1	13	0	0	0	0	0	0	2	25	0	0	0	0	0	0	0	0	0	0	0	0	0	0	
RHODE ISLAND	49	0	0	0	0	0	0	0	0	0	0	0	0	3	100	0	0	0	0	0	0	0	0	0	0	0	0	0	0	
SOUTH CAROLINA	21	6	14	14	32	7	16	6	14	2	5	1	2	8	18	0	0	0	0	0	0	0	0	0	0	0	0	0	0	
SOUTH DAKOTA	34	3	20	1	7	4	27	5	33	1	7	0	0	1	7	0	0	0	0	1	100	0	0	0	0	0	0	0	0	
TENNESSEE	4	19	23	22	27	4	5	8	10	5	6	1	1	23	28	0	0	0	0	0	0	0	0	0	0	0	0	0	0	
TEXAS	3	36	35	18	17	15	15	11	11	3	3	0	0	20	19	2	40	2	40	0	0	0	0	0	0	0	0	1	20	
UTAH	27	13	48	8	30	1	4	2	7	0	0	0	0	3	11	0	0	2	67	1	33	0	0	0	0	0	0	0	0	
VERMONT	44	2	40	1	20	0	0	0	0	0	0	0	0	2	40	0	0	0	0	0	0	0	0	0	0	0	0	0	0	
VIRGINIA	29	9	35	5	19	1	4	3	12	1	4	0	0	7	27	1	100	0	0	0	0	0	0	0	0	0	0	0	0	
WASHINGTON	45	2	50	1	25	0	0	1	25	0	0	0	0	0	0	0	0	0	0	0	0	0	0	0	0	0	0	0	0	
WEST VIRGINIA	33	4	24	6	35	1	6	1	6	0	0	0	0	5	29	0	0	0	0	0	0	0	0	0	0	0	0	0	0	
WISCONSIN	24	13	39	3	9	6	18	2	6	2	6	0	0	7	21	0	0	0	0	0	0	0	0	0	0	0	0	0	0	
WYOMING	32	12	60	1	5	2	10	0	0	0	0	0	0	5	25	0	0	0	0	0	0	0	0	0	0	0	2	100		
UNITED STATES	0	574	28	346	17	260	13	151	7	76	4	18	1	615	30	15	34	9	20	7	16	1	2	0	0	0	0	12	27	







# LIGHTNING INJURIES BY STATE, RANK, AND LOCATION OF OCCURRENCE

## 1959-2003



**2003**

STATE	RANK	OPEN FIELDS, BALL PARKS AND OPEN SPACES		UNDER TREES		BOATING, FISHING AND WATER RELATED		NEAR TRACTORS HEAVY ROAD EQUIPMENT		GOLF COURSES		AT TELEPHONES		VARIOUS OTHER AND UNKNOWN LOCATIONS		OPEN FIELDS, BALL PARKS AND OPEN SPACES		UNDER TREES		BOATING, FISHING AND WATER RELATED		NEAR TRACTORS HEAVY ROAD EQUIPMENT		GOLF COURSES		AT TELEPHONES		VARIOUS OTHER AND UNKNOWN LOCATIONS		
		NO.	%	NO.	%	NO.	%	NO.	%	NO.	%	NO.	%	NO.	%	NO.	%	NO.	%	NO.	%	NO.	%	NO.	%	NO.	%	NO.	%	
OHIO	5	82	24	76	22	10	3	5	1	35	10	12	4	120	35	0	0	2	67	0	0	1	33	0	0	0	0	0	0	0
OKLAHOMA	13	69	39	8	4	9	5	5	3	0	0	11	6	76	43	1	33	0	0	0	0	0	0	0	0	0	0	2	67	
OREGON	47	4	29	0	0	0	0	0	0	0	0	1	7	9	64	0	0	0	0	0	0	0	0	0	0	0	2	100		
PENNSYLVANIA	4	143	42	37	11	3	1	6	2	0	0	6	2	147	43	6	67	2	22	0	0	0	0	0	0	0	1	11		
PUERTO RICO	51	2	100	0	0	0	0	0	0	0	0	0	0	0	0	0	0	0	0	0	0	0	0	0	0	0	0	0	0	
RHODE ISLAND	43	4	17	6	26	1	4	0	0	0	0	0	0	12	52	0	0	0	0	0	0	0	0	0	0	0	0	0	0	
SOUTH CAROLINA	18	38	27	18	13	6	4	2	1	4	3	4	3	69	49	2	67	0	0	0	0	0	0	0	0	0	1	33		
SOUTH DAKOTA	40	12	29	2	5	5	12	5	12	1	2	1	2	15	37	1	50	0	0	1	50	0	0	0	0	0	0	0	0	
TENNESSEE	10	78	33	58	25	5	2	8	3	2	1	8	3	74	32	0	0	0	0	0	0	0	0	0	0	0	0	0	0	
TEXAS	9	89	35	37	15	13	5	10	4	4	2	3	1	97	38	2	40	2	40	0	0	0	0	0	0	0	1	20		
UTAH	35	14	21	22	33	2	3	4	6	2	3	2	3	20	30	1	25	3	75	0	0	0	0	0	0	0	0	0	0	
VERMONT	49	4	33	1	8	0	0	0	0	0	0	0	0	7	58	0	0	0	0	0	0	0	0	0	0	0	0	0	0	
VIRGINIA	17	31	20	11	7	8	5	1	1	6	4	7	5	90	58	3	75	0	0	0	0	0	0	0	0	0	1	25		
WASHINGTON	41	23	64	5	14	0	0	0	0	0	0	1	3	7	19	0	0	0	0	0	0	0	0	0	0	0	1	100		
WEST VIRGINIA	27	34	33	7	7	3	3	4	4	2	2	0	0	53	51	0	0	0	0	0	0	0	0	0	0	0	8	100		
WISCONSIN	14	66	38	7	4	6	3	3	2	6	3	4	2	82	47	0	0	0	0	0	0	0	0	0	0	0	12	100		
WYOMING	34	25	37	0	0	15	22	5	7	3	4	0	0	20	29	0	0	0	0	0	0	0	0	0	0	0	6	100		
UNITED STATES	0	2184	29	016	14	414	6	328	4	227	3	213	3	030	41	49	21	17	7	20	8	5	2	3	1	0	0	142	60	



# TORNADO SUMMARY BY STATE AND NATION, 2003

LOCATION	JAN	FEB	MAR	APR	MAY	JUN	JUL	AUG	SEP	OCT	NOV	DEC	ANN
<b>ALABAMA</b>													
NUMBER	0	3	6	6	22	0	2	1	0	0	2	0	42
DAYS	0	2	2	2	3	0	1	1	0	0	1	0	12
DEATHS	0	0	0	0	0	0	0	0	0	0	0	0	0
INJURIES	0	0	6	0	0	0	0	0	0	0	2	0	8
<b>ARIZONA</b>													
NUMBER	0	1	0	0	1	1	0	3	2	1	0	0	9
DAYS	0	1	0	0	1	1	0	2	1	1	0	0	7
DEATHS	0	0	0	0	0	0	0	0	0	0	0	0	0
INJURIES	0	0	0	0	0	0	0	0	0	0	0	0	0
<b>ARKANSAS</b>													
NUMBER	0	0	0	15	46	0	1	0	0	0	0	1	63
DAYS	0	0	0	3	7	0	1	0	0	0	0	1	12
DEATHS	0	0	0	0	0	0	0	0	0	0	0	0	0
INJURIES	0	0	0	1	10	0	0	0	0	0	0	0	11
<b>COLORADO</b>													
NUMBER	0	0	1	3	8	14	1	1	1	0	0	0	29
DAYS	0	0	1	2	3	4	1	1	1	0	0	0	13
DEATHS	0	0	0	0	0	0	0	0	0	0	0	0	0
INJURIES	0	0	0	0	0	0	0	0	0	0	0	0	0
<b>FLORIDA</b>													
NUMBER	0	3	10	8	2	5	3	7	1	4	1	0	44
DAYS	0	1	3	2	2	4	3	5	1	3	1	0	25
DEATHS	0	0	1	0	0	0	0	0	0	0	0	0	1
INJURIES	0	0	17	0	0	0	0	28	0	0	0	0	45
<b>GEORGIA</b>													
NUMBER	0	3	4	1	9	1	7	0	0	0	2	0	27
DAYS	0	2	1	1	2	1	1	0	0	0	1	0	9
DEATHS	0	0	6	0	0	0	0	0	0	0	0	0	6
INJURIES	0	1	200	0	12	0	0	0	0	0	0	0	213
<b>IDAHO</b>													
NUMBER	0	0	0	4	0	0	0	0	0	0	0	0	4
DAYS	0	0	0	2	0	0	0	0	0	0	0	0	2
DEATHS	0	0	0	0	0	0	0	0	0	0	0	0	0
INJURIES	0	0	0	0	0	0	0	0	0	0	0	0	0
<b>ILLINOIS</b>													
NUMBER	0	0	1	15	75	22	3	1	3	0	0	0	120
DAYS	0	0	1	3	8	4	3	1	2	0	0	0	22
DEATHS	0	0	0	0	2	0	0	0	0	0	0	0	2
INJURIES	0	0	0	0	79	2	0	0	1	0	0	0	82
<b>INDIANA</b>													
NUMBER	0	0	0	0	9	2	9	4	1	0	0	0	25
DAYS	0	0	0	0	7	1	5	3	1	0	0	0	17
DEATHS	0	0	0	0	0	0	0	0	0	0	0	0	0
INJURIES	0	0	0	0	0	0	0	0	0	0	0	0	0
<b>IOWA</b>													
NUMBER	0	0	0	3	7	4	13	0	1	0	0	0	28
DAYS	0	0	0	1	1	3	5	0	1	0	0	0	11
DEATHS	0	0	0	0	0	0	0	0	0	0	0	0	0
INJURIES	0	0	0	0	0	0	0	0	0	0	0	0	0
<b>KANSAS</b>													
NUMBER	0	0	1	12	45	22	11	1	0	0	0	0	92
DAYS	0	0	1	5	5	8	3	1	0	0	0	0	23
DEATHS	0	0	0	0	8	0	0	0	0	0	0	0	8
INJURIES	0	0	0	0	84	0	0	0	0	0	0	0	84
<b>KENTUCKY</b>													
NUMBER	0	1	0	2	27	2	0	1	0	0	0	0	33
DAYS	0	1	0	2	6	2	0	1	0	0	0	0	12
DEATHS	0	2	0	0	1	0	0	0	0	0	0	0	3
INJURIES	0	7	0	0	36	0	0	0	0	0	0	0	43
<b>LOUISIANA</b>													
NUMBER	0	1	3	7	4	4	0	0	0	0	3	0	22
DAYS	0	1	1	4	2	2	0	0	0	0	2	0	12
DEATHS	0	0	0	0	0	0	0	0	0	0	0	0	0
INJURIES	0	1	0	3	0	4	0	0	0	0	5	0	13
<b>MARYLAND</b>													
NUMBER	0	0	2	0	2	0	1	0	1	1	3	0	10
DAYS	0	0	1	0	1	0	1	0	1	1	1	0	6
DEATHS	0	0	0	0	0	0	0	0	0	0	0	0	0
INJURIES	0	0	0	0	0	0	0	0	0	0	0	0	0

\* CORRECTED FOR BOUNDARY-CROSSING TORNADOES  
& TORNADO DAYS FOR COUNTRY AS A WHOLE



# TORNADO SUMMARY BY STATE AND NATION, 2003

LOCATION	JAN	FEB	MAR	APR	MAY	JUN	JUL	AUG	SEP	OCT	NOV	DEC	ANN
<b>MICHIGAN</b>													
NUMBER	0	0	0	0	1	5	2	4	0	0	1	0	13
DAYS	0	0	0	0	1	1	2	4	0	0	1	0	9
DEATHS	0	0	0	0	0	0	0	0	0	0	0	0	0
INJURIES	0	0	0	0	0	0	0	2	0	0	0	0	2
<b>MINNESOTA</b>													
NUMBER	0	0	0	0	2	19	25	1	0	0	0	0	47
DAYS	0	0	0	0	2	4	5	1	0	0	0	0	12
DEATHS	0	0	0	0	0	0	0	0	0	0	0	0	0
INJURIES	0	0	0	0	0	5	0	0	0	0	0	0	5
<b>MISSISSIPPI</b>													
NUMBER	0	3	2	21	15	2	0	1	0	0	7	0	51
DAYS	0	1	1	3	4	2	0	1	0	0	2	0	14
DEATHS	0	0	0	0	0	0	0	0	0	0	0	0	0
INJURIES	0	0	0	14	8	0	0	0	0	0	2	0	24
<b>MISSOURI</b>													
NUMBER	0	0	0	6	78	1	0	0	1	0	0	0	86
DAYS	0	0	0	1	6	1	0	0	1	0	0	0	9
DEATHS	0	0	0	0	19	0	0	0	0	0	0	0	19
INJURIES	0	0	0	0	171	0	0	0	0	0	0	0	171
<b>MONTANA</b>													
NUMBER	0	0	0	2	0	0	3	1	0	0	0	0	6
DAYS	0	0	0	2	0	0	2	1	0	0	0	0	5
DEATHS	0	0	0	0	0	0	0	0	0	0	0	0	0
INJURIES	0	0	0	0	0	0	0	0	0	0	0	0	0
<b>NEBRASKA</b>													
NUMBER	0	0	0	8	16	43	13	0	0	0	1	0	81
DAYS	0	0	0	1	6	6	6	0	0	0	1	0	20
DEATHS	0	0	0	0	0	2	0	0	0	0	0	0	2
INJURIES	0	0	0	0	0	7	0	0	0	0	0	0	7
<b>NEVADA</b>													
NUMBER	0	0	0	0	0	0	0	3	0	0	0	0	3
DAYS	0	0	0	0	0	0	0	2	0	0	0	0	2
DEATHS	0	0	0	0	0	0	0	0	0	0	0	0	0
INJURIES	0	0	0	0	0	0	0	0	0	0	0	0	0
<b>NEW JERSEY</b>													
NUMBER	0	0	0	0	0	0	1	0	3	3	0	0	7
DAYS	0	0	0	0	0	0	1	0	1	1	0	0	3
DEATHS	0	0	0	0	0	0	0	0	0	1	0	0	1
INJURIES	0	0	0	0	0	0	0	0	0	0	0	0	0
<b>NEW MEXICO</b>													
NUMBER	0	0	0	0	0	7	0	0	0	0	0	0	7
DAYS	0	0	0	0	0	2	0	0	0	0	0	0	2
DEATHS	0	0	0	0	0	0	0	0	0	0	0	0	0
INJURIES	0	0	0	0	0	0	0	0	0	0	0	0	0
<b>NEW YORK</b>													
NUMBER	0	0	0	0	2	0	12	2	1	1	0	0	18
DAYS	0	0	0	0	2	0	1	2	1	1	0	0	7
DEATHS	0	0	0	0	0	0	0	0	0	0	0	0	0
INJURIES	0	0	0	0	0	0	8	0	0	0	0	0	8
<b>NORTH CAROLINA</b>													
NUMBER	0	1	0	0	15	1	14	3	0	1	1	0	36
DAYS	0	1	0	0	5	1	3	2	0	1	1	0	14
DEATHS	0	0	0	0	0	0	0	0	0	0	0	0	0
INJURIES	0	0	0	0	0	2	0	0	0	0	0	0	2
<b>NORTH DAKOTA</b>													
NUMBER	0	0	1	0	1	20	9	0	0	0	0	0	31
DAYS	0	0	1	0	1	6	6	0	0	0	0	0	14
DEATHS	0	0	0	0	0	0	0	0	0	0	0	0	0
INJURIES	0	0	0	0	0	0	1	0	0	0	0	0	1
<b>OHIO</b>													
NUMBER	0	0	0	1	0	0	3	4	1	1	3	0	13
DAYS	0	0	0	1	0	0	3	3	1	1	1	0	10
DEATHS	0	0	0	0	0	0	0	0	0	0	0	0	0
INJURIES	0	0	0	0	0	0	0	0	0	0	4	0	4
<b>OKLAHOMA</b>													
NUMBER	0	0	4	15	61	0	0	0	0	0	0	0	80
DAYS	0	0	1	3	8	0	0	0	0	0	0	0	12
DEATHS	0	0	0	0	0	0	0	0	0	0	0	0	0
INJURIES	0	0	0	4	147	0	0	0	0	0	0	0	151

\* CORRECTED FOR BOUNDARY-CROSSING TORNADOES  
& TORNADO DAYS FOR COUNTRY AS A WHOLE



# TORNADO SUMMARY BY STATE AND NATION, 2003

LOCATION	JAN	FEB	MAR	APR	MAY	JUN	JUL	AUG	SEP	OCT	NOV	DEC	ANN
<b>OREGON</b>													
NUMBER	0	0	0	0	0	1	0	0	0	1	0	0	2
DAYS	0	0	0	0	0	1	0	0	0	1	0	0	2
DEATHS	0	0	0	0	0	0	0	0	0	0	0	0	0
INJURIES	0	0	0	0	0	0	0	0	0	0	0	0	0
<b>PENNSYLVANIA</b>													
NUMBER	0	0	0	0	1	1	6	0	1	0	0	0	9
DAYS	0	0	0	0	1	1	2	0	1	0	0	0	5
DEATHS	0	0	0	0	0	0	0	0	0	0	0	0	0
INJURIES	0	0	0	0	0	0	0	0	0	0	0	0	0
<b>SOUTH CAROLINA</b>													
NUMBER	0	1	0	2	8	0	6	0	0	0	1	0	18
DAYS	0	1	0	2	2	0	3	0	0	0	1	0	9
DEATHS	0	0	0	0	0	0	0	0	0	0	0	0	0
INJURIES	0	0	0	0	4	0	0	0	0	0	0	0	4
<b>SOUTH DAKOTA</b>													
NUMBER	0	0	0	0	2	76	3	0	0	0	0	0	81
DAYS	0	0	0	0	2	4	3	0	0	0	0	0	9
DEATHS	0	0	0	0	0	0	0	0	0	0	0	0	0
INJURIES	0	0	0	0	0	7	0	0	0	0	0	0	7
<b>TENNESSEE</b>													
NUMBER	0	0	4	0	41	0	0	0	0	0	0	0	45
DAYS	0	0	1	0	6	0	0	0	0	0	0	0	7
DEATHS	0	0	1	0	11	0	0	0	0	0	0	0	12
INJURIES	0	0	2	0	103	0	0	0	0	0	0	0	105
<b>TEXAS</b>													
NUMBER	0	0	4	26	45	30	6	1	4	12	27	0	155
DAYS	0	0	3	7	7	10	5	1	4	3	2	0	42
DEATHS	0	0	0	0	0	0	0	0	0	0	0	0	0
INJURIES	0	0	0	17	5	0	0	0	0	1	71	0	94
<b>UTAH</b>													
NUMBER	0	0	0	0	0	1	0	0	0	0	0	0	1
DAYS	0	0	0	0	0	1	0	0	0	0	0	0	1
DEATHS	0	0	0	0	0	0	0	0	0	0	0	0	0
INJURIES	0	0	0	0	0	0	0	0	0	0	0	0	0
<b>VERMONT</b>													
NUMBER	0	0	0	0	0	0	2	0	0	0	0	0	2
DAYS	0	0	0	0	0	0	1	0	0	0	0	0	1
DEATHS	0	0	0	0	0	0	0	0	0	0	0	0	0
INJURIES	0	0	0	0	0	0	0	0	0	0	0	0	0
<b>VIRGINIA</b>													
NUMBER	0	1	0	0	8	0	6	4	10	0	1	0	30
DAYS	0	1	0	0	4	0	2	4	3	0	1	0	15
DEATHS	0	0	0	0	0	0	0	0	0	0	0	0	0
INJURIES	0	0	0	0	0	0	0	0	2	0	0	0	2
<b>WASHINGTON</b>													
NUMBER	0	0	0	0	1	0	0	0	0	1	0	0	2
DAYS	0	0	0	0	1	0	0	0	0	1	0	0	2
DEATHS	0	0	0	0	0	0	0	0	0	0	0	0	0
INJURIES	0	0	0	0	0	0	0	0	0	0	0	0	0
<b>WEST VIRGINIA</b>													
NUMBER	0	0	0	0	0	1	2	0	0	0	0	0	3
DAYS	0	0	0	0	0	1	2	0	0	0	0	0	3
DEATHS	0	0	0	0	0	0	0	0	0	0	0	0	0
INJURIES	0	0	0	0	0	0	0	0	0	0	0	0	0
<b>WISCONSIN</b>													
NUMBER	0	0	0	0	4	5	4	1	0	0	0	0	14
DAYS	0	0	0	0	2	1	1	1	0	0	0	0	5
DEATHS	0	0	0	0	0	0	0	0	0	0	0	0	0
INJURIES	0	0	0	0	1	0	0	0	0	0	0	0	1
<b>WYOMING</b>													
NUMBER	0	0	0	0	0	2	0	0	1	0	0	0	3
DAYS	0	0	0	0	0	1	0	0	1	0	0	0	2
DEATHS	0	0	0	0	0	0	0	0	0	0	0	0	0
INJURIES	0	0	0	0	0	0	0	0	0	0	0	0	0
<b>UNITED STATES</b>													
NUMBER	0	18	43	157*	558*	292	168*	44	32	26	53*	1	1372*
DAYS	0	5	11	15	24	28	24	21	14	12	8	1	163
DEATHS	0	2	8	0	41	2	0	0	0	1	0	0	54
INJURIES	0	9	225	39	660	27	9	30	3	1	84	0	1087

\* CORRECTED FOR BOUNDARY-CROSSING TORNADOES  
& TORNADO DAYS FOR COUNTRY AS A WHOLE





# NATIONS SUMMARY OF TORNADOS, TORNADO DAYS AND DEATHS BY MONTH AND ANNUAL, 1953-2003



YEAR	JANUARY			FEBRUARY			MARCH			APRIL			MAY			JUNE			JULY			AUGUST			SEPTEMBER			OCTOBER			NOVEMBER			DECEMBER			ANNUAL		
	NUMBER	DAYS	DEATHS	NUMBER	DAYS	DEATHS	NUMBER	DAYS	DEATHS	NUMBER	DAYS	DEATHS	NUMBER	DAYS	DEATHS	NUMBER	DAYS	DEATHS	NUMBER	DAYS	DEATHS	NUMBER	DAYS	DEATHS	NUMBER	DAYS	DEATHS	NUMBER	DAYS	DEATHS	NUMBER	DAYS	DEATHS	NUMBER	DAYS	DEATHS			
1993	17	8	0	34	7	3	49	11	5	85	15	10	179	26	2	316	27	1	242	31	0	112	26	6	65	17	2	55	9	4	19	6	0	6	3	0	1176	186	33
1994	13	5	0	9	7	0	61	12	40	206	23	12	161	27	0	236	29	3	155	27	3	120	24	4	30	17	0	51	15	0	42	10	7	4	3	0	1082	199	69
1995	36	9	3	7	4	6	49	11	0	130	17	1	394	28	16	219	25	0	163	28	0	53	22	0	19	11	0	74	11	1	79	5	2	19	7	1	1235	178	30
1996	35	10	1	14	5	1	71	10	6	178	16	12	236	29	1	128	27	0	204	28	1	72	24	0	101	20	0	68	10	0	55	8	3	15	7	1	1173	194	26
1997	50	10	2	23	6	1	102	13	28	114	16	1	225	27	29	194	29	0	189	30	4	84	26	1	32	12	1	101	12	0	25	8	0	12	7	0	1148	196	67
1998	47	12	0	73	18	42	74	12	16	190	19	55	314	29	10	389	29	3	82	22	0	62	20	0	104	19	2	86	13	2	27	6	0	6	3	0	1449	202	130
1999	214	12	16	22	7	0	56	12	1	178	19	15	316	29	53	289	27	4	99	28	0	81	22	1	54	16	0	19	7	0	8	3	0	15	4	2	1340	186	92
2000	16	4	0	58	12	19	103	20	2	136	19	2	241	29	3	136	27	0	148	31	1	53	23	0	47	17	2	64	15	0	50	11	0	26	4	12	1076	212	41
2001	5	2	0	30	3	8	33	8	3	139	15	5	240	26	1	247	28	4	122	25	0	69	19	0	85	19	2	119	9	2	111	11	15	22	9	0	1213	174	40
2002	3	3	0	2	2	0	47	8	0	118	14	7	206	25	4	97	25	0	68	24	0	86	21	0	62	19	0	56	14	3	99	6	37	99	9	4	934	170	55
2003	0	0	0	18	5	2	43	11	8	157	15	0	558	24	41	292	28	2	168	24	0	44	21	0	32	14	0	26	12	1	53	8	0	1	1	0	1372	163	54
POR	982	254	121	1121	303	286	2809	615	422	5850	881	1301	50	81	301	9045	1358	514	5129	1303	56	3145	1080	112	2202	747	73	1665	440	89	1728	343	201	962	256	137	44449	8874	4290
MEAN	19	5	2	22	6	6	55	12	8	115	17	26	194	25	19	177	27	10	101	26	1	62	21	2	43	15	1	33	9	2	34	7	4	19	5	3	872	174	84



# TORNADOES, TORNADO DAYS AND DEATHS BY STATE AND NATION 1953-2003



STATE	TORNADOES							DAYS		DEATHS		
	TOTAL	AVERAGE	GREATEST	YEAR	LEAST	YEAR	PER # 10,000 Sq.Mi.	TOTAL	AVERAGE	TOTAL	AVERAGE	PER # 10,000 Sq.Mi.
ALABAMA	1252	25	55	2001	5	1956	4.84	603	12	354	7	69
ALASKA	1	0	1	1959	0	1989+	.00	1	0	0	0	0
ARIZONA	201	4	17	1972	0	1965+	.36	157	3	3	0	0
ARKANSAS	1262	25	106	1999	2	1987+	4.71	514	10	229	4	43
CALIFORNIA	326	6	25	1998	0	1968+	.38	233	5	0	0	0
COLORADO	1630	32	98	1996+	1	1959	3.07	794	16	2	0	0
CONNECTICUT	76	1	8	1973	0	1988+	2.00	64	1	4	0	8
DELAWARE	55	1	6	1992	0	1987+	4.86	44	1	2	0	10
DISTRICT OF COLUMBIA	2	0	1	1995+	0		0	.0	2	0	0	0
FLORIDA	2729	54	115	1997	10	1956	9.22	1676	33	134	3	23
GEORGIA	1091	21	52	1994	2	1987	3.57	578	11	154	3	26
HAWAII	28	1	4	1971	0	1987+	1.55	24	0	0	0	0
IDAHO	167	3	13	2000	0	1977+	.36	132	3	0	0	0
ILLINOIS	1745	34	120	2003	4	1953	6.03	694	14	188	4	33
INDIANA	1088	21	49	1990	4	1984	5.79	505	10	223	4	61
IOWA	1809	35	105	2001	7	1956	6.22	753	15	65	1	12
KANSAS	2737	54	116	1991	14	1976	6.56	1074	21	205	4	25
KENTUCKY	585	11	39	1997	0	1953	2.72	303	6	114	2	28
LOUISIANA	1373	27	79	1992	3	1955	5.56	743	15	116	2	24
MAINE	96	2	11	1971	0	1987+	.60	86	2	1	0	0
MARYLAND	267	5	24	1995	0	1988+	4.73	160	3	7	0	7
MASSACHUSETTS	143	3	12	1958	0	1988+	3.63	102	2	102	2	124
MICHIGAN	853	17	39	1974	2	1959	2.92	479	9	238	5	41
MINNESOTA	1250	25	73	2001	5	1988+	2.97	589	12	86	2	10
MISSISSIPPI	1363	27	62	1988	1	1979	5.66	623	12	384	8	80
MISSOURI	1494	29	86	2003	6	1977+	4.16	628	12	161	3	23
MONTANA	343	7	30	1991	0	1974+	.48	232	5	1	0	0
NEBRASKA	2223	44	102	1999	10	1966	5.70	934	18	53	1	7
NEVADA	69	1	8	1987+	0	1985+	.09	63	1	0	0	0
NEW HAMPSHIRE	77	2	9	1963	0	1987+	2.15	68	1	0	0	0
NEW JERSEY	134	3	17	1989	0	1984+	3.83	100	2	1	0	1
NEW MEXICO	473	9	31	1991	0	1953	.74	338	7	3	0	0
NEW YORK	339	7	25	1992	0	1953	1.41	222	4	21	0	4
NORTH CAROLINA	902	18	66	1998	2	1970	3.41	474	9	85	2	16
NORTH DAKOTA	1088	21	58	1999	2	1961	2.97	544	11	22	0	3
OHIO	795	16	61	1992	0	1988	3.88	408	8	182	4	44
OKLAHOMA	2876	56	144	1999	17	1988	8.01	1062	21	256	5	37
OREGON	87	2	14	1997	0	1988+	.21	76	1	0	0	0
PENNSYLVANIA	617	12	60	1998	0	1959	2.65	359	7	82	2	18
PUERTO RICO	14	0	2	1979+	0	1989+	.00	13	0	0	0	0
RHODE ISLAND	9	0	3	1986	0	1988+	.00	8	0	0	0	0
SOUTH CAROLINA	661	13	54	1995	1	1986+	4.19	381	7	50	1	16
SOUTH DAKOTA	1475	29	85	1993	1	1958	3.76	622	12	15	0	2
TENNESSEE	758	15	45	2003	1	1987+	3.55	355	7	149	3	35
TEXAS	7038	138	232	1967+	32	1953	5.16	2528	50	502	10	19
UTAH	107	2	7	1998	0	1989+	.24	90	2	1	0	0
VERMONT	36	1	5	1962	0	1985+	1.04	32	1	0	0	0
VIRGINIA	425	8	30	2003	1	1982+	1.96	257	5	25	0	6
VIRGIN ISLANDS	2	0	1	1979+	0	1989+	.00	2	0	0	0	0
WASHINGTON	80	2	14	1997	0	1988+	.29	68	1	6	0	1
WEST VIRGINIA	114	2	16	1998	0	1988+	.83	89	2	2	0	1
WISCONSIN	999	20	43	1980	3	1953	3.63	504	10	85	2	15
WYOMING	545	11	42	1977	0	1970	1.12	359	7	2	0	0
PACIFIC ISLANDS	2	0	1	1981+	0	1989+	.00	2	0	0	0	0
UNITED STATES	45619*	894	1449	1998	421	1953	2.48	9070&	178	4315	85	12

+ ALSO IN EARLIER YEAR(S).

\* CORRECTED FOR BOUNDARY-CROSSING TORNADOES.

& TORNADOES DAYS FOR COUNTRY AS A WHOLE.

# MEAN ANNUAL TORNADOES PER  
10,000 SQUARE MILES.

' NUMBER OF DEATHS PER  
10,000 SQUARE MILES.



# NATIONAL TORNADOES, TORNADO DAYS, DEATHS AND RESULTING LOSSES BY YEARS, 1916 - 2003



YEAR	NUMBER TORNADOES	TORNADO DAYS	TOTAL DEATHS	MOST DEATHS IN SINGLE TORNADO	TOTAL PROPERTY LOSSES \$	PROPERTY LOSS FREQUENCY *		
						CATEGORY 5	CATEGORY 6	CATEGORY 7 AND OVER
1916	90	36	150	30	6	7	1	0
1917	121	38	551	101	7	21	9	0
1918	81	45	136	36	7	20	5	0
1919	64	35	206	59	7	10	2	0
1920	87	50	499	87	7	14	10	0
1921	105	55	202	61	7	22	3	0
1922	108	64	135	16	7	27	5	0
1923	102	59	110	23	6	21	1	0
1924	130	57	376	85	7	26	11	1
1925	119	65	794	689	7	34	2	1
1926	111	57	144	23	6	28	0	0
1927	163	62	540	92	7	42	9	1
1928	203	79	95	14	7	40	7	0
1929	197	74	274	40	7	48	4	0
1930	192	72	179	41	7	38	6	0
1931	94	57	36	6	6	14	1	0
1932	151	67	394	37	7	23	1	1
1933	258	96	362	34	7	46	9	0
1934	147	77	47	6	6	10	3	0
1935	180	77	71	11	6	29	0	0
1936	151	71	552	216	7	17	5	1
1937	147	75	29	5	6	24	0	0
1938	213	76	183	32	7	29	6	0
1939	152	75	91	27	7	21	3	0
1940	124	62	65	18	7	13	2	0
1941	118	57	53	25	6	24	1	0
1942	167	66	384	65	7	42	10	0
1943	152	61	58	5	7	28	8	0
1944	169	68	275	100	7	50	9	0
1945	121	66	210	69	7	21	10	1
1946	106	65	78	15	7	29	7	0
1947	165	78	313	169	7	46	7	1
1948	183	68	139	33	7	62	11	2
1949	249	80	211	58	7	54	13	0
1950	200	88	70	18	7	47	9	0
1951	262	113	34	6	7	35	11	2
1952	240	98	229	57	7	53	19	0
1953	421	136	515	116	8	63	18	7
1954	550	160	36	6	7	63	8	1
1955	593	152	126	80	7	74	13	1
1956	504	155	83	25	7	83	24	1
1957	856	154	192	44	8	129	26	3
1958	564	166	66	19	7	70	8	1
1959	604	156	58	21	7	70	4	1
1960	616	172	46	16	7	65	11	1
1961	697	169	51	16	7	103	21	1
1962	657	152	28	17	7	51	10	0
1963	464	141	31	5	7	77	15	1
1964	704	156	73	22	7	113	17	5
1965	906	181	299	44	8	126	30	11
1966	585	150	98	58	8	79	13	4
1967	926	173	114	33	8	125	33	8
1968	660	171	131	34	8	82	26	6
1969	608	155	66	32	8	98	16	3
1970	653	171	72	26	8	97	24	6
1971	888	192	156	58	8	71	30	5
1972	741	194	27	6	8	100	28	1
1973	1102	206	87	7	9	219	67	9
1974	947	184	361	34	9	166	82	25
1975	920	204	60	9	9	189	31	11

NOTE:-THE ABOVE ESTIMATED LOSSES ARE BASED ON VALUES AT TIME OF OCCURRENCE.  
MEAN WAS DERIVED FROM DATA FOR PERIOD 1953-1992.

\$ STORM DAMAGES IN CATEGORIES:

- |                                |                                  |
|--------------------------------|----------------------------------|
| 5. \$50,000 TO \$500,000       | 8. \$50 MILLION TO \$500 MILLION |
| 6. \$500,000 TO \$5 MILLION    | 9. \$500 MILLION AND OVER        |
| 7. \$5 MILLION TO \$50 MILLION |                                  |

\* NUMBER OF TIMES PROPERTY LOSSES REPORTED IN STORM DATA IN CATEGORIESS 5, 6, 7 AND OVER.





# NATIONAL TORNADOES, TORNADO DAYS, DEATHS AND RESULTING LOSSES BY YEARS, 1916 - 2003



YEAR	NUMBER TORNADOES	TORNADO DAYS	TOTAL DEATHS	MOST DEATHS IN SINGLE TORNADO	TOTAL PROPERTY LOSSES \$	PROPERTY LOSS FREQUENCY *		
						CATEGORY 5	CATEGORY 6	CATEGORY 7 AND OVER
1976	835	169	44	5	8	145	41	5
1977	852	189	43	22	8	173	40	6
1978	788	173	53	16	9	153	53	6
1979	852	186	84	42	9	169	62	11
1980	866	176	28	5	9	201	79	13
1981	783	175	24	5	9	144	43	12
1982	1046	182	64	10	9	254	79	13
1983	931	190	34	3	9	211	85	10
1984	907	166	122	16	9	193	90	35
1985	684	168	94	18	9	114	55	14
1986	764	168	15	3	9	157	66	9
1987	656	151	59	30	8	112	32	6
1988	702	156	32	5	9	148	48	17
1989	856	160	50	21	9	133	60	18
1990	1133	181	53	29	8	215	91	18
1991	1132	179	39	17	8	194	49	15
1992	1298	195	39	12	8	212	83	25
1993	1176	186	33	7	8	186	59	13
1994	1082	199	69	22	8	194	68	15
1995	1235	178	30	6	8	203	52	11
1996	1173	194	26	7	9	225	92	20
1997	1148	196	67	27	8	201	63	10
1998	1449	202	130	32	9	317	122	39
1999	1340	186	92	36	8	227	104	21
2000	1076	212	41	11	8	182	53	15
2001	1213	174	40	6	8	234	82	24
2002	934	170	55	7	8	132	85	23
2003	1372	163	54	11	8	212	86	38
MEAN	872	174	84	-	-	148	49	11

NOTE:-THE ABOVE ESTIMATED LOSSES ARE BASED ON VALUES AT TIME OF OCCURRENCE.  
MEAN WAS DERIVED FROM DATA FOR PERIOD 1953-1992.

\$ STORM DAMAGES IN CATEGORIES:

- |                                |                                  |
|--------------------------------|----------------------------------|
| 5. \$50,000 TO \$500,000       | 8. \$50 MILLION TO \$500 MILLION |
| 6. \$500,000 TO \$5 MILLION    | 9. \$500 MILLION AND OVER        |
| 7. \$5 MILLION TO \$50 MILLION |                                  |

\* NUMBER OF TIMES PROPERTY LOSSES REPORTED IN STORM DATA IN CATEGORIESS 5, 6, 7 AND OVER.

To change your address, please return a copy of the mailing label along with your new address to:

NCDC Subscription Services Center  
310 State Route 956  
Building 300  
Rocket Center, WV 26726

Toll free number: (866) 742-3322  
TDD: (828) 271-4010  
Fax number: (304) 726-4409

Inquiries/Comments Call: (866) 742-3322 (Toll free)  
(828) 271-4010 (TDD)  
(304) 726-4409 (Fax)

Subscription Services Center  
310 State Route 956  
Building 300  
Rocket Center, WV 26726

<p>PRSR STD POSTAGE &amp; FEES PAID United States Department of Commerce NOAA Permit No. G-19</p>
---

OFFICIAL BUSINESS  
PENALTY FOR PRIVATE USE \$300  
CHANGE SERVICE REQUESTED