



TRENTINO
2013
WINTER
UNIVERSIADE

ITALY



SPORT MANUAL

NORDIC COMBINED



A BIG THANK YOU



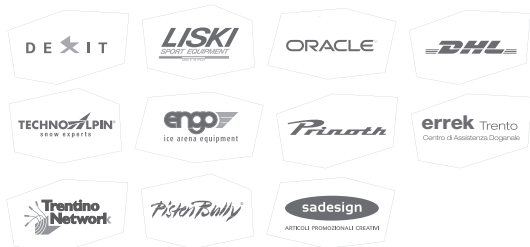
PREMIUM PARTNER



OFFICIAL PARTNER



TECHNICAL SUPPLIER



OFFICIAL BROADCASTER





FORWARDS & INTRODUCTION

Welcome!

Dear Athletes and Officials of the 26th Winter Universiade,
The Winter Universiade Organising Committee Trentino 2013 is honoured and has great pride in welcoming elite University athletes to the Trentino 2013 Winter Universiade.

We are confident that the efforts made by the Organising Committee in all fields, although in a quite short preparation time frame, will provide you the best infrastructures, the most adequate competition venues and conditions to enhance your performances and enable you to enjoy the most comfortable and pleasant stay in our beautiful and historically, culturally rich region surrounded by the wonderful UNESCO heritage Dolomites mountains.

We are well aware that your performances will represent an important stage in your life and motivate you to consider any kind of result an important milestone also in consideration of your future professional activities.

We have prepared this summary booklet with the intention to provide you specifically with all necessary and more detailed and useful information, in order to facilitate the approach to the competition venue, to remind the most important dates and deadlines and to give you practical assistance on the field of play.

We look forward to your participation and hope you will find the our manual helpful.

Best wishes,



President
Sergio Anesi



Secretary General
Filippo Bazzanella



Sport & Venues Managing Director
Ubaldo Prucker

SPORT TECHNICAL MANUAL

NORDIC COMBINED

Predazzo (Ski Jumping) - Lago di Tesero (Cross Country Skiing)

International University Sport Federation



The FISU (International University Sport Federation) is responsible for the organisation and governance of worldwide competitions for student-athletes between the ages of 17 and 28. It was founded in 1949 as the world governing body of national university sports organisations and currently has 167 member associations from 5 continental regions.

The Winter Universiade is an international sporting and cultural festival which is staged every two years in a different city.

For the 2013 the FISU Executive Committee has appointed Trentino.

Each organising committee has to fulfill FISU regulations. Due to the particular situation of Trentino 2013 Winter Universiade, the Regulations differ from the ones of the previous editions.

The 26th Winter Universiade was attributed to Trentino in 2012 after the cancellation of the Winter Universiade in Maribor (Slovenia). For this reason, FISU and the Organising Committee have agreed on particular conditions.

Although it is organised under special circumstances, this exceptional Winter Universiade promised FISU and all university students to be held without any interruption in Trentino, an outstanding Alpine Region with a high standard of education, life, sport, culture and modern infrastructure.





Table of contents

1. INTERNATIONAL AND NATIONAL SPORT FEDERATIONS

2. FISU SPORT TECHNICAL COMMITTEE

3. NORDIC COMBINED VENUE

3.1 Introduction to the Venue

3.2 Transport Service

3.3 Distances from Venues

4. GENERAL RULES

4.1 Nordic Combined - FISU Technical Regulations

4.2 Insurance

4.3 Protests

4.4 Medical Care

5. COMPETITION MANAGEMENT

5.1 Nordic Combined Structural Chart

5.2 Competition Format

5.3 Final Entries - Deadlines

5.4 Clothing & Equipment

6. DRAWS AND TECHNICAL MEETINGS

7. COMPETITION SCHEDULE AND VENUES

7.1 Medals

7.2 Training Dates

7.3 Competition Dates

7.4 Day by Day Program

8. CEREMONIES

9. GENERAL INFORMATION

9.1 Results Distribution

9.3 Opening & Closing Ceremony

10. DOPING CONTROL (RULES AND PROCEDURES)

11. MAPS, VENUE PLANS AND TECHNICAL DATA

12. CONTACTS





1. International and National Sport Federations

International University Sports Federation (FISU)

President

Claude-Louis Gallien (FRA)

Secretary General/CEO

Eric Saintrond (BEL)

Maison du Sport International

Av. de Rhodanie 54

CH - 1007 Lausanne, Switzerland

Ph. +41 (0) 216130810

Fax +41 (0) 216015612

fisufisu.net

www.fisu.net

International Ski Federation (FIS)

President

Gian Franco Kasper (SUI)

Secretary General

Sarah Lewis (GBR)

Marc Hodler House

Blochstrasse 2

CH-3653 Oberhofen / Thunersee - Switzerland

Ph. +41 (33) 244 6161

Fax +41 (33) 244 6171

www.fis-ski.com

mail@fisski.ch

Centro Universitario Sportivo Italiano (CUSI)

President

Leonardo Coiana (ITA)

Secretary General/CEO

Antonio Dima (ITA)

Sede Nazionale

Via Angelo Brofferio, 7

00195 Roma

Ph. 06 3722206

Fax 06 3724479

cusi@cusi.it

www.cusi.it

Federazione Italiana Sport Invernali (FISI)

President

Flavio Roda (ITA)

Secretary General

Enrico Negretti (ITA)

Via G.B. Piranesi, 46 - 20137 Milano

www.fisi.org





2. FISU Sport Technical Committee

INTERNATIONAL TECHNICAL COMMITTEE FOR WINTER UNIVERSIADE (CTI-UH)

Chair

Roger Roth (SUI)

Vice-Chair

Robert Philip (CAN)

Members:

- › Matjaz KRANJC (SLO) - Alpine Skiing
- › Ondrej RYBAR (CZE) - Biathlon
- › Zofia KIELPINSKA (POL) - Cross Country Skiing
- › Jeanette JOHNSTON (GBR) - Curling
- › Marie LUNDMARK (FIN) - Figure Skating
- › Luc KOHLY (FRA) - Freestyle Skiing
- › Lars G. KARLSSON (SWE) - Ice Hockey
- › Frederick MEREDITH (GBR) - Ice Hockey
- › Karl LUSTENBERGER (SUI) - Nordic Combined
- › Nam Hwan PARK (KOR) - Short Track Speed Skating
- › Ola SUNDEKVIST (SWE) - Snowboarding
- › Louw HEKKEMA (NED) - Speed Skating
- › Paul GANZENHUBER (AUT) - Ski Jumping

FISU SPORT TECHNICAL COMMITTEE

Winter Universiade 2013

The CTI (International Technical Committee) - UH (Winter Universiade) is responsible for:

1. cooperating with the CRS in drawing up the technical regulations of the Winter Universiade;
2. advising the EC concerning any general problem of technical matters;
3. controlling the technical conduct of the Winter Universiade.

CTI Chair Winter Universiade

Roger Roth (SUI)

Director Winter Universiade

Milan Augustin (SVK)

Executive Assistant Winter Universiade

Jiho Kim (KOR)

ORGANISING COMMITTEE STRUCTURAL CHART (OC)

[Refer to documents published at the end, page A1 >](#)

SPORT & VENUES ORGANISATIONAL STRUCTURE

[Refer to documents published at the end, page A2 >](#)





3. Nordic Combined Venue

3.1 INTRODUCTION TO THE VENUE

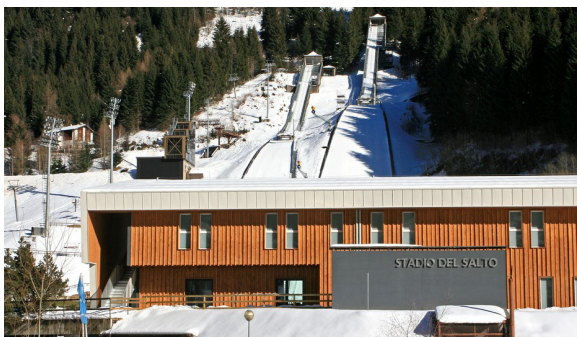
COMPETITION VENUE 1 - SKI JUMPING

Predazzo

- › Distance from Hotel Accommodation: in an area range from 0 to 10 km;
- › Distance from Trento: 75 km;
- › Distance from Lago di Tesero (Cross Country stadium): 8 km

Location

The venue is located in Predazzo (altitude 1.000 metres) about 75 kilometres from Trento, on the left hand side of the river Avisio. It can be reached by the SS 48 road.



Description of the Facility

The facility includes two competition jumping hills (HS 134 and HS 106), plus three training jumping hills (HS10, HS21, HS35). The complex also includes areas dedicated to athletes, FISU Family, medical secure, VIP, press & media, sponsors and spectators.

During the Universiade, a permanent building will accommodate several functions with all the necessary equipment: offices and meeting rooms, administrative and safety personnel offices, refreshments, press offices, and photo-labs.

Venue Technical Information

Jumping Hills	Start altitude	Finish altitude
HS 106	1.100 m	1.000 m
HS 134	1.150 m	1.000 m

Spectator Information

- › Facility capacity: 2.700

Training Venue

Same as competition.

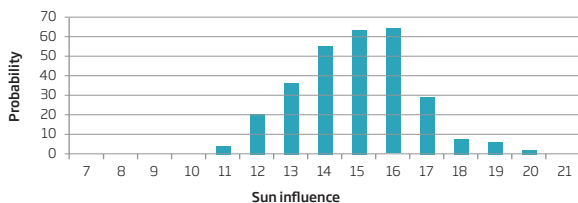
Weather Data

Average maximum temperature in December	4 °C
Average minimum temperature in December	- 9 °C
Average snow depth in December	30 cm

At this time of year there is a 50% chance of the average temperature at these stations being less than 0°C.

Snow Depth is always more than 30 centimetres and, on average, 2 days of snowfall can be expected.

Wind Speeds In Predazzo there is a particular wind condition during the day and there have been made many studies and monitoring, in order to find the best time to organise the races; the results can be seen on the chart below: on the horizontal line the day hours; on the vertical line the probability (%) of wind more than 3 m /s.





All information in regard to weather conditions, weather forecast, snow conditions and climate can be checked and controlled directly on Meteotrentino web site www.meteotrentino.it;

COMPETITION VENUE 2 - CROSS-COUNTRY SKIING

Lago di Tesero

- › Distance from Hotel Accommodation: in an area range from 0 to 10 km;
- › Distance from Trento: 69 km;
- › Distance from Predazzo (Ski Jumping Stadium): 8 km

Location

The venue is located in Lago di Tesero, in the same stadium for Cross Country skiing and 69 kilometres from Trento. The altitude of the competition area ranges between 980 (lowest) and 1.000 (highest) metres from sea level. The location can be reached from Trento by car: high way – exit in Ora – road to Predazzo and after 25 km take right to Lago di Tesero.

Description of the Facility

The course will consist of loops of varying lengths and degrees of difficulty. Service facilities will be provided in the “Cross-Country Centre”.

Venue Technical Information

	Length	Total Climb	Highest Point	Lowest Point	Height Difference	Maximum Climb
Loop 1	2.5 km	96	947 m	903 m	44 m	37 m
Loop 2	5 km	190 m	967 m	900 m	67 m	52 m

Spectator Information

- › Facility Capacity: 300

Training Sites

Same as competition.

3.2 TRANSPORT SERVICE

Trentino 2013 WUOC guarantees transportation service for all accredited persons of the 26th Winter Universiade.

The service can change day by day based on the competition schedule or force major. For information regarding the athletes and officials transportation services, schedules and timetables, please refer to the Transportation Manual.

The transport service is provided by Trentino Trasporti.

Distances between Trento centre and Cluster & Venues are shown in the following table.

DISTANCES

[Refer to documents published at the end, page A3 >](#)

TRANSPORT (Trento - Predazzo)

[Refer to documents published at the end, page A4 >](#)

TRANSPORT (Trento - Lago di Tesero)

[Refer to documents published at the end, page A5 >](#)

DISTANCE (Trento Train Station - San Bartolameo MOC)

[Refer to documents published at the end, page A6 >](#)

TRANSPORT

[Refer to documents published at the end, page A7 >](#)





3.3 DISTANCES FROM VENUES

a) Predazzo

[Refer to documents published at the end, page A8 >](#)

b) Lago di Tesero

[Refer to documents published at the end, page A9 >](#)

CLUSTER 4 MAP - PREDAZZO

[Refer to documents published at the end, page A10 >](#)



DISTANCE FROM TRENTO TO MAIN AIRPORTS



DISTANCE FROM TRENTO	
Verona	76 km
Bergamo	138 km
Venezia	221 km
Milano	235 km





4. General Rules

4.1 NORDIC COMBINED - FISU TECHNICAL REGULATIONS

Referring to Regulations
for the 26th Winter Universiade 2013 Trentino

NORDIC COMBINED

Individual Gundersen Competition:

- › 1 (one) round in Ski Jumping on normal hill HS 106 followed by a 10km Cross-Country race

Team Gundersen Competition:

- › three (3) participants per team
- › 1 (one) round in Ski Jumping on normal hill HS 106 followed by a 3 x 5 km Team Relay Cross-Country competition

Individual Mass-Start Competition:

- › A 10 km Cross-Country race followed by 2 (two) rounds in Ski Jumping competition on normal hill HS 106: the first (1st) round in the Ski Jumping competition is in reverse order of the Cross-Country results.

Nordic Combined:

Individual Events:

Eight (8) competitors, of whom only six (6) may take part.

Team Event:

Three (3) competitors per team

At the first General Technical Meeting, the Head of Delegation or his/her representative shall confirm and sign the official list of competitors accredited by the CIC.



4.2 INSURANCE

Referring to Regulations
for the 26th Winter Universiade 2013 Trentino

Participating countries must have the appropriate insurance to cover travel and participation, as they are the responsibility neither of the Organising Committee nor of FISU.

Participating countries must therefore have insurance for the medical care of the whole delegation. Only first aid procedures related to the Games will be covered by the OC and only for accredited persons.

4.3 PROTESTS

Referring to Regulations
for the 26th Winter Universiade 2013 Trentino

All protests must be lodged with the Referee in writing. At the same time 50 euro (EUR) or other convertible currency to the same value must be deposited.

4.4 MEDICAL CARE

Referring to Regulations
for the 26th Winter Universiade 2013 Trentino

The Organising Committee will ensure: free adequate medical assistance for the FISU Family, participants and all accredited persons during the Winter Universiade.

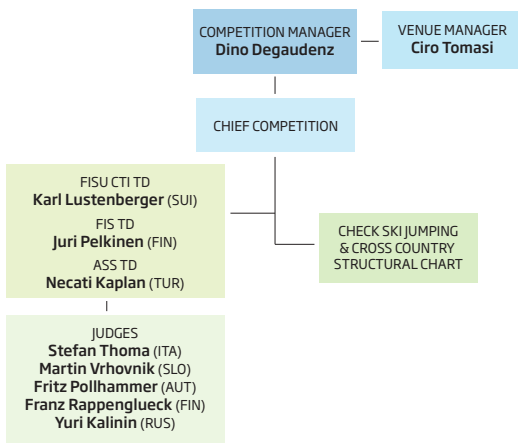




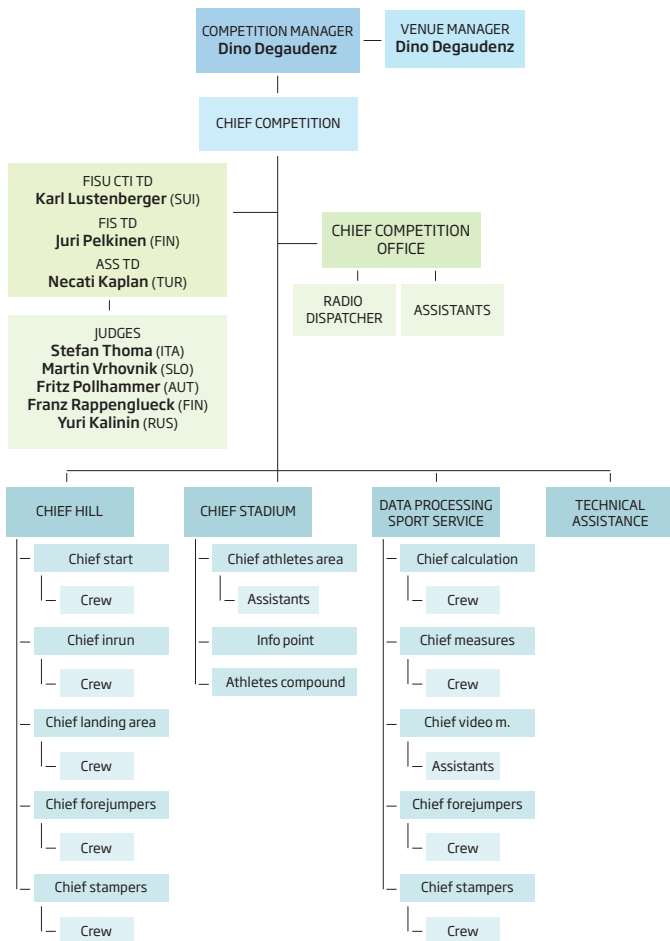
5. Competition Management

5.1 NORDIC COMBINED STRUCTURAL CHART

Lago di Tesero - Predazzo

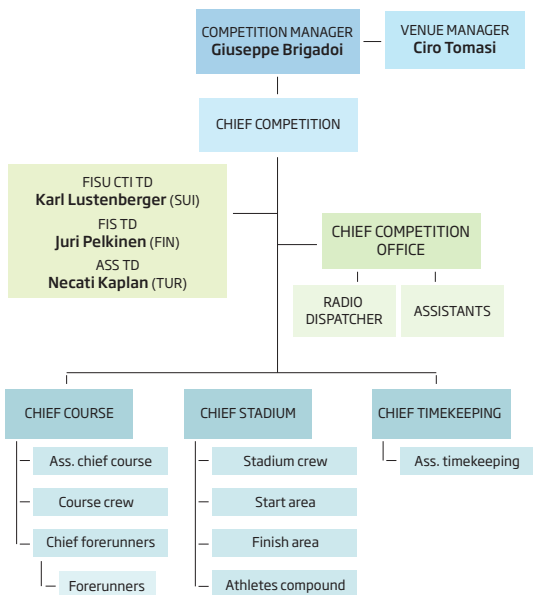


Predazzo





Lago di Tesero



Competition Manager	Nordic Skiing	Cristina Bellante	cristina.bellante@universiadetrentino.org
	Cross Country	Giuseppe Brigadoi	Ph. 0039 0462 352013 giuseppe.brigadoi@universiadetrentino.org
	Ski Jumping	Dino Degaudenz	Ph. 0039 0462 508200 dino.degaudenz@universiadetrentino.org
Venue Manager	Lago di Tesero	Ciro Tomasi	ciro.tomasi@universiadetrentino.org
	Predazzo	Dino Degaudenz	dino.degaudenz@universiadetrentino.org
	Valli di Fiemme e Fassa	Giacomo Boninsegna	giacomo.boninsegna@universiadetrentino.org

ITOs: INTERNATIONAL TECHNICAL OFFICIALS

FISU & FIS Technical Delegates		
Federation	Name	Country
FISU Technical Delegate	Karl Lustenberger	SUI
FIS Technical Delegate	Juri Pelkinen	FIN
FIS Technical Delegate Assistant	Necati Kaplan	TUR

Judges	
Name	Country
Stefan Thoma	ITA
Martin Vrhovnik	SLO
Fritz Pollhammer	AUT
Franz Rappenglueck	GER
Yuri Kalinin	RUS





5.2 COMPETITION FORMAT

Nordic Combined			
Event	Individual HS 106 - Individual Gundersen 10km	Mass Start HS 106 - Mass Start 10km	Team HS 106 - Team 3x5km
Competition Format	<ul style="list-style-type: none">› 1 round of SJ followed by 10 km CC Skiing› Register 8 compet. of whom only 6 may take part	<ul style="list-style-type: none">› 10 km CC Skiing followed by 2 rounds in SJ.› 1st round of SJ is in reverse order of the CC Skiing results› Register 8 compet. of whom only 6 may take part	<ul style="list-style-type: none">› 3 participants per team› 1 round of SJ followed by 3x5km team really CC Skiing› 1 team per Country

5.3 FINAL ENTRIES - DEADLINES

Deadline	Form Type	Entry Form	Contents
11.09.2013	Q-1	Quantitative Entry	Confirm number of participants
11.11.2013	N-5 N-12 N-14 I-5 I-12	Nominative Entry Nominative Entry Nominative Entry Delegation Individual Entry Individual Entry	Confirm name of participants
	Official Letter	Payment of 50% of total cost of the stay per participant and nominated Judges of the Delegations	
	Athlete Biography	Competitors / Teams biography	Information for media
	PPC Form	Planned Program Content	
	N-16	Nominative Entry - Travel	Travel Information





5.4 CLOTHING AND EQUIPMENT

Equipment/Materials Pre-inspection

Each competitor will have the possibility to get his/her equipment inspected starting from the unofficial/official training day and is responsible to follow FIS rules, unless no additional FISU regulation is adopted.

Ski Test and Warm-Up Area: for Cross-Country Skiing

Depending on snow consistency and conditions ski testing and warm-up areas will be additionally prepared; otherwise the official competition courses will be used until 5 minutes before start.

Start and Finish Area

The start and finish area will be organized same as for Cross-Country Skiing.

Team Waxing Cabins

All waxing cabins are in the Stadium area and every team will have at least one. Smaller teams may have to share a cabin.

6. Draws and Technical Meetings

TECHNICAL MEETINGS			
Date	Time	Description	Location
Dec. 11	10:00	1 st Technical Committee Meeting	Ski Jumping Stadium Predazzo
	11:00	1 st Team Captains Meeting	Ski Jumping Stadium Predazzo
Dec. 12	18:45	Team Captains Meeting	Ski Jumping Stadium Predazzo
Dec. 15	16:00	Team Captains Meeting	Ski Jumping Stadium Predazzo
Dec. 17	18:00	Team Captains Meeting	Ski Jumping Stadium Predazzo

CTI - UH MEETINGS			
Date	Time	Description	Location
Dec. 8	14:00	First CTI-UH meeting	Hotel Lagorai
Dec. 18	20:00	Final CTI-UH Meeting (followed by CTI reception)	San Bartolameo





7. Competition Schedule & Venues

Refer to documents published at the end, page A11 >

7.1 MEDALS

TOTAL EVENTS - 3 MEDALS	
Men	Description
HS 106 Individual Gundersen	10 km
HS 106 Mass Start	10 km
HS 106 Team	3x5 km

7.2 TRAINING DATES

OFFICIAL TRAININGS - DATES		
Date	Time	Description
Dec. 12	10:00 - 11:30	HS106 (Predazzo)
	17:00 - 18:00	Cross Country Skiing (Lago di Tesero)
Dec. 15	13:30 - 14:30	Mass Start HS 106 (Predazzo)
	17:30 - 18:30	Mass Start Cross Country Skiing (Lago di Tesero)
Dec. 17	09:30 - 11:00	Team HS106 (Predazzo)
	17:00 - 18:00	Team Cross Country Skiing 3 x 5 km (Lago di Tesero)

Lago di Tesero-Predazzo - Official Competition & Training Schedule

Refer to documents published at the end, page A12 >

7.3 COMPETITION DATES

COMPETITION DATES			
Date	Time	Description	Location
Fri. 13 Dec.	10:00-10:45 17:00-18:00	HS 106 Individual Gundersen 10 km	Ski Jumping Stadium Lago di Tesero
Mon. 16 Dec.	14:15-15:30 18:00-19:00	Mass Start 10 km Mass Start HS 106	Lago di Tesero Ski Jumping Stadium
Wed. 18 Dec.	10:00-11:00 14:00-14:45	HS 106 Team 3 x 5 km Relay	Ski Jumping Stadium Lago di Tesero

7.4 DAY BY DAY PROGRAM

Refer to documents published at the end, page A13 >





8. Ceremonies

FLOWER & MEDAL CEREMONY

The Organising Committee will provide medals, the design of which shall be approved by the FISU Executive Committee.

Individual Events:

The medals will be awarded to the first three competitors in individual events

Team Event:

The medals will be awarded to the first three teams:

- › Third: Bronze medal
- › Second: Silver/Silver gilt medal;
- › First: Gold/Gilt medal;

In specific sports, where required by the ISF regulations, two (2) bronze medals will be awarded.

The detailed rules concerning this procedure shall be in accordance with the rules of the appropriate ISF.

The official languages for the awarding ceremonies in the stadium will be English and the language of the organising country.

In addition to medals, awards may be given only after agreement with the FISU Executive Committee.

During Medal Awarding Ceremony, the athletes are not allowed to bring on the podium national flags or any religious or cultural symbols and are expected to take caps off.

Medal Ceremony Timetable			
Date	Time	Location	Discipline
Fri. 13 Dec.	20:30	Predazzo, Piazza SS. Filippo e Giacomo	NC - Ind. Gundersen
Tue. 17 Dec.	20:30	Predazzo, Piazza SS. Filippo e Giacomo	NC - Mass Start
Wed. 18 Dec.	20:30	Moena, medal plaza	NC - Team 3x5km

9. General Information

9.1 RESULTS DISTRIBUTION

	Start List	Unofficial Results	Official Results	Weather Conditions	Daily Programme
Competition Office	X		X	X	X
Athletes Compound	X	X	X	X	X
Press Center	X		X	X	X
Accommodation Sites (notice board)	X		X	X	X
www.universitadeltrentino.org	X		X	X	X

9.2 OPENING & CLOSING CEREMONY

Opening Ceremony	
Date	11 December 2013
Time	18.00
Location	Trento Main Square

Closing Ceremony	
Date	21 December 2013
Time	18.00
Location	Alba di Canazei





10. Doping Control Rules & Procedures

Referring to Regulations for the 26th Winter Universiade 2013 Trentino

Doping control will be carried out in the CC Stadium at Lago di Tesero or in the SJ Stadium at Predazzo. An adequate well prepared space is already available, same as for the FIS Nordic SKI WCH 2013.

Athletes to be tested will be accompanied by marshals.

At the first TCM medical responsible staff for doping control will give adequate information to all team officials.

11. Maps, Venue Plans and Technical Data

Refer to documents published at the end, page A14 >

12. Contacts

Sport & Venue Director	Ubaldo Prucker	Office 0039 0461 499009 Ph. 0039 366 7888599 ubaldo.prucker@universiadetrentino.org
Assistant	Michela Filippi	Office 0039 0461 499297 Ph. 0039 334 6660598 michela.filippi@universiadetrentino.org

Competition & Venue Management

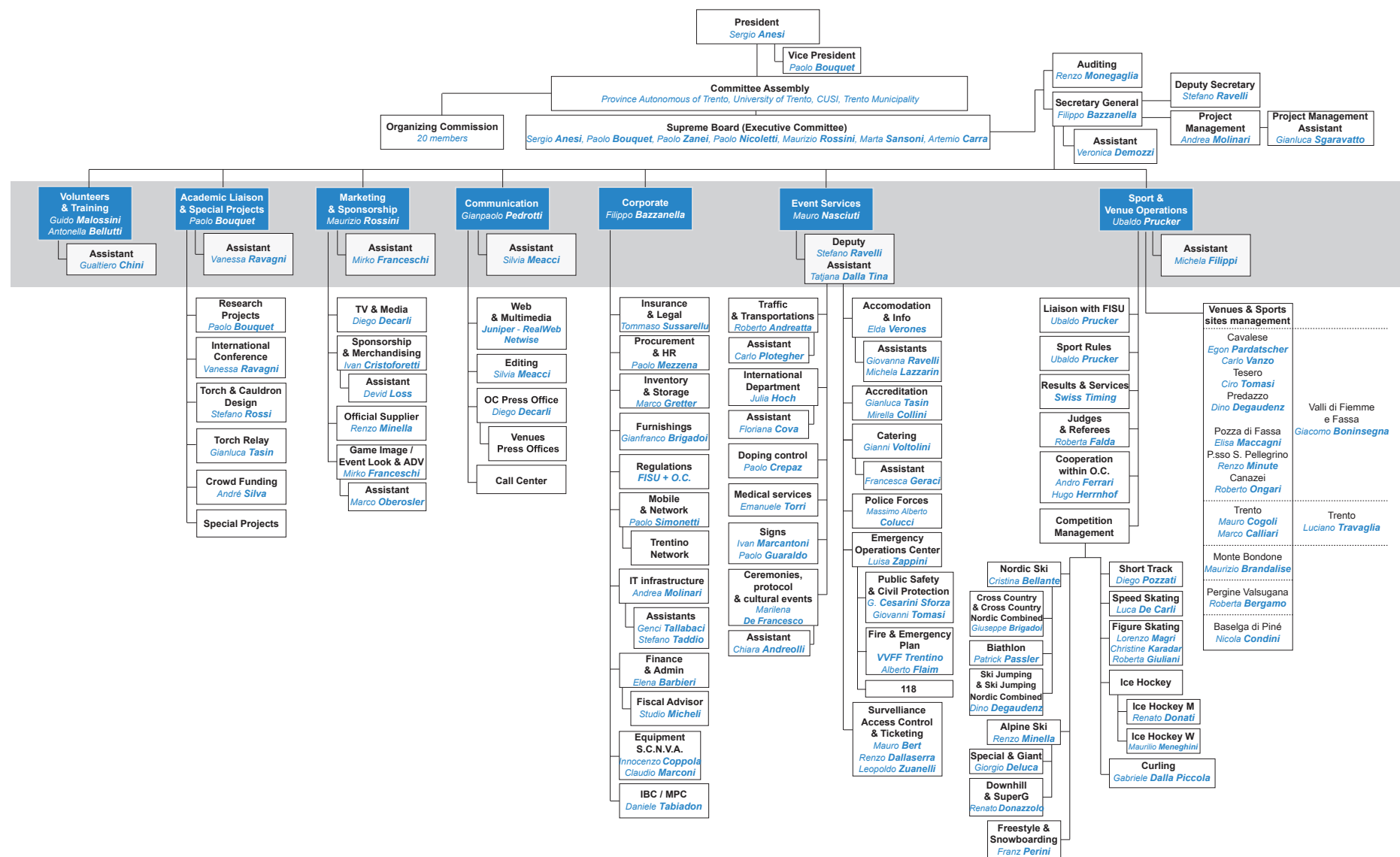
Competition Manager	Nordic Skiing	Cristina Bellante	cristina.bellante@universiadetrentino.org
	Cross Country	Giuseppe Brigadoi	Ph. 0039 0462 352013 giuseppe.brigadoi@universiadetrentino.org
	Ski Jumping	Dino Degaudenz	Ph. 0039 0462 508200 dino.degaudenz@universiadetrentino.org
Venue Manager	Lago di Tesero	Ciro Tomasi	ciro.tomasi@universiadetrentino.org
	Predazzo	Dino Degaudenz	dino.degaudenz@universiadetrentino.org
	Valli di Fiemme e Fassa	Giacomo Boninsegna	giacomo.boninsegna@universiadetrentino.org

Links:

<http://www.universiadetrentino.org/>

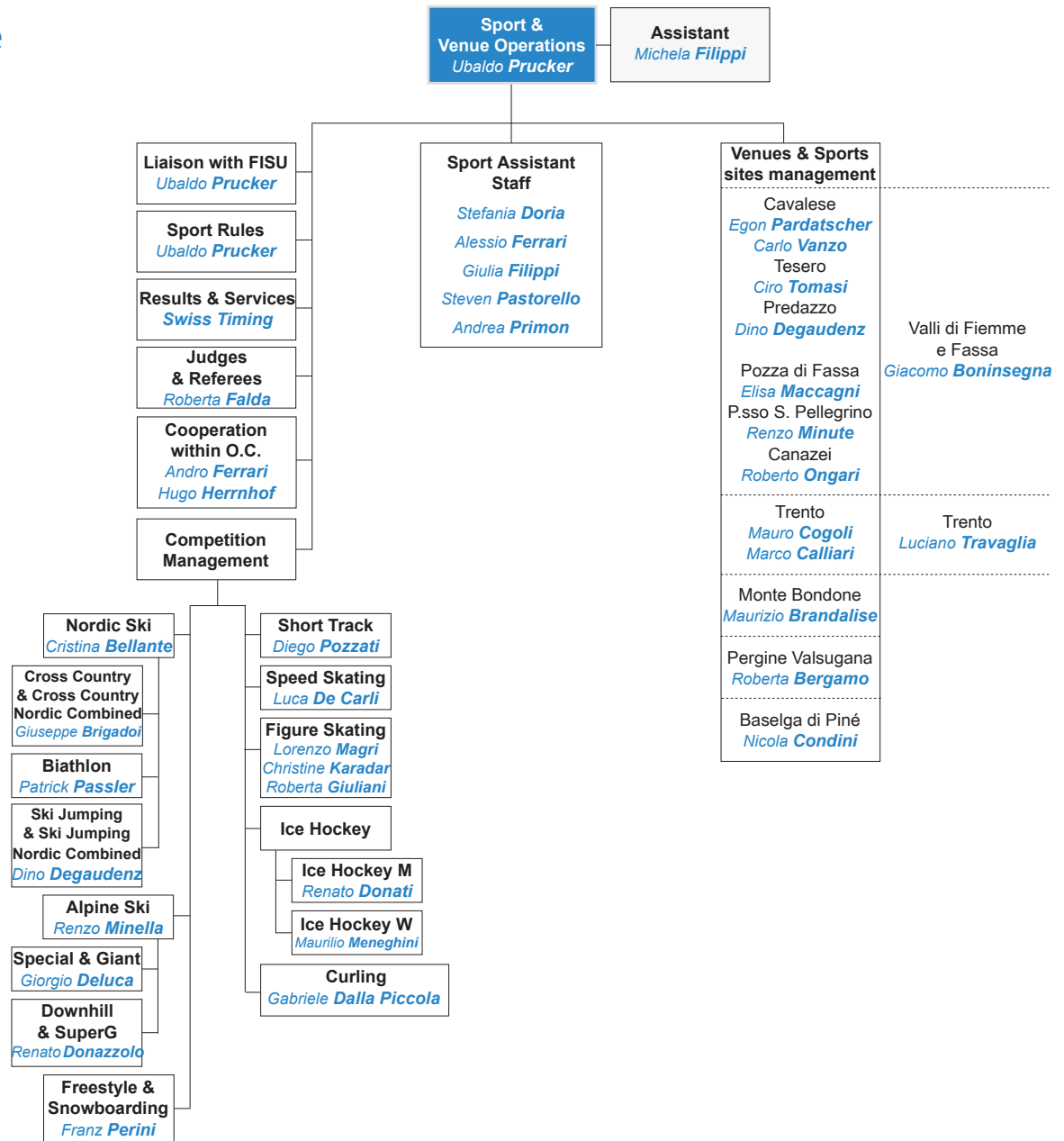


Organising Committee Structural Chart (OC)





Sports & Venues Organisational Structure





DISTANCES - Km

	TRENTO - Railroad station	MONTE BONDONE - Montesel	PERGINE VALSUGANA - Ice Stadium	MIOLA DI PINÈ - Ice Rink Piné	CAVALESE - Ice Stadium	LAGO DI TESERO	PREDAZZO - Stalimen	PASSO SAN PELLEGRINO	POZZA DI FASSA - Aloch	ALBA DI CANAZEI - Ice Stadium "Scola"
TRENTO - Railroad station		20	12	20	64	69	79	97	95	105
MONTE BONDONE - Montesel	20		37	45	85	90	100	118	116	126
PERGINE VALSUGANA - Ice Stadium	12	37		10	48	49	58	76	74	84
MIOLA DI PINÈ - Ice Rink Piné	20	45	10		38	37	48	66	64	74
CAVALESE - Ice Stadium	64	85	48	38		5	14	32	30	40
LAGO DI TESERO	69	90	49	37	5		10	28	26	36
PREDAZZO - Stalimen	79	100	58	48	14	10		18	17	27
PASSO SAN PELLEGRINO	97	118	76	66	32	28	18		19	29
POZZA DI FASSA - Aloch	95	116	74	64	30	26	17	19		12
ALBA DI CANAZEI - Ice Stadium "Scola"	105	126	84	74	40	36	27	29	12	

	Trento
	Monte Bondone
	Pergine Valsugana
	Miola di Pinè
	Cavalese
	Lago di Tesero
	Predazzo
	Passo S. Pellegrino
	Pozza di Fassa
	Alba di Canazei



TRANSPORT Trento - Predazzo





TRANSPORT

Trento - Lago di Tesero





DISTANCE

Trento Train Station - San Bartolameo (MOC)

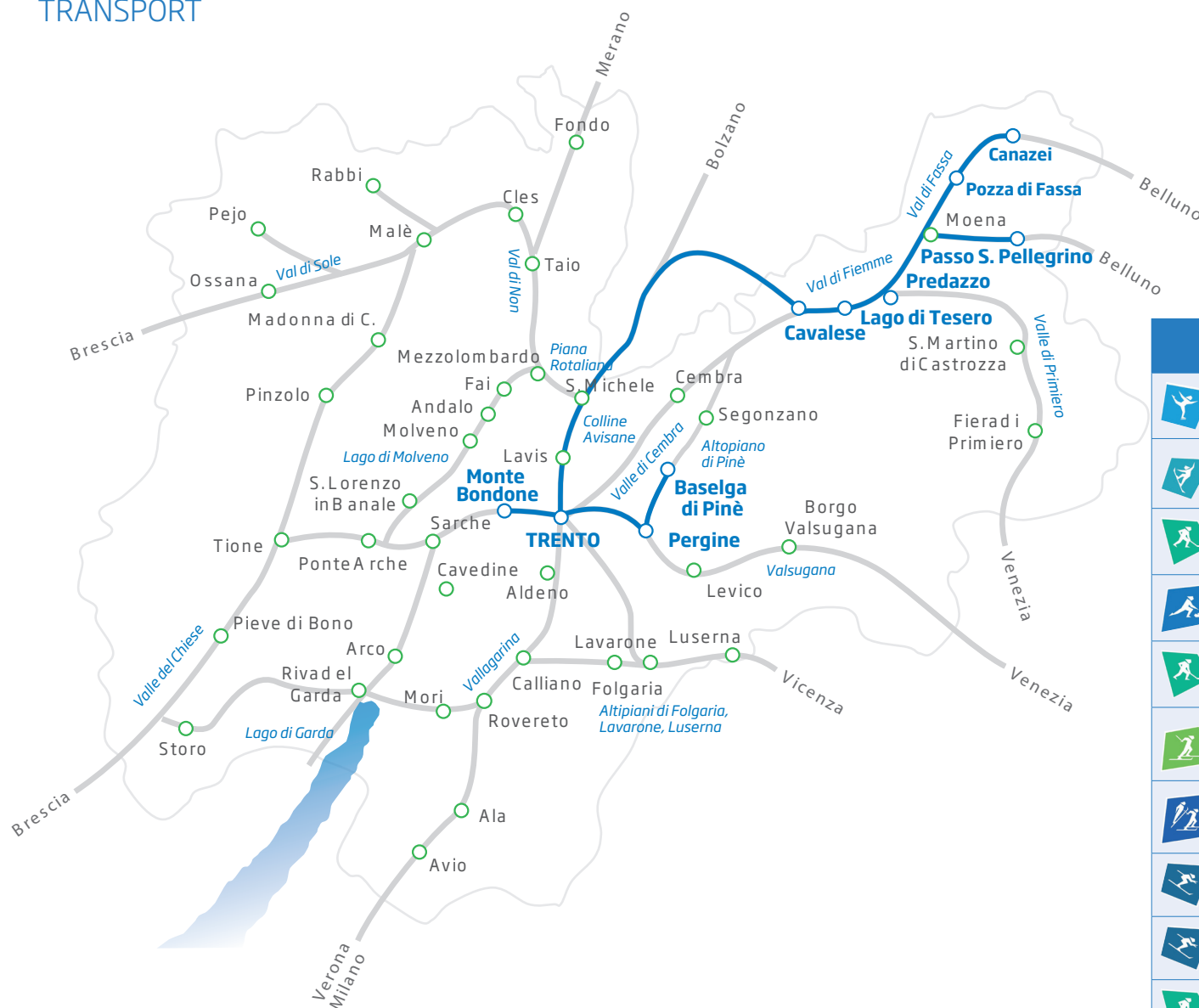


DISTANCE FROM TRAIN STATION

San Bartolameo	5 km
----------------	------



TRANSPORT



DISTANCE FROM TRENTO		
 	Trento	
 	Monte Bondone	20 km
	Pergine Valsugana	12 km
 	Baselga di Pinè	20 km
	Cavalese	64 km
  	Lago di Tesero	69 km
 	Predazzo	79 km
	Passo S. Pellegrino	97 km
	Pozza di Fassa	95 km
	Alba di Canazei	105 km

DISTANCES FROM VENUES

	TRENTO - Railroad station	MONTE BONDONE - Montesel	PERGINE VALSUGANA - Ice Stadium	MIOLA DI PINÈ - Ice Rink Piné	CAVALESE - Ice Stadium	LAGO DI TESERO	PREDAZZO - Stalimen	PASSO SAN PELLEGRINO	POZZA DI FASSA - Aloch	ALBA DI CANAZEI - Ice Stadium "Scola"
TRENTO - Railroad station		20	12	20	64	69	79	97	95	105
MONTE BONDONE - Montesel	20		37	45	85	90	100	118	116	126
PERGINE VALSUGANA - Ice Stadium	12	37		10	48	49	58	76	74	84
MIOLA DI PINÈ - Ice Rink Piné	20	45	10		38	37	48	66	64	74
CAVALESE - Ice Stadium	64	85	48	38		5	14	32	30	40
LAGO DI TESERO	69	90	49	37	5		10	28	26	36
PREDAZZO - Stalimen	79	100	58	48	14	10		18	17	27
PASSO SAN PELLEGRINO	97	118	76	66	32	28	18		19	29
POZZA DI FASSA - Aloch	95	116	74	64	30	26	17	19		12
ALBA DI CANAZEI - Ice Stadium "Scola"	105	126	84	74	40	36	27	29	12	

DISTANCES FROM VENUES

	TRENTO - Railroad station	MONTE BONDONE - Montesel	PERGINE VALSUGANA - Ice Stadium	MIOLA DI PINÈ - Ice Rink Piné	CAVALESE - Ice Stadium	LAGO DI TESERO	PREDAZZO - Stalimen	PASSO SAN PELLEGRINO	POZZA DI FASSA - Aloch	ALBA DI CANAZEI - Ice Stadium "Scola"
TRENTO - Railroad station		20	12	20	64	69	79	97	95	105
MONTE BONDONE - Montesel	20		37	45	85	90	100	118	116	126
PERGINE VALSUGANA - Ice Stadium	12	37		10	48	49	58	76	74	84
MIOLA DI PINÈ - Ice Rink Piné	20	45	10		38	37	48	66	64	74
CAVALESE - Ice Stadium	64	85	48	38		5	14	32	30	40
LAGO DI TESERO	69	90	49	37	5		10	28	26	36
PREDAZZO - Stalimen	79	100	58	48	14	10		18	17	27
PASSO SAN PELLEGRINO	97	118	76	66	32	28	18		19	29
POZZA DI FASSA - Aloch	95	116	74	64	30	26	17	19		12
ALBA DI CANAZEI - Ice Stadium "Scola"	105	126	84	74	40	36	27	29	12	



CLUSTER 4 MAP - Predazzo



○ DELEGATION




COMPETITION SCHEDULE & VENUES

XXVI Winter Universiade Trentino 2013 - Competition Schedule, December 11th-21st, 2013													
DECEMBER	TUE 10 DAY 0	WED 11 DAY 1	THU 12 DAY 2	FRI 13 DAY 3	SAT 14 DAY 4	SUN 15 DAY 5	MON 16 DAY 6	TUE 17 DAY 7	WED 18 DAY 8	THU 19 DAY 9	FRI 20 DAY 10	SAT 21 DAY 11	
Ceremonies		Trento Opening Ceremony 18:00										Canazei Closing Ceremony 18:00	
Passo San Pellegrino Pozza di Fassa	DH, SG Alpine Skiing 9:00-12:00 Free Skiing W/M DH	Alpine Skiing 08:00-9:00 Insp. W 08:30-9:30 Insp. M 10:30 Training W DH 11:30 Training M DH	Alpine Skiing 08:00-9:00 Insp. W 08:30-9:45 Insp. M 10:00 Training W DH 12:00 Training M DH	Alpine Skiing 10:00 DH W 12:00 DH M	Alpine Skiing 08:00-09:00 Insp. M 10:00 SG M	Alpine Skiing 08:00-09:00 Insp. W 10:00 SG W	Alpine Skiing 09:30-12:00 Free Skiing GS Pozza	Alpine Skiing 10:00 GS M 1 st M 13:00 GS M 2 nd M	Alpine Skiing 10:00 GS W 1 st M 13:00 GS W 2 nd M AS Combined	Alpine Skiing 17:00 SL W 1 st M 20:00 SL W 2 nd M AS Combined	Alpine Skiing 17:00 SL W 1 st M 20:00 SL W 2 nd M AS Combined	Alpine Skiing Reserve Day	10
Lago di Tesero	Cross-Country Unoff. Training W/M Passo Lavazè	Cross-Country 12:30-14:30 Off. Train. Skiathlon W/M Unoff. Training W/M Passo Lavazè	Cross-Country 12:45 Skiathlon W 5km(C) + 5km(F) 15:15 Skiathlon M 7,5km(C) + 7,5km(F)	Cross-Country 18:00-19:30 Off. Train. Sprint Unoff. Training W/M Passo Lavazè	Cross-Country 12:30 Official Train. W/M 13:40 Sprint Q (C) W/M 16:00 Sprint F (C) W/M	Cross-Country 15:30 Mixed T. Sprint Q W/M 16:50 Mixed T. Sprint F W/M	Cross-Country 16:00-18:00 Off. Training Individual W/M	Cross-Country 13:30 Ind. 5km (F) W 15:15 Ind. 10km (F) M	Cross-Country 16:00-18:00 Off. Training Relay W/M Unoff. Training W/M Passo Lavazè During the day	Cross-Country 13:00 Relay 3x5km (C+FF) W 14:50 Relay 4x10km (C+FF) M	Cross-Country Official Training Mass Start 16:00 15km(C) W Mass Start	Cross-Country Official Training Mass Start 10:00 30km (C) M Mass Start	11
Predazzo Lago di Tesero	Nordic Combined		Nordic Combined 10:00-11:30 Off. Tr. Ind. Gundersen HS 106 17:00 Ind. Gundersen 10km	Nordic Combined 10:00 Individual HS 106 17:00 Ind. Gundersen 10km		Nordic Combined 13:30 Off. Train Mass Start HS 106 17:30 Off. Train Mass Start 10 km	Nordic Combined 14:15 Mass Start 10km 18:00 Mass Start HS 106	Nordic Combined 9:30 Off. Train. Team HS 106 17:00 Off. Train. 3x5km	Nordic Combined 10:00 Team HS 106 14:00 Team 3x5km				3
Predazzo	Ski Jumping		Ski Jumping 14:00-15:00 Off. Train W HS 106 15:00-16:00 Off. Train M HS 106	Ski Jumping 17:00 Trial M HS 106 Off. Train M HS 106	Ski Jumping 17:00 Trial M W/M 18:00 HS 106 M/W		Ski Jumping 11:00-13:00 Off. Train M/W Mixed Relay	Ski Jumping 11:00 Trial Mixed Relay 12:00 HS 106 Mixed Relay 17:00-19:30 Off. Train M Team HS134	Ski Jumping 17:00 Trial M Team 18:00 HS 106 M Team	Ski Jumping 18:00-19:30 Off. Train M HS134	Ski Jumping 17:00 Trial M 18:00 HS 134 M		5
Monte Bondone	Snowboarding 10:00-10:20 SBX Insp. 10:30-12:30 Training W/M SBX	Snowboarding 09:00-09:15 SBX Insp. W/M 09:30-10:30 Training W/M 10:45-14:45 SBX Q W/M	Snowboarding 09:00-09:15 SBX Insp. W/M 09:30-10:30 Training W/M 10:30-12:00 SBX Finals W/M			Snowboarding 09:00-12:00 Training W/M HP	Snowboarding 08:30-09:20 HP Training 09:30-12:00 HP Q W/M	Snowboarding 08:30-09:50 HP T. SF W/M 09:00-12:00 Free riding on competition slope W/M PCS 14:30 - 15:30 10:30-10:50 HP Tr F W/M 11:00-12:00 HP Finals W/M	Snowboarding 09:00-12:00 Free riding on competition slope W/M PCS 14:30 - 15:30 10:30-10:50 HP Tr F W/M 11:00-12:00 HP Finals W/M	Snowboarding 09:00-09:30 PCS Insp. W/M 09:45-12:15 PCS Q W/M 13:00-13:20 PCS Insp. W/M 13:30-15:30 PCS Finals W/M 14:30-15:30 Training W/M SBS	Snowboarding 09:00-09:45 SBS Train W/M 10:00-12:00 SBS Q W/M	Snowboarding 08:30-09:15 SBS Tr. W/M 09:30-10:30 SBS SF W/M 10:45-11:15 SBS Tr F W/M 11:30-12:30 SBS Finals W/M	8
Lago di Tesero	Biathlon Unofficial Training	Biathlon 9:00-10:30 Unoff. Train. M 10:40-12:10 Unoff. Train W	Biathlon 09:00-10:30 Off. Train. M 10:40-12:10 Off. Train. W	Biathlon 09:20-10:10 Zero M 10:15-12:10 20km M 12:20-13:10 Zero W 13:15-14:00 7,5km W	Biathlon 08:30-10:00 Off. Train. M 10:10-11:30 Off. Train. W	Biathlon 08:50-09:40 Zero M 09:45-11:30 10km M 11:40-12:30 Zero W 12:35-14:00 7,5km W	Biathlon 09:55-10:40 Zero M 10:45-11:30 Purs. M 11:35-12:20 Zero W 12:25-13:10 Purs. W	Biathlon 09:00-11:00 Off. Train. W/M	Biathlon 11:00-12:40 Mixed Relay 2x5km W + 2x7,5km M	Biathlon 09:00-10:30 Off. Train. W/M	Biathlon 10:10-10:50 Zero M 11:00-11:50 Mass S. M 11:55-12:25 Zero W 12:30-13:10 Mass S. W		9
Alba di Canazei (1) Cavalese (2)	Ice Hockey M 16:30-19:00 ITA-LAT (1) 20:30-23:00 USA-SWE (1) 20:00-22:30 CAN-JPN (2)	Ice Hockey Official Training	Ice Hockey 16:30-19:00 RUS-GBR (1) 20:30-23:00 SVK-CZE (1) 20:00-22:30 KAZ-UKR (2)	Ice Hockey 16:30-19:00 SWE-ITA (1) 20:30-23:00 LAT-USA (1) 20:00-22:30 CAN-UKR (2)	Ice Hockey 16:30-19:00 CZE-RUS (1) 20:30-23:00 GBR-SVK (1) 20:00-22:30 KAZ-JPN (2)	Ice Hockey 16:30-19:00 ITA-USA (1) 20:30-23:00 SWE-LAT (1) 20:00-22:30 CAN-KAZ (2)	Ice Hockey 16:30-19:00 RUS-SVK (1) 20:30-23:00 CZE-GBR (1) 20:00-22:30 UKR-JPN (2)	Ice Hockey 16:30-19:00 QF(1) 20:30-23:00 QF(2) 16:00-18:30 QF(3) 20:00-22:30 QF(4)	Ice Hockey 16:30-19:00 QF(1) 20:30-23:00 QF(2) 16:00-18:30 QF(3) 20:00-22:30 QF(4)	Ice Hockey 16:30-19:00 QF(1) 20:30-23:00 QF(2) 16:00-18:30 QF(3) 20:00-22:30 QF(4)	Ice Hockey 16:30-19:00 QF(1) 20:30-23:00 QF(2) 16:00-18:30 QF(3) 20:00-22:30 QF(4)	Ice Hockey 16:30-19:00 QF(1) 20:30-23:00 QF(2) 16:00-18:30 QF(3) 20:00-22:30 QF(4)	1
Pergine	Ice Hockey W 12:00-14:30 GBR-JPN 16:00-18:30 RUS-USA 20:00-22:30 ESP-CAN	Ice Hockey Official Training	Ice Hockey 12:00-14:30 GBR-USA 16:00-18:30 CAN-RUS 20:00-22:30 ESP-JPN	Ice Hockey 12:00-14:30 ESP-RUS 16:00-18:30 CAN-GBR 20:00-22:30 USA-JPN	Ice Hockey Official Training	Ice Hockey 12:00-14:30 RUS-GBR 16:00-18:30 JPN-CAN 20:00-22:30 USA-ESP	Ice Hockey 12:00-14:30 RUS-GBR 16:00-18:30 JPN-CAN 20:00-22:30 USA-ESP	Ice Hockey Official Training	Ice Hockey 16:00-18:30 W5-F1 (R2-R3) 20:00-22:30 W5-F2 (R1-R4)	Ice Hockey 16:00-18:30 W5 place (R5-R6)	Ice Hockey 16:00-18:30 Bronze Medal 20:00-22:30 Gold Medal		1
Trento	Figure Skating Official Training	Figure Skating 10:00 - 19:38 M S	Figure Skating 16:45 - 18:07 P S 18:15 - 22:16 M F	Figure Skating 16:45 - 18:07 P S 18:15 - 22:16 M F	Figure Skating 14:00 - 17:49 F 19:15 - 22:29 D F	Figure Skating 14:00 - 17:49 F 19:15 - 22:29 D F							4
Trento	Short Track						Short Track 15:00-19:00 Unofficial Training W/M	Short Track 09:00-12:00 Off. Train. W/M 15:00-19:00 Off. Train. W/M	Short Track 11:00-13:00 Training 14:00 500m W/M 18:30 3000m Rel. W heats 5000m Rel. M heats	Short Track 11:00-13:00 Training 14:00 500m W/M 18:30 3000m Rel. W SF 5000m Rel. M SF	Short Track 11:00-13:00 Training 14:00 1000m W/M 18:30 3000m Rel. W Final 5000m Rel. M Final		8
Basiglio di Pinè	Curling Official Training W/M 09:00-10:15 W 10:45-12:00 M 13:15-14:30 M 15:00-16:15 W	Curling Official Training W/M 08:30-9:45 W 10:15-11:30 M 12:30-13:45 M 14:15-15:30 W	Curling 09:00-19:00 draw 1-2 W 13:30 Curling Opening 14:00 draw 1 M	Curling 09:00-19:00 draw 2-3 M 14:00 draw 3 W	Curling 09:00-19:00 draw 4-5 W 14:00 draw 4 M	Curling 09:00-19:00 draw 5-6 M 14:00 draw 5 W	Curling 09:00-19:00 draw 7-8 W 14:00 draw 7 M	Curling 09:00-19:00 draw 8-9 W 14:00 draw 8 M	Curling Tie Break W/M 09:00-14:00/19:00 (if required)	Curling 09:00 Semifinals W/M 15:00 Bronze Medal W/M	Curling 09:00 Gold Medal W 14:00 Gold Medal M Closing Parade		2
Monte Bondone	Freestyle Skiing			Freestyle Skiing 10:00-11:00 Ins. + Train SX W/M 13:30-15:30 Train SX W/M	Freestyle Skiing 10:00-14:00 Off. Training W/M SX	Freestyle Skiing 09:00-10:30 Train SX W/M 13:30 M 1500m 13:00-14:30 SX Finals W/M	Freestyle Skiing 09:00-10:30 Train SX W/M 13:30 M 1500m 13:00-14:30 SX Finals W/M	Freestyle Skiing 09:00-10:30 Train SX W/M 13:30 M 1500m 13:00-14:30 SX Finals W/M	Freestyle Skiing 13:00-15:00 Off. Training W/M SS	Freestyle Skiing 12:00-14:00 SS Finals W/M			4
Basiglio di Pinè	Speed Skating 10:00-12:00 Off. Tr. W/M 11:00-12:00 T & Trial Starts W/M	Speed Skating 10:00-12:00 Off. Tr. W/M 11:00-12:00 T & Trial Starts W/M	Speed Skating 10:00-12:00 Off. Train W/M 17:00-18:00 Trial Starts W/M	Speed Skating 09:00-11:00 Off. Train 12:00 W 500m 13:30 M 1500m 14:30 M 5000m 16:30-18:00 Off. Train	Speed Skating 09:00-11:00 Off. Train 12:00 W 500m 13:30 M 1500m 14:30 M 500m 16:30-18:00 Off. Train	Speed Skating 09:00-11:00 Off. Train 12:00 W 500m 13:30 M 1500m 14:30 M 500m 16:30-18:00 Off. Train	Speed Skating 09:00-11:00 Off. Train 12:00 W 500m 13:30 M 1500m 14:30 M 500m 16:30-18:00 Off. Train	Speed Skating 09:00-11:00 Off. Train 12:00 W 500m 13:30 M 1500m 14:30 M 500m 16:30-18:00 Off. Train	Speed Skating 09:00-11:00 Off. Train 12:00 W 500m 13:30 M 1500m 14:30 M 500m 16:30-18:00 Off. Train	Speed Skating 10:00-12:00 Off. Train (T.Purs) 13:00 W Team Pur. T. Trial 14:00 M Team Pur. T. Trial 16:00 Team Pur. Final W 16:30 Team Pur. Final M			12
DAILY MEDALS AWARD	0	0	5	8	8	9	3	8	10	10	13	4	78



Lago di Tesero - PREDAZZO - OFFICIAL COMPETITION & TRAINING SCHEDULE

	NORDIC COMBINED																														
	7:00	7:30	8:00	8:30	9:00	9:30	10:00	10:30	11:00	11:30	12:00	12:30	13:00	13:30	14:00	14:30	15:00	15:30	16:00	16:30	17:00	17:30	18:00	18:30	19:00	19:30	20:00	20:30	21:00	21:30	
TUESDAY 10																															
WEDNESDAY 11																															
THURSDAY 12							Off. T. Ind. Gun. HS106 10:00 - 11:30														Off. T. 10km CC 17:00 - 18:00										
FRIDAY 13							Ind. HS106 10:00- 10:45															Ind. Gun. 10 km 17:00 - 18:00									
SATURDAY 14																															
SUNDAY 15														Off. T. Mass HS106 13:30 - 14:30								Off. T. Mass 10km 17:30 - 18:30									
MONDAY 16															Mass Start 10km 14:15 - 15:30								Mass HS106 18:00 - 19:00								
TUESDAY 17						Off. Train. Team HS106 09:30 - 11:00															Off. T. 3x5km 17:00 - 18:00										
WEDNESDAY 18							Team HS106 10:00 - 11:00								Team 3x5km 14:00- 14:45																
THURSDAY 19																															
FRIDAY 20																															
SATURDAY 21																															

Schedule and timetable could eventually be subject to changes

Unofficial Training
 Official Training
 Competition



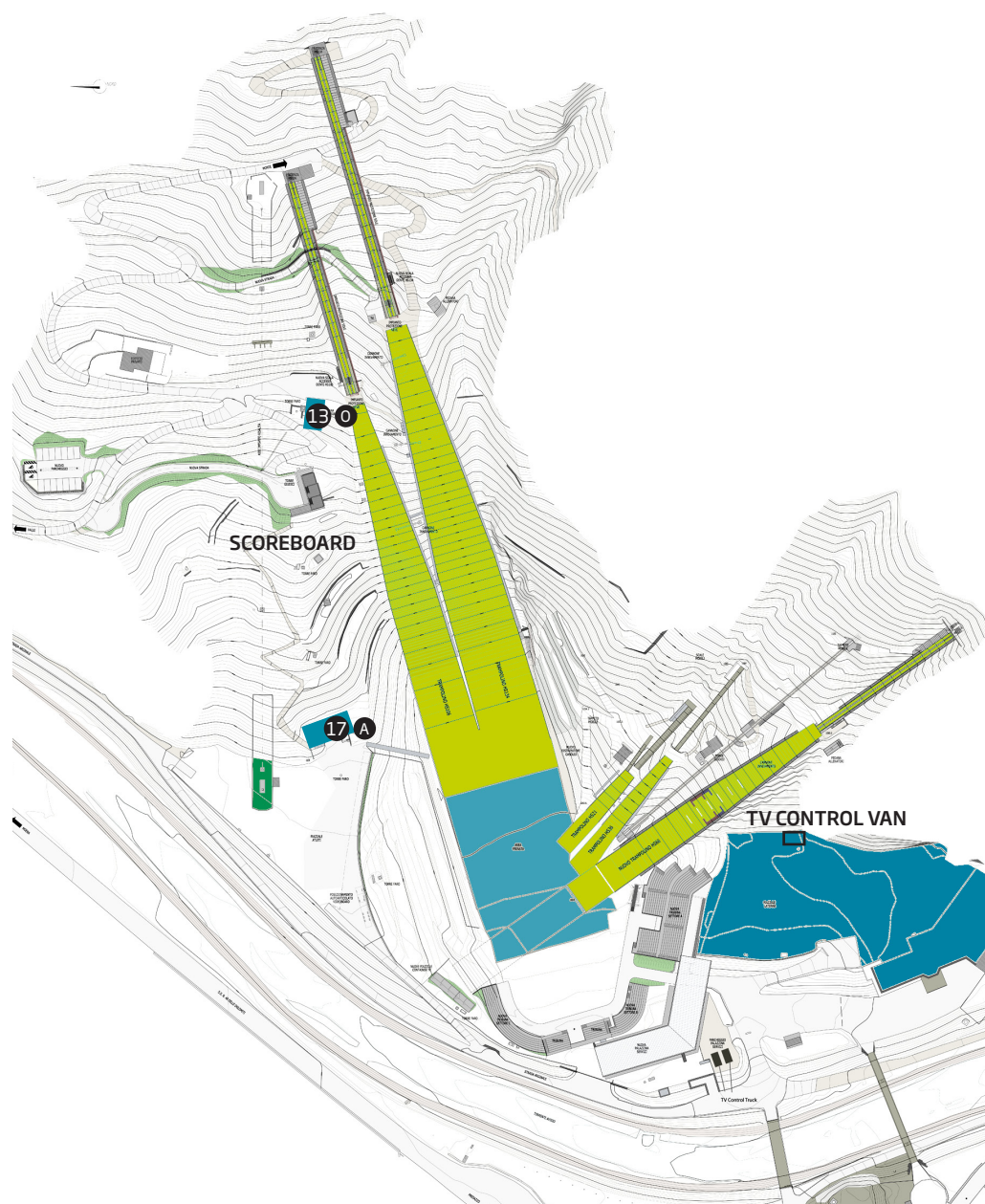
DAY BY DAY PROGRAM

Legend
Technical or CTI meetings & TCM
Official Training
Competition
Medal & Flower Ceremony

Day by Day - Nordic Combined - PREDAZZO (SKI JUMPING) & LAGO DI TESERO (CROSS COUNTRY SKIING)			
Date	Time	Activity	Location
Dec. 08	14:00	First CTI-UH meeting	Hotel Lagorai
Dec. 11	10:00	1st Technical Committee Meeting	Ski Jumping Stadium Predazzo
	11:00	1st Team Captain Meeting	Ski Jumping Stadium Predazzo
Dec. 12	10:00 - 11:30	Off. Tr. - Ind. Gundersen HS 106	Ski Jumping Stadium Predazzo
	17:00 - 18:00	Off. Tr. - Ind. Gundersen CC Skiing	Lago di Tesero
	18:45	TCM	Ski Jumping Stadium Predazzo
Dec. 13	10:00 - 10:45	Competition - Ind. Gundersen HS 106	Ski Jumping Stadium Predazzo
	17:00 - 18:00	Competition - Ind. Gundersen 10 km	Lago di Tesero
	18:00	Flower Ceremony	Lago di Tesero
	20:30	Medal Ceremony Ind. Gundersen	Predazzo
Dec. 15	13:30 - 14:30	Off. Tr. - Mass Start HS 106	Ski Jumping Stadium Predazzo
	16:00	TCM	Ski Jumping Stadium Predazzo
	17:30 - 18:30	Off. Tr. - Mass Start CC Skiing	Lago di Tesero
Dec. 16	14:15 - 15:30	Competition - Mass Start 10 km	Lago di Tesero
	18:00 - 19:00	Competition - Mass Start HS 106	Ski Jumping Stadium Predazzo
	19:00	Flower Ceremony	Ski Jumping Stadium Predazzo
Dec. 17	09:30 - 11:00	Off. Tr. - Team HS 106	Ski Jumping Stadium Predazzo
	17:00 - 18:00	Off. Tr. - Team CC Skiing 3x5km	Lago di Tesero
	18:00	TCM	Ski Jumping Stadium Predazzo
	20:30	Medal Ceremony Mass Start	Predazzo
Dec. 18	10:00 - 11:00	Competition - Team HS 106	Ski Jumping Stadium Predazzo
	14:00 - 14:45	Competition - Team 3x5km Relay	Lago di Tesero
	14:45	Flower Ceremony	Lago di Tesero
	20:00	Final CTI-UH Meeting (followed by CTI reception)	San Bartolameo
	20:30	Medal Ceremony	Moena



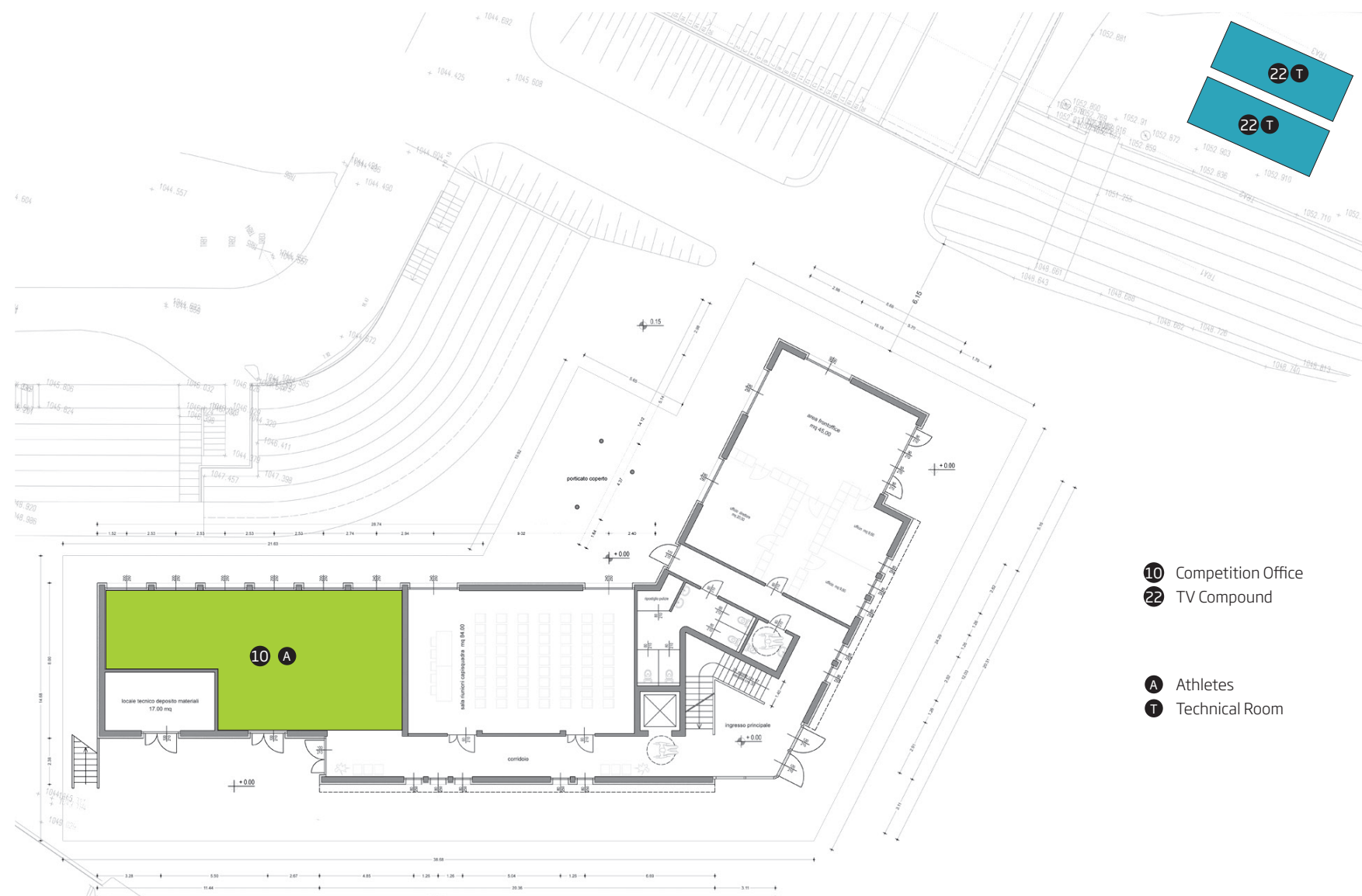
LAYOUT - Predazzo, PLANIMETRY



- 13 Timing OVR
- 17 Athletes Lounge
- A Athletes
- O O.C
- J Judges & Referees
- V Volunteers
- P Press



LAYOUT - Predazzo, FIRST FLOOR

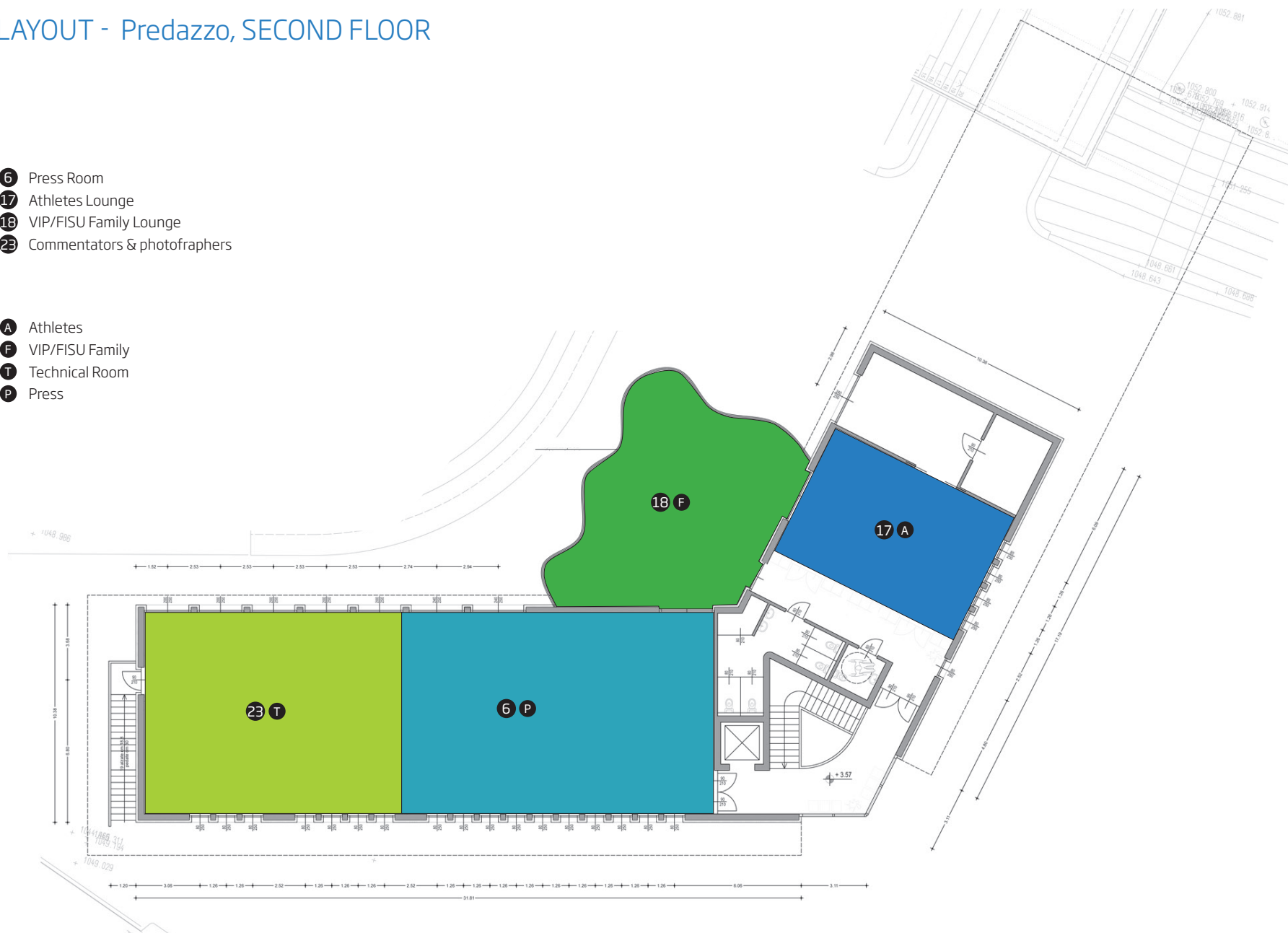




LAYOUT - Predazzo, SECOND FLOOR

- 6 Press Room
- 17 Athletes Lounge
- 18 VIP/FISU Family Lounge
- 23 Commentators & photographers

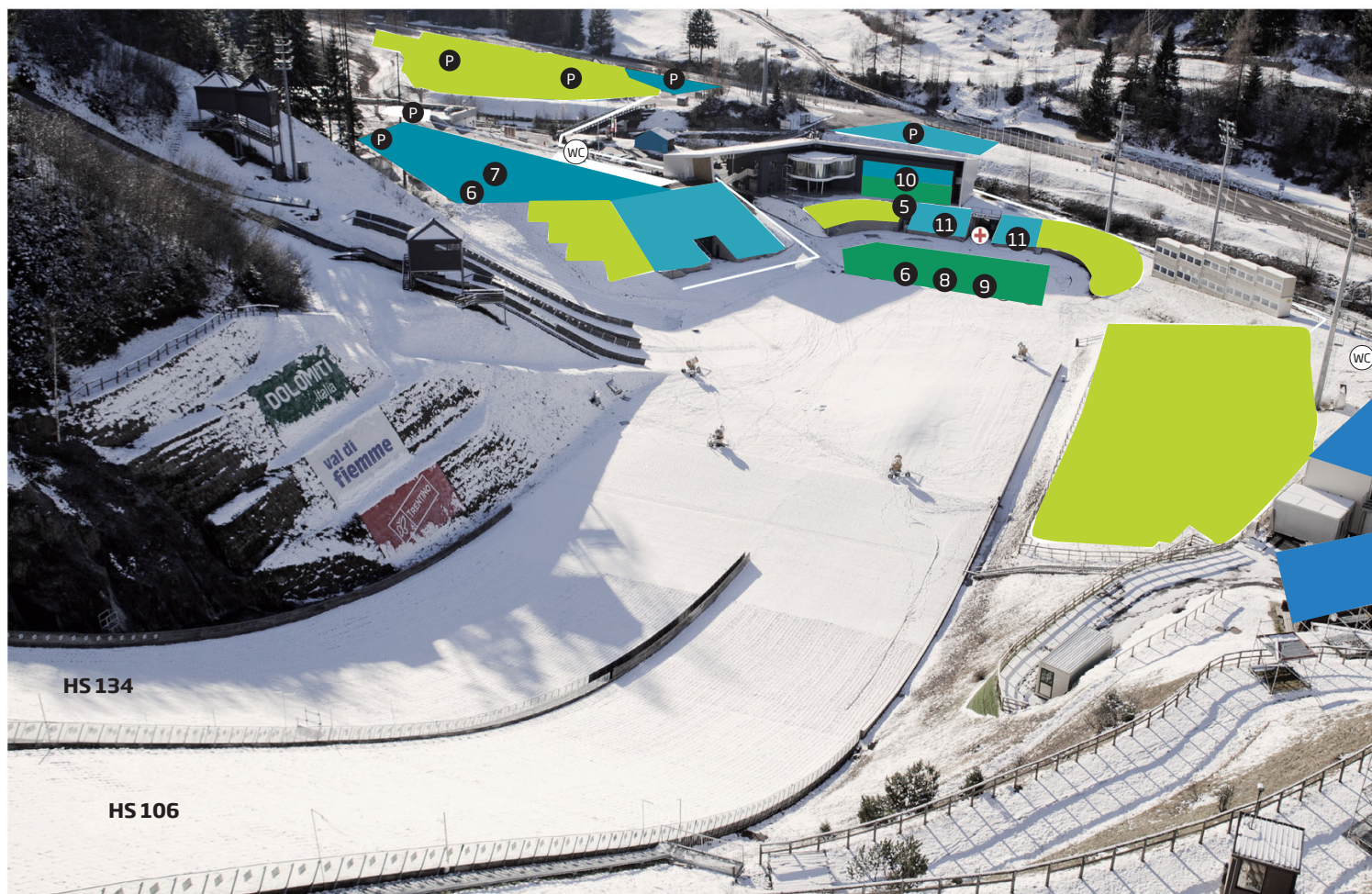
- A Athletes
- F VIP/FISU Family
- T Technical Room
- P Press



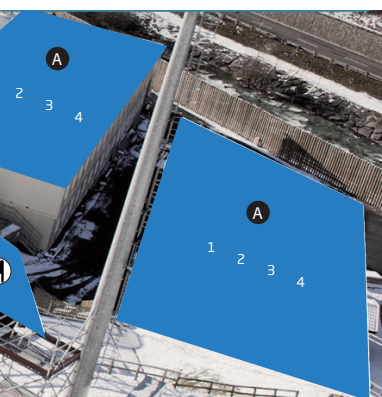


PARKING LAYOUT - Predazzo

Ski Jumping Stadium Val di Fiemme - Predazzo



- 1 Team Area
- 2 Coach Area
- 3 Sports Area
- 4 Service Area
- 5 Officials Area
- 6 TV & Radio
- 7 IBC/TV Compounds
- 8 Print Media Areas
- 9 Photographers
- 10 Sub Press Centre
- 11 VIP/FISU Family



- A Athletes
- F VIP/FISU Family
- O O.C.
- J Judges & Referees
- S Spectators
- T Technical Room
- V Volunteers
- P Press



Lago di Tesero, NORDIC COMBINED - INDIVIDUAL GUNDERSEN 10 km



* Official courses layout depending on snow conditions



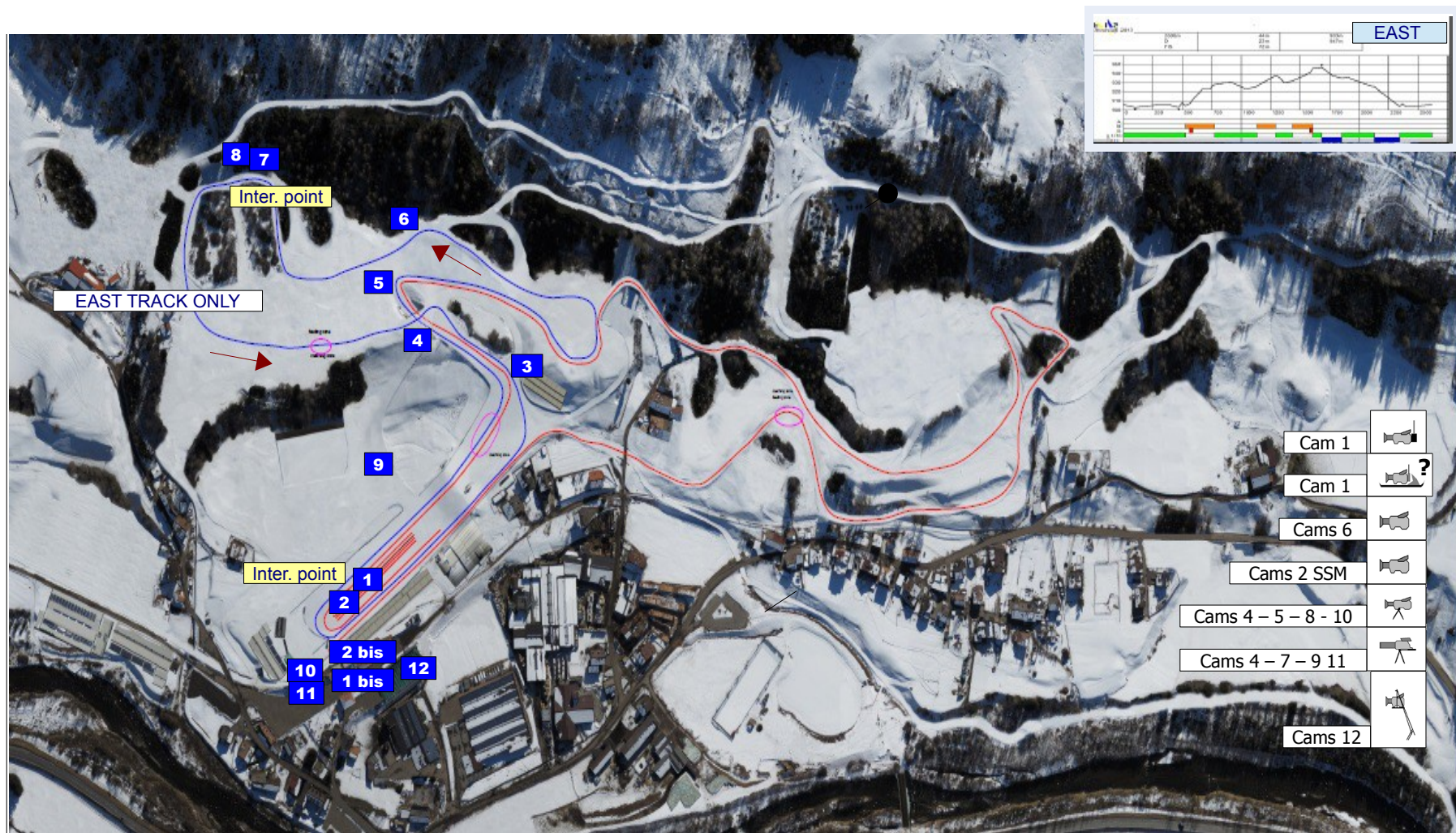
Lago di Tesero, NORDIC COMBINED - MASS START 10 km



* Official courses layout depending on snow conditions



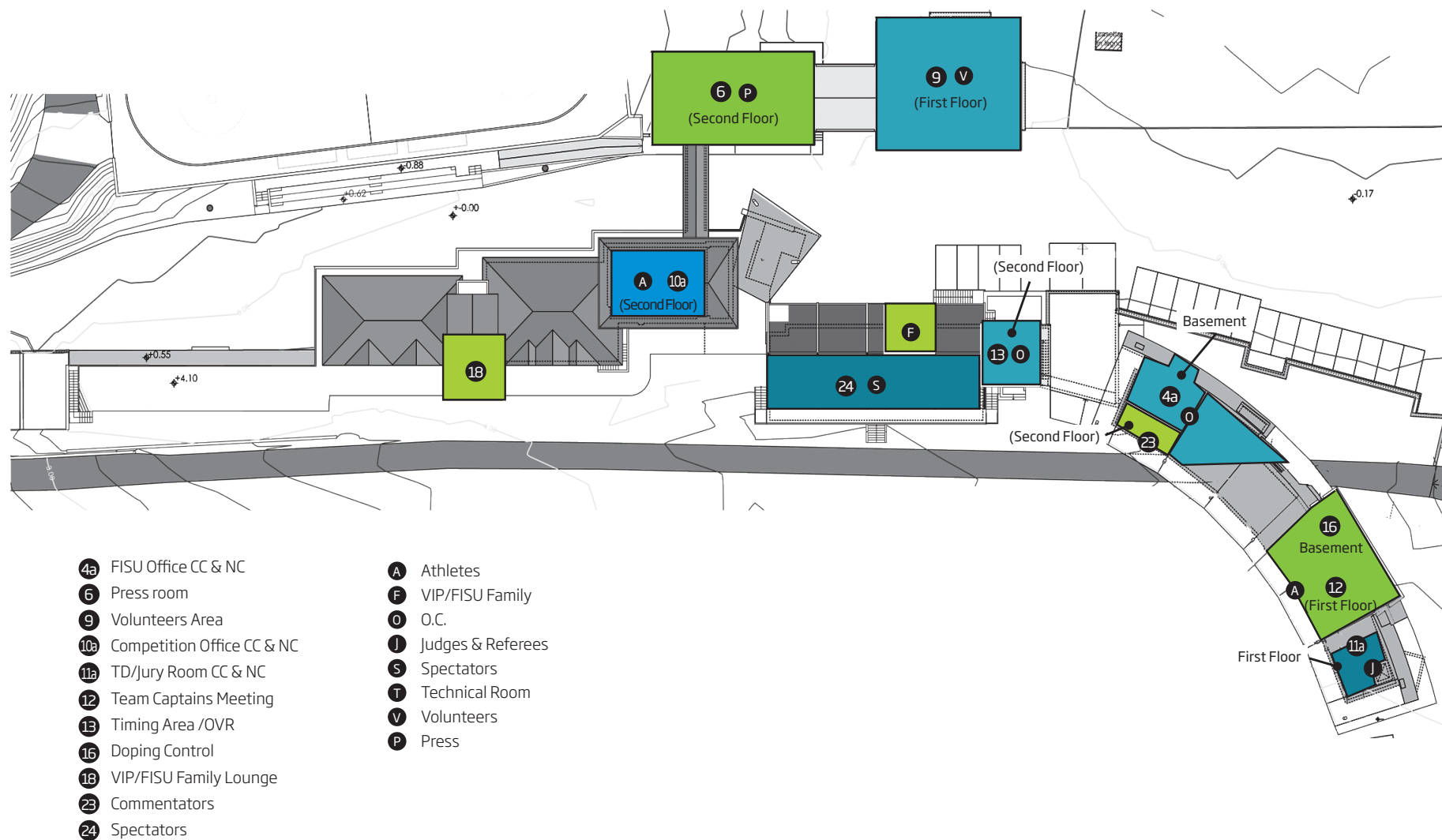
Lago di Tesero, NORDIC COMBINED - TEAM 3x5 km



* Official courses layout depending on snow conditions

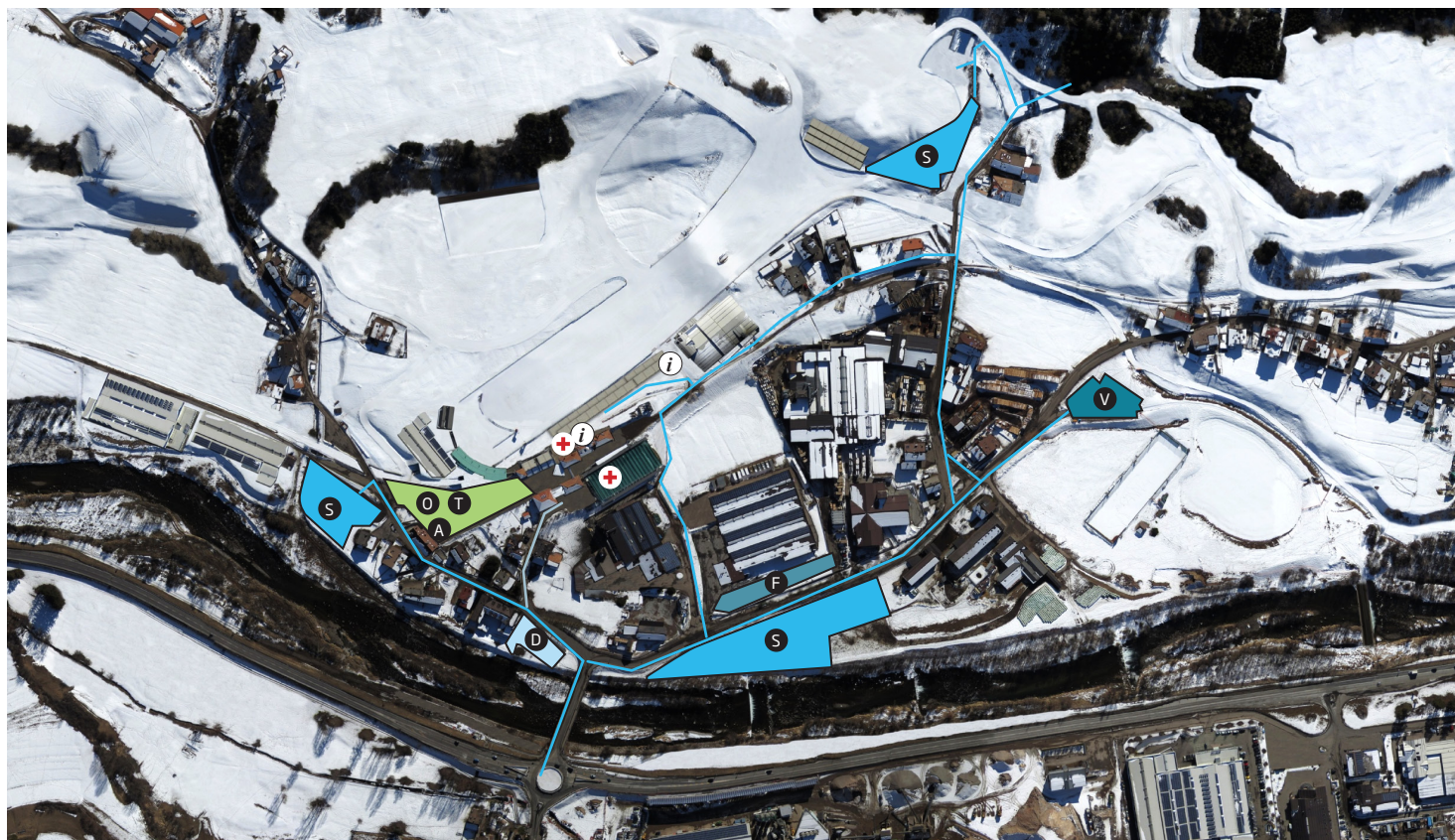


Lago di Tesero





LAYOUT - Lago di Tesero, PARKING



PARKING AREAS

- A** Athletes - Teams
- F** VIP/FISU Family
- O** O.C.
- S** Spectators
- V** Volunteers
- T** TV
- D** Disabled People Parking

Cross Country & Biathlon Stadium
Val di Fiemme - Lago di Tesero

SPUMANTE
ROTARI
TRENTODOC



Cooperazione Trentina

PREMIUM PARTNER



from 11th to 21st of December in Trentino

INSPIRED BY YOU



www.visittrentino.it/it/arrivare



Car: Brennero - Modena (A22) Motorway



Airplane: Verona, Bergamo, Milano or Venezia Airports



Train: Trento Train Station

Follow us on
www.universiadetrentino.org

...and on social network

