

Courtyard Pointe

629 East Quality Drive - American Fork, Utah

For Lease 

Information:

- \$14.50 / SF full service
- Available:
Suite E: 2,936 SF
Suite F: 3,506 SF
Suite P: 1,226 SF
- Close I-15 access
- Tenant improvement allowance available
- Beautiful view of Mt. Timpanogos
- Ample Parking



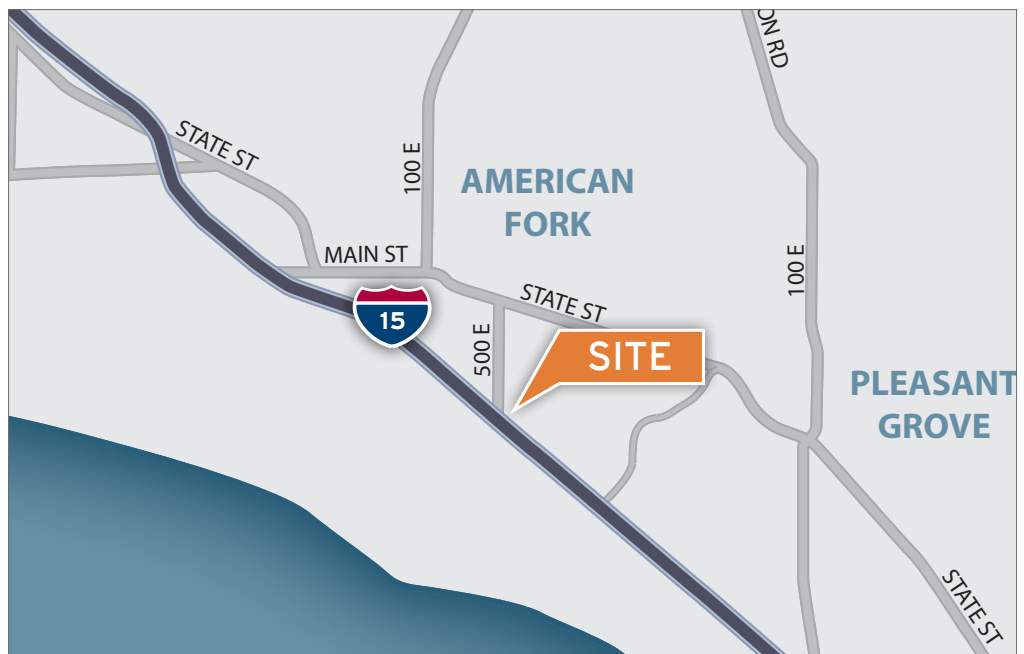
Contact:

Cody Black

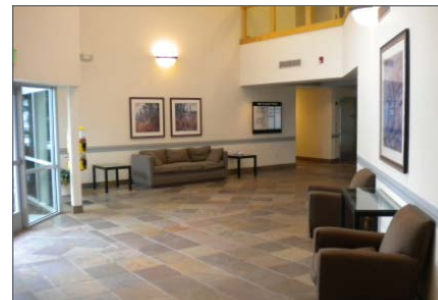
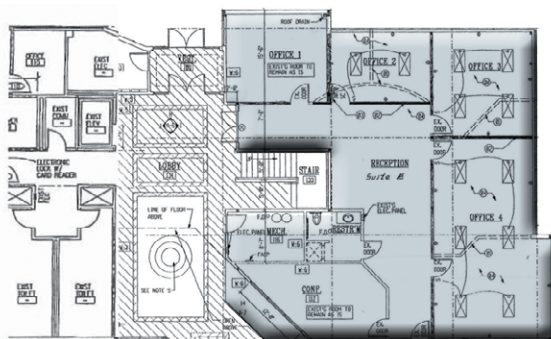
801.431.8280 office
801.687.0094 mobile
cody.black@coldwellutah.com

Shad Webb

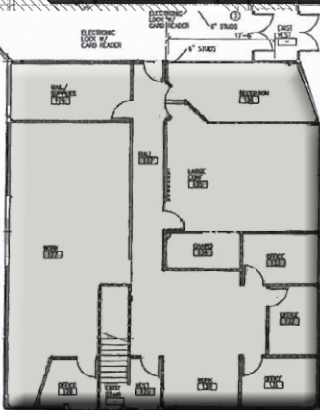
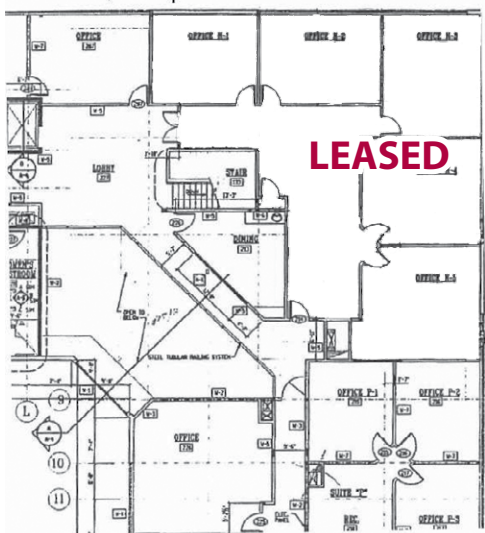
801.431.8280 office
435.459.0212 mobile
shad.webb@coldwellutah.com



North East Main Floor
Suite E - 2,936 sq.ft.



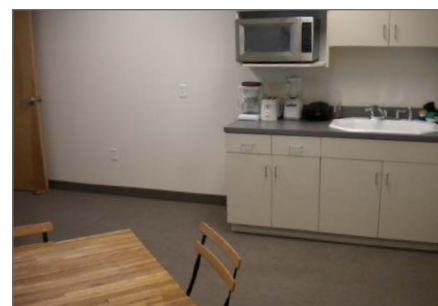
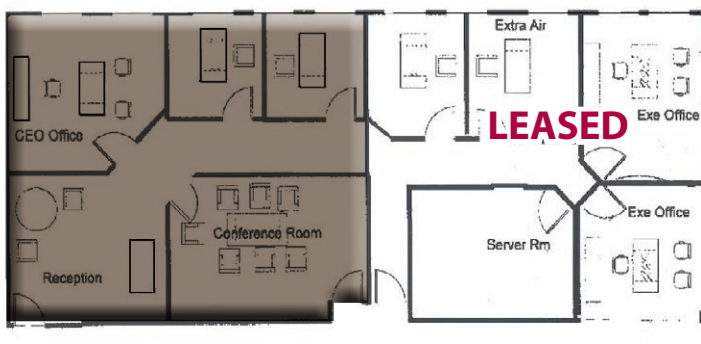
North East Corner 2nd Floor
Suite N - 2,833 sq.ft.



North East Main Floor
Suite F - 3,506 sq.ft.



Suite P - 1,226 SF
\$1,200/month full service



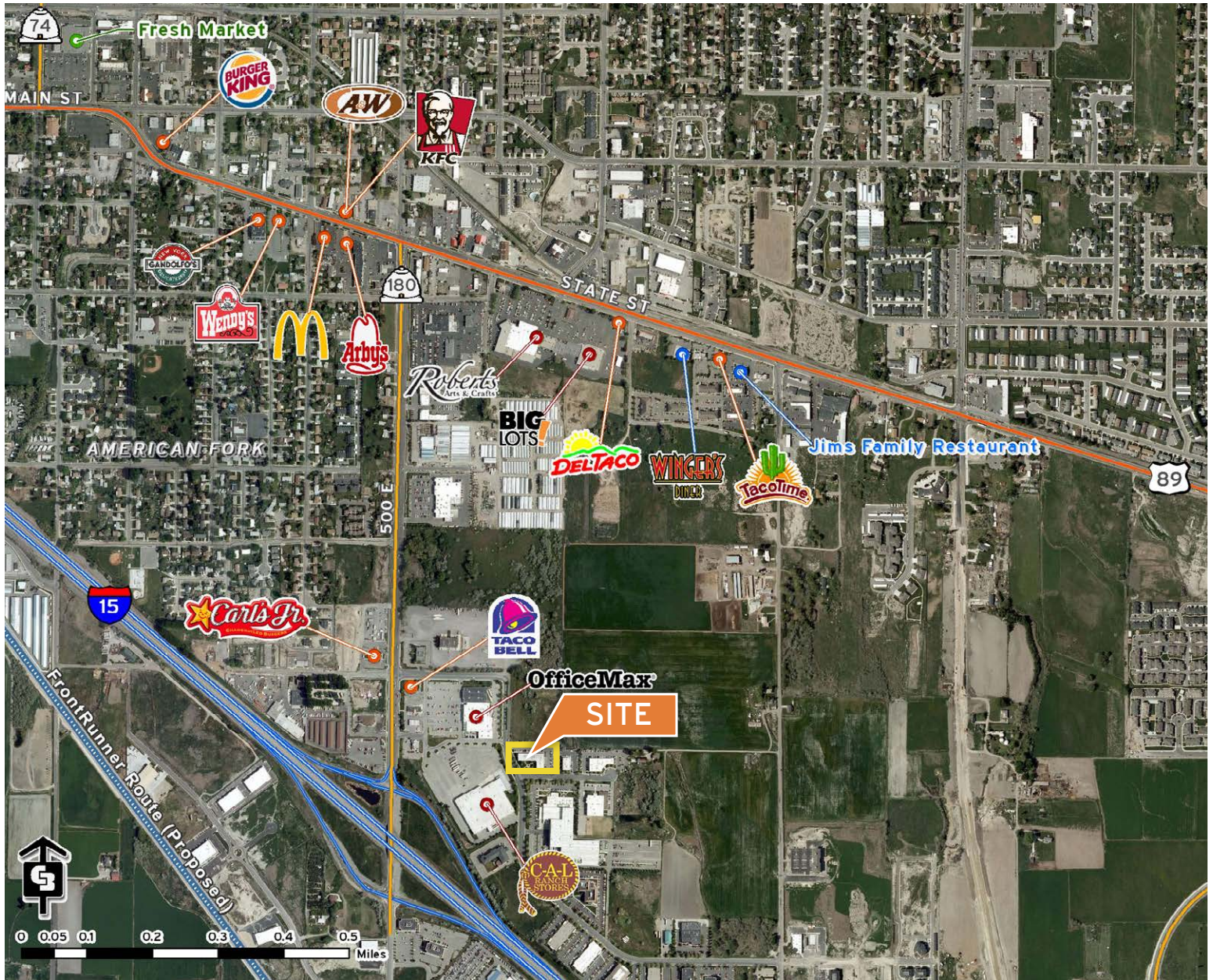
Cody Black

801.431.8280 office
801.687.0094 mobile
cody.black@coldwellutah.com

Shad Webb

801.431.8280 office
435.459.0212 mobile
shad.webb@coldwellutah.com





Cody Black

801.431.8280 office
801.687.0094 mobile
cody.black@coldwellutah.com

Shad Webb

801.431.8280 office
435.459.0212 mobile
shad.webb@coldwellutah.com

