

Ryszard SZADZIEWSKI

***Brachypogon (Isohelea) silecis*, a new species from Poland (Diptera, Ceratopogonidae)**

[With 7 text-figs.]

***Brachypogon (Isohelea) silecis*, nowy gatunek z Polski
(Diptera, Ceratopogonidae)**

Abstract. *Brachypogon (Isohelea) silecis* sp.n. from northern Poland is described and illustrated.

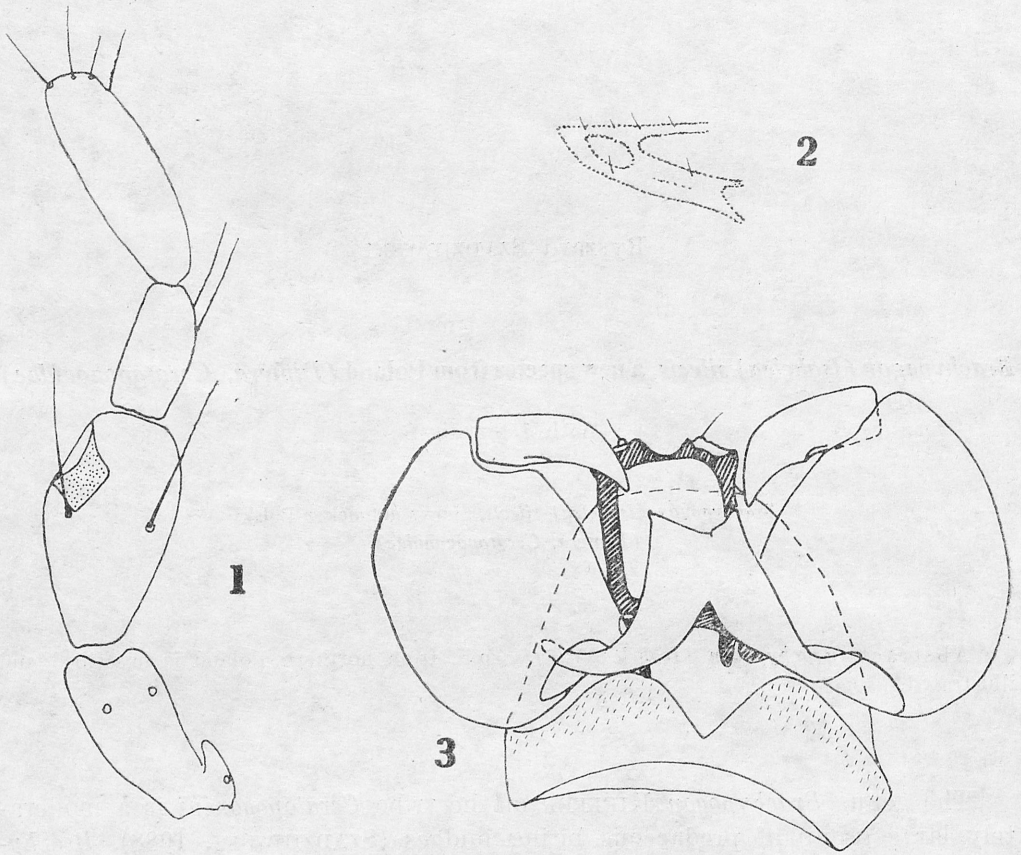
The genus *Brachypogon* KIEFFER of the tribe *Ceratopogonini* is a moderately large group of predaceous biting midges (SZADZIEWSKI, 1988). *Brachypogon silecis* sp. n. is the 43rd species of the subgenus *Isohelea* KIEFFER in the Palaearctic region (REMM, 1988). From Poland three species have only been recorded, i.e. *B.(I.) nitidulus* (EDWARDS), *B. (I.) perpusillus* (EDWARDS), and *B. (I.) sociabilis* (GOETGHEBUER) (KARL, 1940; SZADZIEWSKI, in press).

***Brachypogon (Isohelea) silecis* sp. n.**

Diagnosis. A small species known from the male only, distinguished by having short and stout gonostyli with sharply pointed and curved tip, distal projections of parameres not developed, and the aedeagus with broad concave apex.

Description. Male. Head brown. Eyes pubescent. Total length of flagellum 532 μ m. Plume well developed. First flagellomere with 4 sensilla coeloconica. Flagellomeres II—XI fused (fig. 4). Proboscis short. Palpus 5 segmented (fig. 1). Third palpal segment moderately swollen with distinct sensory pit, length 42 μ m. Fourth palpal segment bears 2 long setae, length 24 μ m. Fifth palpal segment as long as third one.

Thorax dark brown, almost black. Scutellum bears 2 lateral and 2 submedian

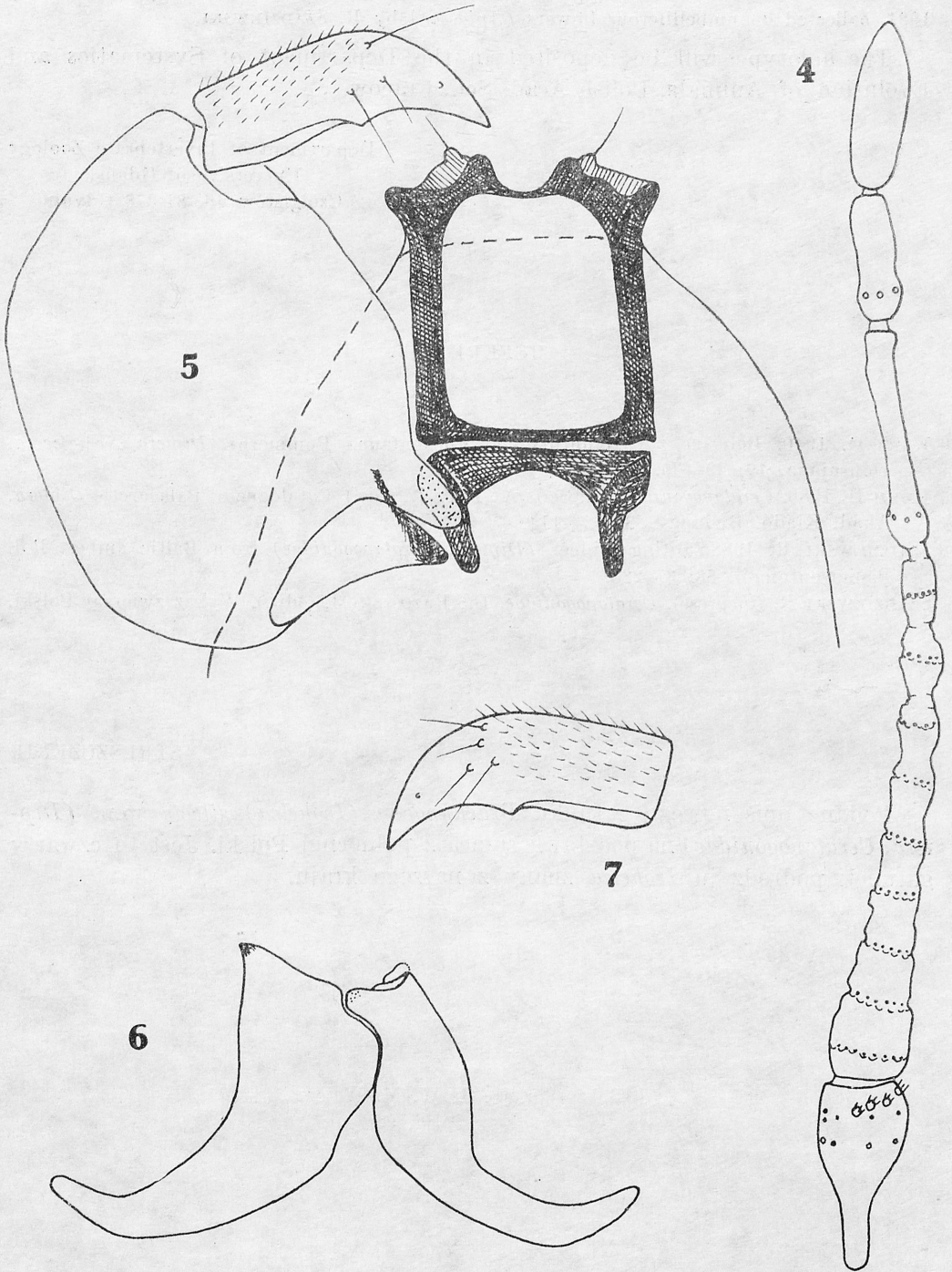


Figs. 1—3. *Brachypogon (Isohelea) silecis* sp.n., male; 1 — palpus, 2 — second radial cell, 3 — genitalia

long setae. Katepisternum with 2 setae. Legs brown, tarsi pale. Tibial comb composed of 7 spines. Hind basitarsus slightly swollen, with a single row of palisade setae. Fourth tarsomeres subcylindrical. Tarsal ratio of fore leg 1.3, of hind leg 1.6. Wing transparent, length 0.94 mm, costal ratio 0.50. Radial veins barely visible, probably only second radial cell well developed (fig. 2). Vein M_2 obsolete. Wing membrane without microtrichia and with a few macrotrichia along the wing margin in cell r_{4+5} . Halter pale.

Abdomen dark brown. Genitalia almost black (figs. 3, 5—7). Sternite IX short and broad, with deep V-shaped caudomedian excavation. Tergite IX long and broad, with a heavily sclerotized rectangular frame on its ventral surface. Cerci indistinct. Gonocoxite stout, almost as long as broad. Gonostylus short and stout, with abruptly pointed and curved tip. Aedeagus broad and relatively short, basal arms long, basal arch low. Tip of aedeagus broad and slightly concave. Only basal part of parameres connected by a distinct bridge well developed.

Female. — Unknown.



Figs. 4—7. *Brachypogon (Isohelea) silecis* sp.n., male; 4 — flagellum, 5 — right gonocoxite and gonostylus, tergite IX and parameres, 6 — aedeagus, 7 — left gonostylus

Material examined. Holotype, male — northern Poland, Silec near Kętrzyn, 23 July 1981, collected on umbelliferous flowers (*Apiaceae*) by R. SZADZIEWSKI.

The holotype will be deposited in the Department of Systematics and Evolution of Animals, Polish Acad. Sci., Cracow.

Department of Invertebrate Zoology
University of Gdańsk
Czołgistów 46, 81-378 Gdynia

REFERENCES

- KARL O. 1940. Beiträge zur Kenntnis der Mückenfauna Pommerns. *Diptera Nematocera*. Dohrniana, **19**: 29—36.
- REMM H. 1988. *Ceratopogonidae*, In: Soós A., PAPP L. (eds.), Catalogue of Palaearctic *Diptera*. Akad. Kiadó. Budapest, **3**: 12—114.
- SZADZIEWSKI R. 1988. Biting midges (*Diptera*, *Ceratopogonidae*) from Baltic amber. Pol. Pismo entomol., **58**: 3—283.
- SZADZIEWSKI R. (in press). *Ceratopogonidae*, In: RAZOWSKI J. (edit.), Wykaz zwierząt Polski.

STRESZCZENIE

Podano opis nowego gatunku *Brachypogon (Isohelea) silecis* sp.n. (*Diptera*, *Ceratopogonidae*) na podstawie samca z północnej Polski. Jest to czwarty gatunek podrodzaju *Isohelea* znany z naszego kraju.

Redaktor pracy: dr W. M. Weiner