

## Mammals, Amphibians and Reptiles

### A Unique Assemblage

The isolated Olympic Peninsula harbors a unique community of wildlife, noteworthy not only for endemic animals (found only here), but also for species missing from the Olympics, yet found elsewhere in western mountains. Pika, ptarmigan, ground squirrels, lynx, wolverine, grizzly bears, bighorn and historically, mountain goats did not occur on the Olympic Peninsula. While unique species like the Olympic marmot, Olympic snow mole and Olympic torrent salamander are found here and nowhere else in the world! Unfortunately, like most places in the world, non-native species introduced by humans have also spread to the park. Wildlife listed below have been observed in Olympic National Park. A more detailed checklist with birds, fish and information on habitat and seasonal abundance is sold at the Olympic National Park Visitor Center in Port Angeles (360) 565-3130.

A=Abundant C=Common CL=Common locally U=Uncommon UL=Uncommon locally R=Rare \*\* Endemic

### Mammals

Masked shrew, *Sorex cinereus* - R  
Trowbridge's shrew, *Sorex trowbridgei* - C  
Vagrant shrew, *Sorex vagrans* - C  
Montane shrew, *Sorex monticolus* - C  
Pacific marsh shrew, *Sorex bendirii* - C  
Northern water shrew, *Sorex palustris* - U  
Shrew-mole, *Neurotrichus gibbsii* - CL  
Townsend's mole, *Scapanus townsendii* - A  
Snow mole, *S. townsendii olympicus* - UL\*\*  
Coast mole, *Scapanus orarius* - C  
Little brown myotis, *Myotis lucifugus* - U  
Yuma myotis, *Myotis yumanensis* - C  
Keen's myotis, *Myotis keenii* - R  
Long-eared myotis, *Myotis evotis* - R  
California myotis, *Myotis californicus* - U  
Long-legged myotis, *Myotis volans* - R  
Fringed myotis, *Myotis thysanodes* - U

Big brown bat, *Eptesicus fuscus* - U  
Silver-haired bat, *Lasionycteris noctivagans* - U  
Hoary bat, *Lasiurus cinereus* - U  
Townsend's big-eared bat, *Corynorhinus townsendii* - R  
Snowshoe hare, *Lepus americanus* - C  
Virginia opossum, *Didelphis virginiana* - Encroaching  
Mountain beaver, *Aplodontia rufa* - C  
Douglas squirrel, *Tamiasciurus douglasii* - C  
Northern flying squirrel, *Glaucomys sabrinus* - C  
Townsend's chipmunk, *Tamias townsendii* - C  
Olympic chipmunk, *Tamias amoenus caurinus* - CL\*\*  
Beaver, *Castor canadensis* - CL  
Muskrat, *Ondatra zibethicus* - CL  
Olympic marmot, *Marmota olympus* - CL\*\*  
Mazama pocket gopher, *T. mazama melanops* - U\*\*  
Keen's mouse, *Peromyscus keeni* - C  
Deer mouse, *Peromyscus maniculatus* - A  
Bushy-tailed woodrat, *Neotoma cinerea* - CL  
Heather vole, *Phenacomys intermedius* - CL  
Southern red-backed vole, *Clethrionomys gapperi* - C  
Townsend's vole, *Microtus townsendii* - C  
Long-tailed vole, *Microtus longicaudus* - U  
Creeping vole, *Microtus oregoni* - CL  
Pacific jumping mouse, *Zapus trinotatus* - C  
Black rat, *Rattus rattus* - CL (introduced)  
Norway rat, *Rattus norvegicus* - CL (introduced)  
Coyote, *Canis latrans* - C  
Wolf, *Canis lupus* - Extirpated  
Red fox, *Vulpes fulva* - R (introduced)

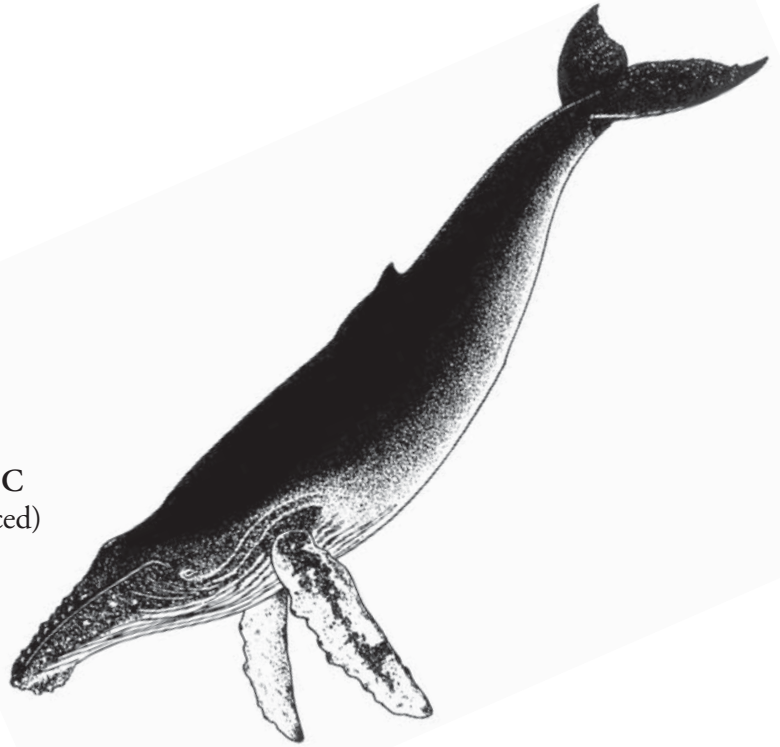


Striped skunk



## Mammals (continued)

Black bear, *Ursus americanus* - C  
Raccoon, *Procyon lotor* - C  
Marten, *Martes americana* - R  
Fisher, *Martes pennanti* - R (reintroduced 2008)  
Short-tailed weasel, *Mustela erminea olympica* - C\*\*  
Long-tailed weasel, *Mustela frenata* - C  
Mink, *Mustela vison* - C  
River otter, *Lutra canadensis* - C  
Porcupine, *Erethizon dorsatum* - R  
Spotted skunk, *Spilogale gracilis* - C  
Striped skunk, *Mephitis mephitis* - CL  
Cougar, *Puma concolor* - C  
Bobcat, *Lynx rufus* - C  
Roosevelt elk, *Cervus elaphus roosevelti* - C  
Black-tailed deer, *Odocoileus hemionus columbianus* - C  
Mountain goat, *Oreamnos americanus* - CL (introduced)  
Pig, *Sus scrofa* - U (introduced)



## Marine Mammals (nearshore)

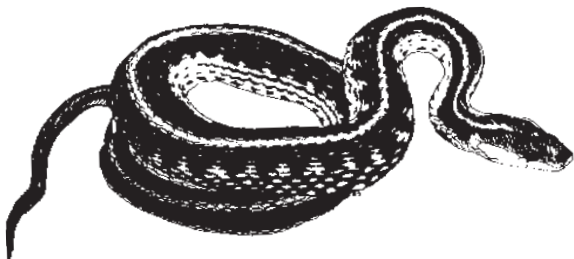
Sea otter, *Enhydra lutris* - CL  
River otter, *Lutra canadensis* - C (rocky intertidal)  
Harbor seal, *Phoca vitulina* - A  
Northern Fur Seal, *Callorhinus ursinus* - Occasional  
Steller sea lion, *Eumetopias jubatus* - U  
California sea lion, *Zalophus californianus* - U  
Northern elephant seal, *Mirounga angustirostris* - R  
Gray whale, *Eschrichtius robustus* - C (spring and fall)  
Minke whale, *Balaenoptera acutorostrata* - U (summer and fall)  
Humpback whale, *Megaptera novaeangliae* - U (fall)  
Harbor porpoise, *Phocoena phocoena* - CL (summer)  
Orca or Killer whale, *Orcinus orca* - U (summer and fall)  
Dall's porpoise, *Phocoenoides dalli* - U  
Pacific white-sided dolphin, *Lagenorhynchus obliquidens* - U

Humpback whale

## Amphibians and Reptiles

Northwestern salamander, *Ambystoma gracile*  
Long-toed salamander, *Ambystoma macrodactylum*  
Olympic torrent salamander, *Rhyacotriton olympicus*\*\*  
Cope's giant salamander, *Dicamptodon copei*  
Rough-skinned newt, *Taricha granulosa*

Oregon ensatina, *Ensatina eschscholtzi*  
Western red backed salamander, *Plethodon vehiculum*  
Van Dyke's salamander, *Phethdon vandykei*  
Western toad, *Bufo boreas*  
Tailed frog, *Ascaphus truei*  
Red-legged frog, *Rana aurora*  
Pacific tree frog, *Pseudacris regilla*  
Cascades frog, *Rana cascadae*  
Northern alligator lizard, *Elgaria coerulea*  
Rubber boa, *Charina bottae*  
Common garter snake, *Thamnophis sirtalis*  
Northwestern garter snake, *Thamnophis ordinoides*



Garter snake