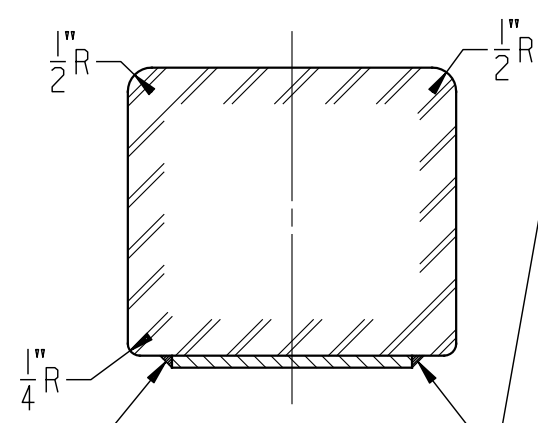
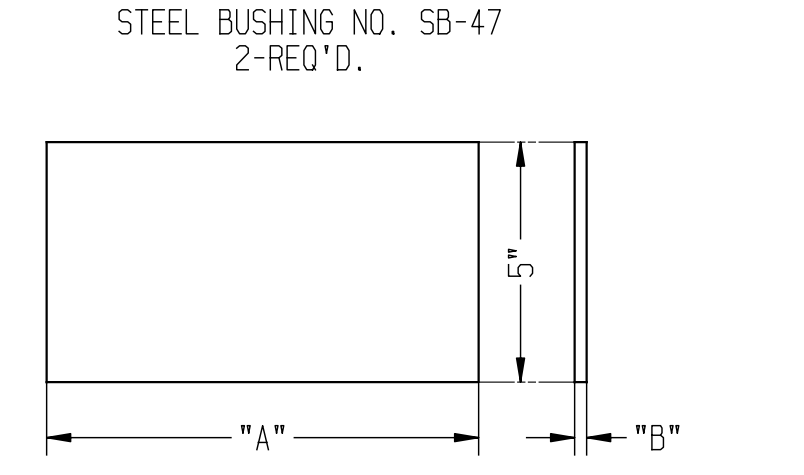
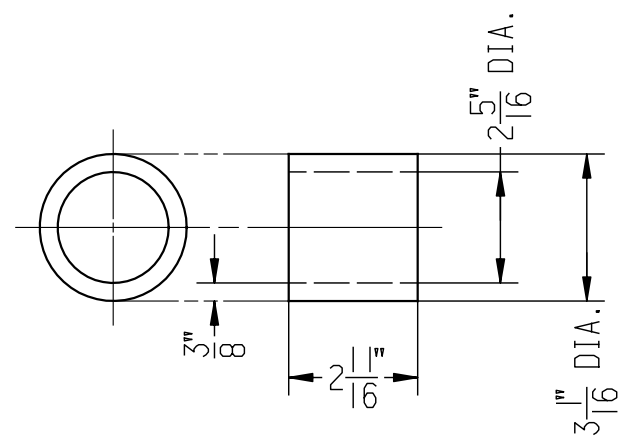


WEAR PLATE APPLIED BY INTERMITTENT WELDING ALONG LONGITUDINAL EDGES ONLY. NO TRANSVERSE WELDING PERMITTED ON SHANK AT EITHER END OF PLATE.



SECTION A-B

SHARP CORNERS AND BURRS ARE TO BE REMOVED FROM THE BOTTOM EDGES OF THE WEAR PLATE BY GRINDING.



PARTS ARE INSIDE HEAD AND NOT SHOWN

COUPLER WEAR PLATE 341-415 BHN.
(FURNISHED AS SPECIFIED ON ORDER AND APPLIED BY C.S.C.)

LINE NO.	C.S.C. COMPLETE ASSEMBLY IDENT. NO.	WEAR PLATE			
		PLATE NO.	PLATE DRG.	DIM. "A"	DIM. "B"
1	SH-7-HT1	WP2	B-10719	8"	1/4"
2	SH-7-HT9		B-14729	9"	1/4"
3	SH-7-HT4		B-14867	8"	3/8"

COUPLER IS FITTED WITH THE FOLLOWING PARTS.

- ① - KNUCKLE H 50 B-HTS *
- ② - LOCK H 40 A-HTS *
- ③ - KNUCKLE THROWER H 30 A
- ④ - PIVOT PIN C 10
- ⑤ - PIVOT PIN COTTER C 11
- ⑥ - SUPPORT PIN C 2
- ⑦ - SUPPORT PIN COTTER C 3
- ⑧ - LOCK LIFT LEVER BS 13-HT
- ⑨ - LOCK LIFT TOGGLE H 9 A
- ⑩ - RIVET E 5

LOCK LIFT ASSEMBLY BS-15

NOTE: LOCK LIFT ASSEMBLY FURNISHED IN ASSEMBLY ONLY.
* KNUCKLE AND LOCK FURNISHED IN GRADE "C" HIGH TENSILE STEEL, QUENCHED AND TEMPERED (HTS), TO A.A.R. SPECIFICATION M-206, LATEST REVISION.

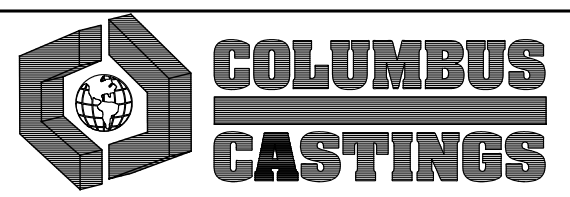
6" X 8" X 22 1/2" SHANK WITH 2 5/16" PIN HOLE BUSHED.

COUPLER BODY HIGH TENSILE STEEL GRADE "C", NORMALIZED AND TEMPERED (HT), TO A.A.R. SPECIFICATION M-206, LATEST REVISION. PATTERN NO. SH-7-HT

NOTE: COUPLER AND PARTS ARE PATENTED.

REV.	DATE

TYPE "H" TIGHTLOCK COUPLER
SINGLE ROTARY OPERATION
PATTERN NO. SH-7-HT



Columbus, Ohio

DRAWN BY J.M.P	CHECKED BY J.W.	DATE 9-1-1983
SCALE 3"=1'-0"		

CW-13108

THIS DRAWING CONTAINS CONFIDENTIAL AND PROPRIETARY INFORMATION OF COLUMBUS CASTINGS AND THE DRAWING AND THE INFORMATION CONTAINED THEREIN ARE AND REMAIN THE PROPERTY OF COLUMBUS CASTINGS. THIS DRAWING IS PROVIDED WITH THE EXPRESS AGREEMENT THAT THE DRAWING AND THE INFORMATION THEREIN:

- (1) WILL NOT BE REPRODUCED, COPIED OR OTHERWISE TRANSCRIBED, IN WHOLE OR IN PART, BY ANY METHOD;
- (2) WILL NOT BE USED, IN WHOLE OR IN PART, DIRECTLY OR INDIRECTLY, TO ASSIST IN THE MAKING OR TO FURNISH ANY INFORMATION FOR THE MAKING, OF DRAWINGS, PRINTS, APPARATUS OR PARTS;
- (3) WILL NOT BE MADE AVAILABLE TO ANY OTHER PERSON OR ENTITY, IN EACH CASE WITHOUT THE PRIOR WRITTEN CONSENT OF COLUMBUS CASTINGS AS TO EACH SPECIFIC CASE; AND
- (4) WILL BE RETURNED TO COLUMBUS CASTINGS UPON ITS REQUEST.

ACCEPTANCE OF THIS DRAWING SHALL CONSTITUTE ACCEPTANCE OF THE FOREGOING AGREEMENTS.