



# BURA

Pattern Written by Nancy Rieck



## MEASUREMENTS

Sm/Med 34-40 Med/Lg 46-52 inches in body circumference

**Pattern Note:** Because of the use of large needles with light yarn this garment fits a range of sizes.

## MATERIALS

1008(1520) yards, Feza Yarns, Viva Glitz (4/6 skeins)

Size needles 10 U.S./6 mm, plus circular or DPN's for neck rib.

Notions Required: Cable needle, tapestry needle.

## GAUGE

23 sts x 16 Rows = 4 inches in pattern stitch on size 10 U.S./6 mm

Adjust needle size if necessary to obtain the correct gauge.

## SPECIAL ABBREVIATIONS

**C8B:** Cable 8 Back - slip 4 sts to cn, k4, k4 from cn, **CN:** Cable needle.

Repeat patterns in between \*\*

Med/Lg only - repeat instructions once between [ ]

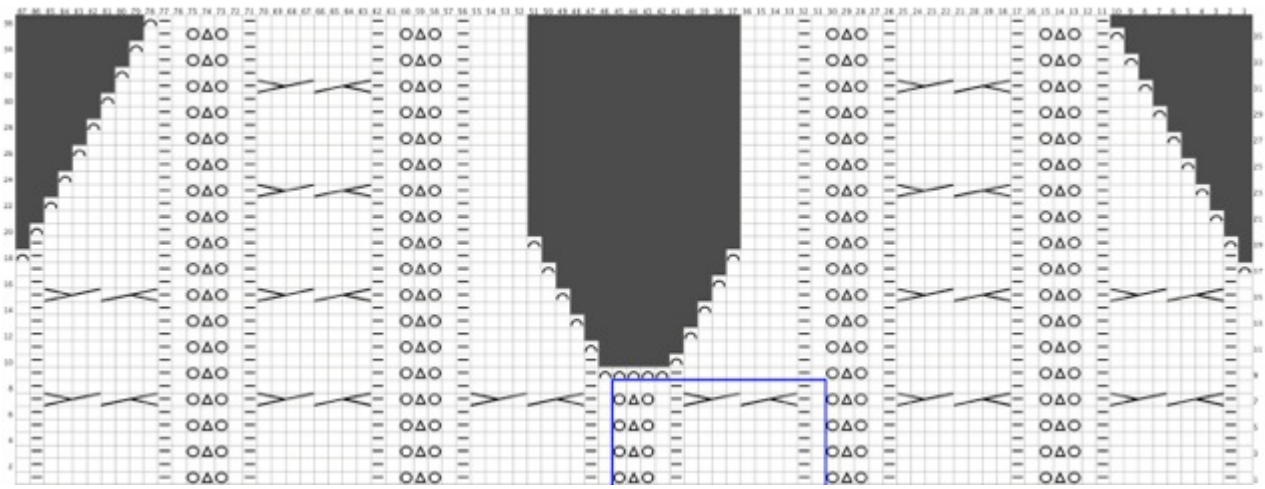
## PATTERN STITCH

(Multiples of 15 sts + 12)




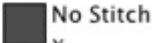



**Rows 1, 3, and 5 (RS):** \*K1, p1, k8, p1, yo, sl1, k2tog, pssso, yo,\* k1, p1, k8, p1, k1.

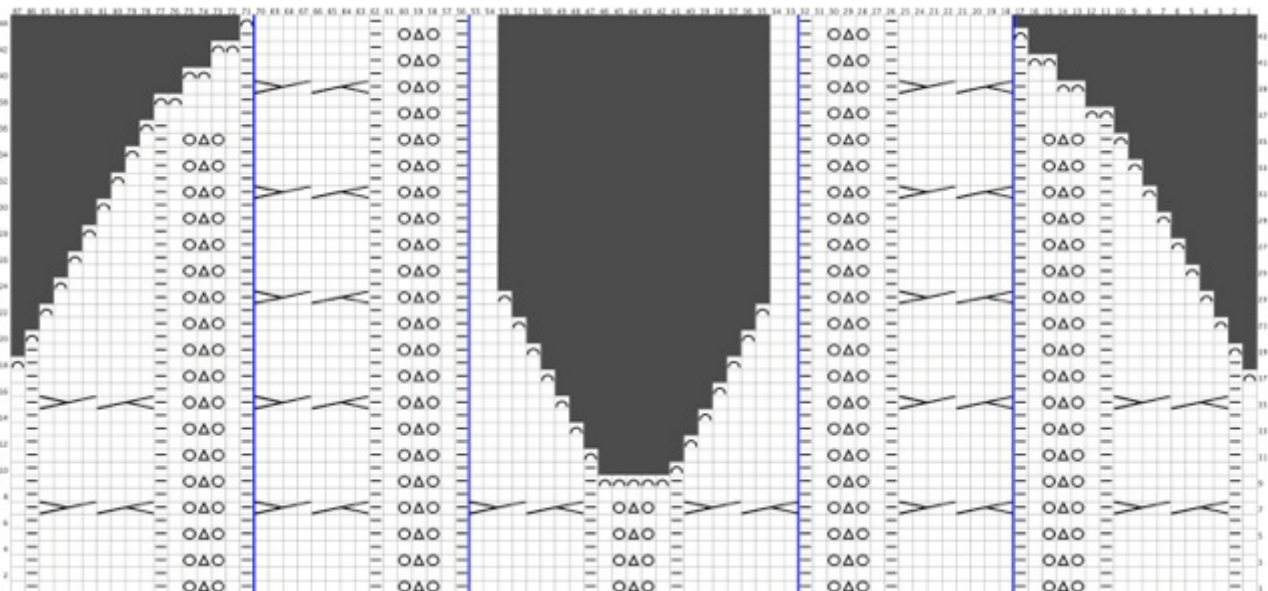
**Rows 2, 4, 6 and 8:** P1, k1, p8, \*k1, p5, k1, p8, k1, p1, \*.

**Row 7:** \*K1, p1, C8B, p1, yo, sl1, k2tog, pssso, yo,\* k1, p1, C8B, p1, k1.



Sm/Med Bura Front  
Pattern Stitch Repeat shown in blue box

Key:	
 Bind Off bind (RS) Bind Off (WS) Bind Off	 slk2togpsso sk2 (RS) Sl 1, k2tog, pass sl st over (WS) Knit
 Cable 8 Back c8b (RS) Sl 4 to back, k4, k4 sts from cn (WS) Sl 4 to front, p4, p4 sts from cn	 No Stitch x (RS) No Stitch (WS) No Stitch
 Knit k (RS) Knit (WS) Purl	 Yarn Over yo (RS) Yarn Over (WS) Yarn Over
 Purl p (RS) Purl (WS) Knit	



Med/Lg Bura Front  
Pattern Stitch Repeats shown in between blue lines  
See Written instructions for clarification

## PATTERN

### Pattern Note:

Med/Lg only - repeat once instructions between [ ].

### BACK

CO 87(117) sts.

Work pattern sts for 15(17) repeats.

BO all sts loosely knitwise.

Secure yarn.

### FRONT

CO 87(117) sts.

Work pattern sts for 11(12) repeats.



### Separating Sides for V-Front

**Pattern Note:** Bind off knitwise on RS and purlwise on WS.

Row numbers will now follow the Front Chart.

**Row 9(RS):** K1, p1, k8, p1, k1, yo, sk2, yo, k1, p1, [k8, p1, k1, yo, sk2, yo, k1, p1], k8, p1, BO5, p1, k8, [p1, k1, yo, sk2, yo, k1, p1, k8], p1, k1, yo, sk2, yo, k1, p1, k8, p1, k1.

At bind off area at middle of next row, add new yarn for second side.

Work both sides at same time with separate yarn.

**Row 10:** P1, k1, p8, k1, p5, k1, [p8, k1, p5, k1], p8, k1, next side, BO1, p8, [k1, p5, k1, p8], k1, p5, k1, p8, k1, p1.

**Row 11:** K1, p1, k8, p1, k1, yo, sk2, yo, k1, p1, [k8, p1, k1, yo, sk2, yo, k1, p1], k8, next side, BO1, k8, [p1, k1, yo, sk2, yo, k1, p1, k8], p1, k1, yo, sk2, yo, k1, p1, k8, p1, k1.

**Row 12:** P1, k1, p8, k1, p5, k1, [p8, k1, p5, k1], p8, next side, BO1, p7, [k1, p5, k1, p8], k1, p5, k1, p8, k1, p1.

**Row 13:** K1, p1, k8, p1, k1, yo, sk2, yo, k1, p1, [k8, p1, k1, yo, sk2, yo, k1, p1], k7, next side, BO1, k7, [p1, k1, yo, sk2, yo, k1, p1, k8], p1, k1, yo, sk2, yo, k1, p1, k8, p1, k1.

**Row 14:** P1, k1, p8, k1, p5, k1, [p8, k1, p5, k1], p7, next side, BO1, p6, [k1, p5, k1, p8], k1, p5, k1, p8, k1, p1.

**Row 15:** K1, p1, c8b, p1, k1, yo, sk2, yo, k1, p1, [c8b, p1, k1, yo, sk2, yo, k1, p1], k6, next side, BO1, k6, [p1, k1, yo, sk2, yo, k1, p1, c8b], p1, k1, yo, sk2, yo, k1, p1, c8b, p1, k1.

**Row 16:** P1, k1, p8, k1, p5, k1, [p8, k1, p5, k1], p6, BO1, p5, [k1, p5, k1, p8], k1, p5, k1, p8, k1, p1.

### Start of outside Bind Offs

**Row 17:** BO1, p1, k8, p1, k1, yo, sk2, yo, k1, p1, [k8, p1, k1, yo, sk2, yo, k1, p1], k5, next side, BO1, k5, [p1, k1, yo, sk2, yo, k1, p1, k8], p1, k1, yo, sk2, yo, k1, p1, k8, p1, k1.

**Row 18:** BO1, k1, p8, k1, p5, k1, [p8, k1, p5, k1], p5, next side, BO1, p4, [k1, p5, k1, p8], k1, p5, k1, p8, k1.

**Row 19:** BO1, k8, p1, k1, yo, sk2, yo, k1, p1, [k8, p1, k1, yo, sk2, yo, k1, p1], k4, next side, BO1, k4, [p1, k1, yo, sk2, yo, k1, p1, k8], p1, k1, yo, sk2, yo, k1, p1, k8, p1.

### Sm/Med

**Row 20:** BO1, p8, k1, p5, k1, p8, k1, p5, k1, p4, next side, p4, k1, p5, k1, p8, k1, p5, k1, p8.

**Row 21:** BO1, k7, p1, k1, yo, sk2, yo, k1, p1, k8, p1, k1, yo, sk2, yo, k1, p1, k4, next side, k4, p1, k1, yo, sk2, yo, k1, p1, k8, p1, k1, yo, sk2, yo, k1, p1, k8.

**Row 22:** BO1, p7, k1, p5, k1, p8, k1, p5, k1, p4, next side, p4, k1, p5, k1, p8, k1, p5, k1, p7.

**Row 23:** x3, bind, k6, p1, k1, yo, sk2, yo, k1, p1, c8b, p1, k1, yo, sk2, yo, k1, p1, k4, next side, k4, p1, k1, yo, sk2, yo, k1, p1, c8b, p1, k1, yo, sk2, yo, k1, p1, k7.

**Row 24:** BO1, p6, k1, p5, k1, p8, k1, p5, k1, p4, next side, p4, k1, p5, k1, p8, k1, p5, k1, p6.

**Row 25:** BO1, k5, p1, k1, yo, sk2, yo, k1, p1, k8, p1, k1, yo, sk2, yo, k1, p1, k4, next side, k4, p1, k1, yo, sk2, yo, k1, p1, k8, p1, k1, yo, sk2, yo, k1, p1, k6.

**Row 26:** BO1, p5, k1, p5, k1, p8, k1, p5, k1, p4, next side, p4, k1, p5, k1, p8, k1, p5, k1, p5.

**Row 27:** BO1, k4, p1, k1, yo, sk2, yo, k1, p1, k8, p1, k1, yo, sk2, yo, k1, p1, k4, next side, k4, p1, k1, yo, sk2, yo, k1, p1, k8, p1, k1, yo, sk2, yo, k1, p1, k5.

**Row 28:** BO1, p4, k1, p5, k1, p8, k1, p5, k1, p4, next side, p4, k1, p5, k1, p8, k1, p5, k1, p4.

**Row 29:** BO1, k3, p1, k1, yo, sk2, yo, k1, p1, k8, p1, k1, yo, sk2, yo, k1, p1, k4, next side, k4, p1, k1, yo, sk2, yo, k1, p1, k8, p1, k1, yo, sk2, yo, k1, p1, k4

**Row 30:** BO1, p3, k1, p5, k1, p8, k1, p5, k1, p4, next side, p4, k1, p5, k1, p8, k1, p5, k1, p3.

**Row 31:** BO1, k2, p1, k1, yo, sk2, yo, k1, p1, c8b, p1, k1, yo, sk2, yo, k1, p1, k4, next side, k4, p1, k1, yo, sk2, yo, k1, p1, c8b, p1, k1, yo, sk2, yo, k1, p1, k3.

**Row 32:** BO1, p2, k1, p5, k1, p8, k1, p5, k1, p4, next side, p4, k1, p5, k1, p8, k1, p5, k1, p2.

**Row 33:** BO1, k1, p1, k1, yo, sk2, yo, k1, p1, k8, p1, k1, yo, sk2, yo, k1, p1, k4, next side, k4, p1, k1, yo, sk2, yo, k1, p1, k8, p1, k1, yo, sk2, yo, k1, p1, k2.

**Row 34:** BO1, p1, k1, p5, k1, p8, k1, p5, k1, p4, next side, p4, k1, p5, k1, p8, k1, p5, k1, p1.

**Row 35:** BO1, p1, k1, yo, sk2, yo, k1, p1, k8, p1, k1, yo, sk2, yo, k1, p1, k4, next side, k4, p1, k1, yo, sk2, yo, k1, p1, k8, p1, k1, yo, sk2, yo, k1, p1, k1.

**Row 36:** BO1, k1, p5, k1, p8, k1, p5, k1, p4, next side, p4, k1, p5, k1, p8, k1, p5, k1.

BO all sts knitwise.

Secure yarn.

## Med/Lg

**Row 20:** BO1, p8, k1, p5, k1, [p8, k1, p5, k1], p4, next side, BO1, p3, [k1, p5, k1, p8], k1, p5, k1, p8.

**Row 21:** BO1, k7, p1, k1, yo, sk2, yo, k1, p1, [k8, p1, k1, yo, sk2, yo, k1, p1], k3, next side, BO1, k3, [p1, k1, yo, sk2, yo, k1, p1, k8], p1, k1, yo, sk2, yo, k1, p1, k8.

**Row 22:** BO1, p7, k1, p5, k1, [p8, k1, p5, k1], p3, next side, BO1, p2, k1, p5, k1, p8, k1, p5, k1, p7.

**Row 23:** BO1, k6, p1, k1, yo, sk2, yo, k1, p1, [c8b, p1, k1, yo, sk2, yo, k1, p1], k2, next side, BO1, k2, [p1, k1, yo, sk2, yo, k1, p1, c8b], p1, k1, yo, sk2, yo, k1, p1, k7.

**Row 24:** BO1, p6, k1, p5, k1, [p8, k1, p5, k1], p2, next side, p2, [k1, p5, k1, p8], k1, p5, k1, p6.

**Row 25:** BO1, k5, p1, k1, yo, sk2, yo, k1, p1, [k8, p1, k1, yo, sk2, yo, k1, p1], k2, next side, k2, [p1, k1, yo, sk2, yo, k1, p1, k8], p1, k1, yo, sk2, yo, k1, p1, k6.

**Row 26:** BO1, p5, k1, p5, k1, [p8, k1, p5, k1], p2, next side, p2, [k1, p5, k1, p8], k1, p5, k1, p5.

**Row 27:** BO1, k4, p1, k1, yo, sk2, yo, k1, p1, [k8, p1, k1, yo, sk2, yo, k1, p1], k2, next side, k2, [p1, k1, yo, sk2, yo, k1, p1, k8], p1, k1, yo, sk2, yo, k1, p1, k5.

**Row 28:** BO1, p4, k1, p5, k1, [p8, k1, p5, k1], p2, next side, p2, [k1, p5, k1, p8], k1, p5, k1, p4.

**Row 29:** BO1, k3, p1, k1, yo, sk2, yo, k1, p1, [k8, p1, k1, yo, sk2, yo, k1, p1], k2, next side, k2, [p1, k1, yo, sk2, yo, k1, p1, k8], p1, k1, yo, sk2, yo, k1, p1, k4.

**Row 30:** BO1, p3, k1, p5, k1, [p8, k1, p5, k1], p2, next side, p2, [k1, p5, k1, p8], k1, p5, k1, p3.

**Row 31:** BO1, k2, p1, k1, yo, sk2, yo, k1, p1, [c8b, p1, k1, yo, sk2, yo, k1, p1], k2, next side, k2, [p1, k1, yo, sk2, yo, k1, p1, c8b], p1, k1, yo, sk2, yo, k1, p1, k3.

**Row 32:** BO1, p2, k1, p5, k1, [p8, k1, p5, k1], p2, next side, p2, [k1, p5, k1, p8], k1, p5, k1, p2.

**Row 33:** BO1, k1, p1, k1, yo, sk2, yo, k1, p1, [k8, p1, k1, yo, sk2, yo, k1, p1], k2, next side, k2, [p1, k1, yo, sk2, yo, k1, p1, k8], p1, k1, yo, sk2, yo, k1, p1, k2.

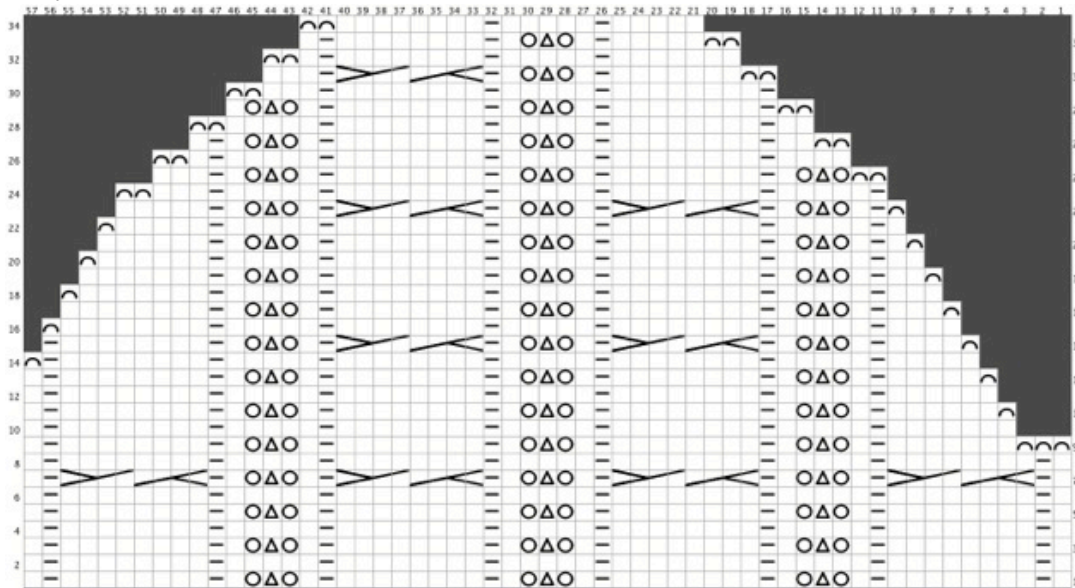
**Row 34:** BO1, p1, k1, p5, k1, [p8, k1, p5, k1], p2, next side, p2, [k1, p5, k1, p8], k1, p5, k1, p1.

**Row 35:** BO1, p1, k1, yo, sk2, yo, k1, p1, [k8, p1, k1, yo, sk2, yo, k1, p1], k2, next side, k2, [p1, k1, yo, sk2, yo, k1, p1, k8], p1, k1, yo, sk2, yo, k1, p1, k1.

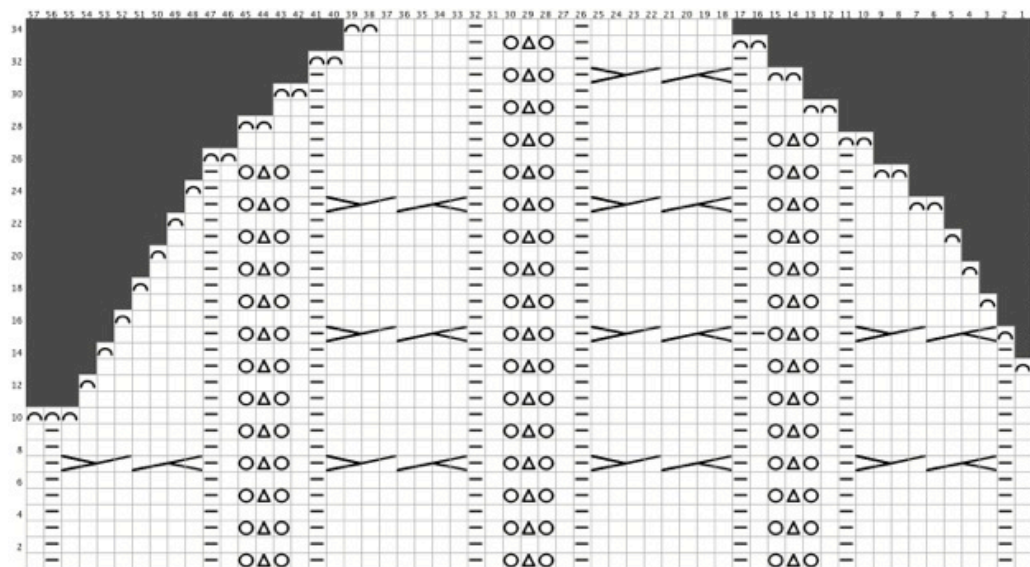
**Row 36:** BO1, k1, p5, k1, [p8, k1, p5, k1], p2, next side, p2, [k1, p5, k1, p8], k1, p5, k1.

- Row 37:** BO2, k4, p1, [k8, p1, k1, yo, sk2, yo, k1, p1], k2, next side, k2, [p1, k1, yo, sk2, yo, k1, p1, k8], p1, k6.
- Row 38:** BO2, p4, k1, [p8, k1, p5, k1], p2, next side, p2, [k1, p5, k1, p8], k1, p4.
- Row 39:** BO2, k2, p1, [c8b, p1, k1, yo, sk2, yo, k1, p1], k2, next side, k2, [p1, k1, yo, sk2, yo, k1, p1, c8b], p1, k4.
- Row 40:** BO2, p2, k1, [p8, k1, p5, k1], p2, next side, p2, [k1, p5, k1, p8], k1, p2.
- Row 41:** BO2, p1, [k8, p1, k1, yo, sk2, yo, k1, p1], k2, next side, k2, [p1, k1, yo, sk2, yo, k1, p1, k8], p1, k2.
- Row 42:** BO2, k1, [p8, k1, p5, k1], p2, next side, p2, [k1, p5, k1, p8], k1.
- Row 43:** BO1, [k8, p1, k1, yo, sk2, yo, k1, p1], k2, next side, k2, [p1, k1, yo, sk2, yo, k1, p1, k8], p1.
- Row 44:** BO1, [p8, k1, p5, k1], p2, next side, p2, [k1, p5, k1, p8].

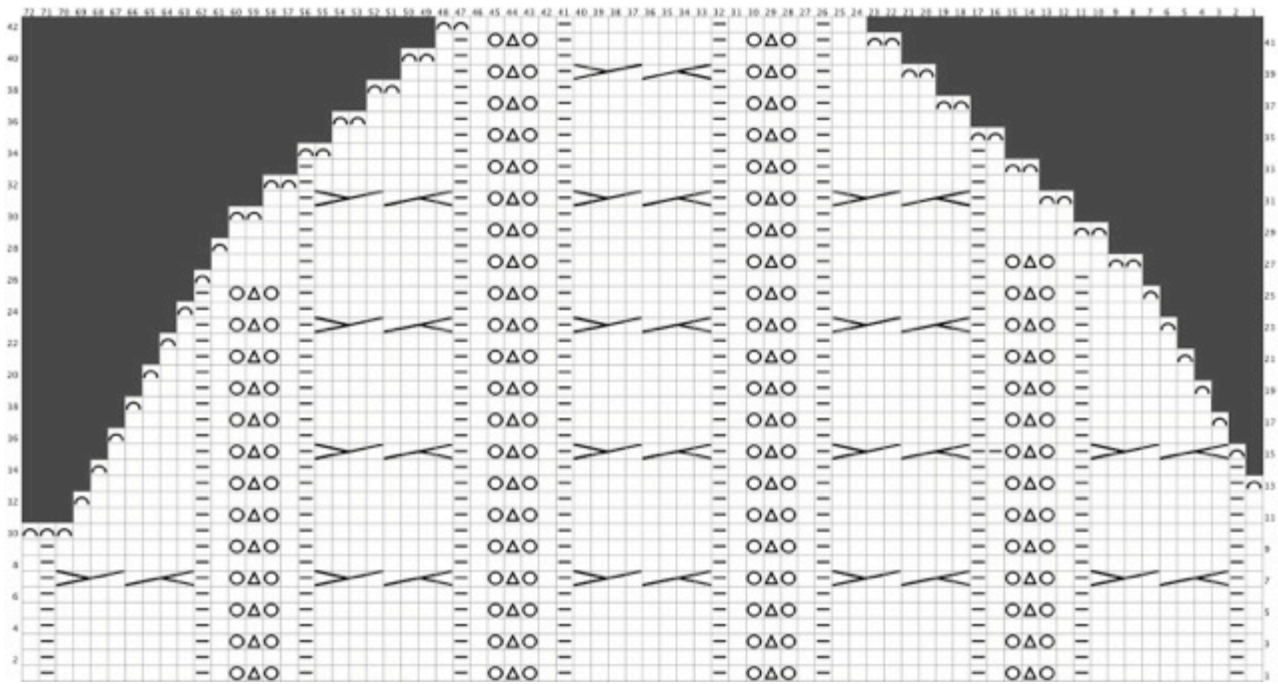
BO all sts knitwise.  
Secure yarn.



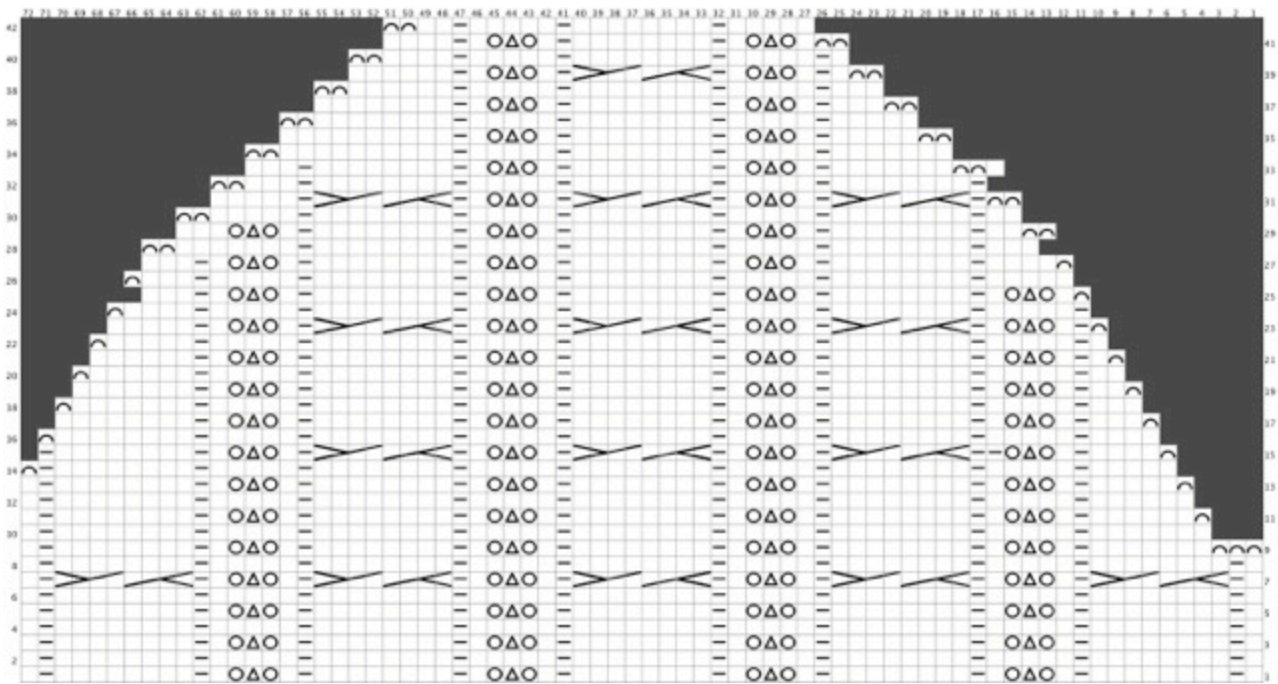
Sm/Med Left Wearing Sleeve



Sm/Med Right Wearing Sleeve



Med/Lg Right Wearing Sleeve



Med/Lg Left Wearing Sleeve

## SLEEVES

### Left Wearing

CO 57(72) sts.

Work pattern sts for 9(10) repeats. (see chart Rows 1-8)

Written instructions start on Row 9 of Chart for shapping.

### Sm/Med

**Row 9:** BO3, k7, p1, k1, yo, sk2, yo, k1, p1, k8, p1, k1, yo, sk2, yo, k1, p1, k8, p1, k1, yo, sk2, yo, k1, p1, k8, p1, k1.

**Row 10:** P1, k1, p8, k1, p5, k1, p8, k1, p5, k1, p8, k1, p5, k1, p7.

**Row 11:** BO1, k6, p1, k1, yo, sk2, yo, k1, p1, k8, p1, k1, yo, sk2, yo, k1, p1, k8, p1, k1, yo, sk2, yo, k1, p1, k8, p1, k1.

**Row 12:** P1, k1, p8, k1, p5, k1, p8, k1, p5, k1, p8, k1, p5, k1, p6.

**Row 13:** BO1, k5, p1, k1, yo, sk2, yo, k1, p1, k8, p1, k1, yo, sk2, yo, k1, p1, k8, p1, k1, yo, sk2, yo, k1, p1, k8, p1, k1.

**Row 14:** BO1, k1, p8, k1, p5, k1, p8, k1, p5, k1, p8, k1, p5, k1, p5.

**Row 15:** BO1 k4, p1, k1, yo, sk2, yo, p2, c8b, p1, k1, yo, sk2, yo, k1, p1, c8b, p1, k1, yo, sk2, yo, k1, p1, k8, p1.

**Row 16:** BO1, p8, k1, p5, k1, p8, k1, p5, k1, p8, k1, p5, k1, p4.

**Row 17:** BO1, k3, p1, k1, yo, sk2, yo, k1, p1, k8, p1, k1, yo, sk2, yo, k1, p1, k8, p1, k1, yo, sk2, yo, k1, p1, k8.

**Row 18:** BO1, p7, k1, p5, k1, p8, k1, p5, k1, p8, k1, p5, k1, p3.

**Row 19:** BO1, k2, p1, k1, yo, sk2, yo, k1, p1, k8, p1, k1, yo, sk2, yo, k1, p1, k8, p1, k1, yo, sk2, yo, k1, p1, k7.

**Row 20:** BO1, p6, k1, p5, k1, p8, k1, p5, k1, p8, k1, p5, k1, p2.

**Row 21:** BO1, k1, p1, k1, yo, sk2, yo, k1, p1, k8, p1, k1, yo, sk2, yo, k1, p1, k8, p1, k1, yo, sk2, yo, k1, p1, k6.

**Row 22:** BO1, p5, k1, p5, k1, p8, k1, p5, k1, p8, k1, p5, k1, p1.

**Row 23:** BO1, p1, k1, yo, sk2, yo, k1, p1, c8b, p1, k1, yo, sk2, yo, k1, p1, c8b, p1, k1, yo, sk2, yo, k1, p1, k5.

**Row 24:** BO2, p3, k1, p5, k1, p8, k1, p5, k1, p8, k1, p5, k1.

**Row 25:** BO2, yo, sk2, yo, k1, p1, k8, p1, k1, yo, sk2, yo, k1, p1, k8, p1, k1, yo, sk2, yo, k1, p1, k3.

**Row 26:** BO2, p1, k1, p5, k1, p8, k1, p5, k1, p8, k1, p4.

**Row 27:** BO2, k2, p1, k8, p1, k1, yo, sk2, yo, k1, p1, k8, p1, k1, yo, sk2, yo, k1, p1, k1.

**Row 28:** BO2, p5, k1, p8, k1, p5, k1, p8, k1, p2.

**Row 29:** BO2, p1, k8, p1, k1, yo, sk2, yo, k1, p1, k8, p1, k1, yo, sk2, yo, k1.

**Row 30:** BO2, p3, k1, p8, k1, p5, k1, p8, k1.

**Row 31:** BO2, k7, p1, k1, yo, sk2, yo, k1, p1, c8b, p1, k3.

**Row 32:** BO2, p1, k1, p8, k1, p5, k1, p7.

**Row 33:** BO2, k5, p1, k1, yo, sk2, yo, k1, p1, k8, p1, k1.

**Row 34:** BO2, p8, k1, p5, k1, p5.

BO all sts knitwise.

Secure yarn.



### Med / Lg

**Row 9:** BO3 k7, p1, k1, yo, sk2, yo, k1, p1, k8, p1, k1, yo, sk2, yo, k1, p1, k8, p1, k1, yo, sk2, yo, k1, p1, k8, p1, k1, yo, sk2, yo, k1, p1, k8, p1, k1, yo, sk2, yo, k1, p1, k8, p1, k1.

**Row 10:** P1, k1, p8, k1, p5, k1, p8, k1, p5, k1, p8, k1, p5, k1, p8, k1, p5, k1, p7.

**Row 11:** BO1, k6, p1, k1, yo, sk2, yo, k1, p1, k8, p1, k1, yo, sk2, yo, k1, p1, k8, p1, k1, yo, sk2, yo, k1, p1, k8, p1, k1, yo, sk2, yo, k1, p1, k8, p1, k1.

**Row 12:** P1, k1, p8, k1, p5, k1, p8, k1, p5, k1, p8, k1, p5, k1, p8, k1, p5, k1, p6.

**Row 13:** BO1, k5, p1, k1, yo, sk2, yo, k1, p1, k8, p1, k1, yo, sk2, yo, k1, p1, k8, p1, k1, yo, sk2, yo, k1, p1, k8, p1, k1, yo, sk2, yo, k1, p1, k8, p1, k1.

**Row 14:** BO1, k1, p8, k1, p5, k1, p8, k1, p5, k1, p8, k1, p5, k1, p8, k1, p5, k1, p5.

**Row 15:** BO1, k4, p1, k1, yo, sk2, yo, p2, c8b, p1, k1, yo, sk2, yo, k1, p1, c8b, p1, k1, yo, sk2, yo, k1, p1, c8b, p1, k1, yo, sk2, yo, k1, p1, k8, p1.

**Row 16:** BO1, p8, k1, p5, k1, p8, k1, p5, k1, p8, k1, p5, k1, p8, k1, p5, k1, p4.

**Row 17:** BO1, k3, p1, k1, yo, sk2, yo, k1, p1, k8, p1, k1, yo, sk2, yo, k1, p1, k8, p1, k1, yo, sk2, yo, k1, p1, k8, p1, k1, yo, sk2, yo, k1, p1, k8.

**Row 18:** BO1, p7, k1, p5, k1, p8, k1, p5, k1, p8, k1, p5, k1, p8, k1, p5, k1, p3.

**Row 19:** BO1, k2, p1, k1, yo, sk2, yo, k1, p1, k8, p1, k1, yo, sk2, yo, k1, p1, k8, p1, k1, yo, sk2, yo, k1, p1, k8, p1, k1, yo, sk2, yo, k1, p1, k7.

**Row 20:** BO1, p6, k1, p5, k1, p8, k1, p5, k1, p8, k1, p5, k1, p8, k1, p5, k1, p2.

**Row 21:** BO1, k1, p1, k1, yo, sk2, yo, k1, p1, k8, p1, k1, yo, sk2, yo, k1, p1, k8, p1, k1, yo, sk2, yo, k1, p1, k8, p1, k1, yo, sk2, yo, k1, p1, k6.

**Row 22:** BO1, p5, k1, p5, k1, p8, k1, p5, k1, p8, k1, p5, k1, p8, k1, p5, k1, p1.

**Row 23:** BO1, p1, k1, yo, sk2, yo, k1, p1, c8b, p1, k1, yo, sk2, yo, k1, p1, c8b, p1, k1, yo, sk2, yo, k1, p1, c8b, p1, k1, yo, sk2, yo, k1, p1, k5.

**Row 24:** BO1, p4, k1, p5, k1, p8, k1, p5, k1, p8, k1, p5, k1, p8, k1, p5, k1.

**Row 25:** BO1, k1, yo, sk2, yo, k1, p1, k8, p1, k1, yo, sk2, yo, k1, p1, k8, p1, k1, yo, sk2, yo, k1, p1, k8, p1, k1, yo, sk2, yo, k1, p1, k3.

**Row 26:** BO1, p3, k1, p5, k1, p8, k1, p5, k1, p8, k1, p5, k1, p8, k1, p5.

**Row 27:** BO1, k4, p1, k8, p1, k1, yo, sk2, yo, k1, p1, k8, p1, k1, yo, sk2, yo, k1, p1, k8, p1, k1, yo, sk2, yo, k1, p1, k3.

**Row 28:** BO2, p7, k1, p8, k1, p5, k1, p8, k1, p5, k1, p8, k1, p5, k1, p3.

**Row 29:** BO2, k2, p1, k8, p1, k1, yo, sk2, yo, k1, p1, k8, p1, k1, yo, sk2, yo, k1, p1, k8, p1, k1, yo, sk2, yo, k1, p1, k3.

**Row 30:** BO2, p5, k1, p8, k1, p5, k1, p8, k1, p5, k1, p8, k1, p5, k1, p2.

**Row 31:** BO2, p1, c8b, p1, k1, yo, sk2, yo, k1, p1, c8b, p1, k1, yo, sk2, yo, k1, p1, c8b, p1, k5.

**Row 32:** BO2, p3, k1, p8, k1, p5, k1, p8, k1, p5, k1, p8, k1.

**Row 33:** BO2, k7, p1, k1, yo, sk2, yo, k1, p1, k8, p1, k1, yo, sk2, yo, k1, p1, k8, p1, k3.

**Row 34:** BO2, p10, k1, p5, k1, p8, k1, p5, k1, p7.

**Row 35:** BO2, k5, p1, k1, yo, sk2, yo, k1, p1, k8, p1, k1, yo, sk2, yo, k1, p1, k10.

**Row 36:** BO2, p8, k1, p5, k1, p8, k1, p5, k1, p5.

**Row 37:** BO2, k3, p1, k1, yo, sk2, yo, k1, p1, k8, p1, k1, yo, sk2, yo, k1, p1, k8.

**Row 38:** BO2, p6, k1, p5, k1, p8, k1, p5, k1, p3.

**Row 39:** BO2, k1, p1, k1, yo, sk2, yo, k1, p1, c8b, p1, k1, yo, sk2, yo, k1, p1, k6.

**Row 40:** BO2, p4, k1, p5, k1, p8, k1, p5, k1, p1.

**Row 41:** BO2, k1, yo, sk2, yo, k1, p1, k8, p1, k1, yo, sk2, yo, k1, p1, k4.

**Row 42:** BO2, p2, k1, p5, k1, p8, k1, p5.

### Right Wearing

CO 57(72) sts.

Work pattern sts for 9(10) repeats. (see chart Rows 1-8)

Written instructions start on Row 9 of Chart for shapping.

**Sm/Med**



**Row 9:** K1, p1, k8, p1, k1, yo, sk2, yo, k1, p1, k8, p1, k1, yo, sk2, yo, k1, p1, k8, p1, k1, yo, sk2, yo, k1, p1, k8, p1, k1, yo, sk2, yo, k1, p1, k8, p1, k1.

**Row 10:** BO3, p7, k1, p5, k1, p8, k1, p5, k1, p8, k1, p5, k1, p8, k1, p1.

**Row 11:** K1, p1, k8, p1, k1, yo, sk2, yo, k1, p1, k8, p1, k1, yo, sk2, yo, k1, p1, k8, p1, k1, yo, sk2, yo, k1, p1, k7.

**Row 12:** BO1, p6, k1, p5, k1, p8, k1, p5, k1, p8, k1, p5, k1, p8, k1, p1.

**Row 13:** BO1, p1, k8, p1, k1, yo, sk2, yo, k1, p1, k8, p1, k1, yo, sk2, yo, k1, p1, k8, p1, k1, yo, sk2, yo, k1, p1, k6.

**Row 14:** BO1, p5, k1, p5, k1, p8, k1, p5, k1, p8, k1, p5, k1, p8, k1.

**Row 15:** BO1, c8b, p1, k1, yo, sk2, yo, p2, c8b, p1, k1, yo, sk2, yo, k1, p1, c8b, p1, k1, yo, sk2, yo, k1, p1, k5.

**Row 16:** BO1, p4, k1, p5, k1, p8, k1, p5, k1, p8, k1, p5, k1, p8.

**Row 17:** BO1, k7, p1, k1, yo, sk2, yo, k1, p1, k8, p1, k1, yo, sk2, yo, k1, p1, k8, p1, k1, yo, sk2, yo, k1, p1, k4.

**Row 18:** BO1, p3, k1, p5, k1, p8, k1, p5, k1, p8, k1, p5, k1, p7.

**Row 19:** BO1, k6, p1, k1, yo, sk2, yo, k1, p1, k8, p1, k1, yo, sk2, yo, k1, p1, k8, p1, k1, yo, sk2, yo, k1, p1, k3.

**Row 20:** BO1, p2, k1, p5, k1, p8, k1, p5, k1, p8, k1, p5, k1, p6.

**Row 21:** BO1, k5, p1, k1, yo, sk2, yo, k1, p1, k8, p1, k1, yo, sk2, yo, k1, p1, k8, p1, k1, yo, sk2, yo, k1, p1, k2.

**Row 22:** BO1, p1, k1, p5, k1, p8, k1, p5, k1, p8, k1, p5, k1, p5.

**Row 23:** BO2, k3, p1, k1, yo, sk2, yo, k1, p1, c8b, p1, k1, yo, sk2, yo, k1, p1, c8b, p1, k1, yo, sk2, yo, k1, p1, k1.

**Row 24:** BO1, k1, p5, k1, p8, k1, p5, k1, p8, k1, p5, k1, p3.

**Row 25:** BO2, k1, p1, k1, yo, sk2, yo, k1, p1, k8, p1, k1, yo, sk2, yo, k1, p1, k8, p1, k1, yo, sk2, yo, k1, p1.

**Row 26:** BO1, p4, k1, p8, k1, p5, k1, p8, k1, p5, k1, p1.

**Row 27:** BO1, k1, yo, sk2, yo, k1, p1, k8, p1, k1, yo, sk2, yo, k1, p1, k8, p1, k4.

**Row 28:** BO1, p2, k1, p8, k1, p5, k1, p8, k1, p5.

**Row 29:** BO1, k3, p1, k8, p1, k1, yo, sk2, yo, k1, p1, k8, p1, k2.

**Row 30:** BO1, k1, p8, k1, p5, k1, p8, k1, p3.

**Row 31:** BO1, k1, p1, c8b, p1, k1, yo, sk2, yo, k1, p1, k8, p1.

**Row 32:** BO1, p7, k1, p5, k1, p8, k1, p1.

**Row 33:** BO1, k8, p1, k1, yo, sk2, yo, k1, p1, k7.

**Row 34:** BO1, p5, k1, p5, k1, p8.

BO all sts knitwise.  
Secure yarn.

## Med/Lg

**Row 9:** K1, p1, k8, p1, k1, yo, sk2, yo, k1, p1, k8, p1, k1, yo, sk2, yo, k1, p1, k8, p1, k1, yo, sk2, yo, k1, p1, k8, p1, k1, yo, sk2, yo, k1, p1, k8, p1, k1.

**Row 10:** BO3, p7, k1, p5, k1, p8, k1, p5, k1, p8, k1, p5, k1, p8, k1, p1.

**Row 11:** K1, p1, k8, p1, k1, yo, sk2, yo, k1, p1, k8, p1, k1, yo, sk2, yo, k1, p1, k8, p1, k1, yo, sk2, yo, k1, p1, k8, p1, k1, yo, sk2, yo, k1, p1, k7.

**Row 12:** BO1, p6, k1, p5, k1, p8, k1, p5, k1, p8, k1, p5, k1, p8, k1, p5, k1, p8, k1, p1.

**Row 13:** BO1, p1, k8, p1, k1, yo, sk2, yo, k1, p1, k8, p1, k1, yo, sk2, yo, k1, p1, k8, p1, k1, yo, sk2, yo, k1, p1, k8, p1, k1, yo, sk2, yo, k1, p1, k6.

**Row 14:** BO1, p5, k1, p5, k1, p8, k1, p5, k1, p8, k1, p5, k1, p8, k1, p5, k1, p8, k1.

**Row 15:** BO1, c8b, p1, k1, yo, sk2, yo, p2, c8b, p1, k1, yo, sk2, yo, k1, p1, c8b, p1, k1, yo, sk2, yo, k1, p1, c8b, p1, k1, yo, sk2, yo, k1, p1, k5.

**Row 16:** BO1, p4, k1, p5, k1, p8, k1, p5, k1, p8, k1, p5, k1, p8, k1, p5, k1, p8.

**Row 17:** BO1, k7, p1, k1, yo, sk2, yo, k1, p1, k8, p1, k1, yo, sk2, yo, k1, p1, k8, p1, k1, yo, sk2, yo, k1, p1, k8, p1, k1, yo, sk2, yo, k1, p1, k4.

**Row 18:** BO1, p3, k1, p5, k1, p8, k1, p5, k1, p8, k1, p5, k1, p8, k1, p5, k1, p7.  
**Row 19:** BO1, k6, p1, k1, yo, sk2, yo, k1, p1, k8, p1, k1, yo, sk2, yo, k1, p1, k8, p1, k1, yo, sk2, yo, k1, p1, k8, p1, k1, yo, sk2, yo, k1, p1, k3.  
**Row 20:** BO1, p2, k1, p5, k1, p8, k1, p5, k1, p8, k1, p5, k1, p8, k1, p5, k1, p6.  
**Row 21:** BO1, k5, p1, k1, yo, sk2, yo, k1, p1, k8, p1, k1, yo, sk2, yo, k1, p1, k8, p1, k1, yo, sk2, yo, k1, p1, k8, p1, k1, yo, sk2, yo, k1, p1, k2.  
**Row 22:** BO1, bind, p1, k1, p5, k1, p8, k1, p5, k1, p8, k1, p5, k1, p8, k1, p5, k1, p5.  
**Row 23:** BO1, k4, p1, k1, yo, sk2, yo, k1, p1, c8b, p1, k1, yo, sk2, yo, k1, p1, c8b, p1, k1, yo, sk2, yo, k1, p1, c8b, p1, k1, yo, sk2, yo, k1, p1, k1.  
**Row 24:** BO1, k1, p5, k1, p8, k1, p5, k1, p8, k1, p5, k1, p8, k1, p5, k1, p4.  
**Row 25:** BO1, k3, p1, k1, yo, sk2, yo, k1, p1, k8, p1, k1, yo, sk2, yo, k1, p1, k8, p1, k1, yo, sk2, yo, k1, p1, k8, p1, k1, yo, sk2, yo, k1, p1.  
**Row 26:** BO1, p5, k1, p8, k1, p5, k1, p8, k1, p5, k1, p8, k1, p5, k1, p3.  
**Row 27:** BO1, k3, yo, sk2, yo, k1, p1, k8, p1, k1, yo, sk2, yo, k1, p1, k8, p1, k1, yo, sk2, yo, k1, p1, k8, p1, k5.  
**Row 28:** BO1, p4, k1, p8, k1, p5, k1, p8, k1, p5, k1, p8, k1, p7.  
**Row 29:** BO2, k5, p1, k8, p1, k1, yo, sk2, yo, k1, p1, k8, p1, k1, yo, sk2, yo, k1, p1, k8, p1, k4.  
**Row 30:** BO2, p2, k1, p8, k1, p5, k1, p8, k1, p5, k1, p8, k1, p5.  
**Row 31:** BO2, k3, p1, c8b, p1, k1, yo, sk2, yo, k1, p1, c8b, p1, k1, yo, sk2, yo, k1, p1, c8b, p1, k2.  
**Row 32:** BO2, k1, p8, k1, p5, k1, p8, k1, p5, k1, p8, k1, p3.  
**Row 33:** BO2, k1, p1, k8, p1, k1, yo, sk2, yo, k1, p1, k8, p1, k1, yo, sk2, yo, k1, p1, k8, p1.  
**Row 34:** BO2, p7, k1, p5, k1, p8, k1, p5, k1, p8, k1, p1.  
**Row 35:** BO2, k8, p1, k1, yo, sk2, yo, k1, p1, k8, p1, k1, yo, sk2, yo, k1, p1, k7.  
**Row 36:** BO2, p5, k1, p5, k1, p8, k1, p5, k1, p8.  
**Row 37:** BO2, k6, p1, k1, yo, sk2, yo, k1, p1, k8, p1, k1, yo, sk2, yo, k1, p1, k5.  
**Row 38:** BO2, p3, k1, p5, k1, p8, k1, p5, k1, p6.  
**Row 39:** BO2, k4, p1, k1, yo, sk2, yo, k1, p1, c8b, p1, k1, yo, sk2, yo, k1, p1, k3.  
**Row 40:** BO2, p1, k1, p5, k1, p8, k1, p5, k1, p4.  
**Row 41:** BO2, k2, p1, k1, yo, sk2, yo, k1, p1, k8, p1, k1, yo, sk2, yo, k1, p1, k1.  
**Row 42:** BO2, p5, k1, p8, k1, p5, k1, p2.

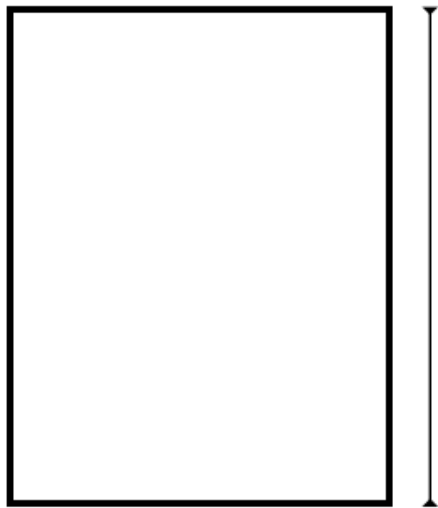
## FINISHING

With tapestry needle weave in all loose ends.

Sew shoulder seams, sew in sleeves, sew sleeve and body sides. With circular or DPN's pick up an even number of sts around neck (4 sts per inch).

Work in k1, p1 rib for 1 inch.

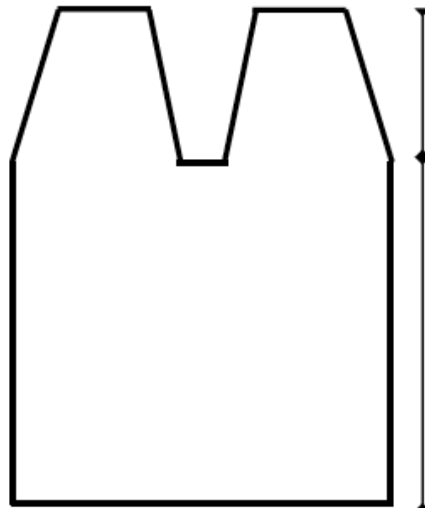
BO loosely, following rib pattern. Block to size.



25(27)  
inches



17(23) inches  
Back

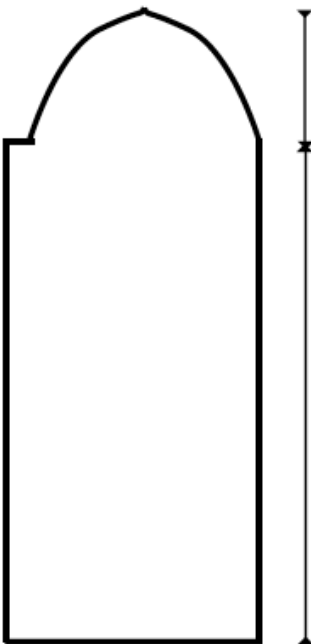


8(9) inches

17(18)  
inches



17(23) inches  
Front

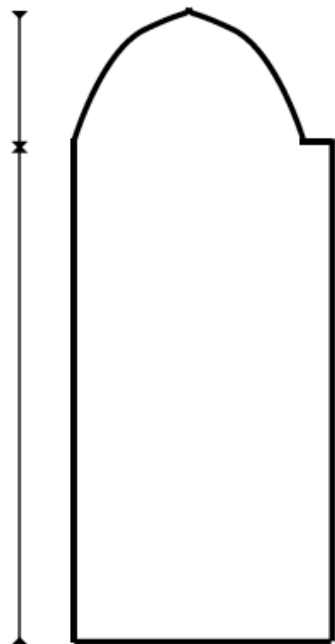


8(9) inches

17(18) inches



11(14) inches  
Right Wearing



11(14) inches  
Left Wearing