

CAPITAL FACILITIES  
PLAN **2016 - 2025**

---

This page intentionally blank

## Acknowledgments

Sno-Isle Libraries extends its gratitude to the elected officials, community leaders and residents who provided valuable input during this planning process. Those conversations, discussions and interactions helped contribute to a 10-year capital facilities plan that reflects the unique communities served by Sno-Isle Libraries. In addition, library officials would like to thank EnviroIssues and Community Attributes, Inc., who contributed to the development of this plan, as well as the Mukilteo School District who assisted greatly in outreach and engagement efforts during Phase 2 of the plan.

## Board of Trustees

Sno-Isle Libraries is directed by a seven-member Board of Trustees. Trustees are volunteers who are appointed by and represent Snohomish and Island counties.

President.....	Susan Cohn
Vice-President.....	Marti Anamosa
Secretary.....	Martin Munguia
Trustee.....	Susan Kostick
Trustee.....	Kelli Smith
Trustee.....	Rico Tessandore
Trustee.....	Rose Olson

## Contents

<b>Executive Director’s Message</b> .....	5
<b>District Map</b> .....	6
<b>Capital Facilities Plan 2016-25 Overview</b> .....	7-9
Libraries Transform .....	7
Library District Overview.....	7
Planning Ahead.....	7
Plan Timeline.....	8
Recommendations Overview .....	8-9
Capital Facility Funding .....	9
Next Steps .....	9

## Facility recommendations

128 <sup>th</sup> Street / Mariner area .....	10-11
Arlington .....	12-13
Brier .....	14-15
Camano Island .....	16-17
Clinton .....	18-19
Coupeville .....	20-21
Darrington.....	22-23
Edmonds.....	24-25
Freeland .....	26-27
Granite Falls .....	28-29
Greater Mill Creek area.....	30-31
Lake Stevens.....	32-33
Lakewood/Smokey Point area .....	34-35
Langley.....	36-37
Lynnwood .....	38-39
Marysville.....	40-41
Mill Creek.....	42-43
Monroe.....	44-45
Mountlake Terrace.....	46-47
Mukilteo .....	48-49
Oak Harbor.....	50-51
Snohomish.....	52-53
Stanwood .....	54-55
Sultan .....	56-57

## Appendices

Strategic Plan .....	58
Sno-Isle Libraries Funding .....	59
Methodology.....	60-61
Current Library Locations and 2015 Population Density .....	62-63
Sno-Isle Libraries Comparative Data .....	64-69
Sno-Isle Libraries Customer Borrowing Patterns .....	70

Planned Maintenance Schedule.....	71
Use and Community Response Data.....	72-95

## Executive Director’s Message

### Planning is the foundation to meeting community needs

Good buildings start with solid ground and strong foundations. So too, does planning for good buildings. I believe this Sno-Isle Libraries Capital Facilities Plan is based on the solid ground of community involvement and good data that will be the foundation ensuring library buildings continue to meet community and customer needs in our region over the next 10 years.

This is more than Sno-Isle Libraries’ plan, this document reflects what we heard from our communities and customers. We asked questions and listened. We received thousands of comments through two online surveys and hundreds of community and social media conversations. Residents told us they love their libraries and want more space to read, to study and to gather as a community. They want more access to technology at the library, even when it may be available at home.

We reviewed data on how customers use public libraries and commissioned a study to review national trends in libraries, technology and customer demographics.

We learned that most of our libraries meet current community needs and will continue to do so with regular ongoing maintenance. It also became evident that a few communities have outgrown their libraries and we need to work with them to replace those facilities.

We found four opportunities to show our commitment to the strategic value of free and equal access to public libraries. Tens of thousands of residents in three rapidly growing areas do not have adequate access to a public library. Plans by a fourth community for major economic development and transportation investments may call for a new, larger library in that area.

Forty years ago, the Freeland Library was a 9x12-foot corner of Bettie B’s dress shop. Changing-room curtains were pulled back to accommodate story-time sessions for children. As the community’s needs grew, so did the library and the building that now stands in Freeland. This is a great example of the results of planning and adapting to meet the community needs.

Customers are using 21 libraries across Snohomish and Island counties to transform themselves. They are borrowing books, using technology, attending programs, searching for jobs and using spaces to study and collaborate.

Sno-Isle Libraries remains committed to public stewardship of world-class library services, resources and accessibly located community libraries. The partnership with each of our communities is strong and will guide us in meeting the needs of library customers today and tomorrow.

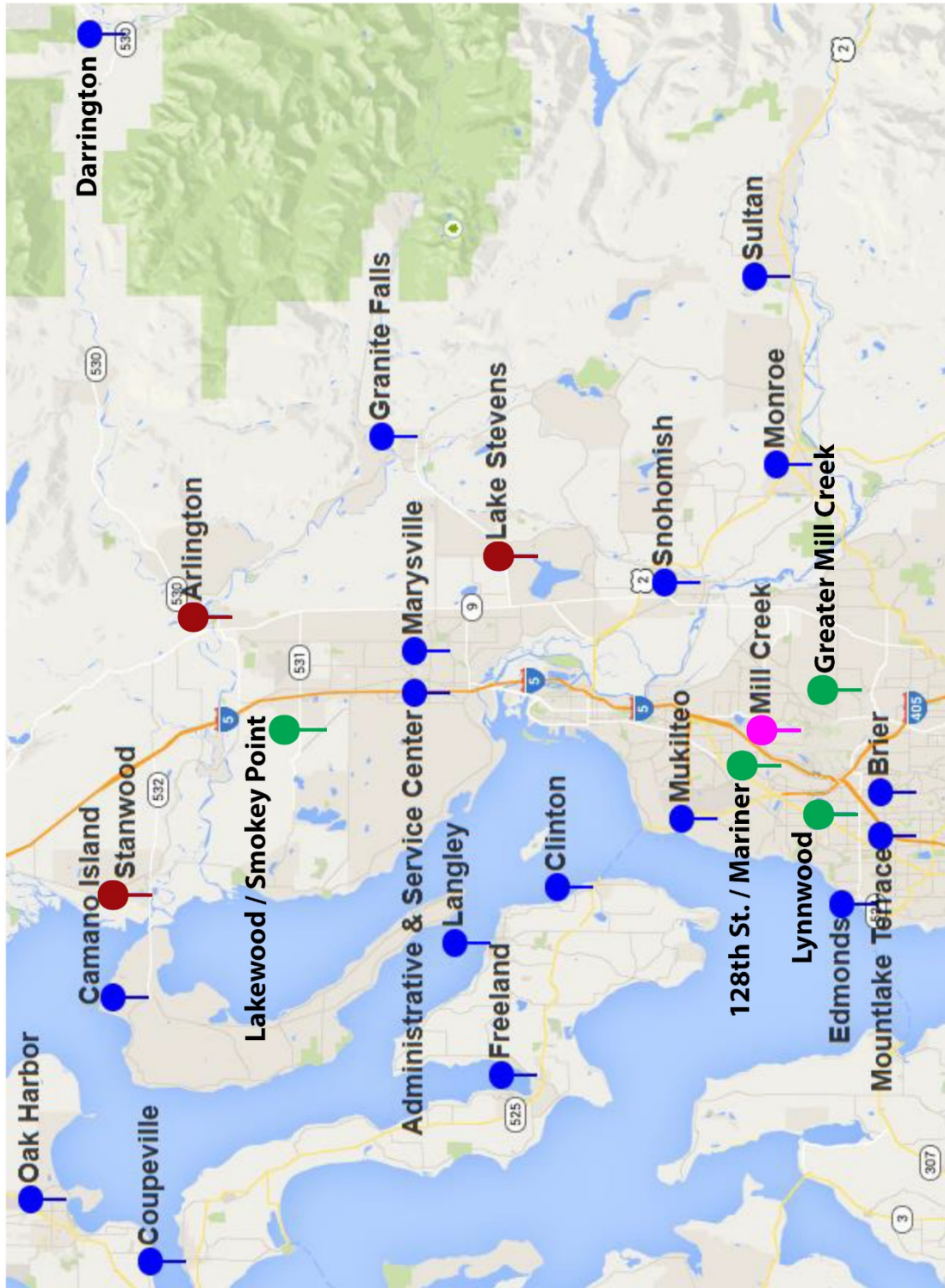


**Jonalyn Woolf-Ivory**  
**Executive Director**  
**Sno-Isle Libraries**

# Sno-Isle Libraries

## Capital Facilities 2016-25

- Maintain
- Renovate
- Replace
- Opportunity area



# Capital Facilities Plan 2016-25

## **Libraries Transform**

Public libraries transform communities by providing a center for free and equal access to ideas, information and solutions. Public libraries serve as community gathering places where individuals come together to explore, interact, imagine and evolve.

Public libraries transform people by meeting their interests and needs, as well as providing opportunities to prepare for school, search for jobs, plan for retirement, discover their history and learn more about themselves and others. Those opportunities can contribute to the library users' accomplishments and enjoyment of life, as well as enhance the sense of worth, culture, community, and connectedness.

Sno-Isle Libraries provides neutral spaces where ideas can be examined, collaborative work can be conducted, engagement around civic issues can happen, and where people can gather to discuss difficult issues that matter.

## **Library District Overview**

Sno-Isle Libraries is a tax-supported library district serving Snohomish and Island counties. The mission is to be a community doorway to reading, resources and lifelong learning, and a center for people, ideas and culture. Policy is set by a seven-member Board of Trustees appointed by the Snohomish County Council and Island County Board of Commissioners.

Sno-Isle Libraries provides a network of public library services to more than 713,000 residents across approximately 2,200 square miles. The population within the library district is projected to increase by 14 percent by 2025, with some areas growing at a much higher rate.

Library services and materials are delivered through facilities in 21 cities, towns and communities; through mobile library services and online. Eight of the 21 community libraries are owned by the library district. The library district owns the Service Center, an administrative and distribution facility in Marysville which supports library operations across the district. Twelve facilities are owned and maintained by individual cities and towns. One facility is owned by a local Friends of the Library group.

## **Planning Ahead**

Thoughtful planning is required to ensure that today's public libraries continue to meet the diverse needs of the communities and individuals. Sno-Isle Libraries continues to anticipate, adapt and innovate to serve customers in every community within the library district.

Library buildings must incorporate and be responsive to the browsing and borrowing demands for materials and popular titles in a range of evolving physical and digital media formats. Library facilities must also provide the technology which customers expect to find available in their public library, such as Internet access, public computers, and printers.

The Capital Facilities Plan addresses how Sno-Isle Libraries will meet anticipated capital facilities needs across the library district from 2016 to 2025. The goal is to identify specific, implementable facilities recommendations that are supported by data analysis and community input. This plan aligns with the Sno-



Isle Libraries Strategic Plan which guides the services, programs and strategic priorities of the library district.

Creating this plan and the recommendations was a two-phase process which included:

**Phase 1**

The initial phase included gathering and reviewing data on the size and condition of current library facilities, demographics of customers and communities, and projected population growth for each service area. Conversations were conducted with leaders from local governments and community stakeholders. Customers and residents provided input through online open house surveys and engagement events. Through the engagement process, customers shared what they want to see at their community libraries. Data analysis and public input resulted in a Phase 1 Draft Capital Facilities Plan with preliminary recommendations for existing and new library facilities.

**Phase 2**

Library officials asked the public to review and respond to the preliminary recommendations, gathered comments through an online survey, social media interactions and outreach events. Sno-Isle Libraries staff reviewed the data and comments from both phases to refine recommendations in the final 10-year Capital Facilities Plan.

**Plan Timeline**



**Recommendations Overview**

**Maintain**

The majority of Sno-Isle Libraries facilities will meet the current and projected needs of communities in Snohomish and Island County through 2025, with ongoing maintenance. All facilities not listed below are in this category.

**Renovate**

One library facility was determined to need renovation. The Mill Creek Library was built in 1987 and expanded in 1992. Based on data and a history of customer comments, the facility is significantly undersized. Although site restrictions may preclude further expansion, this plan recommends renovating the building to maximize its service to the community.

**Replace**

Three current libraries are too small to meet current and future needs and those communities have indicated interest in replacing their facilities. This plan recommends replacing the

following libraries with larger facilities:

- Arlington
- Lake Stevens
- Stanwood

### **Areas of Opportunity**

Areas currently unserved or underserved by the library district have been identified as areas of opportunity. Recommendations for additional library facilities for the areas below are based on the impacts of current and forecast population growth, community redevelopment plans and anticipated regional infrastructure improvements.

- 128th Street/Mariner area – library demonstration project
- Greater Mill Creek area – new library facility
- Lakewood/Smokey Point area – library demonstration project
- Lynnwood - The existing library facility meets current needs. However, significant residential, commercial and commuter population growth is expected by 2025. This plan recommends that library officials work with the community to support the city’s vision and accommodate additional demands for library service based within the 10-year period.

### **Capital Facility Funding**

This Capital Facilities Plan does not attempt to identify specific project costs for individual recommendations. Sno-Isle Libraries will work closely with community groups, partner agencies, local governments and stakeholders to identify an appropriate funding plan for each of the recommendations.

### **Next Steps**

Sno-Isle Libraries will work with all communities to ensure libraries continue to be well-maintained and available for the delivery of world-class library services and resources. In communities where library capital improvements are recommended, Sno-Isle Libraries will work with elected officials, community leaders and residents to:

- Ensure appropriate location and size
- Identify costs and funding sources
- Work to place public funding measures on ballots for voter decisions
- Invite community input on design and use, if library measures are approved
- Establish a project timeline from concept to opening

Unforeseen factors may influence the timing and implementation of recommendations in this document. Such factors may include city development plans, community interest in capital facilities, and ultimately voter decisions on library ballot measures. The library district will respond to and seek to address community needs for investments in world-class library facilities and services.

# Capital Facilities Recommendations



*Mariner High School (left) is one of several schools serving the growing population of 30,000 persons in the 128<sup>th</sup> Street/ Mariner Area indicated below in blue).*

## 128th Street/Mariner Area

### Recommendation

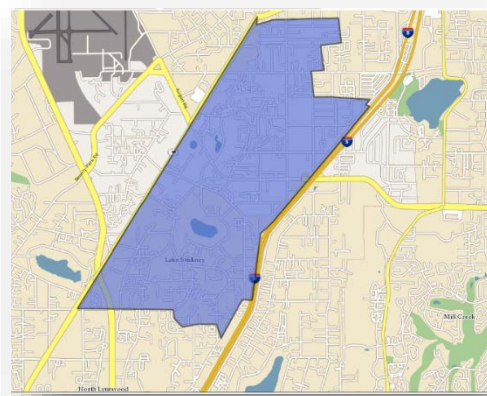
A library demonstration project within the 128<sup>th</sup> Street/ Mariner area.

### Reasoning

The area south of the Everett city limits, east of Paine Field and Mukilteo, west of Mill Creek and north of Lynnwood is underserved by the library district. Residents in this area are a significant distance from the existing Mill Creek, Mukilteo and Lynnwood libraries.

The following factors were also considered:

- Key community leaders highlighted this area as needing additional attention from Sno-Isle Libraries.
- The most recent income data show this area has higher percentages of residents living below 200 percent of the Poverty Line compared to the Mill Creek and Mukilteo library geographic regions (51 percent in the 128th Street area compared to 20 percent in Mill Creek and 21 percent in Mukilteo).



- Sno-Isle Libraries is aware of other community resources in the 128th Street area, including a Boys and Girls Club and nearby schools that would be better supported by offering library services in this area.

### **Current Library**

Currently there are no direct library services or facilities provided to residents in the area.

### **Growth Impacts**

The 128th Street area is anticipated to experience high population growth over the next 10 years. Sno-Isle Libraries is concerned the distance to nearby libraries creates travel and accessibility challenges to current and new residents resulting in non-use of library services or facilities. A library facility in a convenient location will enable easy access and better serve this area.

### **Community Response**

The final recommendation reflects the consideration of input, comments and feedback received from community members and leaders during initial and later outreach phases. Sno-Isle Libraries heard the following general themes from this community:

- The 128<sup>th</sup> Street/Mariner area needs dedicated library service to serve the growing population.
- This library should focus on meeting the needs of students from nearby schools.
- The library should provide ample parking and be located with nearby public transit service.
- Library space should be available for classes and programs (for example, English as Second Language study areas and community meetings).
- Access to technology and the Internet are high value to residents.
- Repurpose or renovate an existing structure.
- Provide additional information about what a “library demonstration project” would offer the community.

### **Key Theme**

Community and customer feedback acknowledged the need for library facility-based services conveniently located within the community and welcomes a library demonstration project.

## Arlington Community Library



*The Arlington Library is close to several schools and the downtown Arlington area.*

### Recommendation

Replace the Arlington Library.

### Reasoning

The Arlington Library is too small to meet existing and future community needs. The following factors were also considered:

- The library is located close to an elementary school and two middle schools.
- The library lacks a meeting room, and limited space for technology and children's programs.
- There has been consistent community interest expressed to replace the facility and maintain library services near its current location.

### Current Library

The Arlington Library was built in 1981.



- **Use:** In 2014, the library circulated a total of 248,752 materials and averaged 44 visitors per hour.
- **Access:** On average, current customers travel 5.1 miles to reach the Arlington Library. Thirty percent of current customers live more than five miles away from the library. The library is located close to an elementary school and two middle schools.
- **Size:** The Arlington Library is 5,055 square feet. The library currently serves 5.6 people per square foot and is forecast to serve 6.2 people per square foot by 2025.

### **Growth Impacts**

The population in Arlington and Marysville is forecast to grow by 16 percent to 123,497 by 2025. Sno-Isle Libraries expects this level of growth would lead to additional demand at the current library. Data and community feedback indicated that planning for the future of library facilities in this region should be based on a collective review of the Arlington, Marysville and Lakewood/Smokey Point areas.

### **Community Response**

The final recommendation reflects the consideration of input, comments and feedback received from community members and leaders during initial and later outreach phases. Sno-Isle Libraries heard the following general themes from this community:

- The current library is not meeting the needs of the community due to space limitations.
- The current library is dark, cramped and outdated.
- Meeting and community rooms need to be available.
- Children and teens need improved space and more materials.
- A better physical space with more natural light, windows are needed.
- An improved library could become the hub of the community.
- The current location is close to several schools and the library gets overcrowded at the end of the school day.
- Build a larger library across the street from the current facility.
- Provide improved parking.

### **Key Themes**

The community views the Arlington Library as cramped, outdated and inadequate. The community consistently expressed interest in replacing the current library with a new facility at or near the current library rather than renovating the current facility.

A library replacement should offer more shelf space for larger collections, quiet reading and study areas, teen and children's activity areas, community rooms, more computers, and better parking.

## Brier Community Library



*The Brier Library  
has a homey,  
neighborhood feel.*

### Recommendation

Maintain the current facility.

### Reasoning

The Brier Library is well-suited to its community.

- Strong community interest was indicated for the library to retain its neighborhood atmosphere.
- Anticipated population growth in the area will be accommodated by its current size and proximity to nearby libraries.
- Brier Library customers also visit the nearby and larger Mountlake Terrace and Lynnwood libraries.

### Current Library

The Brier Library was built in 1996 and operates as a small, neighborhood library.

- **Use:** In 2014, the library circulated a total of 60,762 materials and averaged 17 visitors per hour. The library is well-used by the community.
- **Access:** On average, current customers travel 2.1 miles to reach the Brier Library. Only 8 percent of customers live more than five miles away from the library.



- **Size:** The Brier Library is 2,840 square feet. The library currently serves 11.7 people per square foot and is expected to serve 13.4 people per square foot by 2025.

### **Growth Impacts**

The area surrounding the Brier Library will be the second densest area in the library district with a population density of 77 people per 10 acres by 2025. Although Brier had approximately 6,358 residents in 2015, there are 30,000 people living within the Library Geographic Region.

### **Community Response**

The final recommendation reflects the consideration of input, comments and feedback received from community members and leaders during initial and later outreach phases. Sno-Isle Libraries heard the following general themes from this community:

- The library is valuable to the community.
- The current facility works for the community, however, a meeting room and/or discrete group study areas would be beneficial.
- The “homey” environment of the library is appreciated by customers.

### **Key Theme**

Brier customers like the library’s small footprint and neighborhood ambience. The library is appropriate to meet the needs of the community although there was interest expressed in adding a meeting room or space for group study.



## Camano Island Community Library



*The Camano Library (left) is the newest facility in the library district and recently won an architectural award. Youth programming (below) is popular.*

### Recommendation

Maintain the current facility.

### Reasoning

Camano Island Library opened in 2015 replacing a library demonstration project in a nearby storefront. Public comments collected for this plan indicate the current facility meets the community's needs. The following factors were also considered:

- The library is located near several businesses and restaurants and an Island Transit station.
- The library district completed an extensive outreach process on Camano Island when designing the facility to ensure the library size and features would meet community needs.



### Current Library

The Camano Island Library was built in 2015. The library offers a community meeting room, a reading room and space for material and media collections.

- **Use:** In 2014, while housed in a temporary location, the library circulated a total of 118,989 materials and averaged 27 visitors per hour.

- **Access:** On average, current customers travel 6.2 miles to reach the Camano Island Library. Half (50 percent) of Camano Island’s customers live more than five miles from the library.
- **Size:** The Camano Island Library is 4,900 square feet. The library currently serves 3.3 people per square foot and is expected to serve 3.4 people per square foot by 2025.

### **Growth Impacts**

The area surrounding the Camano Island Library is expected to grow 3 percent with a population density of five people per 10 acres by 2025.

### **Community Response**

The final recommendation reflects the consideration of input, comments and feedback received from community members and leaders during initial and later outreach phases. Sno-Isle Libraries heard the following general themes from this community:

- Maintain the quality of the new facility through ongoing maintenance.
- The new library is an important community resource.
- The library is easy to access.
- The library has a comfortable atmosphere and employs helpful staff.
- Consider offering more or different resources in the current library.

### **Key Theme**

The new library is appropriate to meet the needs of the community.

## Clinton Community Library



*Full bloom on this day at the Clinton Library (left). Some younger customers refer to it as the “tea-set library” (below).*

### Recommendation

Maintain the current facility.

### Reasoning

The Clinton Library operates within a modular building which was moved to the current site in 2000.

Community comments indicate an interest in expanding or renovating the current facility. However, it is uncertain additional space is available at the site.

This plan recommends the Clinton, Langley, and Freeland libraries be considered collectively to serve residents of the combined areas. Data shows significant customer cross-use of all three libraries by south Whidbey Island residents.

The library district is open to supporting local capital fundraising efforts.



### **Current Library**

The Clinton Library is one of three community-based libraries serving south Whidbey Island.

- **Use:** In 2014, the library circulated a total of 49,259 materials and averaged 17 visitors per hour.
- **Access:** On average, current customers travel 4.8 miles to reach the Clinton Library. Almost a quarter (24%) of current customers live more than five miles away from the library.
- **Size:** The Clinton Library is 1,296 square feet. The library currently serves 4.9 people per square foot and is expected to serve 5.0 people per square foot by 2025.

### **Growth Impacts**

South Whidbey Island is expected to have a population of 19,750 and the library is expected to serve a population density of three people per 10 acres by 2025. This reflects an anticipated population growth of 3 percent.

### **Community Response**

The final recommendation reflects the consideration of input, comments and feedback received from community members and leaders during initial and later outreach phases. Sno-Isle Libraries heard the following general themes from this community:

- The Clinton Library was described as a community hub.
- A meeting or event space is needed.
- The need to rent Progressive Hall to house library activities and the Friends' book sale was mentioned as a reason for a larger library.
- The parking lot is too small and there is a lack of street parking.
- There is a diversity of opinion on the adequacy of the current facility.
- There is community interest in expanding and renovating the facility.

### **Key Theme**

The community has mixed sentiments on the adequacy of the current facility.

## Coupeville Community Library



*The Coupeville Library (left) serves central Whidbey Island residents. Youth programming is a popular draw (below).*

### Recommendation

Maintain the current facility.

### Reasoning

The Coupeville Library is well-sized to accommodate projected population growth. Public comments collected for this plan indicate that the current facility meets the community's needs. The following factors were also considered:

- The Coupeville Library has solar panels and a rain garden to help offset energy costs.
- The library is located two blocks from the historic business district.

### Current Library

The Coupeville Library was expanded in 2010. It includes a meeting room, reading room, a teen area and has more computers than other facilities of its size.

- **Use:** In 2014, the library circulated a total of 142,292 materials and averaged 51 visitors per hour.



- **Access:** On average, current customers travel seven miles to reach the Coupeville Library. Over one third (41 percent) of Coupeville’s customers live more than five miles from the Library.
- **Size:** The Coupeville Library was built in 1988 and expanded in 2010 to its current 6,000 square feet. The library currently serves 1.5 people per square foot and is forecast to serve 1.6 people per square foot by 2025.

### **Growth Impacts**

By 2025, the area surrounding the Coupeville Library is expected to grow by 4 percent. Coupeville is anticipated to have a population density of three people per 10 acres in 2025.

### **Community Response**

The final recommendation reflects the consideration of input, comments and feedback received from community members and leaders during initial and later outreach phases. Sno-Isle Libraries heard the following general themes from this community:

- The community appreciates the current library and its services.
- It is important for the library to have comfortable reading areas and meeting rooms.
- The 2010 building project successfully addressed the community’s needs.

### **Key Theme**

The library is appropriate to meet the needs of the community.

## Darrington Community Library



*The Darrington Library (left) shares space with City Hall. Customers in the rural area often spend time at the library (below).*

### Recommendation

Maintain the current facility.

### Reasoning

The Darrington Library is co-located with Darrington City Hall. The library is well-sized for the community and can accommodate projected population growth. The following factors were also considered:

- The library is close to multiple schools and early learning centers.
- The library is in a rural area where high-speed, wireless Internet access is limited outside town limits.
- The library acts as a hub in this remote community.
- The library includes a community meeting room, program space for children and teens, as well as a reading area.



### Current Library

The Darrington Library was built in 1990 and expanded to its current size in 2008.

- **Use:** In 2014, the library circulated a total of 55,448 materials and averaged 24 visitors per hour.

- **Access:** On average, current customers travel 7.3 miles to reach the Darrington Library. More than one third (34 percent) of customers live more than five miles away from the library.
- **Size:** The Darrington Library is 5,000 square feet. The library currently serves 0.6 people per square foot and is forecast to serve 0.8 people per square foot by 2025.

### **Growth Impacts**

Over the next 10 years, the population surrounding the Darrington Library is anticipated to grow by 30 percent. However, the area's population density is expected to remain at less than one person per 10 acres. Sno-Isle Libraries expects that the current library can accommodate this population growth.

### **Community Response**

The final recommendation reflects the consideration of input, comments and feedback received from community members and leaders during initial and later outreach phases. Sno-Isle Libraries heard the following general themes from this community:

- The computers and Internet access offered through the library are appreciated.
- Respondents support the recommendation. If anything changed, they would like the library to have more space for computers and technology.
- Respondents appreciate that the library offers meeting room space for community events.

### **Key Theme**

The current library facility is appropriate to meet the needs of the community.



## Edmonds Community Library



*The Edmonds Library (left) offers great views of Puget Sound. Partner programs such as Bikes for Books (below) donated by area Freemasons are popular.*

### Recommendation

Maintain the current facility.

### Reasoning

The Edmonds Library is well-sized for the community and can accommodate projected population growth. The following factors were also considered:

- Shared public parking lots in a busy downtown area make parking a challenge for library customers.
- The popularity of the community meeting and event space located directly above the library limits the library's opportunities to use the space for library programs.
- Expandability of the building on the site is uncertain.

### Current Library

The Edmonds Library was built in 1982.

- **Use:** In 2014, the library circulated a total of 382,188 materials and averaged 75 visitors per hour.



- **Access:** On average, current customers travel three miles to reach the Edmonds Library. Less than a quarter (13 percent) of Edmonds’s customers live over five miles from the Library.
- **Size:** The Edmonds Library is 20,000 square feet. The library currently serves 1.9 people per square foot. With anticipated population growth, the library would serve 2.3 people per square foot by 2025.

### **Growth Impacts**

The area surrounding the Edmonds Library is expected to grow 18 percent, with a forecast population density of thirty-four people per 10 acres in 2025.

### **Community Response**

The final recommendation reflects the consideration of input, comments and feedback received from community members and leaders during initial and later outreach phases. Sno-Isle Libraries heard the following general themes from this community:

- The library is convenient and centrally located.
- Inadequate parking is a major concern, especially for those with disabilities.
- Needs expressed for additional space for meeting room/events, more comfortable reading areas, shelving for collection, and additional quiet study areas.
- Public restrooms need to be remodeled and/or improved.
- Additional improvements would help maintain the library’s important role as a community space.
- Noise mitigation is needed as sound carries throughout the facility.

### **Key Theme**

The library is viewed as a community center and a hub of activity. The current library is generally appropriate to meet the needs of the community, with interest in addressing parking, and a variety of interior space needs.

## Freeland Community Library



*The Freeland Library (left) nestles into the community and is one of three facilities serving south Whidbey Island. Founder Bettie Bell is honored in artwork (below).*

### Recommendation

Maintain the current facility.

### Reasoning

The Freeland Library serves the south Whidbey Island area along with facilities in Clinton and Freeland. This plan recommends the Freeland, Clinton, and Langley libraries be considered collectively to serve residents of the combined areas.

The following factors were also considered:

- The Freeland Library parking lot is difficult to maneuver because of its slope and configuration.
- Due to site restrictions, it is unlikely parking could be expanded at the current location.

### Current Library

The Freeland Library was built in 1994 by the Friends of Freeland Library. In 2006 ownership was transferred to the library district.

- **Use:** In 2014, the library circulated a total of 171,849 materials and averaged 38 visitors per hour.



- **Access:** On average, current customers travel 5.7 miles to reach the Freeland Library. Almost half (47 percent) of current customers live more than five miles away from the library.
- **Size:** The Freeland Library was expanded to its current 4,800 square feet in 2006. The library currently serves 2.1 people per square foot, based on population density. The library is forecast to serve 2.2 people per square foot by 2025.

### **Growth Impacts**

Sno-Isle Libraries serves south Whidbey Island with three community-based libraries in Freeland, Langley and Clinton. Data shows significant cross-use by south Whidbey Island residents. It is appropriate to consider library service to the south Whidbey Island communities as a whole.

South Whidbey Island is forecast to have a population of 19,750, with a forecast population density of three people per 10 acre by 2025. This reflects an anticipated population growth of three percent.

### **Community Response**

The final recommendation reflects the consideration of input, comments and feedback received from community members and leaders during initial and later outreach phases. Sno-Isle Libraries heard the following general themes from this community:

- Additional computers, seating areas and resources are desired.
- The meeting room is important to the Freeland community and should be larger.
- The facility is well-sized to accommodate projected population growth.
- The amount of parking is inadequate and difficult to maneuver.

### **Key Theme**

The current library is appropriate to meet the needs of the community, with interest in addressing parking needs.



---

*The Granite Falls Library (left) is close to schools and a residential area. Programs such as “Reading with Rover” (below) are popular.*

---

## Granite Falls Community Library

### Recommendation

Maintain the current facility.

### Reasoning

The Granite Falls Library can accommodate projected population growth and meets the community’s needs. The following factors were considered:

- The library is located in proximity to multiple schools, the Boys and Girls Club and a large residential development.
- The library has meeting room space for community groups and library programs.
- The community has a large number of residents who travel or commute elsewhere in the county.

### Current Library

The library was built in 2001 and serves a large geographic area. The parking lot was expanded in 2013.



- **Use:** In 2014, the library circulated a total of 126,559 materials and averaged 30 visitors per hour.
- **Access:** On average, current customers travel five miles to reach the Granite Falls Library. More than a quarter (29%) of Granite Falls' customers live over five miles from the Library.
- **Size:** The Granite Falls Library is 6,534 square feet. Based on population density, the library currently serves 3.8 people per square foot. The library is forecast to serve 4.4 people per square foot by 2025.

### **Growth Impacts**

The area surrounding the Granite Falls Library is expected to grow 16 percent by 2025. The majority of population growth is expected to occur around the City of Granite Falls.

### **Community Response**

The final recommendation reflects the consideration of input, comments and feedback received from community members and leaders during initial and later outreach phases. Sno-Isle Libraries heard the following general themes from this community:

- The library and parking are appropriate for the community.
- The library is convenient to get to, has a comfortable atmosphere and employs helpful staff.
- Additional quiet study space would be useful.

### **Key Theme**

The current library is appropriate to meet the needs of the community, with interest expressed for more quiet study space.

## Greater Mill Creek Area



*Construction of multi-family and single-family housing developments (left) are filling in southeast Snohomish County (below).*

### Recommendation

Locate a new library in the greater Mill Creek area.

### Reasoning

The Mill Creek Library is located near the Town Center core of the city. The current facility is too small to adequately serve the existing customer base and the significant population growth projected in the areas east and south of the current Mill Creek Library. Strong community feedback from the greater Mill Creek area indicates that residents want the existing Mill Creek Library to remain at its current location in addition to a new library in the area. These factors contribute to a dual recommendation:

- Renovate the Mill Creek Library at the existing location.
- Locate a new facility east and south of the current Mill Creek Library to serve existing area residents and accommodate projected population growth.

### Growth Impacts

The greater Mill Creek area is forecast to become one of the most heavily-populated areas in the library district, with a projected population of 182,853 people by 2025. New growth is expected to spread southeast of the Mill Creek city limits. The Mill Creek Library is already inadequately-sized at current use levels.



Customer travel times are expected to increase and negatively impact accessibility to the library.

### **Community Response**

The final recommendation reflects the consideration of input, comments and feedback received from community members and leaders during initial and later outreach phases. Sno-Isle Libraries heard the following general themes from this community:

- The need for more library services in southeast Snohomish County is acknowledged.
- Adequate parking and convenient access are high priorities.
- Access to public transportation should be considered when siting a new library.
- Welcoming, open interior spaces that don't feel cramped are needed.
- Recognition that new schools are under construction which will increase student use of a new facility.

### **Key Themes**

General community acknowledgment was received that this area needs increased library services and access. A new facility should include ample parking, convenient public transit access, and a suitable size to meet a diverse range of service needs, including meeting/event space, study and quiet areas, a large browsing collection in all formats, designated spaces for children and teens, and comfortable seating.



## Lake Stevens Community Library



*The Lake Stevens Library (left) is adjacent to North Cove Park and City Hall. Story time is popular with many young families moving into the area.*

### Recommendation

Replace the Lake Stevens Library with a new, larger building.

### Reasoning

The Lake Stevens Library is too small to meet existing and future community needs. Public comments collected for this plan indicate strong interest in building a new library within the community. The following factors were also considered:

- The current library cannot support requested community events and library programs. In an attempt to accommodate some events and programs, library staff book space in other public facilities, such as the Lake Stevens Senior Center.
- Programs at the library generally use the small children's area, which limits access to the children's area as well as other parts of the library.
- Residents often use libraries in neighboring communities due to inadequacies of current facility.
- Forecast growth is expected to strain the size and services provided at the library.
- Expanding the facility at the current location is not possible.



## **Current Library**

The Lake Stevens Library is located in city center near North Cove Park. Renovated in 1992, the facility lacks seating, public computers and general space for studying, reading and socializing. It also does not have a meeting space for community groups or library programs.

- **Use:** In 2014, the library circulated a total of 168,223 materials and averaged 44 visitors per hour.
- **Access:** On average, current customers travel 3.3 miles to reach the Lake Stevens Library. Less than a quarter (17 percent) of customers live more than five miles away from the library.
- **Size:** The Lake Stevens Library is 2,500 square feet. The library currently serves 16.6 people per square foot and is forecast to serve 19.1 people per square foot by 2025.

## **Growth Impacts**

This already dense area is expected to become one of the most heavily populated areas in the library district, with an anticipated population of 47,713 by 2025. The fastest growing areas of the community are on the west side of the lake.

## **Community Response**

The final recommendation reflects the consideration of input, comments and feedback received from community members and leaders during initial and later outreach phases. Sno-Isle Libraries heard the following general themes from this community:

- The current building is drastically undersized and parking is too limited.
- A larger library should offer more books and other materials, group study spaces, a children's area, a meeting room, computers, space for programs, quiet reading areas, and community gathering space.
- Interest in co-locating a larger library with other public services.

## **Key Themes**

The community has outgrown the current library and is interested in a larger Lake Stevens Library facility to address needs for adequate space to enable programs for young people similar to the Marysville and the Snohomish libraries. A new library should be sized to accommodate increased population and meet a diverse set of needs, including meeting/event space; study and quiet areas; a large browsing collection in all formats; designated spaces for children and teens; and comfortable seating. Access to public transportation is important.



---

*Everett Clinic's new facility (left) is one of many new services that have come to this growing area in north Snohomish County (below).*

---

## Lakewood/Smokey Point Area

### Recommendation

A library demonstration project should be opened in the Lakewood/Smokey Point area.

### Reasoning

Residents in the Lakewood/Smokey Point area are underserved by the library district. These residents are located in the southeastern portion of Arlington, northwest Marysville and adjacent unincorporated areas immediately east and west of Interstate 5. Library customers in this area are a significant distance from the existing Arlington, Marysville, and Stanwood libraries. Grouping Arlington, Marysville and Lakewood/Smokey Point together for analysis led to strategic recommendations to efficiently address library facility needs in these communities over the next 10 years.

The following factors were also considered in making this recommendation:

- The Arlington Library is too small to adequately serve the existing customer base and the Marysville Library is one of the most-used libraries in the library district.
- Travel times for Lakewood/Smokey Point residents to the Arlington or Marysville libraries



may result in access challenges to Sno-Isle Libraries facilities.

- School children attending six public schools, within approximately 3 miles of the Interstate 5/Lakewood/Smokey Point crossing, would benefit from a nearby library demonstration facility.

### **Current Library**

There are no direct library services or facilities provided to Lakewood/Smokey Point residents.

### **Growth Impacts**

The combined Arlington/Marysville/Lakewood/Smokey Point area is projected to grow by 16 percent to a population of 123,497 by 2025. The majority of the growth is expected to occur in the Lakewood/Smokey Point area, where increasing growth and density is occurring. Sno-Isle Libraries is concerned the distance to nearby libraries creates travel and accessibility challenges to current and new residents resulting in non-use of library services or facilities. Sno-Isle Libraries believes it is important to enable equal access to library services through a more conveniently-located library facility to better serve residents and to minimize the potential for overcrowding at libraries in neighboring communities.

### **Community Response**

The final recommendation reflects the consideration of input, comments and feedback received from community members and leaders during initial and later outreach phases. Sno-Isle Libraries heard the following general themes from this community:

- The area is rapidly growing with single and multi-family housing, as well as increased numbers of seniors and retirees living in the area.
- Sno-Isle Libraries' mobile library service "Library on Wheels" is good but the area needs more.
- Travel to Arlington, Marysville, and Stanwood by car or public transit for library service is challenging.
- This library should focus on meeting the needs of students from nearby schools.
- The library should provide ample parking and be located with nearby public transit service.
- Repurpose or renovate an existing structure.
- A library should address a diverse set of community and customer interests, including a suitable browsing collection in all formats, public computers and technology, a children's area, library programs and meeting rooms.
- Locate the library demonstration facility with safety in mind.

### **Key Theme**

Providing library service in the Lakewood/Smokey Point area would benefit residents challenged by long distance travel to libraries in Arlington, Marysville or Stanwood. The area is home to a growing population of students, retirees and seniors who would benefit from a library in the vicinity. A library in Lakewood/Smokey Point should not divert resources from the Arlington Library.

## Langley Community Library



*The Langley Library (left) is on the historic register and part of the town's popular downtown area. Library customers take advantage of public computers, printers and free Internet (below).*

### Recommendation

Maintain the current facility.

### Reasoning

The Langley Library serves the south Whidbey Island area along with facilities in Clinton and Freeland. This plan recommends the Langley, Freeland, and Clinton libraries be considered collectively to serve residents of the combined areas.

The following factors were considered:

- The current library is difficult to expand due to site and space restrictions.
- The building is on the historic register, so expanding or renovating the existing structure would require significant resources.



### Current Library

The Langley Library was built in 1923 and is one of three community-based libraries serving south Whidbey Island.

- **Use:** In 2014, the library circulated a total of 101,076 materials and averaged 31 visitors per hour.
- **Access:** On average, current customers travel 5.7 miles to reach the Langley Library. Almost half (44 percent) of current customers live more than five miles away from the library.
- **Size:** The Langley Library was built in 1923 and expanded in 1994. The facility is 3,541 square feet and currently serves 0.7 people per square foot.

### **Growth Impacts**

Sno-Isle Libraries serves south Whidbey Island with three community-based libraries in Langley, Clinton and Freeland. Library data shows significant cross-use by people who live in one community and borrow from another. It is appropriate to consider library service to the south Whidbey Island communities as a group.

South Whidbey Island is anticipated to have a population of 19,750 and a population density of three people per 10 acres by 2025. This reflects an anticipated population growth of 3 percent.

### **Community Response**

The final recommendation reflects the consideration of input, comments and feedback received from community members and leaders during initial and later outreach phases. Sno-Isle Libraries heard the following general themes from this community:

- The atmosphere of the library is warm, friendly and inviting.
- Easy access to the library is appreciated.
- The library is a benefit to the community.
- The library needs a meeting room.

### **Key Theme**

The current library is appropriate to meet the needs of the community, with interest expressed for a meeting room. However, making changes could be difficult and/or expensive because of the historic status of the building.

## Lynnwood Community Library



*The Lynnwood Library (left) is part of the city's current civic center. All sizes of customers are accommodated (below).*

### Recommendation

Maintain the current facility until conditions change requiring a different library facility as part of a new civic campus.

### Reasoning

The Lynnwood Library meets current needs. However, growth is converging on Lynnwood. The City of Lynnwood is considering a new civic center which includes the potential for a new and larger library. Sno-Isle Libraries will work with city officials to ensure the library continues to serve the community and commuter populations as significant population growth, economic expansion, and transportation improvements occur.

Factors considered for this recommendation include:

- Significant residential, commercial and commuter population growth is expected in Lynnwood by 2025.
- More than 1,000 multi-family housing units are currently under construction or permitted for the area.
- Lynnwood serves as a regional transit hub.
- Link Light Rail is expected to open in 2023.



## **Current Library**

The Lynnwood Library is located in a heavily trafficked transitional area between commercial and residential uses. The library has a Creative Tech Center providing hardware, software and other technology to aid creativity, collaboration and multimedia projects. The library provides targeted services for diverse populations, including American Sign Language, English as a Second Language and U.S. citizenship classes.

- **Use:** In 2014, the library circulated a total of 734,309 materials and averaged 136 visitors per hour.
- **Access:** On average, current customers travel 3.7 miles to reach the Lynnwood Library and 15 percent of customers live more than five miles away from the library.
- **Size:** The Lynnwood Library is 25,920 square feet. It was built in 1971 and renovated in 1999. The library currently serves 2.3 people per square foot.

## **Growth Impacts**

The Lynnwood area population is expected to be 63,347, with a population density of 57 people per 10 acres by 2025.

Over the next 10 years, Lynnwood will become a regional transportation hub with state and interstate highways, local, commuter and bus rapid transit lines, and a new Sound Transit Link Light Rail station scheduled to open in 2023. Urban planners expect enhanced transportation access to Lynnwood to increase regional travel to Lynnwood for work, school, shopping, and other purposes, including to access library services.

## **Community Response**

The final recommendation reflects the consideration of input, comments and feedback received from community members and leaders during initial and later outreach phases. Sno-Isle Libraries heard the following general themes from this community:

- The library provides an important service to the community and is busy at all hours.
- Current location is convenient with public transit options.
- More parking, especially for disabled customers, is needed.
- Create separate and larger areas for children, teens, and for quiet study.
- More meeting and study rooms are needed.
- The library will need to expand to accommodate population growth.
- Concerns noted about where a new, larger facility would be located.

## **Key Theme**

The current facility is appropriate to meet today's needs but may not be adequate for expected growth and demand. Community interest was expressed for continued partnership between Sno-Isle Libraries and the City to address future needs.



## Marysville Community Library



*The Marysville Library (left) includes a Creative Tech Center. Lego robotics (below) is a popular program at the tech center.*

### Recommendation

Maintain the current facility.

### Reasoning

Projected population growth can be accommodated by the current facility. Population growth is projected for the area north of Marysville and this plan recommends the Marysville Library, a new Arlington Library and library services in the Lakewood/Smokey Point area be considered collectively to serve residents of the combined areas.

### Current Library

The Marysville Library was built in 1995 and ownership of the facility was transferred to the library district in 2015. It has a creative tech center that specializes in consumer technology including computers and digital conversion equipment. The Marysville Library has meeting rooms for community groups and library programs



- **Use:** In 2014, the library circulated a total of 626,315 materials and averaged 90 visitors per hour.
- **Access:** On average, current customers travel 4.8 miles to reach the library. Thirty-three percent of current customers live more than five miles away from the library.

- **Size:** The Marysville Library is 23,000 square feet. The library currently serves 3.1 people per square foot. By 2025, the library is expected to serve 4.0 people per square foot.

### **Growth Impacts**

The area around Arlington and Marysville is anticipated to have a population of 123,497 and a population density of 11 people per 10 acres by 2025. This reflects an anticipated population growth of 16 percent. Data and community feedback indicated that considering these areas collectively would lead to more appropriate recommendations for future library facilities. The majority of the anticipated growth in Arlington and Marysville is expected to occur in the Lakewood/Smokey Point area, where increased growth and density is currently occurring and expected to continue. Sno-Isle Libraries is proposing to establish new library service in the Lakewood/Smokey Point area which will also be available to current Marysville Library customers.

### **Community Response**

The final recommendation reflects the consideration of input, comments and feedback received from community members and leaders during initial and later outreach phases. Sno-Isle Libraries heard the following general themes from this community:

- The library is a community asset, important to the quality of life, and has kept up with the pace of change and growth in Marysville.
- The library is an appropriate size for the community and has a spacious and comfortable feel.
- The new Creative Technology Center at the library is an asset.
- The Marysville Library is used by residents from nearby communities (Arlington and Lake Stevens) whose local libraries are too small to meet residents' needs.
- Additional quiet study and reading areas, as well as additional titles and browsing resources would be appreciated.
- Make use of the grassy areas outside the library building, such as tables or benches for people to sit, read or study.

### **Key Theme**

The current facility is considered appropriate to meet the needs of the community, with interest expressed in quiet and reading areas, inside and outside the facility.

## Mill Creek Community Library



*The Mill Creek Library (left) sits across Bothell-Everett Highway from the Mill Creek Town Center. School-age customers often use the space for studying (below).*

### Recommendation

Renovate the current Mill Creek Library.

### Reasoning

The Mill Creek Library is too small to adequately serve the existing customer base. This plan recommends the Mill Creek Library and Greater Mill Creek area to the east and south be considered collectively to serve residents of the combined areas.

Other factors considered include:

- The facility lacks a meeting room space for library programs and community meetings.
- Parking concerns have been significant and consistent.
- Significant growth is occurring in areas east and south of the current Mill Creek library.
- Community feedback from the greater Mill Creek area indicates that residents want the existing Mill Creek Library to remain at its current location in addition to a new library to serve residents and accommodate projected population growth.



## **Current Library**

The Mill Creek Library was built in 1988 and expanded in 1992. The library is centrally located within Mill Creek city limits. There are no meeting spaces at the library.

- **Use:** In 2014, the library circulated a total of 645,356 materials and averaged 84 visitors per hour, making the Mill Creek Library one of the most heavily-used libraries in the library district.
- **Access:** On average, current customers travel 3.1 miles to reach the Mill Creek Library. Twelve percent of customers live more than five miles away from the library. While some library customers do cross I-5 to reach the Mill Creek Library, transportation barriers may cause residents to either travel farther distances to get to a library or simply not use Sno-Isle Libraries' services or facilities.
- **Size:** The Mill Creek Library is 7,400 square feet. The library currently serves 22.3 people per square foot. By 2025 the library is expected to serve 24.7 people per square foot.

## **Growth Impacts**

The greater Mill Creek area is projected to have 182,853 residents and a population density of 69 people per 10 acres by 2025. New growth is expected to spread southeast. This projected growth would further strain the facility and services offered at the Mill Creek Library.

## **Community Response**

The final recommendation reflects the consideration of input, comments and feedback received from community members and leaders during initial and later outreach phases. Sno-Isle Libraries heard the following general themes from this community:

- The current location is convenient; however, it is acknowledged that the facility is too small to provide services and the footprint does not allow expansion.
- Inadequate parking is a consistent concern.
- The current library does not provide needed meeting room/event space, quiet study areas, an adequate public computer and technology area or enough space for library materials.
- There is interest in locating and renovating a larger existing structure to replace the current facility or renovating and reconfiguring the current building to provide additional space.

## **Key Theme**

The lack of available parking is a concern, however, keeping a library at the current location is a consistent theme of the community.



*The Monroe Library (left) is close to schools and other services. The dramatic wall of windows (below) creates a peaceful atmosphere.*

## Monroe Community Library

### Recommendation

Maintain the current facility.

### Reasoning

The Monroe Library is well-sized for the community. Projected population growth can be accommodated by the facility. Public comments collected for this plan indicate that the current facility meets the community's needs.

### Current Library

The Monroe Library was built in 2002 and serves a large geographic area. The Monroe Library has a meeting room, study room, and the largest collection of Spanish books, DVDs and other materials in the library district. The library is located near multiple schools, parks, a senior center and City Hall.

- **Use:** In 2014, the library circulated a total of 291,476 materials and averaged 56 visitors per hour.



- **Access:** On average, current customers travel 5.2 miles to reach the Monroe Library. More than a third (36 percent) of Monroe’s customers live over five miles from the Library.
- **Size:** The Monroe Library is 20,000 square feet. The library currently serves 1.8 people per square foot. By 2025 the library is expected to serve 2.1 people per square foot.

### **Growth Impacts**

The area surrounding the Monroe Library is expected to grow 13 percent by 2025. Monroe is anticipated to have a population density of 11 people per 10 acres in 2025. The majority of population growth is expected to occur within the City of Monroe.

### **Community Response**

The final recommendation reflects the consideration of input, comments and feedback received from community members and leaders during initial and later outreach phases. Sno-Isle Libraries heard the following general themes from this community:

- The current library facility is well-sized and well-sited with ample parking.
- Respondents appreciate the library’s large collection of materials.
- The library has a comfortable atmosphere, employs helpful staff and fosters a sense of community.
- Some respondents shared concerns over noise levels in the library, and expressed a desire for more quiet spaces for reading and study.

### **Key Theme**

The current facility is considered appropriate to meet the needs of the community, with interest expressed regarding concerns over periodic high noise levels.

## Mountlake Terrace Community Library



*The Mountlake Terrace Library (left) is close to I-5 and a public transit center. Business-related programming in the library (below) is popular.*

### Recommendation

Maintain the current facility.

### Reasoning

The Mountlake Terrace Library is one of the most accessible facilities in the district. It is located close to Interstate-5 and a public transit center. The library can accommodate projected population growth and public comments collected for this plan indicate that the current facility meets the community's needs.

### Current Library

The Mountlake Terrace Library was built in 1988.

- **Use:** In 2014, the library circulated a total of 183,465 materials and averaged 42 visitors per hour.
- **Access:** On average, current customers travel 3.1 miles to reach the Mountlake Terrace Library. Fifteen percent of customers live more than five miles away from the library.
- **Size:** The Mountlake Terrace Library is 12,842 square feet in size. Based on population density, the library currently serves 1.3 people per square foot. With anticipated population growth, by 2025 the library would serve 1.7 people per square foot.



### **Growth Impacts**

Over the next 10 years, population in the area is projected to grow by 27 percent with a population density of 84 people per 10 acres. Sno-Isle Libraries expects that the current library can accommodate this increase in new customers.

### **Community Response**

The final recommendation reflects the consideration of input, comments and feedback received from community members and leaders during initial and later outreach phases. Sno-Isle Libraries heard the following general themes from this community:

- The library is valued as a significant community resource.
- Customers are satisfied with the size of the building, parking availability and the comfortable atmosphere.
- It is important to provide a wide variety of resources for browsing such as books, magazines, media and ebooks.
- The availability of computers and printers are important to customers.
- More quiet reading and study spaces are needed.
- Readjust or change the interior to improve natural lighting, comfortable seating and reduce noise levels.

### **Key Themes**

The current facility meets most community needs and is conveniently located. Interest was expressed in reconfiguring space in the facility to provide additional quiet reading and study spaces, improved natural lighting, comfortable seating and reduced noise levels.



## Mukilteo Community Library



*The Mukilteo Library (left) is close to schools and nature trails. Proximity to public schools draws school-age customers.*

### Recommendation

Maintain the current facility.

### Reasoning

The Mukilteo Library can accommodate population growth forecast during this period. Community comments indicate an interest in expanding or renovating the current facility. However, it is uncertain additional space is available at the site. The library district is open to supporting local capital fundraising efforts.

### Current Library

The Mukilteo Library is located close to an elementary school, a middle school and a high school.



- **Use:** In 2014, the library circulated a total of 454,372 materials and averaged 86 visitors per hour. Students from nearby schools are heavy users of the library.
- **Access:** On average, current customers travel 3.5 miles to reach the Mukilteo Library. Sixteen percent of customers live more than five miles away from the library.
- **Size:** The Mukilteo Library is 15,000 square feet. Based on population density, the library currently serves 2.2 people per square foot. With anticipated population growth, by 2025 the library would serve 2.7 people per square foot.

### **Growth Impacts**

Mukilteo is anticipated to have a population of 40,358 and a population density of 23 people per 10 acres by 2025. This reflects an anticipated population growth of 20 percent. This growth will make Mukilteo one of the fastest growing areas in the library district over the next 10 years.

The library is heavily used by school-age customers and this will likely continue over the next 10 years. Offering adequate study and meeting space for teens while accommodating other users will be important to meet the needs of the Mukilteo community.

### **Community Response**

The final recommendation reflects the consideration of input, comments and feedback received from community members and leaders during initial and later outreach phases. Sno-Isle Libraries heard the following general themes from this community:

- The library is a vital community asset and enhances the quality of life.
- Respondents are divided between maintaining the current building as is and expanding at the site.
- There is a high level of satisfaction with this facility.
- The children's area is undersized for the population it serves.
- There is interest in adding study rooms, quiet areas, more technology spaces, increased shelving for collection, and dedicated teen/tween areas.
- Noise, overcrowding after school and inadequate parking are concerns.

### **Key Theme**

The current facility is well-used and considered appropriate to meet the needs of the community, with interest expressed in adding study rooms, quiet areas, additional space for teens and younger customers, as well as additional parking.

## Oak Harbor Community Library



*The Oak Harbor Library (left) shares space with Skagit Valley College. The co-location makes it attractive to a broad range of customers (below).*

### Recommendation

Maintain the current facility.

### Reasoning

The Oak Harbor Library shares a facility with Skagit Valley College. The library is well-sized for the community and can accommodate projected population growth.

### Current Library

The Oak Harbor Library was built in 1993. The library is the Whidbey Island Region Reference Center, houses a health and medical special collection and shares a multipurpose room with the Skagit Valley College.



- **Use:** In 2014, the library circulated 362,618 materials and averaged 67 visitors per hour. Library programs at the Oak Harbor Library are popular with high attendance.
- **Access:** On average, current customers travel 4.3 miles to reach the Oak Harbor Library. Twenty-three percent of customers live more than five miles away from the library.
- **Size:** The Oak Harbor Library is 11,200 square feet. The library currently serves 3.2 people per square foot. By 2025, the library is expected to serve 3.4 people per square foot.

### Growth Impacts

The population in the area surrounding the Oak Harbor Community library is expected to increase to 38,560 with a population density of nine people per 10 acres by 2025. This reflects an anticipated population growth of 6 percent.

### **Community Response**

The final recommendation reflects the consideration of input, comments and feedback received from community members and leaders during initial and later outreach phases. Sno-Isle Libraries heard the following general themes from this community:

- The library is easy to access and fosters a sense of community.
- There is desire for a large collection of materials, comfortable reading areas, quiet study areas and community event space.
- The recommendation to maintain the facility was endorsed.
- Interest in a larger facility is tied to growth in community population and college enrollment.
- Diverse responses were given on potential locations of a larger library and whether existing vacant buildings should be used.

### **Key Theme**

The current facility is considered appropriate to meet the needs of the community, with interest expressed in pursuing a larger facility when population and college enrollment growth demands exceed the capacity of the current library building.

## Snohomish Community Library



*The Snohomish Library (left) is on the Centennial Trail. Library customers find a diverse collection of titles on library shelves (below).*

### Recommendation

Maintain the current facility.

### Reasoning

The Snohomish Library can accommodate projected population growth and meets the community's needs. The following factors were also considered:

- High volume of visitors and program attendees signify that the library is well-used by the community.
- The Snohomish Library is located near a Boys and Girls Club and a senior center that provide additional programming and event space for the community.



### Current Library

The Snohomish Library was built in 2003 and has a meeting room for community groups and library programs. The library is the East Region Reference Center and has a special collection focused on the arts, humanities and genealogy.

- **Use:** In 2014, the library circulated a total of 496,486 materials and averaged 80 visitors per hour. Programs at the Snohomish Library are popular, with one of the highest 2014 program attendance numbers in the library district.
- **Access:** On average, current customers travel 5.2 miles to reach the Snohomish Library. Forty-two percent of customers live more than five miles away from the library.
- **Size:** The Snohomish Library is 23,000 square feet. The library currently serves 2.0 people per square foot. By 2025, the library is expected to serve 2.3 people per square foot.

### **Growth Impacts**

The population is expected to reach approximately 52,212 residents, with a population density of 11 people per 10 acres by 2025. This reflects an anticipated population growth of 16 percent. This growth is expected to occur east of the City of Snohomish.

### **Community Response**

The final recommendation reflects the consideration of input, comments and feedback received from community members and leaders during initial and later outreach phases. Sno-Isle Libraries heard the following general themes from this community:

- Words such as “awesome” and “fantastic” were used to describe the library building, the parking, and available resources.
- Comfortable reading and quiet study spaces are appreciated.
- The library is spacious and comfortable with beautiful lighting.
- The library is used by residents of nearby communities, such as Mill Creek and Lake Stevens.

### **Key Themes**

The current facility is appropriate to meet the needs of the community. The library serves as regional resource and draws customers from other communities who may be closer to smaller, more crowded facilities. It is important to the community that the library continues to offer a large collection of books and electronic media.

## Stanwood Community Library



*The Stanwood Library (left) is a community landmark which has made an impact on many residents, including speaker and author, Joshua Safran, shown reuniting with Stanwood residents after a library event (below).*

### Recommendation

Replace the library with a larger building.

### Reasoning

The Stanwood Library is too small to meet existing and future community needs. Public comments collected for this plan indicate strong interest in a new, larger library.

The following factors were also considered for this recommendation:

- The current location for the library may not accommodate an expanded library
- The City of Stanwood and the community are interested in a new library building.

### Current facility



The Stanwood Library was built in 1971 and renovated in 1986. The small meeting room is heavily used. Public seating, study tables and computers are limited due to lack of space.

- **Use:** In 2014, the library circulated 253,168 materials and averaged 45 visitors per hour.
- **Access:** On average, current customers travel 6.7 miles to reach the Stanwood Library. Over half (58 percent) of library customers live more than five miles from the library.
- **Size:** The Stanwood Library is 5,400 square feet. The library currently serves 3.9 people per square foot. By 2025, the library is expected to serve 4.4 people per square foot.

### **Growth Impacts**

The population surrounding the Stanwood Community library is projected to grow by 14 percent to 23,760 by 2025.

### **Community Response**

The final recommendation reflects the consideration of input, comments and feedback received from community members and leaders during initial and later outreach phases. Sno-Isle Libraries heard the following general themes from this community:

- A library in a smaller town is a very important resource.
- The size and needs of the community have grown beyond the library's capabilities, with some customers and residents avoiding the library due to inadequate parking, crowded use, noise and lack of resources.
- A new library should provide a larger collection of books and other resources onsite.
- It's important for the library to offer additional titles and materials and space for children and teens.
- There is interest in multiple rooms for meetings, classes and community gatherings.
- Diverse responses were given on potential locations of a larger library in historic downtown or outside the flood plain, and interests in repurposing existing vacant buildings.

### **Key Theme**

The current library is considered inadequate to meet current and future needs. Expressed needs included additional space needed for community events, meetings, quiet study areas, public computers and more technology, as well as comfortable spots for reading.





*The Sultan Library (left) is on the first floor with City Hall offices on the second floor. The library is a destination for families in the rural area (below).*

## Sultan Community Library

### Recommendation

Maintain the current facility.

### Reasoning

The Sultan Library can accommodate projected growth estimates for the community. The library is close to several schools and well-sized for the community and projected population growth. Public comments collected for this plan indicate that the current facility meets the community's needs.

### Current Library

The Sultan Library was built in 1999. The library has access to a City Hall meeting room for community meetings and library programs.

- **Use:** In 2014, the library circulated a total of 108,057 materials and averaged 35 visitors per hour.
- **Access:** On average, current customers travel 5.5 miles to reach the Sultan Library. About 42



percent of customers live more than five miles away from the library.

- **Size:** The Sultan Library is 4,400 square feet. Based on population density, the library currently serves 5.1 people per square foot. With anticipated population growth, by 2025 the library would serve 6.1 people per square foot.

### **Growth Impacts**

The area surrounding the Sultan Community library is anticipated to have a population of 24,277 and a population density of one person per acre by 2025. This reflects an anticipated population growth of 20 percent.

### **Community Response**

The final recommendation reflects the consideration of input, comments and feedback received from community members and leaders during initial and later outreach phases. Sno-Isle Libraries heard the following general themes from this community:

- The current location is convenient and easy to access.
- It is an important resource for the community.
- There is some concern about future space needs.
- Some respondents asked for more quiet areas or a small study room.
- There was also a request for more titles and library materials.
- There was some interest in satellite library service in areas east of Sultan.
- Meeting room scheduling can be challenging.

### **Key Theme**

The current facility is considered appropriate to meet the needs of the community.

## APPENDIX A

### Sno-Isle Libraries Strategic Plan



## APPENDIX B

### Sno-Isle Libraries Funding

Sno-Isle Libraries and partner communities have traditionally secured funding for community library facilities through one or more of the capital investment options or agreements shown below:

**City-owned** - City or town officials fund or provide a building to serve as a public library. The city/town continues to own and maintain the structure. Sno-Isle Libraries enters into a contract with the city/town to provide library services and regular maintenance through an interlocal agreement.

**Library capital facilities** – First, a Library Capital Facilities Area must be approved by voters within which taxes can be collected. Then, in a separate measure, voters must approve a property bond levy to authorize the collection of those funds. The library district uses the funds from a library bond levy to improve, construct, renovate or expand a library facility.

**Local support** - A local organization, such as a Friends of the Library group, raises and uses private funds to purchase, build or improve a library facility and the library district agrees to use that building to provide library service.

**Demonstration project** – Sno-Isle Libraries works with a community to introduce and provide local library services from a leased building which is converted into a community library facility. This demonstration of library service was the approach used initially on Camano Island.

### Funding for General Library Operations and Maintenance

Ninety-eight percent of the funding for Sno-Isle Libraries comes from a general library operations levy (or tax) on property owners within the library district. This levy appears on the property tax statements of all properties in the unincorporated areas of Snohomish and Island County, as well as properties within cities which have voted to annex into the Sno-Isle Libraries district.

## APPENDIX C

### Methodology

Each community in the library district is unique, with different needs and goals. The Capital Facilities Plan is meant to reflect this diversity with recommendations for each community, while maintaining a regional perspective on the facilities needed across the library district.

#### How these recommendations were reached

- Analyzed library usage, library access and population growth data.
- Gathered public input through online and scheduled in-person open-house events.
- Discussed facility needs with community leaders, stakeholders and elected officials.

#### Using data to identify underserved communities

Data was gathered to understand how current customers use the library, how far they travel to access the library and how the size of the library impacts their use. In addition, population and demographic information was reviewed to better understand current customers and the impacts of population growth. The table below describes different types of data gathered.

Library usage data	Population/demographic data
Borrowing (physical and electronic)	2015 population
Reserving library materials/holds	Projected 2025 population
Library visits	Unemployment
Population served	Age distribution
Program attendance	Language spoken at home
Age/condition of facility	Household income
Facility size (square feet)	Household size and composition
# of computers, meeting rooms and quiet study spaces	Educational attainment

Sno-Isle Libraries and its consultants developed analysis areas called Library Geographic Regions. Library Geographic Regions were defined using Census Block Groups. Each Library Geographic Region included all of the Census Block Groups in the library district whose center points were closer to a specified library than any other library in the library district. In most cases, this defined area was used to assess travel conditions to libraries and population growth impacts. In some service areas, however, Census Block Groups did not reflect the library district's customer data. Such areas include south Whidbey Island, which includes three libraries with significant cross-library use, and the Brier Library, which focuses on the Brier community rather than a larger Census Block Group area.

#### Community input

Community input is a principal component of making the Capital Facilities Plan successful. Sno-Isle Libraries received input from community residents, customers, stakeholders and leaders which reflected the needs and goals of the communities, how they use a library, what they see as the most important spaces the library should have and recommended changes and improvements.

In the development of the Capital Facilities Plan, Sno-Isle Libraries implemented two major phases of outreach:

**Phase 1 Outreach**

Sno-Isle Libraries sought input from community stakeholders early in the process to learn their vision for future library facilities and to gather their input on facility needs.

Sno-Isle Libraries involved local residents in conversations about what their community libraries should look like in the next ten years. From September 28 to November 9, 2015, participants were encouraged to share their vision for the future, recognize current successes and identify goals that community libraries can help meet, including service and facility needs. Sno-Isle Libraries received input from 5,013 individuals through stakeholder interviews, large in-person open houses, in-person small events and an online open house and survey.

**Phase 2 Outreach**

Sno-Isle Libraries shared preliminary recommendations in a Draft Capital Facility Plan with communities across the library district in order to gather additional input and feedback. Methods included:

- Online survey
- Outreach events
- Social media
- Sno-Isle website
- Media coverage

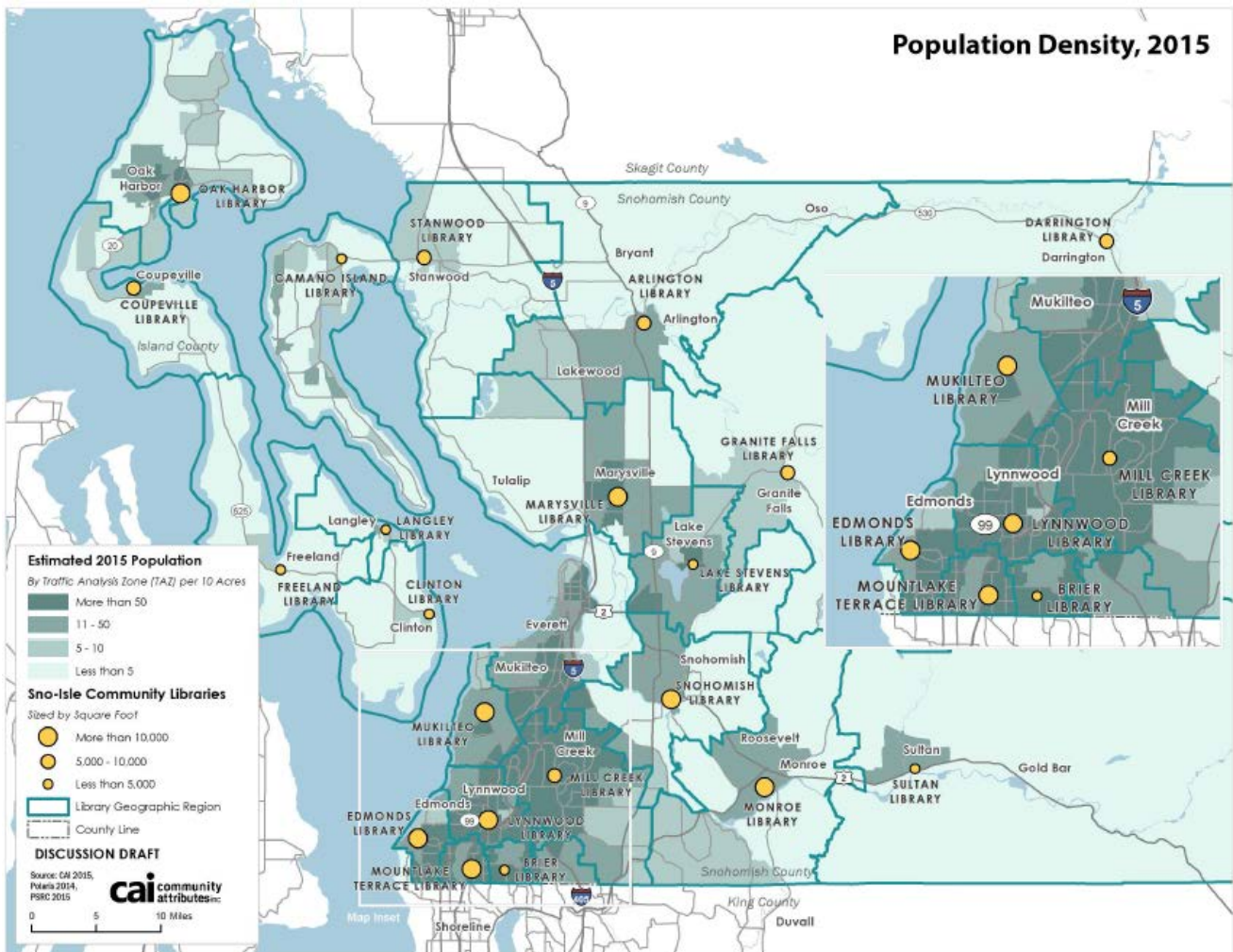
**Factors used to develop recommendations**

Consideration factors	Questions considered
Access	<ul style="list-style-type: none"> <li>○ Is the library in an easily accessed location?</li> <li>○ How far would current and future customers have to travel to visit the library?</li> <li>○ Is public transit nearby or will it be available in the future?</li> </ul>
Community feedback	<ul style="list-style-type: none"> <li>○ Has the community expressed a preference for a new or renovated facility?</li> <li>○ Does the community want space for programs/services the current library cannot accommodate?</li> </ul>
Current facility usage and trends	<ul style="list-style-type: none"> <li>○ Is the library of sufficient size and configuration to meet current needs?</li> <li>○ Do trends in library use suggest the need for different types of spaces within the library?</li> </ul>
Population growth	<ul style="list-style-type: none"> <li>○ Can the current facility adequately serve new residents based on projected 2025 population growth?</li> </ul>
Urgency	<ul style="list-style-type: none"> <li>○ Are improvements necessary now to meet current demands?</li> <li>○ Are improvements necessary to meet expected needs in the next ten years?</li> </ul>

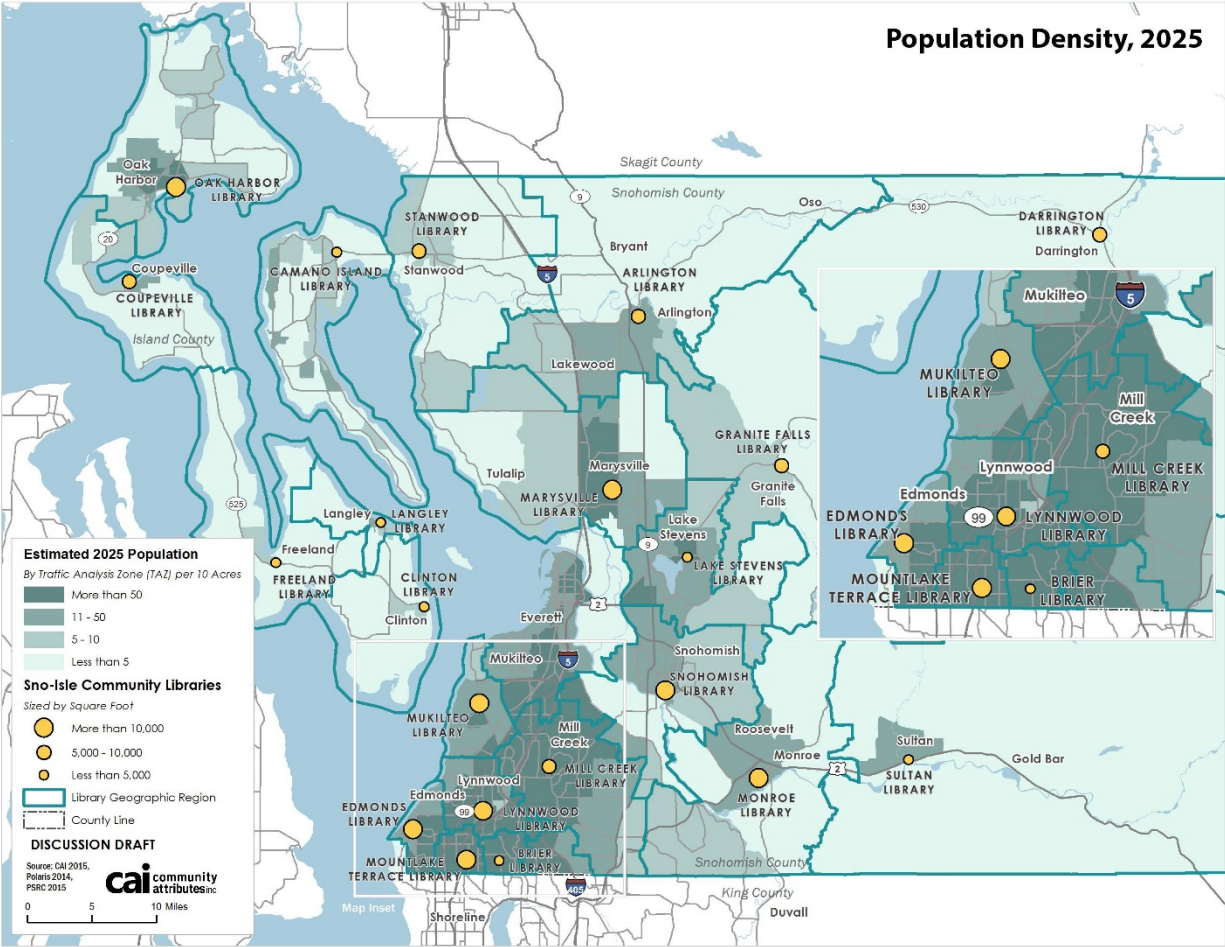
## APPENDIX D

### Current Library locations and population density

This map shows the locations of current Sno-Isle Libraries facilities and their relative size (large dots = larger facilities) in the context of current population density (darker color = higher density). Population density is the ratio of people per 10 acres.



# Population Density, 2025

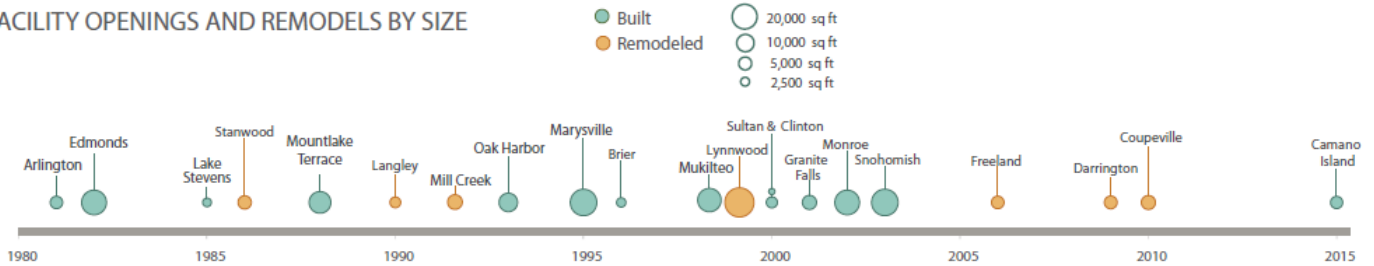




## APPENDIX E

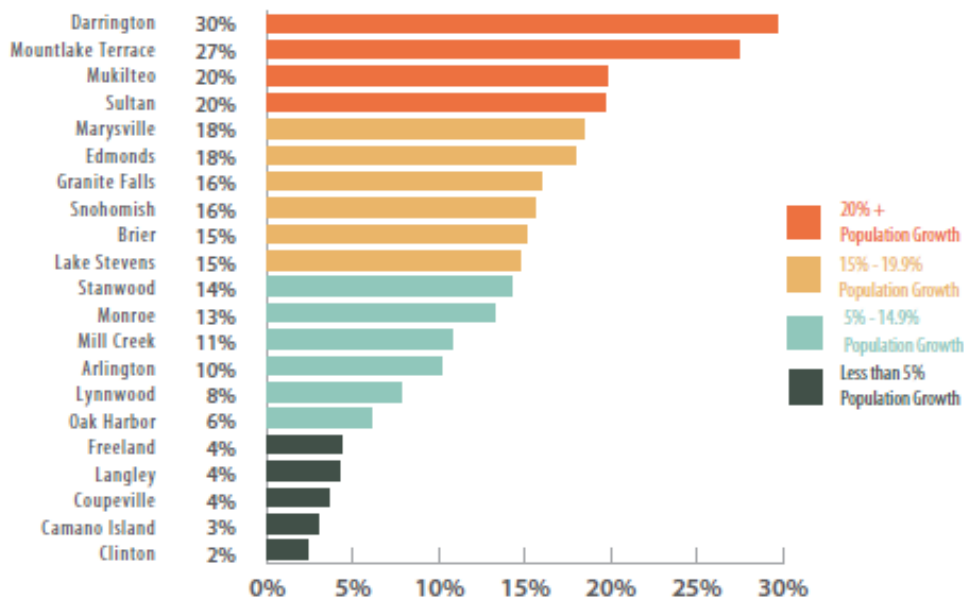
### Sno-Isle Libraries library comparative data

FACILITY OPENINGS AND REMODELS BY SIZE



### POPULATION GROWTH BETWEEN 2015 - 2025

from Library Geographic Region



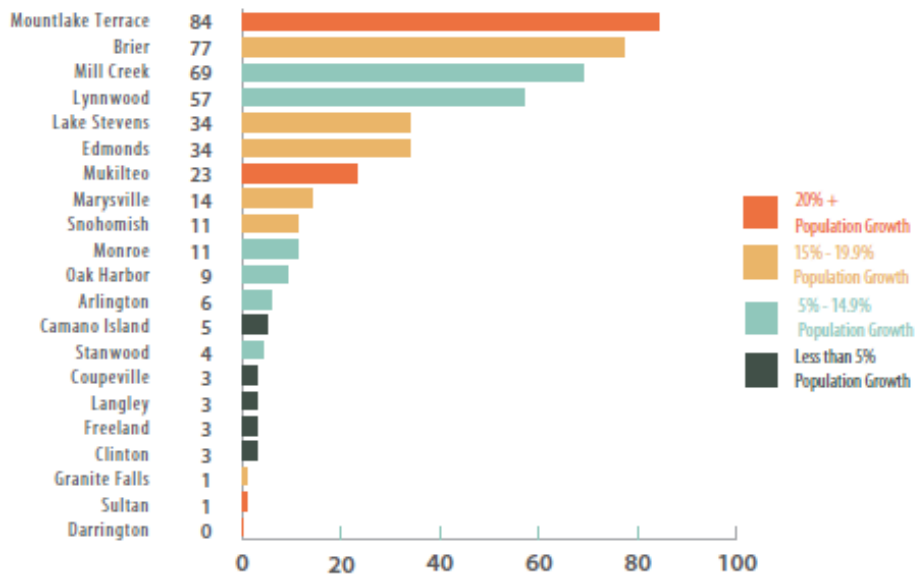
The change in population is derived from CAI and PSRC population forecasts within the Library Geographic Region. The Library Geographic Region is defined by assigning each person living within the Sno-Isle district to a community library, using data provided by the U.S. Census Bureau, based on whichever library is closest.

All charts and graphics produced by EnviroIssues and Community Attributes, Inc. (CAI) based on library district data, customer use and US Census Bureau data.

PSRC population forecasts are prepared by the Puget Sound Regional Council.

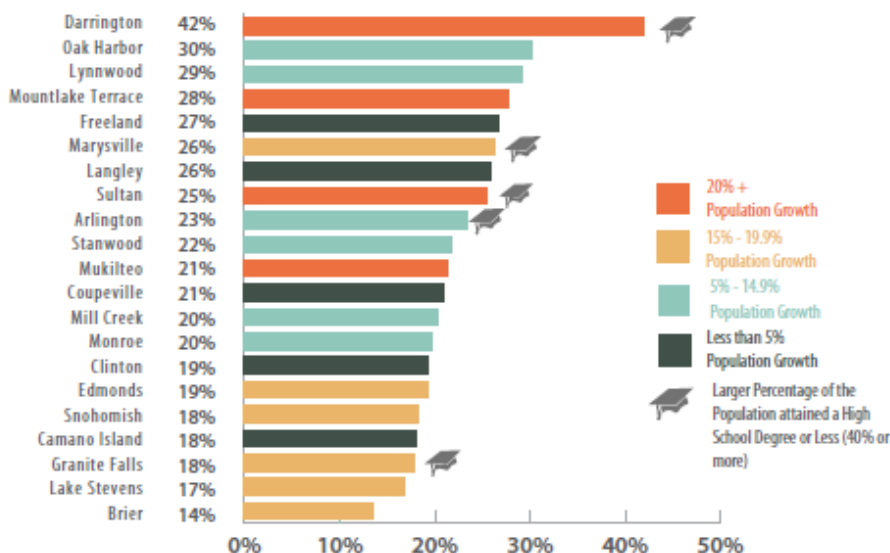
# POPULATION DENSITY | 2025

Person Per 10 Acres from Library Geographic Region



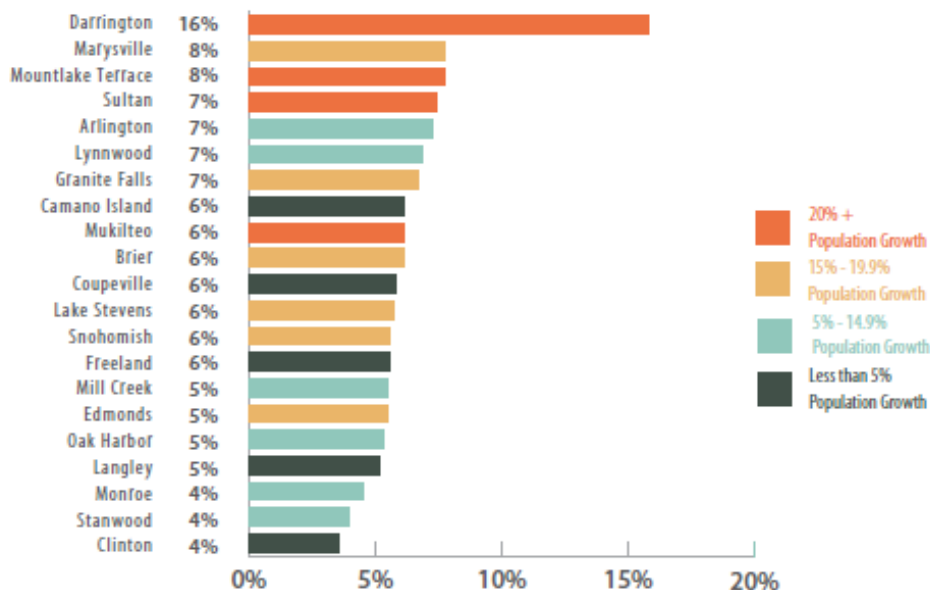
Population Density is the number of people living in the Library Geographic Region divided by the acreage of that region. On average the Library Geographic Region accounts for 64% of the community library's customers.

## PERCENTAGE OF THE POPULATION AT OR BELOW \*200% OF THE POVERTY LINE | 2013



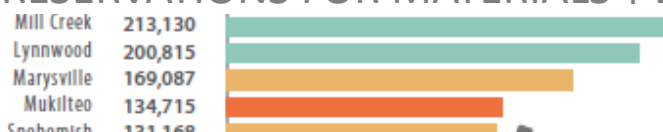
At or below 200% of the federal poverty line translates to people with annual incomes of approximately \$23,300 or below for a one-person household and \$31,500 or below for a two-person household. People in poverty may be more likely to rely on the public library for access to computers and the Internet.

## UNEMPLOYMENT RATE | 2013

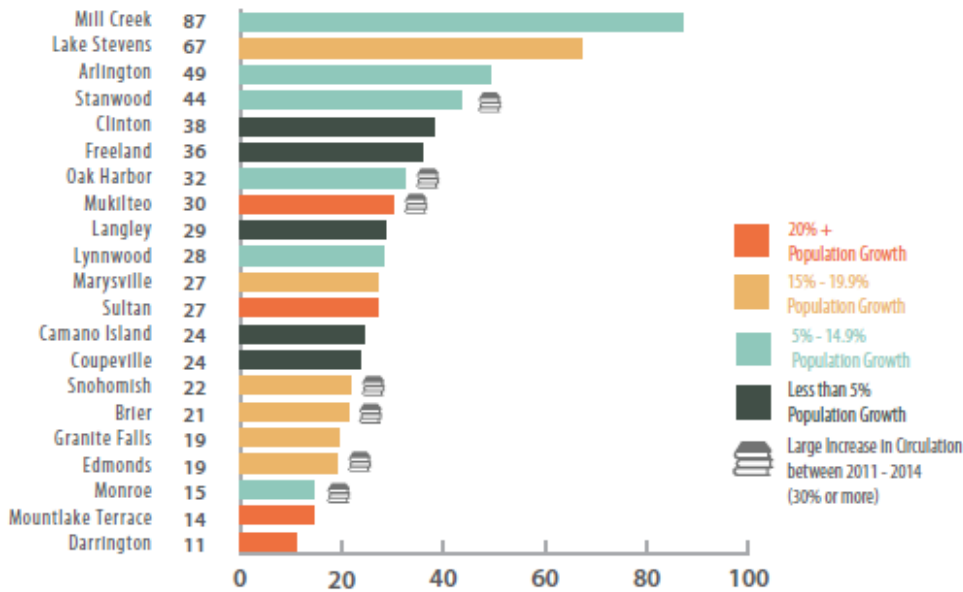


The unemployment rate is the percent of the population that is 16 years old and over and does not have a job. The unemployment rate is a measure of high need populations that could benefit from additional library services or programs.

## RESERVATIONS FOR MATERIALS | 2014

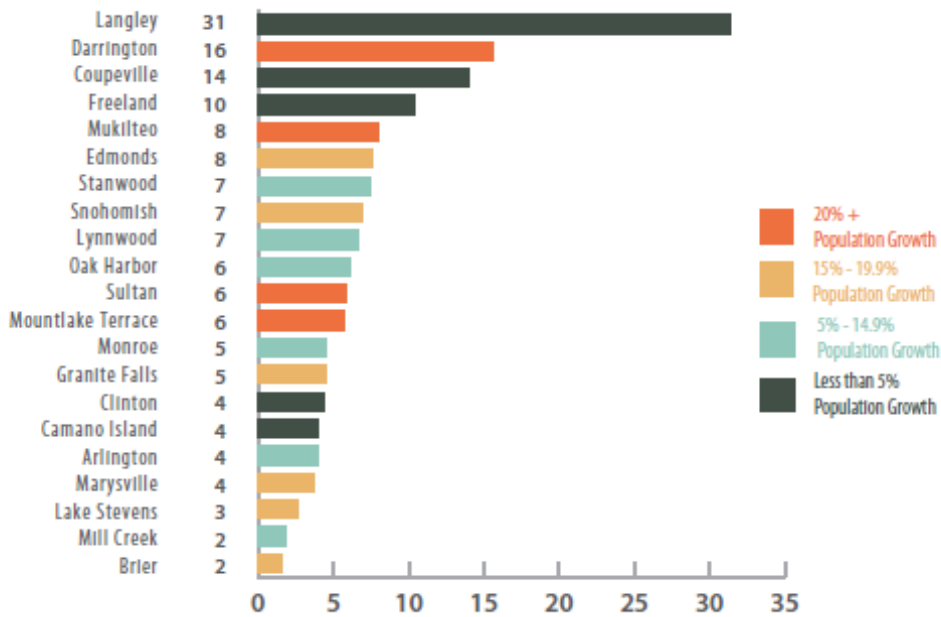


## CIRCULATION PER SQUARE FOOT | 2014



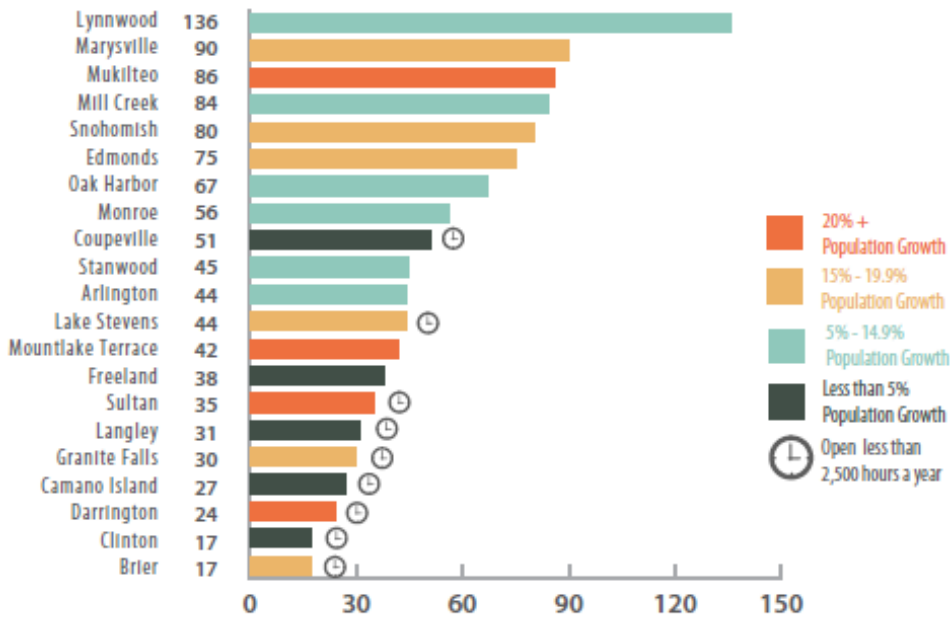
Analyzing how often customers reserve materials (place holds) can help illustrate how much demand there is at a particular library. The more holds there are, the longer the wait time may be for customers to get access to desired library materials.

## VISITS PER CAPITA | 2014



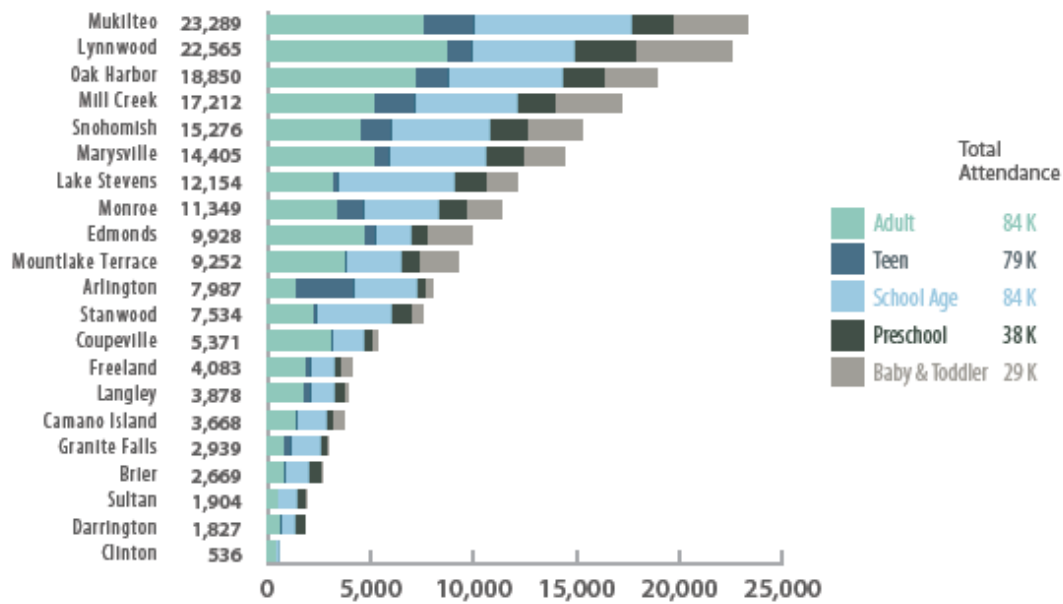
Visits per Capita is the number of annual library visits divided by the number of persons within the library's geographic region. Visits per Capita is a good measure of public awareness and library use.

## VISITS PER HOUR LIBRARY IS OPEN | 2014



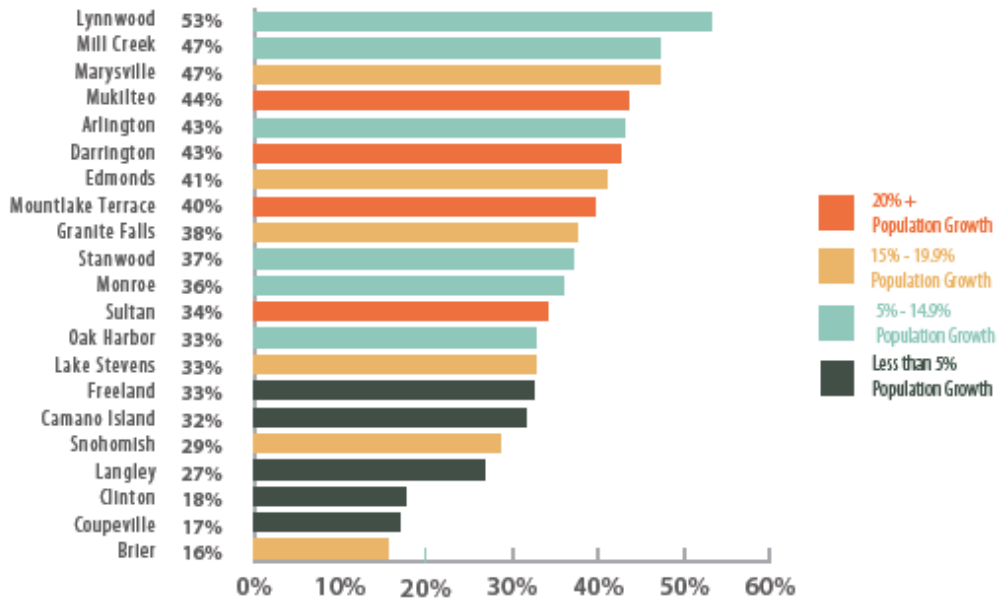
Visits per Hour a Library is Open is a measure of the annual number of visits divided by the number of hours a library is open a year and is a good indicator of over used facilities that could benefit from extended hours. A visit is defined by door counts; if someone enters the library, they are counted as a visit, whether or not they check out any items.

## ATTENDANCE BY PROGRAM TYPE | 2014



Each community library offers different programs that are free to the public. This chart shows Mukilteo, Lynnwood, Mill Creek and Oak Harbor community libraries have relatively larger program attendance among libraries in the district. Programs for adults and school-age children seem to be driving attendance.

# TIME COMPUTERS IN USE | 2014

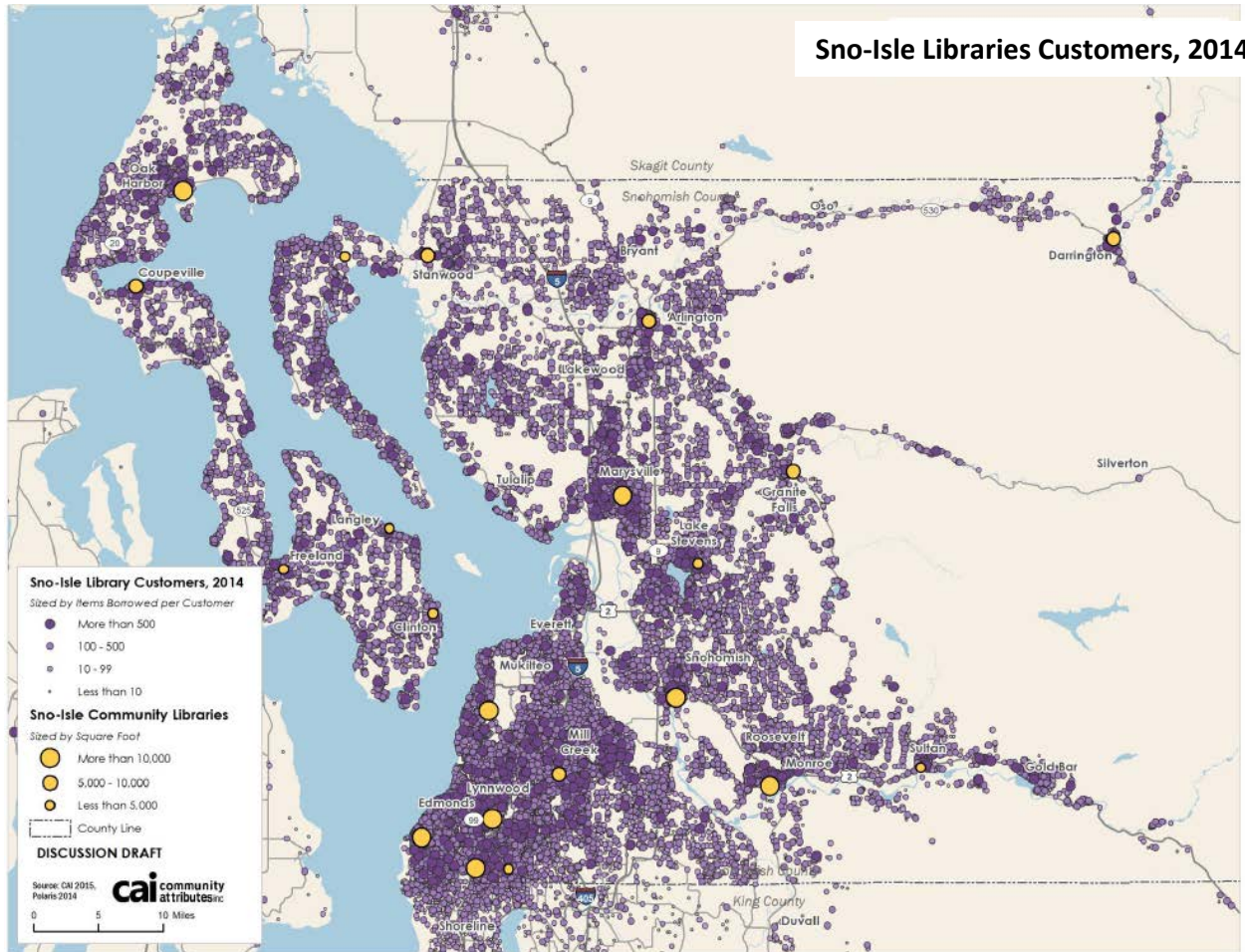


The time a computer is in use tells a bigger story than just how many computers a library has. A higher percentage of computer time used, like at the Lynnwood and Mill Creek community libraries, means more people are likely waiting for an open computer.

## APPENDIX F

### Customer borrowing patterns

This map highlights patterns of community library use by showing items borrowed per customer. Each purple dot represents the home address of a Sno-Isle Libraries customer in 2014. The purple dots increase in size with number of items that individual checked out. Yellow dots represent current facility locations.



## APPENDIX G

### Planned Maintenance Schedule for Facilities Owned by Sno-Isle Libraries

	Electrical	Roof	Exterior	Flooring / Carpet	Mechanical	Parking Lot (reseal, restripe)
Camano Island				2025		2019, 2023
Clinton		2017	2017	2021		
Coupeville	2019 (LED); 2020		2025	2022	2019 & 2021	2019, 2023
Freeland	2025 (replace LED bulbs installed in 2015)		2020, 2025	2019	2022	2019, 2023
Granite Falls	2019 (LED)				2017, 2018, 2019, 2020	2017, 2021, 2025
Marysville	2025 (replace LED bulbs installed in 2015)		2017; 2025	2017	2019 & 2024	2019, 2023
Monroe	2018 (LED)	2017	2021; 2023		2021	2019, 2023
Mukilteo	2019 (LED)		2018; 2023	2020	2018	2019, 2023
Snohomish	2016 & 2017 (LED fixtures)	2023	2023; 2023	2016	2018; 2023	2019, 2023
Service Center	2016-2018 (LED); 2020, 2025		2018; 2024	2017-2018	2016 ; 2021; 2019-2022	2017, 2021, 2025
<p>This chart represents planned projects at library buildings owned by the library district. The timeline is based on the expected lifetime of existing equipment</p>						
<p>Electrical includes replacing light fixtures and bulbs with LED</p>						
<p>Exterior includes painting; cleaning &amp; sealing masonry; repairing/replacing siding; etc.</p>						
<p>Mechanical includes replacing components related to Heating, Ventilating and Air Conditioning systems</p>						
<p>Prepared by Brian Rush, Facilities Manager, April 2016</p>						



## APPENDIX H

### Use and Community Response Data by Library

#### 128th Street/Mariner Area

##### By the numbers

This is a new area of opportunity for a future library facility. Customer activity data for residents in the 128<sup>th</sup> Street/Mariner area is captured in customer use tables for libraries in neighboring communities.

##### Community Response

###### Phase 1

Any comments received from the 128<sup>th</sup> Street/Mariner community were grouped with the Mill Creek area in Phase 1 community outreach and engagement. Library officials subsequently noted a significant lack of participants from this community in the online open house survey. Additional efforts were launched to engage and secure community input on library facility needs through partnership with the Mukilteo School District.

###### Phase 2

Online survey	<b>Question: Do you agree with the recommendation to establish a pilot library demonstration project?</b> (Percentages of 229 responses)	
	Strongly agree	81.2%
	Agree	16.2%
	Disagree	1.3%
	Strongly disagree	1.3%

Online Survey to Mariner/128th Street community	<b>Question: What do you think of the idea of a library building providing service in the Mariner area?</b> (Percentages of 309 responses)	
	Strongly like the idea	90.60%
	Like	8.70%
	Dislike	0.00%
	Strongly dislike the idea	0.00%
	Non opinion/Don't know	0.60%

## Arlington Community Library

### By the numbers

The table below reflects a data snapshot for the Arlington Library. The table includes comparative numbers for the entire library district.

		Arlington	Library district range
Library use	2014 borrowing/square foot	49	11-87
	2014 program attendance	7,987	536-23,289
	2014 visits/hour library open	44	17-136
Library access	Average # miles customers in 2014 traveled to the library	5.1	2.1-7.3
	Percent of 2014 customers living more than 5 miles away	30%	8-58%
	Percent of population below 200% of the Poverty Line	23%	14-42%
Population growth	2013 City of Arlington population	18,664	928 - 63,269
	2015 Library Geographic Region* population	28,532	2,519 - 164,733
	2015 population/square foot of library	5.6	0.6-22.3
	2025 Library Geographic Region* population	31,385	2,620 - 182,853
	2025 population/square foot	6.2	0.7-24.7
	Population growth between 2015-2025	10%	2-30%
	2025 population density (people/10 acres)	6	0-84

*\*Sno-Isle Libraries used Census Block Groups to define the Library Geographic Region for Arlington. Census Block Groups are a geographical unit used by the United States Census Bureau. They are the smallest geographical unit for which the Bureau publishes Census data and generally contain between 600 and 3,000 people. The Arlington Library Geographic Regions include all Census Block Groups in the library district whose center points are closer to the Arlington Library than any other library in the library district. These defined areas were used to assess library access and population growth.*

### Community Response

#### Phase 1

Online survey	Question: Does your community need a new or improved library? (Percentages of 44 responses)	
	Yes, build new	61.4%
	Yes, renovate	25%
	No	13.6%

#### Phase 2

Online survey	Question: Do you agree with the recommendation to renovate the Arlington Library. (Percentages of 395 responses)	
	Strongly agree	56.2%
	Agree	22.3%
	Disagree	10.4%
	Strongly disagree	11.1%

## Brier Community Library

### By the numbers

The table below reflects a data snapshot for the Brier Library. The table includes comparative numbers for the entire library district.

		Brier	Library district range
Library use	2014 borrowing/square foot	21	11-87
	2014 program attendance	2,669	536-23,289
	2014 visits/hour library open	17	17-136
Library access	Average # miles customers in 2014 traveled to the library	2.1	2.1-7.3
	Percent of 2014 customers living more than 5 miles away	8%	8-58%
	Percent of population below 200% of the Poverty Line	14%	14-42%
Population growth	2013 City of Brier population	6,358	928 - 63,269
	2015 Library Geographic Region* population	33,205	2,519 - 164,733
	2015 population/square foot of library	11.7	0.6-22.3
	2025 Library Geographic Region* population	38,185	2,620 - 182,853
	2025 population/square foot	13.4	0.7-24.7
	Population growth between 2015-2025	15%	2-30%
	2025 population density (people/10 acres)	77	0-84

*\*Sno-Isle Libraries used Census Block Groups to define the Library Geographic Region for Brier. Census Block Groups are a geographical unit used by the United States Census Bureau. They are the smallest geographical unit for which the Bureau publishes Census data and generally contain between 600 and 3,000 people. The Brier Library Geographic Region includes all Census Block Groups in the library district whose center points are closer to the Brier Library than any other library in the library district. While there are 30,000 people living in the Library Geographic Region, the Brier Library is focused serving the smaller community of Brier.*

### Community Response

#### Phase 1

Online survey	Question: Does your community need a new or improved library? (Percentages of 12 responses)	
	Yes, build new	0%
	Yes, renovate	16.7%
	No	83.3%

#### Phase 2

Online survey	Question: Do you agree with the recommendation to maintain the current facility? (Percentages of 35 responses)	
	Strongly agree	54.3%
	Agree	42.9%
	Disagree	0%
	Strongly disagree	2.9%

## Camano Island Community Library

### By the numbers

The table below reflects a data snapshot for the Camano Island Library. The table includes comparative numbers for the entire library district.

		Camano Island	Library district range
Library user	2014 borrowing/square foot	24	11-87
	2014 program attendance	3,668	536-23,289
	2014 visits/hour library open	27	17-136
Library access	Average # miles customers in 2014 traveled to the library	6.2	2.1-7.3
	Percent of 2014 customers living more than 5 miles away	50%	8-58%
	Percent of population below 200% of the Poverty Line	18%	14-42%
Population growth	2013 Camano Island population	13,358	928 - 63,269
	2015 Library Geographic Region* population	16,194	2,519 - 164,733
	2015 population/square foot of library	3.3	0.6-22.3
	2025 Library Geographic Region* population	16,680	2,620 - 182,853
	2025 population/square foot	3.4	0.7-24.7
	Population growth between 2015-2025	3%	2-30%
	2025 population density (people/10 acres)	5	0-84

*\*Sno-Isle Libraries used Census Block Groups to define the Library Geographic Region for Camano Island. Census Block Groups are a geographical unit used by the United States Census Bureau. They are the smallest geographical unit for which the Bureau publishes Census data and generally contain between 600 and 3,000 people. The Camano Island Library Geographic Region includes all Census Block Groups in the library district whose center points are closer to the Camano Island Library than any other library in the library district. This defined area was used to assess library access and population growth. \*\*Statistics prior to the current library opening*

### Community Response

#### Phase 1

Online survey	Question: Does your community need a new or improved library? (Percentages of 29 responses)	
	Yes, build new	5.7%
	Yes, renovate	11.4%
	No	82.9%

#### Phase 2

Online survey	Question: Do you agree with the recommendation to maintain the current facility? (Percentages of 50 responses)	
	Strongly agree	64%
	Agree	26%
	Disagree	6%
	Strongly disagree	4.0%

## Clinton Community Library

### By the numbers

The table below reflects a data snapshot for the Clinton Library. The table includes comparative numbers for the entire library district.

		Clinton	Library district range
Library use	2014 borrowing/square foot	38	11-87
	2014 program attendance	536	536-23,289
	2014 visits/hour library open	17	17-136
Library access	Average # miles customers in 2014 traveled to the library	4.8	2.1-7.3
	Percent of 2014 customers living more than 5 miles away	24%	8-58%
	Percent of population below 200% of the Poverty Line	19%	14-42%
Population growth	2013 Clinton area population	928	928 - 63,269
	2015 Library Geographic Region* population	6,314	2,519 - 164,733
	2015 population/square foot of library	4.9	0.6-22.3
	2025 Library Geographic Region* population	6,440	2,620 - 182,853
	2025 population/square foot	5.0	0.7-24.7
	Population growth between 2015-2025	2%	2-30%
	2025 population density (people/10 acres)	3	0-84

*\*Sno-Isle Libraries used Census Block Groups to define the Library Geographic Region for Clinton. Census Block Groups are a geographical unit used by the United States Census Bureau. They are the smallest geographical unit for which the Bureau publishes Census data and generally contain between 600 and 3,000 people. The Clinton Library Geographic Regions include all Census Block Groups in the library district whose center points are closer to the Clinton Library than any other library in the library district. These defined areas were used to assess library access and population growth.*

### Community Response

#### Phase 1

Online survey	Question: Does your community need a new or improved library? (Percentages of 16 responses)	
	Yes, build new	31.3%
	Yes, renovate	56.3%
	No	12.5%

#### Phase 2

Online survey	Question: Do you agree with the recommendation to maintain the current facility? (Percentages of 30 responses)	
	Strongly agree	20%
	Agree	40%
	Disagree	20%
	Strongly disagree	20%

## Coupeville Community Library

### By the numbers

The table below reflects a data snapshot for the Coupeville Library. The table includes comparative numbers for the entire library district.

		Coupeville	Library district range
Library use	2014 borrowing/square foot	24	11-87
	2014 program attendance	5,371	536-23,289
	2014 visits/hour library open	51	17-136
Library access	Average # miles customers in 2014 traveled to the library	7	2.1-7.3
	Percent of 2014 customers living more than 5 miles away	41%	8-58%
	Percent of population below 200% of the Poverty Line	21%	14-42%
Population growth	2013 Town of Coupeville population	1,849	928 - 63,269
	2015 Library Geographic Region* population	9,115	2,519 - 164,733
	2015 population/square foot of library	1.5	0.6-22.3
	2025 Library Geographic Region* population	9,480	2,620 - 182,853
	2025 population/square foot	1.6	0.7-24.7
	Population growth between 2015-2025	4%	2-30%
	2025 population density (people/10 acres)	3	0-84

*\*Sno-Isle Libraries used Census Block Groups to define the Library Geographic Region for Coupeville. Census Block Groups are a geographical unit used by the United States Census Bureau. They are the smallest geographical unit for which the Bureau publishes Census data and generally contain between 600 and 3,000 people. The Coupeville Library Geographic Region includes all Census Block Groups in the library district whose center points are closer to the Coupeville Library than any other library in the library district. This defined area was used to assess library access and population growth.*

### Community Response

#### Phase 1

Online survey	Question: Does your community need a new or improved library? (Percentages of 37 responses)	
	Yes, build new	5.4%
	Yes, renovate	13.5%
	No	81.1%

#### Phase 2

Online survey	Question: Do you agree with the recommendation to maintain the current facility? (Percentages of 29 responses)	
	Strongly agree	72.4%
	Agree	20.7%
	Disagree	3.4%
	Strongly disagree	3.4%

## Darrington Community Library

### By the numbers

The table below reflects a data snapshot for the Darrington Library. The table includes comparative numbers for the entire library district.

		Darrington	Library district range
Library use	2014 borrowing/square foot	11	11-87
	2014 program attendance	1,827	536-23,289
	2014 visits/hour library open	24	17-136
Library access	Average # miles customers in 2014 traveled to the library	7.3	2.1-7.3
	Percent of 2014 customers living more than 5 miles away	34%	8-58%
	Percent of population below 200% of the Poverty Line	42%	14-42%
Population growth	2013 Town of Darrington population	1,362	928 - 63,269
	2015 Library Geographic Region* population	3,221	2,519 - 164,733
	2015 population/square foot of library	0.6	0.6-22.3
	2025 Library Geographic Region* population	4,187	2,620 - 182,853
	2025 population/square foot	0.8	0.7-24.7
	Population growth between 2015-2025	30%	2-30%
	2025 population density (people/10 acres)	<1	0-84

*\*Sno-Isle Libraries used Census Block Groups to define the Library Geographic Region for Darrington. Census Block Groups are a geographical unit used by the United States Census Bureau. They are the smallest geographical unit for which the Bureau publishes Census data and generally contain between 600 and 3,000 people. The Darrington Library Geographic Region includes all Census Block Groups in the library district whose center points are closer to the Darrington Library than any other library in the library district. This defined area was used to assess library access and population growth.*

### Community Response

#### Phase 1

Online survey	Question: Does your community need a new or improved library? (Percentages of 8 responses)	
	Yes, build new	0%
	Yes, renovate	0%
	No	100%

#### Phase 2

Online survey	Question: Do you agree with the recommendation to maintain the current facility? (Percentages of 6 responses)	
	Strongly agree	66.7%
	Agree	33.3%
	Disagree	0%
	Strongly disagree	0%





## Edmonds Community Library

### By the numbers

The table below reflects a data snapshot for the Edmonds Library. The table includes comparative numbers for the entire library district.

		Edmonds	Library district range
Library use	2014 borrowing/square foot	19	11-87
	2014 program attendance	9,928	536-23,289
	2014 visits/hour library open	75	17-136
Library access	Average # miles customers in 2014 traveled to the library	3	2.1-7.3
	Percent of 2014 customers living more than 5 miles away	13%	8-58%
	Percent of population below 200% of the Poverty Line	19%	14-42%
Population growth	2013 City of Edmonds population	40,727	928 - 63,269
	2015 Library Geographic Region* population	38,878	2,519 - 164,733
	2015 population/square foot of library	1.9	0.6-22.3
	2025 Library Geographic Region* population	45,876	2,620 - 182,853
	2025 population/square foot	2.3	0.7-24.7
	Population growth between 2015-2025	18%	2-30%
	2025 population density (people/10 acres)	34	0-84

*\*Sno-Isle Libraries used Census Block Groups to define the Library Geographic Region for Edmonds. Census Block Groups are a geographical unit used by the United States Census Bureau. They are the smallest geographical unit for which the Bureau publishes Census data and generally contain between 600 and 3,000 people. The Edmonds Library Geographic Region includes all Census Block Groups in the library district whose center points are closer to the Edmonds Library than any other library in the library district. This defined area was used to assess library access and population growth.*

### Community Response

#### Phase 1

Online survey	Question: Does your community need a new or improved library? (Percentages of 100 responses)	
	Yes, build new	3%
	Yes, renovate	32%
	No	65%

#### Phase 2

Online survey	Question: Do you agree with the recommendation to maintain the current facility? (Percentages of 137 responses)	
	Strongly agree	52.6%
	Agree	44.5%
	Disagree	1.5%
	Strongly disagree	1.5%

## Freeland Community Library

### By the numbers

The table below reflects a data snapshot for the Freeland Library. The table includes comparative numbers for the entire library district.

		Freeland	Library district range
Library use	2014 borrowing/square foot	36	11-87
	2014 program attendance	4,083	536-23,289
	2014 visits/hour library open	38	17-136
Library access	Average # miles customers in 2014 traveled to the library	5.7	2.1-7.3
	Percent of 2014 customers living more than 5 miles away	47%	8-58%
	Percent of population below 200% of the Poverty Line	27%	14-42%
Population growth	2013 Freeland area population	2,045	928 - 63,269
	2015 Library Geographic Region* population	10,106	2,519 - 164,733
	2015 population/square foot of library	2.1	0.6-22.3
	2025 Library Geographic Region* population	10,510	2,620 - 182,853
	2025 population/square foot	2.2	0.7-24.7
	Population growth between 2015-2025	4%	2-30%
	2025 population density (people/10 acres)	3	0-84

*\*Sno-Isle Libraries used Census Block Groups to define the Library Geographic Region for Freeland. Census Block Groups are a geographical unit used by the United States Census Bureau. They are the smallest geographical unit for which the Bureau publishes Census data and generally contain between 600 and 3,000 people. The Freeland Library Geographic Regions include all Census Block Groups in the Library District whose center points are closer to the Freeland Library than any other library in the Library District. These defined areas were used to assess library access and population growth..*

### Community Response

#### Phase 1

Online survey	Question: Does your community need a new or improved library? (Percentages of 42 responses)	
	Yes, build new	11.9%
	Yes, renovate	21.45
	No	66.7%

#### Phase 2

Online survey	Question: Do you agree with the recommendation to maintain the current facility? (Percentages of 46 responses)	
	Strongly agree	50%
	Agree	41.3%
	Disagree	6.5%
	Strongly disagree	2.2%

## Granite Falls Community Library

### By the numbers

The table below reflects a data snapshot for the Granite Falls Library. The table includes comparative numbers for the entire library district.

		Granite Falls	Library district range
Library use	2014 borrowing/square foot	19	11-87
	2014 program attendance	2,939	536-23,289
	2014 visits/hour library open	30	17-136
Library access	Average # miles customers in 2014 traveled to the library	5	2.1-7.3
	Percent of 2014 customers living more than 5 miles away	29%	8-58%
	Percent of population below 200% of the Poverty Line	18%	14-42%
Population growth	2013 City of Granite Falls population	3,438	928 - 63,269
	2015 Library Geographic Region* population	25,001	2,519 - 164,733
	2015 population/square foot of library	3.8	0.6-22.3
	2025 Library Geographic Region* population	29,013	2,620 - 182,853
	2025 population/square foot	4.4	0.7-24.7
	Population growth between 2015-2025	16%	2-30%
	2025 population density (people/10 acres)	1	0-84

*\*Sno-Isle Libraries used Census Block Groups to define the Library Geographic Region for Granite Falls. Census Block Groups are a geographical unit used by the United States Census Bureau. They are the smallest geographical unit for which the Bureau publishes Census data and generally contain between 600 and 3,000 people. The Granite Falls Library Geographic Region includes all Census Block Groups in the library district whose center points are closer to the Granite Falls Library than any other library in the library district. This defined area was used to assess library access and population growth.*

## Community Response

### Phase 1

Online survey	Question: Does your community need a new or improved library? (Percentages of 10 responses)	
	Yes, build new	10%
	Yes, renovate	10%
	No	80%

### Phase 2

Online survey	Question: Do you agree with the recommendation to maintain the current facility? (Percentages of 23 responses)	
	Strongly agree	60.9%
	Agree	26.1%
	Disagree	4.3%
	Strongly disagree	8.7%

## Greater Mill Creek Area

### By the numbers

The table below reflects a data snapshot for the Mill Creek Library and includes customers from the 128<sup>th</sup> Street/Mariner and Greater Mill Creek communities. The table also includes comparative numbers for the entire library district.

		Mill Creek	Library district range
Library use	2014 borrowing/square foot	87	11-87
	2014 program attendance	17,212	536-23,289
	2014 visits/hour library open	84	17-136
Library access	Average # miles customers in 2014 traveled to the library	3.4	2.1-7.3
	Percent of 2014 customers living more than 5 miles away	12%	8-58%
	Percent of population below 200% of the Poverty Line	20%	14-42%
Population growth	2013 Greater Mill Creek area population	18,828	928 - 63,269
	2015 Library Geographic Region* population	164,733	2,519 - 164,733
	2015 population/square foot of library	22.3	0.6-22.3
	2025 Library Geographic Region* population	182,853	2,620 - 182,853
	2025 population/square foot	24.7	0.7-24.7
	Population growth between 2015-2025	11%	2-30%
	2025 population density (people/10 acres)	69	0-84

*\*Sno-Isle Libraries used Census Block Groups to define the Library Geographic Region for Mill Creek. Census Block Groups are a geographical unit used by the United States Census Bureau. They are the smallest geographical unit for which the Bureau publishes Census data and generally contain between 600 and 3,000 people. The Mill Creek Library Geographic Region includes all Census Block Groups in the library district whose center points are closer to the Mill Creek Library than any other library in the library district. This defined area was used to assess library access and population growth.*

### Community Response

#### Phase 1

Online survey	Question: Does your community need a new or improved library? (Percentages of 198 responses)	
	Yes, build new	55.6%
	Yes, renovate	29.3%
	No	15.2%

*Any comments received from the Greater Mill Creek community were grouped with the Mill Creek Library area in Phase 1 community outreach and engagement.*

#### Phase 2

Online survey	Question: Do you agree with the recommendation to locate a new library in the greater Mill Creek area? (Percentages of 572 responses)	
	Strongly agree	71.3%
	Agree	21.3%
	Disagree	3.3%

Strongly disagree	4%
-------------------	----

## Lake Stevens Community Library

### By the numbers

The table below reflects a data snapshot for the Lake Stevens Library. The table includes comparative numbers for the entire library district.

		Lake Stevens	Library district range
Library use	2014 borrowing/square foot	67	11-87
	2014 program attendance	12,154	536-23,289
	2014 visits/hour library open	44	17-136
Library access	Average # miles customers in 2014 traveled to the library	3.3	2.1-7.3
	Percent of 2014 customers living more than 5 miles away	17%	8-58%
	Percent of population below 200% of the Poverty Line	17%	14-42%
Population growth	2013 City of Lake Stevens population	29,949	928 - 63,269
	2015 Library Geographic Region* population	41,490	2,519 - 164,733
	2015 population/square foot of library	16.6	0.6-22.3
	2025 Library Geographic Region* population	47,713	2,620 - 182,853
	2025 population/square foot	19.1	0.7-24.7
	Population growth between 2015-2025	15%	2-30%
	2025 population density (people/10 acres)	34	0-84

*\*Sno-Isle Libraries used Census Block Groups to define the Library Geographic Region for Lake Stevens. Census Block Groups are a geographical unit used by the United States Census Bureau. They are the smallest geographical unit for which the Bureau publishes Census data and generally contain between 600 and 3,000 people. The Lake Stevens Library Geographic Region includes all Census Block Groups in the library district whose center points are closer to the Lake Stevens Library than any other library in the library district. This defined area was used to assess library access and population growth.*

## Community Response

### Phase 1

Online survey	Question: Does your community need a new or improved library? (Percentages of 43 responses)	
	Yes, build new	67.4%
	Yes, renovate	25.6%
	No	7%

### Phase 2

Online survey	Question: Do you agree with the recommendation to replace the Lake Stevens Library with a new, larger building? (Percentages of 307 responses)	
	Strongly agree	86.3%
	Agree	12.1%
	Disagree	0.7%

Strongly disagree	1%
-------------------	----

## Lakewood/Smokey Point Area

### By the numbers

This is a new area of opportunity for a future library facility. Customer use data for residents in this area is captured in customer use tables for the Arlington Library and libraries in neighboring communities. See page 12 and 73.

### Community Response

#### Phase 1

Any comments received from the Lakewood/Smokey Point community were grouped with the Arlington area responses in Phase 1 community outreach and engagement.

#### Phase 2

Online survey	Question: Do you agree with the recommendation to locate a new library in the Lakewood/Smokey Point area? (Percentages of 241 responses)	
	Strongly agree	75.9%
	Agree	15.4%
	Disagree	3.3%
	Strongly disagree	5.4%

## Langley Community Library

### By the numbers

The table below reflects a data snapshot for the Langley Library. The table includes comparative numbers for the entire library district.

		Langley	Library district range
Library use	2014 borrowing/square foot	29	11-87
	2014 program attendance	3,878	536-23,289
	2014 visits/hour library open	31	17-136
Library access	Average # miles customers in 2014 traveled to the library	5.7	2.1-7.3
	Percent of 2014 customers living more than 5 miles away	44%	8-58%
	Percent of population below 200% of the Poverty Line	26%	14-42%
Population growth	2013 City of Langley population	1,045	928 - 63,269
	2015 Library Geographic Region* population	2,519	2,519 - 164,733
	2015 population/square foot of library	0.7	0.6-22.3
	2025 Library Geographic Region* population	2,620	2,620 - 182,853
	2025 population/square foot	0.7	0.7-24.7
	Population growth between 2015-2025	4%	2-30%
	2025 population density (people/10 acres)	3	0-84

*\*Sno-Isle Libraries used Census Block Groups to define the Library Geographic Region for Langley. Census Block Groups are a geographical unit used by the United States Census Bureau. They are the smallest geographical unit for which the Bureau publishes Census data and generally contain between 600 and 3,000 people. The Langley Library Geographic Regions include all Census Block Groups in the Library District whose center points are closer to the Langley Library than any other library in the Library District. These defined areas were used to assess library access and population growth. This area is depicted by the yellow outline in Figure 1.*

### Community Response

#### Phase 1

Online survey	Question: Does your community need a new or improved library? (Percentages of 31 responses)	
	Yes, build new	12.9%
	Yes, renovate	45.2%
	No	41.9%

#### Phase 2

Online survey	Question: Do you agree with the recommendation to maintain the current facility? (Percentages of 40 responses)	
	Strongly agree	50%
	Agree	37.5%
	Disagree	5%
	Strongly disagree	7.5%

## Lynnwood Community Library

### By the numbers

The table below reflects a data snapshot for the Lynnwood Library. The table includes comparative numbers for the entire library district.

		Lynnwood	Library district range
Library use	2014 borrowing/square foot	28	11-87
	2014 program attendance	22,565	536-23,289
	2014 visits/hour library open	136	17-136
Library access	Average # miles customers in 2014 traveled to the library	3.7	2.1-7.3
	Percent of 2014 customers living more than 5 miles away	15%	8-58%
	Percent of population below 200% of the Poverty Line	29%	14-42%
Population growth	2013 City of Lynnwood population	36,485	928 - 63,269
	2015 Library Geographic Region* population	58,655	2,519 - 164,733
	2015 population/square foot of library	2.3	0.6-22.3
	2025 Library Geographic Region* population	63,347	2,620 - 182,853
	2025 population/square foot	2.4	0.7-24.7
	Population growth between 2015-2025	8%	2-30%
	2025 population density (people/10 acres)	57	0-84

*\*Sno-Isle Libraries used Census Block Groups to define the Library Geographic Region for Lynnwood. Census Block Groups are a geographical unit used by the United States Census Bureau. They are the smallest geographical unit for which the Bureau publishes Census data and generally contain between 600 and 3,000 people. The Lynnwood Library Geographic Region includes all Census Block Groups in the library district whose center points are closer to the Lynnwood Library than any other library in the library district. This defined area was used to assess library access and population growth.*

### Community Response

#### Phase 1

Online survey	Question: Does your community need a new or improved library? (Percentages of 77 responses)	
	Yes, build new	14.3%
	Yes, renovate	28.6%
	No	57.1%

#### Phase 2

Online survey	Question: Do you agree with the recommendation to maintain the current facility and work closely with the City of Lynnwood as plans evolve for a new civic center. (Percentages of 232 responses)	
	Strongly agree	51.7%
	Agree	42.2%
	Disagree	4.3%
	Strongly disagree	1.7%



## Marysville Community Library

### By the numbers

The table below reflects a data snapshot for the Marysville Library. The table includes comparative numbers for the entire library district.

		Marysville	Library district range
Library use	2014 borrowing/square foot	27	11-87
	2014 program attendance	14,405	536-23,289
	2014 visits/hour library open	90	17-136
Library access	Average # miles customers in 2014 traveled to the library	4.8	2.1-7.3
	Percent of 2014 customers living more than 5 miles away	33%	8-58%
	Percent of population below 200% of the Poverty Line	26%	14-42%
Population growth	2013 City of Marysville population	63,269	928 - 63,269
	2015 Library Geographic Region* population	78,061	2,519 - 164,733
	2015 population/square foot of library	3.4	0.6-22.3
	2025 Library Geographic Region* population	92,112	2,620 - 182,853
	2025 population/square foot	4.0	0.7-24.7
	Population growth between 2015-2025	18%	2-30%
	2025 population density (people/10 acres)	14	0-84

*\*Sno-Isle Libraries used Census Block Groups to define the Library Geographic Region for Marysville. Census Block Groups are a geographical unit used by the United States Census Bureau. They are the smallest geographical unit for which the Bureau publishes Census data and generally contain between 600 and 3,000 people. The Marysville Library Geographic Regions include all Census Block Groups in the library district whose center points are closer to the Marysville Library than any other library in the library district. These defined areas were used to assess library access and population growth.*

### Community Response

#### Phase 1

Online survey	Question: Does your community need a new or improved library? (Percentages of 93 responses)	
	Yes, build new	14%
	Yes, renovate	21.5%
	No	64.5%

#### Phase 2

Online survey	Question: Do you agree with the recommendation to maintain the current facility. (Percentages of responses)	
	Strongly agree	56.1%
	Agree	40.3%
	Disagree	2.2%
	Strongly disagree	1.4%

## Mill Creek Community Library

### By the numbers

The table below reflects a data snapshot for the Mill Creek Library and includes data from the 128<sup>th</sup> Street/Mariner and Greater Mill Creek communities. The table also includes library district numbers.

		Mill Creek	Library district range
Library use	2014 borrowing/square foot	87	11-87
	2014 program attendance	17,212	536-23,289
	2014 visits/hour library open	84	17-136
Library access	Average # miles customers in 2014 traveled to the library	3.4	2.1-7.3
	Percent of 2014 customers living more than 5 miles away	12%	8-58%
	Percent of population below 200% of the Poverty Line	20%	14-42%
Population growth	2013 City of Mill Creek population	18,828	928 - 63,269
	2015 Library Geographic Region* population	164,733	2,519 - 164,733
	2015 population/square foot of library	22.3	0.6-22.3
	2025 Library Geographic Region* population	182,853	2,620 - 182,853
	2025 population/square foot	24.7	0.7-24.7
	Population growth between 2015-2025	11%	2-30%
	2025 population density (people/10 acres)	69	0-84

*\*Sno-Isle Libraries used Census Block Groups to define the Library Geographic Region for Mill Creek. Census Block Groups are a geographical unit used by the United States Census Bureau. They are the smallest geographical unit for which the Bureau publishes Census data and generally contain between 600 and 3,000 people. The Mill Creek Library Geographic Region includes all Census Block Groups in the library district whose center points are closer to the Mill Creek Library than any other library in the library district. This defined area was used to assess library access and population growth.*

### Community Response

#### Phase 1

Online survey	Question: Does your community need a new or improved library? (Percentages of 198 responses)	
	Yes, build new	55.6%
	Yes, renovate	29.3%
	No	15.2%

Comments received from the 128<sup>th</sup> Street/Mariner community and Greater Mill Creek area were combined with the Mill Creek community in Phase 1 community outreach and engagement.

#### Phase 2

Online survey	Question: Do you agree with the recommendation to renovate the Mill Creek Library. (Percentages of 1,138 responses)	
	Strongly agree	56.2%
	Agree	26.1%
	Disagree	11.3%
	Strongly disagree	6.3%

## Monroe Community Library

### By the numbers

The table below reflects a data snapshot for the Monroe Library. The table includes comparative numbers for the entire library district.

		Monroe	Library district range
Library use	2014 borrowing/square foot	15	11-87
	2014 program attendance	11,349	536-23,289
	2014 visits/hour library open	56	17-136
Library access	Average # miles customers in 2014 traveled to the library	5.2	2.1-7.3
	Percent of 2014 customers living more than 5 miles away	36%	8-58%
	Percent of population below 200% of the Poverty Line	20%	14-42%
Population growth	2013 City of Monroe population	17,724	928 - 63,269
	2015 Library Geographic Region* population	36,622	2,519 - 164,733
	2015 population/square foot of library	1.8	0.6-22.3
	2025 Library Geographic Region* population	41,383	2,620 - 182,853
	2025 population/square foot	2.1	0.7-24.7
	Population growth between 2015-2025	13%	2-30%
	2025 population density (people/10 acres)	11	0-84

*\*Sno-Isle Libraries used Census Block Groups to define the Library Geographic Region for Monroe. Census Block Groups are a geographical unit used by the United States Census Bureau. They are the smallest geographical unit for which the Bureau publishes Census data and generally contain between 600 and 3,000 people. The Monroe Library Geographic Region includes all Census Block Groups in the library district whose center points are closer to the Monroe Library than any other library in the library district. This defined area was used to assess library access and population growth.*

### Community Response

#### Phase 1

Online survey	Question: Does your community need a new or improved library? (Percentages of 38 responses)	
	Yes, build new	2.6%
	Yes, renovate	21.1%
	No	76.3%

#### Phase 2

Online survey	Question: Do you agree with the recommendation to maintain the current facility? (Percentages of 62 responses)	
	Strongly agree	62.9%
	Agree	35.5%
	Disagree	1.6%
	Strongly disagree	0%

## Mountlake Terrace Community Library

### By the numbers

The table below reflects a data snapshot for the Mountlake Terrace Library. The table includes comparative numbers for the entire library district.

		Mountlake Terrace	Library district range
Library use	2014 borrowing/square foot	14	11-87
	2014 program attendance	9,252	536-23,289
	2014 visits/hour library open	42	17-136
Library access	Average # miles customers in 2014 traveled to the library	3.1	2.1-7.3
	Percent of 2014 customers living more than 5 miles away	15%	8-58%
	Percent of population below 200% of the Poverty Line	28%	14-42%
Population growth	2013 City of Mountlake Terrace population	20,674	928 - 63,269
	2015 Library Geographic Region* population	16,735	2,519 - 164,733
	2015 population/square foot of library	1.3	0.6-22.3
	2025 Library Geographic Region* population	21,253	2,620 - 182,853
	2025 population/square foot	1.7	0.7-24.7
	Population growth between 2015-2025	27%	2-30%
	2025 population density (people/10 acres)	84	0-84

*\*Sno-Isle Libraries used Census Block Groups to define the Library Geographic Region for Mountlake Terrace. Census Block Groups are a geographical unit used by the United States Census Bureau. They are the smallest geographical unit for which the Bureau publishes Census data and generally contain between 600 and 3,000 people. The Mountlake Terrace Library Geographic Region includes all Census Block Groups in the library district whose center points are closer to the Mountlake Terrace Library than any other library in the library district. This defined area was used to assess library access and population growth.*

### Community Response

#### Phase 1

Online survey	Question: Does your community need a new or improved library? (Percentages of 40 responses)	
	Yes, build new	5.0%
	Yes, renovate	27.5%
	No	67.5%

#### Phase 2

Online survey	Question: Do you agree with the recommendation to maintain the current facility? (Percentages of 56 responses)	
	Strongly agree	66.1%
	Agree	30.4%
	Disagree	3.6%
	Strongly disagree	0%

## Mukilteo Community Library

### By the numbers

The table below reflects a data snapshot for the Mukilteo Library. The table includes comparative numbers for the entire library district.

		Mukilteo	Library district range
Library use	2014 borrowing/square foot	30	11-87
	2014 program attendance	23,289	536-23,289
	2014 visits/hour library open	86	17-136
Library access	Average # miles customers in 2014 traveled to the library	3.5	2.1-7.3
	Percent of 2014 customers living more than 5 miles away	16%	8-58%
	Percent of population below 200% of the Poverty Line	21%	14-42%
Population growth	2013 City of Mukilteo population	20,860	928 - 63,269
	2015 Library Geographic Region* population	33,632	2,519 - 164,733
	2015 population/square foot of library	2.2	0.6-22.3
	2025 Library Geographic Region* population	40,358	2,620 - 182,853
	2025 population/square foot	2.7	0.7-24.7
	Population growth between 2015-2025	20%	2-30%
	2025 population density (people/10 acres)	23	0-84

*\*Sno-Isle Libraries used Census Block Groups to define the Library Geographic Region for Mukilteo. Census Block Groups are a geographical unit used by the United States Census Bureau. They are the smallest geographical unit for which the Bureau publishes Census data and generally contain between 600 and 3,000 people. The Mukilteo Library Geographic Region includes all Census Block Groups in the library district whose center points are closer to the Mukilteo Library than any other library in the library district. This defined area was used to assess library access and population growth.*

### Community Response

#### Phase 1

Online survey	Question: Does your community need a new or improved library? (Percentages of 55 responses)	
	Yes, build new	9.1%
	Yes, renovate	21.8%
	No	69.1%

#### Phase 2

Online survey	Question: Do you agree with the recommendation to maintain the current facility? (Percentages of 114 responses)	
	Strongly agree	49.1%
	Agree	41.2%
	Disagree	7%
	Strongly disagree	2.6%

## Oak Harbor Community Library

### By the numbers

The table below reflects a data snapshot for the Oak Harbor Library. The table includes comparative numbers for the entire library district.

		Oak Harbor	Library district range
Library use	2014 borrowing/square foot	32	11-87
	2014 program attendance	18,850	536-23,289
	2014 visits/hour library open	67	17-136
Library access	Average # miles customers in 2014 traveled to the library	4.3	2.1-7.3
	Percent of 2014 customers living more than 5 miles away	23%	8-58%
	Percent of population below 200% of the Poverty Line	30%	14-42%
Population growth	2013 City of Oak Harbor population	17,724	928 - 63,269
	2015 Library Geographic Region* population	36,377	2,519 - 164,733
	2015 population/square foot of library	3.2	0.6-22.3
	2025 Library Geographic Region* population	38,560	2,620 - 182,853
	2025 population/square foot	3.4	0.7-24.7
	Population growth between 2015-2025	6%	2-30%
	2025 population density (people/10 acres)	9	0-84

*\*Sno-Isle Libraries used Census Block Groups to define the Library Geographic Region for Oak Harbor. Census Block Groups are a geographical unit used by the United States Census Bureau. They are the smallest geographical unit for which the Bureau publishes Census data and generally contain between 600 and 3,000 people. The Oak Harbor Library Geographic Region includes all Census Block Groups in the library district whose center points are closer to the Oak Harbor Library than any other library in the library district. This defined area was used to assess library access and population growth.*

### Community Response

#### Phase 1

Online survey	Question: Does your community need a new or improved library? (Percentages of 54 responses)	
	Yes, build new	51.9%
	Yes, renovate	18.5%
	No	29.6%

#### Phase 2

Online survey	Question: Do you agree with the recommendation to maintain the current facility? (Percentages of 91 responses)	
	Strongly agree	33%
	Agree	44%
	Disagree	15.4%
	Strongly disagree	7.7%



## Snohomish Community Library

### By the numbers

The table below reflects a data snapshot for the Snohomish Library. The table includes comparative numbers for the entire library district.

		Snohomish	Library district range
Library use	2014 borrowing/square foot	22	11-87
	2014 program attendance	15,276	536-23,289
	2014 visits/hour library open	80	17-136
Library access	Average # miles customers in 2014 traveled to the library	5.2	2.1-7.3
	Percent of 2014 customers living more than 5 miles away	42%	8-58%
	Percent of population below 200% of the Poverty Line	18%	14-42%
Population growth	2013 City of Snohomish population	9,401	928 - 63,269
	2015 Library Geographic Region* population	45,010	2,519 - 164,733
	2015 population/square foot of library	2.0	0.6-22.3
	2025 Library Geographic Region* population	52,212	2,620 - 182,853
	2025 population/square foot	2.3	0.7-24.7
	Population growth between 2015-2025	11%	2-30%
	2025 population density (people/10 acres)	11	0-84

*\*Sno-Isle Libraries used Census Block Groups to define the Library Geographic Region for Snohomish. Census Block Groups are a geographical unit used by the United States Census Bureau. They are the smallest geographical unit for which the Bureau publishes Census data and generally contain between 600 and 3,000 people. The Snohomish Library Geographic Region includes all Census Block Groups in the library district whose center points are closer to the Snohomish Library than any other library in the library district. This defined area was used to assess library access and population growth.*

### Community Response

#### Phase 1

Online survey	Question: Does your community need a new or improved library? (Percentages of 76 responses)	
	Yes, build new	13.2%
	Yes, renovate	13.2%
	No	73.7%

#### Phase 2

Online survey	Question: Do you agree with the recommendation to maintain the current facility? (Percentages of 89 responses)	
	Strongly agree	71.9%
	Agree	24.7%
	Disagree	2.2%
	Strongly disagree	1.1%



## Stanwood Community Library

### By the numbers

The table below reflects a data snapshot for the Stanwood Library. The table includes comparative numbers for the entire library district.

		Stanwood	Library district range
Library use	2014 borrowing/square foot	44	11-87
	2014 program attendance	7,534	536-23,289
	2014 visits/hour library open	45	17-136
Library access	Average # miles customers in 2014 traveled to the library	6.7	2.1-7.3
	Percent of 2014 customers living more than 5 miles away	58%	8-58%
	Percent of population below 200% of the Poverty Line	22%	14-42%
Population growth	2013 City of Stanwood population	9,401	928 - 63,269
	2015 Library Geographic Region* population	20,842	2,519 - 164,733
	2015 population/square foot of library	3.9	0.6-22.3
	2025 Library Geographic Region* population	23,760	2,620 - 182,853
	2025 population/square foot	4.4	0.7-24.7
	Population growth between 2015-2025	14%	2-30%
	2025 population density (people/10 acres)	4	0-84

*\*Sno-Isle Libraries used Census Block Groups to define the Library Geographic Region for Stanwood. Census Block Groups are a geographical unit used by the United States Census Bureau. They are the smallest geographical unit for which the Bureau publishes Census data and generally contain between 600 and 3,000 people. The Stanwood Library Geographic Region includes all Census Block Groups in the library district whose center points are closer to the Stanwood Library than any other library in the library district. This defined area was used to assess library access and population growth.*

### Community Response

#### Phase 1

Online survey	Question: Does your community need a new or improved library? (Percentages of 70 responses)	
	Yes, build new	68.1%
	Yes, renovate	18.8%
	No	13%

#### Phase 2

Online survey	Question: Do you agree with the recommendation to replace the Stanwood Library with a new, larger building? (Percentages of 538 responses)	
	Strongly agree	65.6%
	Agree	22.5%
	Disagree	5.9%
	Strongly disagree	5.9%

## Sultan Community Library

### By the numbers

The table below reflects a data snapshot for the Sultan Library. The table includes comparative numbers for the entire library district.

		Sultan	Library district range
Library use	2014 borrowing/square foot	27	11-87
	2014 program attendance	1,904	536-23,289
	2014 visits/hour library open	35	17-136
Library access	Average # miles customers in 2014 traveled to the library	5.5	2.1-7.3
	Percent of 2014 customers living more than 5 miles away	42%	8-58%
	Percent of population below 200% of the Poverty Line	25%	14-42%
Population growth	2013 City of Sultan population	4,750	928 - 63,269
	2015 Library Geographic Region* population	20,231	2,519 - 164,733
	2015 population/square foot of library	5.1	0.6-22.3
	2025 Library Geographic Region* population	24,277	2,620 - 182,853
	2025 population/square foot	6.1	0.7-24.7
	Population growth between 2015-2025	20%	2-30%
	2025 population density (people/10 acres)	1	0-84

*\*Sno-Isle Libraries used Census Block Groups to define the Library Geographic Region for Sultan. Census Block Groups are a geographical unit used by the United States Census Bureau. They are the smallest geographical unit for which the Bureau publishes Census data and generally contain between 600 and 3,000 people. The Sultan Library Geographic Region includes all Census Block Groups in the library district whose center points are closer to the Sultan Library than any other library in the library district. This defined area was used to assess library access and population growth.*

### Community Response

#### Phase 1

Online survey	Question: Does your community need a new or improved library? (Percentages of 11 responses)	
	Yes, build new	27.3%
	Yes, renovate	36.4%
	No	36.4%

#### Phase 2

Online survey	Question: Do you agree with the recommendation to maintain the current facility? (Percentages of 30 responses)	
	Strongly agree	40%
	Agree	43.3%
	Disagree	16.7%
	Strongly disagree	0%