



# National Bureau of Statistics

## STATISTICAL

# BULLETIN

Catalogue Number: Population 2016/1

Released: 17<sup>th</sup> March 2016

### POPULATION AND VITAL STATISTICS

#### DECEMBER 2015

The population of Seychelles stood at 93,144 at December 2015, indicating a growth rate of 1.1% over 2014. A total of 1,592 births and 703 deaths were recorded. Of the 703 deaths, 17 were infant deaths and the infant mortality rate stood at 10.7 per thousand live births compared to 10.9 in 2014. The total fertility rate stands at 2.4 and the life expectancy is 74 years.

#### CONTENTS

1. Population change
2. Births and fertility
3. Deaths and life expectancy
4. Migration
5. Marriages
6. Divorces

#### TABLES

1. Mid-year population estimates, registered births and deaths, 1971-2015
2. Components of population change, 2002-2015
3. Registered live births by year, month of registration, sex and status, 2011-2015
- 4a. Births by birth order and by status and age group of mother, 2015
- 4b. Births by district of residence and age group of mother, 2015
5. Age specific fertility rates, 2000-2015
6. Deaths by age and sex, 2011-2015
- 7a. Deaths by sex and major cause of death for persons aged 5 and above, 2013-2015
- 7b. Deaths by sex and major cause of deaths for persons aged under 5, 2013-2015
8. Age and sex specific mortality rates, 2011-2015
9. Life expectancy at birth, 1980-2015
10. Age and sex distribution of migrants, 2015
- 11a. Registered marriages and divorces, 1987-2015
- 11b. Marriages by age of bride and groom, 2015 (residents and visitors)
- 11c. Marriages by age of bride and groom, 2015 (residents only)
- 12a. Marriages by age and previous marital status of bride, 2015 (residents only)
- 12b. Marriages by age and previous marital status of groom, 2015 (residents only)
13. Divorces by duration of marriage, 2001-2015

#### CHARTS

1. Births, deaths, migration 1976-2015
2. Infant deaths by sex 1976-2015
3. Births out of wedlock per 1000 live births, 1976-2015
4. Age specific fertility rates, 2014-2015
5. TFR for teenagers, 1998-2015
- 6a. Number of registered births and abortions, 2005-2015
- 6b. Percentage of births and abortions out of total registered births and abortions, 2005-2015

## National Bureau of Statistics

CARAVELLE HOUSE - MANGLIER STREET, P.O. BOX 206 - VICTORIA - MAHE - SEYCHELLES, Tel: +248 4611650 - Fax: +248 4225634/4225339  
 E-mail: ceo@nbs.gov.sc, stats@nbs.gov.sc - Website: www.nbs.gov.sc

"Your stepping-stone for informed decisions"

## END OF YEAR POPULATION 2015

### 1. POPULATION CHANGE

Table 1 shows the mid-year population estimates, vital events and rates for the period 1971-2015. The components of population change for the period 2002-2015 are shown in Table 2. The population is estimated at 93,144 persons as at 31<sup>st</sup> December 2015. This represents an increase of 1018 persons between January and December 2015 or an annual growth rate of 1.1% over 2014. If migration were discounted, the rate of natural increase (births less deaths) for the same period would be 1.0%.

### 2. BIRTHS & FERTILITY

There were 1592 births registered in 2015 compared to 1557 births in 2014. Of these 810 were registered in the first six months and 782 in the last six months of 2015. The crude birth rate which measures the number of births per thousand mid-year population was 17.0 in 2015 showing no change from 2014.

Table 3 provides information on the number of births by sex and status for the period 2011-2015 whilst Table 4a shows the number of births by birth order and by status and age group of mother for the year 2015 only. Table 4b shows births by district of residence and age group of mother for 2015.

Of the 1592 births registered in 2015, 359 (23%) occurred within marriage, 1004 (63%) were acknowledged and 229 (14%) were natural. The percentage of legitimate births has increased from 22% in 2014 to 23% in 2015. The percentage of natural births has decreased from 16% in 2014 to 14% in 2015 whilst that of acknowledged births has also increased from 62% in 2014 to 63% in 2015.

Table 4a shows that 188 (12%) of all births in 2015 occurred to women aged less than 20. This is at the same level as it was in 2014.

Table 4b shows that the districts with the highest number of births were English River

(153) Anse Etoile and Anse Aux Pins (82) each and Saint Louis (81).

Of the total number of births in each district, Baie Lazare and Les Mamelles recorded the highest percentage of births to teenagers (21%), followed by Grand Anse Mahe (18%).

Table 5 shows the age specific and total fertility rates for the period 1998 to 2015. The total number of children a woman is expected to have during her life has increased from 2.34 in 2014 to 2.41 in 2015.

Chart 5 shows the trend in teenage fertility from 1998-2015. Two versions of TFR are shown. One using actual births, and a simulation of what the TFR would look like if all pregnancies had ended up as live births.

The variation in the TFR for the age group 15-19 is noticeably large. Had those pregnancies not been terminated, the TFR would have peaked to above 90 births per thousand women in 2015 compared to 69 when abortions are discounted.

Chart 6 shows the percentage distribution of births and abortions from 2005-2015. The trend for the last 11 years shows that on average, abortion accounts for one quarter of potential<sup>(1)</sup> live births.

### 3. DEATHS

There were 703 deaths registered in 2015, of which 25 occurred to non-residents (Table 2). The crude death rate for the year was 7.5 per thousand mid-year population. (The number of deaths in Table 1 differs from that in Table 2 because deaths of persons who are not on the National Population Database (NPD) are excluded from the calculation of the population estimates in Table 2). Had the 25 deaths to non-residents been excluded then the crude death rate would decrease to 7.2. Table 8 provides details on age and sex specific mortality rates for the period 2010-2015.

The total number of infant deaths (death to babies aged less than one year) for 2015 was 17. The infant mortality rate is 10.7 per thousand live births compared to 10.9 in 2014.

Table 7 shows the major causes of death for the period 2010-2015. Diseases of the circulatory system was the leading cause of death contributing to (216 deaths), followed by neoplasm (150 deaths) and diseases of the respiratory system (81 deaths).

Table 9 shows life expectancy at birth by sex for the years 1980-2015. The number of years a male is expected to live is 70 years and that for female is 78 years.

#### 4. MIGRATION

The net migration figure of 104 persons for 2015 was composed of 285 males and -181 females (Table 10).

#### 5. MARRIAGES

There were 1845 marriages registered in 2015 of which 391 were by residents. Tables 11b and 11c show marriages by age of bride and groom for residents and visitors combined, and for residents only. Tables 12a and 12b show marriages by age and previous marital status of bride and groom respectively for residents only.

#### 6. DIVORCES

There were 149 divorces registered in 2015 (Table 11a). Table 13 shows divorces by duration of marriage for 2000-2015.

#### 7. CONCEPTS, SOURCES, METHODS AND DEFINITION

The end of year population estimates refers to the number of people in the population at 31st December each year, and the statistics are referred to as the end of year estimates. These estimates refer to the usual resident population which is based on the UN guidelines and are benchmarked to the results of the Population and Housing Census.

The end of year population estimates are updated by adding births and net migration and subtracting deaths. Explanatory notes are given below for each of the population components.

#### BIRTHS

Birth figures are obtained from the Civil Status office for all registered births. Births to non-Seychellois mothers are also included. There are 3 statuses of births, namely:

- (a) *Legitimate -Births occurring within marriage*
- (b) *Acknowledged-Births recognized by the father*
- (c) *Natural-Births not recognized by the father*

#### DEATHS

Death figures are obtained from the Civil Status office for all registered deaths. Deaths to non-residents and deaths to babies who have not been registered as a birth are excluded in the end of year estimates calculation.

#### MARRIAGES

Marriage figures are obtained from the Civil Status office for all registered marriages. Marriages to non residents are included.

#### DIVORCES

Divorce figures are obtained from the Civil Status office for all registered divorces.

#### MIGRATION

Migration is the geographic movement of people across a specified boundary for the purpose of establishing a new permanent or semi permanent residence. The terms "immigration" and "emigration" are used to refer to movement between countries (international migration). Data on Migration is collected from embarkation and disembarkation cards at the Immigration Division. Net migration is immigrants less emigrants.

#### 8. DEMOGRAPHIC DEFINITIONS

**Birth rate:** The birth rate (also called the crude birth rate) indicates the number of live births per 1,000 population in a given year.

**Death rate:** The death rate (also called the crude death rate) indicates the number of deaths per 1,000 population in a given year.

**Infant Mortality rate:** The number of deaths of infants under age 1 per 1,000 live births.

**Growth rate:** The growth rate is the rate at which a population is increasing (or decreasing) in a given year due to:

*(a) natural increase and (b) net migration*

It is expressed as a percentage of the base population, and takes into account all components of population growth: **Births, Deaths and Migration**

**Fertility rate:** The total fertility rate (TFR) is the average number of children that would be born to a woman by the time she ends childbearing years if she were to pass through all her childbearing years conforming to the age specific fertility rates of a given year. The TFR is one of the most useful indicators of fertility because it gives the best picture of how many children women are currently having. Fertility rates can also be calculated for specific age groups to see differences in fertility behavior or to make comparison over time.

**Age Specific Death Rate:** Death rates can be calculated for specific age groups in order to compare mortality at different ages or at the same age over time. Due to the sex and age variation in mortality, death rates are often presented separately for males and females.

**Life expectancy:** Life expectancy is an estimate of the average number of additional years a person is expected to live if the age specific death rates for a given year prevailed for the rest of his or her life.

## 9. NEXT RELEASE

The next release of the Population bulletin will be on **31<sup>st</sup> August 2016**.

## 10. CONTACT US

For more information regarding this publication please contact Mrs. Therese Gopal on Tel: (248) 4 611 666 or email [therese@nbs.gov.sc](mailto:therese@nbs.gov.sc)

---

***(1) If all registered abortions ended up as live births***

MID-YEAR POPULATION ESTIMATES, REGISTERED BIRTHS AND DEATHS, 1971-2015

Table 1

Year	Mid year Population	Births	Birth Rate <sup>(1)</sup>	Deaths	Death Rate <sup>(1)</sup>	Infant Deaths	Infant mortality rate <sup>(2)</sup>
1971	54695	1837	33.6	463	8.5	61	33.2
1972	56029	1723	30.8	529	9.4	62	36.0
1973	56892	1639	28.8	474	8.3	51	31.1
1974	57937	1860	32.1	496	8.6	73	39.2
1975	59292	1806	30.5	433	7.3	64	35.4
1976	60504	1642	27.1	466	7.7	53	32.3
1977	61786	1599	25.9	477	7.7	69	43.2
1978	62150	1796	28.9	466	7.5	47	26.2
1979	62686	1730	27.6	436	7.0	44	25.4
1980	63261	1830	28.9	444	7.0	32	17.5
1981	64035	1802	28.1	442	6.9	31	17.2
1982	64413	1552	24.1	482	7.5	30	19.3
1983	64335	1662	25.8	452	7.0	24	14.4
1984	64717	1739	26.9	487	7.5	24	13.8
1985	65244	1729	26.5	468	7.2	31	17.9
1986	65652	1722	26.2	498	7.6	31	18.0
1987 <sup>(3)</sup>	68499	1684	24.5	505	7.4	31	18.4
1988	68755	1643	23.8	504	7.3	28	17.0
1989	69167	1600	23.0	566	8.1	29	18.1
1990	69507	1617	23.1	543	7.7	21	13.0
1991 <sup>(4)</sup>	70439	1706	24.2	542	7.7	22	12.9
1992 <sup>(5)</sup>	70763	1601	22.6	522	7.4	19	11.9
1993	72253	1689	23.4	597	8.3	22	13.0
1994 <sup>(6)</sup>	74205	1700	22.9	562	7.6	15	8.8
1995	75304	1582	21.0	525	7.0	29	18.3
1996	76417	1611	21.1	566	7.4	15	9.3
1997	77319	1475	19.1	603	7.8	12	8.1
1998 <sup>(7)</sup>	78846	1412	17.9	570	7.2	12	8.5
1999	80410	1460	18.2	560	7.0	15	10.3
2000 <sup>(7)</sup>	81131	1512	18.6	553	6.8	15	9.9
2001	81202	1440	17.7	554	6.8	19	13.2
2002 <sup>(8)</sup>	83723	1481	17.7	647	7.7	26	17.6
2003 <sup>(8)</sup>	82781	1498	18.1	668	8.1	25	16.7
2004 <sup>(9)</sup>	82475	1435	17.4	611	7.2	17	11.8
2005	82858	1536	18.5	673	8.1	16	10.4
2006	84600	1467	17.3	664	7.8	14	9.5
2007	85033	1499	17.6	630	7.4	16	10.7
2008	86956	1546	17.8	662	7.6	20	12.9
2009	87298	1580	18.1	684	7.8	17	10.8
2010 <sup>(10)</sup>	89770	1504	16.8	664	7.4	21	14.0
2011 <sup>(11)</sup>	87441	1625	18.6	691	7.9	16	9.8
2012	88303	1645	18.6	651	7.4	17	10.3
2013	89949	1566	17.4	717	8.0	29	18.5
2014	91359	1557	17.0	725	7.9	17	10.9
2015	93419	1592	17.0	703	7.5	17	10.7

Source: National Bureau of Statistics/Civil Status Office

Notes:

- <sup>(1)</sup> Measured per thousand of mid-year population
- <sup>(2)</sup> Deaths of infants under one year of age per 1000 live births
- <sup>(3)</sup> The mid year population estimates for 1987-1993 have been rebased using the 1987 census data
- <sup>(4)</sup> 2 persons aged 36 & 37 who were registered in 1991 are not included in births in this table
- <sup>(5)</sup> 2 persons aged 27 & 50 who were registered in 1992 are not included in births in this table
- <sup>(6)</sup> The population has been rebased using the 1994 Census results
- <sup>(7)</sup> The population has been adjusted due to misreporting of births from Civil Status
- <sup>(8)</sup> The original census figure has been adjusted by 2.4% to take into account undercounts
- <sup>(9)</sup> The population has been rebased using the 2002 Census results.
- <sup>(10)</sup> The population has been rebased using the 2010 Census results.
- <sup>(11)</sup> The population has been adjusted due to misreporting of births from Civil Status

**COMPONENTS OF POPULATION CHANGE, 2002 - 2015**

**Table 2a**

Period	Population at beginning of period	Registered			Population at end of period
		Live Births	Registered Deaths	Migration	
Jul-Dec 2002 <sup>(1)</sup>	83723	724	-287	-1984	82176
Jan-June 2003	82176	771	-323	157	82781
Jul-Dec 2003	82781	727	-331	-1186	81991
Jan-June 2004	81991	748	-276	12	82475
Jul-Dec 2004	82475	687	-319	-396	82447
Jan-June 2005	82447	808	-297	-106	82852
Jul-Dec 2005	82852	728	-358	-505	82717
Jan-June 2006	82717	732	-363	1514	84600
Jul-Dec 2006	84600	735	-289	-1104	83942
Jan-June 2007	83942	767	-315	639	85033
Jul-Dec 2007	85033	732	-290	-168	85307
Jan-June 2008	85307	719	-340	1270	86956
Jul-Dec 2008	86956	827	-296	-348	87139
Jan-June 2009	87139	834	-298	-377	87298
Jul-Dec 2009	87298	746	-358	-564	87122
Jan-June 2010	87122	740	-316	-1021	86525
Jul-Dec 2010 <sup>(2)</sup>	89770	764	-331	-2113	88090
Jan-June 2011	88090	775	-324	-1100	87441
Jul-Dec 2011	87441	850	-328	310	88273
Jan-June 2012	88273	838	-322	-486	88303
Jul-Dec 2012 <sup>(3)</sup>	88303	807	-306	1115	89919
Jan-June 2013	89919	808	-336	-442	89949
Jul-Dec 2013	89949	758	-344	619	90982
Jan-June 2014	90982	777	-342	-58	91359
Jul-Dec 2014	91359	780	-346	333	92126
Jan-June 2015	92126	810	-346	829	93419
Jul-Dec 2015	93419	782	-332	-725	93144

**Source:** National Bureau of Statistics from information provided by Department of Immigration and Civil Status

Notes:

<sup>(1)</sup> The population has been rebased using the 2002 Census results

<sup>(2)</sup> The population has been adjusted and rebased using the 2010 Census results

<sup>(3)</sup> As from July seaman entering the country to join fishing vessels and exiting the country thereafter are excluded from the migration figures

The table below shows infant deaths that are excluded from population estimates as they were not registered as a birth by Civil Status office

Year	Infant Deaths
2009	1
2011	1
2013	5
2014	5
2015	3

**REGISTERED LIVE BIRTHS BY YEAR, MONTH OF REGISTRATION,  
SEX AND STATUS, 2011-2015**

**Table 3**

<b>Month/Year</b>	<b>2011</b>	<b>2012</b>	<b>2013</b>	<b>2014</b>	<b>2015</b>
January	103	129	159	138	112
February	103	118	115	89	130
March	130	140	107	159	108
April	144	150	157	137	161
May	160	185	147	149	135
June	135	116	123	105	164
July	152	137	144	165	153
August	130	150	127	119	110
September	135	131	117	124	119
October	151	127	124	130	123
November	146	132	112	126	136
December	136	130	134	116	141
<b><u>TOTAL</u></b>	<b><u>1625</u></b>	<b><u>1645</u></b>	<b><u>1566</u></b>	<b><u>1557</u></b>	<b><u>1592</u></b>
<b><u>SEX</u></b>					
Males	807	839	800	795	814
Females	818	806	766	762	778
<b><u>LEGITIMACY STATUS</u></b>					
Born within Wedlock (legitimate)	355	338	329	348	359
<u>Born out of Wedlock (illegitimate)</u>					
of which					
Acknowledged by the father	992	1005	1005	966	1004
Other	278	302	232	243	229

**Source: National Bureau of Statistics/Civil Status Office**

**BIRTHS BY BIRTH ORDER AND BY STATUS AND AGE GROUP OF MOTHER, 2015**

**Table 4a**

**Number of births**

Legitimacy Status and Age Group	Total Births	Birth Order						
		1	2	3	4	5	6	7+
<b><u>LEGITIMACY STATUS</u></b>								
Born within Wedlock (legitimate)	<b>359</b>	107	135	83	23	7	2	2
<b><u>Born out of Wedlock (illegitimate)</u></b>								
of which								
Acknowledged by the father	<b>1004</b>	434	338	142	54	24	9	3
Other	<b>229</b>	117	50	30	15	14	2	1
<b>TOTAL</b>	<b>1592</b>	<b>658</b>	<b>523</b>	<b>255</b>	<b>92</b>	<b>45</b>	<b>13</b>	<b>6</b>
<b><u>AGE-GROUP</u></b>								
Under 15	<b>5</b>	4	1	0	0	0	0	0
15-19	<b>187</b>	169	16	2	0	0	0	0
20-24	<b>420</b>	246	129	40	5	0	0	0
25-29	<b>406</b>	141	170	61	19	12	3	0
30-34	<b>325</b>	76	134	75	26	10	3	1
35-39	<b>189</b>	18	60	56	30	18	4	3
40-44	<b>56</b>	4	13	19	11	4	3	2
45+	<b>4</b>	0	0	2	1	1	0	0

*Source: National Bureau of Statistics/Civil Status Office*



**BIRTHS BY DISTRICT OF RESIDENCE AND AGE GROUP OF MOTHER, 2015**

**Table 4b**

District of Residence	Age Group								Total
	Under 15	15-19	20-24	25-29	30-34	35-39	40-44	45+	
Anse Aux Pins	0	10	26	20	11	11	3	1	<b>82</b>
Anse Boileau	0	8	23	13	16	7	5	0	<b>72</b>
Au Cap	0	7	16	12	8	9	2	0	<b>54</b>
Anse Etoile	0	5	21	26	19	8	3	0	<b>82</b>
Anse Royale	0	7	8	21	18	16	4	0	<b>74</b>
Bel Air	0	3	13	11	10	1	1	0	<b>39</b>
Baie Lazare	0	13	10	20	13	6	1	0	<b>63</b>
Belombre	0	4	14	9	10	0	2	0	<b>39</b>
Baie Sainte Anne	1	8	18	26	9	9	1	0	<b>72</b>
Beau Vallon	1	6	18	13	17	8	2	1	<b>66</b>
Cascade	0	11	16	19	14	10	1	0	<b>71</b>
English River	1	18	39	32	32	25	6	0	<b>153</b>
Glacis	0	5	11	15	10	7	2	1	<b>51</b>
Grand Anse Mahe	0	8	17	6	9	4	1	0	<b>45</b>
Grand Anse Praslin	0	12	21	17	14	5	2	0	<b>71</b>
La Digue& Inner Islands	0	2	9	9	10	8	0	0	<b>38</b>
Les Mamelles	0	9	12	9	6	5	2	0	<b>43</b>
Mont Buxton	0	6	17	19	11	11	5	0	<b>69</b>
Mont Fleuri	0	5	20	18	15	10	2	0	<b>70</b>
Plaisance	2	7	10	23	13	3	2	0	<b>60</b>
Port Glaud	0	6	14	5	6	2	4	0	<b>37</b>
Pointe Larue	0	8	20	15	15	5	2	1	<b>66</b>
Roche Caiman	0	7	17	16	9	6	2	0	<b>57</b>
Saint Louis	0	10	21	21	21	7	1	0	<b>81</b>
Takamaka	0	2	9	11	9	6	0	0	<b>37</b>
<b>Total</b>	<b>5</b>	<b>187</b>	<b>420</b>	<b>406</b>	<b>325</b>	<b>189</b>	<b>56</b>	<b>4</b>	<b>1592</b>

*Source: National Bureau of Statistics/Civil Status Office*

**AGE SPECIFIC FERTILITY RATES, 2000-2015**

**Table 5**

**Births per women**

<b>Group</b>	<b>2000</b>	<b>2001</b>	<b>2002<sup>(2)</sup></b>	<b>2003</b>	<b>2004</b>	<b>2005</b>	<b>2006</b>	<b>2007</b>	<b>2008</b>	<b>2009</b>	<b>2010<sup>(3)</sup></b>	<b>2011</b>	<b>2012</b>	<b>2013</b>	<b>2014</b>	<b>2015</b>
<b>10 - 14</b>	0.001	0.001	0.001	0.001	0.000	0.001	0.001	0.002	0.001	0.001	0.001	0.001	0.001	0.001	0.002	0.002
<b>15 - 19</b>	0.055	0.059	0.057	0.060	0.054	0.059	0.054	0.063	0.063	0.073	0.062	0.070	0.067	0.065	0.067	0.069
<b>20 - 24</b>	0.113	0.112	0.105	0.117	0.111	0.118	0.103	0.096	0.105	0.124	0.121	0.134	0.137	0.152	0.131	0.136
<b>25 - 29</b>	0.107	0.103	0.105	0.097	0.104	0.114	0.129	0.142	0.146	0.133	0.104	0.114	0.122	0.108	0.127	0.131
<b>30 - 34</b>	0.080	0.073	0.076	0.078	0.076	0.083	0.079	0.075	0.085	0.083	0.079	0.086	0.092	0.083	0.074	0.079
<b>35 - 39</b>	0.046	0.040	0.053	0.046	0.047	0.052	0.044	0.053	0.053	0.049	0.053	0.055	0.049	0.052	0.052	0.050
<b>40 - 44</b>	0.013	0.008	0.010	0.011	0.012	0.013	0.009	0.016	0.011	0.014	0.017	0.016	0.016	0.014	0.015	0.016
<b>45 - 49</b>	0.001	0.000	0.000	0.001	0.001	0.001	0.000	0.001	0.001	0.001	0.000	0.000	0.001	0.001	0.001	0.001
<b>Total Fertility<sup>(4)</sup></b>	<b>2.08</b>	<b>1.98</b>	<b>2.04</b>	<b>2.06</b>	<b>2.01</b>	<b>2.20</b>	<b>2.11</b>	<b>2.24</b>	<b>2.33</b>	<b>2.38</b>	<b>2.17</b>	<b>2.38</b>	<b>2.42</b>	<b>2.37</b>	<b>2.34</b>	<b>2.41</b>

*Source: National Bureau of Statistics*

**Notes:**

*(1) From 1994 -2001 the population estimates are based on smoothed 1994 Census data*

*(2) From 2002-2009 the population estimates are based on the 2002 Census results*

*(3) From 2010 the population estimates have been adjusted and rebased using the 2010 Census results*

*(4) Total fertility = Total number of children born to a woman who passes through childbearing ages experiencing current age-specific fertility rates*

**DEATHS BY AGE AND SEX, 2011-2015**

**Table 6**

	2011		2012		2013		2014		2015	
Age Group	Males	Females	Males	Females	Males	Females	Males	Females	Males	Females
<b>Under 1</b>	<b>10</b>	<b>6</b>	<b>10</b>	<b>7</b>	<b>12</b>	<b>17</b>	<b>12</b>	<b>5</b>	<b>7</b>	<b>10</b>
1 - 4	4	2	3	1		2	3	1	1	2
5 - 9	2	0	2			1	0	1	3	2
10-14	1	0	2			1	1	1	2	1
15 - 19	3	0	3	1	2	0	5	0	1	2
20 - 24	7	2	4	4	4	1	7	5	9	3
25 - 29	10	6	4	3	11	3	8	7	8	2
30 - 34	11	4	5	2	10	6	12	3	12	9
35 - 39	13	5	19	3	7	5	13	9	9	9
40 - 44	23	6	14	7	16	6	22	6	21	3
45 - 49	27	12	19	8	23	13	29	11	28	11
50 - 54	36	13	32	10	28	14	34	13	30	15
55 - 59	28	8	29	21	31	19	42	16	38	17
60 - 64	35	19	37	17	21	14	38	20	43	17
65 - 69	32	12	26	15	44	19	40	15	46	13
70 - 74	41	29	41	20	46	21	32	29	32	24
75 - 79	42	36	44	27	54	48	45	30	46	42
80 - 84	33	52	48	36	33	47	35	36	35	47
85+	34	87	40	87	41	97	47	92	30	73
<b>TOTAL</b>	<b>392</b>	<b>299</b>	<b>382</b>	<b>269</b>	<b>383</b>	<b>334</b>	<b>425</b>	<b>300</b>	<b>401</b>	<b>302</b>

*Source: National Bureau of Statistics /Civil Status Office*

**DEATHS BY SEX AND MAJOR CAUSES OF DEATHS FOR PERSONS AGED 5 AND ABOVE, 2013-2015**

**Table7(a)**

ICD 10 Codes and Description	2013		2014		2015	
	M	F	M	F	M	F
1001-1025 Certain Infectious and parasitic diseases	28	25	50	31	28	17
1026-1047 Neoplasms	68	51	69	56	87	63
1048-1050 Diseases of the Blood	5	5	6	9	1	2
1051-1054 Endocrine,nutritional and metabolic diseases	7	6	9	9	8	7
1055-1057 Mental and behavioural disorders	1	1	1	1	4	1
1058-1061 Diseases of the nervous system	8	1	3	3	3	7
1064-1071 Diseases of the circulatory system	95	128	108	93	118	98
1072-1077 Diseases of the respiratory	58	47	53	40	42	39
1078-1081 Diseases of the digestive system	31	18	36	17	19	23
1082 Diseases of the skin	0	1	1	2	3	3
1084-1086 Diseases of the genitourinary system	21	20	30	17	20	17
1087-1091 Pregnancy,childbirth and the puerperium	0	0	0	0	0	3
1093 Congenital malformations	0	0	3	0	0	1
1094 Symptoms,signs and abnormal clinical findings	8	7	8	4	9	8
1095-1103 Extenal causes of morbidity and mortality	41	5	34	12	51	1
<b>Total</b>	<b>371</b>	<b>315</b>	<b>411</b>	<b>294</b>	<b>393</b>	<b>290</b>

*Source: National Bureau of Statistics/Epidemiology and Statistics Section, Public Health Authority*

**DEATHS BY SEX AND MAJOR CAUSES OF DEATHS, FOR PERSONS AGED UNDER 5, 2013-2015**

**Table7(b)**

ICD 10 Codes and Description	2013		2014		2015	
	M	F	M	F	M	F
3001-3015 Certain infectious and parasitic diseases	0	5	0	1	0	2
3016-3019 Neoplasms	0	0	0	0	1	0
3020-3022 Diseases of the Blood	0	0	0	0	0	1
3026-3028 Diseases of the nervous system	2	0	0	0	0	0
3030 Diseases of the circulatory system	1	0	1	1	0	0
3031-3034 Diseases of the respiratory	4	8	1	1	2	1
3035 Diseases of the digestive system	0	0	0	0	0	0
3036 Diseases of the genitourinary system	0	0	0	0	0	1
3037-3048 Certain conditions originating in the perianantal	5	3	8	3	3	5
3049-3055 Congenital malformations	0	2	3	0	2	2
3056-3058 Symptoms, signs and abnormal clinical and laboratory findings not elsewhere classified	0	0	1	0	0	0
3060-3067 External causes of morbidity and mortality	0	1	0	0	0	0
<b>TOTAL</b>	<b>12</b>	<b>19</b>	<b>14</b>	<b>6</b>	<b>8</b>	<b>12</b>

*Source: National Bureau of Statistics/Epidemiology and Statistics Section, Public Health Authority*

**AGE AND SEX SPECIFIC MORTALITY RATES, 2011 - 2015<sup>(1)(2)</sup>**

**Table 8**

Age group	Average 2011-2012		Average 2013-2014		2015	
	Males	Females	Males	Females	Males	Females
Under 1 <sup>(1)</sup>	12.2	8.0	15.0	14.4	8.6	12.9
Under 5 <sup>(1)</sup>	19.2	11.0	18.0	17.4	9.6	14.9
5-9	0.6	0.0	0.0	0.3	1.0	0.7
10-14	0.5	0.0	0.2	0.3	0.7	0.3
15-19	0.8	0.1	1.1	0.0	0.4	0.7
20-24	1.5	1.0	1.6	1.0	2.6	1.0
25-29	1.9	1.3	2.6	1.5	2.2	0.6
30-34	2.2	0.8	2.9	1.2	3.0	2.2
35-39	4.2	1.1	2.9	1.9	2.5	2.4
40-44	5.2	1.9	5.0	1.7	5.4	0.8
45-49	6.7	2.9	8.1	3.3	9.0	3.1
50-54	11.6	4.2	9.3	3.9	8.3	4.0
55-59	14.2	7.5	14.7	7.4	13.5	6.4
60-64	26.3	12.8	18.6	9.8	21.3	8.3
65-69	28.5	12.3	36.3	13.7	34.3	9.5
70-74	56.2	23.0	48.7	25.0	34.6	23.3
75-79	84.3	36.5	103.0	44.5	87.1	47.7
80-84	165.6	114.6	166.3	112.5	139.8	95.7
<b>Overall</b>	<b>9.2</b>	<b>6.8</b>	<b>9.6</b>	<b>7.4</b>	<b>9.5</b>	<b>7.0</b>

*Source: National Bureau of Statistics*

*Notes: (1) Under 1 and Under 5 mortality rates calculated per thousand registered live births for the year*

*(2) For other age groups deaths per thousand of estimated mid-year population in respective age groups*

**LIFE EXPECTANCY AT BIRTH, 1980-2015**

**Table 9**

Year	Age in Years		
	Males	Females	Both Sexes
1980	65.5	73.9	69.5
1981	67.7	72.8	70.5
1982	64.3	74.6	69.2
1983	65.7	75.3	70.2
1984	65.7	73.6	69.6
1985	63.6	76.1	69.1
1986	64.9	72.6	69.7
1987	63.7	73.0	68.2
1988	64.8	72.8	68.8
1989	62.8	73.4	67.7
1990	62.4	74.1	67.7
1991	65.2	76.5	70.3
1992	65.8	76.9	70.9
1993	64.2	75.0	69.4
1994	65.9	75.8	70.5
1995	65.8	79.5	72.0
1996	66.0	77.4	71.3
1997	65.7	77.0	71.0
1998	67.6	76.1	71.7
1999	67.4	78.2	72.4
2000	67.9	77.9	72.7
2001	67.4	79.4	72.5
2002	66.6	75.8	71.0
2003	66.2	76.1	70.9
2004	69.1	76.4	72.6
2005	67.4	77.1	71.9
2006	68.9	75.7	72.2
2007	68.9	77.6	73.1
2008	67.7	78.9	72.9
2009	68.4	78.0	72.9
2010	69.1	77.5	73.2
2011	67.7	78.0	72.6
2012	69.3	79.5	74.2
2013	69.9	76.5	73.1
2014	68.4	78.3	73.2
2015	70.1	78.7	74.2

*Source: National Bureau of Statistics*

*Notes: Includes deaths to non-residents*

**AGE AND SEX DISTRIBUTION OF MIGRANTS, 2015**

**Table 10**

Age group	Males		Females		Net Migration		BOTH SEXES
	Arrivals	Departures	Arrivals	Departures	Males	Females	
0-4	948	911	801	810	37	-9	28
5-9	985	1083	979	1092	-98	-113	-211
10-14	986	1092	1021	1103	-106	-82	-188
15-19	1024	1336	1122	1453	-312	-331	-643
20-24	2559	2823	2073	2450	-264	-377	-641
25-29	4605	4560	3189	3283	45	-94	-49
30-34	5049	4845	3529	3446	204	83	287
35-39	4693	4554	3092	3126	139	-34	105
40-44	3819	3886	2901	2911	-67	-10	-77
45-49	3409	3288	2949	2798	121	151	272
50-54	2842	2913	2699	2608	-71	91	20
55-59	2223	1928	2177	1864	295	313	608
60-64	1363	1161	1259	1120	202	139	341
65+	1584	1424	1439	1347	160	92	252
<b>TOTAL</b>	<b>36089</b>	<b>35804</b>	<b>29230</b>	<b>29411</b>	<b>285</b>	<b>-181</b>	<b>104</b>

*Source: National Bureau of Statistics from immigration cards.*

**REGISTERED MARRIAGES AND DIVORCES  
1987 - 2015**

**Table 11a**

Year	Marriages					Number of Divorces
	Numbers			% of which		
	Residents	Visitors	Total	Residents	Visitors	
1987	290	332	622	47	53	25
1988	208	462	670	31	69	34
1989	174	603	777	22	78	43
1990	278	759	1037	27	73	47
1991	282	650	932	30	70	86
1992	268	561	829	32	68	87
1993	257	556	813	32	68	81
1994	301	636	937	32	68	62
1995	298	534	832	36	64	92
1996	353	521	874	40	60	72
1997	352	507	859	41	59	89
1998	330	388	718	46	54	79
1999	432	451	883	49	51	102
2000	484	465	949	51	49	86
2001	418	372	790	53	47	110
2002	428	437	865	49	51	114
2003	363	460	823	44	56	125
2004	408	497	905	45	55	169
2005	376	510	886	42	58	135
2006	385	599	984	39	61	142
2007	405	676	1081	37	63	139
2008	450	798	1248	36	64	145
2009	450	753	1203	37	63	145
2010	459	981	1440	32	68	156
2011	466	1059	1525	31	69	165
2012	520	1228	1748	30	70	158
2013	507	1201	1708	30	70	193
2014	419	1236	1655	25	75	158
2015	391	1454	1845	21	79	149

*Source: National Bureau of Statistics/Civil Status Office*



**MARRIAGES BY AGE OF BRIDE AND GROOM, 2015  
RESIDENTS AND VISITORS**

Table 11b

AGE OF GROOM	AGE OF BRIDE										Total	%
	15-19	20-24	25-29	30-34	35-39	40-44	45-49	50-54	55+			
15-19	0	2	0	0	0	0	0	0	1	3	<b>0</b>	
20-24	7	38	18	8	1	1	0	0	0	73	<b>4</b>	
25-29	4	48	176	64	17	7	1	1	0	318	<b>17</b>	
30-34	1	25	168	202	41	13	0	0	2	452	<b>24</b>	
35-39	1	4	67	147	94	27	3	2	1	346	<b>19</b>	
40-44	0	5	24	56	79	54	12	4	3	237	<b>13</b>	
45-49	0	4	15	26	33	42	45	13	5	183	<b>10</b>	
50-54	0	0	3	11	21	25	27	23	8	118	<b>6</b>	
55+	0	3	10	5	9	13	23	15	37	115	<b>6</b>	
<b>TOTAL</b>	<b>13</b>	<b>129</b>	<b>481</b>	<b>519</b>	<b>295</b>	<b>182</b>	<b>111</b>	<b>58</b>	<b>57</b>	<b>1845</b>		
<b>%</b>	<b>1</b>	<b>7</b>	<b>26</b>	<b>28</b>	<b>16</b>	<b>10</b>	<b>6</b>	<b>3</b>	<b>3</b>	<b>100</b>	<b>100</b>	

**MARRIAGES BY AGE OF BRIDE AND GROOM, 2015  
RESIDENTS ONLY**

Table 11c

AGE OF GROOM	AGE OF BRIDE										Total	%
	15-19	20-24	25-29	30-34	35-39	40-44	45-49	50-54	55+			
15-19	0	2	0	0	0	0	0	0	1	3	<b>1</b>	
20-24	4	24	9	3	1	0	0	0	0	41	<b>10</b>	
25-29	3	22	31	16	3	4	0	0	0	79	<b>20</b>	
30-34	1	10	23	28	7	5	0	0	1	75	<b>19</b>	
35-39	0	2	5	17	11	8	0	1	0	44	<b>11</b>	
40-44	0	1	4	5	13	7	2	0	2	34	<b>9</b>	
45-49	0	1	4	2	7	9	13	2	2	40	<b>10</b>	
50-54	0	0	0	4	7	8	8	5	3	35	<b>9</b>	
55+	0	0	2	2	5	6	7	4	14	40	<b>10</b>	
<b>TOTAL</b>	<b>8</b>	<b>62</b>	<b>78</b>	<b>77</b>	<b>54</b>	<b>47</b>	<b>30</b>	<b>12</b>	<b>23</b>	<b>391</b>		
<b>%</b>	<b>2</b>	<b>16</b>	<b>20</b>	<b>20</b>	<b>14</b>	<b>12</b>	<b>8</b>	<b>3</b>	<b>6</b>	<b>100</b>	<b>100</b>	

Source: National Bureau of Statistics/Civil Status Office

**MARRIAGES BY AGE AND PREVIOUS MARITAL STATUS OF BRIDE  
RESIDENTS ONLY, 2015**

**Table 12a**

Age Group	Total Marriages	Previous Marital Status of BRIDE		
		Spinster	Widowed	Divorced
15-19	8	8	0	0
20-24	62	61	0	1
25-29	78	76	0	2
30-34	77	71	0	6
35-39	54	43	1	10
40-44	47	33	1	13
45-49	30	20	0	10
50-54	12	9	1	2
55+	23	17	0	6
<b>Total</b>	<b>391</b>	<b>338</b>	<b>3</b>	<b>50</b>

**MARRIAGES BY AGE AND PREVIOUS MARITAL STATUS OF GROOM  
RESIDENTS ONLY, 2015**

**Table 12b**

Age Group	Total Marriages	Previous Marital Status of GROOM		
		Bachelor	Widowed	Divorced
15-19	3	3	0	0
20-24	41	41	0	0
25-29	79	79	0	0
30-34	75	65	0	10
35-39	44	39	0	5
40-44	34	27	0	7
45-49	40	29	0	11
50-54	35	21	0	14
55+	40	20	1	19
<b>Total</b>	<b>391</b>	<b>324</b>	<b>1</b>	<b>66</b>

*Source: National Bureau of Statistics/Civil Status Office*

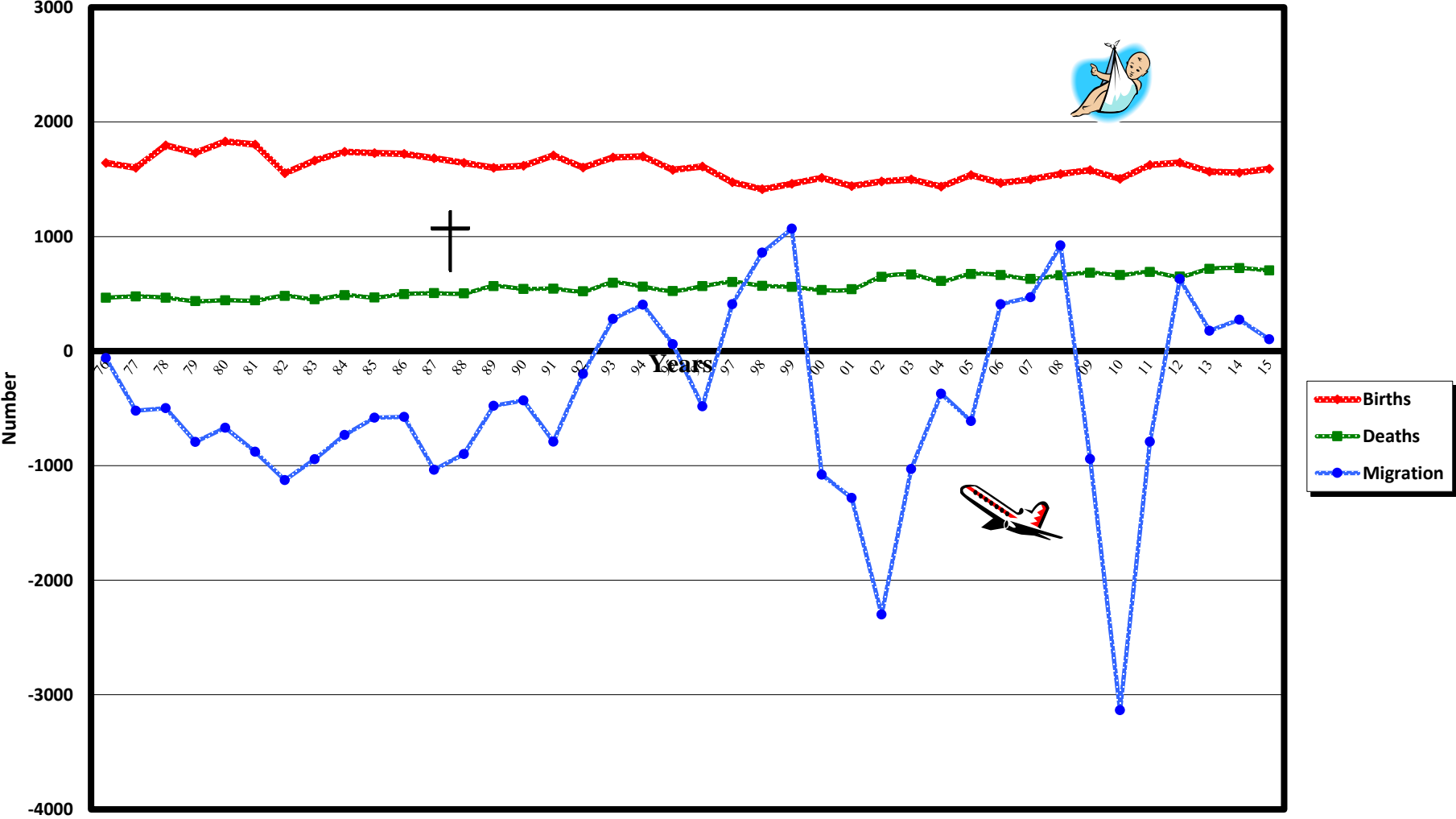
**DIVORCES BY DURATION OF MARRIAGE, 2001-2015**

**Table 13**

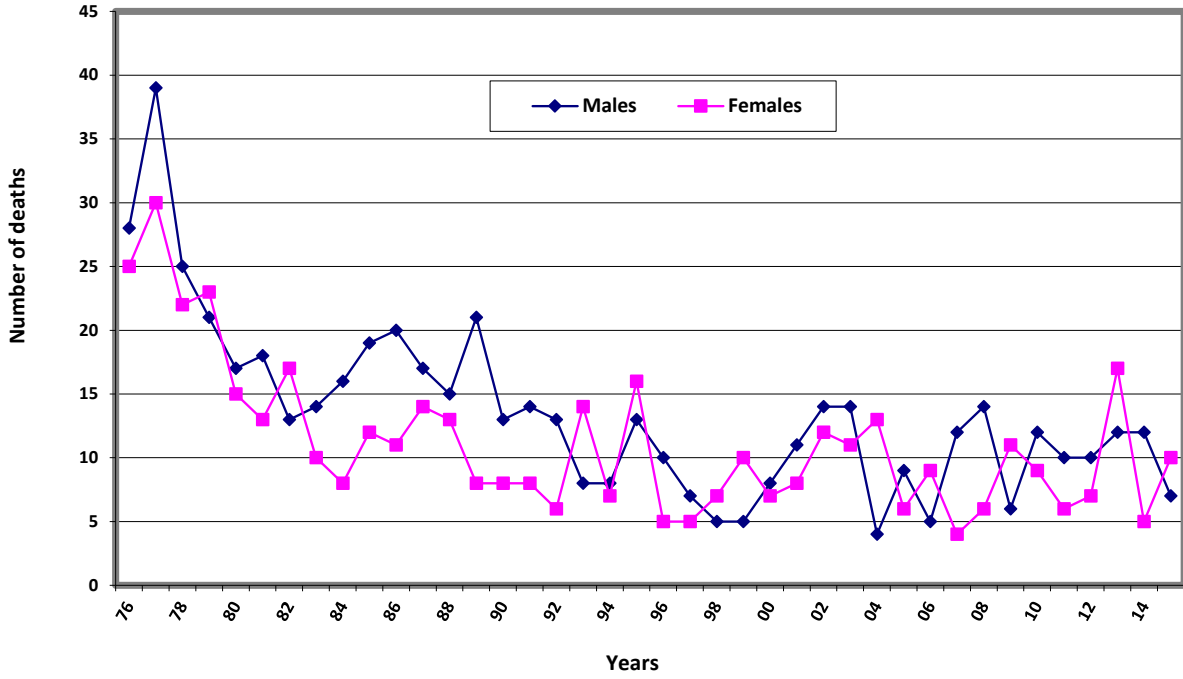
Duration of marriage (in years)	Year														
	2001	2002	2003	2004	2005	2006	2007	2008	2009	2010	2011	2012	2013	2014	2015
<b>0</b>	1	1	0	0	1	0	1	1	0	1	0	2	3	2	0
<b>1</b>	4	1	4	4	6	1	4	3	5	6	5	2	3	6	3
<b>2</b>	6	7	10	13	5	6	9	10	6	9	4	7	8	5	8
<b>3</b>	5	5	9	10	4	10	7	8	10	5	12	9	10	7	9
<b>4</b>	3	7	7	11	8	9	5	6	9	9	9	12	11	9	11
<b>5</b>	6	7	6	5	14	12	14	9	7	13	9	13	12	8	10
<b>6</b>	6	3	10	8	7	10	19	11	9	13	10	12	16	6	9
<b>7</b>	4	9	6	8	7	10	11	6	8	5	12	10	6	10	5
<b>8</b>	4	6	8	10	7	11	5	9	7	6	2	6	12	11	8
<b>9</b>	11	3	3	12	4	9	3	15	7	7	9	9	14	7	7
<b>10 - 14</b>	16	22	22	28	30	26	24	21	32	44	39	39	45	41	33
<b>15 - 19</b>	17	20	13	24	13	9	14	16	19	11	21	15	14	21	18
<b>20 - 24</b>	11	9	14	18	15	17	8	15	9	13	11	11	18	9	9
<b>25+</b>	16	14	13	18	14	12	15	15	17	14	22	11	21	16	19
<b>Total</b>	<b>110</b>	<b>114</b>	<b>125</b>	<b>169</b>	<b>135</b>	<b>142</b>	<b>139</b>	<b>145</b>	<b>145</b>	<b>156</b>	<b>165</b>	<b>158</b>	<b>193</b>	<b>158</b>	<b>149</b>

Source: National Bureau of Statistics/Civil Status Office

Chart 1: Births, Deaths, Migration  
1976-2015



**Chart 2: Infant deaths by sex, 1976-2015**



**Chart 3: Births out of wedlock per 1000 live births, 1976 - 2015**

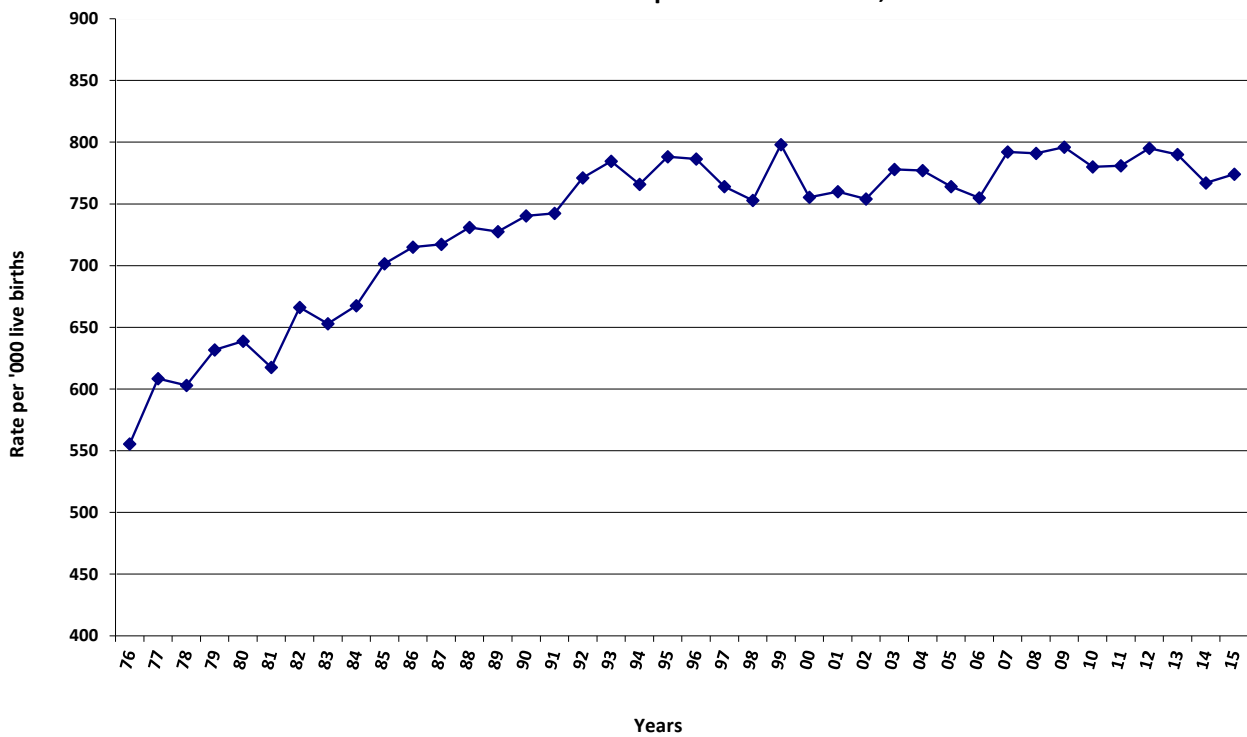


Chart 4: Age Specific Fertility Rates, 2013 -2015

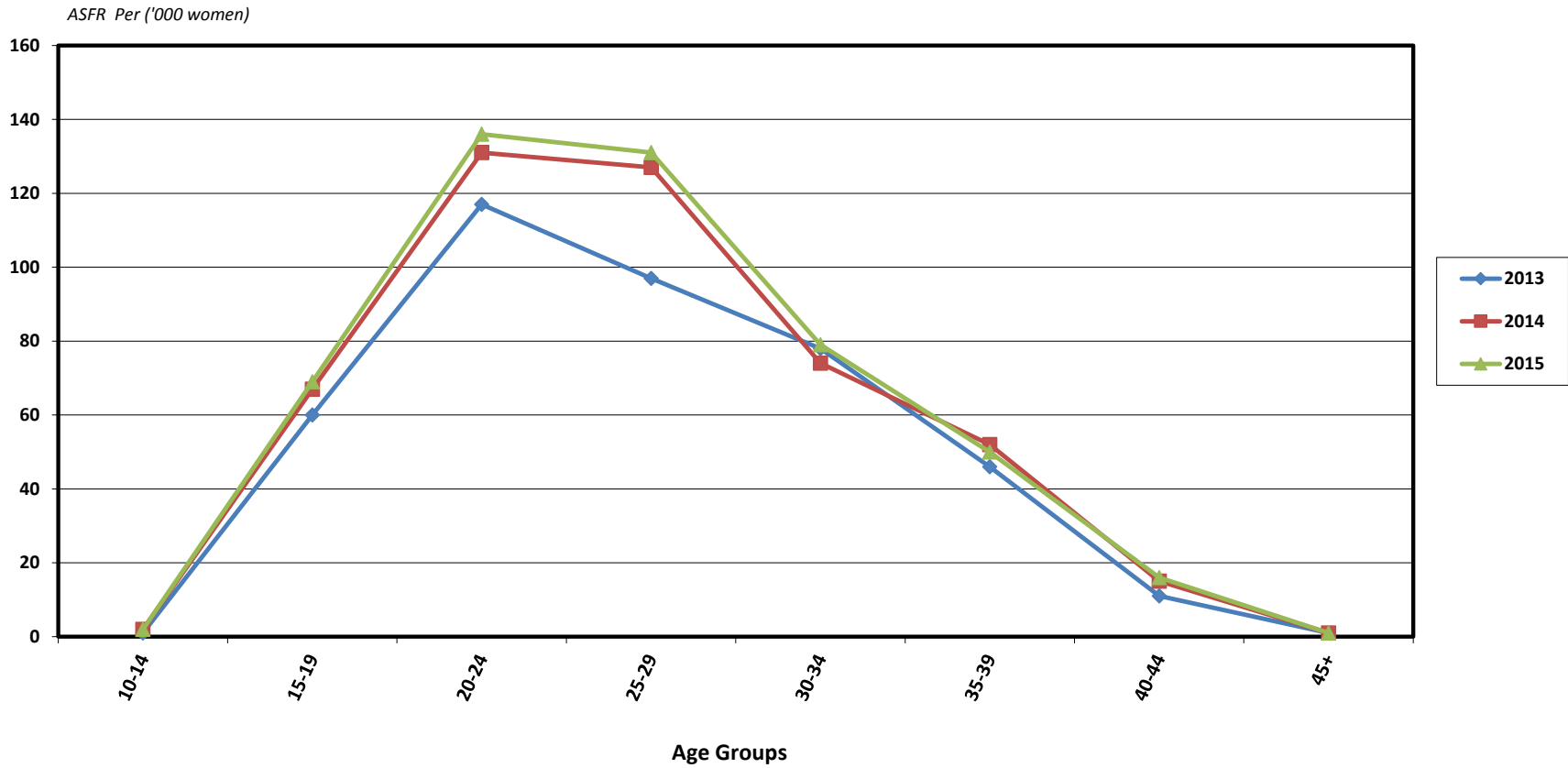
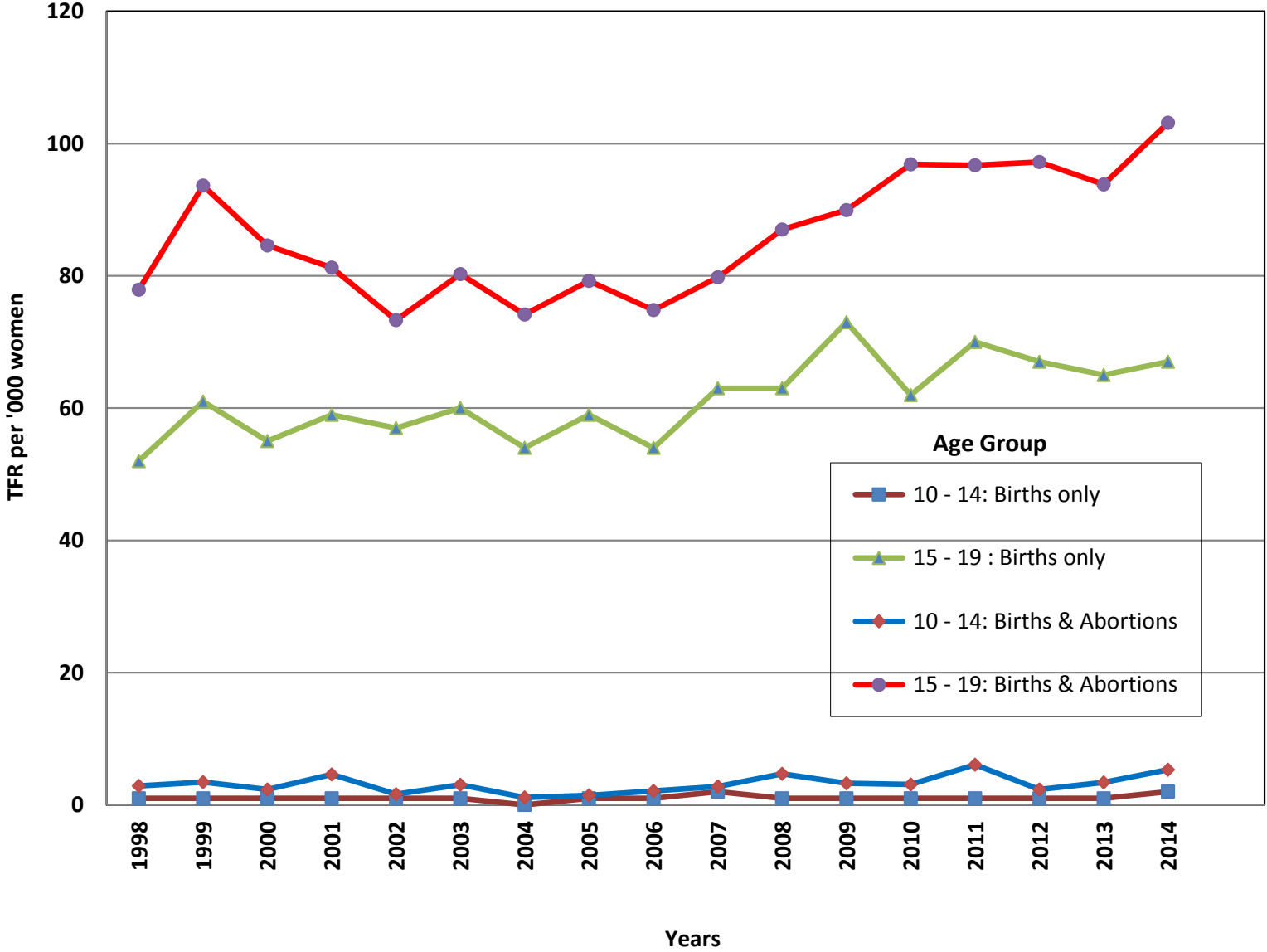
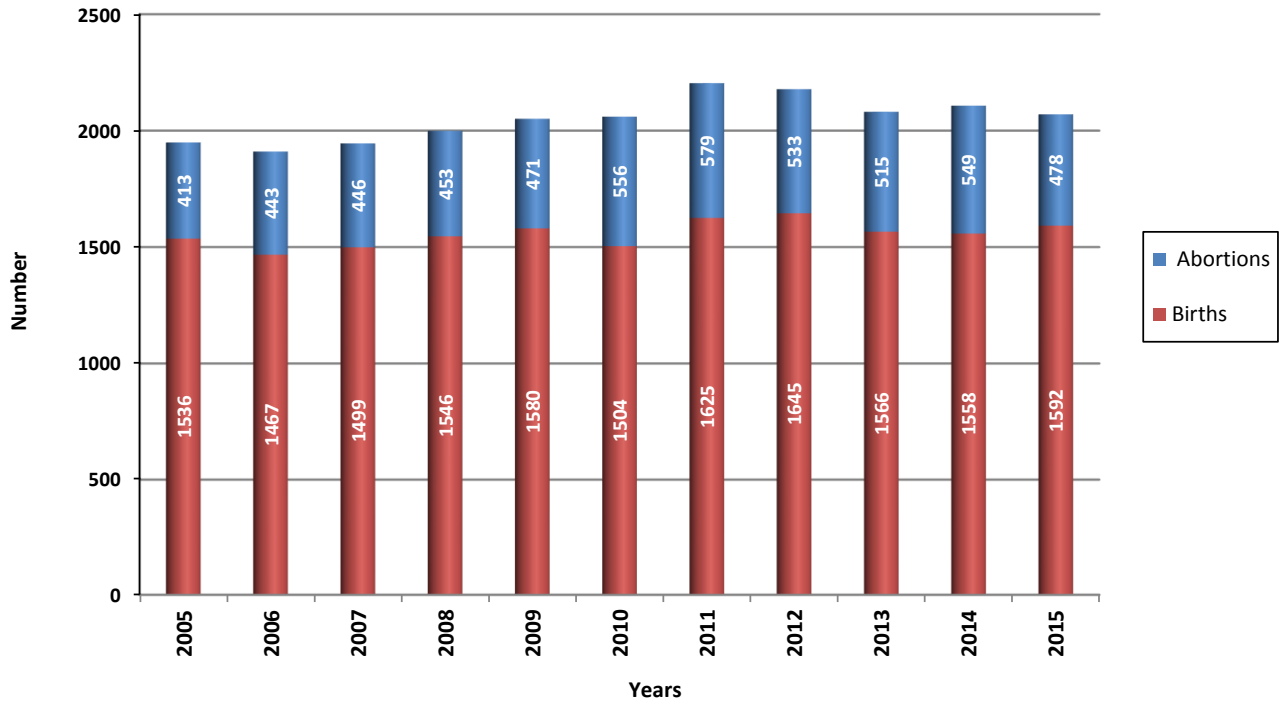


Chart 5: TFR for teenagers, 1998 - 2015



**Chart 6a: Number of registered births and abortions  
2005-2015**



**Chart 6b: Percentage of births and abortions out of total registered births and abortions  
2005 - 2015**

