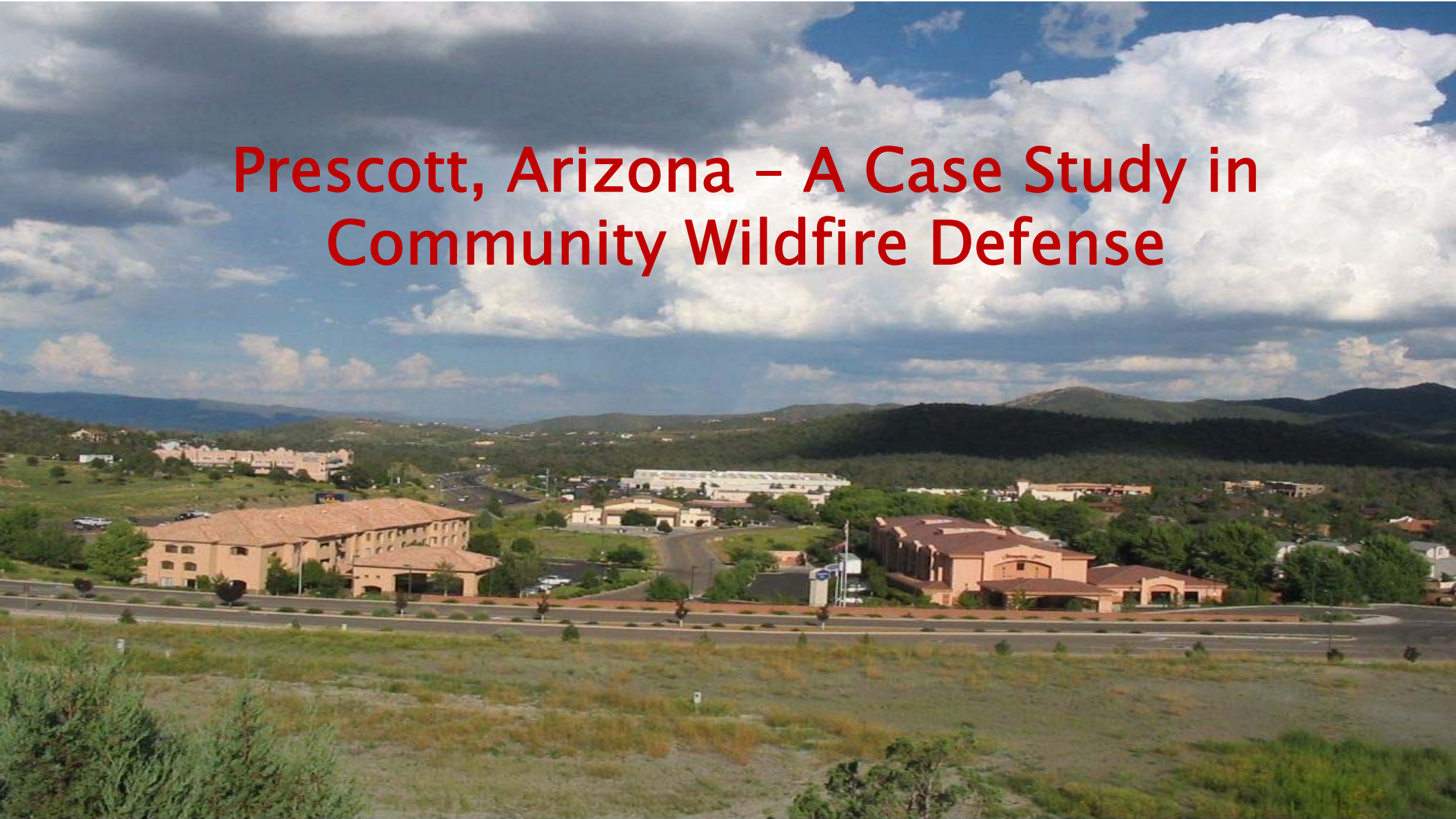


Prescott, Arizona – A Case Study in Community Wildfire Defense



Esse Quam Videri

Agenda

1. Introduction
2. Chronology of national events
3. Fire Adapted Communities
4. Benchmark Communities
5. Collaborative Approach
6. Case Study – Prescott, AZ



National Fire Protection Association

*Mission: To protect life and
property from fire*



**Fire Protection and Prevention for
Summer Homes in Forested Areas**

Prepared by the Forest Committee
of the National Fire Protection Association
Adopted 1935

Price: Ten Cents

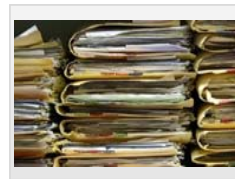
National Fire Protection Association
International
60 Batterymarch Street
Boston, Mass., U.S.A.

1985
Call to Action
NFPA

2003
Healthy Forests
Restoration Act

2010
National Cohesive
Wildland Fire
Management Strategy

2013
Fire Adapted
Communities -
Learning Network



2002
Firewise
Communities/USA®
recognition program

2005
Quadrennial Fire
Review
2009
Quadrennial Fire
Review
FLAME Act

2012
Fire Adapted
Communities

2014
Fire Management
Strategy and Risk
Analysis – Phase III
Report

28 years



Key Messages

- Fire is a natural part of our environment. As we choose to live in areas where wildfires occur, we must adapt the way we design, build and live within these areas to protect communities from the risks of wildfire.
- Fire Adapted Communities is a ***collaborative approach*** to provide comprehensive resources for all those who play a role in wildfire education, planning and action.

WUI decision-making continuum

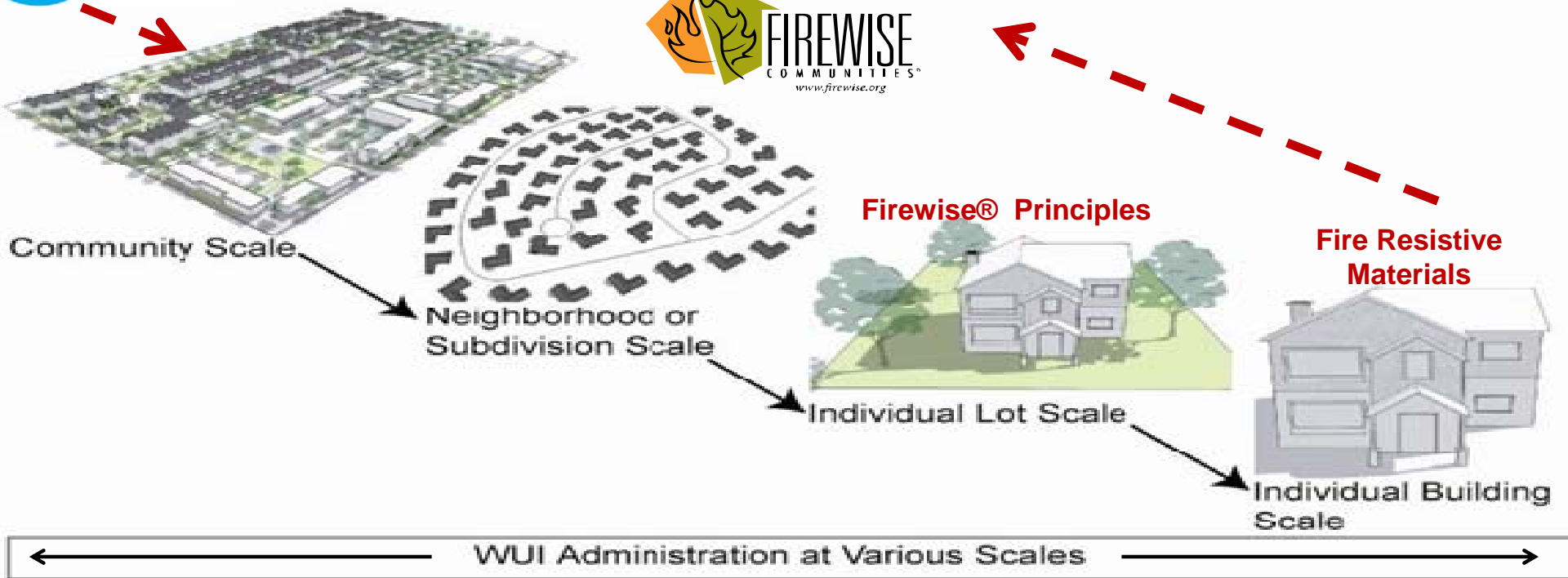
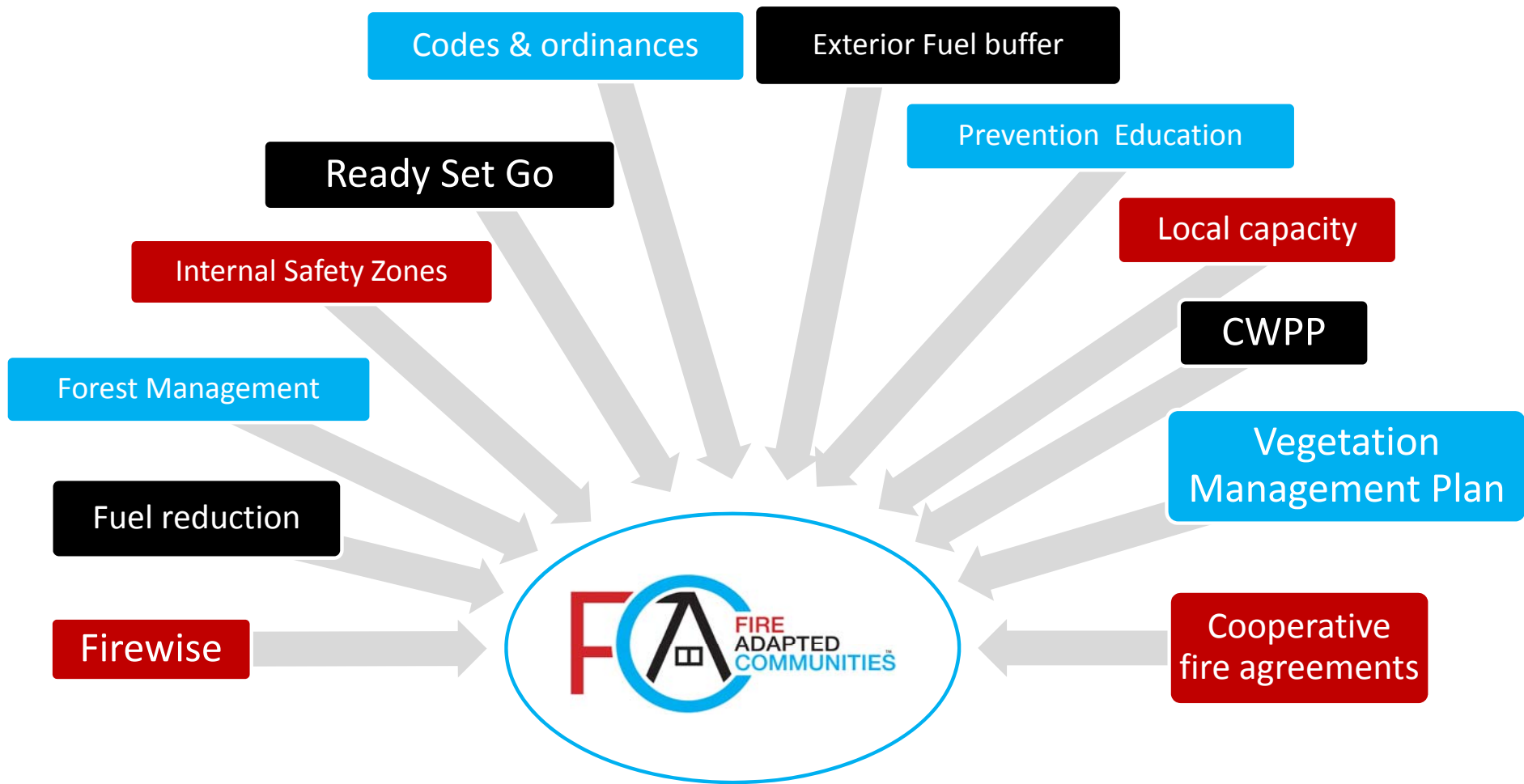
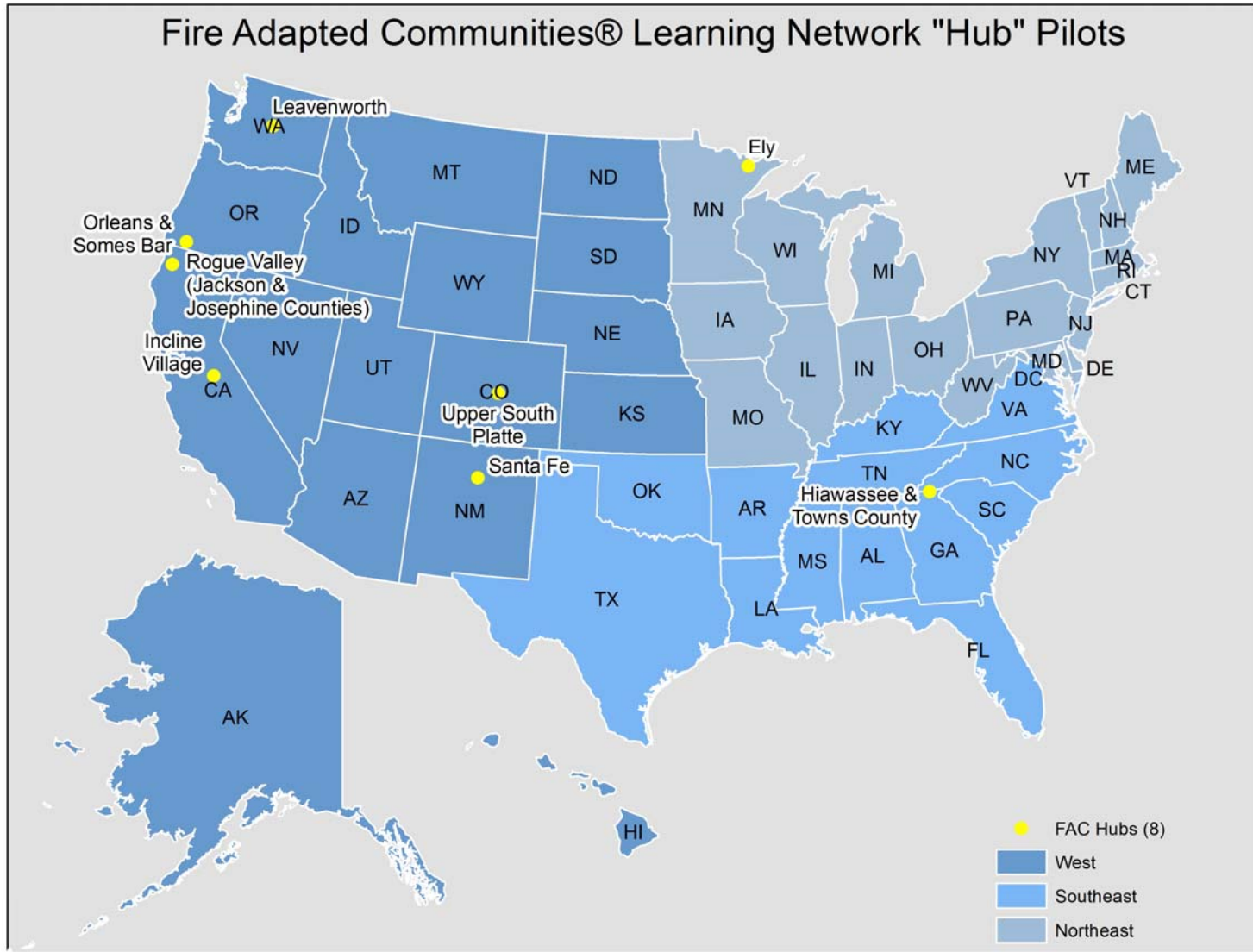


Image credit: Clarion Associates, 2011

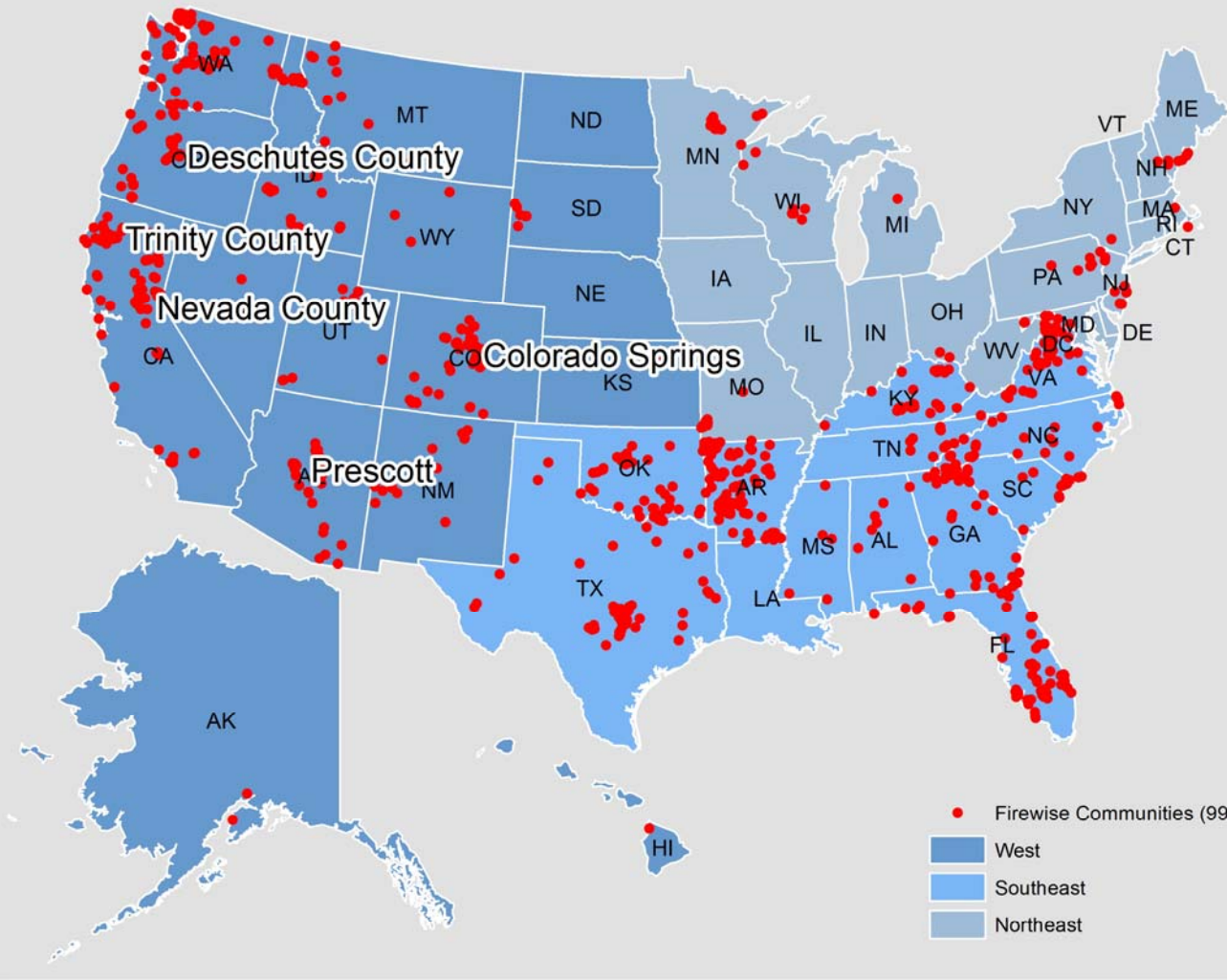




Fire Adapted Communities® Learning Network "Hub" Pilots



Benchmark Communities



One size does not fit all!

&

**Like 'fine wine' it is a process that takes time
to mature**

Characteristics

- Major fire event
- Leadership & political will
- Innovation
- Early Adoption
- Firewise Community/USA site clusters
- RSG Partnerships
- Partnerships
- Collaborative Action & Planning

Collaborative Action

- FAC offers options and opportunities to engage stakeholders
- Many forms and can be initiated by the community or agency
- Takes time to mature
- 3 distinct phases: (forest health & fire management):
 - Pre-fire activities (fuels reduction, firewise, wildlife habitat)
 - During-fire activities (suppression, evacuation)
 - Post-fire actions (safety, salvage, restoration)

Collaborative Planning

- Getting Organized: Coordinate the effort
- Consider the Setting: Recognize Local Concerns and Assets
- The Core Concept: Create a collaborative environment
- Build a Foundation: Relationships are built on communications and trust
- Skilled Communicators: The essential ingredient
- Make a Commitment: Plan for the long-term


OSU
Oregon State
UNIVERSITY

Department
of Forest
Ecosystems &
Society

October 2011

Collaborating for Healthy Forests and Communities: A Guide for Building Partnerships Among Diverse Interests

Bruce Shindler & Ryan Gordon, Oregon State University
Sarah McCaffrey, USDA Forest Service Northern Research Station
Eric Torman, The Ohio State University



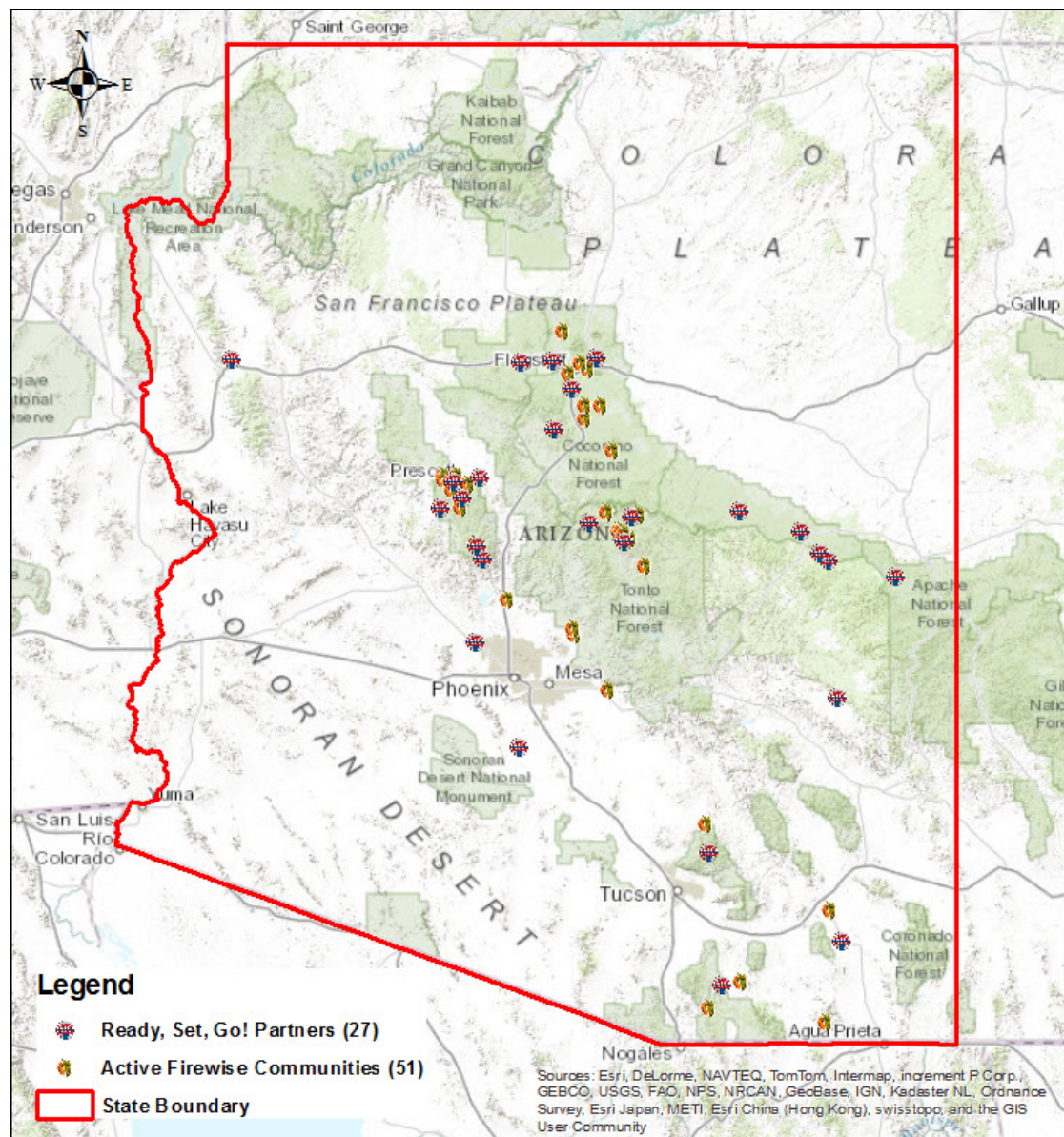
**Joint
Fire Science
Program**

UAS

A companion to the video program *Collaborating for Healthy Forests and
Communities: Building Partnerships Among Diverse Interests*

Arizona Wildfire Preparedness Activities

Top 10	Active Firewise Communities
Arkansas	121
Washington	104
Colorado	71
California	68
Texas	60
Florida	57
Virginia	53
Arizona	51
Oregon	46
Oklahoma	43



Prescott, Arizona

- 1st territorial capital of Arizona, 1864
- 1900 major fire destroyed all wooden structures in the town
- Most recent major WUI fire 2013 Doce Fire, 2,500 homes threatened

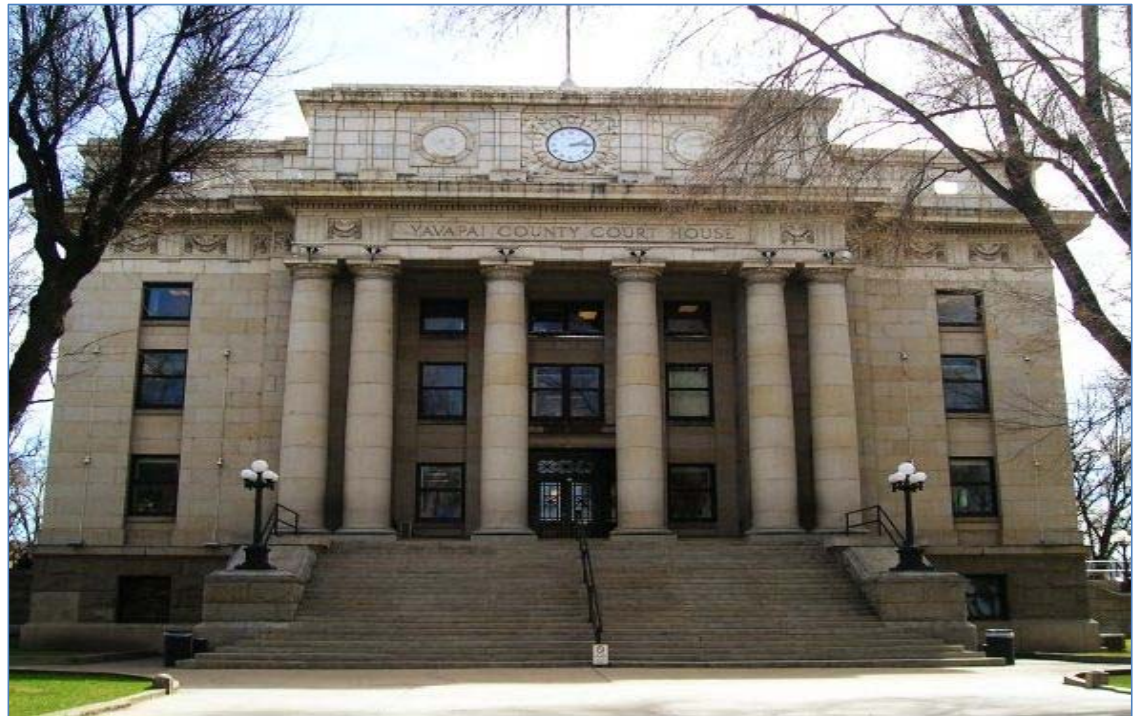
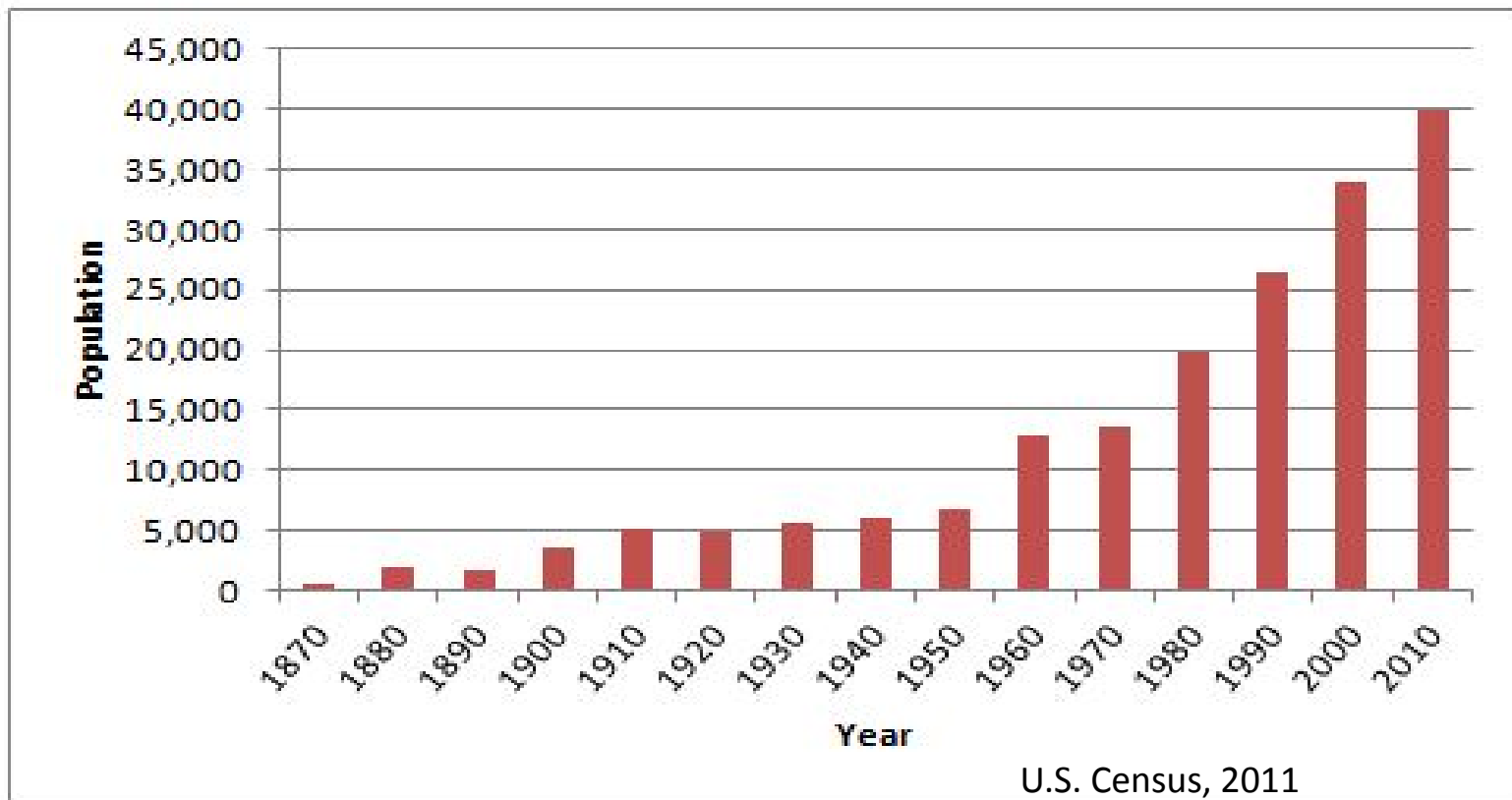


Photo credit: <http://azfoo.net>

Prescott, Arizona



Prescott, Arizona

1. Four fuel types: ponderosa pine forest, pinyon-juniper & oak woodlands, chaparral and desert grassland.
2. Fuel models don't work so well due to this heterogeneity
3. Semi-arid climate, with most precipitation July – September
4. Peak of fire season has historically been early, April – June.

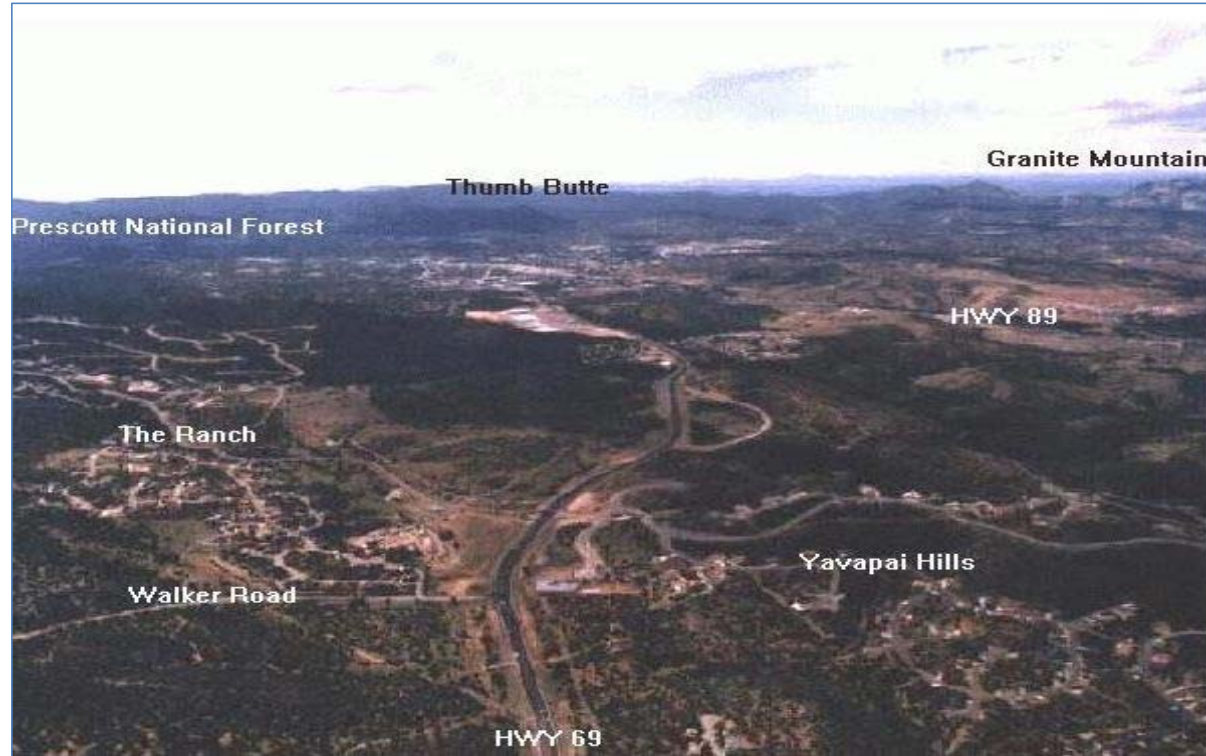
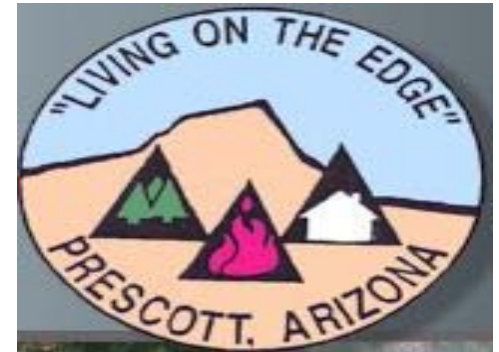


Photo credit: www.prescottrealestate.com

Prescott Area WUI Commission

- (1990) 'Dude' Wildfire
- Joint resolution – PAWUIC created
- Mission: ID, prioritize and guide the WUI management issues the Prescott Area
- **23 years later** PAWUIC model endures to this day



Prescott Area Wildland/Urban Interface Commission

Executive Board

6 members

Public Volunteers

47 members

Government Sector

38 members

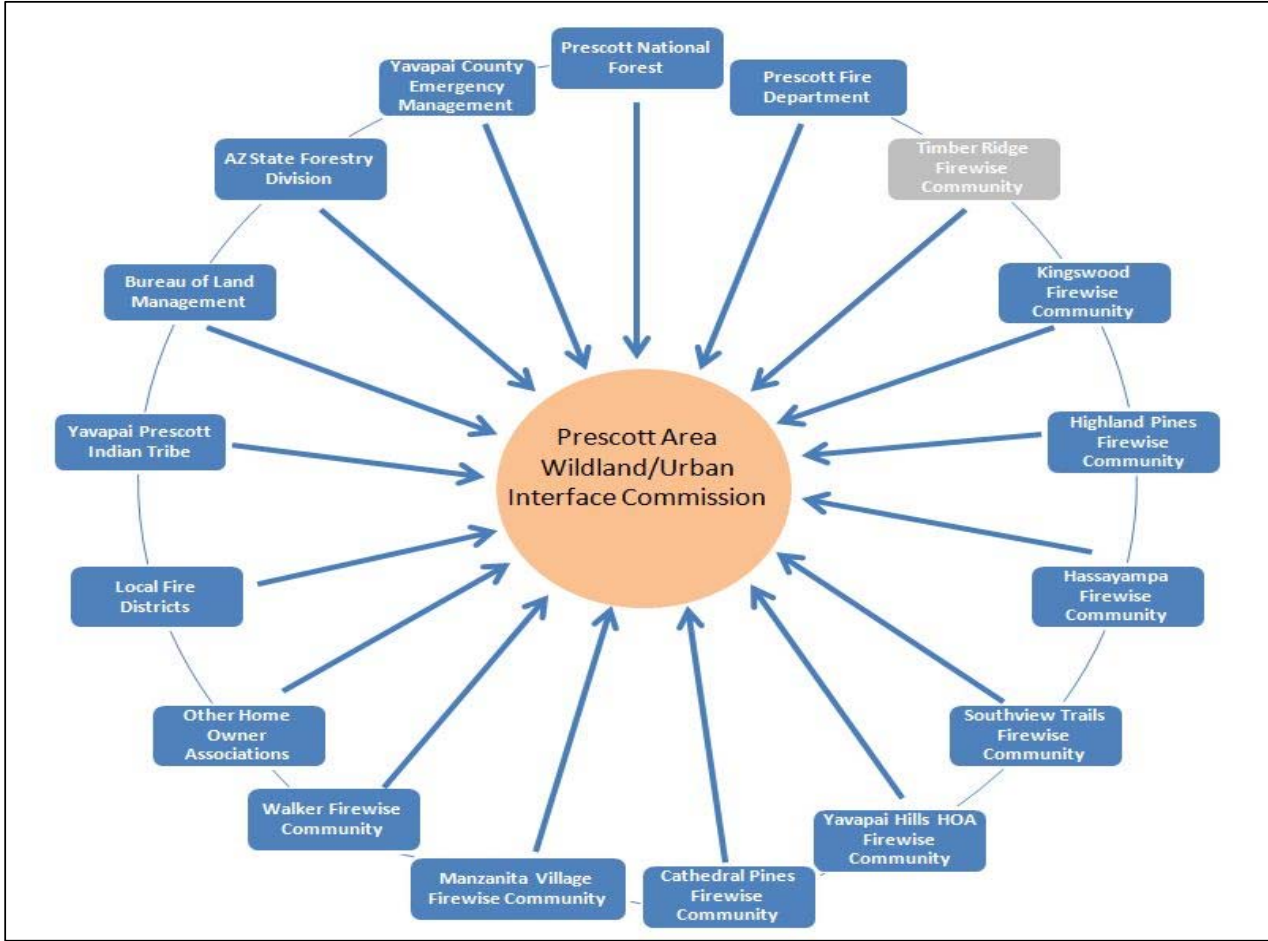
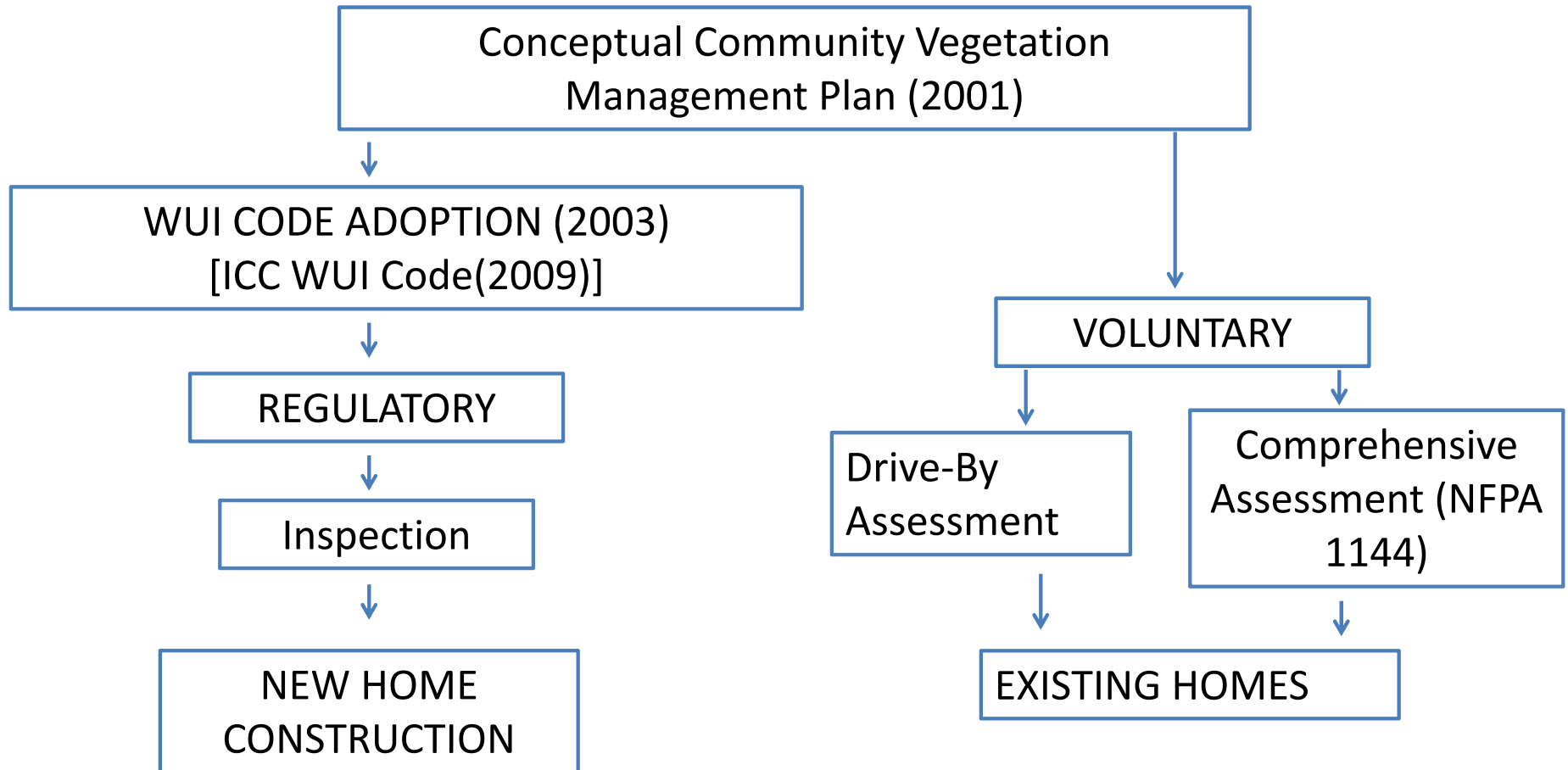




Photo credit: www.firewise.org/blogs

Risk Assessment Program



Granite Mountain Interagency Hotshot Crew

Unique: City supported crew

When not fighting fire elsewhere:

- Helping with risk assessments
- Common area; private & city property fuel mitigation projects
- Prescribed fire to treat fuels (City & NF)
- Enhanced local fire response capacity

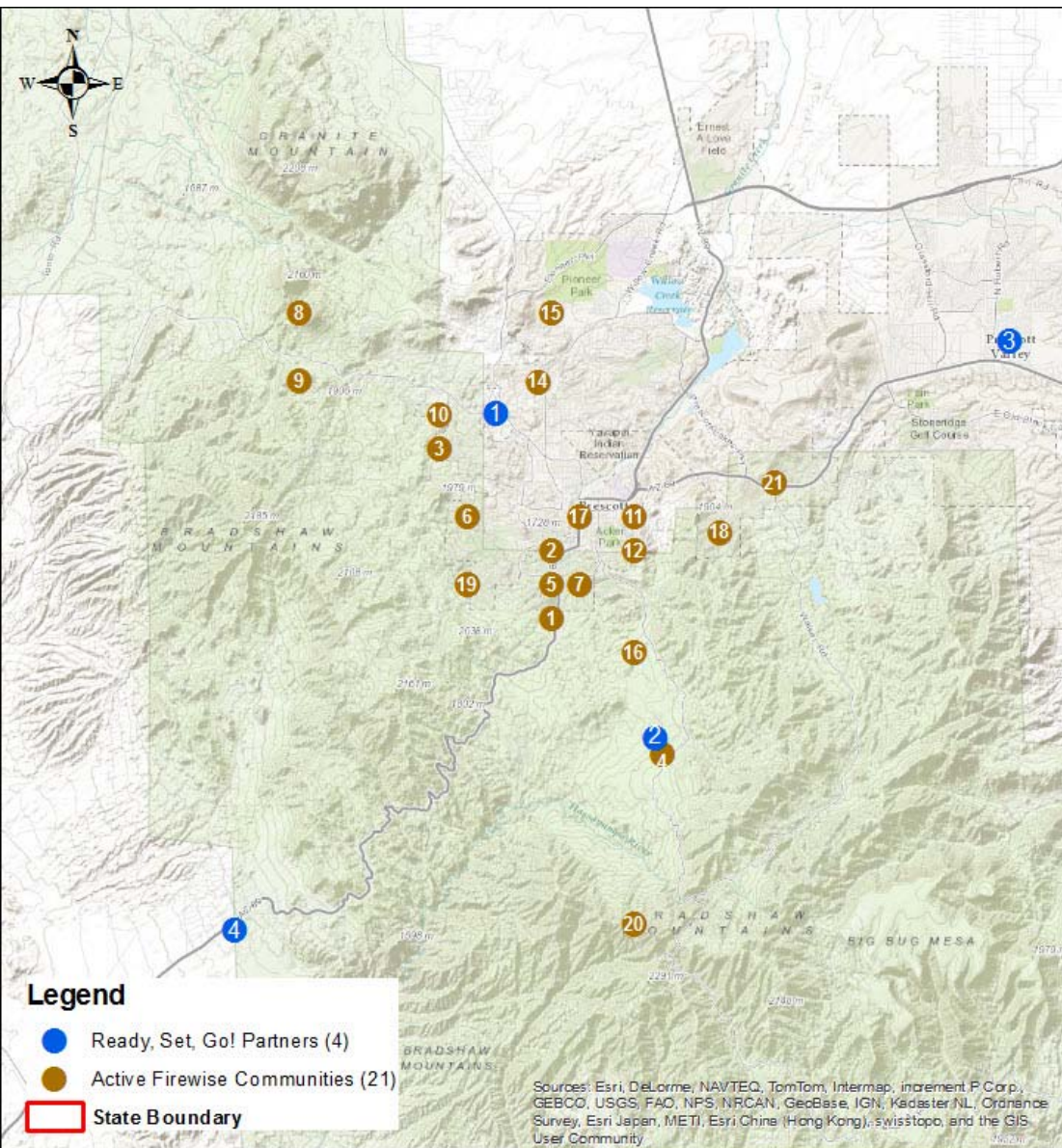


PAWUIC & Firewise®

- Timber Ridge (1st in US)
- Currently 21 FWC/USA® communities
- If Prescott was a State it be ranked 17th
- >\$860,000 invested in FWC/USA over last 11 years



Photo credit: www.firewise/blogs



Number	Name	# Residents
1	Cathedral Pines	208
2	Forest Hylands	300
3	Forest Trails	401
4	Groom Creek	1,000
5	Haisley Homestead	514
6	Hassayampa	660
7	Hidden Valley Ranch	1,300
8	Highland Pines	1,150
9	Iron Springs	300
10	Kingswood	400
11	Manzanita Village Cohousing	49
12	Quail Hollow	66
13	Rancho Vista Hills	400
14	Santa Fe Springs	64
15	Southview Trails CA	264
16	The Foothills	108
17	The Mountain Club	400
18	The Ranch at Prescott	780
19	Timber Ridge	736
20	Walker	1,190
21	Yavapai Hills HOA	1,950
TOTAL		12,240



PAWUIC Benefits

- Work gets “sold” neighbor to neighbor versus top down government approach
- Constantly new members, results in sustainability
- Has allowed PFD reach local landscape contractors thru D-space training course
 - Improved quality of work
 - PFD not seen as competitor but rather as partner
- Collective grant applications & resource prioritization
- Political support mechanism
- Increased confidence in the ‘experts’ message through a collaborative learning approach

PAWUIC Challenges

- Volunteer organization, so Government agencies have to work on their schedule
- At times it takes a little longer for things to happen
- ↑Communities = ↑Assessment Requests = can overwhelm FD

PAWUIC Elements of Success

- Holistic approach – ‘the whole is greater than the sum of it’s parts’ (Aristotle, 384-322BC)
- Formal organizational structure & governance
- Community collaboration & leadership
- Recognizing and taking action
- Community adaptation to the surrounding fire ecology environment
- Utilizing all WUI tools when appropriate and developing or adopting new ones when needed

Prescott was/is & will continue to be Ready!

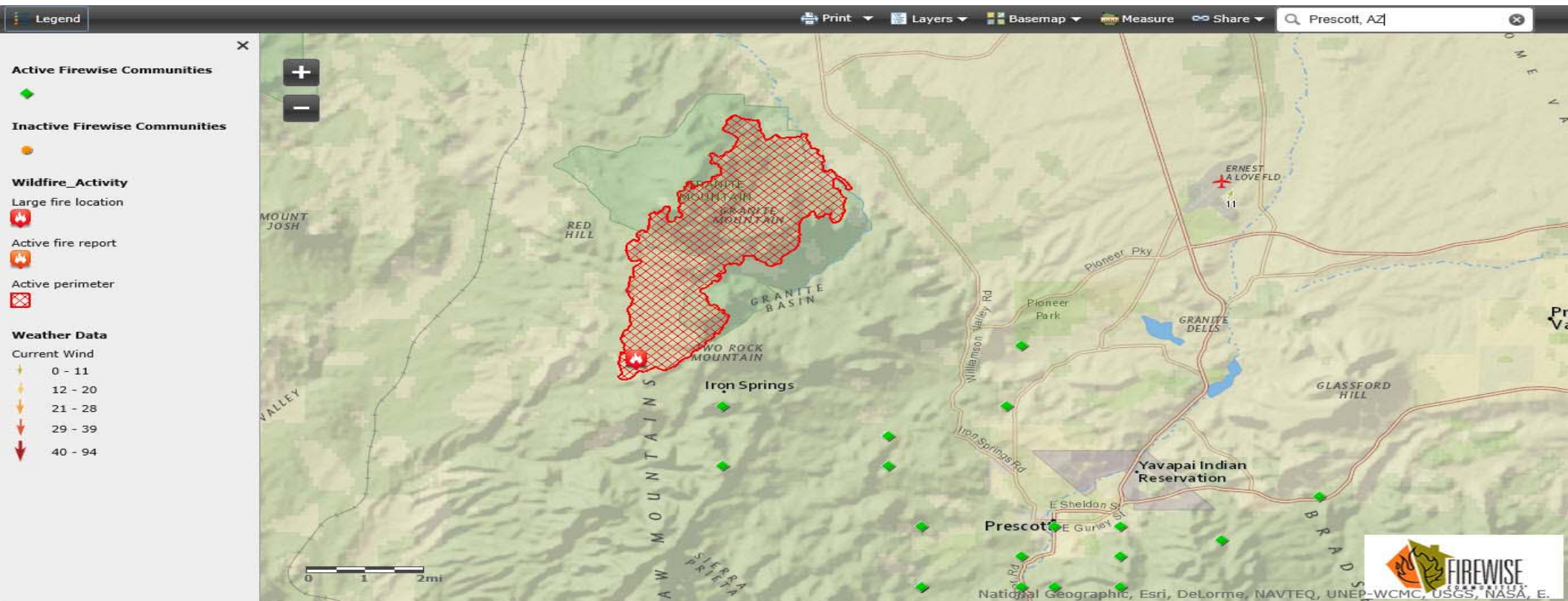


Photo by Mildred E. Winston

Job well done!

- Over 3,000 residents evacuated
- 2,000 homes threaten
- 5 homes lost!
- Everyone returned safely

Tested again!



- Several communities evacuated including Hassayampa Firewise Communities/USA site



Photo by PJ Cathey, PAWUIC Chairperson, Hassayampa FWC/USA Chairperson



Photo by PJ Cathey



Photo by PJ Cathey



Photo by PJ Cathey

Evacuation Order

- You are happy that your community made sure that you have an adequate water supply, maintained roads, visible street signs and well maintained areas around cell towers and other infrastructure.
- It also helps ease your fear knowing that important documents, medicines and personal items such as photos are already packed or in marked containers. You grab your to go bag, a backpack hanging in the closet that is already packed with snacks, first aid and toiletry supplies, pen and paper, bank info, water for 2 days, snacks money , a cd with pictures of the contents of your home, phone numbers of out of state relatives and extra cash.
- Before the evacuation order you have contacted family members in town and have a rendezvous place. You have also crated pets and have water for them. The order is given to evacuate and you start to leave.



Photo by PJ Cathey

Job well done!

- Over 2,300 residents evacuated
- 6,676 acres burned
- Suppression costs to date over \$5.3 million
- Everyone has returned safely
- No homes lost!

Yarnell Hill, Arizona

	Total Structures in Fire Perimeter	Prepared structures (FW Zone 1)	Minimally prepared structures (FW Zone 1)	Unprepared Structures
Pre-fire	503	14	53	450
Post-fire	242 destroyed	0 destroyed	5 destroyed	237 destroyed
Percentage of Structures destroyed	48.1%	0%	9.4%	52.6%

Source: Pacific Biodiversity Institute, July 2013

Caveat: Wikipedia lists that 129 homes were destroyed, September 2013

Esse Quam Videri

- Are you Ready?
- Are you Firewise?
- Is your community working to become more Fire Adapted?

Acknowledgements

Darrell Willis, PFD, Division Chief, Wildland Fire

Ted Ralston, PFD, WUI Code Enforcement Officer

Faith Berry, Firewise Regional Advisor (Southwest 1)



Questions

Hylton Haynes,CF – hhaynes@nfpa.org

www.nfpa.org | www.fireadapted.org | www.firewise.org