

Hunting for Dollars

Keith Worley, Wildfire
Mitigation Specialist,
Forester, Arborist
Foretree Development,
LLC

Grants Fizzling?

- Time line between application and award is still bad.
- Certainty of receipt is going down.
- Restrictions and timelines are often impossible to meet.

Other Resources!

- Homeowners Associations
- Municipalities/Counties
- Special Districts
- Incentive programs
- Private funding

HOA's

- Voluntary
- Mandatory
- Typically budget for all expenses
- Use common area/greenbelts for demos and classes.
- Consider using portion of the grounds/common area maintenance funds for a mitigation project.
- Start small and build up interest.

Municipalities/Counties

- Work with officials at all levels.
- Cultivate relationships with all departments.
- Think beyond the Fire Department.
- Get to know your elected officials.
- Learn the budget cycle and get involved.
- Solid waste management programs are good places for slash/mulch projects.

Example:

- Parks and Open Space Department may receive lottery and/or lotto money for projects.
 - Use for ecosystem restoration.
 - Forestry projects that can be Firewise.
- GIS Department may be able to assist with mapping and aerial photography.

Special Districts

- Fire District
- Water and Sanitation District
- Metropolitan District
- Forestry District (new in Colorado)

Special Districts

- Often operate under the radar screen.
- Have elected boards.
- Assess mill levies for funding.
- Operate under a Service Plan or Intergovernmental Agreement (IGA).
- May have special funds set aside for special projects.

Example

- Westcott Fire Protection District:
 - Uses income from deployments for special projects.
 - Plan to fund hiring a consultant to develop their CWPP with these funds.

Example

- Perry Park Metro District amended its Service Plan to include Wildfire Mitigation.
- An annual budget has been set for the past 8 years for slash disposal, mitigation projects and matching grants.

Soil Conservation District (Natural Resource Conservation Service)

- USDA funds that go un-noticed.
- May fund prevention programs as well as deal with post-fire issues.

Private Funding

- Wal-Mart- \$1,000 grants thru local stores.
- Rural Electric Association
 - Mtn. View Electric Assoc. donates \$1,800
- Big Box Hardware Stores
 - Lowes
 - Home Depot- donated rental equipment
- Contractors- Labor and equipment
- Rental shops

Others

- Realtors
- Banks
- Service Clubs
- Restaurants
- Grocery stores

Don't be afraid to ask

- What can you do for them if they donate?
 - Advertising?
 - Mention in newsletters?
 - Frequent their business?
 - Event sponsor?
- Follow up with thank you letter and pictures from your event.

Chainsaw Class Photo

(on hardware store bulletin board for 3 years)



My Favorite

- Start up contractors doing mitigation and mastication work.
 - Check on qualifications and training.
 - Check references and past work.
- Examples:
 - Dove Creek Enterprises- free demo of equipment at Extreme Gardening class.
 - Rampart Arbor Service- Provided chipping for classes, along with serving as my Vanna White.

Examples

- Home Depot waived rental fees for chipper, brush mower and stump grinder for a class. Value: \$275
- Seedmasters waived hourly equipment rate for mastication on a special project at troubled youth center. Value: \$2,500

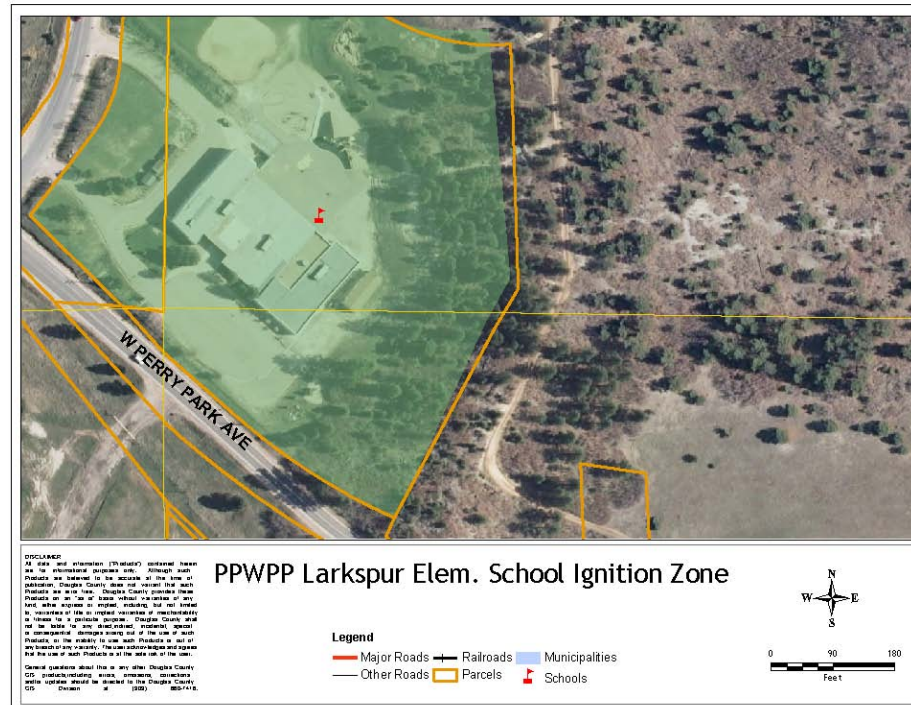
NGO's (Non-Gov. Org.)

- Coalition for the Upper South Platte
 - Mitigation for elderly homeowners.
 - Chipping program and crew
- Southern Rockies Conservation Alliance
 - Assists communities with CWPP's.
 - Provides mapping/GIS assistance.
- Pikes Peak Wildfire Prevention Partners

PPWPP Volunteer Project

- Objective to install home ignition zone around Larkspur Elementary School.
- Volunteer Labor:
 - Project Photographer
 - Sawyers
 - Slash Engineers
- Machine Time with operator at billable rate.
- Donated items: Pizza, fuel, beverages.

Project Area, 2 acres



Larkspur Elem. School



Project Value

- Contractor time: \$2,000
- Donated:
 - Fuel \$300
 - Pizzas \$72
 - Beverages \$25
- Hours:
 - Volunteers 64 hrs. at \$20.85 = \$1,334
 - School kids 200 hrs. Priceless!
- Total "Free" project value: **\$3,731**

Emily Griffith Center



Facilitated Self Funding

- Takes someone to coordinate the project.
- Willing contractor to provide discount rate for getting the business. “Bundling of services at negotiated rate” to:
 - Waive mobilization fees and hourly minimums.
- Cooperation with HOA, Design Review (Architectural Control), and Fire Dept.
- Willing homeowners.

Totem Run Project

- 8 homes on 9 lots in a heavy fuels (Gambel oak) area with steep slopes.



Totem Run Project Summary

- Architectural approval obtained as one project.
- Contractor agrees to bill for exact time spent on each property at \$165/hour.
- Each homeowner met with a fire official and forester.
- Neighbors met to coordinate privacy issues.
- HOA expenditure: \$00

Other “Facilitated” self funding projects

Patrick Kelly



Neal Pocock



Class Assistance

- Extreme Gardening class set for Sept. 8th.
- Mastication Contractor donates one hour of time to demo equipment and hand out business cards.
- Mitigation contractor offers chipper and hand crew. Contractor teaches part of the class and hands out business cards.
- Home Depot waives rental charges.
- HOA donate site. Cost to HOA: \$00

Woodlands-Escavera CWPP Project and Class





Donated items used for prize drawings at classes



Free Contractor Time for Classes



Non-Profits

- Boy Scout Eagle projects
 - Fences built.
 - Areas cleaned up.
 - Signs made and installed.
- Churches.
- Band fund raisers.
- High School Community Service hours.

Use what you have for “Seed Money”

- Use for chipping or other slash disposal.
- Fund demonstration project in conjunction with class.
- Use fire fighters for project as training.
- Sponsor a cookout and work project.
- Community events

Suggestion

- Use any funds for projects that benefit the community as a whole.
- Be careful of providing service to only one lot owner.

In-kind = Free Money?

- Be a Firewise Community!
- Use to leverage funds.
- Use as match to any type of grant.
- Even with no grant, a good practice to follow.
- Plus, use it for your FWC per capita expenditure.

Tracking Time and Money

- Set up in-kind tracking for all projects.
- Sets up a good policy and practice for when you receive grant funding.
- Have a clipboard at every event.
- Assign this task to someone.
- Mail to all community members/owners as part of your regular mailings.
 - Consider a bulk mailing permit!

Track

- Names
- Addresses
- Phone numbers
- Hours worked and dollars spent
- Sets up paperwork for future grants

Overlooked Hours

- Board and Community meetings:
 - Be sure to get a copy of the sign-in sheet.
 - Example: 20 people attend, discuss Firewise program for ½ hour = 10 hours @ \$20.85/hr = \$208.50 of in-kind match.
- Classes:
 - Everyone signs in including the instructor.
- Meetings with fire dept. and agencies.



MEETINGS

NONE OF US IS AS DUMB AS ALL OF US.

Other Freebies

- On line mapping services
 - Google Earth
 - MapQuest
- Assessor Office mapping
 - Often on-line accessible
 - May be layered on aerial photos



DISCLAIMER

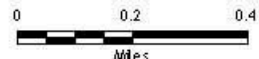
All data and information ("Products") contained herein are for informational purposes only. Although such Products are believed to be accurate at the time of publication, Douglas County does not warrant that such Products are error free. Douglas County provides these Products on an "as is" basis without warranties of any kind, which includes, but is not limited to, warranties of title or implied warranties of merchantability or fitness for a particular purpose. Douglas County shall not be liable for any direct, indirect, incidental, special or consequential damages arising out of the use of such Products, or the inability to use such Products as a result of any breach of any warranty. The user acknowledges and agrees that the use of such Products is at the user's risk.

General questions about this or any other Douglas County GIS products including errors, corrections, comments and/or updates should be directed to the Douglas County GIS Division at (303) 685-7418.

Hidden Village-1

Legend

- Major Roads
- Other Roads
- Parcels
- Railroads
- Municipalities
- ▲ Schools





Incentive Programs

- Colorado State income tax deduction for 50% of mitigation expenses up to \$2500.
- HOA enabling legislation:
 - Allow homeowners to mitigate in covenant controlled communities.
- Insect and Disease Control Funds that can meet multiple objectives such as wildfire hazard reduction.



LIMITATIONS

UNTIL YOU SPREAD YOUR WINGS,
YOU'LL HAVE NO IDEA HOW FAR YOU CAN WALK.



Grants Hints

(Playing the Word Game)
Keith Worley

Look for Buzz Words

- Incorporate current “scientific fuels reduction and management techniques.”
 - List criteria you will follow.
- “Reducing the threat of large, high-intensity wildfires.”
 - What fuel treatments are you implementing?
- “Creating defensible spaces or HIZ’s”

“Include a diverse group of stakeholders”

- Government
 - Federal (USFS, BLM, NRCS)
 - State (Forest Service, OEM, Air Quality)
 - Local
 - City (Mayor’s Office, Parks/Open Space)
 - County (Public Works, Parks/Open Space)
 - Emergency Services (OEM and Fire)
 - Special Districts
 - Water providers

Emergency Services

- Fire Department:
 - Chief?
 - Fire Marshal?
 - Fire Prevention Officer?
 - Local Station Crew?
- City or County Emergency Management
 - Local programs like CERT
 - Coordination with Ready! Set! Go! education
- Law Enforcement

Other Partners

- Utility providers such as power companies.
- Adjacent landowners and HOAs.
- School district
 - Can K-12 kids be incorporated into the program?
- Universities
 - Cooperative Extension

“Letters of Support”

- Personal phone call critical.
- Write a “boiler plate” letter for them to put on their letterhead.
- Include how they have worked with you in the past.
- Allow enough time if public meetings required.
- Follow up with “Thank You” Letter or card.

Include the grant title you are applying for.



September 29, 2009

Stanley R. Lewandowski, Jr.
General Manager

Colorado State Forest Service
CSFS ARRA Program Manager: Terrie Craven
3843 West LaPorte Avenue
5060 Campus Delivery
Fort Collins, CO 80523

Dear Ms. Craven:

Intermountain Rural Electric Association (IREA) is pleased to offer its support and partnership in the ARRA grant requests being submitted by Perry Park Metropolitan District (PPMD). As a participant in past PPMD projects, we look forward to the opportunity to participate in the continued efforts to reduce wildfire risks in Perry Park.

IREA currently operates and maintains many miles of overhead and underground electrical facilities in Perry Park that will be severely impacted by a destructive wildfire in the community. We support the proposed fuel treatments along our easements as a way to significantly reduce damage or destruction of this critical utility. IREA has an ongoing program of line maintenance to reduce losses to both storms and wildfire. We suffered huge losses to the Hayman Fire in 2002, which is also within our Association service area. IREA knows and appreciates what wildfire can do.

Please let me know if you have any questions. I can be reached through my Assistant, Becky Wilson, at 303-688-3100, ext. 155.

Sincerely,

INTERMOUNTAIN RURAL ELECTRIC ASSOCIATION

Stanley R. Lewandowski, Jr.
General Manager

SRL/bw

INTERMOUNTAIN RURAL ELECTRIC ASSOCIATION
2488 North U.S. Highway 95 / Sedalia, Colorado 80135
Telephone (303) 688-3100



David A. Weaver, Sheriff

September 22, 2009

Colorado State Forest Service
CSFS ARRA Program Manager: Terrie Craven
3843 West LaPorte Avenue
5060 Campus Delivery
Fort Collins, Co 80523-5060

Dear Ms. Craven:

The Douglas County Sheriff's Office of Emergency Management (OEM) is pleased to offer its support and partnership in the ARRA grant requests being submitted by Perry Park Metropolitan District (PPMD). Perry Park has established a strong working relationship with us over the years to mitigate wildfire hazards in Perry Park.

Our partnership has yielded the following:

1. Developed the first Community Wildfire Protection Plan (CWPP) in Douglas County. We attended all partnership meetings and provided input into the final plan adopted in 2005. We are pleased to see the aggressive manner in which they are implementing the plan.
2. Worked toward providing a secondary emergency egress route for the community in the event of a wildfire evacuation threatening the immediate area. Construction of the new route is now in progress.
3. Established the first Community Emergency Response Team (CERT) program in the county with Perry Park volunteers.
4. DCSO officers regularly attend PPMD board meetings to aid with crime prevention, speeding issues and updates on emergency issues.
5. Participated in numerous community meetings over the past eight years to provide updates on emergency egress, evacuation, emergency notification, and wildfire preparedness.
6. PPMD is one of the few communities that have begun development of a multi-hazard plan as an offshoot of its CWPP and Firewise program.

Your support through award of an ARRA grant to the Perry Park Metropolitan District will aid them in furthering their efforts to become more Firewise.

Please let me know if you have any questions. I can be reached at 303-660-7500.

Sincerely,

Fran Santagata
Director, DCSO
Office of Emergency Management

cc: Keith Worley

Robert A. Christensen Justice Center
4000 Justice Way
Castle Rock, CO 80109



Leadership ★ Integrity ★ Service Excellence

303.660.7505
www.dcsosheriff.net
dcsos@douglas.co.us

“ Natural Resources ”

- Reducing the threat of large, high-intensity wildfires.
- Reducing the negative effects of excessive competition between trees by restoring ecosystem functions, structures and species composition.
- Including the reduction of non-native species populations.

“Watersheds”

- Impacts from sediments and ash runoff to:
 - Reservoirs
 - Streams
 - Fisheries
 - Water quality
 - Shallow alluvial wells
 - Public drinking water

“Critical Infrastructure”

- Power lines
- Water and sewer treatment facilities
- Sewer lift stations
- Electrical substations
- Phone, cable, natural gas
- Roadways:
 - Culverts
 - Low points and ditches

“ \$\$ Value Protected ”

- Assessor valuation of homes.
- Infrastructure costs for repair or replacement.
- Commercial:
 - Businesses affected
 - Jobs lost
- Tax base losses.

“Leveraging of Funds”

- Will the grant amount result in both cash and in-kind match by others?
- Who might they be?
- Set higher than the match called for in the grant.
- Example: \$10,000 grant with 50:50 match required. Say will match at 2:1 with HOA and homeowner hard costs and time commitment. Project value= \$30,000
- Should be easy to match 2:1 or 3:1

“Improve Fire Fighter Safety”

- How?
 - Think LACES and how you can enhance these:
 - Lookouts
 - Awareness
 - Communications
 - Escape Routes
 - Safety Zones
 - Water Supplies?
 - Can fire be used as a defensive tool upon completion of treatments?

SMOKEY'S FRIENDS DON'T PLAY WITH MATCHES



THEY PLAY WITH DRIP TORCHES

“Forest and Ecosystem Health”

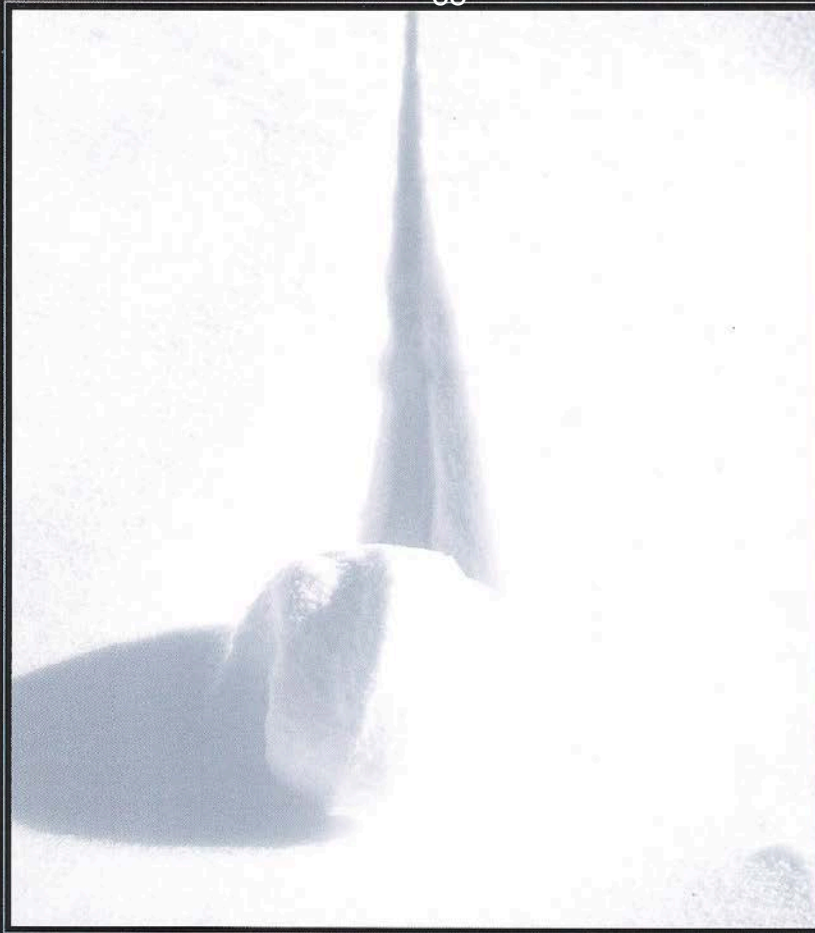
- Forest management specifications to be followed to:
 - Improve tree and forest health;
 - Insect and disease resistance.
 - Reduce risk of catastrophic wildfire.
- Types of habitats to be protected.
 - Be careful if endangered species present.
 - Must have pre-approval by USFWS.

“Maintenance”

- How will you maintain the treated area?
 - Mowing?
 - Periodic clearing?
 - Re-entry for thinning?
 - How often?
 - Control of Noxious Weeds?
- Who will do maintenance?

“ Utilizing Forest Products”

- Firewood (cords or cubic feet)
- Poles (cords, tons, lineal feet)
- Saw logs (board feet)
- Chips (tons or cubic yards)
- Mulch (tons or cubic yards)
- How will this positively impact the local economy?



TEAMWORK

A FEW HARMLESS FLAKES WORKING TOGETHER CAN
UNLEASH AN AVALANCHE OF DESTRUCTION.

Keith Worley,

Forester, Arborist, Wildfire Mitigation Specialist, and
Land Development Consultant

Forestree Development, LLC

7377 Osage Road

Larkspur, Co 80118

Phone: 303-681-2492

Email: forestreedev@aol.com

(be sure to use "firewise" in the subject line)