

Citizen Fire Academy

Increasing the Outreach Capacity of Wildland Fire Agencies through Education and Volunteer Service

Rhianna Simes
OSU Extension
Southern Oregon



Steve Fitzgerald
OSU Extension
Central Oregon

Max Bennett
OSU Extension
Southern Oregon

Who is NFPA – Quiz!!

When was NFPA established?

Who is the NFPA president?

Who is ‘Sparky’?

Name one NFPA initiative?

How many ‘likes’ does Sparky have on Facebook?

What does LNTB stand for?

How old is Sparky the Fire Dog?



National Fire Protection Association
The authority on fire, electrical, and building safety

- in 1896.
- James M. Shannon was named NFPA President and CEO in 2002
- Sparky the Fire Dog
- Firewise, Fire-adapted communities, Fire-safe cigarettes, or Fire sprinklers
- Over 4,000
- Learn Not To Burn
- 60 years old

Who is Oregon State University Extension?



1914-Smith-Lever Act:

- Passed by Congress to establish Extension Service offices in every county across the nation.

Mission of Extension:

- To extend the knowledge and resources of the Land Grant University by delivering objective, research-based information that helps stakeholders to implement new technology and solve problems



Extension programs: Education and Service

- Examples of other Extension programs



OSU Extension



Land Steward

Oregon State
UNIVERSITY

Citizen Fire Academy Overview



- **Goals-** develop a curriculum to train volunteers to support local wildfire prevention efforts, increase Firewise outreach, and enhance fire-adapted communities.
 - **Building human capacity for agency outreach efforts**
- **Audience-** homeowners living in (WUI), community leaders, volunteer firefighters, and anyone interested.
- **Interactive curriculum-** both classroom and field-based
- **Training-** 30+ hours of instruction by local professionals
- **Volunteer Service-** to support and expand local efforts already occurring in communities across Oregon

Other Citizen Fire Academy (CFA) programs:

Examples:

- Tennessee
- Texas
- Others

-Programs are aimed at technical skills trainings

-Recruitment for volunteer Fire Departments

-General emergency response



Oregon's Strategy:

Build human capacity for agency outreach efforts related to wildfire



Communities at Risk of Wildfire



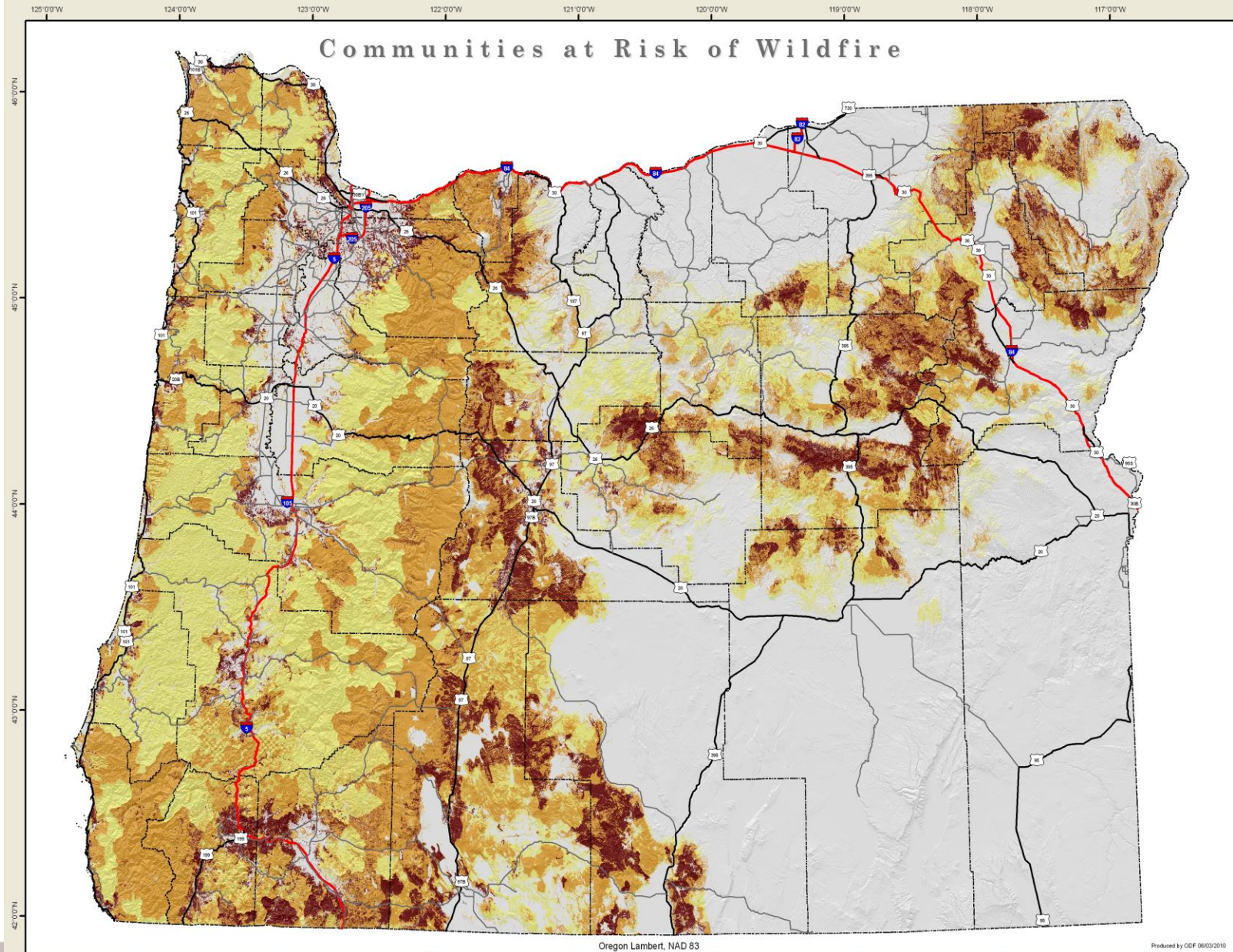
Priority Landscapes

- High
- Medium
- Low
- County Lines

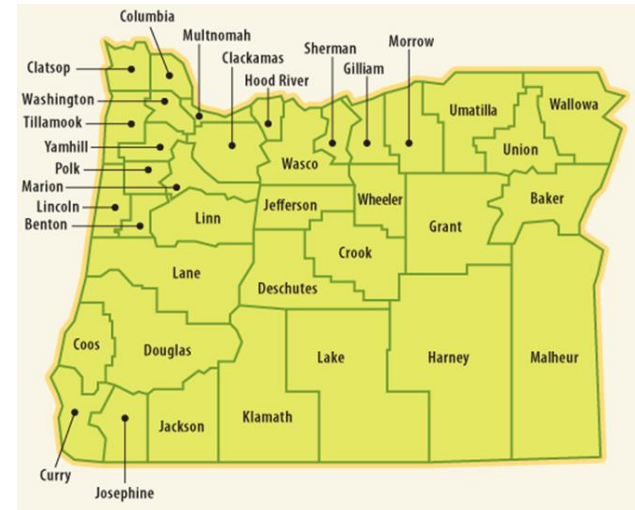


Oregon
DEPARTMENT OF
FORESTRY
2600 STATE STREET
SALEM OR 97310
503.945.7200

This product is for informational purposes, and may not be suitable for legal, engineering or surveying purposes. This information or data is provided with the understanding that conclusions drawn from such information are the responsibility of the user.



Summer 2013 in Southern Oregon



Southern Oregon, Summer 2013

August 1, 2013 at 12:12 PM

Wildfire smoke causes cancellations at Ashland fest

Posted by [Melissa Davis](#)



See? This is what the Shakespeare fest is missing about. Shown here is smoke from wildfires near Grants, Ore. Oregon Dept. of Forestry.

The wildfires burning in Southern Oregon — lightning strikes ignited a string of blazes now totaling more than 30 square miles — have prompted that state's governor to declare a state of emergency and the **Oregon Shakespeare Festival** to take emergency action of its own: cancellations of outdoor performances and pre-show talks. Tuesday performances of "Cymbeline" and "The Heart of Robin Hood" were canceled at the Elizabethan Theatre, and more.

Visual proof of the need for CFA



Citizen Fire Academy Partners:

- OSU Extension Service
- Oregon Department of Forestry
- Project Wildfire
- NFPA/Firewise
- Rural Fire Districts
- U.S. Forest Service
- Rogue Valley Wildfire Prevention Cooperative
- Home Owner Associations
- Soil & Water Conservation Districts
- NW Fire Science Consortium
- Other community groups

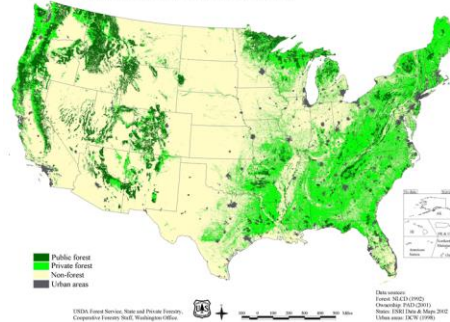


CFA Funding:

- Awarded an Oregon Department of Forestry State and Private Forestry Competitive Grant, 2013 \$159,724 = 3 years of funding
- Awarded Hoecker Innovation grant, OSU 2012
- Start up funds provided by NW Fire Consortium, and PNW Research Station



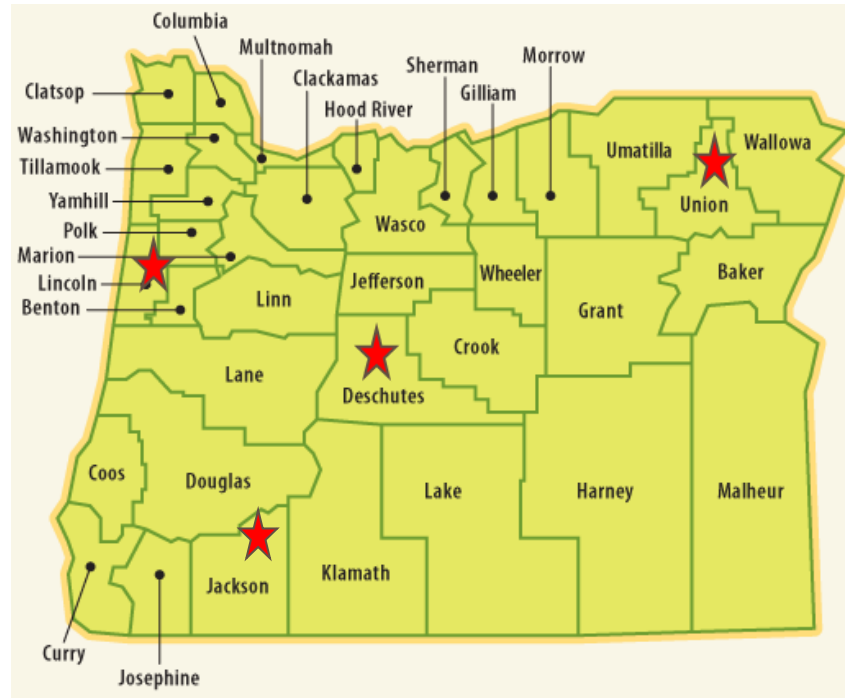
Forest Land Ownership
This map displays the basic vegetation (forest vs. non-forest) of the conterminous United States as well as ownership (private vs. public). The lands displayed as "public" include Federal and State lands but do not generally include lands owned by local governments and municipalities.



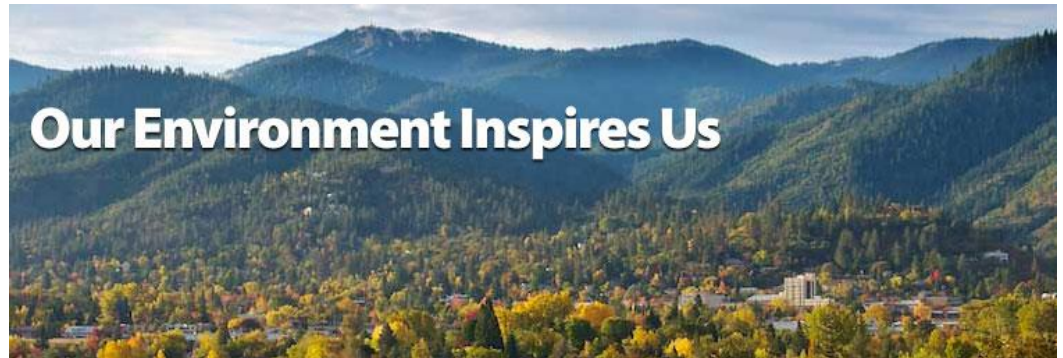
Needs Assessment: Regional Meetings



- Talked to our partners: What can CFA do for you?
- Why? – create investment, consistent messaging, networking
- ★ = location of regional meeting, host for CFA training



Southern Oregon



- Rogue Valley Fire Prevention Co-op
- Updated CWPPs
- SB 360 area
- Fire Commission established
- Large outreach effort
- Firewise communities
- Active Extension volunteers
- Annual fires



Central Oregon



- Updated CWPPs
- SB 360 area
- Large, & sustained outreach effort
- Active Extension volunteers
- Firewise communities
- Many homeowner associations
- Strong partnerships
- Many fires



North East Oregon



- Updated CWPP
- SB 360 area
- Limited outreach ability
- Large counties = 1.9 million acres
- ‘Middle of no where’= very rural
- Active Extension volunteers
- Not many homeowner associations
- Very prone to large wildfires



Coastal Oregon



- Updated CWPP
- Not a SB 360 area
- Large outreach effort beach safety
- Active Extension volunteers
- 2 Firewise communities
- ‘Either run towards or away from the beach’
- Limited outreach capacity
- Many renters, & vacation homes
- Perception that it doesn’t burn



Similarities among regions:



- Local agencies are over-worked and under-paid
- Insufficient staff for large outreach needs
- The diverse Oregon audience, and perceptions about wildfire
- Many varied skills needed to get word out needed
- During fire events, staff overwhelmed, unable to meet needs
- Trained CFA volunteers can offer support
- More receptive to neighbors
- Large rural areas



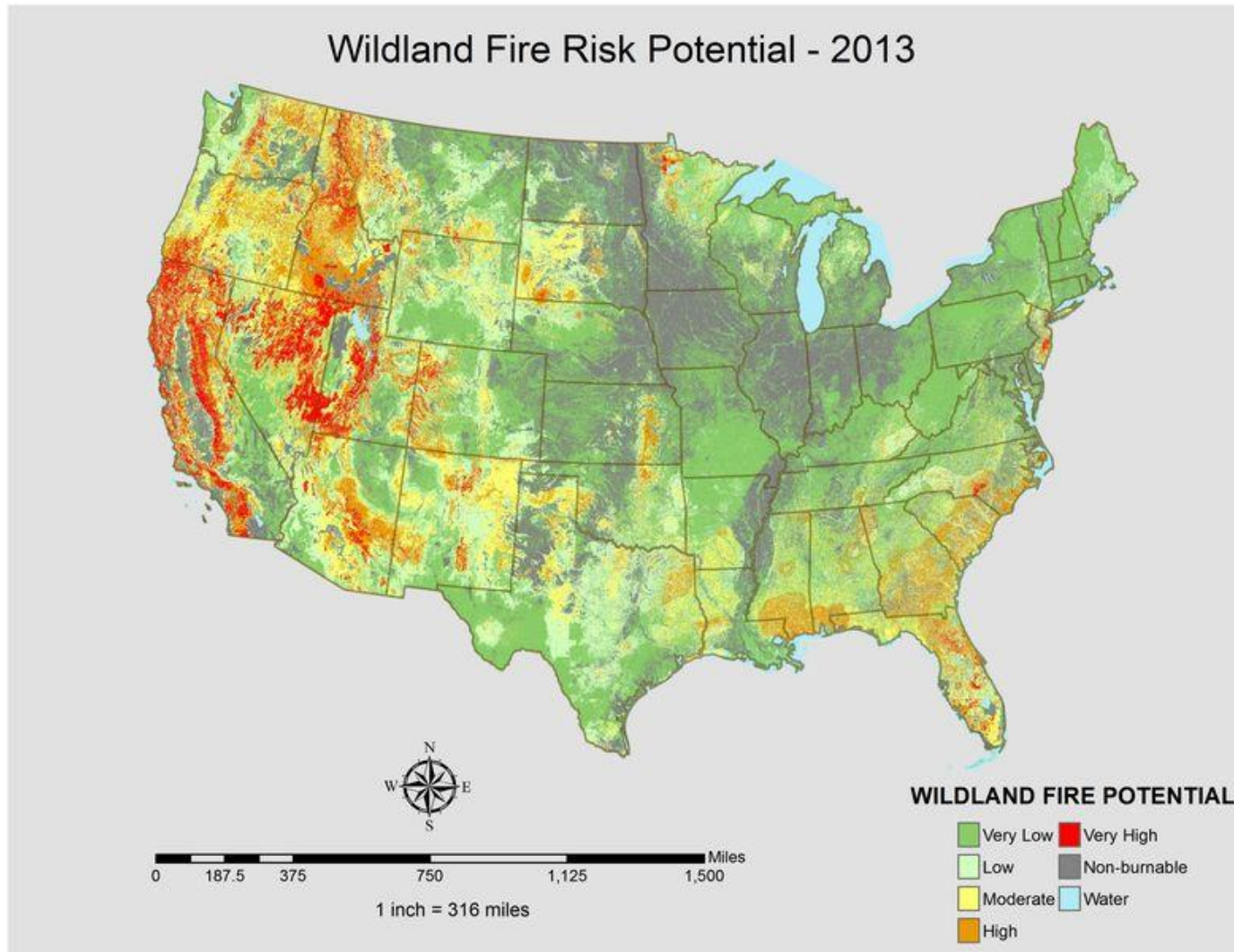
Differences between regions:



- Southern and Central OR, threat of wildfire is real and present
- Coastal OR, not overly concerned with wildfire
- Types of residents (HOA, renters, vacation homes)
- Amount of outreach support staff
- SB 360 county or does not apply



Outreach and Education Needs Extend across the West

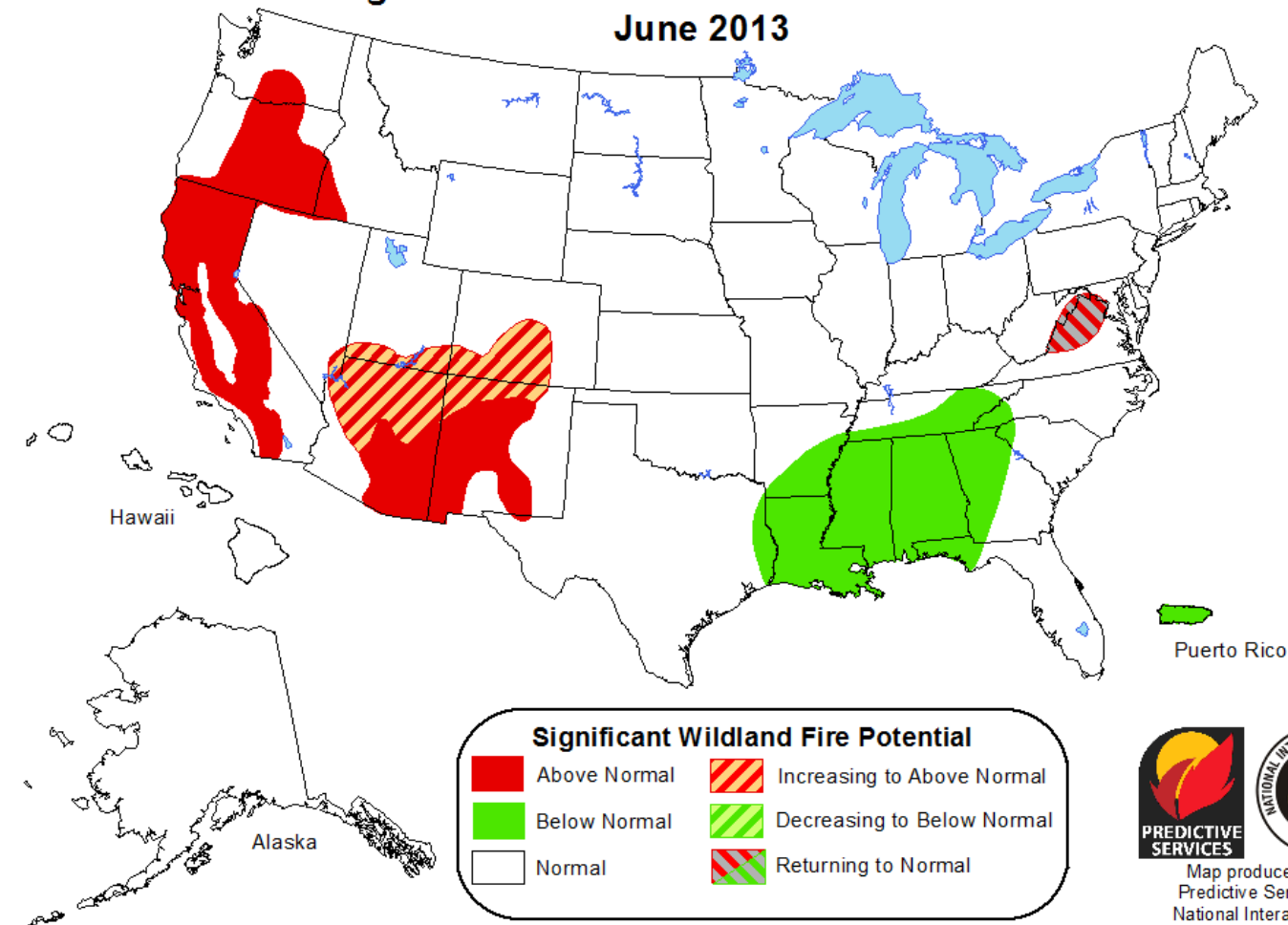


20

Wildfires Burning in 11 Western States (Aug. 2013)



Significant Wildland Fire Potential Outlook June 2013



Above normal significant wildland fire potential indicates a higher than usual likelihood that wildland fires will occur and/or become significant events. Wildland fires are still expected to occur during forecasted normal conditions as would usually be expected during the outlook period. Significant wildland fires are still possible but less likely than usual during forecasted below normal periods.



Map produced by
Predictive Services,
National Interagency
Coordination Center
Boise, Idaho
Issued May 1, 2013
Next issuance June 1, 2013

Discussion:



- How could trained CFA volunteers help outreach and educational efforts in your area?
- Are there needs in your area?
- Are there other projects, or events, from your area that could be replicated by a trained CFA volunteer?
- Ideas or discussion



Needs drive the curriculum:



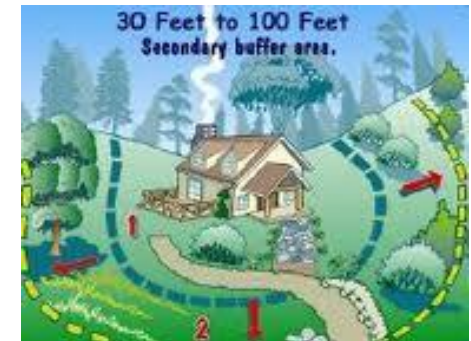
Develop curriculum by answering:

- What do volunteers need to know in order to be able to complete the tasks that are needed in their communities?
 - What information and skills do they need to learn in order to be effective volunteers?
-
- Make sure that volunteers are prepared to implement what they have learned
 - Curriculum designed to inform and empower
 - Blending consistent messaging with taking time to recognize regionally specific details



Potential Training Content:

- Fire science
- Fuel reduction strategies
- Defensible space
- Fire resistant homes & landscapes
- Evaluating fire risk around homes & neighborhoods
- Understand applicable fire laws & regulations
- Community wildfire protection plans
- Evacuation planning and know how
- Effective volunteering
- And more!



➤ We want to utilize as much existing educational materials on Firewise concepts as possible and adapt it to Oregon.

Citizen Fire Academy Volunteers:



- Will be encouraged to volunteer their time by:
 - Engaging neighbors and others about Firewise concepts
 - Encouraging homeowners to implement Firewise practices to meet State and Community Wildfire Protection Plans
 - Sharing defensible space standards
 - Talking with community groups about evacuation plans, the Home Ignition Zone, and other wildfire safety measures
 - Assist fire agencies with a myriad of educational events
- **The ultimate goal is to reduce wildfire hazards and risk within the Wildland Urban Interface, and to reduce home loss, and prevent loss of life.**

CFA volunteer contributions:

- Host presentations
- School events
- Assist during wildfire events
- Outreach in community
- Recruit for Firewise
- Staff information tables
- Create outreach materials
- Organize neighbors
- And others



Oregon State
UNIVERSITY

The need to build capacity for outreach efforts grows!

2013 U.S. Wildfire Risk: high and very high risk



Next Steps:



- Focus groups with potential volunteers
 - To learn what volunteers will find attractive about the program
- Host Curriculum Retreat to develop CFA training materials
 - We have a general content outline and have developed learner objectives
- Plan, promote, and host Spring CFA training
 - Likely held in Southwest Oregon



Thank you!



Questions or additional comments please email or call:

❖ Rhianna Simes

Citizen Fire Academy Coordinator

Rhianna.simes@oregonstate.edu

541-776-7371