

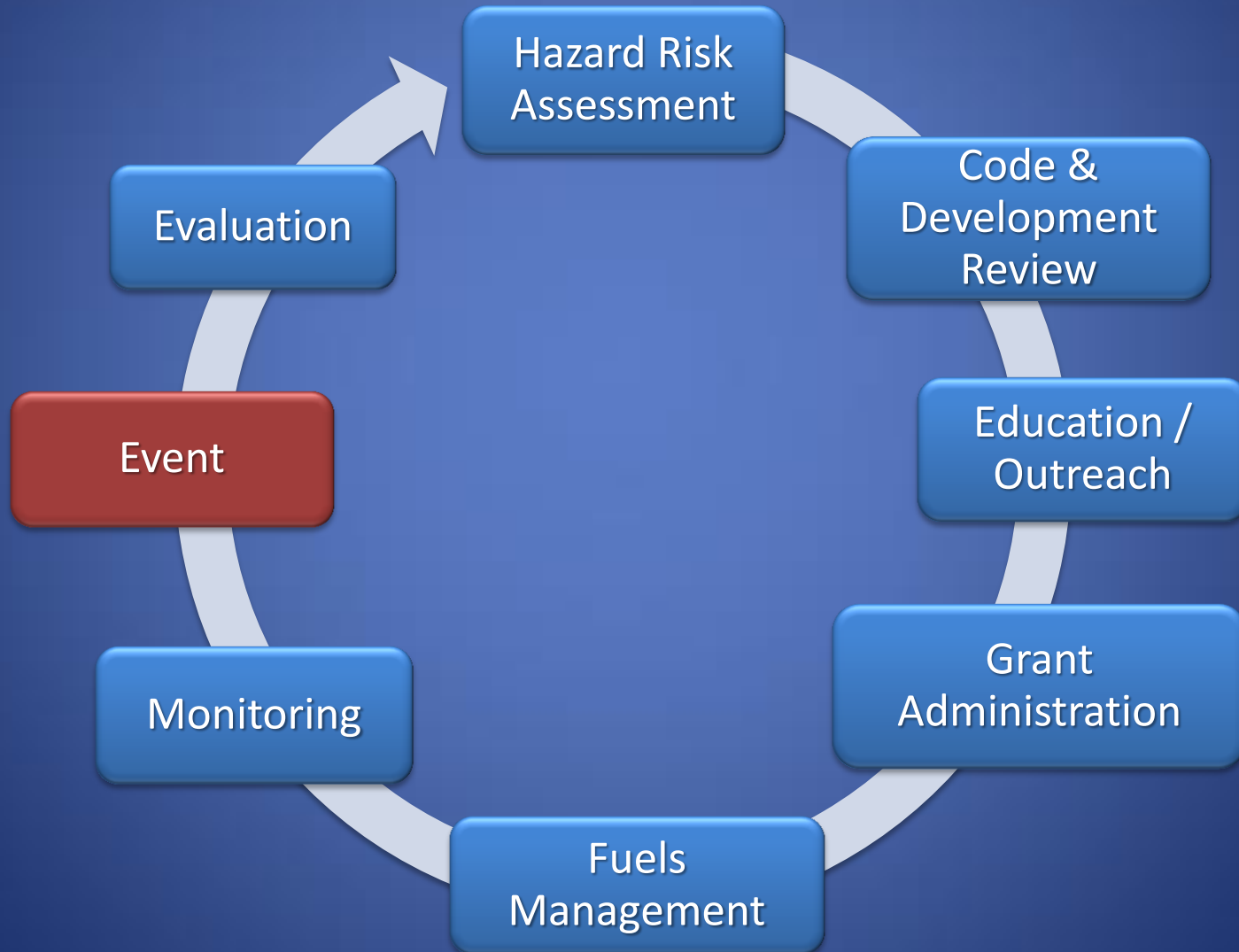
# WALDO CANYON FIRE : POST-FIRE MITIGATION REVIEW



Amy Sylvester  
Program Coordinator  
Wildfire Mitigation Unit  
Colorado Springs Fire Department

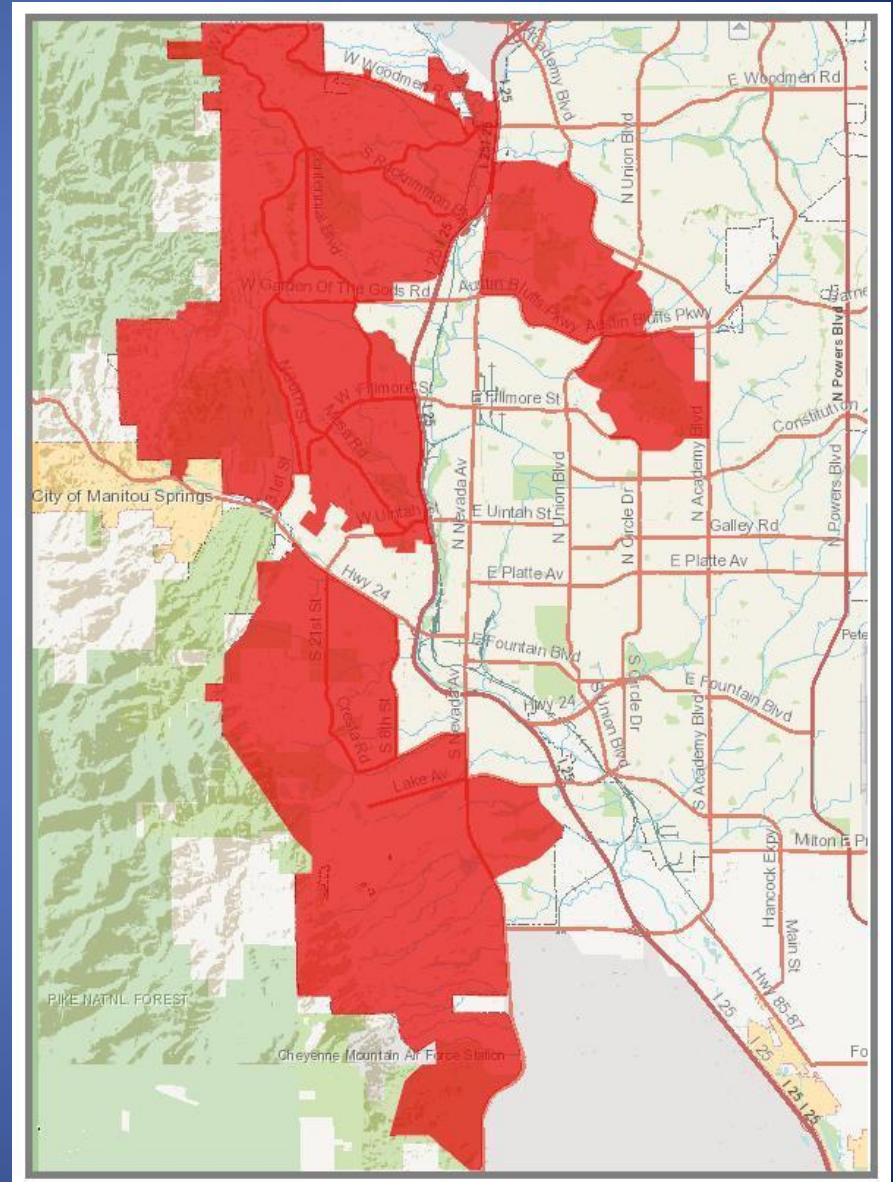


# Colorado Springs Fire Department Wildfire Mitigation



# City of Colorado Springs

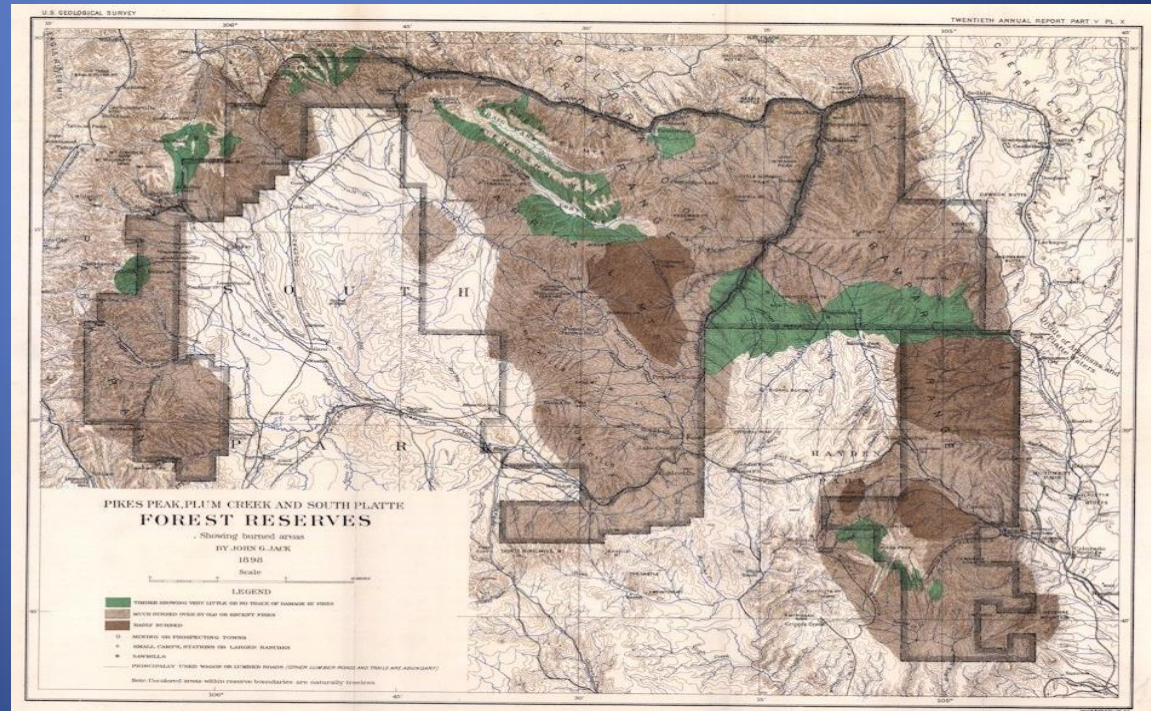
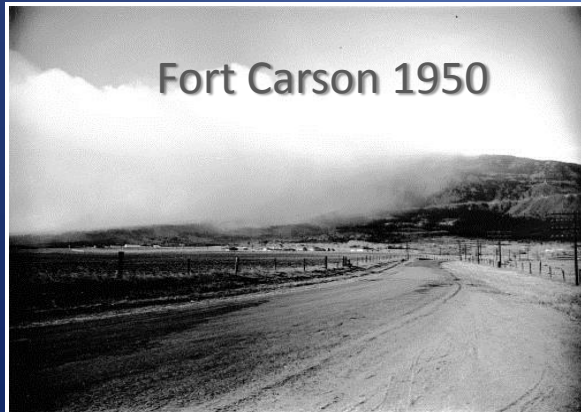
- 416k+ residents
- Military
  - USAFA
  - CMAFS (NORAD)
  - Fort Carson
  - Peterson/Shriever AFB
- 28,800 acres
- 36,485 homes





# Fire History

- Big Burn of 1854
- Westwood Fire 2005 (35 ac)
- Manitou Incline Fire 2007 (30 ac)
- TA 25 Fire 2008 (1000 ac)







# Code and Development Review

- Enforcement
- Front end of new development
- Hillside Ordinance
- Building characteristics
- Class A Roofing Ordinance



# Education Outreach

- Neighborhood meetings
- Onsite Consultations
- Volunteer Projects
- Information Packet
- Champion Recognition





# Grant Administration

- \$2.7 + mil
- \$1.9 mil pending
- Funding Sources

## Private Foundations



## Local / Corporate



## State / Federal



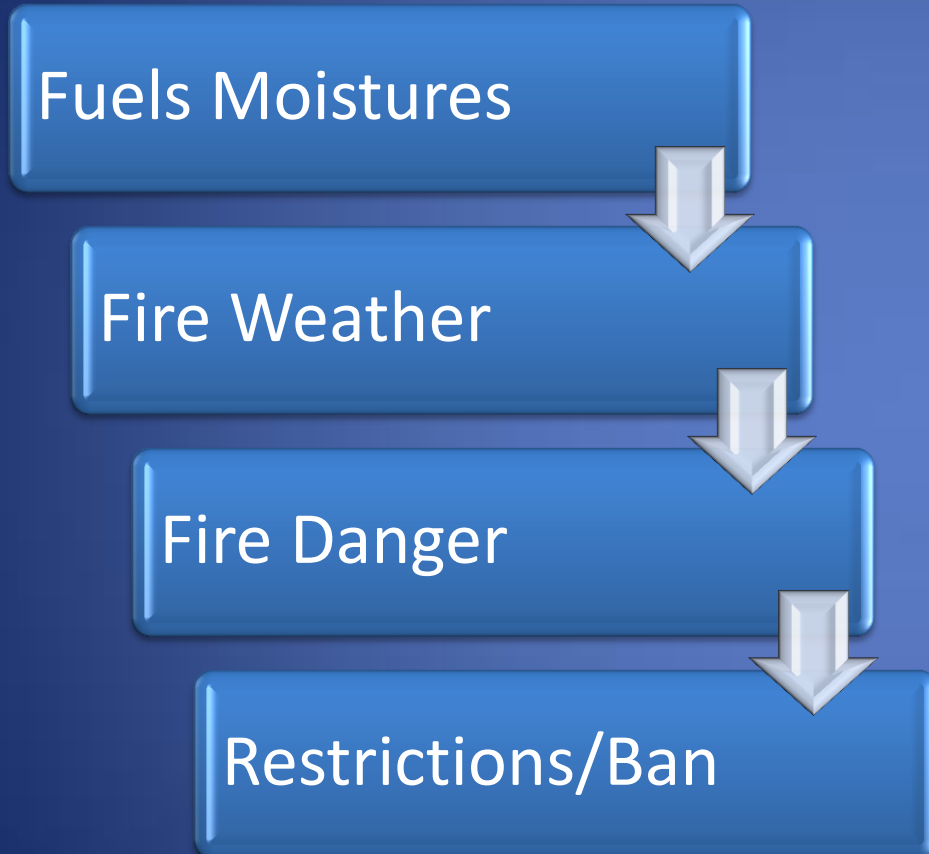


# Fuels Management

- Neighborhood Chipping
- Seasonal Crew
- Contracting
- 5824 ac



# Monitoring

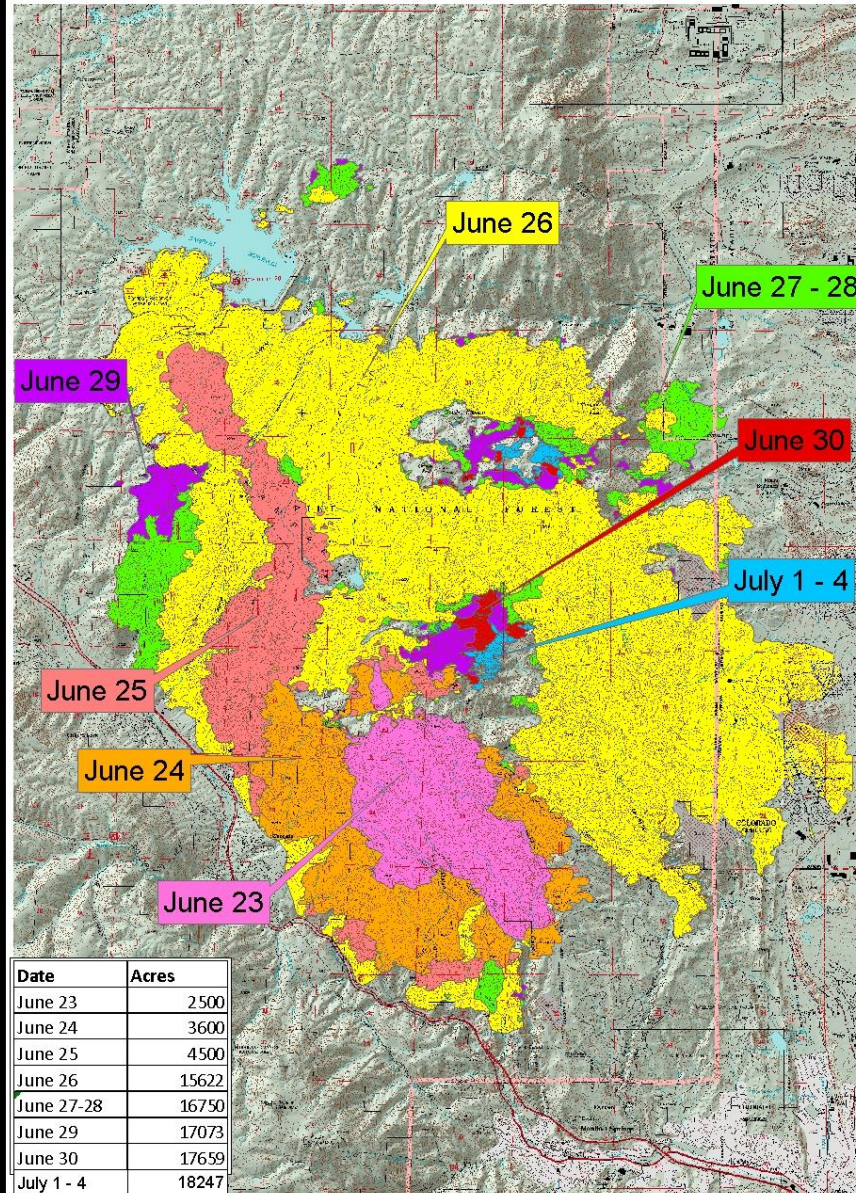




# Waldo Canyon Wildfire June 26, 2012

## Incident Progression Map

Waldo Canyon Fire Progression June 23 - July 4, 2012



0 0.5 1 2 3 4 5 Miles





# Waldo Canyon Wildfire Mountain Shadows Neighborhood

## Initial findings:

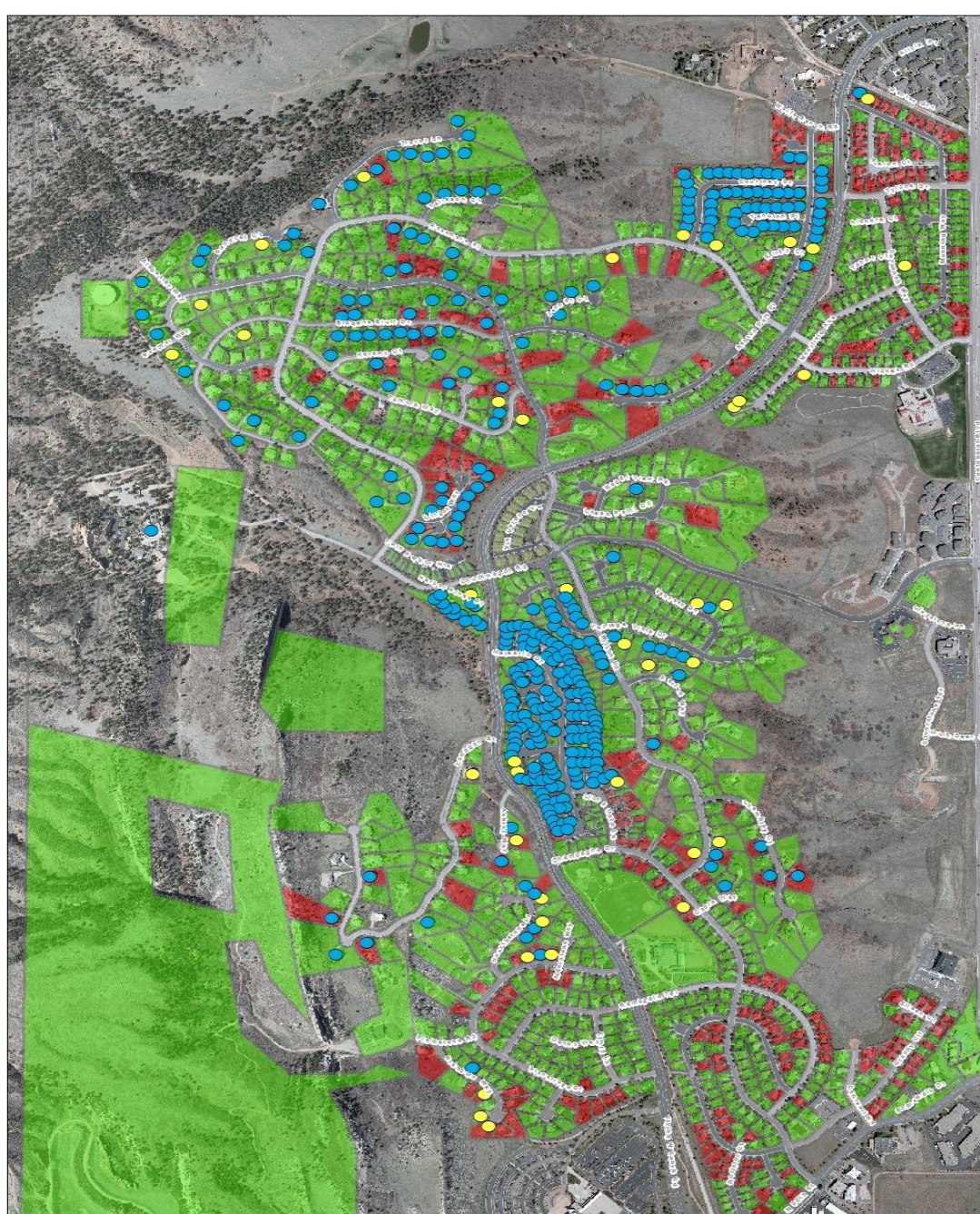
- Fuel loading
  - ✓ Cedar Fencing
  - ✓ Roofs
  - ✓ Decks
- Exposures
- Conflagration





# Roof Type

- Red - Combustible
- Green – Class A



Date: 7/11/2012  
Source: Waldo\_Firewise\_RoofType\_1107\_2\_8\_12

Waldo Fire Wise  
Roof Type



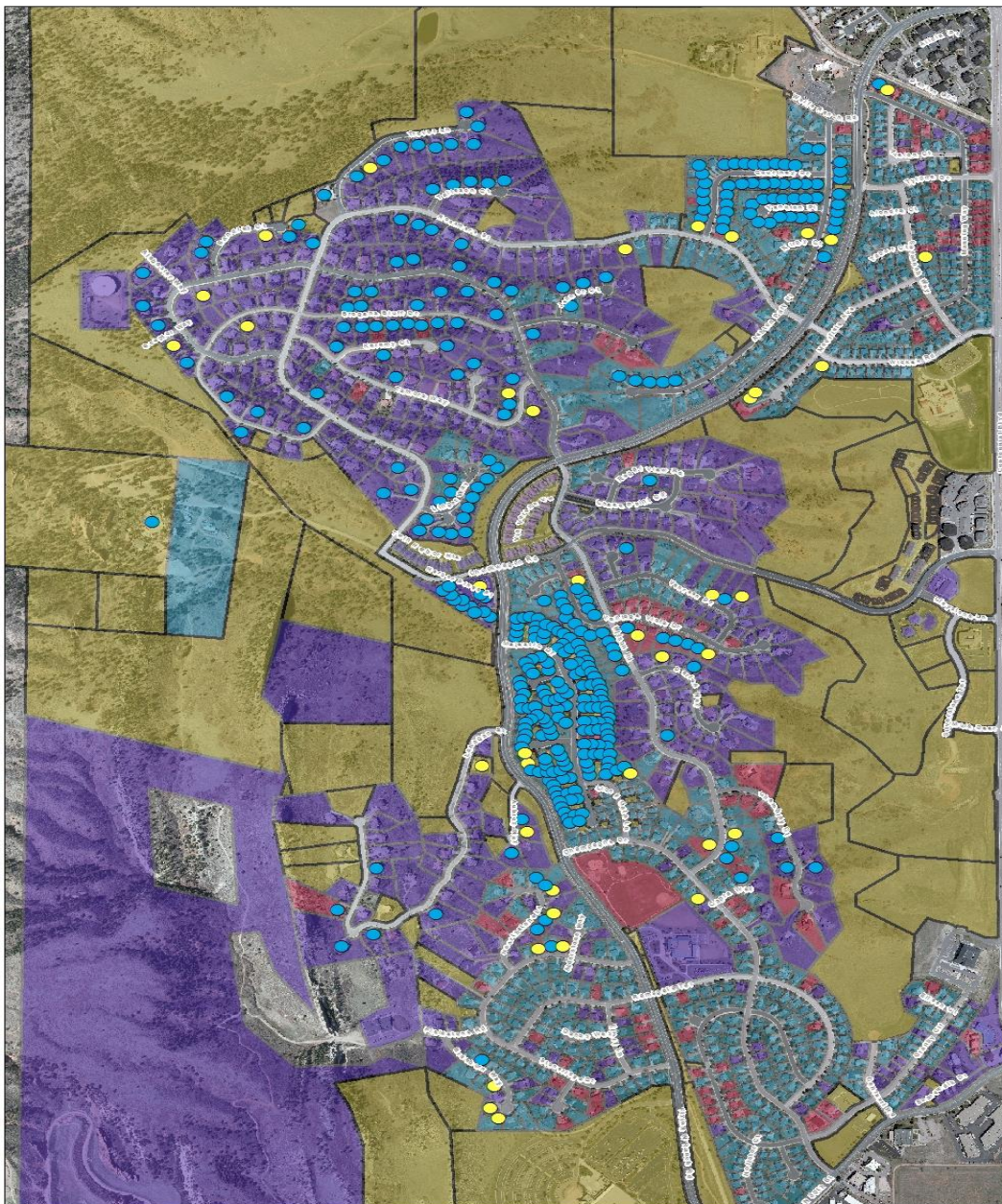
Roof Type  
No Structure  
Class A  
Combustible





# Siding

- Purple – Masonry, concrete or stucco
- Light Blue – composite lap
- Pink – wood



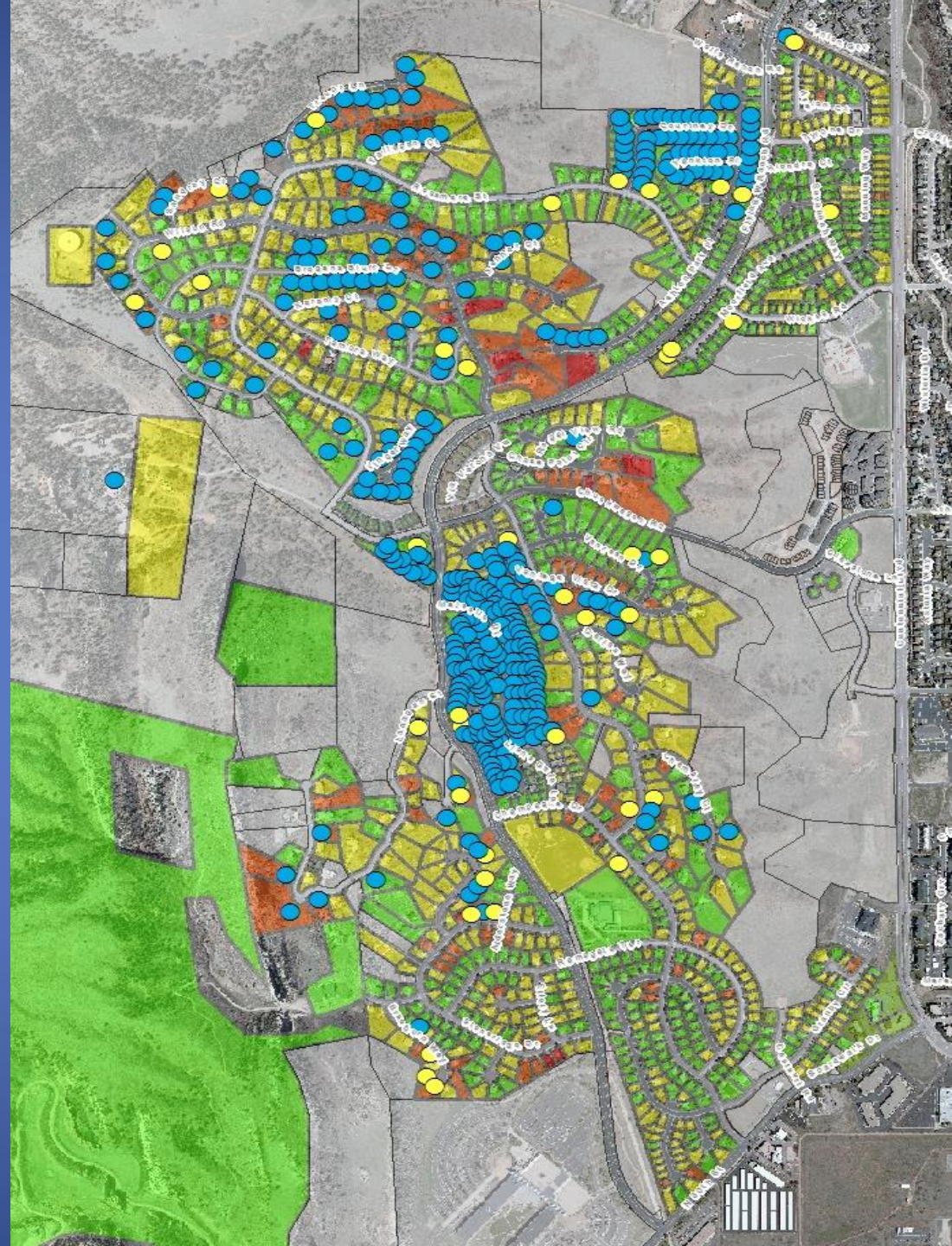






# Wildfire Hazard Risk Rating

- Moderate – High
- Relative risk model







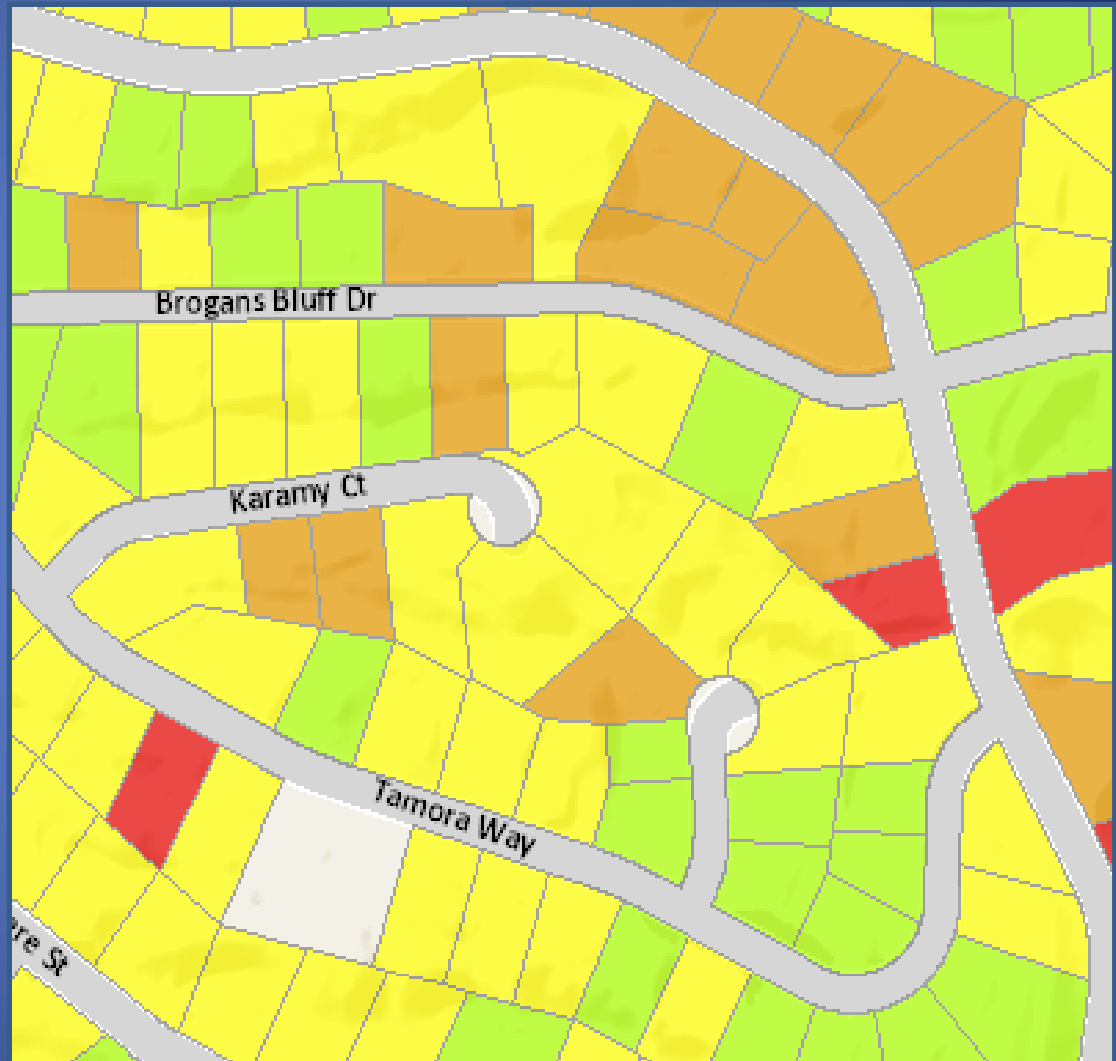




# Waldo Canyon Fire

## Risk assessments

- Extreme : 0
- Very High : 39
- High : 113
- Moderate : 191
- Low : 0
- UNK : 2





# Loss / Damage

- 345 Lost, 47 Damaged
- Shake shingle: 76
- 82% save rate
- 46 participants
- 14 destroyed  
(less than 1/3)





# Cedar Heights





# Cedar Heights





# Darien Way





# Darien Way





# Darien Way





# Shake Shingle Roofs

- Class A
  - Ordinance 2003
  - Pre-Waldo :  
55,209
  - Since Waldo:  
13,706
  - Currently 68,915
  - 2,200+ residences



# Post-Fire

## Reconstruction

- Insurance
- Collaboration
- Permits 110 / 2

## Code updates

- Vegetation
- Construction
- Costs 0-2%
- City Council Vote 5:2





# Evacuation

- Survey respondents 52/125 (41%)
- Mitigation 38/52 (74%)
- Notifications
- Timing
- Pets
- Communications



# Contact Information / Questions

[www.csfd.springsgov.com](http://www.csfd.springsgov.com)

(CSFD Wildfire Risk Assessment map)

**Christina Randall, Program Administrator**  
**(719) 385-7368**  
[crandall@springsgov.com](mailto:crandall@springsgov.com)

**Amy Sylvester, Program Coordinator**  
**(719) 385-7342**  
[asylvester@springsgov.com](mailto:asylvester@springsgov.com)

Colorado Springs Fire Department  
375 Printers Parkway  
Colorado Springs, CO 80910

