



# The Philatelic Prospector

A publication of the Sacramento Philatelic Society, est. 1914  
PO Box 13284, Sacramento, CA 95813  
Meeting at 3205 Hurley Way, Sacramento, CA 95864

May 2014

## 2014 Easter Seals Benefit Show

I would like to send a very special "Thank You" to all of those who participated in the Easter Seal Benefit Show this year. It takes all of the volunteers to make it successful and this year was a Great Show. Total attendance was 335 with the 203 attendees Saturday the highest since 2008, the 132 on Sunday was the highest since 2010. The money raised by the Easter Seals Benefit Show was also higher with \$5,051.00 being donated this year. An additional \$2,375.00 was raised and donated to Easter Seals for 2013/14 from the 2 cent box sales during weekly club meetings.

I am looking forward to doing as well next year. Remember you are the ones that make the show a success.

Thank you again.

Katherine Pavalasky, Chair

## Sacramento Philatelic Society 100th Anniversary Celebration

Join us on Saturday September 13, 2014 at Noon for our 100th Celebration. We are planning a luncheon with speakers, exhibits and more at the Dante Club, 2330 Fair Oaks Blvd., Sacramento. The luncheon is free to all but you must have a ticket which you can obtain at any club meeting from Sherry Bradley or Joanne Berkowitz or by contacting Sherry (by mail: 2613 Los Amigos Drive, Rancho Cordova, CA 95670 or email at [sbcamper@aol.com](mailto:sbcamper@aol.com)). Since the tickets are numbered, we will use those numbers to give the restaurant a final count. If, for any reason, you take a ticket and are unable to come, please let Sherry or Joanne know as we don't want to pay for uneaten meals. The cut-off date for acquiring a ticket is August 27th.

## Nominations for Club Officers and BOD

### Annual Officers:

President - Chet Grant  
VicePresident - (vote for 1)  
Mike Parker  
Fred Rickert  
Secretary - Stephen Drew  
Treasurer - John Pavalasky

**Two Board of Directors vacancies for three year terms through 5/2017:** (vote for 2)

Bill Beck  
Paul deBechevet  
Katie Pavalasky

The election is scheduled for May 28, 2014. Please plan on attending this last meeting of May to enter your vote for our club officers and Board of Directors members.

## SPS Circuit Sale

### Hurry! Hurry! Hurry!

All 20¢ and 25¢ net price cards in the Circuit will be on sale at 15¢ for the month of June. This will include cards in all wood boxes, the red boxes in the cabinet as well as red boxes on the front table.

## The Charles Poetzl SPS Scholarship

The Charles Poetzl SPS Scholarship is now taking applications for the 2015 year.

To be eligible for the \$1000 scholarship applicants must:

- Be a stamp collector with an avid interest in stamps and philately.
- Be a member of the SPS in good standing or a natural or legally adopted child of an SPS member in good standing.
- Be between the ages of 17 and 25 years of age at the time of the nomination.
- Must be accepted for enrollment or enrolled at a 2 or 4 year secondary educational institution or school.

If interested, you can find additional requirements, criteria or application on the SPS website at [www.sacramentophilatelicociety.org](http://www.sacramentophilatelicociety.org), or from a SPS Officer or Board member.

Deadline for receiving applications is January 8, 2015.

Winner will be notified by letter, phone or email and announced at the April 1, 2015 regular meeting.

## May 7th Silent Bid Sale

The May silent bid sale was a success with plenty of participation by everyone. Forty two buyers purchased \$881 worth of items from 16 sellers. There were 107 lots of which 66 were sold and 41 remained unsold.

Thanks to everyone that participated, to John Vester for coordinating this sale and to Debbie Jean for doing the usual detailed computer work in the background!

You'll want to start getting your extra stamps together soon for the **August 6th** Silent Bid Sale. Contact John Vester for lotting cards. Remember, price them right and they'll sell!

## Member Buy/Sell/Trade Night - July 23rd

The next Member's Buy/Sell/Trade night will be held on July 23rd. All members including dealers are welcome to bring stuff but you will be limited to 1/2 of a table to display your items for sale or trade.

There will be no 2¢ boxes or club circuit that night. All the buying, selling and trading will be between members - bring any philatelic material in that you think others will be interested in.

## "Coleophilately"... or Beetles on Stamps!

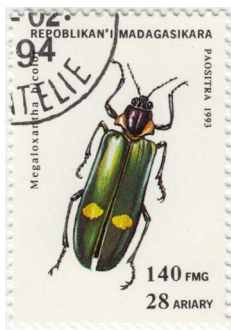
It's no wonder there are lots of stamps with insects as their subject. There are well over 1 million different species of insects - and they occur worldwide in pretty much any environment you can imagine.

By far the most common type of insect are beetles. Forty percent of all insect species are beetles - estimated at between 600,000 and 800,000 species.

Beetles develop through what is called a "complete" lifecycle meaning that they pass through 4 stages of development: egg, larvae, pupa and adult. Most everyone would recognize the egg and adult stages of beetles. The larva is worm-like but with legs and a distinct head while the pupa is a resting stage normally found in the ground or under leaves that looks somewhat like an adult beetle wrapped in tan plastic.

Some of these beetles are very large, some are very colorful, and some are just plain interesting. It's no wonder they're shown on stamps! In the next couple pages I'll show you some of the more interesting "beetle stamps" I have.

First up are the "**Metallic Wood-boring Beetles**" as they are commonly known. Entomologists (scientists who study insects) classify these together in the family **Buprestidae**.



Megaloxantha bicolor - Individuals can reach 3 inches in length. They are found from India through Thailand and Indonesia into Australia.



Sternotomis gama and Sternotomis virescens - These species are from central Africa... which explains why they are pictured on stamps from the Central African Republic.

Next are the "**Ground Beetles**" - members of the family **Carabidae**.



Calosoma sycophanta - This beetle which is known by the common name "The Caterpillar Killer" was imported into New England in 1905 to control the gypsy moth. It is a voracious caterpillar eater while a larva as well as an adult.



Procerus gigas - At up to 2.8 inches long this is the largest European ground beetle. These beetles feed mainly on snails - the larvae take 3 or more years to mature. This stamp brings up another interesting facet of collecting insects (or any

plant or animal) on stamps. Scientists are constantly researching the relationships and refining the classification of insects. In this case the stamp refers to the genus name "Procerus". This has species has been reclassified under the genus "Carabus" - which is the genus for which this entire family of beetles is named (it is therefore the "type" genus for the family).

The "**Long-horned Beetles**" are named for their extraordinarily long antennae and are placed in the family **Cerambycidae**.



Rosalia alpina - This long-horned beetle's coloration makes it almost invisible against the bark of its preferred host plant the European Beech.



Analeptes trifasciata - This beetle is classified in the sub-family Lamiinae within the Cerambycidae. These "Flat faced Longhorn Beetles" are so named because their head point downward rather than forward like other members of the family. This gives them a flat appearance from the front.



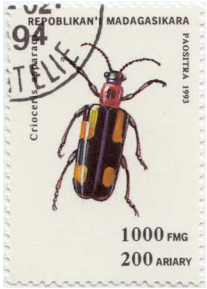
Euporus strangulata - while the genus Euporus does belong to the family Cerambycidae, the only reference I could find to the species was the stamp shown on the left. There was nothing in scientific literature that I could find that mentioned the species 'stragulata' - possibly this beetle exists only on a stamp! Or it's actually a misnamed Euporus brevicornis shown to the right which I found in a webpage on the beetles of Mauritius. This is another facet of collecting insects on stamps - some of them simply don't exist!



Here is another longhorn beetle that looks very similar to a brownish black one found in the mountains of northern California. I'm not sure how large the beetle from Hungary gets, but the one here in California can get over 2 inches

long not counting the antennae!

The "Shining Leaf Beetles" or family **Chrysomelidae** include many species that are pests of food crops in spite of their often striking coloration.



*Crioceris asparagi* - the Common Asparagus Beetle is an important pest of asparagus in both Europe and north America - asparagus is its only food plant

"Scarab Beetles" are actually known commonly by a shortened version of their scientific family name - **Scarabaeidae**. This beetle family include the scarab beetles that were an important part of Egyptian society especially as carved pendants.



*Dynastes tityus* - Known commonly as a "Rhinoceros Beetle" this scarab beetle lives in the Eastern US. It may be 2.4 inches long including the horn. It is among the longest and heaviest beetles in the United States. The horns are used in battles between rival males. Despite their appearance they are harmless to humans



*Garreta nitens* - These scarab beetles are commonly referred to as "Dung Beetles" because they roll up balls of animal dung on which to lay their eggs. This species is found from South Africa to Ethiopia and west to Cote

d'Ivoire while other dung beetles are known worldwide.



*Osmoderma eremita* - the "Hermit Beetle" of Europe. Its larvae develop in hollow trees - due to habitat loss numbers of this species have decreased. Although found throughout Europe, this beetle is protected in most European countries.

"Stag Beetles" - family **Lucanidae** - are found throughout much of the world including North America. They are named for the exceptionally long mandibles of the male beetles. The mandibles of the male are used in combat with other males but are too weak to be harmful. The jaws of the females are much smaller and can inflict a painful bite!



This is a stag beetle found in Great Britain. Very similar beetles that can be nearly 2 inches long are found in the central and eastern United States.

We have a black stag beetle here in California that is not only smaller (just over 0.5 inch) but it has very small mandibles and only a single small horn at the front of its head.



*Lucanus cervus* is found from Europe to the Mideast. Larvae feed on rotting wood and take 4 to 6 years to mature. The adults hatch and survive for about 3 months feeding on nectar and tree sap. Populations of stag beetles are in steep decline and they are now listed as a globally threatened/declining species.

"Carrion or Burying Beetles" - family Silphidae - play an important role in ecosystems by speeding the decomposition of dead animals.



*Necrophorus tomentosus* - The Gold Necked Carrion Beetle of North America. The genus name is misspelled on the stamp - it should be *Nicrophorus*. This burying beetle does not feed on the animal carcasses it finds - rather it digs the soil from under the carcass until it sinks under the soil surface. Then the beetle lays its eggs near the carcass.

Once the larvae hatch the adults feed them until they are fully grown - this takes about a week. At that point the larvae form pupae and the adults move on to find another carcass.

"Checkered Beetles" - the family Cleridae - typically feed on pollen in flowers.



*Trichodes apiarius* is found from Europe to northern Asia and south to northern Africa. These are small hairy beetles that feed mainly on pollen with a few small insects thrown in for variety. The specific name "apiarius" refers to the fact that

the larvae of these beetles are parasites of bees, eating the bee eggs and larvae. The eggs of this beetle are laid in the nests of solitary bees of the genera *Osmia* and *Megachile* as well as in the hives of honey bees (*Apis mellifera*).

## United States Postal Service New Issues

Here are some of the new stamp designs that will be issued by the USPS in 2014. Pictures and data in this article are from [www.usps.com](http://www.usps.com) and are © 2014 USPS.



VINTAGE CIRCUS POSTERS

**Circus: Vintage Posters** - Was issued on May 5, 2014 in Sarasota, FL in a PSA pane of 16 stamps.

Since the early 20th century, the circus has brought together people of all ages and walks of life to watch the amazing acts and let their imaginations soar. Back in the day, companies like the Ringling Bros. and Barnum & Bailey would use posters with eye-catching imagery of stunts, performers, and animals as a vehicle to attract people to come watch the circus. The eight stamps were inspired by original circus posters that are now part of the Tibbals Digital Collection at The Ringling Museum in Sarasota, Florida.



**Harvey Milk** - Will be issued on May 22, 2014 in Washington, D.C. in a PSA pane of 20 stamps.

This stamp honors the gay rights advocate who was the first openly gay person to be elected to public office in California when he won a seat on the San Francisco Board of Supervisors. He was assassinated in 1978, along with SF Mayor George Moscone by a disgruntled former city supervisor. The stamp image is based on a circa 1977 photograph of Milk in front of his camera store in San Francisco.



**Nevada Statehood** - Will be issued on May 29, 2014 in Las Vegas, NV in a PSA pane of 20 stamps.

The Nevada Territory, part of the land transferred to the U.S. at the end of the Mexican-American War, moved rapidly toward statehood after the Civil War began in 1861. The U.S. Postal Service joins the celebration of Nevada's 150th anniversary with a stamp showcasing one of the state's beautiful landscapes, a view of an area in Fire Canyon, part of Valley of Fire, Nevada's oldest state park.



**Hot Rods (America on the Move Series)** - Will be issued on June, 6, 2014 in York, PA in a PSA booklet of 20 stamps.

Cars in general and Hot Rods in particular are a popular part of Americana. The latest USPS issue featuring automobiles is a pair of Hot Rod stamps issued during a major Hot Rod weekend in York, PA. The stamps feature two Ford '32 "Deuce" roadsters.

**Canvasbacks** - This \$15 Federal Migratory Waterfowl Hunting and Conservation Stamp will be issued on June 27, 2014 in Washington D.C.

**Medal of Honor: Korean War** - Will be issued July 2014 in a PSA pane of two designs.

**Civil War: 1864** - Will be issued July 30, 2014 at Petersburg, VA and Mobile, AL in a PSA souvenir sheet of 12 stamps.

**Hudson River Schools (American Treasures Series)** - Will be issued on August 21, 2014 in Hartford, CT at the APS StampShow.

**Janis Joplin (Music Icon Series)** - Will be issued August 2014 in a PSA pane of 16.

**Farmer's Markets** - Will be issued August 2014.

**War of 1812: Ft. McHenry** - Will be issued September 2014 in Baltimore, MD in a PSA sheet of 20 stamps.

**Pioneers of Graphic Design** - Will be issued October 2014 in New York, NY in a PSA pane of 12 stamps.

## Member Presentations

July 16 Joe Ross - Revenue Stamps

## Stamp Shows in Our Area

JUL 11-13 **ASDA Northern California 2014 Postage Stamp Show**  
American Stamp Dealers Assoc.  
The Westin Hotel  
Millbrae, CA  
[www.americanstampdealer.com](http://www.americanstampdealer.com)

JUL 26-27 **Greater Reno Stamp & Cover Show**  
Nevada Stamp Study Society  
Nat'l Bowling Stadium Museum  
Reno, NV  
[www.renostamp.org](http://www.renostamp.org)

AUG 15-17 **Sacramento Gold Rush Paper Show 2014**  
Mark Baker Enterprises.  
La Quinta Inn, Hwy 50 & Sunrise  
Rancho Cordova, CA  
[www.goldrushpaper.com](http://www.goldrushpaper.com)

## APS Online Courses & Other Activities

Year Round **Collecting First Day Covers Part I (5 lessons) and Part II (4 lessons)**  
Instructor: Marj Sente  
[stamps.org/Scout-Merit-Badge](http://stamps.org/Scout-Merit-Badge)

MAY 17-24 **APS Stamp Cruise**  
Stamp Cruise - APS  
Instructor: Fred Gregory and 8 top experts  
[stamps.org/Stamp-Cruise](http://stamps.org/Stamp-Cruise)

JUL 16-17 **Computers and Collecting**  
On The Road Corse prior to Minnesota St Exp  
Instructor: Barb Boal  
[stamps.org/On-The-Road-Courses](http://stamps.org/On-The-Road-Courses)

JUL 21-25 **Volunteer Work Week**  
Hosted at APS Center in Bellefonte, PA  
[stamps.org/Volunteer-Work-Week](http://stamps.org/Volunteer-Work-Week)

JUL 23-25 **Exhibiting 101: Writing a Solid Title Page and Synopsis**  
APS Collecting Connections - course modules  
Instructor: Tony Wawrukiewicz  
[stamps.org/modules](http://stamps.org/modules)

AUG 19-20 **Detecting Damaged, Altered and Repaired Stamps**  
On The Road Corse prior to APS StampShow  
Instructor: Irv Miller  
[stamps.org/On-The-Road-Courses](http://stamps.org/On-The-Road-Courses)

AUG 19-20 **Before the First Issue: U.S. Locals & Carriers**  
On The Road Corse prior to APS StampShow  
Instructor: Larry Lyons  
[stamps.org/On-The-Road-Courses](http://stamps.org/On-The-Road-Courses)

## International Stamp Shows

May-Jun 30-1 **Royal 2014 Royale**  
Nova Scotia Stamp Club  
Halifax, Nova Scotia  
[www.royal2014royale.com](http://www.royal2014royale.com)

AUG 7-12 **PHILAKOREA 2014**  
General World Philatelic Exhibition  
Seoul, South Korea  
[www.philakorea.com](http://www.philakorea.com)

SEP 12-14 **Aerophilately 2014**  
American Air Mail Society  
Bellefonte, PA  
[www.americanairmailssociety.org](http://www.americanairmailssociety.org)

## National Stamp Shows

MAY 9-11 **PIPEX**  
Northwest Fed. of Stamp Clubs  
Portland, OR  
[www.pipexshow.org](http://www.pipexshow.org)

MAY 16-18 **ROMPEX**  
Rocky Mountain Phil. Exhibition, Inc.  
Denver, CO  
[www.rockymountainstampshow.com](http://www.rockymountainstampshow.com)

MAY 16-18 **ROPEX**  
Rochester Philatelic Assoc.  
Rochester, NY  
[www.rpastamps.org/ropex.html](http://www.rpastamps.org/ropex.html)

May-Jun 30-1 **NOJEX**  
North Jersey Fed. Stamp Clubs, Inc.  
Secaucus, NJ  
[www.nojex.org](http://www.nojex.org)

JUN 6-8 **NAPEX**  
Nat'l Phil. Exhibitions of Washington, DC  
McLean, VI  
[www.napex.org](http://www.napex.org)

JUN 13-15 **COLOPEX**  
Columbus Philatelic Club  
Columbus, OH  
[www.colopex.com](http://www.colopex.com)

JUN 20-21 **OKPEX**  
Oklahoma City Stamp Club  
Midwest City, OK  
[www.okcsc.org](http://www.okcsc.org)

JUN 27-29 **National Topical Stamp Show**  
American Topical Association  
St. Louis, MO  
[www.americantopicalassn.org](http://www.americantopicalassn.org)

JUL 18-20 **Minnesota Stamp Show**  
Twin City Phil. Soc & Local Clubs  
Minneapolis, MN  
[www.stampsminnesota.com](http://www.stampsminnesota.com)

AUG 15-17 **AMERICOVER**  
American First Day Cover Society  
Somerset, NJ  
[www.afdcs.org/amercover](http://www.afdcs.org/amercover)

AUG 21-24 **APS STAMPSHOW**  
American Philatelic Society  
Hartford, CT  
[www.stamps.org/STAMPSHOW-SS](http://www.stamps.org/STAMPSHOW-SS)

AUG 29-31 **BALPEX**  
Baltimore Philatelic Society  
Hunt Valley, MD  
[www.balpex.org](http://www.balpex.org)

SEP 6-7 **Omaha Stamp Show**  
Omaha Philatelic Society  
Omaha, NE  
[www.balpex.org](http://www.balpex.org)

Only World Series of Philately (WSP) shows are included

For more shows and contact details go to:

<http://stamps.org/Show-Calendar>

## SPS Calendar

**Regular meetings are held every Wednesday evening from 7–9PM at the Easter Seals Center, 3205 Hurley Way.**

May	14	Regular plus <b>BOD meeting (8:45)</b>
	21	Meeting, 2¢ boxes, club circuit.
	28	Meeting, 2¢ boxes, club circuit.
Jun	4	Meeting, 2¢ boxes, club circuit.
	11	Regular plus <b>BOD meeting (8:45)</b>
	18	Meeting, 2¢ boxes, club circuit.
	25	Meeting, 2¢ boxes, club circuit.
Jul	2	Meeting, 2¢ boxes, club circuit.
	9	Regular plus <b>BOD meeting (8:45)</b>
	16	Meeting, 2¢ boxes, club circuit.
	23	<b>Member's Buy/Sell/Trade night</b>
	30	Meeting, 2¢ boxes, club circuit.
Aug	6	<b>Silent Bid Sale, no club circuit.</b>
	13	Regular plus <b>BOD meeting (8:45)</b>
	20	Meeting, 2¢ boxes, club circuit.
	27	Meeting, 2¢ boxes, club circuit.
Sept	3	Meeting, 2¢ boxes, club circuit.
	10	Regular plus <b>BOD meeting (8:45)</b>
	17	Meeting, 2¢ boxes, club circuit.
	24	Meeting, 2¢ boxes, club circuit.

We normally have our club circuit and penny boxes available for your shopping pleasure at each meeting. There are also members who enjoy just talking about their collections or helping you with yours. You might even find a member with a similar interest as you have and you can initiate a stamp swap. Come see us – it's a lot of fun. 'Shoe Boxes' of 2¢ stamps can be taken home to search through during the week.

## New Members

Sacramento Philatelic Society membership for 2014 totals 229. New members and their collecting interest since the last newsletter mention are:

<b>2060</b>	Nimoy Floyd-Fields	Black History Stamps
<b>2061</b>	William D. Best, Jr.	Stamps, Coins
<b>2062</b>	Tom Bodem	US Wash/Frank, Liberty Series, Booklest

## Call for Articles

If you have a collecting interest that you would like to share with the club but feel more comfortable doing so in written form, please send it to Doug Elliott via email at nzstampsinca 'at' gmail.com. You can also get a printed version to me at one of the Wednesday meetings – I can scan and/or retype it as necessary. Or mail a copy to me at PO Box 1547, Oroville CA 95965. Typical articles will run from a half to full page (or two) of text and images.

## Officers & Board of Directors

<b>President</b>	Ernie Teays
<b>Vice President</b>	(open)
<b>Secretary</b>	Stephen Drew
<b>Treasurer</b>	John Pavalasky

### Board of Directors

Joanne Berkowitz	(thru 5/2016) <b>(Chair)</b>
Ken Hilmer	(thru 5/2016)
John Vester	(thru 5/2015)
Duane Morford	(thru 5/2015)
Sherry Bradley	(thru 5/2014)
Chet Grant	(thru 5/2014)

### Committee Chairmen

Easter Seals Show	Katie Pavalasky
SACAPEX 2014	Joanne Berkowitz
Junior Members	Dean Carl
Library	Ken Hilmer
Membership	Debbie Jean Hopkins
Nominating	(open)
Programs	Fred Rickert
Prospector	Doug Elliott
Silent Bid Sale	Chet Grant
Website	Dean Carl

## Prospector Distribution

If you are reading this from our website right now, you are one of those helping us to reduce our costs. It currently costs more than \$1 to produce the hard copies and mail them to each member or family.

If you have an email address we will send a notice when a new edition of the Prospector is ready for viewing.

To see the Prospector at our website:

1. Go to [www.sacramentophilatelicsociety.org](http://www.sacramentophilatelicsociety.org)
2. Look under the Prospector section for **[Find the Prospector newsletter here.](#)**
3. You will be able to read past issues as well as the current issue.

If you need help please ask Dean Carl, Doug Elliott or Al Williams about the specifics of your problem.

## Visit Our Website

**Dean Carl** does a great job with the SPS website at [sacramentophilatelicsociety.org](http://sacramentophilatelicsociety.org). A calendar of events, membership forms, copies of the Prospector back to 2004, and links to philatelic-related websites are all there!

## Current USPS Rates

### **Domestic:**

First-Class Mail Letter (1 oz) - 49¢
First-Class Mail Letter (2 oz) – 70¢
Rigid Envelope Surcharge - 21¢
Postcard - 34¢
Large Envelope (2 oz) - \$1.12
Certified Mail - \$3.30

### **International:**

First-Class Mail Int'l Letter (1 oz)
All Countries - \$1.15
Add'l ounces vary by country group - see usps.com