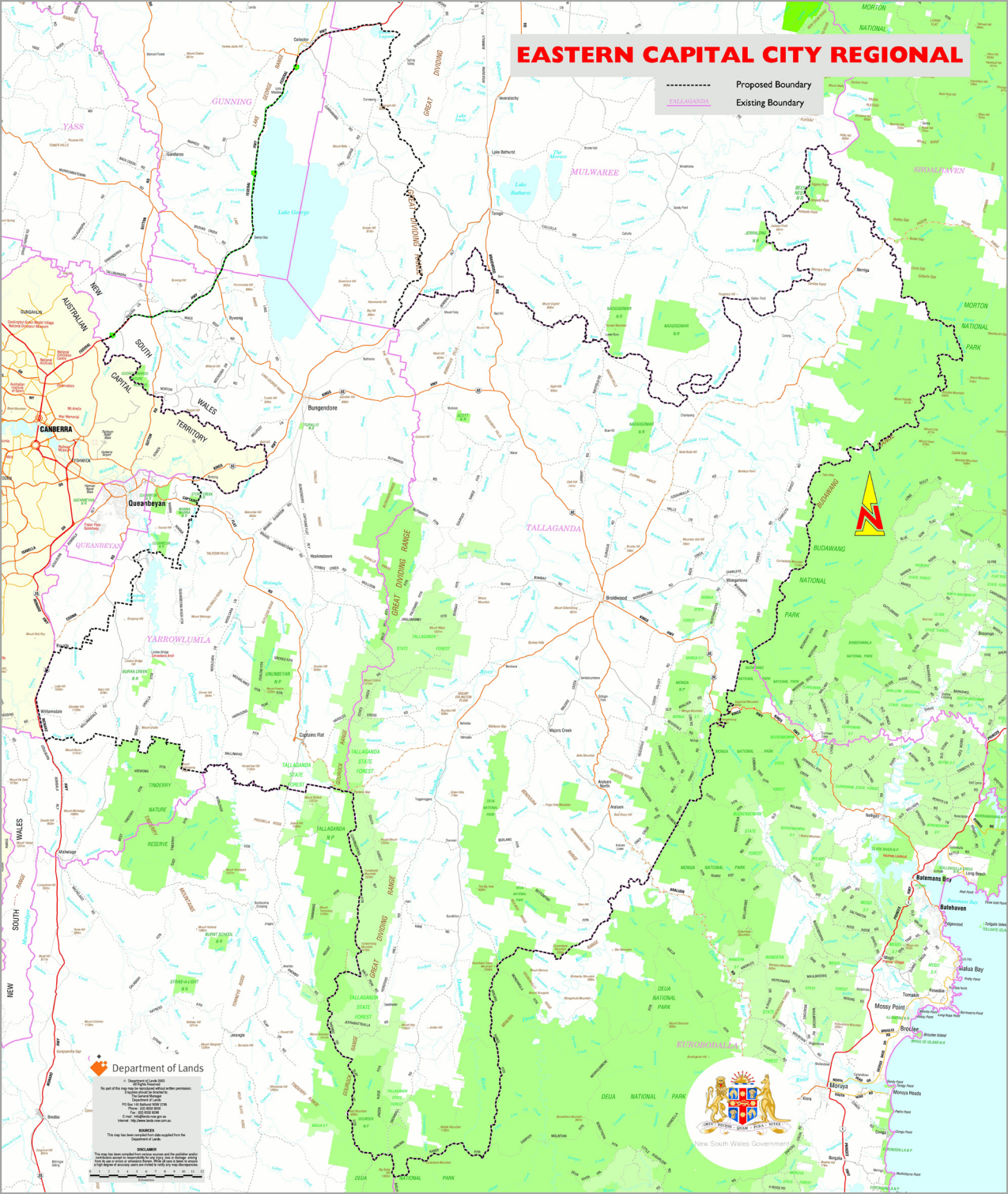


# EASTERN CAPITAL CITY REGIONAL

----- Proposed Boundary  
TALLAGANDA Existing Boundary



**Department of Lands**  
Map of the Eastern Capital City Regional  
This map is a general representation of the land and is not intended to be used for legal purposes.  
The General Manager  
Department of Lands  
Locked Mail Bag 961  
Sydney NSW 1585  
Phone: (02) 951 5500  
Fax: (02) 951 5501  
Email: [enquiries@land.nsw.gov.au](mailto:enquiries@land.nsw.gov.au)  
Internet: <http://www.land.nsw.gov.au>

**DISCLAIMER**  
This map has been prepared from data supplied from the Department of Lands.  
The map has been prepared from data supplied from the Department of Lands.  
The map has been prepared from data supplied from the Department of Lands.



New South Wales Government