



Coupler Information





William Cook Rail Coupler Information

Issue 2: 4 April 2017

Copyright © 2014-2017 William Cook Rail Ltd. All rights reserved.

This document is protected by copyright and design right owned by William Cook Rail Limited. All rights conferred by the law of copyright conventions are reserved to the copyright owner.

No part of this document may be used, disclosed, transmitted, copied, lent, sold, stored in any retrieval system of any nature or otherwise reproduced or circulated (in any form or by any means including electronically and whether or not transiently) without the express prior written consent of the copyright owner.

General Contact Information:

William Cook Rail Ltd
Cross Green
Leeds
LS9 0DX
England

Tel. +44 (0) 113 249 6363

Web: www.william-cook.co.uk/rail.html

Email: rail@cook-rail.co.uk

For information about our company, please visit our website.



SERVICES

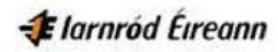
- CNC Machining – all types
- Pressing and Straightening
- Fabrication by qualified welders using the latest MIG and TIG welding equipment
- Magnetic Particle, Ultrasonic and Radiographic Inspection
- Stress-Relieving, Air and Inert Atmosphere Normalising, Tempering and Quenching
- Hot Wash De-Greasing, Shot and Sand Blasting
- Dipping, Hand Painting, Spray Painting, Heated Drying
- Collision Damage Repairs, Fault Finding and Clash Testing



ACCREDITATIONS AND APPROVALS

- ISO 9001:2008 Quality Management System Standard
Certificate number: 10008591
- ISO 14001:2004 Environmental Management System Standard
Certificate number: LRQ 4003564/B
- BS OHSAS 18001:2007 Occupational Health & Safety Management System
Certificate number: LRQ 4005915/B
- EN 15085-2, Certification Level CL1
Certificate number: TÜVNORD/15085/CL1/167/0A4/13
- Deutsche Bahn
Certificate number: 3342017
- IRIS

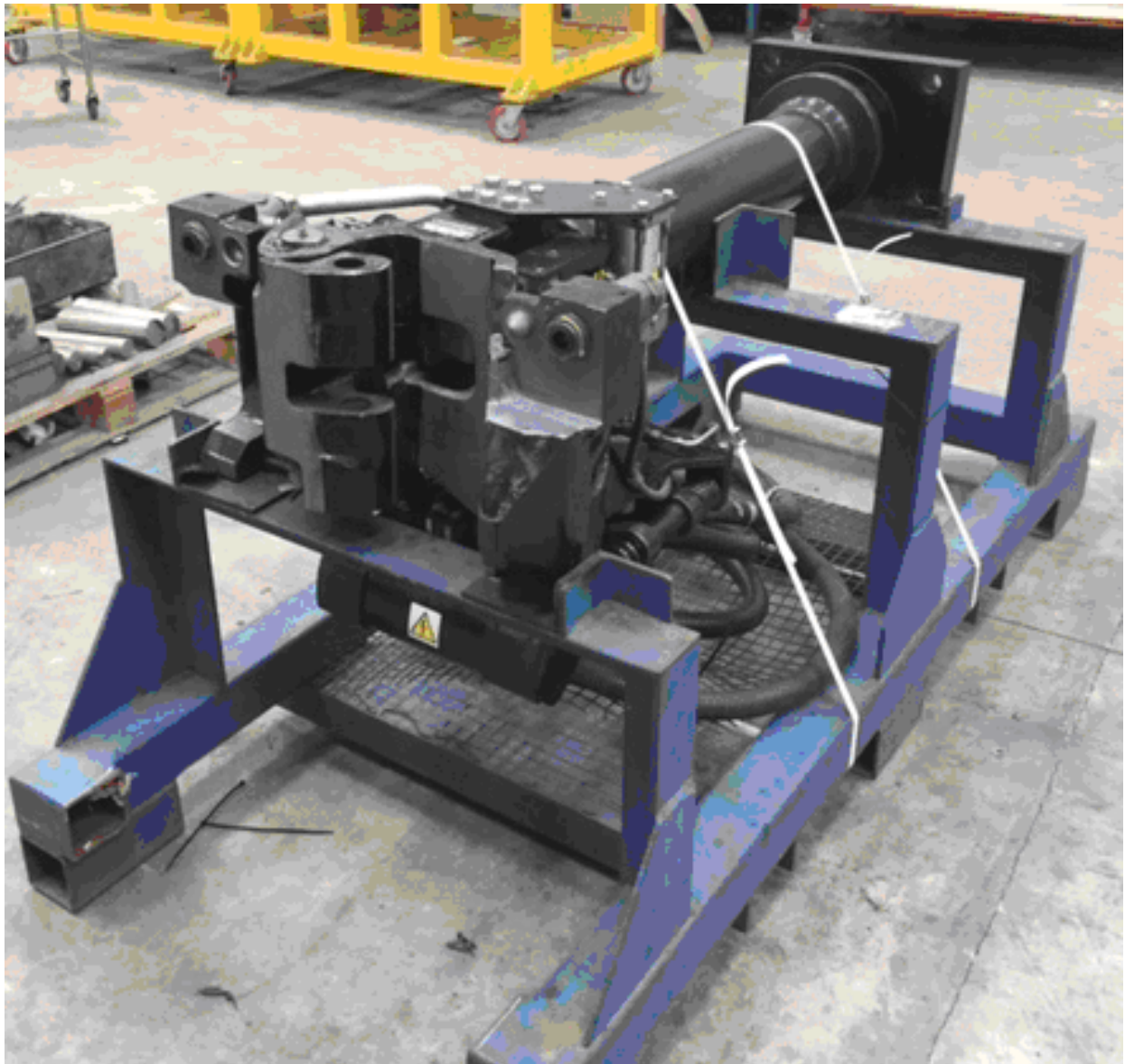
CUSTOMERS



COUPLER REFERENCES

1. Manufacture and supply of 148 Tightlock couplers for South West Trains and Scotrail Juniper units including design and supply of a new pneumatic uncoupling system.
2. Design, manufacture and supply of 1100 wagon combination couplers for DB Cargo (Formerly EWS).
3. Design, manufacture and supply of 500 and 60 locomotive combination couplers for DB Cargo (Formerly EWS) Class 66 and 67 respectively.
4. Design, manufacture and supply of 440 modified Tightlock couplers for use on Class 357 & 375 units for C2C and Connex.
5. Design, manufacture and supply 280 uncoupling mechanisms for use on Tightlock couplers fitted to Class 365 & 465 units.
6. Refurbishment & modification of 50 Drophead Buckeye couplers for LUL Transplant Ruislip.
7. Supply of 36 new & refurbished drawbars c/w pins for Ulsterbus Translink.
8. Supply of Drophead Buckeye couplers to include new hook design for CAF Spain.
9. Design and supply 50 special Ward couplers for Tube Lines.
10. Refurbishment of buffers for Tube Lines Ltd.
11. Design, manufacture, build and test 32 special swan-neck Tightlock couplers for Australia.
12. Manufacture of 114 HST Alliance couplers with gangway supports.
13. Manufacture of long and short bar semi-permanent bar couplers to replace BSI couplers for Porterbrook.
14. Design and manufacture of 600 Long and 143 Short Bar couplers for Angel Trains.
15. Overhaul of 252 Wedgelock couplers for the Jubilee Line heavy overhaul.
16. Design and manufacture of 600 Long and 143 Short Bar couplers for Angel Trains.
17. Overhaul of 12 1938 stock Wedgelock couplers for Island Trains.
18. Manufacture of new Wedgelock couplers for Central Line.
19. Overhaul of 148 Tightlock couplers and drawgears including electrical and pneumatics for the class 357 fleet.
20. Overhaul of the LUL transplant drop head buckeye couplers, wagon drawgear and buffers.

June 2016

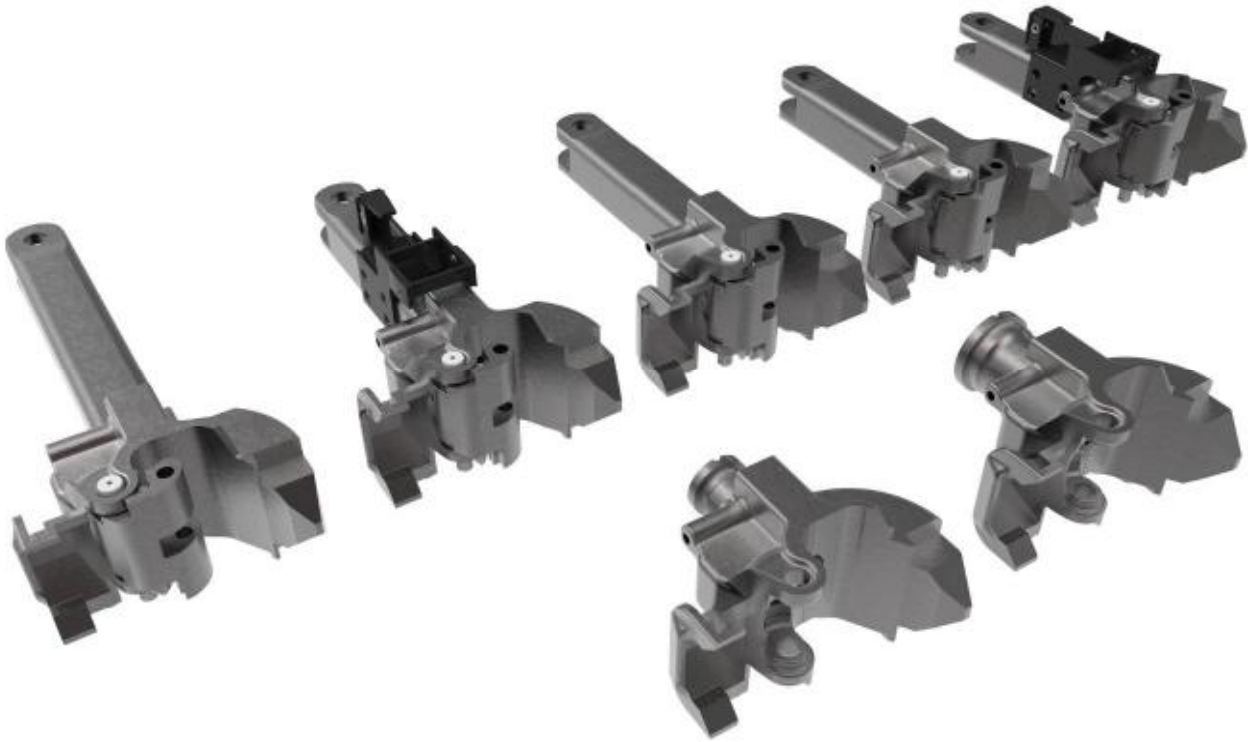
BOMBARDIER CLASS 357 OVERHAUL

These Bombardier Class 357 Couplers were originally built by Sab Wabco using Tighlock Heads supplied by William Cook Rail.

William Cook Rail is currently carrying out a complete overhaul of these couplers:

- Mechanical;
- Electrical;
- Pneumatic.

TIGHTLOCK COUPLERS

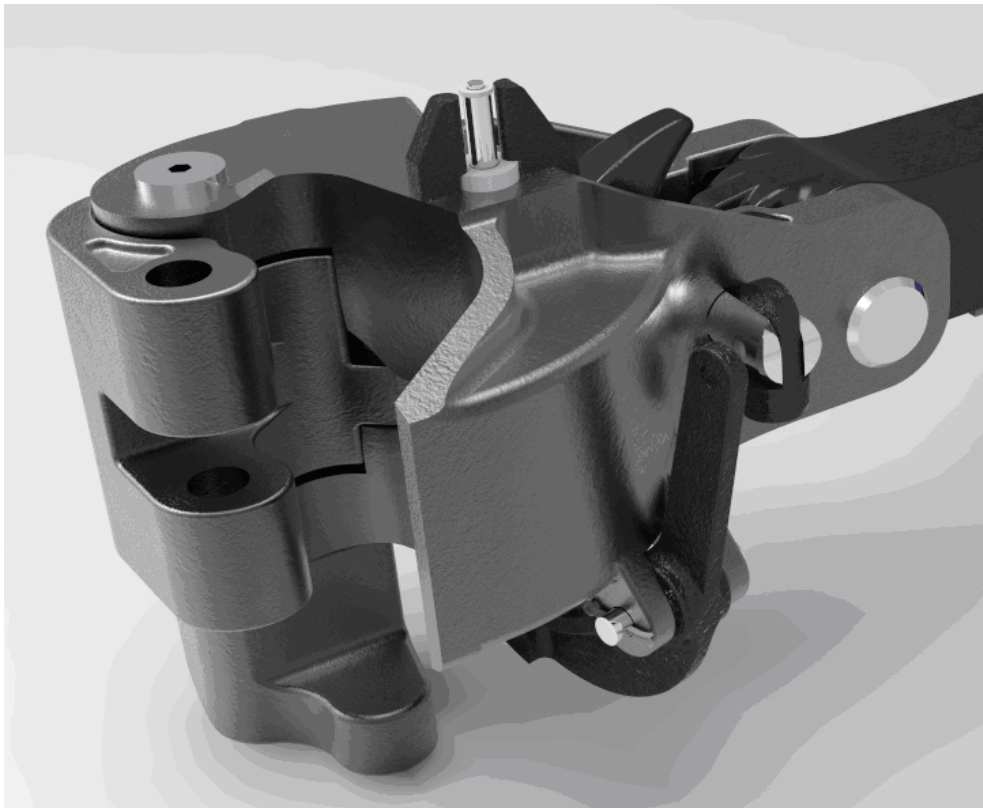


William Cook Rail manufacture these Tightlock couplers for customers such as:

- Dellner;
- Unipart;
- Bombardier;
- Wabtec.

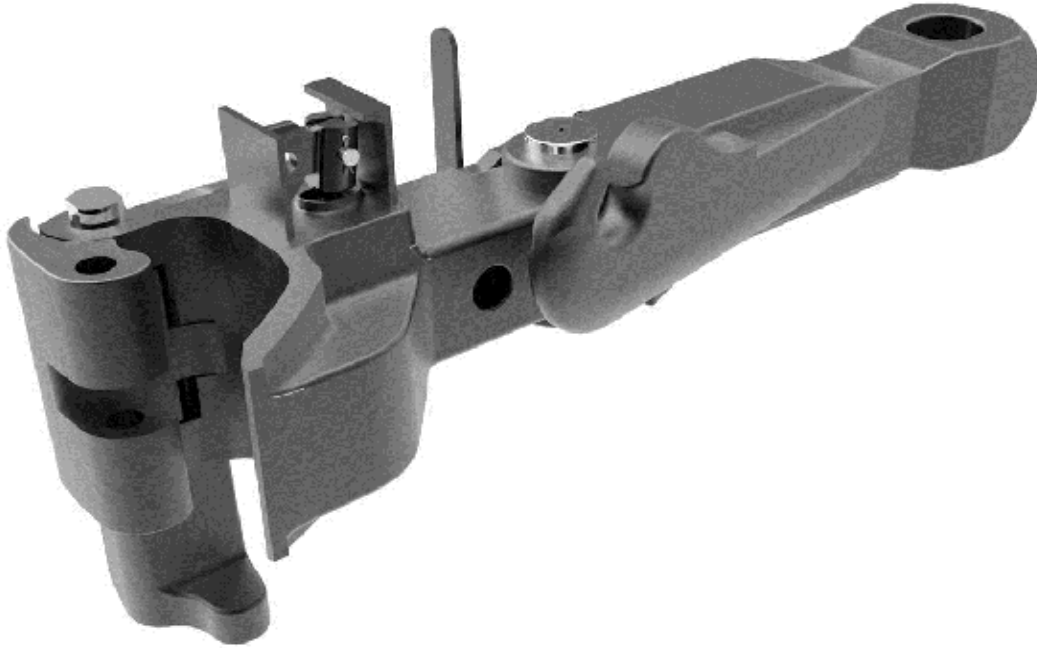
William Cook Rail overhaul Tightlock couplers for companies including:

- Bombardier;
- Govia Thameslink;
- Knorr Bremse;
- Unipart;
- London Midland.

DROP HEAD BUCKEYE COUPLER

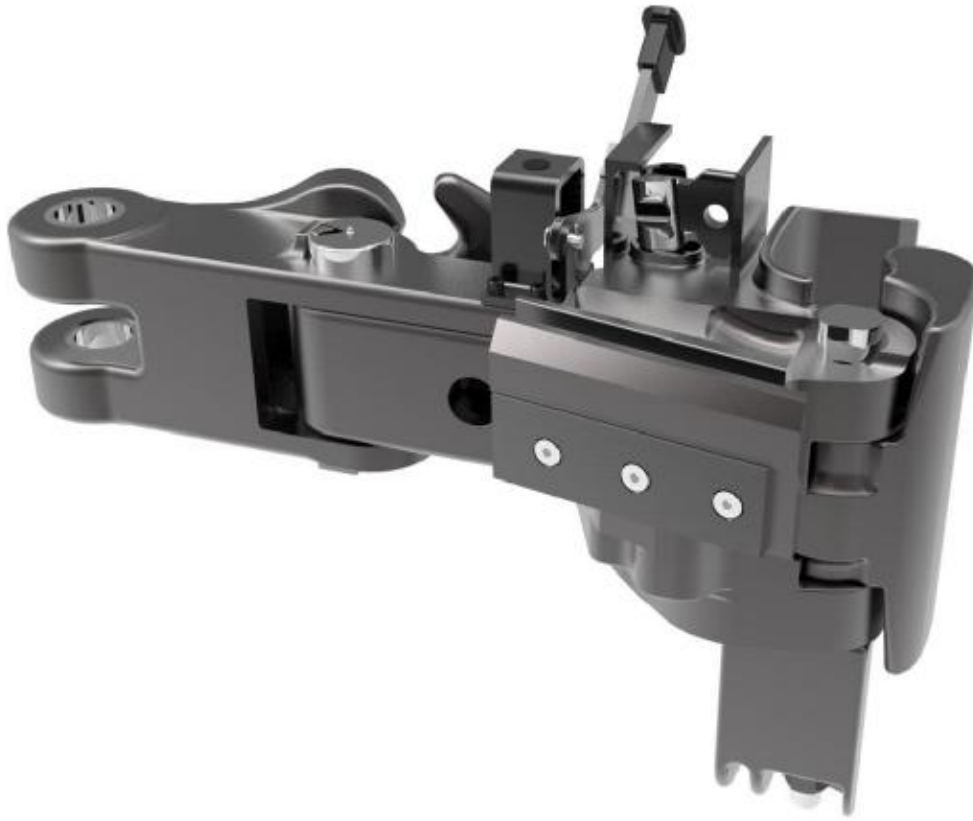
William Cook Rail manufacture and overhaul Drop Head Buckeye (DHB) couplers and associated drawgear for companies such as:

- Kirow;
- Matisa Matériel Industriel SA;
- London Underground;
- Orient Express;
- LNWR.

FREIGHT WAGON COUPLERS

William Cook Rail is the designer and O.E.M of these couplers. WCR manufacture and overhaul them for customers including:

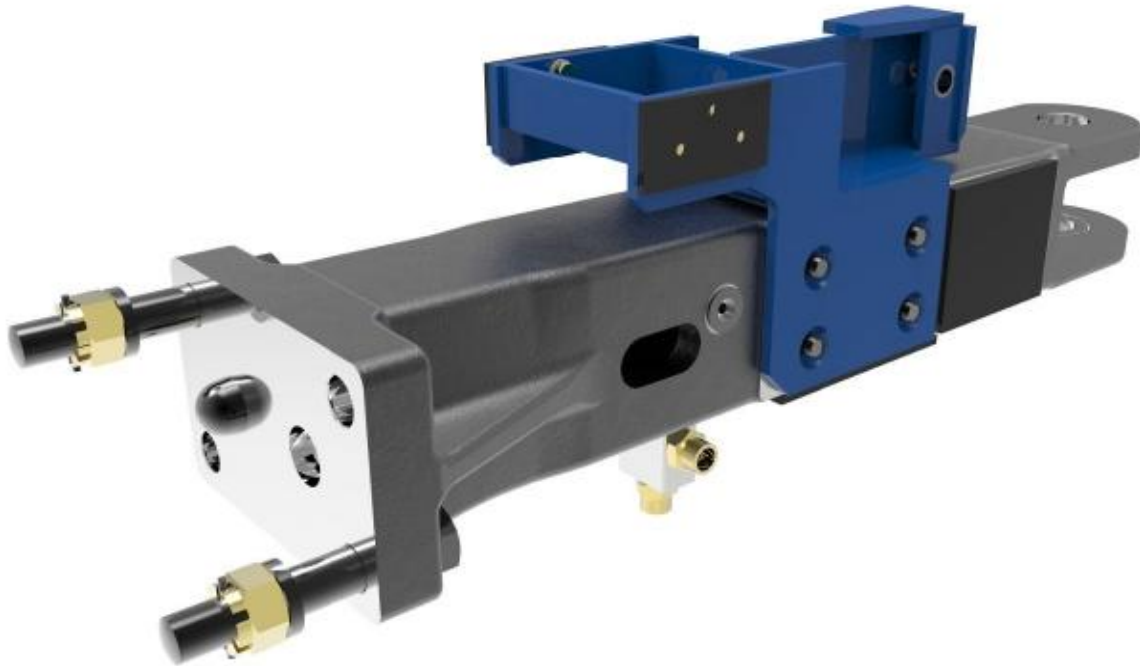
- DB Cargo;
- Wabtec;
- GB Rail Freight.

FREIGHT CLASS 66 LOCOMOTIVE COUPLERS

William Cook Rail is the designer and O.E.M of these couplers. WCR manufacture and overhaul them for customers including:

- DB Cargo;
- Wabtec;
- GB Rail Freight.

INTERMEDIATE BAR COUPLERS



WCR have designed and are currently manufacturing bar couplers for customers such as:

- Porterbrook;
- Angel Trains;
- Unipart;
- Wabtec;
- Various train operating companies.

1936 STOCK WEDGELOCK COUPLER



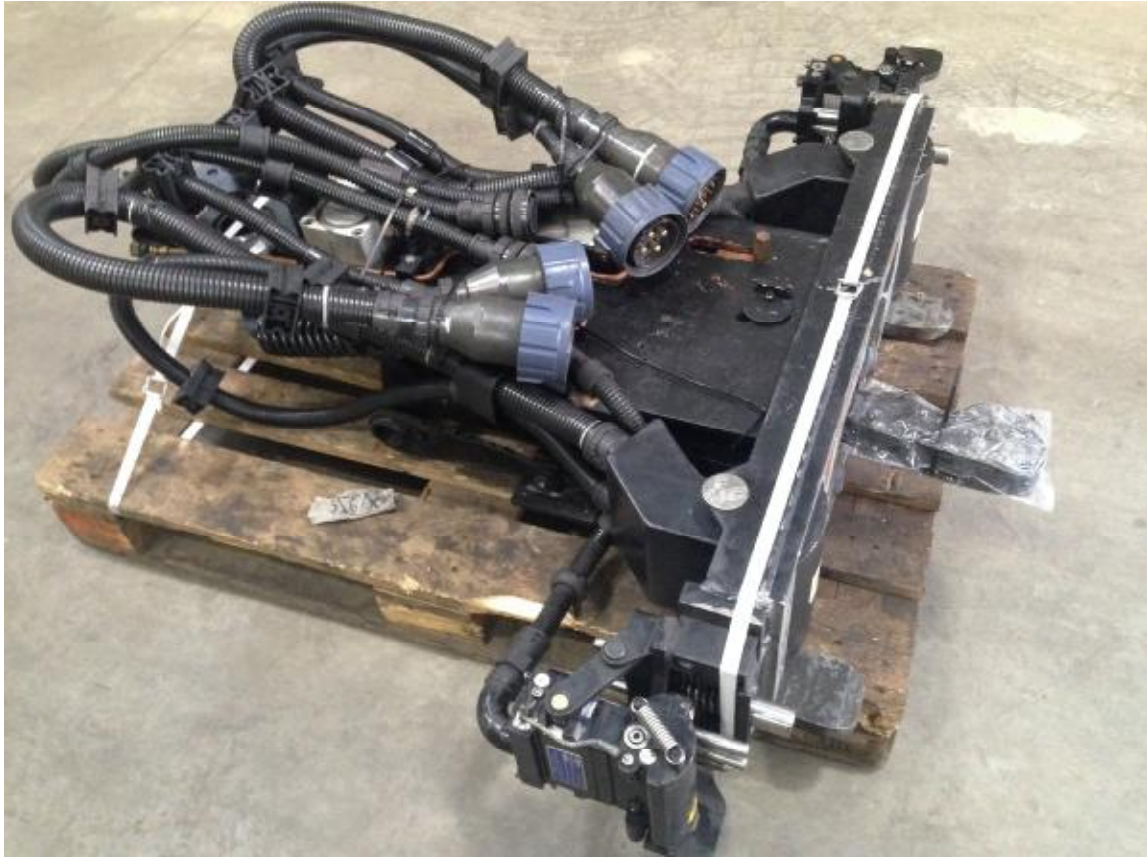
William Cook Rail has overhauled 1936 stock Wedgelock couplers in operation on the Isle of Wight for Island Trains. The photographs show a Wedgelock coupler before (top) and after (bottom) overhaul.

JUBILEE LINE CAB-END WEDGELOCK COUPLER

William Cook Rail has overhauled Cab-End Wedgelock couplers for the Jubilee line.

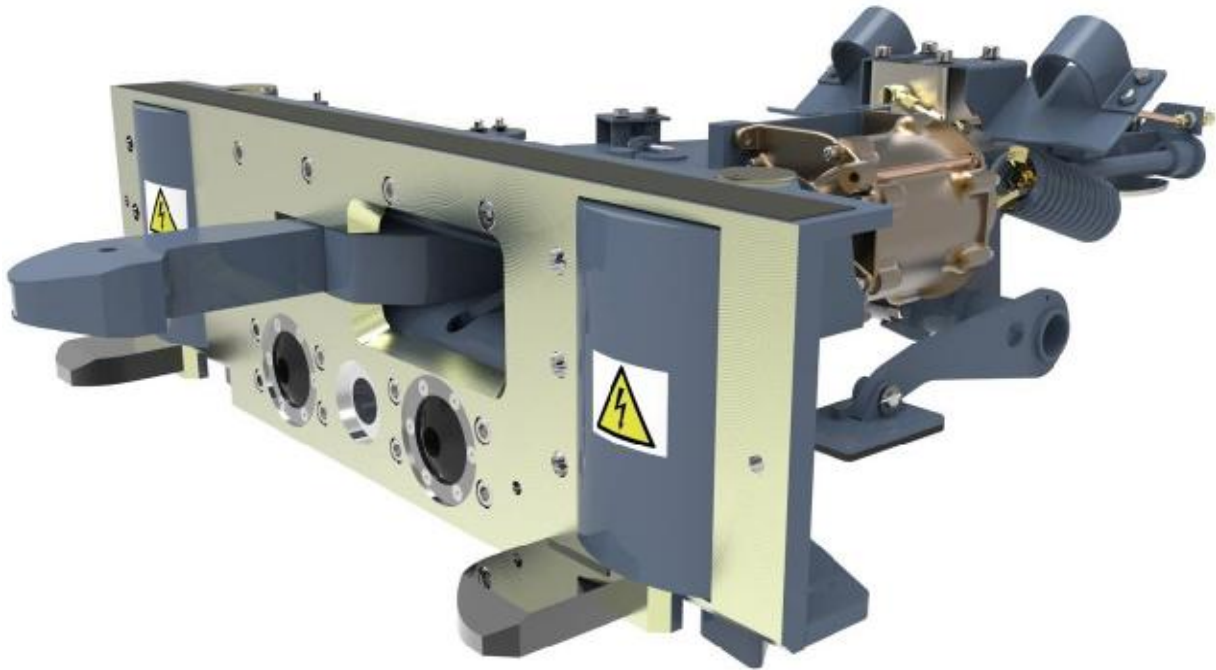


NORTHERN LINE WEDGELOCK COUPLER



William Cook Rail has repaired Intermediate Wedgelock Couplers with contact boxes and TBTC Boxes for the Northern line.

CENTRAL LINE WEDGELOCK COUPLER

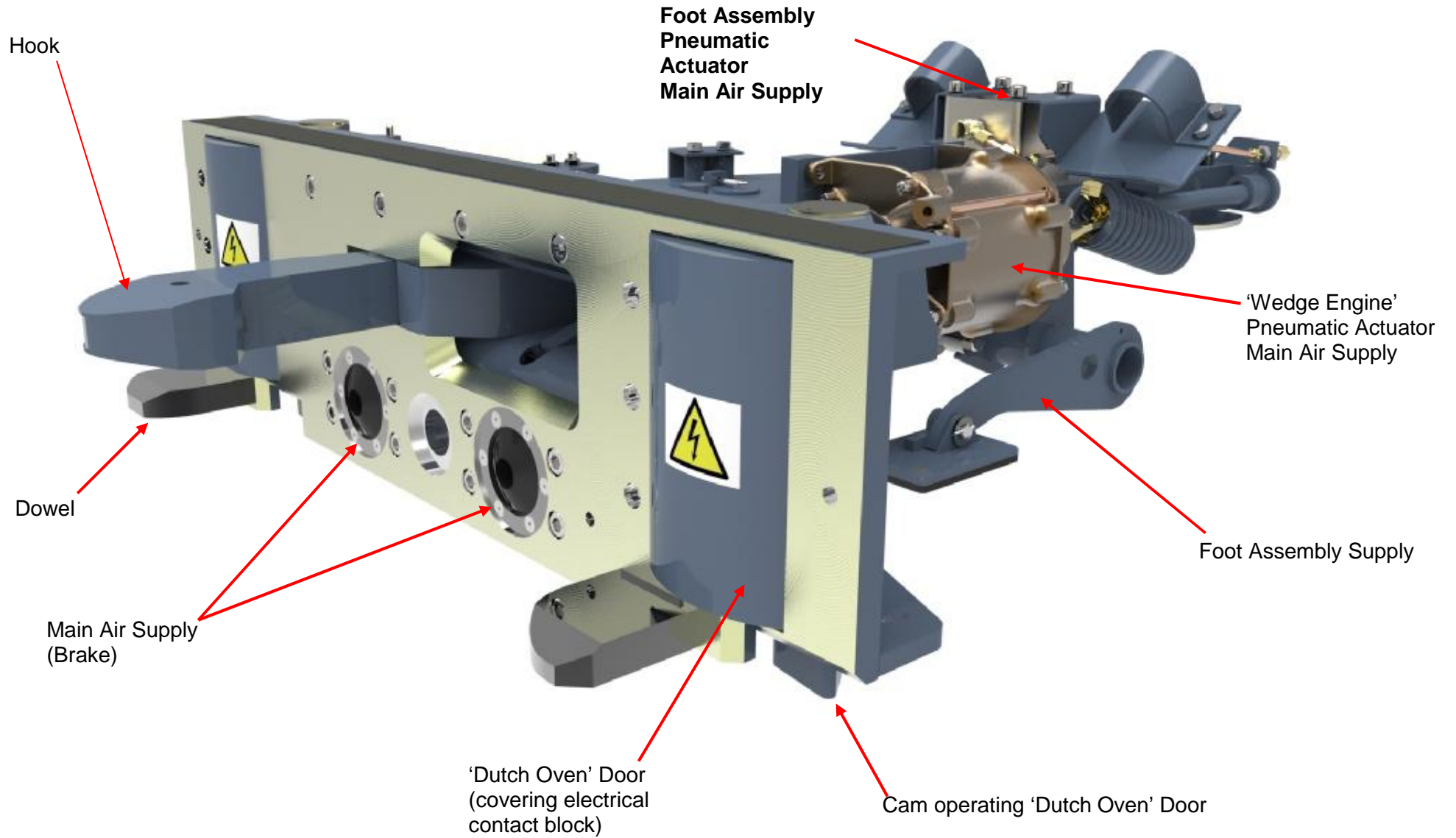


William Cook Rail is the O.E.M of these Wedgelock couplers. William Cook Rail has recently manufactured eight couplers (pictured above) on a 12 week lead time for float to enable the Central Line heavy overhaul to be mobilised.

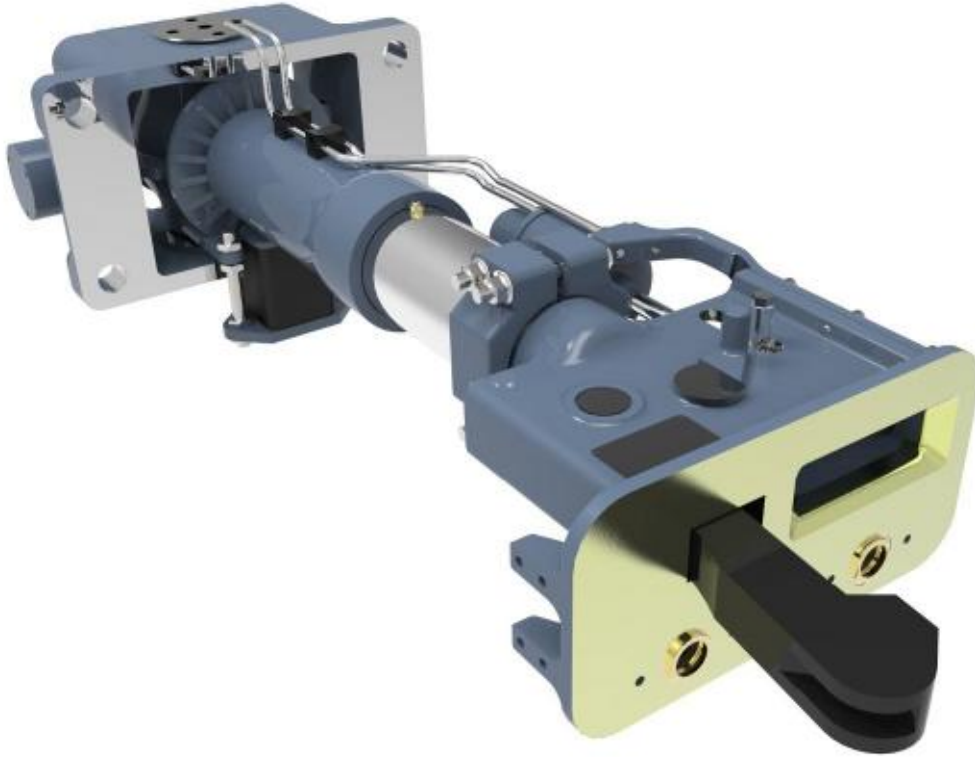
Northern and Jubilee line couplers are of the same type with some subtle differences for conduit routing brackets.



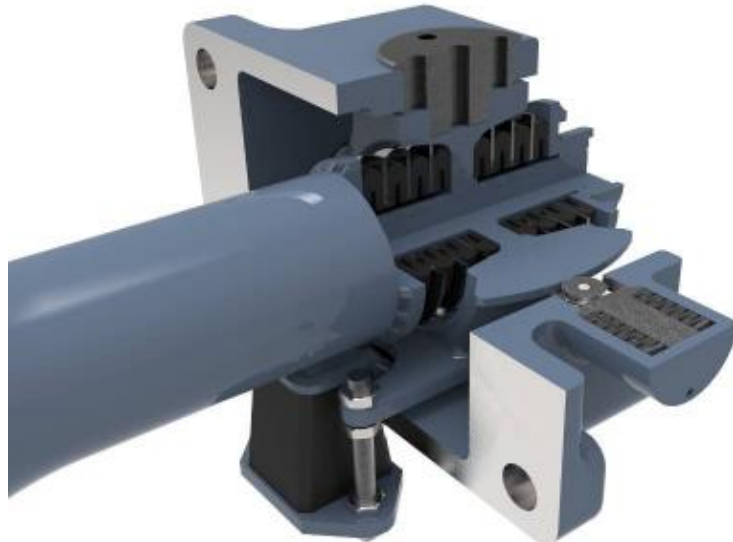
WEDGELOCK COUPLER: MAIN COMPONENTS



NTfL / JNAT COMPACT WEDGELOCK COUPLER & DRAWGEAR



Compact Wedgeloock Coupler

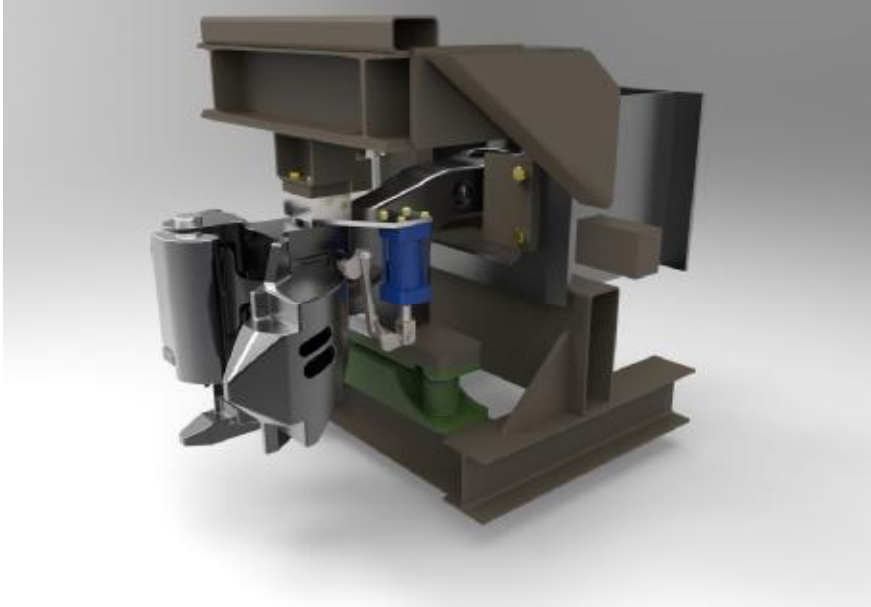


*Drawgear of the Compact Wedgeloock Coupler Drawgear
showing Eastomer Buffer and Pivoting System*

William Cook Rail has designed a Compact Wedgeloock Coupler for use on New Tube for London (NTfL) or Jubilee and Northern Line Additional Trains (JNAT) programmes.



**TIGHTLOCK COUPLERS
LOCOMOTIVE AND EMU PASSENGER**





TORPEDO CAR COUPLERS AND DRAWGEAR



ANCILLARY REPLACEMENT PARTS

**MAINTENANCE AND REFURBISHMENT OF
ANCILLARY ELECTRICAL EQUIPMENT**





CLASH TESTING





FACILITIES





FINANCIAL INFORMATION 2015/2016

- Group Sales: £50 Million
- Group Net Assets: £58 Million
- Employees: 450

