



crochet retro afghan

just ask, Jo-Ann **how to**

more projects available at Joann.com

Afghan measures approximately 45½" x 7½".

#### SUPPLIES & TOOLS:

- TLC® Essentials™ yarn:
  - Lt. Country Rose CA - 3 skeins
  - Aran CB, Black CC - 5 skeins each
- Crochet Hook - 4mm [US G-6]
- Yarn needle

**GAUGE:** Square = 6½" x 6½" measured diagonally from corner to corner. CHECK YOUR GAUGE. Use any size hook to obtain the gauge.

#### DIRECTIONS:

**SQUARE (Make 136):** With CA, ch 4; join with a sl st to form a ring.

**Rnd 1 (Right Side):** Ch 3 (counts as first dc), 2 dc in ring, ch 2, [3 dc in ring, ch 2] 3 times; join with sl st in top of ch-3.

**Rnd 2:** Ch 2; hdc2tog over same st as joining and next dc, ch 1, hdc2tog over last st worked and next dc, \* ch 1, (hdc2tog, ch 3, hdc2tog) all in corner sp, ch 1 \*\*, hdc2tog over next 2 dc, ch 1, hdc2tog over last st worked and next dc; rep from \* around, end at \*\*; join in top of first hdc2tog – 4 hdc2tog on each side. Fasten off.

**Rnd 3:** With right side facing, join CB in any corner ch-3 sp; ch 2, hdc2tog in same sp, ch 1, \* [hdc2tog over last sp worked and next sp, ch 1] 4 times, (hdc2tog, ch 2, hdc2tog) all in corner ch-3 sp, ch 1, [hdc2tog over last sp worked and next sp, ch 1] 4 times, hdc2tog in corner ch-sp, ch 1 \*; DROP BUT DO NOT CUT CB, yo with CC and draw through the lp on hook; with CC, hdc2tog in same ch-3 sp, ch 1; rep from \* to \* once; ch 1 more; join in top of first hdc2tog; TURN – 6 hdc2tog on each side.

Rnd 4 (Wrong Side): Sl st into first corner ch-2 sp, ch 2, hdc2tog in same sp, ch 1, \* [hdc2tog over last sp worked and next sp, ch 1] 6 times, (hdc2tog, ch 2, hdc2tog, ch 1) all in corner ch-2 sp, [hdc2tog over last sp worked and next sp, ch 1] 6 times, hdc2tog in corner sp, ch 1 \*; DROP BUT DO NOT CUT CC, yo with CB and draw through the lp on hook; with CB, hdc2tog in same sp, ch 1; rep from \* to \* once; ch 1 more; join as before; TURN – 8 hdc2tog on each side.

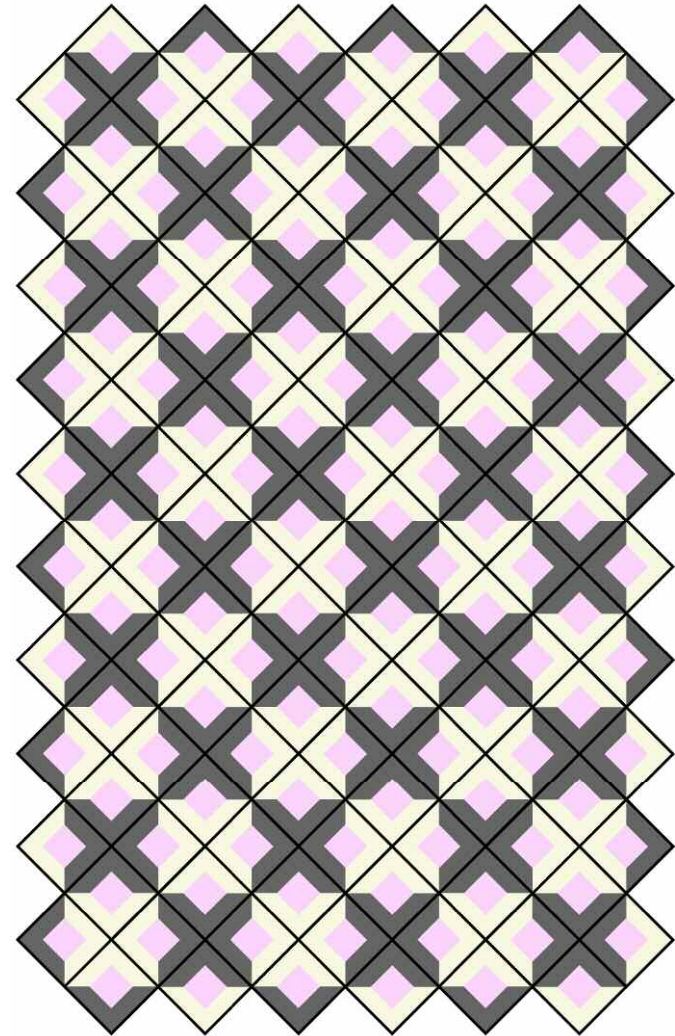
Rnd 5 (Right Side): Sl st into first corner ch-2 sp, ch 2, hdc2tog in same sp, ch 1, \* [hdc2tog over last sp worked and next sp, ch 1] 8 times, (hdc2tog, ch 2, hdc2tog, ch 1) all in corner ch-2 sp, [hdc2tog over last sp worked and next sp, ch 1] 8 times, hdc2tog in corner sp, ch 1 \*; DROP BUT DO NOT CUT CB, yo with CC and draw through lp on hook; with CC, hdc2tog in same sp, ch 1; rep from \* to \* once; ch 1 more; join – 10 hdc2tog on each side. Fasten off. Weave in ends.

FINISHING: Following the diagram, sew squares together.

**ABBREVIATIONS:** CA, CB, CC = colors A, B, C; ch = chain; dc = double crochet; hdc = half double crochet; lp = loop; sl = slip; sp(s) = space(s); st = stitch; tog = together; yo = yarn over; \* or \*\* = repeat whatever follows the \* or \*\* as indicated; [] = work directions in brackets the number of times specified.

**SPECIAL ABBREVIATION:** Hdc2tog = [yo and draw up a lp in st or sp indicated] twice, yo and draw through all 5 lps on hook.

Note: Hdc2tog may be worked over 2 sts, 2 sps, or all in one sp; follow instructions.



Skill Level 3: Crochet experience needed

Due to seasonal nature of project, supplies are available for a limited time only. Please read all instructions prior to beginning; read and follow all manufacturers' instructions for all tools and materials used. Provide adult supervision if children participate in this and all craft projects. Because Jo-Ann Stores, Inc. has no control over the use of materials and tools, nor surroundings, during construction of projects, Jo-Ann Stores, Inc. disclaims any liability for injury, damage or other untoward results. Content of this project sheet is presented in good faith, but no warranty is given, nor results guaranteed. ©2007 Jo-Ann Stores, Inc. All rights reserved.

**JO-ANN**  
fabric and craft stores™

P258-129