

# WE'RE ENGINEERING A BETTER TOMORROW

Lockheed Martin (NYSE: LMT) solves the world's toughest technology challenges. More than 70 nations rely on Lockheed Martin employees, products and technologies to help them protect and connect their citizens and advance scientific discovery. In a time of growing unpredictability and evolving threats, innovation and performance are at the center of everything we do.

ALL DATA FROM 2016

## PEOPLE



**97,000** total employees



**7,000** international employees



**49,000** engineers, scientists and information technology professionals

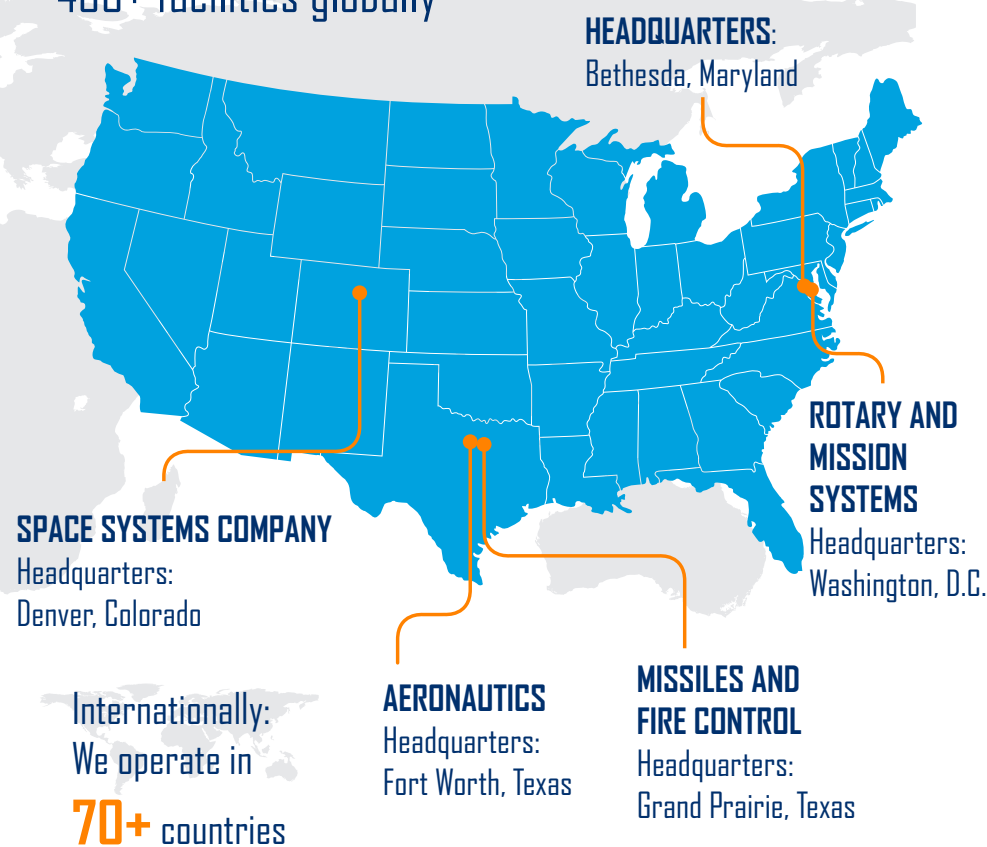


**ONE IN FIVE**  
EMPLOYEES  
IS A VETERAN



## FOOTPRINT

400+ facilities globally



## INDUSTRY LEADING PORTFOLIO

### AERONAUTICS



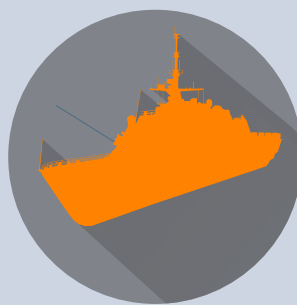
Aeronautics designs, engineers and creates the world's most advanced aircraft, including the world's only fifth generation multi-role stealth fighter – the F-35. Aeronautics is also home to Skunk Works® – one of the nation's preeminent rapid solutions providers.

### MISSILES AND FIRE CONTROL



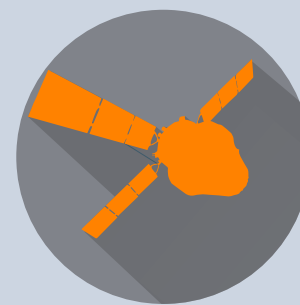
Missiles and Fire Control develops and produces electro-optic and smart munitions systems, and is a pioneer in the field of high-performance missile, missile defense, ground vehicle and rocket technology. It is home to Lockheed Martin Energy, which develops and implements bio-, wind- and tidal-energy systems.

### ROTARY AND MISSION SYSTEMS



Rotary and Mission Systems designs, manufactures, services and supports military and civil helicopters, naval and radar systems, and provides world-class systems integration, training and logistics. It is home to Lockheed Martin's unmanned systems, cyber security, C4ISR and electronic warfare capabilities.

### SPACE SYSTEMS COMPANY

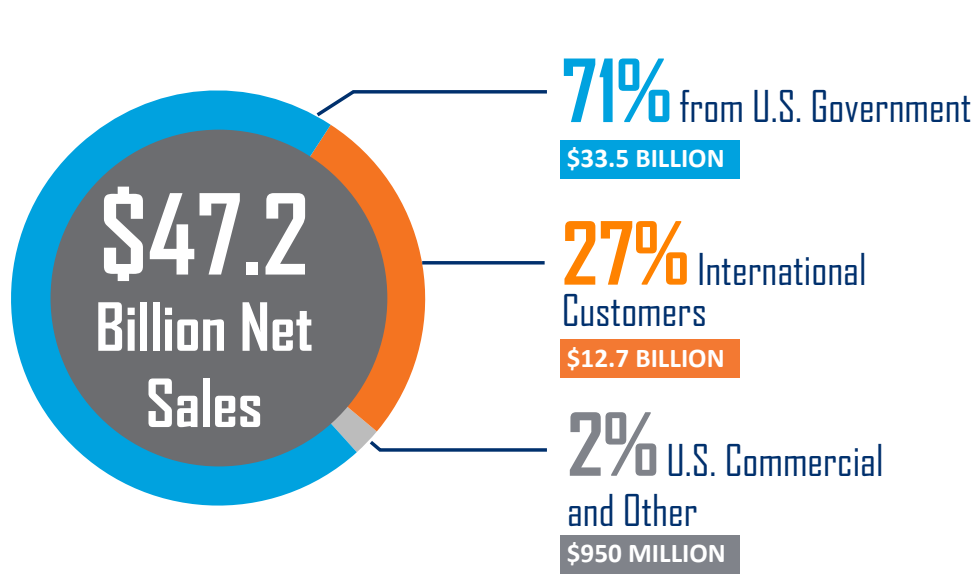


Space Systems Company creates technologies that power exploration, connectivity and security from space. Major programs include GPS III and secure communications, human and robotic exploration of deep space, strategic deterrence and missile defense, and commercial communications and remote sensing.

JOIN OUR TEAM  
LOCKHEEDMARTINJOBS.COM

LOCKHEED MARTIN

## FINANCIAL STRENGTH



TOTAL STOCKHOLDER RETURN 2014-2016:  
**84%** (DOW JONES INDEX 28%)



**14 CONSECUTIVE YEARS**  
WITH A DIVIDEND INCREASE OF  
**10% OR MORE**



NET EARNINGS: **\$5.3** BILLION

## COMMUNITY IMPACT

At Lockheed Martin, we're driven by a sense of purpose and passion to shape the future and solve the world's most difficult challenges. We bring that same passion and purpose to our communities, where our employees play an active role in strengthening the quality of life where we live and work.

**\$24.6 million**  
Corporate Philanthropy

Corporate Philanthropy

**\$7.3 million**  
Sponsorships of Local Organizations

Sponsorships of Local Organizations

**\$11.9 million**  
Employee Donations to Local Charities

Employee Donations to Local Charities

**850,000 hours**  
Employee Volunteer Hours

**82%**  
Community Initiatives

Community Initiatives

**13%**  
STEM Education

STEM Education

**5%**  
Military and Veteran Causes

Military and Veteran Causes

Lockheed Martin is committed to sustainability, and measured against a 2010 baseline, we have reduced our environmental footprint through the end of 2016:

Energy Use



down **21%**

Water Use



down **24%**

Carbon Emissions



down **29%**

## ECONOMIC IMPACT



LOCKHEED MARTIN PROGRAMS PROVIDED **\$19.5 BILLION** TO SUPPORT MORE THAN **16,000 SUPPLIERS** IN EVERY STATE ACROSS THE U.S.

LOCKHEED MARTIN PROGRAMS PROVIDED **\$9.6 BILLION** TO SUPPORT MORE THAN **1,500 SUPPLIERS** IN **65 COUNTRIES** AROUND THE GLOBE.

LOCKHEED MARTIN COMMITTED **\$4.3 BILLION** TO MORE THAN **9,900 SMALL BUSINESSES**.

## WHAT'S NEXT

Our technology strategy focuses our investments on customers' long-term requirements and areas we believe have great potential.

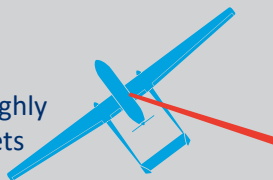
### Autonomy and Robotics

Our autonomy and robotics programs take on the riskiest jobs and keep people out of harm's way. They integrate with human teams to make people stronger, smarter and better equipped.



### Directed Energy

Directed energy systems use highly focused energy to disable targets with pinpoint accuracy. We've made strides in enhancing accuracy and maintainability, and are exploring ways to scale and integrate this technology in real-world applications.



### Cyber Security

Conflicts are becoming less physical and more virtual. We're building systems that protect against ever-evolving cyber threats, and keep data and networks secure and protected.



### Sensor Technology

Across land, sea, air and space, our sensors provide warfighters with complete, integrated situational awareness, enabling smarter, faster decision-making.



### Electronic Warfare

The electromagnetic spectrum allows our customers to communicate and monitor an adversary's communications. We're developing technology that protects customers' use of the spectrum and takes away an adversary's ability to communicate electronically.