

CZ 805 BREN

INSTRUCTION MANUAL
MANUAL DE INSTRUCCIONES
NÁVOD NA POUŽITÍ
BEDIENUNGSANLEITUNG
MODE D'EMPLOI



CZ 805 BREN A1



ČESKÁ ZBROJOVKA
SINCE 1936

Before handling the firearm read this manual carefully and observe the following safety instructions.

Improper and careless handling of the firearm could result in accidental discharge and cause injury, death or damage to property. The same repercussions can be caused by unauthorized modifications or adjustments, corrosion, or use of non-standard or damaged ammunition. In these cases the manufacturer shall not be held responsible in any manner whatsoever for the resulting consequences.

Before leaving the factory the firearm was tested, inspected and packaged in accordance with company policy. Ceska zbrojovka a.s. cannot accept responsibility for product handling whilst in transit after dispatch from the factory. Therefore, examine the firearm carefully upon receipt to ensure that it is unloaded and undamaged.

This instruction manual should always accompany the firearm in the event of loan or further sale.

CONTENTS

| | | | |
|-------------------------------------|----|---|----|
| SAFETY INSTRUCTIONS | 3 | Exchanging the barrel | 11 |
| FIREARM DESCRIPTION AND TERMINOLOGY | 5 | Using the blank shooting adaptor | 12 |
| OPERATING INSTRUCTIONS | 6 | Exchanging the magazine well | 12 |
| Ammunition | 6 | Changing the pistol grip back strap | 12 |
| Handling the stock | 6 | MAINTENANCE INSTRUCTION | 13 |
| Removing the magazine | 6 | Stripping the rifle for cleaning | 13 |
| Loading the magazine | 6 | Cleaning the Firearm | 14 |
| Loading the firearm | 7 | Cleaning the Barrel and the Chamber | 14 |
| Unloading the firearm | 7 | Cleaning of Other Parts | 14 |
| Setting the fire mode | 7 | Preservation of Firearm | 15 |
| Securing the firearm | 8 | Waste Management | 15 |
| Reloading while firing | 8 | TROUBLESHOOTING | 16 |
| Adjusting the sights | 8 | LIST OF PARTS | 17 |
| Sighting-in the firearm | 8 | Handling the firearm under adverse conditions | 18 |
| Attaching the special accessories | 10 | TECHNICAL DATA | 20 |
| Using the assault/combat knife | 10 | LIST OF ILLUSTRATIONS | 22 |

SAFETY INSTRUCTIONS

Always follow the safety instructions for your safety and the safety of others.

1. Always handle the firearm as if it were loaded.
2. Never point the firearm at anything you do not intend to shoot at. Also never point a firearm at anybody even in fun.
3. Never take anyone's word that the firearm is unloaded.
4. Always make sure that the firearm is not loaded before laying it down or handing it over to another person.
5. Always store the firearm unloaded with the striking mechanism released.
6. Never abuse the firearm by using it for any purposes other than shooting.
7. Never leave a firearm unattended.
8. Prior to loading the firearm ensure the barrel, chamber and action are clean and clear of obstructions. If the firearm becomes excessively dirty during firing clean it immediately. Always clean the firearm after use.
9. Always use clean and dry original high quality commercially manufactured ammunition, which corresponds to the caliber of the firearm.
10. Never drink alcohol or take drugs before and during shooting.
11. Whenever practical always wear safety glasses and ear protection while shooting.
12. When the firearm is loaded always keep the fire mode selector in the safe position until you are ready to fire. Keep the firearm pointed in a safe direction when disengaging the safety.
13. Always keep the ejection port clear of obstructions and people.
14. Never pull the trigger or put your finger within the trigger guard unless you are aiming at a target and ready to fire.
15. Always make absolutely sure of your target and the area behind it before pulling the trigger. The bullet can pass through or past the target up to several hundred meters.

16. Never shoot at a hard surface such as rock, or a liquid surface such as water.
17. Never fire near an animal unless it is trained to withstand the noise.
18. Never indulge in "horseplay" while holding the firearm.
19. Failure to fire: In case it fails to fire, hold the firearm keeping it pointed in a safe direction and wait 30 seconds. If a hangfire (slow ignition) has occurred, the cartridge will fire within 30 seconds. If the cartridge does not fire, eject the cartridge and examine it. If the firing pin indent on the cartridge is light, or non-existent, have the firearm examined by a competent gunsmith.
20. Always make sure your firearm is not loaded before cleaning, storing or travelling.
21. Always keep and store your firearm and ammunition in separate secure locations out of reach and sight of children and unauthorized persons.
22. Never alter any parts of your firearm; the safety and proper function of your firearm could be seriously affected.
23. Always be aware that corrosion, use of damaged ammunition, dropping the firearm on hard surfaces or other "rough treatment" can cause damage that is not necessarily obvious at first sight. If something like this happens, have the firearm examined and tested by a competent gunsmith.

FIREARM DESCRIPTION AND TERMINOLOGY

The designation of the main parts used in this Instruction Manual is presented in Fig. 1 on the inner page of the cover. Nomenclatures of all CZ 805 BREN parts are presented in the section *List of Parts*.

Designed for all kinds of troops, the CZ 805 BREN assault rifle is an automatic weapon intended for aimed shooting at ground targets, light-armoured targets and air targets. It enables the user to shoot single rounds, full bursts or limited, two-round bursts. It is provided with a folding shoulder stock and adjustable sights. The barrel is manufactured in two different lengths. The version with the standard barrel length is supplied under the name CZ 805 BREN A1 while the model with the shortened barrel bears the designation CZ 805 BREN A2. The rifle is equipped with a double-column magazine featuring a double-column mouth and a capacity of 30 cartridges. The characteristic features of the rifle include the following:

- the excellent balancing which ensures prompt and easy aiming at targets
- the facility to mount various accessories on Weaver rails designed according to MIL-STD-1913 standards
- the barrel and the magazine well can be exchanged without using any special tools
- the folding stock can be removed
- the barrel muzzle is provided with a thread enabling the attachment of various accessories (such as flash hider, sound suppressor, etc.)
- the control elements provide for easy and comfortable use as well as for the possibility of ambidextrous handling
- the firearm can be easily stripped for cleaning and routine maintenance
- high accuracy of shooting
- long service life
- high reliability

OPERATING INSTRUCTIONS

Ammunition

Always use brand ammunition of corresponding caliber which complies with the NATO STANAG 4172 or ČOS 13 0503 standards. The use of different ammunition can cause functional defects, damage to the firearm or injury to the user.

Handling the stock

The shoulder stock can be folded towards the right side of the receiver while pressing the side locking detent (Fig. 2). Once the stock is fully folded, it is then held in this position. When unfolding the stock it is necessary to overcome mild resistance caused by the hold-down element. It is best to finish unfolding the stock with an energetic movement of your hand. The stock is secured when the side locking detent engages into the slot producing an audible sound.

If required the stock can be removed from the firearm and replaced by a different stock. When attaching the stock to the rifle always make sure that the disassembly button is engaged properly.

Removing the magazine

Grasp the magazine with one hand and press the magazine release (Fig. 3); the magazine will spring out of the magazine well. Remove the magazine out of the firearm.

Loading the magazine

Grasp the magazine with its open end pointing upwards. Put a cartridge onto the follower and push it downwards. Put another cartridge onto the previous one and push it in the same way.

Loading the firearm

WHEN LOADING THE FIREARM ALWAYS POINT IT IN A SAFE DIRECTION!

Insert the loaded magazine into the rifle until it produces an audible noise and make sure that it is secured by the magazine release.

Set the fire mode selector into one of the fire modes depending on the requirement, as indicated in the part *Setting the fire mode*.

When the fire mode selector is in the "safe" position it is not possible to move the breech block carrier.

Grasp the handle of the breech block carrier, move it smoothly to its rearmost position (Fig. 4) and release it. During this process, a cartridge is inserted into the chamber and the striking mechanism is drawn. The rifle is now ready to fire. In case you do not intend to shoot right away, secure the rifle as described in the section *Securing the rifle*.

Unloading the firearm

POINT THE FIREARM IN A SAFE DIRECTION!

- Remove the magazine as described above
- Set the fire mode selector into one of the fire modes
- Pull the breech block carrier into the rear position and make sure that the cartridge has been extracted from the chamber and ejected out of the rifle
- Release the breech block carrier
- Pull the trigger (dry fire)

Setting the fire mode

The CZ 805 BREN assault rifle enables the user to shoot in three different modes of fire, these are set by the lever of the fire mode selector which is situated on the side wall of the receiver.

If the lever of the fire mode selector is set into the position indicated with one red dot, the single round mode is activated. The limited, two-round burst is activated by shifting the lever of the fire mode selector into the position indicated with two red dots. The full burst mode is activated by shifting the lever of the fire mode selector into the position indicated with five red dots.

Securing the firearm

In order to secure the rifle it is necessary to set the lever of the fire mode selector into the position indicated by a white dot (Fig. 5). In this condition it is not possible to pull the trigger or manipulate the breech block carrier.

Reloading while firing

After the last cartridge has been fired from the magazine, the breech block carrier remains in the rear position (so called locked-open position). Remove the empty magazine and insert a loaded one. Pull the breech block carrier into the rearmost position and release it with an energetic movement. The rifle is now reloaded and ready to shoot again.

Adjusting the sights

The folding rear sight can be adjusted for windage with the help of the adjustment key. The folding front sight can be adjusted only for elevation by tightening or loosening it with the help of the adjustment key. In order to fold the sights it is necessary to press the side locking button.

Position no. 1 is used for the attachment of the front sight on the upper Weaver rail while the position no. 31 is used for the attachment of the rear sight. The sights which are supplied with the rifle can be substituted by different ones.

Regularly verify that the sights (front and rear sight) are tightened properly, preferably always after having completed the cleaning or other maintenance procedures of the rifle. If the securing screws are loosened tighten them. In case of using the rifle with loose sights there is a risk that the grouping at the target will get worse or that the sights or their parts might get lost!

Sighting-in the firearm

All firearms dispatched from the factory were sighted-in, which means that the sights were adjusted for both windage and elevation. In order to have the rifle sighted-in properly it is necessary to combine the windage adjustment of the rear sight and the elevation adjustment of the front sight. The adjustment is conducted with the help of the adjustment key included in the cleaning kit as well as in the gunsmith's kit.

In case the rifle is being sighted-in for a target at a distance of 100m it is necessary to shoot 8 rounds aiming at the bottom center of the black diagram of the target no. 4 (a target with an uncovered lying statuette and circles). The fire is evaluated by hand. Before you start

shooting it is necessary to check whether the sights have been attached in the mounting rail properly and whether the collimator has been turned onto the small aperture. For the purpose of sighting-in, 8 cartridges are fired in single shot mode while aiming at the correct point of aim. After the 8 cartridges have been shot it is necessary to check the target and evaluate both the dispersion and the central point of impact. The centres of the impact of all the 8 shots must be covered by a 116mm diameter circle, the central point of impact of the 8 shots must fall within a 110mm diameter circle of the point of aim.

In case the rifle does not comply with the requirement on the central point of impact it is necessary to adjust the sights either for windage (adjusting the rear sight) or for elevation (adjusting the front sight). For the purpose of a correct sighting-in of the rifle it is usually necessary to adjust for both windage and elevation.

Windage adjustment of the rear sight

In case the central point of impact is not satisfactory in the horizontal plane, the windage adjustment of the rear sight must be carried out. The adjustment is carried out with the help of the adjustment key (in case of emergency the tip of a cartridge case can be used but the cartridge cannot be used for shooting afterwards) by rotating the adjustment device of the rear sight by the required number of twists:

- clock-wise (by twisting it to the right) in case that the central point of impact lies to the right in the target
- anti-clockwise (by twisting it to the left) in case that the central point of impact lies to the left in the target

One click of the adjustment device means that the central point of impact is shifted horizontally by 16mm when shooting at a distance of 100m.

Elevation adjustment of the front sight

The elevation adjustment of the front sight is carried out in case the central point of impact is not satisfactory in vertical plane. The adjustment is carried out by the adjustment key (in case of emergency the tip of a cartridge case can be used but the cartridge cannot be used for shooting afterwards) by rotating the front sight by the required number of twists:

- clock-wise (by twisting it to the right) in case that the central point of impact lies towards the top in the target
- anti-clockwise (by twisting it to the left) in case that the central point of impact lies towards the bottom in the target

One click of the front sight means that the central point of impact is shifted vertically by 58mm when shooting at a distance of 100m.

Attaching the special accessories

In order to attach special accessories, the firearm is equipped with three Weaver rails according to MIL-STD-1913 standards. It is recommended to check the tightness of the securing screws of the rails regularly and tighten them if necessary.

Using the assault/combat knife

The CZ 805 assault/combat knife system consists of the knife, its scabbard and the scabbard sling.

The assault/combat knife is a universal, modular cold weapon which can be adjusted to individual needs of the user by exchanging the shield and the base of the knife. It is both a stabbing and a cutting weapon and when combined with its scabbard it can also be used as a wire cutter, e.g. for the purpose of cutting barbed wire. When attached to the firearm, the knife's purpose is purely for stabbing. It consists of the blade (which can be equipped with a handsaw), the shield (assault or combat one), the handle, the insert, the securing screw and the base (either the assault base which is fitted with release clips or the combat base).

The scabbard serves mainly for safe keeping of the knife. It consists of a polymer body provided with a cavity for the purpose of the knife's storage and a single blade located at the bottom of the scabbard which, in combination with the knife, serves as the wire cutter.

The thigh swivel of the knife serves as the attachment of the scabbard with the knife onto the corresponding part of the armament. It was designed as a modular attachment element enabling various modes of use. It consists of the main, reinforced base manufactured from textile and a system of textile straps fitted with studs and attachment clips.

Handling the assault/combat knife

THE KNIFE CAN BE USED ONLY WHEN THE FIREARM IS UNLOADED AND WITH APPROPRIATE CARE!

The slot for the knife's attachment is located on the bottom part of the gas extender. The knife is attached by inserting the shield loop of the knife onto the flash hider and by introducing the handle base of the knife into the slots situated on the gas extender. The blade must point upwards.

In order to remove the knife it is necessary to press both the buttons located on the base of the knife's handle (Fig. 6).

Note: Because of its shortened barrel, the CZ 805 BREN A2 cannot be used with the assault knife.

Exchanging the shield and the base of the knife

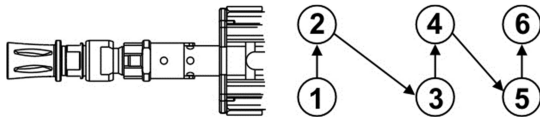
After the securing screw has been loosened (with the help of the multipurpose key with the TORX X25 head included in the cleaning kit) the knife's base assembly (with the release clips), or the knife's handle as such can be removed. Once the knife's handle has been removed it is possible to loosen the thread insert of the blade and remove the knife's shield out of it. The shield can be replaced by the assault or combat shield included in the accessories kit according to the preferences of the user.

The assault knife shield is usually used together with the base with clips. The combat knife is usually used together with the base without clips. Both shields with knife's bases can be combined in various modes, however the function of the assault knife is limited.

Exchanging the barrel

The barrels can be exchanged regardless of the type of the rifle. The barrel exchange can be carried out once the lateral securing screws have been removed. Afterwards it is possible to remove the barrel assembly from the receiver by removing it axially. When tightening the screws, use the torque key with a preset torque of 8 N/m and follow the prescribed order in which the screws must be tightened. Start at the muzzle with the rifle pointed in the direction of the fire - see the scheme below. First of all the front left screw is to be tightened, then the front right screw, followed by the middle left screw and the middle right screw and concluded with the rear left screw and the rear right screw.

Note: After each barrel exchange it is recommended to carry out sighting-in of the rifle.



Using the blank shooting adaptor

The blank adaptor enables the user to shoot in automatic mode when using blank cartridges. It is introduced into the thread at the muzzle after having the flash hider removed. In order to mount the blank adaptor it is convenient to use the mounting key no. 17.

In order to attach the flash hider to the rifle again, it is necessary to screw the flash hider nut up to the end of the barrel thread (the barrel has a left-hand thread), then introduce the washer and screw the flash hider up to the front part of the barrel mouth; subsequently, tighten the nut with the spacer against the rear head of the flash hider by using the mounting keys no. 17.

The "SOLO" blank adaptor is mounted onto the rail of the flash hider. Afterwards, the adaptor screw is screwed in tight to a position where the screw head touches the barrel mouth.

Due to the colourful effect, the use of blank cartridges may lead to a troublesome fouling of the rifle which may be difficult to remove. Therefore we recommend to apply a gun oil prior to shooting blank cartridges. During the fire (after approximately 150 rounds) it is necessary to check the tightness of the adaptor and in case the rifle becomes excessively fouled, it is necessary to clean it. Beware of burn injuries! Use gloves or other protection.

The CZ 805 BREN A1 model always needs to have the gas tube pre-set at an extensive gas extraction which is achieved by pressing the gas tube pin and twisting the gas tube into the position indicated with a big white slot.

Exchanging the magazine well

Each rifle can be supplied with an exchangeable magazine well. In order to exchange the well it is necessary to remove the pin which connects the magazine well assembly with the pistol grip. In case the magazines from the M16 rifle are used, it is necessary to use the corresponding magazine well.

Changing the pistol grip back strap

Each rifle can be supplied with a spare back strap which enables the rear part of the pistol grip handle to be adjusted according to the needs of an individual user. The back strap can be changed after the back strap pin (which is secured by a glue) is removed and the back strap is removed from the rails of the pistol grip.

MAINTENANCE INSTRUCTION**Stripping the rifle for cleaning**

1. Remove the magazine and set the fire mode selector into one of the fire modes positions.
2. Pull the breech block carrier into the rear position and make sure that the cartridge has been extracted out of the chamber and ejected out of the rifle. Release the breech block carrier.
3. Press the front disassembly pin from aside the firearm and remove it (Fig. 7). Remove the pistol grip with the magazine well.
4. Press the rear disassembly pin aside the firearm and remove it.
5. Press the stock disassembly button fully (Fig. 8) and remove the whole stock by sliding it downwards.
6. Remove the recoil assembly.
7. Move the breech block carrier into the rear position where it is possible to release the handle of the breech block carrier. Then remove the handle of the breech block carrier and eject the breech block carrier assembly out of the firearm (Fig. 9).
8. Press the gas tube pin (Fig. 10), twist the gas tube to the extraction position and remove the gas tube from the rifle. Now you can remove the piston assembly as well.

Note: The breech block carrier handle can be mounted on both left and right side depending on the preferences of the user.

CAUTION:

Do not strip the rifle any further. If you assume that the rifle requires adjustment or repair, entrust this work to a competent gunsmith!

Cleaning the Firearm

Clean the Firearm

- after every use
- if it gets wet
- immediately after shooting
- at least once a year in temperate climates
- as often as once a month in tropical or extreme climates

Cleaning the Barrel and the Chamber

If the firearm has not been fired or if only a few cartridges have been fired clean the barrel and chamber by a clean patch attached to the cleaning rod. Repeat the cleaning, changing patches, until the last patch comes out clean.

If the barrel is very dirty, apply a gun cleaning solution with the aid of a cleaning brush. Let the solvent act for about 10 minutes (this time may vary depending on the solvent agent being used). Then scrub out the barrel thoroughly. Subsequently, dry the barrel and chamber with a clean patch and check that all powder residue or fouling has been removed. If necessary repeat this procedure. The cleaning rod and the brush must be inserted into the barrel from the chamber to prevent wear or damage to the muzzle. Pull the brush all the way through the barrel before reversing the movement. If you tried to change the direction of pulling, the brush would get stuck in the barrel.

Cleaning of Other Parts

Clean the remaining metal parts of the rifle with a dry cloth, or use the brass or nylon brush or the scraper included in the Cleaning kit of the rifle. Preserving oil or paraffin oil can be used for proper cleaning. Never use the agent designed for barrel cleaning! These solutions can remain in the joints causing corrosion after some time. Check that cloth particles or brush bristles have not lodged in any part of the firearm.

Preservation of Firearm

When the barrel, chamber, and all accessible parts are clean and dry, wipe these parts with a cloth soaked in gun oil or apply oil in spray form. Remove all excess oil.

Before shooting always pull through the barrel with a dry patch. At very low temperatures remove the oil from all accessible parts or apply a lubricant intended especially for such conditions.

Use thick preserving agents such as preserving grease only for a long-term storage in severe climatic environments and remove it thoroughly before use from all parts of the firearm.

Waste Management

When used properly, the materials used in the product and its packaging have no adverse effects on human health or the environment. When disposing of the product or its packaging, all metal parts (steel and non-ferrous metals), plastics, wood, paper and cardboard should be stored separately in collecting containers intended specifically for that purpose.

TROUBLESHOOTING

If the firearm is properly used and maintained, malfunctions will rarely occur. However, if such a situation should occur, please observe the following instructions.

CAUTION - if a malfunction occurs, the risk of an accidental discharge is substantially higher. For this reason, when clearing malfunctions, follow the above mentioned Safety Instructions. Keep the firearm pointed in a safe direction, do not turn the firearm towards you or anyone else's body. Do not place your hands in front of the barrel!

| Malfunction | Possible Cause | Remedy |
|---|---|---|
| Cartridge is not fed into the chamber or the bolt is not locked | Magazine is not fully inserted or is damaged. The firearm or cartridges are fouled (dirty). | Insert magazine properly or change magazine. Clean the firearm and cartridges and wipe them dry or as the situation dictates, slightly lubricate. |
| Misfire | Defective cartridge. The bolt is not locked. Firing Pin hole is fouled (dirty) or improper lubricant was used in low temperature. | Follow the Safety Instructions according to point 19. Push the bolt into its front position with an energetic movement of your hand. Have the gun cleaned by a gunsmith or use a low temperature lubricant. |
| A shot sounds "weak" | The cartridge has been activated but no powder load was inside the cartridge case or the powder was moist. | Unload the firearm and check that the bullet has not obstructed the barrel. Firing with the gun in this condition can cause injury and damage the barrel! |
| The spent cartridge case has not been ejected | Chamber, extractor or ammunition are dirty or unsuitable lubricant was used in low temperature. | Clean and wipe the firearm dry and lubricate slightly with recommended lubricant. Use clean and new ammunition. |
| The bolt remains in the rear position while firing | The bolt or the guide rails are dirty. | Clean the gun dry and/or use a suitable lubricant. |

If you are not able to clear the malfunction in a manner described above, entrust the firearm to a competent gunsmith for inspection and repair.

LIST OF PARTS

| | | | |
|-----------------------------------|------------------------------------|--------------------------------------|--|
| 1 Barrel (Assembly) | 32 Disassembly button pin | 61 Firing pin sleeve | 86 Trigger spring |
| 2 Front barrel sleeve | 33 Shoulder stock | 62 Firing pin spring | 87 Trigger spring safety |
| 3 Mounting rail | 34 Stock joint | 63 Firing pin plug | 88 Trigger spring safety pin |
| 4 Mounting rail screw (4x) | 35 Stock positioner | 64 Pistol grip | 89 Automatic trigger |
| 5 Flash hider nut | 36 Stock positioner spring (2x) | 65 Back strap | 90 Automatic trigger spring |
| 6 Flash hider washer | 37 Stock pin | 66 Back strap pin | 91 Automatic trigger spacer (2x) |
| 7 Flash hider | 38 Stock detent | 67 Magazine well | 92 Hammer |
| 8 Piston | 39 Stock detent spring | 68 Magazine release | 93 Hammer pin |
| 9 Piston spring rest | 40 Stock detent pin | 69 Magazine release pin (2x) | 94 Hammer stop |
| 10 Piston spring | 41 Recoil spring | 70 Magazine release spring | 95 Hammer stop spring |
| 11 Piston buffer | 42 Buffer | 71 Bolt release | 96 Hammer stop pin |
| 12 Piston pin (3x) | 43 Buffer pin | 72 Bolt release guide | 97 Main spring |
| 13 Gas tube | 44 Recoil assembly bar | 73 Washer | 98 Fire mode selector |
| 14 Gas tube pin | 45 Recoil guide tube (assembly) | 74 Bolt release spring | 99 Fire mode selector pin |
| 15 Gas tube pin spring | 46 Recoil spring washer | 75 Manual emergency button | 100 Fire mode selector lever, left |
| 16 Gas tube pin | 47 Rear guide locking piece | 76 Manual emergency button spring | 101 Ratchet |
| 17 Receiver | 48 Front guide locking piece | 77 Disassembly pin (2x) | 102 Ratchet spring |
| 18 Deflector | 49 Breech block carrier | 78 Disassembly pin spring (2x) | 103 Fire mode selector lever, right |
| 19 Deflector pin | 50 Breech block | 79 Disassembly pin plug (2x) | 104 Magazine body |
| 20 Receiver insert, front (2x) | 51 Extractor | 80 Trigger mechanism housing | 105 Follower |
| 21 Side Weaver rail (2x) | 52 Extractor spring | 81 Trigger | 106 Magazine spring |
| 22 Securing screw (6x) | 53 Ejector | 82 Trigger spacer (2x) | 107 Magazine base |
| 23 Securing screw washer (6x) | 54 Ejector spring | 83 Ratchet catch | 108 Magazine base catch |
| 24 Breech block carrier handle | 55 Manual emergency pin | 84 Ratchet catch spring | 109 Spring element |
| 25 Front swivel | 56 Operation pin | 85 Automatic trigger pin (3x) | 110 Front sight |
| 26 Front swivel screw | 57 Firing pin block | | 111 Rear sight |
| 27 Rear swivel | 58 Firing pin block pin | | |
| 28 Extractor and ejector pin (2x) | 59 Firing pin block spring | | |
| 29 Rear head | 60 Firing pin | | |
| 30 Disassembly button | | | |
| 31 Disassembly button spring | | | |

Handling the firearm under adverse conditions

Submerging the firearm under water

If the rifle is submerged under water (water penetrating into the gas extraction system or into the mechanism of the rifle) the firing must be carried out with the gas tube set at an extensive gas extraction. In order to ensure reliable function of the rifle after it was submerged under water (e.g. while crossing water obstacles) it is necessary to lubricate the functional surfaces of the main parts of the rifle. The parts must be cleaned dry with the help of cloths and lubricated with a WD 40 solution. The chamber and the inside of the barrel must be cleaned dry as well as the magazines.

In case the rifle was submerged under water it is necessary to shake the water out once the rifle is removed from the water, with the muzzle aiming downwards under the angle of approximately 45°. This can be carried out in open air when the weather is warm, in cold weather the process must be carried out in a room where the minimum temperature is +15°C.

Combined climate conditions (in dusty environment, during rain and after rain)

The rifle should be fired with the gas tube set for extensive gas extraction. In order to ensure reliable function of the rifle while it is used in dusty environments, during or after rain it is necessary to lubricate the functional surfaces of the main parts of the rifle. The parts must be cleaned dry with the help of a cloth and lubricated with a WD 40 solution. The chamber and the inside of the barrel must be cleaned dry as well as the magazines. Make sure your hands are clean and dry when loading cartridges into the magazine.

Using the firearm under low temperatures (down to -50°C)

The rifle should be fired with the gas tube set for extensive gas extraction. In order to ensure reliable function of the rifle it is necessary to lubricate the functional surfaces of the main parts of the rifle (receiver, breech block carrier and breech block) with the MOLYKOTE 55M vaseline. The chamber and the inside of the barrel must be cleaned dry.

In case a defect in the function of the firearm occurs, observe the following instructions:

- point the rifle in a safe direction, remove the magazine and make sure there is no cartridge in the chamber
- pull the bolt into the rear position, release it and pull the trigger - carry out this procedure at least three times in sequence

In order to ensure reliable function throughout the service life of the rifle (especially under adverse conditions) the manufacturer recommends that the rifle is cross-checked by a specialized gunsmith after having fired 5000 rounds. The cross-check should be focused on the examination of the following main parts of the firearm:

- barrel assembly with receiver
- pistol grip with magazine well
- disassembly pins
- piston (assembly)
- gas tube
- breech block carrier (assembly)
- recoil assembly
- breech block carrier handle
- shoulder stock (assembly)
- rear head (assembly)
- sights

In case of excessive deterioration of functional surfaces or before a breakage of one of the parts is found, it is recommended to replace them pre-emptively with a corresponding part from the spare parts set.

| Recommended replacement of the parts for the purpose of ensuring reliable function | Recommended replacement after (number of cartridges fired) |
|---|--|
| Breech Block, Extractor, Extractor spring with spring element Ejector, Ejector spring Firing pin plug Extractor and ejector spring | 10 000 rounds |

TECHNICAL DATA

| Model | | CZ 805 BREN A1 | CZ 805 BREN A2 |
|--|-------------|-----------------|-----------------|
| Caliber | | 5,56x45 mm NATO | 5,56x45 mm NATO |
| Length of rifle with the stock unfolded (without butt plate) | [mm] | 870 ± 5 | 787 ± 5 |
| Length of rifle with folded stock | [mm] | 670 ± 5 | 582 ± 5 |
| Length of rifle with the stock unfolded and with assault knife attached (without butt plate) | [mm] | 1090 ± 5 | - |
| Width of rifle with the stock unfolded | [mm] | 77 ± 2 | 77 ± 2 |
| Width of rifle with folded stock | [mm] | 112 ± 2 | 112 ± 2 |
| Height of rifle with magazine, without sights | [mm] | 260 ± 2 | 260 ± 2 |
| Barrel length | [mm] | 360 ± 1 | 277 ± 1 |
| Number of grooves in the barrel | | 6 | 6 |
| Rifling of the barrel (rightward) | [mm/turn] | 178 ± 5 | 178 ± 5 |
| Sight radius (with fixed sights) | [mm] | 395 ± 1 | 395 ± 1 |
| Effective range * | [m] | 500 | 400 |
| Theoretical rate of fire | [shots/min] | 760 ± 100 | 760 ± 100 |

INSTRUCTION MANUAL

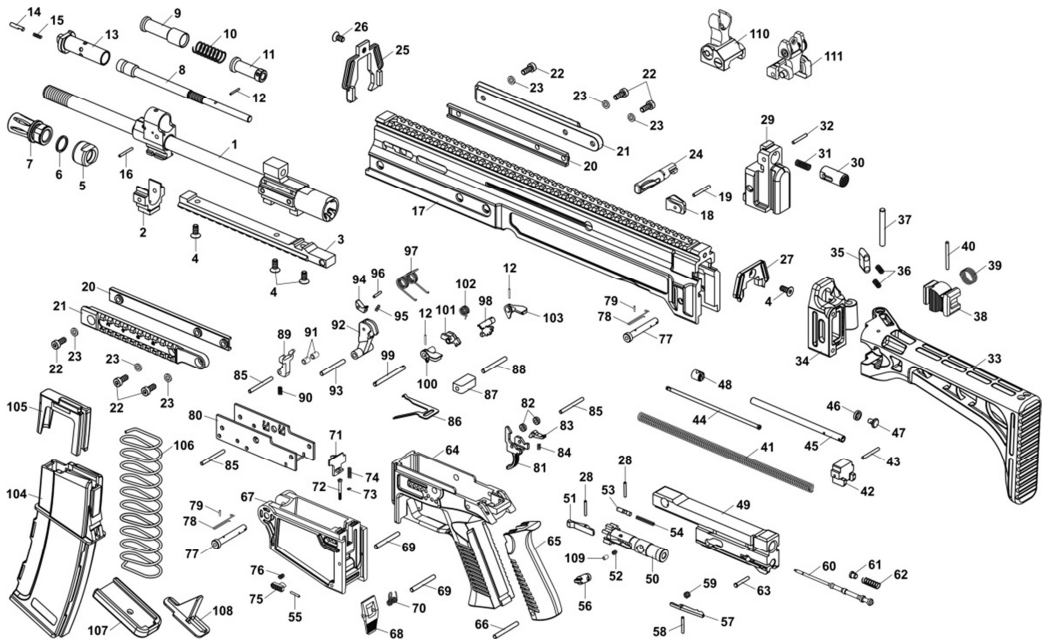
| Model | | CZ 805 BREN A1 | CZ 805 BREN A2 |
|---|--------------|----------------|----------------|
| Magazine capacity | [cartridges] | 30 | 30 |
| Weight of empty magazine | [g] | 195 ± 10 | 195 ± 10 |
| Weight of loaded magazine * | [g] | 570 ± 10 | 570 ± 10 |
| Weight of rifle without magazine and sling | [g] | 3490 ± 30 | 3410 ± 30 |
| Weight of magazine pouch with two empty magazines | [g] | 560 ± 10 | 560 ± 10 |
| Weight of magazine pouch with three empty magazines | [g] | 790 ± 10 | 790 ± 10 |
| Weight of the CZ 805 assault/combate knife | [g] | 400 ± 10 | - |

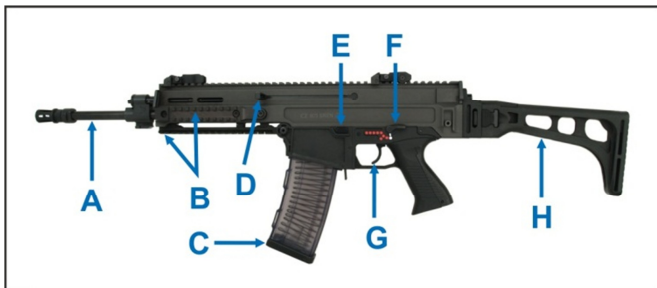
* depending on the type of ammunition used (the data indicated here apply to the S&B Vlačim ammunition, the SS 109/4,0 g bullet)

The manufacturer reserves the right to adopt changes which are essential for the improvement of its products or which need to be adopted in order to meet requirements given by production or by the market. An individual rifle needs not correspond to the pictures displayed in this manual and the change of the shape of some of the parts does not deteriorate the safety, reliability or the function of the firearm

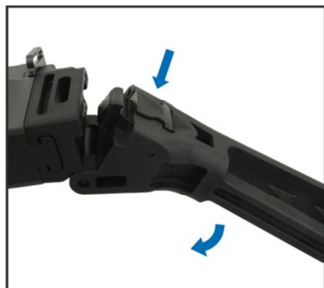
LIST OF ILLUSTRATIONS

1. Main parts nomenclature
 - A) Barrel
 - B) Rails for the attachment of special accessories
 - C) Magazine
 - D) Breech block carrier handle
 - E) Manual emergency button
 - F) Fire mode selector lever
 - G) Trigger
 - H) Shoulder stock
2. Folding the stock
3. Removing the magazine
4. Loading the firearm
5. Secured firearm
6. Removing the assault/combat knife
7. Removing the front disassembly pin
8. Removing the stock
9. Removing the breech block carrier assembly
10. Removing the gas tube and the piston





1



2



3



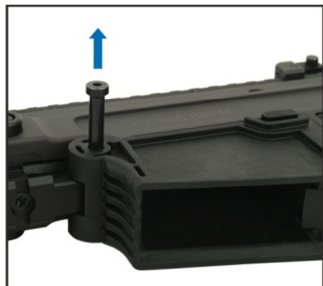
4



5



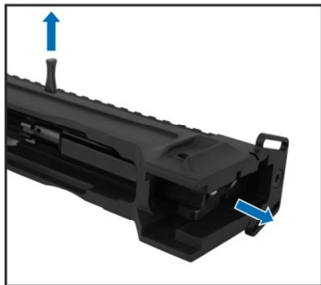
6



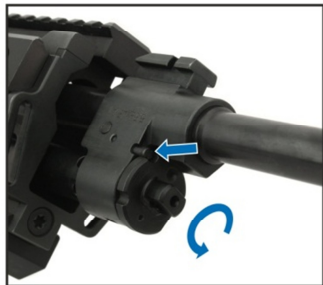
7



8



9



10