

# EXPRESS PARTS

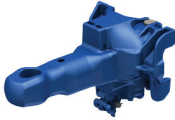
## HEAVY HAUL SOLUTIONS



Our Innovation. Your Advantage.



## Couplers



A358TS	COUPLER A358 - TOP OPERATED
A156TK	A156 COUPLER - TOP OPERATED
A193TG2	A193 COUPLER TOP OPERATED
A229TK	A229 COUPLER TOP OPERATED
A267TK	A267 COUPLER TOP OPERATED
A350RC	A350 UC COUPLER ROTARY
A351RC	A351 UC COUPLER
A121TG	COUPLER A121 TOP OPERATED
BK18452B	COUPLER A150 ASSEMBLY
A156BK	COUPLER A156 BOTTOM OPERATED
A170RR	COUPLER A170 BOTTOM OPERATED
BK8919	COUPLER A170 BOTTOM ROTARY BOTTOM SHELF
A171RR	COUPLER A171 BOTTOM ROTARY BOTTOM SHELF
A193RG	COUPLER A193 BOTTOM ROTARY OPERATED
A204TK	COUPLER A204 TOP OPERATED
A206RK	COUPLER A206 BOTTOM ROTARY
A244BK2	COUPLER A244 BOTTOM OPERATED BLACK
A254TR	COUPLER A254 TOP OPERATED

A258RR	COUPLER A258 HD BOTTOM ROTARY
A259RK	COUPLER A259 BOTTOM ROTARY
A262TK	COUPLER A262 TOP OPERATED
A267RK	COUPLER A267 BOTTOM ROTARY BOTTOM SHELF
A302RK	COUPLER A302 ROTARY OPERATED
A307RK	COUPLER A307 BOTTOM ROTARY
A319RR	COUPLER A319 BOTTOM ROTARY
A331TR	COUPLER A331 TOP OPERATED
A335TK	COUPLER A335 TOP OPERATED
A358TC	COUPLER A358 TOP OPERATED CLEAR
A358TK	COUPLER A358-2 TOP OPERATED
A372RK	COUPLER A372
A273TK	COUPLER TOP OPERATED
A150TR	COUPLER TOP OPERATED
AC5277	COUPLER WITH D/GEAR COMPLETE
A323RC	ROTARY COUPLER FIXED SHANK
A322RC	ROTARY COUPLER ROTARY SHANK
A201BK	SLACK CONTROLLED AUTO COUPLER

## Draft Gears & Spares



SL76	DRAFT GEAR CHASSIS EQUIPMENT
CROWN SE	DRAFT GEAR M901E
TF880	DRAFTGEAR M901E
AE762	DRAFTGEAR QUIKDRAW ULTRA-LITE
W11479	FOLLOWER TOP
W11059	INSERT PRE-SHORTENING
W11477	PADS TECSPAK
AC2156-2	PAD-SINGLE OH DRAWGEAR ASSY

D-11518	PRE SHORTENING INSERT
W11480	SHOE
BK729	SIDE WEDGE FRICTION DRAFT GEAR
W11481	WEDGE
W10368	OUTER STATIONARY PLATE CE 6
W10364	SHOE WEDGE (R500)
W10366	TAPERED STATIONARY PLATE (R500)
W11477	PADS TECSPAK

## Yokes



AE120-3K2	YOKE AE120 QUAD SHEAR
AE144-2K	YOKE AE144
AE231-3G2	YOKE AE231
AE240-4R	YOKE AE240
AE240-3R	YOKE AE240
AE255-3B	YOKE AE255
AE270-1C	YOKE AE270 NO WEAR PLATE CLEAR (ROTARY)
AE270-2C	YOKE AE270 UC ROTARY END CLEAR
AE271-1C	YOKE AE271 NO WEARPLATE CLEAR (FIXED)
AE271-2C	YOKE AE271 UC FIXED END CLEAR

AE426-3K	YOKE AE426
AE433-3K	YOKE AE433
AE433-3G	YOKE AE433
AE702-4R	YOKE AE702
BK21283	YOKE AE767 SHORT TO SUIT QUIKDRAW
AE200-3K	YOKE ASSY AE200
AE200-3B	YOKE ASSY AE200
AE183-4B	YOKE BODY
AE231-3	YOKE AE231
AE270-5K	ROTARY YOKE AE270

## Knuckles/Lifters



AE316P	KNUCKLE & KNUCKLE PIN
AE320	KNUCKLE 10A CONTOUR REDUCED SLACK FOR ULTRA CAPACITY COUPLER
AC4031	KNUCKLE 11
AE316	KNUCKLE 11 FACE 10A CONTOUR WITH REDUCED SLACK FEATURE
BK6154	KNUCKLE ASSEMBLY
AE649	KNUCKLE REDUCED SLACK ULTRA CAPACITY ALLIANCE COUPLER
AE547	KNUCKLE WITH REDUCED SLACK FEATURE
AE303	KNUCKLE 11 10A CONTOUR UPWARD
AE77	LOCK STANDARD

AE279	LEVER ROTOR
AE79	LIFTER BOTTOM STANDARD
AE242	LIFTER TOP STANDARD
AE80	PIN KNUCKLE PIVOT DEE HEAD 42MM DIA X 340MM LONG (NOM)
AE97	PIN KNUCKLE PIVOT ROUND HEAD 42MM X 366MM LONG (NOM)
AE322	PIN PIVOT 1.654 DIA X 14.8 LONG
COM0646	BRAKE BLOCK KEY ALT.NO 1201034(DRG. H83-11329)
BG3574	KEY BRAKE BLOCK SSRIC BOGIE
	408-003/1 KEYBRAKE BLOCK BOGIE GENERAL
	BG2580 KEY BRAKE SHOE ROTARY DUMP

## Springs/Friction Shoes/Followers



RC59	SPRING COIL INNER RIDE CONTROL BOGIES
AE681	SPRING COMPRESSION ULTRA COUPLER ROTARY
RC128M	SPRING INNER COIL D3
RC330	SPRING INNER INNER BOLSTER
RC321	SPRING INNER SSRC BOGIE
AE84	SPRING KNUCKLE TORSION ROUND MATERIAL
RC127M	SPRING OUTER COIL D3
RC247	SPRING RIDE CONTROL SSRC BOGIE
RC58M	SPRNG COIL OUTER

AE664	FOLLOWER FRONT ULTRA HEAVY DUTY COUP ROT END
AE223	FOLLOWER FRONT(U0757)
AE319M	FOLLOWER RF361 DRAFT GEAR
RC226	FRICITION SHOE WINGED
RC246	SHOE WINGED FRICTION
AC1877	SHOE FRICTION
RC54	SHOE FRICTION
RC125	SHOE WINGED FRICTION
10455	CLASS K ADAPTOR PLUS (INCLUDES ADAPTOR CASTING+ELAST. PAD)
U0333	FOLLOWER FRONT

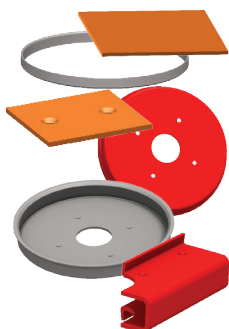
## Brake Beams



BB618RH	BEAM BRAKE RIGHT HAND NO.18. 70 TONNE (BB818RH)
BB618LH	BEAM BRAKE LEFT HAND NO.18. 70 TONNE (BB818LH)
BG3226	BRAKE BEAM A/D
BG3538	BRAKEBEAM AD
BG3539	BRAKEBEAM OH
BG3050	BEAM BRAKE A/D RIGHT HAND

BG3791	BRAKE BEAM (OPP. HAND) L.H. TREADWELL HOT METAL CAR
BG3507	BRAKE STRUT FOR BRAKE BEAMS AS DRAWN
BG3508	BRAKE STRUT FOR BRAKE BEAMS OPP. HAND
BG2185	HEAD BRAKE A/D
BG2186	HEAD BRAKE O/H

## Wear Liners/Rubber Pads



AC2721	PAD - DOUBLE DRAWGEAR ASSEMBLY
AC2156-1	PAD - SINGLE AD DRAWGEAR ASSEMBLY AC3730
AC1109	PAD RUBBER DOUBLE
AC1108	PAD RUBBER SINGLE
AC2721	PAD - DOUBLE DRAWGEAR ASSEMBLY
AC2156-1	PAD - SINGLE DRAWGEAR ASSEMBLY
AC1109	PAD RUBBER DOUBLE
AC1108	PAD RUBBER SINGLE
AC2156-2	PAD SINGLE OH DGEAR ASSY
WE-4110-04B	PLATE WEAR HOLLUBE
WE-4110-04A	PLATE WEAR NON METALLIC HOLLUBE

B1463	WEAR LINER POCKET HOLLUBE RIDE CONTROL BOGIE
B138	WEAR PLATE POCKET
B875	WEAR PLATE POCKET BOGIE
B1838	WEAR PLATE SLOPE SURFACE A/D SSRC BOGIE
B1839	WEAR PLATE SLOPE SURFACE O/H SSRC BOGIE
B1547	WEAR PLATEPEDESTAL ROOF BOGIE TRANSDYNE AISIC-1095
AE635	WEAR PLATES
B1032	LINER CUPPED
B633	LINER CUPPED 305MM DIA.
B1033	LINER CUPPED 356MM DIA
B1099	LINER CUPPED BOLSTER
B500	WEARPLATE CUPPED

## Constant Contact Sidebearers



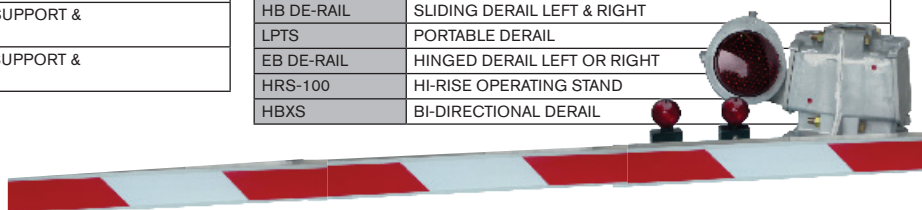
TCC-IV-45STQR	MINER CONSTANT CONTACT SIDE BEARERS
W11149	HOUSING TCC-IV-60LT
4500	MODEL 4500 PRELOAD PLUS CCSB
W11423	PAD ASSY (FOR TCC-IV-45)

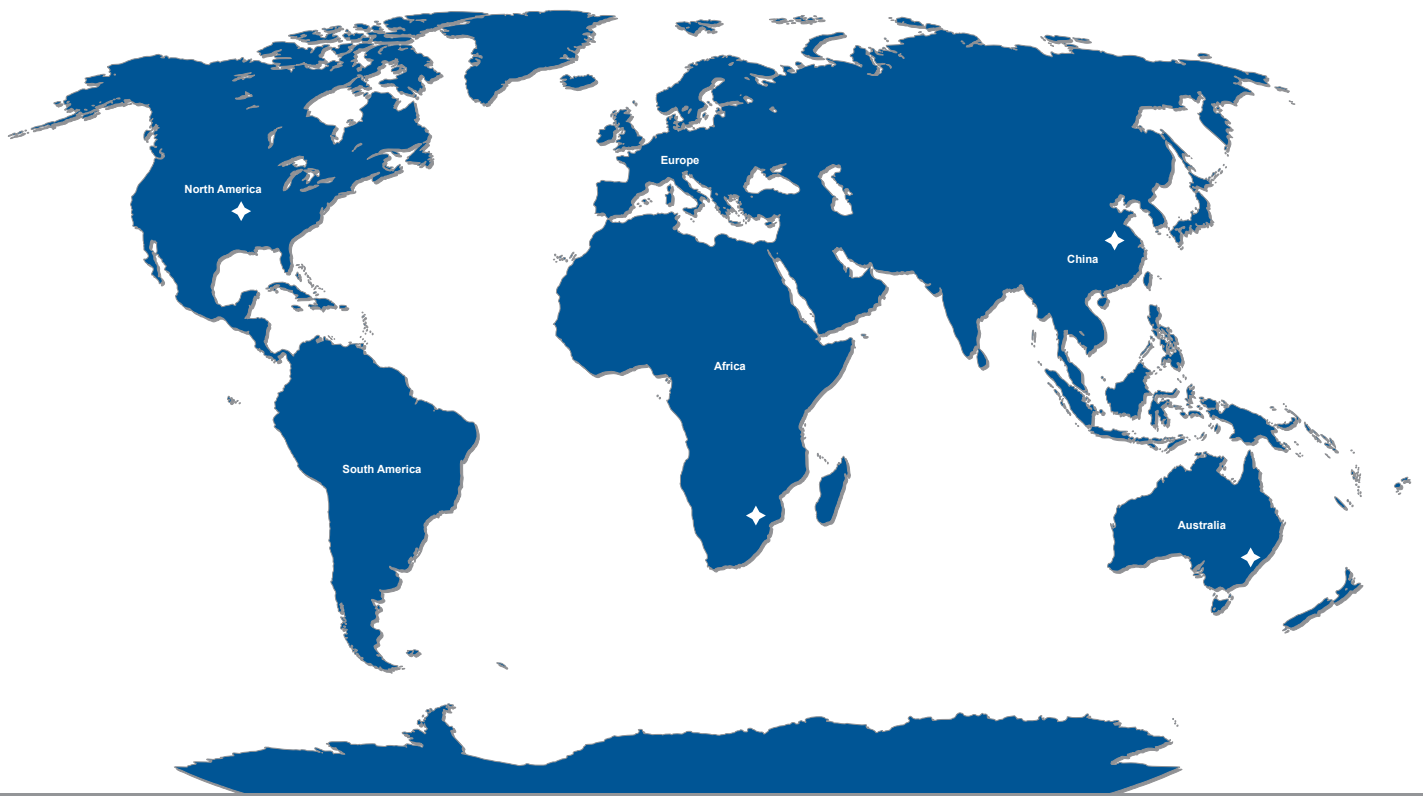
B2038	SIDE BEARER BRACKET
29129	SIDE BEARER HOUSING
W10157	SPRING INSERT SIDEBEARER TCC-111-60-ST #40236
W11398	TOP CAP (FOR TCC-IV)

## Level Crossing & Signal Equipment & De-Rails

38-2504-54 18	HIGH INTENSITY GATE ARM CW 1591 LED LIGHTS & WIRING
38-2504-64 28	HIGH INTENSITY GATE ARM CW LED LIGHTS
38-2504-38	BOOM GATE ARM AL/FG 11.2M
38-2504-20-8	GATE ARM AL/FG
38-2504-24	GATE ARM AL/FG 19-24 HIGH INTENSITY SHEETING
38-2504-32	GATE ARM AL/FG 25-32 HIGH INTENSITY SHEETING
38-2504-28	GATE ARM ALUMINIUM FIBREGLASS
1591-51	GATE LIGHT SET (3) SPECIAL GATE ARM
1590-50	GATE LIGHT SET 3-5/8 DIA XING CONTAINS 3 X TYPE 1590 LIGHTS
1591-50	GATE LIGHT SET 4-1/8 DIA XING CONTAINS 3 X TYPE 1591 LIGHTS
1597-50	GATE LIGHT SET LED BOOM ARM
3593-131-MI	GATE MECHANISM C/W MECH SUPPORT & CONDUIT ASSY
3590-131-BE	GATE MECHANISM C/W MECH.SUPPORT & CONDUIT ASSY.

2149A-111G	BASEMAST 5.5DIA. LEVEL CROSSING
2149-A-112-E	SPLIT BASE ASSY
3570-113	ARM COUNTERWEIGHT LH ALUMINIUM MODEL 10 CROSSING
3565-102	ARM COUNTERWEIGHT LH CAST IRON MODEL 10 SIGNALS
3570-112	ARM COUNTERWEIGHT RH ALUMINIUM MODEL 10 CROSSING
3565-103	ARM COUNTERWEIGHT RH CAST IRON MODEL 10 SIGNALS
38-0027-13	BOLT SHEAR PIVOT TYPE BREAKAWAY ADAPTOR
0333-CFR	C/BELL W/UNIVERSAL SOCKET DC SUIT 4 X 5
38-0027-600	PIVOT TYPE BREAKAWAY ADAPTOR FIBREGLASS/ALUM.GATE ARMS
38-0027-62-A	POST ASSY COMPLETE PIVOT TYPE BREAKAWAY ADAPTOR
HB DE-RAIL	SLIDING DERAIL LEFT & RIGHT
LPTS	PORTABLE DERAIL
EB DE-RAIL	HINGED DERAIL LEFT OR RIGHT
HRS-100	HI-RISE OPERATING STAND
HBXS	BI-DIRECTIONAL DERAIL





## Global Corporate Centre

20 McIntosh Drive, Mayfield West, NSW 2304 Australia  
T +61 2 4926 8200  
F +61 2 4926 8201  
E [bradken@bradken.com](mailto:bradken@bradken.com)

Visit [bradken.com](http://bradken.com) for your  
local representative.

## Regional Head Offices

### AFRICA

Unit G1 The Palisades  
39 Kelly Road  
Jet Park South Africa  
T +27 11 390 0100  
F +27 86 615 0876  
E [africa@bradken.com](mailto:africa@bradken.com)

### AMERICAS

Suite 647, 12200 NW Ambassador Drive  
Kansas City MO 64163 USA  
T +1 816 270 0700  
F +1 816 270 0799  
E [americas@bradken.com](mailto:americas@bradken.com)

### ASIA

No.120, XuHai Road South  
Economic Development Zone  
Xuzhou P.R. China 221131  
T + 86 516 8355 3958  
F + 86 516 8355 3959  
E [asia@bradken.com](mailto:asia@bradken.com)

### PACIFIC

20 McIntosh Drive,  
Mayfield West,  
NSW 2304 Australia  
T +61 2 4926 8200  
F +61 2 4926 8201  
E [pacific@bradken.com](mailto:pacific@bradken.com)

Our Innovation. Your Advantage.

