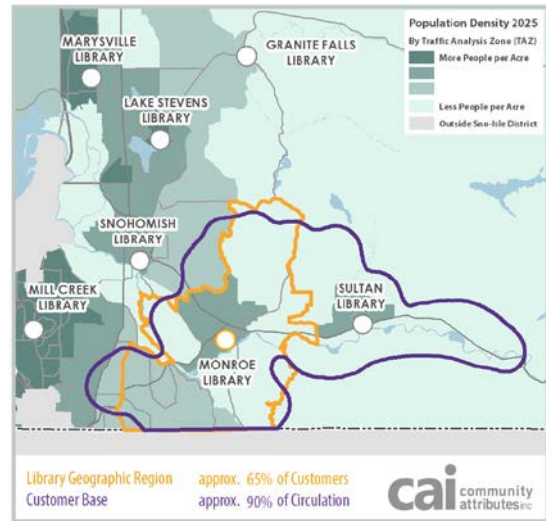


Monroe Community Library



Above, left: The Monroe Library is close to schools and other services. *Above right:* The orange line indicates area and percentage of customers associated with this library within the Library Geographic Region (see footnote below.) The purple line indicates area of addresses for customers who checked out the majority of items circulated by this library.

Recommendation

Maintain the current facility.

Reasoning

At 20,000 square feet, the Monroe Library was built in 2002 and is well-sized for the community. Projected population growth can be accommodated by the facility. Public comments collected for this plan indicate that the current facility meets the community's needs.

Current library

The Monroe Library was built in 2002 and serves a large geographic area. The Monroe Library has the largest collection of books, DVDs and other materials in Spanish in the library district. The library is located in proximity to multiple schools, parks, a senior center and City Hall.

- **Use:** In 2014, the library circulated a total of 291,476 materials and averaged 56 visitors per hour.
- **Access:** On average, current customers travel 5.2 miles to reach the Monroe Library. More than a third (36 percent) of Monroe's customers live over five miles from the Library.
- **Size:** The Monroe Library is 20,000 square feet. Based on population density, the library currently serves 1.8 people per square foot. With anticipated population growth, by 2025 the library would serve 2.1 people per square foot.

Growth impacts

By 2025, the area surrounding the Monroe Library is expected to grow 13 percent. Monroe is anticipated to have a population density of 11 people per 10 acres in 2025. The majority of population growth is expected to occur in the City of Monroe.

Community comments

Sno-Isle Libraries asked the public and community leaders how they use the Monroe Library, what they see as the most important spaces the library should have in the future and what changes to the library facility they recommend. Sno-Isle Libraries heard from Monroe customers who said:

- The current library facility adequately meets the needs of the community.
- Space for computers and a large collection of materials is important to the community.
- The library has a comfortable atmosphere, employs helpful staff and fosters a sense of community.

Sno-Isle Libraries also asked whether the community felt they needed a new or improved library . The majority of respondents (76.3%) say there is no need for changes or renovations to the current facility. A minority of respondents wanted to see renovations at the Monroe Library to add comfortable reading and quiet study areas. Many participants commented that they are happy with the Monroe Library.

By the numbers

Below is a snapshot of the data considered for the Monroe Library, including comparative numbers for the entire library district.

		Monroe	Library district range
Library use	2014 check-outs/square foot	15	11-87
	2014 program attendance	11,349	536-23,289
	2014 visits/hour library open	56	17-136
Library access	Average distance customers in 2014 traveled to the library (miles)	5.2	2.1-7.3
	Percent of 2014 customers living more than 5 miles away from the library	36%	8-58%
	Percent of population below 200% of the Poverty Line	20%	14-42%
Population growth	2013 City of Monroe population	17,724	---
	2015 Library Geographic Region* population	36,622	2,519 - 164,733
	2015 population/square foot of library	1.8	0.6-22.3
	2025 Library Geographic Region* population	41,383	2,620 - 182,853
	2025 population/square foot	2.1	0.7-24.7
	Population growth between 2015-2025	13%	2-30%
	2025 population density (people/10 acres)	11	0-84
Community input	Does your community need a new or improved library? Percentages based on 40 responses.		
	No	76.3%	
	Yes, renovate	21.1%	---
	Yes, build new	2.0%	---

**Sno-Isle Libraries used Census Block Groups to define the Library Geographic Region for Monroe. Census Block Groups are a geographical unit used by the United States Census Bureau. They are the smallest geographical unit for which the Bureau publishes Census data and generally contain between 600 and 3,000 people. Monroe's Library Geographic Region includes all Census Block Groups in the library district whose center points are closer to the Monroe Library than any other library in the library district. This defined area was used to assess library access and population growth.*