

RIT | Rochester Institute
of Technology

2019 Annual Security & Fire Safety Report







Gary Moxley

Director Public Safety
p. (585) 475.4515
e. gdmcps@rit.edu

Prior to joining RIT, I proudly served the Rochester community for over 20 years as a member of the Rochester Police Department, retiring as a Captain in October of 2017. I am a veteran of the United States Army and earned my Master's Degree in Criminal Justice from Keuka College in 2012.

Here in Public Safety, we are committed to providing the highest level of professional public safety services to foster a safe learning and working environment for our students, faculty, staff, alumni and visitors.

The information included in this report provides an overview of services, prevention strategies and crime statistics. Although reported crime at RIT is relatively low, it is important to remember that we are not immune from criminal activity. We work to prevent crime and resolve problems that affect our entire population. Public Safety uniformed officers patrol the campus around the clock, 24/7/365. Safety is our core responsibility.

Public Safety provides a wide variety of security services and prevention programs to the campus community. We encourage everyone to take responsibility for their safety by staying informed of these services and reporting suspicious activity. Although each individual is ultimately responsible for his or her own personal safety, learning and practicing basic safety precautions can enhance ones well-being. In short, we ask that if you see something, please say something.

I hope you find our Security Report to be a helpful resource. Please feel free to stop by our office located on the first floor of Grace Watson Hall. Or, you can contact me directly if you have any questions or concerns regarding security issues.

Thank you for taking the time to become better acquainted with our safety services, tips and procedures.



rit public safety



@ritpublicsafety

Public Safety Contact Information

p: (585) 475-2853
www.rit.edu/fa/publicsafety/

Mail:
Rochester Institute of Technology
Public Safety Department
Grace Watson Hall
61 Lomb Memorial Drive
Rochester, NY 14623-5603

Table of Contents

Public Safety Mission Statement	5
About Public Safety	6
Public Safety Services.....	7
How to Report a Crime	8
Safety Awareness Programs	9
Security Policies and Procedures	10
Online Services	11
Responsibility of the Student	12
Maintenance and Security of Facilities.....	12
Studying and Working Safely Overseas	13, 14
RIT Prohibited Conduct.....	15
Drug & Alcohol Laws and Policies.....	16
Handling of Bias-related and Sex Offenses	17
Sexual Harassment, Sexual Assault & Awareness . . .	17
Victims & Witness Resources	21
Emergency Preparedness and Response.....	22
Timely Warnings	25
Crime Definitions.....	27
Reported Offenses	32
Reported Offenses RIT Dubrovnik.....	33
Reported Offenses RIT Zagreb	34
Reported Offenses RIT Dubai.....	35
Public Safety Staff Members.....	36, 37
Fire Safety Report	39
Important Phone Numbers- Important Internet Links	47

RIT provides written notification to students and employees about existing internal and local resources regarding counseling, mental health, victim advocacy, legal assistance, visa and immigration assistance, student financial aid.



Here in Public Safety, we are committed to providing the highest level of professional public safety services to foster a safe learning and working environment for our students, faculty, staff, alumni and visitors.

Public Safety's Mission Statement

The mission of Rochester Institute of Technology's Public Safety Department is to work cooperatively with the diverse members of our University community to enhance the quality of life on our campus. Our ultimate goal is to deliver professional services and initiatives that provide a safe and pleasant community sensitive to the uniqueness of individuals and groups engaged in the learning process.

Public Safety's mission incorporates the following values:

Pride

We are proud of our chosen profession in public safety and we remain directly accountable by those we have pledged to serve so diligently.

Respect

To ensure that everyone receives comprehensive and professional service in a manner that respects the dignity of all persons.

Integrity

We recognize integrity as the hallmark of a public safety professional and pledge to maintain the highest professional ethical standards as set forth in University policies and procedures.

Diversity

We value the rich diversity abundant in our campus communities and view diversity education opportunities and initiatives as essential core organization development components.

Empowerment

We pledge to develop and empower our members with the authority to use their individual and collective knowledge, skills, and resources to resolve the needs of our University community.



Public Safety Overview

Rochester Institute of Technology is a privately endowed, coeducational Institute with more than 18,900 students and 4,000 faculty and staff. RIT is also the proud home of the National Technical Institute for the Deaf, which enrolls more than 1,100 deaf and hard of hearing students.

RIT grants certificates, associate, baccalaureate, masters, and doctoral degrees and has the nation's only doctoral program in Imaging Science and Microsystems Engineering. Its Cooperative Education Program is the fourth oldest and one of the largest in the world. The 1,300-acre modern campus is located in Henrietta, NY, a suburb of Rochester, NY, and minutes away from the Greater Rochester International Airport. The community's concerns for safety is a focus and the Public Safety Department utilizes a number of measures to ensure that all RIT community members and property are protected as much as possible.

About Public Safety

The Department of Public Safety is staffed with 40 full-time, uniformed, registered New York State Public Safety Officers. All Officers are trained in emergency medical procedures, CPR, automated external defibrillators, American Sign Language, and crisis intervention. A complete background investigation, fingerprint and records check is conducted for all Public Safety Officers. In addition to meeting all training requirements as outlined in the New York State Guard Act, Public Safety Officers also receive over 13 weeks of classroom and field training.

Public Safety Authority

Public Safety Officers are proprietary security officers of the University and receive their authority to maintain public order on the campus from the New York Education Law. Officers do not have the authority to make

arrests on RIT owned or controlled property. This requires all colleges and universities in New York to adopt and file with the regents and commissioner of education rules and regulations for the maintenance of public order on college campuses and other college property. In protecting the academic interests of the University and ensuring an orderly environment for the promotion of educational progress, Public Safety is empowered to enforce institutional regulations and policy. Public Safety coordinates all requests for services from all law enforcement agencies, fire departments, and other emergency medical and environmental response teams to campus. They conduct foot, mobile, and bike patrols of campus residence halls, apartments, and academic buildings 24 hours a day, with seven patrol vehicles, one ATV and one bicycle. The Public Safety Department is located on the first floor of Grace Watson Hall.



Crime Log

Each year, RIT community members are advised about security policies and procedures in RIT's Safety and Security Report. Included in the report is information on how to report a crime, available safety awareness programs, RIT drug and alcohol policies, and reported campus crime statistics. Crime alerts are electronically distributed on campus when serious crimes are reported. Our Community is welcome to view the crime log located in the Public Safety office. The Safety and Security report is available on Public Safety's website at <https://www.rit.edu/fa/publicsafety/sites/rit.edu/fa/publicsafety/files/2019AnnualSecurityReport.pdf>

Local Law Enforcement

The Public Safety Department maintains a close working relationship with area law enforcement agencies, including the Monroe County Sheriff's Department, the New York State Police, Rochester Police Department, and various other federal, state, and local agencies. Regular informational meetings are held with representatives from these agencies, as well as other area campus security departments to discuss local trends and formulate coordinated preventive programs and efforts.

Public Safety investigates violations of criminal law and the Student Code of Conduct. Alleged violations of the Student Code of Conduct are generally referred to the Student Conduct Office. Criminal prosecutions of incidents that occur on campus, or elsewhere in Monroe County, are coordinated by the Monroe County District Attorney's Office.



Public Safety Services & Resources

- Lost items online reporting: www.rit.edu/fa/publicsafety/safety/lostitems.html
- Blue light courtesy call boxes located campus-wide
- Public Safety Escort Services (driving and walking)
- Confidential Tip Line: www.rit.edu/fa/publicsafety/
- Safety Voice: www.rit.edu/fa/publicsafety/forms/safetyvoice
- New York State registry and the Sex Offender Registration Act (SORA): www.criminaljustice.ny.gov/nsor/
- Tiger Safe mobile app: apparmor.com/clients/rit.edu/
- Crime prevention awareness programs and information displays
- Lost and found
- Motorist assists, jump starts and lock-outs
- Residential lock-outs
- Emergency notifications
- Emergency first aid
- Security surveys
- Crisis intervention
- Check on the welfare of students
- Victim/Witness advocacy
- National Incident Management
- System (NIMS) Compliant

Maintenance of Public Order On Campus

The RIT Board of Trustees has delegated authority in security matters to Public Safety, and on May 13, 1996 ratified a delegation stating that Public Safety is empowered and directed to maintain public order on campus for the general safety and protection of RIT students, employees and their guests and such authority includes:

- Enforcement and administration of RIT rules and regulations concerning traffic on campus
- Enforcement of RIT rules and regulations concerning behavior on campus
- The investigation and reporting of suspected violations of RIT rules and regulations to the designated RIT disciplinary authority
- Issuance and enforcement of persona non-grata (banned from campus) orders pursuant to established policy
- Response to and assistance in campus emergencies and other related activities

How To Report A Crime

RIT community members are encouraged to accurately and promptly report all crimes and safety related incidents to the Public Safety Department by calling (585) 475-3333 from an off-campus telephone, 5-3333 from an on-campus telephone, download the TigerSafe mobile app, or text (585) 205-8333. Crimes should be reported to the Public Safety Department for the purpose of sending timely warning notices and annual statistical disclosure. Public Safety Officers will provide information and resources on reporting a crime to the appropriate law enforcement agency when requested by the victim. The New York State Department of Motor Vehicles has authorized Public Safety to file motor vehicle reports.

Copies of these accident reports may be obtained from Public Safety by individuals involved in an accident. Incidents involving student records are requested through the Office of Student Conduct.

Dispatchers are available 24 hours a day to answer your calls. Public Safety will take the required action, whether dispatching an officer or asking the victim to report to our main office in Grace Watson Hall. There are several on campus direct dial emergency telephones and free on-campus public telephones located in lobbies and public areas of many buildings.

Additional information obtained via the investigation will also be forwarded to the Office of Student Conduct and Conflict Resolution as noted in student policies D. 18 and D. 19. If assistance is needed from the Monroe County Sheriff's Office, Public Safety will contact 911. RIT does have a formal memorandum

of understanding with the Sheriff's Office regarding the investigation of criminal incidents; all crime victims are provided Sheriff's Office services as specified in the student's rights.

Fire Arms & Dangerous Weapons

Firearms, dangerous weapons of any kind, fireworks, or explosive devices are not permitted on the RIT campuses. Possession of any of the above could result in arrest and university judicial sanction. Confiscated illegal items are turned over to appropriate law enforcement agencies.



Confidential Resources

RIT offers several options for community members to seek assistance without having to report to Public Safety. Even RIT Offices and employees who cannot guarantee confidentiality will maintain your privacy to the greatest extent possible. The information you provide to a nonconfidential resource will be relayed only as necessary for the Title IX Coordinator to investigate and/or seek resolution. If an individual discloses information during a public awareness event, a protest, during a class project, or advocacy event, RIT is not obligated to investigate based on the public disclosure. RIT may however use the information provided in an effort to further educate about preventive efforts.

The confidential offices are:

- The Center for Women and Gender (a confidential service office for students, faculty and staff)
- The Student Health Center (health services for students only)
- The Counseling Center (counseling services for students only)
- NTID Counseling and Academic Advising Services (center for students only)
- Center for Religious Life (pastoral services for all community members)
- The Ombuds Office (center for all faculty, staff and students)

Safety Awareness Policies & Procedures

Missing Student Notification Policy & Procedures

If an individual believes that a resident RIT student is missing, RIT's Office of Public Safety should be contacted promptly either by telephone at (585) 475-3333, by instant messaging at ritpublicsafety, by text at (585) 205-8333, or in person at the emergency dispatch center which is located on the first floor of Grace Watson Hall, and is open 24 hours per day, 365 days per year. Any report of a missing student, from whatever source, must be referred to RIT Public Safety immediately.

Each resident RIT student has the option to register a confidential contact person or persons who will be notified by on-campus authorities such as RIT's Public Safety Department and Division of Student Affairs, or by local law enforcement officials within 24 hours of the determination that the student is missing. This confidential contact person may be a person other than one who is registered as an emergency contact in RIT's student information system. The individual designated by the RIT student will be accessible only to authorized campus officials, and to law enforcement. To register a confidential contact person, log into myhousing.rit.edu using your DCE login, and enter personal information including a field for Missing Person notification and click to save. The contact information will be registered confidentially.

If a missing student is under 18 years of age, and not an emancipated individual, the University will notify a custodial parent or guardian of the missing student no later than 24 hours after the determination that the student is missing.

RIT Public Safety will contact local police and other law enforcement

agencies no later than 24 hours after the University determines that the student is missing.

Notification Procedures

When a resident RIT student is reported missing, RIT Public Safety will:

- initiate an investigation immediately upon receipt of a report of a missing person; and
- make a determination as to the status of the missing student.

A missing person checklist is used so that the investigation follows a standard path relative to engaging appropriate resources and technologies both on and off campus. In addition, several campus departments and centers are engaged during the investigation, including Student Affairs, Academic Affairs, Residence Life, Dining Services, and Information & Technology Services to assist RIT Public Safety and law enforcement.

Upon determining that a student is missing, RIT Public Safety or the division of Student Affairs will do the following within 24 hours:

- notify the missing student's designated confidential contact person(s) that the student is missing;
- notify the student's custodial parent or guardian and any other designated contact person that the student is missing if the missing student is under the age of 18 and not an emancipated individual; and
- notify local police or other appropriate law enforcement agencies that the student is missing.

Security Awareness Programs

Public Safety offers a variety of educational and prevention programs during each academic

quarter. Information on safety and security related issues is regularly provided to students and employees through incident notifications, quarterly safety newsletters, and brochures. Safety and security information is also communicated over the campus-wide electronic mail system and via Message Center notifications. These programs are designed to inform students and employees about campus security procedures and practices as well as encourage students and employees to be responsible for their own security and the security of others. The current programs offered throughout the academic year are: Lock-It, Public Safety & Social Media, Armed Intruder Awareness, Cash Handling Procedures, Fire Safety, Residence Hall Safety, RIT Apartment Safety, Community Knowledge, Weather Safety Procedures, Public Safety & RIT Resources, Early Intervention, and Public Safety: Behind the Scenes. In addition, the following programs are offered on a bi-weekly basis and announced via the Center for Professional Development, e-mail, social media or upon request: Be an Active Bystander, RIT Vehicle Safety, Reporting a Crime, Situational Awareness, Knowing Your Workplace and Co-Workers; Alarms and Lenel Importance.



Security Policies and Procedures

Blue Light Call Boxes

Highly visible blue light call boxes, located campus-wide, are not just for reporting emergencies. If you need a vehicle jump start, an escort to your car, or are locked out, press the large red button and your call will automatically be connected to the Public Safety Dispatcher. After the button is pushed a small red light will appear which means your call is being dialed to Public Safety. The light turns green when your call is answered. The dispatcher knows your exact location and if you cannot communicate for any reason, an Officer quickly responds to assist you.



Academic and Recreational Facilities

All campus roadways, parking lots, and buildings are regularly patrolled by Public Safety Officers, and/or contract officers. All vehicles operated on campus must be registered with Parking & Transportation Services.

Several campus buildings are equipped with intrusion alarms and access control systems which are monitored by Public Safety's 24 hour central monitoring station. Communication Officers monitor all alarms and incoming telephone emergencies and coordinate the response of all emergency personnel and equipment to campus. Students, faculty and staff at RIT have access

to academic, recreational, and administrative facilities on campus during normal hours of business and designated hours on weekends. Deans, directors, and department heads may submit After-Hours Authorization Forms to Public Safety that allow individuals access beyond normal building hours. This process is initiated through academic department heads and the information is then forwarded to Public Safety.

Residential Areas

Residence Life staff members are trained and instructed in the enforcement of residence hall

policies. Doors and elevators leading to residential floors are locked 24 hours a day. Student rooms in the residence halls are equipped with deadbolt locks and windows with locking devices. Students are provided with individual keys to their rooms and swipe card access to the exterior doors of the residence hall in which they live.

Facilities and landscaping are maintained in a manner that minimizes hazardous conditions. Public Safety Officers regularly patrol the campus and report malfunctioning lights and unsafe conditions to Facilities Management for correction.

Security Online Services

Tigersafe App

The TigerSafe app allows campus users to connect with RIT Public Safety officers, turning any smartphone into a virtual blue light security phone. The mobile app adds onto traditional blue light offerings by featuring voice and text capabilities, GPS location tracking and reporting services.

The app is now available to download for free on Android and Apple iOS devices. RIT community members can sign into the app using their university user name – no separate account needs to be created. The app allows users to inform, report and assist on campus through the three main tabs:

INFORM allows access to Public Safety's general and emergency response phone numbers, other important RIT phone numbers and safety tips. This tab can be used by anyone who downloads the app, including parents, and does not require an RIT account.

REPORT allows users to report the need for vehicle jump starts, noise complaints, escorts and lockouts without having to call Public Safety. Reports show dispatchers the user's GPS location.

ASSIST offers a virtual blue light button that a user can press in the event that they feel unsafe on campus. This reports the user's location, contact details and information to Public Safety communications officers. After pressing the button, Public Safety is dialed to continue the conversation via telephone or text message and aid in response.

Online Services

Online services aimed at assisting all RIT members are available on the Public Safety website (www.rit.edu/fa/publicsafety/). The lost items reporting system enables an RIT member to report lost items to the Public Safety office without having to contact the on-duty dispatcher or visit the office. The report is reviewed on a daily basis and compared against all property secured in the Public Safety office. The report is maintained for a period of 30 days and you will be contacted to claim the property if it is turned into the office. The Confidential Tipline was created to provide all RIT members with the ability to report conditions which may be considered suspicious or endangering behavior. All reports are considered confidential and

you will only be contacted if you provide your contact information. We encourage all RIT members to report any immediate condition which could affect the safety or security of the RIT campus through the Public Safety dispatcher. Safety Voice is an online forum available to all RIT community members designed to report safety or security related conditions observed on campus (i.e. burned out walkway or parking lot light). The Public Safety Department encourages community members to report safety related issues in a timely manner so that they are appropriately addressed.

Additional online reporting options to help keep you and RIT safe are:

- Tigers Care: Concerned About a Student link: www.rit.edu/student-affairs/tigerscare/#all-hours
- Title IX Reporting Link: https://cm.maxient.com/reporting-form.php?RochesterInstofTech&layout_id=25
- TigerSafe App: <https://apparmor.com/clients/rit.edu/>

The Tigersafe app allows campus users to connect with RIT Public Safety officers, turning any smartphone into a virtual blue light security phone



Cyber Safety

Be aware that most users online will remain anonymous and you should treat unknown users as strangers.

- Do not give out personal contact information including address, phone number(s), class schedules, clubs/groups, etc.
- If you're being harassed online, terminate all contact with the user and report it to Public Safety.
- Online social website users (Instagram, Facebook, etc.) should restrict their profiles to known friends.
- Cyber stalking is real and your personal information should be as secure as your residence or vehicle.
- The fact that "cyber stalking" does not involve physical contact may lead to the misconception that it is less dangerous than "real life" stalking.

Responsibility of the Student/ Maintenance and Security

Maintenance and Security of Campus Facilities

Campus lighting is a priority in RIT's total commitment to a safe campus environment. Parking lots, pedestrian walkways, building interiors and exteriors are patrolled by Public Safety Officers. All lighting problems are immediately reported to Facilities Management Services.

Comprehensive monthly safety and security inspections of all campus buildings are conducted by Public Safety. Public Safety staff report all other safety hazards and security related problems to appropriate departments for immediate correction.

RIT's Facilities Management Services works closely with Public Safety to ensure that RIT's buildings and grounds are as safe as possible from

hazards or security risks. Potential safety and security hazards, such as broken doors, windows and locks are repaired promptly. Campus landscaping is also maintained with safety in mind as shrubbery and trees are trimmed regularly.

Public Safety has significant input into the design of all campus security alarm systems. Specially trained crime prevention staff review all new building plans and major renovation projects to ensure security related issues are properly addressed.

Fire prevention education is conducted by RIT Environmental Health and Safety (EH&S) personnel. Specially trained and certified staff design and coordinate the installation of all fire safety systems on campus for compliance with fire and building codes. EH&S

reviews all workers compensation claims, as well as its work with a variety of campus groups on issues such as the Right-to-Know Law, Occupational Safety and Health Administration (OSHA) compliance standards, back safety and ergonomically safe work areas.

Incidents of theft from unlocked rooms or unattended property are crimes of opportunity and can easily be avoided. One hundred percent of reported thefts and burglaries in residential facilities in 2015 occurred in unlocked rooms. Whether sleeping or away, students should always lock their door to enhance their personal safety and protect personal property. Residents can call Public Safety at (585) 475-2853 to schedule a crime prevention program in your residence hall or apartment.

The Student's Responsibility

Individual responsibility is an important component of personal safety. Students must assume responsibility for their own safety and the security of their belongings by taking simple, common sense precautions.

- Although the RIT campus is well lighted, everyone is encouraged to use the Escort Services, especially at night.
- Use the blue light courtesy call boxes or dial (585) 475-2853.
- Residence hall rooms and apartment doors and windows

should be locked at all times. Even the best locks won't work if they aren't used.

- Students should not carry large amounts of money or valuable property and should not leave their belongings unattended, even for a few seconds.
- Valuables such as stereos, camera equipment, computers, DVDs and televisions, should be marked with engravers.
- Students should park in designated areas and keep their vehicles locked at all times. Valuables should be locked out of sight or in the student's residence.
- When going to your vehicle have your keys ready and always check your back-seat area before getting in.
- While driving, always keep your doors locked and avoid traveling

alone in areas of the community you are not familiar with.

- Students should consider personal property insurance coverage.
- Walking or jogging routes should be planned in advance. Stay away from dark areas, avoid shortcuts and go with a friend.
- Student should memorize the Public Safety telephone number (585) 475-3333 or text line (585) 205-8333 and immediately report and any suspicious individuals, activity, or incidents.
- The Parking & Transportation Services Office provides campus-wide shuttle services to approximately 12,000 students weekly and accessible van service for students with mobility needs. Vans are also available for RIT groups, clubs, and organizations.

International Travel Safety and Security Resources

We take safety seriously for students, faculty, and staff that travel internationally with RIT. General tips are below for maintaining safety abroad. For more in-depth health, safety, and travel resources, refer to the “Preparing to Go” section of the RIT Study Abroad website: <https://www.rit.edu/academicaffairs/global/overview>

RIT Protocol

Emergency Planning:

RIT has developed an International Traveler Emergency Response Plan that outlines steps to take in case of an emergency abroad. It can be found here: <https://www.rit.edu/academicaffairs/global/sites/rit.edu/academicaffairs/global/files/images/Emergency%20Response%20Plan%20Risk%20Mgt.pdf>

U.S. Citizens should enroll in the Smart Traveler Enrollment Program (STEP) to receive important information about your destination and help the U.S. Embassy as well as your friends and family get in touch with you in the case of an emergency. To enroll visit step.state.gov/STEP/Pages/Common/

Citizenship.aspx

Refer to Travel.State.Gov for travel advisories. <https://travel.state.gov/content/travel.html>

Names and contact information should be forwarded to the Emergency Dispatcher located in Grace Watson Hall. The Emergency Dispatch Center is open 24 hours a day, 7 days a week, and the telephone number is (585) 475-3333 or text (585) 205-8333.

Give your family a complete itinerary, and copies of important documents like your passport, bank, and credit cards.

Prepare a wallet card with your blood type, known allergies, required medications, insurance company, and emergency contact information.

Fire Safety Abroad:

Keep in mind that other countries do not have the same regulations regarding fire safety so your accommodations may not have sprinkler systems. Be aware of your environment and consider evacuation routes.

Transportation:

Transportation hubs like train stations can be hot spots for petty theft. Stay aware of your surroundings, keep your personal items with you at all times, and look out for distractions tactics.

Take legitimate sources of location transportation like public transportation, marked taxis, or shared rides.

- There is safety in numbers, so travel with a buddy and avoid areas of higher crime.

Local Political Climate:

- Keep abreast of current events.
- Avoid protests, demonstrations, or large crowds.

RIT GLOBAL
JUST GO!



Money:

- Keep your cash and valuables locked away.
- If you must carry cash, store it in multiple locations on your person.
- Use bank-sponsored ATMs in well-lit locations whenever possible.

Health:

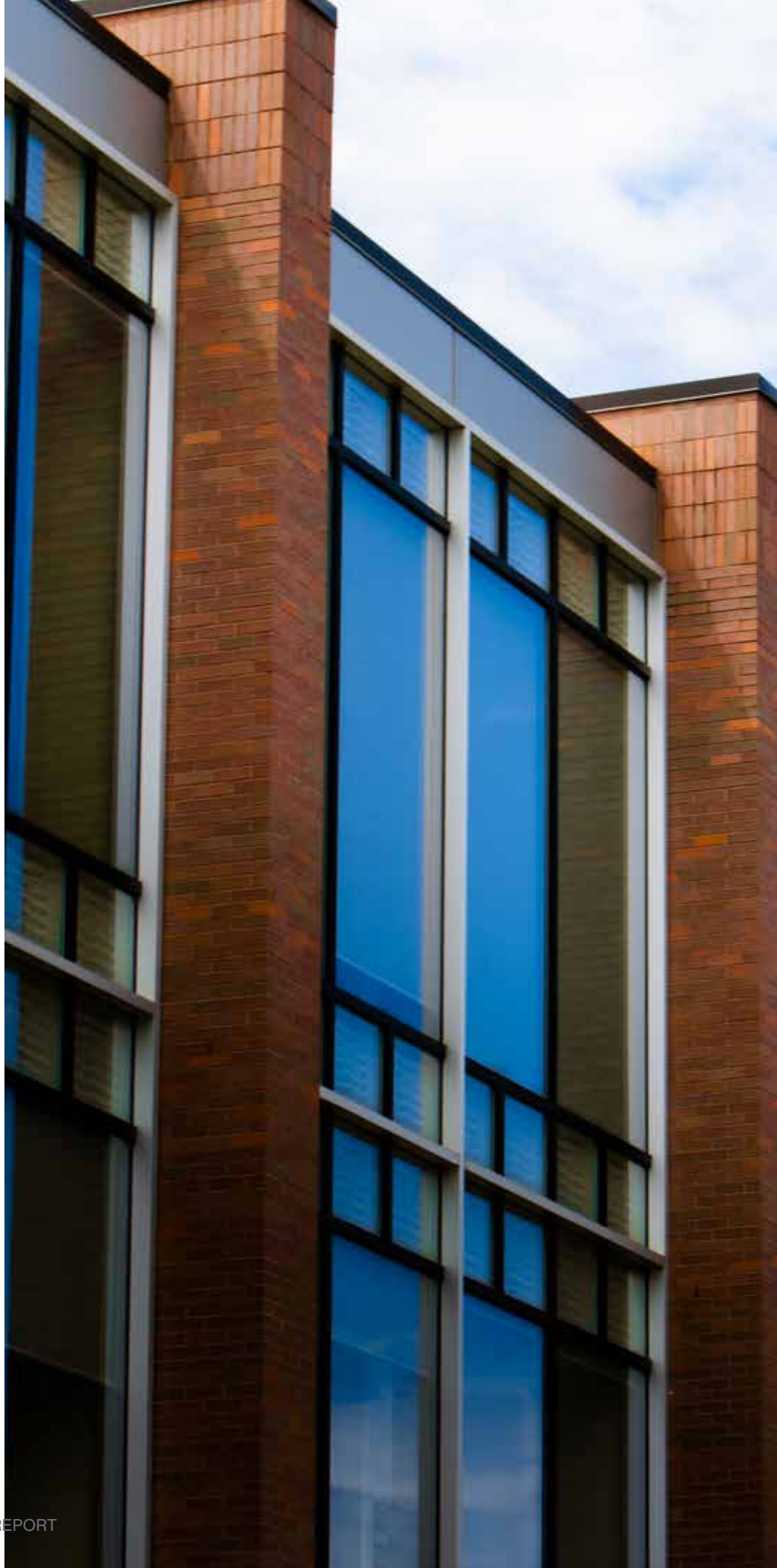
Check the CDC website for required and/or recommendation vaccinations for your destination.
<https://wwwnc.cdc.gov/travel>

- Take precautions against potential food and water contamination.
- Carry vital medications on your person at all times.
- Pack enough medication for your entire trip, and store it in your hand luggage.
- Check to make sure that your medication is legal at your destination and if not, make plans for an alternative.
- If you are traveling with RIT on a study abroad program, you are covered by medical and emergency evacuation insurance. Otherwise, make sure that you have the appropriate insurance coverage.
- Develop strategies to manage your mental and physical health abroad.

Communication:

Establish a communication plan with your family before you depart.

- Gather and store the following phone numbers:
- Local Emergency Number
- Nearest Home Country Embassy/ Consulate
- Accommodations
- Airlines
- RIT Public Safety: +1(585) 475-2853
- RIT Study Abroad: +1(585) 475-4466



RIT Prohibited Conduct

RIT's Policy Prohibiting Discrimination and Harassment

RIT will not discriminate in terms and conditions of employment, admission, and participation in programs or residential life. It prohibits discrimination and harassment on campus, or at any RIT activities off campus, by its administrators, faculty, staff, students and student organizations, and external organizations and individuals in their operations with RIT.

RIT defines harassment as unwelcome physical contact, conduct, or communication that has the purpose or effect of:

Unreasonably interfering with an employee's or student's work, academic activities, or residential life at RIT or participation in RIT sponsored programs or events.

Creating an intimidating, hostile, or abusive environment for an employee or student at RIT or in RIT sponsored programs or events, as determined by RIT's process for resolution.

RIT is committed to an environment that encourages, promotes, and protects free inquiry and free expression. Members of the RIT community have the right to hold, express vigorously, defend and

openly promote their ideas and opinions. The RIT policy prohibiting discrimination and harassment is not intended to restrict freedom of speech or any form of artistic or visual expression.

The Policy Prohibiting Discrimination and Harassment is inclusive of Title IX of the Education Amendments of 1972, which is a federal law that prohibits discrimination on the basis of sex under any education program or activity receiving federal financial assistance.

The Title IX Coordinator has overall responsibility for the university's institutional compliance with Title IX. Any person with a concern about the university's handling of a particular matter should contact:

Stacy DeRooy, Title IX Coordinator, at 585-475-7158 or Stacy.DeRooy@rit.edu

The U.S. Department of Education, Office for Civil Rights is a federal agency responsible for ensuring compliance with Title IX. OCR may be contacted at 400 Maryland Avenue, SW, Washington, DC 20202-1100, (800) 421-3481.

The entire RIT Policy Prohibiting Discrimination and Harassment can be found at the following link: www.rit.edu/academicaffairs/policiesmanual/c060



Drug and Alcohol Laws

New York State and Local Alcohol Laws

It is against New York State law to sell, deliver, or give away alcoholic beverages, or to knowingly allow alcoholic beverages to be sold, delivered, or given away, to anyone under the age of 21, to anyone actually intoxicated or seemingly under the influence of alcohol, or to anyone known to have a drinking problem. It is also illegal to purchase alcoholic beverages for anyone under the age of 21 or to use a falsified identification or someone else's identification for the purpose of purchasing alcoholic beverages.

New York State has very strict laws about driving while intoxicated. A driver of any age who is intoxicated and causes another's death in an accident may be charged with vehicular manslaughter in the second degree and can be sentenced up to a maximum of seven years in

prison. Injured persons also have a right of action against the person who caused or contributed to such intoxication and have the right to recover damages.

RIT Drug and Alcohol Policies

RIT drug and alcohol policies comply with all federal, state and local laws that prohibit the possession, use, sale, or distribution of illicit drugs and/or alcohol by students or employees on any campus property or as any part of any RIT sponsored activity. The RIT Student Rights and Responsibilities Handbook is distributed to each student annually and contains the complete Alcohol and Other Drug Policy www.rit.edu/academicaffairs/policiesmanual/d181. The Student Code of Conduct states that students are held responsible for their behavior even though they may be impaired due to alcohol or other drugs. The Division of Student

Affairs coordinates all drug and alcohol educational programming.

RIT has a wellness team dedicated to education regarding the use of alcohol and other drugs. WADE (Wellness Alcohol Drug Education) at RIT is a committee comprised of students and staff who bring large scale programs as well as smaller events to campus. RIT participated in an October National Collegiate Alcohol Awareness Week by hosting a Safe Halloween Event, an event called SHIrTFACED (a t-shirt tabling event) and Wellness Wednesday with BAC-what did you blow? In addition, a Safe Patty's Day program with giveaways and information regarding safe partying took place in March. A late night alternative program called Dance in The Dark includes an activity where students learn about the quantity of alcohol in standardized drink sizes.



Handling of Bias Related Incidents



Stacy DeRooy

Director of Title IX &
Clery Compliance
Title IX Coordinator

I take great pride in RIT's compliance efforts related to Title IX and the Clery Act. Please do not hesitate to contact me directly if you have any questions regarding the material in this year's Security Report. Thank you in advance for taking a look at all of the information detailed in the report.

Contact Information

p: (585) 475-7158
e: Stacy.DeRooy@rit.edu
mail: Rochester Institute of Technology
Eastman Hall, Room 6040
115 Lomb Memorial Drive
Rochester, NY 14623-5608

Under the New York State Hate Crimes Prevention Act of 2000, a bias-related crime is committed when a person commits a specified offense such as murder, assault, kidnapping, arson, vandalism, or other crimes against an individual because of his or her Race, Religion, Ethnicity, National Origin, Gender, Sexual Orientation, Disability, or Gender Identity. The new law helps reinforce the message that hate crimes will not be tolerated.

This law also helps ensure that college students are informed about bias crimes and RIT policies and procedures address these offenses. Circumstances of reported bias-related incidents at RIT include verbal and written harassment directed against an individual. Public Safety vigorously and thoroughly investigates these offenses. Each case involving student misconduct is forwarded to Student Conduct and Conflict Resolution for adjudication. Victims are routinely offered to request the Monroe County Sheriffs' Office to pursue criminal charges in local courts, and the Institute fully cooperates with law enforcement and other agencies in the enforcement of criminal law on campus. Sanctions against perpetrators may include, but are not limited to, disciplinary probation, suspension, expulsion, termination of employment, criminal prosecution, and civil prosecution. In all cases, the medical and psychological needs of the victim are the top priority, and professionally trained RIT Counselors are available 24/7 for anyone who has been victimized. The RIT Counseling Center is located on the second floor of the August Center and appointments can be made by calling (585) 475-2261. For assistance after hours, weekends, and holidays call (855) 436-1245.

Handling of Sexual Assaults, Sexual Harassment, Dating or Domestic Violence and Stalking Incidents

Rochester Institute of Technology does not discriminate on the basis of sex in its educational programs. Sexual harassment and sexual violence are types of sex discrimination. Other acts can also be forms of sex-based discrimination and are also prohibited whether sexually based or not and include dating violence, domestic violence, and stalking. As a result, RIT issues this statement of policy to inform the community of our comprehensive plan addressing sexual misconduct, educational programs, and procedures that address sexual assault, domestic violence, dating violence, and stalking, whether the incident occurs on or off campus and when it is reported to a University official. In this context, RIT prohibits the offenses of domestic violence, dating violence, sexual assault and stalking and reaffirms its commitment to maintain a campus environment emphasizing the dignity and worth of all members of the university community.

For a complete copy of the RIT policy governing sexual misconduct visit: www.rit.edu/academicaaffairs/policiesmanual/d190-interim-policy-student-gender-based-and-sexual-misconduct-policy-title-ix

What Is Stalking?

According to the National Center for Victims of Crime, 15% of women and 6% of men will have experienced stalking at some point in their lifetime. Stalking can be simply defined as a course of conduct directed at a person designed to cause a reasonable person to feel fear. The RIT Student Code of Conduct defines stalking as "a person engages in a course

of conduct directed to a specific individual that is likely to cause such individual to have a reasonable fear of harm to his or her physical or emotional health, safety or property. Such conduct may include, but is not limited to: repeatedly engaging in unwanted contact or communication (including but not limited to, face-to-face communication, telephone calls or messages, electronic mail, written letters, gifts, or threatening or obscene gestures); surveillance; followings; trespassing; or vandalism". The National College Women Victimization study in 2000 reported that 83% of all stalking incidents were not reported to campus law enforcement authorities and 80% of the victims knew or had seen their stalker before. Three of the ten victims surveyed reported emotional or physical injuries and 3% sought some type of counseling. In most instances immediate action taken by the victim will result in the stalking behavior immediately ceasing.

Documentation of the incident including dates and times, statements, emails/notes/IM's/etc., witness copies of photographs, and audio recordings can be helpful in a future proceeding with the office of Student Conduct and in criminal courts. Public Safety will discuss all options with a victim, including investigating and reporting options both on and off campus, and take immediate steps to enhance the safety of the victim. Additional campus resources include the RIT Women's Center, CARES Program, the Office of Student Conduct, and the RIT Human Resources Department.

Primary And Ongoing Prevention And Awareness For Sexual Assault, Dating Violence, Domestic Violence, Stalking And Bystander Education

RIT engages in comprehensive,

intentional and integrated programming, initiatives, strategies and campaigns intended to end dating violence, domestic violence, sexual assault and stalking. All Incoming students participate in the Campus Clarity program called Think About It. Students receive information related to bystander, sexual misconduct prevention and awareness, healthy relationships, and communication strategies during Orientation Programming. All student leaders such as Resident Advisors and Orientation Leaders receive training on their responsibilities as Responsible Employees. All new employees receive Harassment and Discrimination and Title IX education. Student Athletes, Graduate Students, members of the Greek community, Air Force and ARMY ROTC, International Students and NTID are identified populations of students who receive custom training for awareness, bystander and prevention. Tigers Care, an initiative out of Student Affairs, supports a campus wide Active Bystander Campaign. The Center for Women and Gender, the Q Center, Student Affairs Wellness teams and the Title IX Office partner to provide ongoing education, awareness and programs throughout the year. Examples include, but are not limited to, participation in Sex Ed Boot Camp offered in the fall featuring information about consent for all students; Sexual Assault Awareness month in April; Domestic Violence Awareness month in October; Sexy Bingo; programming for LGBTQIA+ and Deaf and Hard of Hearing Students. Educators from RESTORE of Western NY, Bivona Child Advocacy Center and Willow provide information to our students, faculty and staff related to support for victims of sexual assault, stalking, dating and domestic violence. Social Media is used by all collaborating departments to present information to the RIT community regarding programs, current events, prevention

strategies and awareness.

Procedures For Reporting a Complaint

RIT has procedures in place that serve to be sensitive to those who report sexual assault, domestic violence, dating violence, and stalking, including informing individuals about their right to file criminal charges as well as the availability of counseling, health, mental health, victim advocacy, legal assistance, visa and immigration assistance and other services on and/or off campus, as well as additional remedies to prevent contact between a complainant and an accused party, such as housing, academic, transportation and working accommodations, if reasonably available. RIT will make such accommodations, if the complainant requests them and if they are reasonably available, regardless of whether the complainant chooses to report the crime to Public Safety or local law enforcement.

After an incident of sexual assault and/or domestic violence, the complainant should consider seeking medical attention as soon as possible. In New York evidence may be collected even if you choose not to make a report to law enforcement. It is important that a complainant of sexual assault not bathe, douche, smoke, change clothing or clean the bed/linen/area where they were assaulted, if the offense occurred within the past 96 hours, so that evidence may be preserved. This may assist in proving that the alleged criminal offense occurred or is occurring or may be helpful in obtaining a protection order. In circumstances of sexual assault, if complainants do not opt for forensic evidence collection, health care providers can still treat injuries and take steps to address concerns of pregnancy and/or sexually transmitted disease. Complainants of sexual assault, domestic violence,

stalking, and dating violence are encouraged to also preserve evidence by saving text messages, instant messages, social networking pages, other communications, and keeping pictures, logs or other copies of documents, if they have any, that would be useful to the RIT conduct process, investigators or police. Although RIT strongly encourages all members of its community to report violations of this policy to law enforcement, it is the complainant's choice whether or not to make such a report and complainants have the right to decline involvement with the police. RIT will assist any complainant with notifying local police if they so desire. The Monroe County Sheriff's Office may also be reached directly by calling 911, or in person at 245 Summit Point Dr. Henrietta, NY 14467. Additional information about the Monroe County Sheriff's Office may be found online at: www2.monroecounty.gov/sheriff-index.php

If you have been the complainant of domestic violence, dating violence, sexual assault, or stalking, you should report the incident promptly to the Title IX Coordinator or Public Safety. The Title IX Coordinator, Stacy DeRooy can be reached by calling, writing or in person at the August Center; 115 Lomb Memorial Dr.; (585) 475-7158; stacy.deroy@rit.edu. RIT will provide resources, on campus, off campus or both. Services to include medical and mental health to persons who have been victims of sexual assault, domestic violence, dating violence, or stalking. RIT will apply appropriate disciplinary procedures to those who violate this policy.

As time passes, evidence may dissipate or become lost or unavailable, thereby making investigation, possible prosecution, disciplinary proceedings, or obtaining protection from abuse orders related to the incident more difficult. If a victim chooses not to make a

complaint regarding an incident, he or she nevertheless should consider speaking with Public Safety or other law enforcement to preserve evidence in the event that the victim changes her/his mind at a later date.

Responding To And Preventing Sexual Harassment, Sexual Assault, Dating Violence, Domestic Violence, and Stalking:

Statistics in recent years have shown that reported incidents of rape and other forms of sexual assault on college campuses have increased nationwide. These types of incidents can be perpetrated by strangers, acquaintances, dates or current/former intimate partners. In fact, contrary to the belief that most rapists are strangers, complainants are actually much more likely to be abused by someone they know.

RIT is committed to creating and maintaining a community in which students, faculty, and staff can work, learn, and live together in an atmosphere free of all forms of harassment, exploitation, intimidation, or assault. RIT seeks to maintain a community in which all genders are respected.

RIT seeks to educate the campus community about the common circumstances that can lead to such offenses, possible methods of prevention and available resources for victims and accused. Individuals who commit these crimes are subject to severe sanctions through the student conduct process, the Human Resources office and/or the local criminal justice system. Upon completion of a prompt, fair and impartial investigation, trained staff in the Student Conduct Office or Human Resources Department will conduct a hearing or review the case to determine outcomes from the complaint. Sanctions may include warning, disciplinary probation, suspension, dismissal, expulsion, termination of employment, criminal

prosecution and civil suits. Victims are informed of their options and supported and assisted by RIT in pursuing the desired process. The student conduct process maintains a different standard of proof than the criminal process in determining accountability. The student conduct process uses the preponderance of evidence standard of proof while most criminal processes use beyond a reasonable doubt.

Sexual assaults and any other sex crimes should be reported to Public Safety as soon as possible. Victims may also report these crimes to local Law Enforcement. RIT personnel are available to assist the victim in notifying these authorities if he or she requests the assistance of the police. When the victim of a crime elects to or is unable (physically/mentally) to make such a report, Public Safety will assist with contacting law enforcement. When an incident is reported to any campus representative (Public Safety, Student Affairs, Residence Life staff, the Counseling Center, Student Health Services) the medical and psychological needs of the victim become top priority. Staff in all of these areas are trained to provide immediate support to victims while seeking the appropriate professional resources from other campus services. Immediate referral to appropriate counseling services is encouraged for all victims.

Public Safety staff trained in conducting prompt and fair sexual assault, domestic violence, dating violence, and stalking investigations will conduct a thorough and well documented investigation of the incident and provide resources and support throughout the process. Preserving evidence is very important for proof of a criminal offense in court as well as during the student conduct process. Victims may also contact RESTORE at their 24-hour confidential line (585) 546-2777 or (585) 546-7582 (TTY) for counseling and support services

provided beyond those provided by RIT. RIT makes referrals to numerous Rochester area agencies including Willow, Restore, The New York State Police and the Monroe County Sheriff's Department Victims' assistance advocates. Following the report of an incident, University officials will seek to identify appropriate alternative living and academic arrangements until such time as the judicial process is complete. Campus judicial process allows for complainants and accused to have others present during judicial proceedings. Complainants and those accused of all sexual assault cases are informed of the outcomes of the judicial process simultaneously and in writing. All gender based misconduct proceedings, which include intake, investigation, formal and informal proceedings and appeals are conducted by university officials who receive annual training. The training includes a multi modal approach for learning about protecting the safety of victims (a trauma informed response), promoting accountability in the process and creating a process which is equitable for all participants involved in the process. The Title IX Office provides an Online VAWA adjudicator training to all appeal and conduct hearing officials. The Public Safety and Title IX Investigators, the Title IX Coordinator and the Student Conduct and Conflict Resolution hearing officers participate in a wide variety of webinars, case debriefings, conferences and workshops annually. The student conduct process can be viewed in its entirety at www.rit.edu/academicaffairs/policiesmanual/d180.

RIT C.A.R.E.S Program

The 24-hour CARES (Campus Advocacy, Response, and Support) Program is a comprehensive service for victims of sexual assault, domestic violence, dating violence, and stalking. The CARES program is a service of the RIT Women's Center, in collaboration with campus and community partners. Calling this confidential service will provide access to trained advocates but not require filing a formal report of the incident to Public Safety or a local law enforcement agency.

Center for Women

Phone/Text: (585) 295-3533

E-mail CARES@RIT.edu

Reports can be filed at:
www.rit.edu/studentaffairs/womenandgender



How To Be An Active Bystander

Bystanders play a critical role in the prevention of sexual and relationship violence. They are "individuals who observe violence or witness the conditions that perpetuate violence. They are not directly involved but have the choice to intervene, speak up, or do something about it". We want to promote a culture of community accountability where bystanders are actively engaged in the prevention of violence without causing further harm. We may not always know what to do even if we want to help. Below is a list of some ways to be an active bystander. If you or someone else is in immediate danger, dial 911 or call Public Safety. This could be when a person is yelling at or being physically abusive towards another and it is not safe for you to interrupt.

- Notice the event
- Treat it as a concern
- Know a way to help (The 3 D's)
- Assume personal responsibility
- Implement the help



Bystander Options- the 3 D's

Direct: This approach just means you are directly interacting with the people involved in the situation. Do something like ask someone to stop what they are doing; check on someone you are worried about.

Delegate: If you can't do something yourself because of barriers, ask friends or even strangers to help; talk to a trusted RA, a coach, faculty or staff member, a bartender, call Public Safety.

Distract: This approach focuses on diversion. If you don't want to address the situation directly or even acknowledge you see it, try to think of a distraction that will defuse the situation or calm things down in the moment. A distraction might be "accidentally" spilling a drink; starting an unrelated conversation.

Additional Support services

- Counseling & Psychological Services (CAPS): (585) 475-2261 or (585) 475-6897
- Center for Spirituality and Religious Life: (585) 475-2135
- The Center for Women & Gender: (585) 475-7464
- Student Health Center: (585) 475-2255
- Legal Services for Students: (585) 475-4043 or sgstaff@rit.edu
- International Student Services (585) 475-6943

Victim & Witness Resources

Victim/Witness Resource and Assistance Program

RIT Public Safety can assist when a victim has obtained an order of protection or if they are interested in obtaining one. Information about obtaining an order of protection can be found at: www.lawny.org/node/13/order-protection-new-york

A copy of an order of protection should be given to RIT Public Safety. A complainant may then meet with Public Safety to develop a Safety Action Plan, which is a plan for Public Safety and the victim to reduce risk of harm while on campus or coming and going from campus. This plan may include, but is not limited to: escorts, special parking arrangements, changing classroom location or allowing a student to complete assignments from home, etc. RIT cannot apply for a legal order of protection, no contact order or restraining order for a victim from Monroe County Criminal or Family Courts. RIT may issue an institutional no contact order if deemed appropriate or at the request of the victim or accused. To the extent of the victim's cooperation and consent, RIT offices will work cooperatively to ensure that the complainant's health, physical safety, work and academic status are protected, pending the outcome of a formal university investigation of the complaint. For example, if reasonably available, a complainant may be offered changes to academic, living, or working situations in addition to counseling, health services, visa and immigration assistance and assistance in notifying appropriate local law enforcement.

The University does not publish the name of crime victims nor house identifiable information regarding victims in the campus' Daily Crime Log or online.

Upon written request, RIT will

disclose to the alleged victim of a crime of violence (as the term is defined in section 16 of title 18, United States Code www.gpo.gov/fdsys/pkg/USCODE-2011-title18/pdf/USCODE-2011-title18-part1-chap1-sec16.pdf), or a non-forcible sex offense, the report on the results of any disciplinary proceeding conducted by RIT against a student who is the alleged perpetrator of such crime or offense. If the alleged victim is deceased as a result of such crime or offense, the next of kin of such victim shall be treated as the alleged victim for the purposes of this paragraph.

For those who have experienced a traumatic event the road to recovery can be difficult and exhausting. RIT community members should know that the Public Safety Department is always available to help if you need assistance. Sometimes you might have questions about RIT's Student Conduct process or the criminal justice system. Other times you might just want to talk to someone about what you are going through.

Our program can be helpful immediately following an event or it might be several months before you

have questions. No matter what has happened to you or the time that has elapsed since the incident, RIT cares about your healing journey. The program is designed to help you after experiencing a crime.

Resource and assistance services typically include:

- Consultation about a problem situation, incident or crime.
- Exploring options available for healing or counseling.
- Information and referral to police and related agencies.
- Explanation of court and legal procedures.
- Assistance in preparing for, and accompaniment to hearings and court appearances.

If you or your family is experiencing difficult times, please call Assistant Director, Tony Yazback, directly during business hours at (585) 475-6192, or e-mail axycps@rit.edu. He will help you or find caring people in our community that specialize in your particular need. You are not alone in this process and we will work together to lend assistance.



Emergency Preparedness & Response

RIT is taking many proactive measures to upgrade the level of security on campus, especially with the nation's heightened awareness to the threat of terrorist attacks. Please know that our emergency response is based on a national model that is very flexible and can be applied to a variety of scenarios. Our response integrates fully with local, state, and federal emergency service professionals. RIT regularly communicates, prepares, and practices emergency management with area service providers through Monroe County's Office of Emergency Preparedness. In an emergency situation, we are prepared to work together to stabilize an incident, maintain the safety of all, take action to alleviate the challenge, and prepare for the transition to business as usual. If necessary, we will provide updated information through broadcast e-mail, voicemail and postings on the university's website. In the event of an emergency in the Greater Rochester Metropolitan area, you are advised to stay tuned to local radio and television broadcasts for additional information.

Public Safety Department and key university personnel practice managing emergencies and continually update and evaluate our decision making model. We are committed to a calm and rational approach to securing the safety of our community. Please support these efforts by staying alert to any suspicious behavior and securing your property, vehicle and residences. Suspicious acts or concerns should be reported immediately to Public Safety at (585) 475-3333. More information on safety and emergency procedures can be found at www.rit.edu/fa/publicsafety/.

Emergency Response and

Evacuation Procedures

The Director of Business Continuity is responsible for the Critical Incident Management Program and Emergency Plans and Procedures. These are designed to be an all-hazards disaster response and emergency management plan that includes planning, mitigation, response, and recovery actions.

Priorities for response are to:

1. Protect and preserve human life and health
2. Provide for incident stabilization
3. Protect RIT property and structures
4. Protect and conserve the environment
5. Facilitate continuity of academic and business operations

Individual emergency action information for community members is published in the Emergency Action Plan. It includes basic evacuation and shelter procedures, how to report an emergency, as well as response information for individuals for a variety of hazards including fire, armed intruder, and hazardous materials.

Drills, Exercises, and Training

RIT conducts a number of emergency management exercises per year with departments and organizations that are a part of the Critical Incident Management Program. Some of these exercises are functional in nature for individual departments, while others are collective in nature involving multiple departments. Where appropriate, local emergency response agencies (Law Enforcement, HAZMAT, Fire Department, Emergency Medical Services) are included. After-action reviews are conducted in order to identify strengths and areas for improvement.

In conjunction with at least

one emergency management exercise each year, RIT will notify the community of the exercise and remind the community of the information included in the University's publicly available information regarding emergency response procedures.

Fire evacuation drills are conducted by the Environmental Health and Safety Department in academic, administrative and residence facilities each year.

Evacuation Procedures:

Four evacuation levels are used on campus:

LEVEL 1 Individual Building Evacuation. These are initiated by appropriate alarms (fire), and require all individuals to immediately evacuate a building. Evacuation routes and procedures are posted inside campus buildings. Center for Residence Life personnel and facility managers are trained how to appropriately evacuate campus buildings. RIT's Fire Safety Technician coordinates regular unscheduled fire drills in residential areas during the year.

LEVEL 2 Temporary Sector Evacuation (short term). These are initiated by the appropriate emergency response organization based on the individual threat to the sector. These apply most specifically to the need to evacuate student residence halls. Resident students will be accommodated in community mass care shelters and other temporary housing for a short term.

LEVEL 3 Temporary Full Evacuation (short term). The entire campus must be evacuated due to a university-wide threat (i.e. flood, pandemic). All non-essential staff and faculty will be released, classes and events canceled as necessary. Student residence areas will be evacuated as in a Level 2 evacuation.



RIT Campus Moderate Flood

Maximum Flood Depth 10 Feet
100 Year Flood of 1981

LEVEL 4 Full Evacuation (long term). The entire campus community will be evacuated with limited essential staff remaining. Classes and events will be canceled as necessary. Resident students will be asked to go to their home of record for the duration of the emergency (i.e. high severity index pandemic flu).

Emergency Notification

RIT is committed to ensuring the campus community receives timely, accurate, and useful information in the event of a significant emergency or dangerous situation on campus or in the local area that poses an immediate threat to the health and safety of campus community members. RIT uses the emergency notification system (RIT Alert) to send mass notifications via text and voice to mobile phones, alert beacons, and desktop alerts. In addition, messages are posted on www.rit.edu and emergency.rit.edu. RIT Alert is tested annually.

Confirming the Existence of a Significant Emergency or Dangerous Situation and Initiating the Emergency Notification System

Public Safety is responsible for confirming the existence of a significant emergency or dangerous situation. Once Public Safety confirms that there is, in fact, an emergency or dangerous situation

that poses an immediate threat to the health or safety of some or all members of the campus community, Public Safety will issue the emergency notification using RIT Alert.

If, in the professional judgment of first responders, issuing a notification potentially compromises efforts to assist a victim or to contain, respond to, or otherwise mitigate the emergency, RIT may elect to delay issuing an emergency notification. As soon as the condition that may compromise efforts is no longer present, the University will issue the emergency notification to the campus community.

Determining the Appropriate Segment or Segments of the Campus Community to Receive an Emergency Notification

Emergency notifications will always be sent to the entire campus community due to the size of campus and the proximity of facilities on campus. Follow-up messaging will provide clarification or further information as needed.

Determining the Contents of the Emergency Notification

RIT has developed templates for emergency notifications so that they can be selected, modified as needed and sent as quickly as possible

to the campus community. Public Safety is responsible for selecting the appropriate template based on their understanding of the type of emergency that is occurring and requires immediate notification. In those cases where there are no pre-determined template messages in the system, the Public Safety official sending the alert will develop the most succinct message to convey the appropriate information to the community. The goal is to ensure individuals are aware of the situation and that they know the steps to take to safeguard their own personal safety and that of those in the community.

Enrolling in the University's Emergency Notification System

All students, staff and faculty should ensure their mobile phone number is in the RIT Alert system.



Faculty and Staff – go to myinfo.rit.edu and add in the phone numbers emergency notification information area.

Students – go to SIS and enter in the Cell/Mobile phone field of the Personal Information area.



Timely Warnings

All crimes should be promptly reported to Public Safety. The law requires “timely reports to the campus community on crimes considered to be a serious on-going threat to students and employees”. These crimes may include but are not limited to: homicides, sex offenses, robbery, aggravated assault, burglary, motor vehicle theft and arson as well as hate crimes. The investigating officer or an investigator will collect all of the necessary facts in order to formulate the crime alert with relevant facts and crime prevention information. The Public Safety Director or Assistant Director will author Crime Alert notifications that are timely, withholding the names of victims and distributes them electronically via email and Message Center to the entire campus community. The intention of the warnings are to aid in the prevention of similar occurrences.

Electronic Crime Alerts are also available under the Popular Links at: <http://finweb.rit.edu/publicsafety/>



Definitions

The following section provides definitions and language used by RIT in RIT policy and procedure, NYS Penal Code and Uniform Crime Report definitions which are used to compile crime statistics for this annual report.

On Campus Definitions

"Affirmative Consent" means the ability to engage in activity knowingly and voluntarily. Consent to sexual activity must be affirmative, and, whenever the word "Consent" is used in this policy, it should be understood to mean Affirmative Consent as defined here.

Affirmative Consent to sexual activity must be a knowing, voluntary, and mutual decision among all participants to engage in sexual activity. Consent can be given by words (verbal or signed) or actions, as long as those words or actions create clear permission regarding willingness to engage in sexual activity. Silence or lack of resistance, in and of itself, does not demonstrate Consent.

The definition of Consent does not vary based upon a participant's sex, sexual orientation, gender identity, or gender expression. Consent must be mutual and exist from the beginning to end of each instance of sexual activity and for each form of sexual contact. Consent cannot be gained by force, by ignoring, or acting in spite of the objections of another. Consent to one form of sexual activity does not imply consent to other forms of sexual activity. There is no duty to fight off a sexual aggressor.

Consent may be initially given but can be withdrawn at any time. When Consent is withdrawn or can no longer be given, all sexual activity must stop. Consent to engage in sexual activity is required regardless of whether the person initiating the sexual act is under the influence of drugs and/or alcohol (See, "Incapacitation" Section IV.I.). A person shall not knowingly take advantage of another person who has an intellectual or physical disability, who is incapacitated by prescribed medication, alcohol or other chemical drugs, or who is not conscious or awake, and thus is not able to give Consent as defined above. Consent cannot be given when it is the result of any coercion, intimidation, force, or threat of harm. Consent is active, not passive.

Certain states have designated a minimum age under which a person cannot give Consent. In the state of New York, the age of Consent is 17.

"Incapacitation" means the inability, temporarily or permanently, to give Consent because the individual is mentally and/or physically helpless, asleep, unconscious, or unaware that sexual activity is occurring. Incapacitation may result from the use of alcohol and/or drugs. Incapacitation is a state beyond drunkenness or intoxication. The impact of alcohol and other drugs varies from person to person; however, warning signs that a person may be incapacitated may include, but are not limited to slurred speech, unclear signed communication,

vomiting, involuntary elimination of bodily fluids, unsteady gait, odor of alcohol, combativeness, uncharacteristic behavior, or emotional volatility. The question is whether the Respondent knew, or a sober, reasonable person in a similar set of circumstances as the Respondent, should have known, that the Complainant was incapacitated.

"Respondent" means any individual alleged to have engaged in Prohibited Conduct. When a Respondent has multiple roles within the university, the university's Title IX Coordinator will determine which investigatory procedure will apply based on the facts and circumstances of a particular incident, such as which role predominates and/or the role most applicable in the incident.

"Complainant" means a person who has allegedly experienced Prohibited Conduct that has been reported to RIT. RIT may also be the Complainant if (1) RIT elects to investigate reports of potential violation(s) of this Policy on its own accord and in its sole discretion, or (2) a Non-Member Complainant is the person who experienced Prohibited Conduct or the subject of a report.

"Unwelcomed Conduct" means conduct that is not initiated by the recipient or which is regarded as offensive to the recipient, without regard to the intent of the individual engaging in the conduct.

"Dating Violence" means any intentional act or threatened act of violence against the Complainant committed by a person who is or has been in a social relationship of a romantic or intimate nature with the Complainant. Dating Violence may include behavior that seeks to establish power and control over the Complainant by causing the Complainant to fear violence to themselves or another person. Such behavior may also take the form of harassment, property damage, intimidation, and violence or a threat of violence to one's self (i.e., the Respondent) or a third party. It may involve one act or an ongoing pattern of behavior. The university will evaluate the existence of an intimate relationship based upon the Complainant's statement, taking into consideration the length of the relationship, the type of relationship, and the frequency of interaction between the persons involved in the relationship.

"Domestic Violence" means means any intentional act or threatened act of violence against the Complainant committed by (1) a current or former spouse or intimate partner; (2) a person with whom the Complainant shares a child; or (3) anyone who is protected from the Respondent's acts under the domestic or family violence laws of New York. Dating Violence also includes behavior that seeks to establish power and control over the Complainant by causing the Complainant to fear violence to themselves or another person. Such behavior may also take the form of harassment, property damage, intimidation, and violence or a threat of violence to one's self (i.e., the Respondent) or a third party. It may

involve one act or an ongoing pattern of behavior.

"Gender-Based Harassment" is much like Sexual Harassment and is evaluated based on the same standards. However, Gender-Based Harassment need not be sexual in nature and is instead characterized by hostility because of gender, gender expression, or gender-stereotyping, including failing to conform to stereotypical notions of masculinity or femininity.

"Sex Discrimination" means the adverse treatment of an individual based on that individual's gender, sexual orientation, gender identity, or gender expression. Sex discrimination includes Sexual Harassment.

"Sexual Assault" means (1) Non-Consensual Sexual Contact, or (2) Non-Consensual Sexual Intercourse.

(1) "Non-Consensual Sexual Contact" means any intentional sexual touching, however slight, with any object or body part, whether directly or through clothing as follows: (a) any intentional touching of the lips, breasts, buttocks, groin, genitals, inner thigh, or anus or intentionally touching another with any of these body parts; (b) making another touch anyone or themselves with or on any of these body parts; and (c) intentional touching of another's body part for the purpose of sexual gratification, arousal, humiliation, or degradation.

(2) "Non-Consensual Sexual Intercourse" means any penetration, however slight, with any object or body part as follows: (a) penetration of the vulva by a penis, object, tongue, or finger; (b) anal penetration by a penis, object, tongue, or finger; and (c) any contact, no matter how slight, between the mouth of one person and the genitalia of another person.

"Sexual Exploitation" occurs when a person takes non-consensual or abusive sexual advantage of another.

"Sexual Harassment" means Unwelcome Conduct of a sexual nature, which unreasonably interferes with work or the educational environment. Sexually harassing conduct is offensive, unwanted or intimidating behavior of a sexual nature and may be physical, verbal, written, visual (including sign language), or may occur by electronic means. When harassment becomes so severe or pervasive as to unreasonably interfere with an individual's ability to work, learn or participate in RIT's programs, or when the receipt of some benefit is linked to another's submission to sexual behavior, it is in violation of this policy. RIT reserves the right to remedy, and to discipline, behavior that is offensive even if it is not in violation of this policy if it may lead to a violation of this policy if left unaddressed. However, the fact that a person was personally offended by a statement or incident does not alone constitute a violation of this policy. RIT shall consider the context of a communication or incident, the relationship of the individuals involved in the communication or incident, whether an incident was an isolated incident or part of a broader pattern or course of offensive conduct, the seriousness of the incident, the impact of the incident, and whether the incident would be considered offensive

to most people, as opposed to a particular person.

Sexual Harassment can include any or all of the following behaviors, as well as others which are not listed; this list is intended to be illustrative, not exhaustive:

1. Harassment through public or private insult, sexually suggestive comments concerning a person's body or behavior, and sexual demands;
2. Subtle or overt pressure to comply with demands of sexual activity;
3. Remarks about another person's clothing, body, sexual activities, sexual preferences, gender identity or sexual orientation, as well as teasing, jokes, remarks, or gestures which are sexual in nature;
4. Unnecessary touching, pinching, patting, or exposure of another person's body;
5. Unwarranted staring at another person's body;
6. Unwanted communications of a sexual nature in any form, over any medium, and in any media;
7. Requests or demands for sexual favors accompanied by implied or overt threats or promised rewards, e.g. grades, class or clinical assignments, recommendations, student employment (for students) or assignments, promotions, discipline, references (for employees); or
8. Repetition of unwanted invitations for dates, reconciliation, or communications related to the relationship.

Sexual Harassment is established by determining whether the particular facts and circumstances of each case meet the definitions of this policy.

"Stalking" means engaging in a course of conduct directed at a specific individual that would cause a reasonable individual to fear for their safety or the safety of others, or suffer substantial emotional distress and/or which unreasonably interferes with the work or educational environment. Course of conduct means two or more acts including but not limited to Unwelcomed Conduct in which the alleged stalker directly, indirectly, or through third parties, by any action, method, device or means follows, observes, surveils, threatens, trespasses, or damages property, or gives a person gifts. Stalking also includes cyber-stalking in which electronic media such as the internet, social networks, blogs, cell phones, texts or other similar devices or forms of contact are used.

"Retaliation" means any adverse action taken against an individual for making a good faith report under this Policy or participating in any investigation or proceeding under this Policy. Retaliation includes threatening, intimidating, harassing, or any other conduct that would discourage a reasonable person from engaging in activity protected under this Policy. Retaliation is a serious violation that can subject an offender to discipline independent of the merits of the underlying allegations.

New York State Sex Offense Laws

NYS Sex offenses; Lack of Consent

- Whether or not specifically stated, it is an element of every offense defined in this article that the sexual act was committed without consent of the victim.

- Lack of consent results from:

- Forcible compulsion; or
 - Incapacity to consent; or

- Where the offense charged is sexual abuse or forcible touching, any circumstances in addition to forcible compulsion or incapacity to consent, in which the victim does not expressly or impliedly acquiesce in the actor's conduct; or

- Where the offense charged is rape in the third degree as defined in subdivision three of section 130.40 in addition to forcible compulsion, circumstances under which, at the time of the act of intercourse, oral sexual conduct or anal sexual conduct, the victim clearly expressed that he or she did not consent to engage in such act, and a reasonable person in the actor's situation would have understood such person's words and acts as an expression of lack of consent to such act under all circumstances.

- A person is deemed incapable of consent when he or she is:

- Less than 17 years old; or
 - Mentally disabled; or
 - Mentally incapacitated; or
 - Physically helpless; et al

Sexual Misconduct

- Sexual intercourse with another person without such person's consent.

Penalty: Class A misdemeanor

Rape

- Sexual intercourse with another person who is incapable of consent by reason of some factor other than being less than seventeen years old.
- Being eighteen years old or more, engages in sexual intercourse with another person less than fifteen years old; by reason of being mentally disabled or mentally incapacitated.
- By forcible compulsion; or who is incapable of consent by reason of being physically helpless.

Penalty: Class E to Class B felony

Sexual Abuse

- Subjects another person to sexual contact without the latter's consent; by forcible compulsion; when such

other person is incapable of consent by reason of age; by reason of being physically helpless; or when the other person is less than eleven years old.

Penalty: Class B misdemeanor to Class D felony

Aggravated Sexual Abuse

- He or she inserts a foreign object or finger in the vagina, urethra, penis, or rectum of another person and the other person is incapable of consent by reason
- of some factor other than being less than seventeen years old; causing physical injury to such person and such person is incapable of consent by reason of some factor other than being less than seventeen years old.
- Use of force, being physically helpless, and age of the victim Impacts severity of penalties.

Stalking

When a person intentionally, and for no legitimate purpose, engages in a course of conduct directed at a specific person, and knows or reasonably should know that such conduct:

- Is likely to cause reasonable fear of material harm to the physical health, safety or property of such person, a member of such person's immediate family or a third party with whom such person is acquainted; or
- Causes material harm to the mental or emotional health of such person, where such conduct consists of following, telephoning or initiating communication or contact with such person, a member of such person's immediate family or a third party with whom such person is acquainted, and the actor was previously clearly informed to cease that conduct; or
- Is likely to cause such person to reasonably fear that his or her employment, business or career is threatened, where such conduct consists of appearing, telephoning or initiating communication or contact at such person's place of employment or business, and the actor was previously clearly informed to cease that conduct.

Penalty: Class B misdemeanor to a Class D felony

FBI Uniform Crime Report Definitions

(Used for collecting statistics for Clery purposes)

Forcible Rape- through 2012

The Carnal knowledge of a person, forcibly and/or against that person's will: or not forcibly against the person's will when the victim is incapable of giving consent because of his/her temporary or permanent mental or physical incapacity (or because of his/her youth). This offense includes the forcible rape of both males and females. **Rape ** new definition for 2013 forward**

Penetration no matter how slight, of the vagina or anus with any body part or object, or oral penetration by a sex organ of another person, without the consent of the victim. This definition includes any gender of victim or perpetrator.

Stalking (42 U.S.C. 13925(a)):

Engaging in a course of conduct directed at a specific person that would cause a reasonable person to

- Fear for the person's safety or the safety of others; or
- Suffer substantial emotional distress

For the purposes of this definition

- Course of conduct means two or more acts, including, but not limited to, acts which the stalker directly, indirectly, or through third parties, by any action, method, device, or means follows, monitors, observes, surveils, threatens, or communicates to or about, a person, or interferes with a person's property.
- Substantial emotional distress means significant mental suffering or anguish that may, but does not necessarily, require medical or other professional treatment or counseling.
- Reasonable persons means a reasonable person under similar circumstances and with similar identities to the victim.
- For the purposes of complying with the requirements of this section and section 668.41, any incident meeting this definition is considered a crime for the purposes of Clery Act reporting.

•Domestic Violence (42 U.S.C 13925(a)):

Includes felony or misdemeanor crimes of violence committed by: A current or former spouse or intimate partner of the victim

- By a person with whom the person shares a child in common
- By a person who is cohabitating with or has cohabitated with the victim as a spouse or intimate partner
- By a person similarly situated to a spouse of the victim

under the domestic or family violence laws of the jurisdiction in which the crime of violence occurred; or

- By any other person against an adult or youth victim who is protected from that person's acts under the domestic or family violence laws of the jurisdiction in which the crime of violence occurred.

Dating Violence (42 U.S.C 13925(a))

A violation committed by a person

- Who is or has been in a social relationship of a romantic or intimate nature with the victim; and
- The existence of such a relationship shall be determined based on the reporting party's statement with consideration of:

The length of the relationship,

The type of relationship,

The frequency of interaction between the persons involved in the relationship

For the purposes of this definition

- Dating Violence includes, but is not limited to, sexual or physical abuse or the threat of such abuse.
- Dating violence does not include acts covered under the definition of domestic violence.

For the purposes of complying with the requirements of this section and section 668.41, any incident meeting this definition is considered a crime for the purposes of Clery Act reporting.

Crime Statistics

In accordance with the federal Student Right-to-Know Act, RIT annually provides statistics for crimes reported to Public Safety, local law enforcement agencies and individuals on campus defined as campus security authorities. Designated campus security authorities are: resident advisors, orientation leaders, athletic director, coaches and trainers, academic advisors, public safety, parking & transportation staff, student life center desk attendants, deans, and campus administrators at global campuses. A person reporting a crime to the Public Safety Department also has the right to report it to the Monroe County Sheriff's Office. The Public Safety Officer taking the report will assist the victim with that process upon request. Written requests for statistical information are made on an annual basis to the local police department as well as campus security authorities at RIT who have responsibility for student and campus activities.

All of the statistics are gathered, compiled and reported to the University community via the Annual Report published by the Public Safety Department. A notice of the availability of the Annual Report is emailed to every enrolled student and employee on an annual basis. Other campus departments such as Student Affairs, Student Conduct and Residence Life also report criminal incidents to the Department for inclusion in RIT's Crime Statistics. Although information contained in the Annual Report also includes information about on and off campus resources, the official reporting entity for criminal offenses that occur at RIT is the Public Safety Department. Reporting incidents to the Department will aid in providing timely warning notices to the community, when appropriate, and will ensure inclusion of that reported incident in the annual disclosure of crime statistics for the institute. Public Safety also publishes safety notifications regarding more serious incidents and distributes them campus wide. The student magazine is also provided with a weekly summary of campus crime related incidents. For statistics regarding RIT campus policy violations, please go to the RIT Center for Student Conduct and Conflict Management Services web page at www.rit.edu/studentaffairs/studentconduct/ or contact their office at (585) 475-5662.

Crime Definitions for Clery Statistics

Crime Location Definitions:

On campus includes any building or property owned or controlled by an institution of higher education within the same reasonably contiguous geographic area of the institution and used by the institution in direct support of, or in a manner related to, the institution's educational purposes, including residence halls, and property that is frequently used by students.

RESIDENTIAL FACILITIES includes residence halls and on campus apartment housing.

PUBLIC PROPERTY includes thoroughfares, streets, sidewalks, and parking facilities within the campus, or immediately adjacent to and accessible from the campus.

NON-CAMPUS sites means any property owned or controlled by a student organization officially recognized by the institution and is used in direct support of, or in relation to, the institution's educational purposes, and is frequently used by students, and is not within the same reasonably contiguous geographic area of the institution. The RIT Inn & Conference Center located at 5257 West Henrietta Road is included in the Non-Campus Site category.

Crime Definitions:

The following definitions are those outlined in the US Department of Justice Uniform Crime Reporting Manual which colleges and universities are required to use in reporting crime statistics.

MURDER & NON-NEGLIGENT MANSLAUGHTER The willful (non-negligent) killing of one human being by another. This includes any death by injuries received in a fight, argument, quarrel, assault or the commission of a crime.

MANSLAUGHTER BY NEGLIGENCE The killing of another person through gross negligence.

SEXUAL ASSAULT (SEX OFFENSES) is any act directed against another person, without the consent of the victim, including instances where the victim is incapable of giving consent. An offense that meets the definition of rape, fondling, incest, or statutory rape as used in the FBI's UCR program.

RAPE is the penetration, no matter how slight, of the vagina or anus with any body part or object, or oral penetration by a sex organ of another person, without the consent of the victim.

FONDLING is the touching of the private body parts of another person for the purposes of sexual gratification, without the consent of the victim, including instances where the victim is incapable of giving consent because of his/her age or because of his/her temporary or permanent mental incapacity.

INCEST is sexual intercourse between persons who are related to each other within the degrees wherein marriage is prohibited by law.

STATUTORY RAPE is sexual intercourse with a person who is under the statutory age of consent.

ROBBERY is the taking, or attempting to take, anything of value from the care, custody, or control of a person or persons by force or violence and/or by putting the victim in fear.

AGGRAVATED ASSAULT is an unlawful attack by one person upon another for the purpose of inflicting severe or aggravated bodily injury. This type of assault usually is accompanied by the use of a weapon or by means likely to produce death or great bodily harm.

BURGLARY is the unlawful entry of a structure to commit a felony or theft.

MOTOR VEHICLE THEFT the theft or attempted theft of a motor vehicle. A motor vehicle is any self-propelled vehicle that runs on land surface and not on rails such as sport utility vehicles, automobiles, trucks, buses, motorcycles, motor scooters, trail bikes, mopeds, all-terrain vehicles, self-propelled motor homes, snowmobiles, golf carts and motorized wheelchairs.

ARSON is any willful or malicious burning or attempt to burn, with or without intent to defraud, a dwelling house, public building, motor vehicle or aircraft, personal property of another, etc.

LIQUOR LAW VIOLATIONS The violations of state laws or local ordinances prohibiting the manufacture, sale, transporting, furnishing, possessing of intoxicating liquor; maintaining unlawful drinking places; furnishing liquor to minor or intemperate person; using a vehicle for illegal transportation of liquor; drinking on a train or public conveyance; and all attempts to commit any of the aforementioned.

DRUG ABUSE VIOLATIONS Violations of federal, state, and local laws relating to the unlawful possession, sale, use, growing, manufacturing, and making of narcotic drugs or marijuana.

ILLEGAL WEAPONS POSSESSION VIOLATIONS The violations of law and ordinances dealing with weapon offenses.

HATE CRIMES Directed at individuals because of race, gender, national origin, religion, ethnicity, sexual orientation, gender identity, or disability for the crime categories listed above. The disclosure above includes all crimes reported in the general disclosures as well as any other crime involving bodily injury and reported to local police or campus security authorities.



Reported Offenses | RIT Rochester, NY

REPORTED OFFENSES	YEAR	ON CAMPUS	NON CAMPUS	PUBLIC PROPERTY	RESIDENTIAL FACILITIES	UNFOUNDED CRIMES
Murder & Non-Negligent Manslaughter	2018	0	0	0	0	0
	2017	0	0	0	0	0
	2016	0	0	0	0	0
Negligent Manslaughter	2018	0	0	0	0	0
	2017	0	0	0	0	0
	2016	0	0	0	0	0
Rape (includes Sodomy, & Sexual Assault w/Object)	2018	19	0	0	19	0
	2017	10	0	0	10	0
	2016	9	0	0	9	0
Fondling	2018	9	1	0	7	1
	2017	9	1	0	3	0
	2016	5	1	0	4	0
Incest	2018	0	0	0	0	0
	2017	0	0	0	0	0
	2016	0	0	0	0	0
Statutory Rape	2018	0	0	0	0	0
	2017	0	0	0	0	0
	2016	0	0	0	0	0
Robbery	2018	0	0	0	0	0
	2017	1	0	0	1	0
	2016	0	1	0	0	0
Aggravated Assault	2018	0	0	1	0	0
	2017	0	0	0	0	0
	2016	0	1	0	0	0
Burglary	2018	7	1	0	7	0
	2017	10	0	0	9	0
	2016	0	1	0	0	0
Motor Vehicle Theft	2018	1	0	0	0	0
	2017	2	0	0	0	0
	2016	0	0	0	0	0
Liquor Law Arrests	2018	0	0	0	0	0
	2017	0	0	0	0	0
	2016	0	0	0	0	0
Drug Law Arrests	2018	2	0	0	1	0
	2017	3	0	0	3	0
	2016	1	0	0	1	0
Weapons Law arrests	2018	0	0	0	0	0
	2017	0	0	0	0	0
	2016	0	0	0	0	0
Liquor Law Violations Referred For Disciplinary Action	2018	102	0	0	99	0
	2017	71	0	0	70	0
	2016	66	0	0	57	0
Drug Law Violations Referred For Disciplinary Action	2018	103	3	0	67	0
	2017	103	7	0	84	0
	2016	101	2	0	67	0
Weapons Law Violations Referred For Disciplinary Action	2018	2	0	0	1	0
	2017	0	0	0	0	0
	2016	3	0	0	3	0
Arson	2018	0	1	0	0	0
	2017	1	0	0	1	0
	2016	0	0	0	0	0
Domestic Violence	2018	0	0	0	0	0
	2017	1	0	0	1	0
	2016	0	0	0	0	0
Dating Violence	2018	7	0	0	5	0
	2017	11	0	0	9	0
	2016	20	0	0	19	0
Stalking	2018	30	0	0	13	0
	2017	17	0	0	8	0
	2016	23	0	0	9	0

***Note: Residential Facility Crime Statistics are a subset of the On Campus Category, i.e. they are counted in both categories.**

	YEAR	# OF INCIDENTS	TYPE	BIAS	GEOGRAPHY
Hate Crime Statistics	2018	1	INTIMIDATION	RELIGION	ON CAMPUS - Residential
	2018	1	VANDALISM	RELIGION	ON CAMPUS
	2017	1	INTIMIDATION	RACE	ON CAMPUS - Residential
	2016	1	SIMPLE ASSAULT	GENDER	ON CAMPUS
	2016	1	INTIMIDATION	RACE	ON CAMPUS - Residential

Reported Offenses | RIT Dubrovnik, Croatia

REPORTED OFFENSES	YEAR	ON CAMPUS	NON CAMPUS	PUBLIC PROPERTY	RESIDENTIAL FACILITIES	UNFOUNDED CRIMES
Murder & Non-Negligent Manslaughter	2018	0	0	0	0	0
	2017	0	0	0	0	0
	2016	0	0	0	0	0
Negligent Manslaughter	2018	0	0	0	0	0
	2017	0	0	0	0	0
	2016	0	0	0	0	0
Rape (includes Sodomy, & Sexual Assault w/Object)	2018	0	0	0	0	0
	2017	0	0	0	0	0
	2016	0	0	0	0	0
Fondling	2018	0	0	0	0	0
	2017	0	0	0	0	0
	2016	0	0	0	0	0
Incest	2018	0	0	0	0	0
	2017	0	0	0	0	0
	2016	0	0	0	0	0
Statutory Rape	2018	0	0	0	0	0
	2017	0	0	0	0	0
	2016	0	0	0	0	0
Robbery	2018	0	0	0	0	0
	2017	0	0	0	0	0
	2016	0	0	0	0	0
Aggravated Assault	2018	0	0	0	0	0
	2017	0	0	0	0	0
	2016	0	0	0	0	0
Burglary	2018	0	0	0	0	0
	2017	0	0	0	0	0
	2016	0	0	0	0	0
Motor Vehicle Theft	2018	0	0	0	0	0
	2017	0	0	0	0	0
	2016	0	0	0	0	0
Liquor Law Arrests	2018	0	0	0	0	0
	2017	0	0	0	0	0
	2016	0	0	0	0	0
Drug Law Arrests	2018	0	0	0	0	0
	2017	0	0	0	0	0
	2016	0	0	0	0	0
Weapons Law arrests	2018	0	0	0	0	0
	2017	0	0	0	0	0
	2016	0	0	0	0	0
Liquor Law Violations Referred For Disciplinary Action	2018	0	0	0	0	0
	2017	0	0	0	0	0
	2016	0	0	0	0	0
Drug Law Violations Referred For Disciplinary Action	2018	0	0	0	0	0
	2017	0	0	0	0	0
	2016	0	0	0	0	0
Weapons Law Violations Referred For Disciplinary Action	2018	0	0	0	0	0
	2017	0	0	0	0	0
	2016	0	0	0	0	0
Arson	2018	0	0	0	0	0
	2017	0	0	0	0	0
	2016	0	0	0	0	0
Domestic Violence	2018	0	0	0	0	0
	2017	0	0	0	0	0
	2016	0	0	0	0	0
Dating Violence	2018	0	0	0	0	0
	2017	0	0	0	0	0
	2016	0	0	0	0	0
Stalking	2018	0	0	0	0	0
	2017	0	0	0	0	0
	2016	0	0	0	0	0

***Note: Residential Facility Crime Statistics are a subset of the On Campus Category, i.e. they are counted in both categories.**

	YEAR	# OF INCIDENTS	TYPE	BIAS	GEOGRAPHY
Hate Crime Statistics	2018	0	N/A	N/A	N/A
	2017	0	N/A	N/A	N/A
	2016	0	N/A	N/A	N/A

Reported Offenses | RIT Zagreb, Croatia

REPORTED OFFENSES	YEAR	ON CAMPUS	NON CAMPUS	PUBLIC PROPERTY	RESIDENTIAL FACILITIES	UNFOUNDED CRIMES
Murder & Non-Negligent Manslaughter	2018	0	0	0	0	0
	2017	0	0	0	0	0
	2016	0	0	0	0	0
Negligent Manslaughter	2018	0	0	0	0	0
	2017	0	0	0	0	0
	2016	0	0	0	0	0
Rape (includes Sodomy, & Sexual Assault w/Object)	2018	0	0	0	0	0
	2017	0	0	0	0	0
	2016	0	0	0	0	0
Fondling	2018	0	0	0	0	0
	2017	0	0	0	0	0
	2016	0	0	0	0	0
Incest	2018	0	0	0	0	0
	2017	0	0	0	0	0
	2016	0	0	0	0	0
Statutory Rape	2018	0	0	0	0	0
	2017	0	0	0	0	0
	2016	0	0	0	0	0
Robbery	2018	0	0	0	0	0
	2017	0	0	0	0	0
	2016	0	0	0	0	0
Aggravated Assault	2018	0	0	0	0	0
	2017	0	0	0	0	0
	2016	0	0	0	0	0
Burglary	2018	0	0	0	0	0
	2017	0	0	0	0	0
	2016	0	0	0	0	0
Motor Vehicle Theft	2018	0	0	0	0	0
	2017	0	0	0	0	0
	2016	0	0	0	0	0
Liquor Law Arrests	2018	0	0	0	0	0
	2017	0	0	0	0	0
	2016	0	0	0	0	0
Drug Law Arrests	2018	0	0	0	0	0
	2017	0	0	0	0	0
	2016	0	0	0	0	0
Weapons Law arrests	2018	0	0	0	0	0
	2017	0	0	0	0	0
	2016	0	0	0	0	0
Liquor Law Violations Referred For Disciplinary Action	2018	0	0	0	0	0
	2017	0	0	0	0	0
	2016	0	0	0	0	0
Drug Law Violations Referred For Disciplinary Action	2018	0	0	0	0	0
	2017	0	0	0	0	0
	2016	0	0	0	0	0
Weapons Law Violations Referred For Disciplinary Action	2018	0	0	0	0	0
	2017	0	0	0	0	0
	2016	0	0	0	0	0
Arson	2018	0	0	0	0	0
	2017	0	0	0	0	0
	2016	0	0	0	0	0
Domestic Violence	2018	0	0	0	0	0
	2017	0	0	0	0	0
	2016	0	0	0	0	0
Dating Violence	2018	0	0	0	0	0
	2017	0	0	0	0	0
	2016	0	0	0	0	0
Stalking	2018	0	0	0	0	0
	2017	0	0	0	0	0
	2016	0	0	0	0	0

***Note: Residential Facility Crime Statistics are a subset of the On Campus Category, i.e. they are counted in both categories.**

	YEAR	# OF INCIDENTS	TYPE	BIAS	GEOGRAPHY
Hate Crime Statistics	2018	0	N/A	N/A	N/A
	2017	0	N/A	N/A	N/A
	2016	0	N/A	N/A	N/A

Reported Offenses | RIT Dubai

REPORTED OFFENSES	YEAR	ON CAMPUS	NON CAMPUS	PUBLIC PROPERTY	RESIDENTIAL FACILITIES	UNFOUNDED CRIMES
Murder & Non-Negligent Manslaughter	2018	0	0	0	0	0
	2017	0	0	0	0	0
	2016	0	0	0	0	0
Negligent Manslaughter	2018	0	0	0	0	0
	2017	0	0	0	0	0
	2016	0	0	0	0	0
Rape (includes Sodomy, & Sexual Assault w/Object)	2018	0	0	0	0	0
	2017	0	0	0	0	0
	2016	0	0	0	0	0
Fondling	2018	0	0	0	0	0
	2017	0	0	0	0	0
	2016	0	0	0	0	0
Incest	2018	0	0	0	0	0
	2017	0	0	0	0	0
	2016	0	0	0	0	0
Statutory Rape	2018	0	0	0	0	0
	2017	0	0	0	0	0
	2016	0	0	0	0	0
Robbery	2018	0	0	0	0	0
	2017	0	0	0	0	0
	2016	0	0	0	0	0
Aggravated Assault	2018	0	0	0	0	0
	2017	0	0	0	0	0
	2016	0	0	0	0	0
Burglary	2018	0	0	0	0	0
	2017	0	0	0	0	0
	2016	0	0	0	0	0
Motor Vehicle Theft	2018	0	0	0	0	0
	2017	0	0	0	0	0
	2016	0	0	0	0	0
Liquor Law Arrests	2018	0	0	0	0	0
	2017	0	0	0	0	0
	2016	0	0	0	0	0
Drug Law Arrests	2018	0	0	0	0	0
	2017	0	0	0	0	0
	2016	0	0	0	0	0
Weapons Law arrests	2018	0	0	0	0	0
	2017	0	0	0	0	0
	2016	0	0	0	0	0
Liquor Law Violations Referred For Disciplinary Action	2018	0	0	0	0	0
	2017	0	0	0	0	0
	2016	0	0	0	0	0
Drug Law Violations Referred For Disciplinary Action	2018	0	0	0	0	0
	2017	0	0	0	0	0
	2016	0	0	0	0	0
Weapons Law Violations Referred For Disciplinary Action	2018	0	0	0	0	0
	2017	0	0	0	0	0
	2016	0	0	0	0	0
Arson	2018	0	0	0	0	0
	2017	0	0	0	0	0
	2016	0	0	0	0	0
Domestic Violence	2018	0	0	0	0	0
	2017	0	0	0	0	0
	2016	0	0	0	0	0
Dating Violence	2018	0	0	0	0	0
	2017	0	0	0	0	0
	2016	0	0	0	0	0
Stalking	2018	0	0	0	0	0
	2017	0	0	0	0	0
	2016	0	0	0	0	0

***Note: Residential Facility Crime Statistics are a subset of the On Campus Category, i.e. they are counted in both categories.**

	YEAR	# OF INCIDENTS	TYPE	BIAS	GEOGRAPHY
Hate Crime Statistics	2018	0	N/A	N/A	N/A
	2017	0	N/A	N/A	N/A
	2016	0	N/A	N/A	N/A

Public Safety Department

Public Safety Staff Members



Rodney Lezette
Assistant Director

Rod has been with the Public Safety Department since 1996 serving as an Officer, Supervisor, and Investigator. Rod holds a BA Degree from SUNY Potsdam and is currently studying for certification as a Physical

Security Professional through ASIS. Rod manages the Communications area, campus physical security design, alarm monitoring, and is the application administrator for the campus access control and CCTV platform. Rod can be reached at 585-475-6675 or rglcps@rit.edu.



Tony Yazback
Assistant Director

Tony Yazback joined the RIT Public Safety Department in 1999 and has a total of 25 years public safety experience. Tony earned an AAS degree in criminal justice and has successfully completed instruction

at the Monroe County Public Safety Training Center and the Department of Justice for Intimate Partner Stalking. Tony has conducted awareness programs to RIT employees, and students on identity theft, crime prevention, personal safety, and drug/alcohol abuse. Tony can be contacted at 585-475-6192 and at axycps@rit.edu.



Mark Koehler
Investigator

Investigator Koehler was hired as a Patrolman with the Rochester Institute of Technology Department of Public Safety in 1997. He was promoted to Sergeant in 2013 and in 2015 promoted to his current position of Investigator.

Investigator Koehler has an associate's degree in criminal justice and has received training in several specialties some of which include; Title IX, criminal investigations, & police background investigations. Investigator Koehler is committed to enhancing public safety and improving the quality of life for everyone who works, studies, or visits Rochester Institute of Technology. Email: mekcps@rit.edu



Amy Mercer
Investigator

Investigator Mercer joined the RIT Department of Public Safety road patrol division in 2013 after several years in private security. During her six years at RIT, Amy became a Field Training Officer

and was also promoted to a Senior Officer position. Investigator Mercer has an AAS degree in Criminal Justice from Monroe Community College. She has received specialized training at the Monroe County Public Safety Training Center and has also attended specific training in some disciplines which include but are not limited to; Title IX, VAWA, Enough is Enough, Criminal Investigations, Social Media Investigations & Drug Recognition. Investigator Mercer enjoys the college atmosphere and she believes strongly in community policing.

Patrol Lieutenants



Lt. Jake Griffin
Lieutenant

Lt. Jake Griffin joined the Public Safety Department in 2014 and earned his M.S. degree in Professional Studies from RIT in 2018. Lt.

Griffin currently manages 3rd platoon, Crime Prevention programming, and Officer development.



Lt. DJ Robinson
Patrol Lieutenant

Lt. DJ Robinson joined the Public Safety Department in 1998 and earned his B.S. in Criminal Justice from RIT.

He currently manages the 2nd platoon. Lt. Robinson manages the department training program as well as the department key control program.



Lt. Matthew Playfair
Patrol Lieutenant

Lt. Matthew Playfair earned a B.A. degree in Public Justice from SUNY Oswego and has worked in

the Public Safety Department since 2007. Lt. Playfair currently manages the 1st platoon and the Field Training Officer Program.



Lynn B. Daley
Director of Business Continuity

Lynn currently serves as the Director of Business Continuity at the Rochester Institute of Technology (RIT). She retired from the U.S. Army Reserve in 2007 at the rank of Major. She is an Operation Iraqi Freedom veteran, and received the Joint Service Commendation Medal while serving as the Chief of Transportation and Security and the Multinational Security Transition Command – Iraq. Lynn holds a Bachelor’s Degree in Biology from Thomas Edison State College and a Master’s Degree in Professional Studies from RIT.



Dave Edborg
Patrol Major

An Alumnus of RIT’s Criminal Justice Program, Dave has demonstrated his PRIDE each day at Public Safety for over 30 years. He is Patrol Major who served with distinction for six years on RIT’s Staff Council, three of which as Chair. Dave believes and demonstrates that “each of us at the Public Safety Department recognizes our responsibility for providing a safe environment in which to learn, work, live, recreate, and visit”. In 2013 Dave earned a certificate from the National Center for Spectator Sports Safety and Security from The University of Southern Mississippi.



Lt. Jim Entwistle
Lieutenant, Special Events Coordinator
Jim Entwistle began his career at RIT in August of 1990 after receiving his degree in Criminal Justice from MCC. Jim is responsible for assessing and applying safety practices, security measures and staffing requirements

for events held on campus. In addition, Lt. Entwistle is a state certified instructor for police general topics and NYS Guard Law.



Linda Fuller-Durfee
Emergency Communications Specialist

Linda Fuller-Durfee is an RIT alumnus who graduated from the Management Certificate program. Linda enjoys 30 years of service with Public Safety and manages our Communications Center.

Patrol Sergeants



Sgt. Adam Liesegang
Patrol Sergeant
Sgt. Adam Liesegang joined the Public Safety Department in 2012. He earned

his A.S. degree in Criminal Justice from MCC and his B.A. degree in political science from St. John Fisher College. He helps supervise the 2nd. Platoon and works to track crime trends for the Crime Prevention Program.



Sgt. Eric Williams
Patrol Sergeant
Sgt. Eric Williams graduated from RIT in 2008 earning a BS degree in Criminal Justice. He joined

the Public Safety Department in 2011, and now helps supervise 3rd platoon. Sgt. Williams oversees the Health and Safety inspections for the Residential Halls and Academic buildings.



Sgt. Tim Quartley
Patrol Sergeant
Sgt. Tim Quartley earned a B.S. degree in Criminal Justice from SUNY Brockport and has worked in the

Public Safety Department for five years. He currently helps supervise the 1st. Platoon and runs the department’s Field Training Officer program.



Fire Safety Report

Environmental Health & Safety Department

RIT is committed to ensure the health and safety of all employees, students, and visitors while they are on RIT's campus. The Environmental Health and Safety Department is charged with developing and implementing programs to ensure this health and safety, while being compliant with federal, state and local regulations/requirements. Through program implementation (including proper training) and health and safety awareness, RIT faculty, staff, and students should feel confident that they are working and learning in a safe and healthy environment.



David A. Armanini
Director of
Environmental
Health & Safety
Rochester Institute of
Technology
p. (585) 475-2040
e. daaehs@rit.edu



Gary Zinsmeister
Environmental
Health & Fire Safety
Technician
Rochester Institute of
Technology
p. (585) 475-2043
e. gwzehs@rit.edu

Environmental Health & Safety Contact Information

Mail:
Grace Watson Hall
61 Lomb Memorial Drive
Rochester, NY 14623
fax (585) 475-2966
www.rit.edu/fa/grms/ehs/

Fire System Descriptions in RIT Student Housing

Fire System Descriptions in RIT Student Housing (on campus)

Residence Halls

Each of the 1,757 rooms in the residence halls is equipped with sprinklers and automatic smoke detection. Fire system signals report directly to the RIT Public Safety Department from the fire panels. The Public Safety dispatcher immediately notifies the Henrietta Fire District via direct phone line located in Grace Watson Hall. The dispatch center is staffed 24/7, 365 days per year.

Perkins Green Apartment Complex

All buildings are equipped with automatic smoke/fire detection, sprinklers and alarm systems. Fire systems report directly to RIT Public Safety. In the event of a fire, RIT Public Safety immediately notifies the Henrietta Fire Department via direct phone line.

Colony Manor Apartment Complex

Each buildings is equipped with automatic smoke & fire detection systems. Fire systems report directly to RIT Public Safety Department. In the event of a fire, RIT Public Safety immediately notifies the Henrietta Fire Department via direct phone line.

University Commons Apartment Complex

All buildings are equipped with automatic smoke/fire detection, sprinklers and alarm systems. Fire systems report directly to RIT Public Safety. In the event of a fire, RIT Public Safety immediately notifies the Henrietta Fire Department via direct phone line.

Riverknoll Apartment Complex

All buildings are equipped with automatic smoke/fire detection and alarm systems. Systems report directly to the RIT Public

Safety Department. Public Safety immediately notifies the Henrietta Fire Department via direct phone line.

Greek Houses (6 freestanding fraternity/sorority houses)

All buildings are equipped with sprinkler systems and automatic smoke and fire detection systems. These system report directly to RIT Public Safety who immediately notifies the Henrietta Fire Department via direct phone line.

Global Village (4 mixed use facilities with housing)

All buildings are equipped with automatic smoke/fire detection, sprinklers and alarm systems. Fire systems report directly to RIT Public Safety. In the event of a fire, RIT Public Safety immediately notifies the Henrietta Fire Department via direct phone line.

RIT Inn and Conference Center Hotel (residential rooms)

The building is equipped with sprinklers and automatic smoke and fire detection system. System reports simultaneously to the Henrietta Fire District and the RIT Public Safety Department.



How To Report A Fire

If a fire occurs in a RIT building, community members should immediately contact the Public Safety Department at (585) 475-3333. If a member of the RIT community finds evidence of a fire that has been extinguished, and the person is not sure whether Public Safety has already responded, the community member should immediately notify Public Safety to investigate and document the incident.

Supervised Fire Drills

Campus fire protection and detection systems are tested regularly to ensure they function properly, and fire drills are performed to verify that facilities are evacuated appropriately. The Environmental Health and Safety Department coordinates these fire drills. Drills are to be treated as actual alarms with full evacuation of all occupants. Although drills are intended to be a surprise, the EH&S department schedules them with building managers and campus coordinators to avoid times where special events or activities may be taking place. Each building is required by the New York State Fire Code to have

evacuation drills performed quarterly with one of the drills performed during the hours of darkness.

During 2017, 457 fire drills were completed on campus. RIT's Fire Safety Technician, the Center for Residence Life staff, Housing Operations personnel, and campus facility managers coordinate and supervise these drills.

Fire Safety Inspections

On an annual basis, RIT is inspected by The New York State Office of Fire Prevention and Control (OFPC). The OFPC has been given the authority to inspect public and private facilities, including colleges and universities, to insure campuses are in compliance with the New York State Fire Safety Code.

Fire Safety Education

RIT Environmental Health and Safety staff presents fire extinguisher training for all Student Health Center staff and presents to the Summer Vestibule Program at NTID.

Environmental Health and Safety Department ensures that RIT is in compliance with all fire safety and detection codes.

RIT Housing Rules

Possession or use of candles or other open flame devices (even if for religious purposes) are not permitted in RIT housing. The burning of incense and potpourri is also prohibited. Setting materials on fire, possession or use of flammable or highly combustible material is prohibited.

All torchiere style lamps, including but not limited to those that use a halogen, (incandescent, or fluorescent bulbs) and any style lamp that uses a halogen bulb 300 watts or more are prohibited. All rope lighting and traditional holiday lights are prohibited. LED twinkle/mini lights are permitted on a temporary basis.

Fog machines and similar devices are prohibited as well as portable space heaters and free-standing air conditioners. Extension cords and multi-plug adapters are prohibited. Residents may use a UL listed plug strip that has a circuit breaker. No more than one strip can be used per outlet. The strip should not pose a safety hazard.

Tapestries and flags are prohibited in the residence halls, apartments and the RIT Inn unless they are flame resistant treated. Proof of treatment must to be present and produced upon request of inspectors.

Tips to Reduce Avoidable Fire Alarms

- Stay with any food you are cooking.
- Do not leave food cooking in microwave ovens unattended.
- Always use the stove top hood fan.
- Use a lid whenever possible.
- Use good judgment when selecting cooking temperatures.
- Close the bathroom door while running the shower and turn on the fan.



Fire Safety Rules/Fire Alarm /Evacuation Procedures

Fire Safety Rules in the Residence Halls, Apartments and RIT Inn & Conference Center

Cooking meals in student rooms is not allowed. All microwave ovens are prohibited in student rooms. Only microwave ovens purchased by RIT Housing Operations can be used in public areas. Hot air popcorn poppers, coffee pots, and hotpots with automatic shut offs are allowed in kitchens and lounges. Appliances that create excessive heat or are open-flame/open-element are prohibited in any area of residence halls and the RIT Inn. This includes, but is not limited to, toasters, toaster ovens, hot plates, George Foreman grills, heaters, gas grills, etc. Air conditioners are not allowed in student rooms. Refrigerators are allowed in students' rooms but are not to exceed 5 cubic feet. Violations of the policy related to candles, halogen lamps, torchiere-style lamps with halogen bulbs, and other fire hazards will result in the student being responsible for discarding the item immediately and at his/her cost. A violation will result in the student facing disciplinary action or termination of housing contract.

Carbon monoxide warning devices have been installed in select apartments which have furnaces contained in the unit. The sounding of a carbon monoxide alarm should be taken seriously and residents shall immediately vacate the apartment in accordance with RIT's policy and procedure. Tampering with a carbon monoxide alarm or any other emergency equipment is a criminal offense and the responsible person will face judicial action, restitution charges and/or termination of his/her housing contract. Strobe lights and smoke detectors located in RIT housing cannot be obstructed by any

material or object.

Fire Safety Rules in the Colony Manor Apartment Complex

The Town of Henrietta and RIT's terms and conditions strictly prohibit the use of Colony Manor basements for sleeping quarters or the storage of beds, mattresses, bed frames, futons, or hide-a-beds. Violators of this policy, which shall include all co-residents in the living unit, will be subject to judicial action which may result in removal from RIT housing and their participation in the housing selection process revoked. Due to the safety risk involved, RIT shall have the right to make random inspections of all Colony Manor basements.

Fire Alarm System Evacuation Procedures

In all campus buildings, including housing, when a fire alarm is activated, students and/or occupants must immediately vacate the building. Refusal to leave a building during a fire alarm, to cooperate with any reasonable request by an RIT official, or to produce identification upon request, is prohibited. This specific expectation is also included in Housing Operations' terms and conditions. When a fire alarm system activates, Resident Assistants (RA) and Public Safety personnel evacuate on-campus residential facilities and do not allow re-entry until the Henrietta Fire Department determines the cause of the alarm and deems the area to be safe. Staging areas are established for each fire alarm so that Public Safety personnel, Residence Life professional staff and fire department representatives can share evacuation information. Each RA attends fire safety training in the fall semester. Students with disabilities must contact RIT Disability Services, RIT Housing Operations, the Center for

Residence Life and Public Safety Department prior to moving in if assistance during a fire alarm is needed. Necessary precautions for safe departure will then be put in place for the student in case of fire alarm activation. Students whose mobility becomes impaired during their stay in RIT housing are required to notify RIT Disability Services, RIT Housing Operations, Center for Residence Life, and Public Safety so assistance during an emergency can be given, if needed, and their participation in the housing selection process revoked.

Evacuation Procedure

In the event of an evacuation, all occupants of the building will exit the area via the nearest unaffected exit quickly. Floor plans with evacuation routes are located in building lobbies and on the back of dorm room doors. Occupants should take time to familiarize themselves with the fire exits.

When Evacuating

- Use the stairs
- Move with deliberate speed
- Assist others as needed

When Evacuating DO NOT

- Use the elevators
- Rush or scream
- Re-enter the building until it's rendered safe

Safety Education and Training

Flammable Liquids And Chemicals

Possession in any RIT room/apartment/suite or floor/house, closet, hallway, or basement of any flammable liquids, propane tank, fireworks, explosive devices, canned or compressed gases, poisons, highly combustible substances, chemicals, etc., is prohibited. The possession or use of gasoline or electric powered vehicles or engines regardless of their state or dismantlement in RIT housing is likewise prohibited.

The Town of Henrietta prohibits the use of kerosene heaters within RIT housing. The use of exterior fireplaces (chimineas, patio fire pits, etc.) is also prohibited.

Material, curtains, flags, tapestries, as well as other hangings in your room/apartment/suite must be flame resistant or noncombustible and cannot exceed 20% of the aggregate area of the walls. Items may not cover outlets, panic buttons,

or fire safety equipment. In addition, hangings must be placed directly against a wall and should not interrupt the operation of the smoke detector. Nothing can be attached in any way to or on the ceiling.

Overseas Fire Safety

You must aggressively take responsibility for your safety. Think “contingency plan” and discuss it with your family and friends. Begin planning your escape from a fire as soon as you check into a hotel. Should a fire occur you can act without panic and without wasting time.

Stay in the most modern hotel and consider a U.S. chain. Request a lower floor, ideally the second or third. Selecting a room, no higher than the second floor enables you to jump to safety.

Procedures for evacuation, and policies regarding fire safety education and training programs provided to students, faculty, and staff:

Evacuation procedures are posted in all buildings near elevators, stair towers and exits. Fire safety education and training is available and given to faculty, staff and students through orientations, student requested programming events, disciplinary sanctions, and employee fire extinguisher training for Margaret’s House; Dining Services; Student Health; residential advisors and house managers. Fire safety information is available in RIT’s Terms and Conditions handbook and by contacting RIT’s Environmental Health and Safety Department. Monthly fire safety inspections are performed in all apartment complexes and Greek free standing houses. Yearly campus wide fire inspection is performed by the New York State Office of Fire Prevention and Control.

Regular Fire Extinguisher Training is provided to all applicable RIT employees.



2018 RIT Annual Fire Safety Report | Student Housing

A daily log is maintained, recording all fires at on-campus student housing facilities, including the nature, date, time, and general location of each fire.

The log is available for review between 8:30 a.m. and 5:00 p.m. Monday - Friday at the Public Safety Department offices located on the first floor of Grace Watson Hall.

LOCATION	TOTAL FIRE IN EACH BUILDING	DATE	TIME	CAUSE	NUMBER OF INJURIES REQUIRING TREATMENT AT A MEDICAL FACILITY	DEATHS	VALUE OF PROPERTY DAMAGE
Colony Manor 70 Colony Manor Dr.	1	4/5/18	22:10	Food debris under burner ignited	0	0	\$0-99
University Commons 773 Reynolds Dr.	1	2/13/18	21:07	Stove plug and outlet burned out	0	0	\$414
University Commons 174 Reynolds Dr.	1	4/19/18	14:26	Food debris under burner ignited	0	0	\$0-99
University Commons 216 Reynolds Dr.	1	10/25/18	20:14	Pan left on stove caught fire. FE used by resident	0	0	\$0-99
Sol Heumann Hall Lomb Memorial Dr.	1	1/21/18	9:35	Greecee & debris caught fire in oven, unattended	0	0	\$0-99
Kate Gleason Hall Lomb Memorial Dr.	1	7/31/18	16:52	Science experiment sugar snake. Campers	0	0	\$0-99
RIT Inn W. Henrietta Rd.	1	5/11/18	4:16	Non-member let candle burn down	0	0	\$2,200
Greek Housing 624 Kimball Dr.	1	4/26/18	10:39	Fire in bathroom caused by resident w/ butane torch	0	0	\$9,753
Raquet Club Fariwood Drive	0	NA	NA	NA	NA	NA	NA
Global Village Reynolds Dr	0	NA	NA	NA	NA	NA	NA
Riverknoll Kimball Dr	0	NA	NA	NA	NA	NA	NA
Perkins Green Perkins Green	0	NA	NA	NA	NA	NA	NA
Residence Halls A, B, C Lomb Memoiral Dr.	0	NA	NA	NA	NA	NA	NA
Baker Hall Lomb Memorial Dr.	0	NA	NA	NA	NA	NA	NA
Nathaniel Rochester Hall Lomb Memorial Dr.	0	NA	NA	NA	NA	NA	NA
Colby Hall Lomb Memorial Dr.	0	NA	NA	NA	NA	NA	NA
Gibson Hall Lomb Memorial Dr.	0	NA	NA	NA	NA	NA	NA
Ellingson, Peterson, Res Hall D Lomb Memorial Dr.	0	NA	NA	NA	NA	NA	NA
Fish Hall Lomb Memorial Dr.	0	NA	NA	NA	NA	NA	NA



Basic Emergency Actions

IN AN EMERGENCY, CONTACT RIT PUBLIC SAFETY

Rochester Institute of Technology

(585) 475-3333

(585) 205-8333 (TEXT)

FIRE

Evacuate building using nearest available stairwell or exit

- If alarm not sounding, pull red fire alarm on your way out if possible
- Close doors on your way out if possible
- Assist mobility impaired persons
- Move away from exits and entrances
- Stay at least 100 feet away from building or as directed

MEDICAL EMERGENCY

- Contact Public Safety, (585) 475-3333 if on campus or 911 if off campus
- Provide:
 - Your name and phone number
 - Your location
 - Nature of the emergency
 - Stay on the phone
- Render first aid, if trained
- Do not move victim unless in danger

SEVERE WEATHER

- Move indoors if possible
- INDOORS**
- Go to lowest level of building
 - Stay away from windows
- OUTDOORS**
- Lay in low area away from power lines, trees and buildings
 - Cover your head

HAZARDOUS MATERIALS EMERGENCY

- Contact Public Safety, (585) 475-3333
- Stay away from area
- Do not come in contact with people who have been exposed
- If directed to shelter-in-place:
 - Cover mouth with damp cloth
 - Move to higher floor levels
 - Close windows, turn off fans
 - Place wet towels in cracks under doors

BOMB THREAT

SUSPICIOUS OBJECT

- Do not touch or move the object
- Do not use cell phones in the immediate area
- Clear the area
- Contact Public Safety, (585) 475-3333

WRITTEN THREAT

- Handle the written threat as little as possible
- Note the date, time & location you received the written threat
- Provide the written threat or forward e-mail to Public Safety

TELEPHONE THREAT

- Check caller ID on phone (if possible)
- Note date and time of the call
- Ask the caller where, when, how and why the bomb was placed
- Note the age, gender, speech pattern, attitude, background noise, accent, etc of the caller
- Contact Public Safety, (585) 475-3333

DISRUPTIVE OR UNSAFE BEHAVIOR

SUSPICIOUS BEHAVIOR

- Do not confront subject
- Contact Public Safety, (585) 475-3333

ARMED INTRUDER

- Evacuate (if you can do so safely)

- Contact Public Safety, (585) 475-3333, and/or 911:
 - Provide location
 - Number of people at location
 - Number & type of injuries (if any)
 - Assailant information

- Hide
 - Lock or barricade doors
 - Turn off lights
 - Close blinds, block windows
 - Turn off radios and computer monitors
 - Keep calm and quiet
 - Take cover and stay out of sight

- Silence cell phones if not communicating with authorities
- Fight (as a last resort)
 - Attack the intruder
 - Used improvised weapons
 - Commit to your actions

RIT

Title IX

Sexual Misconduct RESPONSE

If an incident of sexual misconduct occurs, the following options and resources are available to you.

- **Contact RIT Ethics and Compliance Hotline**
Anonymous Report
866-294-9358

**I WANT TO
REMAIN
ANONYMOUS**

- **Visit a Confidential Office**
 - Center for Women and Gender
 - Student Health Center
 - Counseling Center
 - NTID Counseling & Advising Services
 - Center for Religious Life
 - Ombuds Office



**I NEED
IMMEDIATE
ASSISTANCE**

- **Contact Public Safety**
Call 585-475-3333
or Text 585-205-8333
- **Call 911**
- **Go to Strong Memorial Hospital**
(Area Safe Center)
- **Go to Student Health**
- **Contact CARES** 585-295-3533
(Campus Advocacy Response & Support)

TITLE IX INCLUDES

Dating & Domestic Violence
Gender Discrimination
Sexual Harassment
Sexual Violence
Sexual Assault
Stalking



**I WANT TO
REPORT AN
INCIDENT**

- **Contact the Title IX Coordinator**
or a Deputy Coordinator,
or file a report online at RITTitleIX
- **Contact Public Safety**
Call 585-475-3333 or
Text 585-205-8333
- **Call 911**
- **Tell any Responsible Employee**
(all employees other than
confidential offices)



**I WANT
CONFIDENTIAL
SUPPORT**

Visit www.rit.edu/titleix for more information

Title IX

TO REPORT A VIOLATION OF YOUR RIGHTS, CONTACT A TITLE IX TEAM MEMBER:

STACY DEROOY

Director of Title IX and Clery Compliance
Office of Compliance and Ethics
Title IX Coordinator
Eastman Building 6th Floor
585-475-7158
stacy.derooy@rit.edu

AMY STORNELLO

NTID Deputy Title IX Coordinator
Director of SVP
LBJ Room 2647
585-270-1797 (Text)
585-391-9990 (Video Phone)
amy.stornello@rit.edu

CATHERINE FARINA

Title IX Investigator
Compliance Coordinator
Eastman Building, 6th Floor
585-475-2297
cmfcae@rit.edu

DARCI LANE-WILLIAMS

Assistant Director of Title IX and Clery Compliance
Office of Compliance and Ethics
Eastman Building 6th Floor
585-475-7383
drlwom@rit.edu

JAMES MACCHIANO

Director of Multicultural Center for Academic Success of Diversity and Inclusion
Deputy Title IX Coordinator
SAU Room 2308
585-475-2290
jjmcs@rit.edu

Additional Resources for Support, Counseling and Advocacy

Internal Resources

- **RIT Public Safety**
585-475-2853 or 585-205-8333 (Text)
rit.edu/fa/publicsafety/
- **Center for Student Conduct and Conflict Resolution**
585-475-5662
rit.edu/studentconduct/
- **RIT Human Resources**
585-475-2424
rit.edu/humanresources/
- **RIT Advocacy Program**
585-475-7668
rit.edu/studentconduct/advocacy.php
- **Student Government Services/Legal Advice**
585-475-4043
sg.rit.edu/services
- **Student Financial Services**
585-475-6186
rit.edu/fa/sfs/about-us
- **International Student Services**
585-475-6943
rit.edu/studentaffairs/iss/

Confidential Resources

- **RIT Counseling & Psychological Services**
585-475-2261
rit.edu/counseling/
- **RIT Student Health Center**
585-475-2255
rit.edu/studentaffairs/studenthealth
- **RIT Center for Women and Gender/ CARES**
585-475-7464
rit.edu/womenandgender/
- **RIT Ombuds Office**
585-475-7200 or 585-475-2876
rit.edu/ombuds/contact-us
- **RIT Spirituality and Religious Life**
585-475-2137
rit.edu/studentaffairs/religion
- **NTID Counseling and Academic Advising Services**
585-475-6468 or 585-286-4854
ntid.rit.edu/caas

External Resources

- **Willow Center**
24-Hour Hotline 585-232-7353
willowcenterny.org/
- **Lifeline**
585-275-5151
www2.monroecounty.gov/mh-emergency-resources
- **Monroe County Sheriff's Office**
585-753-4178
monroecounty.gov/sheriff
- **IGNITE (Formerly Advocacy Services for Deaf Abused Victims)**
585-286-2713
DeafIGNITE@gmail.com
deafignite.org
- **NYS Police Sexual Assault Hotline**
844-845-7269
- **RESTORE**
24 Hour Hotline 585-546-2777
plannedparenthood.org/
plannedparenthood-central-western-new-york/restore

IMPORTANT PHONE NUMBERS

EMERGENCY (585) 475-3333

General Information (585) 475-2853

Public Safety Text (585) 205-8333 (TEXT)

Sexual Assault Info Hotline

(24 HOUR) (585) 546-2777

Transportation (585) 475-7300

Parking Office (585) 475-2074

Public Safety Escort Services (585) 475-2853

Alarm / Communications Service

Manager Linda Fuller-Durfee (585) 475-2853

..... lfdcps@rit.edu

Field Supervisors (585) 475-2038

IMPORTANT INTERNET ADDRESSES

Public Safety's Website: finweb.rit.edu/publicsafety

Preventing Identity Theft:

www.rit.edu/security/sites/rit.edu.security/files/Brochure%20-%20Avoiding%20Identity%20Theft%20Online_0.pdf

The NYS Sex Offender Registry Information:

www.criminaljustice.ny.gov/nsor/

Confidential Tipline:

www.rit.edu/fa/publicsafety/forms/tipline

RIT Emergency Preparedness:

www.rit.edu/fa/publicsafety/preparedness

Department of State Travel Advisory:

<https://travel.state.gov/content/passports/en/alertswarnings.html>

Bicycle lock Information:

www.kryptonitelock.com/

National Bike Registry:

www.nationalbikeregistry.com/

Bike Safety Information: www.bicyclesafe.com/





EMERGENCY..... (585) 475-3333
General Information (585) 475-2853
Public Safety Text (585) 205-8333
Sexual Assault
Info Hotline (24 HOURS).....(585) 546-2777
Transportation..... (585) 475-7300
Parking Office(585) 475-2074
Mobile Escort Service (585) 475-2853
Field Supervisors (585) 475-2038
RIT Emergency Information emergency.rit.edu