

*Official*  
SOUVENIR PROGRAM  
1938 NATIONAL CONVENTION



SEPT. 19-20-21-22  
LOS ANGELES



*More than ever* ...**THE PLACE TO GO...**



*West Coast Theatres*



★ *Entertainment* HEADQUARTERS FOR THE  
AMERICAN LEGION IN LOS ANGELES ★★★

# CALIFORNIA JOINS IN INVITING THE AMERICAN LEGION NATIONAL CONVENTION TO SAN FRANCISCO IN '43



OFFICE OF THE MAYOR  
SAN FRANCISCO

TO the Members of the American Legion,  
In Convention assembled,  
San Angeles, California.

Greeting:

With the full cooperation of your 1938 host city, Los Angeles, and other cities of the west, San Francisco extends a hearty invitation to you to come to the Pacific Coast - to San Francisco - in 1943.

The Bay West is united in the hope that the National American Legion will recognize and honor our region by meeting along the Pacific at least once every five years. Besides marking the end of such a five year span, 1943 will mark the twentieth anniversary of the year in which the Legion first marched down Market Street, toward the Presidio, headquarters for the U. S. Army's 9th Corps Area, and enjoyed countless other attractions of the City by the Golden Gate. Thus, it is particularly fitting that San Francisco should thrill to the presence of Legionnaires again in 1943.

I need not assure you that you will find ample accommodation, plenty to do and a lot to see in friendly, cosmopolitan San Francisco. Nor, I am sure, do I have to remind you that San Francisco, widely recognized as "The Ideal Convention City", is more than ever during the month of your convention, since it is the coolest summer city in the United States.

Who I, then, and all my fellow San Franciscans, wish that your 1943 convention here may be replete with progress and good cheer, and may so promise you that the same welcome the West always extends to you when you visit the West again - and left to hope it will be San Francisco, 1943.

*Angela J. Fossin*  
Mayor

OFFICE OF THE MAYOR  
SAN FRANCISCO

Telephone UNWard 4322

**SAN FRANCISCO COUNTY COUNCIL**  
**THE AMERICAN LEGION**  
**THE CITY OF SAN FRANCISCO**  
**WORLD WAR MEMORIAL BUILDING**  
**War Memorial**  
**SAN FRANCISCO, CALIFORNIA**

Comrades:

The San Francisco County Council of the American Legion, eager again to play host to the National American Legion, is extending a formal invitation at this 1943 convention that you return to the Pacific Coast - to San Francisco - in 1943.

We trust you will accept our sincere invitation. If you do, we'll promise that you'll be on an unforgettable furlough from the everyday march every minute of your time in this beautiful and exciting City by the Golden Gate.

San Francisco has an unequalled list of attractions to offer you, many which are its distinctive appeal, excellent climate, splendid meeting and hotel facilities. But no attraction, we feel, will appeal to you more than the hospitality of San Francisco Legionnaires, and of all San Francisco. You will be honored guests - and the heart and keys of this cosmopolitan, colorful city will be yours throughout your stay, and thereafter.

May the West for its loyal support of conventions held in other regions - say with us "Something to See in '43, San Francisco".

**SAN FRANCISCO COUNTY COUNCIL**  
**THE AMERICAN LEGION**  
*Edward J. Hanley*  
Edward Hanley, Commanding

Members of the National American Legion  
1943 Convention  
Los Angeles, California

OFFICE OF THE MAYOR  
CITY HALL  
LOS ANGELES, CALIFORNIA  
September 7, 1940

Officers and Members  
of the American Legion  
in National Convention Assembled  
Los Angeles, California.

Distinguished Guests:

Los Angeles is happy to encourage the invitation of our sister metropolis, San Francisco, for the American Legion to convene in the City by the Golden Gate in 1943.

We feel that you should partake of the hospitality of the West more often. San Francisco is a city far-remembered for its friendliness and its charm. A convention of the American Legion in that City would be a delightful experience to every Legionnaire in attendance.

So we hope you will meet in San Francisco in 1943, and that your visit to California on that occasion will give you another opportunity to visit Los Angeles.

Cordially yours,  
*Frank S. Swan*  
Mayor

OFFICE OF THE MAYOR  
SAN FRANCISCO

SAN FRANCISCO BAY SCENE



SAN FRANCISCO'S WAR MEMORIAL

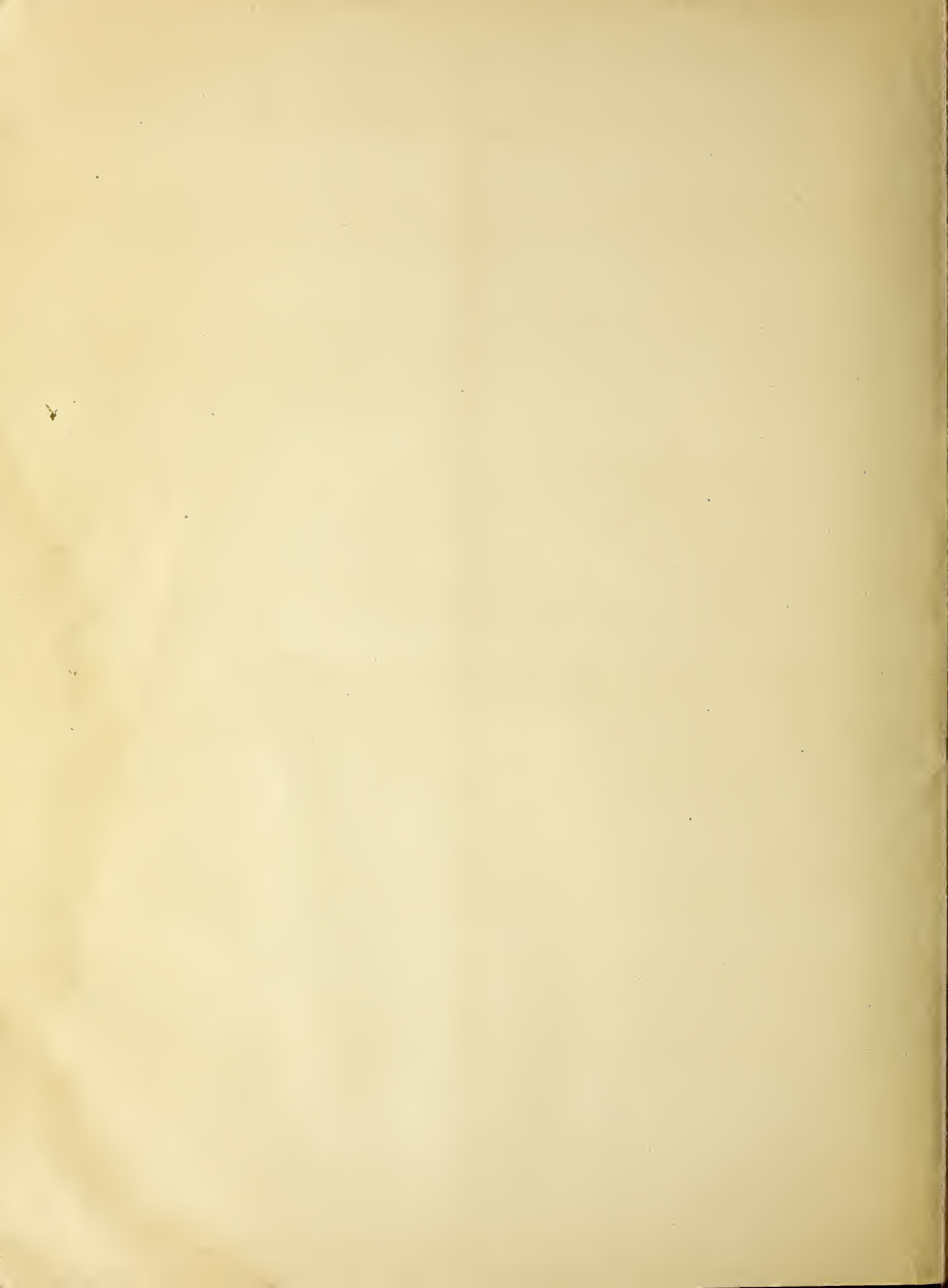


CHINATOWN



JAPANESE TEA GARDEN—GOLDEN GATE PARK





**Preamble to the Constitution  
of the AMERICAN LEGION**

**F**OR God and country, we associate ourselves together for the following purposes: To uphold and defend the Constitution of the United States of America; to maintain law and order; to foster and perpetuate a one hundred per cent Americanism; to preserve the memories and incidents of our association in the Great War; to inculcate a sense of individual obligation to the community, state and nation; to combat the autocracy of both the classes and the masses; to make right the master of earth; to promote peace and good will on the principles of justice, freedom and democracy; to consecrate and sanctify our comradeship by our devotion to mutual helpfulness.

**TWENTIETH ANNUAL NATIONAL CONVENTION  
THE AMERICAN LEGION**

LOS ANGELES • CALIFORNIA

EIGHTEENTH ANNUAL NATIONAL CONVENTION  
AMERICAN LEGION AUXILIARY

NINETEENTH ANNUAL PROMENADE NATIONALE  
LA SOCIETE DES

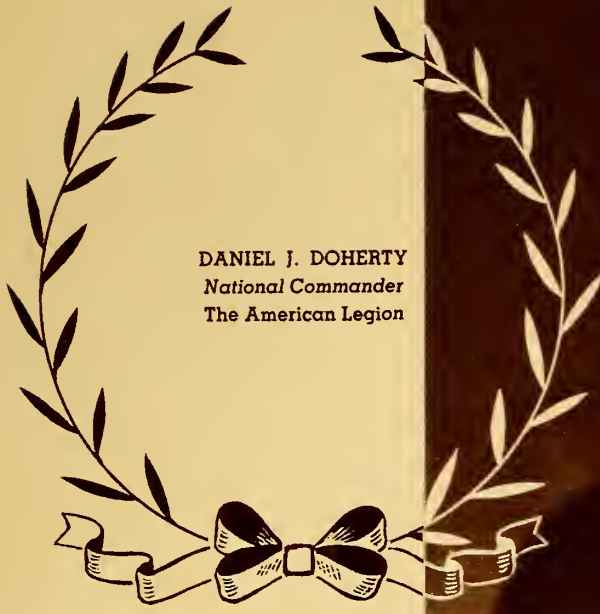
QUARANTE HOMMES ET HUIT CHEVAUX

SEVENTEENTH ANNUAL MARCHE NATIONALE  
LA BOUTIQUE DES

HUIT CHAPEAUX ET QUARANTE FEMMES

**SEPTEMBER 19, 20, 21, 22, NINETEEN THIRTY-EIGHT**





DANIEL J. DOHERTY  
National Commander  
The American Legion



THE AMERICAN LEGION

OFFICE OF THE NATIONAL COMMANDER  
INDIANAPOLIS, INDIANA

To my comrades of  
The American Legion:

We meet in this fine City of Los Angeles for the purpose of conducting our 20th Annual National Convention. Through the medium of this official program, I am happy to extend to you a cordial greeting.

It is my sincere hope that you will thoroughly enjoy the varied activities of the Convention and return safely to your homes.

Our joint efforts throughout this Legion year have redounded to the welfare of our beloved country and materially aided in the rehabilitation of those who are the victims of the ravages of war.

In our conduct and deliberations, may we, in this National Convention, give continued exemplification of the great principles and purposes of The American Legion.

Yours sincerely,

  
DANIEL J. DOHERTY  
National Commander

*While You're Here*

## SEE ALL OF LOS ANGELES COUNTY

WELCOME! And while you're here, why not take some extra time to see all of the fascinating sights in Los Angeles County. These pictures here are only a sample of what's going on and what you can do to make your visit a real vacation.



EVEN OUR INDUSTRIES are fascinating: the excitement of the movie and radio capital, the famous oil fields, refineries, miles of citrus trees. Include at least one visit to Los Angeles Harbor to see ships from all over the world.



BEACH FUN is just one of the many sports you'll find within a short distance of the City. Play golf on excellent courses, go riding, sailboating, enjoy tennis, badminton, sun bathing, deep-sea fishing.



NIGHT LIFE in Los Angeles County is always exciting. World-famous night clubs and ballrooms. Movie stars and celebrated entertainers.



MOUNTAIN trails offer you thrilling views of Los Angeles County. Or drive along skyline boulevards. Visit the Planetarium in Griffith Park and the observatory on Mt. Wilson.




OLD MEXICO hides out in Olvera Street. Hear guitars and castanets, eat Mexican food, bargain for sandals and sombreros.

## LOS ANGELES COUNTY





His Excellency  
FRANK F. MERRIAM  
The Governor of California

  
State of California  
GOVERNOR'S OFFICE  
SACRAMENTO

FRANK F. MERRIAM  
GOVERNOR

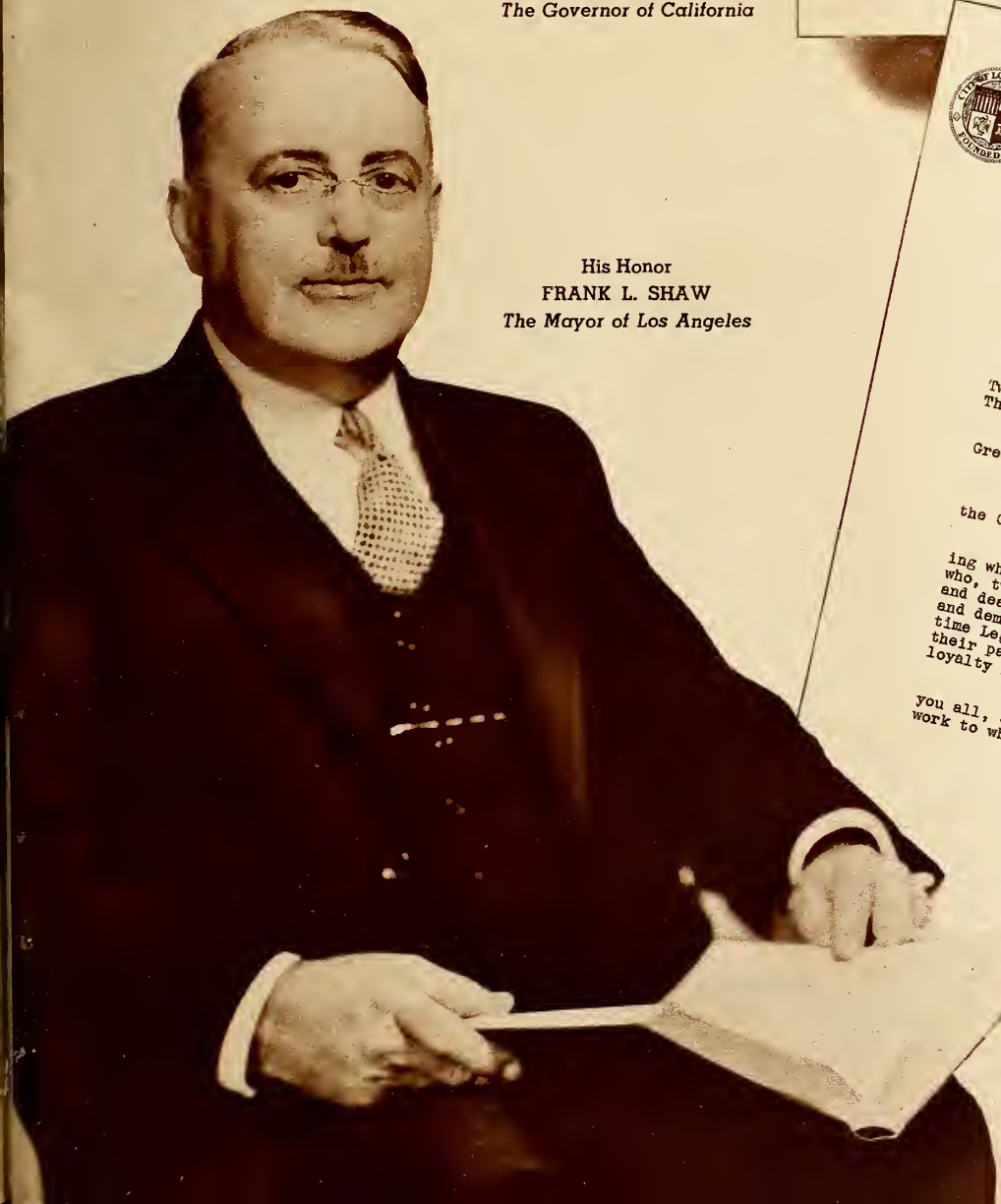
To the Members of the American Legion:

I am happy to join with the California Legionnaires in extending my personal greetings and a most cordial welcome to the delegates and friends of the American Legion, its Auxiliaries and affiliates, and all others who are privileged to be in attendance at the 1938 Convention in Los Angeles, commemorating the Twenty-first Anniversary of America's entry into the World War.


May the same aggressive spirit, which carried our soldiers over the top to victories in the battles of 1917 and 1918, be kept awake in the mind and heart of each Legionnaire, and serve as an inspiration to all of us to be ever watchful and vigilant in protecting those rights of freedom and democracy for which each comrade so nobly fought.

Again, I welcome you one and all, and wish for you an instructive and enlightening convention and a most interesting and pleasant visit in California.

Cordially and sincerely,  
*Frank F. Merriam*  
Governor of California



His Honor  
FRANK L. SHAW  
The Mayor of Los Angeles

  
OFFICE OF THE MAYOR  
CITY HALL  
LOS ANGELES, CALIFORNIA

FRANK L. SHAW  
MAYOR

Twentieth Annual National Convention  
The American Legion

Greetings:

We extend to you the official welcome of the City of Los Angeles!

We are proud to honor this annual gathering which represents the great organization of those who, twenty years ago, were in the midst of a life and death struggle to defend the ideals of liberty and democracy. In the score of years since that time Legionnaires have distinguished themselves for their patriotism in peace no less than for their loyalty in war.

May your Convention be a happy occasion for you all, and may it advance and strengthen the great work to which you are dedicated.

Cordially yours,  
*Frank L. Shaw*  
MAYOR

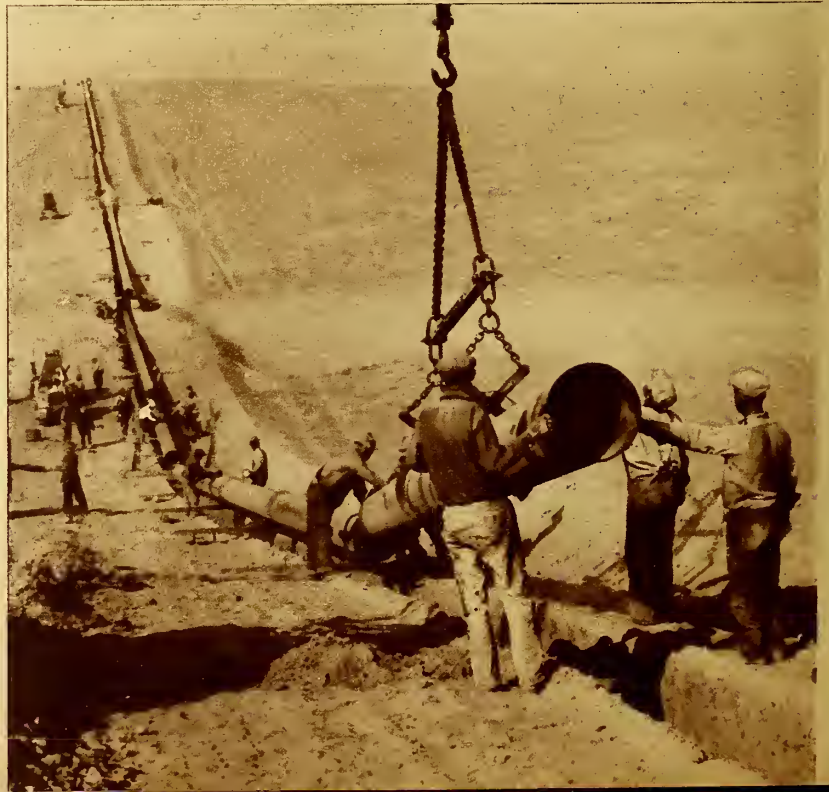


Fresh Dairy Products are distributed for Los Angeles from this modern, sanitary plant, operated by the **CARNATION COMPANY**—famous for its traditions of quality.

Adrienne Allen, lovely vaudeville starlet, gets right behind the counter at a Sontag Fountain Grill and serves a Hawaiian Swing Sundae to Al Lyons, popular Orpheum Maestro. Both of them know that **SONTAG FOUNTAIN GRILLS** are "tops" when it comes to something cooling and refreshing.



Home Office, **FARMERS AUTOMOBILE INTER-INSURANCE EXCHANGE**, Truck Insurance Exchange, 4680 Wilshire Blvd., Los Angeles, Calif. Nation Wide Service.



Completing a link in the great network of pipelines that serves Southern California with **NATURAL GAS**—the quick, clean economical fuel for home and industry.

**NATIONAL  
OFFICERS  
OF THE  
AMERICAN  
LEGION**



**HARRY M. JOHNSON**  
*National Vice Commander*



**PHIL CONLEY**  
*National Vice Commander*



**DRURY M. PHILLIPS**  
*National Vice Commander*



**JAMES F. DANIEL, JR.**  
*National Vice Commander*



**JAMES R. MAHAFFY**  
*National Vice Commander*



**REV. FRANK J. LAWLER**  
*National Chaplain*



**JOHN RUDDICK**  
*National Treasurer*



**RALPH B. GREGG**  
*National Judge Advocate*



**THOMAS M. OWEN, JR.**  
*National Historian*



**FRANK E. SAMUEL**  
*National Adjutant*



**VIC MACKENZIE**  
*Director of Conventions*

# COLEMAN BROWN

**PICTURE**

**Are proud of the  
and its worthy**

**STUDIOS**

**American Legion  
accomplishments**





**DREW A. BERNARD**  
*Executive Vice President*



**JOHN R. QUINN**  
*President*



**C. J. TURNER**  
*Chairman of the Board of Directors*



**GEN. WALTER P. STORY**  
*Vice President*



**FRANK SIMPSON, JR.**  
*Vice Chairman of the Board of Directors*



**P. A. YOUNG**  
*Vice President*



**E. W. CASON**  
*Vice President*



**H. L. SUTHERLAND**  
*Treasurer*



**D. W. PONTIUS**  
*Vice President*



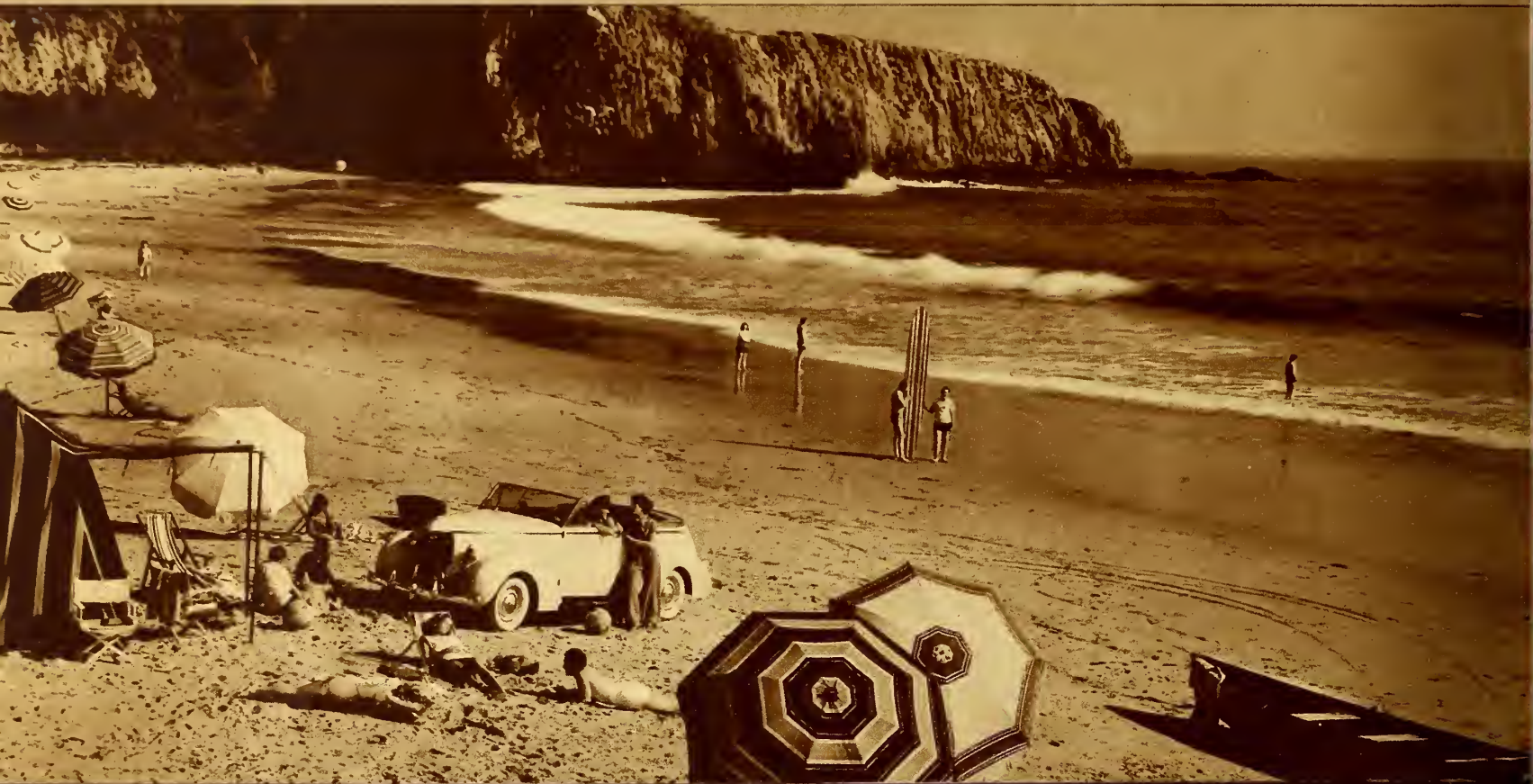
**LOUIS VAN IERSEL**  
*Vice President*



**DEE HOLDER**  
*Secretary*

**OFFICERS OF THE  
1938 AMERICAN LEGION CONVENTION  
CORPORATION**

Wherever You Go This Summer... YOU'LL GET  
MORE ANTI-KNOCK MILEAGE FROM 76 GASOLINE



PRODUCT OF UNION OIL COMPANY

Greetings  
to all  
Legionnaires

and Affiliated Organizations  
attending their  
National Conventions in Los Angeles

from the  
136 World War Veterans  
working for and with

**Borden's**  
DAIRY DELIVERY COMPANY  
of California  
in the production and distribution of  
QUALITY DAIRY PRODUCTS



if we could  
move a  
**MARIPOSA  
BIG TREE**  
into  
**Wall Street...**

This is how it would look... a grizzled  
giant of 3,000 years, blocking traffic in  
the street known 'round the world.

Yosemite has 600 of these stately land-  
marks, many of them larger than the  
Wawona Tree shown here. Then the family  
of sky-high waterfalls... Glacier Point's  
mammoth nightly firefall... massive El  
Capitan... brooding, mile-high Half  
Dome... all ranged in startling panorama  
to complete your California trip.

Get the full picture today from your  
nearest travel or ticket agent, or the  
Yosemite office at 612 So. Olive St., Los  
Angeles—phone VAndike 2396. You're  
near Yosemite now!

**YOSEMITE**  
makes every California Convention a  
vacation. Overnight from Los Angeles.

# DIRECTORS OF THE 1938 AMERICAN LEGION CONVENTION CORPORATION



**E. "SNAPPER" INGRAM**  
Director and Chairman  
of Forty and Eight



**JOHN B. BROWNE**  
Director and  
Chairman of Publicity



**FRANK R. WISHON**  
Director and  
Executive Committeeman



**ROBERT L. BURNS**  
Director



**JAS. B. DUFFY**  
Director



**A. L. REDDICK**  
Director and  
Executive Committeeman



**JAMES S. HOWIE**  
Director and  
Executive Committeeman



**EDWARD BERNARD**  
Director and  
Executive Committeeman



**FRED W. BEETSON**  
Director



**H. P. MONAHAN**  
Director



**GENE E. MARCY**  
Director



**BRUCE A. FINDLAY**  
Director and  
Executive Committeeman



**TOM D. NELSON**  
Director and Chairman  
of Souvenir Program



**JOSEPH S. LONG**  
Director and  
Department Commander,  
California



**JOHN D. HOME**  
Director and  
Executive Committeeman



**ROBERT M. MCCURDY**  
Director



**H. L. NICHELSON**  
Director



**DR. RUSSELL W. STARR**  
Director



**JOHN C. DUNN**  
Director and  
Executive Committeeman



**TOM J. RICE**  
Director and  
Chairman of Concessions



**DICK DRUMMY**  
Director



**LARRY PRICE**  
Director



**ROGER W. JESSUP**  
Director



**MARION KOENIG**  
Director and Chairman  
of Ex-Service Women



**A. C. BERGHOFF**  
Director



**LEON V. MCCARDLE**  
Director,  
Executive Committeeman  
and Chairman of Finance



**ALFRED M. McLAREN**  
Director,  
Executive Committeeman  
and Chairman of Decorations



# Hail! LEGIONNAIRES !!

These scenes of rest and play were taken in the Ambassador's 22-acre Playground—but TWO minutes from Wilshire and Western, one of the world's busiest traffic corners; and 8 minutes from Los Angeles' financial center.

## The Los Angeles **AMBASSADOR** YOUR DE LUXE HOTEL

And Bungalows—with grounds providing Tennis, Golf, Crystal Pool and Cabana-studded Sun-tan Beach—also the home of

## THE WORLD-FAMOUS "COCOANUT GROVE"

Which presents more famous Orchestras and Musicians—and caters to more celebrities than any other center for Dining and Dancing on earth . . . Come far on an Ideal Vacation.

WRITE FOR RATES AND CHEF'S BOOK OF CALIFORNIA RECIPES



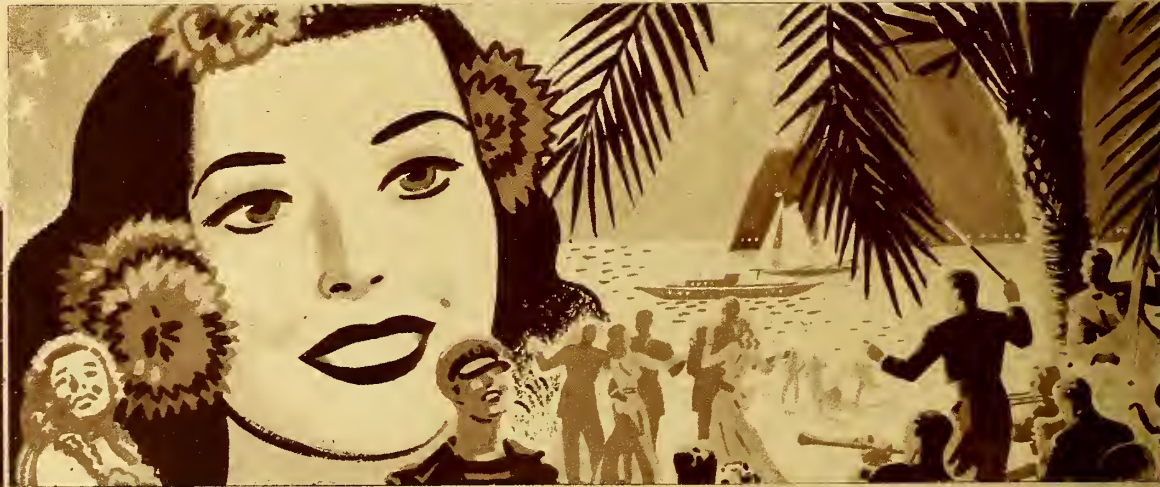
FINE Furniture, Oriental Rugs, Draperies, Carpets, Porch Furniture, Lamps, Gifts, Antiques, Bar, Bath and Closet Accessories.

## W. & J. SLOANE

Interior Decorators  
OXford 6251  
BRadshaw 23151  
Budget Terms

9536 WILSHIRE AT RODEO  
Across from the Brown Derby  
BEVERLY HILLS

Don't miss the thrill of an Island stay while you are in Southern California for the National Convention



## Here's how CATALINA assures Legionnaires of a wonderful time!

Here on romantic Catalina, you get just the change and fun you're looking for to make your stay in Southern California pay you extra dividends in enjoyment. On this carefree Island, out in the blue Pacific, you enjoy the stimulation of all your favorite sports and diversions. Like thousands of others, you thrill to the scenic beauty of ocean and mountains, too; find perfect pleasure and relaxation in this fascinating atmosphere of old-world charm. It's like being in

another world. Your friends will see the good it's done you—envy the fun you've had.

Part of the thrill of Catalina is the ocean voyage through busy Los Angeles Harbor, past the U. S. Fleet at anchor and across the 26-mile channel to the Island. Daily sailings by large ocean steamer or swift amphibian plane. Plan now for a stay at famous Catalina. It's the one place no Legionnaire can afford to miss!

## Santa CATALINA Island

Use Catalina coupon to secure reduced round trip fare to Santa Catalina Island. Exchange at Catalina booth, National Headquarters, Los Angeles. For additional Catalina information, call MADison 1151, Los Angeles.





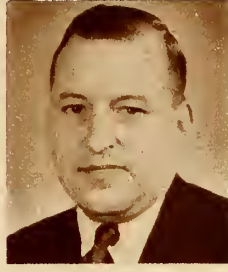
# COMMITTEE CHAIRMEN OF 1938 AMERICAN LEGION CONVENTION CORPORATION



**GEORGE E. McCLAY**  
*Sight-Seeing Tours Committee*



**EDDIE MARTIN**  
*Ticket Committee*



**A. F. OSTERLOH, JR.**  
*Liaison Committee*



**CHAS. F. SEBASTIAN**  
*First Aid Committee*



**AL. BLANCHARD**  
*Halls and Seating Committee*



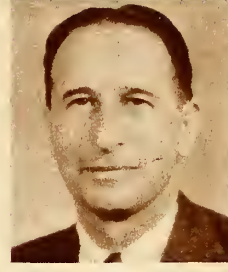
**WM. A. KNOST**  
*Program Committee*



**GEO. W. BURLESON**  
*Colored Activities Committee*



**HARRY E. DEFTY**  
*Badges Committee*



**NORMAN "PAT" LYON**  
*Air Activities Committee*



**DON P. YOUNG**  
*Auto Information Committee*



**RALPH O. CHICK**  
*Grandstand Committee*



**JUDGE ROBERT H. SCOTT**  
*Boy Scouts Committee*



**MARTHA S. DECKER**  
*Auxiliary Committee*



**JOHN J. FOX**  
*Sons of American Legion Committee*



**C. V. MEANS**  
*Transportation Committee*



**MARVIN KEYES**  
*Telephone Communications Committee*



**LOUIS GREENBAUM**  
*Legal Committee*



**CAPTAIN C. D. BAYLIS**  
*Service Committee*



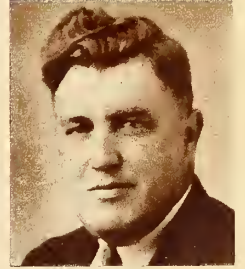
**ROBERT L. STEVENS**  
*Housing Committee*



**BRUCE MERMAN**  
*Religious and Patriotic Services Committee*



**ROBERT MITCHELL**  
*Contests Committee*



**LEO A. STROME**  
*Information Committee*



**JACK L. WARNER**  
*Motion Pictures Committee*



**C. K. "JACK" STEELE**  
*National Commanders' Dinner Committee*



**A. BERNARD SHORE**  
*Trophies Committee*



**JOSEPH M. LOWERY**  
*Audit Committee*



**DANA HOGAN**  
*Distinguished Guests Committee*



**S. A. CAPODICE**  
*Registration Committee*



**HUGO HARRIS**  
*Entertainment Committee*



**FRANK A. NANCE**  
*Funeral Committee*



**ADOLPH N. SUTRO**  
*Reunions Committee*



**ROY TOWNE**  
*Communications Committee*



Best Wishes  
Shirley Temple



MRS. MALCOLM DOUGLAS, *National President*



MRS. ALLEN S. HATHAWAY  
*National Chaplain*



MRS. GWENDOLYN WIGGIN MacDOWELL  
*National Secretary*



MRS. LOUIS LEMSTRA  
*National Vice President  
Central Division*



MRS. GEORGE A. COLE  
*National Vice President  
Western Division*



MRS. ANDREW LAWO  
*National Vice President  
Southern Division*



MRS. HALSEY D. CORY  
*National Vice President  
Northwestern Division*



MRS. BENJAMIN F. ADAMS  
*National Vice President  
Eastern Division*



MRS. CECILIA WENZ  
*National Treasurer*



MRS. EVA M. SHERBURNE  
*National Historian*

**NATIONAL OFFICERS  
OF THE  
AMERICAN LEGION  
AUXILIARY**



Enter Here  
for  
Greater  
Savings



Through this doorway, you enter "G.H.Q." for all of the more than 200 conveniently located Western Auto Supply Company stores throughout the West... At all these "Western Auto" stores, General Order No. 1 is—"The Customer Must be Satisfied"!

*Everything For Your Car at a Saving*

**Western Auto Supply Co.**  
*1100 South Grand Ave., Los Angeles*

# WELCOME LEGIONNAIRES! TO LOS ANGELES

WE'RE at your service always! And here's a tip worth taking—Standard Gasoline and RPM Motor Oil are Unsurpassed for Western driving! Stop in at Standard Stations, Authorized Distributors and Standard Oil Dealers for these fine products, and for many other outstanding motoring necessities. They're available throughout the Pacific West!

And while you're here, let Standard Service Men lubricate your car, and show

you those extra services that have made so many Western motorists happy Standard customers. Be sure to ask about Standard Oil Company of California's new National Credit Card, too! It's a travel ticket—good from coast to coast! Wherever you go, you'll always be near a service station at which you may use this Credit Card to fill your motoring needs. Why not take advantage of this traveling convenience?



**STANDARD OIL COMPANY OF CALIFORNIA**

# NATIONAL OFFICERS,

## LA SOCIETE DES 40 HOMMES ET 8 CHEVAUX



N. CARL NIELSEN  
*Commissaire Intendant Nationale*



FRED G. FRASER  
*Chef de Chemin de Fer*



C. W. ARDERY  
*Correspondant Nationale*



TOM ESTABROOK  
*Conducteur Nationale*



JOHN PENNINGTON  
*Grand Chef de Gare*



E. "SNAPPER" INGRAM  
*Chairman 19th Annual Promenade Nationale*

# OFFICERS,

## LA BOTIQUE DES HUIT CHAPEAUX ET QUARANTE FEMMES



BEATRICE TRUMBULL  
*Chairman 17th Annual Marche Nationale*



MRS. MARY C. HAWS  
*Le Chapeau Nationale*

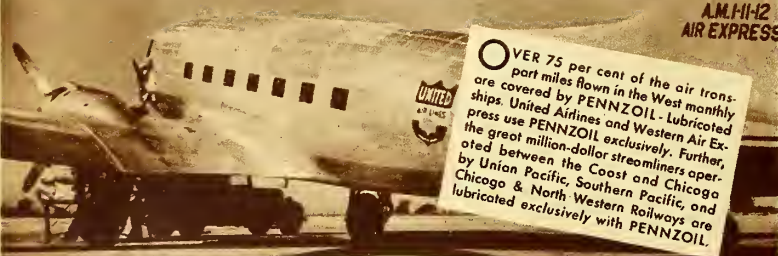


MRS. PAULINE RAIRDON  
*Le Secretaire-Caissiere Nationale*

YOU GUYS ARE NOISIER THAN ME



**FIRST CHOICE OF EXPERTS**



U.S. MAIL  
A.M. 11-12  
AIR EXPRESS

OVER 75 per cent of the air transport miles flown in the West monthly are covered by PENNZOIL - Lubricated by United Airlines and Western Air Express use PENNZOIL exclusively. Further, the great million-dollar streamliners operated between the Coast and Chicago by Union Pacific, Southern Pacific, Chicago & North Western Railways are lubricated exclusively with PENNZOIL.



IDEAL FOR YOUR CAR - AT INDEPENDENT DEALERS EVERYWHERE



**Arden**  
**27 Flavorseal MILK**

YELLOW CAP \*\*\* Rich  
GREEN CAP \*\* Extra Rich  
RED CAP \* Super-rich



Superior quality . . . superior flavor . . . completely safeguarded with Flavorseal, the amazing new bottle closure developed by Arden. Flavorseal not only protects the pouring lip — it also covers well down over the neck, thereby eliminating any possibility of contamination from dust, moisture or human handling. Try Arden 27 Milk . . . the milk that won first prize at the California State Fair for the last four years. At food stores or home delivered.

**SUNFREZETT**



A new super-quality ice cream by Arden, in the unique new octagon carton. Designed for easy uniform slicing. Sunfrezett is double wrapped and entirely machine filled. Serves four generous portions. At your dealer 15c.

**ARDEN FARMS, INC.**

1900 W. Slauson Avenue • Los Angeles, California • Vermont 0061

# ENTERTAINMENT FEATURES OF CONVENTION

## SATURDAY—September 17th

**MUNICIPAL SONG FESTIVAL TO COMMEMORATE CONSTITUTION DAY**—Griffith Park Theater—8:00 P.M. Los Angeles Civic Music Groups present this, in cooperation with the American Legion National Convention, sponsored by the City of Los Angeles Department of Playground and Recreation. Take "S" or "R" car going west on Seventh Street to Vermont Avenue where transfer is made to "V" car going North—ride to end of line, and take bus there which takes you direct to Greek Theater.

**THEODORE KOSLOFF BALLET CONCERT**—Symphony concert and four ballets—and four celebrated conductors—at Hollywood Bowl. Registration ticket plus \$1.50 entitles holder to two \$1.50 tickets in reserved section. Take Pacific Electric Trains at 423 South Hill Street.

## SUNDAY—September 18th

2:30 P.M.—**POLO GAME**, Will Rogers Memorial Field, Uplifters Club, Rustic Canyon, Santa Monica. American Legion Team versus Motion Picture Team. Admission 50c plus Federal tax. Nine miles west of Beverly Hills on Sunset Boulevard. Entertainment will consist of Polo game, drag hunt, hedge and water jumps, trick riding, etc. American Legion Team: Captain Wesley White, Dr. Wm. Branch, Tom Guy and Russ Havenstrite. Motion Picture Team: Walter Wanger, Frank Borzage, Cecil Christian, and Carl Crawford. Umpires: Jack Holt and Jimmie Gleason. Referee: Charlie Farrell. Ginger Rogers will sponsor the American Legion Team and Joan Bennett the Motion Picture Team.

7:00 P.M.—**RELIGIOUS AND PATRIOTIC SERVICES**, Hollywood Bowl, Highland Ave. Admission to registrants (white slips) free. Local cars at frequent intervals direct to and from Bowl, leave Subway Terminal Station, 423 South Hill St., fare 20c round trip.

## MONDAY—September 19th

12:00 noon to 1:00 P.M.—**WARNER BROTHERS FIRST NATIONAL STUDIO**, Burbank, Calif. Open to all registered Legionnaires. Tickets and registration books good only Monday afternoon, September 19th. Take Pacific Electric trains at 12 noon, Subway Terminal Building, 423 South Hill Street, changing at Barham Boulevard to Original stage line. Round trip—70c.

8:30 P.M.—**THE NIGHT OF CHAMPIONS**. Sponsored by The Schenley Corp. for the American Legionnaires—Gilmore Stadium, corner of Fairfax Avenue and Beverly Boulevard. Free fight and wrestling show, featuring John Henry Lewis, Henry Armstrong, Ceferino Garcia, Fred Apostoli, Howard Cantonwine, Jim Londos. Take Beverly bus at Pershing Square.

## TUESDAY—September 20th

**VENICE**—Tuesday, September 20th. Amusement Park. Reduced rates on various concessions to all registered Legionnaires. Pacific Electric trains, Subway Terminal Building, 423 South Hill, right to Venice.

**OCEAN PARK**—Tuesday, September 20th. Amusement Park. Fireworks display, Tooneyville free, Ocean Park Pier dance free to all registered Legionnaires. Pacific Electric trains, Subway Terminal Building, 423 South Hill, right to Ocean Park.

**SAN GABRIEL TOUR**—San Gabriel, California. Round trip via Pacific Electric. Trains leave Sixth and

Main Street Station at 1:00 P.M. Cost of round trip is 60c, which includes fare and entertainment features such as tour through San Gabriel Mission in groups of 25 with guides from the citizenry; dance and musical program by Raoul de Ramirez Studio featuring early California dance and fiestas; San Gabriel Art Gallery displaying works of Southern California artists; the famous grapevine, auto tour over residential section of San Gabriel, Los Portales de Santa Anita (a street of gourd shops and Mexican wares), Mission Curio Shop, Old Adobe, in connection with Grapevine—the first hotel in Southern California and known as Ramona's home, Cafes of Mexican and Spanish food, parts of original cactus hedge which surrounded the Mission Rancho, famous Mission Playhouse with replicas of all the Missions on the El Camino Real, El Amanar where hand wrought iron is forged in the same manner as in early California and in Spain, Church of Our Saviour and ruins of the Old Mill built by Chapman and the first mill to use beveled gears.

8:15 P.M.—**INTERCOLLEGIATE FOOTBALL—LOYOLA vs. CAL. TECH.**, Gilmore Stadium, corner of Fairfax Avenue and Beverly Boulevard. Take Beverly bus at Pershing Square. Tickets in registration books can be exchanged at Bullock's, Seventh and Hill; Desmond's, 5500 Wilshire Boulevard; Broadway Hollywood, Hollywood Boulevard and Vine Street; and Gilmore Stadium. Ticket plus 85c for admission.

## WEDNESDAY—September 21st

8:30 P.M.—**MOTION PICTURE NIGHT**, Los Angeles Coliseum. Parade of motion picture stars—Eddie Cantor, M.C.—Fanchon & Marco Revue—Joe E. Brown, M.C.—"Burning of Rome" (Spectacular Fireworks)—Jack Benny, Bob Burns—Specialties. Reduced rate to registered Legionnaires 90c for reserved seat. Colossal event. Take "F" car on Main Street; or cars No. 9 or 10 south on Broadway; or "J" west on Seventh to Grand, then south on Grand.

## THURSDAY, September 22nd

8:00 P.M.—**NIGHT POLO GAME**, followed by dance, Victor McLaglen's Sport Center, Riverside Drive. Admission 25c per person. Take Glendale Line Pacific Electric Train, Subway Terminal Station, 423 South Hill Street; get off at Riverside Drive and Glendale Boulevard and walk one block north.

Evening: **CHINESE FESTIVAL** at new Chinese City presenting the Festival of the Lanterns, dragon dance, Chinese fashion show with Chinese orchestra and other features. Take "O" and "B" cars north on Main Street.

## FRIDAY—September 23rd

**NAVAL REVIEW** to be held off Long Beach-San Pedro area. A special form of tickets. Limited number accommodated on battle cruisers. Allocations of these tickets made through the Entertainment Chairman, Hugo Harris, at Entertainment Booth, Subway Terminal Building, 423 South Hill Street. Boats will leave Pico Street Landing in Long Beach at 12:30 noon. This trip confined to men only—Legionnaires. Take Pacific Electric trains from Sixth and Main Street Station. Fare 60c round trip. There will be special trains running from 10:00 A.M. to 11:30 A.M. Those whose tickets call for embarkation at Pico Street Landing in Long Beach will take trains marked "Long Beach," leave cars at Golden Avenue, Long Beach, and walk short distance west over bridge and Pico Street to Naval Landing. Trains leave every 20 minutes—trip

Welcome Legionnaires!

Have a CAREFREE  
time, boys...but  
don't leave town  
until you've seen

FRED ASTAIRE  
GINGER ROGERS  
in "CAREFREE"

LYRICS AND MUSIC BY IRVING  
BERLIN

*and when you arrive back home...watch for*

FRED AND GINGER  
DOING THE YAM  
FROM "CAREFREE"

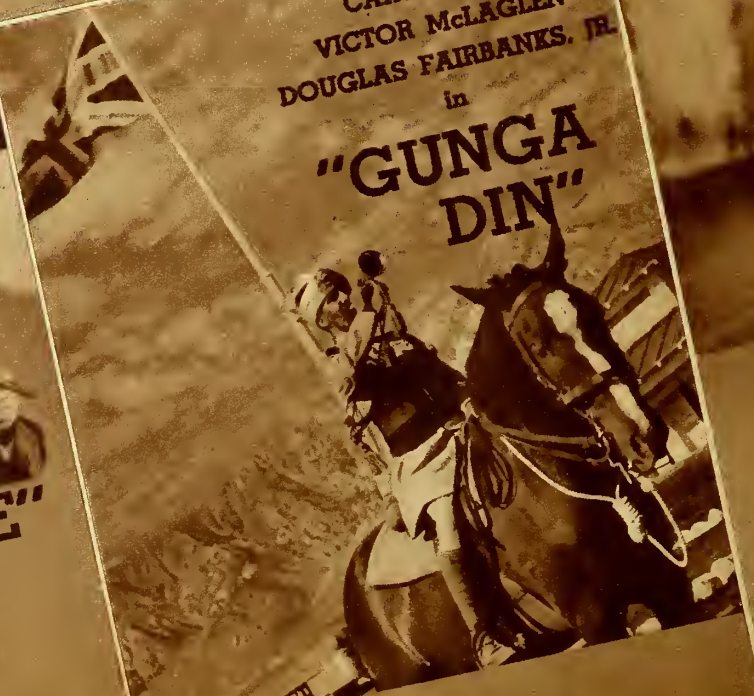
THE MARX BROS.



in "ROOM SERVICE"

CARY GRANT  
VICTOR McLAGLEN  
DOUGLAS FAIRBANKS, JR.  
in

"GUNGA  
DIN"





# ENTERTAINMENT FEATURES OF CONVENTION

takes 1 hour. Those whose tickets call for embarkation at San Pedro Naval Landing take San Pedro Line from above mentioned station, and go to Navy Landing, outer harbor, which is end of line. Service via this line is every 30 minutes. Trip takes one hour.

**LOS ANGELES COUNTY FAIR**, Pomona, Calif.—Tickets in all registration books good any day, including Sunday, until October 2nd, for the outstanding Fair of the United States. Take Pacific Electric Train, Pomona line, direct to Fair Grounds, Sixth and Main Street Station. Fare \$1.00 round trip.

**SANTA CATALINA ISLAND**—See beautiful Santa Catalina Island with its famous submarine garden, scenic skyline drive, and world famous glass bottom boats. Leave Pacific Electric Station, Sixth and Main Streets, between 8:30 and not later than 9:00 A.M. daily. Special rate of \$3.10 round trip from Los Angeles, \$2.50 round trip from Wilmington. Children five to eleven years half fare, under five years free. Tickets are limited, therefore it will be necessary that you make your definite reservation at the Santa Catalina Island Booth, located on the ground floor waiting room of the Subway Terminal Building, 423 South Hill Street.

**GRIFFITH PARK PLANETARIUM**—Demonstrations at 3:00 P.M. and 8:30 P.M. Admission by ticket only to all registered Legionnaires. Tickets to be picked up from Entertainment Chairman, Hugo Harris, at Entertainment Booth, Subway Terminal Building. A planetarium demonstration is a special type of motion picture show. It reproduces the sky so accurately that the audience believes that they actually are out-of-doors looking at the sky under the very clearest of conditions. Each one of the several thousand naked-eye stars is shown in exactly the proper place, the sun, moon and planets move among the stars as they do in nature. The demonstration is one of the greatest spectacles ever produced. In addition to the planetarium demonstration, the Griffith Observatory has the Hall of Science, with perhaps \$150,000 worth of modern scientific apparatus on display, and also a \$25,000 telescope, thru which several hundred people look each clear night of the year. The Hall of Science and the Observatory are absolutely free. Legionnaires have a complimentary coupon for the planetarium demonstration. Limitations are printed on it.

**ALLIGATOR AND OSTRICH FARMS**—The California Alligator Farm at 3627 Mission Road, opposite Lincoln Park, is the world's largest. Over one thousand are on exhibition at all times and it is open every day of the year from nine 'til six. Guides conduct every visitor thru and explain everything of interest, showing the alligators shooting the chutes and feeding. Bring your camera and we will help you get pictures that are different. If you care to, you may sit on the back of "Billy," a two hundred year old alligator that is very tame and gentle and a "Vet" of over three hundred motion pictures and we'll take your picture on him with your own camera and no charge. The Farm was established in 1906 and has been a source of interest and education to thousands of visitors.

The Los Angeles Ostrich Farm at 3609 Mission Road, opposite Lincoln Park, and reached by car "O" going North on Main Street, and car "10" going North on Broadway, is the only ostrich farm in the United States that hatches and raises birds. We ship birds to all parts of the world. Experienced guides conduct all visitors through and demonstrate the interesting features of these huge birds. All visitors are shown the methods of hatching, allowed to examine the eggs, shown the chicks and the birds of all ages. Bring your camera and have your picture taken in

the buggy pulled by "Cloudburst," the only driving ostrich in this country. Established in 1907, it has been one of the outstanding places of interest in Los Angeles. Any time from Monday, September 19th, to 22nd, inclusive, reduced rate of 15c for adults and 10c for children.

**SANTA BARBARA MISSION**—Beautiful beach resort and residential city. Here is located Santa Barbara Mission, of much interest because of its early history. Only one of the missions that was able to hold its own against the Mexican invasion. 99 miles from Los Angeles via the scenic Coast Highway. Also reached by Southern Pacific Railway, 610 South Main Street, Los Angeles.

**WRIGLEY FIELD**—Baseball park located at 435 East 41st Street. The home grounds for the Los Angeles "Angels." Owned by Wm. Wrigley, Jr., Estate, owner of Santa Catalina Island and the Chicago Cubs. Pacific Coast League games played here during the spring and summer months. "S" car east on Seventh to San Pedro.

**ANGELUS TEMPLE**, 1100 Glendale Boulevard, Los Angeles. Pacific Electric Edendale car on Sixth Street. The Temple seats 5,300. In the past 15 years Sister McPherson has preached to over 15 million people. On Sunday nights they have what they call "First-Nighters" night, having forty-eight States represented and as many as twenty-five foreign countries. They have as many as 2500 "First-Nighters" on some Sunday nights. On Thursday and Saturday and Sunday they have special guides, showing people through the Temple School Building, Commissary, etc. They have their own radio station and Bible College.

**HOLLYWOOD FIGHT STADIUM**, on El Centro, near Hollywood Boulevard. Site of the famous Hollywood Legion fights. This new Stadium was just completed this month. Take Pacific Electric Hollywood cars from Subway Terminal Building—or Hollywood busses.

**FOREST LAWN MEMORIAL PARK**, Glendale, California—8:00 A.M. September 20th through 22nd. Personally conducted guide tours. Site of the world-famous stained glass window "The Last Supper" and two famous replicas of churches, namely, "Wee Kirk o' the Heather" (Annie Laurie's church in Scotland) and "Little Church of the Flowers." Limited amount of tickets. Pick up from Hugo Harris, Subway Terminal Building. Take Glendale car or bus to San Fernando Road and Glendale Boulevard.

**GAY'S LION FARM**, El Monte, Calif.—Reduced rate to all registered Legionnaires, 30c; children under the age of nine admitted free; children nine to twelve 20c. Tickets good only Tuesday, Wednesday and Thursday, September 20, 21 and 22, between the hours of 10:00 A.M. and 4:00 P.M. Reached by Valley Boulevard or Pacific Electric trains to El Monte, from Sixth and Main Street Station.

**EXPOSITION PARK**—Beautiful 130 acre park with sunken garden, California State Exposition Building, Los Angeles Museum, notable art collections, Fossil exhibit. Among the prominent features are the large habitats of animal life and the realistic reproduction of the Carlsbad Caverns in New Mexico. Hours, 10:00 A.M. to 4:00 P.M. daily. Open Sundays and Holidays from 2:00 to 5:00 P.M. Take "F" car on Main Street; cars "9" or "10" south on Broadway; or "7" west on Seventh to Grand, which goes south on Grand.

**MILLION DOLLAR TRADE SCHOOL—NATIONAL SCHOOLS**, 4000 South Figueroa Street at Santa Barbara (across

THEIR WAITING ADMIRERS ARE

*Legion*



Deanna Durbin and Melvyn Douglas  
in "THAT CERTAIN AGE"



Joel McCrea and Andrea Leeds  
in "YOUTH TAKES A FLING"



Randolph Scott and Hope Hampton  
in "THE ROAD TO RENO"



Danielle Darrieux  
in "RIO"

**UNIVERSAL PICTURES**

ESTABLISHED SINCE 1873  
**Ralphs**  
GROCERY COMPANY  
SELLS FOR LESS

All Departments  
OWNED  
and OPERATED by  
Ralphs Grocery Company

All stores are closed  
Sundays and  
major holidays

**WELCOME LEGIONNAIRES!**



**FIRE-CHIEF**

**WHEREVER YOU GO!**

**THE TEXAS COMPANY**

# ENTERTAINMENT FEATURES OF CONVENTION

from Exposition Park). Daily from 8:30 A.M. to 9:00 P.M. See Diesel Engines in operation. Television demonstrations and modern electrical equipment. Free admission. Take "F" cars on Main Street; or cars "9" and "10" south on Broadway; or "J" west on Seventh to Grand, where it goes south on Grand.

**TIMES BUILDING TOUR.** First and Spring Streets. Two tours daily through the newspaper plant, every day of the Convention, 3:00 and 5:00 P.M. Limited amount of tickets to each tour. Kindly obtain same from Entertainment Chairman, Hugo Harris, at Entertainment Booth, Subway Terminal Building.

**COLUMBIA SQUARE—**Columbia Broadcasting Radio Studio Tour, 45 minute tour daily, 10:00 A.M. to 10:00 P.M. Reduced rates of 30c adults, 20c children, to all registered Legionnaires. Take Hollywood Boulevard car, Subway Terminal Building, 423 South Hill Street—or Sunset Boulevard busses to El Centro Avenue, Hollywood.

**LA BREA PITS,** Hancock Park, north side of Wilshire Boulevard between La Brea and Fairfax Avenue. Here were excavated the world-famous skeletons of prehistoric animals now exhibited at the Los Angeles County Museum in Exposition Park. Wilshire coach on Hill, Fifth to Eighth Streets, then west on Eighth.

**JAPANESE GARDENS—**Beautiful home and ground situated on a Hollywood hilltop, depicting true Japanese type of architecture and landscape gardening. Motor.

**OLVERA STREET (Paseo de Los Angeles)—**A quaint street of old Spanish days. Mexican and Spanish food and novelties sold in sidewalk shops. One of city's most interesting places (located just north of Plaza). Take "O" car north on Main Street.

**HOLLYWOOD SHOPPING DISTRICT—**Hollywood Boulevard between Vine Street and Highland Avenue. Take subway trains marked "Hollywood Boulevard" from Subway Terminal Building, 423 South Hill Street, Los Angeles.

**BEVERLY HILLS—**Ten miles from Los Angeles, west on Wilshire Boulevard. One of Southern California's finest and most beautiful residential sections. Home of a great many of the motion picture stars.

**HUNTINGTON LIBRARY,** Pasadena, California. Beautiful art exhibit, home of the Gainsborough's Blue Boy. Limited groups only. Tickets may be obtained in a limited amount by contacting Mrs. Ivy Merman at Trinity Auditorium, or Mr. Hugo Harris, Entertainment Booth in Subway Terminal Building. Take Monrovia line trains, Sixth and Main Street Station, Pacific Electric, transferring at San Marino Station to Sierra Madre cars direct to the Huntington Library. Fare 54c round trip. Tickets can only be obtained for Tuesday, Wednesday and Thursday, September 20th, 21st and 22nd.

**PONY EXPRESS MUSEUM,** Arcadia, Calif.—Exhibits of early Pony Express and relics of days of '49 in early California—all original antiques. Glendora line trains, Pacific Electric Station, Sixth and Main Streets, fare 66c round trip.

**DEEP SEA FISHING,** Ocean Park Pleasure Fishing Co.—Special rates to registered Legionnaires—good September 19th to 23rd inclusive. Bait and tackle furnished on barges—must be rented for the deep sea boats. Pacific Electric trains, Subway Terminal Building, 423 South Hill, right to Ocean Park.

**PASADENA—"Crown City"—**12 miles from Los Angeles via North Broadway and Pasadena Avenue. Noted for fine homes, millionaires' residences, modern shopping center. Scene of world-famed Tournament of

Roses and East-West football game. Pacific Electric Railway, Sixth and Main Street Station.

**MT. WILSON AND CARNEGIE OBSERVATORY—**21 miles from Los Angeles. Beautiful mountain resort, towering pines, game refuge; comfortable hotel and bungalows. Famous Carnegie Observatory and Solar museum open daily. Largest telescope in the world. Bus from Union Stage Depot and via auto travel via Pasadena and Foothill Boulevards. Union Stage Depot located at 202 East Fifth Street, Los Angeles.

**LAKE ARROWHEAD—**Situated in the San Bernardino National Forest. It is only 2½ hours from Los Angeles, over a scenic high gear state highway. The Lodge and North Shore Tavern, headquarters for socialites and movie stars, sponsor a series of smart events each season. Lake Arrowhead Village is a private recreational and shopping center, maintained for residents of Lake Arrowhead Woods and hotel guests. All favorite sports are enjoyed here. Pacific Electric trains, Sixth and Main Street Station, or Motor Transit to San Bernardino, transfer to Mountain Auto Line.

**JAPANESE ENTERTAINMENT AND STREET DANCE—**The Japanese Community of Los Angeles is holding a Japanese entertainment and street dance under the auspices of Commodore Perry (Japanese) Post No. 525, American Legion, in honor of visiting Legionnaires and their families on Tuesday night, September 20th. The location will be on Central Avenue between East First and Jackson Streets. Everything is free for visiting Legionnaires.

**JOINT KIWANIS-LEGION LUNCHEON—**Place, Biltmore Hotel Ballroom. Time, Wednesday noon, September 21st. Sponsored by Service Club Post No. 546, American Legion. All visiting Kiwanian-Legionnaires invited.

**AMERICAN LEGION NIGHT IN CHINATOWN—**Thursday night, September 22nd. Time, 7 p.m. until dawn. The Los Angeles Chinatown Association will provide free entertainment for all visiting Legionnaires and their guests at the new Chinatown in the 900 block on North Broadway. The entertainment will consist of fireworks especially imported from China, such as never or very seldom seen in this country; Dragon Dance; Chinese Music; Street Dance and Band Concerts.

**SAN DIEGO—CORONADO—TIJUANA—AGUA CALIENTE—**135 miles from Los Angeles via Coast Highway. Beautiful bay, one of the most historical cities in America. See the Old Town, in San Diego, also the San Diego Zoo. Tijuana and Agua Caliente are just across the border in Old Mexico. Santa Fe trains, and Santa Fe Transportation Company.

**WARNER BROTHERS FIRST NATIONAL STUDIOS—Via TANNER MOTOR TOURS.** \$1.50 round trip. Busses will leave the Biltmore Hotel under dates of 19th, 20th, 21st and 22nd—six tours every day—at 9:00 A.M., 10:00 A.M., 11:00 A.M., 1:00 P.M., 2:00 P.M. and 3:00 P.M. Trip will take approximately two and one-half hours.

**HEADQUARTERS FOR SONS OF THE LEGION—**Room 502, Pacific Electric Bldg.—Phone MA. 9422, Station 400. All Polish American Legionnaires are invited to make their Headquarters free of charge at 40th and South Park, the clubrooms of the Polish American Citizens Club. Bring your buddy along. Sunday, September 18th, High Mass and a chicken dinner will be served at 10:00 o'clock A.M.—50 cents per plate. Saturday, September 24th, a Polish dance will be given in honor of all visiting Polish American Legionnaires and their buddies at the Polish Home at 40th and South Park.



**Mobilgas**

WHERE

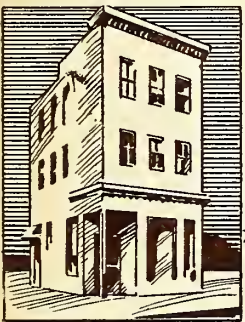
*Millions*  
**OF MOTORISTS**  
*Stop every day!*

**GENERAL  
PETROLEUM  
CORPORATION**

**Sears Salutes  
The American Legion**



**SEARS-ROEBUCK  
and Co.**



The old pharmacy in Baltimore where Captain Isaac E. Emerson first compounded Bromo-Seltzer.

**50 YEARS of  
PROGRESS**



A PHARMACEUTICAL In Every  
Sense of the Word . . . . .

**Bromo-Seltzer**



*Celebrate with*  
**GOOD HUMOR  
ICE CREAM**

# **AUTOGRAPHS-MEMORANDUM**



Look for  
*the Sign of*  
*a better drink...*



Wherever you find this emblem—in hotels, clubs or restaurants—it's the sign of thoughtful service.

at leading hotels, clubs and restaurants

So that you may enjoy a fresher, better-tasting long, tall drink, leading hotels, restaurants and clubs serve Canada Dry Water. That's because Canada Dry Water is the zesty mixer that *keeps its sparkle*.

Serve Canada Dry Water in your home. You can prove its superiority by leaving an opened bottle in a refrigerator. Twenty-four hours later it will still be alive with that "Champagne" Sparkle... the result of Canada Dry's own process, PIN-POINT CARBONATION.

*Sparkling* CANADA DRY WATER

*The perfect Club Soda*



# AUTOGRAPHS-MEMORANDUM

# IRIS



*In Glass*  
COSTS NO MORE  
THAN IN TIN

# COFFEE

VACUUM PACKED

HAAS, BARUCH AND CO.  
LOS ANGELES, CALIF.

# HERMOSA BILTMORE HOTEL

*"On the Strand"*

THE HERMOSA BILTMORE is modern in every respect... 150 rooms luxuriously furnished throughout... Oceanic Dining Room and Lounge overlooks ocean... Marine and Rose Room Cocktail Lounges... Banquet Hall... Ballroom... Coffee Shop... Locker facilities.

Warmed Saltwater Indoor Plunge... open to the public

The Hermosa Biltmore is easily reached over several fine boulevards and by interurban electric cars. Hermosa, with its five miles of safe, sandy beach, is only twenty-five minutes from downtown Los Angeles. When driving from Los Angeles, proceed south on Western Avenue to Redondo Boulevard, follow double white lines direct to Hermosa.

COMRADES WELCOMED

Frank Cummings, Jr., Manager

HERMOSA  
BILTMORE



THE ARISTOCRAT OF SOUTH BAY BEACHES

## DON'T MISS LOS ANGELES COUNTY FAIR

POMONA, SEPTEMBER 16 - OCTOBER 2



LARGEST IN AMERICA

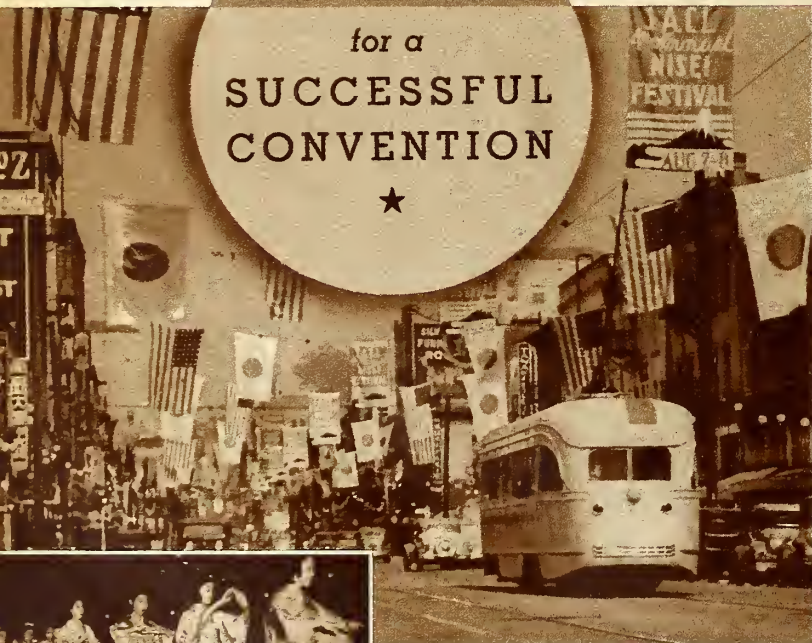
30,000 EXHIBITS

300 ACRES

HORSE RACING DAILY With Pari-mutuel

## SINCERE GREETINGS

for a  
SUCCESSFUL  
CONVENTION



JAPANESE CONSULATE AT  
LOS ANGELES



CENTRAL JAPANESE ASSN.  
OF SOUTHERN CALIFORNIA



JAPANESE CHAMBER OF  
COMMERCE OF LOS ANGELES



SOUTHERN CALIFORNIA  
JAPANESE CHAMBER OF  
COMMERCE AND INDUSTRY

# WELCOME LEGIONNAIRES



**SAFeway**  
*Your Neighborhood Grocer*





**LOS ANGELES HARBOR** holds much interest for those whose knowledge of the sea comes from books. Here is shown part of a cargo of wheat being loaded for the Orient.



**THE STATE-OWNED BEACH** at Santa Monica brings thousands to its silver strand every week end throughout the entire year and, during the summer months, it is popular every day in the week.



**YACHTING** is one of the major sports of Los Angeles County water devotees. Here is shown an entry in one of the many contests annually staged.

**DEEP SEA FISHING** is one of the most popular recreations in Los Angeles County. Many varieties of game fish are caught. At right is shown the result of a shark fishing expedition.



**OIL PRODUCTION** forms one of the basic industries of Southern California, Los Angeles County having several thousand wells in production. Here is a scene at the seashore in the Venice oil field.



**WILSHIRE BOULEVARD** is one of the notable streets of the world. Here it is shown crossing Westlake Park, five minutes from downtown Los Angeles.

# WELCOME LEGIONNAIRES!

READY FOR FUN  
OR A FIGHT . . .  
JUST LIKE THEIR  
DADS!



## "SONS OF THE LEGION"

with

LYNNE OVERMAN • EVELYN KEYES  
TIM HOLT • ELIZABETH PATTERSON  
WILLIAM FRAWLEY • BILLY LEE  
DONALD O'CONNOR • BILLY COOK

KEITH MacKENZIE

Directed by James Hogan



INTRODUCING Keith  
MacKenzie... A Real  
"Son of the Legion"

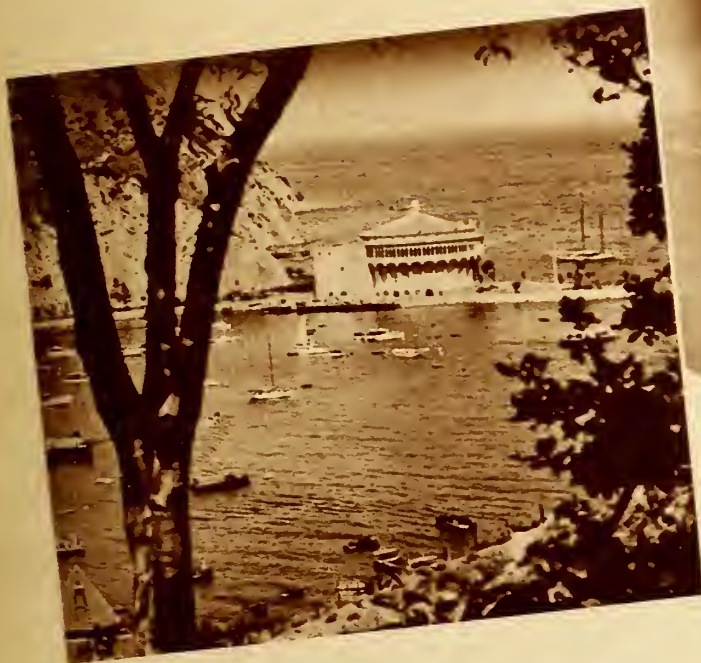


A PARAMOUNT PICTURE... FEATURING Evelyn Keyes  
*Watch For It at Your Favorite Theatre!* "Miss American Legion"





**STATE BEACH**, at Santa Monica, where Legionnaires and their families may cool off with the refreshing sea breezes of the Pacific. This is only one of dozens of beautiful beaches sure to attract the conventioners.



**SANTA CATALINA ISLAND**, on beautiful Avalon Bay, will lure many who have heard so much of this magic isle in the Pacific. The boat trip to Catalina is a delightful one and the beauties of the island will linger long in the memory of those who visit this garden spot.



**THE U. S. FLEET** will present a great naval demonstration and review in San Pedro and Long Beach harbors on Friday, September 23rd, as a tribute to the American Legion. Admiral C. C. Bloch, commander-in-chief of the U. S. Navy, ordered this demonstration, the first time in history that any organization has been so honored. Eight thousand Legionnaires will be placed aboard the ships as the remainder of the fleet noses in from sea maneuvers to pass in review. Four hundred Navy planes will roar overhead during the "big show."

**HUNTINGTON ART GALLERY**, (Photo at lower left.)



**"RED SAILS IN THE SUNSET"**—a beautiful scene on the Pacific where sailing offers great recreation for old Salts and even land-lubbers.



**Bienvenue!**  
 (COMPRENEZ-VOUS?)

**OCCIDENTAL**  
 LIFE INSURANCE COMPANY  
*of California*  
 HOME OFFICE \* LOS ANGELES

L. M. GIANNINI, President

F. N. BELGRANO, JR., Vice Pres.

Unsurpassed SIGHTSEEING Tours  
 of the scenic wonderland of  
**SOUTHERN CALIFORNIA**



Regularly scheduled, personally conducted sight-seeing tours, embracing all outstanding points of interest.

In **DE LUXE PARLOR CARS** or  
**LUXURIOUS LIMOUSINES**

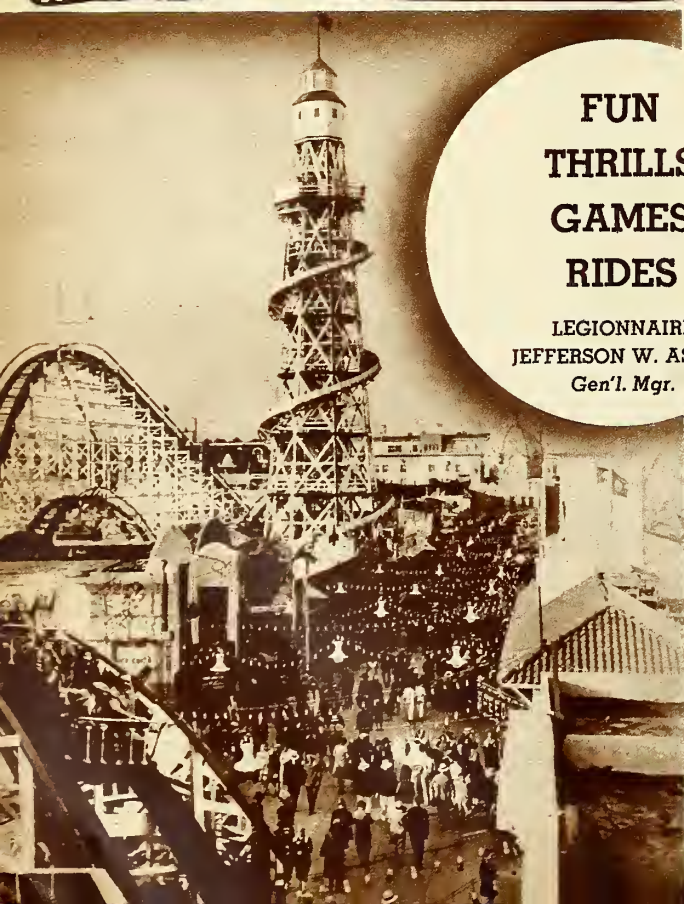
Up-to-date U-DRIVE Cars and the finest  
**PRIVATE CARS** with Chauffeurs  
 in Uniform, Available for All Occasions

**TANNER-GRAY LINE**  
**MOTOR TOURS**

320 S. Beaudry Ave., Los Angeles • MUTual 3111

*An unexcelled, complete and economical sightseeing and transportation service*

**OCEAN PARK**  
**AMUSEMENT PIER**  
 THE PLAYGROUND OF THE WEST



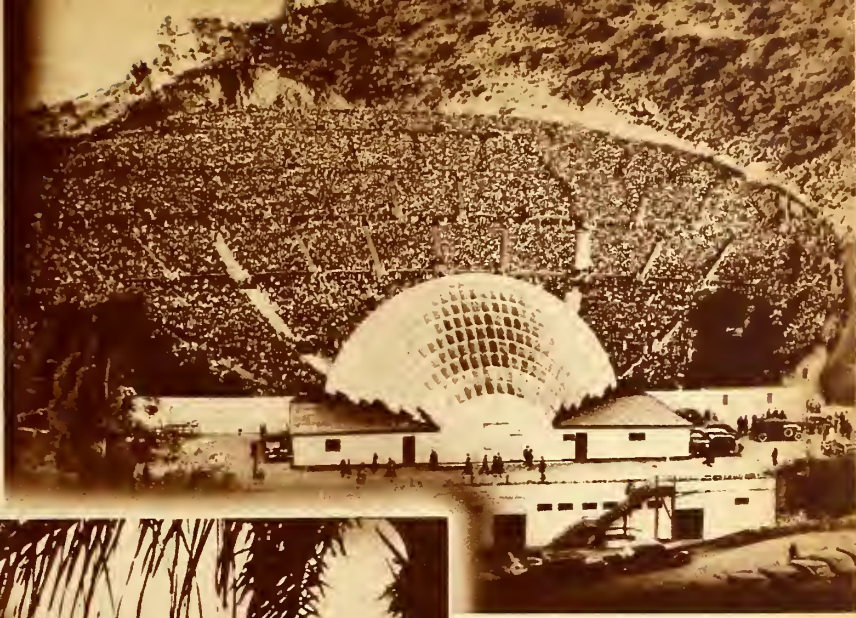
**FUN**  
**THRILLS**  
**GAMES**  
**RIDES**  
 LEGIONNAIRE  
 JEFFERSON W. ASHER  
 Gen'l. Mgr.

**FOOD**  **STORES**  
 1859 1938  
**FOOD STORES**

**79 YEARS**  
**OF**  
**SAVINGS**  
**SERVICE**  
**SATISFACTION**



**A & P FOOD STORES**



**THE OLD PLAZA CHURCH**, in the heart of what was once the activity of the city, is one of the most interesting spots in the older part of the city. It adjoins the Plaza, or public park, around which the city was built by the Spanish settlers.

**HOLLYWOOD BOWL** is the scene every summer of "Symphonies Under the Stars" and is internationally known for the excellence of the concerts.



**LOS ANGELES CITY HALL** is one of the finest examples of building architecture in the country. The view from the tower open to the public reveals the city's skyline.

**SAN GABRIEL MISSION** (below), founded in 1771, is one of the most colorful of the 21 missions established from the Mexican line to San Francisco by Father Junipero Serra. It was from here that a party set out, in 1781, to found the city of Los Angeles.

**ROYCE HALL**, at the University of California at Los Angeles, a branch of the state university, is but one of a group of buildings which in beauty of design and landscaping, has brought much credit to the institution.

**PALM-LINED STREET** (right) in Beverly Hills, one of the most exclusive of residential suburban districts to Los Angeles. Some of the palms are 100 years old.





● Discovered by the Mariposa Battalion in 1851. World-famous Yosemite Valley.

Left—The most photographed tree in the world—the Wawona Tree in the Mariposa Grove of Big Trees.

*This Space Sponsored By*

SID GRAUMAN ● GLASER BROS. ● W. A. BROWN  
GUENTHER'S MURRIETA MINERAL HOT SPRINGS  
JOHNSON, CARVELL & MURPHY ● THE LEIGHTON INDUSTRIES, INC.  
PERKINS CEMENTING, INC. ● NATIONAL DOLLAR STORES  
ASSOCIATED OPERATORS OF L. A. COUNTY, INC.  
QUAKER STATE OIL REFINING CO.  
FRENCH SARDINE CO.



*Greetings*  
**WARNER BAXTER**



**Best  
Wishes  
BING  
CROSBY**

# ACTIVE WORKER

for

SUCCESSFUL  
CONVENTION



**FRANK N. BELGRANO, JR.**  
Past National Commander, The American Legion  
President, Pacific National Fire Insurance Company

John R. Quinn, Past National Commander, and President, 1938 American Legion National Convention Corporation, of Los Angeles, says: "It is to such loyal workers as Frank Belgrano that this Convention owes much of its success. ★ Despite his nationwide responsibilities as head of Pacific National Fire Insurance Company, he has given unselfishly of his own time and energy—not to mention the generous aid of his Company in providing advertising space to stimulate Convention registration and other Legion activities. Many officers and employees of his Company who are Legionnaires, are also active in Post and Department affairs. ★ Frank Belgrano exemplifies the saying, 'when you want something done, go to a busy man.' He is indeed busy; but somehow always finds time to work for The American Legion."



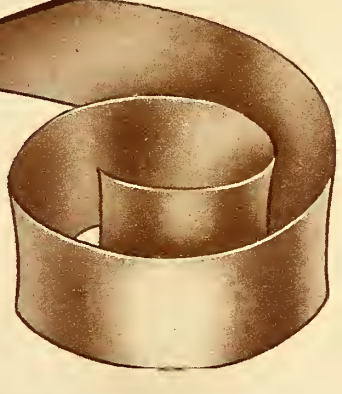
HAL ROACH

EDWARD SMALL

SAMUEL GOLDWYN

DAVID O. SELZNICK

WALTER WANGER



UNITED ARTISTS  
PRODUCERS

FREE CODE SPECIALS . . . FIVE STAR REPORTS  
WINNING WIRE RATINGS . . . CLOCKERS COMMENTS

# WINNING WIRE Weekly Forecast

AT ALL NEWSSTANDS **35c**

America's Finest Racing Weekly

**32 PAGES**

LAST MINUTE REPORTS FROM  
ALL MAJOR TRACKS

## DIRECT TO YOU

THROUGH the far-reaching facilities of the Winning Wire organization, first-hand information on secret coups in the making, sleepers, workouts, and standouts is brought direct to you. Winning Wire Weekly Forecast is not an advertising medium---there are 32 pages of aids to you in your turf operations. Convince yourself---give it a trial---go to your newsstand and purchase the new issue or remit \$1.00 direct to the Los Angeles office for 3 issues.

### TRACK STAFF

HARRY MEYERS  
SOLLY LEVINE  
JIMMIE WILSON

VIC BENNETT  
ED MACKAY

BURKE MURRAY  
ROLLIE NOBLES  
DAN MULLEN

General Offices

Los Angeles, Calif.

Suite 410 Broadway Arcade Bldg.

# A PLAYER'S GUIDE

# Welcome Legionnaires



J. I. SCHNITZER



A. H. SCHNITZER



# WESTERN COSTUME CO.

HOLLYWOOD, CALIFORNIA



IN QUALITY THEY TRUST

# Dr. Ross'

DOG and CAT FOOD

# NARDONI BONDING COMPANY BAIL BONDS

STATE FEDERAL IMMIGRATION  
ESTABLISHED 1923  
NATION WIDE SERVICE  
DAY OR NIGHT

315 WEST FIRST STREET  
Opposite Old Central Station

**Michigan 7781**



AUGUST M. NARDONI  
HOLLYWOOD POST 43  
VOITURE 47, FORTY AND EIGHT

# L. G. BALFOUR COMPANY

Manufacturers of the

Nineteen thirty-eight  
National Convention Badges  
and  
Official Insignia of the  
Legion and Auxiliary

● **CRES WELLS, Representative**

FACTORY:  
ATTLEBORO, MASS.

LOS ANGELES OFFICE  
928 RICHFIELD BUILDING



**S**TATLER HOTELS know that when the Legion comes to town, it comes for good times and a good convention.

The hotel headquarters, we think, can make the convention better if it catches the SPIRIT of the Legionnaires. We've been headquarters when the Legion has been in Statler cities, so we already have the SPIRIT. We've enjoyed having you—and we invite you to come back again. There'll always be a big "Welcome Legion" mat at the Statler door.

**STAY *Hotels* STATLER**

BOSTON • BUFFALO (*also Hotel Buffalo*)

CLEVELAND • DETROIT • ST. LOUIS

NEW YORK • HOTEL PENNSYLVANIA

BOSTON and HOTEL STATLER invite the American Legion in 1940

# At the Sign of the Windmill



## WELL - BAKED PRODUCTS

Time-tested recipes —many of them a heritage from generations of skilled Dutch housewives —account for the flavor that distinguishes all of Van de Kamp's baked goods.

ALSO  
FINE ICE CREAM  
FRESH FINE CANDIES



**W**HILE in Los Angeles at your Convention you may purchase souvenir novelties of every description at our Broadway Woolworth Stores. The finest food obtainable is served at our lunch counters. Stores are air-conditioned for your comfort.

## F. W. WOOLWORTH CO.

STORES LOCATED AT 431 AND 719 SOUTH BROADWAY

# "Be Happy go LUCKY"

ABOARD THE "GOOD SHIP"

# CALIENTE!

Go lucky—go Caliente! Our crew is friendly—our complimentary dinners excellent—our dance music rhythmic. By all means, visit the S. S. Caliente. A rare treat is in store for you.

Continuous speed cruiser service from 501 Pico Ave., Long Beach. Round trip only 25c.

Open from 1 p. m. until 2 Saturdays, Sundays and holidays... 6 p. m. until 2 weekdays.

Los Angeles telephone Pleasant 12011.  
Long Beach telephone 66009.



### COMPLIMENTARY DINNER

Clip this coupon for a complimentary dinner for you and your party. (Adults only). No extra charge or obligation. We cater to large parties.



CALIENTE DOCKS  
501 PICO AVENUE  
LONG BEACH.



"GOOD SHIP"

# CALIENTE

ANCHORED OFF  
LONG BEACH



Part of the extensive plant of Los Angeles Brewing Company, brewers of **EASTSIDE** Beer and Ale. This brewery has been in continuous operation for more than forty years.

## DOUGLAS DC-4



With new comfort, speed and safety for 42 passengers and crew of five, this world's largest commercial land plane takes its appointed place as Sovereign of the Skies. DOUGLAS AIR-CRAFT CO., INC., Santa Monica, California.

## OUR "RAINBOW" DIVISION *Salutes You*

**SUNSET OIL  
COMPANY**



MARKETERS OF FINE  
PETROLEUM PRODUCTS  
LOS ANGELES, CALIF.



**3** great **20 mule team** helpers

for keeping the home of today friendly, cheerful

and clean



**BORAX SOAP CHIPS** . . . Gentle, lasting suds for dainty lingerie, baby's garments, fine linens and woollens.

**BORAXO**  
Fine Toilet Soap plus pure Borax. Removes stubborn dirt quickly.

**BORAX** . . . makes water feel soft— aids soap to produce 3 to 5 times more suds.

**PACIFIC COAST BORAX COMPANY**  
LOS ANGELES, CALIFORNIA



The complete 5-10-25 CENT STORE

Quality merchandise at a saving.

**J.J. Newberry Co.**

5-10-25 CENT STORES

**OFFICIAL  
DECORATORS  
AND  
FLOAT BUILDERS**

**AMERICAN  
LEGION  
NATIONAL  
CONVENTION**



**JONES DECORATING CO., INC.**

752 SOUTH SAN PEDRO STREET  
LOS ANGELES, CALIFORNIA



**"Central"-ized  
Location is Important**

One of the most important factors in efficient operation of an industry is its centralized location. Planned in advance to give greatest accessibility and most efficient transportation facilities, this district offers outstanding advantages . . . including the exclusive Los Angeles Junction Railway service.

**CENTRAL  
Manufacturing District  
LOS ANGELES**



**LIVESTOCK VALUES  
are established on the  
CENTRAL MARKET**

● All livestock values are based upon prices arrived at by open, competitive bidding at the great central livestock markets. Every sale at the stock yards is a public sale; official government market reports record the age, weight, quality and condition of the animals; every lot is sold upon the same basis; that is after feed, water and rest, permitting regaining of condition before the animals cross the scales. Every sale is on a strictly CASH basis.

**LOS ANGELES  
UNION STOCK YARDS  
"THE GREAT WESTERN MARKET"**



# Greetings to Legionnaires from Three Old Favorites



PARROTT & CO.  
320 California Street  
SAN FRANCISCO

PACIFIC COAST  
DISTRIBUTORS

Los Angeles  
Portland  
Seattle

Teacher's  
"Highland  
Cream"  
Blended  
Scotch  
Whisky  
88 Proof

Gordon's  
Distilled  
London Dry  
Gin  
100% Neutral  
Spirits Distilled  
From Grain  
94.4 Proof

\*\*\*  
Hennessy  
Cognac  
Product of  
France  
84 Proof

## Where there is LIFE, there's —

*\*Dietetically*  
**NON-FATTENING**

\*As compared with other  
foods in diet, Acme Beer is  
relatively non-fattening.



BOHEMIAN DISTRIBUTING COMPANY  
2060 EAST 49TH STREET • PHONE KIMBALL 1181 • LOS ANGELES, CALIF.

ALL THE Thrills OF RIVIERA, BIARRITZ,  
MONTE CARLO, and CANNES Surpassed

*A Thrill a Minute  
Unlimited Action*

### ANCHORED OFF REDONDO BEACH

*Beyond the 3-mile limit*

Only 20 minutes from Hollywood—  
25 minutes from downtown Los An-  
geles, plus a pleasant 15 minute  
boat ride to the Rex. Continuous  
5 minute water taxi service. 25c  
round trip. Look for the big red  
"X." Ship open 5 P.M. daily, 1 P.M.  
Saturday, Sunday and Holidays.

No Couvert... popular priced meals  
at all hours. Cuisine by Pierre, for-  
merly of S.S. Leviathan.

Our Cocktail Bar serves bonded  
liquors exclusively.



# S.S. REX

ANCHORED OFF  
REDONDO BEACH

DUAL POWERED, FIREPROOF SAFETY SHIP ★ INSPECTED BY U. S. STEAMBOAT INSPECTORS

# Fourth Year of Fun and Frolic!!

Largest Pleasure Ship on the Pacific  
**DINING-DANCING-ENTERTAINMENT**  
 2 BARS...ALL DRINKS AT POPULAR PRICES

## S.S. TANGO

MODERN FIREPROOF ALL-STEEL SAFETY SHIP

**OPEN**

Week Days 6 P. M. UNTIL ???  
 Sat., Sun., Holidays - 1 P. M. UNTIL ?

For Further Information, Phone  
 LOS ANGELES.. TH. 7811  
 or LONG BEACH.. 62962



**FASCINATING  
 SPORTIVE  
 GAMES**

**ANCHORED IN CALM  
 PROTECTED WATERS  
 RIDE THRU THE BATTLE FLEET**

*More Exciting  
 than the Races*

**22,500 Sq. Ft. of Playroom on TWO DECKS**

**Visit World-Renowned Blue Room - 2nd Deck**

Speedboats every 10 minutes both  
 ways from Seventh and Pico Streets  
 Long Beach—25c Round Trip

**FREE PARKING**  
 ...for 1,500 Cars

Clip coupon and present to the steward in the main dining  
 room or apply at the cashier's office for

**COMPLIMENTARY DINNER TICKET**

Which entitles you and your party of adults to the Tango's  
 incomparable seven-course dinner as guests of the Cap-  
 tain—FREE



# AMERICAN LEGION NATIONAL CONVENTION



*Greetings Legionnaires*

YOUR CHOICE OF FINE WHISKIES FROM SCHENLEY'S PARADE OF QUALITY



**Bottled in Bond**  
under U. S. Gov't Supervision  
100 PROOF

## A True Bluegrass Bourbon

Schenley's Bonded Belmont has the full-bodied richness that is Bourbon's crowning glory. It is a true Bluegrass Bourbon — "deep as a diamond, a jewel of good taste."

**SCHENLEY'S BONDED Belmont**  
KENTUCKY STRAIGHT BOURBON WHISKEY

COPR. 1938, SCHENLEY DISTRIBUTORS, INC., N. Y. C.

Also these superb Bottled in Bond Rye Whiskies!

**OLD SCHENLEY**  
STRAIGHT RYE WHISKEY

**MONTICELLO**  
Special Reserve  
STRAIGHT Rye WHISKEY

*Gibson's*  
STRAIGHT RYE WHISKEY

All BOTTLED IN BOND under U. S. Gov't Supervision—100 Proof

# SCHENLEY



COPYRIGHT 1938, THE COCA-COLA COMPANY

## Get the *feel* of refreshment

It's natural to get thirsty . . . and a frosty bottle of ice-cold Coca-Cola is the best friend thirst ever had. Pause . . . enjoy one now . . . and get the *feel* of refreshment.

Drink

**Coca-Cola**  
TRADE MARK

Delicious and  
Refreshing

5¢





# Official Program



## Twentieth Annual National Convention The American Legion

LOS ANGELES, CALIFORNIA . . . SEPTEMBER 19, 20, 21, 22, 1938

### FRIDAY, SEPTEMBER 16, 1938

9:00 a. m.—Resolutions Assignment Committee, Biltmore Hotel.

### SATURDAY, SEPTEMBER 17, 1938

9:00 a. m.—Contests Supervisory Committee.

10:00 a. m.—National Organization Revision Committee.

2:00 p. m.—Legion Publishing and Publicity Commission.

### SUNDAY, SEPTEMBER 18, 1938

9:00 a. m.—National Convention Liaison Committee.

1:00 p. m.—Committee on Credentials, Biltmore Hotel, Conference Room No. 1.

1:15 p. m.—Committee on Permanent Organization, Biltmore Hotel, Conference Room No. 1.

1:30 p. m.—Committee on Rules, Biltmore Hotel, Conference Room No. 1.

2:00 p. m.—Juvenile Delinquency Conference, Patriotic Hall, 1816 South Figueroa St., Los Angeles.

3:00 p. m.—National Executive Committee, Biltmore Hotel, Conference Room No. 1.

7:00 p. m.—Religious-Patriotic Services, Hollywood Bowl.

### MONDAY, SEPTEMBER 19, 1938

(Joint Session — The American Legion and the American Legion Auxiliary)

PLACE: SHRINE AUDITORIUM

9:00 a. m.—Music  
Musicians Post No. 394 Band,  
St. Louis, Mo.....National Champions

San Gabriel Post No. 442  
Drum and Bugle Corps,  
San Gabriel, Calif.....National Champions

9:30 a. m.—Call to Order — DANIEL J. DOHERTY, *National Commander.*

Invocation — REV. FRANK J. LAWLER, *National Chaplain.*

Advancement of Colors.

Solo — "Star Spangled Banner"  
—JOHN BOLES, *Official Soloist.*

Call for Convention—FRANK E. SAMUEL, *National Adjutant.*

### Addresses of Welcome:

His Excellency FRANK F. MERRIAM, *Governor of California.*

His Honor FRANK L. SHAW, *Mayor, City of Los Angeles.*

JOHN R. QUINN, *President, The 1938 American Legion Convention Corporation of Los Angeles.*

JOSEPH S. LONG, *1937-38 Commander, Department of California, The American Legion.*

Response: FRANK N. BELGRANO, JR., *Past National Commander.*

Presentation of Medallion to Honorable FIORELLO H. LAGUARDIA, *Chief Executive of the City of New York*, in which previous National Convention was held—JOHN R. QUINN, *Past National Commander.*

### Committee Reports:

- (a) Permanent Organization.
- (b) Credentials.
- (c) Rules.

MEMORIAL SERVICES—REV. FRANK J. LAWLER, *National Chaplain.*

"There Is No Death," O'HARA  
—JOHN BOLES, *Official Soloist.*

Silent Prayer.

Taps.

### Addresses:

Honorable DAVID I. WALSH, *United States Senator, Massachusetts.*

### Greetings:

MRS. MALCOLM DOUGLAS, *National President, American Legion Auxiliary.*

FRED G. FRASER, *Chef de Chemin de Fer Forty and Eight.*

### Presentation of Distinguished Guests:

Addresses: Intendant General PIERRE VINCENSINI.  
Honorable GEORGES RIVOLLET.  
Representative for Italy.

Report of National Commander.

Retirement of Colors.

Adjournment.

AMERICAN LEGION CONVENTION CORPORATION HEADQUARTERS

Schenley Building

716 South Spring Street

MAdison 9422

3:00 p. m.—Meetings of all Convention Committees — Biltmore Hotel.

7:00 p. m.—National Commander's Dinner for Distinguished Guests—Biltmore Hotel Bowl.

## TUESDAY, SEPTEMBER 20, 1938

9:00 a. m.—Official Convention Parade.

p. m.—Meetings of Convention Committees — Biltmore Hotel.

(These meetings will be held at time agreed upon at previous meetings.)

## WEDNESDAY, SEPTEMBER 21, 1938

PLACE: PHILHARMONIC AUDITORIUM

8:30 a. m.—Music.

9:00 a. m.—Call to Order — DANIEL J. DOHERTY, *National Commander*.

Advancement of Colors.

Invocation—REV. FRANK J. LAWLER, *National Chaplain*.

Introduction and brief addresses:

Committee Reports:

Constitutional Amendments (First Reading).

Presentation of Distinguished Guests:

Greetings:

Addresses:

Honorable HARRY H. WOODRING, *Secretary of War*.

JAMES A. DRAIN, *Past National Commander*.

FRANK T. HINES, *Administrator, U. S. Veterans' Affairs*.

Convention Committee Reports:

Finance.

Americanism.

Child Welfare.

National Defense.

Foreign Relations.

Internal Organization.

Legislation.

Rehabilitation.

Resolutions.

National Convention Liaison Committee  
(Standing Committee) JAMES P. RINGLEY,  
*Illinois, Chairman*.

Education of War Orphans.

Retirement of Colors.

Adjournment.

## THURSDAY, SEPTEMBER 22, 1938

PLACE: PHILHARMONIC AUDITORIUM

8:30 a. m.—Music.

9:00 a. m.—Call to Order — DANIEL J. DOHERTY, *National Commander*.

Advancement of Colors.

Invocation—REV. FRANK J. LAWLER, *National Chaplain*.

Presentation of Distinguished Guests:

Addresses:

Reports of Convention Committees:

Constitutional Amendments (Second Reading)

Announcement of Trophy Awards:

(a) Bands.

(b) Drum and Bugle Corps.

(c) Rifle Drill Teams.

(d) Golf Tournament.

(e) Color Guard.

(f) Sons of The American Legion Drum and Bugle Corps.

(g) Post History Contest.

Unfinished Business.

New Business:

(a) Election of Officers.

Presentation of Colors to Outgoing National Commander — RAY MURPHY, *Past National Commander*.

Presentation of Colors to Incoming National Commander — RALPH T. O'NEIL, *Past National Commander*.

Retirement of Colors.

Adjournment.

(The National Executive Committee will meet within twenty-four hours after the adjournment of the National Convention, upon call of the National Commander.)

## Program—For Ex-Service Women

MARION "PAT" KOENIG, *Chairman*

EDITH SADLER, *Vice Chairman*

KATHERINE EDWARDS, *Vice Chairman*

LILLIE V. WEIL, *Secretary*

Sunday, Monday, Tuesday, Wednesday and Thursday—

8:00 a. m. to 8:00 p. m.

Hostess room open all of above days at above times—  
Biltmore Hotel—Headquarters.

### SUNDAY, SEPTEMBER 18, 1938

9:00 a. m.—Catholic Church Services — St. Vincent's Church,  
26th and Figueroa—FATHER W. P. ROOTES, C.M.

10:45 a. m.—Protestant Church Services—Temple Baptist Church,  
Philharmonic Auditorium, 5th and Olive Streets  
—DR. RALPH WALKER.

2:00 to 5:00—Tea at Marion Davies' Santa Monica Beach  
Home. Admission only on presentation of re-  
quired credentials.

### MONDAY, SEPTEMBER 19, 1938

9:00 a. m.—Opening sessions of the Twentieth Annual Con-  
vention of The American Legion at Shrine Audi-  
torium.

6:30 p. m.—REUNION BANQUET — Ballroom of Biltmore  
Hotel—\$3.00 per plate.

### TUESDAY, SEPTEMBER 20, 1938

7:30 a. m.—NURSES' REUNION BANQUET — Town and  
Gown Club, University of Southern California  
Campus—\$1.00 per plate.

7:30 a. m.—YEOMANETTE BREAKFAST — Biltmore Hotel,  
main dining room—\$1.00 per plate. Annual  
business meeting of National Yeoman F. follow-  
ing Reunion Breakfast.

### WEDNESDAY, SEPTEMBER 21, 1938

8:00 a. m. —BREAKFAST — National Organization World  
War Nurses — Clark Hotel — \$1.00 per plate.  
This will be breakfast and meeting.

12:15 noon—MEDICAL CORPS LUNCHEON—Medical Corps  
Luncheon for everyone who served with the Army  
or Navy Medical Corps or the Dental Corps, to  
be held at Coconut Grove, Ambassador Hotel—  
\$2.50 per plate.

Trip through Forest Lawn Memorial Park to see  
famous Lord's Last Supper Stained Glass  
Window.

# Official Program

## Eighteenth Annual National Convention AMERICAN LEGION AUXILIARY

### Los Angeles, California . . . September 19, 20, 21, 22, 1938

#### SUNDAY, SEPTEMBER 18, 1938

- 8:30 a. m.—Aloha Breakfast, for first Past Department Presidents, Town House.  
MRS. LOWELL FLETCHER HOBART, *Chairman*.  
MRS. BERTHA REEVES, *Local Chairman*.
- 9:30 a. m.—National Executive Committee Meeting, Conference Room 2, The Biltmore Hotel.
- 11:00 a. m.—Fidac Breakfast, Blue Ballroom, The Biltmore Hotel.  
MRS. S. ALFORD BLACKBURN, *American Vice President of Fidac Auxiliary and National Fidac Chairman*.  
MRS. ERNESTINE AYLWARD, *Local Chairman*.
- 1:00 p. m.—Pages' Rehearsal, Trinity Auditorium, 847 Grand Avenue.  
MRS. M. G. ANDRESEN, *National Chairman*.  
MRS. M. K. ELBERTSON, *National Vice Chairman*.  
MRS. BLANCHE FRANCIS, *Local Chairman*.
- 2:00 p. m.—Gold Star Mothers meet at Patriotic Hall to be taken to tea at the Metro-Goldwyn-Mayer Studio where they will be greeted by Jeanette MacDonald and by Norma Shearer.
- 2:30 p. m.—Convention Committee Meetings, Trinity Auditorium, 847 Grand Avenue.  
Community Service, Music, Emblem, Trophies and Awards: MRS. LAWRENCE SMITH, *Chairman—Stage Room*.  
Education of War Orphans: MRS. ALBERT M. GREENLAW, *Chairman—Right Gallery*.  
Finance: MRS. O. W. HAHN, *Chairman—Library*.  
Legislative: MRS. MYRON MILLER, *Chairman—Room 201*.  
Membership: MRS. EUGENE SHEPLEY, *Chairman—North Hall*.  
Permanent Organization: MRS. A. A. PANTELIS, *Chairman—Left Gallery*.  
Poppy: MRS. GLEN SNODGRASS, *Chairman—Studio Hall*.  
Rehabilitation: MRS. JAMES MORRIS, *Chairman—Assembly Room*.  
Rules: MRS. FRED R. MORROW, *Chairman—Stage*.
- 3:30 p. m.—Convention Committee Meetings, Trinity Auditorium.  
Credentials: MRS. ETHEL KING BARNETT, *Chairman—Stage*.
- 4:30 p. m.—Convention Committee Meetings, Trinity Auditorium, 847 Grand Avenue.  
Americanism: MRS. ERNEST G. RAREY, *Chairman—Lounge*.  
Child Welfare: MRS. AL J. MATHEBAT, *Chairman—Assembly Room*.  
Constitution and By-Laws: MRS. A. H. HOFFMAN, *Chairman—Stage Room*.  
Employment: MRS. MELVILLE MUCKLESTONE, *Chairman—North Hall*.  
Fidac: MRS. S. ALFORD BLACKBURN, *Chairman—Studio Hall*.  
Historians: MRS. EVA M. SHERBURNE, *National Historian—Stage*.  
Junior Activities: MRS. WILLIS C. REED, *Chairman—North Hall*.

- National Defense: MRS. EBEN P. KEEN, *Chairman—Right Gallery*.  
National News: MRS. W. D. VILLARS, *Chairman—Library*.  
Radio: MRS. WM. H. CORWITH, *Chairman—Left Gallery*.  
Resolutions: MRS. CHARLES B. GILBERT, *Chairman—Room 201*.
- 5:00 p. m.—Pages' Tea, Elysian Park Clubhouse.  
MRS. RUTH MEYERAND, *Chairman*.
- 5:00 p. m.—Eight and Forty Pouvior Meeting.  
MRS. MARY HAWS, *Chairman*.  
MRS. PAULINE RAIRDON, *Secretary*.
- 7:00 p. m.—Patriotic and Religious Service, Hollywood Bowl.
- 10:00 p. m.—Department Secretaries' Supper, Trocadero Club.  
MISS ANN CROSS, *Secretary, Department Secretaries' Association*.  
MRS. ETHEL M. FLYNN, *National Chairman*.  
MRS. MONICA FORSTER, *Local Chairman*.
- 10:00 p. m.—Past Presidents' Parley Meeting and Supper, Florentine Room, Roosevelt Hotel, Hollywood.  
MRS. BOYCE FICKLEN, JR., *National Parley Chairman*.  
MRS. BERNIECE KEYES, *General Chairman*.

#### MONDAY, SEPTEMBER 19, 1938

- 9:00 a. m.—Attendance at National Convention of The American Legion.
- 1:20 p. m.—Opening Session, National Convention, American Legion Auxiliary, Trinity Auditorium, 847 Grand Avenue, Los Angeles.
- 1:30 p. m.—Processional of National Officers and Distinguished Guests.
- 1:45 p. m.—Call to Order by the National President, MRS. MALCOLM DOUGLAS.  
Advance of Colors.  
Pledge of Allegiance to the Flag, led by MRS. ERNEST G. RAREY, *National Americanism Chairman*.  
Invocation: MRS. ALLAN S. HATHAWAY, *National Chaplain*.  
Reading of the Call to the Convention, MRS. GWENDOLYN WIGGIN MACDOWELL, *National Secretary*.  
Greetings from the Department of California, American Legion Auxiliary, MRS. MAX ELLISON, *Department President*.  
Presentation of Convention Chairmen by the National Chairman of the Convention, MRS. CHARLES DECKER.  
Reports:  
National Secretary, MRS. GWENDOLYN WIGGIN MACDOWELL.  
National Treasurer, MRS. CECILIA WENZ.  
National Historian, MRS. EVA SHERBURNE.  
Music. Prize winning Glee Club for 1937.
- 2:30 p. m.—Address: Annual Report of the National President, MRS. MALCOLM DOUGLAS.  
Music: Prize winning Trio for 1937.  
Address: *National Commander of The American Legion*, MR. DANIEL DOHERTY.  
Address: MRS. FLORENCE KAHN, *Former Member of Congress from California*.

Greetings: National Vice Presidents, American Legion Auxiliary.

Greetings: *American Vice President, Fidac Auxiliary*, MRS. S. ALFORD BLACKBURN.

Greetings: *First National President, American Legion Auxiliary*, MRS. LOWELL FLETCHER HOBART.

Presentation of Past National Presidents:

MRS. FRANKLIN LEE BISHOP.

MRS. O. D. OLIPHANT.

MRS. ELIZA LONDON SHEPARD.

MRS. J. W. MACAULEY.

MRS. ROBERT WALBRIDGE.

MRS. BOYCE FICKLEN, JR.

MRS. DONALD MACRAE.

MRS. ROBERT LINCOLN HOYAL.

MRS. FREDERICK C. WILLIAMS.

MRS. S. ALFORD BLACKBURN.

MRS. WM. H. BIESTER, JR.

MRS. ALBIN CHARLES CARLSON.

MRS. MELVILLE MUCKLESTONE.

MRS. OSCAR W. HAHN.

Reports of Convention Committees:

Permanent Organization: MRS. A. A. PANTELIS, *Chairman*.

Credentials: MRS. ETHEL KING BARNETT, *Chairman*.

Rules: MRS. FRED R. MORROW, *Chairman*.

Americanism: MRS. ERNEST G. RAREY, *Chairman*.

Constitution and By-Laws: MRS. A. H. HOFFMAN, *Chairman*.

Education of War Orphans: MRS. ALBERT GREENLAW, *Chairman*.

Fidac: MRS. S. ALFORD BLACKBURN, *Chairman*.

Junior Activities: MRS. WILLIS C. REED, *Chairman*.

Membership: MRS. EUGENE SHEPLEY, *Chairman*.

Radio: MRS. WM. H. CORWITH, *Chairman*.

Presentation of National Presidents' Pages:

Retirement of Colors.

Adjournment.

4:00 p. m.—National Music Contest—Auditorium, Times Bldg.  
MRS. CHARLES TUCKER, *National Chairman*.  
MRS. IVA FRENCH CAYOT, *Local Chairman*.

4:00 p. m.—Eight and Forty Marche.

8:00 p. m.—Divisional Caucuses: Trinity Auditorium, 847 Grand Avenue.

MRS. BENJAMIN F. ADAMS, *Vice President, Eastern Division*—North Hall.

MRS. LOUIS J. LEMSTRA, *Vice President, Central Division*—Assembly Room.

MRS. HALSEY D. CORY, *Vice President, Northwestern Division*—Studio Hall.

MRS. ANDREW LAWOW, *Vice President, Southern Division*—North Hall.

MRS. GEORGE A. COLE, *Vice President, Western Division*—Stage Room.

9:30 p. m.—Eight and Forty Dinner.

## TUESDAY, SEPTEMBER 20, 1938

Adjourned Committee Meetings as necessary.

9:00 a. m.—Parade.

## WEDNESDAY, SEPTEMBER 21, 1938

8:00 a. m.—Convention Convenes, Trinity Auditorium, 847 Grand Avenue.

Call to Order by the National President, MRS. MALCOLM DOUGLAS.

Advance of the Colors.

Pledge of Allegiance to the Flag, led by MRS. ERNEST G. RAREY, *National Americanism Chairman*.

Invocation: MRS. ALLAN S. HATHAWAY, *National Chaplain*.

Nomination of National Officers.

Nomination of American Vice President, Fidac Auxiliary.

Reports of Convention Committees:

Community Service, Music, Emblem, Trophies and Awards: MRS. LAWRENCE SMITH, *Chairman*.

Emblem, Trophies and Awards: MRS. NELS O. LANGSETH, *Chairman*.

Music: MRS. CHARLES TUCKER, *Chairman*.

Music by the winning Glee Club.

Address: MISS MAY ROBSON.

Reports of Convention Committees:

Child Welfare: MRS. AL J. MATHEBAT, *Chairman*.

Poppy: MRS. GLEN SNODGRASS, *Chairman*.

Finance: MRS. O. W. HAHN, *Chairman*.

Music by the Winning Trio.

Address: JUDGE CAMILLE KELLY,

Reports of Convention Committees:

Legislative: MRS. MYRON MILLER, *Chairman*.

National Defense: MRS. EBEN P. KEEN, *Chairman*.

Employment: MRS. MELVILLE MUCKLESTONE, *Chairman*.

National News: MRS. W. D. VILLARS, *Chairman*.

Rehabilitation: MRS. JAMES MORRIS, *Chairman*.

Music by the Winning Quartette.

Presentation of Distinguished Guests.

Report of Past Presidents' Parley, MRS. BOYCE FICKLEN, JR., *Chairman*.

Report of Eight and Forty, MRS. MARY HAWS, *Chapeau National*.

Retirement of Colors.

Adjournment.

5:00 p. m.—Eight and Forty Pouvoir Meeting.

6:30 p. m.—STATES' DINNER—Biltmore Bowl, The Biltmore Hotel, MRS. ETHEL M. HEARST, *Chairman*.

## THURSDAY, SEPTEMBER 22, 1938

8:00 a. m.—Convention Convenes — Trinity Auditorium, 847 Grand Avenue.

Call to Order by the National President, MRS. MALCOLM DOUGLAS.

Advance of the Colors.

Pledge of Allegiance to the Flag, led by MRS. ERNEST G. RAREY, *National Americanism Chairman*.

Invocation: MRS. ALLAN S. HATHAWAY, *National Chaplain*.

Election of National Officers.

Election of American Vice President, Fidac Auxiliary.

Unfinished Business:

Report of Convention Committees:

Constitution & By-Laws: MRS. A. H. HOFFMAN, *Chairman*.

Resolutions: MRS. CHARLES B. GILBERT, *Chairman*.

New Business.

Introduction of Newly-elected National Commander of The American Legion.

Installation of Officers.

Presentation of Colors to the Retiring President.

Retirement of Colors.

Adjournment.

*Post Convention Meeting of the National Executive Committee, Trinity Auditorium, 847 Grand Avenue, Los Angeles.*

# Parade Information

## Headquarters Parade Committee 700 Exposition Boulevard Prospect 3535

### PARADE COMMITTEE

HON. HARRY W. COLMERY, *Honorary Grand Marshal*  
MAJOR GENERAL WALTER P. STORY, *Chairman and Grand Marshal*  
COLONEL HALSEY E. YATES, *Chief of Staff*  
LT. COL. DAVID H. COWLES, *Deputy Chief of Staff*  
LT. COL. MORRIS DRAPER, *Adjutant General*

---

## Parade Order

1. GENERAL: The instructions contained herein will govern the official parade of the Twentieth National Convention of the American Legion.

2. DATE AND HOUR: The leading elements of the parade will move promptly from the initial point at 9:00 a.m. Tuesday, September 20, 1938.

3. INITIAL POINT. The initial point is Figueroa Street at 23rd Street.

#### 4. ROUTE:

a. The parade will start at Figueroa Street and 23rd Street, proceed south on Figueroa Street to South Park Drive, west on South Park Drive to Menlo Avenue, north on Menlo Avenue to the tunnel entrance to the Coliseum, circle the field of the Coliseum keeping to the right, exit through the tunnel, turn right on Menlo Avenue to 39th Street, then east on 39th Street into Exposition Park, which is designated the disbanding area for marchers.

b. It is essential that organizations maintain strict march discipline on entering and leaving the Coliseum, because of the limited width of the tunnel entrance and exit.

5. ASSEMBLY: The hour and place of assembly for all departments and elements of the parade are as indicated on the parade map herewith and in Paragraph 10 of this order. Guides to assembly areas will be provided.

#### 6. CIRCULATION:

a. The assembly area bounded by Figueroa Street, 23rd Street, Oak Street, (all inclusive) and Washington Boulevard, (exclusive) is closed to traffic during the hours of assembly except for persons residing in the area. All traffic under police control.

b. 20th, 21st, 22nd, and 23rd Streets, between Figueroa and Flower Streets, are closed to traffic during the hours of assembly of the First and Second Divisions.

c. Figueroa Street: Two way traffic under police control until 8 A.M. After that hour restricted to the parade movement between Washington Boulevard and Santa Barbara Avenue except as follows: Under police con-

trol, street cars on Jefferson Boulevard will be permitted to cross Figueroa Street between intervals of marching elements of the parade.

d. Exposition Park: Restricted to the parade movement except for pedestrians entering and leaving the Coliseum, and the parking of automobiles authorized by the Coliseum Corporation.

e. Menlo Avenue, north of Santa Barbara Avenue: Restricted to the parade movement after 9:00 A.M.

f. Alley between Menlo Avenue and Vermont Avenue, Santa Barbara Avenue to Exposition Boulevard. Restricted to the parade movement after 9:00 A.M.

g. Exposition Boulevard; between Vermont Avenue and Figueroa Street: Reserved for disbandment of vehicles in the parade, for parking busses and other means of transportation used by bands and drum and bugle corps, and for parking of taxis and other means of public transportation, all as directed by traffic officers.

h. Parking enclosure at National Guard Armory: Reserved for parking of vehicles of parade officials.

i. Passes will be secured from the Coliseum Corporation authorizing the parking of Distinguished Guests' cars and official cars in Exposition Park.

#### 7. DISBANDING:

a. Under the direction of the Chief Regulating Officer, Disbanding Area, units will maintain formation and step until well into Exposition Park. Ranks will then break formation and disperse promptly in order not to interfere with the march of succeeding units.

b. On exiting from the tunnel, automobiles and floats will be diverted from the column, cross Menlo Avenue and the parking lot directly west of the tunnel exit, turn right in the alley between Vermont Avenue and Menlo Avenue to Exposition Boulevard, where vehicles will disband. After disbanding, vehicles will clear Exposition Boulevard promptly by returning to stations via streets west of Figueroa Avenue or parking in the area north of Exposition Boulevard and west of Figueroa Street.

#### 8. ELIGIBILITY TO PARTICIPATE IN THE PARADE:

a. With the exception of the Police and Military and Naval Escorts and Distinguished Guests, eligibility to participate in the parade is limited to The American Legion, uniformed bodies of the American Legion Auxiliary, and Sons of the American Legion.

b. Entry of floats in the parade is restricted to those of an American Legion, patriotic or community character. Floats will not display commercial advertising matter of any kind. Attention is directed to the dimensions of the Coliseum tunnel entrance and exit, both of which are 27 feet in height and 17½ feet in width. Both are on a grade.

9. ORGANIZATION: In order to regulate and facilitate the march of the parade the various elements have been grouped into ten divisions, each under a division Marshal. For ready reference the composition of these divisions, showing the order of march and the time and place of assembly for the various elements, are shown in the Organization and March table, following:

## PARADE ORDER (Continued)

### 10. ORGANIZATION AND MARCH TABLE.

Unit	Time	Place of Assembly
A. Escort, Los Angeles City Police.	8:30 a.m.	Figueroa Street, between Washington Boulevard and 23rd Street, facing South. Head of column at 23rd Street.
B. Grand Marshal and Staff. Honory Marshals and Staffs.		

#### 1st DIVISION

Brigadier General Harcourt Hervey, Marshal.

C. Military and Naval Escort: 63rd Coast Artillery, (AA), U.S. Army	8:30 a.m.	Figueroa Street, facing south, in rear of Honorary Marshals and Staffs.
160th Infantry, California National Guard		
U. S. Naval Reserves		
13th Battalion, U.S. Marine Corps Reserve.		

#### 2nd DIVISION

Colonel Dwight M. Green, Marshal.

D. National Champion American Legion Band.	8:30 a.m.	22nd Street between Flower and Figueroa, facing west. Head of column at Figueroa.
National Colors, with National Rifle Team as Escort to the Colors.		
E. National Commander National Champion Drum and Bugle Corps.		In rear of "D".
Past National Commanders (If not with their Depts.)		
F. Foreign Departments: Alaska, Canada, France, Hawaii, Italy, Mexico, Panama, Philippine Islands, Puerto Rico.		21st Street between Flower and Figueroa, facing west. Head of column at Figueroa.

#### 3rd DIVISION

Lieutenant Colonel H. L. White, Marshal.

Mississippi	8:45 a.m.	23rd Street, facing east, head of column at Figueroa Street. Both sides of street will be utilized by this Division in accordance with signs erected by the Regulating Officer.
Louisiana		
New Mexico		
Maryland		
Wisconsin		
Idaho		
Georgia		
Florida		
New Hampshire		
District of Columbia		

#### 4th DIVISION

Lieutenant Colonel John N. Jeffers, Marshal.

Indiana	9:15 a.m.	23rd Street, facing east, head of column at Park Grove Avenue. Both sides of street will be utilized by this Division in accordance with signs erected by the Regulating Officer.
Virginia		
Maine		
Colorado		
Iowa		
Washington		

#### 5th DIVISION

Lieutenant Colonel George W. Oertly, Marshal.

Minnesota	9:45 a.m.	Norwood Street, facing south, head of column at 23rd Street. Both sides of street will be utilized in accordance with signs erected by the Regulating Officer.
Arkansas		
Arizona		
North Carolina		
New Jersey		
Texas		
Oklahoma		
West Virginia		

#### 6th DIVISION

Colonel Dallas D. Dennis, Marshal.

Oregon	10:30 a.m.	Park Grove Avenue, facing south, head of column at 23rd Street. Both sides of street will be utilized in accordance with signs erected by the Regulating Officer.
Illinois		

#### 7th DIVISION

Lieutenant Colonel James H. O'Reilley, Marshal.

Montana	11:15 a.m.	Bonsallo Avenue, facing south, head of column at 23rd Street. Both sides of street will be utilized in accordance with signs erected by the Regulating Officer.
Ohio		
New York		
Connecticut		
Michigan		

#### 8th DIVISION

Lieutenant Colonel Robert A. McMillan, Marshal.

Unit	Time	Place of Assembly
Missouri	11:45 a.m.	Estrella Avenue, facing south, head of column at 23rd Street. Both sides of street will be utilized in accordance with signs erected by Regulating Officer.
Delaware		
Nebraska		
Rhode Island		
Kansas		
Pennsylvania		
Vermont		
South Dakota		
Tennessee		
Nevada		
Wyoming		
South Carolina		

#### 9th DIVISION

Lieutenant Colonel Frank H. Holden, Marshal.

North Dakota	12:15 p.m.	Norwood Street, facing south (will be cleared by 5th Division), head of column at 23rd Street. Both sides of street will be utilized in accordance with signs erected by the Regulating Officer. Regulating Officer will also insure Ninth Division takes up march at proper time to follow Eighth Division at prescribed distance.
Utah		
Massachusetts		
Kentucky		
Alabama		

#### 10th DIVISION

Colonel Wayne R. Allen, Marshal.

California	12:45 p.m.	Park Grove Avenue - Bonsallo Avenue - Estrella Avenue — (Will be cleared by preceding divisions). Heads of all columns at 23rd Street, facing south. Regulating Officer will erect signs.
------------	------------	---

#### 11. FORMATION:

- a. Police Escort: As directed by the Commander of the Escort.
- b. Grand Marshal and Staff: Honorary Marshals and Staffs: As directed by the Grand Marshal.
- c. Military and Naval Escort: Battalions in mass formation, column of (12) Twelve.
- d. National Champion Band: As directed by the Commander.
- e. National Colors and National Rifle Team: As directed by the National Commander.
- f. National Commander and Staff: As directed by the National Commander.
- g. National Champion Drum and Bugle Corps: As directed by the Commander.
- h. American Legion Departments (including uniformed bodies of the American Legion Auxiliary and Sons of the American Legion) will march in platoons of sixteen (16), formed in two ranks, eight (8) men abreast, forty (40) inches distance between front and rear ranks.
- i. Massed Colors: Eight abreast. The department and post Colors of each department of the American Legion and the department and unit Colors of each department of the American Legion Auxiliary will be massed at the head of each department delegation. This must include Colors of all musical organizations, except those competing in the Color Guard contest.
- j. Bands and Drum Corps: As directed by Drum Majors, not exceeding eight (8) men abreast.
- k. Authorized Floats and Automobiles: In single column.
- l. Mounted units: Column of fours.

#### 12. MARCHING DISTANCES.

- The following marching distances will be maintained:
- a. In the Assembly Area elements will be closed up without distance.
  - b. Distance between elements of the Military and Naval Escort will be as prescribed in the applicable military or naval regulations.
  - c. Distance between platoons of the American Legion: Ten (10) paces. (Note: For the purpose of this order any group of Colors will be considered a platoon.)

## PARADE ORDER (Continued)

- d. Distance between Division: Fifty (50) paces.  
 e. Distance between Departments: Thirty (30) paces.  
 f. Distance between floats or automobiles: Fifteen (15) feet.  
 g. Twenty five (25) paces distance in front and rear of bands and drum corps will be maintained during the march.
13. REVIEWING AND GRAND STANDS.  
 a. The official reviewing stand for the National Commander and his party will be on the right, midway of the south side of the field of the Coliseum.  
 b. Distinguished Guests will occupy the grand stands immediately in rear of the official reviewing stand.
14. SALUTES.  
 a. Elements of the parade will render but one salute throughout the line of march. This salute will be rendered when passing the reviewing stand of the National Commander. No stops will be permitted.  
 b. The guide will be right.
15. CONDUCT OF THE MARCH.  
 a. Maneuvering or special feature marching at any place, either in front of the reviewing stand or along the route of march is strictly prohibited.  
 b. The Chief Regulating Officer, Coliseum, will erect signs in the Coliseum to indicate when bands will commence and cease playing. Bands will not play while within "silent zone" areas within the Coliseum.
16. FIRST AID AND AMBULANCE STATIONS: First Aid and Ambulance Stations in the Assembly Area, along the route of march and in the Disbanding Area will be designated by Red Cross emblem.
17. CONVENIENCE STATIONS: Convenience stations in the Assembly Area and along the route of march will be indicated by appropriate signs.
18. PARADE OFFICIALS: In addition to his general and personal staff, the Grand Marshal will be assisted in the conduct of the parade by other officials designated as Regulating Officers,

Division Marshals, Liaison Officers and Guides.

- a. Chief Regulating Officer, Assembly Area:  
Lieutenant Colonel William F. Maher.
- b. Chief Regulating Officer, Line of March:  
Major Alexander N. Stark, Jr.
- c. Chief Regulating Officer, Reviewing Stand:  
Major Harold E. Hopping.
- d. Chief Regulating Officer, Disbanding Area:  
Lieutenant Colonel Stephen J. Chamberlain.
- e. Division Marshals: The following are designated as Division Marshals:
- |                                    |               |
|------------------------------------|---------------|
| Brigadier General Harcourt Hervey, | 1st Division  |
| Colonel Dwight M. Green,           | 2nd Division  |
| Lieut. Colonel H. L. White,        | 3rd Division  |
| Lieut. Colonel John N. Jeffers,    | 4th Division  |
| Lieut. Colonel George W. Oertly,   | 5th Division  |
| Colonel Dallas D. Dennis,          | 6th Division  |
| Lieut. Colonel James H. O'Reilly,  | 7th Division  |
| Lieut. Colonel Robt. A. McMillan,  | 8th Division  |
| Lieut. Colonel Frank H. Holden,    | 9th Division  |
| Colonel Wayne R. Allen             | 10th Division |

### 21. GENERAL INSTRUCTIONS:

- a. Embraced in this order are the parade map and the march table. The march table contains information as to assembly areas and the order of the march. The parade map shows graphically the parade route. The number appearing in front of the name of each unit refers to the corresponding number on the parade map, and shows the approximate location of the assembly area for the unit. Exact location will be indicated in the assembly area by a marker bearing the name of the unit.
- b. Parade officials, liaison officers and guides will be identified by appropriate brassards.
- c. The cooperation of all Departments is earnestly requested, particularly as to prompt assembly in the designated areas, elimination of maneuvering of feature marching which will delay the march, and the prompt dispersion in the disbandment areas. Departments not on time in column at the time of moving out will be assigned by Regulating Officers, Assembly Area, to the rear of the column.

## First Aid Stations

CHARLES F. SEBASTIAN, M. D., *General Chairman*

ADMINISTRATION AND METROPOLITAN AID STATION  
 Pershing Square Los Angeles Telephone MAdison 9422  
 Hill Street between Fifth and Sixth Sts.

*First-Aid and Dressing Station. Ambulance Station.*

UNION TERMINAL AID STATION  
 Union Terminal Depot. Aliso Street Entrance.  
*First-Aid and Dressing Station. Ambulance Station*

MEMORIAL COLISEUM AID STATIONS  
 Los Angeles Memorial Coliseum. Exposition Park.  
*First-Aid and Dressing Stations on the Northeast and Southwest corners of the grounds and within the coliseum wherever designated by Red Cross emblem.*  
*Ambulance Station outside Tunnel Six and Twenty-two.*

AMERICAN LEGION PARADE AID STATIONS  
*First-Aid and Dressing Stations at the assembly and disbanding areas and along the line of march. Each Aid Station marked with Red Cross emblem.*  
*Ambulance Station on patrol along the line of march.*

EASTSIDE ACTIVITIES AID STATION  
 5010 1/2 South Central Avenue Los Angeles  
*First-Aid and Dressing Station. Colored Physicians and personnel in attendance.*

HOLLYWOOD BOWL AID STATION  
*First-Aid and Dressing Station at the Hollywood Bowl during the opening ceremonies, Sunday evening, September 18th.*

AMERICAN LEGION AUXILIARY AID STATION  
 Trinity Auditorium Lobby. 847 South Grand Ave.  
*First-Aid and Dressing Station during regular sessions.*

FORTY AND EIGHT SOCIETY AID STATION  
 Pacific Electric Auditorium. 610 South Main Street.  
*First-Aid and Dressing Station during regular sessions.*

SWIMMING STADIUM AID STATION  
 Los Angeles Swimming Stadium. Exposition Park.  
*First-Aid and Dressing Station during the program of The Sons of The American Legion, all day, September 20th.*

GREEK THEATRE AID STATION  
 Griffith Park. Greek Theatre.  
*First-Aid and Dressing Station during the ceremonies of The Sons of the American Legion.*

SHRINE AUDITORIUM AID STATION  
 Shrine Civic Auditorium. Royal Street at Jefferson Blvd.  
*First-Aid and Dressing Station during the regular session, Monday morning, September 19th.*

HOSPITALIZATION AT THE UNITED STATES GOVERNMENT HOSPITAL  
 National Military Home, Sawtelle  
 COL. ROBERT A. BRINGHAM, *Commandant.* Telephone West L. A. 31121

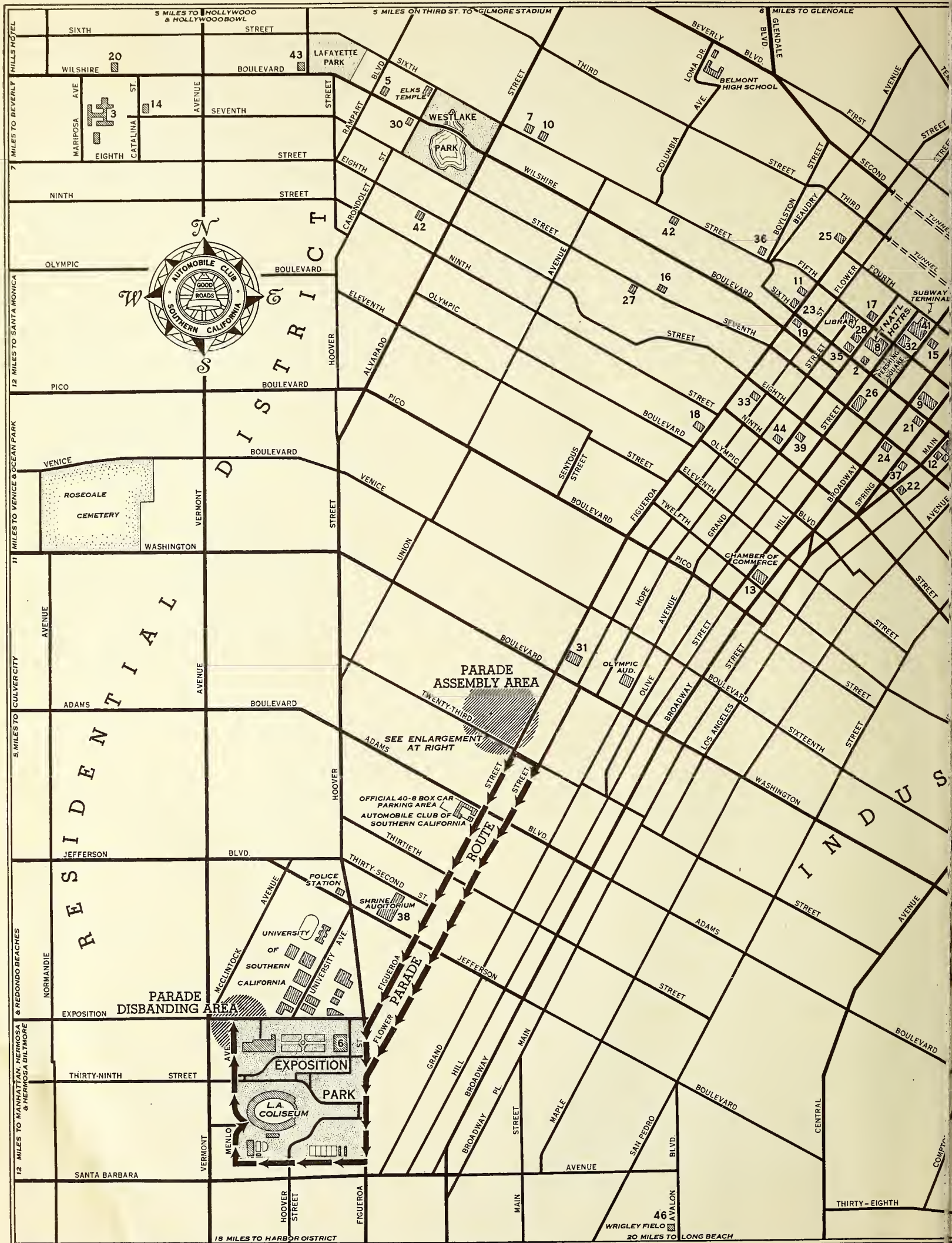
AMBULANCE SERVICE BY IVY H. OVERHOLTZER Richmond 6171

MEDICAL SUPPLIES through the courtesy of:  
 Horton and Converse Pharmacies, Los Angeles

SURGICAL SUPPLIES through the courtesy of:  
 Johnson and Johnson Company

DAY NURSERY AND HAVEN FOR LOST CHILDREN  
 The May Company Roof Garden  
 The May Co. Department Store  
 Eighth Street, Hill Street and Broadway

SURGICAL EQUIPMENT through the courtesy of:  
 Comrade Walter Root



PARADE ASSEMBLY AREA

PARADE DISBANDING AREA

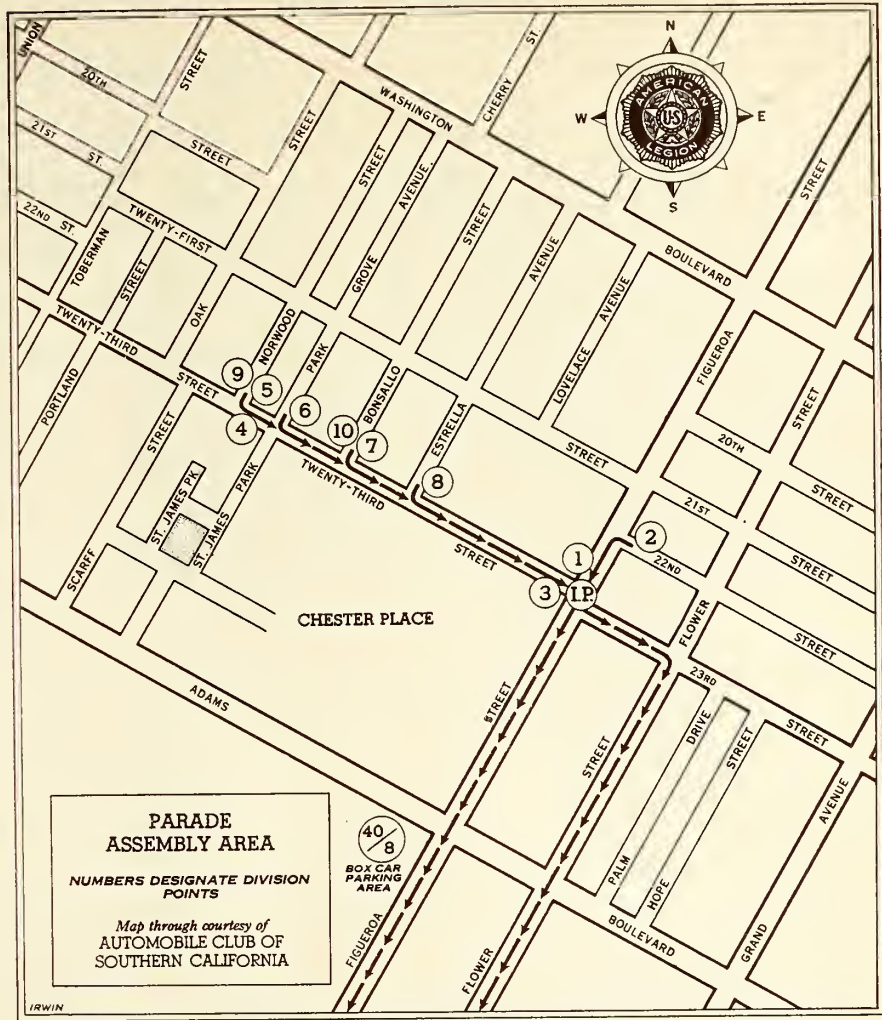
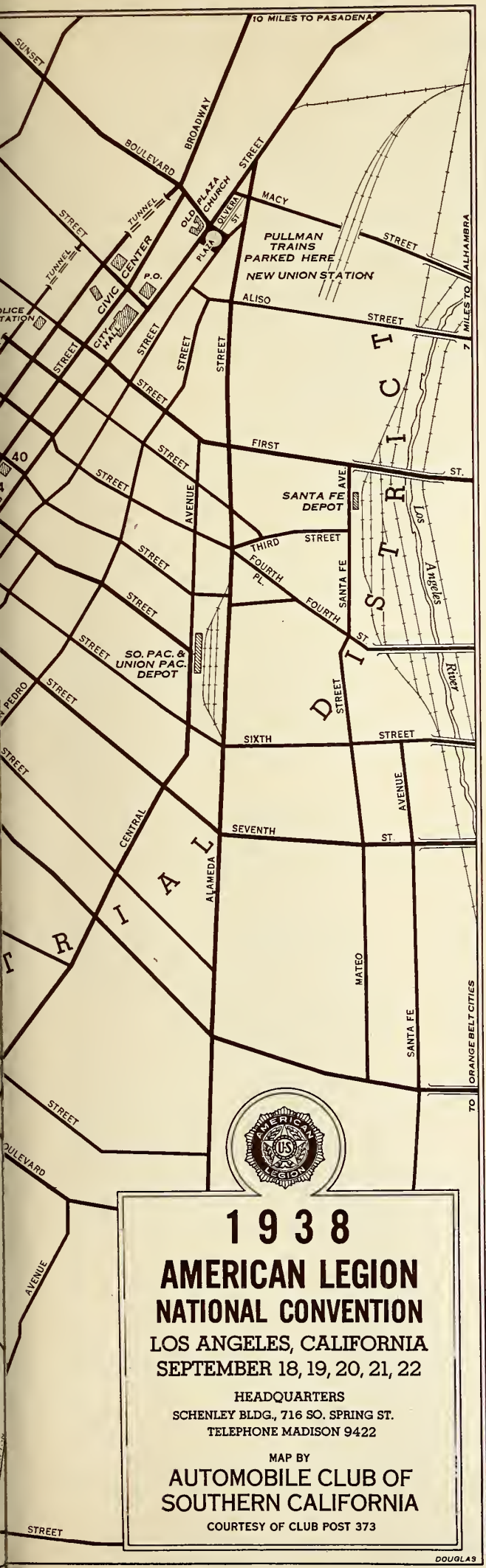
EXPOSITION PARK  
L.A. COLISEUM

OFFICIAL 40-8 BOX CAR PARKING AREA  
AUTOMOBILE CLUB OF SOUTHERN CALIFORNIA

SHRINE AUDITORIUM 38

40 WRIGHT FIELD  
20 MILES TO LONG BEACH





**INDEX TO NUMBERED HOTELS AND BUILDINGS ON GENERAL MAP**

- |   |   |
|---|---|
| 2. All Year Club<br>(Information Bureau)        | 25. La Tosca Hotel  |
| 3. Ambassador Hotel                             | 26. Los Angeles Athletic Club   |
| 4. Angelus Hotel                                | 27. Mayfair Hotel   |
| 5. Arcady Apt.-Hotel                            | 28. Mayflower Hotel   |
| 6. Armory                                       | 29. Pacific Electric Building   |
| 7. Barbara Hotel                                | 29a. Pacific Electric Auditorium<br>(Forty and Eight<br>Headquarters)                   |
| 8. Biltmore Hotel<br>(National Headquarters)    | 30. Park Wilshire Hotel-Apts.   |
| 9. Broadway-Spring Arcade<br>Bldg.              | 31. Patriotic Hall  |
| 10. Californian Hotel                           | 32. Philharmonic Auditorium   |
| 11. Carlton Hotel                               | 33. Ritz Hotel  |
| 12. Cecil Hotel                                 | 34. Rosslyn Hotel   |
| 13. Chamber of Commerce<br>(Information Bureau) | 35. Savoy Hotel   |
| 14. Chancellor Hotel                            | 36. St. Paul Hotel  |
| 15. Clark Hotel                                 | 37. Schenley Building<br>(National Convention<br>Headquarters)<br>716 So. Spring Street |
| 16. Commodore Hotel                             | 38. Shrine Auditorium   |
| 17. Edison Building                             | 39. Stillwell Hotel   |
| 18. Figueroa Hotel                              | 40. Stowell Hotel   |
| 19. Gates Hotel                                 | 41. Subway Terminal Bldg.   |
| 20. Gaylord Hotel                               | 42. Teris Hotel   |
| 21. Hayward Hotel                               | 43. Town House  |
| 22. Huntington Hotel                            | 44. Trinity Auditorium  |
| 23. Jonathan Club                               | 45. William Penn Hotel  |
| 24. Lankershim Hotel                            | 46. Wrigley Field   |



**1938**  
**AMERICAN LEGION**  
**NATIONAL CONVENTION**  
 LOS ANGELES, CALIFORNIA  
 SEPTEMBER 18, 19, 20, 21, 22

HEADQUARTERS  
 SCHENLEY BLDG., 716 SO. SPRING ST.  
 TELEPHONE MADISON 9422

MAP BY  
**AUTOMOBILE CLUB OF**  
**SOUTHERN CALIFORNIA**

COURTESY OF CLUB POST 373

*Official Program*  
**Nineteenth Promenade Nationale**  
**LA SOCIETE DES 40 HOMMES ET 8 CHEVAUX**  
 Los Angeles, California . . . September 18, 19, 20, 21, 1938

**SUNDAY, SEPTEMBER 18, 1938**

- Registration at Legion Booths and Pacific Electric Employees' Building, Los Angeles Street, South of Sixth Street. Registration fee Fifty Cents (50c) includes Promenade Nationale Badge.
- 5:00 p. m.—Meeting of Cheminots Nationaux (National Executive Committee), Pacific Electric Employees' Building, 4th Floor.
- 5:30 p. m.—Meeting of Committee on Credentials, P.E.E. Bldg.
- 5:30 p. m.—Meeting of Committee on Permanent Organization, P.E.E. Building.
- 5:30 p. m.—Meeting of Committee on Rules and Order, P.E.E. Building.
- 9:30 p. m.—Promenade Nationale Opening Session, Pacific Electric Building, Auditorium. Music by Band—to be provided.
- 10:00 p. m.—Call to Order by *Chef de Chemin de Fer* FRED G. FRASER.  
 Advancement of Colors.  
 Invocation by *Aumonier National* REV. ROBERT F. CHAPLER.  
 Reading of Promenade Call by Correspondent National.  
 Greetings:  
 JOHN R. QUINN, *President, Los Angeles Convention Corporation.*  
 E. SNAPPER INGRAM, *Chairman, Promenade Nationale General Committee.*  
 Address of Welcome: HON. FRANK F. MERRIAM, *Governor, State of California.*  
 HON. FRANK L. SHAW, *Mayor of Los Angeles.*  
 Greetings: JAMES E. DAVIS, *Chief of Police, Los Angeles.*  
 Greetings from The American Legion: *Voyageur* DANIEL J. DOHERTY, *National Commander.*  
 Response by *Chef de Chemin de Fer* FRED G. FRASER.
- 11:00 p. m.—Memorial Service. *Aumonier National* REV. ROBERT F. CHAPLER.
- 11:30 p. m.—Report on Committees:  
 1. Credentials.  
 2. Permanent Organization.  
 3. Rules and Order.
- 11:45 p. m.—Reports of Officers:  
 1. *Chef de Chemin de Fer* FRED G. FRASER.  
 2. *Commissaire Intendant National*, N. CARL NIELSEN.  
 3. *Correspondant National*, C. W. ARDERY.  
 4. *Historien National*, PHIL E. CLEMENTS.  
 5. *Avocat National*, FRED M. WANGER.  
 6. *Conducteur National*, THOMAS S. ESTABROOK.
- 12:15 a. m.—Announcements, Committee Appointments, etc.
- 12:30 a. m.—Retirement of Colors.  
 Recess.

**MONDAY, SEPTEMBER 19, 1938**

- 10:00 a. m.—Meeting of all Committees other than Permanent Organization, Credentials and Rules and Order. Pacific Electric Building, Instruction Rooms.
- 1:30 p. m.—Music by Band—to be provided.

**SECOND SESSION**

- 2:00 p. m.—Call to Order by *Chef de Chemin de Fer*, FRED G. FRASER.  
 Advancement of Colors.  
 Invocation by *Aumonier National*, REV. ROBERT F. CHAPLER.
- 2:10 p. m.—Reports of Committees:  
 1. Paraphernalia.  
 2. Voiture Activities.  
 3. Ritual.  
 4. Finance.  
 5. Child Welfare.  
 6. Resolutions.
- 4:00 p. m.—Retirement of Colors.  
 Recess.
- 7:00 p. m.—Forty and Eight Parade: Forms on Spring Street with head of column resting on Temple Street and using the area East and West of Spring Street and North of Sunset Boulevard for formation. The parade will move south on Spring Street to First Street, to Broadway, to Eighth Street, to Olive Street, to Fifth Street, to Grand Avenue and disband. Voyageurs going direct to Philharmonic Auditorium, Fifth and Olive Streets.
- 10:30 p. m.—*Promenade Nationale Wreck*—Philharmonic Auditorium, 5th and Olive Streets.

**TUESDAY, SEPTEMBER 20, 1938**

- 9:00 a. m.—Form with own Department for The American Legion Parade.

**WEDNESDAY, SEPTEMBER 21, 1938**

- 10:00 a. m.—Meetings of all Committees with unfinished business, especially Resolutions, Constitution and Trophies and Awards Committee. Pacific Electric Building Instruction Rooms.
- 6:30 p. m.—Music by Band—1939 Champions.

**FINAL SESSION**

- 2:00 p. m.—Call to Order by *Chef de Chemin de Fer* FRED G. FRASER.  
 Invocation by *Aumonier National* REV. ROBERT F. CHAPLER.
- 2:10 p. m.—Reports of Committees on:  
 1. Resolutions (Supplementary).  
 2. Trophies and Awards.  
 3. Constitution.
- 3:30 p. m.—New Business.
- 3:45 p. m.—Election of Officers.  
 Retirement of Colors.  
 Benediction by *Aumonier National* REV. ROBERT F. CHAPLER.  
 Adjournment.  
 Meeting of *Cheminots Nationaux* immediately upon adjournment of the Promenade Nationale.
- 6:30 p. m.—Forty and Eight Inaugural Banquet—Ambassador Hotel.

# Forty and Eight Parade

Assemble at Spring St. and Sunset  
 Escort of Police, JAMES E. DAVIS, *Chief of Police*  
 Grand Marshal, HARRY E. RANSOM, *Chef de Chemin de Fer 1937.*

## 1st DIVISION

Assemble in Sunset Blvd., North of Spring St.  
 Marshal, J. R. SULLIVAN, *Sous Chef de Chemin de Fer 1938.*

*Aides*

Los Angeles Police Band  
 FRED G. FRASER, *Chef de Chemin de Fer*  
 Chefs de Chemin de Fer Passe

Joseph A. Breen	Chas. A. Milles	Wm. D. Lyons
Edw. J. Eivers	Pel. St Goe Bissell	Sam R. Heller
George Dobson	John P. Conmy	Fred M. Fueker
S. M. Doyle	E. Snapper Ingram	
	<i>National Officers</i>	
C. W. Ardery	Rev. Robt. F. Chapeler	Harold W. Kenney
N. Carl Nielsen	T. S. Estabrook	Phil E. Clements
Fred Wanger	Henry H. Green	Ed J. Young

Promenade National Drum and Bugle Corps  
 Voiture 128, Metuchen, New Jersey

## 2nd DIVISION

Assemble in New High St., Sunset to Commercial St.  
 Marshal, ABE MURPHY GOLDSTEIN,  
*Sous Chef de Chemin de Fer 1938.*

*Aides*

- |                 |             |
|-----------------|-------------|
| 1. Pennsylvania | 2. Illinois |
|-----------------|-------------|

## 3rd DIVISION

Assemble in North Spring St., Sunset to Ord St.  
 Marshal, WILLIAM T. DOWN, *Sous Chef de Chemin de Fer 1938.*

*Aides*

- |             |                  |
|-------------|------------------|
| 3. Ohio     | 5. Indiana       |
| 4. New York | 6. Massachusetts |

## 4th DIVISION

Assemble in New High St., Sunset to Ord St.  
 Marshal, DR. WM. T. STEVENSON,  
*Sous Chef de Chemin de Fer, 1938.*

*Aides*

- |             |               |                |
|-------------|---------------|----------------|
| 7. Michigan | 9. Wisconsin  | 11. Washington |
| 8. Iowa     | 10. Minnesota | 12. Missouri   |

## 5th DIVISION

Assemble in New High, Ord to Alpine  
 Marshal, J. HOWARD O'NEILL,  
*Sous Chef de Chemin de Fer, 1938.*

*Aides*

- |                   |                       |
|-------------------|-----------------------|
| 13. Texas         | 34. Arkansas          |
| 14. W. Virginia   | 35. Kansas            |
| 15. No. Carolina  | 36. So. Carolina      |
| 16. Oregon        | 37. Maryland          |
| 17. Mississippi   | 38. Dist. of Columbia |
| 18. Florida       | 39. Utah              |
| 19. New Jersey    | 40. Idaho             |
| 20. Connecticut   | 41. Nevada            |
| 21. Maine         | 42. Rhode Island      |
| 22. Tennessee     | 43. Montana           |
| 23. Nebraska      | 44. Vermont           |
| 24. Louisiana     | 45. Delaware          |
| 25. Kentucky      | 46. Wyoming           |
| 26. Oklahoma      | 47. Alaska            |
| 27. Virginia      | 48. Hawaii            |
| 28. Arizona       | 49. France            |
| 29. Colorado      | 50. Panama            |
| 30. So. Dakota    | 51. Alabama           |
| 31. Georgia       | 52. New Mexico        |
| 32. No. Dakota    | 53. Mexico            |
| 33. New Hampshire |                       |

## 6th DIVISION

Assemble in Spring St., North side of Temple to Sunset Blvd.  
 Marshal, HARRY ROSENTHAL, *Sous Chef de Chemin de Fer 1938.*

*Aides*

54. California

## GENERAL PARADE ORDERS No. 1

1. The parade will be held Monday evening, September 19, 1938. The parade will be formed in six divisions, each division will be at its designated station ready to move out at 7 p.m.

2. Assembly will be from First St. to Ord on Spring St., New High, Commercial to Ord; Broadway, Sunset to Ord. All box cars, trains and features for all divisions will form on the east side of Spring St., Temple to Sunset, and will fall in with their respective states in the division to which assigned. The parade will move south on Spring St. to First, west on First to Broadway, south on Broadway to Eighth St., west on Eighth St. to Olive, north on Olive to Fifth St.

All vehicles and mom 40 et 8 entries will go west on Fifth St., to Grand Ave. and disband. All 40/8 marching units will clear Fifth St. and enter the Philharmonic Auditorium at the Olive St. entrance.

3. Uniforms for the parade will be smocks and chapeaux insofar as possible.

4. Only strictly 40/8 entries with the exception of white male musical organizations will be allowed to enter the Promenade Nationale Parade of the Nineteenth Promenade Nationale. Absolutely no women will be allowed in the box cars or in line of march, except bona fide members of musical organizations. Those violating this rule will be eliminated from the parade.

5. Grand Conducteur C. J. Robinson will be in charge of the forming and moving of the parade. He will pick his own assistants.

6. The colors shall be furled. Massed Colors and Standards shall be at the head of respective Departments, except when they are included as part of a musical organization.

7. Regulations for the formation of the parade are as follows:

- a. All department delegations will be headed by their Grande Officers and will march 8 abreast with sixty inches between ranks.
- b. The following distances will be maintained: (a) Twenty paces between divisions; (b) Ten paces between Staff Officers; (c) Ten paces between Grand Voitures; (d) Six paces between Grande Voitures Officers and front ranks of their Grande Voitures; (e) Six paces in the front and rear of each feature; (f) Guidon bearers will march three paces to the rear and one pace to the right of their leaders.
- c. Illumination will be furnished prior to the start of the march. One flare will be carried by every third marcher in the outside files. Use utmost care in handling so as not to damage the clothing of other marchers. Retain the spikes until the end of the parade where suitable containers will be provided for their disposal.
- d. Each Grande Chef de Gare will assign two contact Voyageurs who will act as liaison between the Grande Voiture and the Division Marshal. Such Voyageurs will report to the Division Marshal at 6 p.m.
- e. The Marshal for each division will report to the Parade Chief of Staff the strength of the Grande Voiture and number of musical units respectively, as soon as the formation of the division is completed—but in any event, not later than 6:45 p.m.
- f. Ambulances with doctors for first aid work will operate the length of the parade.
- g. No motor vehicles will be permitted in the parade without official authorization from the Chief of Staff.
- h. Message Center will be at the northwest corner of Temple and Spring St.
- i. The reviewing stand will be located on the east side of Olive St. south of Fifth St., on the right of the column.
- j. All box cars, locomotives and ancient and decrepit automobiles will report immediately upon arrival to Box Car Headquarters on the special parking lot at the Auto Club of Southern California, Figueroa St. and Adams Blvd., where ample parking space will be available throughout the entire Convention. On Monday afternoon, September 19, 1938, at 2:30 p.m., the judging of Locomotives and Box Cars as well as old autos will be held. All those desiring to enter must be on the lot by 12 noon of that day. Roy Northrup, Chairman of the Box Car Committee, will be in charge and will issue all parade instructions.
- k. **POSITIVELY NO UNSIGHTLY OR OBSCENE SIGNS OR DISPLAYS WILL BE ALLOWED OR TOLERATED.**

C. J. ROBINSON,  
 Chairman of Parade Committee.

C. J. ROBINSON, Chief of Staff.

# Official Program

## La Marche Nationale

### LA BOUTIQUE DES HUIT CHAPEAU ET QUARANTE FEMMES

Los Angeles, California . . . September 18, 19, 20, 21, 1938

SUNDAY, SEPTEMBER 18, 1938

REGISTRATION—BILTMORE HOTEL,

Eight and Forty Headquarters—Fee 50c

5:00 p. m.—NATIONAL POUVOIR MEETING — PATRIOTIC HALL, 1816 South Figueroa Street, Washington Hall.

Call to Order by *Le Chapeau National* MARY C. HAWS.

Pledge to the Flag, led by *La Concierge Nationale* RUTH ALLARD.

Invocation by *L'Aumonier National* CORINNE CRAIG.

Roll Call of States by *La Secretaire Nationale* PAULINE RAIRDON.

Ratification of Appointment of Marche Parliamentarian.

Introduction of National Officers, Marche Chairmen & Committees.

Report of Finance Committee, *Chairman* MOLLIE AVERILL.

Consideration of Budget proposed by Finance Committee.

Reading of Proposed Amendments to National Constitution and By-Laws, *Chairman* MARY McCLUNG.

Reading of Resolutions, *Chairman* ELLEN LOUISE WARREN.

New Business.

Adjournment.

7:00 p. m. DIVISIONAL CAUCUSES TO ELECT LES DEMI-CHAPEAUX NATIONAUX, from Eastern, Southern, Central, Northwestern, and Western Divisions, respectively, Patriotic Hall, 1816 So. Figueroa. See Bulletin Board for Meeting Places.

MONDAY, SEPTEMBER 19, 1938

REGISTRATION—EDISON BUILDING, 601 5th St., Fee 50c

4:00 p. m.—LA MARCHE NATIONALE, OPENING SESSION, EDISON BUILDING.

Processional of National Officers and Distinguished Guests.

Call to Order by *Le Chapeau National* MARY C. HAWS.

Colors Advanced; *La Concierge National* and Color Bearers.

Pledge of Allegiance to the Flag, led by *La Concierge Nationale* RUTH ALLARD.

Invocation by *L'Aumonier National* CORINNE CRAIG.

"*In Flanders Fields*" by *Le Demi-Chapeau National* LYLE TOOTHMAN.

"*America's Answer*" by *Le Demi-Chapeau National* GRACE STEVENSON.

Song, "*Long, Long Trail*" led by *Marche Music Chairman* IRENE BLUM.

Roll Call by *La Secretaire Nationale* PAULINE RAIRDON.

Reading of Call to La Marche Nationale.

Reading of minutes of La Marche Nationale, 1937.

Reading of minutes of Pouvoir Meeting, September 22, 1937.

Reading of minutes of Pouvoir Meeting, September 18, 1938.

Introduction of Les Officers Nationaux, Les Chapeaux Nationaux Passes other Distinguished Guests, Honorary Pages and La Marche Personnel.

Greetings from *General Chairman*, American Legion Auxiliary Convention MRS. MARTHA DECKER.

Greetings from General Chairman of La Marche Nationale, MRS. BEATRICE TRUMBULL and introduction of her Vice-Chairmen and Committee.

Initiation Ceremonial and Membership Obligation to Les Chapeaux Etrangers by *La Surintendante Nationale* BESSIE COOPER.

Report of Marche Committees:  
Permanent Organization, *Chairman* ANN DOBSON;

Rules and Order, *Chairman* LAURA ORTH;  
Credentials, *Chairman* VERLIE HONIG;

Greetings:

National Commander of the American Legion, MR. DANIEL J. DOHERTY;

National President of the American Legion Auxiliary, MRS. MALCOLM DOUGLAS;

Le Chef de Chemin de Fer La Societe des Quarante Hommes et Huit Chevaux, MR. FRED FRASER;

Department President of California, 1937-1938, MRS. MAX ELLISON;

Le Chapeau Departemental of California, GERTRUDE POWELL;

Adoption of Printed Reports:

Report of *Le Chapeau National* MARY C. HAWS;

Reports of Les Demi-Chapeaux Nationaux;

Eastern Division, ALMA HUNT;

Southern Division, FRANCES LAUGHLIN;

Central Division, LYLE TOOTHMAN;

Northwestern Division, GRAYCE O'CONNELL;

Western Division, GRACE STEVENSON;

Report of *La Secretaire-Caissiere Nationale* PAULINE RAIRDON.

Reports of:

*L'Archiviste Nationale*, HANNAH HOFFMAN;

*L'Aumonier National*, CORINNE CRAIG;

*La Concierge Nationale*, RUTH ALLARD;

*La Surintendante Nationale*, BESSIE COOPER.

Reports of Standing Committees:

Finance Committee, *Chairman* MOLLIE AVERILL; members of Committee, MARY E. MACAFEE, and EMILY FRANCKE.

Child Welfare, *Director*, MARY C. HAWS;

Area Chairmen:

Area A, EVA COLEMAN;

Area B, DORRIS AUSTIN;

Area C, WILDA FITZGIBBON;

Area D, ETHELYN BARRY;

Area E, DOROTHY STALDER;

National Hospital Activities, *Chairman* EDITH STOCKMAN.

World War Orphan's Educational Fund Chairman, *MARIETTA GREENLAW*;  
 Membership, *Chairman FLORENCE SLOAN*;  
 Ritual and Regalia, *Chairman GLADYS NEIBURG*;  
 Public Relations, *Chairman ELLEN LOUISE WARREN*;  
 Trophies and Awards, *Chairman PAULINE RAIDON*;  
 Report of the *Editor of the Hat Box*, *THELMA BAILEY*;  
 Memorial Service: *L'Aumonier National* *CORINNE CRAIG*;  
 New Business:  
 Report of National Constitution and By-Laws Committee, *Chairman MARY MCCLUNG*;  
 Report of Marche Resolutions Committee, *Chairman ELLEN LOUISE WARREN*;  
 Recommendations of National Officers;  
 Nomination and Election of Officers:  
 Le Chapeau National  
 L'Archiviste Nationale  
 L'Aumonier National  
 La Concierge Nationale  
 Ratification of election of Les Demi-Chapeaux Nationaux, elected in Divisional Caucuses, September 18th, 1938.  
 Presentation of newly elected officers.  
 Announcements.  
 Colors retired.  
 Adjournment.

9:30 p. m.—ANNUAL BANQUET OF LA BOUTIQUE des HUIT CHAPEAUX et QUARANTE FEMMES, Cabrillo Hotel.  
*Le Chapeau National* *MARY C. HAWS*, presiding.  
 Introduction of Distinguished Guests and National Officers.  
 Trophies and Awards Distribution.  
 Installation of newly elected officers.  
 Entertainment.

### WEDNESDAY, SEPTEMBER 21, 1938

5:00 p. m.—NATIONAL POUVOIR MEETING, Edison Building, 601 Fifth Street.  
 Call to order by *Le Chapeau National* *MARY C. HAWS*.  
 Unfinished business.  
 Presentation of newly elected officers, and new Chapeau National presides.  
 New business.  
 Adjournment.

#### INFORMATION HEADQUARTERS and LOST AND FOUND DIVISION

Room 502 Pacific Electric Building, 6th and Main Streets. Telephone MAdison 9422. Uniformed Guides.

#### MISSING PERSONS

Georgia Street Police Station. Telephone Mlchigan 5211, Station 2571, Los Angeles Police Dept.  
*LEO STROMME, Chairman*

## Registration Booths

American Legion Convention Corp., 716 South Spring  
 Subway Terminal Building, 423 South Hill Street  
 Biltmore Hotel, 515 South Olive  
 Ambassador Hotel, 3400 Wilshire  
 Mayfair Hotel, 1256 West Seventh Street  
 Rosslyn Hotel, 111 West Fifth Street  
 Hayward Hotel, Sixth and Spring  
 Lankershim Hotel, Seventh and Broadway  
 Union Station, Fifth and Central  
 Hollywood Legion Club House, 2035 N. Highland  
 Trinity Auditorium, 847 South Grand  
 Silverwood's, 6th and Broadway  
 Patriotic Hall, 1816 South Figueroa  
 Pacific Electric Building, 6th and Main, Ground Floor  
 Spring Arcade Building, Lobby  
 Chamber of Commerce, Santa Monica  
 Long Beach War Memorial Building  
 Eastside Headquarters, 5111 So. Central Avenue

## Information Booths

American Legion Convention Corp., 716 South Spring  
 Subway Terminal Building (Central Booth) Ground Floor  
 Biltmore Hotel, 515 South Olive  
 Union Station  
 Ambassador Hotel, 3400 Wilshire  
 Mayfair Hotel, 1256 West Seventh Street  
 Pacific Electric, 6th and Main, Ground Floor  
 Hollywood Legion Club House, 2035 North Highland  
 Spring Arcade Building, Lobby, between 5th and 6th Streets  
 Santa Fe Station, 2nd and Santa Fe  
 Southern Pacific and Union Pacific, 5th and Central  
 Greyhound Bus Terminal, 6th and Los Angeles Streets  
 Rosslyn Hotel, 111 West Fifth Street  
 Hayward Hotel, Sixth and Spring  
 Lankershim Hotel, Seventh and Broadway  
 Stillwell Hotel, 836 South Grand  
 Philharmonic Auditorium, Fifth and Olive  
 Patriotic Hall, 1816 South Figueroa  
 Trinity Auditorium  
 Santa Monica Chamber of Commerce  
 Long Beach War Memorial Building  
 Los Angeles Times  
 Los Angeles Examiner

## OFFICIAL PHOTOGRAPHERS

MILTON AND THOMPSON

Headquarters: Pershing Square, Across Street from Biltmore Hotel.

Official photographs of all pictures taken will be on display at Pershing Square, Ambassador Hotel and Philharmonic Auditorium. Order pictures only from Official Photographer, and get a receipt.

Official group photographs of uniformed bodies may be taken at West Adams and Figueroa Streets on Tuesday at least one half hour before your Unit parades also by appointment in Pershing Square, opposite Biltmore Hotel.

#### SERVICE COMMITTEE HEADQUARTERS and PROVOST MARSHAL'S OFFICE

National Convention, The American Legion  
 Los Angeles, California, 1938

5th Floor, Pacific Electric Building  
 6th & Main Streets, Los Angeles.  
 Telephone: MAdison 9422.

All matters of Law Observance, and Law Enforcement.  
*CAPTAIN C. D. BAYLIS, Provost Marshal.*

# Official Program

## Religious And Patriotic Service

SUNDAY, September 18, 1938 — 7:00 P.M.

HOLLYWOOD BOWL, HOLLYWOOD, CALIF.

Directed by BRUCE MERMAN

Concert—Hollywood Legion Band—JOE COLLING, Director  
Massed Groups of Choral Contenders—"In Flanders Field"  
Special Rendition—San Gabriel Drum and Bugle Corps (National Champions)

Call to Order—DANIEL J. DOHERTY, National Commander

Advancement of Massed Colors

"Hymn Before Action"—Chanters Post

Invocation—REV. FRANK J. LAWLER, National Chaplain

Introduction of HERBERT MARSHALL

"Birth of the American Legion"—Allied Soldiers, American Legion and Affiliated Organizations

Hollywood S. A. L. Choir

"Trees"—Sung by BOBBY BREEN

"The Golden Lady"—LEE FREEMAN with all-star cast:

*Gold Star Mother*.....FAY BAINTER  
*Her son*.....JOHN HOWARD  
*A son*.....ROBERT PRESTON  
*Newsboy*.....JACKIE MORAN

"Flanders Field" by EDWARD ARNOLD

"America's Answer" by BOBBY BREEN

"My Buddy" by RICHARD STANLEY

The Vision on the Hills

"Star Spangled Banner" led by RICHARD STANLEY

Benediction

Taps—Arranged by AIME REINWALD

Pigeons donated by Capt. Ray Del Hauer, Wells L. Baker

## Denominational Church Services

SATURDAY, SEPTEMBER 17

LIBERAL JEWISH—Temple B'Nai B'Rith, 636 So. Hobart, Rabbi Edgar F. Magnin.

ORTHODOX JEWISH—Breed St. Synagogue, 247 No. Breed. Rabbi O. Zilberstein.

SUNDAY, SEPTEMBER 18

11:00 a. m.—Mass at St. Vibiana's Cathedral, 2nd and Main, Archbishop John J. Cantwell.

11:00 a. m.—Services at St. Paul's Pro Cathedral, 615 So. Figueroa, Bishop Bertrand J. Stevens.

11:00 a. m.—Services at First M. E. Church, 8th and Hope, Dr. Roy Smith.

11:00 a. m.—Services at Immanuel Presbyterian, Wilshire at Berendo, Dr. Herbert Booth Smith.

11:00 a. m.—Temple Baptist, Philharmonic Auditorium, Dr. Ralph Walker.

11:00 a. m.—Meeting, 3rd Church of Christ Scientist, 734 So. Hope.

10:30 a. m.—Services, Angelus Temple, Aimee Semple McPherson.

## Sons of the American Legion

JOHN FOX, *Chairman*

JOHN G. TAYLOR, *Vice-Chairman*

SUNDAY, SEPTEMBER 18, 1938

1 to 5 p. m.—Meeting—Greek Theatre, Griffith Park.

MONDAY, SEPTEMBER 19, 1938

9:00 a. m.—Drum Corps Competition—Rancho Cienega Playground, La Brea and Exposition Blvd.

National Rifle Competition—Burbank Range.  
Visit to Griffith Park Planetarium.

TUESDAY, SEPTEMBER 20, 1938

Official Parade—THE AMERICAN LEGION.

WEDNESDAY, SEPTEMBER 21, 1938

Fleet Day—guests of the United States Navy.

THURSDAY, SEPTEMBER 22, 1938

Athletic Day at Rancho Cienega Playgrounds.  
Visit to Douglas Aircraft Factory for visiting Sons.

## Air Activities

NORMAN "PAT" LYONS, *Chairman*

SEPTEMBER 18 TO 20

All former air service men register at Air Activities Headquarters, Hotel Clark, 426 So. Hill Street, on September 20th.

During the parade there will be a demonstration of 300 Army Airplanes over the line of march.

SEPTEMBER 20, AT 7:30 P. M.

Banquet at The Palomar, 2nd and Vermont. Honored guests will be Major General Oscar Westover, U. S. Army, and Admiral Cook, U. S. Navy. Beauty contest and entertainment during banquet.

SEPTEMBER 23

Demonstration of 300 Naval planes over United States Fleet at Los Angeles Harbor. Watch papers for time.

## Eastside Activities

GEORGE BURLSON, *Chairman*

SUNDAY, SEPTEMBER 18

8:00 a. m.—Los Angeles Fellowship Breakfast for Visiting Delegates and Guests, Y.M.C.A., 1006 E. 28th Street.

3:00 to 7:00 p. m.—Ladies Auxiliary Reception, 1050 East 50th Street

WEDNESDAY, SEPTEMBER 21

7:30 p. m.—Reunions Dinner, Club Alabam, 4215 So. Central Avenue

50 Cents per Plate  
WEDNESDAY, SEPTEMBER 21

9:00 p. m. to 3 a. m.—Grand Convention Ball, Elks Auditorium, 4016 So. Central Avenue. Free to all Delegates, Alternates and holders of Convention Registration Tickets

## Reunions

CENTRAL REUNION REGISTRATION HEADQUARTERS  
BROADWAY-SPRING ARCADE BLDG.

Enter from Broadway or Spring Streets between 5th and 6th Sts.

Telephone MADison 9422

ADOLPH N. SUTRO, *General Chairman*

Information available at Central Reunion Headquarters as to the Time and Place of every Reunion Meeting and Banquet, together with the name and address of every chairman of each and every Division or Unit of the Army, Navy or Marine Corps that participated in the World War.

REGISTRATIONS START SATURDAY, SEPTEMBER 19th, at 9:00 a. m. Banquets start on September 18th.

Do not fail to attend the reunion of your own organization. Be sure to register immediately at your Division or Unit Headquarters and secure your ticket before they are all sold.

REPETITION OF ARMISTICE NIGHT IN PARIS

In addition to the regular Reunion Banquets and Meetings you may secure information at Reunion Headquarters as to the Time and Place of assembly of your particular organization on the night of September 21st, at 11:45 p. m., when there will be a "Grand Finale" of the Reunion's Program. This is not a parade, but will be a "Carnival of Fun" celebration of the original Armistice Night in Paris. The participation of all organizations is desired to make this a gala and momentous occasion.

ENGINEERS (Not part of Divisions)

DANIEL D. COONS, *Chairman*

Headquarters: Central Reunion Headquarters

NAVY REUNIONS

MALCOLM LETTS, *Chairman*

Headquarters: 326 South Spring Street

MARINE CORPS REUNIONS

JOHN M. GAULT, *Chairman*

Headquarters: Omar's Dome, 440 South Hill Street

AIR SERVICE REUNIONS.

DUDLEY STEELE, *Chairman*

Headquarters: Clark Hotel, 426 South Hill St. Headquarters for all Air Service Units of Army, Navy, Marine Corps and Allied Forces

ARTILLERY (Not part of Divisions)

CHARLES F. HENDRICKX, *Chairman*

Headquarters: 617 Venice Blvd.

MEDICAL CORPS (Not part of Divisions)

DR. CHAS. W. DECKER, *Chairman*

Headquarters: Central Reunion Headquarters

COLORED UNITS REUNION

JEROME L. HUBERT, *Chairman*

Headquarters: 5111 South Central Avenue

MISCELLANEOUS REUNIONS

Central Reunion Headquarters

# Schedule of Contests

ROBERT MITCHELL, *General Chairman*; JACK GUYOT, *General Vice-Chairman*; NORMAN D. DUNBAR, *General Secretary*

## SUNDAY, SEPTEMBER 18, 1938

2:00 p. m.—Choral—DR. W. DREW CHIPMAN, *Chairman*  
Polytechnic High School Auditorium

## MONDAY, SEPTEMBER 19, 1938

7:00 a. m.—Drum, Fife and Bugle Corps  
GEORGE F. CASE, *Chairman*  
Los Angeles Memorial Coliseum

7:00 p. m.—Finals

7:30 a. m.—Rifle Drill Team—V. B. REDMOND, *Chairman*  
Armory, California National Guard, Exposition Park

7:00 a. m.—Golf—GENE STANLEY, *Chairman*  
Oakmont Country Club, Glendale

8:00 a. m.—Rifle—A. J. JOHNSON, *Chairman*  
Burbank Post No. 150, American Legion  
Rifle Club Range, Burbank

9:00 a. m.—Sons of The American Legion—Drum, Fife and

Bugle Corps. ROBERT SNYDER, *Chairman*  
Rancho Cienega Playground

10:00 a. m.—Band—DAVE J. MALLOY, *Chairman*  
Band Shell, Exposition Park

## TUESDAY, SEPTEMBER 20, 1938

Parade—Color Guards—Judged during Parade  
Parade—Junior and Junior Auxiliary Sponsored Units—Judged during parade for appearance and music.

## WEDNESDAY, SEPTEMBER 21, 1938

9:00 a. m.—Bowling—W. E. WEYERMAN, *Chairman*  
Hollywood Recreation, 1539 No. Vine St.  
To continue until midnight and next day until conclusion.

8:30 a. m.—Pistol—ROSS R. McDONALD, *Chairman*  
L. A. Police Department Range, Elysian Park

NOTE: Information regarding above contests may be had at Contest Committee Headquarters, Biltmore Hotel. Phone MADison 9422.

# Trophies and Awards

A. B. SHORE, *Chairman*

Contests Awards to be made on Thursday, September 22nd, 1938 at Philharmonic Auditorium.

### AMERICANISM

NATIONAL AWARD  
William Randolph Hearst Trophy

### BAND CONTEST

NATIONAL AWARDS

1st Prize . . . . .	\$1,000.00	3rd Prize . . . . .	\$250.00
2nd Prize . . . . .	500.00	4th Prize . . . . .	100.00

### LOCAL AWARDS

Governor Frank F. Merriam Trophy  
Manchester Boddy Trophy

### COLOR GUARD

#### NATIONAL AWARDS

Designation—Official American Legion Color Guard and Custody of Glenn R. Hillis Trophy until following Convention.

#### LOCAL AWARDS

Los Angeles Railway Company Trophy

### DRUM, FIFE AND BUGLE CORPS CONTEST

#### NATIONAL AWARDS

1st Prize . . . . .	\$1,250.00	3rd Prize . . . . .	\$350.00
2nd Prize . . . . .	700.00	4th Prize . . . . .	200.00

#### LOCAL AWARDS

Twentieth-Century Fox Film Corporation Trophy

### RIFLE DRILL TEAM

#### NATIONAL AWARDS

1st Prize . . . . .	\$200.00	2nd Prize . . . . .	\$100.00
---------------------	----------	---------------------	----------

#### LOCAL AWARDS

Anheuser-Busch Trophy

### SONS OF THE AMERICAN LEGION

#### DRUM, FIFE AND BUGLE CORPS

#### NATIONAL AWARDS

1st Prize . . . . .	\$250.00	2nd Prize . . . . .	\$150.00
3rd Prize . . . . .	\$100.00		

#### LOCAL AWARDS

Joe E. Brown Trophies (2)

Douglas Aircraft Corporation Trophies (3)

Gilmore Oil Trophy

Mayor Frank L. Shaw Trophy

Fred H. Sincok Trophies (2)

Sophie Tucker Trophy

### BOWLING CONTEST

California Fruit Growers Association (Sunkist) Trophy

Department of Water and Power, City of Los Angeles Trophies (3)

Hollywood Recreation Trophy

Hollywood Turf Club Trophy

Parkeyarkarkus Trophy

Roosevelt Hotel Trophy

### CHORAL CONTEST

Eddie Cantor Trophy

Ted Lewis Trophy

### GOLF CONTEST

Brown Derby Trophy  
California Portland Cement Co. Trophies (2)  
Le Roy Prinz Trophy  
Ralphs Grocery Company Trophy  
Riverside Portland Cement Co. Trophies (2)

### PISTOL CONTEST

California Portland Cement Co. Trophy  
California Title Insurance Association Trophy  
Chief of Police James E. Davis Trophy  
Helms Bakeries Trophy  
Riverside Portland Cement Co. Trophy

### RIFLE CONTEST

Sheriff E. W. "Gene" Biscailuz Trophy  
California Portland Cement Co. Trophy  
Riverside Portland Cement Co. Trophy  
Los Angeles Soap Company Trophy

### SPECIAL AWARDS FOR LADIES

Adohr Creamery Trophy  
Max Factor Trophy  
Southern California Edison Trophy

### BEST SENIOR PARADE UNIT

Fox West Coast Theatres Corporation Trophy

# 40 and 8 Trophies and Awards

<i>Donor of Trophy</i>	<i>Award</i>	<i>Unit</i>
Pierce Bros.	1st	Best 40 et 8 Band
Thos. P. Scully	2nd	Best 40 et 8 Band
Curland Bros.	3rd	Best 40 et 8 Band
Gen. W. P. Story	1st	Best Drum Corps
Royal Jewelers	2nd	Best Drum Corps
The New Waldorf	3rd	Best Drum Corps
Schreffler Co.	1st	Best Drum Major
L. A. Railway	1st	Best Box Car
Armour & Co.	2nd	Best Box Car
Fafnir Bearing Co.	1st	Best Non-40 et 8 Band
Ganns Vending Co.	1st	Box Car Traveling Greatest Distance
Brooks Clothing Co.	1st	Grand Voiture—Most in Line
W. G. Bonelli	2nd	Grand Voiture—Most in Line
The May Co.	1st	Best Marching Unit
Gladding McBean	1st	Most Unique Feature in Parade
Ambassador Hotel	1st	Best Color Guard
College Inn Cafe	2nd	Best Color Guard
Capt. Hutchinson	1st	Best Popeye
Burbank Theatre	1st	Most Unique Entry—40 et 8
E. Snapper Ingram	Petpetual	Special
Foreman & Clark	1st	Best Sons of Legion Band
Watson Co.	1st	Best Drum & Bugle Corps Non-40 et 8
Million Dollar Theatre	1st	Best Sons of Legion Drum & Bugle Corps
So. Cal. Trophy Co.	Special	

# How to Reach Convention Meeting Places

## AMERICAN LEGION CONVENTION HEADQUARTERS

Schenley Bldg., 716 So. Spring St. Phone MAdison 9422. Where any information concerning the Convention not listed in the Program may be had. Take any "Red" or "Yellow" car or Bus downtown.

## HOLLYWOOD BOWL

Where memorial services will be held Sunday evening 7:00 p.m. Pacific Electric "Red" cars, "Highland Avenue Local." Cars leave at frequent intervals from Subway Terminal Station, 423 South Hill Street. (Seats reserved until 7:30 p.m. only).

## SHRINE AUDITORIUM

605 West Jefferson Street at Royal,—Where opening session of the American Legion will be held. (This is joint session of American Legion and American Legion Auxiliary. Take Los Angeles Ry. "Yellow" "J" Car or Figueroa Bus Coach No. 49.

## PHILHARMONIC AUDITORIUM

Fifth at Olive Streets, opposite Pershing Square and Biltmore Hotel. (Any "Red" or "Yellow" car or bus going downtown.)—Where Business Session of American Legion Convention will be held on Wednesday and Thursday.

## TRINITY AUDITORIUM

847 South Grand Avenue,—Where American Legion Auxiliary Convention will be held. Take "Yellow" cars "J" or "N" to Ninth Street and Grand Avenue.

## LOS ANGELES COLISEUM

3911 South Figueroa Street and *Exposition Park*, scene of Convention Parade stands, Drum and Bugle Corps Contest, Band and Rifle Drill

Contests. Take "Yellow" cars "5"—"9"—"10"—"V"—"U"—"K" or Figueroa Bus Coach No. 49.

## PACIFIC ELECTRIC EMPLOYEES' BUILDING

Los Angeles Street just south of 6th Street—Where 40-8 Convention sessions will be held. Take any "Red" or "Yellow" cars or Bus lines downtown. (Los Angeles Street is first street east of Main Street.)

## EDISON BUILDING

601 Fifth Street at Grand Avenue,—Where business sessions of the 8 and 40 will be held. Take yellow line "U" or "D" cars or any Yellow or Red car or bus downtown.

## BILTMORE HOTEL

515 South Olive Street, opposite Pershing Square. Take any "Red" or "Yellow" car, or Bus downtown.

## PATRIOTIC HALL

1816 South Figueroa Street,—Where National Pouvoir Meeting of the 8 and 40 will be held. Take Yellow Cars "U" or "W" or Figueroa Bus Coach No. 49.

## GILMORE STADIUM

100 North Fairfax Avenue,—Where the "Night of Champions" will be held on Monday night. Take Beverly Blvd. Coach No. 44.

## GREEK THEATRE

North Vermont Avenue,—Where Sons of the American Legion Meeting will be held. Take Yellow Cars, "V" or "L" or Hollywood "Red" cars and transfer to Bus Coach No. 86.

## PLANETARIUM

Same direction for reaching Greek Theatre.

## Studio Trip

### SEE THE INSIDE OF WARNER BROS. STUDIO

On The American Legion Special Studio Tour.

FOUR DAYS ONLY—Sept. 19th to 22nd

Parlor Cars leave Olive Street Entrance Biltmore Hotel  
9 a.m. - 10 a.m. - 11 a.m. - 1 p.m. - 2 p.m. - 3 p.m.

— FARE \$1.50 —

TANNER-GRAY LINE MOTOR TOURS

Official American Legion Sightseeing Co. Phone MUtual 3111

## Parade of Movie Stars

Wednesday Night, 8:30 P.M. at Los Angeles Memorial Coliseum  
Greatest Assembly of Motion Picture Celebrities the World  
Has Ever Seen

### SPECTACULAR FIREWORKS

Fanchon & Marco Stage Revue — 60 Dazzling Hollywood Beauties  
will dance on one mammoth stage

Masters of Ceremonies:

JOE E. BROWN

EDDIE CANTOR

Get Tickets Now — Do Not Miss This Marvelous Spectacle

## Delegation Headquarters

### National Headquarters—Hotel Biltmore

Departments	Hotels	Departments	Hotels
Mississippi . . . . .	Biltmore	Oregon . . . . .	Ritz
Louisiana . . . . .	Biltmore	Illinois . . . . .	Clark
New Mexico . . . . .	Rosslin	Montana . . . . .	Clark
Maryland . . . . .	Biltmore	Ohio . . . . .	Mayfair
Wisconsin . . . . .	Biltmore	New York . . . . .	Rosslin
Idaho . . . . .	Biltmore	Connecticut . . . . .	Carlton
Georgia . . . . .	Biltmore	Michigan . . . . .	Figueroa
Florida . . . . .	Lankershim	Missouri . . . . .	Rosslin
New Hampshire . . . . .	Biltmore	Delaware . . . . .	Rosslin
District of Columbia . . . . .	Biltmore	Nebraska . . . . .	Savoy
Indiana . . . . .	Clark	Rhode Island . . . . .	Teris
Virginia . . . . .	Biltmore	Kansas . . . . .	Teris
Maine . . . . .	Biltmore	Pennsylvania . . . . .	Ambassador & Cecil
Colorado . . . . .	Rosslin	Vermont . . . . .	Stowell
Iowa . . . . .	Commodore	South Dakota . . . . .	St. Paul
Washington . . . . .	Biltmore	Tennessee . . . . .	Rosslin
Minnesota . . . . .	Biltmore	Nevada . . . . .	Biltmore
California . . . . .	Hayward	Wyoming . . . . .	Stowell
Arkansas . . . . .	Hayward	South Carolina . . . . .	Stowell
Arizona . . . . .	Biltmore	North Dakota . . . . .	Californian
North Carolina . . . . .	Biltmore	Utah . . . . .	Barbara
New Jersey . . . . .	Clark	Massachusetts . . . . .	Ambassador
Texas . . . . .	Hayward	Kentucky . . . . .	Stillwell
Oklahoma . . . . .	Hayward	Alabama . . . . .	Gates
West Virginia . . . . .	Hayward		

## Appreciation

- American Air Lines
- American Seating Co.
- Andersons Flower Shoppe
- Associated Oil Co.
- Athletic Club Flower Shoppe
- Automobile Club of Southern California
- Board of Education, City of Los Angeles
- Board of Public Works, City of Los Angeles
- Board of Supervisors, County of Los Angeles
- Boy Scouts of America
- Broadway Florist
- California Floral Co.
- Chamber of Commerce of Los Angeles
- City Council of Los Angeles
- Department of Parks and Playgrounds, City of Los Angeles
- The Ford Motor Co.
- Gardners Flower Shoppe
- Hollywood Bowl Assn.
- Jewel Florist Co.
- Loretta Flower Shoppe
- Metro-Goldwyn-Mayer Studios
- Mimeographing Supply Co.
- Paramount Pictures Inc. Studios
- Redwood Empire Association
- Retail Merchants Credit Association of Los Angeles
- Seagram-Distillers Corp.
- Schenley Products Co.
- L. C. Smith & Corona Typewriters Inc.
- Standard Oil Co. of California
- System Auto Parks & Garages Inc.
- United Air Lines
- Warner Bros. First National Studios

## AMERICAN LEGION CONVENTION CORPORATION HEADQUARTERS

Schenley Building

716 South Spring Street

MAdison 9422