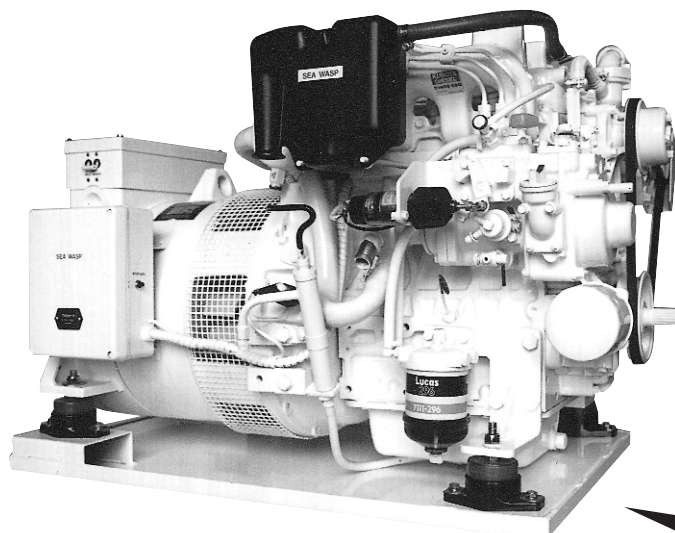


Generating power with pleasure

SEA WASP



Proudly built in
Australia



FREE
14 K.V.A.
UPGRADE

12.5 K.V.A. Model SW. 10000

Electrical Output

12.5 K.V.A. (10.0K.W. @ 0.8 Power Factor).

Speed

1500 R.P.M. - 50Hz (1800 R.P.M. - 60Hz).

Voltage Connections

(1) Single (1) Phase, 240 Volt - 50Hz.

(2) Three (3) Phase, 415/240 Volt - 50Hz.

(3) Other voltages and frequencies available.

Generator Design

Brushless, drip proof construction, Four pole revolving field, class 'F' Insulation.

Build Specifications.

C.E.I. 2-3, I.E.C. 34.1, U.D.E. 0530, BS 4999.

Generator Output	12.5 K.V.A. (10.0K.W.)	H.P. Continuous(DIN)	17.2 H.P. @25°C
Generator Model	15 K.V.A. Brushless	H.P. Standby	19.4 H.P. @25°C
Engine Model	Kubota D.1703 E.B.G.2.	Governing	Mechanical Flyweight
Engine Type	Water Cooled 4 Cycle Diesel	Cooling System	Fresh Water Heat Exchanged
No. of Cylinders	Three (3)	Starting System	Electrical 12V 1.4 K.W
Bore and Stroke	87 x 92.4mm	Battery Charging	12 Volt, 480 Watt
Total Displacement	1647 C.C.	Lub. Oil Capacity	5.6Litres
Full Load Speed	1500 R.P.M.	Fuel Consumption	3.5 Litres/H @ Full Load
Fuel Injection Pump	Bosch K. Type Mini	Noise Levels (open)	74 dBA @ 5 metres
Operating Angle	20°C in any direction (cont.)	Noise Levels (Silenced)	63 dBA @ 5 metres

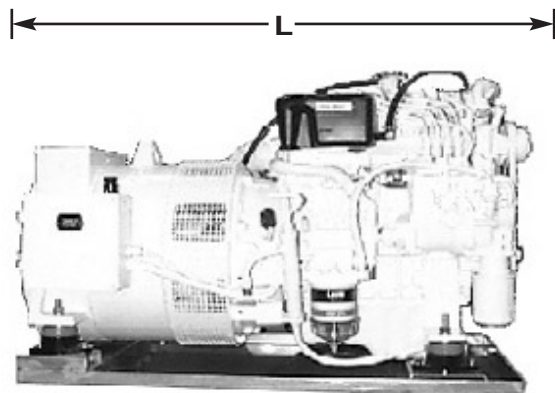
Marine Generating Sets

standard features

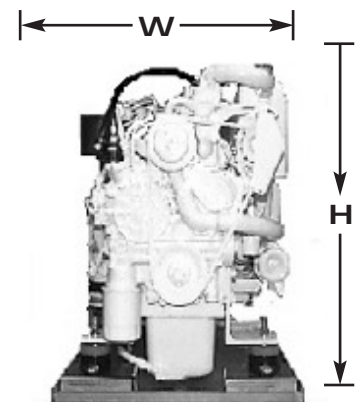
- 1 Fresh water cooled, Diesel engine.
- 2 Fresh water cooled manifold.
- 3 Wet exhaust (standard).
- 4 Dry exhaust (in lieu of wet).
- 5 3mm thick zinc steel tray base,
- 6 Anti-vibration mounts (4) fitted.
- 7 12 volt battery charging alternator.
- 8 12 volt D.C. control circuit breaker.
- 9 A.C. load circuit breaker.
- 10 Sump oil pump fitted.
- 11 Engine hours run meter.
- 12 Fuel filter (water separator).
- 13 Fuel lift pump (60cms lift).
- 14 High water temperature shutdown.
- 15 Low engine oil pressure shutdown.
- 16 High exhaust temperature shutdown.
- 17 Remote mounting starting module (standard).
- 18 Silenced models supplied with remote and local starting modules.
- 19 All connections outside sound shield.

optional equipment

- 1 Below waterline anti-syphon installation kit.
- 2 Water lock muffler.
- 3 12 volt D.C. electric fuel pump.
- 4 240 volt bulkhead mounting switchboard with ship-shore change over switch, voltmeter, ammeter, frequency meter, two-pole main circuit breaker, five (5) two-pole individual load circuit breakers.



Open Model



Silenced Model

Dimensions - 1-3 phase

Model	Length L (mm)	Width W (mm)	Height H (mm)	Weight Kg (wet)
SW10000 (12.5K.V.A.)				
Open Model	995	570	690	348
Silenced Model	1100	670	720	398

Distributed by:

Manufactured by:

Sea Wasp Australia

PO Box 863, Wynnum Qld 4178
Phone: (07) 3907 0708 Fax: (07) 3907 0709
www.seawasp.com.au