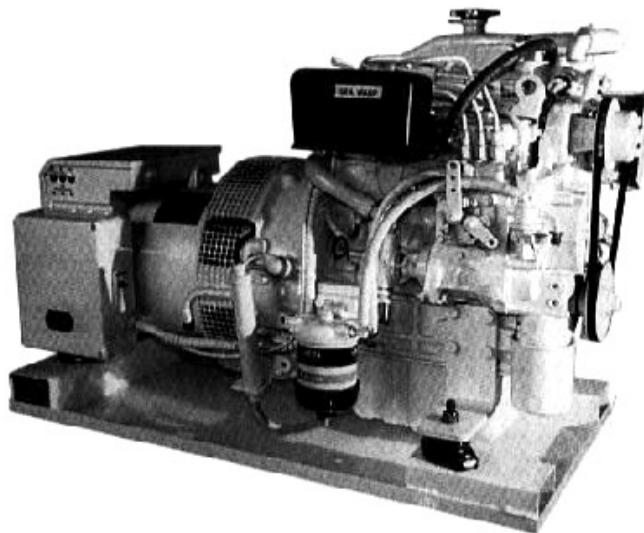


Generating power with pleasure

SEA WASP



*Proudly built in
Australia*



8.0 K.V.A. Model SW. 6400

Electrical Output

8.0 K.V.A. (6.4K.W. @ 0.8 Power Factor).

Speed

1500 R.P.M. - 50HZ (1800 R.P.M. - 60HZ).

Voltage Connections

- (1) Single (1) Phase, 240 Volt - 50HZ.
- (2) Three (3) Phase, 415/240 Volt - 50HZ.
- (3) Other voltages and frequencies available.

Generator Design

Brushless, Drip Proof Construction, 4 Pole Revolving Field, Class 'F' Insulation.

Build Specifications

C.E.I. 2-3, I.E.C. 34.1, U.D.E. 0530, BS 4999.

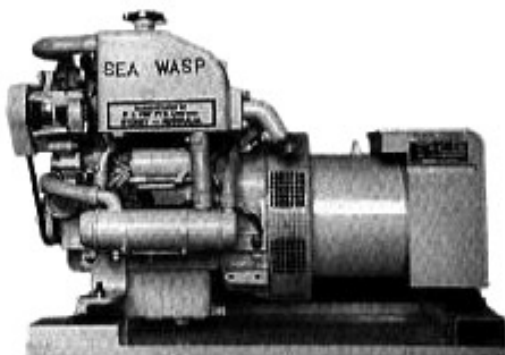
Generator Output	8.0 K.V.A. (6.4 K.W.)	H.P.(MAX)	10.0 H.P. @25°C
Generator Model	9.0 K.V.A. Brushless	Governing	Mechanical Flyweight
Engine Model	Kubota D.905 E.B.G.2.	Cooling System	Fresh Water Heat Exchanged
Engine Type	Water Cooled 4 Cycle Diesel	Starting System	Electrical 12V 1.0 K.W.
No. of Cylinders	Three (3)	Battery Charging	12V, 360Watt
Bore and Stroke	72 x 73.6mm	Lub. Oil Capacity	5.1Litres
Total Displacement	898 C.C.	Fuel Consumption	2.4 Litres/H @ Full Load
Full Load Speed	1500 R.P.M.	Noise Levels (Open)	73 dBA @ 5 metres
Fuel Injection Pump	Bosch P.F.R. M.D. Pump	Noise Levels (Silenced)	61 dBA @ 5 metres
Operating Angle	20°C in any direction (cont.)		

standard features

- 1 Fresh water cooled, Diesel engine.
- 2 Fresh water cooled manifold.
- 3 Wet exhaust (standard).
- 4 Dry exhaust (in lieu of wet).
- 5 3mm thick zinc steel tray base,
- 6 Anti-vibration mounts (4) fitted.
- 7 12 volt battery charging alternator.
- 8 12 volt D.C. control circuit breaker.
- 9 A.C. load circuit breaker.
- 10 Sump oil pump fitted.
- 11 Engine hours run meter.
- 12 Fuel filter (water separator).
- 13 Fuel lift pump (60cms lift).
- 14 High water temperature shutdown.
- 15 Low engine oil pressure shutdown.
- 16 High exhaust temperature shutdown.
- 17 Remote mounting starting module (standard).
- 18 Silenced models supplied with remote and local starting modules.
- 19 All connections outside sound shield.

optional equipment

- 1 Below waterline anti-syphon installation kit.
- 2 Water lock muffler.
- 3 12 volt D.C. electric fuel pump.
- 4 240 volt bulkhead mounting switchboard with ship-shore change over switch, voltmeter, ammeter, frequency meter, two-pole main circuit breaker, five (5) two-pole individual load circuit breakers.



Open Model



Silenced Model



Dimensions - 1-3 phase

Model	Length L (mm)	Width W (mm)	Height H (mm)	Weight Kg (wet)
SW6400 (8 K.V.A.)				
Open Model	955	550	658	237
Silenced Model	1060	600	685	264

Distributed by:

Manufactured by:

Sea Wasp Australia

PO Box 863, Wynnum Qld 4178
 Phone: (07) 3907 0708 Fax: (07) 3907 0709
www.seawasp.com.au