

Native Plants and Birds...

What's the Connection?





Protecting Nature for 125 Years

[JOIN THE CELEBRATION](#) ▶

OUR MISSION

Protecting the nature of Massachusetts for people and for wildlife.

FIND A PLACE TO EXPLORE

Select a Wildlife Sanctuary ▼

OR

Search by Location

[FIND A PLACE](#)





- Founded 1990
- Largest urban wildlife sanctuary in New England
- 435 acres, 5 miles of marked trails
- 3 miles from downtown Worcester

Broad Meadow Brook



BMB Entrance and Education Center



Common buckeye
Verbena moth + 8 more

Why do birds need 'native' plants?

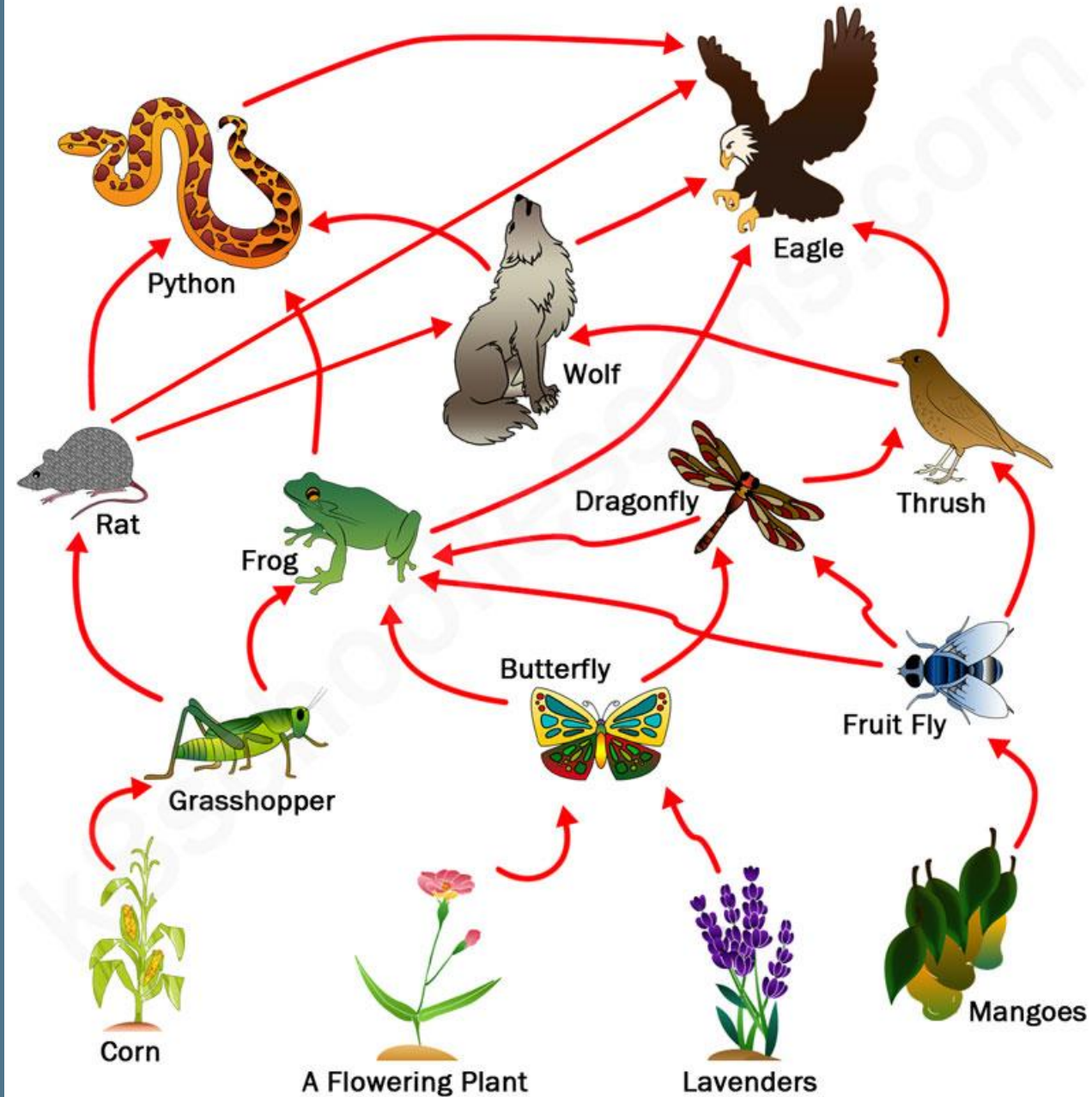
Gardens as ecosystems

Native > exotic >> invasive

Ecological value of natives

Bird-friendly gardening

A Food Web



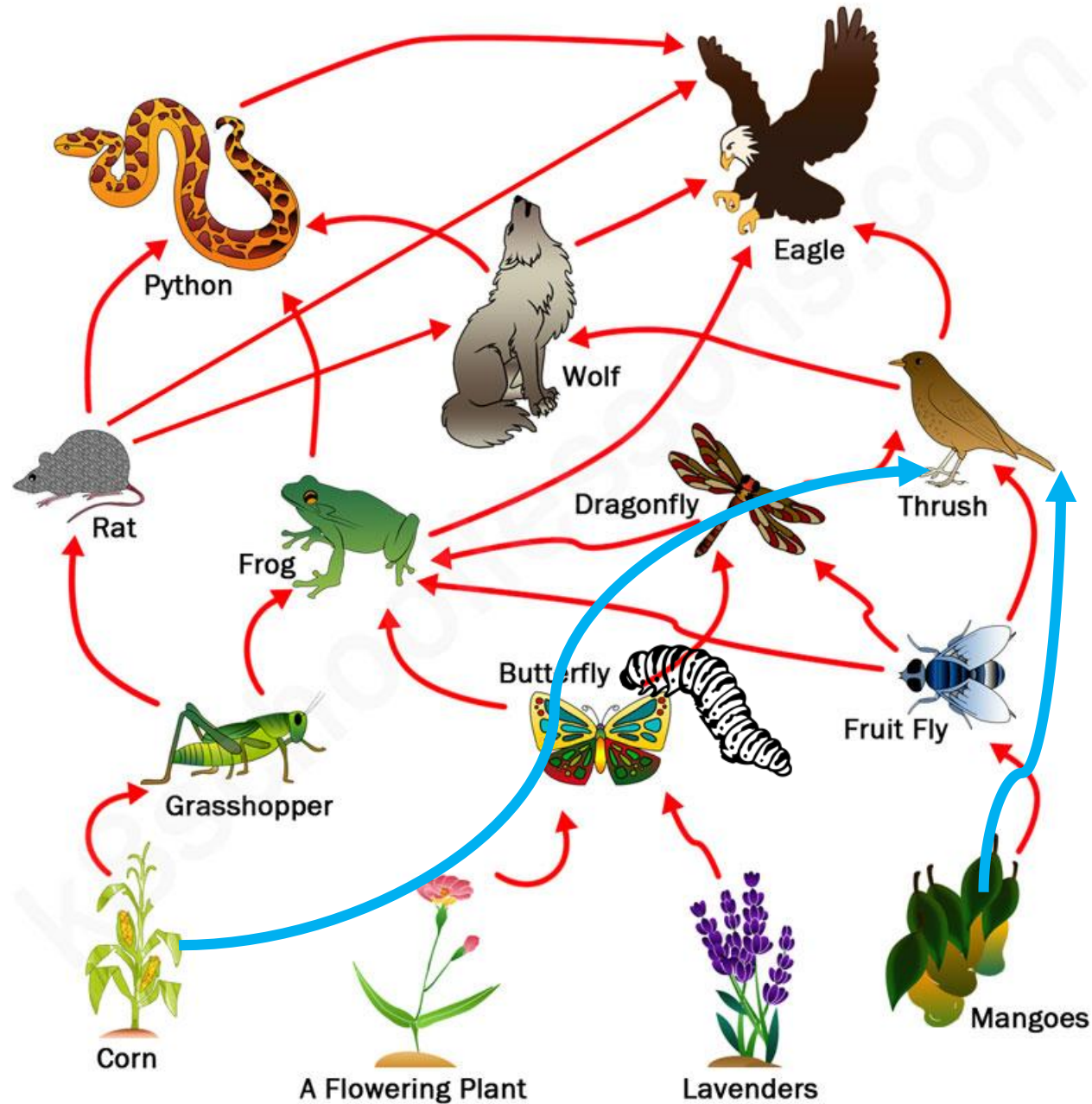
Gardens as Ecosystems

Find the birds...

What are they eating?

(What *aren't* they pictured as eating?)

A Food Web



Gardens as Ecosystems

Find the birds...

What are they eating?

(What *aren't* they pictured as eating?)

Garden as Ecosystem

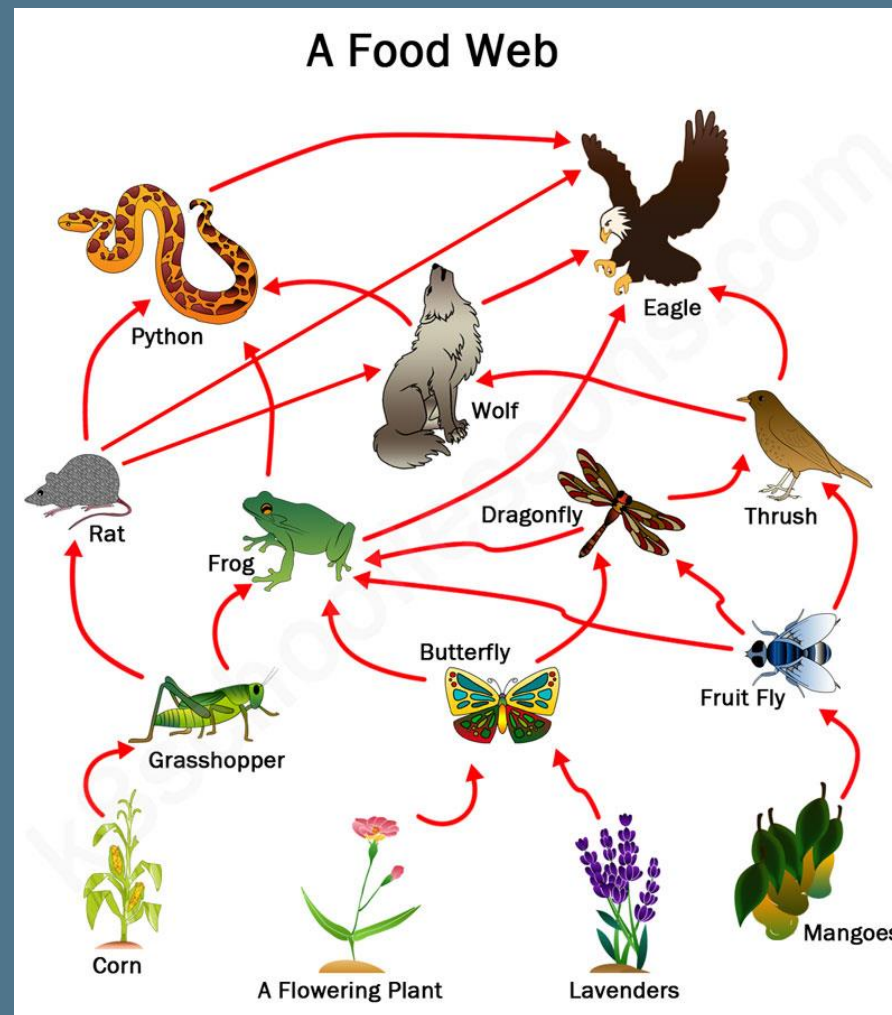
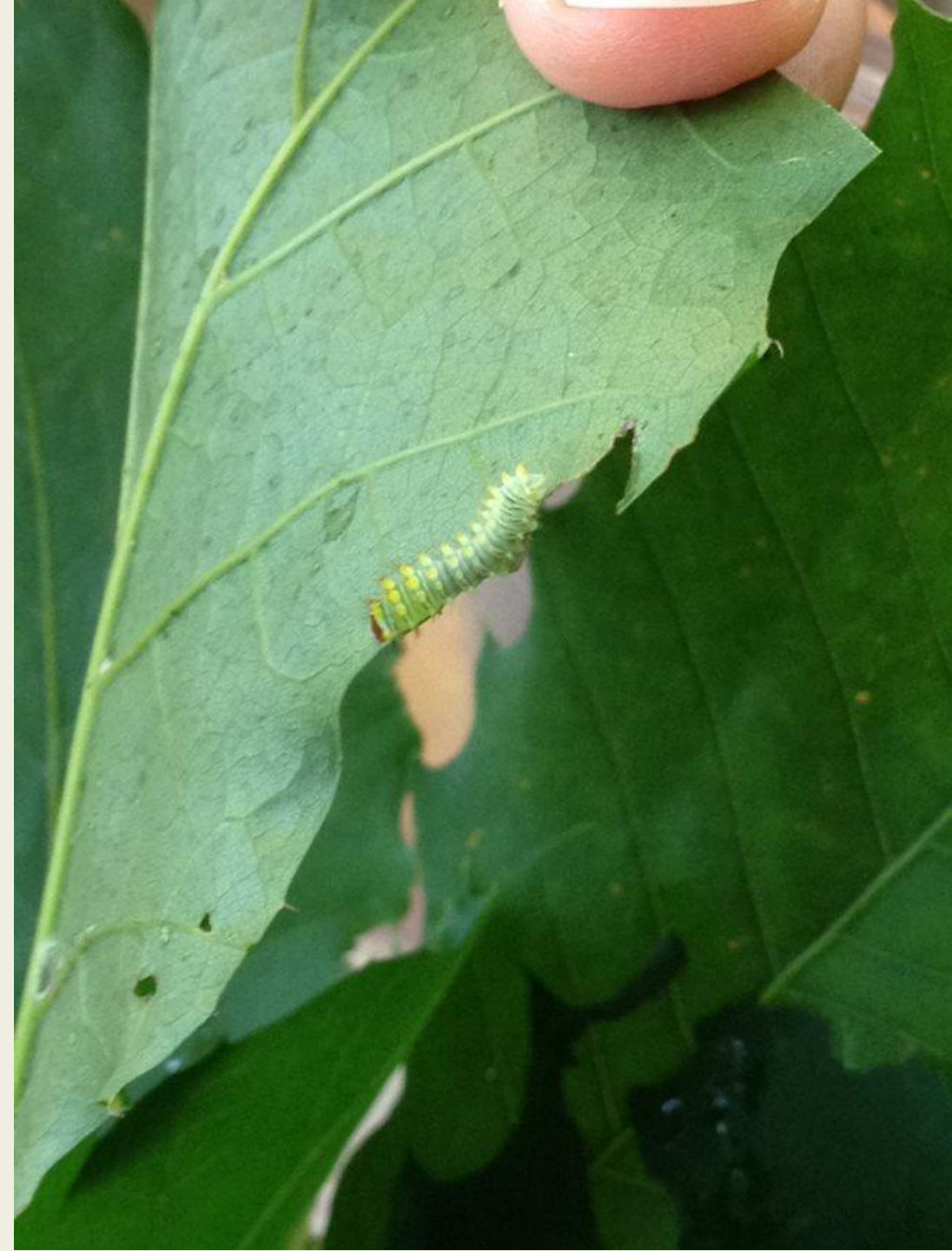


photo by Sarah Jansen



Garden as Ecosystem







What's 'native'?

Plants that...

- grow naturally in your area.
- have evolved in place 10,000's years.
- thrive in local soils, rainfalls, weather, climate.



Some Native Plants

Oenothera biennis (Evening primrose) with
primrose moths (*Schinia florida*)



Virginia creeper

- 28 moths & butterflies
- Virginia creeper clearwing*
- Virginia creeper sphinx



Whitney Cranshaw,,CSU
Bugwood.org



Bugguide.net Ilona L.



White Baneberry

- Aka Doll's eyes
- *Actaea pachypoda*
- Hosts 2 moths, 1 butterfly (summer azure)





Exotic

- From other regions, country, or continent
- Supports only pollinators
- Some well-behaved, some escapes...



Invasive

- Comes from another region, country, or continent
- Lacking predators, invades habitat
- Creates monocultures

Japanese
knotweed



Betty Marose

Asiatic Bittersweet

Invasive

Burning Bush



Invasive



Purple Loosestrife

Invasive



Bradford Pear

UGA2308117



University of Delaware

- 1 chickadee family needs 6000 caterpillars
- Caterpillar load
Oak vs Bradford pear
- Doug Tallamy, “Nature’s Best Hope”

How many caterpillars
for a baby chickadee?

Native Plants

- Provide food for pollinators
- pollen and nectar, seasonal

Spicebush & native bee



Native Plants

- Provide seasonal pollen and nectar

Asclepias tuberosa
(butterfly weed) with
Coral hairstreak b'fly &
native bees

Mid-late summer



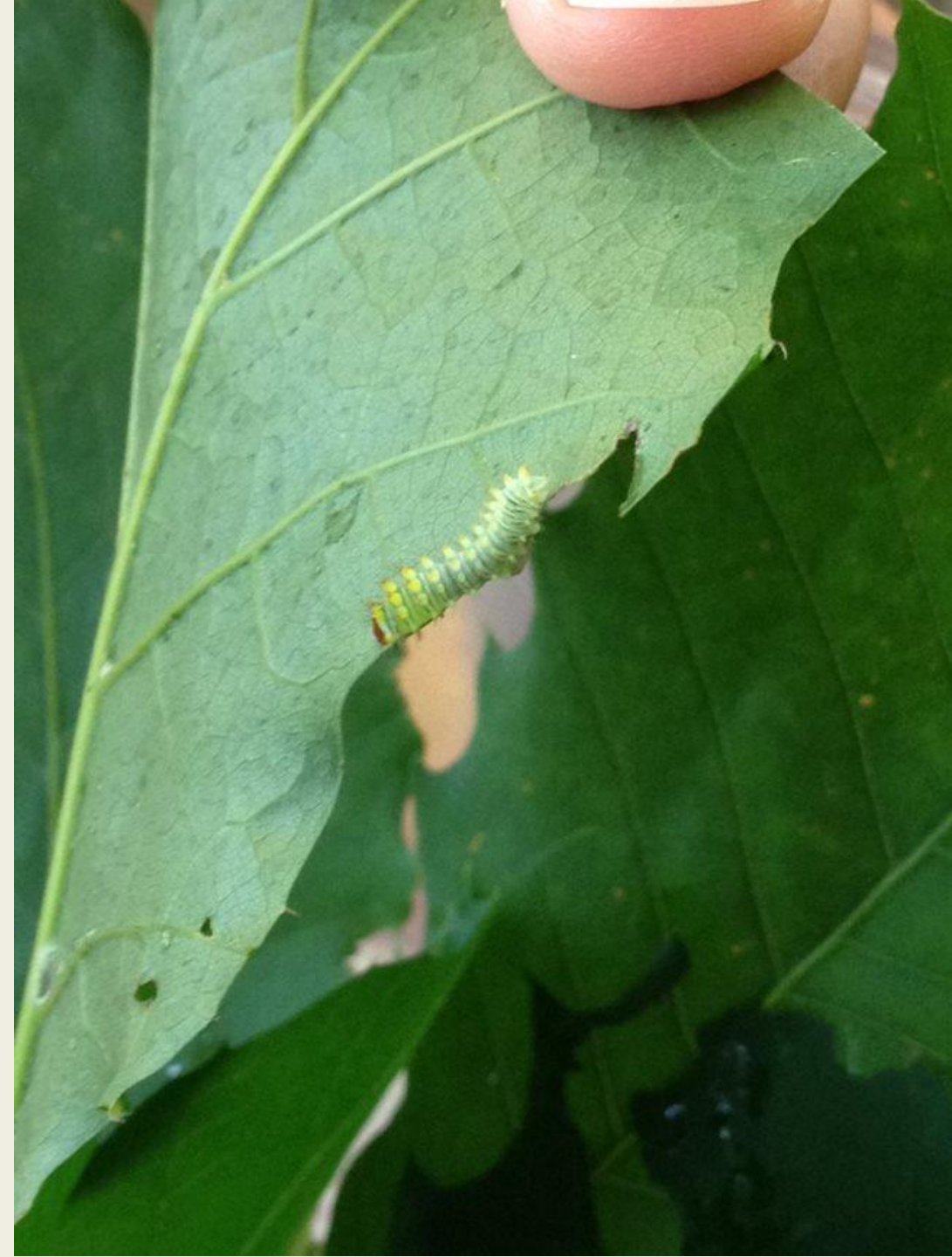
Native Plants

- Provide food for larval insects (bird food)
- *Great Spangled Fritillary* on common milkweed
- *GSF caterpillar* on violets



Native Plants

- Grow bird food
- *Caterpillar on oak*
- Many insects are specialists & need natives.





Native Plants

- grow food for larval insects (bird food)
- *Galls on cherry leaves*



Another kind of food ...

Native Plants provide nest materials



Hummingbird nest lined with cinnamon fern fuzz



Youtube



Nest materials or food?

Chickadee on cattail



Native Plants

- Grow bird food

*American Goldfinch on
Echinacea*

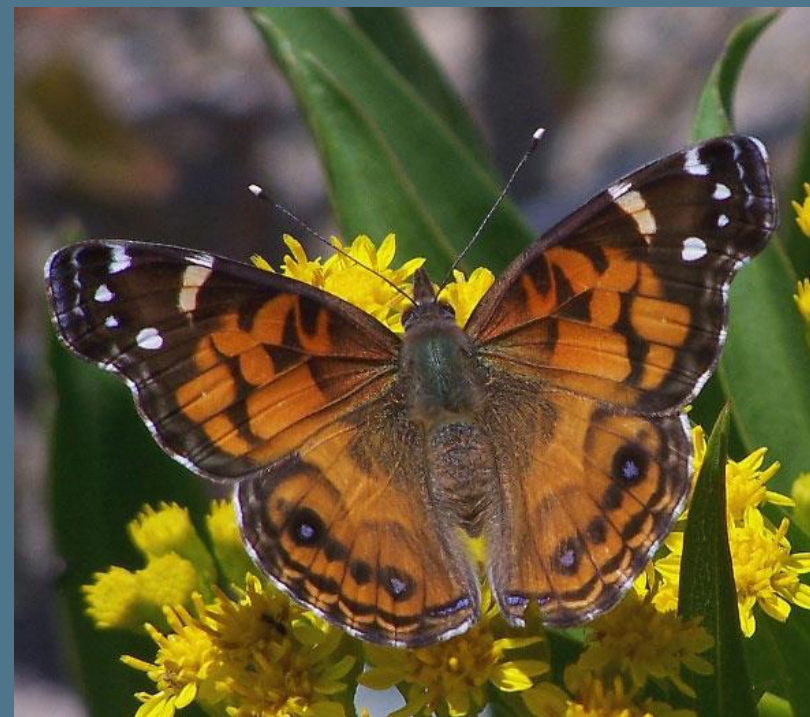


Diversity ... grows bird food in many seasons

- Anaphalis, aka pearly everlasting
- American Lady butterflies + 7
- Fall bloom



Fred Goodwin



Frank Model



Seasonal Food Sources

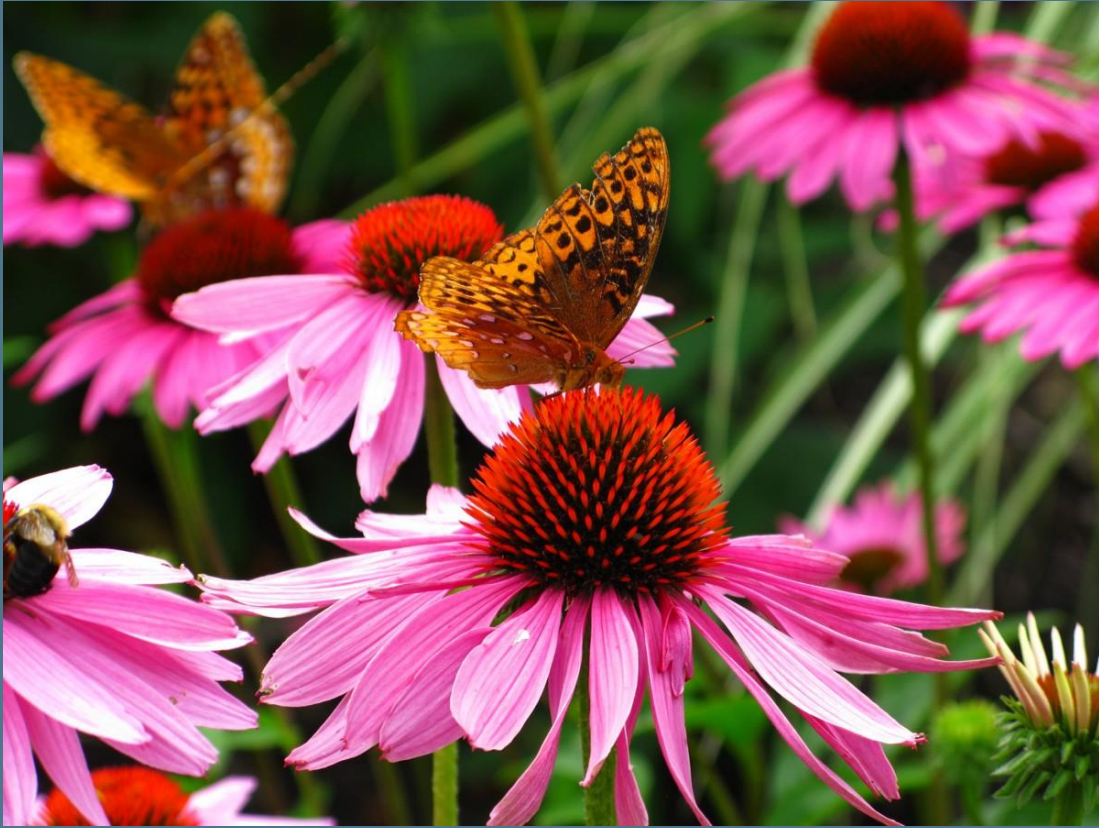
Silky dogwood, *Cornus amomum*



Seasonal Food Sources

Goldfinch on Birch

What about cultivars?



Echinacea purpurea



Double Scoop Cranberry

How can our spaces support birds?



Be a little messy
Plant native

No chemicals
Leave bare spots

Leave Leaves Alone



HMMM...WHAT'S BEING SENT AWAY TODAY?





Leave seeds & stems

70% native plants



Vegetable Gardens

- Black Swallowtail
- dill, parsley, carrot
- Massachusetts State B'fly



Frank Model

A Few Choice Natives

- Blueberry
- Spicebush
- Winterberry
- Cornus (various dogwoods, *not Kousa*)
- Wild Bergamot
- Joe-pye
- Swamp milkweed, butterfly weed
- Asters
- Native grasses and sedges





Welcome • Bienvenido

Broad Meadow Brook

Conservation Center & Wildlife Sanctuary

Open to the Public



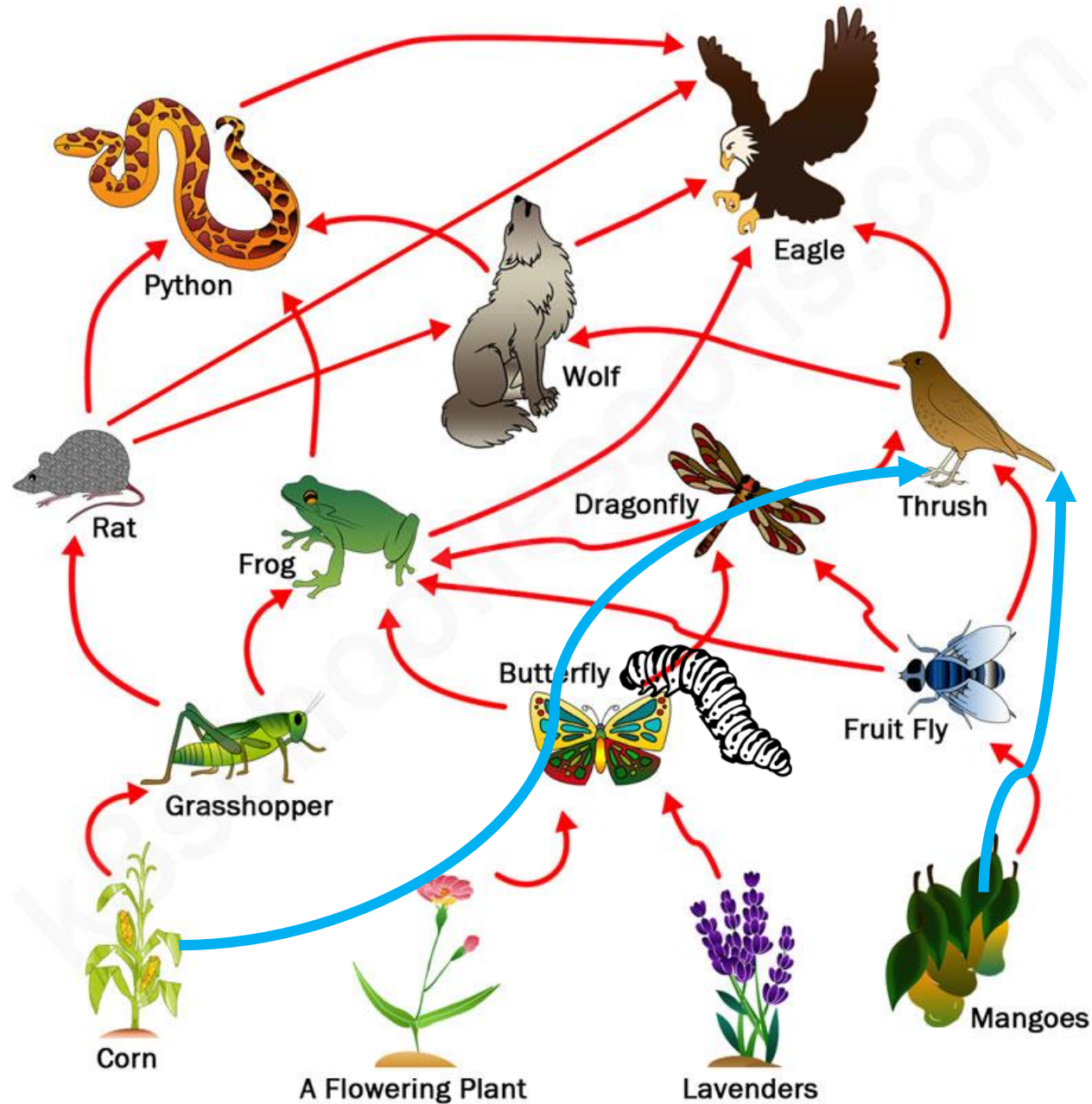


Common buckeye
Verbena moth + 8 more

Why do birds need 'native' plants?

- Gardens as ecosystems
- *Native > exotic >> invasive*
- Ecological value of natives
- Bird-friendly gardening

A Food Web



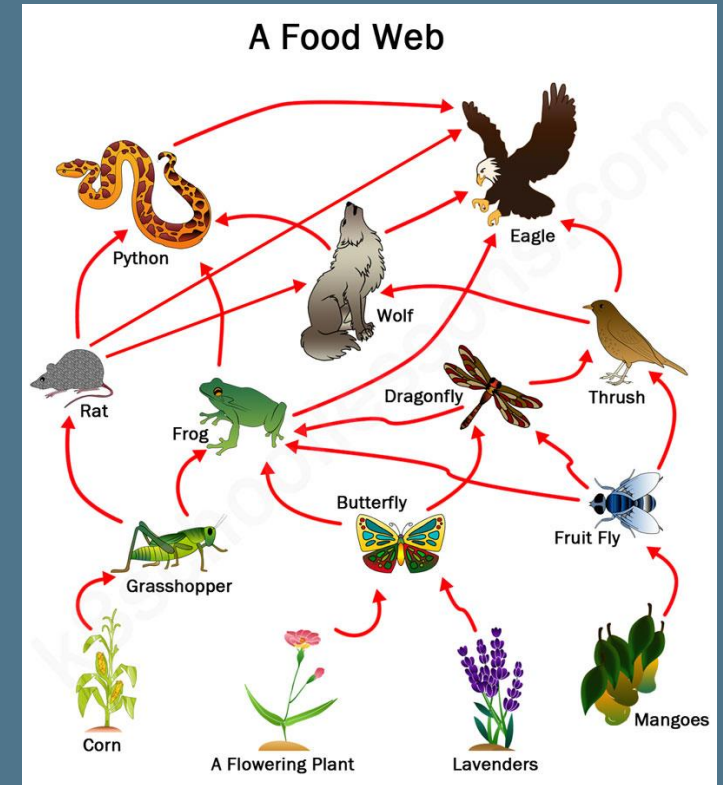
Gardens as Ecosystems

Supporting birds helps all creatures.

Consider all seasons.

Consider all life stages.

Ben Peters



Garden as Ecosystem

Resources

Native Plant Finder

www.nwf.org/NativePlantFinder/Plants

Mass Audubon (pollinators)

www.massaudubon.org/learn/nature-wildlife/help-pollinators-thrive/plant-a-pollinator-garden

Tallamy books:

- Nature's Best Hope
- Bringing Nature Home

The screenshot shows the 'Native Plant Finder [BETA]' website. At the top, there are navigation links for 'REGISTER', 'LOGIN', and a location pin icon with '01604'. A search bar is also present. Below the navigation, there are icons for 'FIND NATIVE PLANTS', 'FIND BUTTERFLIES', and 'MY LIST'. The main heading is 'Native Plants (By Zip Code)', accompanied by a green leaf icon. A sub-heading reads: 'Discover native plants, ranked by the number of butterfly and moth species that use them as host plants for their caterpillars.' Below this, a section titled 'FLOWERS AND GRASSES' features a grid of eight plant cards. Each card includes a 'SAVE' button, a butterfly icon, and a count of host species. The plants listed are: goldenrod (Solidago, Asterales, 125 butterflies), strawberry (Fragaria, Rosales, 81 butterflies), sunflower (Helianthus, Asterales, 58 butterflies), deer vetch, trefoil (Lotus, Fabales, 32 butterflies), joe-pye weed, thoroughwort, do ... (Eupatorium, Asterales, 31 butterflies), violet (Viola, Violales, 30 butterflies), lupine (Lupinus, Fabales, 28 butterflies), and geranium (Geranium, Geraniales, 27 butterflies).

