

# 2022 IMPACT REPORT

Word Made Flesh International



INTERNATIONAL

Photo Credit: WMF Rwanda

# TABLE OF CONTENTS

Letter From the Caretakers	<b>3</b>
Community Updates	<b>5</b>
Reports of the Word Made Flesh Communities	
<i>Africa</i>	<b>6</b>
<i>Eastern Europe</i>	<b>10</b>
<i>Latin America</i>	<b>13</b>
<i>Asia and Oceania</i>	<b>16</b>
<i>North America</i>	<b>19</b>
Involvement Opportunities	<b>22</b>
Financial Report	<b>23</b>
Letter From the Board Of Directors	<b>24</b>
Global Review	<b>26</b>
Plans for 2023	<b>31</b>
Prayer Requests	<b>32</b>
Thank you	<b>33</b>



# A LETTER FROM THE CARETAKERS

Cami Goble  
Ken Dean  
Kristen Stiefel  
David Chronic

## **Dear Friends, Partners, and Advocates,**

Greetings in the name of our Lord Jesus Christ from the Caretakers of Word Made Flesh! It is with great joy and gratitude that we present to you the 2022 Impact Report of Word Made Flesh. Within this report, you will discover heartwarming stories of transformation, financial statements, and a comprehensive overview of our programming.

In 2022, we underwent a transformation by reorganizing our leadership structure into a cohesive team known as the Caretakers. This team consists of individuals who oversee various aspects of our organization, including staff care, ministry programs, operations, and finances. This restructuring has allowed us to cultivate a remarkable synergy in our collaborative efforts, aligning with the community ethos of Word Made Flesh.

Following the formation of the Caretakers, we organized a Staff Gathering, a remarkable event where the majority of our staff from across North America gathered at the International Office in Kentucky for a week of fostering community and growth. The gathering centered around the theme "The Five Marks of the New Friars," embodying the distinctive qualities of missional communities associated with Word Made Flesh. These marks include devotional, emphasizing prayer and worship; communal, committed to serving in community; missional, bearing witness to God's purposes through our activities; incarnational, intentionally being present and close to those we serve; and marginal, prioritizing relationships and activities among the most vulnerable.

The Staff Gathering proved to be a profoundly enriching experience, reigniting our passion and dedication to the vision of **servicing Jesus among the most vulnerable**. As you read the 2022 Impact Report, we hope that you will sense our desire to pursue this vision as well as detect expressions of these five marks of our missional community.

Over the past year, our staff have continued to faithfully serve some of the most vulnerable communities, embodying the love and compassion of Christ. Through our programs and initiatives, we prioritize relationships, endeavoring to address the root causes of poverty and focusing on the holistic well-being of individuals and communities. Our collective action has made a significant impact, bringing about positive change in the lives of those who are often forgotten or marginalized.

None of this would have been possible without the dedicated support of our committed staff, volunteers, donors, and partners. We thank God, and we express appreciation to each and every individual and organization that has contributed their time, resources, and prayers to further our mission. Your unwavering support has been instrumental in our success, and we are deeply grateful for your partnership.

As we look ahead, we are filled with hope and anticipation for what the future holds. While the challenges of poverty persist, our faith in God's provision and guidance remains steadfast. We are committed to continuing our mission of serving Jesus among those who experience poverty and oppression, testifying to hope in the face of doubt and despair, and proclaiming the love of Christ to the margins of the earth.

Thank you once again for your invaluable support. We humbly ask for your continued prayers and partnership as we press onward in our shared mission. Together, we can be a tangible expression of God's love for a hurting world.

**Yours in Christ,  
The Caretaker Team**

Cami Goble, Ken Dean, Kristen Stiefel, and David Chronic

# COMMUNITY *Updates*



Hear about the vision and the ways the Lord is working in each of the Word Made Flesh communities around the world.





Photo Credit: WMF Sierra Leone

# AFRICA



# WMF Sierra Leone

**The Mission of Word Made Flesh Sierra Leone:** WMF Sierra Leone seeks to love, serve, and accompany vulnerable children and youth, destitute families and women who are sexually exploited in Kroo Bay. Through offering the poor in Kroo Bay relationships built on mutual vulnerability and trust, along with leadership training, and skills and traditional education, we endeavour to spread God’s light, hope, wisdom, and peace.

## WMF SIERRA LEONE AT A GLANCE



**8 Women** graduated in July 2022 from the women’s ministry program



**3 Youth** graduated in October 2022 from the Lighthouse Youth Program



**550 Children and 45 Youth** attended Christmas parties that were put on at the Alé Alé house.



# WMF Rwanda

**The Mission of Word Made Flesh Rwanda:** Enabling women in the Binunga neighborhood to experience holistic transformation through savings associations, Bible study, and entrepreneurship opportunities.

## WMF RWANDA AT A GLANCE



**42 Hours** of Bible Study with savings groups were conducted.



**60 Home Visits** were conducted throughout the neighborhood.



**2400 Cups** of Porridge were shared.







**The Mission of Word Made Flesh Burundi:** Promote holistic healing and offer capacity building to the community. Contribute to the empowerment of the community on reconciliation processes and conflict transformation through sensitization and training.

## WMF BURUNDI AT A GLANCE



**14 Local Administrators** were trained on mental health themes, trauma and the role of memories in the construction of social fabrics.



**50 Stories of Change** on healing memories.



**4,974 People** were sensitized by psychologists on the variety of themes: peace, social cohesion, reconciliation, trauma, mental health, and gender-based violence.





Photo Credit: WMF Romania

# EASTERN EUROPE



# WMF Romania

**The Mission of Word Made Flesh Romania:** a better future for vulnerable children through personal development by partnering friends.

## WMF ROMANIA AT A GLANCE



**38 Families** were supported by the Community Center.



**8,155 Meals** were served by the staff at the community Center.



**86 Group Counseling Sessions** along with **328 Individual sessions** were provided by the Community Center.





**The Mission of Word Made Flesh Moldova:** WMF Moldova builds community among the vulnerable and the marginalized children and their families. We create a space of respect and hope offering equal chances of holistic healing through practical activities that contribute to their rehabilitation and integration into society.

## WMF MOLDOVA AT A GLANCE



**1228 Volunteer Hours** from people from Moldova, USA, England, Uzbekistan, Tajikistan and Ukraine offer their time.



**2 Local Churches** developed a relationship with WMF Moldova.



**1 Staff Member** was welcomed from the U.S. to serve full-time for the next 3 years.



**11 Families** were helped to apply for state subsidies.

**26 Families** received packages of staple foods.



Photo Credit: WMF Bolivia

# LATIN AMERICA



# WMF Bolivia

**The Mission of Word Made Flesh Bolivia:** WMF Bolivia seeks to awaken hope and offer opportunities for holistic transformation.

## WMF BOLIVIA AT A GLANCE



**7 Women** were fully freed from sexual exploitation.



**41 Women** have been better equipped to recognize and overcome trauma through individual and group therapy.



**24 Women** gained skills in budgeting, savings and small business management, and **19 women** accessed micro-loans to start their small business



**5 Survivors** stepped into leadership roles to empower and encourage each other.



**The Mission of Word Made Flesh Brazil:** We are called by God to offer a prophetic witness to the city of Rio de Janeiro, especially to those who struggle with and suffer from drugs, poverty, broken families and violence.

## WMF BRAZIL AT A GLANCE



**2 Women** left prison and made changes in their mindset and behavior, receiving support to never go back.



**5 Women** newly welcomed to participate at the Center, with others enrolled on the waiting list.



Photo Credit: WMF Papua New Guinea

# ASIA AND OCEANIA





**The Mission of Word Made Flesh India:** to seek out those for which there is least concern and assistance: to love the unloved, and touch the untouchable. We believe in the reality that the poor are rich in Christ and the rich are utterly poor apart from Him. We exist to bring the Kingdom of God among the battered, beaten and broken lives of children, teens, youth and women of Southern India.

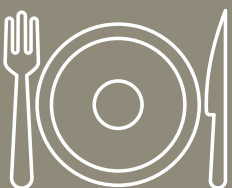
## WMF INDIA AT A GLANCE



**6 Children** testified their commitment to the Lord through water baptism.



**5 Teens** are receiving voice training and are involved in choir practice with a gospel band.



**80 meals** provided to those living on the streets.



# WMF Papua New Guinea

**The Mission of Word Made Flesh Papua New Guinea:** Serving rural communities in Papua New Guinea through evangelism, discipleship, and sustainable development.

## WMF PAPUA NEW GUNIEA AT A GLANCE



Hosted **1 training** on first aid and medical outreach to several groups in the Sepik Region.



Began **1 developmental project**, open market structure, with neighboring village Kumbawe.



**19 Participants** in a teacher's workshop to help local primary teachers improve their English literacy grades.





Photo Credit: Navajolands

# NORTH AMERICA



**The Mission of Word Made Flesh Navajolands:** Witness to the Good News of Jesus Christ by engaging in works of mercy and justice alongside people experiencing poverty and marginalization.

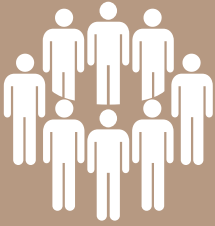
**WMF NAVAJOLANDS**  
**AT A GLANCE**



**13 Students** attended the inaugural Asbury University Cross Cultural Experience on the Navajo Nation.



Continued partnership with Collective Medicine – delivering **water and firewood** to the most vulnerable on the Reservation.



**3 trips** focusing on relationship building in the church and community.



# WMF International Office

**The Mission of the Word Made Flesh International Office:** Joining the global church in sustainable development for flourishing futures of women and children by supporting our global staff.

## WMF INTERNATIONAL OFFICE AT A GLANCE



Recruited at **5 Universities.**



**3 caregivers** were recruited, (1 Spiritual director, 2 mental health coaches) all joined our External Care Network.



**7 interns** were sent to WMF Moldova, Romania, Sierra Leone, and Bolivia.



**720 Hours** of Service from Volunteers for the International Office.



# Involvement Opportunities

## BOLIVIA INTERNSHIP

Join Word Made Flesh Bolivia as an intern to empower and support women who have been sexually exploited. In this internship, you will work with Project Suma staff, assist women seeking a way out, and engage with children at the center. This is a unique opportunity to immerse in Bolivian culture, learn Spanish, and make a positive impact in a cross-cultural setting.

## SIERRA LEONE INTERNSHIP

Make a difference in the lives of vulnerable children in Kroo Bay, Sierra Leone by joining the House of Hope team, engage in activities, learn the local culture, and participate in the Lighthouse ministry. In this internship, you will build relationships, learn from resilient communities, and contribute to youth empowerment.

## MOLDOVA INTERNSHIP

Join the Word Made Flesh Romania team to make a positive impact on vulnerable children in Moldova. Interns will support and mentor children in the extracurricular program, learn about the local culture, and serve in neighboring communities. This is your opportunity to contribute to community development, learn from resilient individuals, and experience personal growth through service.

## RWANDA INTERNSHIP

Join Word Made Flesh Rwanda for a new kind of internship experience! Be transformed as you dive deep into a study of poverty and community development and engage daily in missional community among the most vulnerable. Engage Rwandan culture through hands-on study, and daily life with a local host family. Transform your worldview as you build new friendships, invest in the lives of the vulnerable, and seek God in the context of poverty.

## NAVAJO NATION DISCOVERY TRIP

Embark on a one week journey to experience the rich culture of the Navajo Nation. As an intern, you will engage with Bodaway Ministries, build meaningful relationships, and learn about Word Made Flesh's involvement. You will broaden your perspective, deepen understanding of indigenous cultures, and foster personal growth through service and relationship-building.

## ROMANIA INTERNSHIP

This is your opportunity to serve under-resourced communities in Romania. Interns will work with children, live with a host family, and engage in language lessons. This experience will allow you to develop skills in working with vulnerable populations, deepen understanding of Romanian culture, and contribute to sustainable community development.

You also have the opportunity to use your equine studies and experience to make a real world impact, serving vulnerable children in Romania. You will do this by learning and being mentored in equine therapy by local partners of Word Made Flesh.

## PAPUA NEW GUINEA INTERNSHIP

Join life and work in a remote village in Papua New Guinea. You can learn about Bible Translation and making God's word accessible to a rural community (assisting with biblical text entry, type setting, and literacy materials development) and help facilitate an adult education program and skills training opportunities at our community center.

Scan this QR code to view the application!



# FINANCIAL *Report* — 2022 —



# FROM THE BOARD OF DIRECTORS

**Dear Friends and Supporters,**

We are thrilled to share with you the data and insights from our most recent impact report—**a comprehensive reflection of the collective work we have achieved together in the past year.** Every page is a testament to the lasting impact we have made in the lives of vulnerable and marginalized populations around the world. None of this would be possible without the unwavering support, dedication, and advocacy of friends like you. We extend our deepest gratitude to everyone in our Word Made Flesh community who has played a part in this meaningful change.

The Word Made Flesh (WMF) communities pursue a shared passion: to bring hope, healing, and holistic transformation to the most vulnerable and marginalized populations worldwide. With deep compassion and unwavering commitment, we strive to create a world where no one is left behind, where dignity and justice are afforded to all.

Through our comprehensive programs and initiatives, we have witnessed lives being restored, dreams being reignited, and communities being revitalized. From providing access to quality education, healthcare, and livelihood opportunities to combating human trafficking, gender-based violence, and systemic poverty, our collective efforts are making a profound difference in the lives of those we serve.

As you have seen in the pages of this report, the WMF communities testify to stories of resilience, hope, and the power of compassionate action. You have a sense of the individual vision for each of the communities around the world as well as the efforts that are already taken effect.

We are proud to share with you the results of our collective efforts. As you become aware of the results of our collective efforts, we hope you will feel a deep sense of joy and fulfillment, knowing that your partnership has made a tangible difference in the lives of those we serve.

Thank you for being part of our journey.

With peace and love,

**Steve Behnke**  
**Chair of the Board of Directors**  
**Word Made Flesh International**





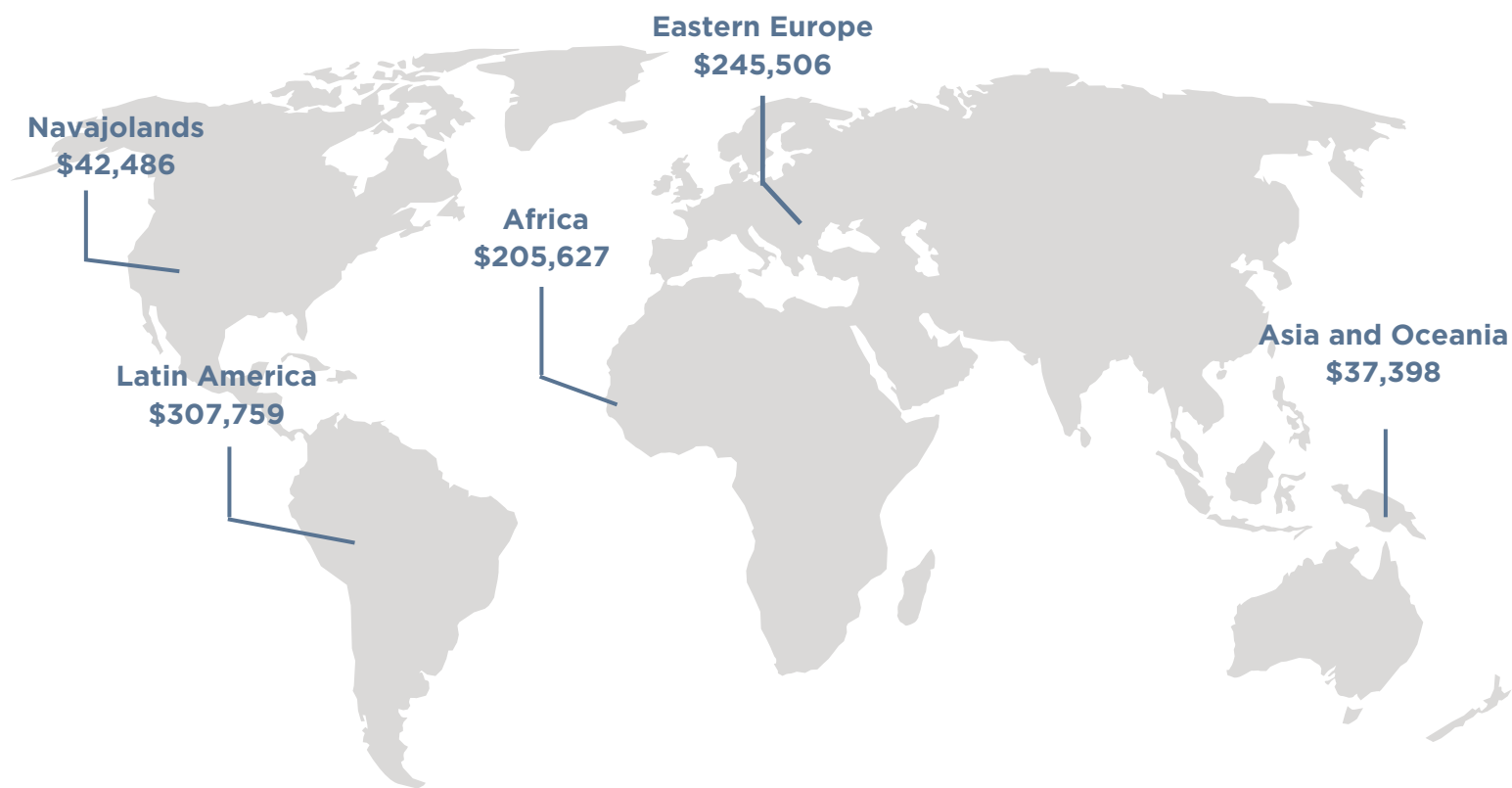


# \$838,775

Total Global Impact



Photo Credit: WMF Romania



# A Global Review

## Asia and Oceania

India  
Papua New Guinea

## Eastern Europe

Romania  
Moldova

## Latin America

Bolivia  
Brazil

## Africa

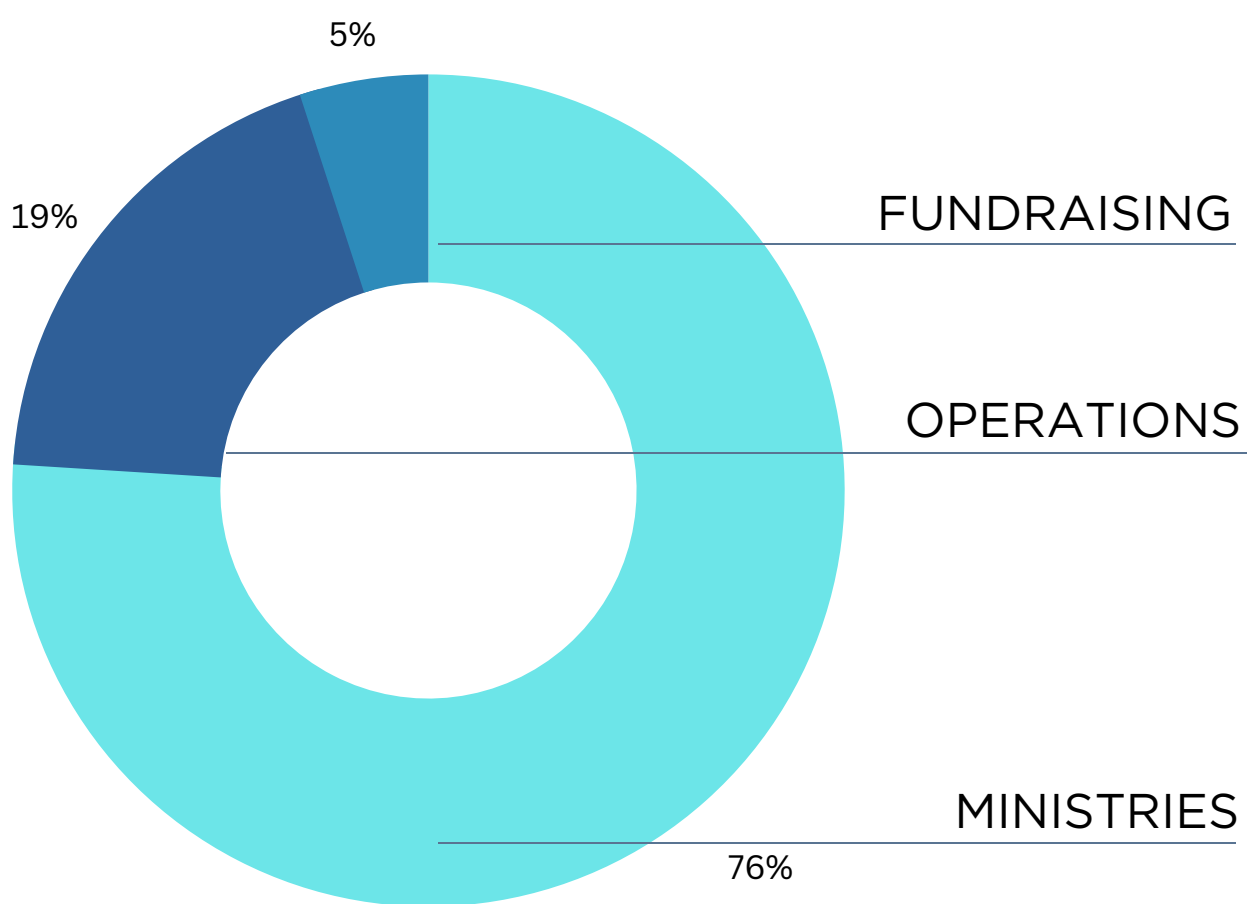
Burundi  
Rwanda  
Sierra Leone

## North America

Navajolands



# FINANCIALS AT A GLANCE



# INTERNATIONAL MINISTRIES

## Financial Report

**\$378,123** BEGINNING BALANCE

---

**\$760,956** INCOME

---

**\$838,775** EXPENSES

---

**\$300,304** ENDING BALANCE





# USA OPERATIONS & MINISTRIES

## Financial Report

**\$204,203** BEGINNING BALANCE

---

**\$251,553** INCOME

---

**\$361,598** EXPENSES

---

**\$94,157** ENDING BALANCE

# TOTALS FOR INTERNATIONAL & USA OPERATIONS AND MINISTRIES



Total Impact

\$582,326

BEGINNING BALANCE

\$1,012,509

INCOME

\$1,200,373

EXPENSES

\$394,462

ENDING BALANCE

\*WORD MADE FLESH INTERNATIONAL  
CARRIES NO DEBT

# PLANS FOR 2023



Send a team of 17 (15 students) on a spring break Discovery Trip from Asbury University to the Navajolands.

Send 5 interns to Romania in May (2 for 2 weeks, 2 for 6 weeks, and 1 for 9 weeks), 1 to Bolivia, and 1 to Sierra Leone.



Participate in World Evangelical Alliance conference in Thailand and the Christian Community Development Association conference.

Psychologists from WMF Burundi will conduct a "Healing of Memories" workshop that the WMF Sierra Leone staff will participate in.



Make visits from the International Office to the WMF communities in India, Brazil, Bolivia, Romania, Moldova, Sierra Leone, Rwanda, and Burundi.

Revamp and relaunch the Word Made Flesh Website.



# Join us in Prayer

Please pray for our staff, mission partners, and volunteers as they continue to serve in some of the most marginalized and vulnerable communities around the world. Pray for their safety, health, and resilience as they seek to embody God's love and compassion. Pray that they may experience renewal, strength, and perseverance as they serve sacrificially and advocate for justice on behalf of those AMONG whom we serve.

We ask for prayers for the vulnerable children, women, and families we serve, that they may experience healing, hope, and restoration. Pray for the transformation of ALL our lives as we encounter the love and grace of Jesus.

As we navigate the complexities and challenges of addressing systemic issues and engaging in long-term transformation, pray that our organization's leadership, staff, and volunteers may be filled with wisdom and discernment. Pray for God's guidance in making strategic decisions and implementing effective programs.

Pray for the sustainability and growth of our missional organization. Ask God to provide the necessary resources, both financial and human, to support and expand our missional work. Pray that God would open doors for new partnerships, donors, supporters, AND STAFF who share our passion for serving the most marginalized and overlooked populations.

Please pray for the local churches and communities where we work, that they may be empowered and equipped to carry out their own missions of compassion and justice. Pray for unity and collaboration among various organizations and churches, as we work together to bring about holistic transformation.

Finally, we humbly ask for prayers of gratitude for all that God has done through Word Made Flesh. Thank God for the lives that have been touched, the stories of redemption and restoration, and the ways in which God's kingdom is being experienced through our ministry. Pray that we may continue to be faithful stewards of the mission entrusted to us.



# Thank You

Thank you for your support! Because of your involvement, we can continue to participate in what God is doing, joining the global church in service among the most vulnerable.

**Please click the link below to give!**

**Give now!**





Follow **Word Made Flesh International**  
[www.wordmadeflesh.org](http://www.wordmadeflesh.org)

