

SRNT | 25

25th Anniversary

San Francisco, CA

February 20-23, 2019

PROGRAM



TABLE OF CONTENTS

Abstract Reviewers..... 11

Badges 21

Board of Directors & Leadership 22

Exhibitors..... 27

Future Meetings..... 22

Hotel Floor Plans 28

Index–Author 85

Lunches 19

Message from the Program Chair 4

Members Meetings 22

Network Advisory Committees..... 10

Past Presidents and Program Chairs 16

Poster Session Setup Schedule 20

Program Committee 8

Registration 18

Remembrances of Pioneers for Whom SRNT’s 2019 Awards Are Named 23

Session Summary: 33

 Wednesday, February 20, 2019..... 33

 Thursday, February 21, 2019 41

 Friday, February 22, 2019 56

 Saturday, February 23, 2019 70

Speaker Ready Room 21

SRNT Supporters 27



MESSAGE FROM THE PROGRAM CHAIR

Dear Colleagues,

On behalf of the SRNT Program Committee, we welcome you to the 25th Annual Meeting of the Society for Research on Nicotine and Tobacco (SRNT) in San Francisco!

This year, the overarching program theme focuses on tobacco-related health disparities and underserved populations. While the overall prevalence of smoking is decreasing in many countries, these gains have been smaller among persons who: 1) live in low- and middle-income countries; 2) report other substance or mental health concerns; 3) are low-income; and/or 4) identify as members of certain ethnic, racial, and/or other groups. In addition, the changing landscape of nicotine and tobacco products poses new potential challenges and opportunities. This theme has guided our selection of plenary sessions, and we have aimed to include content in the program from basic science, epidemiological surveys, clinical studies, and policy to better understand and treat tobacco use among populations experiencing disproportionately high burden and health consequences from tobacco use. As always, the annual meeting offers you cutting-edge scientific presentations across the full spectrum of basic and applied research on nicotine and tobacco. There will be presentations on pivotal clinical trials, new electronic nicotine delivery systems, effective mobile strategies for treatment and engagement, insights from basic science on the effects of nicotine, plus hot topics in the areas of nicotine reduction, tobacco use epidemiology, genomics, biomarkers, non-cigarette tobacco products, tobacco product regulation, cessation, and tobacco control policy.

Several key highlights for the meeting are:

Wednesday, February 20, 2019

5:30 p.m.-6:45 p.m.

Presidential Symposium

Tobacco Control for All: Addressing Smoking Disparities for Priority Populations

Chair: *Marina Picciotto, PhD, Charles B. G. Murphy Professor of Psychiatry and Professor in the Child Study Center, of Neuroscience and of Pharmacology; Deputy Chair for Basic Science Research; Deputy Director, Kavli Institute for Neuroscience, Yale University School of Medicine, New Haven, CT, USA*

Speakers: *Geoffrey Fong, PhD, Professor of Psychology and Public Health and Health Systems, University of Waterloo, Waterloo, Ontario, Canada; Senior Investigator, Ontario Institute for Cancer Research, Toronto, Ontario, Canada; Pebbles Fagan, PhD, MPH, Professor of Health Behavior and Health Education, and Director, Center for the Study of Tobacco, University of Arkansas for Medical Sciences, Little Rock, AK, USA; Monica Webb Hooper, PhD, Professor of Oncology, Psychological Sciences, Family Medicine and Community Health, Case Western Reserve University; Associate Director for Cancer Disparities Research; Director, Office of Cancer Disparities Research, Case Comprehensive Cancer Center, Cleveland, OH, USA; Andrew Waa, MPH, Ngāti Hine/Ngāpuh, Senior Research Fellow in Public Health, Eru Pomare Māori Health Research Centre, University of Otago, Dunedin, New Zealand; Linda Alexander, PhD, Senior Associate Dean for Academic, Student and Faculty Affairs; Professor, Social and Behavioral Sciences, West Virginia University, Morgantown, WV, USA*



Thursday, February 21, 2019

8:30 a.m.-9:30 a.m.

Basic Science Keynote Plenary

Nicotine During Adolescence: Mechanisms Leading to Long-Term Changes in Cognition

Huib Mansvelder, PhD

Professor of Neurophysiology

Head of Department, Integrative Neurophysiology

Vrije Universiteit

Amsterdam, The Netherlands

Thursday, February 21, 2019

1:30 p.m.-2:30 p.m.

Policy Keynote Plenary and Recipient of the 2019 Jarvik Russell Award

The Intersections Between Social Determinants of Health, Tobacco Marketing, Tobacco Control, and Tobacco Use

Kelvin Choi, PhD, MPH

National Institute on Minority Health and Health Disparities, Division of Intramural Research, National Institutes of Health

Bethesda, Maryland, USA

Thursday, February 21, 2019

1:30 p.m.-2:30 p.m.

Public Health Keynote Plenary

Tobacco Use and the Science of Minority Health and Health Disparities

Eliseo J. Pérez-Stable, MD

Director, National Institute on Minority Health and Health Disparities, National Institutes of Health

Bethesda, Maryland, USA

Friday, February 22, 2019

1:30 p.m.-2:30 p.m.

Clinical Keynote Plenary and Recipient of the 2019 Ove Fernö Award

Precision Therapy for Nicotine Dependence

Caryn Lerman, PhD

Vice Dean for Strategic Initiatives, Perelman School of Medicine

John H. Glick, MD Professor in Cancer Research

Department of Psychiatry, University of Pennsylvania

Philadelphia, Pennsylvania, USA

Also, not to be missed:

- The Opening Reception on Wednesday, February 20, from 6:45 p.m.-8:00 p.m., which will include champagne, cake, and cash bar reception in celebration of the SRNT's 25th Anniversary. All attendees are welcome!
- The Awards Ceremony on Friday, February 22, 1:00 p.m.-1:30 p.m., with special recognition of Ove Fernö Award Winner, Dr. Caryn Lerman; John Slade Award Winner, Dr. Geoffrey Fong; and Jarvik Russell Award Winner, Dr. Kelvin Choi.



SRNT

SRNT 2019 • SAN FRANCISCO, CALIFORNIA

- The SRNT Members Meeting on Friday, February 22, 7:30 a.m.-8:15 a.m.

For meeting attendees arriving early, there are eight pre-conference workshops that will be held on Wednesday, February 20 (available at an additional fee). These include:

- Pre-Conference Workshop 1: Practical Considerations in Designing and Implementing Web Surveys for Rapid-Response Surveillance
- Pre-Conference Workshop 2: An Insider's Guide to Conducting Tobacco Control Research and Interventions Among Sexual and Gender Minority Populations: Challenges Met and Unmet
- Pre-Conference Workshop 3: Countering the JUUL Epidemic Among Youth: Regulatory and Educational Strategies
- Pre-Conference Workshop 4: Understanding Tobacco Use Trends: Leveraging Harmonized Data from the US Tobacco Use Supplement – Current Population Survey, 1992-2015
- Pre-Conference Workshop 5: Authorship and Grantsmanship for Early Career Investigators in Tobacco and Nicotine Research
- Pre-Conference Workshop 6: Recruiting and Retaining Adolescents in Tobacco Control Research: Challenges and Opportunities
- Pre-Conference Workshop 7: An Update to the Basics: Current Approaches for Measuring and Understanding Key Individual Differences and Cessation Outcomes
- Pre-Conference Workshop 8: Implementing Precision Medicine in Smoking Cessation: Patients, Providers, Policy, and More

To follow, and as part of the general registration, please join us prior to the opening plenary session for a special session on Wednesday afternoon from 3:00 p.m.-5:15 p.m.:

- US FDA Center for Tobacco Products: An Update on FDA's Comprehensive Plan for Tobacco and Nicotine Regulation

Session Chair: *Mitch Zeller, JD, Director, FDA Center for Tobacco Products*

Presenters: *Mitch Zeller, JD, Director, FDA Center for Tobacco Products; Deirdre Lawrence Kittner, PhD, MPH, Deputy Director, Office of Science; Gem Benozza, Supervisory Health Communications Officer, Office of Health Communications and Education, FDA Center for Tobacco*



SRNT 2019 • SAN FRANCISCO, CALIFORNIA

SRNT

SRNT received **more than 1,000** abstract submissions for three years in a row . Over the past six months, we have worked thoughtfully to create a timely and high-quality scientific program spanning the full breadth of the nicotine and tobacco research field. We are offering seven concurrent podium presentations, so we hope there is something for everyone!

We encourage you to attend sessions that offer insights beyond your expertise, to engage with your colleagues and seek out new connections, and importantly, we hope that you enjoy the meeting and the vibrant city of San Francisco!

Kind Regards,
Lisa Fucito, PhD
Program Chair

Gideon St.Helen, PhD
and
Andrea Villanti, PhD, MPH
Program Co-Chairs



PROGRAM COMMITTEE

Lisa Fucito, PhD
Yale University School of Medicine, New Haven,
CT, USA

Program Chair

Gideon St.Helen, PhD
University of California, San Francisco, USA

Program Co-Chair

Andrea Villanti, PhD, MPH
CHES, University of Vermont, Vermont, USA

Program Co-Chair

Alicia Allen, PhD
University of Arizona, USA

Rebecca Ashare, PhD
University of Pennsylvania, USA

Carla Berg, PhD
Emory University, USA

Rick Bevins, PhD
University of Nebraska-Lincoln

Billie Bonevski, PhD
University of Newcastle, Australia

Leonie Brose, MSc, Dipl-Psych, PhD
King's College London

Jennifer Cantrell, DrPH, MPA
College of Global Public Health, New York Uni-
versity

Michael Chaiton, PhD
Dallas Lana School of Public Health, University of
Toronto

Caroline O. Cobb, PhD
Virginia Commonwealth University

Amy L. Copeland, PhD, MP
Louisiana State University

M. Imad Damaj, PhD
Virginia Commonwealth University

Zheng-Ming Ding, PhD
Indiana University School of Medicine

David J. Drobes, PhD
Moffitt Cancer Center

Nancy Fleischer, PhD, MPH
University of Michigan

Evan L. Floyd, PhD
University of Oklahoma

Christie D. Fowler, PhD
University of California, Irvine

Steven Fu, MD, MSCE
Minneapolis VA Health Care System

Cassandra Gipson-Reichardt, PhD
Arizona State University

Britta Hahn, PhD
University of Maryland

Elizabeth C. Hair, PhD
Schroeder Institute at Truth Initiative

Bryan Heckman, PhD
Medical University of South Carolina

Jamiee Heffner, PhD
Fred Hutchinson Cancer Research Center, USA

Brandon J. Henderson, PhD
Marshall University



Helen Kamens, PhD
Pennsylvania State University

Marc Willemsen, PhD
University of Maastricht, The Netherlands

Mary A. Kautz, PhD
National Institute on Drug Abuse, NIH

Hua Yong, PhD
Deakin University

Heather Kimmel, PhD
National Institute on Drug Abuse

Bartosz Koszowski, PhD
Battelle

Anna M. Lee, PhD
University of Minnesota

Joseph Lee, PhD, MPH
East Carolina University

Kabirullah Lutfy, MS, PhD
Western University of Health Science

Meghan Morean, PhD
Oberlin College and Yale University School of
Medicine

Lauren Pacek, PhD
Duke University

David Portnoy, PhD, MPH
FDA

Maria D. Lurdes Queimado, MD, PhD
The University of Oklahoma Health Sciences
Center

Lion Shahab, PhD
University College London, UK

Irina Stepanov, PhD
University of Minnesota

Andrea Weinberger, PhD
Yeshiva University, USA



NETWORK ADVISORY COMMITTEES

Adolescent

Alex Loukas, PhD, University of Texas

Amanda Quisenberry, PhD, Roswell Park
Comprehensive Cancer Center

Basic Science

Brett Froeliger, PhD, Medical University of South
Carolina

Jill Turner, PhD, University of South Carolina

Genetics

Sean David, MD, SM, DPhil, Stanford University

Li-Shiun Chen, MD, MPH, ScD, Washington
University in St. Louis

Global Research

Scott McIntosh, PhD, University of Rochester
Medical Center

Carla Berg, PhD, Emory University

Health Disparities

Kelvin Choi, PhD, National Institutes of Health

Monica Webb Hooper, PhD, Case Western
Reserve University

Policy Research

Andrea Villanti, PhD, MPH, CHES, University of
Vermont

Sara Hitchman, PhD, King's College London

Olivia Maynard (acting), PhD, University of Bristol

Trainee

Allison Borges, Rutgers University

Omar El Shahawy, PhD, New York University

Suchitra Krishnan-Sarin, PhD, Yale University

Treatment Research

Leonie Brose, PhD, King's College London

Jan Blalock, PhD, MD Anderson Cancer Center



ABSTRACT REVIEWERS

Leah R. Abrams, MPH
Claire Adam Spears, PhD
Anna M. Adetona, PhD
Adam C. Alexander, MS
Fatima Alshbool, PharmD, PhD
Muralidharan Anbalagan, PhD
Andrew Anesetti-Rothermel, PhD, MPH
Tamar Antin, DrPH, MAA
Janet Audrain-McGovern, PhD
Alicia Avelar, PhD

Amanda Baker, PhD
Purva Bali, PhD
Dianne Barker, MHS
Andrew Barnes, PhD
Scott T. Barrett, PhD
Jessica Barrington-Trimis, PhD
Alexis Barton, PhD
Emma Beard, PhD
Kevin Beier, PhD
Richard L. Bell, PhD
Morgane Bennett, MPH
Carla J. Berg, PhD, MBA, LP
Karen Bernd, PhD
Olivier Berton, PhD
Melissa Blank, PhD
Julie A. Blendy, PhD
Erika Bloom, PhD
John Blosnich, PhD, MPH
Ben Blount, PhD
Melanie Boeckmann, DrPH
Veronica Boland, BA, Dipl-Psych
Krysten W. Bold, PhD
Tanuja Bordia, PhD
Nicolette Borek, PhD
Tracey Borland, MSc
Kristopher Bough, PhD
R. Thomas Boyd, PhD
Marcella H. Boynton, PhD
Benjamin R. Brady, DrPH
Alison Breland, PhD
Emily Brennan, PhD
Jonathan Bricker, PhD

Marielle Brinkman, BS
Jamie Brown, PhD
M. Justin Byron, PhD

Zachary Cahn, PhD
Deepa R. Camenga, MD, MHS
Jennifer Cantrell, DrPH
Dana Carroll, PhD
Dana Mowls Carroll, PhD
Charles Carusi, PhD
Yessenia Castro, PhD
Sarah Cha, MSPH
Joanne T. Chang, PhD, MPH
Naowarut Charoenca, PhD
Hao Chen, PhD
Julia Cen Chen, PhD
Kai-Wen Cheng, PhD
Julia A. Chester, PhD
Emma Childs, PhD
Mayilvanan Chinnaiyan, PhD
Kelvin Choi, PhD, MPH
Shannon Cigan, PhD student
Caroline Cobb, PhD
John B. Correa, PhD
Ryan Courtney, PhD
Sharon Cox, PhD
MeLisa Creamer, PhD
Alison Cuccia, MSPH
Lauren Czaplicki, PhD

Jennifer Dahne, PhD
Jesse Dallery, PhD
V́ctor R. De Jeśs, PhD
Gerald A. Deehan Jr, PhD
Rachel Denlinger-Apte, MPH
Andre Der-Avakian, PhD
Sarah Dermody, PhD
Elise E. DeVito, PhD
Lori Diemert, MSc
Lisa Dierker, PhD
Joseph Ditre, PhD
Joseph W. Ditre, PhD
Sergio Dominguez-Lopez, PhD



SRNT

SRNT 2019 • SAN FRANCISCO, CALIFORNIA

Neal Doran, PhD
William Doyon, PhD
Maria Duaso, PhD
Jolene Dubray, MSc
Davide Dulcis, PhD
Sarah Durkin, PhD

Katie East, MSc
Brian Eastwood, MSc
Kathryn C. Edwards, PhD
Marissa A. Ehringer, PhD
Thomas Eissenberg, PhD
Omar El-Shahawy, MD, MPH, PhD
Sugantha Priya Elayapillai, PhD
Tara Elton-Marshall, PhD
Anna E. Epperson, PhD
Cam Escoffery, PhD
Ulrich Ettinger, PhD
David Evans, PhD

David Fakunle, PhD
Babalola Faseru, MD, MPH
David Fedele, PhD
John Fedota, PhD
Amy Ferketich, PhD
Roberta Ferrence, PhD
Allison Ford, PhD
Matthew Ford, PhD
Theodore C. Friedman, MD, PhD
Michael Fung, PhD candidate

Suzanne Gage, PhD
Stacey Gagosian, BA
Kristi E. Gamarel, PhD, EdM
Vengatesh Ganapathy, PhD
Ollie Ganz, MPH, DrPH candidate
Claire Garnett, PhD
Carol Gartner, PhD
Olivier George, PhD
Laura Gibson, PhD
Daniel P. Giovenco, PhD, MPH
Allison Glasser, MPH
Reema Goel, PhD
Hyma P. Gogineni, MSc, PharmD, TTS, BCACP
Lisa R. Goldberg, PhD

Renee Goodwin, PhD, MPH
Terry Gordon, PhD
Steven Grant, PhD
Marisa Greenberg, MA
Elizabeth Greenhalgh, PhD
Larry Grover, PhD
Noah Gubner, PhD
Ashleigh Guillaumier, PhD
Alexandra Guttentag, PhD candidate

Matthew S. Halquist, PhD
Patrick Hammett, PhD
Ayman Hamouda, PhD
Sheketha R. Hauser, PhD
Andrew Hawkey, PhD
Rashelle Hayes, PhD
Lisa Henriksen, PhD
Aleksandra Herbec, MSc
Emily Herbert, PhD
Norval Hickman, PhD, MPH
Paul Hillery, PhD
Josephine Hinds, MS
Sara Hitchman, PhD
Andrea Hobkirk, PhD
William Horton, PhD
Rebecca Howell, MD, PhD
Andrew Hyland, PhD

Kia J. Jackson, PhD
Sarah Jackson, PhD
Megan Jacobs, MPH
Tina Janel, MA
Vipin Jain, PhD
Nancy C. Jao, MS
Sandra Japuntich, PhD
Navitha Jayakumar, MPH candidate
Cynthia Jones, PhD
Dina M. Jones, MPH
Laura Juliano, PhD
Zuzana Justinova, MD, PhD

Lucie Kalousova, PhD
Joshua L. Karelitz, MS, MA
Sabrina Kastaun, PhD
Annette Kaufman, PhD, MPH



Pam Kaufman, PhD
Megan Kelly, PhD
Peter Kelly, PhD
Ryan David Kennedy, PhD
Darla Kenzor, PhD
Samir Khariwala, MD
Fadi Khasawneh, PharmD, PhD
Azieb Kidanu, MPH
Catherine Kimber, BSc
Brian King, PhD, MPH
Jessica L. King, PhD
Elizabeth Klein, PhD, MPH
Elias Klemperer, PhD student
Theodore P. Klupinski, PhD
Loren Kock, MSc
Grace Kong, PhD
Tellervo Korhonen, PhD
Leon Kosmider, PhD, PharmD
Michael Kotlyar, PharmD
Daniel Kotz, PhD
Paul Krebs, PhD
Munir Gunes Kutlu, PhD
Christina Kyriakos, MPH

Valeria Lallai, PhD
Glenda Lassi, PhD
Adrienne Lent, MPH, MBA
Mark LeSage, PhD
Jingjing Li, MD, MPH
Ming Li, PhD
Isaac Lipkus, PhD
Roger Little, PhD
Yutao Liu, MD, PhD
Erin Lo, MPH
Amy Lossie, PhD
Shahrdad Lotfipour, PhD
Paula Lozano, PhD

Venkateshwar Madka, PhD
Ursula Martinez, PhD
Amanda R. Mathew, PhD
Olivia Maynard, PhD
Darren Mays, PhD, MPH
Jeremy McAleer, PhD
Kristen McCarter, PhD

Joe McClernon, PhD
Erin McClure, PhD
Máirtín McDermott, PhD
Ellen Meier, PhD
Eline Meijer, PhD
Raul Mejia, MD, PhD
Melissa Mercincavage, PhD
Paul Meyer, PhD
Julie M. Miwa, PhD
Farook Moonschi, PhD
Meghan Moran, PhD
Kylie Morphett, PhD
Paul D. Mowery, MA
Jennifer E. Murray, PhD

Gera Nagelhout, PhD
George J. Nahhas, PhD, MPH
Uma S. Nair, PhD
Motohiro Nakajima, PhD
Raad Nashmi, PhD
Felix Naughton, PhD
Raymond Niaura, PhD
Nicole Nicksic, PhD, MPH
Russell Nye, MS

Shawn O'Connor, PhD
Saidhbhe O'Riordan, PhD
Heidi O'Neill, PhD
Jason A. Oliver, PhD

Matthew Palmatier, PhD
Amanda Palmer, MA
Raina Pang, PhD
Su Hyun Park, PhD, MPH
Meghan Passey, PhD
Minal Patel, PhD, MPH
Theresa Patten, PhD Candidate
Christine Paul, PhD
Jim Pauly, PhD
Jennifer Pearson, PhD, MPH
Robert Pechnik, PhD
MacKenzie Peltier, PhD
Xiomara A. Perez, PhD
Giselle Perez-Lougee, PhD
Nicole Petersen, PhD



SRNT

SRNT 2019 • SAN FRANCISCO, CALIFORNIA

Wallace Pickworth, PhD
Barbara Pineiro, PhD
Lindsay Pitzer, PhD
Ana Pocivavsek, PhD
Pallav Pokhrel, PhD, MPH
Jonathan Pollock, PhD
Derek Pope, PhD
Lucy Popova, PhD
Phylcia R.L. Porter, MPH, MSL
Steven Proctor, PhD

Amanda Quisenberry, PhD

Rajan Radhakrishnan, PhD
Shafiqur Rahman, PhD
Bethany Raiff, PhD
Ilangoan Ramachandran, MSc, MPhil, PhD
Satish Ramalingam, PhD
Jessica Rath, PhD, MPH, CHES
Ryan C. Reikowsky, MA, MPH
Chad J. Reissig, PhD
Chris Richards, PhD
Brittany Riley, PharmD, BCPS
Megan E. Roberts, PhD
Erin Rogers, DrPH
Alana Rojewski, PhD
Hans Rollema, PhD
Alexa R. Romberg, PhD
Shyanika Rose, PhD, MA
Melanie Roys, MS
Andrea Rozema, PhD

Balaji Sadhasivam, PhD
Travis Salisbury, PhD
Yuvaraj Sambandam, PhD
Federico Sanabria, PhD
Genevieve Sansone, PhD
Youssef Sari, PhD
Scott Schepers, PhD
Taneisha Scheuermann, PhD
Heath Schmidt, PhD
Megan Schroeder, PhD
Robert Schwartz, PhD
Michael Scofield, PhD
Michelle Scollo, PhD

Christopher Seitz, DrPH, MPH
Ursula W. Serhan, PhD
Ce Shang, PhD
Eva Sharma, PhD, MPH
Scott Sherman, MD, MPH
Mohammed Shoaib, PhD
Sundar S. Shrestha, PhD
Mohammad Siahpush, PhD
Vani Simmons, PhD
Erikas Simonavicius, MSc
Eliza Skelton, PhD
Jack Smethells, PhD
Charlie Albert Smith, MSc
Philip Smith, PhD
Tracy T. Smith, PhD
Roger G. Sorensen, PhD, MPA
Eric Soule, PhD, MPH
Sade Spencer, PhD
Rahul Srinivasan, MD, PhD
Jeff Stein, PhD
Marc Steinberg, PhD
Elise Stevens, PhD
Jerry Stitzel, PhD
Shelley Su, PhD
Erin Sutfin, PhD
Matthew Sutherland, PhD
Alan Sved, PhD
Natashia Swalve, PhD
Maggie M. Sweitzer, PhD

Soha Talih, PhD
Andy Tan, PhD, MPH, MBA, MBBS
Gemma Taylor, PhD
Kristie A. Taylor, PhD
David Thomas, PhD
James F. Thrasher, PhD
Andrea Titus, MPP
Ildiko Tombor, PhD
Mark J. Travers, PhD, MS
James Tsai, MD, MPH, CPH
Shang-Yi Anne Tsai, PhD, MSPH

Carlijn M. van der Aalst, PhD
David J. Vandenberg, PhD
Damon Vidrine, PhD



Jennifer Vidrine, PhD
Roger Vilaradaga, PhD
Christine Vinci, PhD
Linda von Weymarn, PhD
Milkie Vu, PhD

Andrew Waa, PhD
Hannah Walsh, MSc, MRes
Kevin M. Walton, PhD
Lanqing Wang, PhD
Teresa Wang, PhD, MS
Kay L. Wanke, PhD, MPH
Aaron Waters, MA
Clifford H. Watson, PhD
Noreen Watson, PhD
Marcus M. Weera, PhD
Heidi Wehring, PharmD
Kevin Welding, PhD
Reagan Wetherill, PhD
Cora Lee Wetherington, PhD
Cassidy White, BA
Paul Whiteaker, PhD
Jenna J. Wintemberg, PhD, MPH, CHES
Kara Wiseman, MPH, PhD
Susan Wright, PhD
Da-Yu Wu, PhD
Olivia Wynne, PhD

Santosh Yadav, PhD
Jessica Yingst, MS

Rachel D. Zamoiski, PhD, MPH
Luis Zavala-Arciniega, MSc
Nurulain T. Zaveri, PhD
Daniel Zeng, PhD
Bo Zhang, PhD
Ivori Zvorsky, BA

SRNT would like to thank the Program Committee members and abstract reviewers for the effort and expertise they contributed to the 2019 SRNT Annual Meeting.



PAST PRESIDENTS AND PROGRAM CHAIR(S)

Year	President	Program Chair(s)
1995	Ovide Pomerleau, PhD	Kenneth Perkins, PhD, Chair
1996	John Hughes, PhD	Steve Heishman, PhD, Chair
1997	Neal Benowitz, MD	Steve Heishman, PhD, Chair
1998	Maxine Stitzer, PhD	Scott J. Leischow, PhD, Chair
1999	Jack Henningfield, PhD	Joy Schmitz, PhD, Chair
1999-2000	Dorothy Hatsukami, PhD	David Wetter, PhD, Chair
2000-2001	William Corrigan, PhD	David Wetter, PhD, Chair Thomas Eissenberg, PhD, Co-Chair
2001-2002	Kenneth Perkins, PhD	Thomas Eissenberg, PhD, Chair
2002-2003	Harry Lando, PhD	Thomas Eissenberg, PhD, Chair Laura Cousino Klein, PhD, Co-Chair
2003-2004	Nancy Rigotti, MD	Laura Cousino Klein, PhD, Chair David Drobles, PhD, Co-Chair
2004-2005	Ken Warner, PhD	David Drobles, PhD, Chair Suzanne Colby, PhD, Co-Chair Robert West, PhD, Co-Chair
2005-2006	David Balfour, PhD	Suzanne Colby, PhD, Chair Eric C. Donny, PhD, Co-Chair Jennifer Tidey, PhD, Co-Chair
2006-2007	Ellen R. Gritz, PhD	Eric C. Donny, PhD, Chair Janet E. Audrain-McGovern, PhD, Co-Chair Cynthia A. Conklin, PhD, Co-Chair
2007-2008	Ray Niaura, PhD	Janet Audrain-McGovern, PhD, Chair Bernard Le Foll, MD, PhD, Co-Chair Robert Scholl, PhD, Co-Chair



Year	President	Program Chair(s)
2008-2009	Scott J. Leischow, PhD	Bernard Le Foll, MD, PhD, Chair Marcus Munafò, PhD, MSc, Chair Ann McNeill, BSc, PhD, Co-Chair Robert A. Schnoll, PhD, Co-Chair
2009-2010	Sue Curry, PhD	Robert A. Schnoll, PhD, Chair Darlene Brunzell, PhD, Co-Chair Lisa Dierker, PhD, Co-Chair
2010-2011	Caryn Lerman, PhD	Thomas Gould, PhD, Chair Lisa Dierker, PhD, Co-Chair Megan Piper, PhD, Co-Chair
2011-2012	Robert West, PhD	Megan Piper, PhD, Chair Joanna Cohen, PhD, Co-Chair Kelly Cosgrove, PhD, Co-Chair
2012-2013	Gary Swan, PhD	Joanna Cohen, PhD, Chair Cristiano Chiamulera, PharmD, Co-Chair Sean P. David, MD, SM, DPhil, Co-Chair
2013-2014	Anne Joseph, MD, MPH	Sean P. David, MD, SM, DPhil, Chair Angela Attwood, PhD, Co-Chair Judith Prochaska, PhD, MPH, Co-Chair
2014-2015	Thomas Gould, PhD	Judith Prochaska, PhD, MPH, Chair Maciej L. Goniewicz, PhD, PharmD Natalie Walker, PhD
2015-2016	Robin Mermelstein, PhD	Natalie Walker, PhD, Chair Maciej L. Goniewicz, PhD, PharmD Rachel Grana, PhD, MPH
2016-2017	Deborah Ossip, PhD	Maciej L. Goniewicz, PhD, PharmD Rachel Grana, PhD, MPH Daniel Kotz, PhD, Msc, MPH
2017-2018	Judith Prochaska, PhD, MPH	Rachel Grana Mayne, PhD, MPH Lisa Fucito, PhD Gideon St.Helen, PhD
2018-2019	Marina Picciotto, PhD	Lisa Fucito, PhD Gideon St.Helen, PhD Andrea Villanti, PhD, MPH



REGISTRATION

Conference registration will be open daily located in the **Yosemite Foyer (Ballroom Level)** during the Annual Meeting. Hours for the SRNT registration desk during the conference are as follows:

Tuesday, February 19.....	4:30 p.m.-6:30 p.m.
Wednesday, February 20	7:00 a.m.-7:00 p.m.
Thursday, February 21	7:15 a.m.-5:00 p.m.
Friday, February 22	7:15 a.m.-5:00 p.m.
Saturday, February 23.....	8:00 a.m.-12:15 p.m.

EDUCATIONAL OBJECTIVES

- Address nicotine and tobacco’s role in the changing health care environment
- Describe new research and clinical data on the effects of nicotine and tobacco
- Discuss recent advances in nicotine and tobacco research
- Highlight international research on tobacco control
- Through scientific exchange, integrate current research with implications for clinical practice
- Address clinical and public health implications of concurrent use of tobacco with other psychoactive substances and drugs.

TARGET AUDIENCE

The 25th Annual Meeting of SRNT is geared toward individuals involved in the research of nicotine and tobacco. This includes basic, clinical, policy, and public health scientists from academia, government, and industry.

Please note: Symposia that take place in advance of the meeting, after the meeting’s conclusion, or during evening hours are not part of the SRNT Official Program unless specifically noted. The Program Committee has not reviewed the scientific content of Satellite Symposia. Satellite Symposia presenters are responsible for providing disclosures during their session.



LUNCHES

Boxed lunches will be served on Thursday and Friday (see below). Bring your badge with you, as it will serve as your ticket for lunch.

Thursday, February 21, 2019

Boxed lunches will be distributed in the SRNT CENTRAL – Yosemite Room (Ballroom Level) starting at 11:15 a.m.

Plan to attend Poster Session 1 in the Grand Ballroom A (Grand Ballroom Level) while eating your boxed lunch!

Friday, February 22, 2019

Boxed lunches will be distributed in the SRNT CENTRAL – Yosemite Room (Ballroom Level) starting at 11:15 a.m.

Plan to attend Poster Session 3 in the Grand Ballroom A (Grand Ballroom Level) while eating your boxed lunch!



POSTER SESSION SETUP SCHEDULE

Poster sessions have specific times designated for the authors to be present to discuss their posters with attendees in the Hilton San Francisco Union Square Hotel meeting space: **Grand Ballroom A (Grand Ballroom Level)**. Have your SRNT badge at all times to gain access to this area. An attendant will be checking badges at all times. All posters must be removed immediately during the designated dismantle time for each session outlined below.

The schedule for poster presentation assembly, authors present, and dismantle is as follows:

Thursday, February 21

Poster Session 1

10:00 a.m.-11:00 a.m. Presenters set up posters
11:30 a.m.-1:00 p.m. **Poster Session 1 (Presenters available at their poster)**
1:00 p.m.-2:00 p.m. Presenters remove their poster

Poster Session 2

2:30 p.m.-3:30 p.m. Presenters set up posters
4:30 p.m.-6:00 p.m. **Poster Session 2 (Presenters available at their poster)**
6:00 p.m.-6:30 p.m. Presenters remove their poster

Friday, February 22

Poster Session 3

10:00 a.m.-11:00 a.m. Presenters set up posters
11:30 a.m.-1:00 p.m. **Poster Session 3 (Presenters available at their poster)**
1:00 p.m.-1:30 p.m. Presenters remove their poster

Poster Session 4

2:30 p.m.-3:30 p.m. Presenters set up posters
4:30 p.m.-6:00 p.m. **Poster Session 4 (Presenters available at their poster)**
6:00 p.m.-6:30 p.m. Presenters remove their poster

Saturday, February 23

Poster Session 5

10:00 a.m.-11:00 a.m. Presenters set up posters
12:00 noon-1:30 p.m. **Poster Session 5 (Presenters available at their poster)**
1:30 p.m.-2:00 p.m. Presenters remove their poster



BADGES

Your badge will admit you to all the educational sessions, welcome reception, and poster sessions at the Annual Meeting. ***Please wear your badge at all times. Thank you.***

SPEAKER READY ROOM

Important Information for all Oral Presentations:

The Speaker Ready Room is located in the **Green Room meeting room (Grand Ballroom Level)**. Each speaker using computerized audio-visual equipment for their presentation at the 2019 Annual Meeting must report to the Speaker Ready Room to load their presentation on the laptop computer that will be used in their session room. Please review the following schedule and note these important times to stop by at least 24 hours prior to your scheduled session.

A technician from our audio-visual company will be available in the Speaker Ready Room to assist you. The Speaker Ready Room will be open at the following times:

- Tuesday, February 19..... 4:30 p.m.-6:30 p.m.
- Wednesday, February 20 12:00 noon-7:00 p.m.*
- Thursday, February 21 7:00 a.m.-5:00 p.m.
- Friday, February 22 7:30 a.m.-5:00 p.m.
- Saturday, February 23.....7:30 a.m.-11:00 a.m.

*All Pre-Conference workshop speakers on Wednesday, February 20, should report directly to their meeting room. An audio-visual tech will be available to assist upon your arrival. Please report at least 20-30 minutes prior to the session start time.

If Your Presentation Date/Time is...	Then Your Time to Load Your Presentation is...
Thursday, February 21 between 8:00 a.m.-12:00 noon	Report to the Speaker Ready Room between 12:00 noon-7:00 p.m. on Wednesday, February 20
Thursday, February 21 between 1:00 p.m.-5:00 p.m.	Report to the Speaker Ready Room no later than 10:30 a.m. on Thursday, February 21
Friday, February 22 between 8:00 a.m.-12:00 noon	Report to the Speaker Ready Room no later than 3:00 p.m. on Thursday, February 21
Friday, February 22 between 1:00 p.m.-5:00 p.m.	Report to the Speaker Ready Room no later than 10:30 a.m. on Friday, February 22
Saturday, February 23 between 8:00 a.m.-12:00 noon	Report to the Speaker Ready Room no later than 3:00 p.m. on Friday, February 22



MEMBERS MEETINGS

The SRNT will hold its Members Meeting on Friday, February 22, from 7:30 a.m.-8:15 a.m. in the **Imperial Ballroom A (Ballroom Level)**. All SRNT members are encouraged to attend.

2018-2019 SRNT BOARD OF DIRECTORS

President, 2018-2019

Marina Picciotto, PhD

President-Elect, 2018-2019

Suzanne Colby, PhD

Immediate Past-President, 2018-2019

Judith Prochaska, PhD, MPH

Secretary/Treasurer, 2017-2020

Megan Piper, PhD

Member Delegate At-Large, 2016-2019

Jennifer McClure, PhD

Member Delegate, North America, 2016-2019

Jasjit Ahluwalia, MD, MPH

Member Delegate, Europe, 2018-2021

Caitlin Notley

Member Delegate, AAOLA, 2017-2020

Mira B. Aghi, PhD

Executive Director, Ex Officio Board Member

Bruce Wheeler

Journal Editor-in-Chief

Marcus Munafò, PhD

Dean, SRNT University

Natalie Walker, PhD

FUTURE SRNT MEETINGS

SRNT 26th Annual Meeting

March 11-14, 2020

Hilton New Orleans Riverside, New Orleans, Louisiana

SRNT 27th Annual Meeting

February 24-27, 2021

Hilton Baltimore, Baltimore, Maryland



REMEMBRANCES OF PIONEERS FOR WHOM SRNT'S 2018 AWARDS ARE NAMED

SRNT's annual awards presentation will be Friday, February 22, 1:00 p.m.-1:30 p.m., in the **Grand Ballroom B (Grand Ballroom Level)**. The awards are named after pioneers in the field of nicotine and tobacco research, and we are pleased to remember those pioneers.

THE JOHN SLADE AWARD

The John Slade Award honors individuals who have made outstanding contributions to public health and tobacco control through science-based public policy and public advocacy.

2019 Award Recipient:

Geoffrey T. Fong, PhD, FRSC, FCAHS

Professor of Psychology and Public Health and Health Systems,
University of Waterloo

Senior Investigator, Ontario Institute for Cancer Research

Principal Investigator, International Tobacco Control Policy Evaluation Project (ITC Project)

Waterloo, Ontario

Canada

JOHN SLADE

Dr. John Slade was an expert on the treatment of alcohol, tobacco, and drug addiction and one of America's pioneer advocates for tobacco control.

He was a member of the team that conducted the first scholarly analysis of previously secret documents from the Brown and Williamson Tobacco Company, which formed the basis for the film "The Insider." John's analysis led to a landmark series of articles in the *Journal of the American Medical Association* in 1995, as well as a book, "The Cigarette Papers." His groundbreaking research to prove that cigarettes are nicotine delivery devices helped make it possible for the Food and Drug Administration to claim regulatory authority over tobacco products under then-FDA Commissioner Dr. David Kessler.

John was appointed Professor of Medicine, Robert Wood Johnson Medical School of the UMDNJ, in 1998. He emerged as a leader in substance abuse prevention and tobacco control for the state of New Jersey through his teaching and clinical work as well as through his active involvement with the Medical Society of New Jersey and the New Jersey Public Health Association. John played a major role in helping New Jersey develop its tobacco prevention and treatment program, funded as part of the 1998 \$206 billion settlement with tobacco companies.

He co-edited the first major clinical textbook on nicotine addiction and founded the Committee on Nicotine Dependence of the American Society of Addiction Medicine (ASAM).



2019 NEW INVESTIGATOR BEST ABSTRACT AWARD RECIPIENTS

Robyn Wootton, PhD

Research Associate in Genetic Epidemiology

Tobacco and Alcohol Research Group, School of Psychological Science,

University of Bristol and the MRC Integrative Epidemiology Unit, University of Bristol, Bristol, UK

CAUSAL EFFECTS OF LIFETIME SMOKING ON RISK FOR DEPRESSION AND SCHIZOPHRENIA. EVIDENCE FROM A MENDELIAN RANDOMISATION STUDY

Hongchao Guo, PhD

Stanford Cardiovascular Institute, Palo Alto, CA, USA

SINGLE-CELL RNA-SEQUENCING OF HUMAN EMBRYONIC STEM CELL DIFFERENTIATION DELINEATES ADVERSE EFFECTS OF NICOTINE ON EMBRYONIC DEVELOPMENT

Ilze Bogdanovica, MSc, MSc, PhD

Senior Research Fellow/Cancer Research UK Career Development Fellow

Division of Epidemiology and Public Health,

University of Nottingham & UK Centre for Tobacco and Alcohol Studies, England, UK

INVESTIGATING SWITCHING BETWEEN TOBACCO PRODUCTS IN RELATION TO IMPLEMENTATION OF PLAIN PACKAGING LEGISLATION IN THE UNITED KINGDOM

Krysten W. Bold, PhD

Associate Research Scientist

Yale School of Medicine, Department of Psychiatry, New Haven, CT, USA

LONGITUDINAL FINDINGS FROM A RANDOMIZED CLINICAL TRIAL OF VARENICLINE FOR ALCOHOL USE DISORDER WITH COMORBID CIGARETTE SMOKING

THE JARVIK-RUSSELL NEW INVESTIGATOR AWARD

The Jarvik-Russell Young Investigator Award, named after Murray Jarvik and Michael Russell, recognizes scientists early in their careers who have made extraordinary contributions to the field of nicotine and tobacco research.

2019 Award Recipient:

Kelvin Choi, PhD, MPH

National Institute on Minority Health and Health Disparities, Division of Intramural Research, National Institutes of Health, Bethesda, Maryland, USA

MURRAY E. JARVIK

Dr. Murray Jarvik was born in New York City in 1923. Following medical school, Murray worked at the Yerkes Laboratory in Florida. It was here that he serendipitously witnessed a monkey that would smoke cigarettes. A Fellowship at Mount Sinai Hospital in New York followed, where Murray became one of the pre-eminent researchers studying a newly discovered substance: LSD.

LSD research pivoted Murray into the emerging field of psychopharmacology in the mid-1950s and to a professorial position at the newly created Albert Einstein School of Medicine. It was here that Murray established himself as a premier researcher on effects of drugs on learning and behavior.



Murray's interests in the mid-1960s turned toward tobacco smoking. Although Murray continued, initially, to study the effects of other drugs and memory, he eventually shifted his focus to smoking and nicotine addiction almost entirely.

One of the first projects he attempted, spurred by the very memorable observation at Yerkes, was to attempt to get monkeys to smoke. This was partially successful and led to experiments with humans and rats so that by 1970 Murray had collected sufficient data to suggest that nicotine was key in the reinforcement of smoking. His work was included in subsequent Surgeon General Reports on smoking and nicotine addiction.

Perhaps Murray Jarvik's most notable achievement was work done with Jed Rose in the 1980s investigating the possibility of delivering nicotine through the skin in sufficient quantities to affect smoking behavior. At first, their approach was quite simple, a basic poultice of nicotine. After much development, they were able to patent the concept of a nicotine transdermal patch, which they turned over to UCLA. It soon made it into production as the second FDA-approved pharmacologic treatment for smoking cessation after nicotine gum. With both established efficacy and ease of use, it was highly successful, for several years among the top three most profitable patents for the University of California.

MICHAEL RUSSELL

By the 1960s, the emerging evidence of the danger of cigarette smoking was clear, but there was very little understanding of why people smoked. Cigarette smoking was generally thought of as a habit, with pharmacological factors receiving little or no attention.

Michael Russell was the man who did most to revolutionize our understanding. His research led to the 1988 report of the US Surgeon General, *Nicotine Addiction*, which finally brought recognition that cigarette smoking is a classic drug dependence. Russell was a psychiatrist in training at the Maudsley Hospital, in south London, when he chose the topic of cigarette smoking for his research thesis in 1967. Based on his review of what was then fragmentary research literature, he concluded in a 1971 paper that the drug nicotine was the motivating force underlying smoking behavior. He made the study of the interacting pharmacological and psychological determinants of tobacco dependence his life's work.

Mike is regarded by many as the father of effective treatment to help smokers quit. But he is probably best known in the cessation field for a non-pharmacological intervention. In 1979 he published a trial examining the effectiveness of brief advice to quit smoking given by GPs in the course of routine consultations. The one-year success rate was 5%, compared with less than 1% in controls. A successful trial of nicotine chewing gum combined with brief advice in primary care followed. Mike Russell moved toward the concept of an integrated district smoking cessation service, in which routine delivery of advice and pharmacological therapy in primary care was combined with intensive clinic support. That vision has now been realized in Great Britain's National Health Service.

THE FERNÖ CLINICAL RESEARCH AWARD

The Fernö Award, named after Ove Fernö, honors scientists who have made groundbreaking advances in clinical research in one of three areas: (1) the pharmacological and behavioral actions of nicotine; (2) increased understanding on why people use tobacco; or (3) interventions to prevent tobacco use, to encourage or help tobacco users stop, and/or to reduce the adverse effects of tobacco use.



2019 Award Recipient:

Caryn Lerman, PhD

Vice Dean for Strategic Initiatives, Perelman School of Medicine
John H. Glick, MD Professor in Cancer Research
Department of Psychiatry, University of Pennsylvania
Philadelphia, Pennsylvania, USA

OVE FERNÖ

Ove Fernö was the inventor of nicotine replacement (NR). He was born in Gothenburg in 1916 and was trained as an organic chemist at the University of Lund, Lund, Sweden. During the late 1960s and 70s he was responsible for the development of the first NR product—a chewing gum. Tens of millions of smokers have used nicotine gum to aid their cessation attempts. In the United States, Dr. Murray Jarvik and Dr. Nina Schneider were the first to experiment with the gum; they became great ambassadors and conducted many important studies. The nicotine gum was first presented at the World Conference on Smoking and Health in New York in 1975. Today, NR is marketed in some 70 countries. Ove Fernö's thinking and foresight, and perhaps personal circumstances, made him a decisive driver in the development of Nicotine Replacement. His work has helped countless smokers to break the dependence. But he was also a great man to spend an evening with, usually over a glass of beer, to speculate about the future of NT and other matters of importance, very often philosophy.

2019 SRNT TRAVEL AWARD WINNERS

Aleksandra Alcheva, PhD, USA
Sabeeh Baig, USA
Kai-Wen Cheng, USA
Shannon S. Cigan, USA
Adam Cole, PhD, Canada
Laurel Curry, PhD, USA
Ghazaul Dezfuli, USA
Katherine East, United Kingdom
Noah Gubner, PhD, USA
Marzena Hiler, PhD, USA
Mirte Kuipers, PhD, Netherlands

Marin Kurti, PhD, USA
Tzu Tsun Luk, Hong Kong
Olusegun Owotomo, USA
Rebecca Richmond, PhD, United Kingdom
Kevin Schroth, PhD, USA
Matthew Stone, USA
Minoru Takeuchi, PhD, Japan
Soha Talih, PhD, Lebanon
Natalie Voos, PhD, USA
Wei Xia, Hong Kong

2019 SRNT HEALTH DISPARITIES TRAVEL SCHOLARS

Priti Bandi, USA
John Correa, PhD, USA
Patricia Escobedo, USA
Josephine T. Hinds, USA
Asti Jackson, PhD, USA
Dina Jones, MPH, USA
Stella Lee, USA
Anuja Majmundar, USA
Ahn Ngo, USA
Raina Pang, USA
Michael Ramsey, USA
Ce Shang, PhD, USA
Alayna Tackett, PhD, USA



2019 SRNT SPONSORS & EXHIBITORS

Plan time in your schedule to visit with the SRNT sponsors and exhibitors. They are located in SRNT CENTRAL in the **Yosemite Room (Ballroom Level)**.

Thanks to all the companies exhibiting this year. SRNT appreciates their financial support!

Exhibit Hours:

Wednesday, February 20, 2019	6:45 p.m.-8:00 p.m.
Opening Welcome Reception	
Thursday, February 21, 2019	9:00 a.m.-3:00 p.m.
Friday, February 22, 2019	9:30 a.m.-3:00 p.m.

SRNT SUPPORTORS

SRNT would like to thank Battelle, GlaxoSmithKline, Pfizer, La Jolla Alcohol Research, Inc., Achieve Life Sciences, and MicroAutomation for their financial support of the 2019 annual meeting and SRNT’s mission to stimulate the generation and dissemination of new knowledge concerning nicotine in all its manifestations, from cellular to societal.

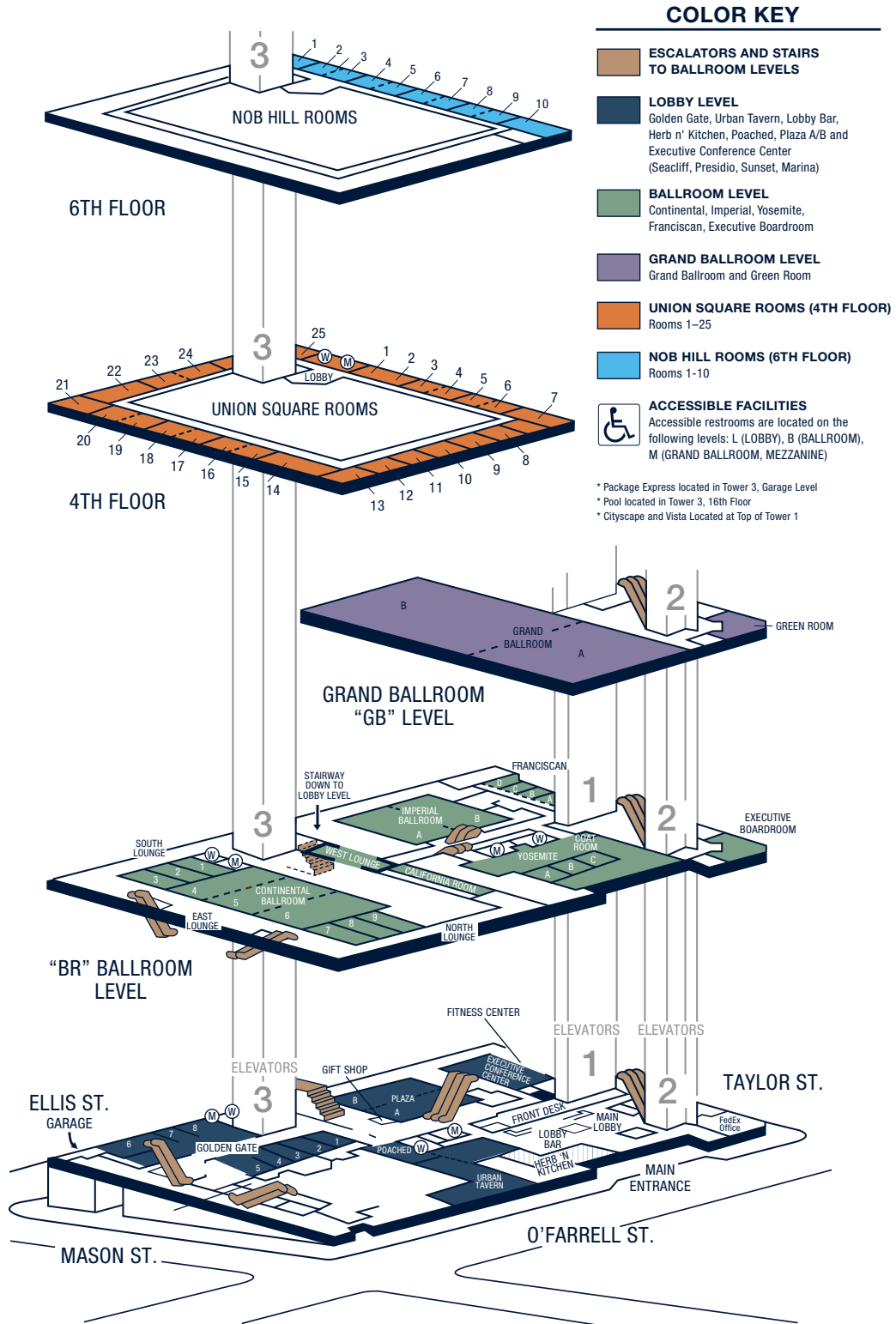
EVALUATION

Thank you again for attending the meeting! We hope you enjoy the sessions and San Francisco, California, USA. An overall program evaluation will be emailed to all Annual Meeting participants following the conference. Your feedback is greatly appreciated!



MEETING ROOM FLOOR PLANS

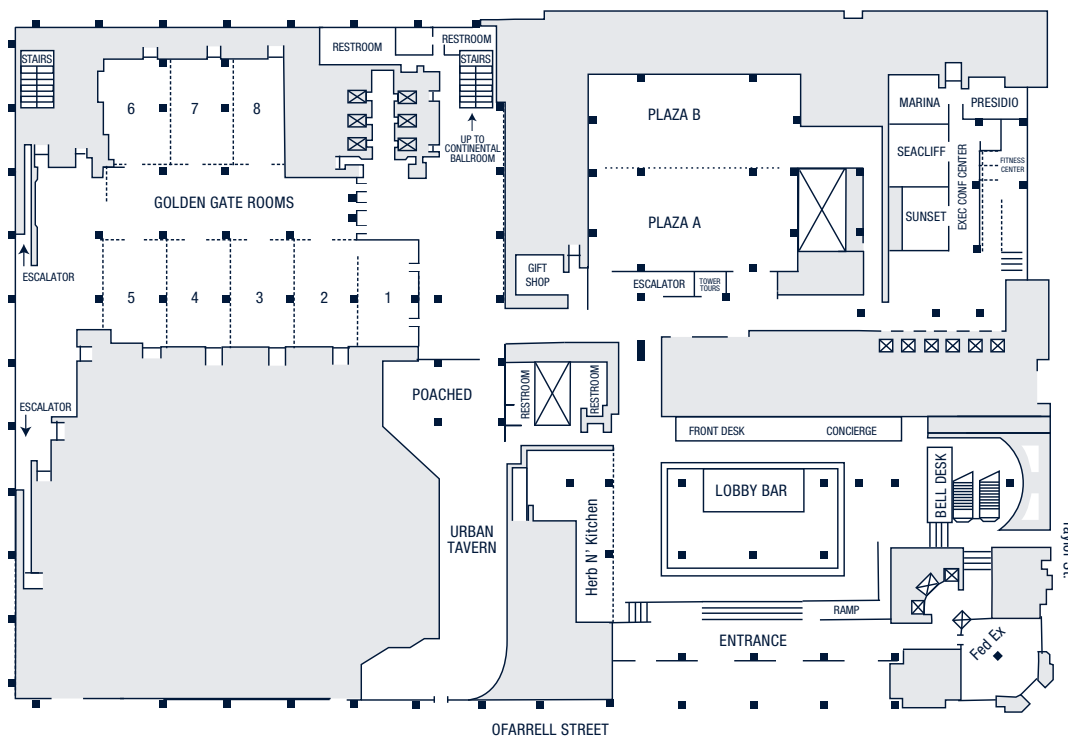
Hilton San Francisco Union Square Hotel • Conference & Event Rooms



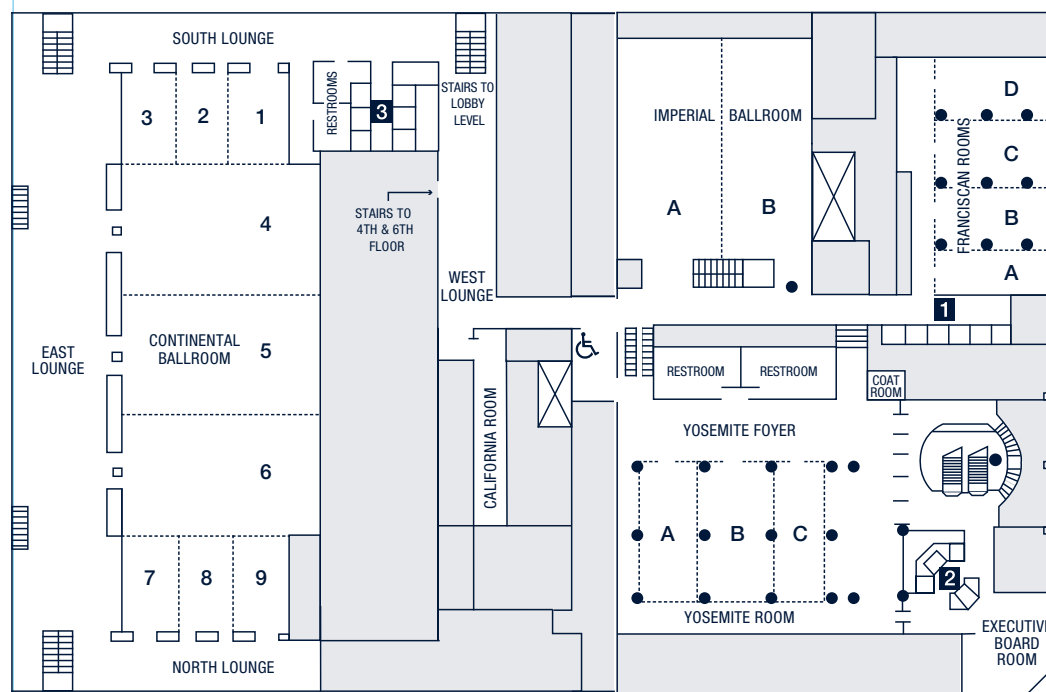


MEETING ROOM FLOOR PLANS

Hilton San Francisco Union Square Hotel • Lobby Level (L) • Accessible from Towers 1,2,3



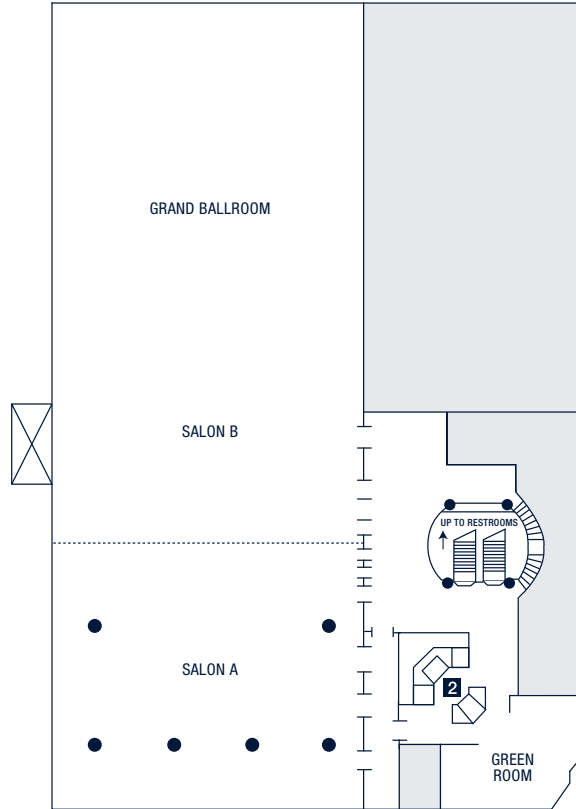
Hilton San Francisco Union Square Hotel • Ballroom Level (BR) • Accessible from Towers 1,2,3



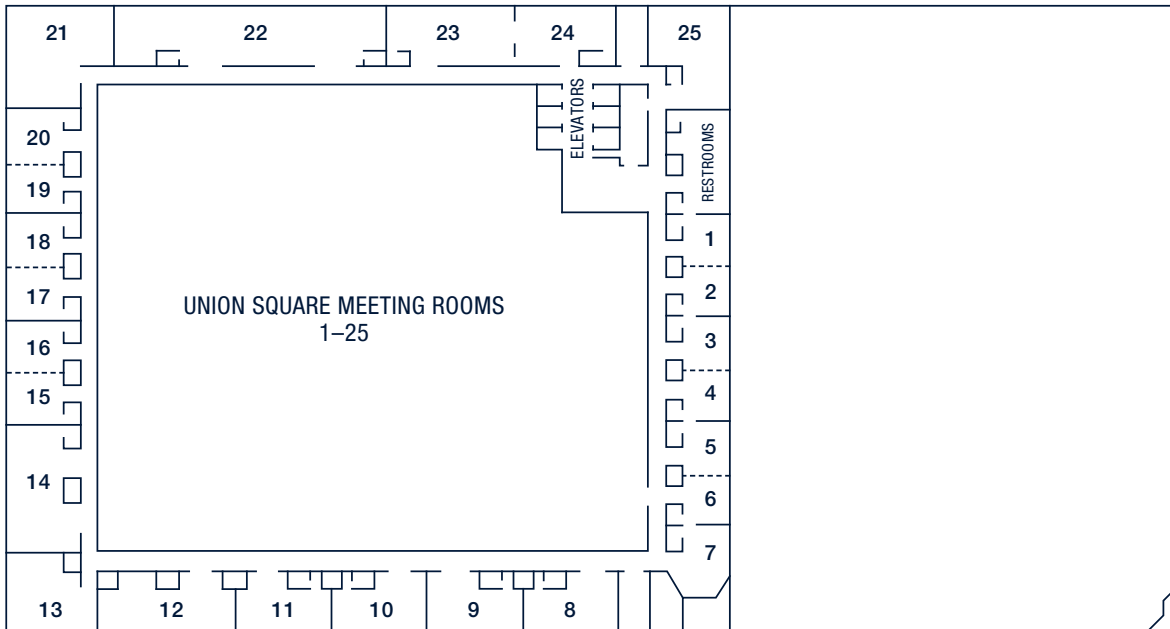


MEETING ROOM FLOOR PLANS

Hilton San Francisco Union Square Hotel • Grand Ballroom Level (GB) • Accessible from Tower 2



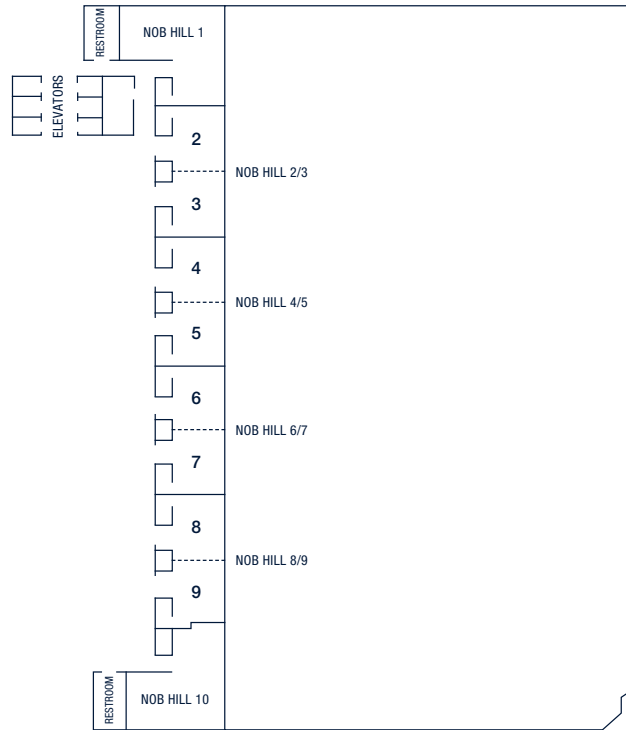
Hilton San Francisco Union Square Hotel • 4th Floor (Union Square) • Accessible from Tower 3



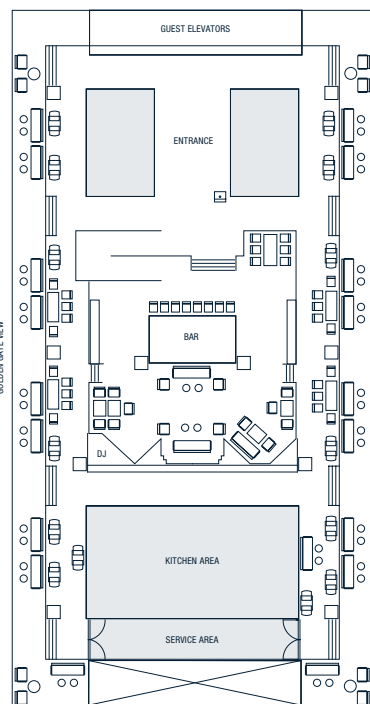
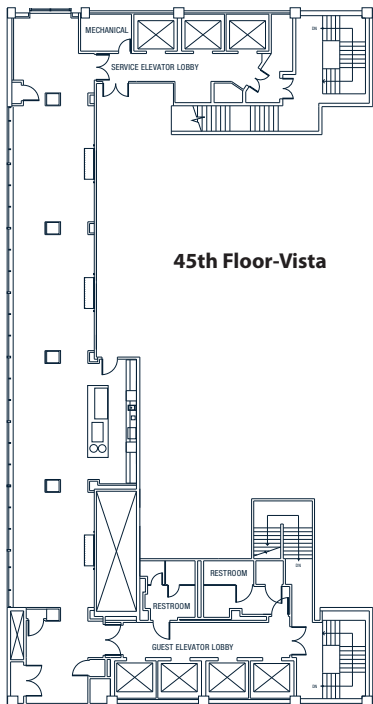


MEETING ROOM FLOOR PLANS

Hilton San Francisco Union Square Hotel • 6th Floor (Nob Hill) • Accessible from Tower 3



Hilton San Francisco Union Square Hotel • 45th (Vista) & 46th (Cityscape) Floors • Accessible from Tower 1



46th Floor-Cityscape



**SESSION SUMMARY
WEDNESDAY
FEBRUARY 20, 2019**



TUESDAY, FEBRUARY 19, 2019

4:30 PM - 6:30 PM

Yosemite Foyer (Ballroom Level)

SRNT Registration

4:30 PM - 6:30 PM

Green Room (Grand Ballroom Level)

Speaker Ready Room

WEDNESDAY, FEBRUARY 20, 2019

7:00 AM - 7:00 PM

Yosemite Foyer (Ballroom Level)

Registration

8:30 AM - 11:30 AM

Pre-Conference Workshops

(Available at an additional fee)

8:30 AM - 11:30 AM

Franciscan C (Ballroom Level)

Pre-Conference Workshop #1

Practical Considerations in Designing and Implementing Web Surveys for Rapid-Response Surveillance

Sponsoring Organization: Office on Smoking and Health, CDC

8:30 AM - 11:30 AM

Franciscan D (Ballroom Level)

Pre-Conference Workshop #2

An Insider's Guide to Conducting Tobacco Control Research and Interventions Among Sexual and Gender Minority Populations: Challenges Met and Unmet

Sponsoring Organization: SRNT Health Disparities Network



8:30 AM - 11:30 AM

Imperial Ballroom A (Ballroom Level)

Pre-Conference Workshop #3

Countering the JUUL Epidemic Among Youth: Regulatory and Educational Strategies

Sponsoring Organization: N/A

8:30 AM - 11:30 AM

Franciscan A (Ballroom Level)

Pre-Conference Workshop #4

Understanding Tobacco Use Trends: Leveraging Harmonized Data from the US Tobacco Use Supplement — Current Population Survey, 1992-2015

Sponsoring Organization: National Cancer Institute, DCCPS, Tobacco Control Research Branch

8:30 AM - 11:30 AM

Plaza A (Lobby Level)

Pre-Conference Workshop #5

Authorship and Grantmanship for Early Career Investigators in Tobacco and Nicotine Research

Sponsoring Organization: SRNT Trainee Network

8:30 AM - 11:30 AM

Plaza B (Lobby Level)

Pre-Conference Workshop #6

Recruiting and Retaining Adolescents in Tobacco Control Research: Challenges and Opportunities

Sponsoring Organization: SRNT Adolescent Network

8:30 AM - 11:30 AM

Imperial Ballroom B (Ballroom Level)

Pre-Conference Workshop #7

An Update to the Basics: Current Approaches for Measuring and Understanding Key Individual Differences and Cessation Outcomes

Sponsoring Organization: SRNT Treatment Research Network



8:30 AM - 11:30 AM

Franciscan B (Ballroom Level)

Pre-Conference Workshop #8

Implementing Precision Medicine in Smoking Cessation: Patients, Providers, Policy, and More

Sponsoring Organization: SRNT Genetics and Omics Network

10:00 AM - 10:15 AM

Yosemite Room (Ballroom Level)

Pre-Conference Workshop Refreshment Break

11:30 AM - 1:00 PM

Lunch Break (on your own)

12:00 PM - 7:00 PM

Green Room (Grand Ballroom Level)

Speaker Ready Room

1:00 PM - 3:15 PM

Network Meetings

1:00 PM - 2:00 PM

Union Square 1 & 2 (Fourth Floor)

Adolescent Network Meeting

1:00 PM - 2:00 PM

Union Square 5 & 6 (Fourth Floor)

Genetics & Omics Network Meeting

1:00 PM - 2:00 PM

Union Square 15 & 16 (Fourth Floor)

Global Research Network Meeting

1:00 PM - 2:00 PM

Plaza Room A (Lobby Level)

Health Disparities Network Meeting



2:15 PM - 3:15 PM

Union Square 14 (Fourth Floor)

Basic Science Network Meeting

2:15 PM - 3:15 PM

Union Square 3 & 4 (Fourth Floor)

Policy Research Network Meeting

2:15 PM - 3:15 PM

Plaza Room B (Lobby Level)

Treatment Research Network Meeting

3:30 PM - 5:15 PM

Imperial Ballroom A (Ballroom Level)

Special Symposium 1

FDA Center for Tobacco Products: An Update on FDA's Comprehensive Plan for Tobacco and Nicotine Regulation

Chair: Mitch Zeller, JD, Director, FDA Center for Tobacco Products

Presenters: Mitch Zeller, JD, Director, FDA Center for Tobacco Products; Matthew R. Holman, PhD, Director, Office of Science, FDA Center for Tobacco Products; Gem Benozza, Supervisory Health Communications Officer, Office of Health Communications and Education, FDA Center for Tobacco Products

Announced by the FDA Commissioner in 2017, the Comprehensive Plan for Tobacco and Nicotine Regulation places nicotine, and the issue of addiction, at the center of the Agency's tobacco regulatory activities. During this SRNT session, Center for Tobacco Products (CTP) speakers will address the multi-year roadmap to better protect youth and help addicted adult smokers quit; significantly reducing tobacco-related disease and death in the U.S. in the years to come. Topics to be covered include Regulatory Policies on Addiction, Appeal, and Cessation; Science-Based Review of Tobacco Products; and the Youth Tobacco Prevention Plan. Regulatory Policies on Addiction, Appeal, and Cessation will address seeking evidence and public comment on potential FDA regulations; increasing access to, and use of, medicinal nicotine products to help people quit; and educating the public and correcting misperceptions about nicotine. Science-Based Review of Tobacco Products will include an update on Modified-Risk Tobacco Product Applications and research to inform FDA's regulatory activities and decisions. Data from CTP funded studies, including the PATH Study, will be presented highlighting recent findings to inform specific regulatory areas. The Youth Tobacco Prevention plan will address three main strategies: 1) preventing youth access, 2) curbing the marketing of products, and 3) educating youth and their families. This session will also address the changes to FDA's tobacco and nicotine policy framework announced in November 2018 that focuses on flavored tobacco products including ENDS products marketed to youth, flavored ENDS products, flavored cigars, and menthol in combustible products, including cigarettes and cigars.



5:15 PM - 5:30 PM

Break

5:30 PM - 6:45 PM

Grand Ballroom B (Grand Ballroom Level)

Presidential Symposium: Tobacco Control for All: Addressing Smoking Disparities for Priority Populations

Session Chair: Marina Picciotto, PhD, Kavli Institute for Neuroscience, Yale University School of Medicine, New Haven, CT, USA

Presenters: Geoffrey Fong, PhD, Professor of Psychology and Public Health and Health Systems, University of Waterloo, Waterloo, Ontario, Canada; Senior Investigator, Ontario Institute for Cancer Research, Toronto, Ontario, Canada; Pebbles Fagan, PhD, MPH, Professor of Health Behavior and Health Education, and Director, Center for the Study of Tobacco, University of Arkansas for Medical Sciences, Little Rock, AK, USA; Monica Webb Hooper, PhD, Professor of Oncology, Psychological Sciences, Family Medicine and Community Health, Case Western Reserve University; Associate Director for Cancer Disparities Research; Director, Office of Cancer Disparities Research, Case Comprehensive Cancer Center, Cleveland, OH, USA; Andrew Waa, MPH, Ngāti Hine/Ngāpuh, Senior Research Fellow in Public Health, Eru Pomare Māori Health Research Centre, University of Otago, Dunedin, New Zealand; Linda Alexander, PhD, Senior Associate Dean for Academic, Student and Faculty Affairs; Professor, Social and Behavioral Sciences, West Virginia University, Morgantown, WV, USA

6:45 PM - 8:00 PM

SRNT CENTRAL, Yosemite Room (Ballroom Level)

Opening Welcome Reception

(All attendees are welcome! Cake, Champagne, and a Cash bar Reception.)



**SESSION SUMMARY
THURSDAY
FEBRUARY 21, 2019**

Thursday, February 21



THURSDAY, FEBRUARY 21, 2019

7:15 AM - 5:00 PM

Yosemite Foyer (Ballroom Level)

Registration

7:15 AM - 5:00 PM

Green Room (Grand Ballroom Level)

Speaker Ready Room

8:30 AM - 9:30 AM

Grand Ballroom B (Grand Ballroom Level)

Welcome: Basic Science Theme Plenary — Nicotine During Adolescence: Mechanisms Leading to Long-Term Changes in Cognition**Session Chair:** Marina Picciotto, PhD**Presenter:** Huib Mansvelter, PhD, Professor of Neurophysiology, Head of Department, Integrative Neurophysiology, Vrije Universiteit Amsterdam, The Netherlands

9:00 AM - 3:00 PM

SRNT CENTRAL, Yosemite Room (Ballroom Level)

Exhibits Open

9:30 AM - 10:00 AM

SRNT CENTRAL, Yosemite Room & Yosemite Foyer (Ballroom Level)

Exhibitor Time**Refreshment Break**

10:00 AM - 11:30 AM

Grand Ballroom B (Grand Ballroom Level)

Podium Presentation 1: Symposium 2**'BACK TO SCHOOL WITH JUUL': UNDERSTANDING EMERGING TRENDS IN VAPORIZED NICOTINE PRODUCTS***Chair:* Maciej Goniewicz*Audience:* PC, CL, PH, PO *

SYM2A: THE RISE OF THE POD MOD: TRENDS IN E-CIGARETTE SALES IN THE UNITED STATES, 2013-2017

Brian King, Doris Gammon, Ellen Coats, Kristy Marynak, Brett Loomis, Todd Rogers*

SYM2B: CHEMICAL CHARACTERIZATION OF 'POD' PRODUCTS

Maciej Goniewicz, Liam-Gavin Dell, Mary Plumbo, Taylor Vanderbush, Noel Leigh*



SYM2C: EXPOSURE TO JUUL FLAVORS GENERATES REACTIVE OXYGEN SPECIES, POTENTIALLY ELICITING DIFFERENTIAL CYTOTOXIC AND INFLAMMATORY RESPONSES
*Irfan Rahman**, *Thomas Lamb*, *Thivanka Muthumalage*

SYM2D: NICOTINE EXPOSURE AND SIGNS OF ADDICTION IN ADOLESCENTS USING PODS: AN IMPERATIVE FOR CLINICIANS TO ACT NOW!
*Rachel Boykan**, *Catherine Messina*, *Maciej Goniewicz*

SYM2E: ROLE OF A NEW GENERATION ELECTRONIC CIGARETTE ON SMOKING DISPLACEMENT IN SMOKERS WITH SCHIZOPHRENIA: A PROSPECTIVE 3-MONTH FEASIBILITY STUDY

*Pasquale Caponnetto**, *Jennifer DiPiazza*, *Linda Bauld*, *Deborah Robson*, *Marilena Maglia*, *Askin Gulce*, *Kim Jason*, *Christos Paul*, *Riccardo Polosa*

10:00 AM - 11:30 AM

Imperial Ballroom B (Ballroom Level)

Podium Presentation 1: Symposium 3

PAIN, NICOTINE, AND TOBACCO SMOKING: TRANSLATIONAL RESEARCH TO IDENTIFY MECHANISMS AND INFORM THE DEVELOPMENT OF NOVEL INTERVENTIONS

Chair: Emily Zale

Audience: PC, CL, PH

SYM3A: NEUROPATHIC PAIN IMPACTS NICOTINE DEPENDENCE IN MICE

*M. Imad Damaj**, *Yasmin Alkhlaif*

SYM3B: PAIN STATUS AS A PREDICTOR OF SMOKING CESSATION INITIATION, LAPSE, AND RELAPSE

*Lisa LaRowe**, *Joseph Ditre*, *Jessica Powers*, *Bryan Heckman*

SYM3C: A NOVEL INTERVENTION TAILORED FOR SMOKERS WITH CHRONIC PAIN INCREASED MOTIVATION TO QUIT AND SUBSEQUENT CESSATION TREATMENT ENGAGEMENT

*Emily Zale**, *Lisa LaRowe*, *Jesse Kosiba*, *Joseph Ditre*

SYM3D: INTEGRATING GRADED PAIN EXPOSURE INTO STANDARD COGNITIVE BEHAVIORAL THERAPY FOR SMOKING: A PROOF-OF-CONCEPT CASE SERIES

*Andrew Rogers**, *Joseph Ditre*, *Michael Zvolensky*



10:00 AM - 11:30 AM

Imperial Ballroom A (Ballroom Level)

Podium Presentation 1: Symposium 4

POLICY RESEARCH NETWORK SYMPOSIUM: ADVANCING THE TOBACCO ENDGAME

Chair: Joanna Cohen

Audience: PH, PO

SYM4A: THE IMPACT OF EXCLUSIVE USE OF VERY LOW NICOTINE CIGARETTES ON COMPENSATORY SMOKING

Tracy Smith, Eric Donny, Joseph Koopmeiners, Cassidy White, Rachel Denlinger-Apte, Lauren Pacek, Dorothy Hatsukami, Neal Benowitz, Matthew Carpenter*

SYM4B: EVIDENCE AND THE ENDGAME: OPPORTUNITIES AND CHALLENGES

Robert Schwartz, Michael Chaiton*

SYM4C: ASSESSING CANADIAN SMOKERS' SUPPORT FOR TOBACCO ENDGAME MEASURES: A CASE STUDY OF ITC RESEARCH AND DISSEMINATION TO ADVANCE ENDGAME POLICIES IN CANADA

Geoffrey Fong, Janet Chung Hall, Pete Driezen, Lorraine Craig*

SYM4D: EMERGING LESSONS FROM COUNTRIES WITH TOBACCO ENDGAME GOALS. FINDINGS FROM THE INSPIRED PROJECT

Richard Edwards, Louise Thornley, Robert Schwartz, Mervi Hara, David Evans, Sheila Duffy, Hans Gilljam*

SYM4E: CAN FINLAND ACHIEVE THE GOAL OF ITS TOBACCO ENDGAME WITH EFFECTIVE BUT CONVENTIONAL MEASURES

David Timberlake, Ulla Laitinen, Jaana Kinnunen, Arja Rimpela*

10:00 AM - 11:30 AM

Plaza A (Lobby Level)

Podium Presentation 1: Symposium 5

ADVANCES IN SMARTPHONE AND SMARTWATCH APPLICATIONS FOR CESSATION

Chair: Jonathan Bricker

Audience: CL

SYM5A: DESIGN OF THE ICANQUIT APP FOR SMOKING CESSATION AND UPDATE ON ITS EVALUATION IN A LARGE US RANDOMIZED CONTROLLED TRIAL

Jonathan Bricker, Noreen Watson, Kristin Mull, Jaimee Heffner*

SYM5B: DOES A GROWTH MINDSET INTERVENTION ENHANCE ENGAGEMENT AND EFFECTIVENESS OF A SMARTPHONE APP FOR SMOKING CESSATION? A PILOT RANDOMIZED CONTROLLED TRIAL

Vasundhara Sridharan, Yuichi Shoda, Jaimee Heffner, Jonathan Bricker*

Thursday



SYM5C: RANDOMIZED CLINICAL TRIAL OF AN AUTOMATED SMARTPHONE BASED SMOKING CESSATION TREATMENT

Michael Businelle, Emily Hebert, Darla Kendzor, Damon Vidrine*

SYM5D: SCAMPI: A WECHAT-BASED APP TO SUPPORT CHINESE MEN TO QUIT SMOKING

Chen Jinsong, Elsie Ho*

SYM5E: RANDOMIZED CLINICAL TRIAL OF A JUST IN TIME INTERVENTION BASED ON WEARABLE BIOSENSORS DETECTING SMOKING GESTURES

Sherry McKee, Abhinav Parate, Akshaya Shanmugam, Deepak Ganesan*

10:00 AM - 11:30 AM

Franciscan CD (Ballroom Level)

Podium Presentation 1: Paper Session 1

NICOTINIC REINFORCEMENT: NEW EVIDENCE FROM BASIC SCIENCE

Chair: Brandon Henderson

Audience: PC

PA1-1: THE MEDIAL PREFRONTAL CORTEX SUPPORTS THE REINFORCING EFFECTS OF NICOTINE

Zheng-Ming Ding, Cynthia Ingraham, William McBride*

PA1-2: ACUTE AND CHRONIC MEMANTINE HAVE OPPOSITE EFFECTS ON NICOTINE SELF ADMINISTRATION IN RATS

Edward Levin, Corinne Wells, Leah Yao, Wendi Guo, Anica Nangia, Sarah Howard, Erica Pippen, Andrew Hawkey, Jed Rose, Amir Rezvani*

PA1-3: THE IMPACTS OF ACTUAL AND PERCEIVED NICOTINE ADMINISTRATION ON RESTING STATE FUNCTIONAL CONNECTIVITY BETWEEN THE INSULA AND THE ANTERIOR CINGULATE CORTEX IN SMOKERS

*Robin Perry, Hera Schlagintweit, Sean Barrett**

PA1-4: DEVELOPMENT OF A RHESUS MACAQUE MODEL FOR NICOTINE SELF ADMINISTRATION VIA INHALATION

Matthew Ford, David Jacobs, Thomas Mitchell, Michael Davies, Kathleen Grant, Eliot Spindel*

PA1-5: AN ASSESSMENT OF THE THRESHOLD REINFORCING DOSE OF NICOTINE IN A RAT MODEL OF DEPRESSION

John Smethells, Paul Pentel, Mark LeSage*



10:00 AM - 11:30 AM

Franciscan AB (Ballroom Level)

Podium Presentation 1: Paper Session 2

GENETIC BASIS OF ADDICTION AND TOBACCO-RELATED DISEASES

Chair: Jill Turner

Chair: Christie Fowler

Audience: PC

PA2-1: INFLUENCE OF TAAR1 GENOTYPE ON ORAL NICOTINE SELF ADMINISTRATION IN MICE

*David Jacobs, Jamie Leitzinger, Matthew Ford**

PA2-2: IDENTIFICATION OF A LOCUS ON CHROMOSOME FOUR MEDIATING NICOTINE WITHDRAWAL DEFICITS IN HIPPOCAMPAL LEARNING

Lisa Goldberg, Munir Kutlu, Dana Zeid, Laurel Seemiller, Thomas Gould*

PA2-3: COLLABORATION WITH 23ANDME TO STUDY THE GENETIC BASIS OF IMPULSIVITY: IMPLICATIONS FOR SMOKING

*Sandra Sanchez-Roige, Pierre Fontanillas, Sarah Elson, 23andMe Research Team, James MacKillop, Abraham Palmer**

PA2-4: PREDILECTION OF CHR5A5 SNP TO SMOKING-RELATED CARDIOTOXICITY USING PATIENT-SPECIFIC IPSCS

Joe Zhang, Tomoya Kitani, Ning Ma, Joseph Wu*

10:00 AM - 11:30 AM

Plaza B (Lobby Level)

Podium Presentation 1: Paper Session 3

SMOKING, CESSATION, AND MENTAL HEALTH

Chair: Andrea Weinberger

Audience: CL, PH *

PA3-1: CAUSAL EFFECTS OF LIFETIME SMOKING ON RISK FOR DEPRESSION AND SCHIZOPHRENIA. EVIDENCE FROM A MENDELIAN RANDOMISATION STUDY

Robyn Wootton, Marcus Munafò*

PA3-2: COMORBID DRUG USE DISORDERS AND AFFECTIVE DISORDERS AS VULNERABILITIES TO CURRENT SMOKING

Maria Parker, Andrea Villanti*

PA3-3: SMOKING CHARACTERISTICS, HARM REDUCTION BEHAVIOURS AND ATTEMPTS TO QUIT SMOKING IN SMOKERS WITH SEVERE MENTAL DISTRESS

Leonie Brose, Jamie Brown, Robert West, Ann McNeill*

Thursday



PA3-4: THE EFFECTS OF VARENICLINE, BUPROPION, NICOTINE PATCH, AND PLACEBO ON CESSATION AMONG SMOKERS WITH CURRENT AND PAST MAJOR DEPRESSION

George Kypriotakis, David Lawrence, Charles Green, Robert Anthenelli, Chad Morris, Larry Samuels, Paul Cinciripini*

PA3-5: BARRIERS AND SUPPORTS FOR SMOKING CESSATION AMONG LATINOS IN SUBSTANCE USE DISORDER TREATMENT

Anna Pagano, Juan Cano, Jorge Hernandez, Anna Balassone, Juliet Lee*

PA3-6: SERIOUS MENTAL ILLNESS AND CESSATION TREATMENT UTILIZATION: THE MEDIATING ROLE OF HEALTHCARE PROVIDER INTERACTIONS

Patrick Hammett, Harry Lando, Brent Taylor, Rachel Widome, Darin Erickson, Steven Fu*

11:30 AM - 1:00 PM

Grand Ballroom A (Grand Ballroom Level)

Poster Session 1: Policy/Pre-Clinical

11:30 AM - 1:00 PM

SRNT CENTRAL, Yosemite Room (Ballroom Level)

Lunch Break

Boxed lunches will be distributed starting at 11:15 a.m.

Plan to attend Poster Session 1 while eating your boxed lunch!

1:00 PM - 1:30 PM

Grand Ballroom B (Grand Ballroom Level)

Policy Keynote Plenary and Recipient of the 2019 Jarvik Russell Award

The Intersections Between Social Determinants of Health, Tobacco Marketing, Tobacco Control, and Tobacco Use

Presenter: Kelvin Choi, PhD, MPH, National Institute on Minority Health and Health Disparities (NIMHD) at the National Institutes of Health (NIH), Division of Intramural Research, Bethesda, Maryland

Session Chair: Monica Webb Hooper, PhD

1:30 PM - 2:30 PM

Grand Ballroom B (Grand Ballroom Level)

Public Health Keynote Plenary

Tobacco Use and the Science of Minority Health and Health Disparities

Presenter: Eliseo J. Pérez-Stable, MD, Director of the National Institute on Minority Health and Health Disparities (NIMHD) at the National Institutes of Health (NIH), Bethesda, Maryland

Session Chair: Andrea Villanti, PhD, MPH



2:30 PM - 3:00 PM

SRNT CENTRAL, Yosemite Room & Yosemite Foyer (Ballroom Level)

Exhibitor Time

Refreshment Break

3:00 PM - 4:30 PM

Plaza B (Lobby Level)

Podium Presentation 2: Symposium 6

MULTIPLE ROLES FOR NICOTINE IN REINFORCEMENT AND ADDICTION

Chair: Matthew Palmatier

Audience: PC, CL

SYM6A: NICOTINE INCREASES SIGN TRACKING BUT NOT GOAL TRACKING: EFFECTS ON SUBSEQUENT REWARD SEEKING

Matthew Palmatier, Chloe Majors, Amanda Smith*

SYM6B: REINFORCEMENT ENHANCEMENT BY NICOTINE IN ADULT RATS: PHARMACOLOGICAL AND BEHAVIOURAL ASPECTS

Paul Clarke, Annie Constantin, Jennifer Wright, Suelyn Ren, Tsz Man Vanessa Chan, Doran Satanove*

SYM6C: EXTENDING THE REINFORCEMENT-ENHANCING EFFECTS OF NICOTINE TO ALCOHOL REINFORCEMENT THROUGH BEHAVIORAL ECONOMICS

Scott Barrett, Brady Thompson, Jessica Emory, David Kwan, Chris Larson, Rick Bevins*

SYM6D: NICOTINE ENHANCES THE REINFORCING EFFECTS OF NON-DRUG REWARDS IN HUMANS

Kenneth Perkins, Joshua Karelitz*

3:00 PM - 4:30 PM

Imperial Ballroom B (Ballroom Level)

Podium Presentation 2: Symposium 7

LEVERAGING EPIDEMIOLOGICAL, ECOLOGICAL, AND CLINICAL DATA TO IMPROVE SMOKING CESSATION RATES AMONG HEAVY DRINKING SMOKERS

Chair: Sarah Dermody

*Audience: PH, CL **

SYM7A: RELATIONSHIPS BETWEEN PROBLEMATIC ALCOHOL USE AND CIGARETTE SMOKING AMONG INDIVIDUALS IN THE UNITED STATES: EPIDEMIOLOGICAL INVESTIGATIONS

Andrea Weinberger, Renee Goodwin*

Thursday



SYM7B: THE TIME-VARYING EFFECT OF ALCOHOL USE ON CIGARETTE SMOKING RELAPSE RISK

Sarah Dermody, Saul Shiffman*

SYM7C: SMOKING CESSATION OUTCOMES FOR HEAVY DRINKING SMOKERS USING VARENICLINE, NICOTINE PATCH, OR COMBINATION NICOTINE REPLACEMENT THERAPY
Jesse Kaye, Megan Piper, Timothy Baker, Jessica Cook*

SYM7D: THE RELATIVE IMPACT OF ALCOHOL, SUBSTANCE, AND COMORBID USE DISORDERS ON SMOKING CESSATION SUCCESS AND RELATED CONSTRUCTS
Adrienne Johnson, Timothy Baker, Megan Piper*

SYM7E: EARLY PREDICTORS OF RESPONSE TO VARENICLINE IN INDIVIDUALS WITH ALCOHOL USE DISORDERS AND CO-MORBID SMOKING
Lisa Fucito, Ran Wu, Stephanie O'Malley, Krysten Bold, Allen Zweben, Ralitza Gueorguieva*

SYM7F: LONGITUDINAL FINDINGS FROM A RANDOMIZED CLINICAL TRIAL OF VARENICLINE FOR ALCOHOL USE DISORDER WITH COMORBID CIGARETTE SMOKING
Krysten Bold, Allen Zweben, Lisa Fucito, Mary Piepmeier, Srinivas Muvvala, Ran Wu, Ralitza Gueorguieva, Stephanie O'Malley*

3:00 PM - 4:30 PM

Plaza A (Lobby Level)

Podium Presentation 2: Symposium 8

EXAMINING AND ADDRESSING COMMUNICATION INEQUALITIES IN TOBACCO CONTROL

Chair: Andy Tan

*Audience: PH, PO **

SYM8A: CONCEPTUAL FRAMEWORK OF COMMUNICATION INEQUALITIES IN TOBACCO CONTROL RESEARCH AND PRACTICES

*Andy Tan**

SYM8B: DISPARITIES IN THE APPEAL OF CIGARETTE ADVERTISING FEATURES BY RACE, SOCIOECONOMIC STATUS AND SEXUAL ORIENTATION

*Meghan Moran**

SYM8C: REACTIONS TO TWO RECENT NATIONAL ANTI-SMOKING MESSAGES AMONG LOWER-SOCIOECONOMIC HISPANIC, NON-HISPANIC BLACK, AND NON-HISPANIC WHITE YOUNG ADULT SMOKERS

*Kelvin Choi**

SYM8D: HOW TO DESIGN AND DELIVER MASS MEDIA CAMPAIGNS TO AVOID COMMUNICATION INEQUALITIES IN TOBACCO CONTROL: EVIDENCE FROM AUSTRALIA

*Emily Brennan**

SYM8E: ASSESSING THE HEALTH EQUITY IMPACT OF CIGARETTE WARNING POLICIES: RESULTS FROM LONGITUDINAL STUDIES OF ADULT SMOKERS IN CANADA AND MEXICO

*James Thrasher**



3:00 PM - 4:30 PM

Grand Ballroom B (Grand Ballroom Level)

Podium Presentation 2: Symposium 9

THE HEAT IS ON: STATE OF THE SCIENCE ON HEATED TOBACCO PRODUCTS AND CONSIDERATIONS FOR FUTURE RESEARCH

Chair: Maciej Goniewicz

Audience: PH, PO

SYM9A: BELIEFS ABOUT THE RELATIVE HARMFULNESS OF HEATED TOBACCO PRODUCTS AND E-CIGARETTES VS. CIGARETTES: FINDINGS FROM ITC PROJECT SURVEYS IN JAPAN AND 21 OTHER ITC COUNTRIES

Geoffrey Fong, Mi Yan, Itsuro Yoshimi, Yumiko Mochizuki-Kobayashi, Shannon Gravely, Janine Ouimet, Anne Quah, Tara Elton-Marshall*

SYM9B: AWARENESS, INTEREST, AND USE OF IQOS AMONG YOUTH IN CANADA, USA, AND ENGLAND

David Hammond, Christine Czoli, Jessica Reid, Richard O'Connor, Maciej Goniewicz*

SYM9C: NICOTINE AND TOXICANTS IN EMERGING HEAT-NOT-BURN TOBACCO PRODUCTS: A CROSS-COUNTRY STUDY

Maciej Goniewicz, Denisha Robinson, Richard O'Connor, Noel Leigh*

SYM9D: CHARACTERIZING MAINSTREAM AND SIDESTREAM VOLATILE EMISSIONS FROM HEAT-NOT-BURN PRODUCTS

Hugo Destallats, Lucia Cancelada, Mohamad Sleiman, Xiaochen Tang, Marion Russell, V. Nahuel Montesinos, Marta Litter, Lara Gundel*

SYM9E: THE EFFECTS OF IN VIVO EXPOSURE TO EMISSIONS FROM HEAT-NOT-BURN PRODUCT, E-CIGARETTE AEROSOLS AND TOBACCO SMOKE ON PULMONARY INFLAMMATION AND DAMAGE

Yasmin Thanavala, Tariq Bhat, Suresh Kalathil, Noel Leigh, Maciej Goniewicz*

3:00 PM - 4:30 PM

Franciscan AB (Ballroom Level)

Podium Presentation 2: Paper Session 4

PULMONARY TOXICITY OF ELECTRONIC CIGARETTES AND COMBUSTIBLE CIGARETTES

Chair: Heather Kimmel

Audience: PC

PA4-1: E-CIGARETTE USE CAUSES ENHANCED LUNG PROTEASE LEVELS

Arunava Ghosh, Raymond Coakley, Eric Davis, Andrew Ghio, Marianne Muhlebach, Charles Esther, Neil Alexis, Robert Tarran*



PA4-2: FLAVOR SOLVENT ADDUCTS IN ELECTRONIC CIGARETTE LIQUIDS ARE MODULATORS OF RESPIRATORY IRRITANT RECEPTORS AND CYTOTOXIC TO HUMAN LUNG EPITHELIAL CELLS

*Sairam Jabba**, Ana Caceres, Hanno Erythropel, Julie Zimmerman, Sven-Eric Jordt

PA4-3: EVALUATION OF CELLULAR PROLIFERATION AND MUCUS PRODUCTION IN THE MURINE LARYNX FOLLOWING SHORT TERM WHOLE BODY CIGARETTE SMOKE EXPOSURE

*Meena Easwaran**, Joshua Martinez, Daniel Ramirez, Elizabeth Erickson DiRenzo

PA4-4: ASSOCIATION OF ELECTRONIC CIGARETTES USE WITH WHEEZING AND OTHER RESPIRATORY SYMPTOMS IN ADULTS: RESULTS FROM THE POPULATION ASSESSMENT OF TOBACCO AND HEALTH (PATH) STUDY, WAVE 2

*Dongmei Li**, Isaac Sundar, Scott McIntosh, Deborah Ossip, Maciej Goniewicz, Richard O'Connor, Irfan Rahman

PA4-5: EXPOSURE TO ELECTRONIC CIGARETTE AEROSOL INCREASES CISPLATIN RESISTANCE IN PHARYNGEAL CANCER CELLS

Jimmy Manyanga, Célia Bouharati, Balaji Sadhasivam, Vengatesh Ganapathy, Lurdes Queimado*

3:00 PM - 4:30 PM

Franciscan CD (Ballroom Level)

Podium Presentation 2: Paper Session 5

ASSESSING THE PROMISE OF NOVEL PHARMACOLOGIC AND NEUROSTIMULATOR THERAPIES

Chair: Rebecca Ashare

Audience: CL

PA5-1: PSYCHEDELIC (5-HT_{2A}R AGONIST) PSILOCYBIN-FACILITATED SMOKING CESSATION: COMPARATIVE EFFICACY VS. NRT

*Matthew Johnson**, Albert Garcia-Romeu, Michael McKenna, John Fedota, Elliot Stein, Roland Griffiths

PA5-2: EXOGENOUS PROGESTERONE FOR SMOKING CESSATION IN MEN AND WOMEN; A DOUBLE-BLIND, PLACEBO-CONTROLLED RANDOMIZED TRIAL

Nicole Tosun, Ann Fieberg, Lynn Eberly, Katherine Harrison, Angela Tipp, Alicia Allen, Sharon Allen*

PA5-3: LACK OF EFFECT OF TRANSCRANIAL DIRECT CURRENT STIMULATION ON SHORT TERM SMOKING CESSATION

*Mary Falcone**, Leah Bernardo, E. Paul Wileyto, Cheyenne Allenby, Anne Marie Burke, Roy Hamilton, Mario Cristancho, Rebecca Ashare, James Loughhead, Caryn Lerman



PA5-4: THE IMPACT OF GENDER, OVARIAN HORMONES AND OXYTOCIN ON STRESS REACTIVITY, CIGARETTE CRAVING, AND SMOKING IN A LABORATORY RELAPSE PARADIGM

Erin McClure, Nathaniel Baker, Kevin Gray, Rachel Tomko, Caitlyn Hood, Matthew Carpenter, Viswanathan Ramakrishnan, Cole Buchanan, Michael Saladin*

PA5-5: SOCIOEMOTIONAL PROCESSING TRAITS MODERATE THE ACUTE EFFECTS OF INTRANASAL OXYTOCIN ON SMOKING WITHDRAWAL

Ana Hilleboe, Claudia Aguirre, Adam Leventhal, Lara Ray, Raina Pang, Matt Kirkpatrick*

3:00 PM - 4:30 PM

Imperial Ballroom A (Ballroom Level)

Podium Presentation 2: Paper Session 6

NUANCES IN NICOTINE REDUCTION

Chair: Lauren Pacek

Audience: CL, PH, PO

PA6-1: EVALUATING HETEROGENEITY IN THE EFFECT OF REDUCED NICOTINE CONTENT CIGARETTES

Joseph Koopmeiners, Chuyu Deng, David Vock, Eric Donny, Dorothy Hatsukami*

PA6-2: DO NON-DAILY SMOKERS COMPENSATE FOR REDUCED CIGARETTE CONSUMPTION WHEN SMOKING VERY-LOW-NICOTINE-CONTENT CIGARETTES?

Saul Shiffman, Jason Mao, Brenda Kurland, Sarah Scholl*

PA6-3: CLINICAL OUTCOMES FROM A RANDOMIZED TRIAL TO COMPARE REDUCING NICOTINE WITH VERY LOW NICOTINE CONTENT CIGARETTES VERSUS REDUCING NUMBER OF CIGARETTES PER DAY

Elias Klempner, John Hughes, Peter Callas*

PA6-4: THE EFFECTS OF MENTHOL FLAVORING ON SMOKING BEHAVIOR AND BIOMARKERS OF EXPOSURE IN SMOKERS USING VERY LOW NICOTINE CONTENT CIGARETTES FOR 20 WEEKS

Rachel Denlinger-Apte, Michael Kotlyar, Joseph Koopmeiners, Jennifer Tidey, Xianghua Luo, Joni Jensen, Ryan Vandrey, Eric Donny, Dorothy Hatsukami*

PA6-5: HOW TO INTRODUCE NICOTINE REDUCTION TO THE PUBLIC WITHOUT CAUSING MISPERCEPTIONS: EFFECTS OF NICOTINE CONTENT DESCRIPTIONS ON PERCEIVED NICOTINE QUANTITY, ADDICTIVENESS, AND RISK

M. Justin Byron, Marissa Hall*

PA6-6: QUIT RATES AMONG SMOKERS WITH MOOD AND ANXIETY DISORDERS PARTICIPATING IN A RANDOMIZED CONTROLLED TRIAL OF REDUCED NICOTINE CONTENT CIGARETTES

Susan Veldheer, Jason Liao, Nicolle Krebs, Courtney Lester, Shari Hrabovsky, Sophia Allen, Ahmad Hameed, Junjia Zhu, Emily Wasserman, Gladys Pachas, Corinne Cather, John Richie, Joshua Muscat, A. Eden Evins, Jonathan Foulds*



SRNT SRNT 2019 • SAN FRANCISCO, CALIFORNIA

4:30 PM - 6:00 PM

Grand Ballroom A (Grand Ballroom Level)

Poster Session 2: Public Health (Session 1)

6:00 PM - 7:00 PM

Union Square Foyer (Fourth Floor)

Trainee Network Mentoring Roundtables

(Check in at the Registration Table located on the Fourth Floor.)

7:00 PM - 8:30 PM

Cityscape (46th Floor)

Trainee Network Mixer



**SESSION SUMMARY
FRIDAY
FEBRUARY 22, 2019**



FRIDAY, FEBRUARY 22, 2019

7:15 AM - 5:00 PM

Yosemite Foyer (Ballroom Level)

Registration

7:30 AM - 5:00 PM

Green Room (Grand Ballroom Level)

Speaker Ready Room

7:30 AM - 8:15 AM

Imperial Ballroom A (Ballroom Level)

SRNT Members Meeting

(All members are welcome to attend)

8:15 AM - 8:30 AM

Break

8:30 AM - 10:00 AM

Franciscan CD (Ballroom Level)

Podium Presentation 3: Symposium 10

TRANSLATING FROM BRAIN MECHANISMS OF INHIBITORY CONTROL TO TREATMENT DEVELOPMENT FOR SMOKING CESSATION

Chair: Brett Froeliger

Audience: PC

SYM10A: ABERRANT PREFRONTAL PLASTICITY AND NICOTINE WITHDRAWAL-INDUCED COGNITIVE DEFICITS

Robert Cole, Pavel Ortinski, Jill Turner*

SYM10B: INVESTIGATING THE NEURAL BASIS OF NICOTINE WITHDRAWAL-INDUCED ATTENTIONAL DEFICITS

*Jared Young**

SYM10C: DISSOCIABLE EFFECTS OF THETA BURST TRANSCRANIAL MAGNETIC STIMULATION ON INHIBITORY CONTROL IN SMOKERS.

*Brett Froeliger**

SYM10D: NEURAL CUE REACTIVITY DURING ACUTE WITHDRAWAL PREDICTS SHORT TERM SMOKING RELAPSE

Cheyenne Allenby, Mary Falcone, E. Paul Wileyto, Wen Cao, Leah Bernardo, Rebecca Ashare, Amy Janes, James Loughhead, Caryn Lerman*



8:30 AM - 10:00 AM

Franciscan AB (Ballroom Level)

Podium Presentation 3: Symposium 11

UNDERSTANDING SMOKING IN PATIENTS WITH CANCER: FROM PREVALENCE TO A PLACEBO-CONTROLLED TRIAL

Chair: Kristen McCarter

Audience: CL, PH *

SYM11A: SMOKING RATES DURING AND AFTER TREATMENT FOR HEAD AND NECK CANCER

*Kristen McCarter**, Amanda L. Baker, Ben Britton, Gregory Carter, Christopher Wratten, Judith Bauer, Alison Beck, Erin Forbes

SYM11B: DOES SMOKING ABSTINENCE PREDICT CANCER PATIENTS' QUALITY OF LIFE OVER TIME?

*Úrsula Martínez**, Karen O. Brandon, Steven K. Sutton, Thomas H. Brandon, Vani N. Simmons

SYM11C: A CLOSER LOOK AT THE INTERSECTION OF INTENTION, CONFIDENCE, AND ATTEMPTS TO QUIT AFTER A TOBACCO-RELATED CANCER DIAGNOSIS: RESULTS FROM A DAILY ASSESSMENT STUDY

*Jessica L. Burris**, Jessica N. Rivera-Rivera, Matthew J. Carpenter, K. Michael Cummings, Jamie S. Ostroff, Gregory T. Smith, Jamie L. Studts

SYM11D: A PLACEBO-CONTROLLED RANDOMIZED CLINICAL TRIAL OF 24-WEEKS OF VARENICLINE TO TREAT NICOTINE DEPENDENCE AMONG CANCER PATIENTS: CESSATION AND SAFETY OUTCOMES AND THE IMPORTANCE OF MEDICATION ADHERENCE

*Brian Hitsman**, Frank Leone, Jessica Weisbrot, Anna Hitsman Veluz-Wilkins, Andrew Miele, Anita Hole, Nancy C. Jao, E. Paul Wileyto, Allison J. Carroll, Ravi Kalhan, Jyoti Patel, Corey Langer, Robert Schnoll

SYM11E: RESULTS FROM A RANDOMIZED CONTROLLED COMPARATIVE EFFECTIVENESS TRIAL OF TOBACCO TREATMENT IN CANCER CARE

*Jamie S. Ostroff**, Elyse Park, Giselle Perez, Sue Regan, Alona Muzikankasy, Nancy Rigotti, Doug Levy, Jennifer Temel, Mary Cooley, Anne Partridge

8:30 AM - 10:00 AM

Imperial Ballroom B (Ballroom Level)

Podium Presentation 3: Symposium 12

MEASUREMENT OF ENDS EXPOSURE

Chair: Kevin Walton

Audience: CL, PH

SYM12A: ANALYTICAL CHALLENGES ASSOCIATED WITH ELECTRONIC CIGARETTES

*Joseph Lisko**, Steve Pappas, Brian Hearn, Clifford Watson, Liza Valentin-Blasini



SYM12B: A NEW APPROACH TO ASSESS YIELD DELIVERED TO THE MOUTH OF ENDS USERS BASED ON PRODUCT EMISSIONS AND NATURAL ENVIRONMENT TOPOGRAPHY
Risa Robinson, Edward Hensel*

SYM12C: NICOTINE CLINICAL PHARMACOLOGY STUDIES IN THE ASSESSMENT OF ELECTRONIC NICOTINE DELIVERY DEVICES (ENDS)
Neal Benowitz, Gideon St. Helen, Natalie Nardone, Arit Harvanko, Maciej Goniewicz*

SYM12D: BIOMARKERS OF EXPOSURE: EFFECTS OF INSTRUCTIONS FOR ELECTRONIC CIGARETTE USE
Dorothy Hatsukami, Ellen Meier, Bruce Lindgren, Richard O'Connor, Peter Shields*

SYM12E: BIOMARKERS OF EXPOSURE AMONG DUAL USERS OF TOBACCO CIGARETTES AND ECIGARETTES FINDINGS FROM WAVE ONE OF THE POPULATION ASSESSMENT OF TOBACCO AND HEALTH STUDY
Danielle Smith, Carol Christensen, Dana van Bommel, Nicolette Borek, Bridget Ambrose, Gladys Ervies, Karen Konkel, Raymond Niaura, Katy Edwards, Cassandra Stanton, Ben Blount, Lanqing Wang, Jun Feng, Kathy Caldwell, Dorothy Hatsukami, Stephen Hecht, Heather Kimmel, Elizabeth Lambert, Mark Travers, Andrew Hyland, Maciej Goniewicz*

8:30 AM - 10:00 AM

Grand Ballroom B (Grand Ballroom Level)

Podium Presentation 3: Symposium 13

EVALUATING THE EFFECT OF MENTHOL FLAVOR ON NICOTINE USE, REINFORCEMENT, AND CESSATION: FINDINGS FROM PRECLINICAL, EXPERIMENTAL, AND EPIDEMIOLOGICAL STUDIES

Chair: Krysten Bold

Chair: Neal Benowitz

Audience: PC, CL, PH, PO

SYM13A: MENTHOL AND OTHER TOBACCO FLAVORANTS ENHANCE NICOTINE REWARD THROUGH CHANGES IN MIDBRAIN DOPAMINE AND GABA NEURONS
Brandon Henderson, Alicia Avelar, Austin Akers, Skylar Cooper*

SYM13B: INFLUENCE OF MENTHOL AND GREEN-APPLE E-LIQUID FLAVORS IN YOUTH E-CIGARETTE USERS
Asti Jackson, Harmanpreet Bhatti, Ralitza Gueorguieva, Eugenia Buta, Barry Green, Stephanie O'Malley, Suchitra Krishnan-Sarin*

SYM13C: EVALUATING THE EFFECT OF SWITCHING TO NON-MENTHOL CIGARETTES AMONG CURRENT MENTHOL SMOKERS
Krysten Bold, Suchitra Krishnan-Sarin, Lisa Fucito, Haleh Nadim, Sera-Maren Wiechert, Annabel Burnley, Tore Eid, Peter Jatlow, Stephanie O'Malley*

SYM13D: THE IMPACT OF ONTARIO'S BAN OF MENTHOL CIGARETTES ON SMOKING BEHAVIOUR AFTER 1 YEAR: A COHORT STUDY
Michael Chaiton, Robert Schwartz, Joanna Cohen, Eric Soule, Bo Zhang, Thomas Eissenberg*



8:30 AM - 10:00 AM

Plaza B (Lobby Level)

Podium Presentation 3: Paper Session 7

HEALTH WARNINGS: HISTORY AND HOW THEY WORK

Chair: Jennifer Cantrell

Audience: CL, PH, PO

PA7-1: EXPLAINING WHY CIGARETTE PACK MESSAGES ABOUT TOXIC CHEMICALS INCREASE FORGOING CIGARETTES: APPLYING THE TOBACCO WARNINGS MODEL

Michelle Jeong, Marissa Hall, Dongyu Zhang, Jennifer Mendel, Seth Noar, Kurt Ribisl, Noel Brewer*

PA7-2: TESTING MESSAGES COMMUNICATING ABOUT NICOTINE AND COMPARATIVE RISK OF ELECTRONIC AND COMBUSTED CIGARETTES

Bo Yang, Lucy Popova*

PA7-3: EFFECTS OF PLAIN PACKAGING AND GRAPHIC HEALTH WARNING LABELS ON COMBUSTIBLE CIGARETTE USE, RISK PERCEPTIONS, AND HARM EXPOSURE: RESULTS FROM A RANDOMIZED TRIAL

*Melissa Mercincavage, Benjamin Albelda, Valentina Souprountchouk, Andrew Strasser**

PA7-4: ASSUMPTION OF RISK AND THE ROLE OF HEALTH WARNINGS LABELS IN THE UNITED STATES

Michael Cummings, Jonathan Gdanski, Nichole Veatch, Ernesto Sebrie*

PA7-5: THE EFFECT OF GRAPHIC WARNING LABELS ON THE SENSITIVITY TO CIGARETTES PACK PRICES

Matthew Stone, Claudiu Dimofte, Adriana Villaseñor, John Pierce, David Strong*

8:30 AM - 10:00 AM

Plaza A (Lobby Level)

Podium Presentation 3: Paper Session 8

IMPACT OF TOBACCO CONTROL POLICIES ON BEHAVIOR

Chair: Nancy Fleischer

Audience: PH, PO

PA8-1: IMPACT OF LARGE AND SUSTAINED RECENT INCREASES IN TOBACCO TAXES ON AUSTRALIAN SMOKING PREVALENCE

Anna Wilkinson, Michelle Scollo, Melanie Wakefield, Matthew Spittal, Frank Chaloupka, Sarah Durkin*

PA8-2: INVESTIGATING SWITCHING BETWEEN TOBACCO PRODUCTS IN RELATION TO IMPLEMENTATION OF PLAIN PACKAGING LEGISLATION IN THE UNITED KINGDOM

Ilze Bogdanovica, Magdalena Opazo Breton, John Britton*



PA8-3: CHANGES IN MENTHOL AND NONMENTHOL CIGARETTE SALES IN ONTARIO AFTER THE 2017 MENTHOL SALES RESTRICTION

*Elizabeth Brown**, Doris Gammon, Todd Rogers, Lindsay Olson, Ashley Ross, Martha Engstrom

PA8-4: IMPACT OF THE 'STOPTOBER' SMOKING CESSATION CAMPAIGN IN ENGLAND FROM 2012 TO 2017: A QUASI-EXPERIMENTAL REPEAT CROSS-SECTIONAL STUDY

*Mirte Kuipers**, Robert West, Blaise Connolly, Emma Beard, Jamie Brown

PA8-5: DO LOCAL TOBACCO-21 LAWS REDUCE SMOKING AMONG 18 TO 20 YEAR-OLDS?

*Abigail Friedman**, Rachel Wu

8:30 AM - 10:00 AM

Imperial Ballroom A (Ballroom Level)

Podium Presentation 3: Paper Session 9

ASSOCIATION OF E-CIGARETTE USE WITH SMOKING AND CESSATION

Chair: Bryan Heckman

Audience: PO, PH, CL

PA9-1: THE EFFECTIVENESS AND SAFETY OF COMBINING NICOTINE PATCHES WITH E-CIGARETTES (WITH AND WITHOUT NICOTINE) AND BEHAVIORAL SUPPORT, ON SMOKING ABSTINENCE: FINDINGS FROM A LARGE RANDOMISED TRIAL

*Natalie Walker**, Marjolein Verbiest, George Laking, Murray Laugesen, Varsha Parag, Christopher Bullen

PA9-2: A RANDOMIZED PLACEBO-CONTROLLED TRIAL OF THE EFFECTS OF ELECTRONIC CIGARETTES IN CIGARETTE SMOKERS: CIGARETTE SMOKING AND CARBON MONOXIDE

*Caroline Cobb**, Jonathan Foulds, Miao-Shan Yen, Susan Veldheer, Phoebe Brosnan, Jessica Yingst, Christopher Bullen, Thomas Eissenberg

PA9-3: PREVALENCE AND CORRELATES OF SWITCHING TO EXCLUSIVE E-CIGARETTE USE AMONG DAILY SMOKERS: FINDINGS FROM THE POPULATION ASSESSMENT OF TOBACCO AND HEALTH (PATH) STUDY

*Daniel Giovenco**, Torra Spillane, Sabeeh Baig

PA9-4: IS THE USE OF E-CIGARETTES ASSOCIATED WITH RELAPSE TO SMOKING?

*Julia Bowen, Leonie Brose**

PA9-5: CONFLICTING E-CIGARETTE RECOMMENDATIONS INCREASE CYNICAL BELIEFS IN CURRENT AND FORMER SMOKERS: EVIDENCE FROM A RANDOMIZED CONTROL TRIAL

*Natalie Herbert**, Sijia Yang, Qinghua Yang, Julia Alber, Yotam Ophir, Joseph Cappella



9:30 AM - 3:00 PM

SRNT CENTRAL, Yosemite Room (Ballroom Level)

Exhibits Open

10:00 AM - 10:30 AM

SRNT CENTRAL, Yosemite Room & Yosemite Foyer (Ballroom Level)

Exhibitor Time

Refreshment Break

10:30 AM - 11:30 AM

Rapid Response Paper Sessions (Titles and abstracts for these sessions are available in the Rapid Response Abstract Book.)

Imperial Ballroom A (Ballroom Level)

Examining Tobacco Flavor Packaging and Policy

Session Chair: Andrea Villanti, PhD, MPH

Plaza A (Lobby Level)

Late-Breaking Research on E-Cigarette Use and Health Effects

Session Chair: Gideon St.Helen, PhD

Grand Ballroom B (Grand Ballroom Level)

Evaluating Tobacco Control Communication Efforts

Session Chair: Megan Morean, PhD

Imperial Ballroom B (Ballroom Level)

Using Objective Markers to Tailor Cessation Treatment

Session Chair: Lisa Fucito, PhD

11:30 AM - 1:00 PM

SRNT CENTRAL, Yosemite Room (Ballroom Level)

Lunch Break

Boxed lunches will be distributed starting at 11:15 a.m.

Plan to attend Poster Session 3 while eating your boxed lunch!



11:30 AM - 1:00 PM

Grand Ballroom A (Grand Ballroom Level)

Poster Session 3: Clinical

1:00 PM - 2:30 PM

Grand Ballroom B (Grand Ballroom Level)

Award Session

Clinical Keynote Plenary and Recipient of the 2019 Ove Fernö Award

Precision Therapy for Nicotine Dependence

Session Chairs: Tom Glynn, PhD and Robert Schnoll, PhD

Presenter: Caryn Lerman, PhD, Vice Dean for Strategic Initiatives, Perelman School of Medicine, and John H. Glick, MD, Professor in Cancer Research, Department of Psychiatry, University of Pennsylvania, USA

2:30 PM - 3:00 PM

SRNT CENTRAL, Yosemite Room & Yosemite Foyer (Ballroom Level)

Exhibit Time (Last Day)

Refreshment Break

3:00 PM - 4:30 PM

Franciscan AB (Ballroom Level)

Podium Presentation 4: Symposium 14

FACTORS THAT INFLUENCE CO-ABUSE OF ALCOHOL AND NICOTINE: A PRE-CLINICAL PERSPECTIVE ON COMORBIDITY

Chair: Anna Lee

Audience: PC *

SYM14A: ADOLESCENT SOCIAL STRESS INFLUENCES LATER ETHANOL AND NICOTINE BEHAVIORS AND MICRORNA EXPRESSION

Helen Kamens, Michael Caruso, Sonia Cavigelli*

SYM14B: ADOLESCENT ALCOHOL BINGE DRINKING IN MICE IMPACTS NICOTINE DEPENDENCE LATER IN LIFE

M. Imad Damaj, Rabha Younis*

SYM14C: DIVERSE NICOTINIC ACETYLCHOLINE RECEPTOR REGULATION OF NICOTINE USE AND ETHANOL REINFORCEMENT

Darlene Brunzell, Alexandra Stafford, Kenneth Perkins*

SYM14D: BEHAVIORAL AND MOLECULAR INFLUENCES ON VOLUNTARY CONCURRENT NICOTINE AND ALCOHOL CONSUMPTION IN A NOVEL 3 BOTTLE CHOICE ASSAY IN MICE

Anna Lee, Jillienne Touchette, Janna Moen*



3:00 PM - 4:30 PM

Plaza B (Lobby Level)

Podium Presentation 4: Symposium 15

EFFECTS OF WATERPIPE CONSTITUENTS AND DESIGN ON TOXICITY OF WATER-PIPE TOBACCO SMOKE AND SMOKING BEHAVIORS

Chair: Eva Sharma

Audience: PC, CL

SYM15A: HEALTH WARNING LABELS ON THE WATERPIPE DEVICE ARE EFFECTIVE IN REDUCING SMOKING SATISFACTION, PUFFING BEHAVIOR, AND EXPOSURE TO CO
Wasim Maziak, Ziyad Taleb, Mohammad Kalan, Thomas Eissenberg, James Thrasher, Alan Shihadeh, Taghrid Asfar*

SYM15B: EFFECT OF HEATING METHOD AND WATER BOWL PREPARATION ON MAINSTREAM WATERPIPE TOXICANT YIELDS

Marielle Brinkman, Andreas Teferra, Noura Kassem, Nada Kassem*

SYM15C: THE EFFECT OF WATERPIPE SIZE AND SMOKING REGIMEN ON WTS PHYSICAL PROPERTIES AND TOXICITY

Karen Bernd, Cindy Hauser, Dylan Carmack, Ronnae Mailig, Jenna Reed, Emilie Uffman*

SYM15E: FRAMEWORK TO REPORT TOTAL PARTICULATE MASS AND ALDEHYDE EMISSION CHARACTERISTICS FROM HOOKAH

Edward Hensel, Nathan Eddingsaas, Sean O'Dea, A Gary DiFrancesco, Risa Robinson*

3:00 PM - 4:30 PM

Plaza A (Lobby Level)

Podium Presentation 4: Symposium 16

APPLICATION OF BIOMARKERS FOR RISK ASSESSMENT AND INTERVENTIONS IN VULNERABLE POPULATIONS

Chair: Irina Stepanov

Chair: Mirjana Djordjevic

Audience: PH, CL *

SYM16A: URINARY BIOMARKERS OF TOBACCO CONSTITUENT UPTAKE AND METABOLISM AS TOOLS TO INVESTIGATE THE ETHNIC/RACIAL DIFFERENCES IN LUNG CANCER RISK AMONG SMOKERS

Sharon Murphy, Sungshim Park, Daniel Stram, Loic Le Marchand, Stephen Hecht*

SYM16B: DIFFERENCES IN EXPOSURE TO TOXIC AND CARCINOGENIC VOLATILE ORGANIC COMPOUNDS BETWEEN BLACK AND WHITE CIGARETTE SMOKERS

Gideon St.Helen, Neal Benowitz, Jennifer Ko, Peyton Jacob, III, Steven Gregorich, Eliseo Pérez-Stable, Sharon Murphy, Stephen Hecht, Dorothy Hatsukami, Eric Donny*



SYM16C: TOBACCO AND ORAL CANCER: MULTI-PRONGED APPROACH TO UNDERSTANDING WHICH SMOKERS ARE AT THE HIGHEST RISK

*Samir Khariwala**, *Saonli Basu*, *Andres Gomez*, *Dorothy Hatsukami*, *Stephen Hecht*, *Irina Stepanov*

SYM16D: OPTIMAL URINE AND PLASMA METABOLITES FOR ESTIMATING DAILY INTAKE OF NICOTINE FROM CIGARETTE SMOKING

*Neal Benowitz**, *Gideon St.Helen*, *Natalie Nardone*, *Lisa Sanderson Cox*, *Peyton Jacob, III*

SYM16E: BIOMARKER APPLICATIONS TO CHARACTERIZE SECONDHAND EXPOSURES IN CHILDREN

*Irina Stepanov**, *Wenkui Geng*, *Jun Meng*, *Theodore Wagener*, *David Fedele*, *Mirjana Djordjevic*

3:00 PM - 4:30 PM

Imperial Ballroom B (Ballroom Level)

Podium Presentation 4: Symposium 17

BRINGING IT ALL BACK HOME: MEASURING THE IMPLEMENTATION AND IMPACT OF SMOKE-FREE MULTI-UNIT HOUSING RULES

Chair: Brian King

*Audience: CL, PH, PO **

SYM17A: EVALUATION OF SMOKE-FREE HOUSING POLICY IMPACTS ON TOBACCO SMOKE EXPOSURE AND HEALTH OUTCOMES

*Lorna Thorpe**

SYM17B: AN ANALYSIS OF INDOOR AIR QUALITY IN RESPONSE TO THE IMPLEMENTATION OF HUD-MANDATED SMOKE-FREE HOUSING

*Andy Plunk**

SYM17C: EXPOSURE AND PERCEPTIONS OF SECONDHAND SMOKE EXPOSURE AND SMOKE-FREE MULTI-UNIT HOUSING REGULATIONS AMONG AFRICAN AMERICANS IN LOS ANGELES

*Lourdes Baezconde-Garbanati**

SYM17D: IMPLEMENTING TOBACCO CONTROL INTERVENTIONS IN PERMANENT SUPPORTIVE HOUSING FOR FORMERLY HOMELESS ADULTS

*Natalie Alizaga**



3:00 PM - 4:30 PM

Grand Ballroom B (Grand Ballroom Level)

Podium Presentation 4: Symposium 18

TRAJECTORIES OF TOBACCO PRODUCT USE AMONG ADOLESCENTS AND YOUNG ADULTS: LOOKING BEYOND INITIATION

Chair: Alexa Romberg

Audience: PH, PO *

SYM18A: STABLE TRAJECTORIES OF ENDS USE AND THEIR RELATIONSHIP WITH CIGARETTE SMOKING AMONG TEXAS ADOLESCENTS

Melissa Harrell, Christian Jackson, Anna Wilkinson, Alexandra Loukas, Cheryl Perry*

SYM18B: ENDS USE PREDICTS LONGITUDINAL TRANSITIONS IN CIGARETTE SMOKING ACROSS 2.5 YEARS AMONG YOUNG ADULTS

Alexandra Loukas, David Marsden, Nathan Marti, Baojiang Chen, Anna Wilkinson, Melissa Harrell, Cheryl Perry*

SYM18C: LONGITUDINAL PATTERNS OF TOBACCO PRODUCT USE IN YOUTH: A LATENT TRANSITION ANALYSIS

Alexa Romberg, Lindsay Pitzer, Elizabeth Hair, Raymond Niaura, Jennifer Cantrell, Erin Miller Lo, Allison Glasser, David Abrams, Donna Vallone*

SYM18D: IDENTIFYING LATENT TRAJECTORY GROUPS DESCRIBING THE USE OF CIGARETTES, E-CIGARETTES, AND CIGARILLOS/LITTLE CIGARS

Adam Cole, Ashok Chaurasia, Ryan Kennedy, Scott Leatherdale*

SYM18E: TRAJECTORIES OF E-CIGARETTE USE AMONG SMOKING AND NON-SMOKING ADOLESCENTS

Erin Vogel, Danielle Ramo, Kevin Delucchi, Mark Rubinstein*

3:00 PM - 4:30 PM

Franciscan CD (Ballroom Level)

Podium Presentation 4: Paper Session 10

BIOLOGICAL AND COGNITIVE EFFECTS OF NICOTINE

Chair: David Drobos

Audience: PC

PA10-1: SINGLE-CELL RNA-SEQUENCING OF HUMAN EMBRYONIC STEM CELL DIFFERENTIATION DELINEATES ADVERSE EFFECTS OF NICOTINE ON EMBRYONIC DEVELOPMENT

Hongchao Guo, Lei Tian, Joe Z Zhang, Tomoya Kitani, David T Paik, Joseph C Wu*

PA10-2: GUT, BRAIN, AND NICOTINE ADDICTION: NICOTINE SELF-ADMINISTRATION IS ASSOCIATED WITH CHANGES IN GUT MICROBIOTA AND ACCUMBENS PRO-INFLAMMATORY CYTOKINES

Cassandra Gipson-Reichardt, Mark Namba, Shrinath Narayanan, Athena Aktipis*



PA10-3: NEUROINFLAMMATORY MODULATION OF NICOTINE DEPENDENCE

Erin Anderson, Adewale Adeluyi, Jill Turner*

PA10-4: NICOTINE EFFECTS ON DEPENDENCE-RELATED ASSOCIATIVE LEARNING MECHANISMS IN HUMAN NON-SMOKERS

Britta Hahn, Ashleigh Wells, Agatha Lenartowicz, Marie Yuille*

3:00 PM - 4:30 PM

Imperial Ballroom A (Ballroom Level)

Podium Presentation 4: Paper Session 11

IMPROVING CESSATION TREATMENT FOR YOUNG SMOKERS

Chair: Alicia Allen

*Audience: CL, PH **

PA11-1: A MULTI-SITE DOSE-RANGING RANDOMIZED CONTROLLED TRIAL OF VARENICLINE FOR ADOLESCENT SMOKING CESSATION: EFFICACY AND SAFETY FINDINGS

Kevin Gray, Mark Rubinstein, Sarah Dubrava, Ann Holstein, Larry Samuels, Thomas McRae*

PA11-2: DOES EVERY TRY REALLY COUNT? DO FAILED QUIT ATTEMPTS FACILITATE OR PREVENT FUTURE QUIT ATTEMPTS AMONG ADOLESCENT SMOKERS?

Margaret Fahey, Kayla Turner, Kinsey Pebley, Leslie Robinson*

PA11-4: "ISN'T THERE A BUNCH OF SIDE EFFECTS?": A FOCUS GROUP STUDY ON YOUNG ADULT SMOKERS' BELIEFS ABOUT CESSATION TREATMENTS

Danielle Duarte, Julia Chen, Kathleen Dang, Leah Orozco, Kelvin Choi*

4:30 PM - 6:00 PM

Grand Ballroom A (Grand Ballroom Level)

Poster Session 4: Public Health (Session 2)



**SESSION SUMMARY
SATURDAY
FEBRUARY 23, 2019**



SATURDAY, FEBRUARY 23, 2019

8:00 AM - 12:15 PM

Yosemite Foyer (Ballroom Level)

Registration

8:00 AM - 11:00 AM

Green Room (Grand Ballroom Level)

Speaker Ready Room

8:30 AM - 10:00 AM

Franciscan CD (Ballroom Level)

Podium Presentation 5: Symposium 19

SMOKELESS TOBACCO AND ARECA NUT: GLOBAL DIVERSITY OF PRODUCTS AND PARALLELS IN ASSOCIATED HEALTH RISKS

Chair: Thaddeus Herzog

Chair: Irina Stepanov

Audience: PC, PH

SYM19A: GLOBAL DIVERSITY OF ARECA NUT-CONTAINING AND SMOKELESS TOBACCO PRODUCTS

Irina Stepanov, Prakash Gupta, Pankaj Chaturvedi, Sok Cheong, Olalekan Ayo-Yusuf, Samir Khariwala, Mark Parascandola*

SYM19B: ORAL DISEASE MANIFESTATIONS OF CHRONIC ARECA NUT USE

Samir Khariwala, Irina Stepanov, Pankaj Chaturvedi*

SYM19C: THE TRADITIONAL USE OF BETEL NUT (ARECA) PROMOTES SMOKELESS TOBACCO ADDICTION IN SOUTH ASIA AND ASSOCIATED HEALTH RISKS, AND A HYPOTHESIS FOR A NOVEL CESSATION THERAPY

*Roger Papke**

8:30 AM - 10:00 AM

Franciscan AB (Ballroom Level)

Podium Presentation 5: Symposium 20

PERSPECTIVES ON TOBACCO CESSATION FOR PATIENTS WITH TB, HIV AND/OR HEPATITIS C: EVIDENCE FROM FOUR COUNTRIES

Chair: Melanie Boeckmann

Audience: CI, PH *

SYM20A: PREVALENCE OF TOBACCO SMOKING AMONG TUBERCULOSIS PATIENTS IN BANGLADESH AND PAKISTAN

Anna-Marie Marshall, Omara Dogar, Ada Keding, Rumana Huque, Deepa Barua, Anne Readshaw, Kamran Siddiqi*



SYM20B: IMPLEMENTATION AGAINST THE ODDS: TOBACCO CESSATION FOR TUBERCULOSIS PATIENTS IN NEPAL

Melanie Boeckmann, Prabin Shrestha, Sudeepa Khanal, Sushil Baral, Daniel Kotz*

SYM20C: IMPROVING TB OUTCOMES BY MODIFYING LIFESTYLE BEHAVIORS THROUGH A BRIEF MOTIVATIONAL INTERVENTION FOLLOWED BY SHORT TEXT MESSAGES (PROLIFE): PILOTING STUDY

Goedele Louwagie, Kamran Siddiqi, Neo Morojele, Mona Kanaan, Noreen Mdege, John Tumbo, Max Bachmann, Olalekan Ayo-Yusuf*

SYM20D: REFERRAL AND TREATMENT OF HOSPITALIZED SMOKERS LIVING WITH HIV IN AN ACADEMIC MEDICAL CENTER

Babalola Faseru, Sharon Fitzgerald, Laura Mussulman, Kimber Richter*

SYM20E: PATTERNS AND CORRELATES OF CIGARETTE SMOKING AMONG PATIENTS RECEIVING TREATMENT FOR HEPATITIS C

Irene Pericot-Valverde, Alain Litwin*

8:30 AM - 10:00 AM

Imperial Ballroom A (Ballroom Level)

Podium Presentation 5: Symposium 21

NEW PERSPECTIVES ON MULTIPLE TOBACCO PRODUCT USE AND IMPLICATIONS FOR TOBACCO REGULATION

Chair: Joe McClernon

Audience: PH, PO

SYM21A: ETHNIC DIFFERENCES IN PATTERNS OF TRANSITION BETWEEN CIGARETTE AND E-CIGARETTE USE: RESULTS FROM A POOLED ANALYSIS OF DATA FROM THREE PROSPECTIVE COHORT STUDIES

Jessica Barrington-Trimis, Mariel Bello, Fefei Liu, Adam Leventhal, Grace Kong, Margaret Mayer, Tess Boley Cruz, Suchitra Krishnan-Sarin, Rob McConnell*

SYM21B: HYPOTHETICAL REGULATIONS REGARDING E-CIGARETTE FLAVOR AVAILABILITY AFFECTS ANTICIPATED E-CIGARETTE AND COMBUSTED CIGARETTE USE AMONG DUAL USERS

Lauren Pacek, Jason Oliver, Joe McClernon*

SYM21C: PREDICTORS OF "IN THE MOMENT" PRODUCT CHOICE IN ADULT DUAL CIGARETTE AND ENDS USERS

Robin Mermelstein, Donald Hedeker, Oksana Pugach*

SYM21D: AN EXPERIMENTAL TOBACCO AND NICOTINE PRODUCT MARKETPLACE: A PLATFORM FOR TESTING POLICIES AND REGULATIONS

Dana Carroll, Lori Strayer, Warren Bickel, Dorothy Hatsukami*



8:30 AM - 10:00 AM

Imperial Ballroom B (Ballroom Level)

Podium Presentation 5: Symposium 22

EXPLORING COMBUSTIBLE CIGARETTE INNOVATIONS IN A SMOKEFREE WORLD

Chair: Janet Hoek

Audience: PH, PO

SYM22A: SMOKERS' AND SUSCEPTIBLE NON-SMOKERS' RESPONSES TO FLAVOUR CAPSULE VARIANT CIGARETTES: AN ONLINE SURVEY

Janet Hoek, Philip Gendall, Christine Eckert, Jordan Louviere, Mei-Ling Blank, James Thrasher*

SYM22B: PREVALENCE AND CORRELATES OF FLAVOR CAPSULE USE IN THE UNITED STATES: RESULTS FROM NATIONAL SURVEYS OF ADOLESCENTS AND YOUNG ADULTS, 2013-2016

James Thrasher, Paula Lozano, Huizhong Yang, Yoojin Cho, Crawford Moodie*

SYM22C: USE OF CIGARETTES WITH FLAVOUR-CHANGING CAPSULES AMONG SMOKERS IN THE UNITED KINGDOM: AN ONLINE SURVEY

Crawford Moodie, Anne Marie MacKintosh, James Thrasher, Ann McNeill, Sara Hitchman*

SYM22D: Discussant

*Timothy Dewhirst**

8:30 AM - 10:00 AM

Plaza A (Lobby Level)

Podium Presentation 5: Paper Session 12

USING MOBILE HEALTH TO TARGET HARD-TO-REACH SUBGROUPS

Chair: Lion Shahab

*Audience: CL **

PA12-1: DEVELOPMENT AND EFFICACY OF AN MHEALTH TOBACCO INTERVENTION TARGETING AFRICAN AMERICANS

Monica Webb Hooper, David Miller, Enrique Saldivar, Ming-Chun Huang*

PA12-2: A COMPARISON OF FACEBOOK CAMPAIGN SUCCESS IN RECRUITING ETHNICALLY DIVERSE SMOKERS INTO A SOCIAL MEDIA-BASED TOBACCO TREATMENT TRIAL

Connor Phillips, Connie Pechmann, Douglas Calder, Judith Prochaska*

PA12-3: INITIAL PILOT STUDY OUTCOMES OF THE PUT IT OUT PROJECT: A FACEBOOK SMOKING CESSATION INTERVENTION FOR SEXUAL AND GENDER MINORITY YOUNG ADULTS

Erin Vogel, Gary Humfleet, Judith Prochaska, Meredith Meacham, Alina Belohlavek, Danielle Ramo*



PA12-4: PRELIMINARY OUTCOMES FROM THE SMOKING TOBACCO AND DRINKING STUDY AT THREE MONTH FOLLOW UP

Larissa Maier, Manpreet Kaur, Danielle Ramo, Mandy Chan, Derek Satre*

8:30 AM - 10:00 AM

Grand Ballroom B (Grand Ballroom)

Podium Presentation 5: Paper Session 13

CANNABIS AND TOBACCO CO-USE: BEHAVIOR AND BIOMARKERS

Chair: Jennifer Pearson

Audience: CL, PH, PO

PA13-1: PREVALENCE OF MARIJUANA USE IN ELECTRONIC CIGARETTES AMONG YOUTH UNITED STATES 2017

Katrina Trivers, Andrea Gentzke, Elyse Phillips, Gillian Schauer*

PA13-2: CO-USE OF MARIJUANA AND TOBACCO PRODUCTS AMONG YOUNG ADULTS

Eric Pedersen, Joan Tucker, Rachana Seelam, Michael Dunbar, Regina Shih, Elizabeth D'Amico*

PA13-3: BIOMARKERS OF EXPOSURE AMONG CONCURRENT USERS OF TOBACCO AND CANNABIS FINDINGS FROM WAVE 1 OF THE POPULATION ASSESSMENT OF TOBACCO AND HEALTH STUDY

Danielle Smith, Richard OConnor, Binnian Wei, Mark Travers, Andrew Hyland, Maciej Goniewicz*

PA13-4: ASSOCIATIONS OF RECREATIONAL AND MEDICAL CANNABIS USE WITH QUIT OUTCOME AMONG PRIMARY CARE PATIENTS ENROLLED IN A SMOKING CESSATION PROGRAM

Sabrina Voci, Laurie Zawertailo, Anna Ivanova, Dolly Baliunas, Sarwar Hussain, Peter Selby*

PA13-5: CANNABIS USE AND INCREASED RISK OF CIGARETTE SMOKING INITIATION, PERSISTENCE, AND RELAPSE AMONG ADULTS IN THE UNITED STATES: DATA FROM TWO WAVES OF THE POPULATION ASSESSMENT OF TOBACCO AND HEALTH (PATH) STUDY

Andrea Weinberger, Renee Goodwin*

8:30 AM - 10:00 AM

Plaza B (Lobby Level)

Podium Presentation 5: Paper Session 14

IMPROVING CESSATION IN VULNERABLE SMOKERS: ADDRESSING RACIAL AND SOCIOECONOMIC DISPARITIES

Chair: Steven Fu

Chair: Norval Hickman

Audience: CL *

PA14-1: BREATHEFREE: PARTNERING WITH RESIDENTS TO INCREASE SMOKING CESSATION IN LOW-INCOME NEIGHBORHOODS

Erika Trapl, Sarah Gonzalez*



PA14-2: RACE DIFFERENCES IN EFFICACY OF PHARMACOTHERAPIES FOR SMOKING CESSATION: SUBGROUP ANALYSIS OF THE RANDOMIZED, ACTIVE- AND PLACEBO-CONTROLLED EAGLES TRIAL

Nicole Nollen, Jasjit Ahluwalia, Lisa Sanderson Cox, Kola Okuyemi, Larry Samuels, David Lawrence, Neal Benowitz*

PA14-3: ICAN QUIT IN PREGNANCY: A MULTI-COMPONENT INTERVENTION FOR SMOKING CESSATION CARE AMONG PREGNANT INDIGENOUS AUSTRALIAN WOMEN

Gillian Gould, Michelle Bovill, Billie Bonevski, Maree Gruppetta, Lou Atkins, Yael Bar Zeev*

PA14-4: MULTILEVEL INTERVENTIONS TO REDUCE CALIFORNIA TRIBAL YOUTH COMMERCIAL TOBACCO USE

Roland Moore, Maya Goodblanket, Pedro Domingo, Juliet Lee, Dave Gilder, Daniel Calac*

PA14-5: CULTURALLY SPECIFIC SERVICES INCREASE ENGAGEMENT AMONG AFRICAN AMERICAN QUITLINE ENROLLEES

Monica Webb Hooper, Erica Salmon, Lacreasha Johnson, Kimberlee Hunt, Kelly Carpenter*

10:00 AM - 10:30 AM

SRNT CENTRAL, Yosemite Room (Ballroom Level)

Refreshment Break

10:00 AM - 10:30 AM

Seacliff Room (Lobby Level)

Meet-the-Editor Session

Editor-in-Chief: Marcus Munafò, PhD, *Nicotine and Tobacco Research Journal*

10:30 AM - 12:00 PM

Plaza A (Lobby Level)

Podium Presentation 6: Symposium 23

NEW STRATEGIES TO INCREASE THE DELIVERY OF EFFECTIVE TOBACCO CESSATION TREATMENT IN PRIMARY CARE

Chair: Melanie Boeckmann

Audience: CL

SYM23A: OFFERING TOBACCO TREATMENT OUTSIDE OF OFFICE VISITS TO A POPULATION OF SMOKERS IN A PRIMARY CARE NETWORK

Nancy Rigotti, Sara Kalkhoran*



SYM23C: MEDICATION SAMPLING FOR SMOKERS INITIAL RESULTS FROM A CLUSTER RANDOMIZED CLINICAL TRIAL IN PRIMARY CARE

*Matthew Carpenter**, *Amy Wahlquist*, *Robert Davis*, *Jennifer Dahne*, *Michael Cummings*, *Kevin GrayMD*, *Brent Egan*

SYM23E: 12 MONTH EVALUATION OF AN EMR SUPPORTED STAFF ROLE CHANGE FOR PROVISION OF TOBACCO CESSATION CARE IN 8 PRIMARY CARE SAFETY-NET CLINICS

*Susan Flocke**, *Eileen Seeholzer*, *Steven Lewis*, *Elizabeth Antognoli*, *India Gill*, *Jeanmarie Rose*, *Elvira Ordillas*

SYM23F: ELECTRONIC HEALTH RECORD BASED SMOKING TREATMENT REFERRAL: CLINIC STAFF ATTITUDES AND REFERRAL SUCCESS

*Madeline Oguss**, *Danielle McCarthy*, *David Fraser*, *Megan Piper*, *Jessica Cook*, *Tanya Schlam*, *Timothy Baker*, *Barbara Bowers*, *Eileen Partridge*, *Michael Fiore*

SYM23G: WILL SMOKERS CONTINUE IN CHRONIC CARE ONCE THEY RELAPSE?

*Tanya Schlam**, *Megan Piper*, *Jessica Cook*, *Michael Fiore*, *Timothy Baker*

SYM23H: TRAINING GENERAL PRACTITIONERS IN GERMANY TO PROVIDE BRIEF STOP-SMOKING ADVICE: PROCESS EVALUATION OF A PILOT STUDY

*Sabrina Kastaun**, *Verena Leve*, *Daniel Kotz*

10:30 AM - 12:00 PM

Imperial Ballroom B (Ballroom Level)

Podium Presentation 6: Symposium 24

THE GROWING PUBLIC HEALTH RISKS FROM ASPIRING TRANSNATIONAL TOBACCO COMPANIES

Chair: Kelley Lee

Audience: PO

SYM24A: CHINESE TOBACCO INTERESTS IN EAST AFRICA: IMPLICATIONS FOR TOBACCO CONTROL REGIONALLY AND GLOBALLY

*Julia Smith**, *Jennifer Fang*

SYM24B: GOING GLOBAL: THE ILLICIT TOBACCO TRADE FROM ASIA TO LATIN AMERICA AND THE CARIBBEAN

*Eduardo Bianco**, *Benoit Gomis*, *Jennifer Fang*, *Kelley Lee*

SYM24C: "WE THINK GLOBALLY": THE RISE OF PARAGUAY'S TABACALERA DEL ESTE AS A THREAT TO GLOBAL TOBACCO CONTROL

*Kelley Lee**, *Benoit Gomis*, *Natalia Carillo Botero*, *Philip Shepherd*, *Roberto Magno Iglesias*

SYM24D: GRAND RIVER ENTERPRISES: THE RISE OF INDIGENOUS COMMERCIAL TOBACCO ECONOMIES

*Rob Cunningham**



10:30 AM - 12:00 PM

Grand Ballroom B (Grand Ballroom Level)

Podium Presentation 6: Symposium 25

INNOVATIVE METHODS FOR RESEARCH ON E-CIGARETTES

Chair: Jessica Braymiller

Audience: PH

SYM25A: ASSESSMENTS OF E-CIGARETTE DEPENDENCE IN ADULT DUAL USERS: PSYCHOMETRICS AND VALIDITY OF THREE MEASURES

Megan Piper, Robin Mermelstein, Timothy Baker, Donald Hedeker, Neal Benowitz, Douglas Jorenby*

SYM25B: ESTIMATING THE CAUSAL EFFECT OF ELECTRONIC CIGARETTE USE ON CONVENTIONAL CIGARETTE SMOKING: ACCOUNTING FOR SHARED RISK USING PROPENSITY SCORE METHODS

Arielle Selya, Sooyong Kim*

SYM25C: AGE-VARYING ASSOCIATIONS BETWEEN E-CIGARETTE, HOOKAH, AND MARIJUANA USE AMONG YOUNG PEOPLE: FINDINGS FROM THE PATH STUDY

Jessica Braymiller, Stephanie Lanza*

SYM25D: MEASUREMENT OF ELECTRONIC NICOTINE EXPECTANCIES AMONG YOUNG ADULTS: FACTOR ANALYSIS, ITEM RESPONSE CHARACTERISTICS, AND PRELIMINARY CONCURRENT VALIDITY

Paul Harrell, Stephen Stark, Kelli Will, Seok Joon Chun, Andrew Plunk, Laurel Brockenberry, Thomas Brandon*

SYM25E: ASSESSING NICOTINE DEPENDENCE IN DUAL-USERS OF CIGARETTES AND ENDS: UNIQUE AND COMMON ELEMENTS OF DEPENDENCE

Eva Rest, Robin Mermelstein, Donald Hedeker*

10:30 AM - 12:00 PM

Franciscan CD (Ballroom Level)

Podium Presentation 6: Symposium 26

ADVANCES IN THIRDHAND TOBACCO SMOKE RESEARCH

Chair: Hugo Destailats

Audience: PC

SYM26A: NICOTINE AND NNK IN THIRDHAND CIGARETTE SMOKE

*Suzaynn Schick**

SYM26B: BIOMARKERS FOR THS, AND THE SEARCH FOR BIOMARKERS TO DISTINGUISH THS EXPOSURE FROM SHS EXPOSURE

Peyton Jacob, III, Christopher Havel, Neal Benowitz*



SYM26C: GENETIC SUSCEPTIBILITY TO THIRDHAND SMOKE-INDUCED LUNG CANCER DEVELOPMENT IN MICE

Antoine Snijders, Jian-Hua Mao, Bo Hang*

SYM26D: THIRDHAND SMOKE POLLUTION AND REMEDIATION IN LOW-INCOME MULTIUNIT HOUSING

*Georg Matt**

10:30 AM - 12:00 PM

Franciscan AB (Ballroom Level)

Podium Presentation 6: Paper Session 15

EMERGING EVIDENCE ON E-CIGARETTE TOXICITY

Co-Chairs: Bartosz Koszowski, Wallace Pickworth

Audience: PC

PA15-1: IN UTERO EXPOSURE TO E-CIGARETTES MODULATES PLATELET FUNCTION AND INCREASES THE RISK OF THROMBOGENESIS, IN MICE

*Zubair Karim, Keziah Hernandez, José Rivera, Fadi Khasawneh, Fatima Alshbool**

PA15-2: RELATIVE ENDOTHELIAL TOXICITY OF TOBACCO SMOKE AND E-CIGARETTE AEROSOL: A FUNCTIONAL AND MECHANISTICAL ASSESSMENT

Leila Mohammadi, Ronak Derakhshandeh, Daniel Han, Abel Huang, Adam Whitlatch, Suzaynn Schick, Matthew Springer*

PA15-3: VAPING DEREGULATES CANCER-RELATED GENES AND ASSOCIATED MOLECULAR PATHWAYS IN THE ORAL EPITHELIUM

Ahmad Besaratinia, Stella Tommasi, Andrew Caliri, Amanda Caceres, Debra Moreno, Meng Li, Yibu Chen, Kimberly Siegmund*

PA15-4: ASSESSING CARDIOVASCULAR RISKS ASSOCIATED WITH E-CIGARETTES WITH HUMAN INDUCED PLURIPOTENT STEM CELL-DERIVED ENDOTHELIAL CELLS

Won Lee, Yang Zhou, Sang-Ging Ong, Lei Tian, Natalie Baker, Hye Ryeong Bae, Leila Mohammadi, Matthew Springer, Suzaynn Schick, Aruni Bhatnagar, Joseph Wu*

PA15-5: NEUROTOXIC REACTIVE ASTROCYTES AS ELECTRONIC CIGARETTES EXPOSURE AND INJURY BIOMARKERS

*Yiling Hong**

10:30 AM - 12:00 PM

Imperial Ballroom A (Ballroom Level)

Podium Presentation 6: Paper Session 16

CIGAR USE: IMPLICATIONS FOR PROGRAM AND POLICY

Chair: Cristine Delnevo

*Audience: PH, PO **



PA16-1: TRENDS IN CIGAR USE IN THE UNITED STATES BY RACE/ETHNICITY: 2002 TO 2016

Lisa Cruz, Andrea Weinberger, Renee Goodwin*

PA16-2: FLAVORED CIGAR SMOKING AMONG AFRICAN AMERICAN YOUNG ADULT DUAL USERS: AN ECOLOGICAL MOMENTARY ASSESSMENT

Julia Cen Chen, Kelvin Choi, Thomas Kirchner, Robert Feldman, James Butler, Erin Mead*

PA16-3: REASONS FOR LCC USE AMONG A NATIONAL SAMPLE OF YOUTH AND YOUNG ADULTS

Morgane Bennett, Haijun Xiao, Elizabeth Hair, Donna Vallone*

PA16-4: "PHANTOM SMOKERS": SMOKER IDENTITY AMONG TEEN USERS OF CIGAR PRODUCTS

Rock Lim, Karen Ishler, Erika Trapl, Sarah Koopman-Gonzalez, Elizabeth Antognoli, David Cavallo, Susan Flocke*

PA16-5: SPATIAL ASSOCIATIONS BETWEEN STATE LEVEL CURRENT CIGAR USE AND CIGAR TAX TYPE

*Dina Jones**

PA16-6: CHANGES IN SALES OF EXPLICIT- AND CONCEPT-FLAVORED CIGARS IN PROVIDENCE, RHODE ISLAND FOLLOWING IMPLEMENTATION OF A CITYWIDE SALES RESTRICTION POLICY

Todd Rogers, Ashley Feld, Doris Gammon, Elizabeth Brown, Lindsay Olson, James Nonnemaker, Martha Engstrom, Tarsha McCrae, Enver Holder-Hayes, Ashley Ross, Erin Boles Welsh, Geri Guardino, Deborah Pearlman*

10:30 AM - 12:00 PM

Plaza B (Lobby Level)

Podium Presentation 6: Paper Session 17

EFFECTS OF ANTITOBACCO MASS MEDIA INTERVENTIONS

Chair: Joseph Lee

*Audience: PH **

PA17-1: EFFECTS OF MASS MEDIA AND SOCIAL MEDIA COVERAGE OF ANTITOBACCO CONTENT ON YOUTH AND YOUNG ADULT SMOKING INTENTIONS

Robert Hornik, Laura Gibson, Steven Binns, Sherry Emery, Veronica Epstein, Michelle Jeong, Kwanho Kim, Yoonsang Kim, Elissa Kranzler, Stella Lee, Jiaying Liu, Matthew O'Donnell, Leeann Siegel, Hy Tran, Allyson Volinsky, Sharon Williams, Qinghua Yang*

PA17-2: THE EFFECT OF A NATIONAL SMOKING PREVENTION MEDIA CAMPAIGN ON YOUTH INITIATION TO CIGARETTES

Jennifer Duke, Anna MacMonegle, James Nonnemaker, Matthew Farrelly, Xiaoquan Zhao, Janine Delahanty, Alexandria Smith, Pamela Rao, Jane Allen*

PA17-3: EFFECTS OF PROMOTING FREE CESSATION MEDICATIONS ON QUITLINE CALLS AND CALLER CHARACTERISTICS DURING A NATIONAL ANTISMOKING CAMPAIGN

Lei Zhang, Nathan Mann, Jesse Thompson, Randi Frank, Robert Rodes, Kevin Davis, Rebecca Murphy, Stephen Babb*



PA17-4: RECALL OF TOBACCO COMMUNICATION CAMPAIGNS: EXAMINING CROSS-CAMPAIGN CUMULATIVE EXPOSURE USING A NATIONAL SAMPLE OF ADOLESCENTS

Sarah Kowitt, Tara Queen, Seth Noar, Adam Goldstein*

PA17-5: AWARENESS OF AND RECEPTIVITY TO THE FRESH EMPIRE TOBACCO PUBLIC EDUCATION CAMPAIGN AMONG HIP HOP YOUTH

Jamie Guillory, Amy Henes, Matthew Farrelly, Leah Fiacco, Ishrat Alam, Laurel Curry, Ollie Ganz, Leah Hoffman, Janine Delahanty*

PA17-6: ANTI-TOBACCO CAMPAIGN TARGETING: A RISK FACTOR ANALYSIS OF PATH WAVE 2

Caitlin Weiger, Meghan Moran*

12:00 PM - 1:30 PM

Grand Ballroom A (Grand Ballroom Level)

Poster Session 5: Rapid Response (Late-Breaking)



AUTHOR INDEX



A

Abrams, David	SYM18C
Adeluyi, Adewale	PA10-3
Aguirre, Claudia	PA5-5
Ahluwalia, Jasjit	PA14-2
Akers, Austin T.	SYM13A
Aktipis, Athena	PA10-2
Alam, Ishrat	PA17-5
Albelda, Benjamin	PA7-3
Alber, Julia	PA9-5
Alexis, Neil E.	PA4-1
Alizaga, Natalie	SYM17D
Alkhaif, Yasmin	SYM3A
Allen, Alicia	PA5-2
Allen, Jane	PA17-2
Allen, Sharon	PA5-2
Allen, Sophia	PA6-6
Allenby, Cheyenne	SYM10D, PA5-3
Ashbool, Fatima Z.	PA15-1
Ambrose, Bridget	SYM12E
Anderson, Erin L.	PA10-3
Anthenelli, Robert	PA3-4
Antognoli, Elizabeth	SYM23E, SYM23D, PA16-4
Asfar, Taghrid	SYM15A
Ashare, Rebecca	SYM10D, PA5-3
Atkins, Lou	PA14-3
Avelar, Alicia J.	SYM13A
Ayo-Yusuf, Olalekan	SYM19A, SYM20C

B

Babb, Stephen	PA17-3
Bachmann, Max O.	SYM20C
Bae, Hye Ryeong	PA15-4
Baezconde-Garbanati, Lourdes	SYM17C
Baig, Sabeeh A.	PA9-3
Baker, Amanda L.	SYM11A
Baker, Natalie	PA15-4
Baker, Nathaniel L.	PA5-4
Baker, Timothy	SYM7D, SYM7C, SYM23G, SYM23F, SYM25A
Balassone, Anna	PA3-5
Baliunas, Dolly	PA13-4
Baral, Sushil C.	SYM20B
Barrett, Scott T.	SYM6C
Barrett, Sean	PA1-3
Barrington-Trimis, Jessica L.	SYM21A
Barua, Deepa	SYM20A
Bar Zeev, Yael	PA14-3
Basu, Saonli	SYM16C
Bauer, Judith	SYM11A
Bauld, Linda	SYM2E
Beard, Emma	PA8-4
Beck, Alison	SYM11A
Bello, Mariel S.	SYM21A
Belohlavek, Alina	PA12-3
Bennett, Morgane	PA16-3
Benowitz, Neal	SYM4A, SYM12C, SYM16B, SYM16D, SYM25A, SYM26B, PA14-2
Bernardo, Leah	SYM10D, PA5-3
Bernd, Karen K.	SYM15C

Besaratinia, Ahmad	PA15-3
Bevens, Rick A.	SYM6C
Bhat, Tariq	SYM9E
Bhatnagar, Aruni	PA15-4
Bhatti, Harmanpreet	SYM13B
Bianco, Eduardo	SYM24B
Bickel, Warren	SYM21D
Binns, Steven	PA17-1
Blank, Mei-Ling	SYM22A
Blount, Ben	SYM12E
Boeckmann, Melanie	SYM20B
Bogdanovica, Ilze	PA8-2
Bold, Krysten W.	SYM7F, SYM7E, SYM13C
Boles Welsh, Erin	PA16-6
Boley Cruz, Tess	SYM21A
Bonevski, Billie	PA14-3
Borek, Nicolette	SYM12E
Bouharati, Céilia	PA4-5
Bovill, Michelle	PA14-3
Bowen, Julia	PA9-4
Bowers, Barbara	SYM23F
Boykan, Rachel	SYM2D, SYM2D
Brandon, Karen O.	SYM11B
Brandon, Thomas H.	SYM11B, SYM25D
Braymiller, Jessica L.	SYM25C
Brennan, Emily	SYM8D
Brewer, Noel T.	PA7-1
Bricker, Jonathan	SYM5A, SYM5B
Brinkman, Marielle C.	SYM15B
Britton, Ben	SYM11A
Britton, John	PA8-2
Brockenberry, Laurel O.	SYM25D
Brose, Leonie S.	PA3-3, PA9-4
Brosnan, Phoebe	PA9-2
Brown, Elizabeth	PA8-3, PA16-6
Brown, Jamie	PA3-3, PA8-4
Brunzell, Darlene H.	SYM14C
Buchanan, Cole J.	PA5-4
Bullen, Christopher	PA9-1, PA9-2
Burke, Anne Marie	PA5-3
Burnley, Annabel J.	SYM13C
Burris, Jessica L.	SYM11C
Businelle, Michael S.	SYM5C
Buta, Eugenia	SYM13B
Butler, James	PA16-2
Byron, M. Justin	PA6-5

C

Caceres, Amanda	PA15-3
Caceres, Ana I.	PA4-2
Calac, Daniel	PA14-4
Calder, Douglas	PA12-2
Caldwell, Kathy	SYM12E
Caliri, Andrew W.	PA15-3
Callas, Peter W.	PA6-3
Cancelada, Lucia	SYM9D
Cano, Juan	PA3-5
Cantrell, Jennifer	SYM18C
Cao, Wen	SYM10D
Caponnetto, Pasquale	SYM2E
Cappella, Joseph	PA9-5
Carillo Botero, Natalia	SYM24C



SRNT SRNT 2019 • AUTHOR INDEX

Fieberg, Ann PA5-2
 Fiore, Michael SYM23F, SYM23G
 Fitzgerald, Sharon A. SYM20D
 Flocke, Susan SYM23D, SYM23E, PA16-4
 Fong, Geoffrey SYM4C, SYM9A
 Fontanillas, Pierre PA2-3
 Forbes, Erin SYM11A
 Ford, Matthew M. PA1-4, PA2-1
 Foulds, Jonathan PA6-6, PA9-2
 Frank, Randi PA17-3
 Fraser, David SYM23F
 Friedman, Abigail S. PA8-5
 Froeliger, Brett SYM10C
 Fu, Steven PA3-6
 Fucito, Lisa M. SYM7F, SYM7E, SYM13C

G

Gammon, Doris SYM2A, PA8-3, PA16-6
 Ganapathy, Vengatesh PA4-5
 Ganesan, Deepak SYM5E
 Ganz, Ollie PA17-5
 Garcia-Romeu, Albert P. PA5-1
 Gdanski, Jonathan PA7-4
 Gendall, Philip SYM22A
 Geng, Wenkui SYM16E
 Gentzke, Andrea PA13-1
 Ghio, Andrew PA4-1
 Ghosh, Arunava PA4-1
 Gibson, Laura A. PA17-1
 Gilder, Dave PA14-4
 Gill, India SYM23D, SYM23E
 Gilljam, Hans SYM4D
 Giovenco, Daniel P. PA9-3
 Gipson-Reichardt, Cassandra D. PA10-2
 Glasser, Allison SYM18C
 Goldberg, Lisa PA2-2
 Goldstein, Adam O. PA17-4
 Gomez, Andres SYM16C
 Gomis, Benoit SYM24C, SYM24B
 Goniewicz, Maciej SYM2B, SYM2D, SYM9B,
 SYM9E, SYM9C, SYM12C, SYM12E, PA4-4, PA13-3
 Gonzalez, Sarah K. PA14-1
 Goodblanket, Maya PA14-4
 Goodwin, Renee PA13-5
 Goodwin, Renee D. SYM7A
 Goodwin, Renee G. PA16-1
 Gould, Gillian PA14-3
 Gould, Thomas PA2-2
 Grant, Kathleen PA1-4
 Gravely, Shannon SYM9A
 Gray, Kevin M. SYM23B, SYM23C, PA5-4, PA11-1
 Green, Barry G. SYM13B
 Green, Charles PA3-4
 Gregorich, Steven E. SYM16B
 Griffiths, Roland R. PA5-1
 Gruppeta, Maree PA14-3
 Guardino, Geri PA16-6
 Gueorguieva, Ralitza SYM7E, SYM7F, SYM13B
 Guillory, Jamie PA17-5
 Gulce, Askin SYM2E
 Gundel, Lara A. SYM9D
 Guo, Hongchao PA10-1

Guo, Wendi PA1-2
 Gupta, Prakash C. SYM19A

H

Hahn, Britta PA10-4
 Hair, Elizabeth SYM18C, PA16-3
 Hall, Marissa G. PA6-5, PA7-1
 Hameed, Ahmad PA6-6
 Hamilton, Roy PA5-3
 Hammett, Patrick J. PA3-6
 Hammond, David SYM9B
 Han, Daniel PA15-2
 Hang, Bo SYM26C
 Hara, Mervi SYM4D
 Harrell, Melissa SYM18A, SYM18B
 Harrell, Paul T. SYM25D
 Harrison, Katherine PA5-2
 Harvanko, Arit SYM12C
 Hatsukami, Dorothy SYM4A, SYM12E, SYM12D,
 SYM16C, SYM16B, SYM21D, PA6-1, PA6-4
 Hauser, Cindy D. SYM15C
 Havel, Christopher SYM26B
 Hawkey, Andrew PA1-2
 Hearn, Brian SYM12A
 Hebert, Emily T. SYM5C
 Hecht, Stephen SYM12E, SYM16C, SYM16B, SYM16A
 Heckman, Bryan W. SYM3B
 Hedeker, Donald SYM21C, SYM25E, SYM25A
 Heffner, Jaimee SYM5B, SYM5A
 Henderson, Brandon J. SYM13A
 Henes, Amy PA17-5
 Hensel, Edward C. SYM12B, SYM15E
 Herbert, Natalie PA9-5
 Hernandez, Jorge PA3-5
 Hernandez, Keziah PA15-1
 Hilleboe, Ana PA5-5
 Hitchman, Sara SYM22C
 Hitsman, Brian SYM11D
 Hitsman Veluz-Wilkins, Anna SYM11D
 Ho, Elsie SYM5D, SYM5D
 Hoek, Janet SYM22A
 Hoffman, Leah PA17-5
 Holder-Hayes, Enver PA16-6
 Hole, Anita SYM11D
 Holstein, Ann R. PA11-1
 Hong, Yiling PA15-5
 Hood, Caitlyn O. PA5-4
 Hornik, Robert PA17-1
 Howard, Sarah PA1-2
 Hrabovsky, Shari PA6-6
 Huang, Abel PA15-2
 Huang, Ming-Chun PA12-1
 Hughes, John R. PA6-3
 Humfleet, Gary L. PA12-3
 Hunt, Kimberlee PA14-5
 Huque, Rumana SYM20A
 Hussain, Sarwar PA13-4
 Hyland, Andrew SYM12E, PA13-3



I

Ingraham, Cynthia PA1-1
 Ishler, Karen PA16-4
 Ivanova, Anna PA13-4

J

Jabba, Sairam V. PA4-2
 Jackson, Asti SYM13B
 Jackson, Christian SYM18A
 Jacob, III, Peyton SYM16D, SYM16B, SYM26B
 Jacobs, David PA1-4, PA2-1
 Janes, Amy SYM10D
 Jao, Nancy C. SYM11D
 Jason, Kim SYM2E
 Jatlow, Peter SYM13C
 Jensen, Joni PA6-4
 Jeong, Michelle PA7-1, PA17-1
 Jinsong, Chen SYM5D
 Johnson, Adrienne L. SYM7D
 Johnson, Lacresha PA14-5
 Johnson, Matthew W. PA5-1
 Jones, Dina PA16-5
 Jordt, Sven-Eric PA4-2
 Jorenbj, Douglas SYM25A

K

Kalan, Mohammad E. SYM15A
 Kalathil, Suresh SYM9E
 Kalhan, Ravi SYM11D
 Kalkhoran, Sara SYM23A
 Kamens, Helen M. SYM14A
 Kanaan, Mona SYM20C
 Karelitz, Joshua SYM6D
 Karim, Zubair A. PA15-1
 Kassem, Nada O. SYM15B
 Kassem, Noura O. SYM15B
 Kastaun, Sabrina SYM23H
 Kaur, Manpreet PA12-4
 Kaye, Jesse T. SYM7C
 Keding, Ada SYM20A
 Kendzor, Darla SYM5C
 Kennedy, Ryan D. SYM18D
 Khanal, Sudeepa SYM20B
 Khariwala, Samir S. SYM16C, SYM19B, SYM19A
 Khasawneh, Fadi T. PA15-1
 Kim, Kwanho PA17-1
 Kim, Sooyong SYM25B
 Kim, Yoonsang PA17-1
 Kimmel, Heather SYM12E
 King, Brian SYM2A
 Kinnunen, Jaana SYM4E
 Kirchner, Thomas PA16-2
 Kirkpatrick, Matt PA5-5
 Kitani, Tomoya PA2-4, PA10-1
 Klempere, Elias M. PA6-3
 Ko, Jennifer SYM16B

Kong, Grace SYM21A
 Konkel, Karen SYM12E
 Koopman-Gonzalez, Sarah PA16-4
 Koopmeiners, Joseph SYM4A, PA6-1, PA6-4
 Kosiba, Jesse D. SYM3C
 Kotlyar, Michael PA6-4
 Kotz, Daniel SYM20B, SYM23H
 Kowitt, Sarah D. PA17-4
 Kranzler, Elissa PA17-1
 Krebs, Nicolle PA6-6
 Krishnan-Sarin, Suchitra SYM13B, SYM13C, SYM21A
 Kuipers, Mirte A. PA8-4
 Kurland, Brenda F. PA6-2
 Kutlu, Munir PA2-2
 Kwan, David A. SYM6C
 Kypriotakis, George PA3-4

L

Laitinen, Ulla SYM4E
 Laking, George PA9-1
 Lamb, Thomas R. SYM2C
 Lambert, Elizabeth SYM12E
 Lando, Harry PA3-6
 Langer, Corey SYM11D
 Lanza, Stephanie T. SYM25C
 LaRowe, Lisa R. SYM3C, SYM3B
 Larson, Chris E. SYM6C
 Laugesen, Murray PA9-1
 Lawrence, David PA3-4, PA14-2
 Leatherdale, Scott T. SYM18D
 Lee, Anna M. SYM14D
 Lee, Juliet PA3-5, PA14-4
 Lee, Kelley SYM24C, SYM24B
 Lee, Stella J. PA17-1
 Lee, Won H. PA15-4
 Leigh, Noel SYM2B, SYM9C, SYM9E
 Leitzinger, Jamie O. PA2-1
 Le Marchand, Loic SYM16A
 Lenartowicz, Agatha PA10-4
 Leone, Frank SYM11D
 Lerman, Caryn SYM10D, PA5-3
 LeSage, Mark PA1-5
 Lester, Courtney PA6-6
 Leve, Verena SYM23H
 Leventhal, Adam SYM21A, PA5-5
 Levin, Edward D. PA1-2
 Levy, Doug SYM11E
 Lewis, Steven SYM23D, SYM23E
 Li, Dongmei PA4-4
 Li, Meng PA15-3
 Liao, Jason PA6-6
 Lim, Rock PA16-4
 Lindgren, Bruce SYM12D
 Lisko, Joseph G. SYM12A
 Litter, Marta I. SYM9D
 Litwin, Alain H. SYM20E
 Liu, Fefei SYM21A
 Liu, Jiaying PA17-1
 Loomis, Brett SYM2A
 Loughhead, James SYM10D, PA5-3
 Loukas, Alexandra SYM18A, SYM18B
 Louviere, Jordan SYM22A



SRNT SRNT 2019 • AUTHOR INDEX

Louwagie, Goedele M. SYM20C
 Lozano, Paula SYM22B
 Luo, Xianghua PA6-4

M

Ma, Ning PA2-4
 MacKillop, James PA2-3
 MacKintosh, Anne Marie SYM22C
 MacMonegle, Anna PA17-2
 Maglia, Marilena SYM2E
 Magno Iglesias, Roberto SYM24C
 Maier, Larissa J. PA12-4
 Mailig, Ronnae SYM15C
 Majors, Chloe T. SYM6A
 Mann, Nathan PA17-3
 Manyanga, Jimmy PA4-5
 Mao, Jason M. PA6-2
 Mao, Jian-Hua SYM26C
 Marsden, David SYM18B
 Marshall, Anna-Marie SYM20A
 Marti, Nathan SYM18B
 Martinez, Joshua PA4-3
 Martínez, Ursula SYM11B
 Marynak, Kristy SYM2A
 Matt, Georg SYM26D
 Mayer, Margaret SYM21A
 Maziak, Wasim SYM15A
 McBride, William PA1-1
 McCarter, Kristen SYM11A
 McCarthy, Danielle E. SYM23F
 McClernon, Joe SYM21B
 McClure, Erin A. PA5-4
 McConnell, Rob SYM21A
 McCrae, Tarsha PA16-6
 McIntosh, Scott PA4-4
 McKee, Sherry SYM5E
 McKenna, Michael R. PA5-1
 McNeill, Ann SYM22C, PA3-3
 McRae, Thomas PA11-1
 Mdege, Noreen D. SYM20C
 Meacham, Meredith PA12-3
 Mead, Erin PA16-2
 Meier, Ellen SYM12D
 Mendel, Jennifer R. PA7-1
 Meng, Jun SYM16E
 Mercincavage, Melissa PA7-3
 Mermelstein, Robin SYM21C, SYM25A, SYM25E
 Messina, Catherine R. SYM2D
 Miele, Andrew SYM11D
 Miller, David B. PA12-1
 Miller Lo, Erin SYM18C
 Mitchell, Thomas PA1-4
 Mochizuki-Kobayashi, Yumiko SYM9A
 Moen, Janna K. SYM14D
 Mohammadi, Leila PA15-2, PA15-4
 Montesinos, V. Nahuel SYM9D
 Moodie, Crawford SYM22C, SYM22B
 Moore, Roland PA14-4
 Moran, Meghan SYM8B, PA17-6
 Moreno, Debra E. PA15-3
 Morojele, Neo SYM20C
 Morris, Chad PA3-4

Muhlebach, Marianne S. PA4-1
 Mull, Kristin SYM5A
 Munafò, Marcus PA3-1
 Murphy, Rebecca PA17-3
 Murphy, Sharon SYM16A, SYM16B
 Muscat, Joshua PA6-6
 Mussulman, Laura SYM20D
 Muthumalage, Thivanka SYM2C
 Muvvala, Srinivas SYM7F
 Muzikanksy, Alona SYM11E

N

Nadim, Haleh SYM13C
 Namba, Mark D. PA10-2
 Nangia, Anica PA1-2
 Narayanan, Shrinath PA10-2
 Nardone, Natalie SYM12C, SYM16D
 Niaura, Raymond SYM12E, SYM18C
 Noar, Seth M. PA7-1, PA17-4
 Nollen, Nicole PA14-2
 Nonnemaker, James PA16-6, PA17-2

O

O'Connor, Richard SYM9B, SYM9C,
 SYM12D, PA4-4, PA13-3
 O'Dea, Sean SYM15E
 O'Donnell, Matthew B. PA17-1
 Oguss, Madeline K. SYM23F
 Okuyemi, Kola PA14-2
 Oliver, Jason SYM21B
 Olson, Lindsay PA8-3, PA16-6
 O'Malley, Stephanie SYM7E, SYM7F,
 SYM13B, SYM13C
 Ong, Sang-Ging PA15-4
 Opazo Breton, Magdalena PA8-2
 Ophir, Yotam PA9-5
 Ordillas, Elvira SYM23E, SYM23D
 Orozco, Leah PA11-4
 Ortinski, Pavel SYM10A
 Ossip, Deborah PA4-4
 Ostroff, Jamie S. SYM11C, SYM11E
 Ouimet, Janine SYM9A

P

Pacek, Lauren R. SYM4A, SYM21B
 Pachas, Gladys PA6-6
 Pagano, Anna PA3-5
 Paik, David T PA10-1
 Palmatier, Matthew I. SYM6A
 Palmer, Abraham A. PA2-3
 Pang, Raina PA5-5
 Papke, Roger L. SYM19C
 Pappas, Steve SYM12A
 Parag, Varsha PA9-1
 Parascandola, Mark SYM19A
 Parate, Abhinav SYM5E



Park, ElyseSYM11E
 Park, Sungshim L.SYM16A
 Parker, Maria A.PA3-2
 Partridge, AnneSYM11E
 Partridge, EileenSYM23F
 Patel, JyotiSYM11D
 Paul, ChristosSYM2E
 Pearlman, Deborah N.PA16-6
 Pebley, KinseyPA11-2
 Pechmann, ConniePA12-2
 Pedersen, Eric R.PA13-2
 Pentel, PaulPA1-5
 Perez, GiselleSYM11E
 Pérez-Stable, Eliseo J.SYM16B
 Pericot-Valverde, IreneSYM20E
 Perkins, KennethSYM6D, SYM14C
 Perry, Cheryl L.SYM18B, SYM18A
 Perry, RobinPA1-3
 Phillips, ConnorPA12-2
 Phillips, ElysePA13-1
 Piepmeier, Mary E.SYM7F
 Pierce, John P.PA7-5
 Piper, Megan E.SYM7C, SYM7D,
 SYM23F, SYM23G, SYM25A
 Phippen, EricaPA1-2
 Pitzer, LindsaySYM18C
 Plumbo, Mary N.SYM2B
 Plunk, Andrew D.SYM25D
 Plunk, AndySYM17B
 Polosa, RiccardoSYM2E
 Popova, LucyPA7-2
 Powers, Jessica M.SYM3B
 Prochaska, Judith J.PA12-2, PA12-3
 Pugach, OksanaSYM21C

Q

Quah, AnneSYM9A
 Queen, Tara L.PA17-4
 Queimado, LurdesPA4-5

R

Rahman, IrfanSYM2C, PA4-4
 Ramakrishnan, Viswanathan R.PA5-4
 Ramirez, DanielPA4-3
 Ramo, Danielle E.SYM18E, PA12-3, PA12-4
 Rao, PamelaPA17-2
 Ray, LaraPA5-5
 Readshaw, AnneSYM20A
 Reed, JennaSYM15C
 Regan, SueSYM11E
 Reid, JessicaSYM9B
 Ren, SuelynSYM6B
 Rest, Eva C.SYM25E
 Rezvani, Amir H.PA1-2
 Ribisl, Kurt M.PA7-1
 Richie, JohnPA6-6
 Richter, Kimber P.SYM20D
 Rigotti, NancySYM11E, SYM23A
 Rimpela, ArjaSYM4E

Rivera, José O.PA15-1
 Rivera-Rivera, Jessica N.SYM11C
 Robinson, DenishaSYM9C
 Robinson, Leslie A.PA11-2
 Robinson, Risa J.SYM12B, SYM15E
 Robson, DeborahSYM2E
 Rodes, RobertPA17-3
 Rogers, Andrew H.SYM3D
 Rogers, ToddSYM2A, PA8-3, PA16-6
 Romberg, AlexaSYM18C
 Rose, JeanmarieSYM23D, SYM23E
 Rose, Jed E.PA1-2
 Ross, AshleyPA8-3, PA16-6
 Rubinstein, Mark L.SYM18E, PA11-1
 Russell, Marion L.SYM9D

S

Sadhasivam, BalajiPA4-5
 Saladin, Michael E.PA5-4
 Saldivar, EnriquePA12-1
 Salmon, EricaPA14-5
 Samuels, LarryPA3-4, PA11-1, PA14-2
 Sanchez-Roige, SandraPA2-3
 Satanove, DoranSYM6B
 Satre, Derek D.PA12-4
 Schauer, GillianPA13-1
 Schick, SuzaynnSYM26A, PA15-2, PA15-4
 Schlagintweit, HeraPA1-3
 Schlam, Tanya R.SYM23F, SYM23G
 Schnoll, RobertSYM11D
 Scholl, Sarah M.PA6-2
 Schwartz, RobertSYM4B, SYM4D, SYM13D
 Scollo, MichellePA8-1
 Sebrie, Ernesto M.PA7-4
 Seeholzer, EileenSYM23D, SYM23E
 Seelam, RachanaPA13-2
 Seemiller, LaurelPA2-2
 Selby, PeterPA13-4
 Selya, ArielleSYM25B
 Shanmugam, AkshayaSYM5E
 Shepherd, PhilipSYM24C
 Shields, Peter G.SYM12D
 Shiffman, SaulSYM7B, PA6-2
 Shih, ReginaPA13-2
 Shihadeh, AlanSYM15A
 Shoda, YuichiSYM5B
 Shrestha, PrabinSYM20B
 Siddiqi, KamranSYM20A, SYM20C
 Siegel, Leeann N.PA17-1
 Siegmund, Kimberly D.PA15-3
 Simmons, Vani N.SYM11B
 Sleiman, MohamadSYM9D
 Smethells, JohnPA1-5
 Smith, AlexandriaPA17-2
 Smith, Amanda L.SYM6A
 Smith, DanielleSYM12E, PA13-3
 Smith, Gregory T.SYM11C
 Smith, JuliaSYM24A
 Smith, Tracy T.SYM4A
 Snijders, Antoine M.SYM26C
 Soule, Eric K.SYM13D
 Souprountchouk, ValentinaPA7-3



SRNT SRNT 2019 • AUTHOR INDEX

Spillane, Torra E.	PA9-3
Spindel, Eliot	PA1-4
Spittal, Matthew	PA8-1
Springer, Matthew	PA15-2, PA15-4
Sridharan, Vasundhara	SYM5B
Stafford, Alexandra M.	SYM14C
Stanton, Cassandra	SYM12E
Stark, Stephen E.	SYM25D
Stein, Elliot A.	PA5-1
Stepanov, Irina	SYM16E, SYM16C, SYM19B, SYM19A
St.Helen, Gideon	SYM12C, SYM16B, SYM16D
Stone, Matthew D.	PA7-5
Stram, Daniel O.	SYM16A
Strasser, Andrew	PA7-3
Strayer, Lori	SYM21D
Strong, David R.	PA7-5
Studts, Jamie L.	SYM11C
Sundar, Isaac K.	PA4-4
Sutton, Steven K.	SYM11B

T

Taleb, Ziyad B.	SYM15A
Tan, Andy S.	SYM8A
Tang, Xiaochen	SYM9D
Tarran, Robert	PA4-1
Taylor, Brent	PA3-6
Teferra, Andreas A.	SYM15B
Temel, Jennifer	SYM11E
Thanavala, Yasmin	SYM9E
Thompson, Brady M.	SYM6C
Thompson, Jesse	PA17-3
Thornley, Louise	SYM4D
Thorpe, Lorna	SYM17A
Thrasher, James	SYM8E, SYM15A, SYM22C, SYM22A, SYM22B
Tian, Lei	PA10-1, PA15-4
Tidey, Jennifer	PA6-4
Timberlake, David	SYM4E
Tipp, Angela	PA5-2
Tomko, Rachel L.	PA5-4
Tommasi, Stella	PA15-3
Tosun, Nicole	PA5-2
Touchette, Jillienne C.	SYM14D
Tran, Hy	PA17-1
Trapl, Erika	PA14-1, PA16-4
Travers, Mark	SYM12E, PA13-3
Trivers, Katrina	PA13-1
Tucker, Joan	PA13-2
Tumbo, John	SYM20C
Turner, Jill R.	SYM10A, PA10-3
Turner, Kayla M.	PA11-2
23andMe Research Team	PA2-3

U

Uffman, Emilie	SYM15C
----------------------	--------

V

Valentin-Blasini, Liza	SYM12A
Vallone, Donna	SYM18C, PA16-3
van Bommel, Dana	SYM12E
Vanderbush, Taylor S.	SYM2B
Vandrey, Ryan	PA6-4
Veatch, Nichole	PA7-4
Veldheer, Susan	PA6-6, PA9-2
Verbiest, Marjolein	PA9-1
Vidrine, Damon J.	SYM5C
Villanti, Andrea C.	PA3-2
Villaseñor, Adriana	PA7-5
Voci, Sabrina	PA13-4
Vock, David M.	PA6-1
Vogel, Erin A.	SYM18E, PA12-3
Volinsky, Allyson	PA17-1

W

Wagener, Theodore	SYM16E
Wahlquist, Amy	SYM23B, SYM23C
Wakefield, Melanie	PA8-1
Walker, Natalie	PA9-1
Wang, Lanqing	SYM12E
Wasserman, Emily	PA6-6
Watson, Clifford	SYM12A
Watson, Noreen	SYM5A
Webb Hooper, Monica	PA12-1, PA14-5
Wei, Binnian	PA13-3
Weiger, Caitlin V.	PA17-6
Weinberger, Andrea H.	SYM7A, PA13-5, PA16-1
Weisbrot, Jessica	SYM11D
Wells, Ashleigh K.	PA10-4
Wells, Corinne	PA1-2
West, Robert	PA3-3, PA8-4
White, Cassidy	SYM4A
Whitlatch, Adam	PA15-2
Widome, Rachel	PA3-6
Wiechert, Sera-Maren	SYM13C
Wileyto, E. Paul	SYM10D, SYM11D, PA5-3
Wilkinson, Anna	SYM18A, SYM18B, PA8-1
Will, Kelli E.	SYM25D
Williams, Sharon	PA17-1
Wootton, Robyn E.	PA3-1
Wratten, Christopher	SYM11A
Wright, Jennifer M.	SYM6B
Wu, Joseph	PA2-4, PA10-1, PA15-4
Wu, Rachel J.	PA8-5
Wu, Ran	SYM7E, SYM7F

X

Xiao, Haijun	PA16-3
--------------------	--------



Y

Yan, Mi	SYM9A
Yang, Bo	PA7-2
Yang, Huizhong	SYM22B
Yang, Qinghua	PA9-5, PA17-1
Yang, Sijia	PA9-5
Yao, Leah	PA1-2
Yen, Miao-Shan	PA9-2
Yingst, Jessica	PA9-2
Yoshimi, Itsuro	SYM9A
Young, Jared	SYM10B
Younis, Rabha	SYM14B
Yuille, Marie B.	PA10-4

Z

Zale, Emily L.	SYM3C
Zawertailo, Laurie	PA13-4
Zeid, Dana	PA2-2
Zhang, Bo	SYM13D
Zhang, Dongyu	PA7-1
Zhang, Joe	PA2-4, PA10-1
Zhang, Lei	PA17-3
Zhao, Xiaoquan	PA17-2
Zhou, Yang	PA15-4
Zhu, Junjia	PA6-6
Zimmerman, Julie B.	PA4-2
Zvolensky, Michael J.	SYM3D
Zweben, Allen	SYM7F, SYM7E