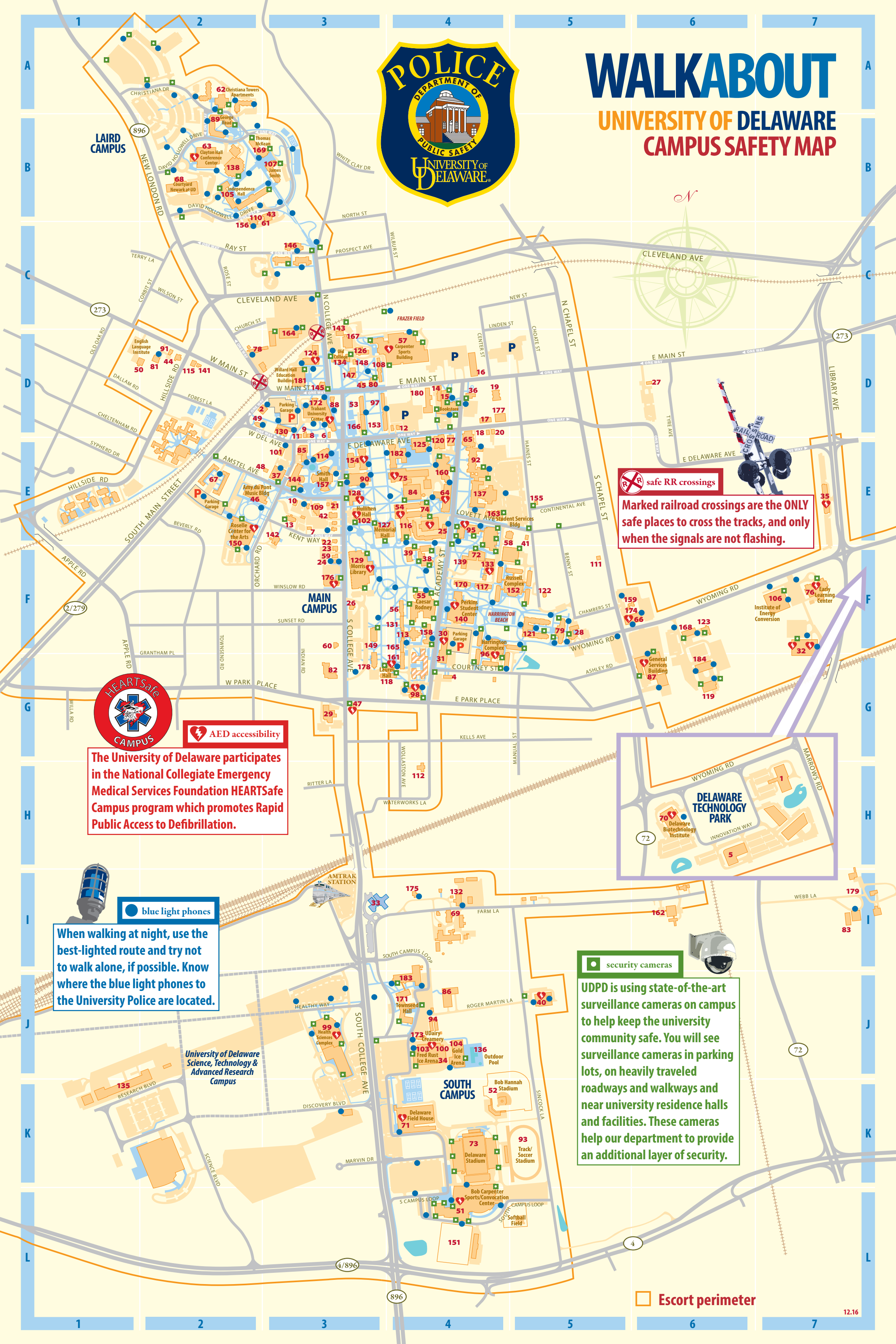




# WALKABOUT

## UNIVERSITY OF DELAWARE CAMPUS SAFETY MAP



safe RR crossings  
Marked railroad crossings are the ONLY safe places to cross the tracks, and only when the signals are not flashing.



AED accessibility

The University of Delaware participates in the National Collegiate Emergency Medical Services Foundation HEARTSafe Campus program which promotes Rapid Public Access to Defibrillation.

blue light phones

When walking at night, use the best-lighted route and try not to walk alone, if possible. Know where the blue light phones to the University Police are located.

security cameras

UDPD is using state-of-the-art surveillance cameras on campus to help keep the university community safe. You will see surveillance cameras in parking lots, on heavily traveled roadways and walkways and near university residence halls and facilities. These cameras help our department to provide an additional layer of security.

Escort perimeter



**BUILDING KEY**

- 1 1 Innovation Way H7
- 2 1 South Main Street D2
- 3 4 Kent Way E3
- 4 5 Courtney Street G4
- 5 9 Innovation Way H6
- 6 12 West Delaware Avenue D3
- 7 24 Kent Way E3
- 8 28 West Delaware Avenue D3
- 9 30 West Delaware Avenue D3
- 10 31 Amstel Avenue E3
- 11 34 West Delaware Avenue D3
- 12 42 East Delaware Avenue D4
- 13 44 Kent Way E3
- 14 77 East Main Street D4
- 15 83 East Main Street D4
- 16 108 East Main Street D4
- 17 120-122 East Delaware Ave. D4
- 18 121 East Delaware Avenue D4
- 19 124 East Main Street D4
- 20 125 East Delaware Avenue D4
- 21 148-150 South College Ave. E3
- 22 180 South College Avenue E3
- 23 186 South College Avenue F3
- 24 196 South College Avenue F3
- 25 200 Academy Street E4
- 26 231 South College Avenue F3
- 27 258 East Main Street D6
- 28 314 Wyoming Road F5
- 29 318 South College Avenue G3
- 30 401 Academy Street F4
- 31 413 Academy Street G4
- 32 459-461 Wyoming Road F7
- 33 501 South College Avenue I3
- 34 547 South College Avenue J3
- 35 850 Library Avenue E7
- 36 Academy Building D4
- 37 Alfred Lerner Hall E3
- 38 Alison Hall F4
- 39 Alison Hall West F4
- 40 Allen Biotechnology Lab J5
- 41 Alpha Gamma Rho E5
- 42 Alpha Phi E3
- 43 Alpha Sigma Alpha B3
- 44 Alpha Xi Delta D2
- 45 Alumni Hall D3
- 46 Amy du Pont Music Building E2
- 47 Amy Rextrew House G3
- 48 Baptist Student Ministry E3
- 49 Bayard Sharp Hall D2
- 50 Belmont Hall D1
- 51 Bob Carpenter Sports/Convocation Ctr. L4
- 52 Bob Hannah Stadium K4
- 53 Brown Hall D3
- 54 Brown Lab E4
- 55 Caesar Rodney Complex F4
- 56 Cannon Hall F4
- 57 Carpenter Sports Building D4
- 58 Catholic Campus Ministry E4
- 59 Center for Black Culture F3
- 60 Chabad House F3
- 61 Chi Omega B3
- 62 Christiana Towers Apts. A2
- 63 Clayton Hall B2
- 64 Colburn Lab E4
- 65 Composites Manufacturing Science Lab E4
- 66 Computing Center F6
- 67 Conover Apartments E2
- 68 Courtyard Newark at UD B2
- 69 Dairy Unit I4
- 70 Delaware Biotechnology Institute H6
- 71 Delaware Field House K4
- 72 Delaware Geological Survey F4
- 73 Delaware Stadium K4
- 74 Drake Hall E4
- 75 Du Pont Hall E4
- 76 Early Learning Center F7
- 77 East Hall E4
- 78 Ed Fine Building D2
- 79 Eliphalet Gilbert Hall F5
- 80 Elliott Hall D3
- 81 English Language Institute D2
- 82 Episcopal Campus Ministry G3
- 83 Equine Teaching Facility I7
- 84 Evans Hall E4
- 85 Ewing Hall E3
- 86 Fischer Greenhouse Lab J4
- 87 General Services Building G6
- 88 George Evans House D3
- 89 George Read Hall B2
- 90 Gore Hall E3
- 91 Graduate House D2
- 92 Graham Hall E4
- 93 Stuart and Suzanne Grant Stadium K5
- 94 Greenhouse J4
- 95 Harker Interdisciplinary Science & Engineering Laboratory E4
- 96 Harrington Complex F4
- 97 Harter Hall D3
- 98 Hartshorn Hall G4
- 99 Health Sciences Complex J3
- 100 High Performance Figure Skating Center J4
- 101 Hillel Student Center E3
- 102 Hüllihen Hall E3
- 103 Ice Arena Fred Rust J4
- 104 Ice Arena Gold J4
- 105 Independence Hall B2
- 106 Institute of Energy Conversion F7
- 107 James Smith Hall B3
- 108 Jastak-Burgess Hall D3
- 109 Kappa Alpha E3
- 110 Kappa Alpha Theta B2
- 111 Kappa Delta Rho F5
- 112 Kappa Sigma H4
- 113 Kent Hall F4
- 114 Kirkbride Hall E3
- 115 Lambda Chi Alpha D2
- 116 Lammot du Pont Laboratory E4
- 117 Lane Hall F4
- 118 Laurel Hall G4
- 119 Library Annex Building G6
- 120 Life Sciences Research Facility E4
- 121 Louis Redding Hall F5
- 122 Lutheran Student Assoc. F5
- 123 Materials Mgmt. Facility F6
- 124 McDowell Hall D3
- 125 McKinly Lab E4
- 126 Mechanical Hall D3
- 127 Memorial Hall E3
- 128 Mitchell Hall E3
- 129 Morris Library F3
- 130 Munroe Hall D3
- 131 New Castle Hall F4
- 132 Newton Poultry Building I4
- 133 Ocean Engineering Lab F4
- 134 Old College D3
- 135 Operations Support Center K1
- 136 Outdoor Pool J4
- 137 Pearson Hall E4
- 138 Pencader Dining Hall B2
- 139 Penny Hall F4
- 140 Perkins Student Center F4
- 141 Presbyterian Campus Ministry D2
- 142 President's House E3
- 143 Print Studio D3
- 144 Purnell Hall E3
- 145 Raub Hall D3
- 146 Ray Street Complex C3
- 147 Recitation Hall D3
- 148 Recitation Hall Annex D3
- 149 Robinson Hall F3
- 150 Roselle Center for the Arts E2
- 151 Fred P. Rullo Stadium L4
- 152 Russell Complex F5
- 153 Sharp Hall D3
- 154 Sharp Lab E3
- 155 Sigma Kappa E5
- 156 Sigma Phi Epsilon C2
- 157 Smith Hall E3
- 158 Smyth Hall F4
- 159 Solar House F5
- 160 Spencer Lab E4
- 161 Squire Hall G4
- 162 Stearns Lab I6
- 163 Student Services Building E4
- 164 Studio Arts Building D3
- 165 Sussex Hall F4
- 166 Sypherd Hall D3
- 167 Taylor Hall D3
- 168 Theatre Scene Shop F6
- 169 Thomas McKean Hall B2
- 170 Thompson Hall F4
- 171 Townsend Hall J4
- 172 Trabant University Center D3
- 173 UDaury Creamery J4
- 174 UD ECU Garage F5
- 175 University Farmhouse I4
- 176 University Visitors Center F3
- 177 Venture Development Ctr. D4
- 178 Warner Hall G3
- 179 Webb Farm I7
- 180 Wesley Foundation Campus Ministry D4
- 181 Willard Hall Education Bldg. D3
- 182 Wolf Hall E4
- 183 Worriow Hall J4
- 184 Wyoming Road Complex G6

**POLICE•MEDICAL•FIRE EMERGENCIES ONLY:**

**9-1-1**

**NONEMERGENCIES:**

**831-2222**

**THIS WALKABOUT MAP IS PROVIDED AS A SERVICE TO THE UNIVERSITY COMMUNITY BY THE UD POLICE DEPARTMENT**

**POLICE**  
UNIVERSITY OF DELAWARE



**University of Delaware Police**  
413 Academy Street  
Newark, DE 19716  
[www.udel.edu/police](http://www.udel.edu/police)

@UDelPolice

The University of Delaware does not discriminate on the basis of race, color, national origin, sex, disability, religion, age, veteran status, gender identity or expression, or sexual orientation, or any other characteristic protected by applicable law in its employment, educational programs and activities, admissions policies, and scholarship and loan programs as required by Title IX of the Educational Amendments of 1972, the Americans with Disabilities Act of 1990, Section 504 of the Rehabilitation Act of 1973, Title VII of the Civil Rights Act of 1964, and other applicable statutes and University policies. The University of Delaware also prohibits unlawful harassment including sexual harassment and sexual violence. For inquiries or complaints related to Title IX, please contact: Susan L. Groff, Ed. D., Director, Institutional Equity & Title IX Coordinator, 305 Hüllihen Hall, Newark, DE 19716, 302-831-8063, [tidexcoordinator@udel.edu](mailto:tidexcoordinator@udel.edu). For complaints related to Section 504 of the Rehabilitation Act of 1973 and/or the Americans with Disabilities Act, please contact: Anne L. Jannarone, M.Ed., Ed.S., Director, Office of Disability Support Services, Alison Hall, Suite 130, Newark, DE 19716, 302-831-4643 OR contact the U.S. Department of Education - Office for Civil Rights. For complaints related to Title VII and age discrimination, please contact: Patty Fogg, Director, Employee Relations Department of Human Resources, 413 Academy Street, Newark, DE 19716, 302-831-2171. 10M/12.16/W

**WALKABOUT**  
UNIVERSITY OF DELAWARE CAMPUS SAFETY MAP  
CAMPUS WALKING PATHS BLUE LIGHT PHONES ESCORT PERIMETER  
UD POLICE DEPARTMENT 413 ACADEMY STREET NEWARK, DE 19716

**A SAFE UD STARTS WITH ME.**

Together we keep UD SAFE.

Learn more at [www.udel.edu/SAFEUD](http://www.udel.edu/SAFEUD)  
Download the app now.

decisions about their own safety and take necessary precautions. For up-to-date reports, visit UDaily at [www.udel.edu/udaily](http://www.udel.edu/udaily). A special service sends an email whenever news about crime is posted on UDaily. To subscribe, go to: [www.udel.edu/udaily/subscribe.html](http://www.udel.edu/udaily/subscribe.html).

5. In keeping with this philosophy, and in keeping with the Jeanne Clery Disclosure of Campus Security Policy and Crime Statistics Act, information about campus security programs, recommended personal safety practices, the authority of the University Police, campus disciplinary procedures and campus crime statistics for the most recent three-year period are available online at [www.udel.edu/Police](http://www.udel.edu/Police) or may be requested from the University of Delaware Police Department Administrative Services Unit, Newark, DE 19716-4210.

6. If you are a crime victim, report the crime to the police as soon as possible. Detailed descriptions of the suspects are invaluable to the investigators, as are details such as license plate numbers or types of vehicles.

1. Be aware of campus and local crime trends. News of incidents in the areas around the University are reported on UDaily ([www.udel.edu/udaily](http://www.udel.edu/udaily)), and statistics are available at the UD Police website: [www.udel.edu/Police](http://www.udel.edu/Police).

2. Report all suspicious activity by calling 911 from on or off campus. Timely reports of information make it easier for police to gather critical evidence and also increase the odds of recovering stolen property and successfully prosecuting a criminal.

3. Identify all valuables. Register bicycles with Parking Services and all other valuable property with UD Police.

4. Keep informed. The University's philosophy is to fully publicize campus-related crime to ensure that the University community is made aware of public health and safety issues. This will allow the surrounding community to make

**CRIME PREVENTION**

A word of advice for students—and anyone else—considering walking on or next to the railroad tracks: "Don't!" Members of the University community are reminded to cross the tracks at designated crossing sites and to observe the signal warnings at these crossings. Walking on the railroad tracks is not only unsafe, it's also illegal. According to the City of Newark ordinance, individuals who go on the railroad tracks—other than at marked and identified public crossings—are guilty of trespassing. Fines for first-time violations can range from \$100 to \$500.

**CAUTION Tracks are for trains.**

**RAILROAD SAFETY**

7. Attend security awareness programs held on campus to gain valuable information.

8. Use crosswalks and pedestrian crossing signals to cross streets.

9. Especially for women, UDDP offers the RAD (Rape Aggression Defense) program, a 15-hour course taught by trained members of the Police Department.

1. Always be aware of your surroundings and use good judgment. Show a confident attitude and be alert. Follow common-sense precautions at all times.

2. Remember that University Police, assisted by Cadets, regularly patrol the campus in vehicles, on bicycles and on foot during late-night hours. They are available for assistance when needed.

3. Avoid walking alone at night. Walk with a group or ride a University shuttle bus. Take note of the locations of the more than 200 blue light phones around the campus that connect you directly to UD Police. UDDP's escort program is also available during hours of darkness to students, faculty, and staff, when you need to walk alone after dark. This program covers any University property or contiguous street and specific areas off campus that immediately border the Late Bird bus route. Cadets utilize the University's bus service as the primary mode of transportation. Information regarding the University's late night bus service, Late Bird, can be found at: [http://www1.udel.edu/transportation/ud\\_route/PDFs/Fall12016/latebird.pdf](http://www1.udel.edu/transportation/ud_route/PDFs/Fall12016/latebird.pdf).

4. Keep doors locked (rooms and vehicles). Do not prop open residence hall doors. This is an invitation for trespassers.

5. Do not lend keys, ID or building access cards to anyone—even friends. Lending an access card is a violation of residence hall regulations and could result in eviction from the residence halls.

6. Immediately report all maintenance problems, such as broken locks and windows.

**PERSONAL SECURITY**

The University is committed to providing a safe and healthful environment. The Police, Environmental Health and Safety, and Facilities Departments have developed the following information to help you address your safety and security needs. Additional information can be found at [www.udel.edu/emergency](http://www.udel.edu/emergency).

**CAMPUS SAFETY AND SECURITY**