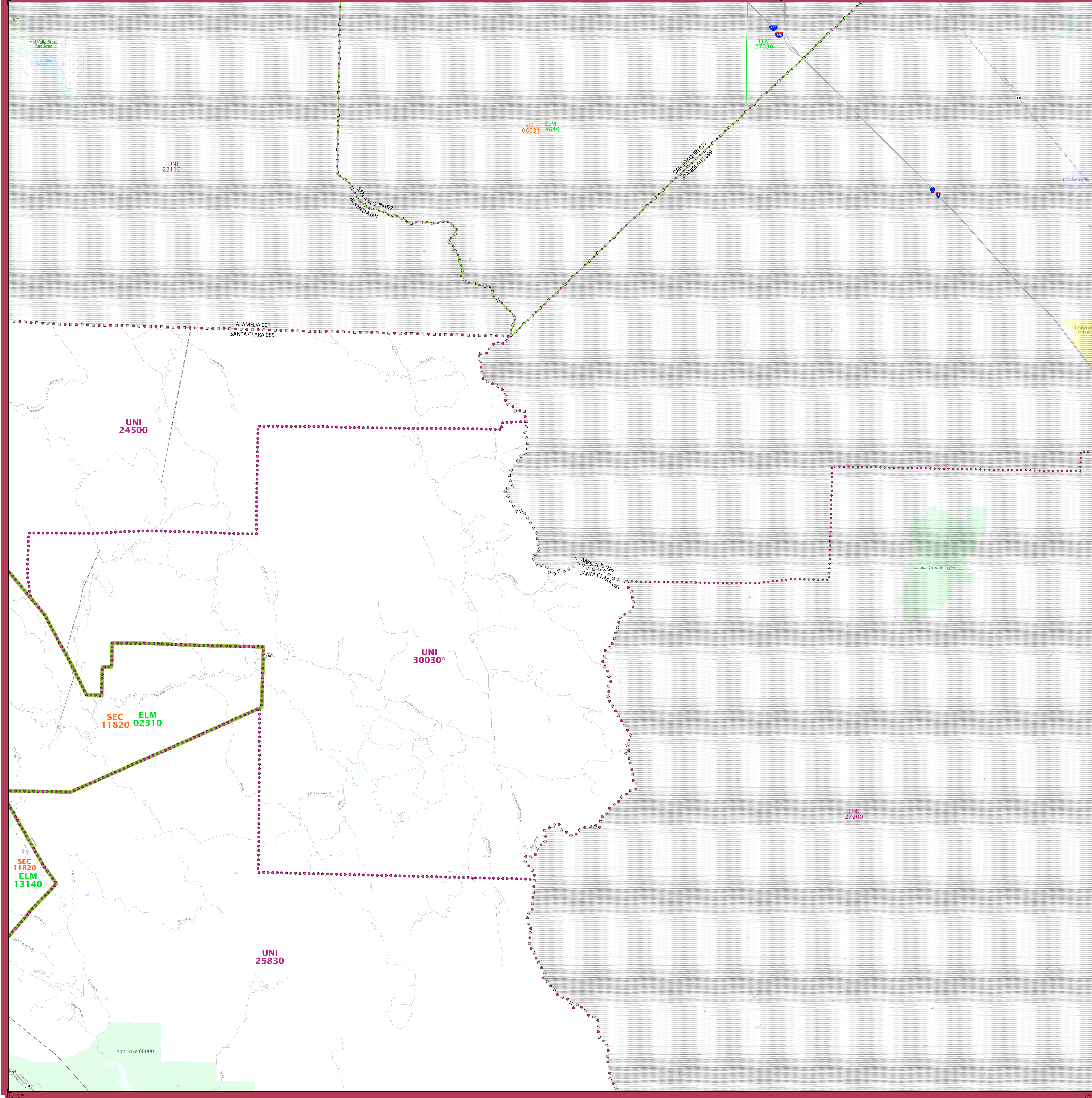


2020 CENSUS - SCHOOL DISTRICT REFERENCE MAP: Santa Clara County, CA



LEGEND

SYMBOL DESCRIPTION	SYMBOL	LABEL STYLE
International	☆☆☆☆☆	CANADA
Federal American Indian Reservation	L'ANSE RES 1880
Off-Reservation Trust Land	T1880
State American Indian Reservation	Tama Res 9400
Alaska Native Regional Corporation	+++++	NANA ANRC 52120
State (or statistically equivalent entity)		NEW YORK 36
County (or statistically equivalent entity)	□□□□	ERIE 029
Minor Civil Division (MCD) ^{1,2}	○○○○○	Bristol town 07485
Consolidated City	○○○○○	MILFORD 47500
Incorporated Place ^{3,4}	■ ■ ■ ■ ■	Davis 18100
Census Designated Place (CDP) ³	■ ■ ■ ■ ■	Incline Village 35100
Unified School District ⁴	UNI 03370 SEC 99965 ELM 02220
Secondary School District ⁴	
Elementary School District ⁴	

DESCRIPTION	SYMBOL	DESCRIPTION	SYMBOL
Interstate	—[2]—	Water Body
U.S. Highway	—[2]—	Military
State Highway or State Road	—[2]—	National or State Park, Forest, or Recreation Area
Other Road	Yosemite NP
4WD Trail, Stairway, Alley, Walkway, or Ferry	Inset Area
Railroad	Outside Subject Area
Pipeline or Power Line		
Ridge or Fence		
Nonvisible Boundary or Feature Not Elsewhere Classified		

Where international, state, county, and/or MCD boundaries coincide, the map shows the boundary symbol for only the highest-ranking of these boundaries.

Geographic area names are followed by either their FIPS or census code.

1 MCD boundaries are shown in the following states in which some or all MCDs function as general-purpose governmental units: Connecticut, Illinois, Indiana, Kansas, Maine, Massachusetts, Michigan, Minnesota, Missouri, Nebraska, New Hampshire, New Jersey, New York, North Dakota, Ohio, Pennsylvania, Rhode Island, South Dakota, Vermont, and Wisconsin. (Note that Illinois and Nebraska have some counties covered by nongovernmental precincts and Missouri has most counties covered by nongovernmental townships.)

2 A " " following an MCD name denotes a false MCD. A " " following a place name indicates that a false MCD exists with the same name and FIPS code as the place; the false MCD label is not shown.

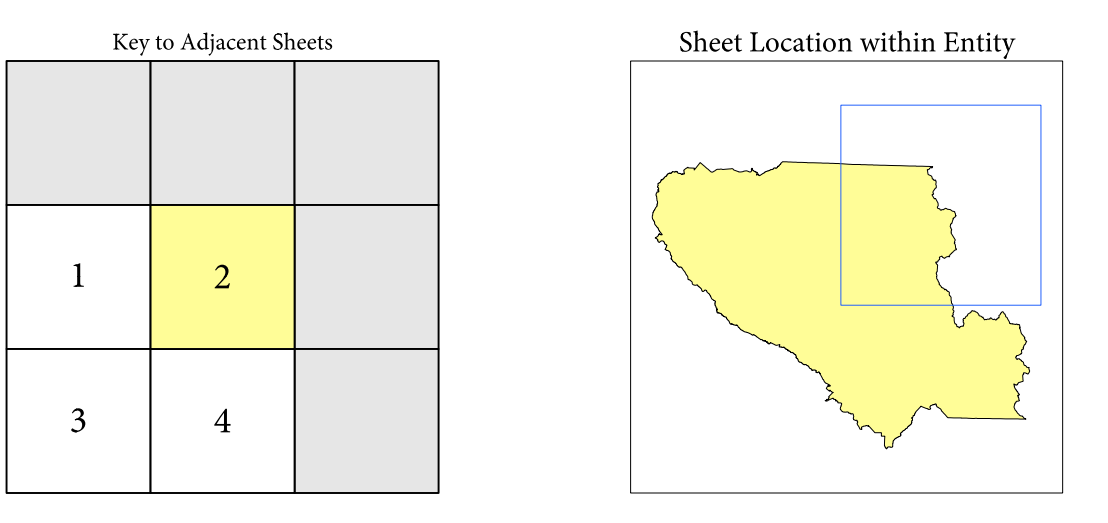
3 Place label color corresponds to the place fill color.

4 A " " following a label indicates that the school district is in more than one county.

Due to space limitations, some areas and features such as water bodies, parks, and roads may not be labeled.

SUBJECT AREA SCHOOL DISTRICTS ON MAP SHEET

TYPE	CODE	NAME
ELM	02210	Alum Rock Union Elementary School District
ELM	13140	Evergreen Elementary School District
SEC	11820	East Side Union High School District
UNI	24500	Milpitas Unified School District
UNI	25830	Mojarra Hill Unified School District
UNI	30030	Patterson Joint Unified School District



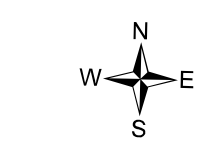
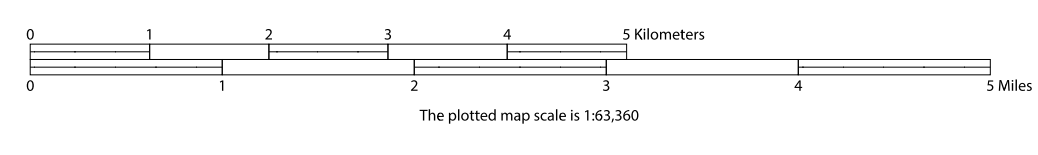
Sheet 2 of 4 PARENT sheets
Total Sheets: 5 (Index 1; Parent 4; Inset 0)

All legal boundaries and names are as of January 1, 2020. The boundaries shown on this map are for Census Bureau statistical data collection and tabulation purposes only; their depiction and designation for statistical purposes does not constitute a determination of jurisdictional authority or rights of ownership or entitlement.

Geographic Vintage: 2020 Census (reference date: January 1, 2020)
Data Source: U.S. Census Bureau's MAI/TIGER database (TAB20)
Map Created by Geography Division: January 06, 2021

U.S. DEPARTMENT OF COMMERCE U.S. Census Bureau

Projection: Albers Equal Area Conic
Datum: NAD 83
Spheroid: GRS 80
1st Standard Parallel: 34 06 27
2nd Standard Parallel: 40 25 20
Central Meridian: -119 18 20
Latitude of Projection's Origin: 32 31 43
False Easting: 0
False Northing: 0



NAME: Santa Clara County (085)
ENTITY TYPE: County or statistically equivalent entity
ST: California (06)

